

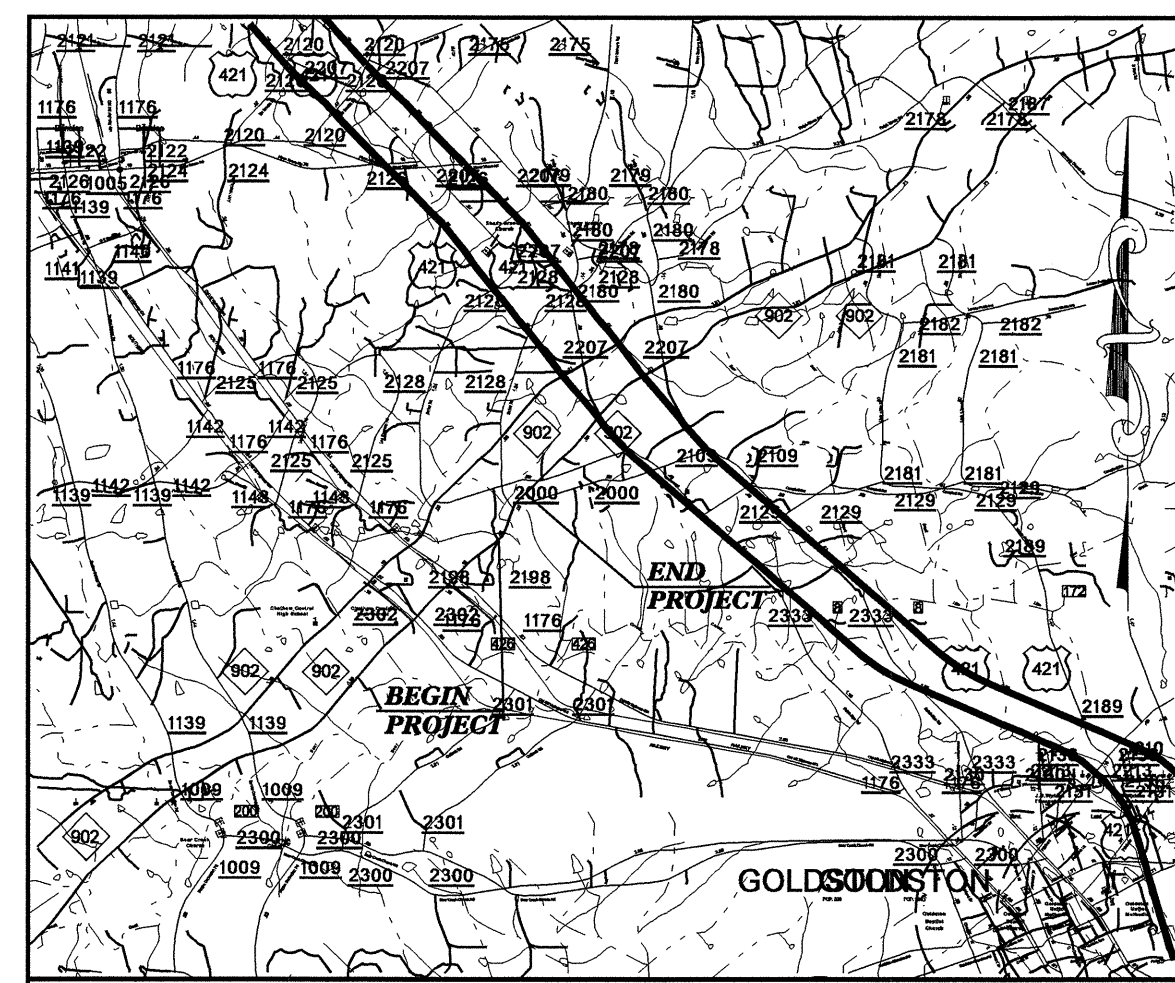
TIP PROJECT: B-4063

T.I.P. NO.	SHEET NO.
B-4063	UC-1

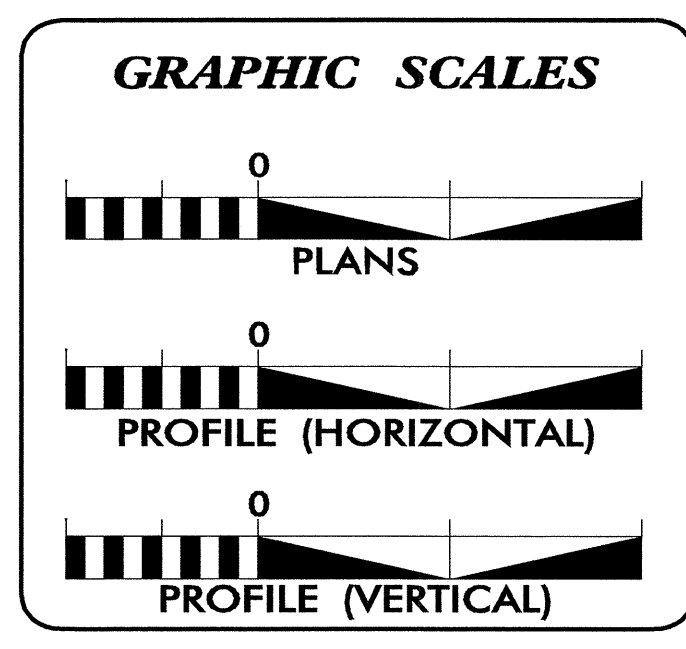
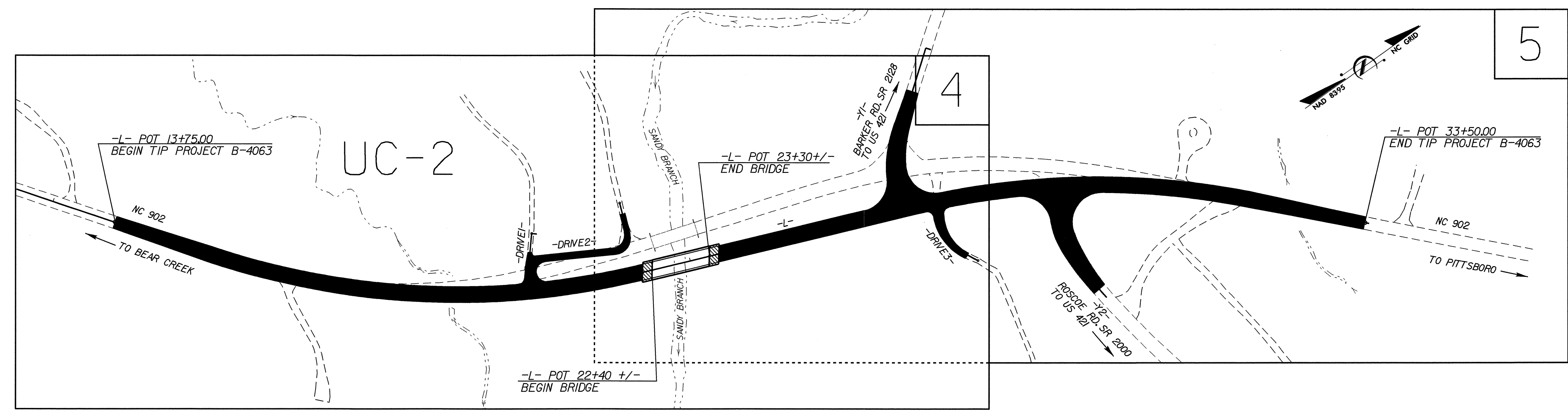
STATE OF NORTH CAROLINA
DIVISION OF HIGHWAYS

**UTILITY CONSTRUCTION PLANS
CHATHAM COUNTY**

LOCATION: BRIDGE NO. 20 OVER SANDY BRANCH AND APPROACHES ON NC 902
TYPE OF WORK: WATER SERVICE RELOCATION



VICINITY MAP
(NOT TO SCALE)

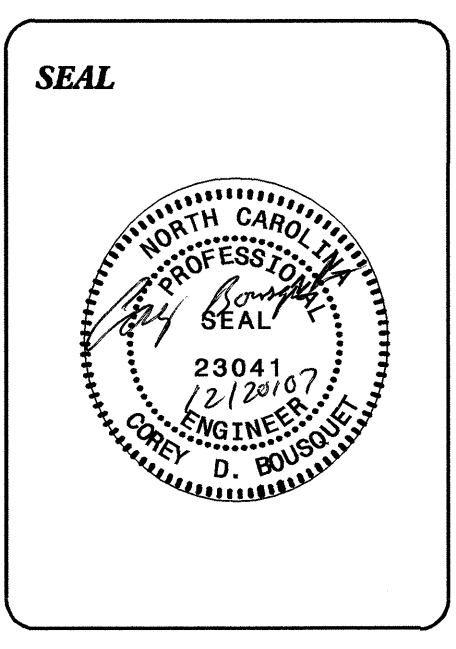


INDEX OF SHEETS

SHEET NO.	DESCRIPTION
UC-1	TITLE SHEET
UC-2	UTILITY CONSTRUCTION PLAN SHEETS

WATER AND SEWER OWNERS ON PROJECT

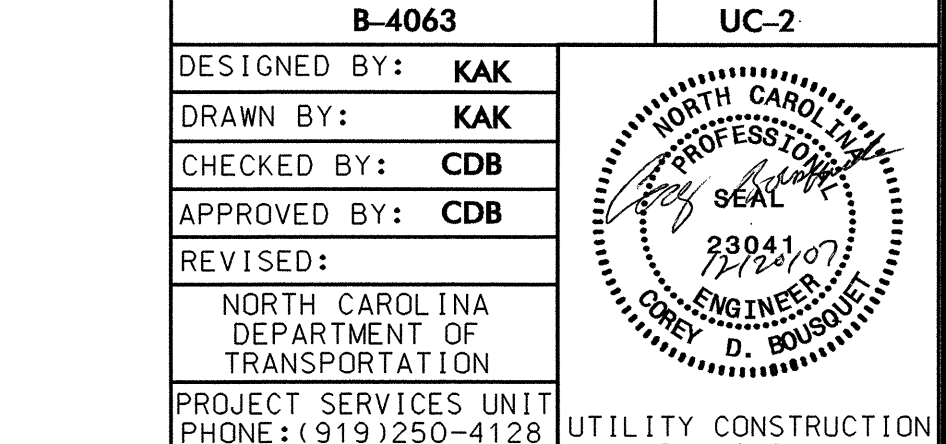
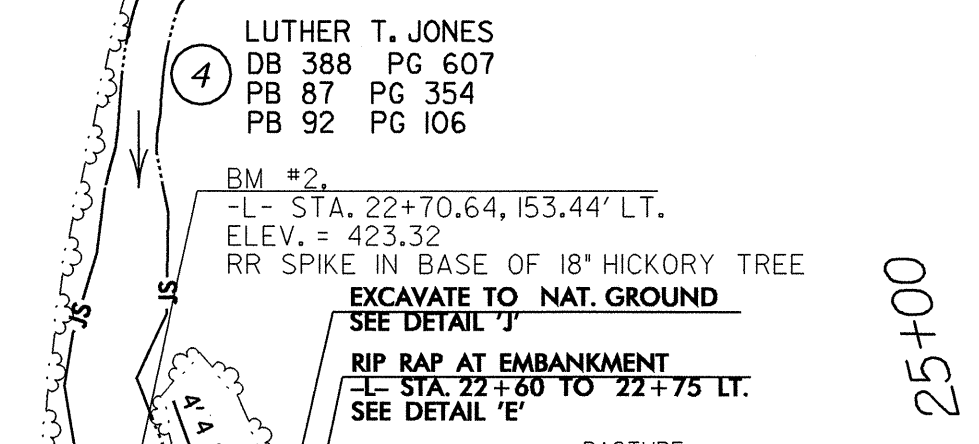
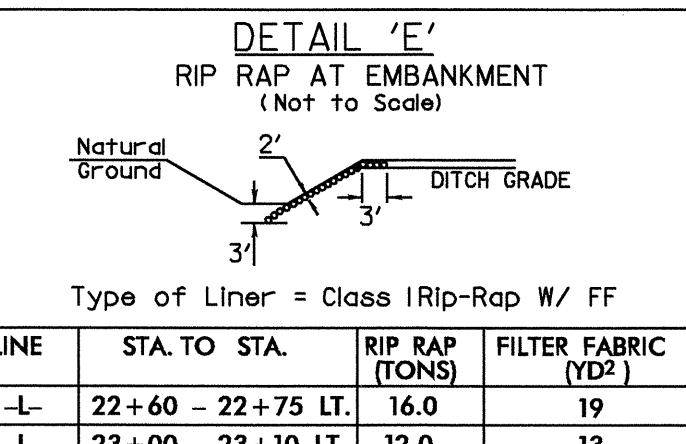
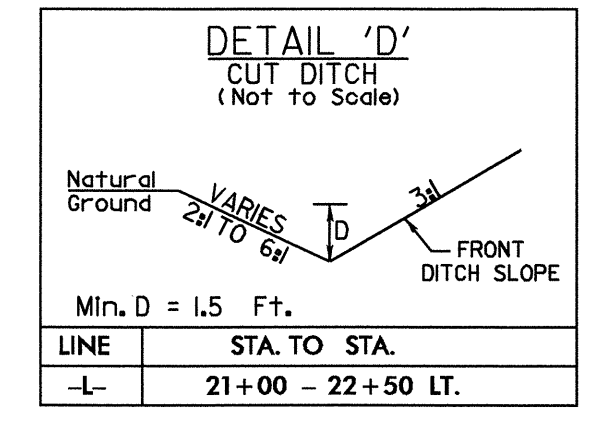
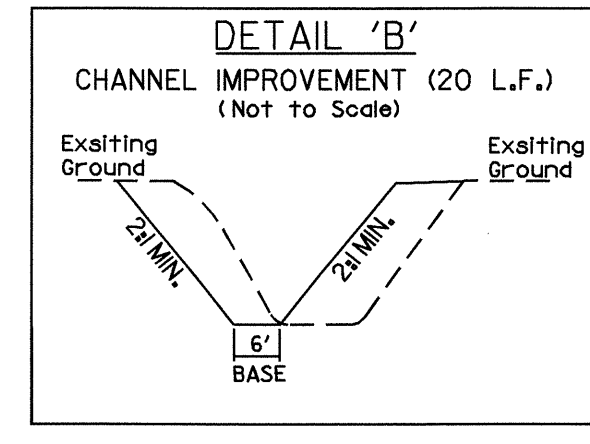
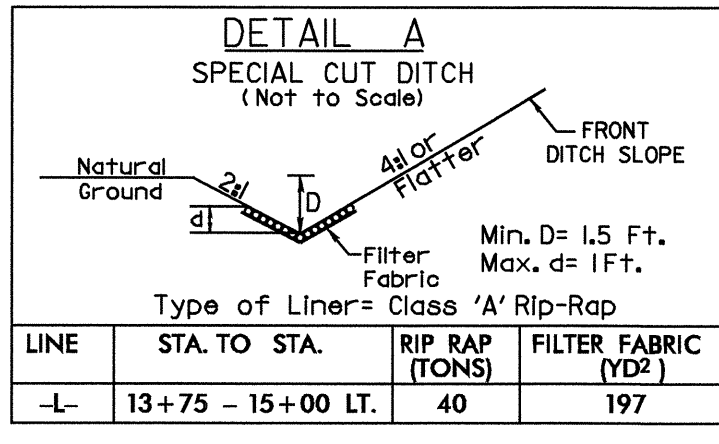
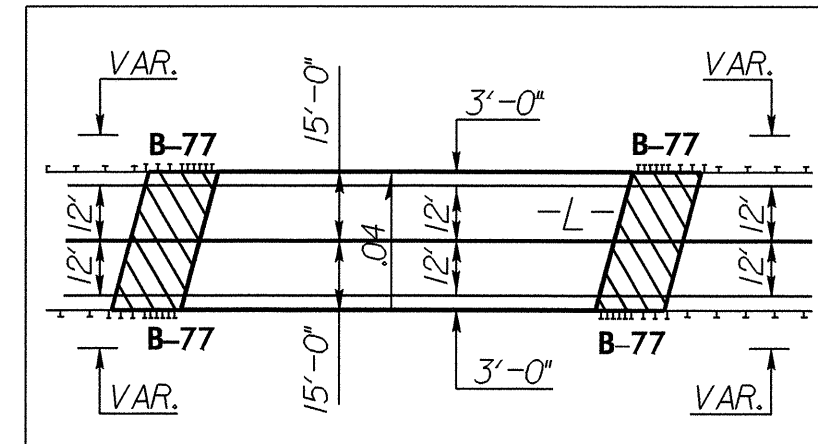
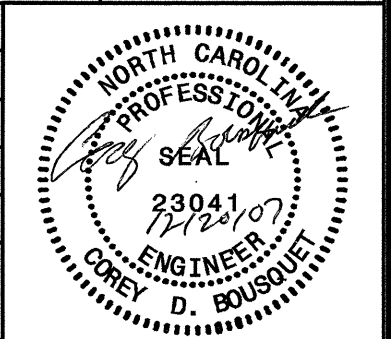
(1) WATER : Chatham County Water District



PREPARED IN THE OFFICE OF:
**DIVISION OF HIGHWAYS
PROJECT SERVICES
UTILITY SECTION**

1591 MAIL SERVICES CENTER
RALEIGH, NC 27699-1591
PHONE (919) 250-4128
FAX (919) 250-4119

Roger Worthington, P.E. UTILITIES SECTION ENGINEER
Corey Bousquet, P.E. UTILITIES SQUAD LEADER PROJECT ENGINEER
Kifah Kamil UTILITIES PROJECT DESIGNER



SKETCH SHOWING PROPOSED BRIDGE WIDTH IN RELATION TO PROPOSED PAVEMENT WIDTH

PROP. 874' OF 2" WATER SERVICE LINE

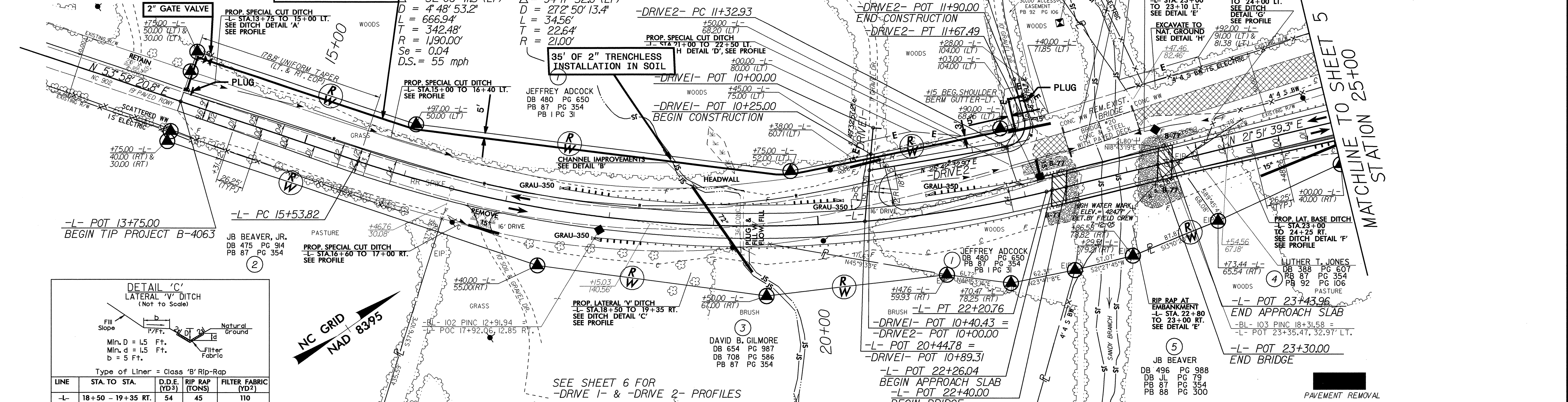
35' OF 2" TRENCHLESS INSTALLATION IN SOIL

DRIVE 1 - POT 10+00.00 BEGIN CONSTRUCTION

DRIVE 2 - POT 12+07.07 END CONSTRUCTION

DRIVE 2 - POT 11+90.00 END CONSTRUCTION

UTILITY CONSTRUCTION MATCHLINE TO SHEET 5

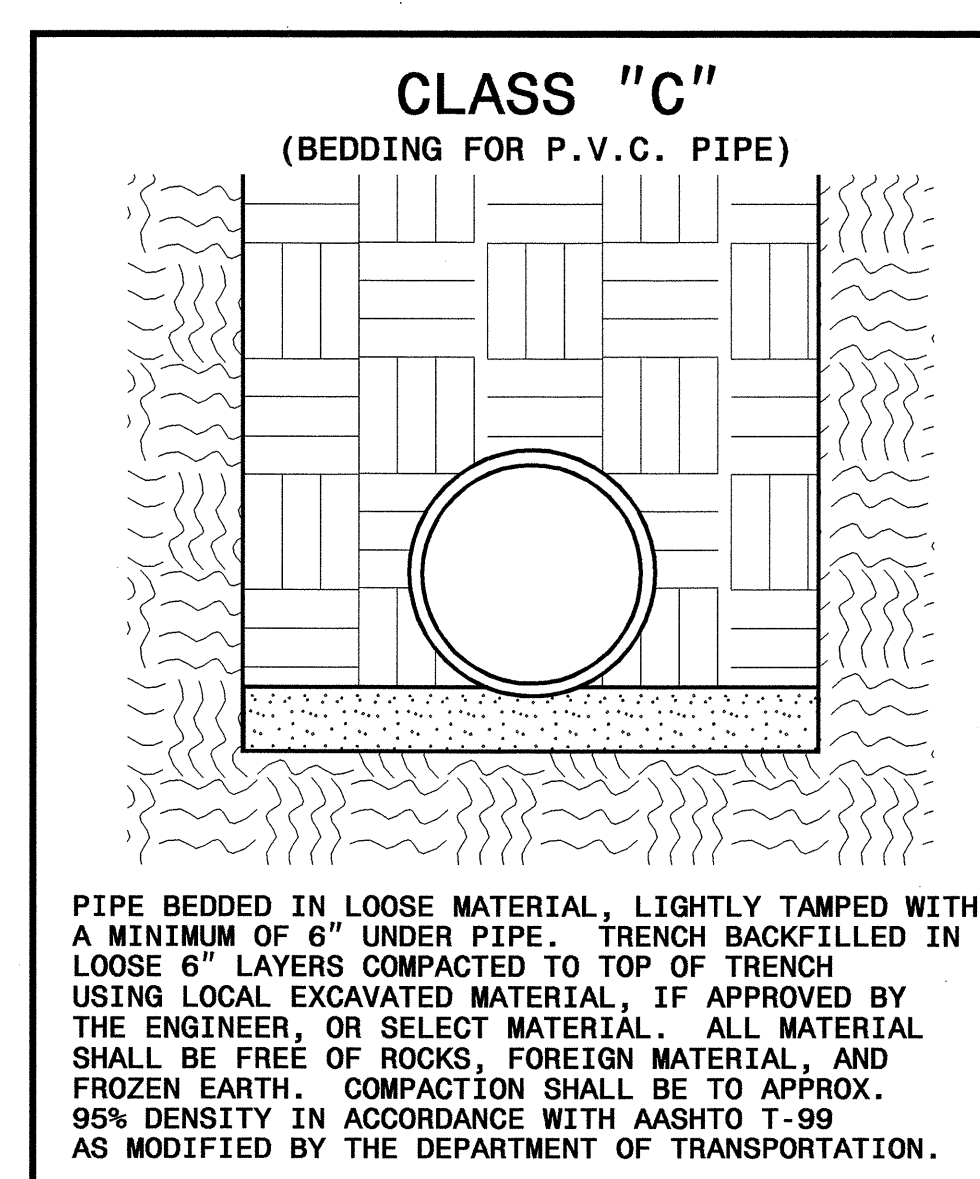
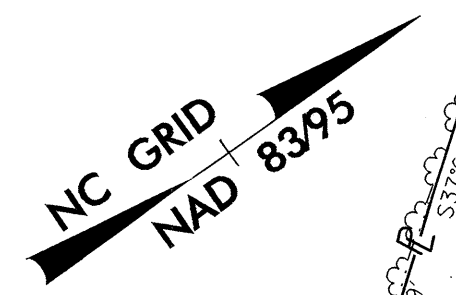


DETAIL 'C' LATERAL 'V' DITCH (Not to Scale)

Min. D = 1.5 Ft.
 Min. d = 1.5 Ft.
 b = 5 Ft.

Type of Liner = Class 'B' Rip-Rap

LINE	STA. TO STA.	D.D.E. (YD3)	RIP RAP (TONS)	FILTER FABRIC (YD2)
-L-	18+50 - 19+35 RT.	54	45	110



PIPE BEDDED IN LOOSE MATERIAL, LIGHTLY TAMPED WITH A MINIMUM OF 6" UNDER PIPE. TRENCH BACKFILLED IN LOOSE 6" LAYERS COMPACTED TO TOP OF TRENCH USING LOCAL EXCAVATED MATERIAL, IF APPROVED BY THE ENGINEER, OR SELECT MATERIAL. ALL MATERIAL SHALL BE FREE OF ROCKS, FOREIGN MATERIAL, AND FROZEN EARTH. COMPACTION SHALL BE TO APPROX. 95% DENSITY IN ACCORDANCE WITH AASHTO T-99 AS MODIFIED BY THE DEPARTMENT OF TRANSPORTATION.

DETAIL 'F' LATERAL BASE DITCH (Not to Scale)

Min. D = 1.5 Ft.
 Min. d = 1.5 Ft.
 b = 5 Ft.

Type of Liner = Class B Rip-Rap

LINE	STA. TO STA.	D.D.E. (YD3)	RIP RAP (TONS)	FILTER FABRIC (YD2)
-L-	23+00 - 24+25 RT.	65	70	190

DETAIL 'G' CUT DITCH (Not to Scale)

Min. D = 1.5 Ft.
 Min. d = 1.5 Ft.

Type of Liner = Class 'B' Rip-Rap

LINE	STA. TO STA.	RIP RAP (TONS)	FILTER FABRIC (YD2)
-L-	23+10 - 24+00 LT.	42	117

DETAIL 'H' EMBANKMENT EXCAVATION (Not to Scale)

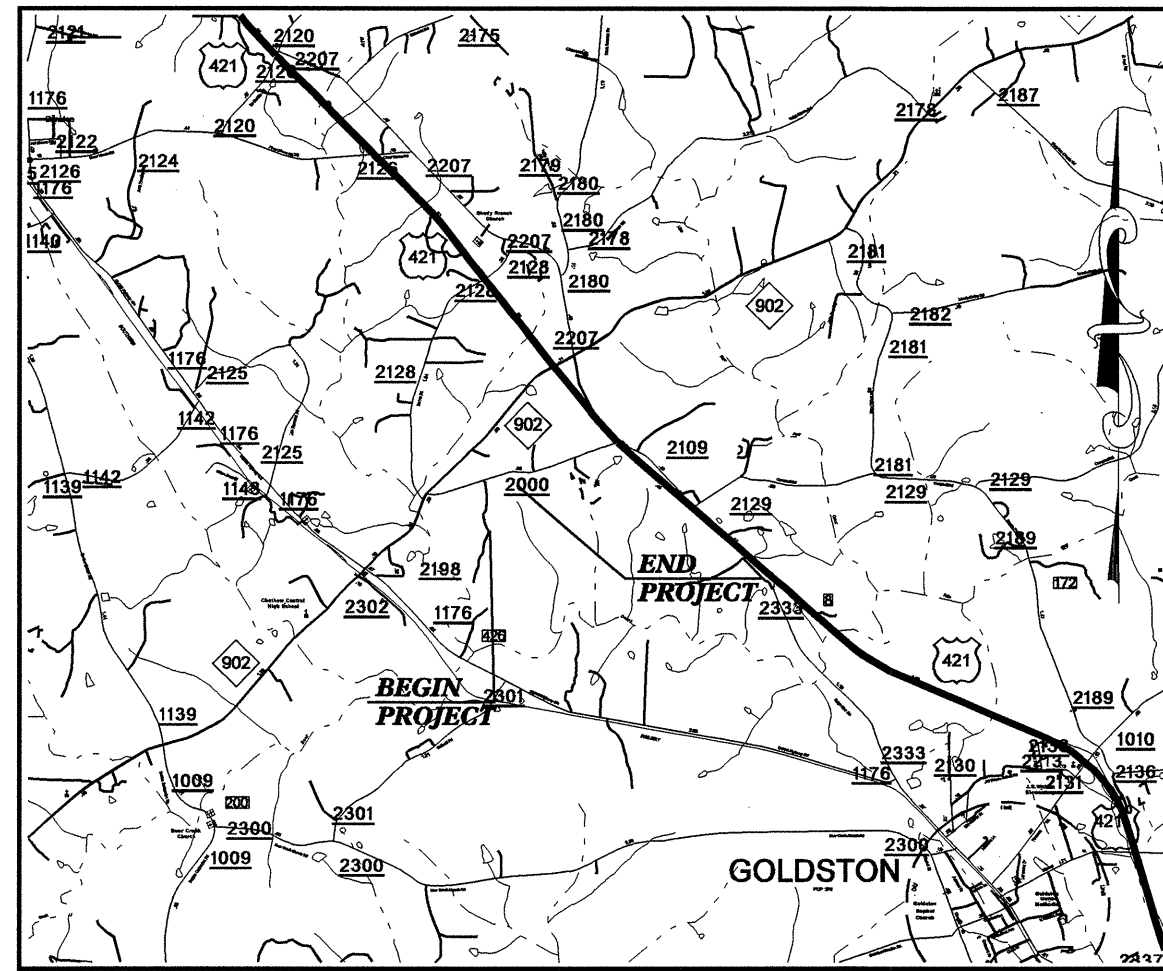
Min. D = 1.5 Ft.
 Min. d = 1.5 Ft.

LINE	STA. TO STA.	D.D.E. (YD3)
-L-	22+40 - 23+82 LT.	250.0

5/14/99
 20-DEC-2007 14:15
 J:\b4063.ut.uc2.psh04.dgn

TIP PROJECT: B-4063

See Sheet 1-A For Index of Sheets
See Sheet 1-B For Conventional Symbols



VICINITY MAP
(NOT TO SCALE)

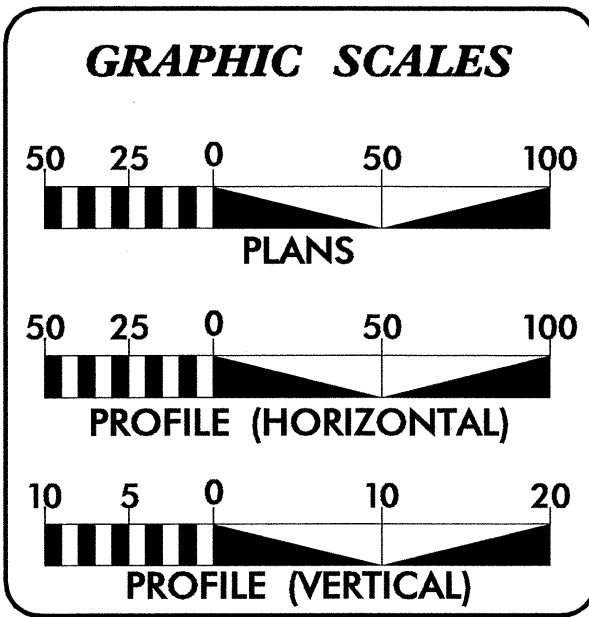
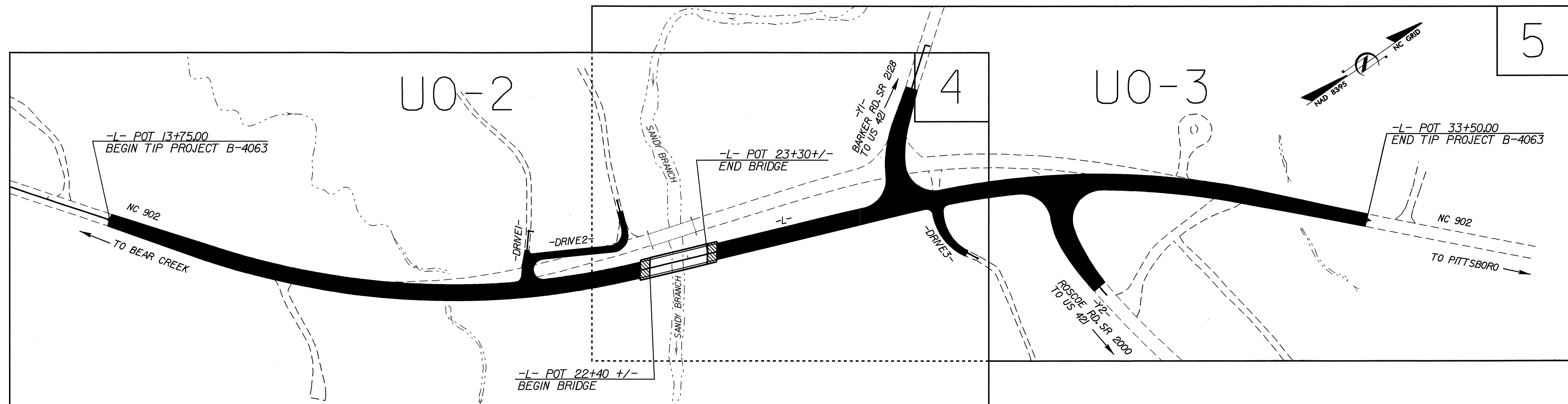
STATE OF NORTH CAROLINA
DIVISION OF HIGHWAYS

UTILITY BY OTHERS PLANS
CHATHAM COUNTY

LOCATION: BRIDGE NO. 20 OVER SANDY BRANCH AND APPROACHES ON NC 902

TYPE OF WORK: UTILITY RELOCATION

T.I.P. NO.	SHEET NO.
B-4063	UO-1

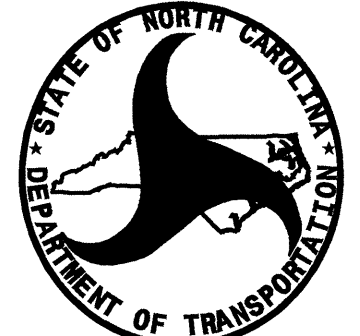


INDEX OF SHEETS

SHEET NO.	DESCRIPTION
UO-1	TITLE SHEET
UO-2 THRU UO-3	UTILITY BY OTHERS PLAN SHEETS

UTILITY OWNERS ON PROJECT

- EMBARQ
- PROGRESS ENERGY
- CENTRAL EMC



PREPARED IN THE OFFICE OF:
DIVISION OF HIGHWAYS
DESIGN SERVICES
UTILITY SECTION

1591 MAIL SERVICES CENTER
RALEIGH NC 27699-1591
PHONE (919) 250-4128
FAX (919) 250-4119

Roger Worthington, P.E. UTILITIES SECTION ENGINEER
Corey Bousquet, P.E. UTILITIES SQUAD LEADER PROJECT ENGINEER
Stephanie Athey UTILITIES PROJECT DESIGNER

UTILITIES BY OTHERS

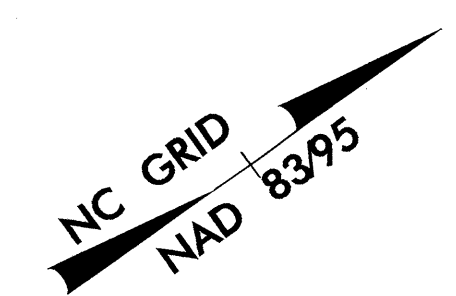
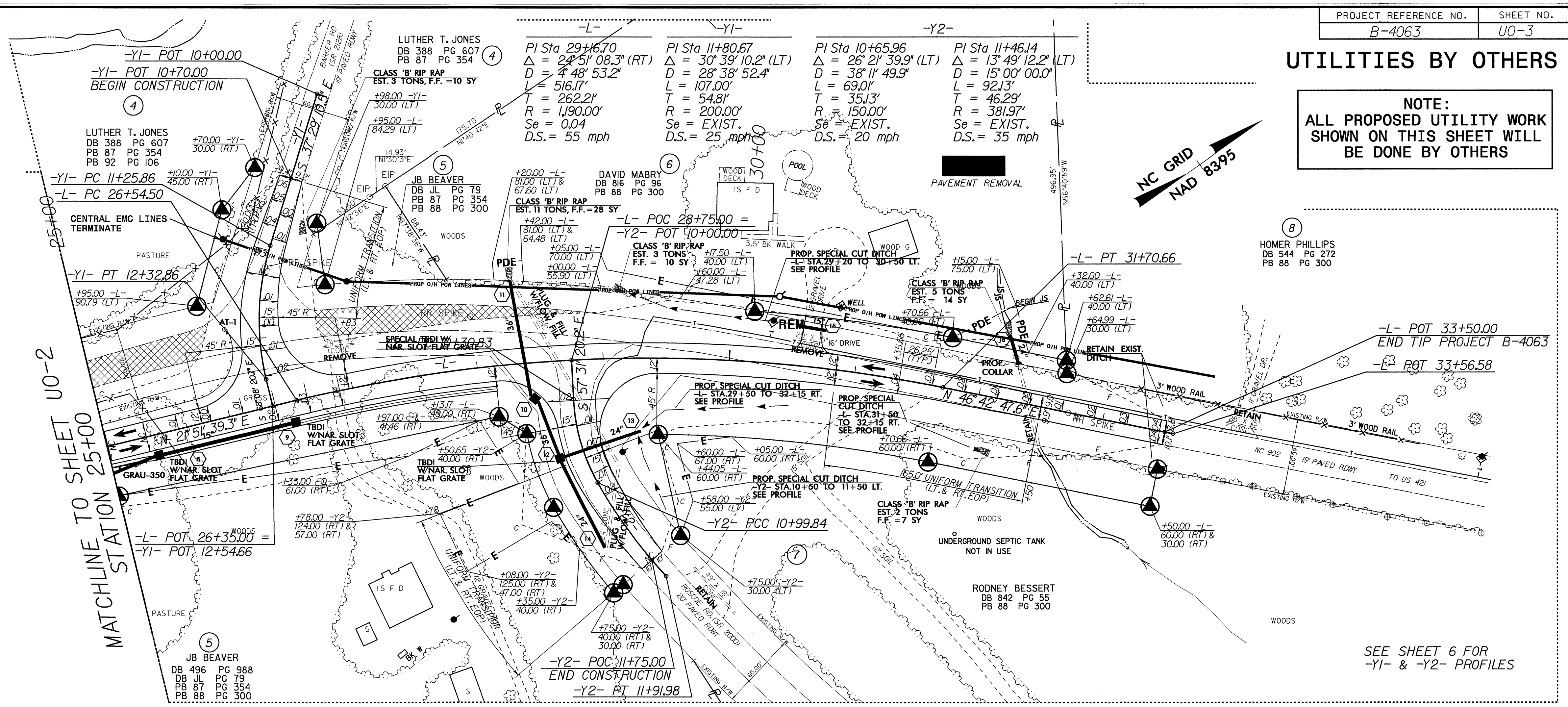
NOTE:
ALL PROPOSED UTILITY WORK SHOWN ON THIS SHEET WILL BE DONE BY OTHERS

TRAFFIC DIAGRAM

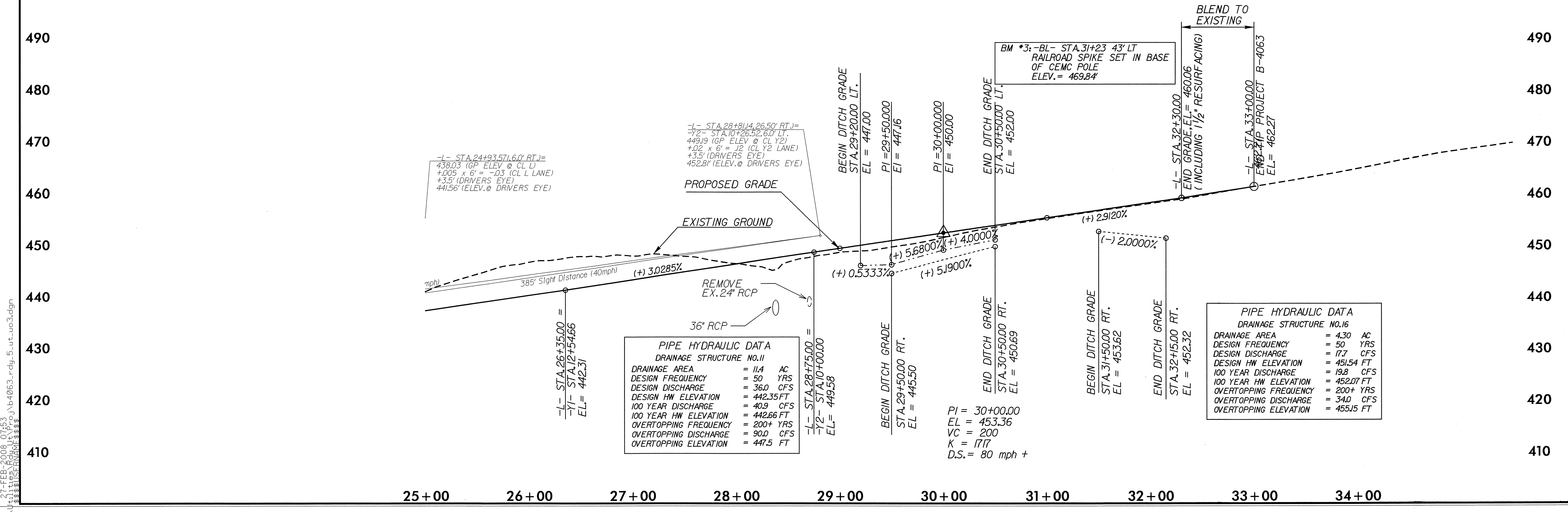
1700	200	200	1700
3400	400	400	3400
NC 902			
ADT 2007			
ADT 2030			

TRAFFIC DIAGRAM

1700	30	30	1700
3400	60	60	3400
NC 902			
ADT 2007			
ADT 2030			



SEE SHEET 6 FOR
-Y1- & -Y2- PROFILES



5/14/99
27-FEB-2008 07:53
R:\N\11\1199\Road\11\B-4063-rd_u0-3.dgn