

TIP PROJECT: B-4063

STATE OF NORTH CAROLINA
 DIVISION OF HIGHWAYS
 PLAN FOR PROPOSED
 HIGHWAY EROSION CONTROL
CHATHAM COUNTY

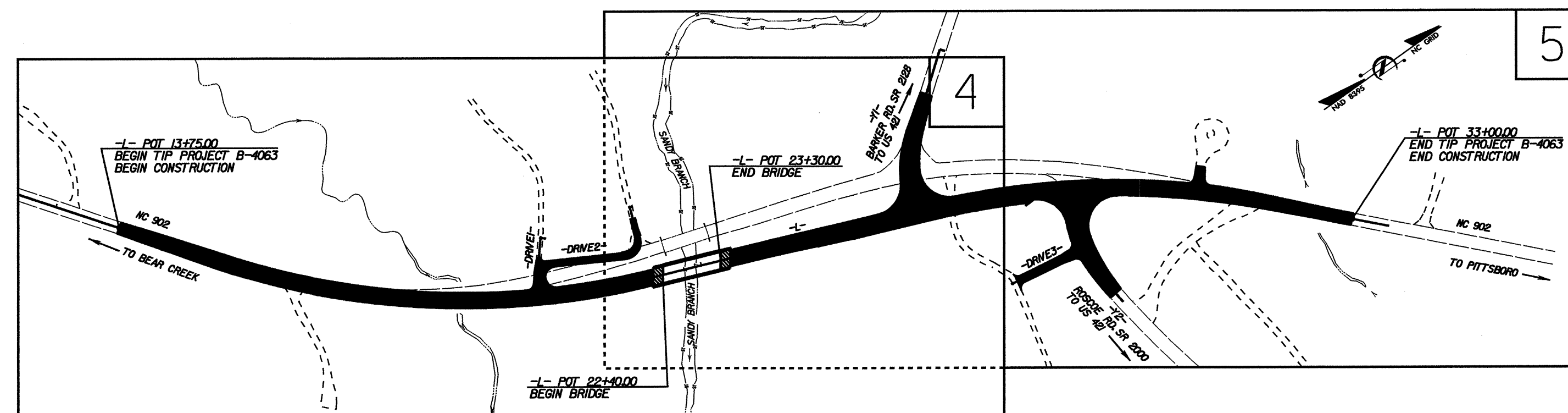
LOCATION: BRIDGE NO. 20 OVER SANDY BRANCH ON NC 902
TYPE OF WORK: GRADING, DRAINAGE, PAVING, AND STRUCTURE

STATE	STATE PROJECT REFERENCE NO.	SHEET NO.	TOTAL SHEETS
N.C.	B-4063	EC-1	
STATE PROJ. NO.	F.A. PROJ. NO.	DESCRIPTION	

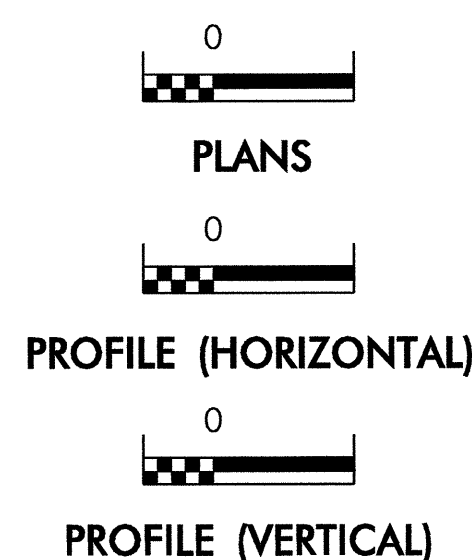
EROSION AND SEDIMENT CONTROL MEASURES

Std. #	Description	Symbol
	Streambank Reforestation.....	
1630.03	Temporary Silt Ditch.....	
1630.05	Temporary Diversion.....	
1605.01	Temporary Silt Fence.....	
1606.01	Special Sediment Control Fence.....	
1622.01	Temporary Berms and Slope Drains.....	
1630.01	Riser Basin.....	
1630.02	Silt Basin Type B.....	
1633.01	Temporary Rock Silt Check Type-A.....	
	Temporary Rock Silt Check Type-B.....	
1634.01	Temporary Rock Sediment Dam Type-A.....	
1634.02	Temporary Rock Sediment Dam Type-B.....	
1635.01	Rock Pipe Inlet Sediment Trap Type-A.....	
1635.02	Rock Pipe Inlet Sediment Trap Type-B.....	
1630.04	Stilling Basin.....	
	Rock Inlet Sediment Trap:	
1632.01	Type A.....	
1632.02	Type B.....	
1632.03	Type C.....	
	Skimmer Basin.....	
	Tiered Skimmer Basin.....	
	Infiltration Basin.....	

**THIS PROJECT CONTAINS
 EROSION CONTROL PLANS
 FOR CLEARING AND
 GRUBBING PHASE OF
 CONSTRUCTION.**



GRAPHIC SCALE



ROADSIDE ENVIRONMENTAL UNIT
 DIVISION OF HIGHWAYS
 STATE OF NORTH CAROLINA

Prepared In the Office of:
ROADSIDE ENVIRONMENTAL UNIT
 1 South Wilmington St.
 Raleigh, NC 27611
2006 STANDARD SPECIFICATIONS

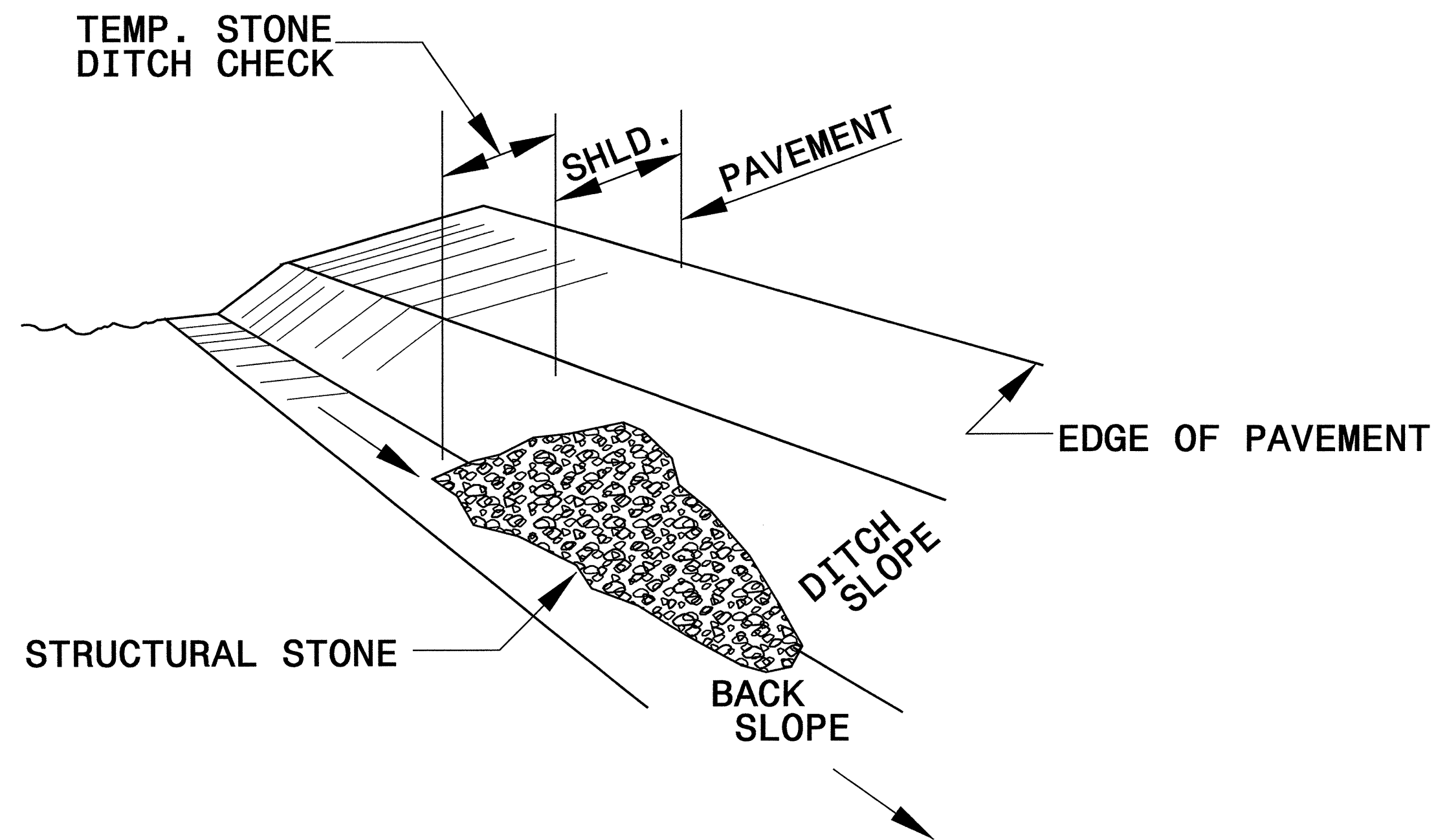
Roadway Standard Drawings

The following roadway english standards as appear in "Roadway Standard Drawings"- Roadway Design Unit - N. C. Department of Transportation - Raleigh, N. C., dated July 18, 2006 and the latest revision thereto are applicable to this project and by reference hereby are considered a part of these plans.

- | | |
|--|--|
| 1605.01 Temporary Silt Fence | 1632.03 Rock Inlet Sediment Trap Type C |
| 1606.01 Special Sediment Control Fence | 1633.01 Temporary Rock Silt Check Type A |
| 1607.01 Gravel Construction Entrance | 1634.02 Temporary Rock Sediment Dam Type B |
| 1622.01 Temporary Berms and Slope Drains | 1635.01 Rock Pipe Inlet Sediment Trap Type A |
| 1630.02 Silt Basin Type B | 1635.02 Rock Pipe Inlet Sediment Trap Type B |
| 1630.03 Temporary Silt Ditch | |
| 1630.05 Temporary Diversion | |

PROJECT REFERENCE NO. <i>B-4063</i>	SHEET NO. <i>EC-2</i>
RW SHEET NO.	
ROADWAY DESIGN ENGINEER	HYDRAULICS ENGINEER

TEMPORARY ROCK SILT CHECK TYPE 'B' DETAIL

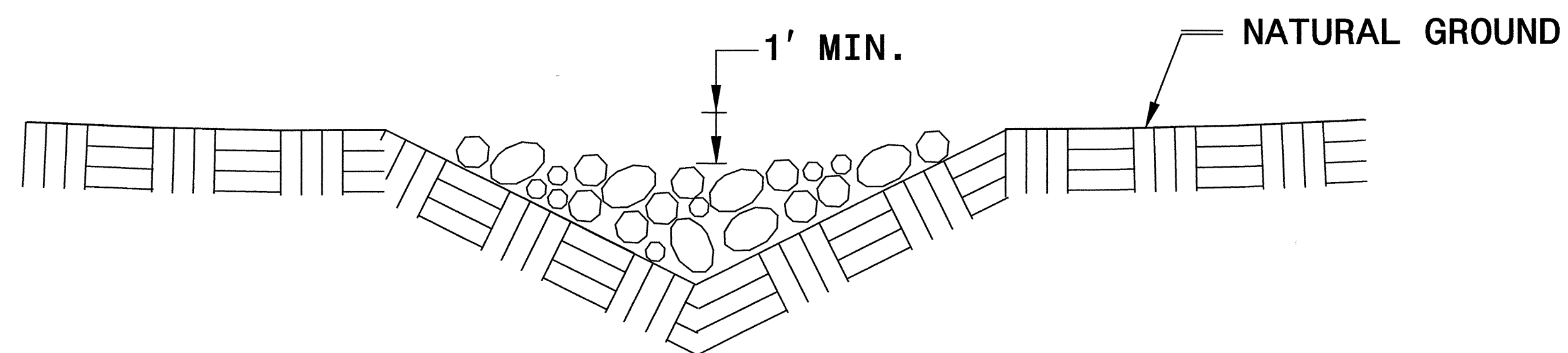


ISOMETRIC VIEW

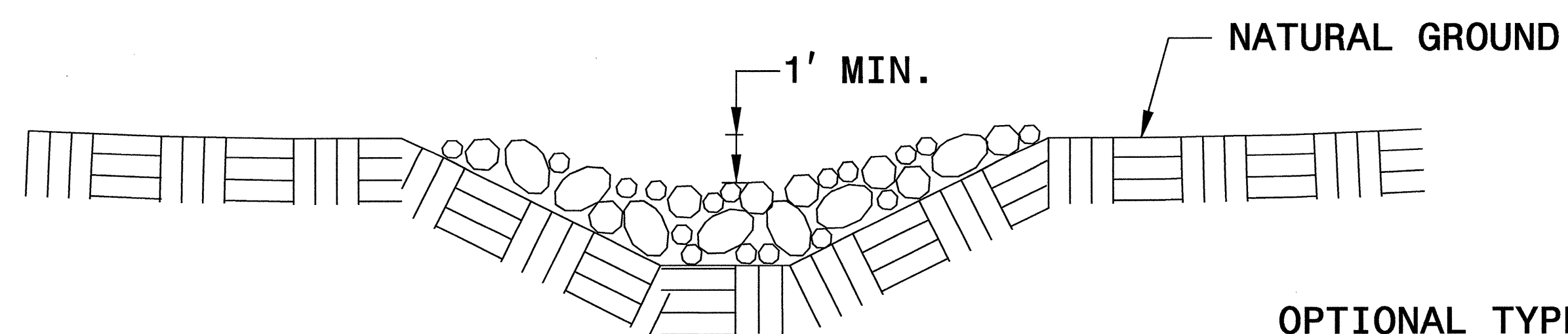
NOTES:

USE CLASS 'B' EROSION CONTROL STONE FOR STRUCTURAL STONE.

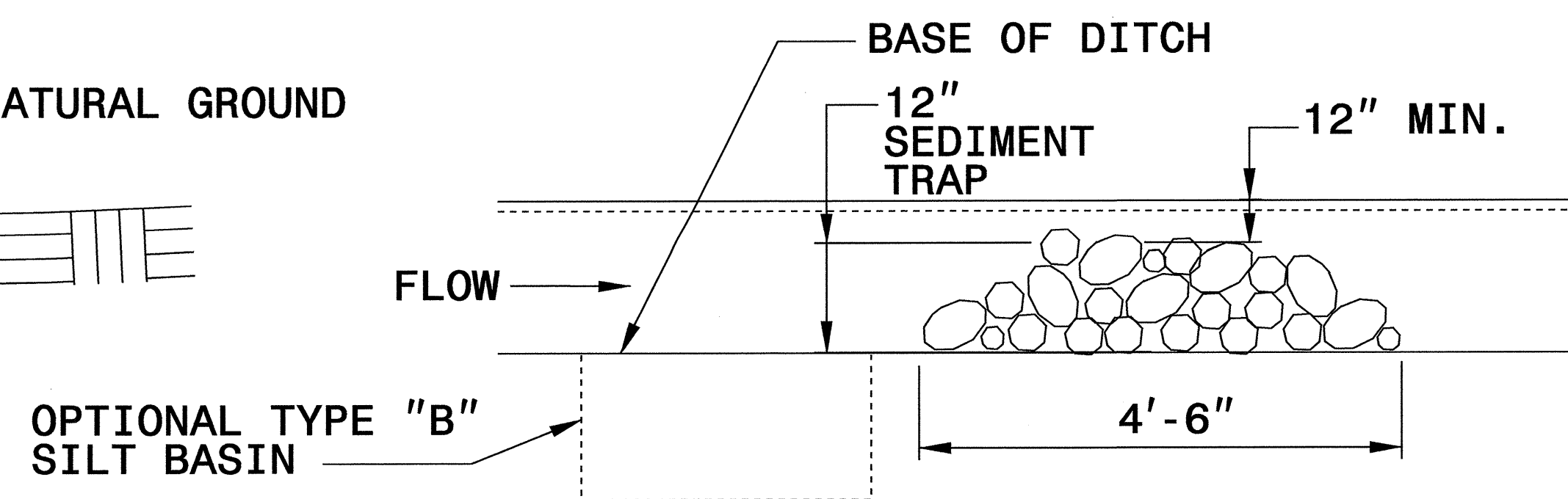
THE ENGINEER MAY DIRECT THE OPTION OF CLASS "A" STONE FOR SITES HAVING LESS THAN ONE (1) ACRE DRAINAGE AREA AND A DITCH GRADE LESS THAN 3%.



**CROSS SECTION
VEE DITCH**



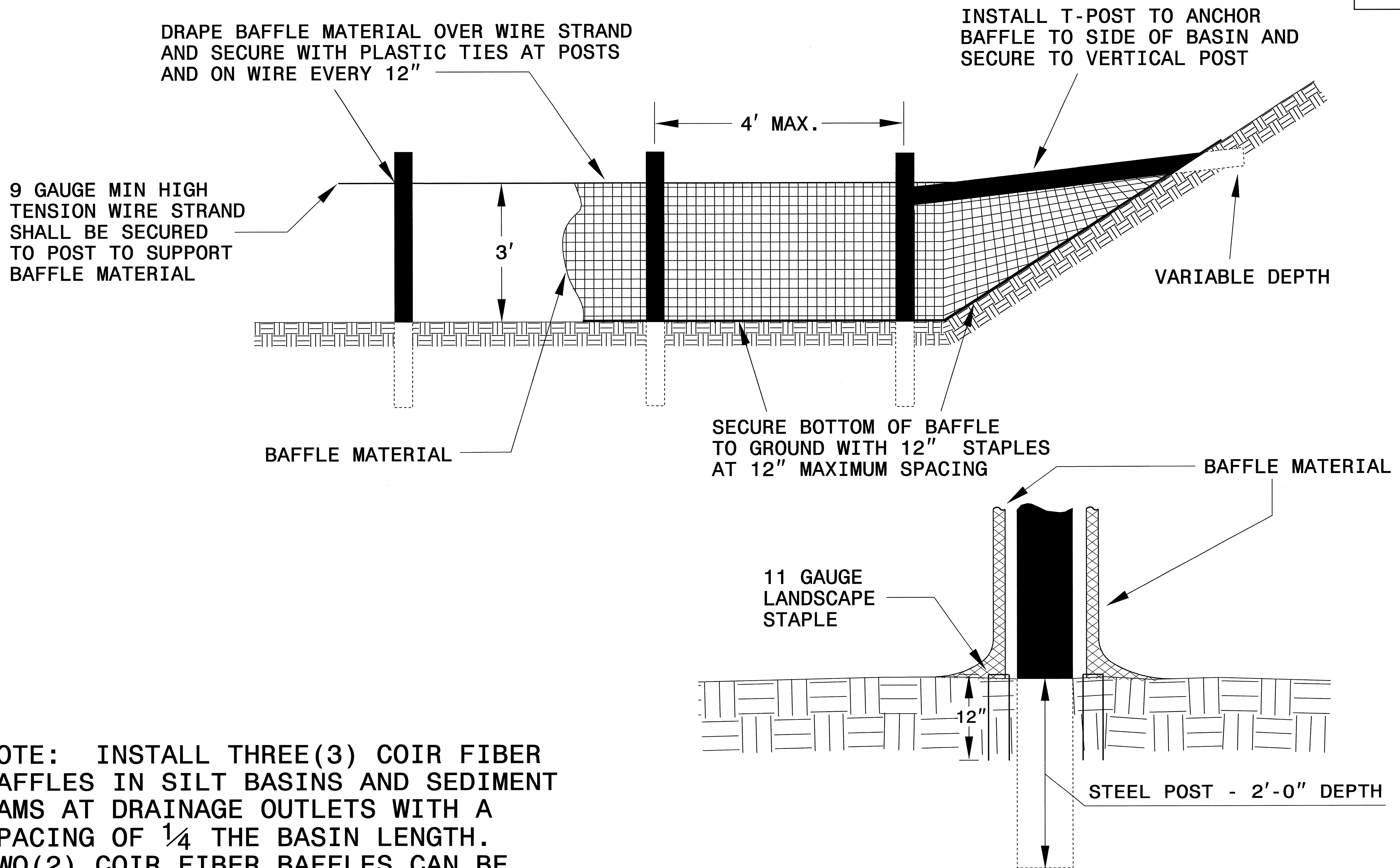
**CROSS SECTION
TRAPEZOIDAL DITCH**



ELEVATION VIEW

PROJECT REFERENCE NO. B-4063	SHEET NO. EC-2A
RW SHEET NO.	
ROADWAY DESIGN ENGINEER	HYDRAULICS ENGINEER

COIR FIBER BAFFLE DETAIL

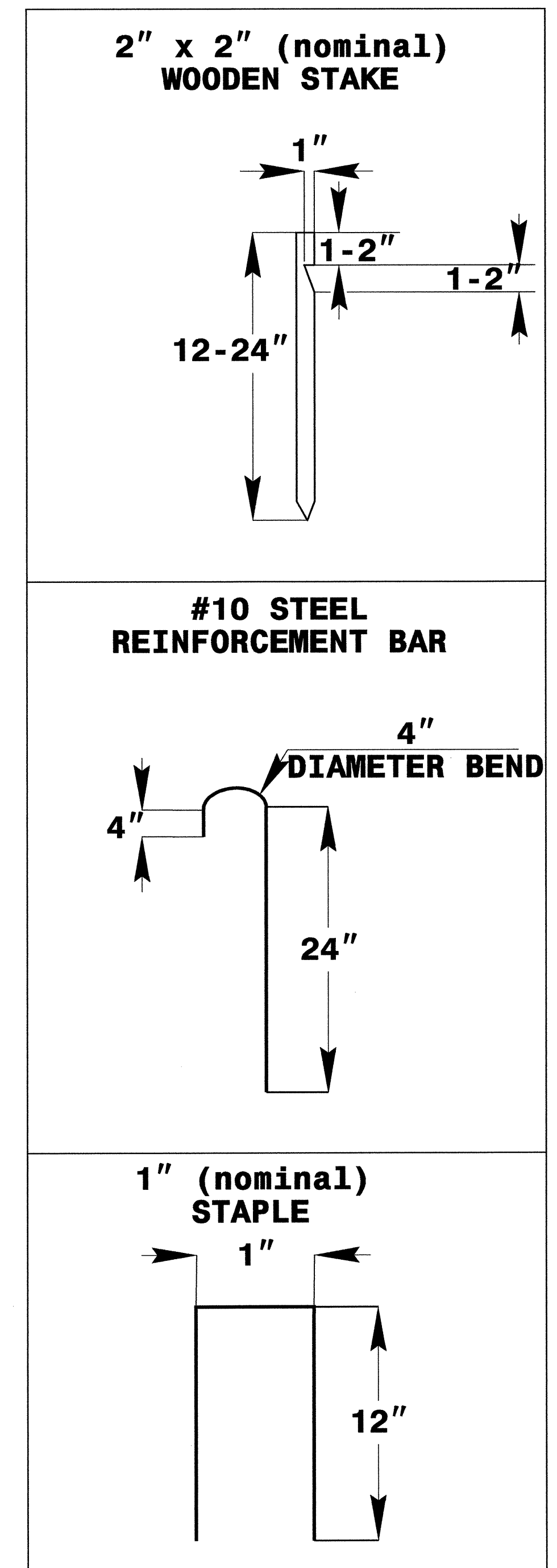
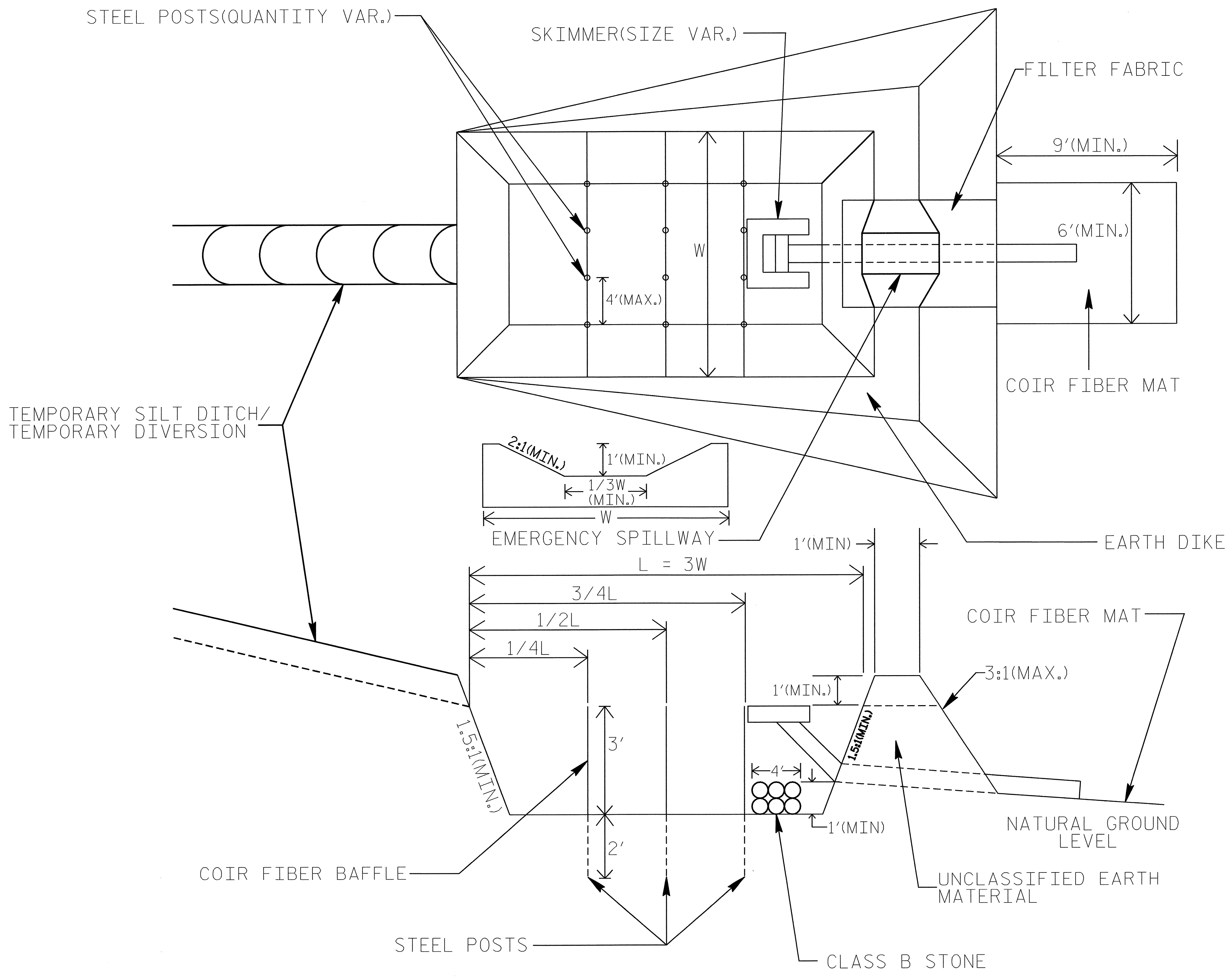


NOTE: INSTALL THREE(3) COIR FIBER BAFFLES IN SILT BASINS AND SEDIMENT DAMS AT DRAINAGE OUTLETS WITH A SPACING OF $\frac{1}{4}$ THE BASIN LENGTH. TWO(2) COIR FIBER BAFFLES CAN BE INSTALLED IN SILT BASINS AND DAMS LESS THAN 20 FT. IN LENGTH WITH A SPACING OF $\frac{1}{3}$ THE BASIN LENGTH.

BAFFLE MATERIAL SHALL BE SECURED TO THE BOTTOM AND SIDES OF BASIN USING 12" LANDSCAPE STAPLES

SKIMMER BASIN WITH BAFFLES DETAIL

PROJECT REFERENCE NO. B-4063	SHEET NO. EC-2B
RW SHEET NO.	
ROADWAY DESIGN ENGINEER	HYDRAULICS ENGINEER

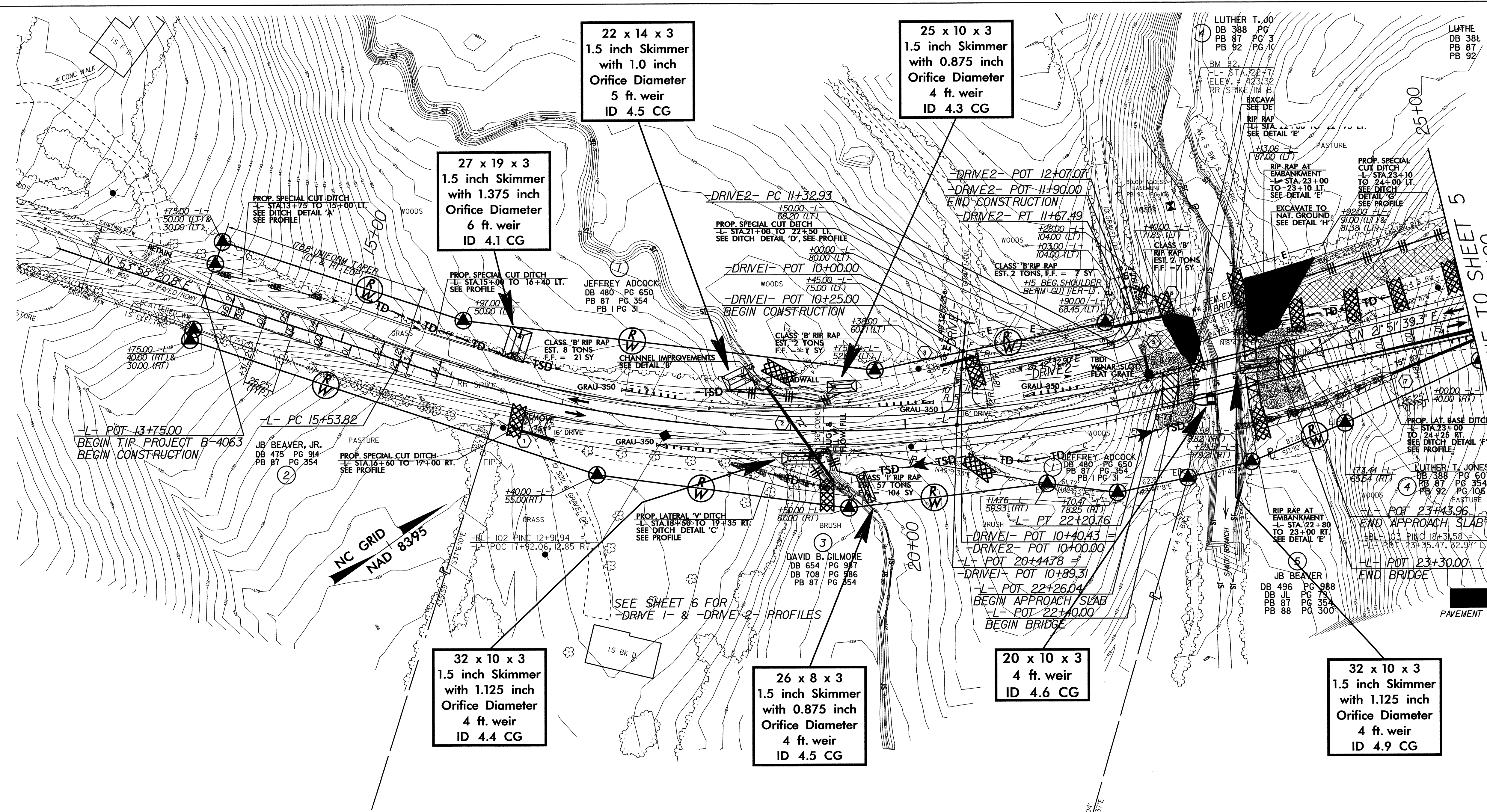


COIR FIBER MAT ANCHOR OPTIONS

- NOTES:**
1. SEED AND PLACE MATTING FOR EROSION CONTROL ON SIDESLOPES.
 2. LIMIT EARTH DIKE HEIGHT TO 5 FT.

PROJECT REFERENCE NO.	SHEET NO.
B-4063	EC-4/CONST.4
RW SHEET NO.	
ROADWAY DESIGN ENGINEER	HYDRAULICS ENGINEER

SEE SHEETS S-1 THRU S-4 FOR STRUCTURE PLANS



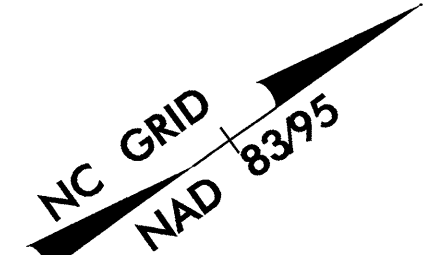
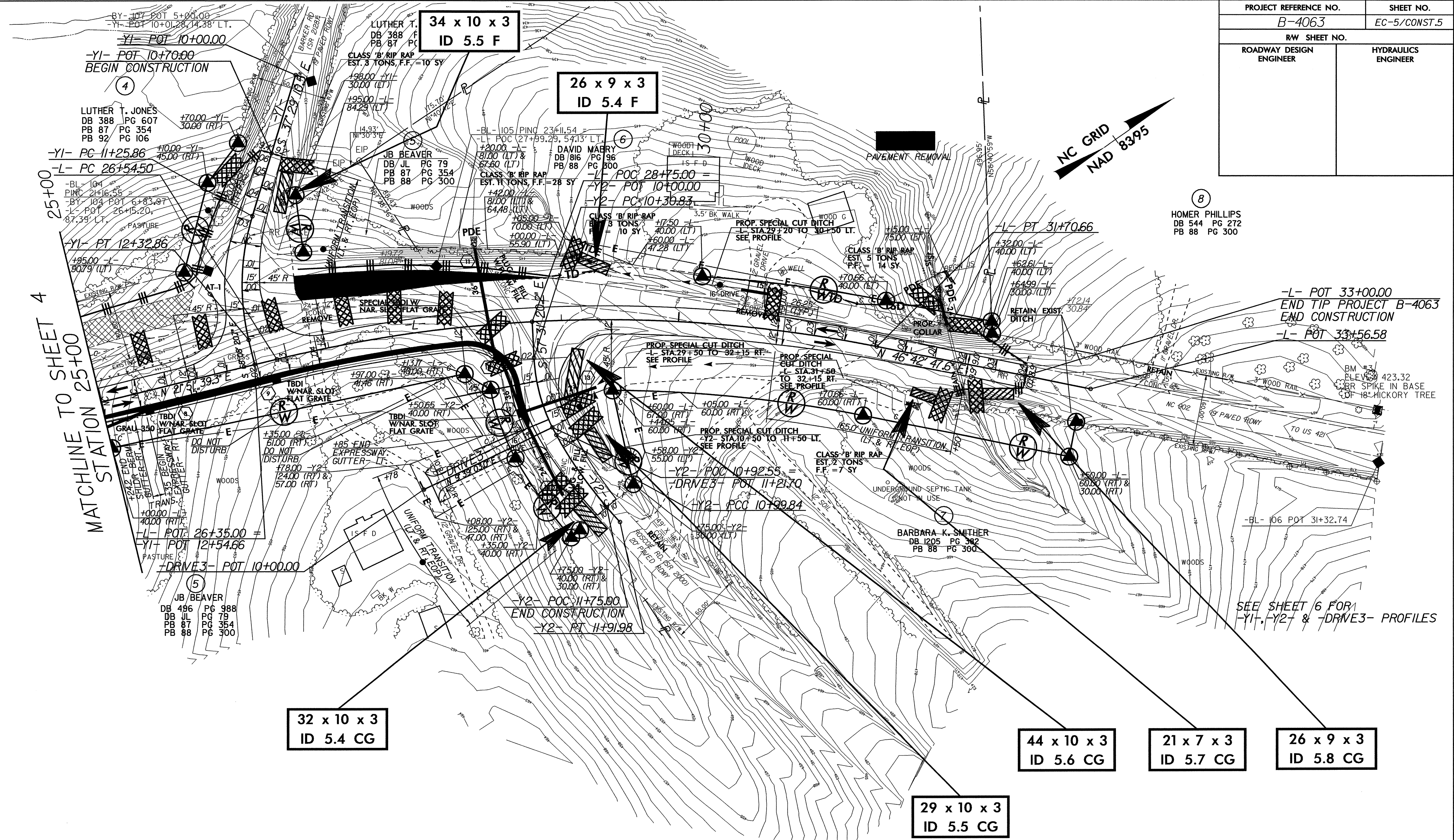
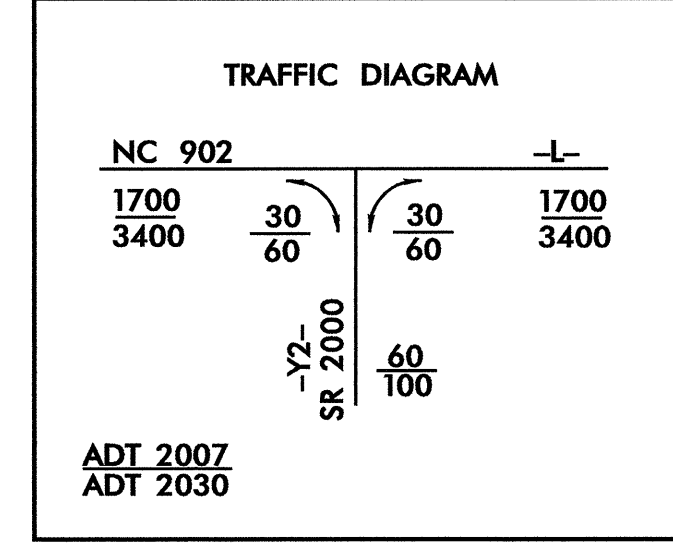
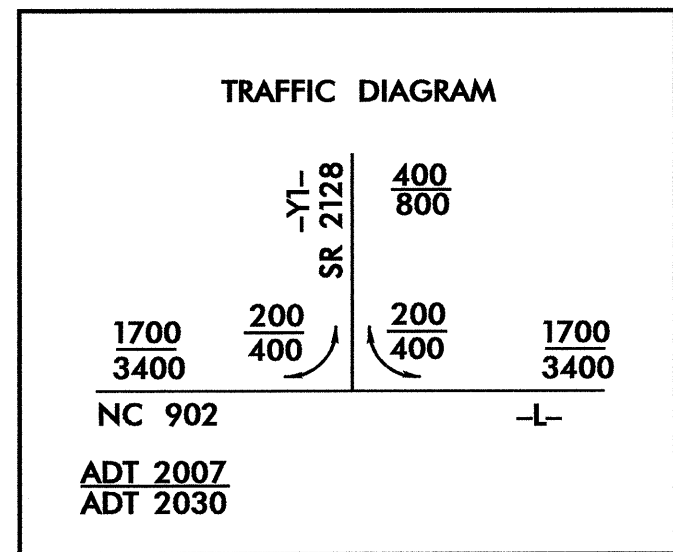
NOTE: UTILIZE TEMPORARY ROCK SEDIMENT DAM TYPE - B AND SKIMMER BASIN AS STILLING BASIN WHERE APPLICABLE.

NOTE: PLACE TEMPORARY ROCK SEDIMENT DAMS TYPE - B AND TEMPORARY ROCK SILT CHECKS TYPE - A AT DRAINAGE OUTLETS.

CLEARING AND GRUBBING EROSION CONTROL FOR CONSTRUCTION SHEET 4

6DATER
 6TIME
 6FILES

PROJECT REFERENCE NO.	SHEET NO.
B-4063	EC-5/CONST.5
RW SHEET NO.	
ROADWAY DESIGN ENGINEER	HYDRAULICS ENGINEER



ⓑ HOMER PHILLIPS
DB 544 PG 272
PB 88 PG 300

-L- POT 33+00.00
END TIP PROJECT B-4063
END CONSTRUCTION
-L- POT 33+56.58

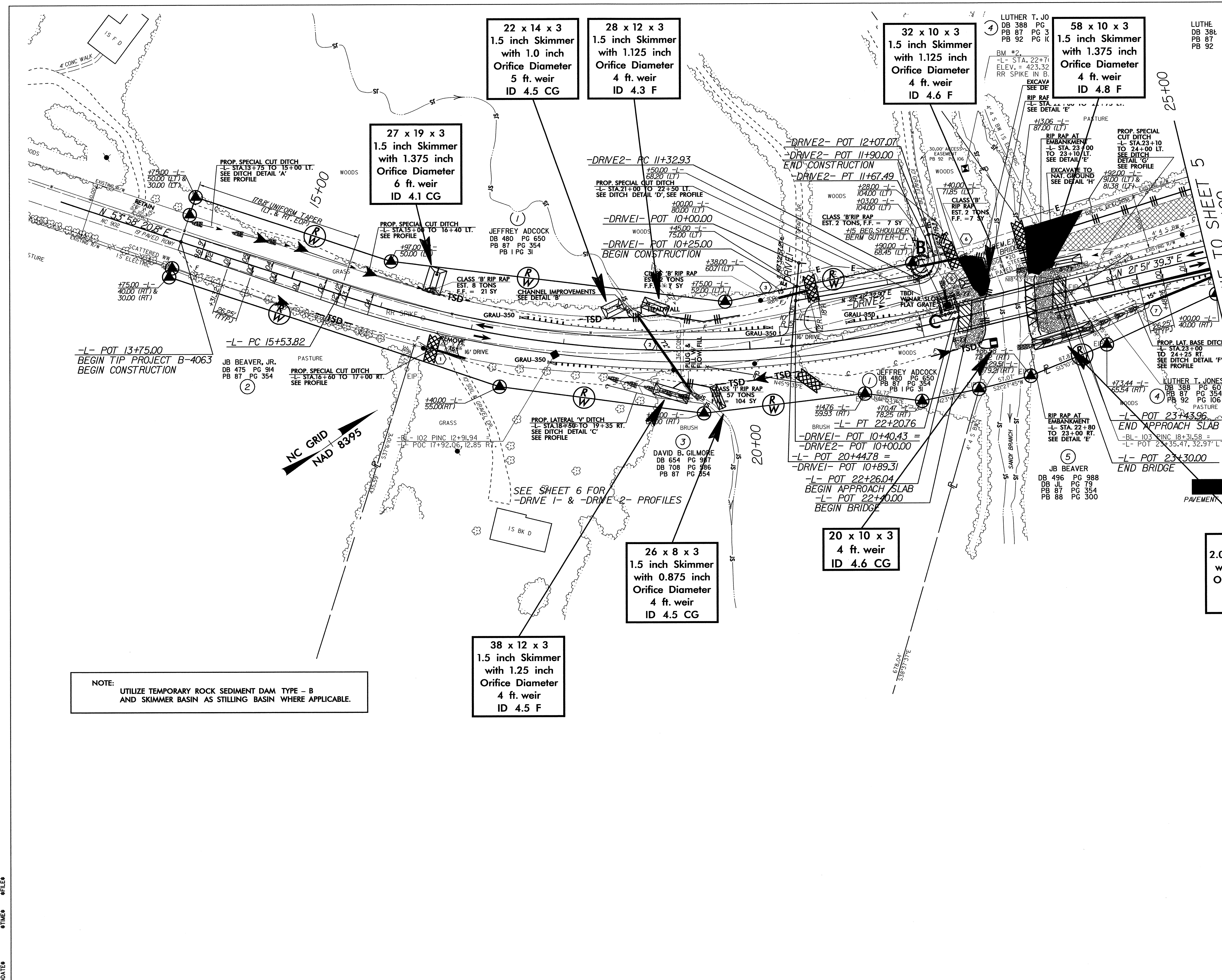
SEE SHEET 6 FOR
-Y1-, -Y2- & -DRIVE3- PROFILES

NOTE:
PLACE TEMPORARY ROCK SEDIMENT DAMS TYPE - B
AND TEMPORARY ROCK SILT CHECKS TYPE - A AT
DRAINAGE OUTLETS.

CLEARING AND GRUBBING
EROSION CONTROL FOR
CONSTRUCTION SHEET 5

PROJECT REFERENCE NO.	SHEET NO.
B-4063	EC-6/CONST.4
RW SHEET NO.	
ROADWAY DESIGN ENGINEER	HYDRAULICS ENGINEER

SEE SHEETS S-1 THRU S-5 FOR STRUCTURE PLANS



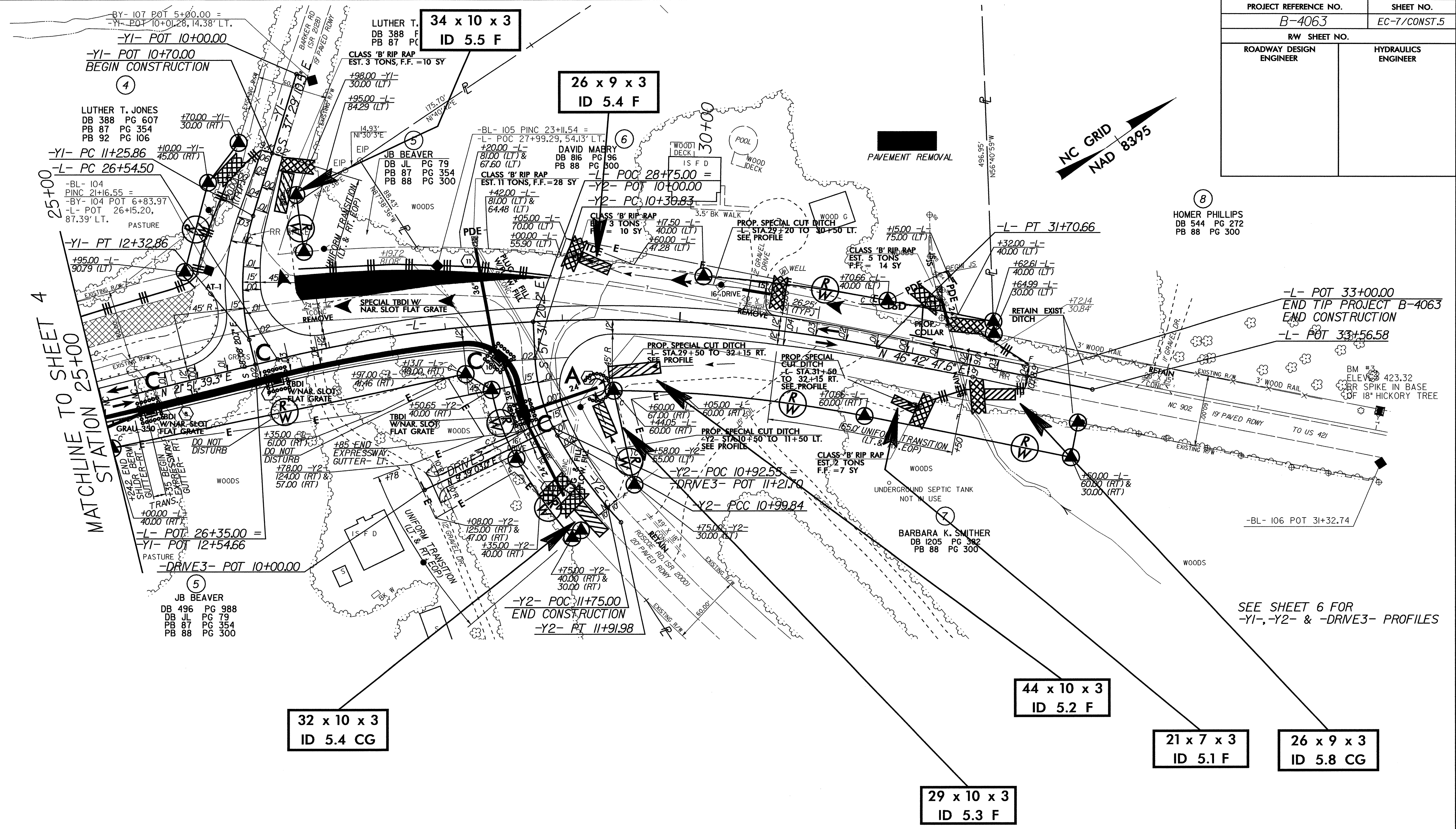
NOTE:
UTILIZE TEMPORARY ROCK SEDIMENT DAM TYPE - B
AND SKIMMER BASIN AS STILLING BASIN WHERE APPLICABLE.

DATE: TIME: FILE:

PROJECT REFERENCE NO.	SHEET NO.
B-4063	EC-7/CONST.5
RW SHEET NO.	
ROADWAY DESIGN ENGINEER	HYDRAULICS ENGINEER

TRAFFIC DIAGRAM			
	Y1	SR 212B	400
			800
1700	200	200	1700
3400	400	400	3400
NC 902		-L-	
ADT 2007			
ADT 2030			

TRAFFIC DIAGRAM			
	Y2	SR 2000	60
			100
1700	30	30	1700
3400	60	60	3400
NC 902		-L-	
ADT 2007			
ADT 2030			



#DATE #TIME #FILES