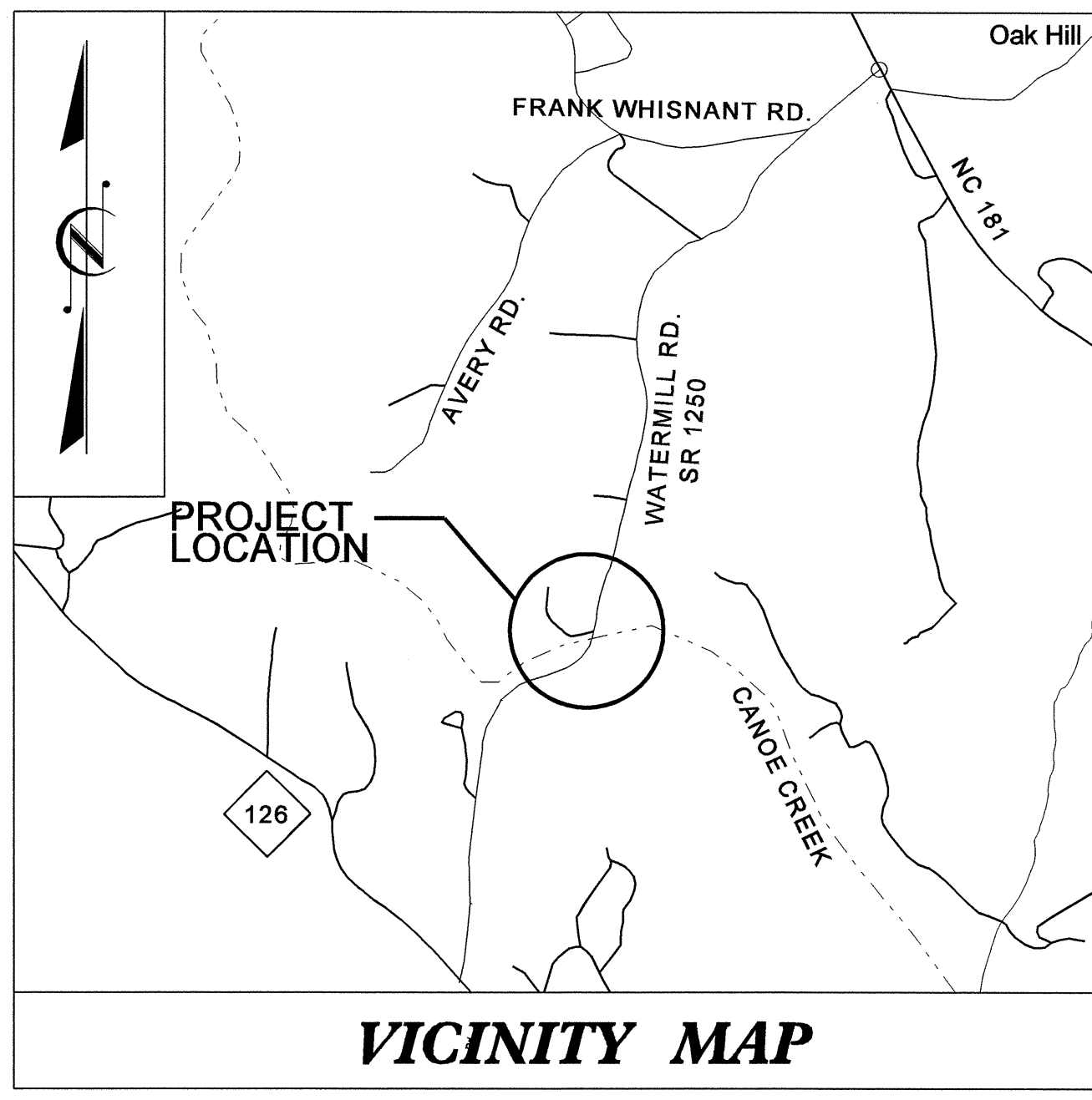


24-SEP-2007 08:12  
 F:\utilities\rdy\ut\proj\b3814\ut\_title\_uoL.psh.dgn  
 \$\$\$USERNAME\$\$\$

**TIP PROJECT: B-3814**

**CONTRACT: C201787**



**VICINITY MAP**

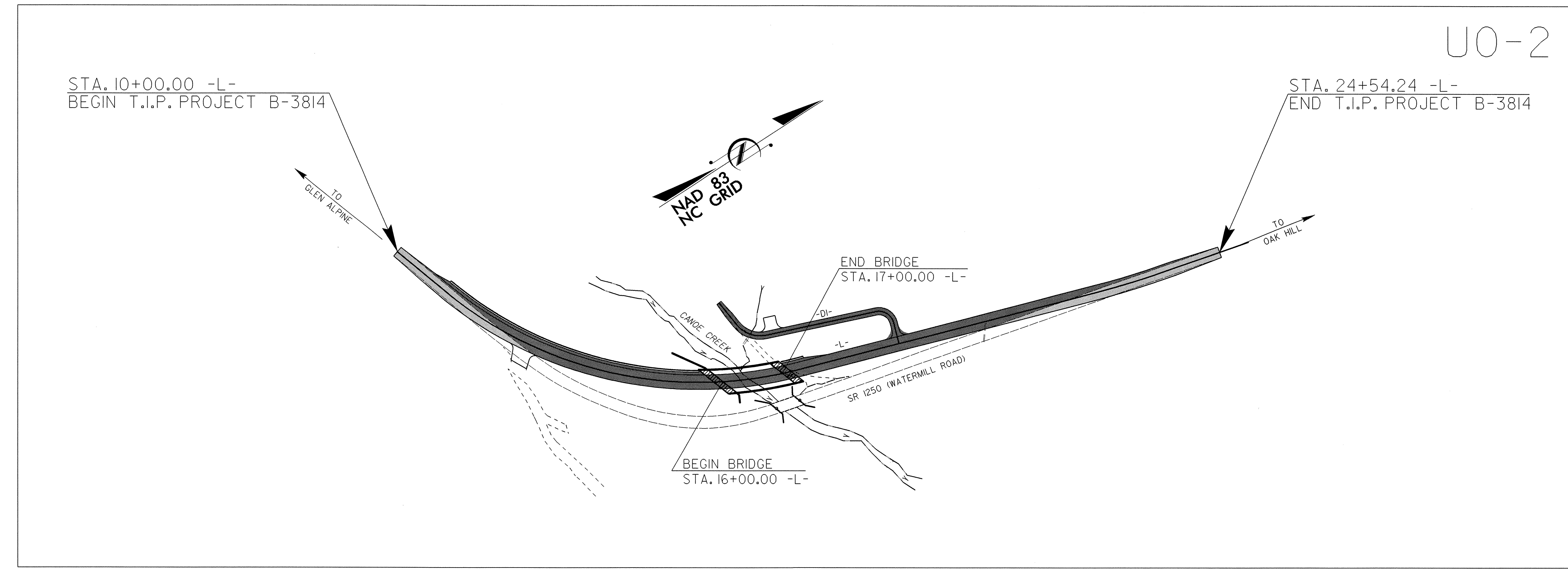
STATE OF NORTH CAROLINA  
DIVISION OF HIGHWAYS

**UTILITY BY OTHERS PLANS  
BURKE COUNTY**

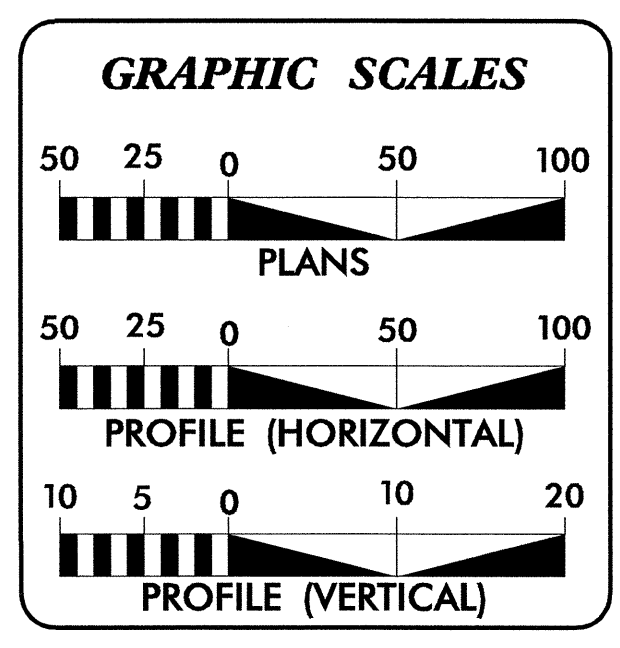
**LOCATION: BRIDGE 56 OVER CANOE CREEK ON SR 1250**

**TYPE OF WORK: UTILITY CONSTRUCTION**

T.I.P. NO.	SHEET NO.
<b>B-3814</b>	<b>UO-1</b>



UO-2



<b>INDEX OF SHEETS</b>	
<u>SHEET NO.</u>	<u>DESCRIPTION</u>
UO-1	TITLE SHEET
UO-2	UTILITY BY OTHERS PLAN SHEET

<b>UTILITY OWNERS ON PROJECT</b>	
(1)	CITY OF MORGANTON - WATER AND SANITARY SEWER
(2)	A T & T OF NORTH CAROLINA - TELEPHONE

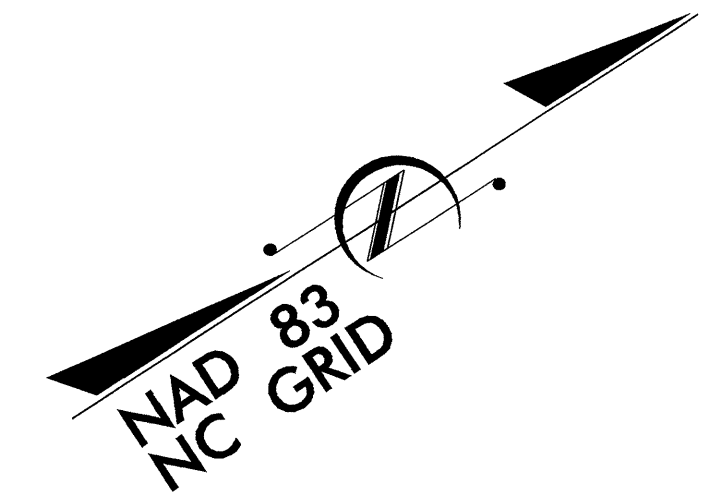
PREPARED IN THE OFFICE OF:  
**DIVISION OF HIGHWAYS  
 PROJECT SERVICES  
 UTILITY SECTION**

1591 MAIL SERVICES CENTER  
 RALEIGH NC 27699-1591  
 PHONE (919) 250-4128  
 FAX (919) 250-4119

<b>Roger Worthington, P.E.</b>	UTILITIES SECTION ENGINEER
<b>R. B. Wilkins, P.E.</b>	UTILITIES SQUAD LEADER PROJECT ENGINEER
<b>John A. Nigro, P.E.</b>	UTILITIES PROJECT DESIGNER

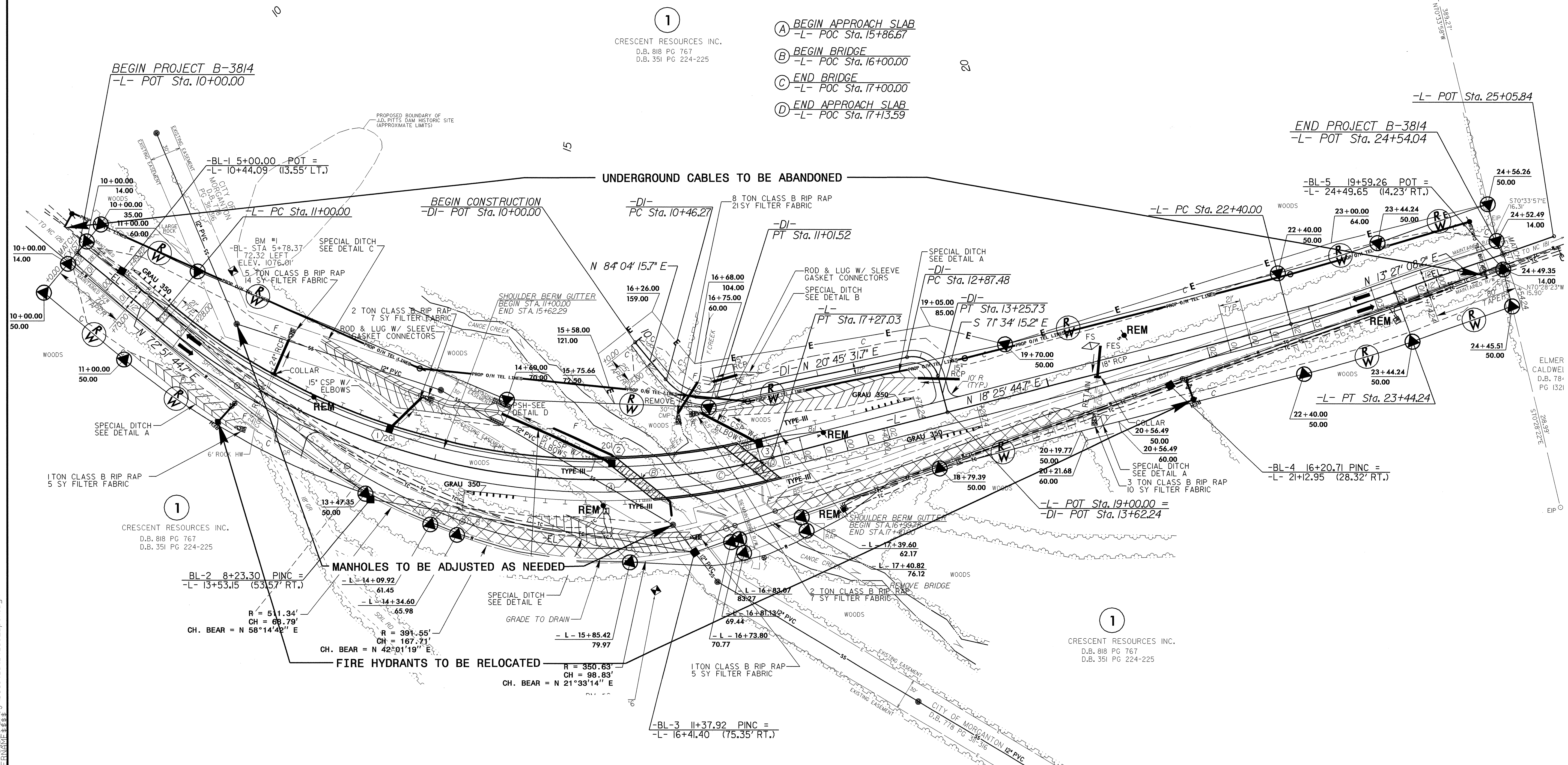
# UTILITIES BY OTHERS

**NOTE:**  
ALL PROPOSED UTILITY WORK  
SHOWN ON THIS SHEET WILL  
BE DONE BY OTHERS



LUTHER & DARLENE WISEMAN  
D.B. 825 PG 761

5/14/99  
24-SEP-2007 09:00  
r:\utilities\cadd\proj\3814\ut\_4\_uc2\_psh.dgn



- ① CRESCENT RESOURCES INC.  
D.B. 818 PG 767  
D.B. 351 PG 224-225
- ① **A** BEGIN APPROACH SLAB  
-L- POC Sta. 15+86.67
- ① **B** BEGIN BRIDGE  
-L- POC Sta. 16+00.00
- ① **C** END BRIDGE  
-L- POC Sta. 17+00.00
- ① **D** END APPROACH SLAB  
-L- POC Sta. 17+13.59

BEGIN PROJECT B-3814  
-L- POT Sta. 10+00.00

END PROJECT B-3814  
-L- POT Sta. 24+54.04

-BL-1 5+00.00 POT =  
-L- 10+44.09 (13.55' LT.)

-BL-5 19+59.26 POT =  
-L- 24+49.65 (14.23' RT.)

BL-2 8+23.30 PINC =  
-L- 13+53.15 (53.57' RT.)

-BL-4 16+20.71 PINC =  
-L- 21+12.95 (28.32' RT.)

-BL-3 11+37.92 PINC =  
-L- 16+41.40 (75.35' RT.)

CRESCENT RESOURCES INC.  
D.B. 818 PG 767  
D.B. 351 PG 224-225

CRESCENT RESOURCES INC.  
D.B. 818 PG 767  
D.B. 351 PG 224-225

ELMER CALDWELL  
D.B. 78+  
PG 1321