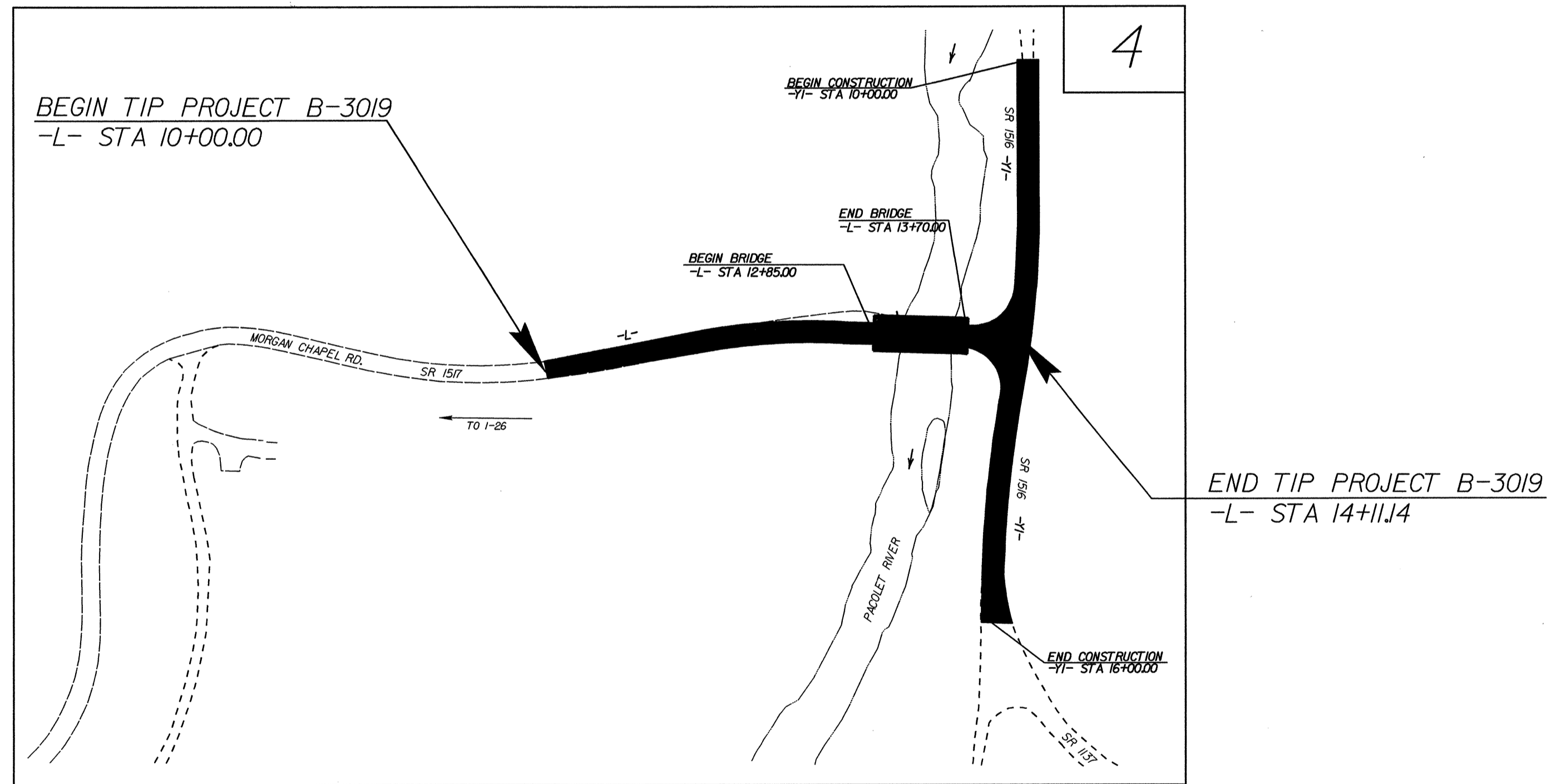
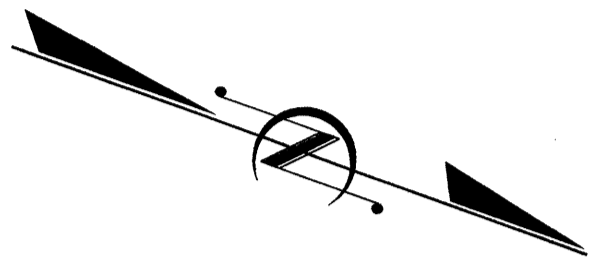


TIP PROJECT: B-3019

STATE OF NORTH CAROLINA
 DIVISION OF HIGHWAYS
 PLAN FOR PROPOSED
 HIGHWAY EROSION CONTROL
POLK COUNTY

LOCATION: BRIDGE NO. 19 OVER PACOLET RIVER ON SR 1517
 (MORGAN CHAPEL RD.)

TYPE OF WORK: GRADING, PAVING, DRAINAGE, STRUCTURE
 AND GUARDRAIL

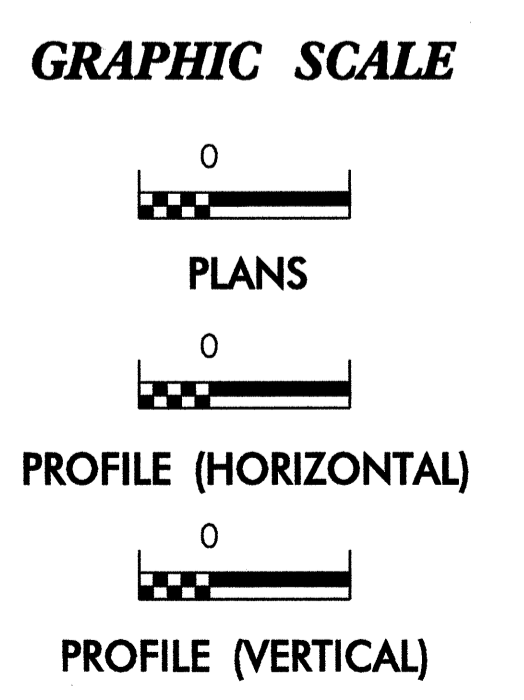


| STATE | STATE PROJECT REFERENCE NO. | SHEET NO. | TOTAL SHEETS |
|-----------------|-----------------------------|-------------|--------------|
| N.C. | B-3019 | EC-1 | |
| STATE PROJ. NO. | F.A. PROJ. NO. | DESCRIPTION | |
| | | | |
| | | | |
| | | | |
| | | | |
| | | | |
| | | | |

EROSION AND SEDIMENT CONTROL MEASURES

| Std. # | Description | Symbol |
|---------|--------------------------------------|--------|
| | Streambank Reforestation | |
| 1630.03 | Temporary Silt Ditch | |
| 1630.05 | Temporary Diversion | |
| 1605.01 | Temporary Silt Fence | |
| 1606.01 | Special Sediment Control Fence | |
| 1622.01 | Temporary Berms and Slope Drains | |
| 1630.01 | Riser Basin | |
| 1630.02 | Silt Basin Type B | |
| 1633.01 | Temporary Rock Silt Check Type-A | |
| | Temporary Rock Silt Check Type-B | |
| 1634.01 | Temporary Rock Sediment Dam Type-A | |
| 1634.02 | Temporary Rock Sediment Dam Type-B | |
| 1635.01 | Rock Pipe Inlet Sediment Trap Type-A | |
| 1635.02 | Rock Pipe Inlet Sediment Trap Type-B | |
| 1630.04 | Stilling Basin | |
| | Rock Inlet Sediment Trap: | |
| 1632.01 | Type A | |
| 1632.02 | Type B | |
| 1632.03 | Type C | |
| | Skimmer Basin | |
| | Tiered Skimmer Basin | |
| | Infiltration Basin | |

**THIS PROJECT CONTAINS
 EROSION CONTROL PLANS
 FOR CLEARING AND
 GRUBBING PHASE OF
 CONSTRUCTION.**



ROADSIDE ENVIRONMENTAL UNIT
 DIVISION OF HIGHWAYS
 STATE OF NORTH CAROLINA

Prepared In the Office of:
ROADSIDE ENVIRONMENTAL UNIT
 1 South Wilmington St.
 Raleigh, NC 27611
2006 STANDARD SPECIFICATIONS

Roadway Standard Drawings

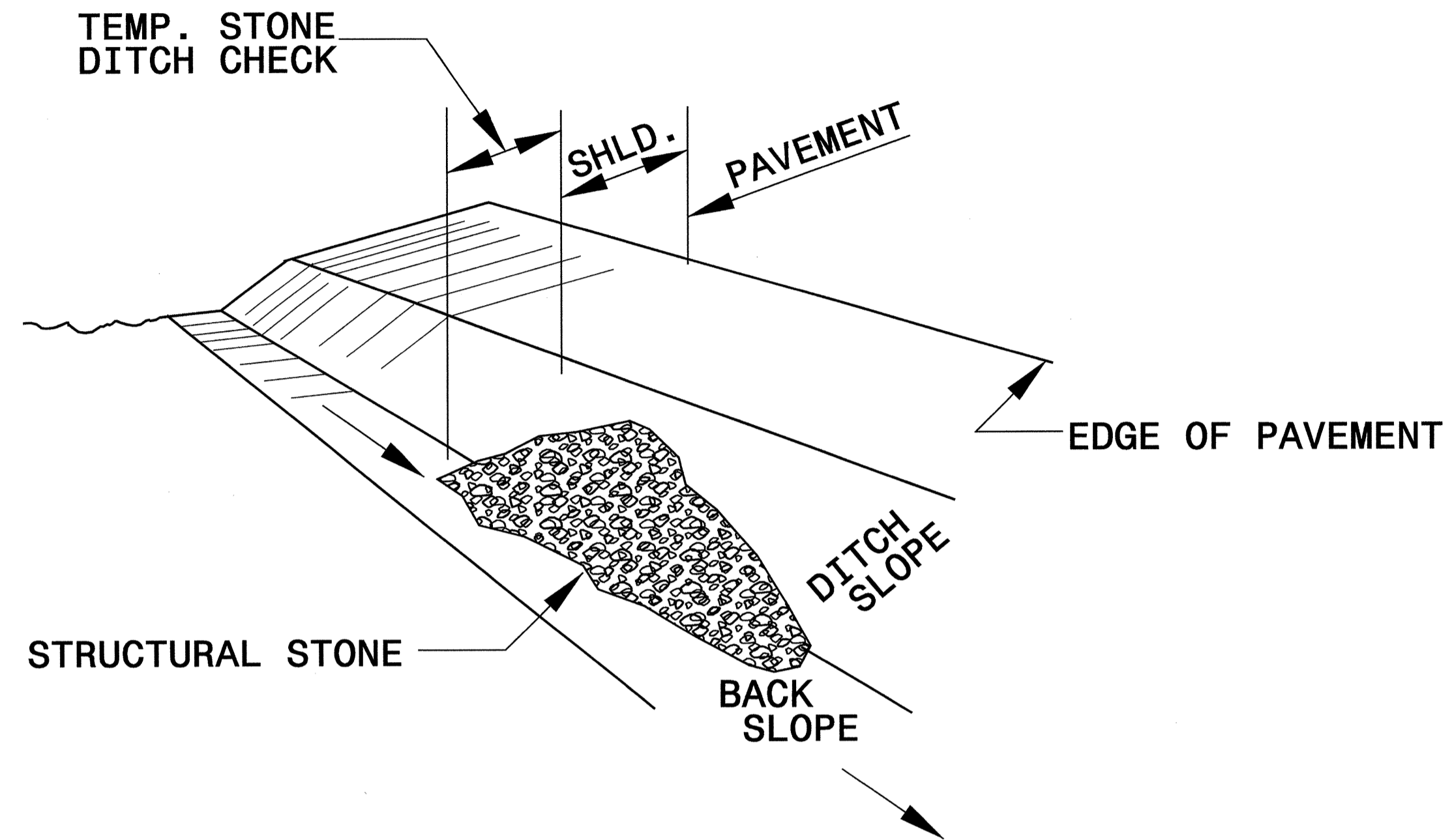
The following roadway english standards as appear in "Roadway Standard Drawings"- Roadway Design Unit - N. C. Department of Transportation - Raleigh, N. C., dated July 18, 2006 and the latest revision thereto are applicable to this project and by reference hereby are considered a part of these plans.

| | |
|--------------------------------------|--|
| 1605.01 Temporary Silt Fence | 1632.03 Rock Inlet Sediment Trap Type C |
| 1607.01 Gravel Construction Entrance | 1633.01 Temporary Rock Silt Check Type A |
| 1630.02 Silt Basin Type B | 1635.02 Rock Pipe Inlet Sediment Trap Type B |
| 1630.05 Temporary Diversion | |

03-DEC-2007 14:29 p:\proj\ec\3019\REN\214546.dgn

| | |
|--|--------------------------|
| PROJECT REFERENCE NO. <i>B-3019</i> | SHEET NO. <i>EC-2</i> |
| RW SHEET NO. | |
| ROADWAY DESIGN ENGINEER | HYDRAULICS ENGINEER |

TEMPORARY ROCK SILT CHECK TYPE 'B' DETAIL

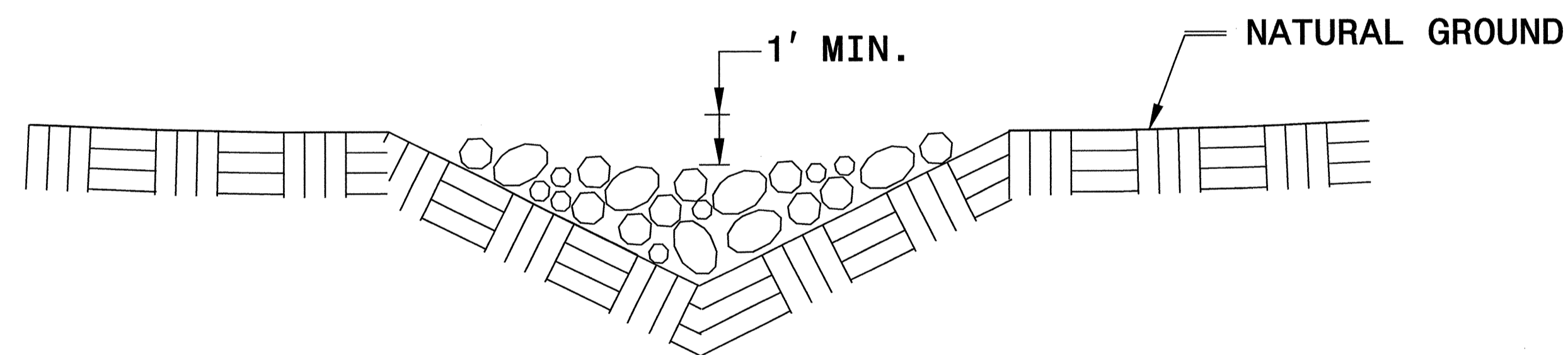


ISOMETRIC VIEW

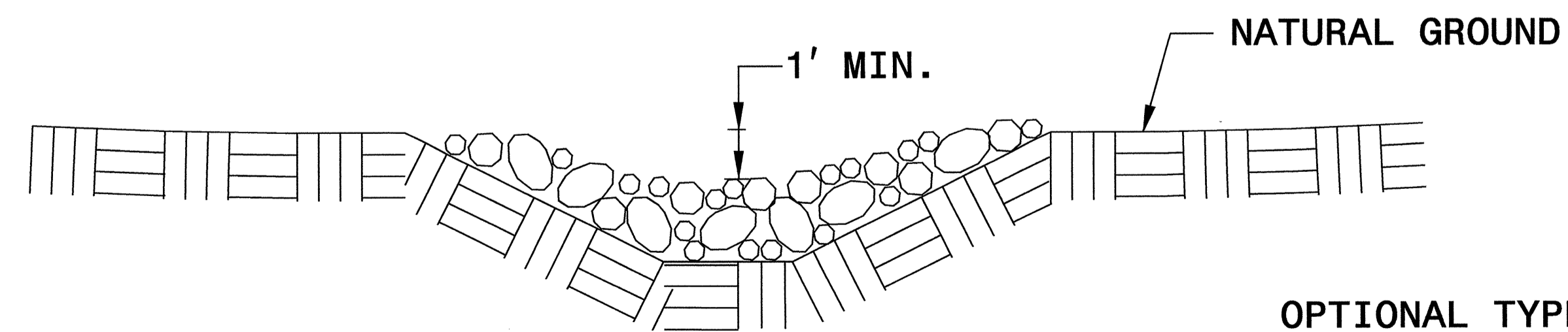
NOTES:

USE CLASS 'B' EROSION CONTROL STONE FOR STRUCTURAL STONE.

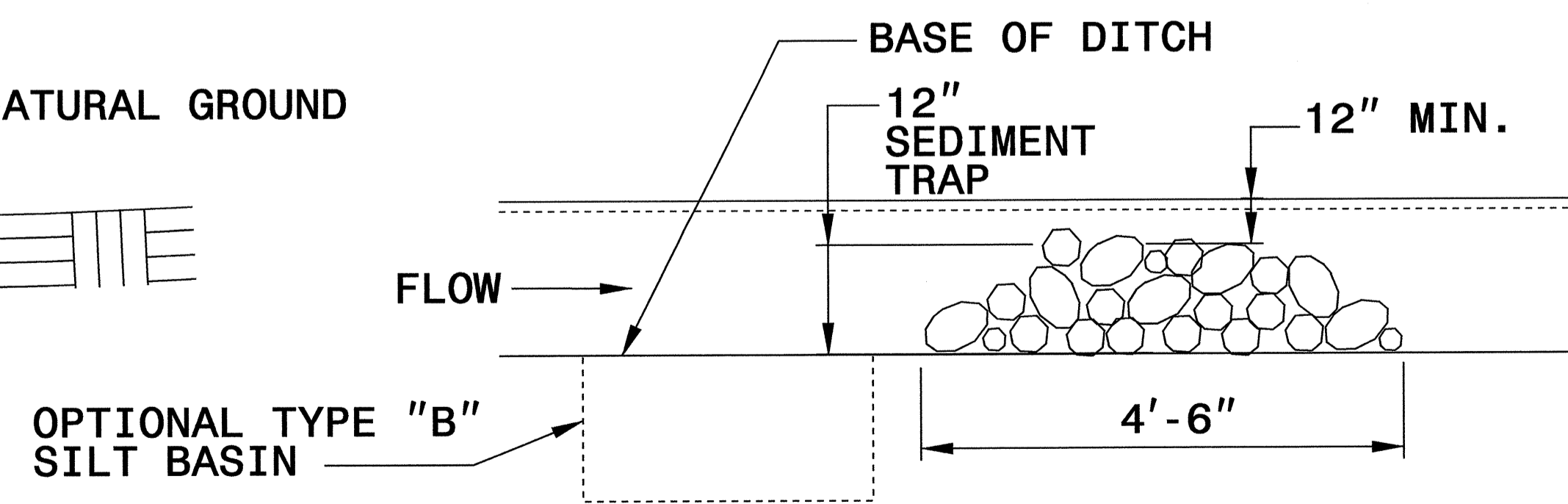
THE ENGINEER MAY DIRECT THE OPTION OF CLASS "A" STONE FOR SITES HAVING LESS THAN ONE (1) ACRE DRAINAGE AREA AND A DITCH GRADE LESS THAN 3%.



CROSS SECTION VEE DITCH



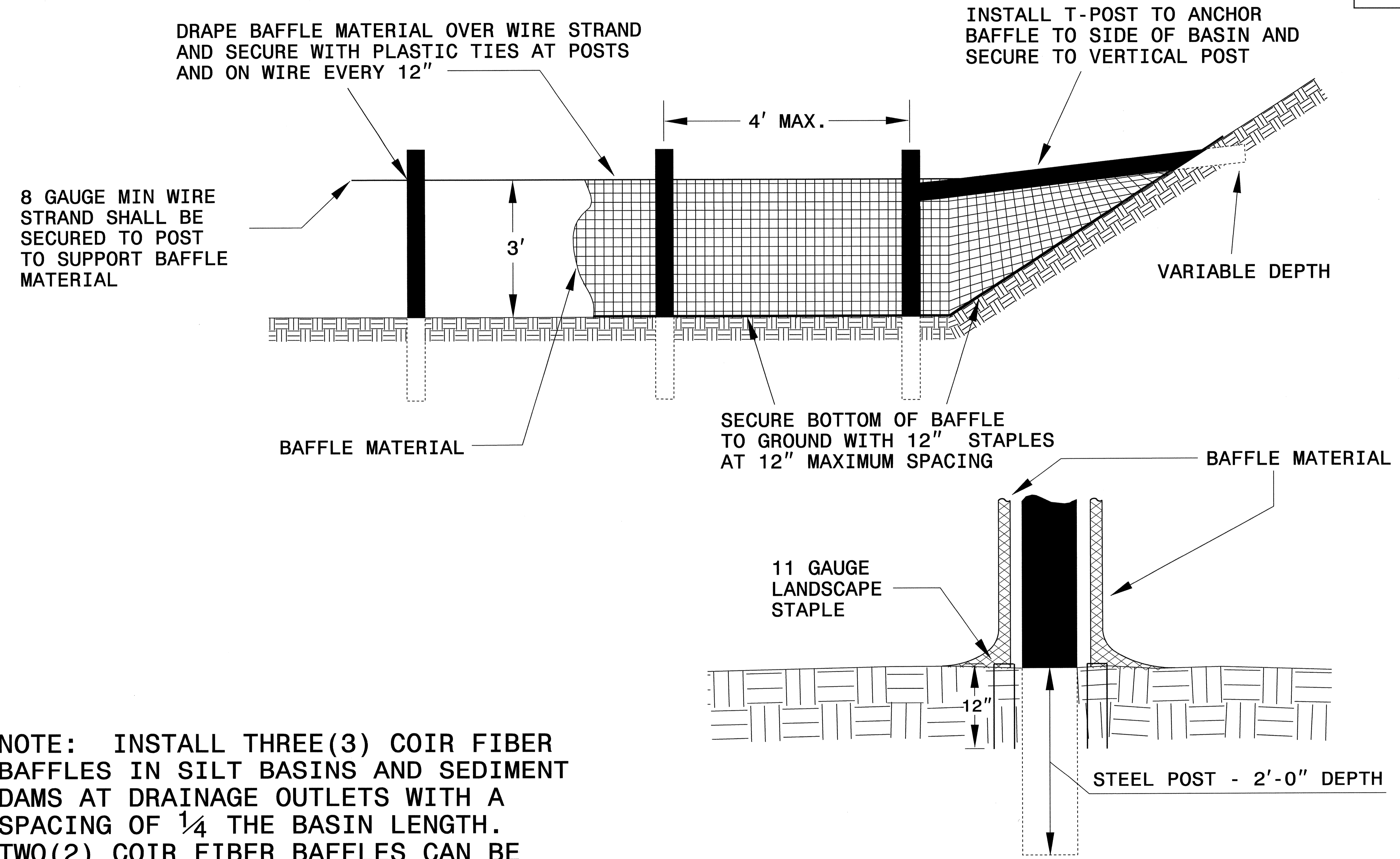
CROSS SECTION TRAPEZOIDAL DITCH



ELEVATION VIEW

| | |
|---------------------------------|---------------------|
| PROJECT REFERENCE NO. B-3019 | SHEET NO. EC-2A |
| RW SHEET NO. | |
| ROADWAY DESIGN ENGINEER | HYDRAULICS ENGINEER |

COIR FIBER BAFFLE DETAIL

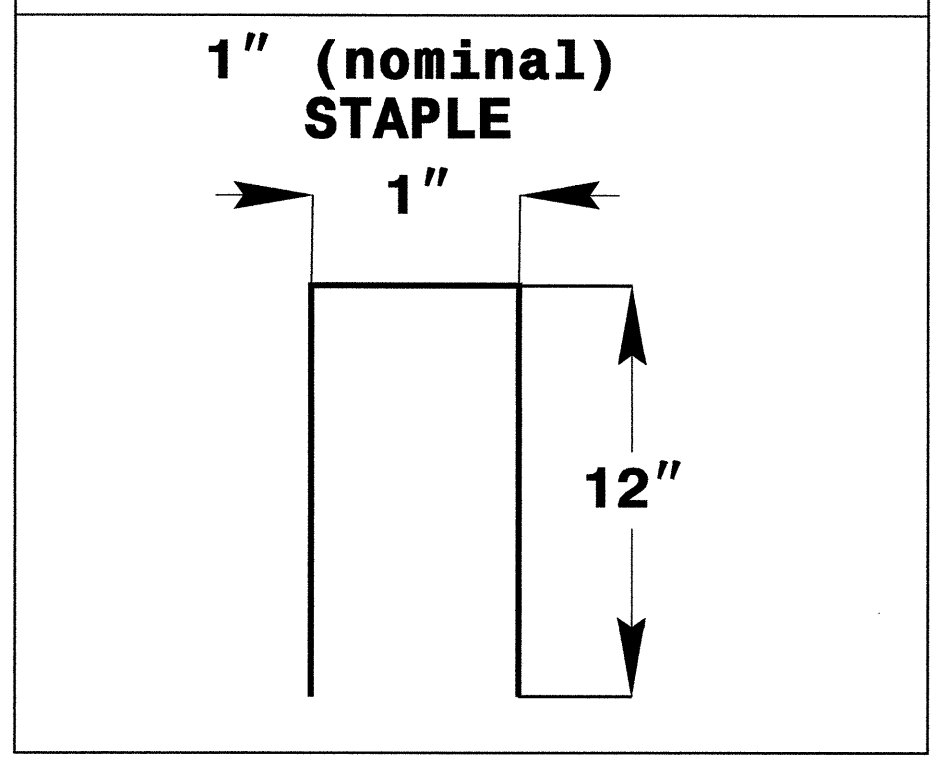
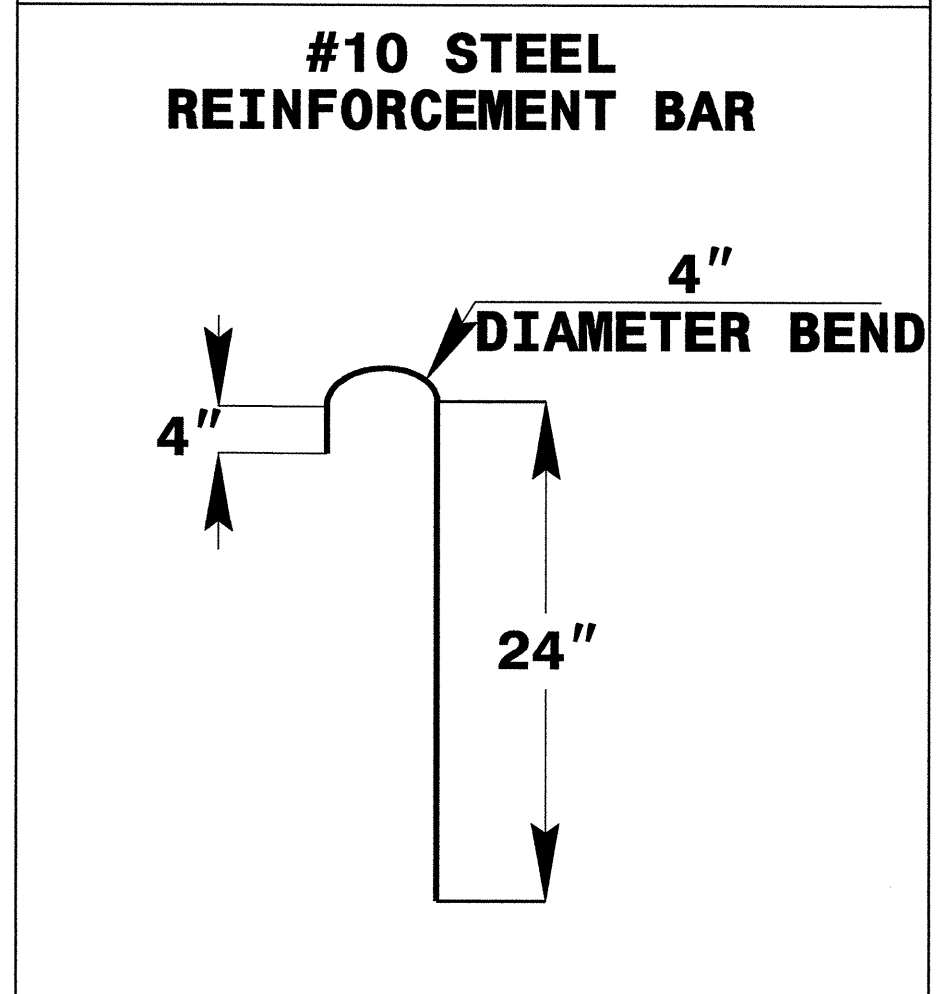
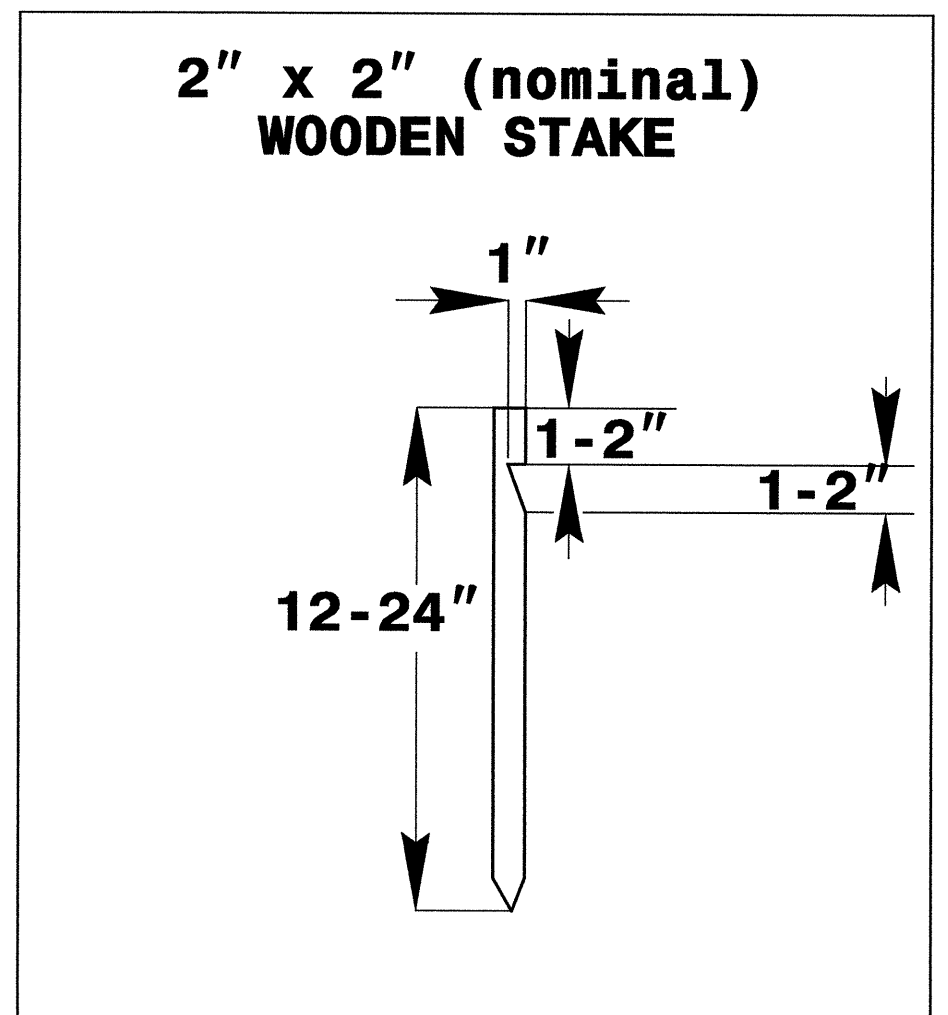
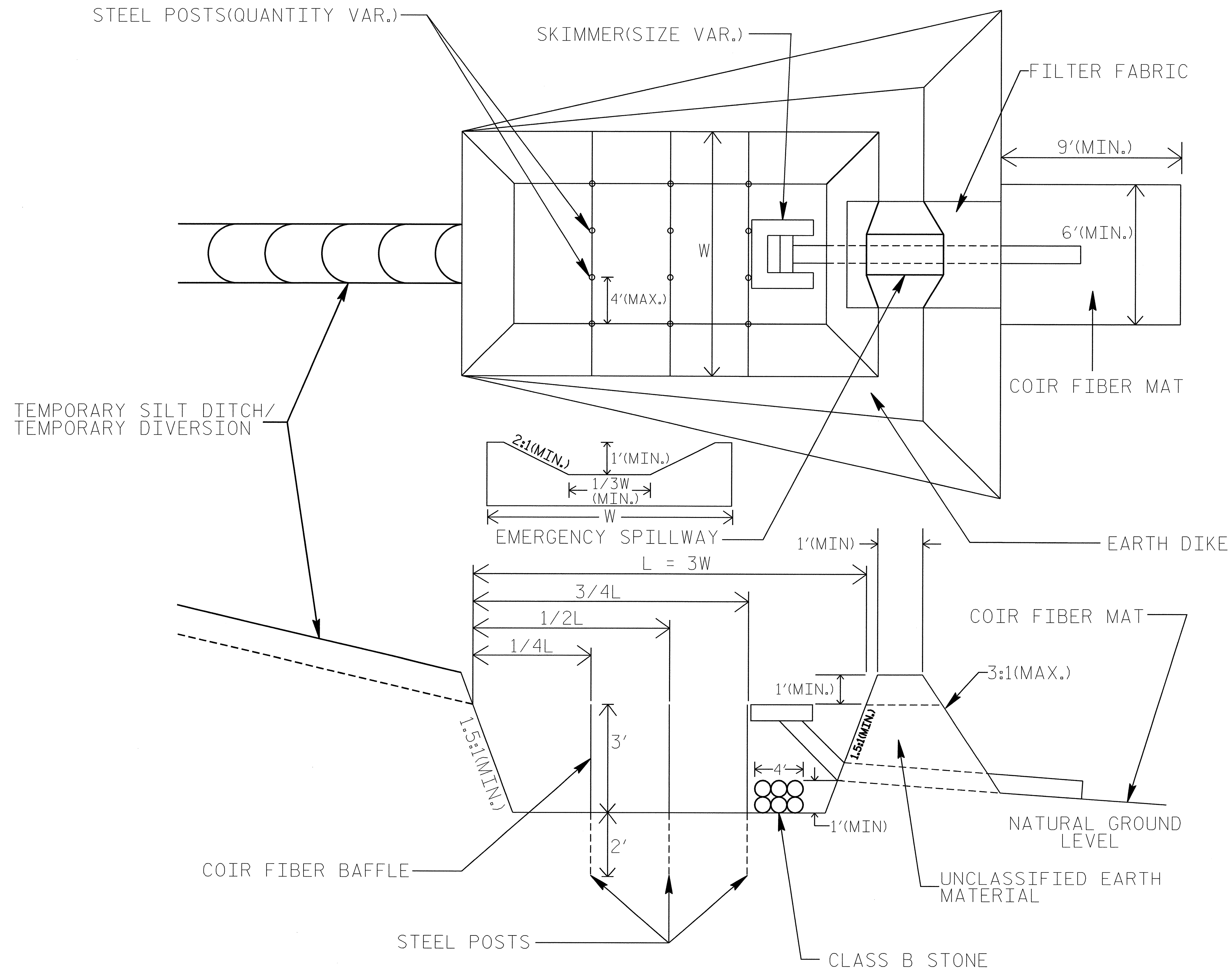


NOTE: INSTALL THREE(3) COIR FIBER BAFFLES IN SILT BASINS AND SEDIMENT DAMS AT DRAINAGE OUTLETS WITH A SPACING OF $\frac{1}{4}$ THE BASIN LENGTH. TWO(2) COIR FIBER BAFFLES CAN BE INSTALLED IN SILT BASINS AND DAMS LESS THAN 20 FT. IN LENGTH WITH A SPACING OF $\frac{1}{3}$ THE BASIN LENGTH.

BAFFLE MATERIAL SHALL BE SECURED TO THE BOTTOM AND SIDES OF BASIN USING 12" LANDSCAPE STAPLES

SKIMMER BASIN WITH BAFFLES DETAIL

| | |
|---------------------------------|---------------------|
| PROJECT REFERENCE NO. B-3019 | SHEET NO. EC-2B |
| RW SHEET NO. | |
| ROADWAY DESIGN ENGINEER | HYDRAULICS ENGINEER |

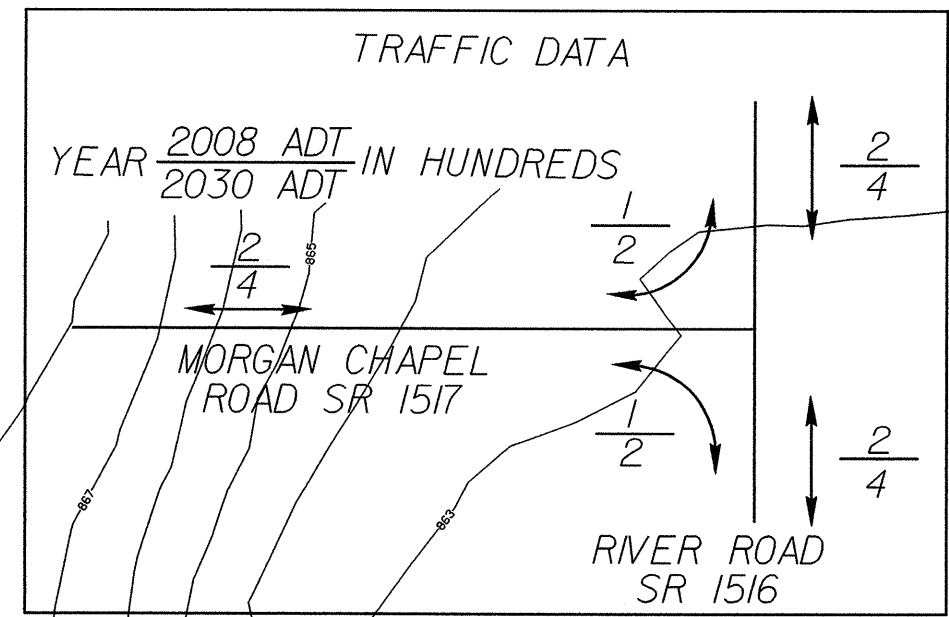


COIR FIBER MAT ANCHOR OPTIONS

- NOTES:**
1. SEED AND PLACE MATTING FOR EROSION CONTROL ON SIDESLOPES.
 2. LIMIT EARTH DIKE HEIGHT TO 5 FT.

CLEARING AND GRUBBING
EROSION CONTROL FOR
CONSTRUCTION SHEET 4

NOTE:
PLACE TEMPORARY ROCK SEDIMENT DAMS TYPE - B
AND TEMPORARY ROCK SILT CHECKS TYPE - A AT
DRAINAGE OUTLETS.

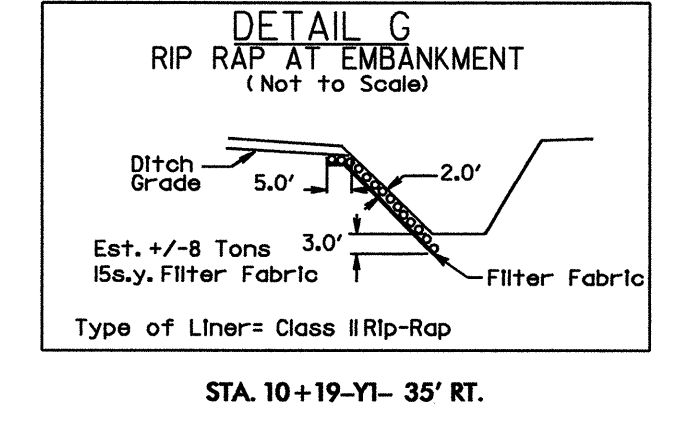
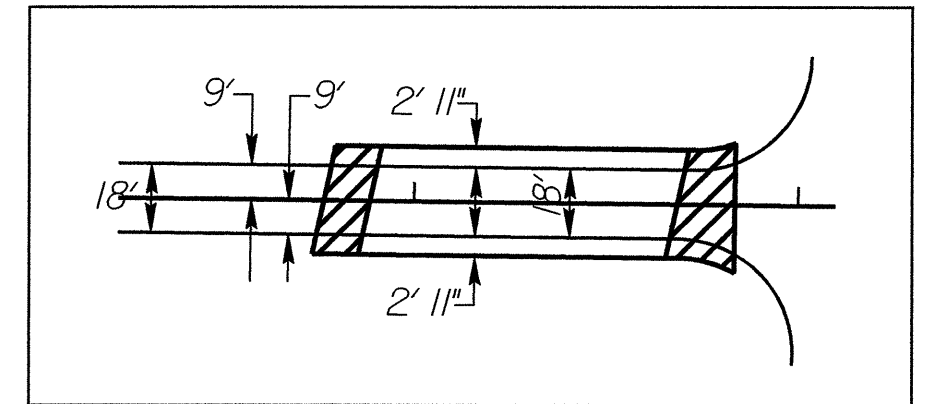
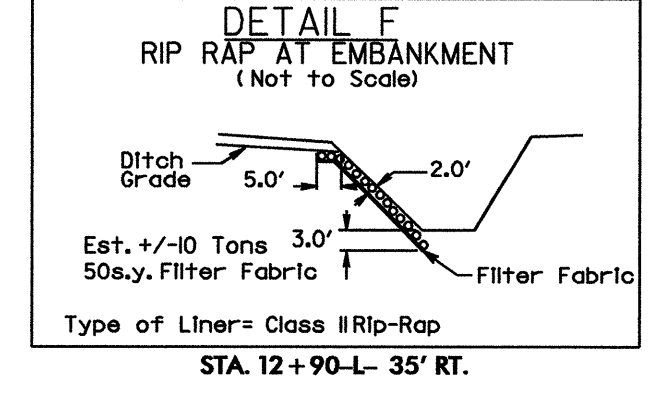
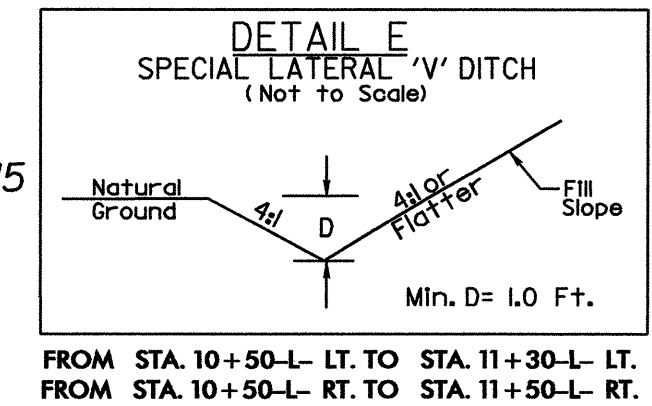
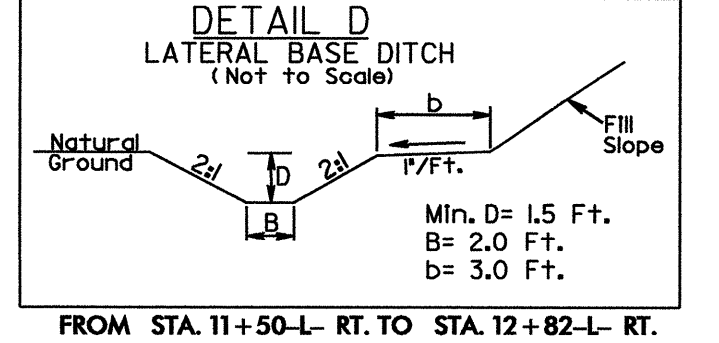
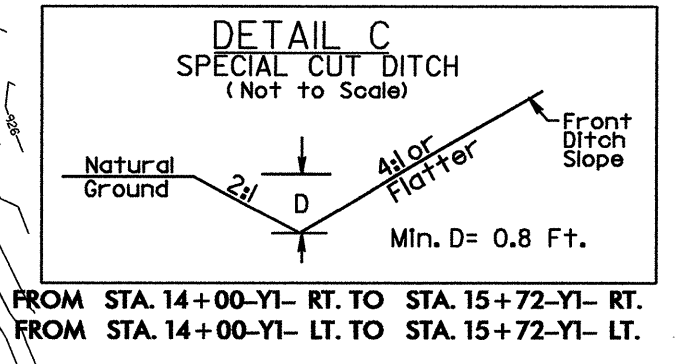
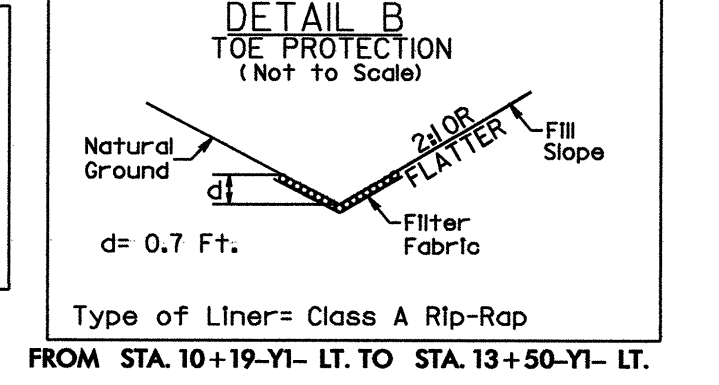
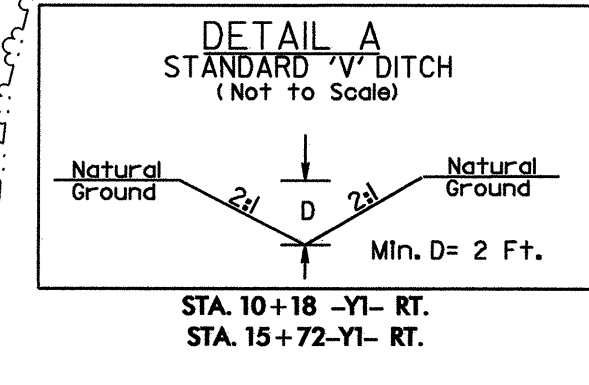
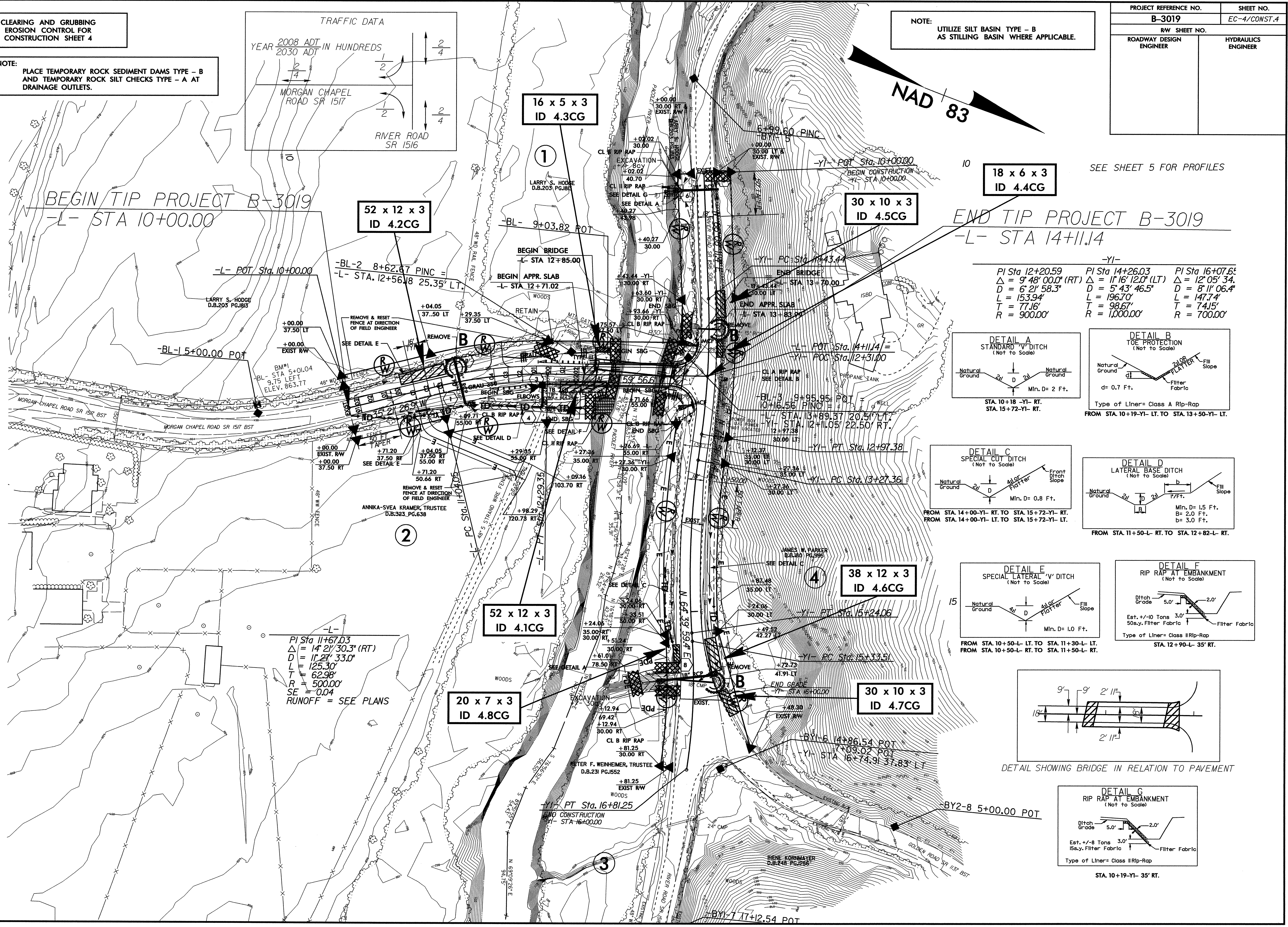


NOTE:
UTILIZE SILT BASIN TYPE - B
AS STILLING BASIN WHERE APPLICABLE.

| | |
|--|---------------------------|
| PROJECT REFERENCE NO. B-3019 | SHEET NO. EC-4/CONST.4 |
| RW SHEET NO. | |
| ROADWAY DESIGN ENGINEER | HYDRAULICS ENGINEER |

BEGIN TIP PROJECT B-3019
-L- STA 10+00.00

END TIP PROJECT B-3019
-L- STA 14+11.14

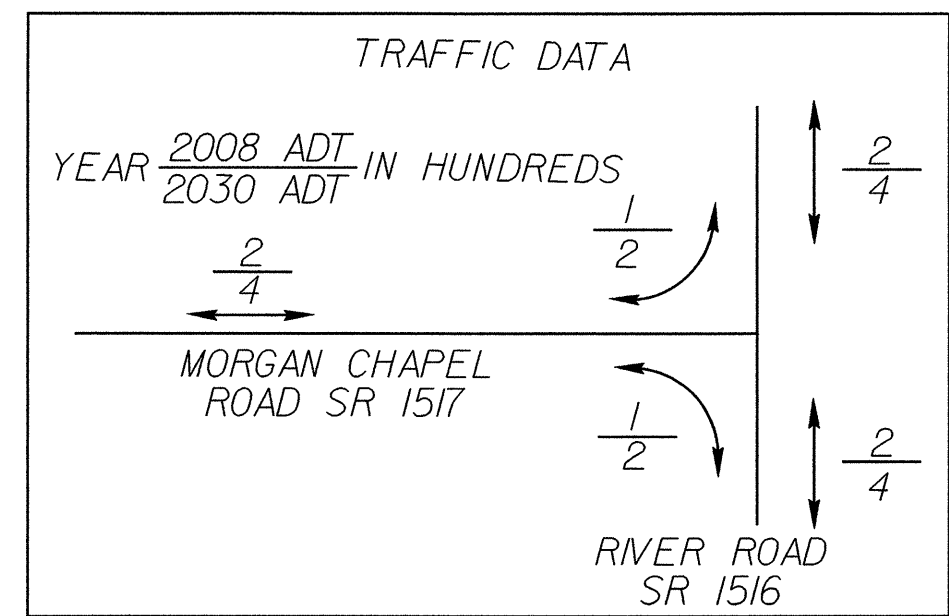


03-DEC-2007 14:46
 g:\projects\ec\3019\environmental\design\B-3019_ec_psh4.dgn
 11/14/07 11:44:16

| | |
|-------------------------|---------------------|
| PROJECT REFERENCE NO. | SHEET NO. |
| B-3019 | EC-5/CONST.4 |
| RW SHEET NO. | |
| ROADWAY DESIGN ENGINEER | HYDRAULICS ENGINEER |

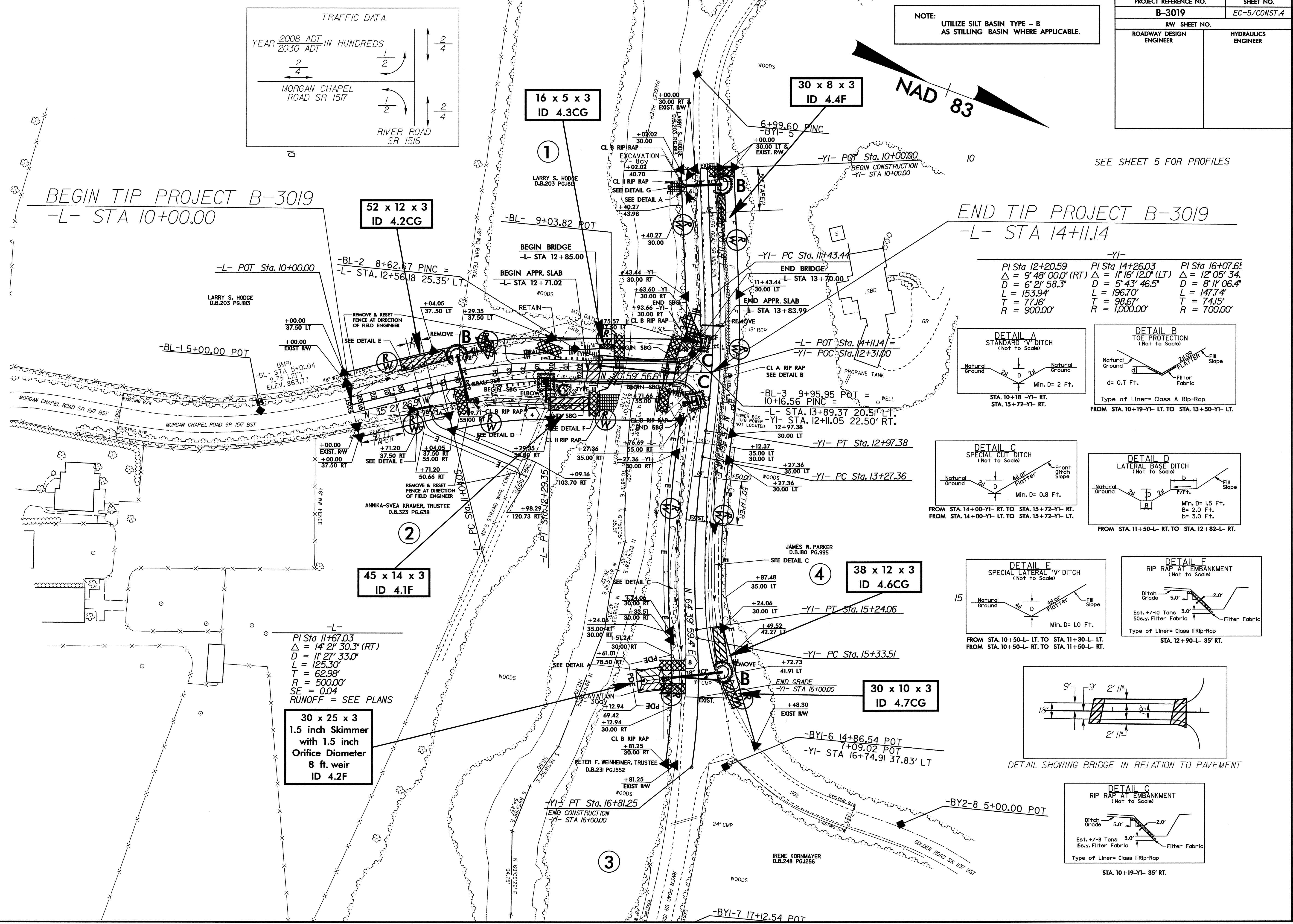
NOTE: UTILIZE SILT BASIN TYPE - B AS STILLING BASIN WHERE APPLICABLE.

SEE SHEET 5 FOR PROFILES

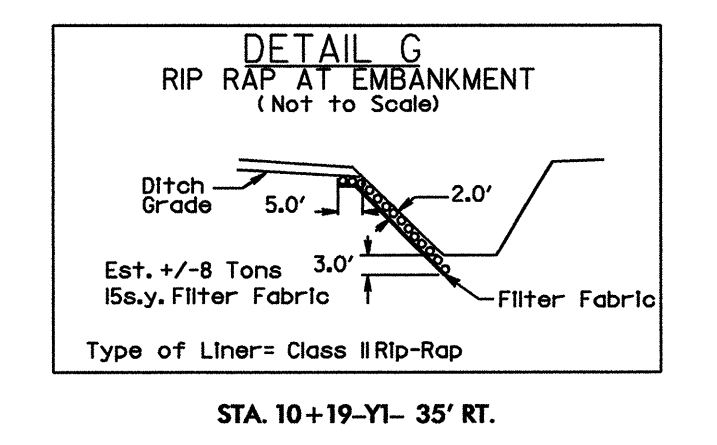
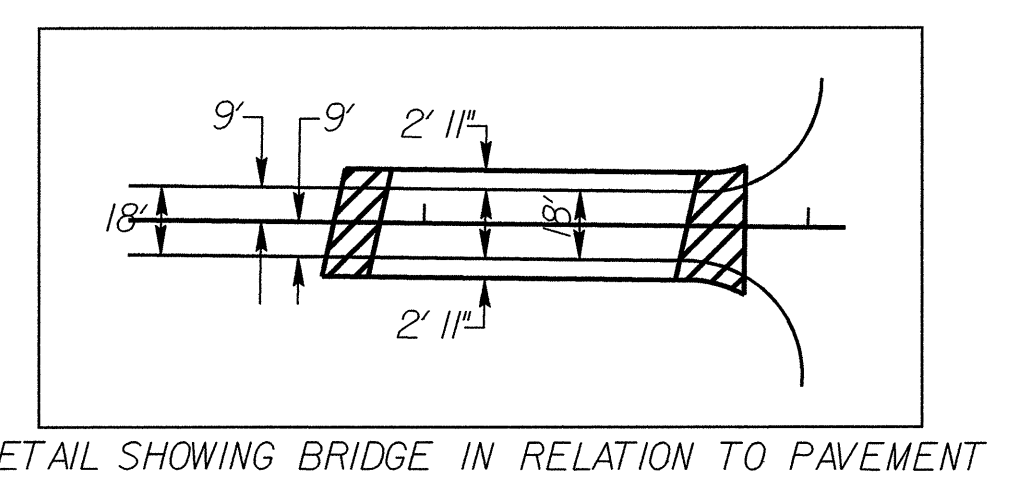
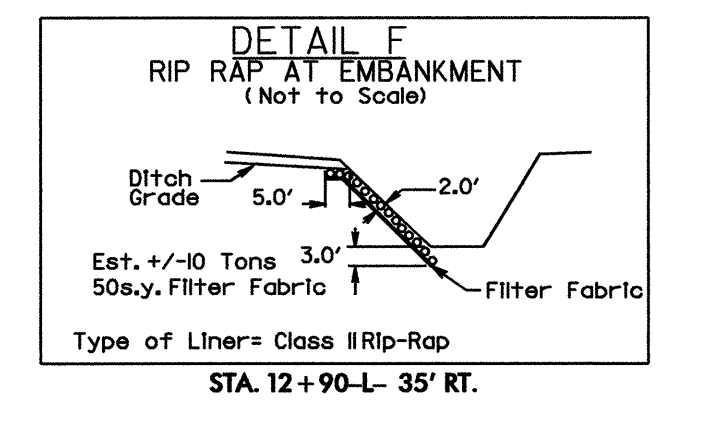
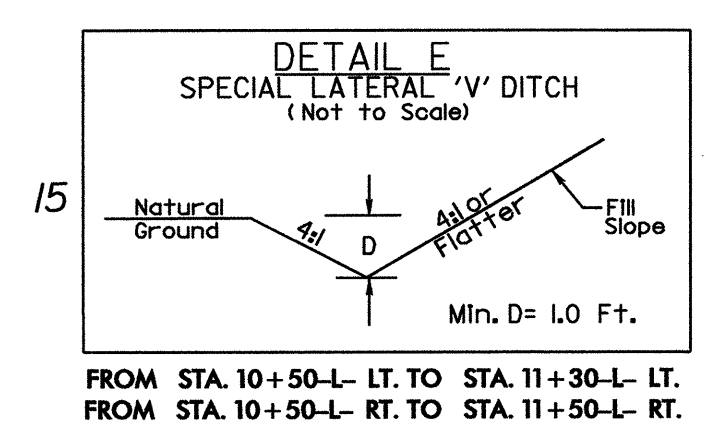
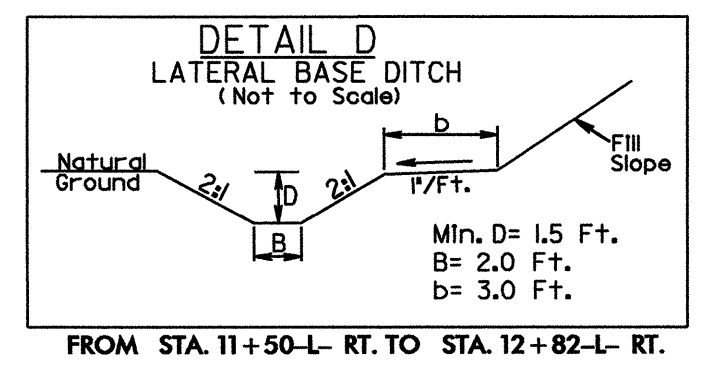
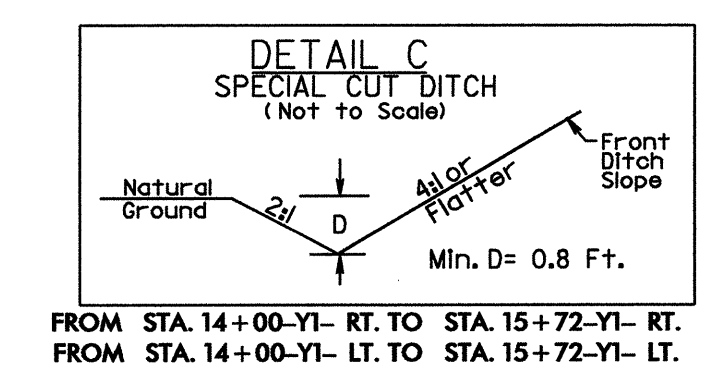
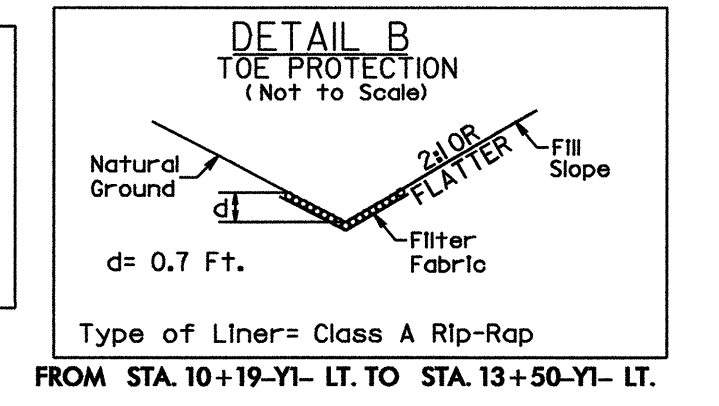
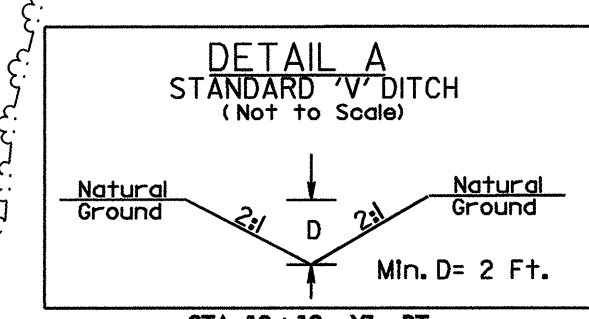


BEGIN TIP PROJECT B-3019
-L- STA 10+00.00

END TIP PROJECT B-3019
-L- STA 14+11.4



| | | |
|--|---|--|
| PI Sta 12+20.59 Δ = 9' 48" 00.0" (RT) D = 6' 21" 58.3" L = 153.94' T = 77.16' R = 900.00' | PI Sta 14+26.03 Δ = 11' 16" 12.0" (LT) D = 5' 43" 46.5" L = 196.70' T = 98.67' R = 1,000.00' | PI Sta 16+07.61 Δ = 12' 05" 34. D = 8' 11" 06.4" L = 147.74' T = 74.15' R = 700.00' |
|--|---|--|



03-DEC-2007 14:47
g:\projects\ec-5\environmental\design\b-3019-ec-psrh4.dgn
BENNY214546