

09/08/99

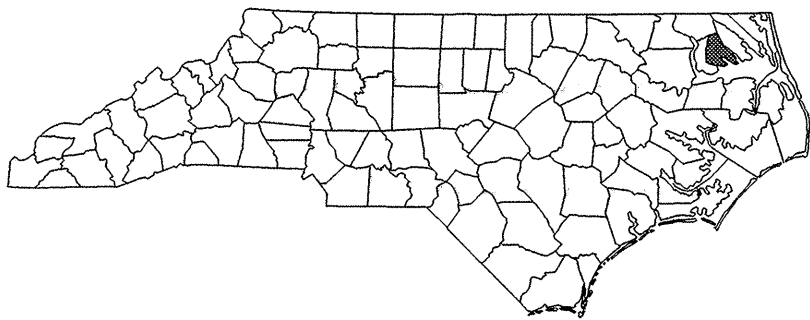
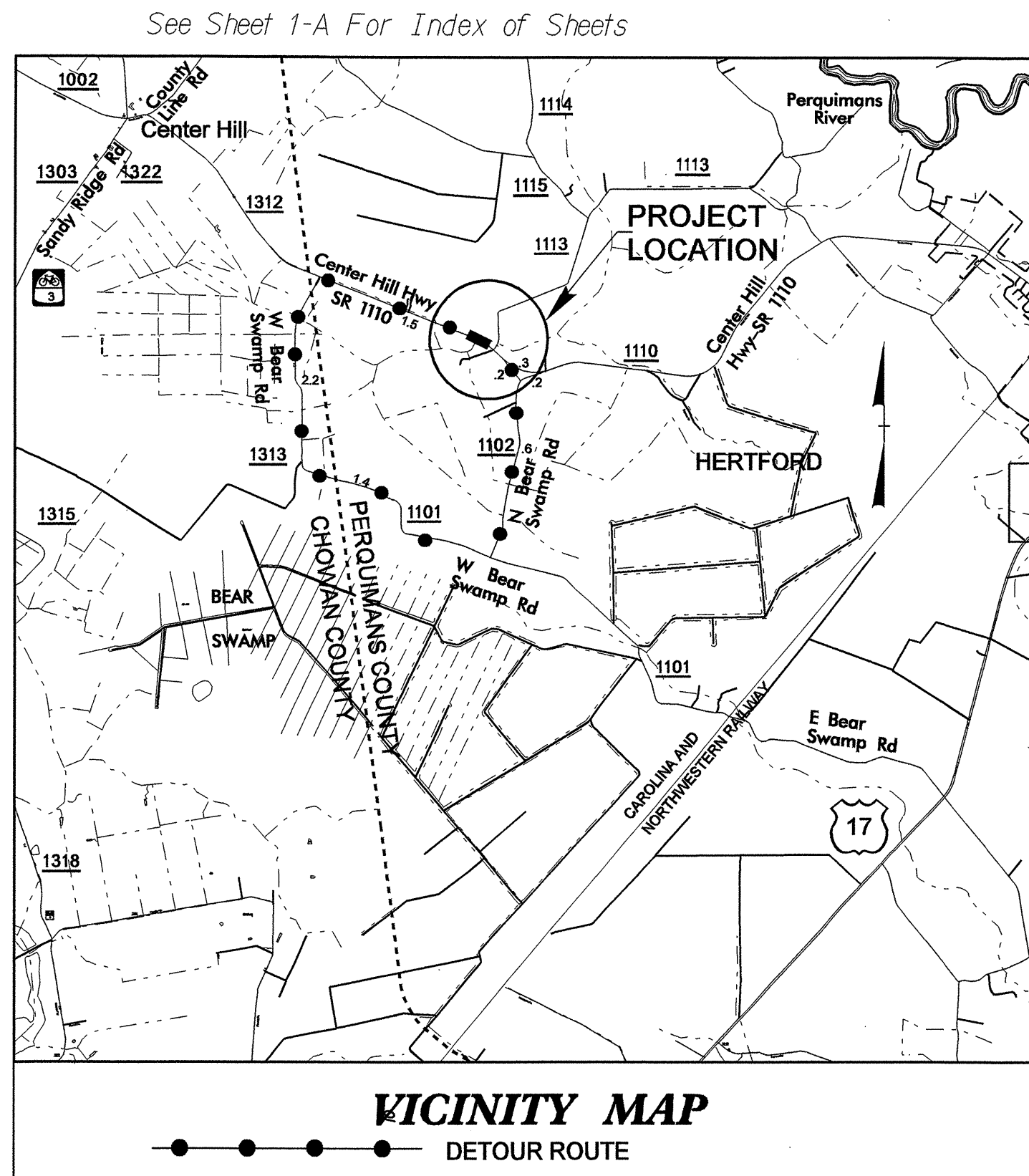
T.I.P. NO.	SHEET NO.
B-4226	UC-1

STATE OF NORTH CAROLINA  
DIVISION OF HIGHWAYS

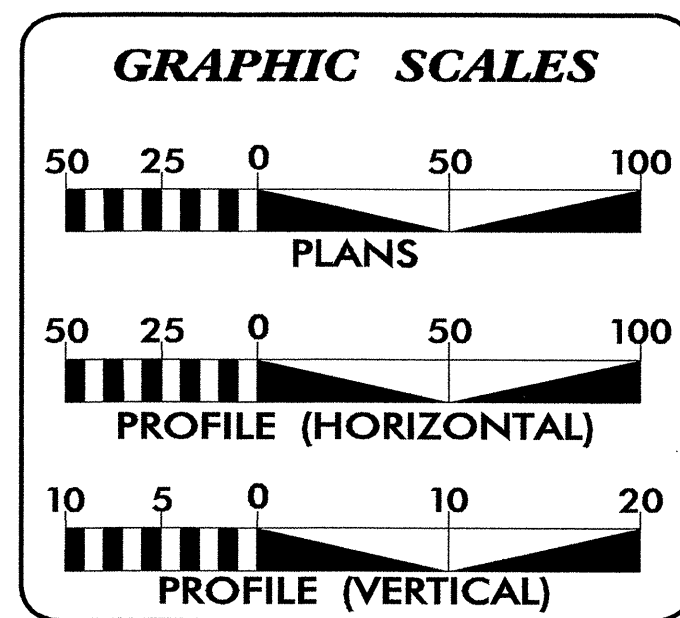
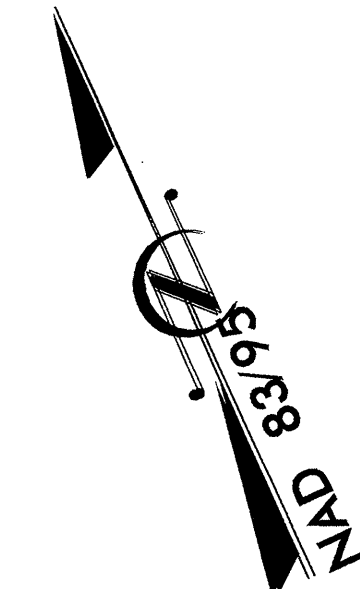
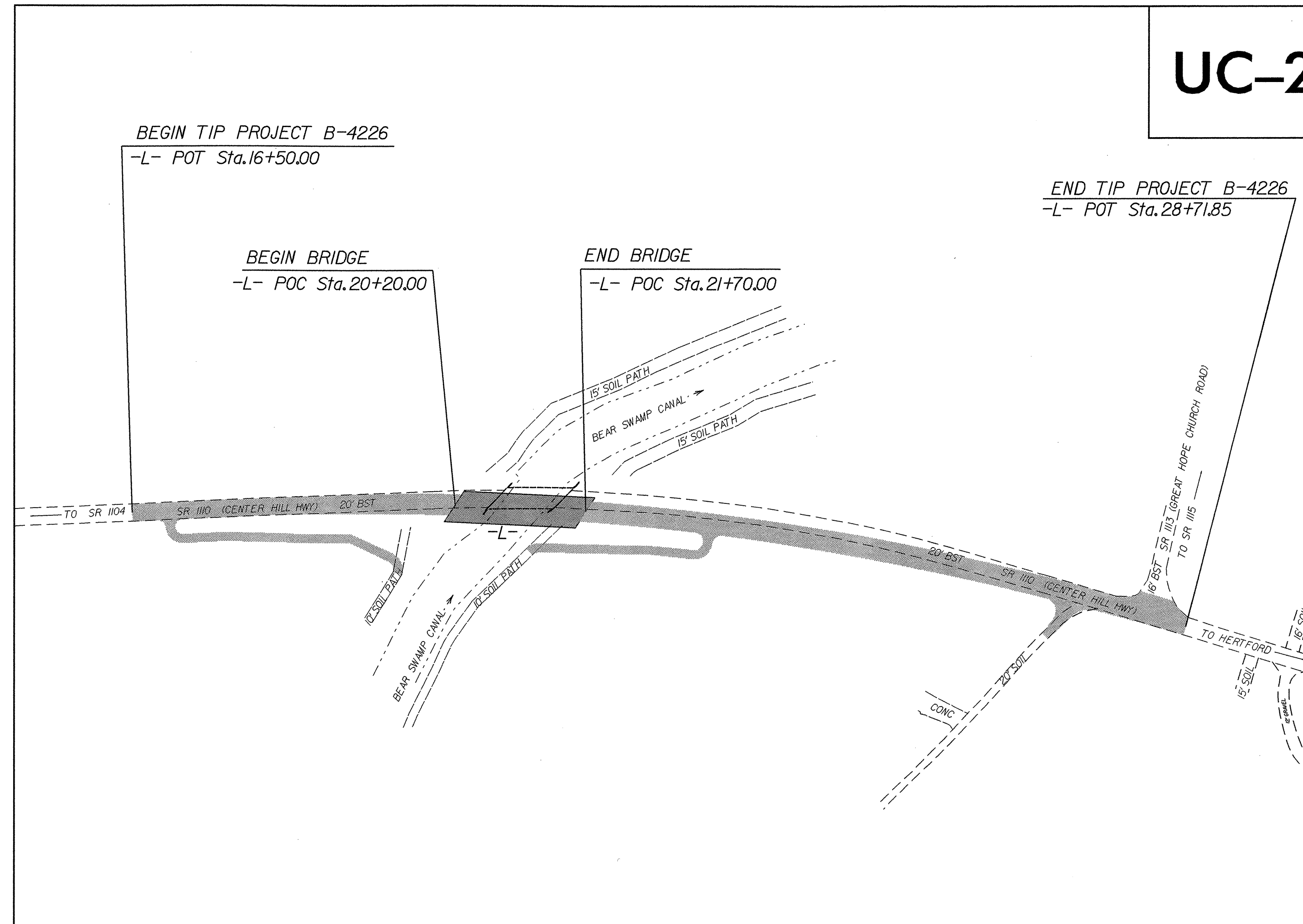
**UTILITY CONSTRUCTION PLANS  
PERQUIMANS COUNTY**

**LOCATION: BRIDGE 62 OVER BEAR SWAMP CANAL ON SR 1110  
TYPE OF WORK: 6" WATER LINE RELOCATION**

**TIP PROJECT: B-4226**

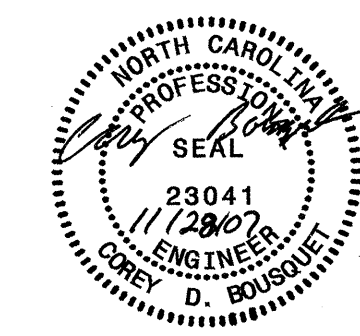


THE EXISTING UTILITIES BELONG TO PERQUIMANS COUNTY WATER SYSTEM. THE CONTRACTOR SHALL PROVIDE ACCESS TO THE OWNER'S REPRESENTATIVES FOR ALL PHASES OF THE WATER LINE CONSTRUCTION. THE CONTRACTOR SHALL NOTIFY THE OWNER TWO WEEKS BEFORE COMMENCEMENT OF ANY WORK AND ONE WEEK BEFORE SERVICE INTERRUPTIONS.



INDEX OF SHEETS	
SHEET NO.	DESCRIPTION
UC-1	TITLE SHEET
UC-2	UTILITY CONSTRUCTION PLAN SHEET
UC-3	PROFILE SHEET
UC-4	DETAILS SHEET

WATER AND SEWER OWNERS ON PROJECT	
(1)	PERQUIMANS COUNTY WATER SYSTEM



PREPARED IN THE OFFICE OF:  
**DIVISION OF HIGHWAYS  
PROJECT SERVICES  
UTILITY SECTION**

1591 MAIL SERVICES CENTER  
RALEIGH NC 27699-1591  
PHONE (919) 250-4128  
FAX (919) 250-4119

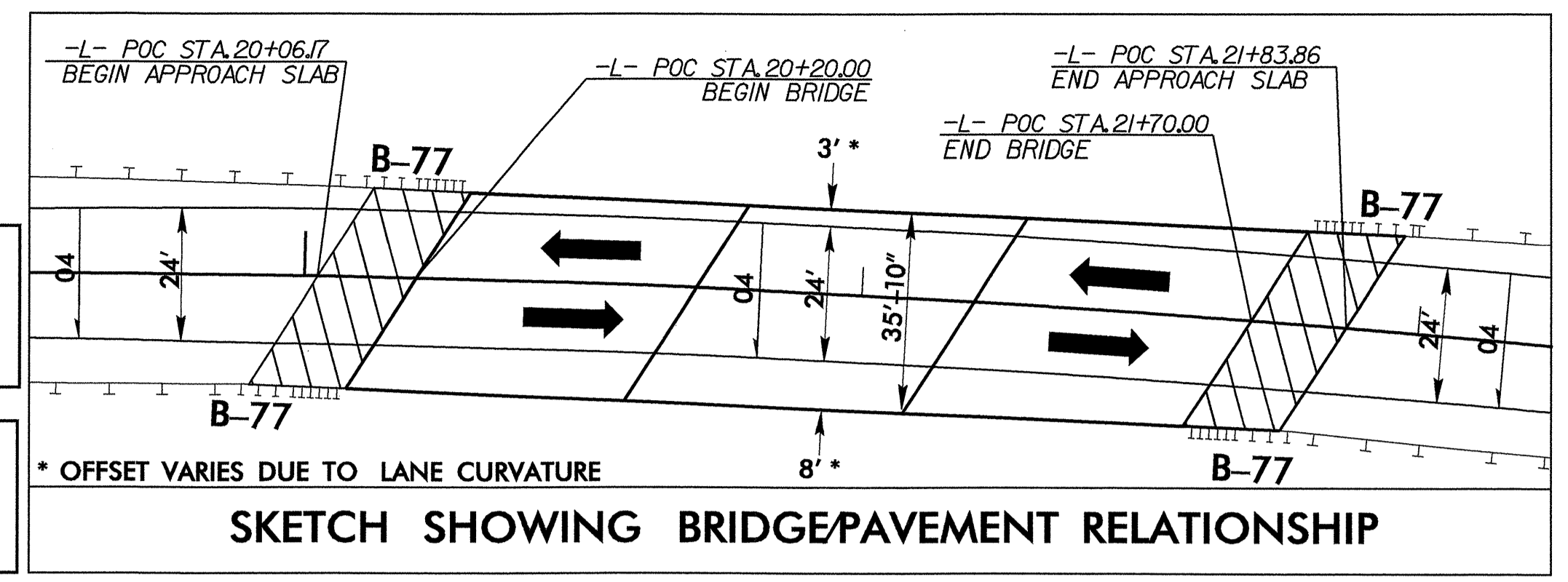
**Roger Worthington, P.E.** UTILITIES SECTION ENGINEER  
**Corey Bousquet, P.E.** UTILITIES SQUAD LEADER PROJECT ENGINEER  
**Bo Hemphill, P.E.** UTILITIES PROJECT DESIGNER

28-NOV-2007 10:19  
F:\utilities\rdv\ut\proj\B4226-ut\_uc.tsh.dgn  
\$\$\$\$\$USERNAME\$\$\$\$\$

**UTILITY CONSTRUCTION**

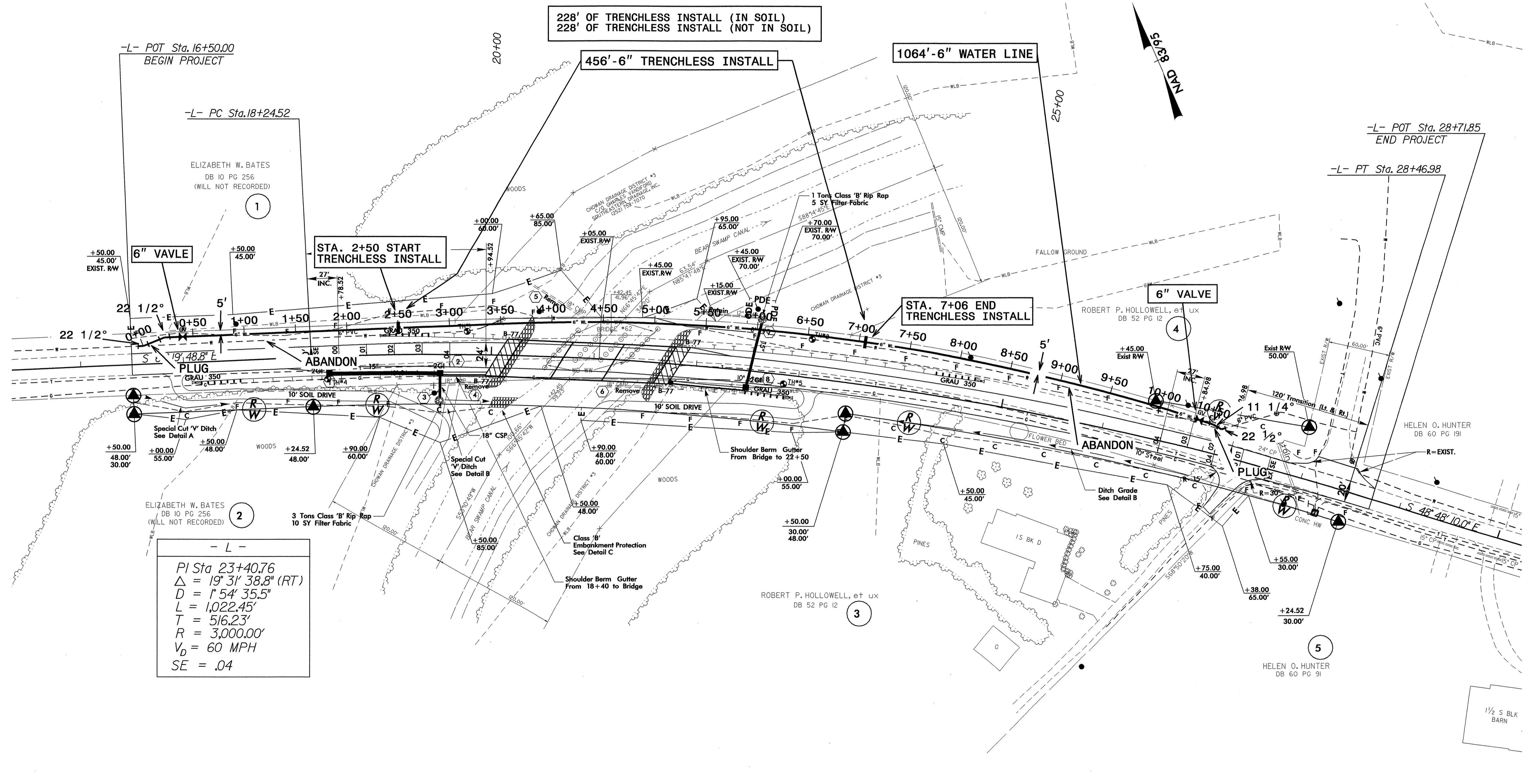
**PERQUIMANS COUNTY WATER SYSTEM OWNS THE 6" WATER LINE**

**CONNECT ALL WATER LINES USING NECESSARY FITTINGS**



\* OFFSET VARIES DUE TO LANE CURVATURE

**SKETCH SHOWING BRIDGE/PAVEMENT RELATIONSHIP**



- L -

PI Sta 23+40.76  
 $\Delta = 19^\circ 31' 38.8" (RT)$   
 $D = 1^\circ 54' 35.5"$   
 $L = 1,022.45'$   
 $T = 516.23'$   
 $R = 3,000.00'$   
 $V_D = 60 \text{ MPH}$   
 $SE = .04$

-SEE SHEET 5 FOR -L- PROFILE.

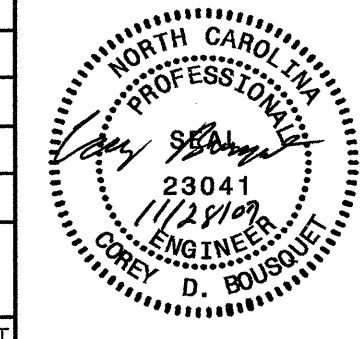
-SEE SHEETS S-1 THRU S-24 FOR STRUCTURE PLAN.

5/14/99

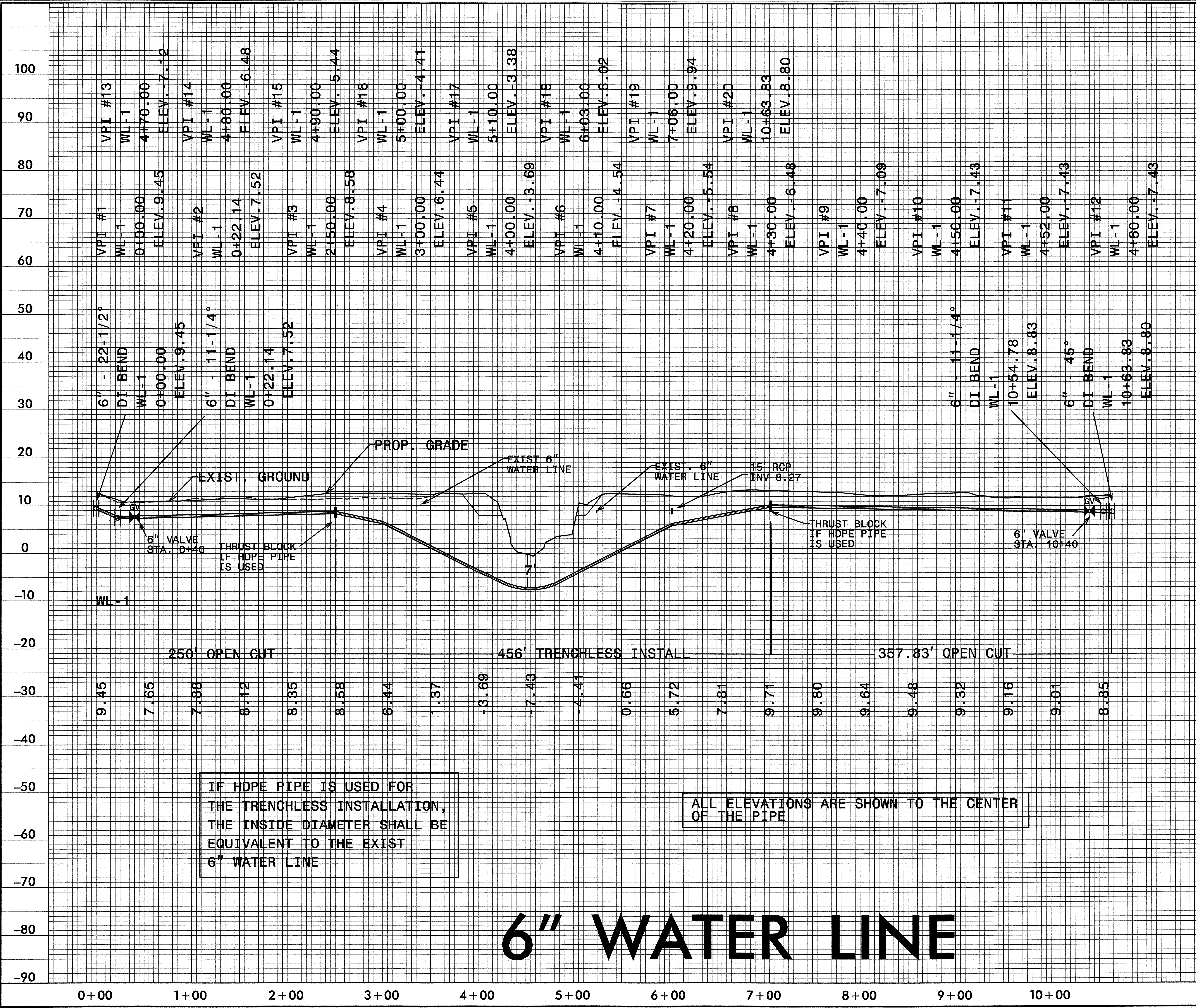
28-NOV-2007 10:18

r:\utilities\pco\pco\pco\b4226-ut\_rdy4-uc2.dgn

5/14/99  
 28-NOV-2007 10:48  
 r:\utility\thes\vol\ut\proj\b4226-ut.upr2.dgn

PROJECT REFERENCE NO.	SHEET NO.
B-4226	UC-3
DESIGNED BY: CDB	
DRAWN BY: CDB	
CHECKED BY: CDB	
APPROVED BY: CDB	
REVISED:	
NORTH CAROLINA DEPARTMENT OF TRANSPORTATION PROJECT SERVICES UNIT PHONE: (919)250-4128 FAX: (919)250-4119	
UTILITY CONSTRUCTION PLANS ONLY	

UTILITY CONSTRUCTION

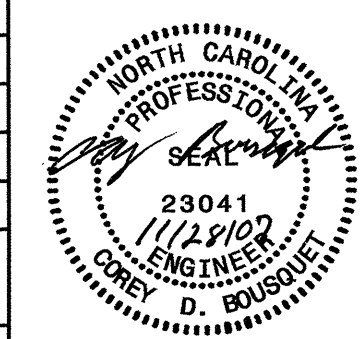


IF HDPE PIPE IS USED FOR THE TRENCHLESS INSTALLATION, THE INSIDE DIAMETER SHALL BE EQUIVALENT TO THE EXIST 6" WATER LINE

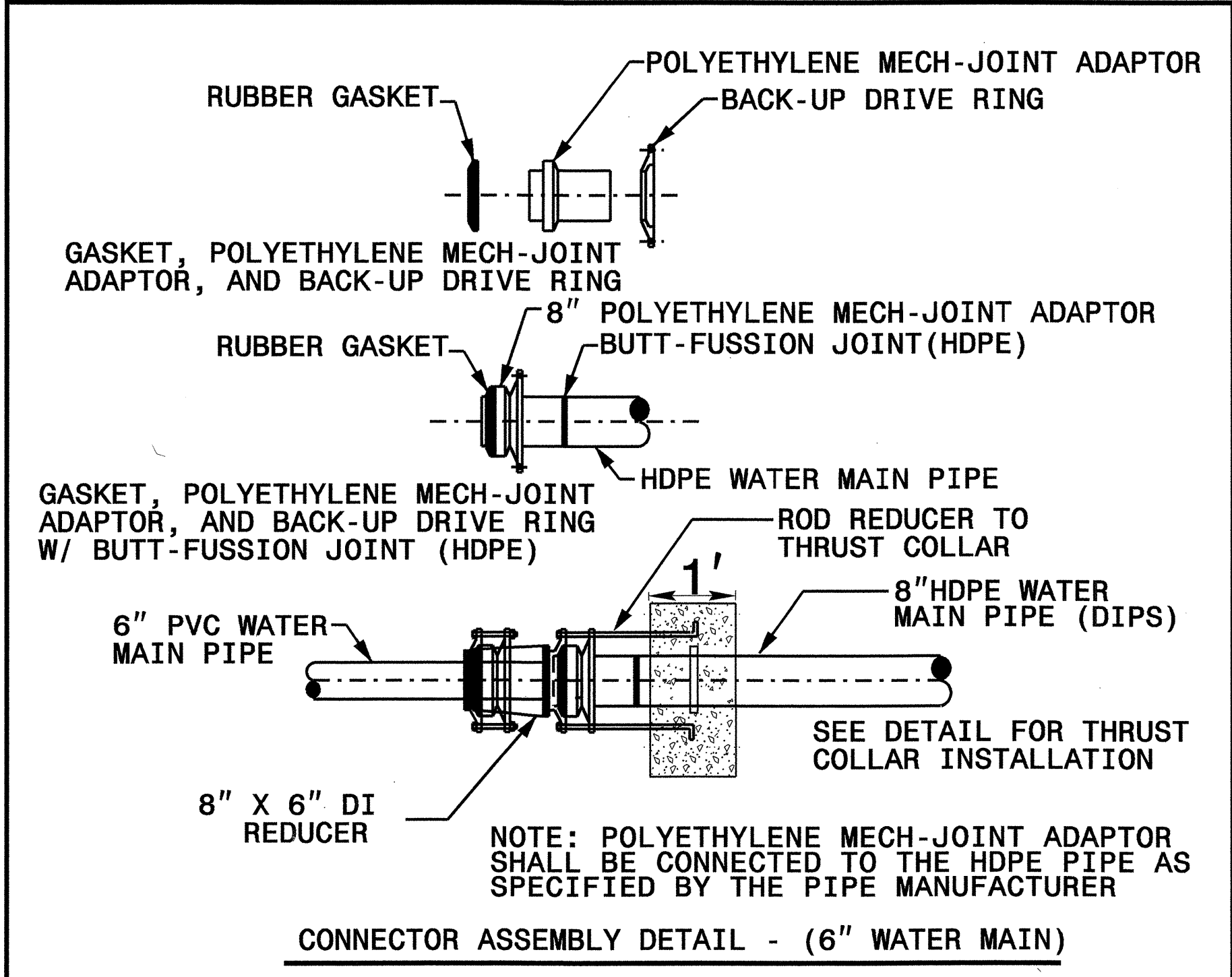
ALL ELEVATIONS ARE SHOWN TO THE CENTER OF THE PIPE

# 6" WATER LINE

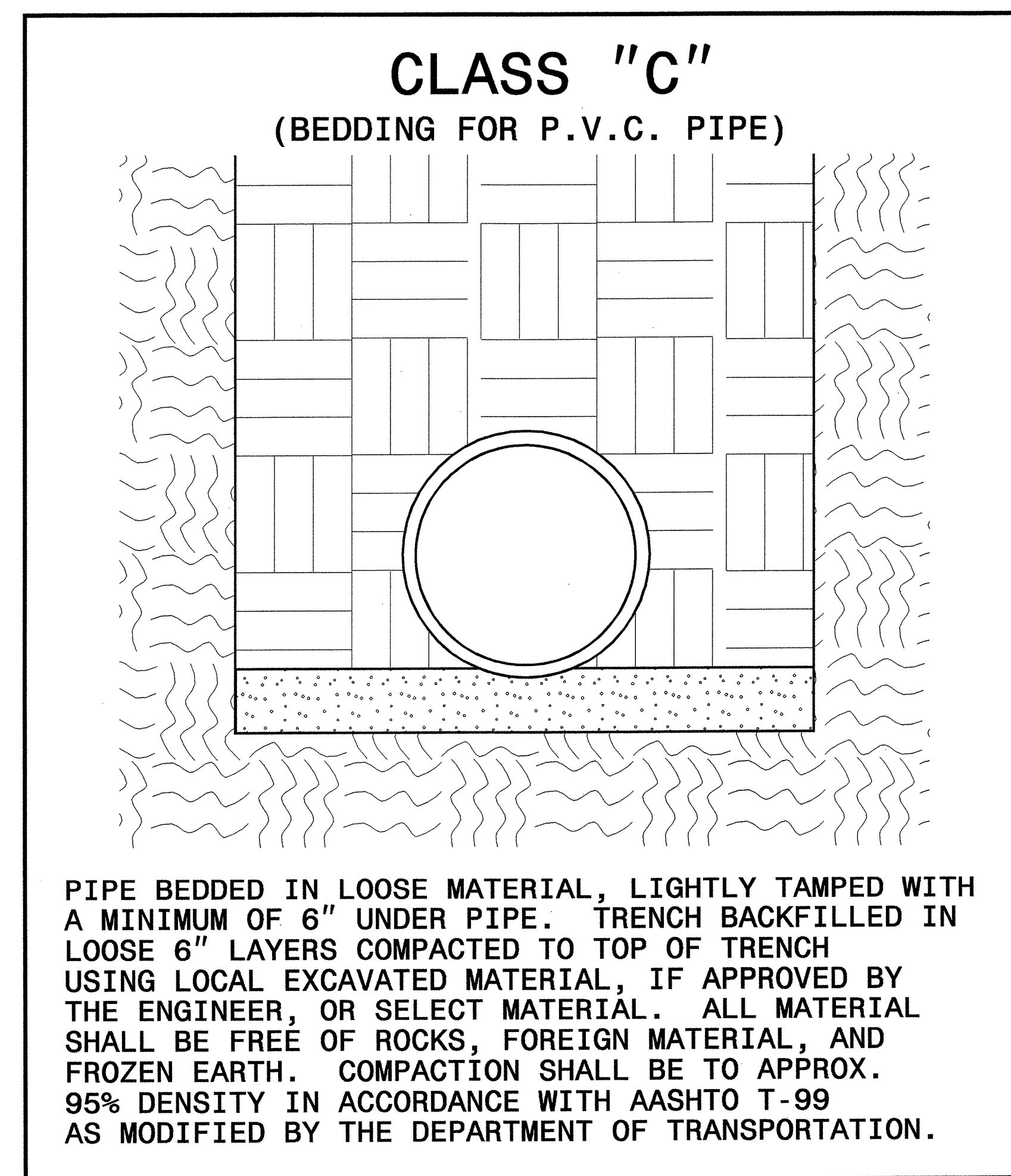
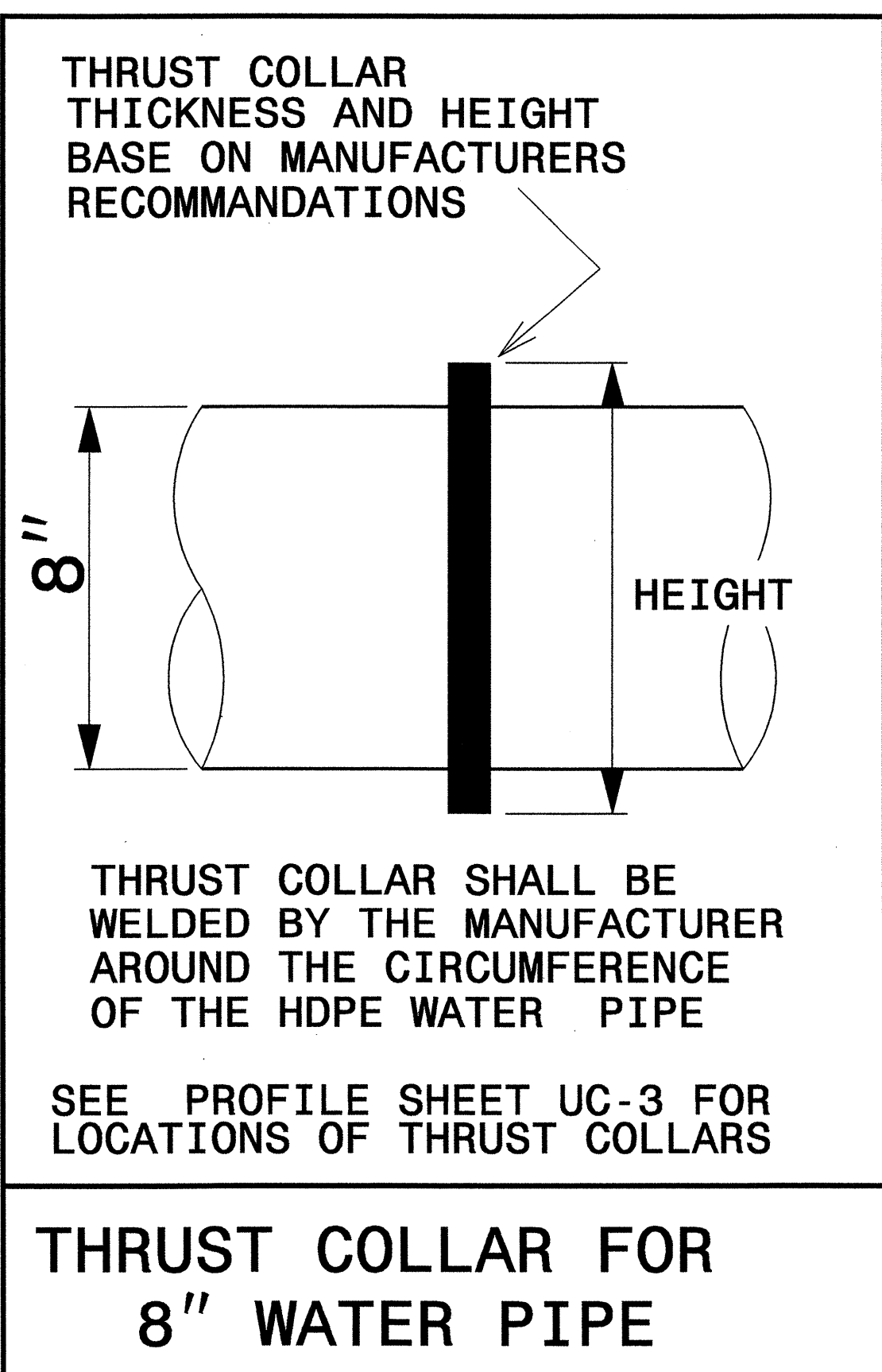
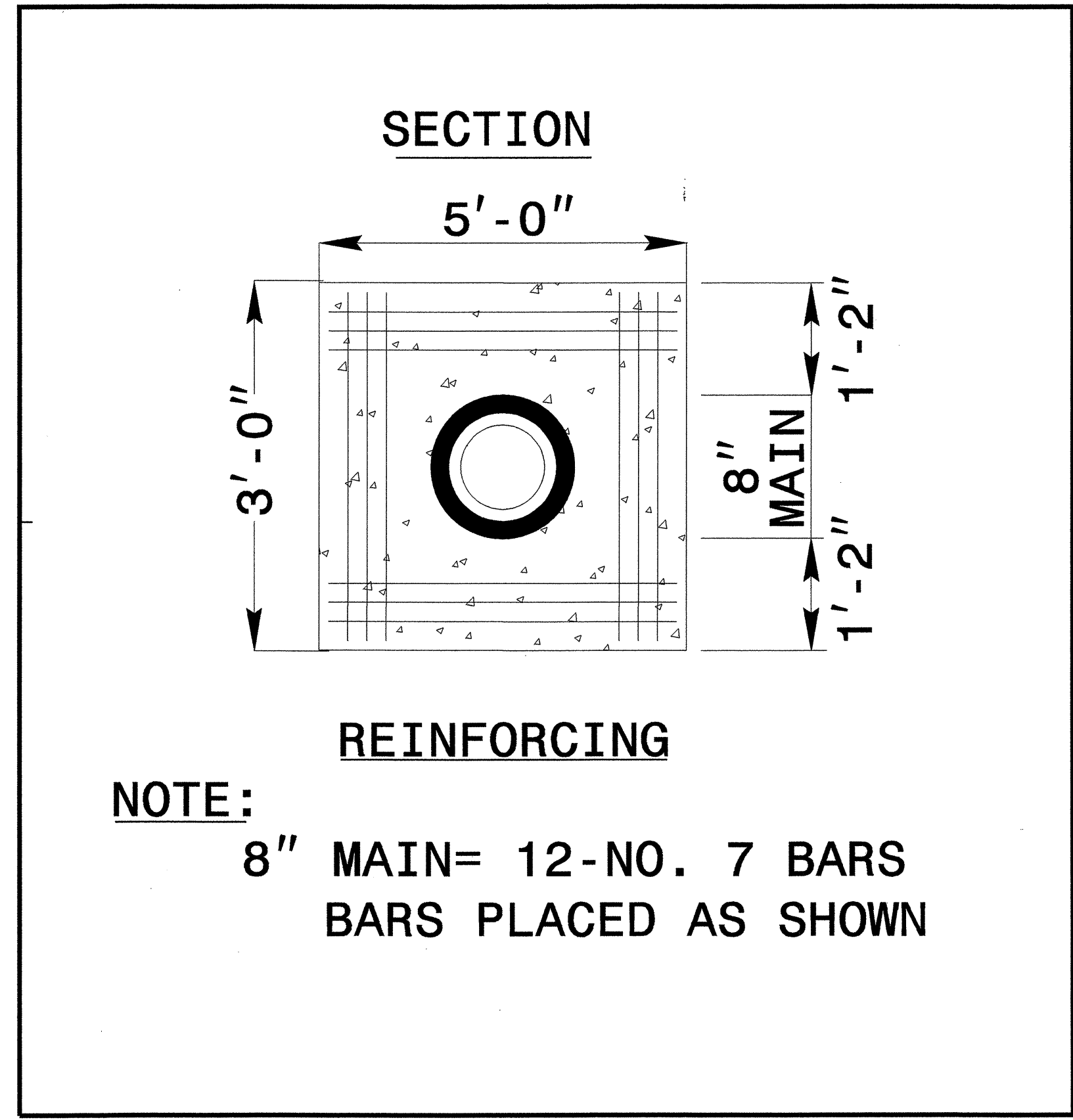
### DETAIL FOR HDPE TRENCHLESS INSTALLATION AND PVC BEDDING DETAIL

PROJECT REFERENCE NO. <b>B-4226</b>	SHEET NO. <b>UC-4</b>
DESIGNED BY: <b>CDB</b>	
DRAWN BY: <b>CDB</b>	
CHECKED BY: <b>CDB</b>	
APPROVED BY: <b>CDB</b>	
REVISED:	
	
NORTH CAROLINA DEPARTMENT OF TRANSPORTATION DESIGN SERVICES UNIT PHONE: (919)250-4128 FAX: (919)250-4119	
UTILITY CONSTRUCTION PLANS ONLY	

### UTILITY CONSTRUCTION



MAXIMUM TRENCH WIDTH AT TOP OF PIPE			
NOMINAL PIPE SIZE (INCHES)	TRENCH WIDTH (INCHES)	NOMINAL PIPE SIZE (INCHES)	TRENCH WIDTH (INCHES)
4	28	20	44
6	30	24	48
8	32	30	54
10	34	36	60
12	36	42	66
14	38	48	72
16	40	54	78
18	42		



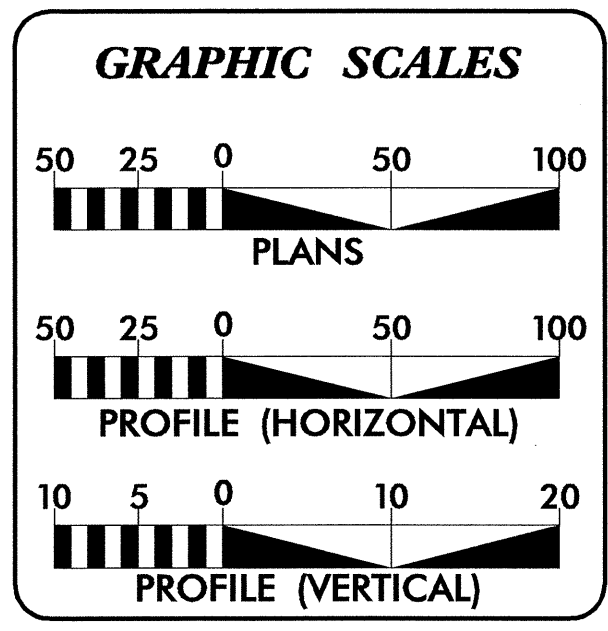
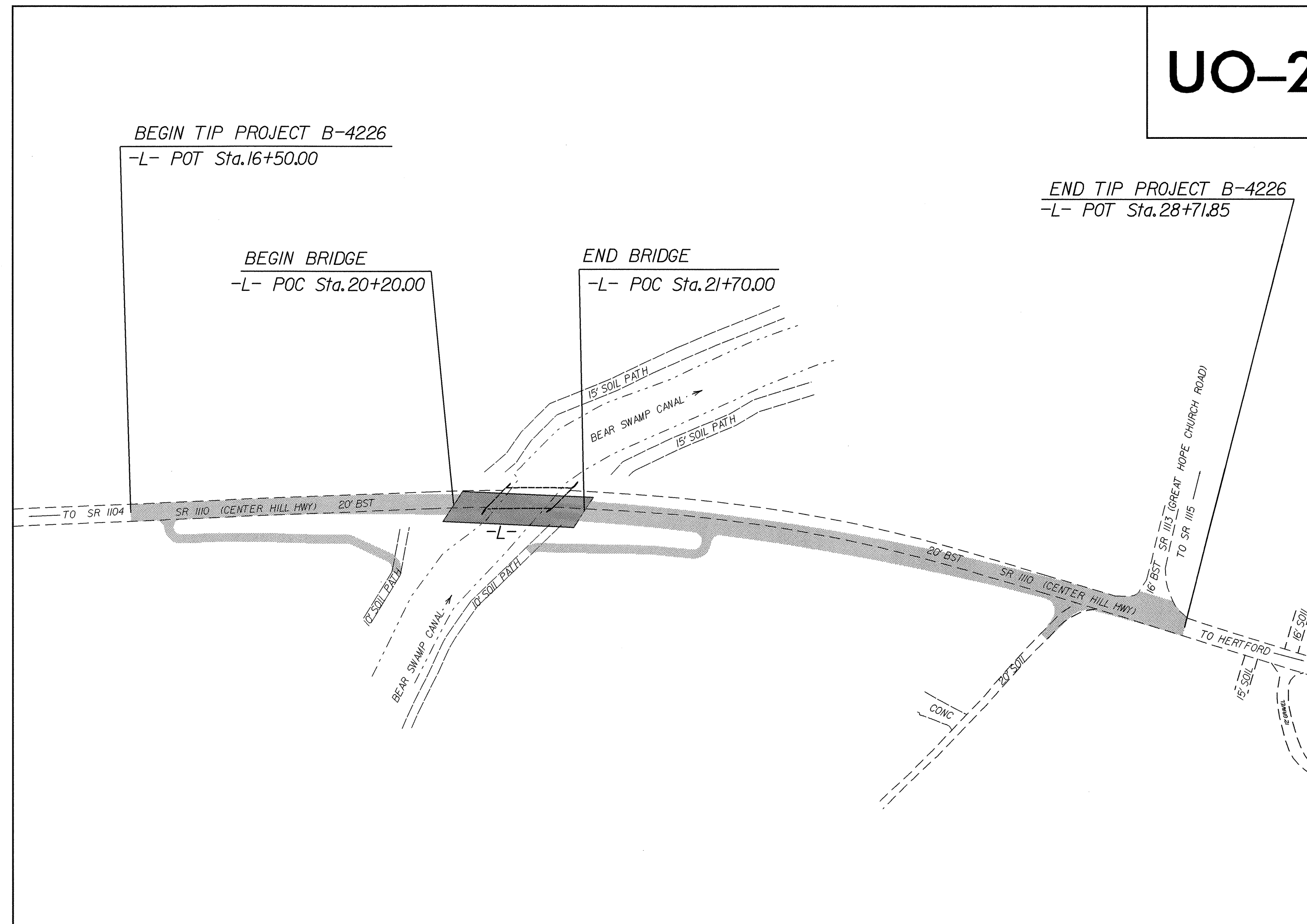
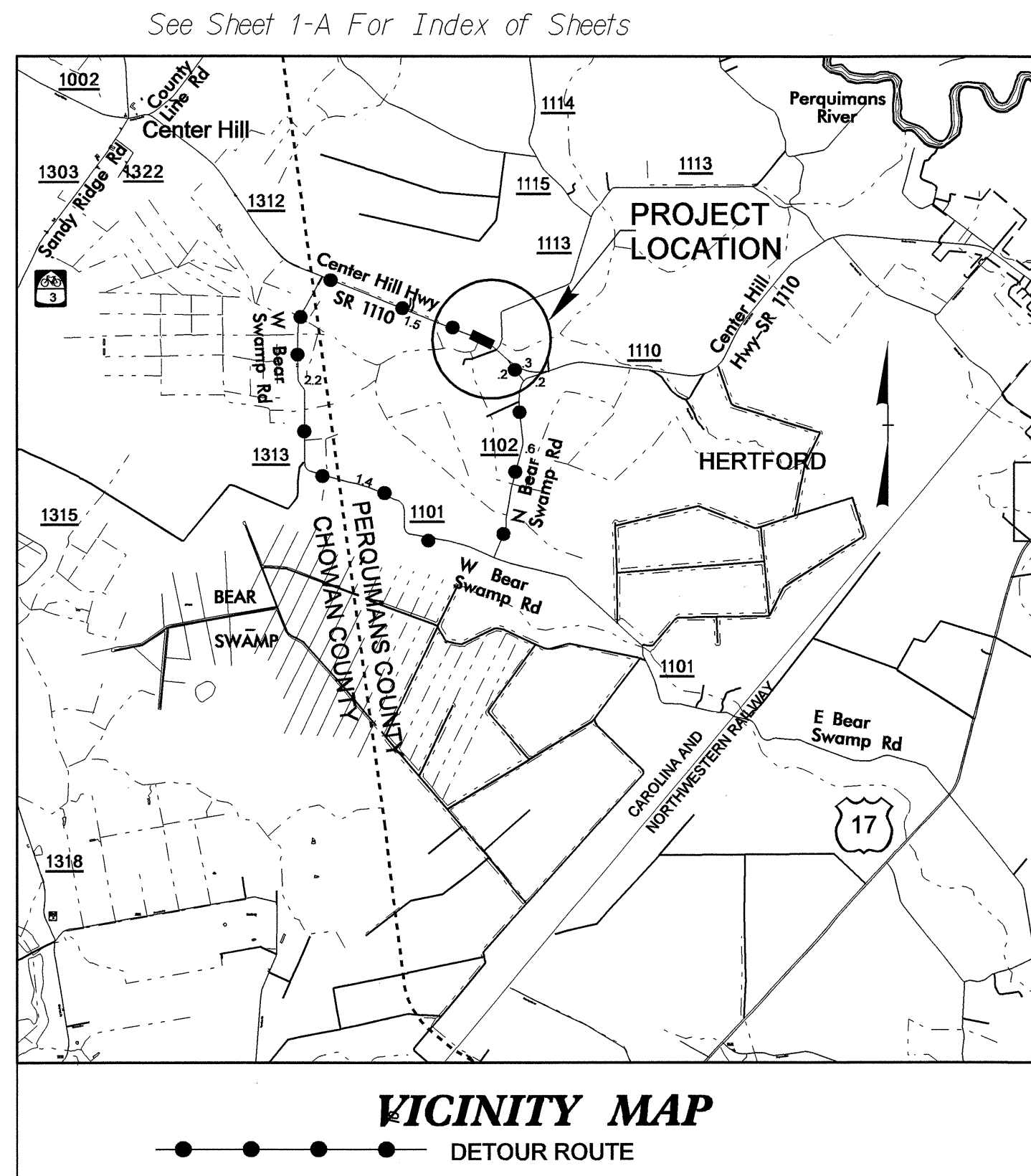
TIP PROJECT: B-4226

T.I.P. NO.	SHEET NO.
B-4226	UO-1

STATE OF NORTH CAROLINA  
DIVISION OF HIGHWAYS

**UTILITY BY OTHERS PLANS  
PERQUIMANS COUNTY**

**LOCATION: BRIDGE 62 OVER BEAR SWAMP CANAL ON SR 1110  
TYPE OF WORK: UTILITY RELOCATION**



**INDEX OF SHEETS**

SHEET NO.	DESCRIPTION
UO-1	TITLE SHEET
UO-2	UTILITY BY OTHERS PLAN SHEET

**UTILITY OWNERS ON PROJECT**

- ALBEMARLE ELECTRIC
- EMBARQ (CABLE)
- PIEDMONT NATURAL GAS

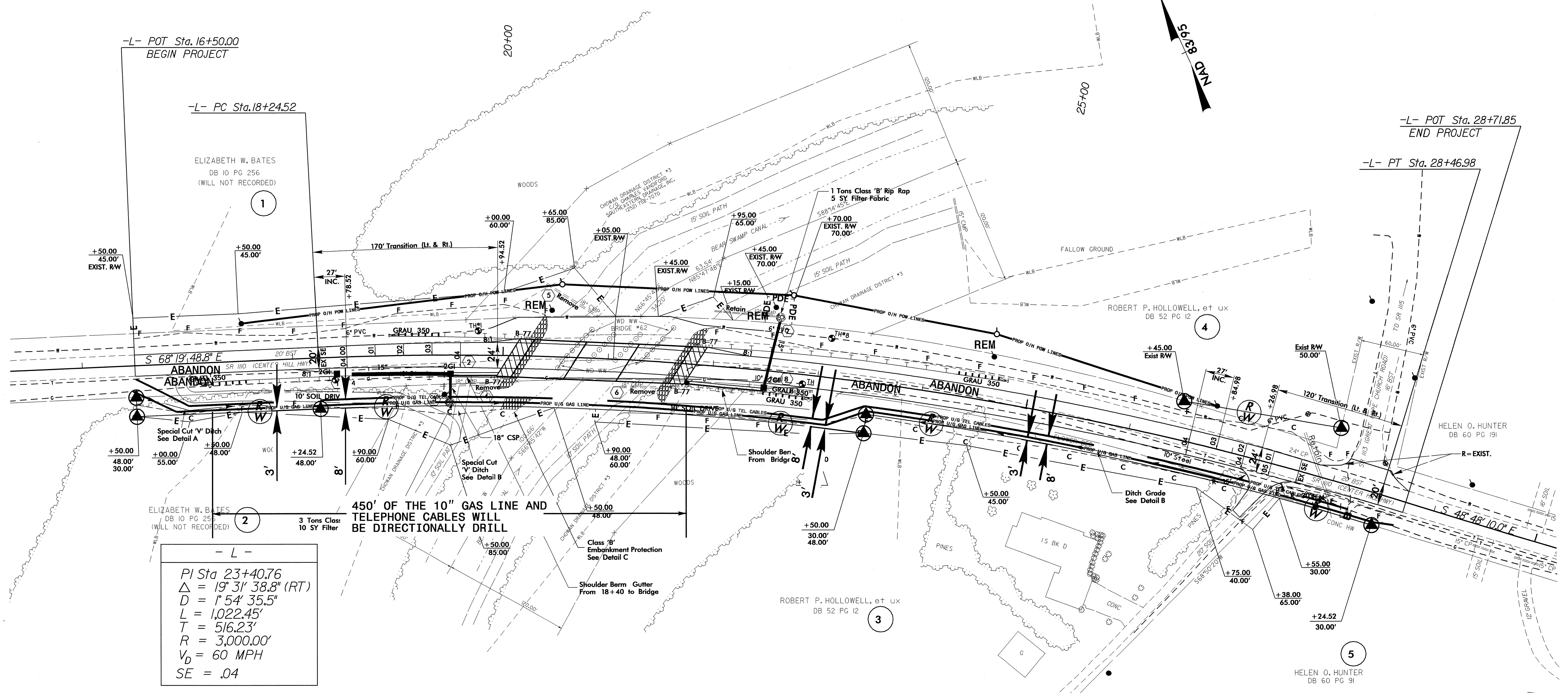
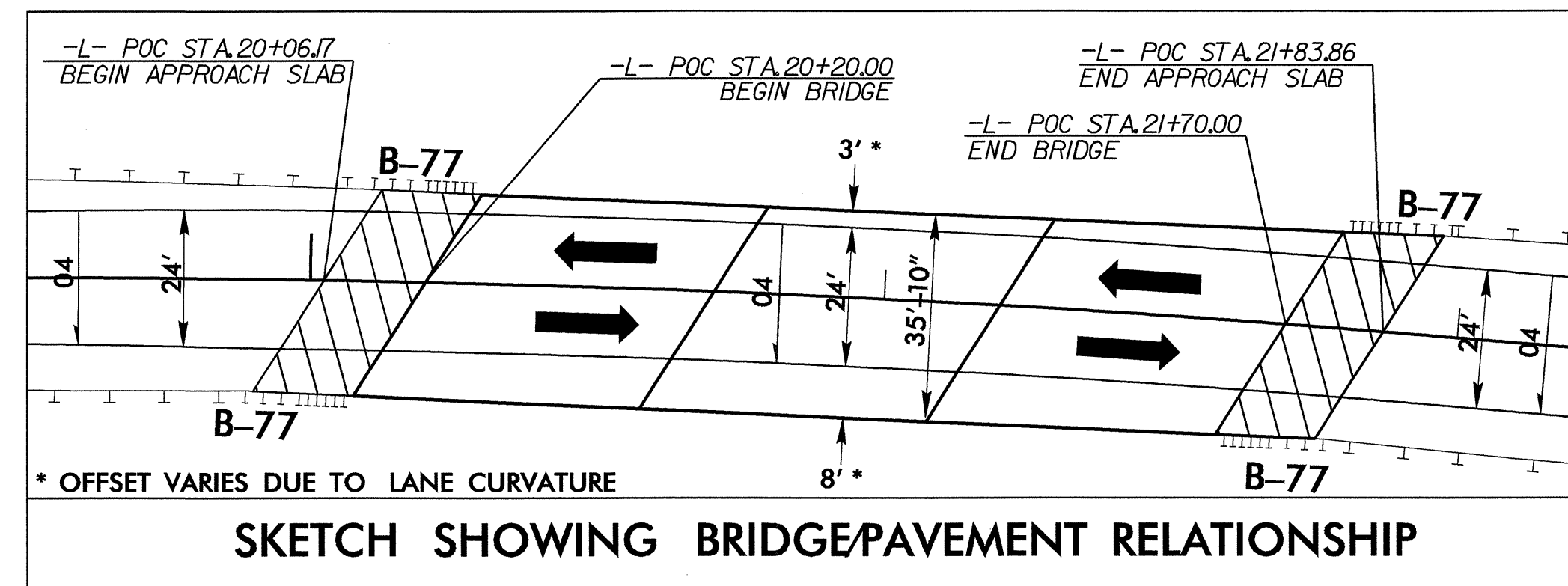
PREPARED IN THE OFFICE OF:  
**DIVISION OF HIGHWAYS  
DESIGN SERVICES  
UTILITY SECTION**

1591 MAIL SERVICES CENTER  
RALEIGH NC 27699-1591  
PHONE (919) 250-4128  
FAX (919) 250-4119

**Roger Worthington, P.E.** UTILITIES SECTION ENGINEER  
**Corey Bousquet, P.E.** UTILITIES SQUAD LEADER PROJECT ENGINEER  
**Stephanie Athey** UTILITIES PROJECT DESIGNER

UTILITIES BY OTHERS

NOTE:  
ALL PROPOSED UTILITY WORK  
SHOWN ON THIS SHEET WILL  
BE DONE BY OTHERS



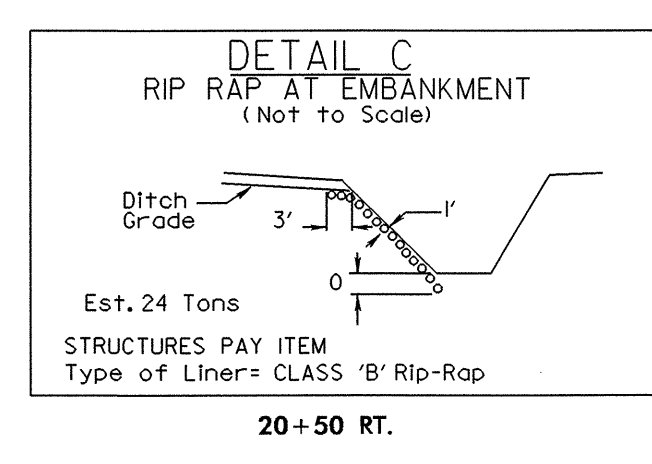
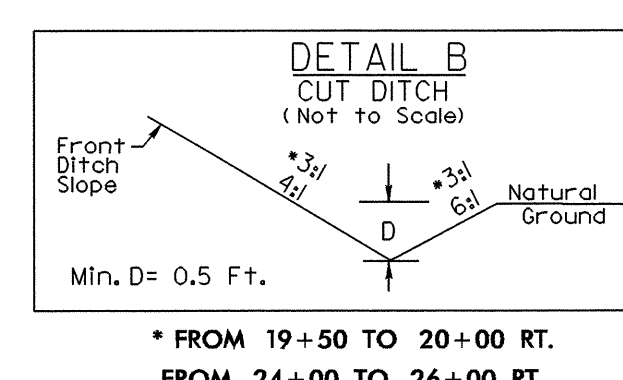
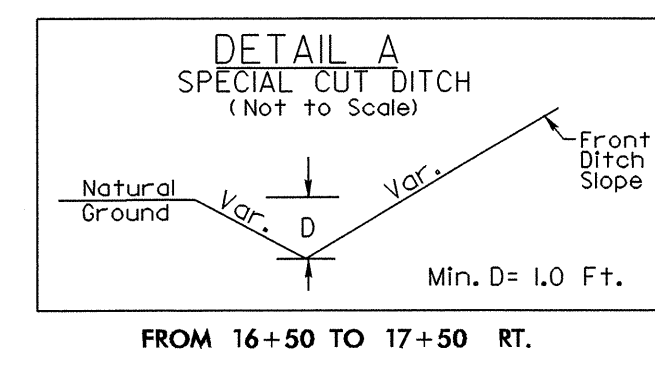
450' OF THE 10" GAS LINE AND TELEPHONE CABLES WILL BE DIRECTIONALLY DRILL

3 Tons Class 10 SY Filter

Class 'B' Embankment Protection See Detail C

Shoulder Berm From 18+40 to Bridge

- L -  
 PI Sta 23+40.76  
 $\Delta = 19^{\circ} 31' 38.8''$  (RT)  
 $D = 1^{\circ} 54' 35.5''$   
 $L = 1,022.45'$   
 $T = 516.23'$   
 $R = 3,000.00'$   
 $V_D = 60$  MPH  
 $SE = .04$



-SEE SHEET 5 FOR -L- PROFILE.  
-SEE SHEETS S-1 THRU S- FOR STRUCTURE PLAN.

5/14/99  
 28-NOV-2007 14:51  
 r:\utilities\cd\utproj\proj\B4226.ut\_rdy\_4\_uo2.dgn  
 \$\$\$\$SUSANNAH\$\$\$\$