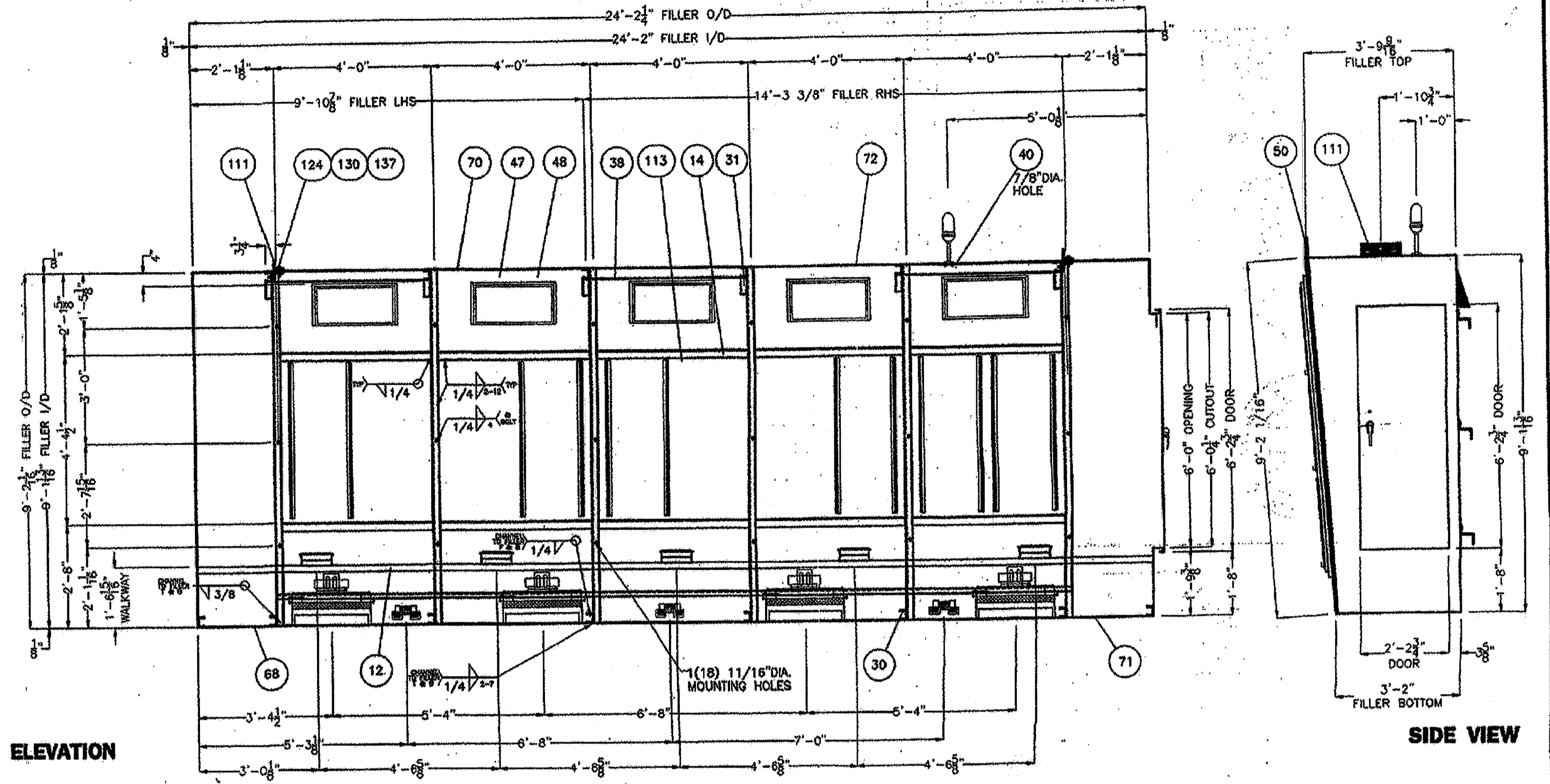
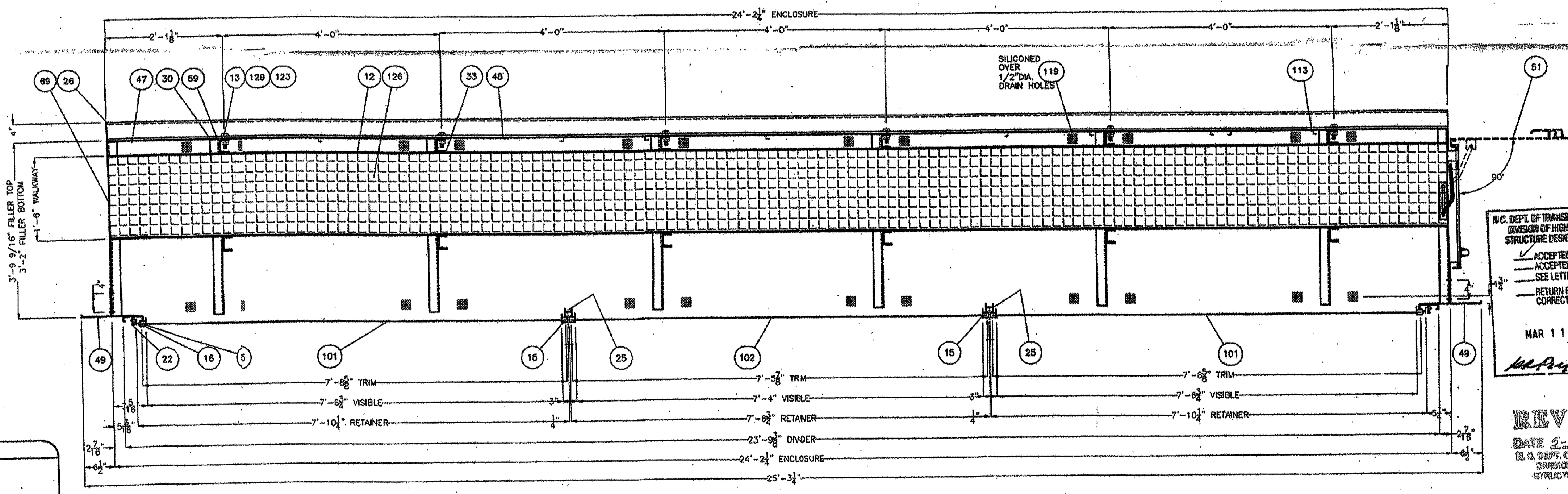


PICTORIAL VIEW



FRONT ELEVATION

SIDE VIEW



HORIZONTAL CROSS SECTION

- GENERAL NOTES:**
- ENCLOSURE MUST BE WATER RESISTANT
  - WINDOWS MUST OPEN @ 90°
  - PROP RODS TO BE @ 2 ENDS OF RETAINER
  - MODULE PANELS: 20-3/16" H x 18.200" W
  - ALL WELDS MUST BE CONTINUOUS ON EXTERIOR OF CABINET
  - TEKSIGN HAS QUALIFIED PROCEDURES AND QUALIFIED WELDERS FOR WELDING SIGN ENCLOSURES IN ACCORDANCE WITH ANSI/AWS D1.2-80 STRUCTURAL WELDING CODE - ALUMINUM USE ER5356 WELD WIRE FOR ALUMINUM
  - REMOVE WELD SPLATTER
  - INTERIOR OF CABINET WILL HAVE STANDARD MANUFACTURING MARKS DUE TO METHOD OF FABRICATION
  - ALL ALUMINUM ANGLES ARE STRUCTURAL
  - CORROSION PROTECTION BETWEEN DISSIMILAR METALS SHALL BE PROVIDED
  - ALL HARDWARE TO BE S/S - SURFACE RUST MARKS MIGHT OCCUR AFTER TORQUE
  - MOUNTING BOLTS TO BE U.S. MAT'L. & U.S. MFG. TOLERANCE ±1/16" UNLESS OTHERWISE SPECIFIED
  - STEADY STATE WIND: 80 MPH + 30% GUSTS
  - HEIGHT FACTOR: 1.10
  - SHAPE FACTOR: 1.20
  - DESIGN WIND LOAD: 36.55 PSF
  - ENCLOSURE TO BE LIFTED WITH SPREADER BAR

- FINISH:**
- CLEAN SURFACE WITH DEOXINE # 1) OR EQUIV.
  - COAT SURFACE WITH ALODINE # 10S OR EQUIV.
  - TOP, BOTTOM, REAR & SIDES
  - WHITE WATERBASE GRIP-GARD HP PNER 10-15' GLOSS # 9403271
  - INSIDE - 2 COATS BLACK GRIP-GD ACRYLIC URETHANE ENAMEL 10-15' GLOSS # 9442002
  - FRONT - 2 COATS BLACK GRIP-GD ACRYLIC URETHANE ENAMEL 10-15' GLOSS # 9442002
  - ALL COATS OF PAINT SHALL BE AT LEAST 2 MILS THICK
  - RETAINERS TO BE BLACK ANODIZED

- WATER TEST CRITERIA:**
- EQUIPMENT USED: 800/MODEL 559.72335 SEARS/CRAFTSMAN POWER WASHER
  - MAXIMUM PRESSURE: 800 PSI
  - WORKING PRESSURE: 600 PSI
  - CAPACITY/VOLUME: 1.5 GPH
  - NOZZLE DISTANCE FROM ENCLOSURE: 12 INCHES
  - SPRAYING TIME PER ENCLOSURE: 10-15 MINUTES
  - COMPLETE ENCLOSURE IS THOROUGHLY SPRAYED FROM TOP TO BOTTOM USING 3/4" DIA. GARDEN HOSE ANGLED 75° FROM STRAIGHT DOWN 12 INCHES FROM SURFACE

THESE PLANS HAVE BEEN PROPERLY EXAMINED BY THE UNDERSIGNED. I HAVE DETERMINED THAT THEY COMPLY WITH EXISTING LOCAL NORTH CAROLINA CODES, AND HAVE BEEN PROPERLY SITE ADAPTED FOR USE IN THIS AREA.

**KO & ASSOCIATES, PC**  
RALEIGH, NC  
APR 0 1 2003  
DATE

BY: *[Signature]*

ACCEPTED AS NOTED  
SEE LETTER  
RETURN FOR CORRECTION

MAR 1 1 2004 S.A.F.

PROFESSIONAL SEAL  
12323  
ISRAELI

NO. & ASSOCIATES  
1911 SCHAUB DR.  
RALEIGH, NC 27606

**REVIEWED**  
DATE 5-2-03 BY S.A.F.  
D.S. DEPT. OF TRANSPORTATION  
DIVISION OF HIGHWAYS  
STRUCTURE DESIGN UNIT

PROFESSIONAL SEAL  
12323  
PROVINCE OF ONTARIO

ECN #	REV.	DESCRIPTION	DATE	APPROVED	
				SALES	ENG

This drawing is the property of TEKSIGN Inc. and contains proprietary and confidential information which must not be duplicated, used or disclosed other than as expressly authorized by TEKSIGN Inc.

Project No. 8.T871007 (U-209F)  
Mecklenburg County  
DMS-

**TEKSIGN INC.** ISO 9001  
4916 WISCONSIN ROAD, MERRISBURG, VA 24115 TEL: (804) 877-4261 FAX: (804) 877-6269

CUSTOMER: **MARK IV - TRAFFIC CONTROL DEVICES - NCDOT**  
8400334

JOB TITLE: **DMS ENCLOSURE** WALK-IN  
**3X15-18" LED CHAR. MATRIX**

SIGNATURE: *[Signature]* DATE: *[Date]*

Rev. No. EL June 28, 02

32653  
329174-100 - D 0

AS SHOWN Sheet 1 of 4











Item	Part #	Part Description	Description	Height	Width	Qty	
1	ALA-0125075075-606116	ALUM ANGLE 1/8" X 3/4" X 3/4"	DOOR-HINGE SUPPORT		6'-3 1/4"	1	
2	ALA-0125075075-606116	ALUM ANGLE 1/8" X 3/4" X 3/4"	DOOR-HINGE SUPPORT		6'-2 1/4"	1	
3	ALA-0125125125-ANBLK	ALUM ANGLE 1/8" X 1-1/4" X 1-1/4"	HANDLE-ALUM ANGLE		5"	18	
4	ALA-01881515-606116	ALUM ANGLE 3/16" X 1-1/2" X 1-1/2"	DEFOGGER DEFLECTION PLATE SUPPORT		24'-1 15/16"	1	
5	ALA-01881515-606116	ALUM ANGLE 3/16" X 1-1/2" X 1-1/2"	MIDDLE BLOWER - SUPPORT ANGLES		10 7/16"	10	
6	ALA-018822-606116	ALUM ANGLE 3/16" X 2" X 2"	BOTTOM VENT - MOUNTING ANGLES		4'-2"	8	
7	ALA-018822-606116	ALUM ANGLE 3/16" X 2" X 2"	SUPPORT ANGLE - MIDDLE BLOWER		20'-0"	1	
8	ALA-02522-606116	ALUM ANGLE 1/4" X 2" X 2"	ALUM ANGLE-DIVIDER-MID-BOT		1'-5 1/4"	8	
9	ALA-02522-606116	ALUM ANGLE 1/4" X 2" X 2"	ALUM ANGLE-DIVIDER-MID-TOP		1'-7 3/16"	6	
10	ALA-02522-606116	ALUM ANGLE 1/4" X 2" X 2"	ALUM ANGLE-DIVIDER-MID-TOP		1'-9 3/8"	6	
11	ALA-02522-606116	ALUM ANGLE 1/4" X 2" X 2"	ALUM ANGLE-DIVIDER-TOP		1'-11 1/16"	6	
12	ALA-02522-606116	ALUM ANGLE 1/4" X 2" X 2"	ALUM ANGLE-WALKWAY		24'-1 15/16"	1	
13	ALA-02522-606116	ALUM ANGLE 1/4" X 2" X 2"	DOOR-HOLD OPEN ANGLE		2'-2"	1	
14	ALA-0252225-606116	ALUM ANGLE 1/4" X 1-1/2" X 2-1/2"	RETAINER - SIDES - MIDDLE		2'-3 3/16"	12	
15	AL-AS33389-ANBLK	ALUM EXTRUSION AH33389 606316	RETAINER-ENDS		2'-3 3/16"	6	
16	AL-AS33389-ANBLK	ALUM EXTRUSION AH33389 606316	RETAINER-TOP & BOTTOM - ENDS		7'-10 1/4"	12	
17	AL-AS33389-ANBLK	ALUM EXTRUSION AH33389 606316	RETAINER-TOP & BOTTOM - MIDDLE		7'-8 3/4"	6	
18	AL-AS33389-ANBLK	ALUM EXTRUSION AH33389 606316	MODULE TRACK-TOP-MODIFIED		24'-1 15/16"	3	
19	AL-AS33389-ANBLK	ALUM EXTRUSION AH33389 606316	MODULE TRACK-BOTTOM		24'-1 15/16"	3	
20	AL-AS33389-ANBLK	ALUM EXTRUSION AH33389 606316	DIVIDER-TOP & BOTTOM		7'-5 1/2"	2	
21	AL-AS33389-ANBLK	ALUM EXTRUSION AH33389 606316	DIVIDER-MID-HORIZONTAL		23'-0 7/8"	2	
22	AL-AS33389-ANBLK	ALUM EXTRUSION AH33389 606316	DIVIDER-TOP & BOTTOM		23'-0 3/8"	2	
23	AL-AS33389-ANBLK	ALUM EXTRUSION AH33389 606316	DIVIDER - MIDDLE - VERTICAL		1'-10 15/16"	6	
24	AL-AS33389-ANBLK	ALUM EXTRUSION AH33389 606316	2" BAR-HORIZONTAL		24'-2 1/4"	3	
25	AL-AS33741	ALUM EXTRUSION AS33741 606316	DOOR-VERTICAL ROD		4'-2 1/2"	2	
26	AL-AS33741	ALUM EXTRUSION AS33741 606316	DOOR-ALUM CHANNEL-SIDES		8'-2"	2	
27	AL-AS33741	ALUM EXTRUSION AS33741 606316	DOOR-ALUM CHANNEL-T & B		2'-2"	2	
28	AL-AS33741	ALUM EXTRUSION AS33741 606316	ALUM CHANNEL-BOTTOM		3'-1 5/8"	8	
29	AL-AS33741	ALUM EXTRUSION AS33741 606316	ALUM CHANNEL-TOP		2'-5 7/8"	6	
30	AL-AS33741	ALUM EXTRUSION AS33741 606316	ALUM CHANNEL-VER-T-BACK & MID		3'-9 3/16"	6	
31	AL-AS33741	ALUM EXTRUSION AS33741 606316	ALUM CHANNEL-TOP		9'-1 1/2"	12	
32	AL-AS33741	ALUM EXTRUSION AS33741 606316	VENT BOTTOM - FINGER GUARD - FORMID		2'-0 1/4"	4	
33	AL-AS33741	ALUM EXTRUSION AS33741 606316	VENT TOP - GRATING		1'-10"	4	
34	AL-AS33741	ALUM EXTRUSION AS33741 606316	VENT TOP - GRATING		1'-11"	6	
35	AL-AS33741	ALUM EXTRUSION AS33741 606316	ALUM EXPANDED METAL 1/2" .051 THICK		24'-1 15/16"	2	
36	AL-AS33741	ALUM EXTRUSION AS33741 606316	ALUM EXPANDED METAL 1/2" .051 THICK		4'-2"	3	
37	AL-AS33741	ALUM EXTRUSION AS33741 606316	FLAT BAR-LIGHT FIXTURES		1/2"	16	
38	AL-AS33741	ALUM EXTRUSION AS33741 606316	VENT. BOTTOM - SPACERS @ FAN		2 3/8"	11 3/16"	1
39	AL-AS33741	ALUM EXTRUSION AS33741 606316	ALUM. PLATE-PROXYCELL - WITH 7/8" DIA HOLE		4 1/2"	11 3/4"	4
40	AL-AS33741	ALUM EXTRUSION AS33741 606316	DOOR-HOLD OPEN ARM		5 3/4"	4 1/2"	5
41	AL-AS33741	ALUM EXTRUSION AS33741 606316	VENT BOTTOM - FAN SUPPORT - HORIZONTAL		1'-11 3/4"	11 3/4"	1
42	AL-AS33741	ALUM EXTRUSION AS33741 606316	VENT BOTTOM - FAN SUPPORT - VERTICAL		1'-11 3/4"	11 3/4"	1
43	AL-AS33741	ALUM EXTRUSION AS33741 606316	VENT BOTTOM - FAN SUPPORT - VERTICAL		1'-11 3/4"	11 3/4"	1
44	AL-AS33741	ALUM EXTRUSION AS33741 606316	VENT BOTTOM - FAN SUPPORT - VERTICAL		1'-11 3/4"	11 3/4"	1
45	AL-AS33741	ALUM EXTRUSION AS33741 606316	GROUND STUD - 3/4" ALUM. ROD - NO PAINT		1'-1 1/2"	18	
46	AL-AS33741	ALUM EXTRUSION AS33741 606316	PROP ROD		2'-0 1/8"	2	
47	AL-AS33741	ALUM EXTRUSION AS33741 606316	BACK SKIN-LHS & RHS		9'-1 1/8"	2'-0 1/8"	2
48	AL-AS33741	ALUM EXTRUSION AS33741 606316	BACK SKIN-MID		9'-1 1/8"	4'-0"	5
49	AL-AS33741	ALUM EXTRUSION AS33741 606316	BORDER-SIDES-FORMED		1'-4"	25'-2 1/4"	1
50	AL-AS33741	ALUM EXTRUSION AS33741 606316	BORDER-TOP-FORMED-TOTAL		0'-5 1/4"	2'-5 1/4"	1
51	AL-AS33741	ALUM EXTRUSION AS33741 606316	DOOR-FORMED		3"	4"	2
52	AL-AS33741	ALUM EXTRUSION AS33741 606316	DOOR-GUIDES-T & B-FORMED		5 1/4"	3"	1
53	AL-AS33741	ALUM EXTRUSION AS33741 606316	DOOR-HAT SECTION-FORMED		3 1/4"	4"	1
54	AL-AS33741	ALUM EXTRUSION AS33741 606316	DOOR-HAT SECTION-SPACER-FORMED		1'-1 1/8"	2'-0"	5
55	AL-AS33741	ALUM EXTRUSION AS33741 606316	DOOR-HOLD OPEN CHANNEL-FORMED		5 3/4"	3"	18
56	AL-AS33741	ALUM EXTRUSION AS33741 606316	DOOR-STOPPER-ALUM PLATE		1'-11 1/8"	2'-0"	5
57	AL-AS33741	ALUM EXTRUSION AS33741 606316	MODULE TRACK BRACKET-BOTT-FORMID		3 1/2"	3 1/2"	16
58	AL-AS33741	ALUM EXTRUSION AS33741 606316	MOUNTING BRACKET - MIDDLE BLOWER		7 7/8"	1'-3 3/4"	8
59	AL-AS33741	ALUM EXTRUSION AS33741 606316	SHIMS-MOUNTING BOLDS		2 7/8"	10"	8
60	AL-AS33741	ALUM EXTRUSION AS33741 606316	VENT BOTTOM-BODY-FORMED		6 3/4"	2'-4"	4
61	AL-AS33741	ALUM EXTRUSION AS33741 606316	VENT BOTTOM-FILTER HOLD DOWN CUP		4 1/4"	1'-0"	8
62	AL-AS33741	ALUM EXTRUSION AS33741 606316	VENT BOTTOM-HOOD-FORMED		3 5/8"	1'-11 3/4"	5
63	AL-AS33741	ALUM EXTRUSION AS33741 606316	VENT BOTTOM-TOP BODY-FORMED		1'-3 1/4"	2'-9 1/2"	1
64	AL-AS33741	ALUM EXTRUSION AS33741 606316	VENT TOP-INNER-FORMED		1'-2"	2'-9 1/2"	1
65	AL-AS33741	ALUM EXTRUSION AS33741 606316	VENT TOP-OUTSIDE-FORMED		1'-2"	9'-10 7/8"	1
66	AL-AS33741	ALUM EXTRUSION AS33741 606316	FILTER-SIDES-FORMED		4'-8 1/8"	9'-10 7/8"	1
67	AL-AS33741	ALUM EXTRUSION AS33741 606316	FILTER-BOTTOM-RHS-FORMED		4'-10"	14'-3 3/8"	1
68	AL-AS33741	ALUM EXTRUSION AS33741 606316	FILTER-TOP-RHS-FORMED		4'-8 1/8"	14'-3 3/8"	1
69	AL-AS33741	ALUM EXTRUSION AS33741 606316	DOOR-HANDLE-INSIDE		3 1/2"	1'-0 1/2"	2
70	AL-AS33741	ALUM EXTRUSION AS33741 606316	LIFTING LUG-FLTE-INSIDE IN PLACE		3"	4 1/2"	4
71	AL-AS33741	ALUM EXTRUSION AS33741 606316	LIFTING LUG-SHM-INSIDE		1'-4 7/8"	3'-10"	5
72	AL-AS33741	ALUM EXTRUSION AS33741 606316	DEFOGGER DEFLECTION PLATE - FORMED		1'-4 3/16"	24'-1 15/16"	1
73	AL-AS33741	ALUM EXTRUSION AS33741 606316	BAFFLES-BOTTOM-FORMED		2 1/2"	33'-1"	1
74	AL-AS33741	ALUM EXTRUSION AS33741 606316	VENT BOTTOM-FILTER HOLDER		1'-9 1/16"	5 9/16"	18
75	AL-AS33741	ALUM EXTRUSION AS33741 606316	VENT TOP-JAWBEE CLAMP		1"	24"	24
76	AL-AS33741	ALUM EXTRUSION AS33741 606316	NEOPRENE GASKET - 1/16 THICK		75'-0"	1	
77	AL-AS33741	ALUM EXTRUSION AS33741 606316	GASKET-NEOPRENE-RET TO DIVDR		185'-0"	2	
78	AL-AS33741	ALUM EXTRUSION AS33741 606316	DOOR-CLIP		185'-0"	1	
79	AL-AS33741	ALUM EXTRUSION AS33741 606316	GASKET-SINGLE FIN-TREMOCO EPDM		185'-0"	1	
80	AL-AS33741	ALUM EXTRUSION AS33741 606316	DOOR-HANDLE-5/16SQ.33 1/4" LG.8HPT		1'-0"	2	
81	AL-AS33741	ALUM EXTRUSION AS33741 606316	GASKET-LIFTING LUG-1/4" THK RUBER		1'-0"	2	
82	AL-AS33741	ALUM EXTRUSION AS33741 606316	DOOR-LOCK-3 POINT		1 1/2"	1	
83	AL-AS33741	ALUM EXTRUSION AS33741 606316	DOOR-PIN-TOP-5/16 DIA. ALUM.		1 1/2"	2	
84	AL-AS33741	ALUM EXTRUSION AS33741 606316	DOOR-WHEELS-1/4 THICK		40	40	
85	AL-AS33741	ALUM EXTRUSION AS33741 606316	INSERTS - BOTTOM VENT & MIDDLE BLOWER		18	18	
86	AL-AS33741	ALUM EXTRUSION AS33741 606316	SOUTHCO-1 RETURN WIND HD.STRUD-12-300-20		18	18	
87	AL-AS33741	ALUM EXTRUSION AS33741 606316	SOUTHCO-CLIP-ON RECEPTACLE		18	18	
88	AL-AS33741	ALUM EXTRUSION AS33741 606316	SOUTHCO-NYLON WASHER		18	18	
89	AL-AS33741	ALUM EXTRUSION AS33741 606316	NYLON RETAINER-82-46-101-41		18	18	
90	AL-AS33741	ALUM EXTRUSION AS33741 606316	HANGING STRIPS-BOTTOM-BACK - BBS		3	3	
91	AL-AS33741	ALUM EXTRUSION AS33741 606316	HANGING STRIPS-BOTTOM-BACK - MDLE		6	6	
92	AL-AS33741	ALUM EXTRUSION AS33741 606316	HANGING STRIPS-TOP-BACK - BBS		6	6	
93	AL-AS33741	ALUM EXTRUSION AS33741 606316	HANGING STRIPS-TOP-BACK - MDLE		6	6	
94	AL-AS33741	ALUM EXTRUSION AS33741 606316	HANGING STRIPS-TOP-BACK - HOLE		6	6	
95	AL-AS33741	ALUM EXTRUSION AS33741 606316	SUNGARD LENS-UV STABILIZED POLYCARB - ENDS		3	3	
96	AL-AS33741	ALUM EXTRUSION AS33741 606316	SUNGARD LENS-UV STABILIZED POLYCARB - MIDDLE		36	36	
97	AL-AS33741	ALUM EXTRUSION AS33741 606316	EJECTOR SPRING		36	36	
98	AL-AS33741	ALUM EXTRUSION AS33741 606316	NYLON RETAINER		36	36	
99	AL-AS33741	ALUM EXTRUSION AS33741 606316	NYLON CURVED WEAR WASHER		36	36	
100	AL-AS33741	ALUM EXTRUSION AS33741 606316	RECEPTACLE-CLIP-ON		36	36	
101	AL-AS33741	ALUM EXTRUSION AS33741 606316	RETAINER-HINGE		1	1	
102	AL-AS33741	ALUM EXTRUSION AS33741 606316	DOOR-HINGE-1 1/2" OPEN-1/8" W/PH		5	5	
103	AL-AS33741	ALUM EXTRUSION AS33741 606316	VENT TOP-HINGE		2	2	
104	AL-AS33741	ALUM EXTRUSION AS33741 606316	LIFTING LUG-SUNWASHER-INSIDE		2	2	
105	AL-AS33741	ALUM EXTRUSION AS33741 606316	LIFTING LUG-SUNWASHER-OUTSIDE		2	2	
106	AL-AS33741	ALUM EXTRUSION AS33741 606316	PROP ROD PLATE		12	12	
107	AL-AS33741	ALUM EXTRUSION AS33741 606316	STEEL MOUNTING BRACKET		6	6	
108	AL-AS33741	ALUM EXTRUSION AS33741 606316	3M SCOTCHCAL-GUSSETS-2" WIDE		6	6	
109	AL-AS33741	ALUM EXTRUSION AS33741 606316	WALKWAY-WHT SKID TIRE		3	3	
110	AL-AS33741	ALUM EXTRUSION AS33741 606316	VENT TOP-FILTER-REMOVABLE		9	9	
111	AL-AS33741	ALUM EXTRUSION AS33741 606316	VENT BOTTOM-FILTER-REMOVABLE		4	4	
112	AL-AS33741	ALUM EXTRUSION AS33741 606316	HEX BOLT @ RETAINER		36	36	
113	AL-AS33741	ALUM EXTRUSION AS33741 606316	SCREEN-310 ALUM. VENT-RAIN ILES		24	24	
114	AL-AS33741	ALUM EXTRUSION AS33741 606316	HEX BOLT @ MODULE & BORD		82	82	
115	AL-AS33741	ALUM EXTRUSION AS33741 606316	HEX BOLT @ LIFTING LUGS - INDE		18	18	
116	AL-AS33741	ALUM EXTRUSION AS33741 606316	HEX BOLT @ 2-BARS		4	4	
117	AL-AS33741	ALUM EXTRUSION AS33741 606316	HEX BOLT @ LIFTING LUGS - OUDE		4	4	
118	AL-AS33741	ALUM EXTRUSION AS33741 606316	POLYESTER TAPE-BETWEEN AL.		1	1	
119	AL-AS33741	ALUM EXTRUSION AS33741 606316	WALKWAY - REMOVABLE PRCD 4'-0" ABD THE BOTTOM VENT.		1	1	
120	AL-AS33741	ALUM EXTRUSION AS33741 606316	HEX NUT @ MODULE & BORD		82	82	
121	AL-AS33741	ALUM EXTRUSION AS33741 606316	ESNA NUT@ LIFTING LUGS - INDE		18	18	
122	AL-AS33741	ALUM EXTRUSION AS33741 606316	ESNA NUT @ 2-BARS		4	4	
123	AL-AS33741	ALUM EXTRUSION AS33741 606316	ESNA NUT@ LIFTING LUGS - OUDE		4	4	
124	AL-AS33741	ALUM EXTRUSION AS33741 606316	HEX NUT - 6/HINGE		216	216	
125	AL-AS33741	ALUM EXTRUSION AS33741 606316	PAN HD. PHILIPS BOLT - 6/HINGE		104	104	
126	AL-AS33741	ALUM EXTRUSION AS33741 606316	FLAT WASHER @ MODULE & BORD		82	82	
127	AL-AS33741	ALUM EXTRUSION AS33741 606316	LOCK WASHER @ LIFTING LUGS - SIDE		18	18	
128	AL-AS33741	ALUM EXTRUSION AS33741 606316					