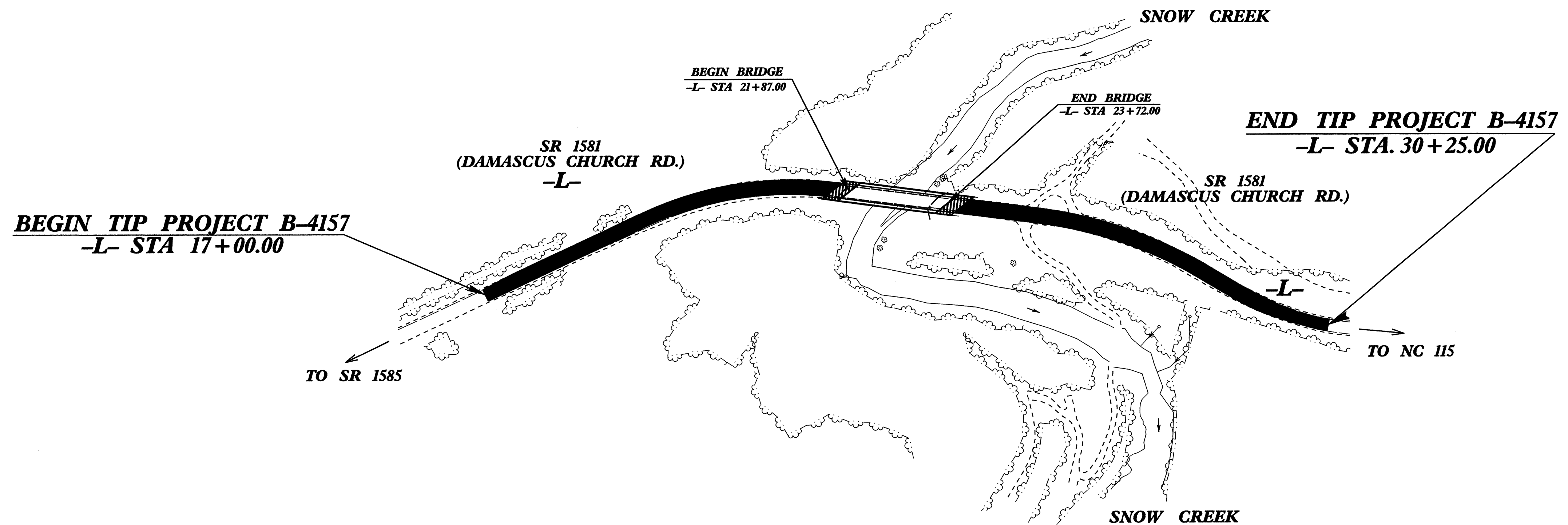
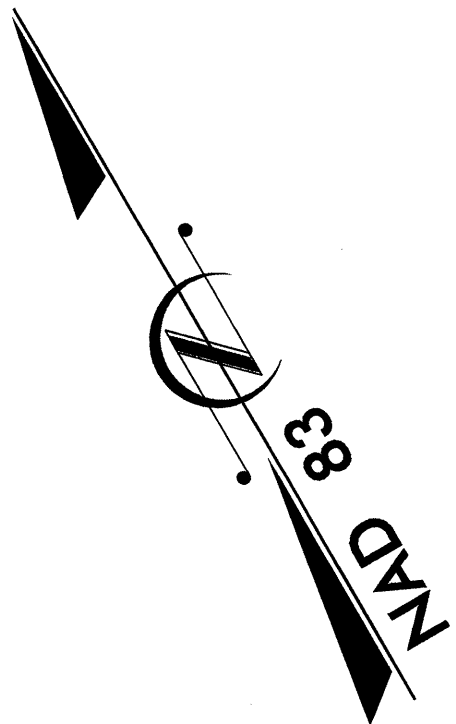


TIP PROJECT: B-4157

STATE OF NORTH CAROLINA
 DIVISION OF HIGHWAYS
 PLAN FOR PROPOSED
 HIGHWAY EROSION CONTROL
IREDELL COUNTY

**LOCATION: BRIDGE No. 140 OVER SNOW CREEK ON
 SR 1581**
**TYPE OF WORK: GRADING, DRAINAGE, PAVING
 & STRUCTURE**



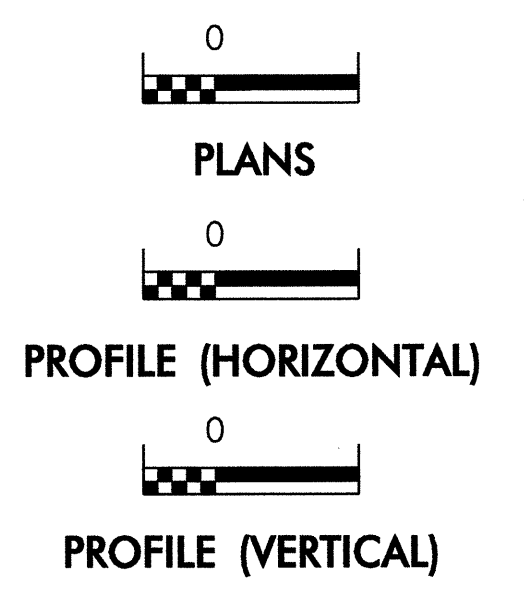
| STATE | STATE PROJECT REFERENCE NO. | SHEET NO. | TOTAL SHEETS |
|-----------------|-----------------------------|-------------|--------------|
| N.C. | B-4157 | EC-1 | |
| STATE PROJ. NO. | F.A. PROJ. NO. | DESCRIPTION | |
| | | | |
| | | | |
| | | | |
| | | | |
| | | | |

EROSION AND SEDIMENT CONTROL MEASURES

| Sed. # | Description | Symbol |
|---------|---|--------|
| | Streambank Reforestation..... | |
| 1630.03 | Temporary Silt Ditch..... | |
| 1630.05 | Temporary Diversion..... | |
| 1605.01 | Temporary Silt Fence..... | |
| 1606.01 | Special Sediment Control Fence..... | |
| 1622.01 | Temporary Berms and Slope Drains..... | |
| 1630.01 | Riser Basin..... | |
| 1630.02 | Silt Basin Type B..... | |
| 1633.01 | Temporary Rock Silt Check Type-A..... | |
| | Temporary Rock Silt Check Type-B..... | |
| 1634.01 | Temporary Rock Sediment Dam Type-A..... | |
| 1634.02 | Temporary Rock Sediment Dam Type-B..... | |
| 1635.01 | Rock Pipe Inlet Sediment Trap Type-A..... | |
| 1635.02 | Rock Pipe Inlet Sediment Trap Type-B..... | |
| 1630.04 | Stilling Basin..... | |
| | Rock Inlet Sediment Trap: | |
| 1632.01 | Type A..... | |
| 1632.02 | Type B..... | |
| 1632.03 | Type C..... | |
| | Skimmer Basin..... | |
| | Tiered Skimmer Basin..... | |
| | Infiltration Basin..... | |

**THIS PROJECT CONTAINS
 EROSION CONTROL PLANS
 FOR CLEARING AND
 GRUBBING PHASE OF
 CONSTRUCTION.**

GRAPHIC SCALE



ROADSIDE ENVIRONMENTAL UNIT
 DIVISION OF HIGHWAYS
 STATE OF NORTH CAROLINA

Prepared In the Office of:
ROADSIDE ENVIRONMENTAL UNIT
 1 South Wilmington St.
 Raleigh, NC 27611
2006 STANDARD SPECIFICATIONS

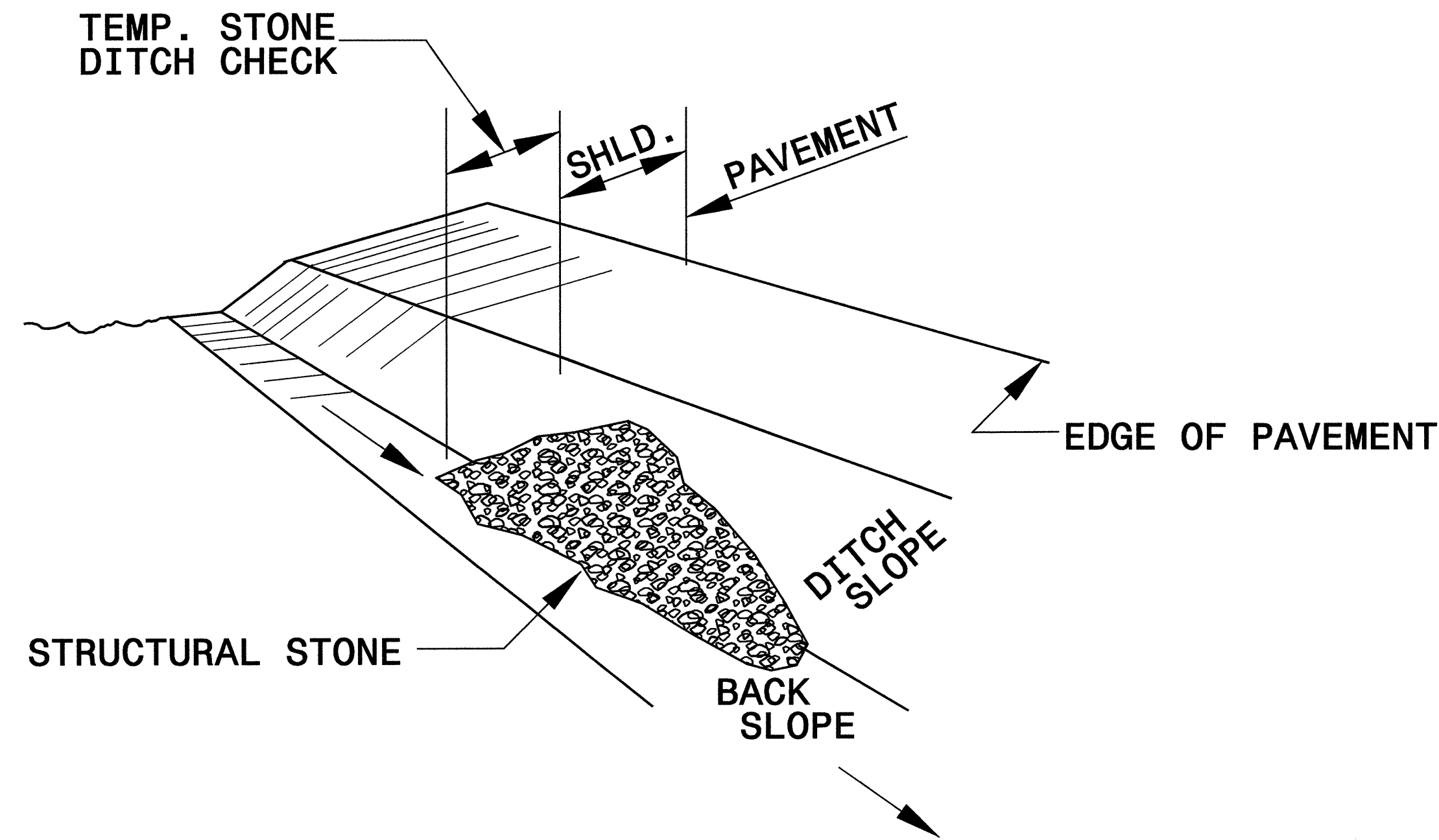
Roadway Standard Drawings

The following roadway english standards as appear in "Roadway Standard Drawings"- Roadway Design Unit - N. C. Department of Transportation - Raleigh, N. C., dated July 18, 2006 and the latest revision thereto are applicable to this project and by reference hereby are considered a part of these plans.

| | |
|--|--|
| 1605.01 Temporary Silt Fence | 1632.01 Rock Inlet Sediment Trap Type A |
| 1606.01 Special Sediment Control Fence | 1632.03 Rock Inlet Sediment Trap Type C |
| 1607.01 Gravel Construction Entrance | 1633.01 Temporary Rock Silt Check Type A |
| 1622.01 Temporary Berms and Slope Drains | 1635.01 Rock Pipe Inlet Sediment Trap Type A |
| 1630.03 Temporary Silt Ditch | |
| 1630.05 Temporary Diversion | |

| | |
|---------------------------------|---------------------|
| PROJECT REFERENCE NO. B-4157 | SHEET NO. EC-2 |
| RW SHEET NO. | |
| ROADWAY DESIGN ENGINEER | HYDRAULICS ENGINEER |

TEMPORARY ROCK SILT CHECK TYPE 'B' DETAIL

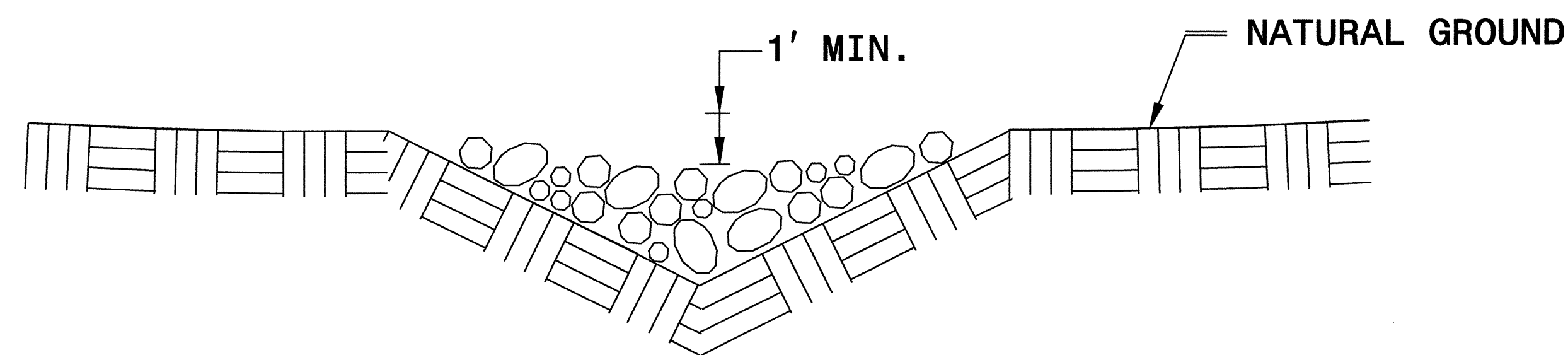


ISOMETRIC VIEW

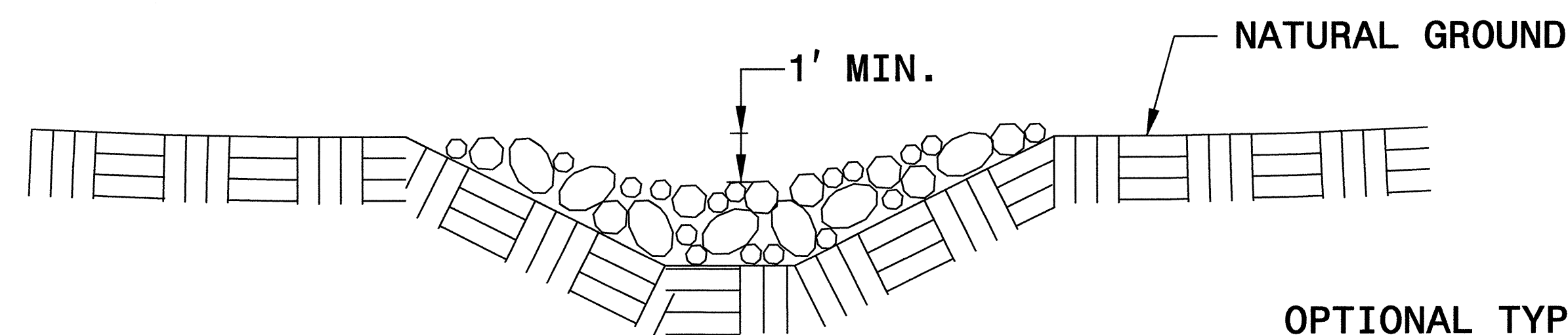
NOTES:

USE CLASS 'B' EROSION CONTROL STONE FOR STRUCTURAL STONE.

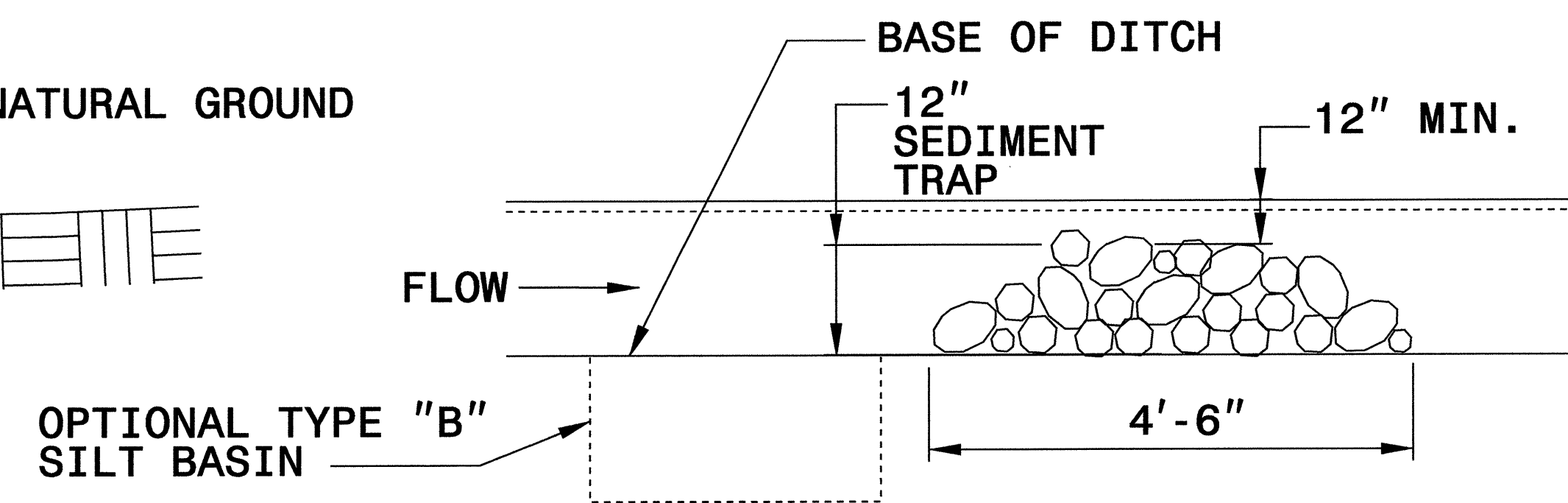
THE ENGINEER MAY DIRECT THE OPTION OF CLASS "A" STONE FOR SITES HAVING LESS THAN ONE (1) ACRE DRAINAGE AREA AND A DITCH GRADE LESS THAN 3%.



CROSS SECTION VEE DITCH



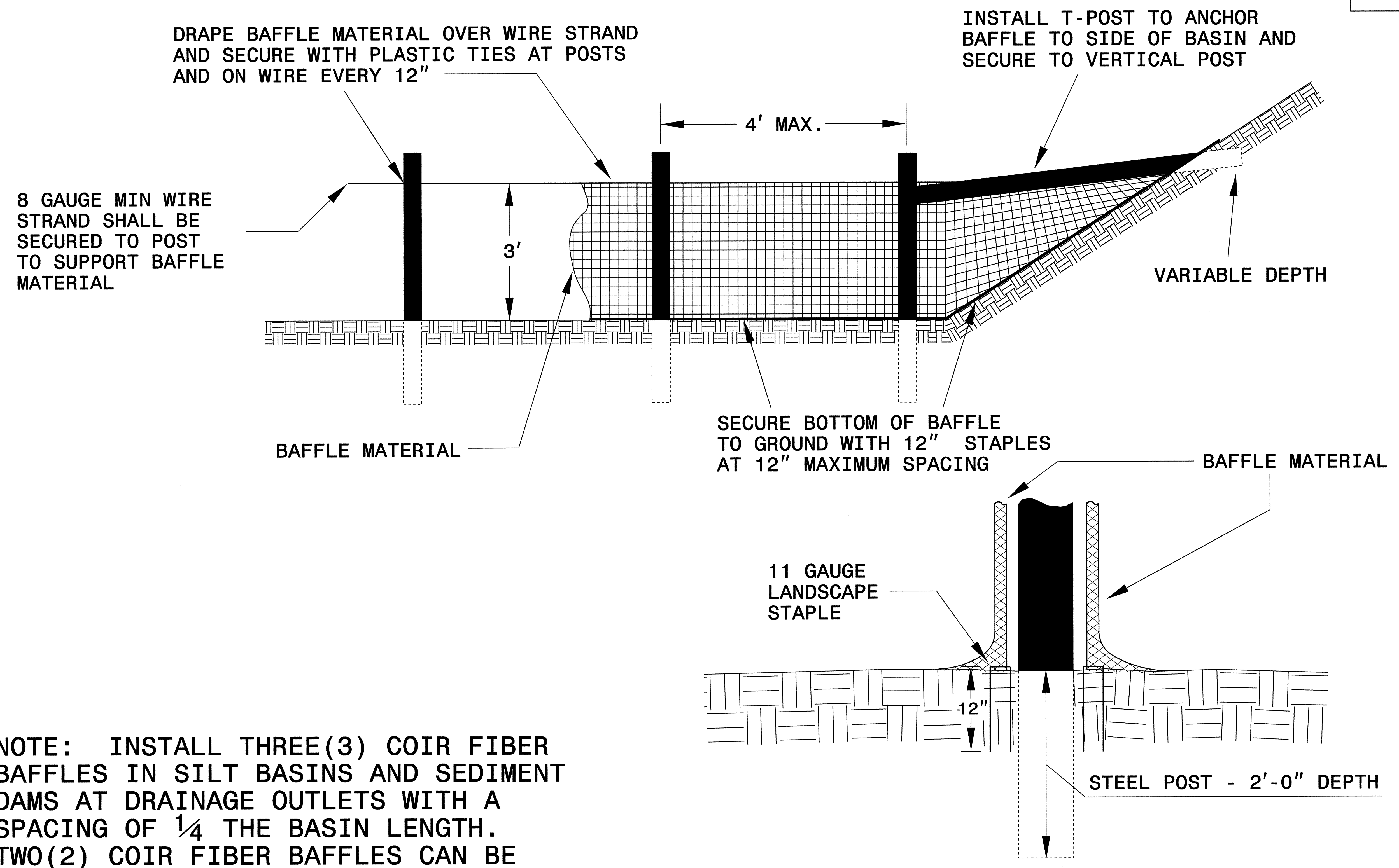
CROSS SECTION TRAPEZOIDAL DITCH



ELEVATION VIEW

| | |
|---------------------------------|------------------------|
| PROJECT REFERENCE NO. B-4157 | SHEET NO. EC-2A |
| RW SHEET NO. | |
| ROADWAY DESIGN ENGINEER | HYDRAULICS ENGINEER |

COIR FIBER BAFFLE DETAIL

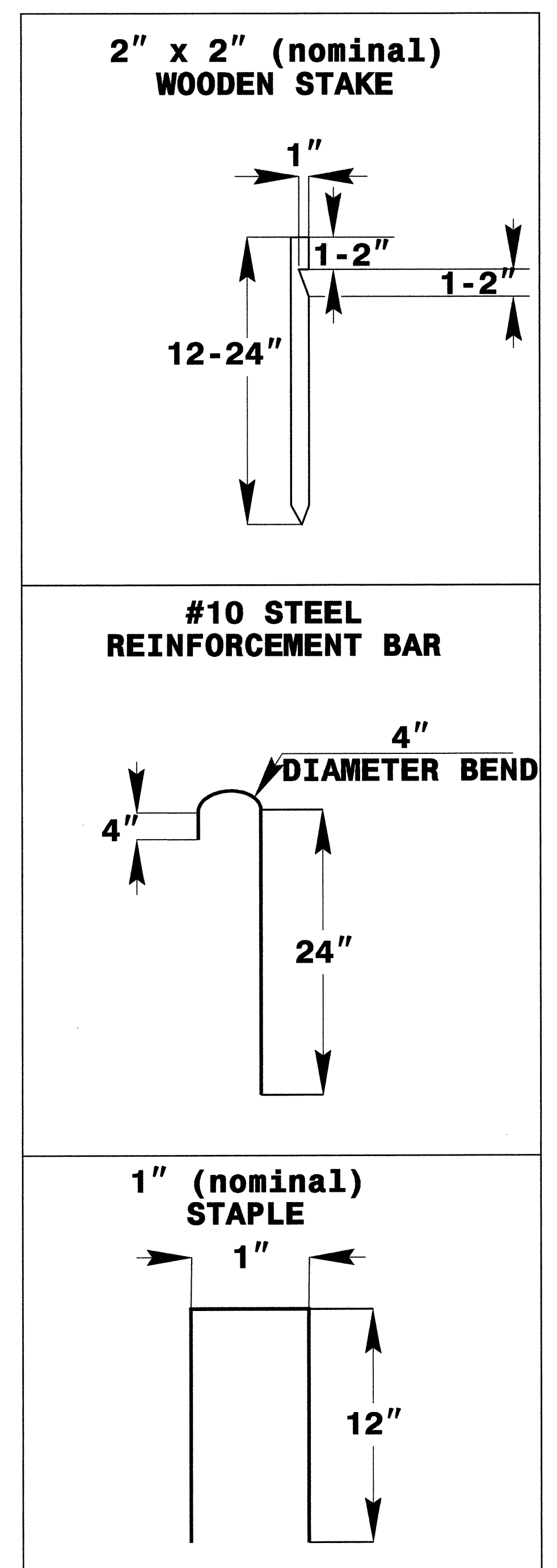
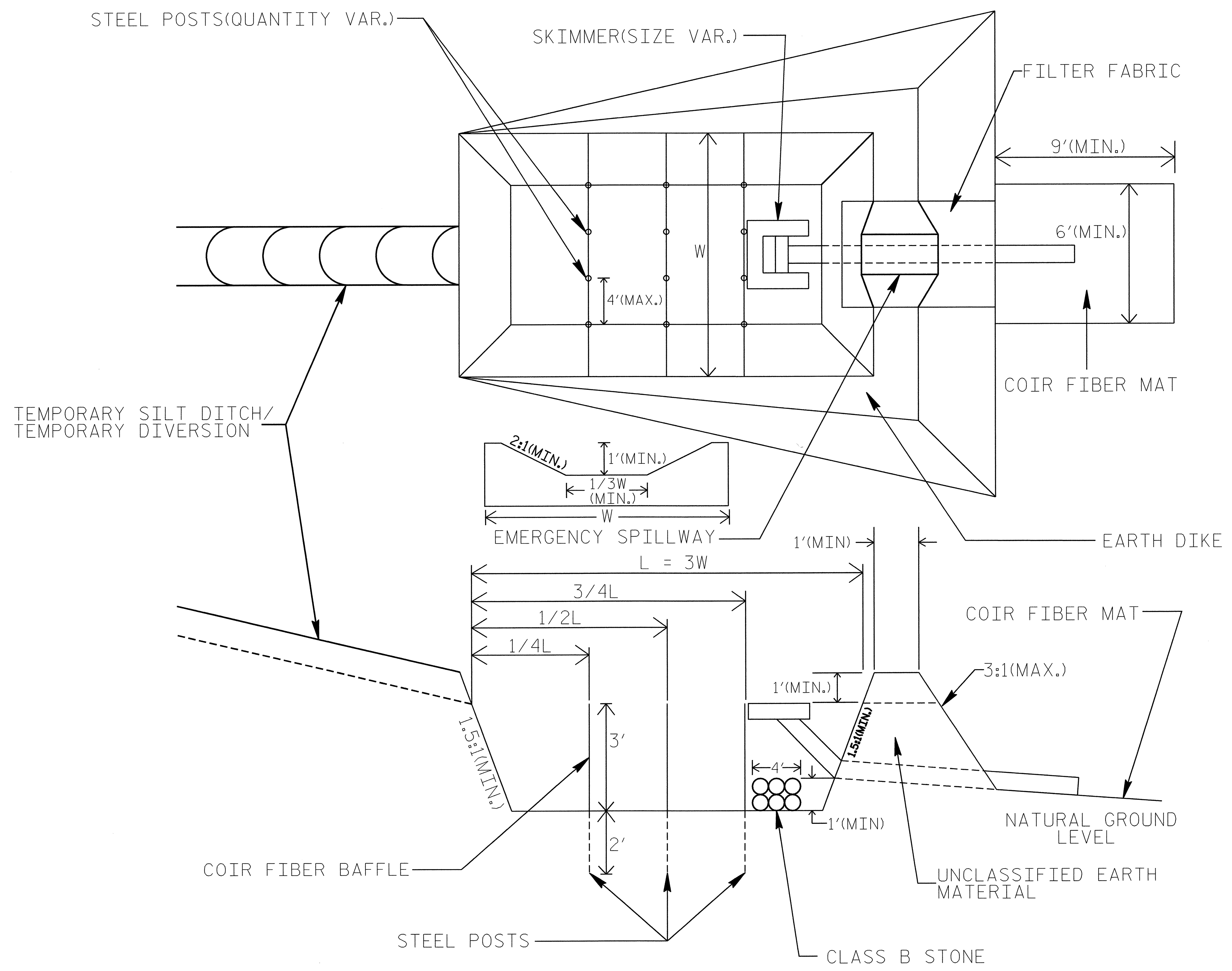


NOTE: INSTALL THREE (3) COIR FIBER BAFFLES IN SILT BASINS AND SEDIMENT DAMS AT DRAINAGE OUTLETS WITH A SPACING OF $\frac{1}{4}$ THE BASIN LENGTH. TWO (2) COIR FIBER BAFFLES CAN BE INSTALLED IN SILT BASINS AND DAMS LESS THAN 20 FT. IN LENGTH WITH A SPACING OF $\frac{1}{3}$ THE BASIN LENGTH.

BAFFLE MATERIAL SHALL BE SECURED TO THE BOTTOM AND SIDES OF BASIN USING 12" LANDSCAPE STAPLES

SKIMMER BASIN WITH BAFFLES DETAIL

| | |
|---------------------------------|---------------------|
| PROJECT REFERENCE NO. B-4157 | SHEET NO. EC-2B |
| RW SHEET NO. | |
| ROADWAY DESIGN ENGINEER | HYDRAULICS ENGINEER |

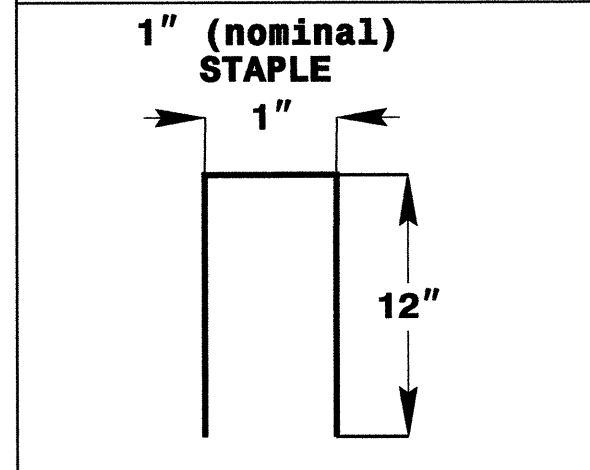
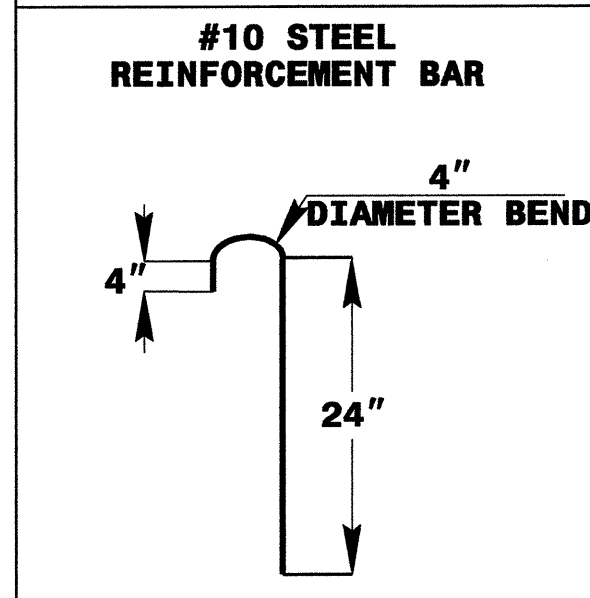
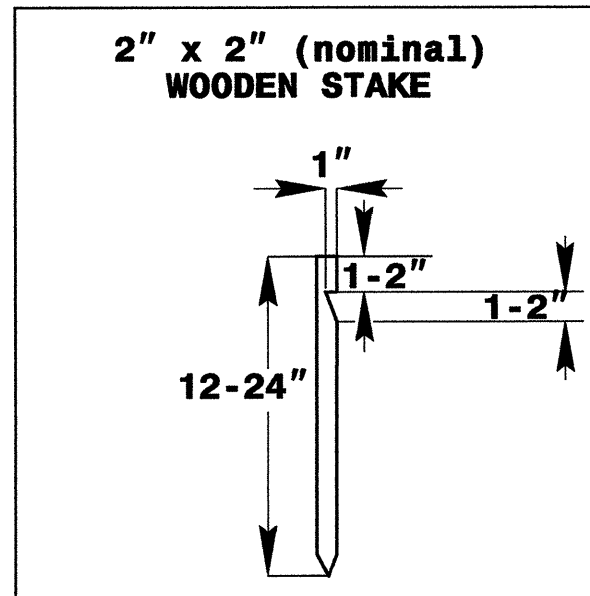
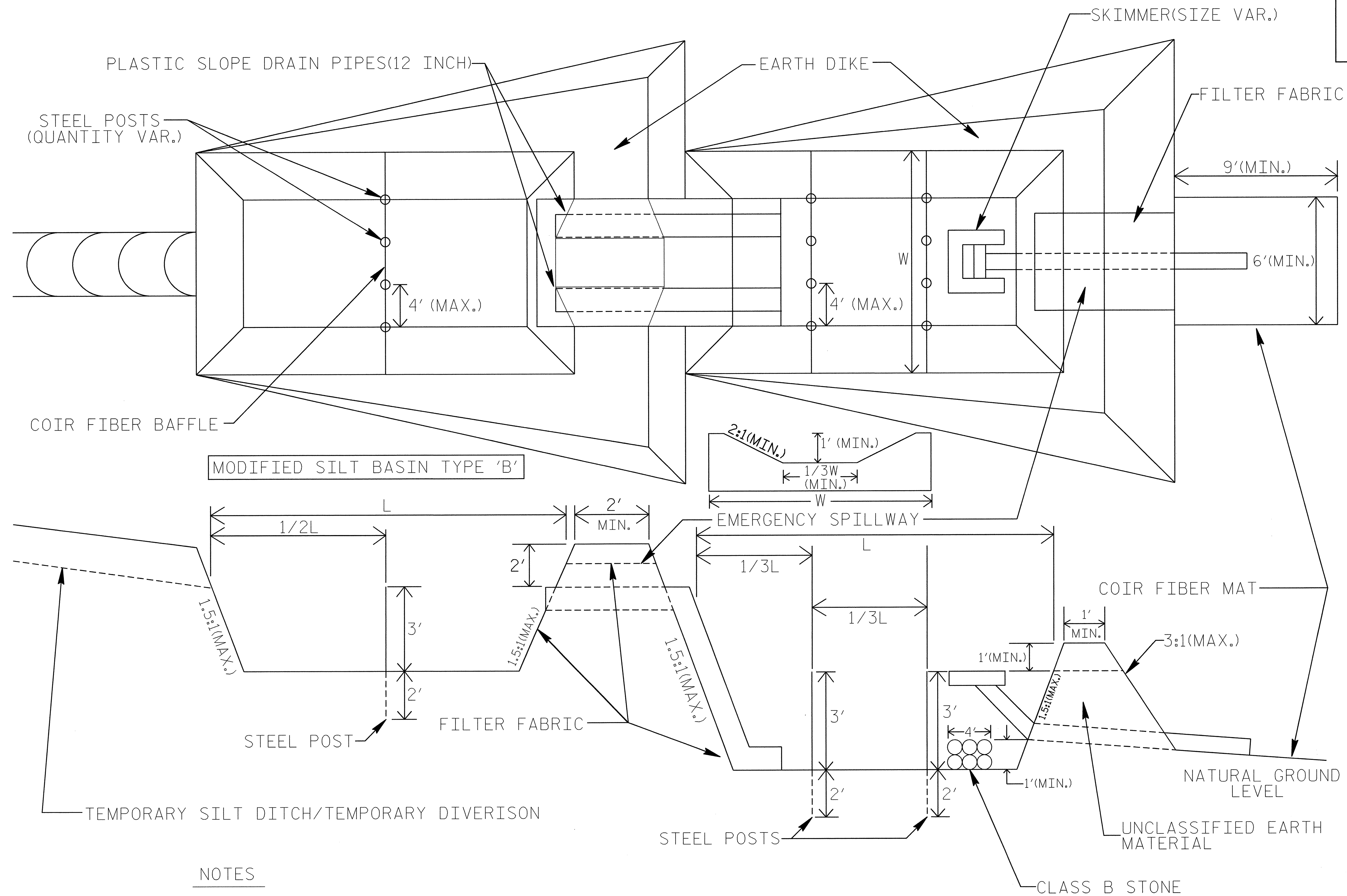


COIR FIBER MAT ANCHOR OPTIONS

- NOTES:**
1. SEED AND PLACE MATTING FOR EROSION CONTROL ON SIDESLOPES.
 2. LIMIT EARTH DIKE HEIGHT TO 5 FT.

TIERED SKIMMER BASIN DETAIL

| | |
|---------------------------------|---------------------|
| PROJECT REFERENCE NO. B-4157 | SHEET NO. EC-2C |
| RW SHEET NO. | |
| ROADWAY DESIGN ENGINEER | HYDRAULICS ENGINEER |



COIR FIBER MAT ANCHOR OPTIONS

NOTES

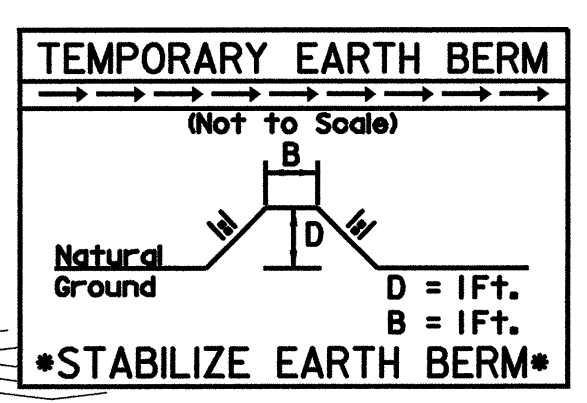
1. SEED AND PLACE MATTING FOR EROSION CONTROL ON SIDESLOPES OF BASINS.
2. LIMIT HEIGHT OF EARTH DIKES TO 5 FT.
3. ADDITIONAL MODIFIED SILT BASINS TYPE 'B' MAY BE NEEDED DEPENDING ON SLOPE.

8/17/99
AT: RENV221500

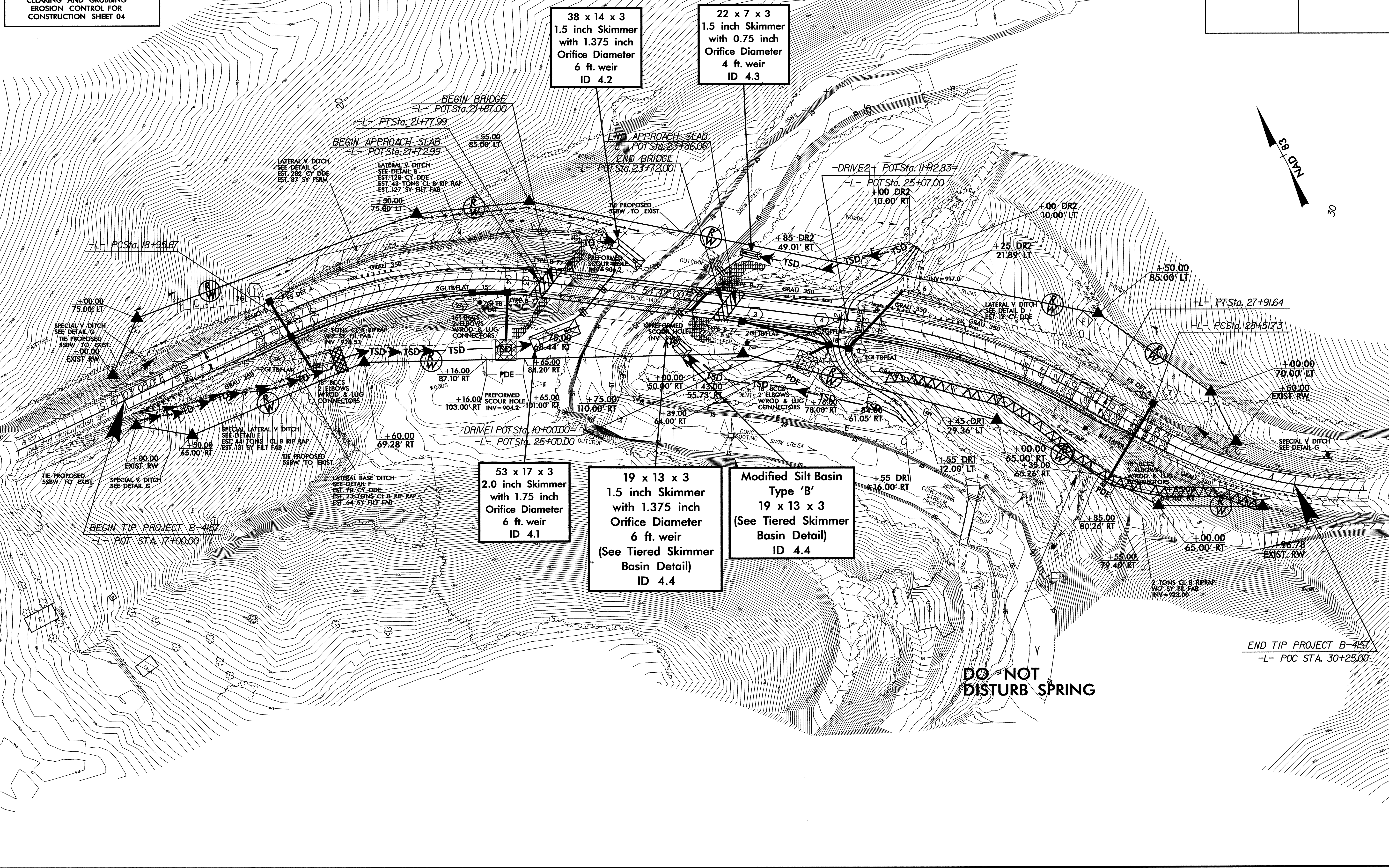
NOTE:
UTILIZE SKIMMER BASIN AS STILLING BASIN WHERE APPLICABLE.

NOTE:
PLACE TEMPORARY ROCK SEDIMENT DAMS TYPE - B AND TEMPORARY ROCK SILT CHECKS TYPE - A AT DRAINAGE OUTLETS.

CLEARING AND GRUBBING
EROSION CONTROL FOR
CONSTRUCTION SHEET 04



| | |
|---------------------------------|-----------------------------|
| PROJECT REFERENCE NO. B-4157 | SHEET NO. EC-04/CONST.04 |
| ROADWAY DESIGN ENGINEER | HYDRAULICS ENGINEER |



38 x 14 x 3
1.5 inch Skimmer
with 1.375 inch
Orifice Diameter
6 ft. weir
ID 4.2

22 x 7 x 3
1.5 inch Skimmer
with 0.75 inch
Orifice Diameter
4 ft. weir
ID 4.3

53 x 17 x 3
2.0 inch Skimmer
with 1.75 inch
Orifice Diameter
6 ft. weir
ID 4.1

19 x 13 x 3
1.5 inch Skimmer
with 1.375 inch
Orifice Diameter
6 ft. weir
(See Tiered Skimmer
Basin Detail)
ID 4.4

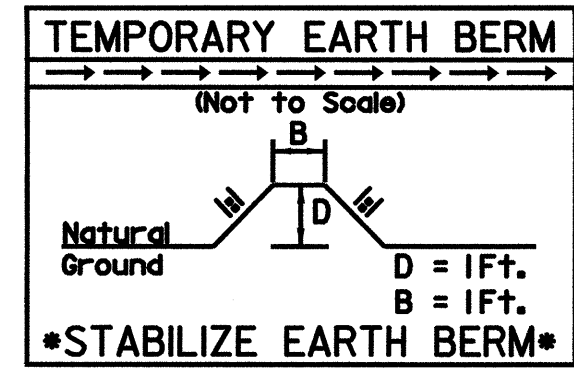
Modified Silt Basin
Type 'B'
19 x 13 x 3
(See Tiered Skimmer
Basin Detail)
ID 4.4

DO NOT
DISTURB SPRING

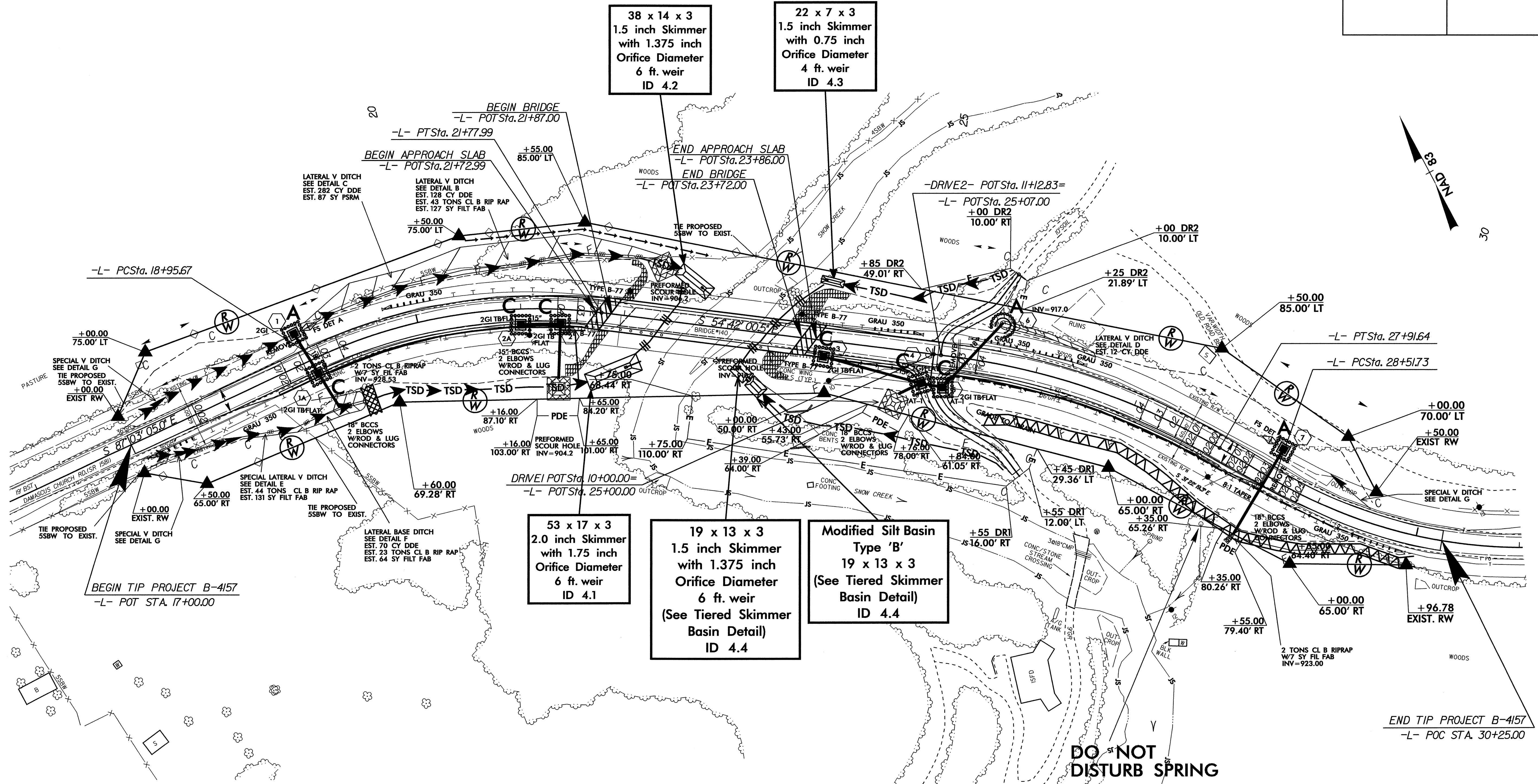
END TIP PROJECT B-4157
-L- POC STA. 30+25.00

8/17/99

NOTE: UTILIZE SKIMMER BASIN AS STILLING BASIN WHERE APPLICABLE.



| | |
|---------------------------------|-----------------------------|
| PROJECT REFERENCE NO. B-4157 | SHEET NO. EC-05/CONST.04 |
| ROADWAY DESIGN ENGINEER | HYDRAULICS ENGINEER |



AT:REIN/221500