

TIP PROJECT: B-4021

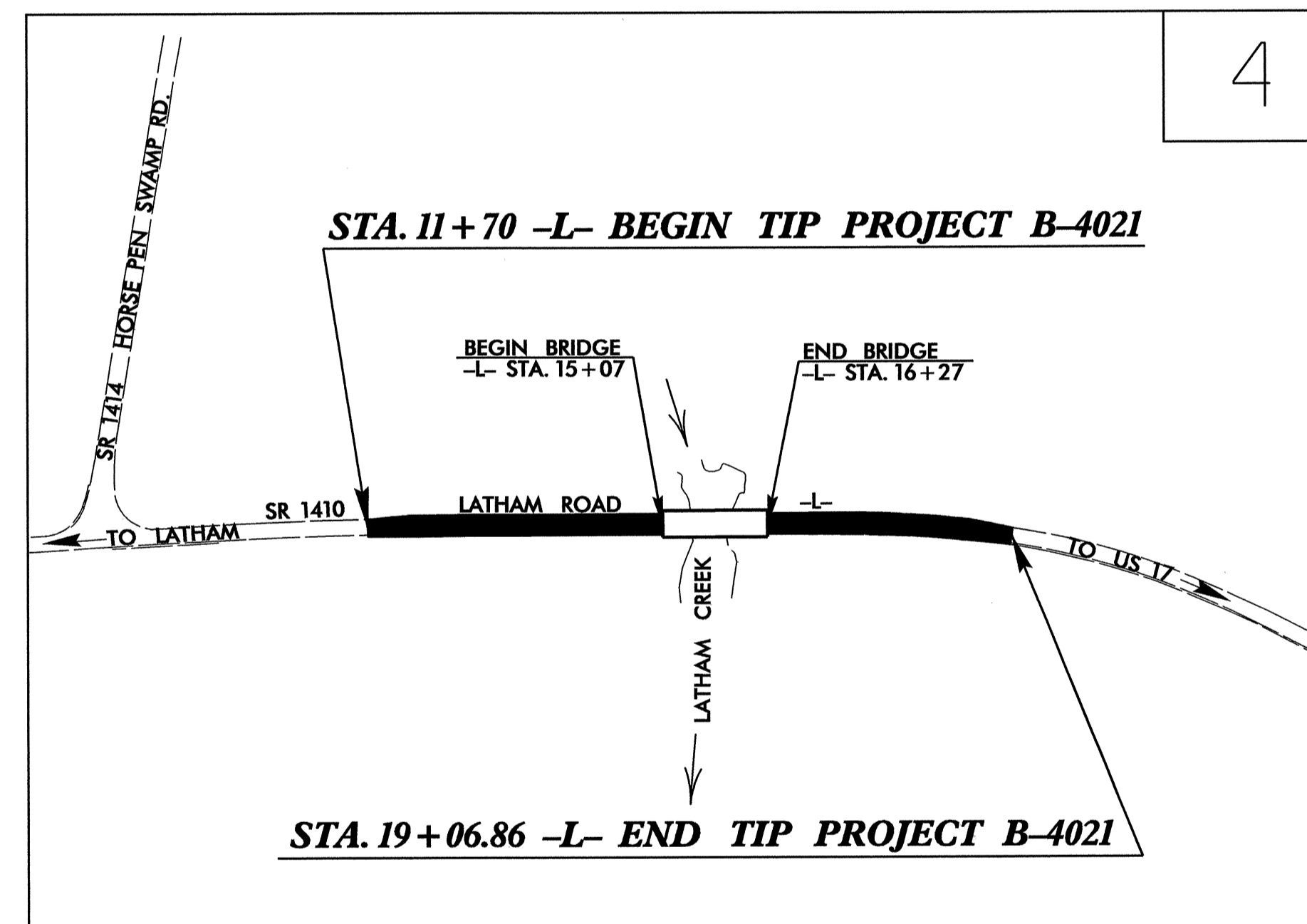
STATE OF NORTH CAROLINA
 DIVISION OF HIGHWAYS
 PLAN FOR PROPOSED
 HIGHWAY EROSION CONTROL
BEAUFORT COUNTY

LOCATION: BRIDGE NO. 84 OVER LATHAM CREEK ON SR 1410
TYPE OF WORK: GRADING, PAVING, DRAINAGE, AND STRUCTURE

STATE	STATE PROJECT REFERENCE NO.	SHEET NO.	TOTAL SHEETS
N.C.	B-4021	EC-1	
STATE PROJ. NO.	F.A. PROJ. NO.	DESCRIPTION	

EROSION AND SEDIMENT CONTROL MEASURES

Std. #	Description	Symbol
	Streambank Reforestation	
1630.03	Temporary Silt Ditch	
1630.05	Temporary Diversion	
1605.01	Temporary Silt Fence	
1606.01	Special Sediment Control Fence	
1622.01	Temporary Berms and Slope Drains	
1630.01	Riser Basin	
1630.02	Silt Basin Type B	
1633.01	Temporary Rock Silt Check Type-A	
	Temporary Rock Silt Check Type-B	
1634.01	Temporary Rock Sediment Dam Type-A	
1634.02	Temporary Rock Sediment Dam Type-B	
1635.01	Rock Pipe Inlet Sediment Trap Type-A	
1635.02	Rock Pipe Inlet Sediment Trap Type-B	
1630.04	Stilling Basin	
	Rock Inlet Sediment Trap:	
1632.01	Type A	
1632.02	Type B	
1632.03	Type C	
	Skimmer Basin	
	Tiered Skimmer Basin	
	Infiltration Basin	

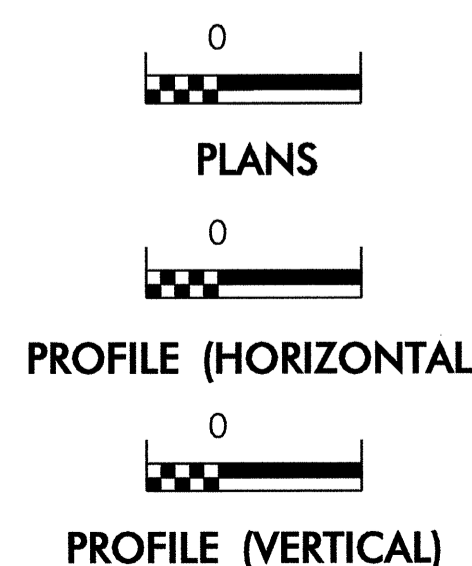


**THIS PROJECT CONTAINS
 EROSION CONTROL PLANS
 FOR CLEARING AND
 GRUBBING PHASE OF
 CONSTRUCTION.**

**ENVIRONMENTALLY
 SENSITIVE AREA(S) EXIST
 ON THIS PROJECT**
*Refer To E. C. Special Provisions
 for Special Considerations.*

**THIS PROJECT HAS
 BEEN DESIGNED TO
 SENSITIVE WATERSHED
 STANDARDS.**

GRAPHIC SCALE



ROADSIDE ENVIRONMENTAL UNIT
 DIVISION OF HIGHWAYS
 STATE OF NORTH CAROLINA

Prepared In the Office of:
ROADSIDE ENVIRONMENTAL UNIT
 1 South Wilmington St.
 Raleigh, NC 27611
2006 STANDARD SPECIFICATIONS

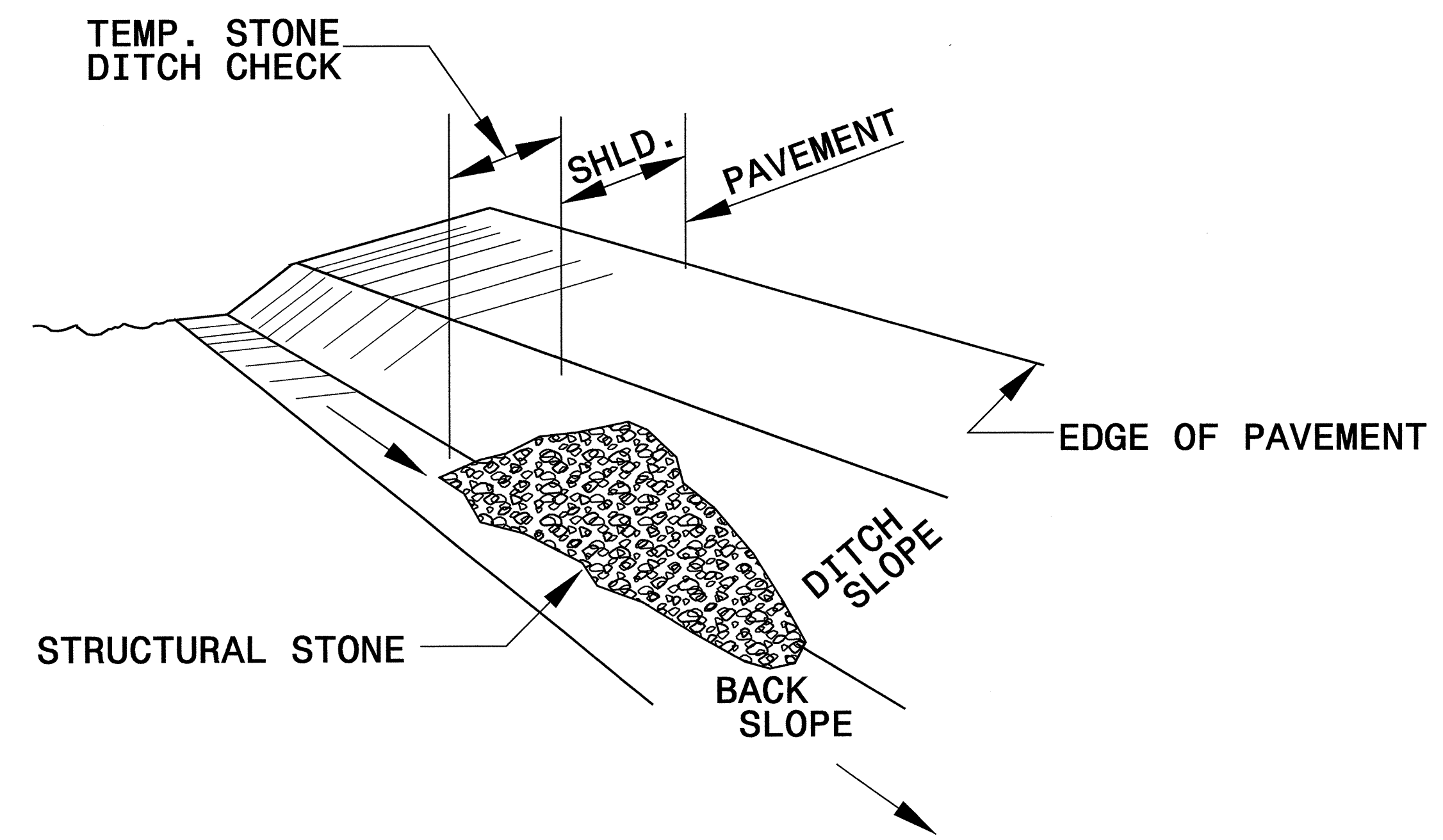
Roadway Standard Drawings

The following roadway english standards as appear in "Roadway Standard Drawings"- Roadway Design Unit - N. C. Department of Transportation - Raleigh, N. C., dated July 18, 2006 and the latest revision thereto are applicable to this project and by reference hereby are considered a part of these plans.

- | | |
|--|--|
| 1605.01 Temporary Silt Fence | 1622.01 Temporary Berms and Slope Drains |
| 1606.01 Special Sediment Control Fence | 1632.03 Rock Inlet Sediment Trap Type C |
| 1607.01 Gravel Construction Entrance | 1633.01 Temporary Rock Silt Check Type A |

PROJECT REFERENCE NO. <i>B-4021</i>	SHEET NO. <i>EC-2</i>
RW SHEET NO.	
ROADWAY DESIGN ENGINEER	HYDRAULICS ENGINEER

TEMPORARY ROCK SILT CHECK TYPE 'B' DETAIL

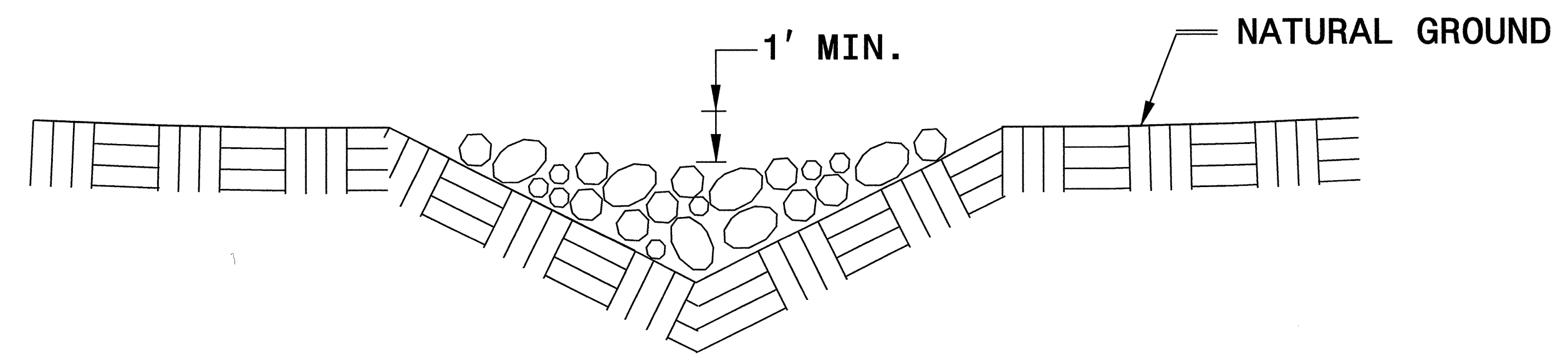


ISOMETRIC VIEW

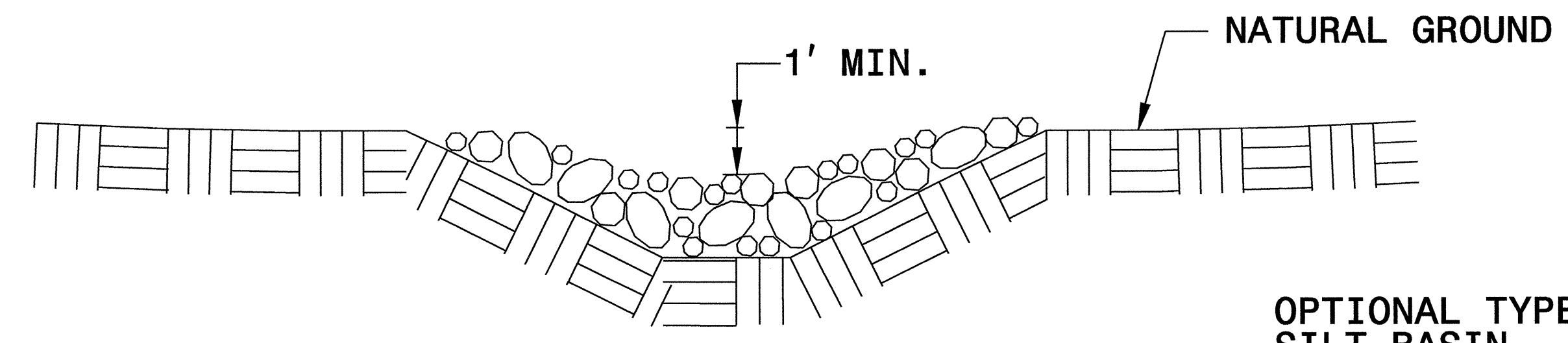
NOTES:

USE CLASS 'B' EROSION CONTROL STONE FOR STRUCTURAL STONE.

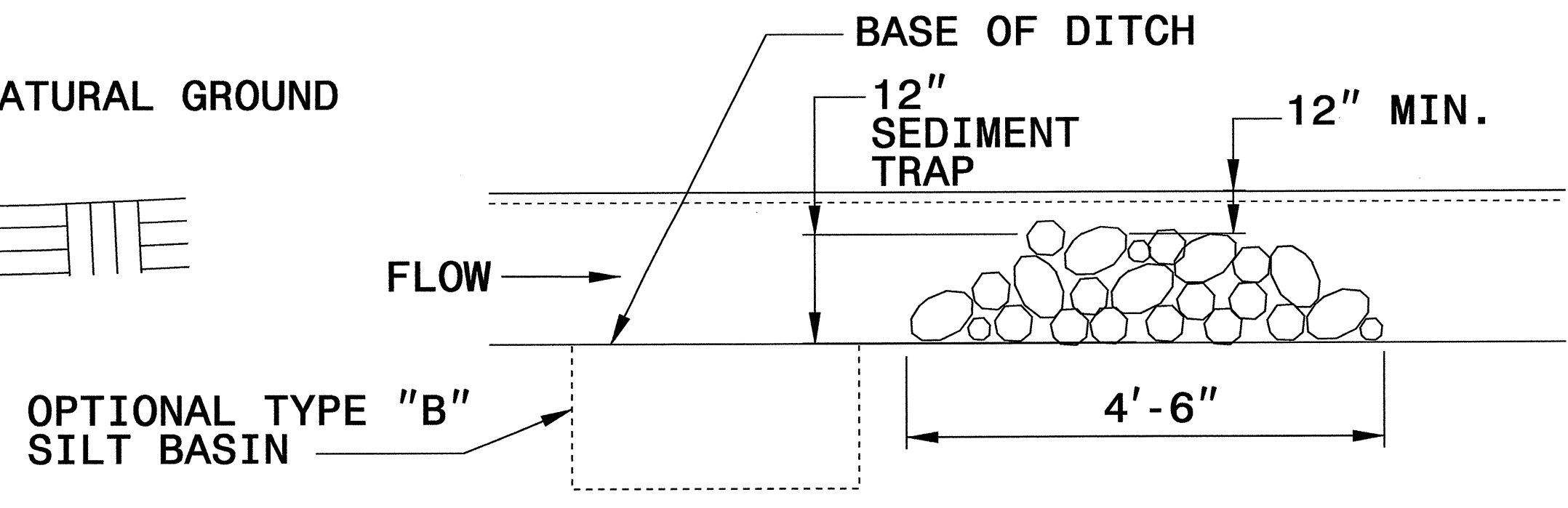
THE ENGINEER MAY DIRECT THE OPTION OF CLASS "A" STONE FOR SITES HAVING LESS THAN ONE (1) ACRE DRAINAGE AREA AND A DITCH GRADE LESS THAN 3%.



CROSS SECTION VEE DITCH



CROSS SECTION TRAPEZOIDAL DITCH



ELEVATION VIEW

8/17/99

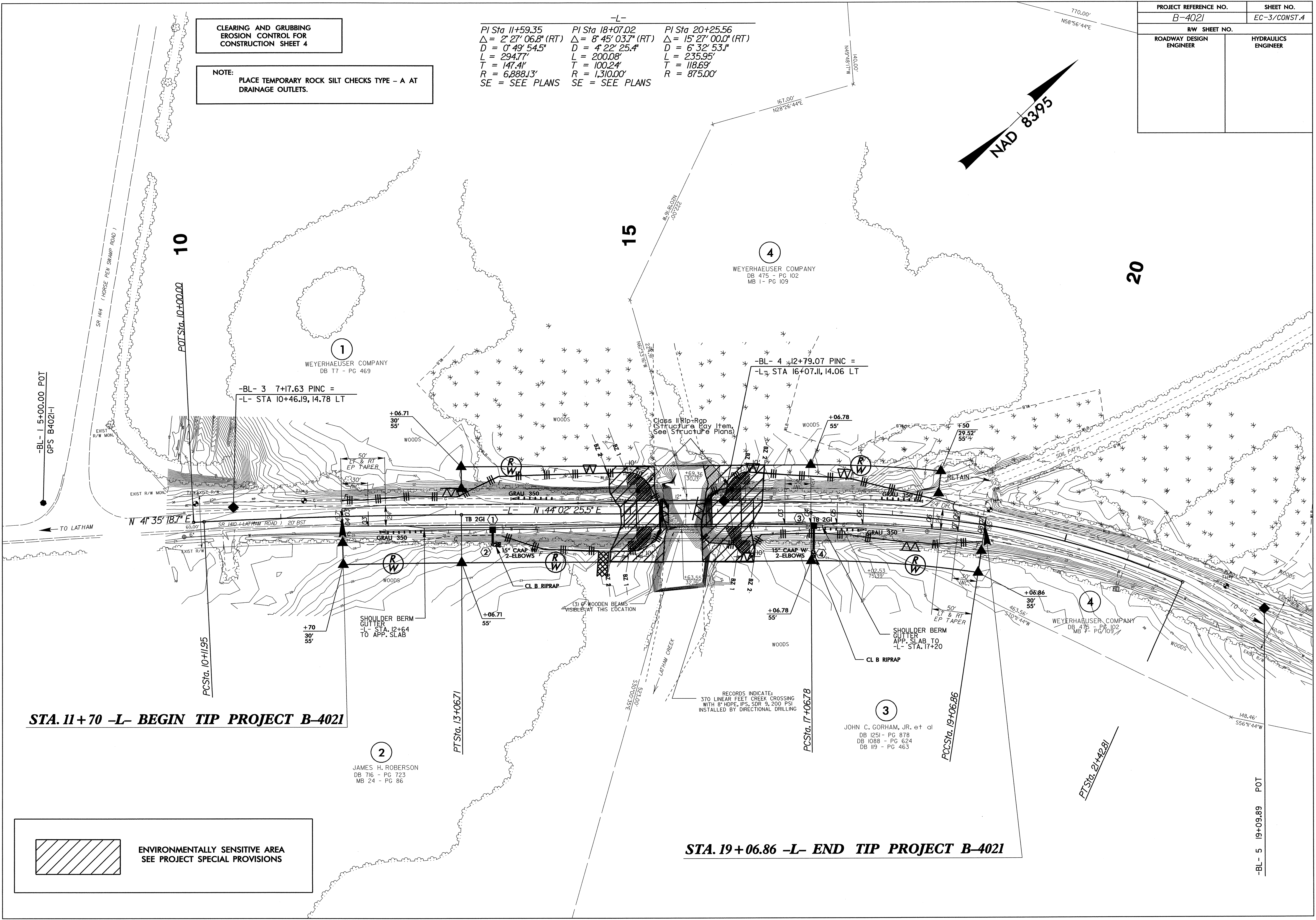
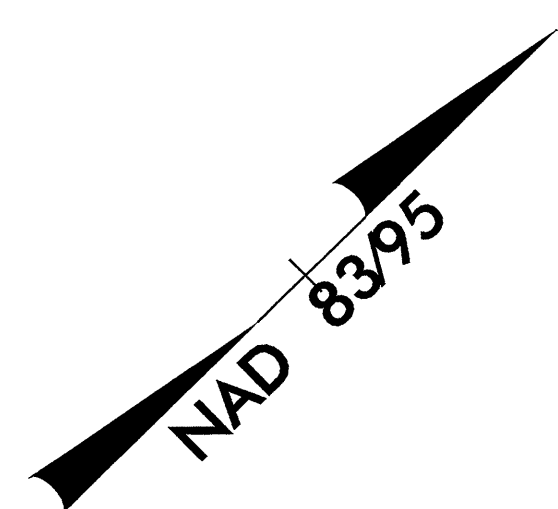
PROJECT REFERENCE NO. B-4021	SHEET NO. EC-3/CONST. A
RW SHEET NO.	
ROADWAY DESIGN ENGINEER	HYDRAULICS ENGINEER

CLEARING AND GRUBBING
EROSION CONTROL FOR
CONSTRUCTION SHEET 4

NOTE:
PLACE TEMPORARY ROCK SILT CHECKS TYPE - A AT
DRAINAGE OUTLETS.

-L-

PI Sta 11+59.35	PI Sta 18+07.02	PI Sta 20+25.56
$\Delta = 2' 27" 06.8" (RT)$	$\Delta = 8' 45" 03.7" (RT)$	$\Delta = 15' 27" 00.0" (RT)$
$D = 0' 49' 54.5"$	$D = 4' 22' 25.4"$	$D = 6' 32' 53.1"$
$L = 294.77'$	$L = 200.08'$	$L = 235.95'$
$T = 147.41'$	$T = 100.24'$	$T = 118.69'$
$R = 6,888.13'$	$R = 1,310.00'$	$R = 875.00'$
SE = SEE PLANS	SE = SEE PLANS	



STA. 11+70 -L- BEGIN TIP PROJECT B-4021

STA. 19+06.86 -L- END TIP PROJECT B-4021

 ENVIRONMENTALLY SENSITIVE AREA
SEE PROJECT SPECIAL PROVISIONS

-BL- 5 19+09.89 POT

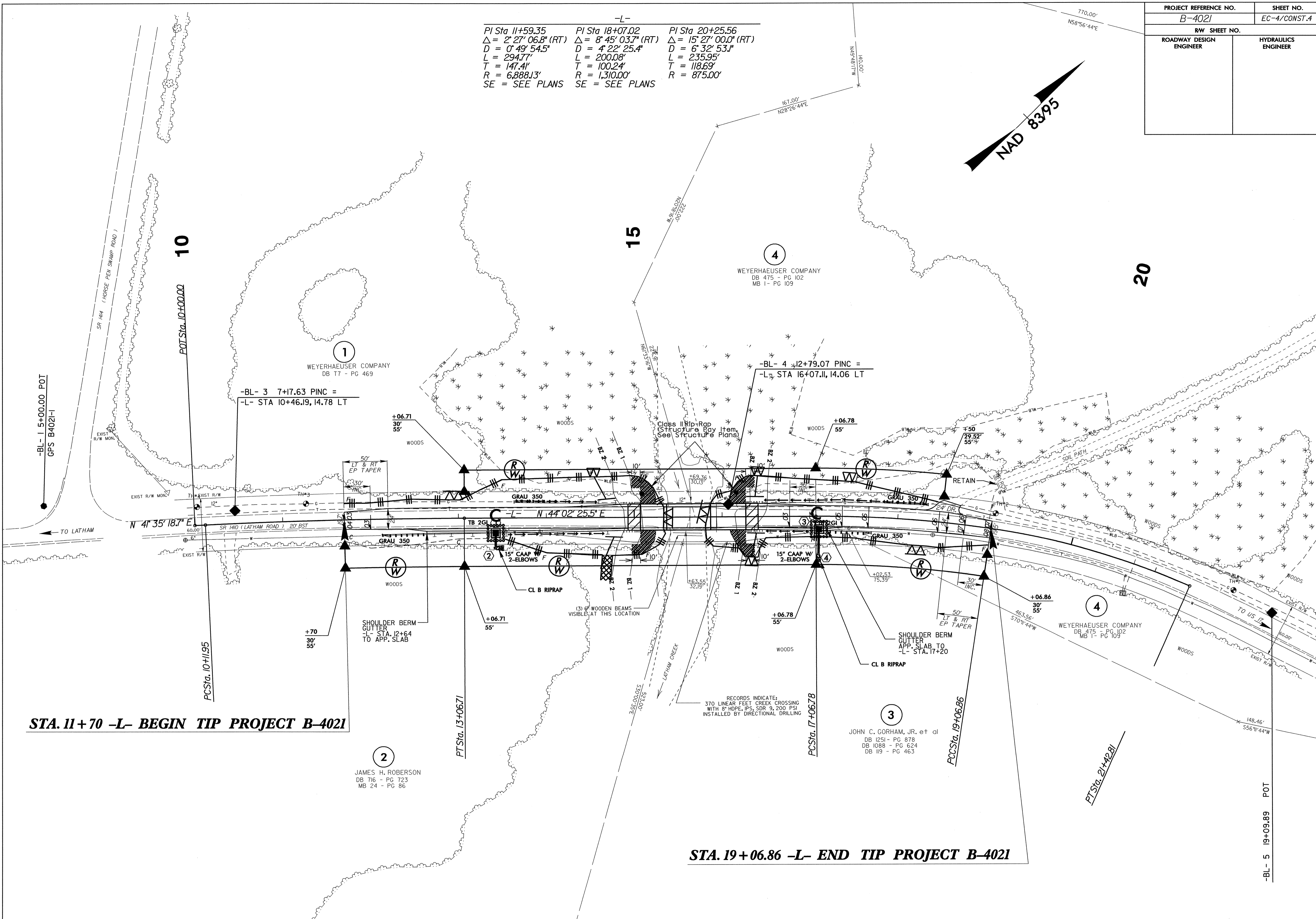
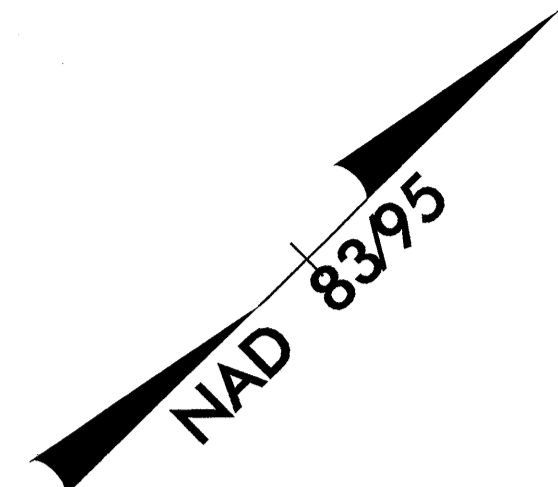
8/17/99

PROJECT REFERENCE NO.		SHEET NO.	
B-4021		EC-4/CONST.4	
RW SHEET NO.			
ROADWAY DESIGN ENGINEER		HYDRAULICS ENGINEER	

-L-

PI Sta 11+59.35	PI Sta 18+07.02	PI Sta 20+25.56
$\Delta = 2' 27'' 06.8''$ (RT)	$\Delta = 8' 45'' 03.7''$ (RT)	$\Delta = 15' 27'' 00.0''$ (RT)
$D = 0' 49'' 54.5''$	$D = 4' 22'' 25.4''$	$D = 6' 32'' 53.1''$
$L = 294.77'$	$L = 200.08'$	$L = 235.95'$
$T = 147.41'$	$T = 100.24'$	$T = 118.69'$
$R = 6,888.13'$	$R = 1,310.00'$	$R = 875.00'$

SE = SEE PLANS SE = SEE PLANS



STA. 11+70 -L- BEGIN TIP PROJECT B-4021

STA. 19+06.86 -L- END TIP PROJECT B-4021

-BL- 5 19+09.89 POT