

STATE	PROJECT NO.	SHEET NO.	TOTAL SHEETS
NC	10CR.10901.16	2	6

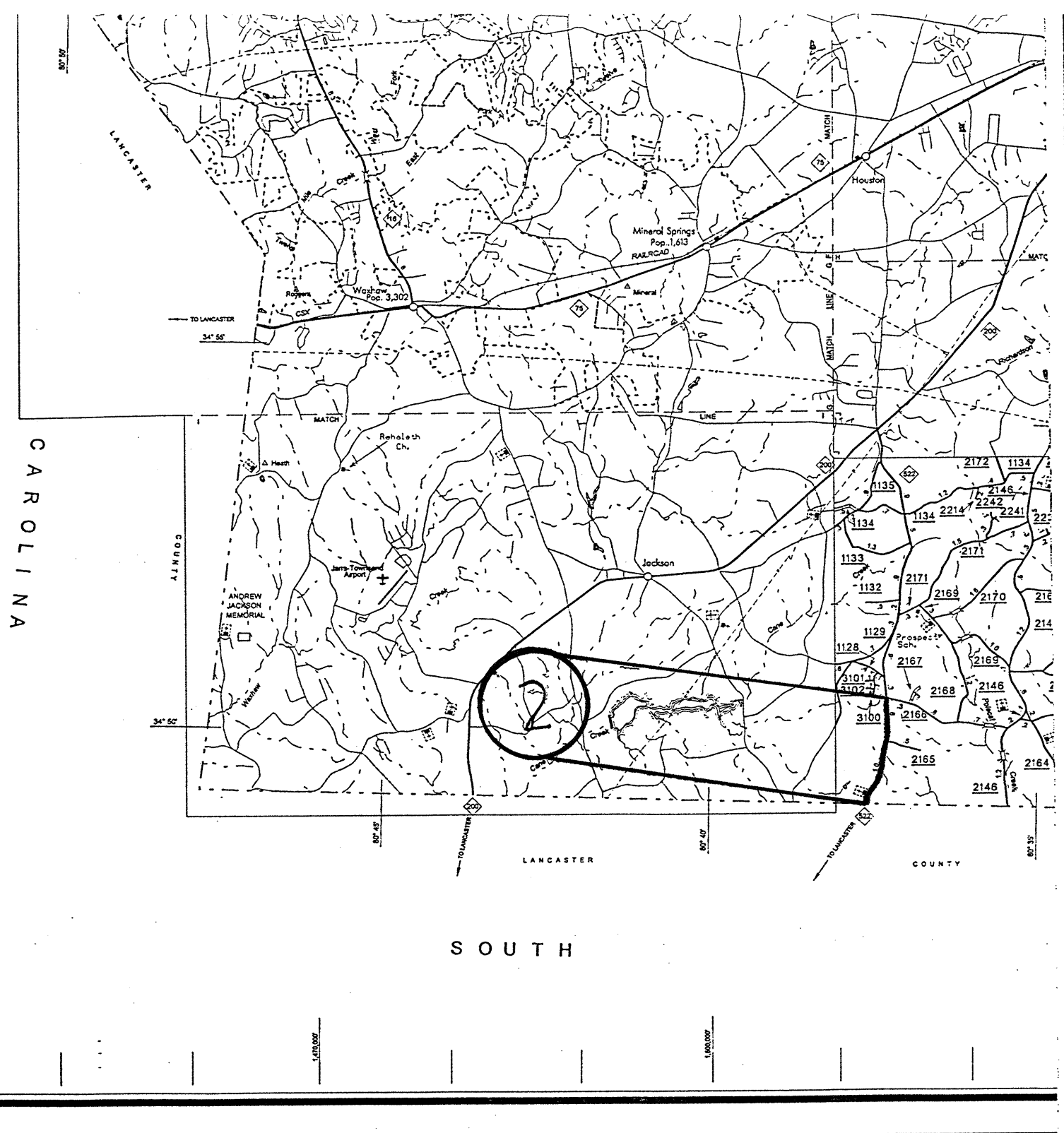
2008 UNION COUNTY CONTRACT RESURFACING



MAP #2 PRIMARY

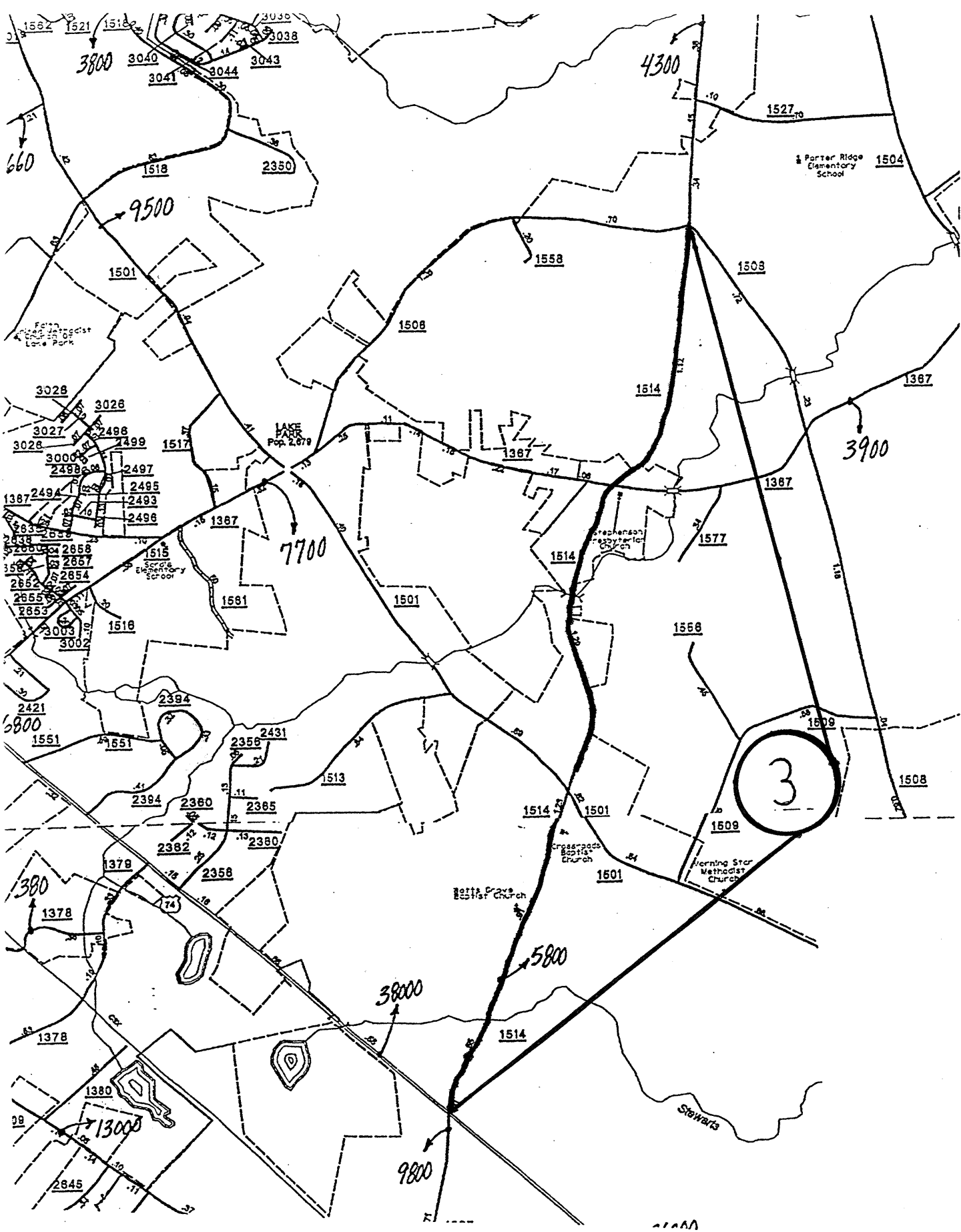
NC 522 (1.63 MILES)

FROM SR 2166 (TRINITY CHURCH RD.) TO SOUTH CAROLINA STATE LINE



STATE	PROJECT NO.	SHEET NO.	TOTAL SHEETS
NC	10CR. 20901.45	3	6

2008 UNION COUNTY CONTRACT RESURFACING



MAP #3 SECONDARY

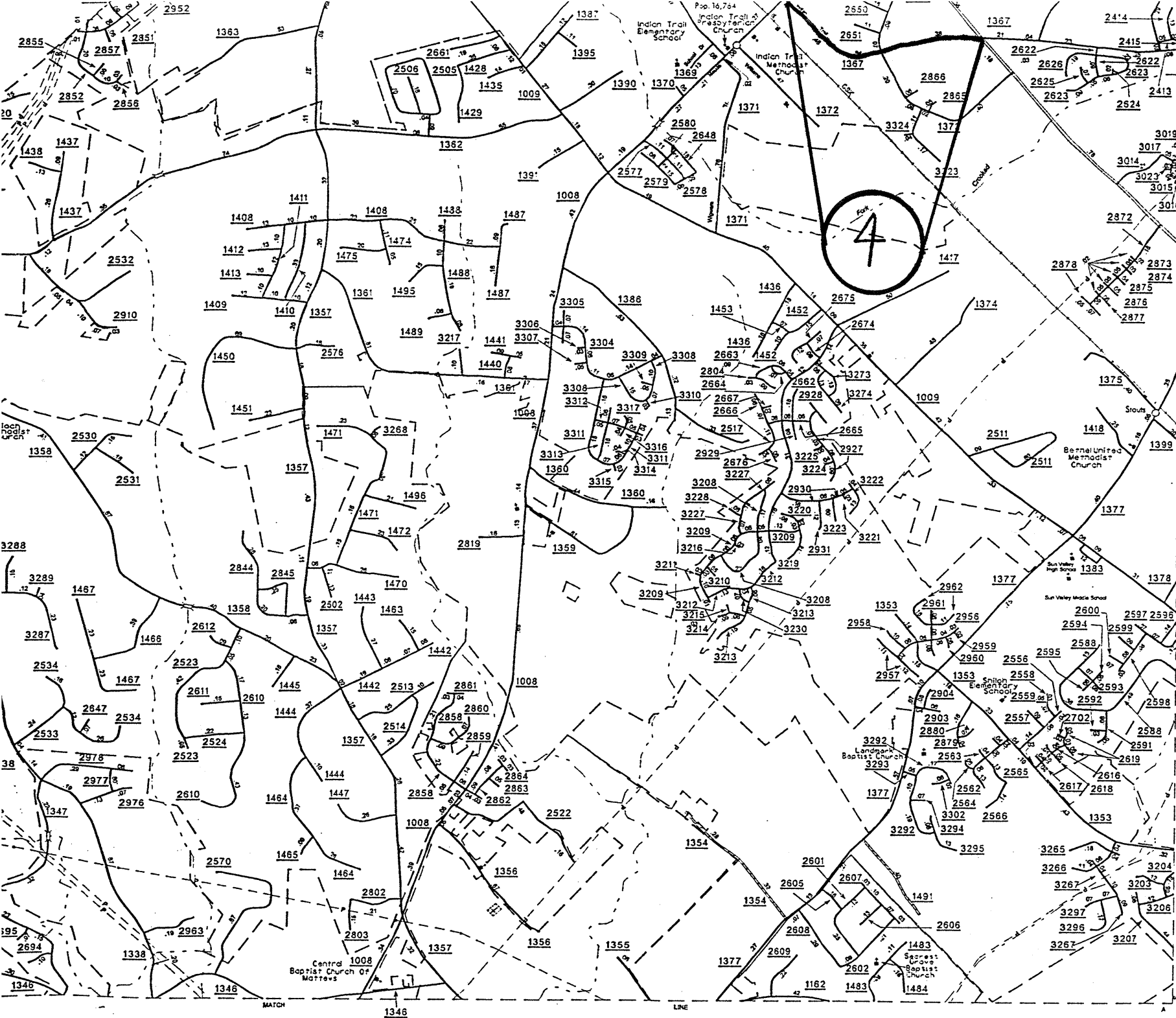
SR 1514 (ROCKY RIVER RD.) (3.47 MILES)

FROM US 74 TO SR 1508 (POPLIN RD.)

NOTE: EXCLUDE A SECTION OF SR 1514 BEGINNING SOUTH OF SR 1501 (SECRET SHORTCUT RD.) AT PAVEMENT JOINT PRECEDING NORTH FOR 1265 FEET ACROSS SR 1501 (SECRET SHORTCUT RD.) TO PAVEMENT JOINT.

STATE	PROJECT NO.	SHEET NO.	TOTAL SHEETS
NC	10CR. 20901.46	4	6

2008 UNION COUNTY CONTRACT RESURFACING

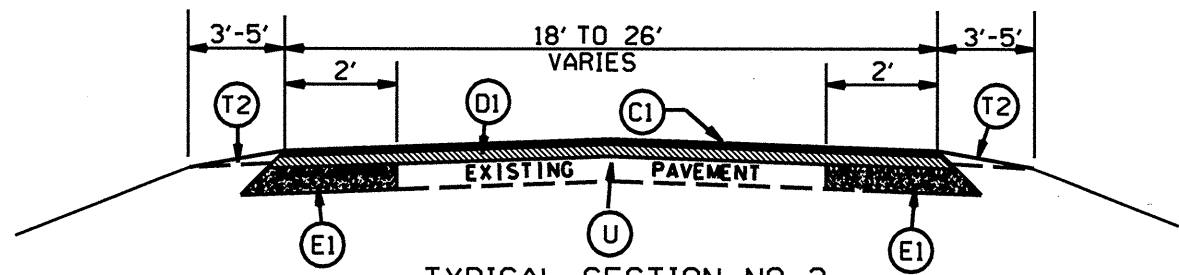


MAP #4 SECONDARY

SR 1367 (UNIONVILLE INDIAN TRAIL RD.) (.76 MILES)

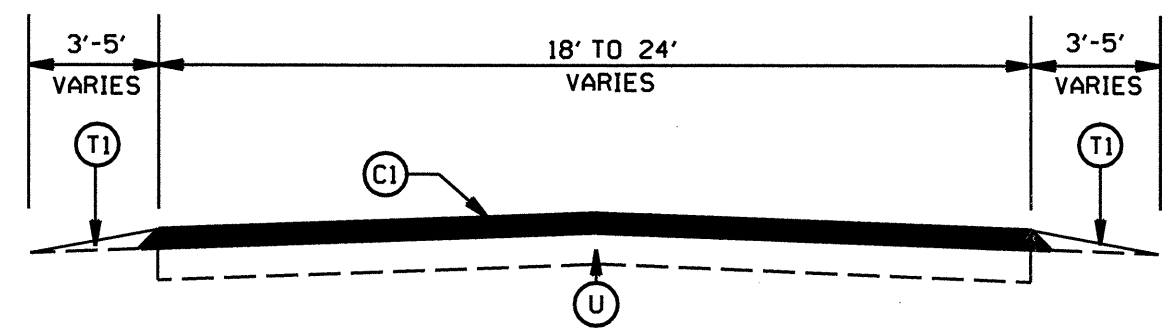
FROM US 74 EAST TO SR 1008 (WAXHAW INDIAN TRAIL RD.)

STATE	PROJECT NO.	SHEET NO.	TOTAL SHEETS
N.C.	OCR1090US	5	6
F.A. PROJECT NO.			

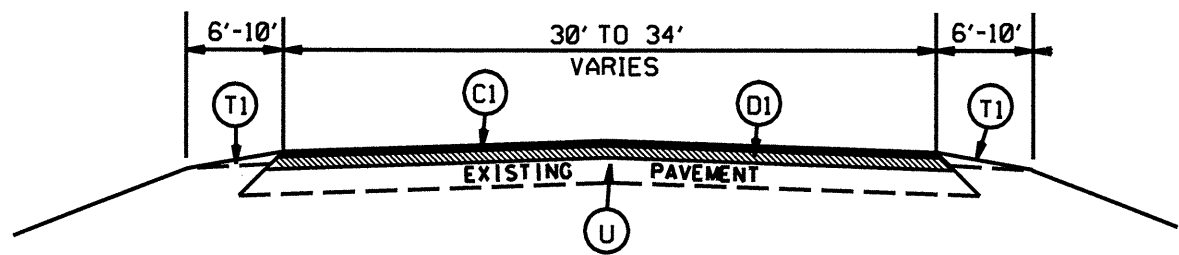


TYPICAL SECTION NO. 3
SR 1514 (ROCKY RIVER RD.)

NOTE: EXCLUDE A SECTION OF SR 1514 BEGINNING SOUTH OF SR 1501 (SECRET SHORTCUT RD) AT THE PAVEMENT JOINT AND CONTINUING NORTH FOR 1265 FT ACROSS SR 1501 (SECRET SHORTCUT RD.) TO PAVEMENT JOINT.



TYPICAL SECTION NO. 2
NC 522
SR 1367 (UNIONVILLE INDIAN TRAIL RD.)




TYPICAL SECTION NO. 1
US 601

NOTE: EXCLUDE A SECTION OF US 601 BEGINNING AT THE PAVEMENT JOINT SOUTH OF SR 1004 (LAWYERS RD.) AND CONTINUE NORTH FOR 1350 FT TO THE NEXT PAVEMENT JOINT.

PAVEMENT SCHEDULE

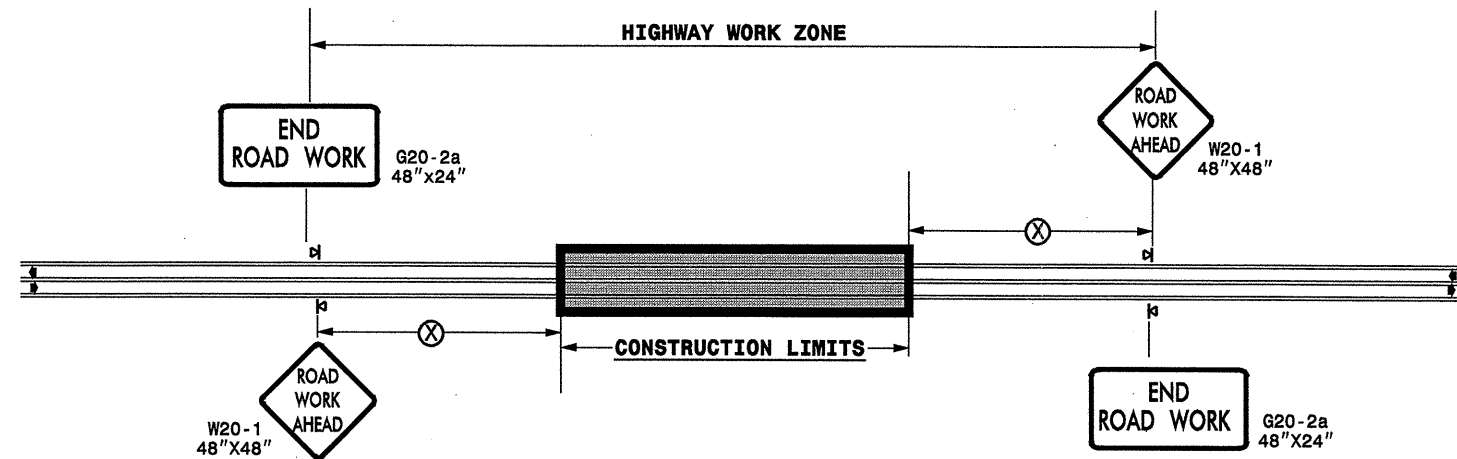
(C1)	PROP. APPROX. 1.5" ASPHALT CONC. SURFACE COURSE, TYPE S9.5C, AT AN AVERAGE RATE OF 168 LBS. PER SQ. YD.
(D1)	PROP. APPROX. 2.5" ASPHALT CONC. INTERMEDIATE COURSE, TYPE I19.0C, AT AN AVG. RATE OF 285 LBS. PER SQ. YD.
(E1)	PROP. APPROX. 5" ASPHALT CONC. BASE COURSE, TYPE B25.0C, AT AN AVERAGE RATE OF 570 LBS. PER SQ. YD.
(T1)	SHOULDER RECONSTRUCTION
(T2)	SHOULDER CONSTRUCTION
(U)	EXISTING PAVEMENT

UNION COUNTY
RESURFACING



SCALE	1"=50'	REVISIONS
DATE	12-11-07	
DWG. BY	SGB	
DESIGN BY	SGB	
APPROVED	JWU	

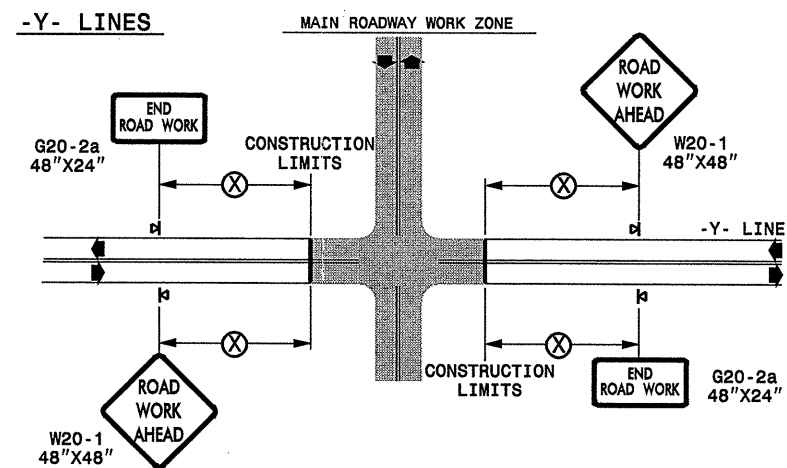
TWO-WAY UNDIVIDED ** (L-LINES)



POSTED SPEED LIMIT (M.P.H.)	RECOMMENDED MINIMUM SIGN SPACING
≤ 50	500'
≥ 55	1000'

STATE OF NORTH CAROLINA
DEPT. OF TRANSPORTATION
DIVISION OF HIGHWAYS
RALEIGH, N.C.

ROADWAYS INTERSECTING ALONG 2 WAY UNDIVIDED WORK ZONE (Y-LINES)



GENERAL NOTES

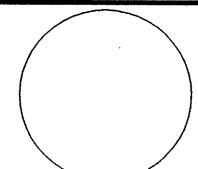

- USE FLUORESCENT ORANGE SHEETING (TYPE VII OR HIGHER) ON ALL ADVANCED WORK ZONE SIGNS.
- DO NOT INSTALL ADVANCE WARNING SIGNS MORE THAN 3 DAYS PRIOR TO BEGINNING OF WORK.
- ALL SIGN SPACING DIMENSIONS ARE APPROXIMATE, FIELD ADJUST AS NECESSARY OR AS DIRECTED.
- USE PORTABLE WORK ZONE SIGNS ONLY WITH PORTABLE WORK ZONE SIGN STANDS SPECIFICALLY DESIGNED FOR ONE ANOTHER. PORTABLE WORK ZONE SIGNS MAY BE ROLL UP OR APPROVED COMPOSITE.
- PROVIDE PORTABLE WORK ZONE SIGN STANDS, PORTABLE SIGNS AND SIGN SHEETING WHICH ARE LISTED ON THE NORTH CAROLINA DEPARTMENT OF TRANSPORTATION'S APPROVED PRODUCT LIST OR ACCEPTED AS TRAFFIC QUALIFIED BY THE TRAFFIC CONTROL UNIT.
- ** TWO-WAY UNDIVIDED ADVANCE WARNING SIGN CONFIGURATION MAY BE USED ON URBAN MULTI-LANE FACILITIES WHERE CONDITIONS LIMIT THE USE OF DUAL MOUNTED SIGNS AS DETERMINED BY THE ENGINEER.

LEGEND

- ◀ PORTABLE SIGN
- ➡ DIRECTION OF TRAFFIC FLOW

SHEET 1 OF 1

DETAIL DRAWING
FOR TWO-WAY UNDIVIDED
WORK ZONE WARNING SIGNS

APPROVED: _____ DATE: _____	DETAIL DRAWING FOR TWO-WAY UNDIVIDED ADVANCED WORK ZONE WARNING SIGNS		SCALE: NONE	
SEAL 			DATE: _____	REVISIONS 7-98 10/01 10-98 03/04 01/01 11/04
	DWG. BY: _____			
	DESIGN BY: _____	REVIEWED BY: _____		
	REVIEWED BY: _____	GSD FILE		

04-JAN-2008 17:54
 \\DOT\DFSROOT\GROUPS-WZ\TCCC\design\group\resurfacing\resurfacing2007\div0\c202004_10cr109015etc_union_us60letc\c202004_10cr109015etc_2wayundivurbfrwys\july2006.dgn
 pseymore AT WZTCC237502