

TIP PROJECT: B-4254

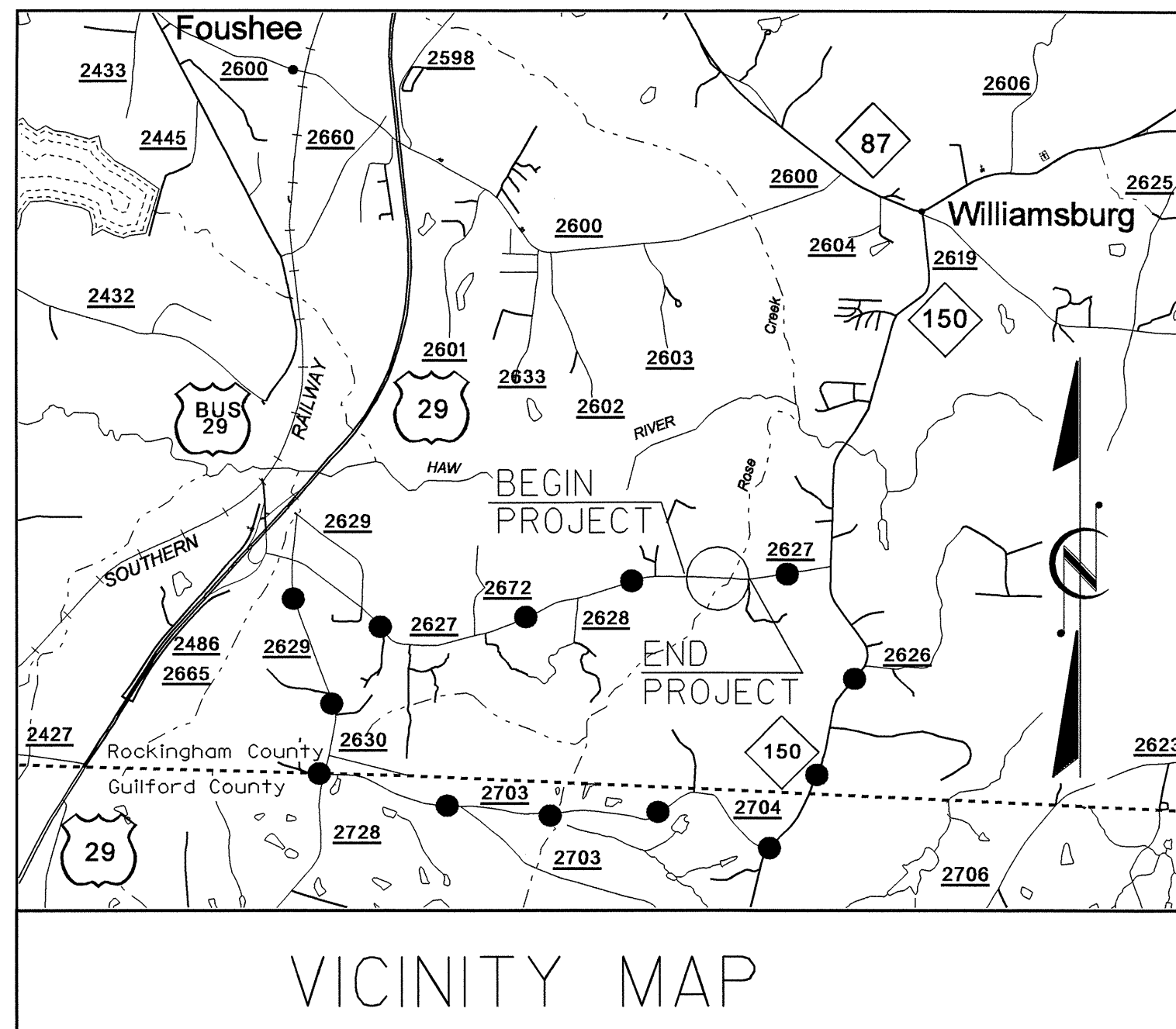
T.I.P. NO.	SHEET NO.
B-4254	UO-1

STATE OF NORTH CAROLINA
DIVISION OF HIGHWAYS

**UTILITY BY OTHERS PLANS
ROCKINGHAM COUNTY**

LOCATION: BRIDGE NO.89 OVER ROSE CREEK ON SR 2627 (CANDY CREEK ROAD)

TYPE OF WORK: UTILITY RELOCATION



VICINITY MAP

THIS PROJECT IS NOT WITHIN ANY MUNICIPAL BOUNDARY

●●●● PROPOSED OFFSITE DETOUR

RW PLANS

BEGIN TIP PROJECT B-4254
-L- STA. 13+00.00

BEGIN BRIDGE
-L- STA. 17+50.00

SR 2627 (CANDY CREEK ROAD)

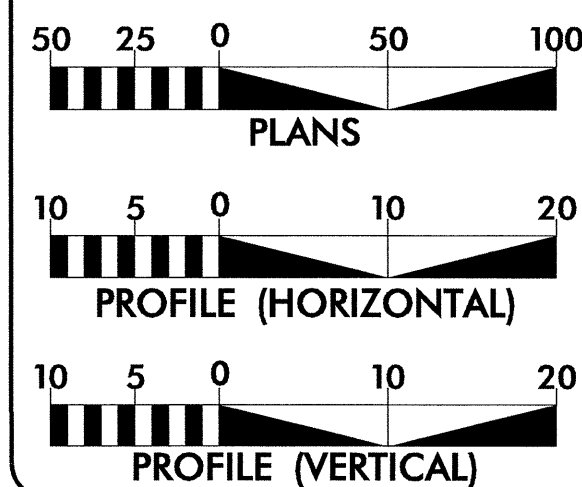
END BRIDGE
-L- STA. 18+50.00

UO-2

END TIP PROJECT B-4254
-L- STA. 22+50.00



GRAPHIC SCALES

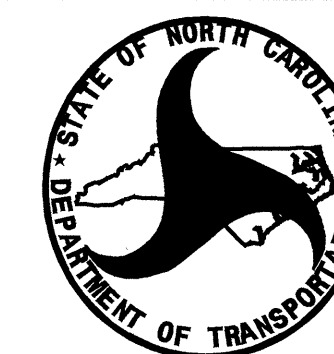


INDEX OF SHEETS

<u>SHEET NO.</u>	<u>DESCRIPTION</u>
UO-1	TITLE SHEET
UO-2	UTILITY BY OTHERS PLAN SHEETS

UTILITY OWNERS ON PROJECT

- (1) DUKE ENERGY
- (2) AT&T



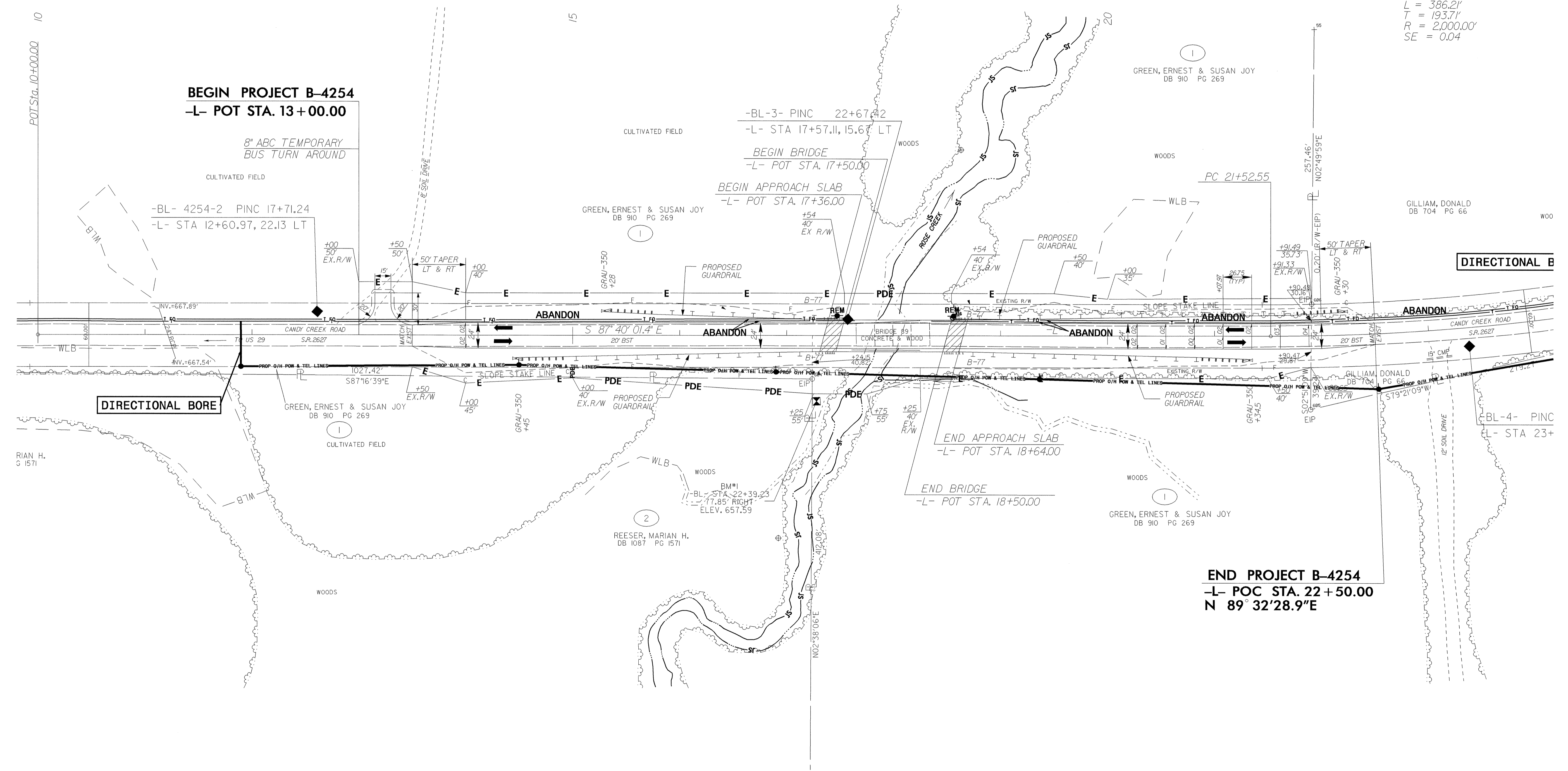
PREPARED IN THE OFFICE OF:
**DIVISION OF HIGHWAYS
DESIGN SERVICES
UTILITY SECTION**
1591 MAIL SERVICES CENTER
RALEIGH NC 27699-1591
PHONE (919) 250-4128
FAX (919) 250-4119

Roger Worthington, P.E. UTILITIES SECTION ENGINEER
Corey Bousquet, P.E. UTILITIES SQUAD LEADER PROJECT ENGINEER
Stephanie Athey UTILITIES PROJECT DESIGNER

UTILITIES BY OTHERS

NOTE:
ALL PROPOSED UTILITY WORK
SHOWN ON THIS SHEET WILL
BE DONE BY OTHERS

-L-
PI Sta. 23+46.26
 $\Delta = 11^{\circ}03'50.6"$ (LT)
 $D = 2^{\circ}51'53.2"$
 $L = 386.21'$
 $T = 193.71'$
 $R = 2,000.00'$
 $SE = 0.04$



POT Sta. 10+00.00 10

BEGIN PROJECT B-4254
-L- POT STA. 13+00.00

-BL- 4254-2 PINC 17+71.24
-L- STA 12+60.97, 22.13 LT

-BL-3- PINC 22+67.42
-L- STA 17+57.11, 15.67 LT
BEGIN BRIDGE
-L- POT STA. 17+50.00
BEGIN APPROACH SLAB
-L- POT STA. 17+36.00

PC 21+52.55

DIRECTIONAL B

DIRECTIONAL BORE

END APPROACH SLAB
-L- POT STA. 18+64.00

END BRIDGE
-L- POT STA. 18+50.00

END PROJECT B-4254
-L- POC STA. 22+50.00
N 89° 32' 28.9"E

-BL-4- PINC
-L- STA 23+

5/14/99

01-N0V-2007 11:56
\\s01\proj\114254\114254-ut_sht4-uc2.psh.dgn