

09/28/99
TIP PROJECT: B-4168
WBS: 33516
 29-OCT-2007 09:28
 C:\UTILITIES\PROJ\B4168\proj\B4168_rdy_tsh.dgn
 \$\$\$USERNAME\$\$\$

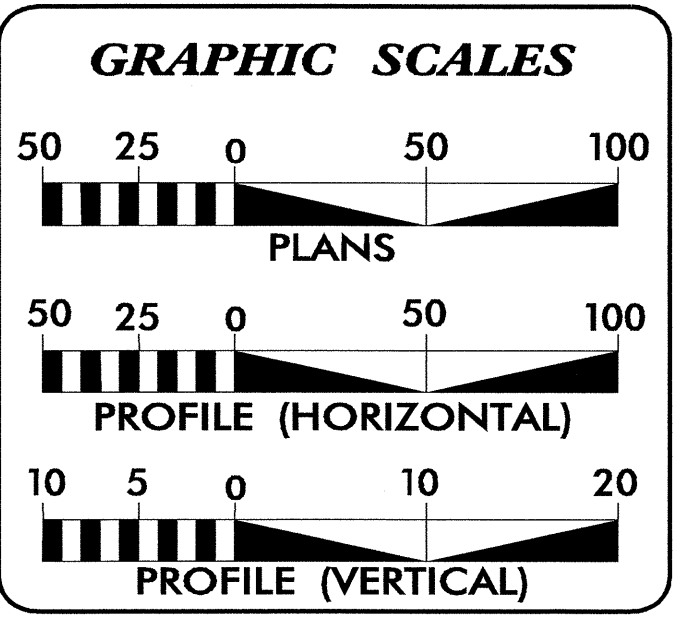
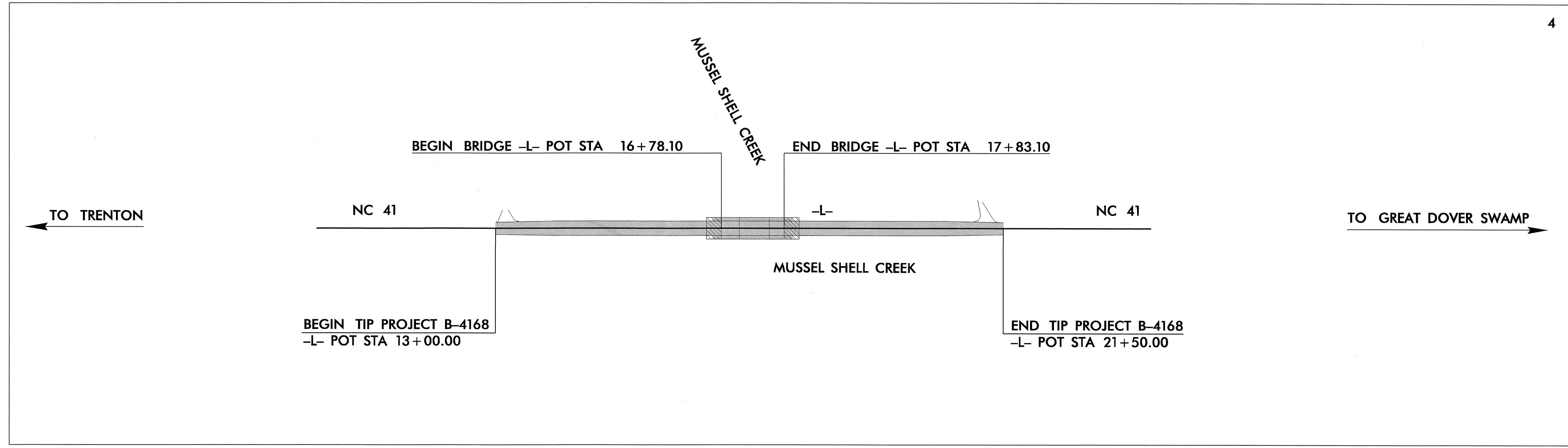
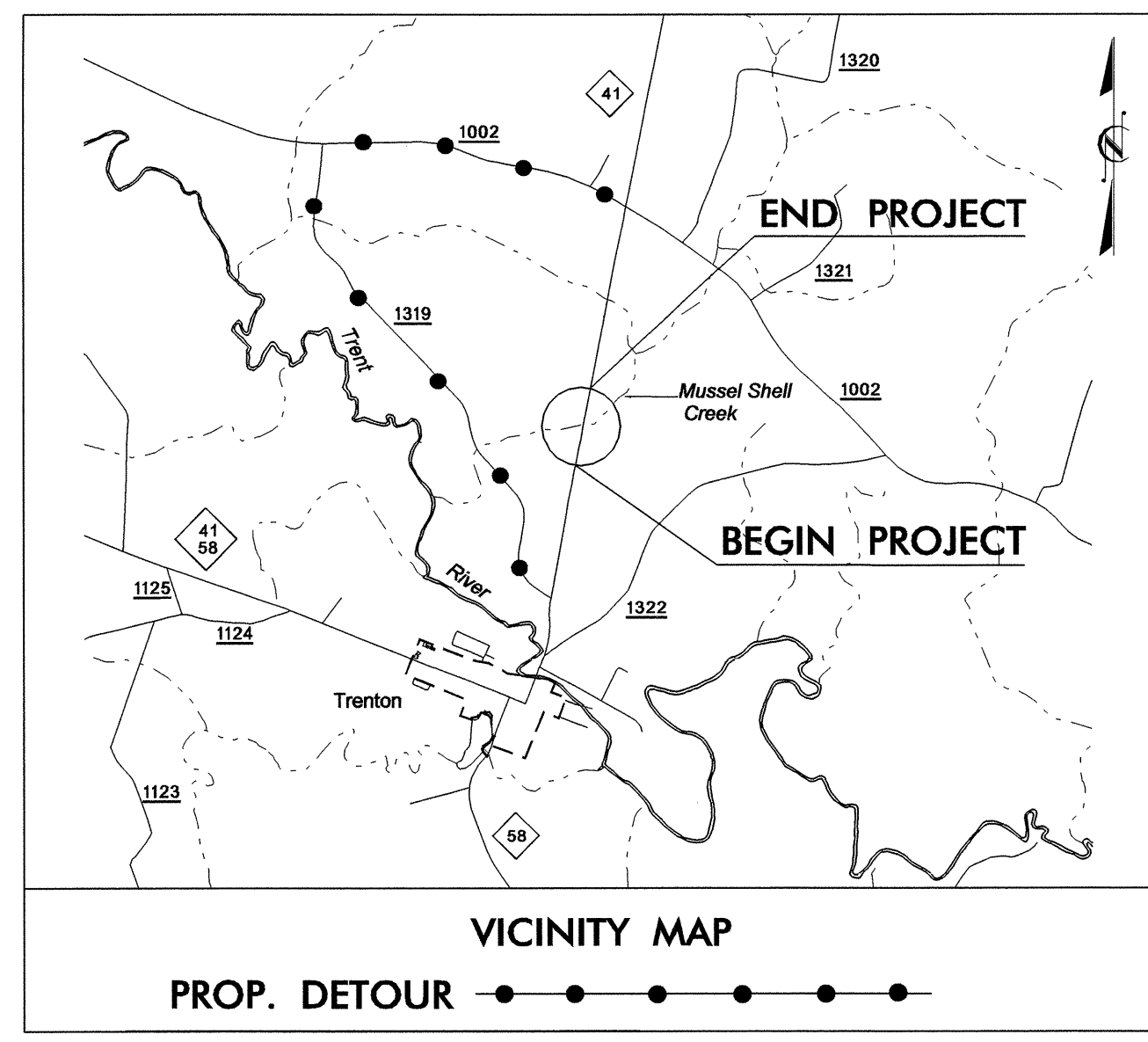
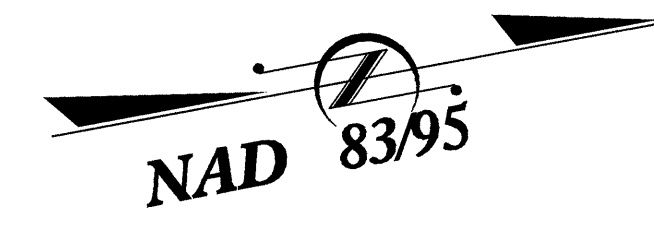
T.I.P. NO.	SHEET NO.
B-4168	UC-1

STATE OF NORTH CAROLINA
 DIVISION OF HIGHWAYS

UTILITY CONSTRUCTION PLANS
JONES COUNTY

LOCATION: BRIDGE NO. 13 OVER MUSSEL CREEK
ON NC 41

TYPE OF WORK: WATER LINE RELOCATION

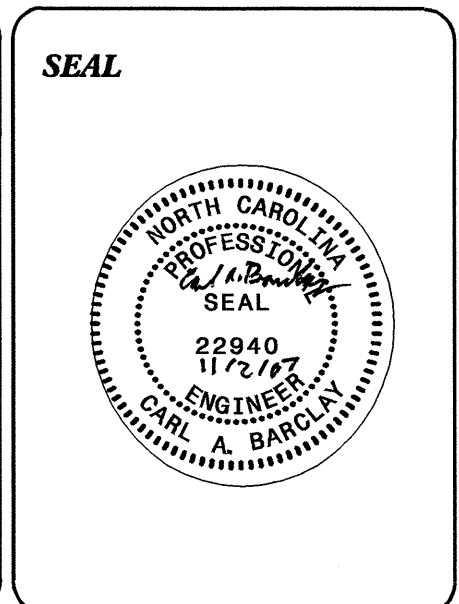


INDEX OF SHEETS

<u>SHEET NO.</u>	<u>DESCRIPTION</u>
UC-1	TITLE SHEET
UC-2	UTILITY CONSTRUCTION PLAN SHEET
UC-3	PROFILE AND DETAIL SHEET

WATER AND SEWER OWNERS ON PROJECT

(1) WATER LINE OWNED BY JONES COUNTY



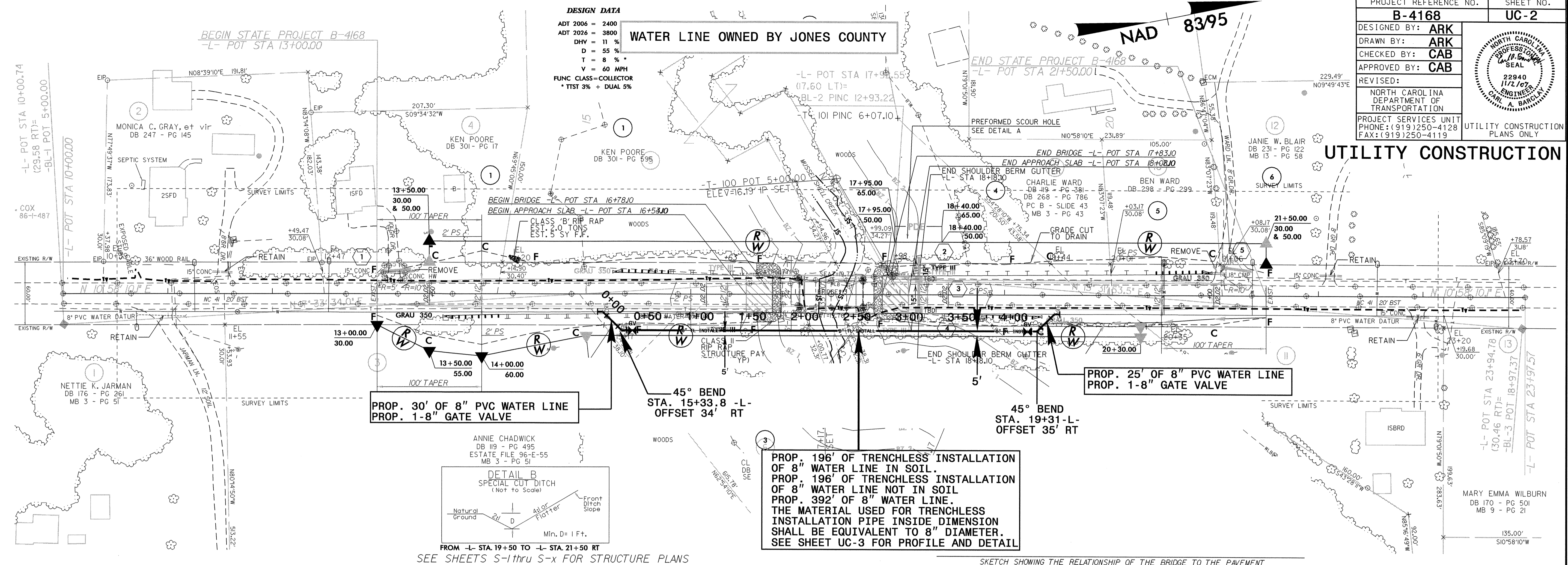
PREPARED IN THE OFFICE OF:
DIVISION OF HIGHWAYS
PROJECT SERVICES
UTILITY SECTION

1591 MAIL SERVICES CENTER
 RALEIGH NC 27699-1591
 PHONE (919) 250-4128
 FAX (919) 250-4119

Roger Worthington, P.E. UTILITIES SECTION ENGINEER
Carl Barclay, P.E. UTILITIES SQUAD LEADER PROJECT ENGINEER
Ali Kouchehi, P.E. UTILITIES PROJECT DESIGNER

5/14/99

PROJECT REFERENCE NO.	B-4168	SHEET NO.	UC-2
DESIGNED BY:	ARK		
DRAWN BY:	ARK		
CHECKED BY:	CAB		
APPROVED BY:	CAB		
REVISED:		NORTH CAROLINA DEPARTMENT OF TRANSPORTATION PROJECT SERVICES UNIT PHONE: (919) 250-4128 FAX: (919) 250-4119	
UTILITY CONSTRUCTION			

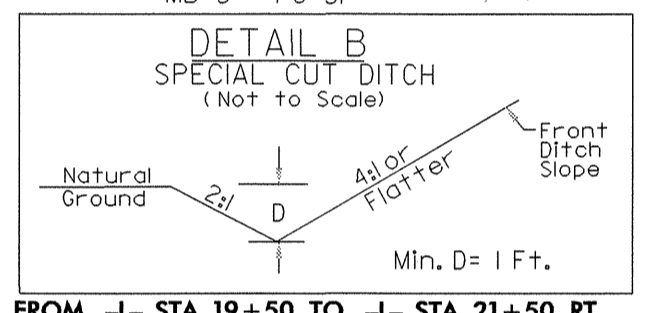


PROP. 30' OF 8" PVC WATER LINE
PROP. 1-8" GATE VALVE

45° BEND
STA. 15+33.8 -L-
OFFSET 34' RT

45° BEND
STA. 19+31-L-
OFFSET 35' RT

PROP. 196' OF TRENCHLESS INSTALLATION OF 8" WATER LINE IN SOIL.
PROP. 196' OF TRENCHLESS INSTALLATION OF 8" WATER LINE NOT IN SOIL.
PROP. 392' OF 8" WATER LINE.
THE MATERIAL USED FOR TRENCHLESS INSTALLATION PIPE INSIDE DIMENSION SHALL BE EQUIVALENT TO 8" DIAMETER.
SEE SHEET UC-3 FOR PROFILE AND DETAIL



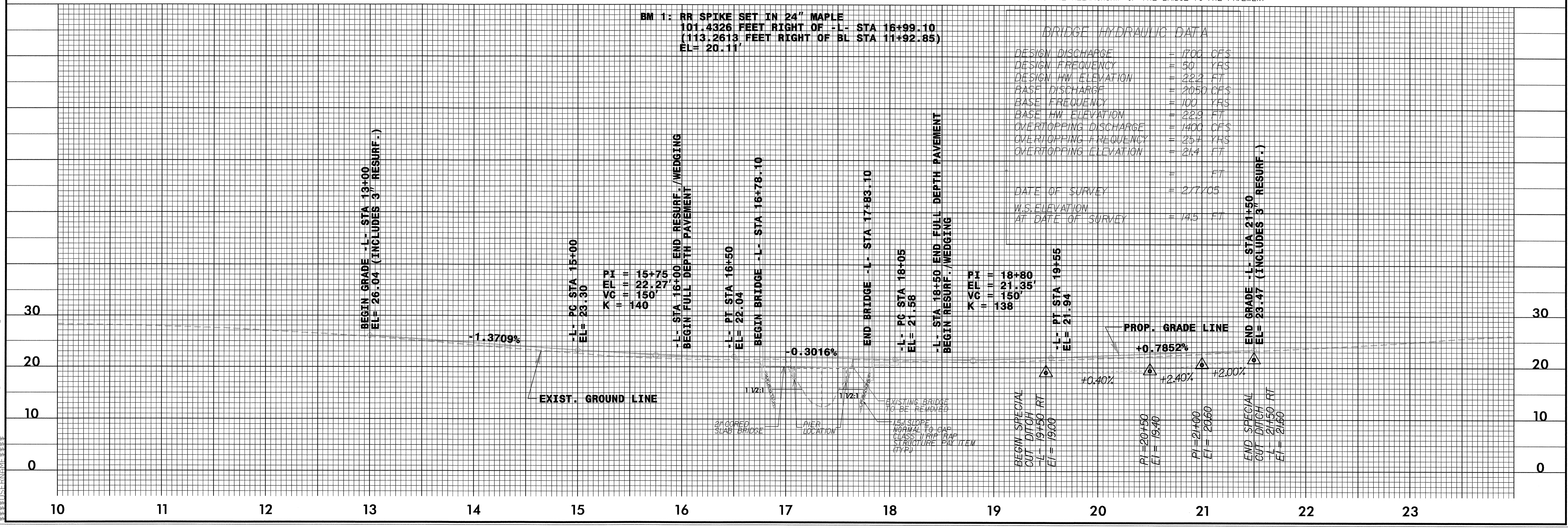
FROM -L- STA. 19+50 TO -L- STA. 21+50 RT
SEE SHEETS S-1 thru S-x FOR STRUCTURE PLANS

SKETCH SHOWING THE RELATIONSHIP OF THE BRIDGE TO THE PAVEMENT

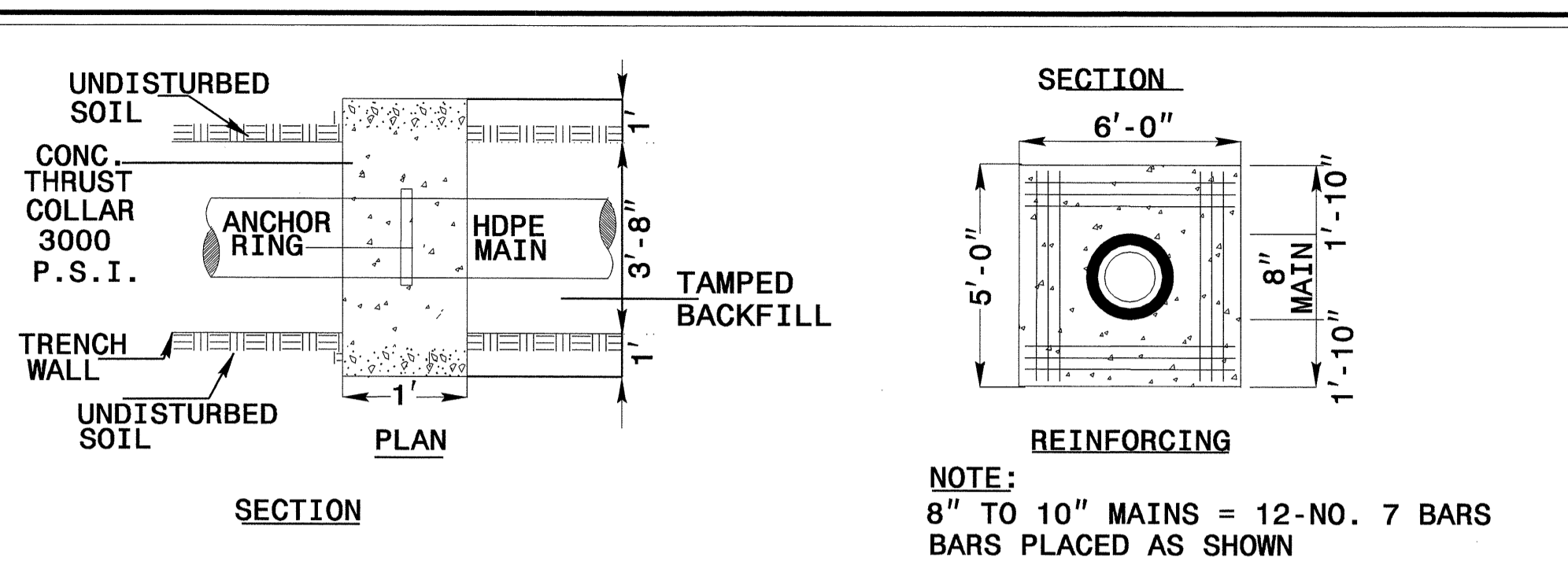
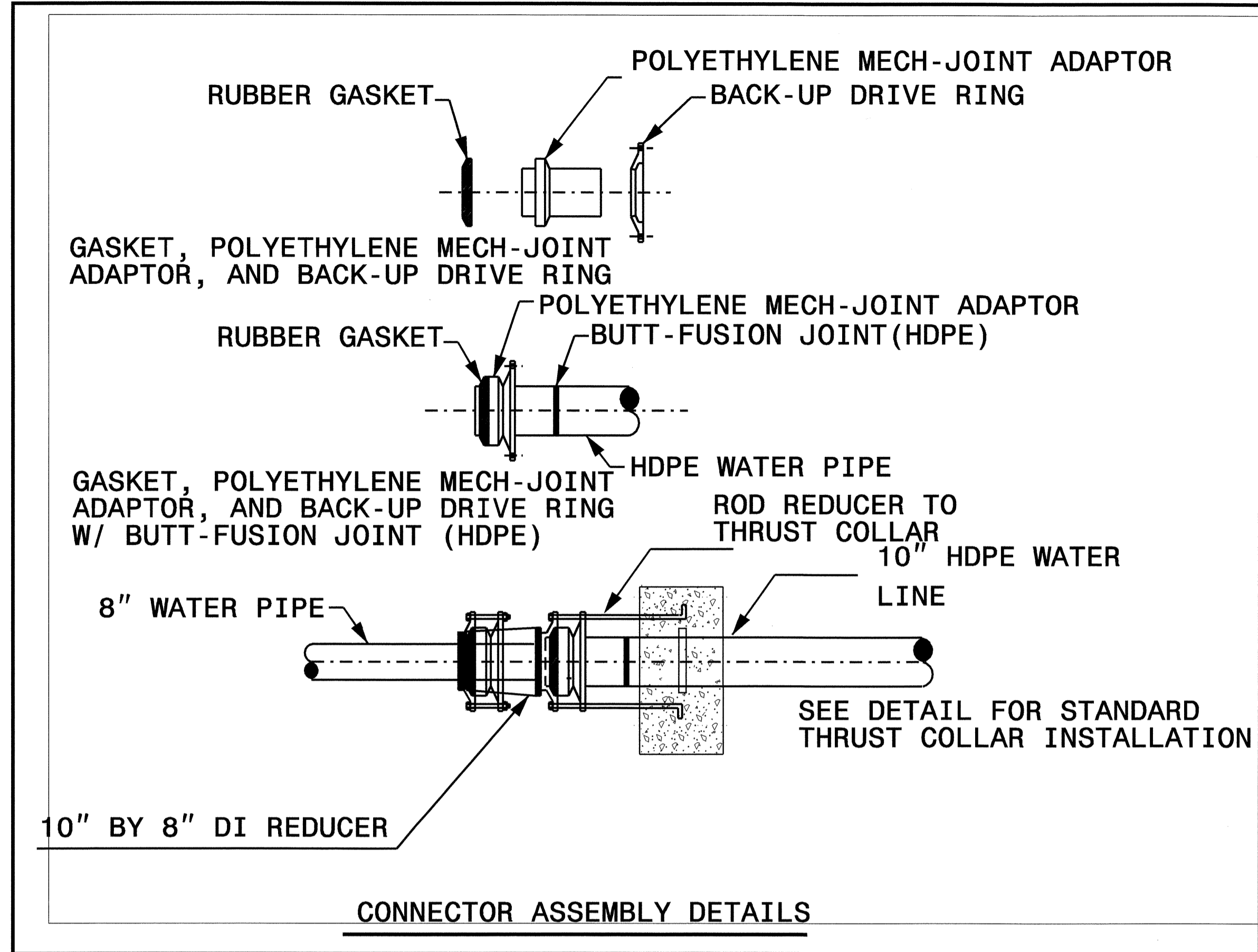
BM 1: RR SPIKE SET IN 24" MAPLE
101.4326 FEET RIGHT OF -L- STA 16+99.10
(113.2613 FEET RIGHT OF BL STA 11+92.85)
EL= 20.11'

BRIDGE HYDRAULIC DATA

DESIGN DISCHARGE	= 1700 CFS
DESIGN FREQUENCY	= 50 YRS
DESIGN HW ELEVATION	= 22.2 FT
BASE DISCHARGE	= 2050 CFS
BASE FREQUENCY	= 100 YRS
BASE HW ELEVATION	= 22.9 FT
OVERTOPPING DISCHARGE	= 1400 CFS
OVERTOPPING FREQUENCY	= 25 YRS
OVERTOPPING ELEVATION	= 21.4 FT
	= FT
DATE OF SURVEY	= 2/7/05
W.S. ELEVATION AT DATE OF SURVEY	= 14.5 FT

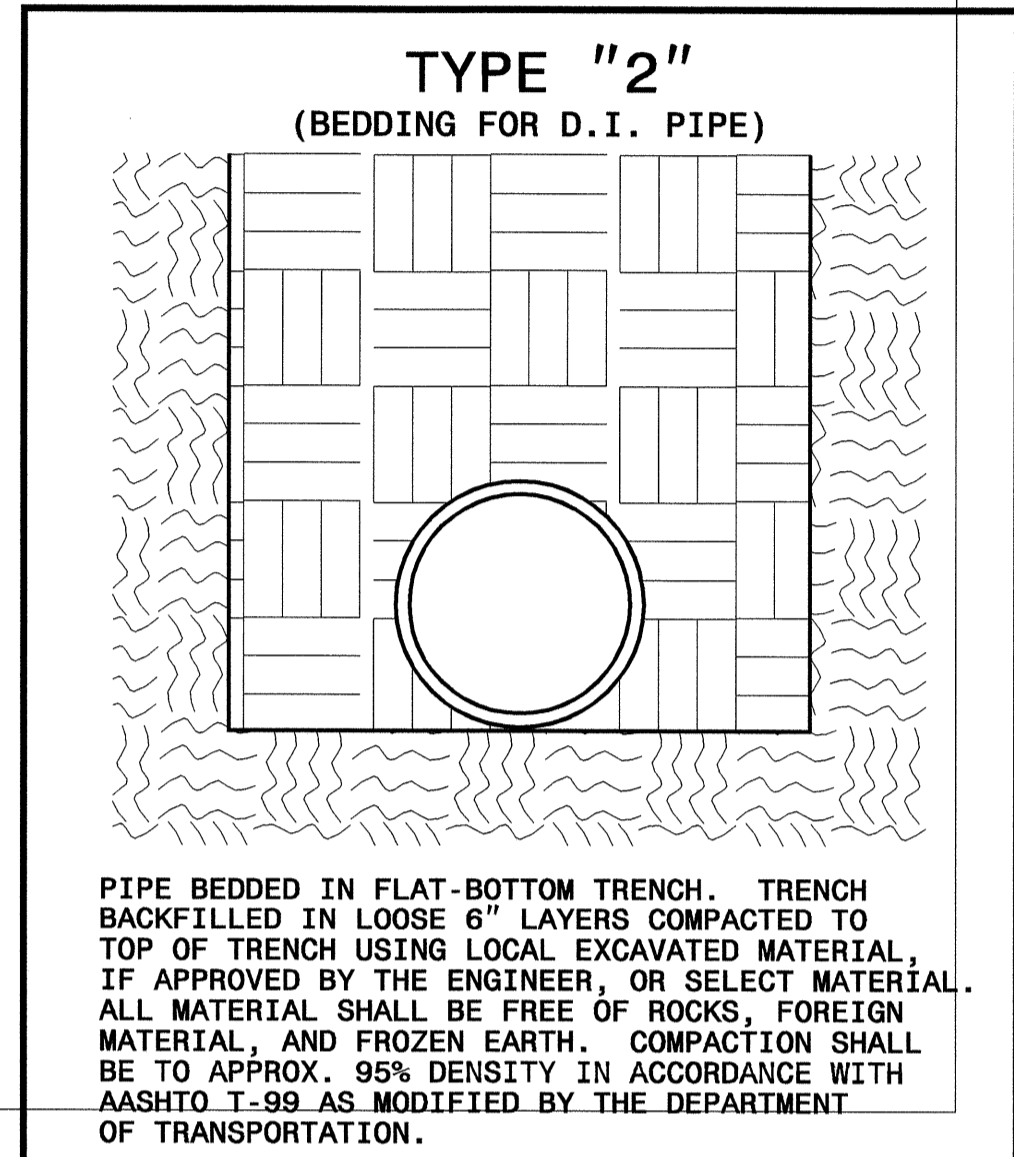


01-NOV-2007 07:44
r:\utilities\edward\psh04\168\psh04-ut-2.dgn

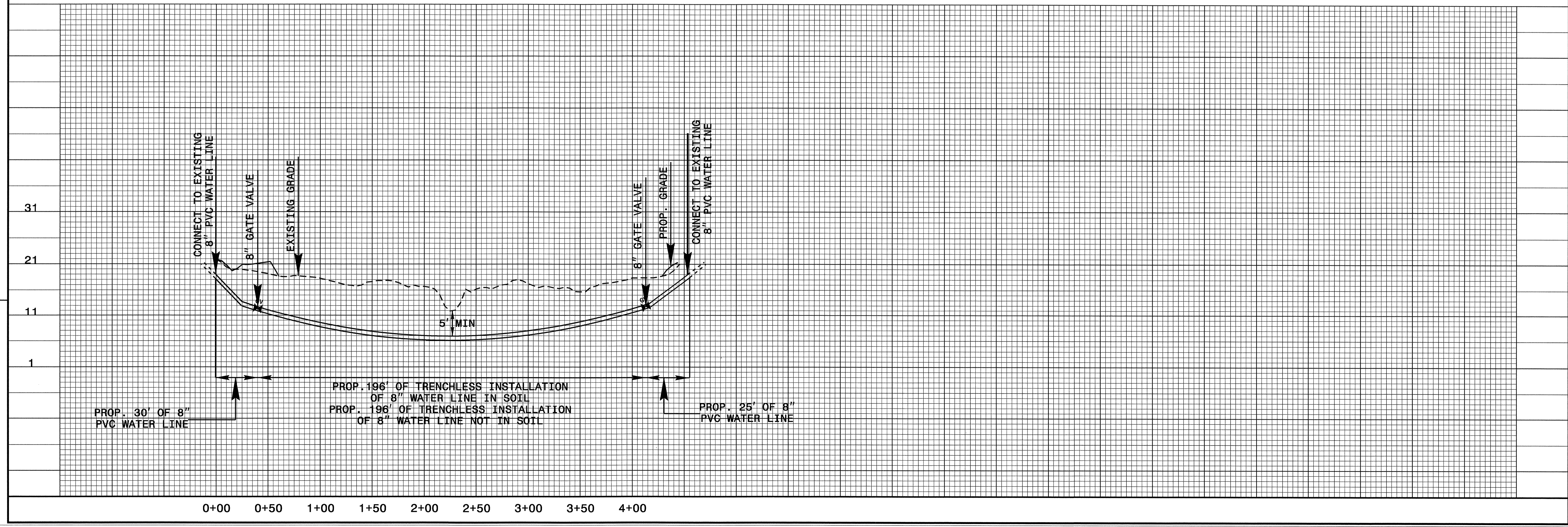


MAXIMUM TRENCH WIDTH AT TOP OF PIPE

NOMINAL PIPE SIZE (INCHES)	TRENCH WIDTH (INCHES)	NOMINAL PIPE SIZE (INCHES)	TRENCH WIDTH (INCHES)
4	28	20	44
6	30	24	48
8	32	30	54
10	34	36	60
12	36	42	66
14	38	48	72
16	40	54	78
18	42		



REVISIONS



09/08/99

T.I.P. NO.	SHEET NO.
B-4168	UO-1

STATE OF NORTH CAROLINA
DIVISION OF HIGHWAYS

UTILITY BY OTHERS PLANS
JONES COUNTY

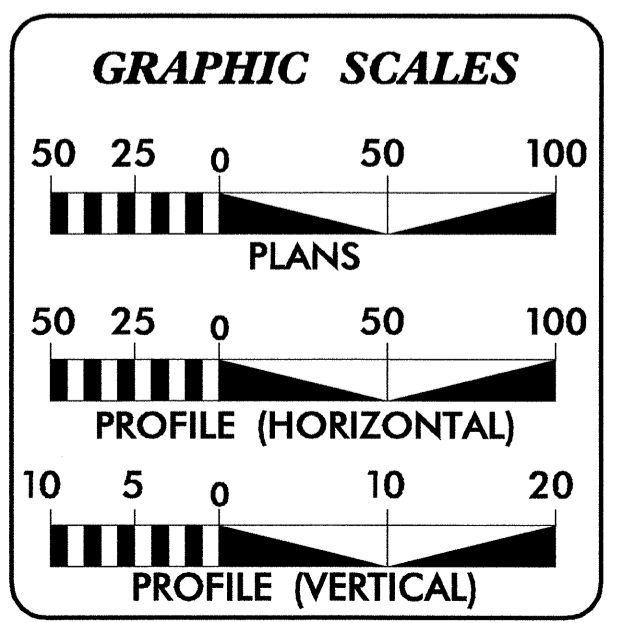
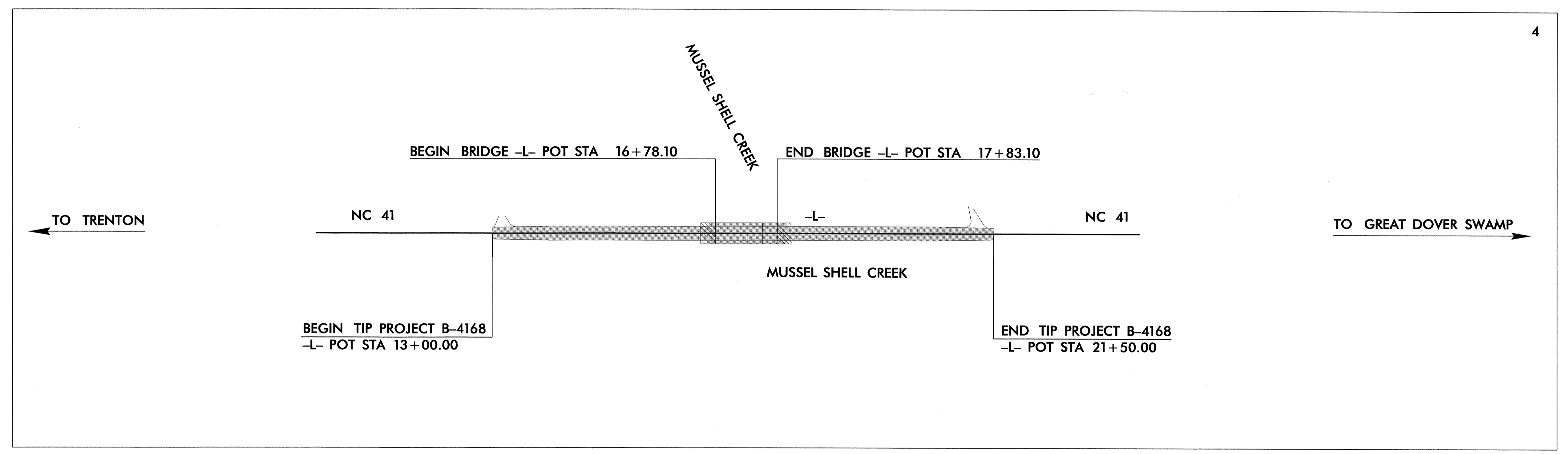
LOCATION: BRIDGE NO. 13 OVER MUSSEL SHELL CREEK ON NC 41

TYPE OF WORK: UTILITIES BY OTHERS RELOCATION



TIP PROJECT: B-4168

WBS: 33516

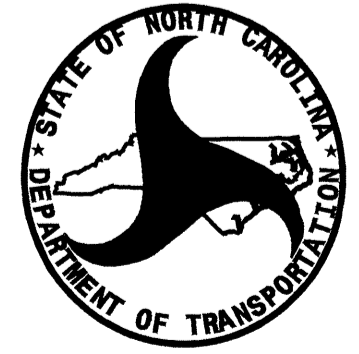


INDEX OF SHEETS

SHEET NO.	DESCRIPTION
UO-1	TITLE SHEET
UO-2	UTILITY BY OTHERS PLAN SHEET

UTILITY OWNERS ON PROJECT

(1) EMABARQ	(TELEPHONE)
-------------	-------------



PREPARED IN THE OFFICE OF:
DIVISION OF HIGHWAYS
DESIGN SERVICES
UTILITY SECTION

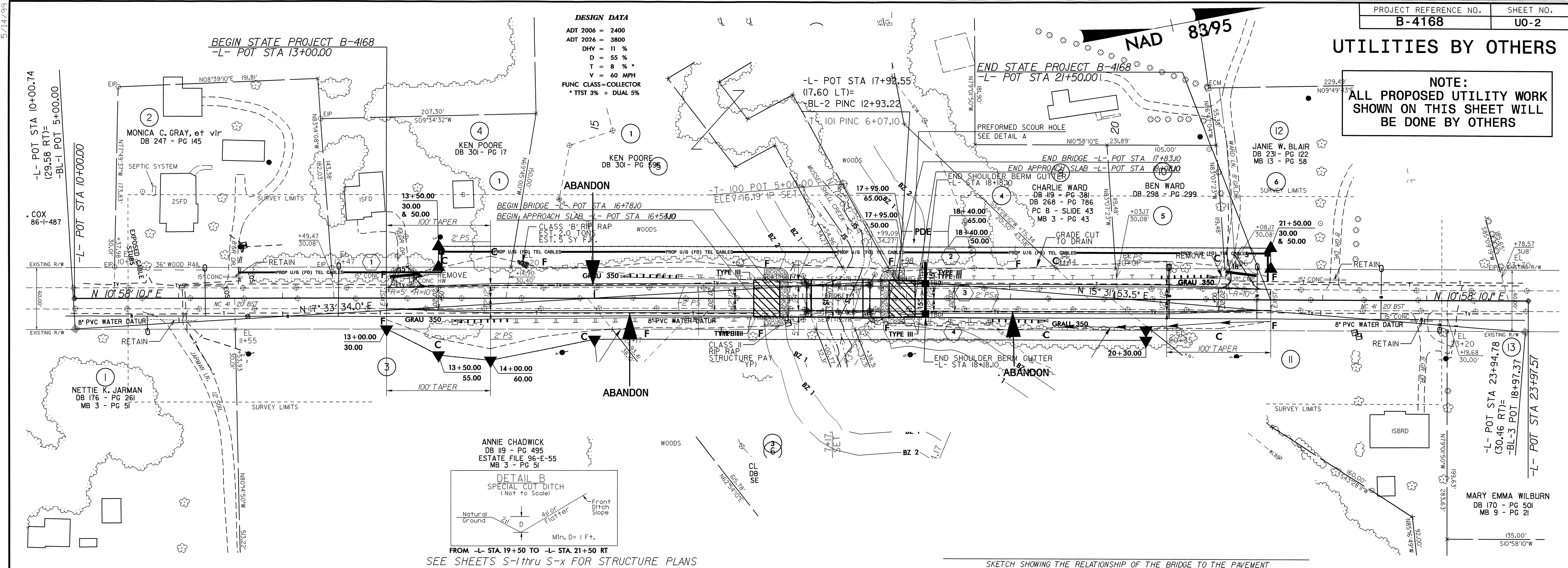
1591 MAIL SERVICES CENTER
RALEIGH NC 27699-1591
PHONE (919) 250-4128
FAX (919) 250-4119

Roger Worthington, P.E. UTILITIES SECTION ENGINEER
Carl Barclay, P.E. UTILITIES SQUAD LEADER PROJECT ENGINEER
Ali Kouchehi, P.E. UTILITIES PROJECT DESIGNER

01-NOV-2007 09:52
r:\utilities\rdy-ut\proj\b4168_rdy_tsh.dgn
\$\$\$\$\$USERNAME\$\$\$\$\$

UTILITIES BY OTHERS

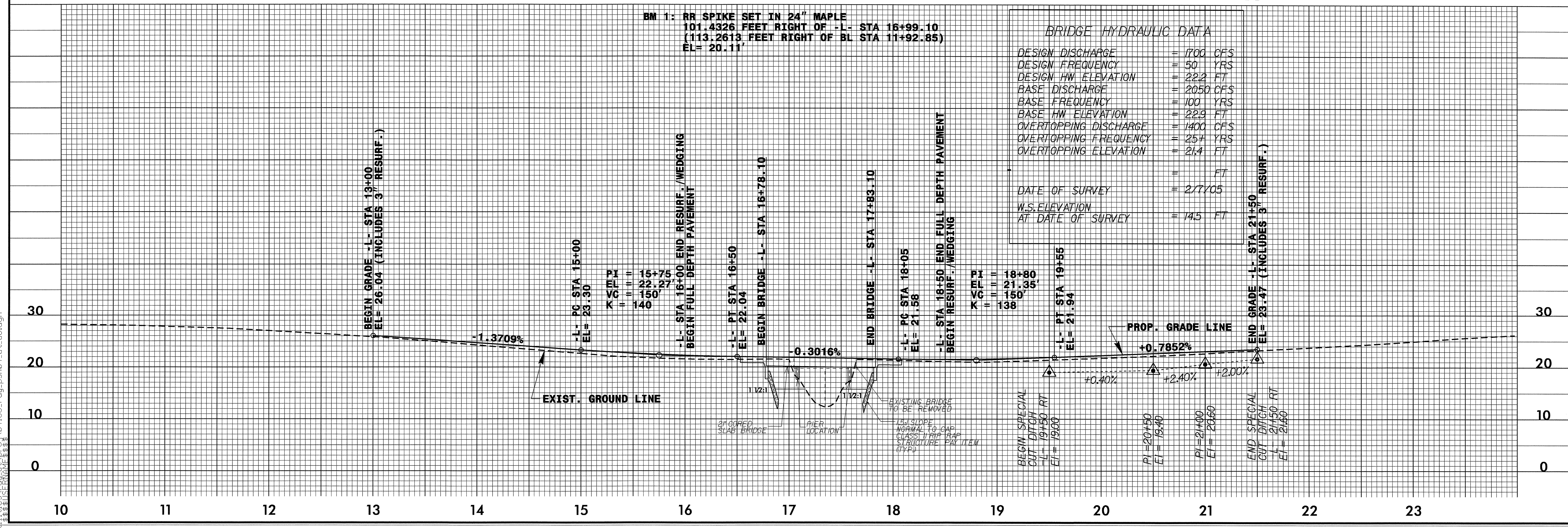
NOTE:
ALL PROPOSED UTILITY WORK
SHOWN ON THIS SHEET WILL
BE DONE BY OTHERS



BM 1: RR SPIKE SET IN 24" MAPLE
 101.4326 FEET RIGHT OF -L- STA 16+99.10
 (113.2613 FEET RIGHT OF BL STA 11+92.85)
 EL = 20.11'

BRIDGE HYDRAULIC DATA

DESIGN DISCHARGE	= 1700 CFS
DESIGN FREQUENCY	= 50 YRS
DESIGN HW ELEVATION	= 22.2 FT
BASE DISCHARGE	= 2050 CFS
BASE FREQUENCY	= 100 YRS
BASE HW ELEVATION	= 22.9 FT
OVERTOPPING DISCHARGE	= 1400 CFS
OVERTOPPING FREQUENCY	= 25+ YRS
OVERTOPPING ELEVATION	= 21.4 FT
DATE OF SURVEY	= 2/7/05
W.S. ELEVATION AT DATE OF SURVEY	= 14.5 FT



01-NOV-2007 09:49
 :\\utilities\cfd\dwg\proj\B-4168-rdy-psd\04_ut.uo.dgn
 \$\$\$US\$ENR\$