

SEE SHEET 1-A FOR INDEX OF SHEETS  
SEE SHEET 1-B FOR CONVENTIONAL SYMBOLS

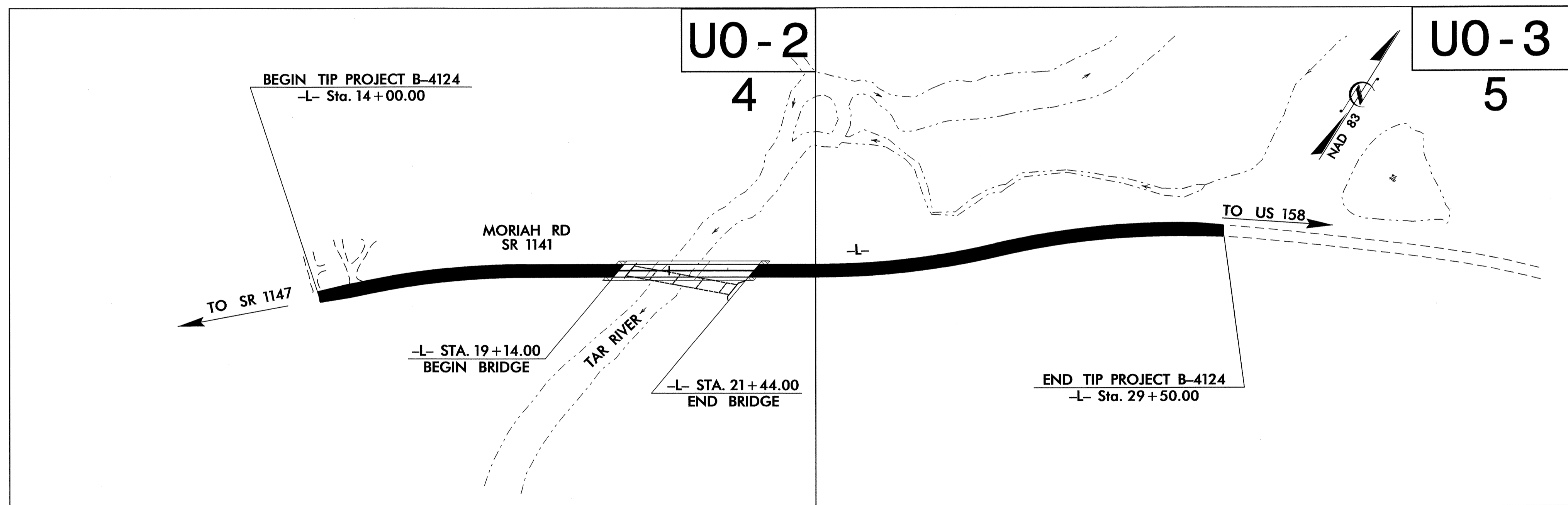
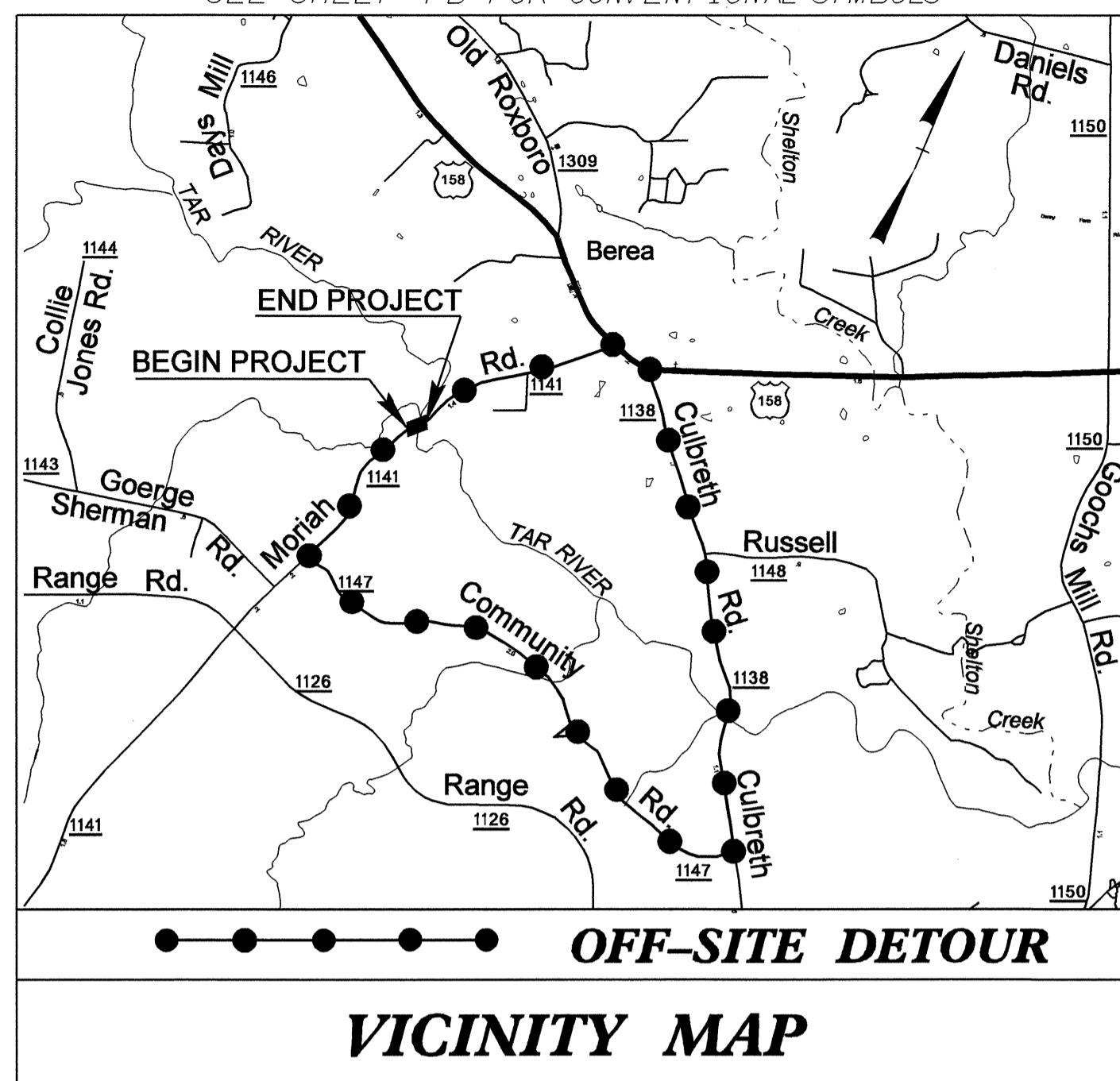
T.I.P. NO.	SHEET NO.
B-4124	UO-1

STATE OF NORTH CAROLINA  
DIVISION OF HIGHWAYS

**UTILITY BY OTHERS PLANS  
GRANVILLE COUNTY**

LOCATION: BRIDGE NO. 84 ON SR 1141 OVER TAR RIVER


TYPE OF WORK: UTILITIES



TIP B-4124

INDEX OF SHEETS	
SHEET NO.	DESCRIPTION
UO-1	TITLE SHEET
UO-2 THRU UO-3	UTILITY BY OTHERS PLAN SHEETS

UTILITY OWNERS ON PROJECT
(1) EMBARQ
(2) PROGRESS ENERGY



PREPARED IN THE OFFICE OF:  
**DIVISION OF HIGHWAYS  
DESIGN SERVICES  
UTILITY SECTION**

1591 MAIL SERVICES CENTER  
RALEIGH, NC 27699-1591  
PHONE (919) 256-4128  
FAX (919) 256-4119

---

Roger Worthington, P.E. UTILITIES SECTION ENGINEER  
Steve McKee, P.E. UTILITIES SQUAD LEADER PROJECT ENGINEER  
Alonza Yancey UTILITIES PROJECT DESIGNER

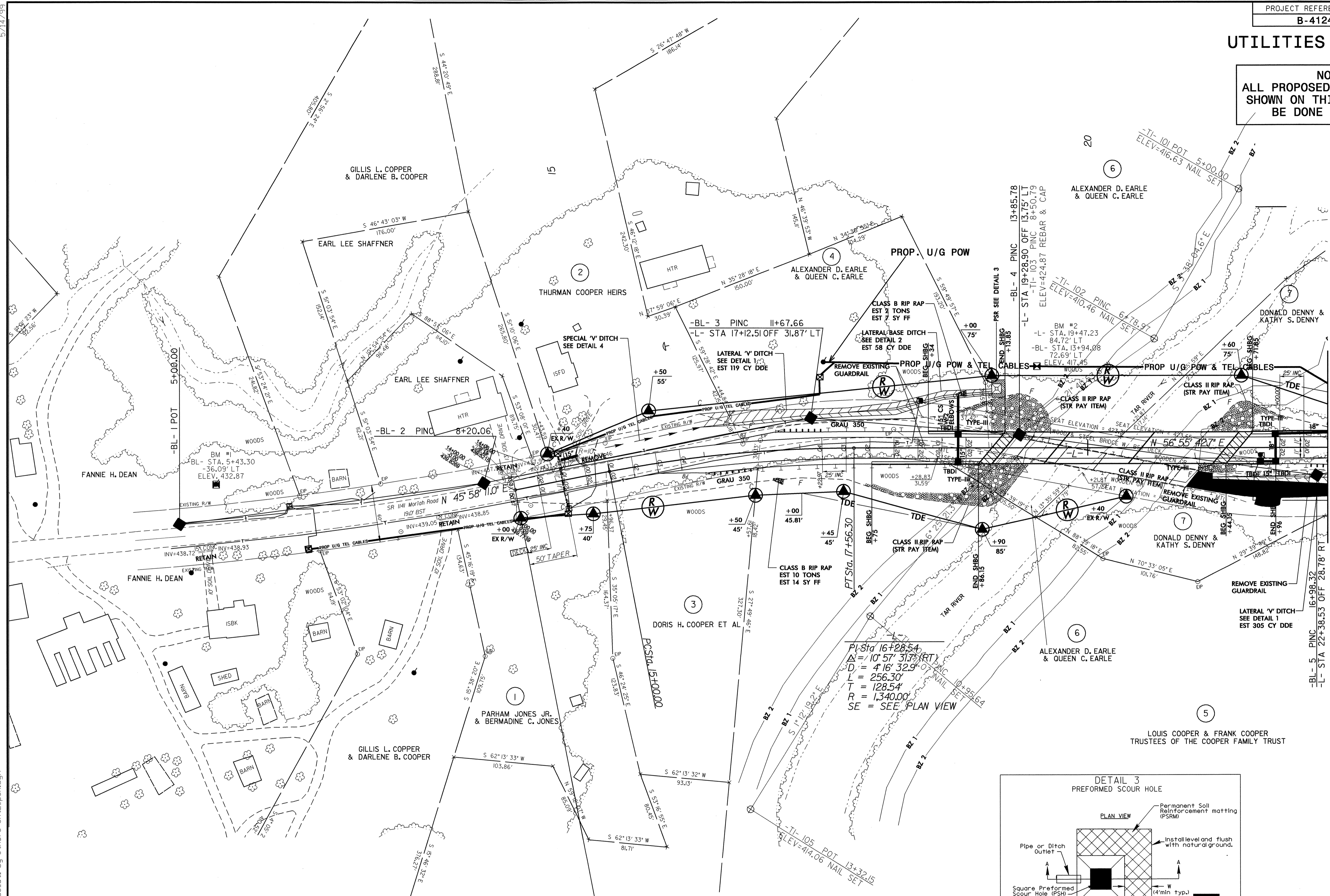
21-DEC-2007 11:02 r:\utilities\city\ut\proj\b4124\_uo-1\_utlby\_others\_sht1\_tsh.dgn \$\$\$SERVERNAME\$\$\$

UTILITIES BY OTHERS

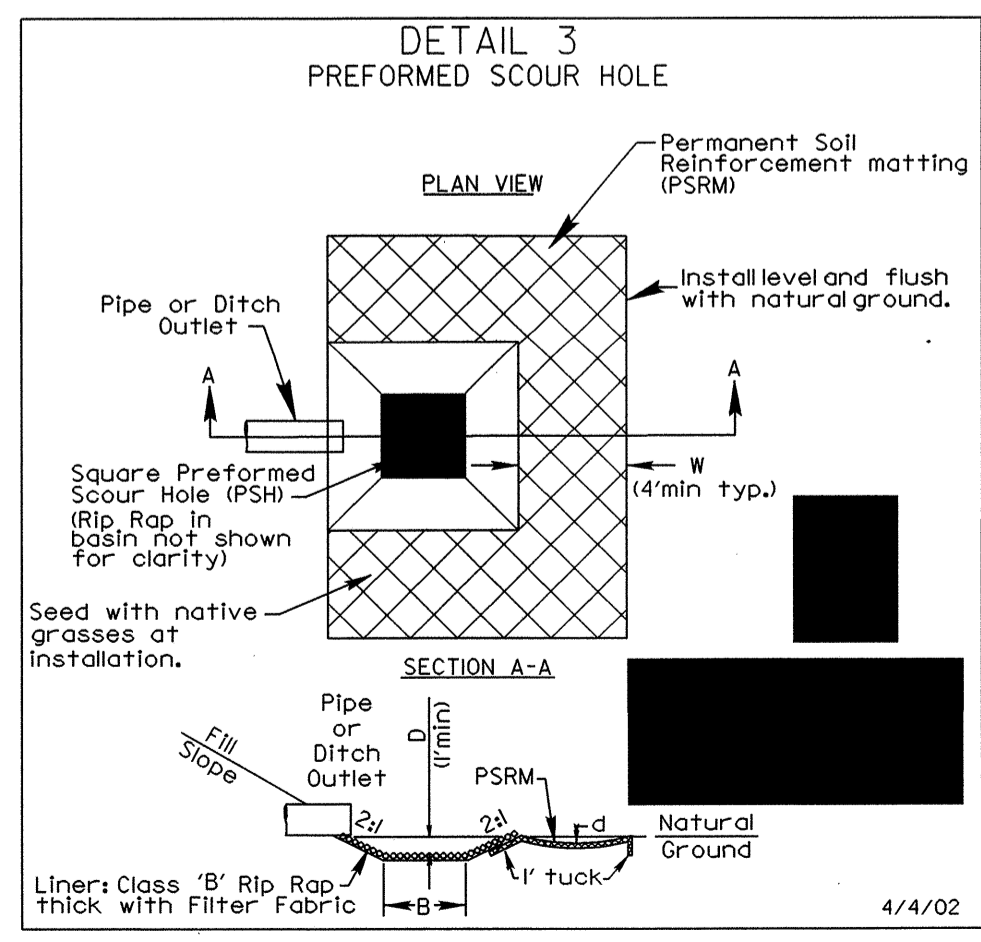
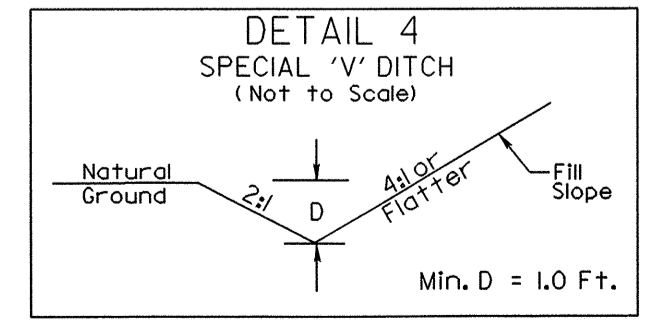
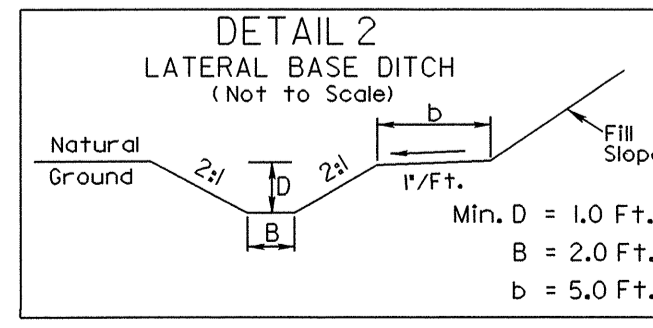
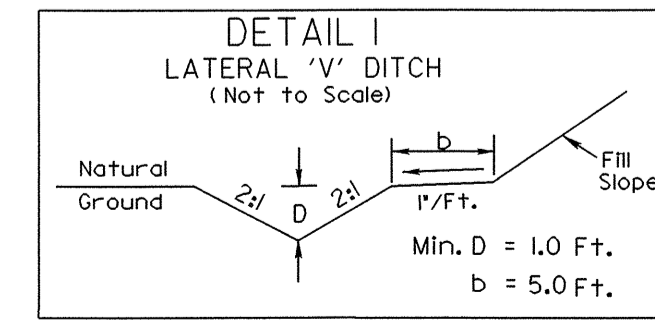
NOTE:  
ALL PROPOSED UTILITY WORK  
SHOWN ON THIS SHEET WILL  
BE DONE BY OTHERS

NAD 83  
GRID  
PC 16+22+56.30  
PROP. U/G POW  
& TEL CABLES

MATCH LINE SEE SHEET UO-3



BEGIN TIP PROJECT (B-4124)  
-L- POT Sta. 14+00.00



NOTES:  
1) TAPER SHOULDER GUARDRAIL 3 FACE OF GL POINT.  
2) SHBG DENO GUTTER.  
FOR -L- PRC

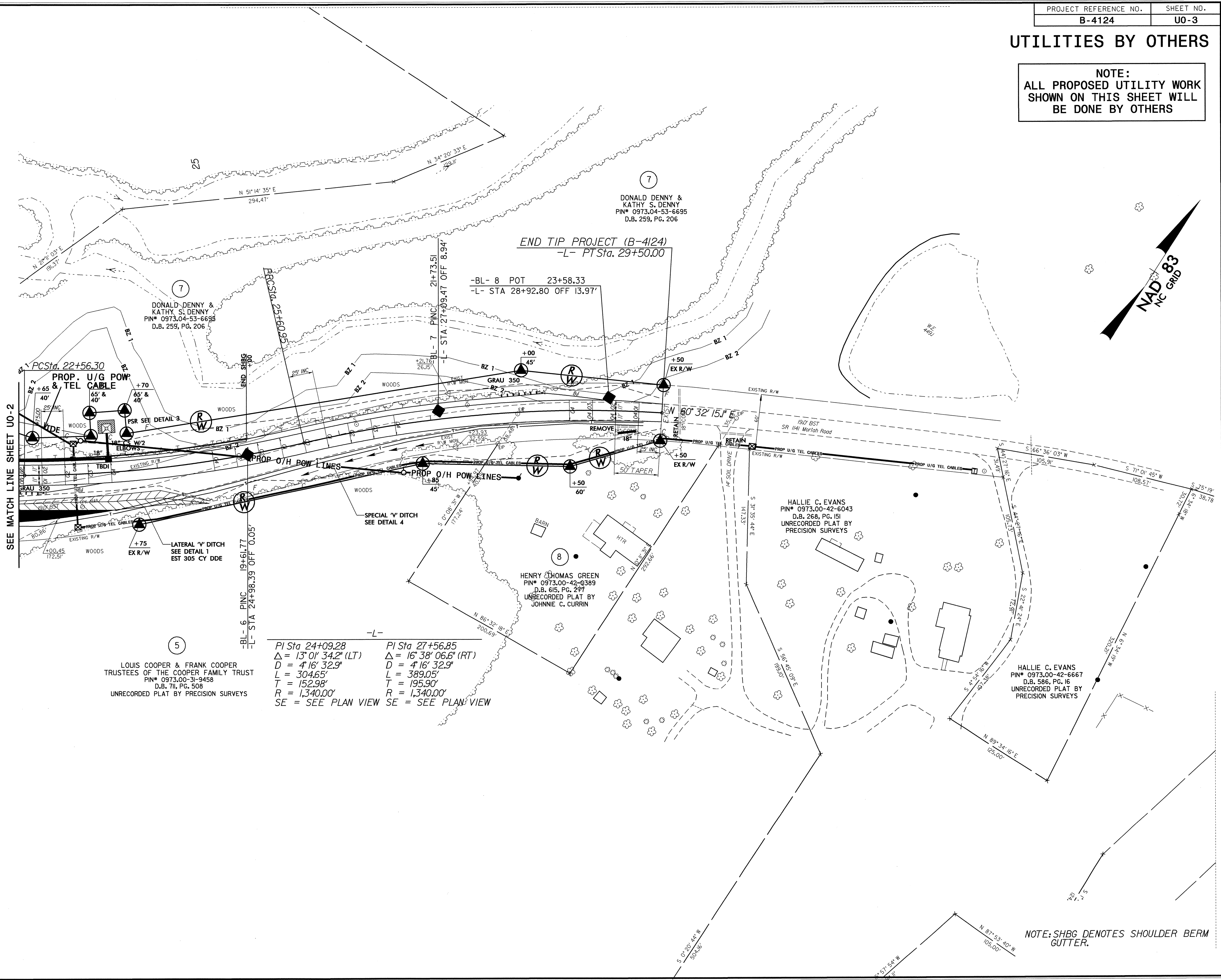
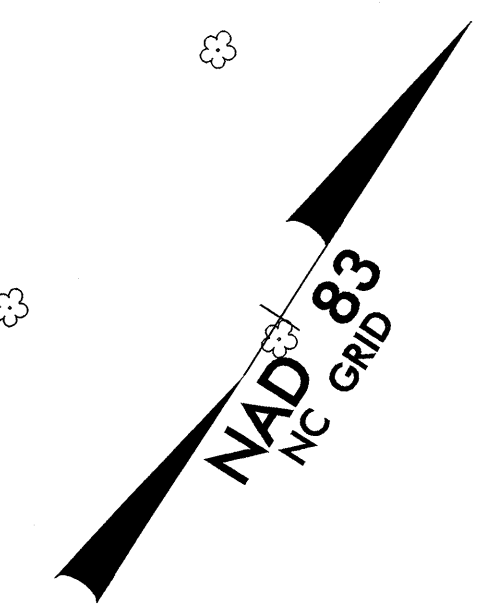
STA. 16+00 LT. TO STA. 18+00 LT. STA. 21+30 RT. TO STA. 24+50 RT. STA. 18+00 LT. TO STA. 19+00 LT. STA. 15+00 LT. TO STA. 16+00 LT. STA. 19+05 LT.

5/14/99  
03-JAN-2008 14:10  
s:\rdy ut\1504 ut14\_uo.utl by others sht4\_psh.dgn



UTILITIES BY OTHERS

NOTE:  
ALL PROPOSED UTILITY WORK  
SHOWN ON THIS SHEET WILL  
BE DONE BY OTHERS



7  
DONALD DENNY &  
KATHY S. DENNY  
PIN# 0973.04-53-6695  
D.B. 259, PG. 206

7  
DONALD DENNY &  
KATHY S. DENNY  
PIN# 0973.04-53-6695  
D.B. 259, PG. 206

END TIP PROJECT (B-4124)  
-L- PT Sta. 29+50.00

-BL- 8 POT 23+58.33  
-L- STA 28+92.80 OFF 13.97'

SEE MATCH LINE SHEET U0-2

PCSta. 22+56.30  
PROP. U/G POW & TEL CABLE

5  
LOUIS COOPER & FRANK COOPER  
TRUSTEES OF THE COOPER FAMILY TRUST  
PIN# 0973.00-31-9458  
D.B. 711, PG. 508  
UNRECORDED PLAT BY PRECISION SURVEYS

-L-  
PI Sta 24+09.28      PI Sta 27+56.85  
Δ = 13° 01' 34.2" (LT)      Δ = 16° 38' 06.6" (RT)  
D = 4' 16" 32.9"      D = 4' 16" 32.9"  
L = 304.65'      L = 389.05'  
T = 152.98'      T = 195.90'  
R = 1,340.00'      R = 1,340.00'  
SE = SEE PLAN VIEW      SE = SEE PLAN VIEW

8  
HENRY THOMAS GREEN  
PIN# 0973.00-42-0389  
D.B. 615, PG. 297  
UNRECORDED PLAT BY  
JOHNNIE C. CURRIN

HALLIE C. EVANS  
PIN# 0973.00-42-6667  
D.B. 586, PG. 16  
UNRECORDED PLAT BY  
PRECISION SURVEYS

NOTE: SHBG DENOTES SHOULDER BERM GUTTER.

5/14/09  
24-DEC-2007 08:51  
s:\rdy\ut\shd\4124\rdy\_sht5\_uo\_util\_by\_others\_sht3\_psh.dgn