

GENERAL NOTES

CHANGES MAY BE REQUIRED WHEN PHYSICAL DIMENSIONS IN THE DETAIL DRAWINGS, STANDARD DETAILS AND ROADWAY DETAILS ARE NOT ATTAINABLE TO MEET FIELD CONDITIONS, OR RESULT IN DUPLICATE, OR UNDESIRABLE OVERLAPPING OF DEVICES. MODIFICATION MAY INCLUDE: MOVING, SUPPLEMENTING, COVERING OR REMOVAL OF DEVICES, AS DIRECTED BY THE ENGINEER.

THE FOLLOWING GENERAL NOTES APPLY AT ALL TIMES FOR THE DURATION OF THE CONSTRUCTION PROJECT, EXCEPT WHEN OTHERWISE NOTED IN THE PLAN, OR DIRECTED BY THE ENGINEER.

TRAFFIC PATTERN ALTERATIONS

- A) NOTIFY THE ENGINEER TWENTY ONE (21) CALENDAR DAYS PRIOR TO ANY TRAFFIC PATTERN ALTERATION.

SIGNING

- B) PROVIDE PERMANENT SIGNING.
- C) PROVIDE DETOUR SIGNING WITHIN AND OFF THE PROJECT LIMITS.
- D) COVER OR REMOVE ALL DETOUR SIGNS WITHIN AND OFF THE PROJECT LIMITS WHEN A DETOUR IS NOT IN OPERATION.
- E) ENSURE ALL NECESSARY SIGNING IS IN PLACE PRIOR TO ALTERING ANY TRAFFIC PATTERN.

TRAFFIC CONTROL DEVICES

- F) PLACE TYPE III BARRICADES, WITH "ROAD CLOSED" SIGN R11-2 ATTACHED, OF SUFFICIENT LENGTH TO CLOSE ENTIRE ROADWAY.

PAVEMENT MARKINGS AND MARKERS

- G) INSTALL PAVEMENT MARKINGS AND PAVEMENT MARKERS ON THE FINAL SURFACE AS FOLLOWS:

ROAD NAME	MARKING	MARKER
SR 1141 (MORIAH RD)	PAINT	PERMANENT RAISED

- H) PLACE TWO APPLICATIONS OF PAINT PAVEMENT MARKINGS ON THE FINAL WEARING SURFACE. PLACE THE SECOND APPLICATION OF PAINT UPON SUFFICIENT DRYING TIME OF THE FIRST.
- I) TIE PROPOSED PAVEMENT MARKING LINES TO EXISTING PAVEMENT MARKING LINES.

PHASING

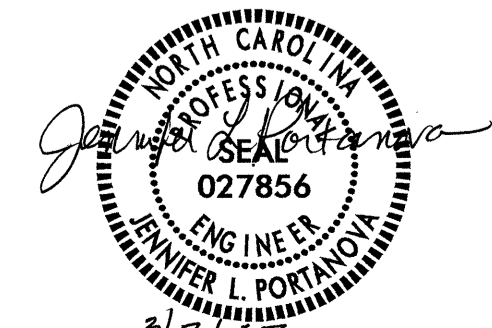
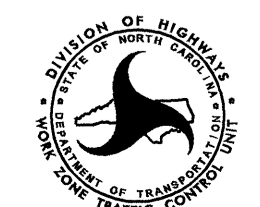
STEP 1: USING SHEETS TCP-3 AND TCP-4, INSTALL DETOUR SIGNS, PLACE TYPE III BARRICADES TO CLOSE SR 1141 (MORIAH RD.) TO THROUGH TRAFFIC, AND DETOUR TRAFFIC ONTO PROPOSED DETOUR.

STEP 2: AWAY FROM TRAFFIC, COMPLETE THE FOLLOWING:

- REMOVE EXISTING STRUCTURE No.84 AND CONSTRUCT PROPOSED STRUCTURE FROM -L- STA.19+14+/- TO -L- STA.21+44+/- . SEE ROADWAY PLANS.
- CONSTRUCT PROPOSED ROADWAY UP TO AND INCLUDING FINAL LAYER OF SURFACE COURSE FROM -L- STA.14+00+/- TO -L- STA.29+50+/- . SEE ROADWAY PLANS.
- PLACE FINAL PAVEMENT MARKING (PAINT) AND PAVEMENT MARKERS (PERMANENT RAISED) FROM -L- STA. 14+00+/- TO -L- STA.29+50+/- , AND TIE TO EXISTING PAVEMENT MARKING.

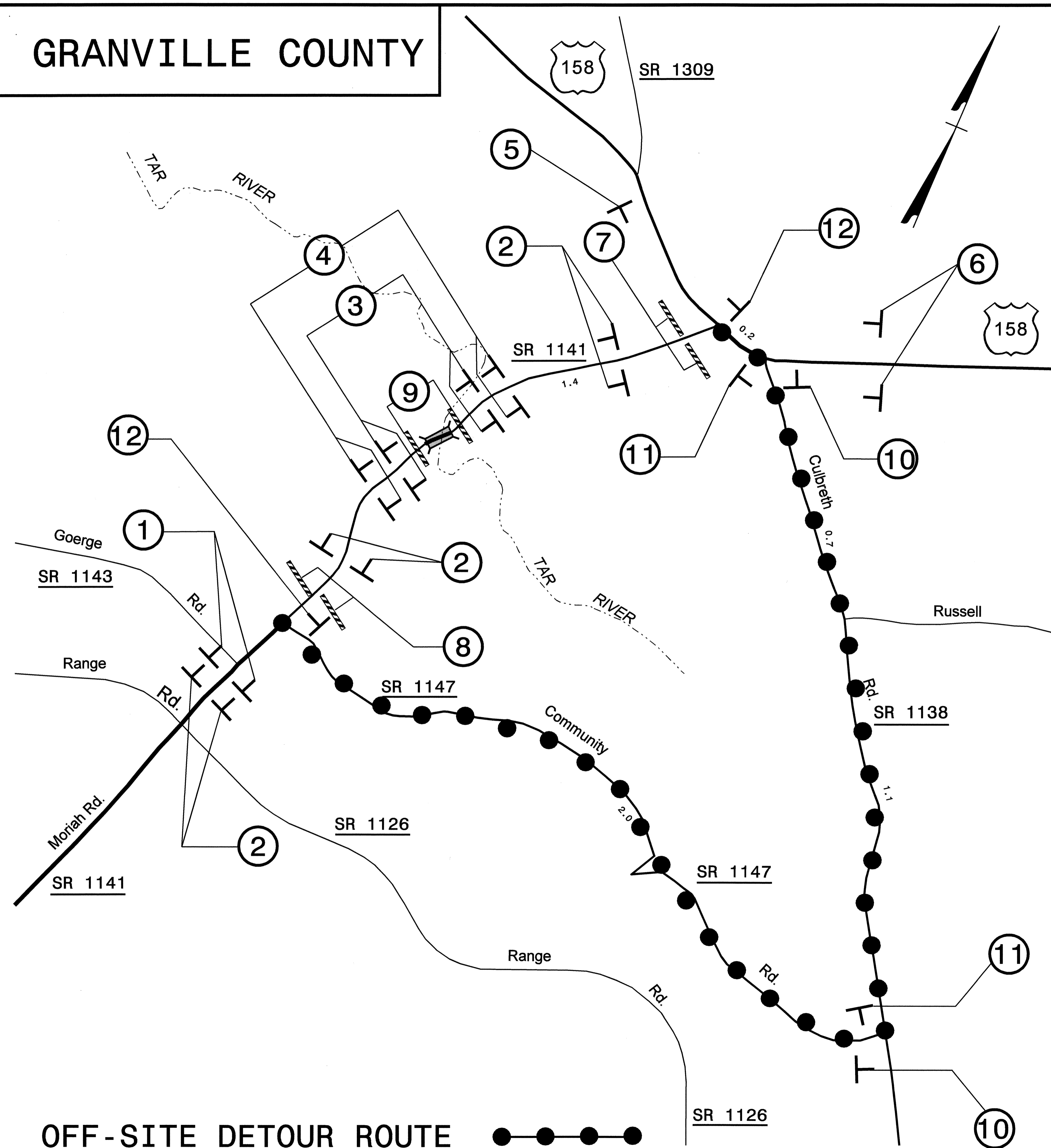
STEP 3: REMOVE ALL TRAFFIC CONTROL DEVICES AND ALL DETOUR SIGNING. OPEN SR 1141 (MORIAH RD.) TO TWO-LANE, TWO-WAY TRAFFIC PATTERN.

16-MAR-2007 11:55
 \dot\dfs\001\proj\1\ppr\projects-b\4124\traffic\trafficcontrol\tcp\b4124_tc_tcp2.dgn
 210WIN AT 11/22/2007

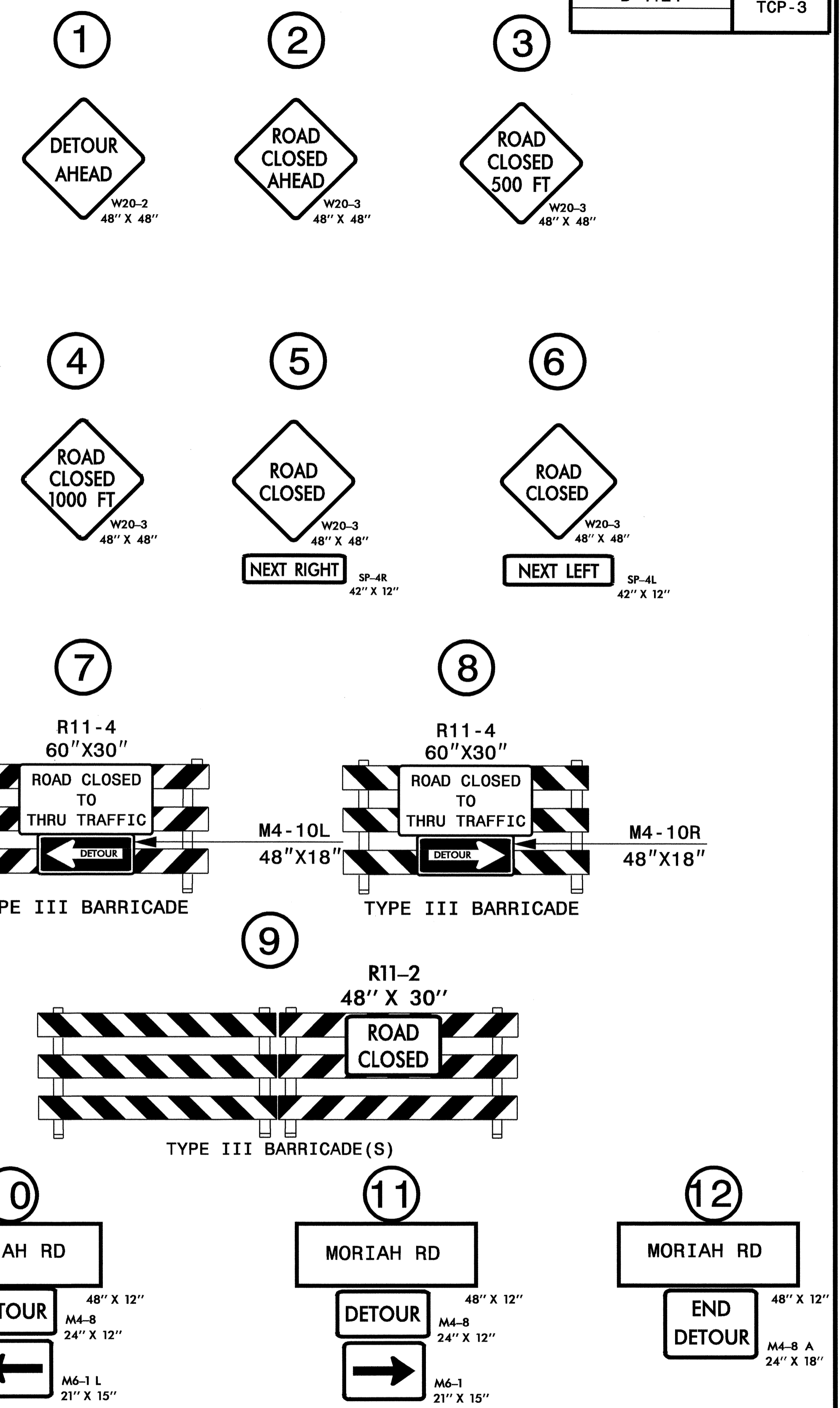
APPROVED:	DATE:	PROJECT NOTES AND PHASING									
											
SCALE:	NTS										
DATE:	02/07										
DWG. BY:	BN										
DESIGN BY:	BN										
REVIEWED BY:	JLP	<table border="1"> <thead> <tr> <th colspan="2">REVISIONS</th> </tr> </thead> <tbody> <tr> <td> </td> <td> </td> </tr> <tr> <td> </td> <td> </td> </tr> <tr> <td> </td> <td> </td> </tr> </tbody> </table>		REVISIONS							
REVISIONS											
CADD FILE											

GRANVILLE COUNTY

PROJ. REFERENCE NO.	SHEET NO.
B-4124	TCP-3



OFF-SITE DETOUR ROUTE ●●●●●
 SEE SHEET TCP-4 FOR DETOUR SIGN DESIGN



08-MAR-2007 07:54
 \\dot\dfs\root\proj\hibproj\projects-b\4124\traffic\trafficcontrol\top\b4124_tc_tcp3.dgn
 bnowlin AT WZTC24248

APPROVED: _____ DATE: _____	DETOUR ROUTE AND BARRICADE PLACEMENT	
	SCALE: NONE	
	DATE: 02/07	
	DWG. BY: BN	
	DESIGN BY: BN	
REVIEWED BY: JLP	REVISIONS	

