

09/08/99

TIP PROJECT: R-5017

C201802

CONTRACT:

# STATE OF NORTH CAROLINA DIVISION OF HIGHWAYS

## PLAN FOR PROPOSED HIGHWAY EROSION CONTROL

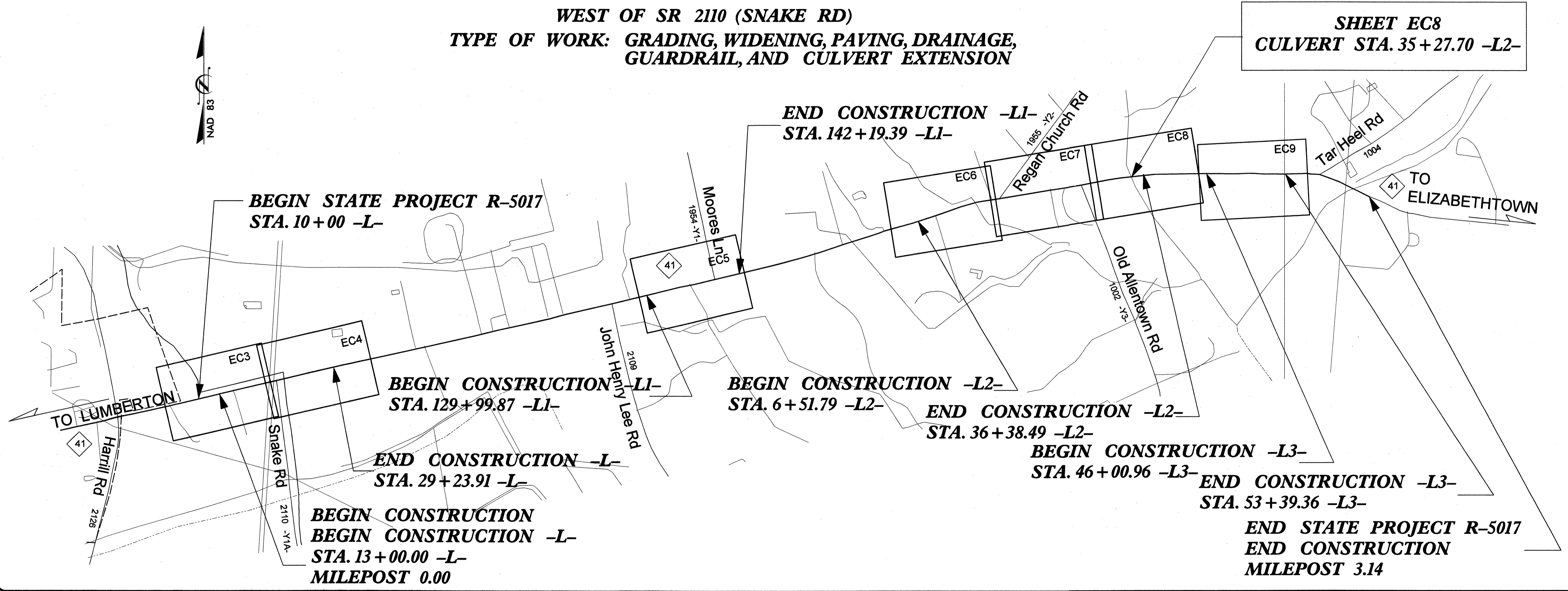
### ROBESON COUNTY

LOCATION: NC 41 FROM EXISTING THREE-LANE SECTION 0.16 MI  
WEST OF SR 2110 (SNAKE RD)  
TYPE OF WORK: GRADING, WIDENING, PAVING, DRAINAGE,  
GUARDRAIL, AND CULVERT EXTENSION

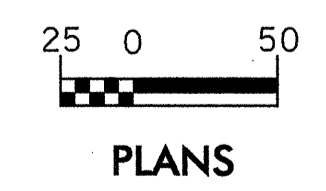
STATE	STATE PROJECT REFERENCE NO.	SHEET NO.	TOTAL SHEETS
N.C.	R-5017	EC-1	8
STATE PROJ. NO.	F.A. PROJ. NO.	DESCRIPTION	
37987		P.E., R/W	
41519.3.1		CONST.	

#### EROSION AND SEDIMENT CONTROL MEASURES

Std. #	Description	Symbol
1605.01	Temporary Silt Fence	
1633.01	Temporary Rock Silt Check Type-A	▣
1633.02	Temporary Rock Silt Check Type-B	▣
	Rock Inlet Sediment Trap	◻ OR ◻
1632.03	Type C	◻



#### GRAPHIC SCALE



PLANS

#### ROADWAY DESIGN ENGINEER



SIGNATURE: Lisa M. Podszwa P.E.

**HDR** Prepared By:  
HDR Engineering, Inc.  
of the Carolinas  
128 S. Tryon Street, Suite 1400 Charlotte, N.C. 28202

2006 STANDARD SPECIFICATIONS

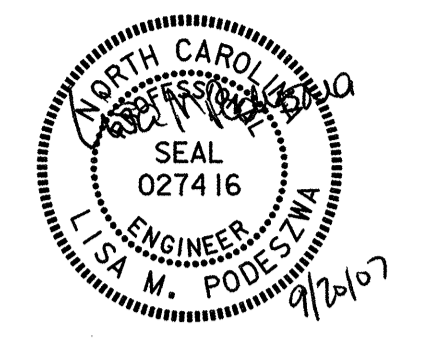
Roadway Standard Drawings  
The following roadway english standards as appear in "Roadway Standard Drawings"- Roadway Design Unit - N. C. Department of Transportation - Raleigh, N. C., dated July 18, 2006 and the latest revision thereto are applicable to this project and by reference hereby are considered a part of these plans.

- 1605.01 Temporary Silt Fence
- 1607.01 Gravel Construction Entrance
- 1632.03 Rock Inlet Sediment Trap Type C
- 1633.01 Temporary Rock Silt Check Type A
- 1633.02 Temporary Rock Silt Check Type B









**DATUM DESCRIPTION**  
 THE LOCALIZED COORDINATE SYSTEM DEVELOPED FOR THIS PROJECT IS BASED ON THE NORTH CAROLINA STATE PLANE COORDINATE SYSTEM ESTABLISHED BY A THREE RECEIVER STATIC GPS SYSTEM FROM NCGS MONUMENT "COX" HAVING NAD83 COORDINATES OF N 326,119.367', E 2,023,359.350', AND AN NGVD29 ELEVATION OF 143.92'.

\*NOTE:  
 DATUM INFORMATION FOR THIS SECTION IS DIFFERENT THEN THE REST OF THE PROJECT. ONLY USE THIS DATUM IN FORMATION FOR THIS SECTION

THE AVERAGE COMBINED GRID FACTOR USED ON THIS PROJECT (GRID TO GROUND) IS 0.99992654.

ALL LINEAR DIMENSIONS ARE LOCALIZED HORIZONTAL DISTANCES.

TOPOGRAPHICAL SURVEY PROVIDED BY:  
 MICHAEL TATE, PROFESSIONAL LAND SURVEYOR  
 3521 CLINTON ROAD, FAYETTEVILLE, N.C. 28301  
 PH: 910-483-7387

CHERYL ANN THOMAS  
 PB 13, PG 36  
 DB 1397 PG 68

NOTE:  
 PERIMETER EROSION CONTROL MEASURES SHALL BE INSTALLED DURING CLEARING AND GRUBBING PHASE.

NOTE:  
 PLACE TEMPORARY ROCK SEDIMENT DAMS TYPE- B AND TEMPORARY ROCK SILT CHECKS TYPE-A AT DRAINAGE OUTLETS.

RIGHT OF WAY AREA TAKE  
 PROJECT TOTAL = 64,775 SQ. FT.  
 PROJECT TOTAL = 1.487 ACRES  
 SAY 1.5 ACRES

\*NOTE:  
 DO NOT DISTURB WETLANDS

CONSTRUCT NEW HEADWALL  
 STD. No. 838.01

CONSTRUCT NEW HEADWALL  
 STD. No. 838.01

JACK SHAFT  
 128+78.57  
 31.48' LT

FIRST UNION NATIONAL BANK  
 AND N. G. CALDWELL, HEIRS  
 Nell A. Thompson, III, Nora Dean  
 Albright, John P. Barker  
 (Testamentary Trust No. 1013061918)  
 PB 19, PG 86  
 DB 789, PG 863  
 DB 1540, PG 123

FIRST UNION NATIONAL BANK  
 AND N. G. CALDWELL, HEIRS  
 Nell A. Thompson, III, Nora Dean  
 Albright, John P. Barker  
 (Testamentary Trust No. 1013061918)  
 PB 19, PG 86  
 DB 789, PG 863  
 DB 1540, PG 123

LI-POT 141+77.1  
 N 324702.3426  
 E 2017343.2945  
 GROUND

YI-POT 13+00.00  
 N 324927.9111  
 E 2016988.5466  
 GROUND

LI-POT 128+18.00  
 N 324408.3940  
 E 2016077.2650  
 GROUND

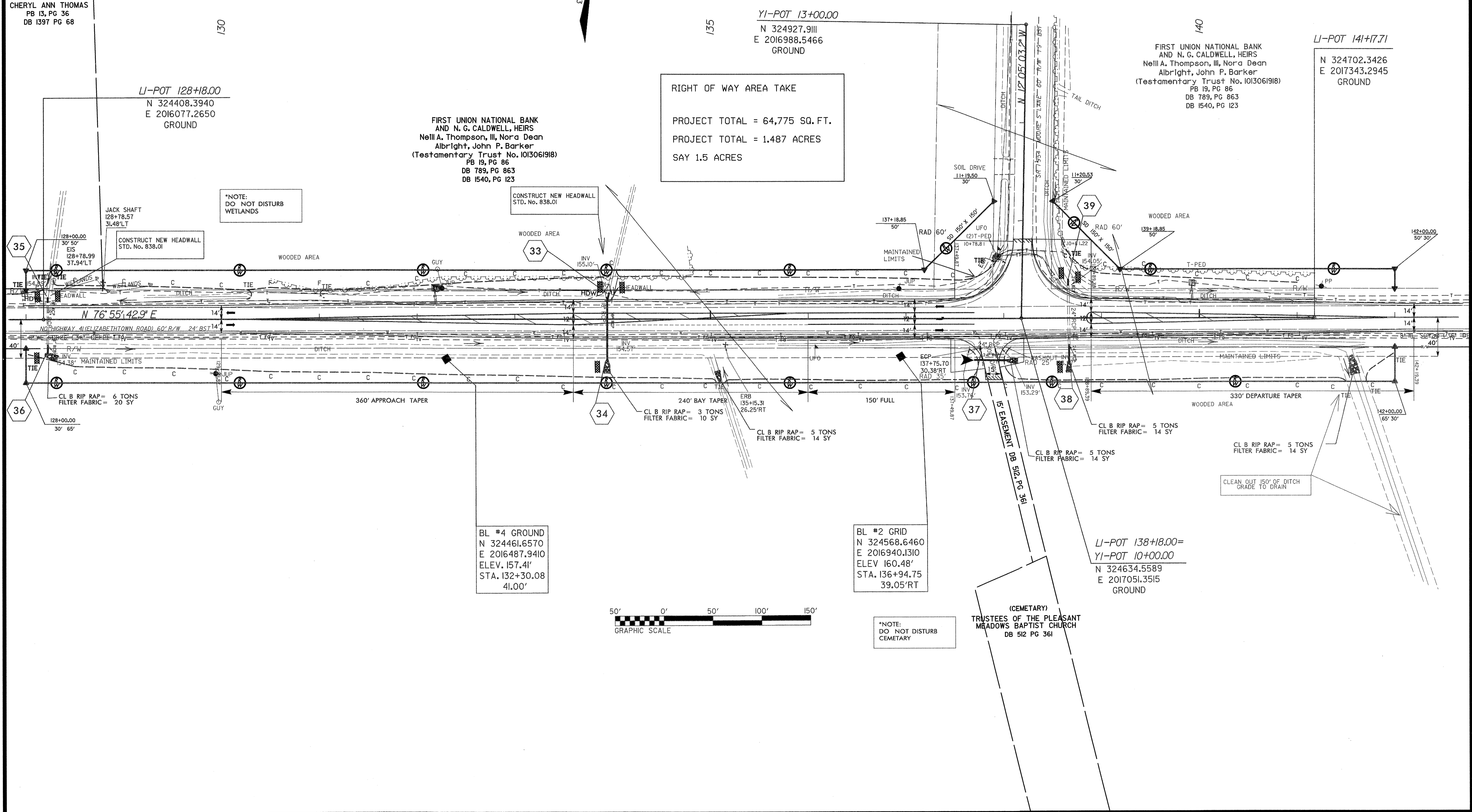
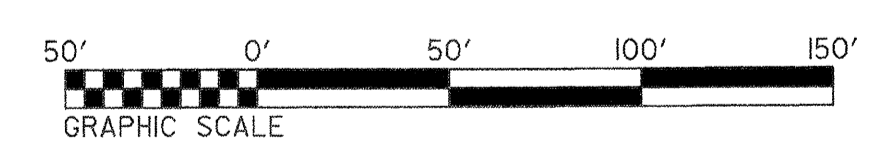
BL #4 GROUND  
 N 324461.6570  
 E 2016487.9410  
 ELEV. 157.41'  
 STA. 132+30.08  
 41.00'

BL #2 GRID  
 N 324568.6460  
 E 2016940.1310  
 ELEV 160.48'  
 STA. 136+94.75  
 39.05' RT

LI-POT 138+18.00=  
 YI-POT 10+00.00  
 N 324634.5589  
 E 2017051.3515  
 GROUND

\*NOTE:  
 DO NOT DISTURB CEMETARY

(CEMETARY)  
 TRUSTEES OF THE PLEASANT  
 MEADOWS BAPTIST CHURCH  
 DB 512 PG 361










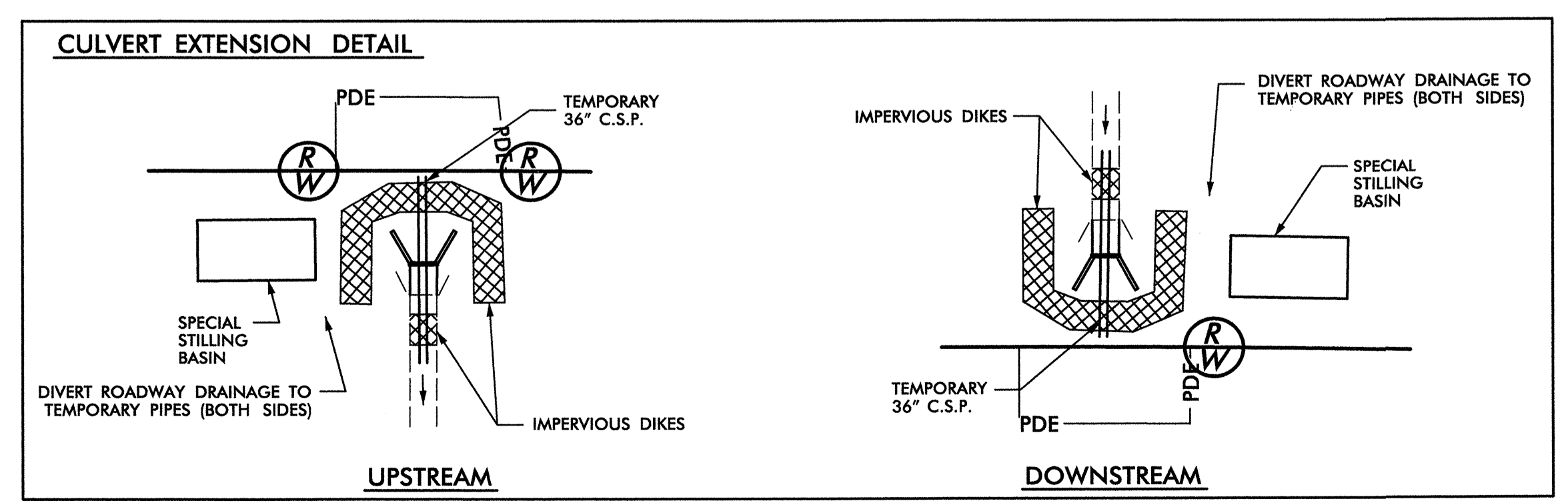
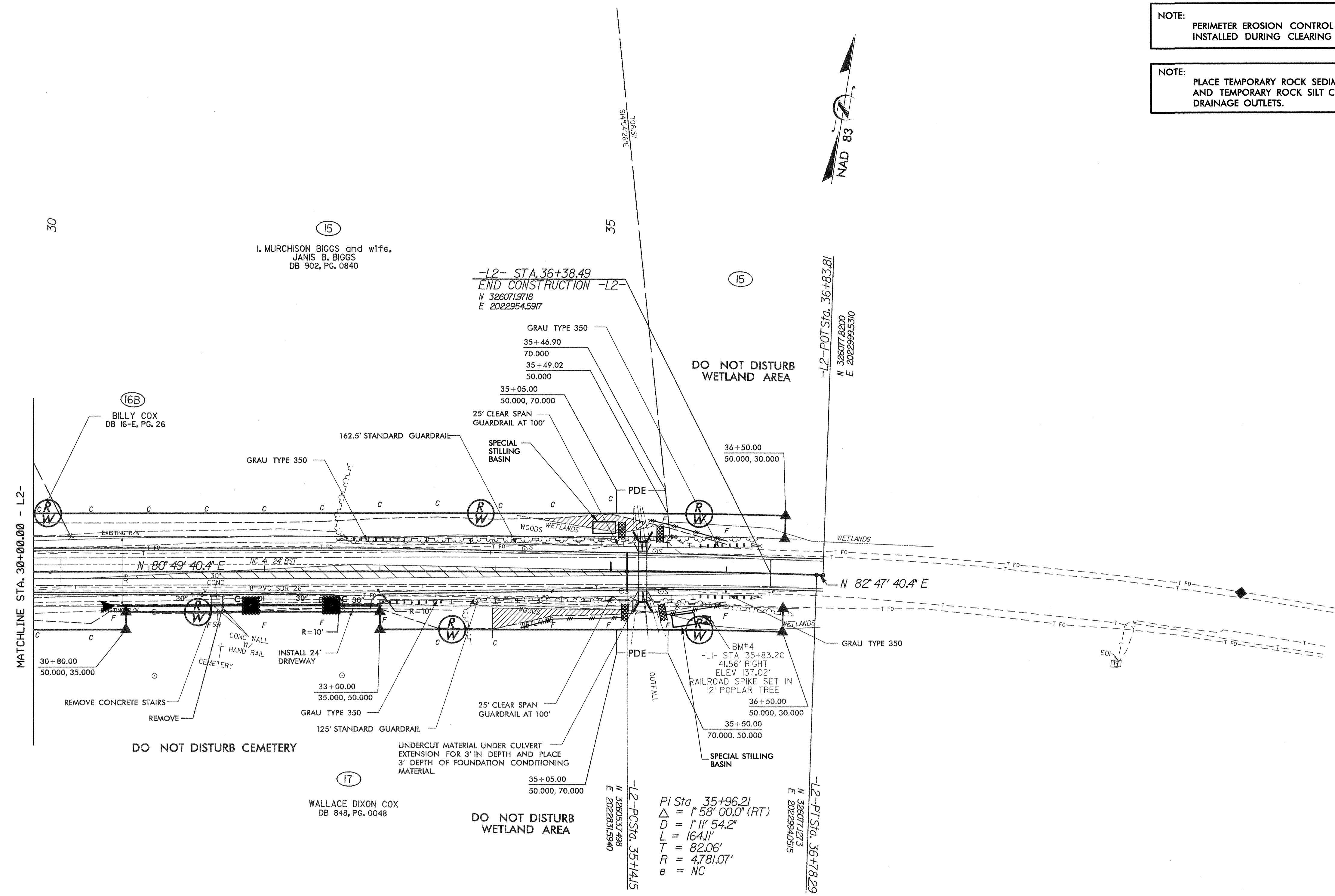
8/17/99

9/17/2007  
2:47:30 PM  
C:\pwworkspace\TPA\dms17151\B-5017-BELL.DWG

PROJECT REFERENCE NO. R-5017	SHEET NO. EC-7
RW SHEET NO.	
ROADWAY DESIGN ENGINEER	HYDRAULICS ENGINEER
	

NOTE:  
PERIMETER EROSION CONTROL MEASURES SHALL BE INSTALLED DURING CLEARING AND GRUBBING PHASE.

NOTE:  
PLACE TEMPORARY ROCK SEDIMENT DAMS TYPE- B AND TEMPORARY ROCK SILT CHECKS TYPE-A AT DRAINAGE OUTLETS.



- CONSTRUCTION SEQUENCE:**
- UPSTREAM:**
1. INSTALL IMPERVIOUS DIKES AND A TEMPORARY 36" C.S. PIPE.
  2. DEWATER SITE UTILIZING SPECIAL STILLING BASIN AND AS DIRECTED BY THE ENGINEER.
  3. EXTEND R.C.B.C.
  4. REMOVE TEMPORARY PIPES, IMPERVIOUS DIKES, AND SPECIAL STILLING BASINS.
- REPEAT SEQUENCE FOR DOWNSTREAM CULVERT EXTENSION.

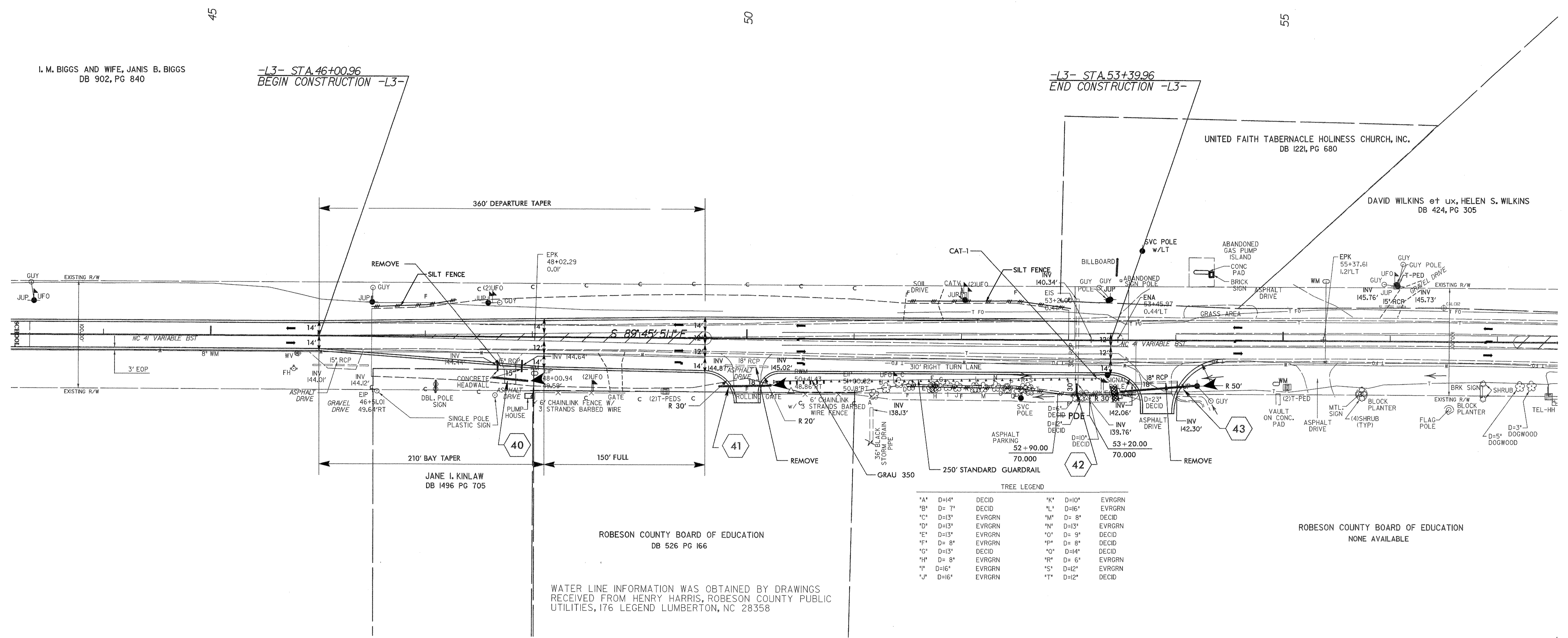


8/17/99  
9/17/2007  
2:44:23 PM  
C:\pwork\nc\TDA\des31401R-5017.dwg

PROJECT REFERENCE NO. <b>R-5017</b>	SHEET NO. <b>EC-8</b>
RW SHEET NO.	
ROADWAY DESIGN ENGINEER	HYDRAULICS ENGINEER

NOTE:  
PERIMETER EROSION CONTROL MEASURES SHALL BE INSTALLED DURING CLEARING AND GRUBBING PHASE.

NOTE:  
PLACE TEMPORARY ROCK SEDIMENT DAMS TYPE- B AND TEMPORARY ROCK SILT CHECKS TYPE-A AT DRAINAGE OUTLETS.



TREE LEGEND

*A* D=14"	DECID	*K* D=10"	EVRGRN
*B* D= 7"	DECID	*L* D=16"	EVRGRN
*C* D=13"	EVRGRN	*M* D= 8"	DECID
*D* D=13"	EVRGRN	*N* D=13"	EVRGRN
*E* D=13"	EVRGRN	*O* D= 9"	DECID
*F* D= 8"	EVRGRN	*P* D= 8"	DECID
*G* D=13"	DECID	*Q* D=14"	DECID
*H* D= 8"	EVRGRN	*R* D= 6"	EVRGRN
*I* D=16"	EVRGRN	*S* D=12"	EVRGRN
*J* D=16"	EVRGRN	*T* D=12"	DECID

WATER LINE INFORMATION WAS OBTAINED BY DRAWINGS RECEIVED FROM HENRY HARRIS, ROBESON COUNTY PUBLIC UTILITIES, 176 LEGEND LUMBERTON, NC 28358