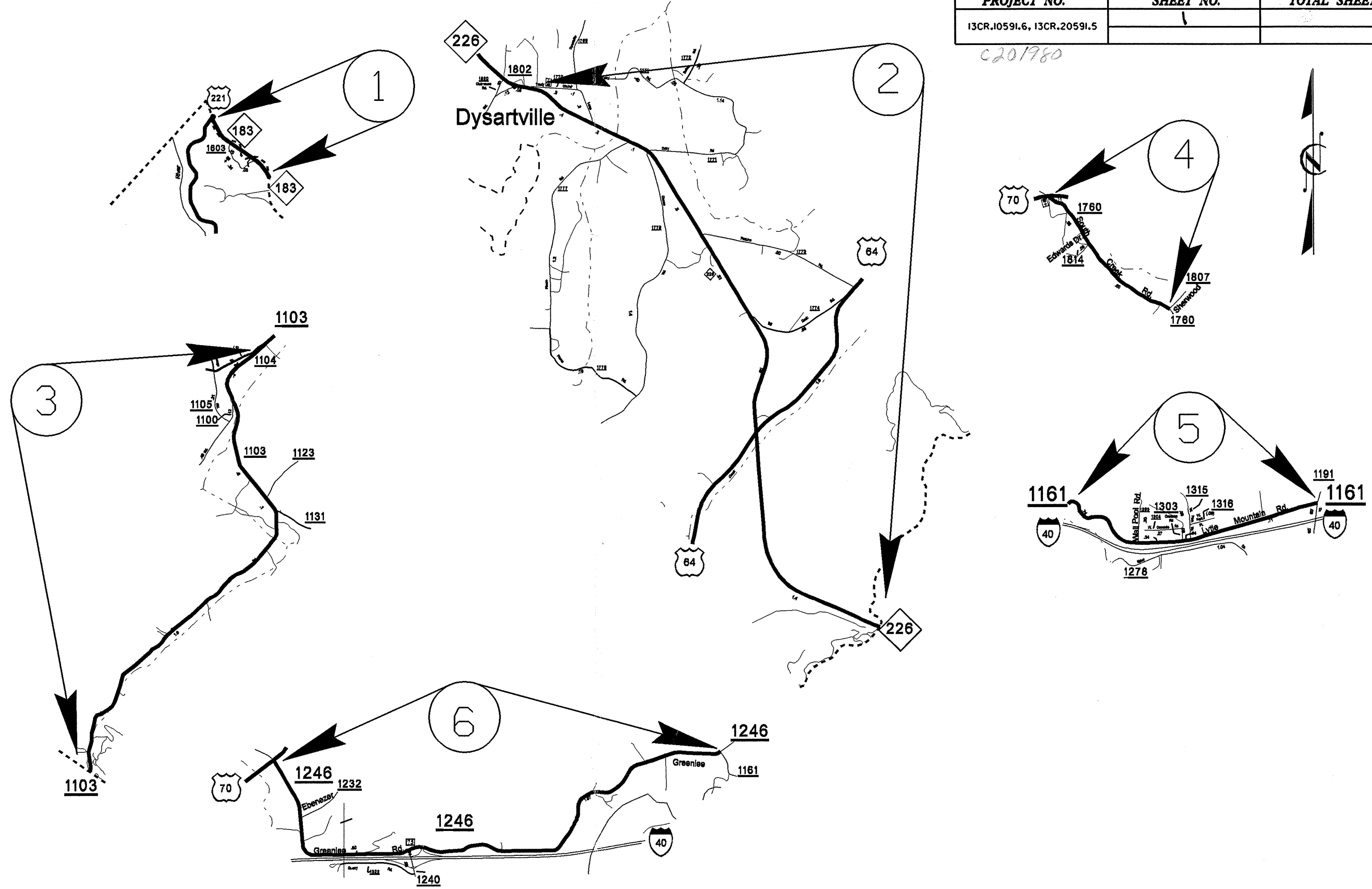


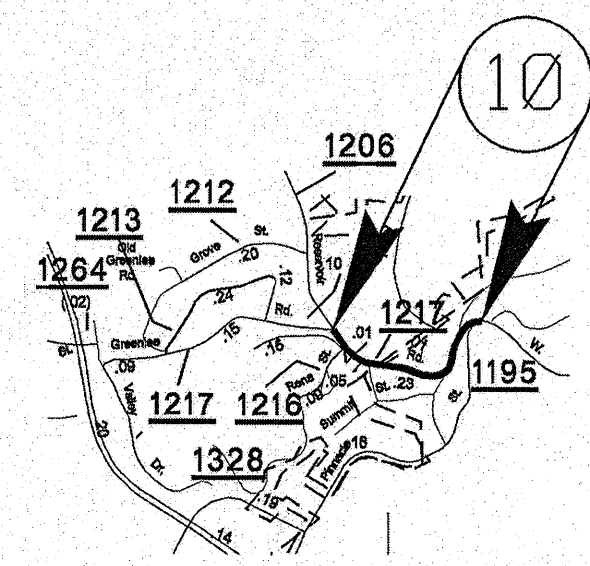
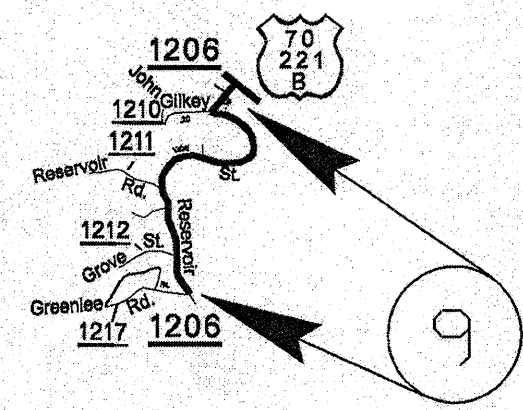
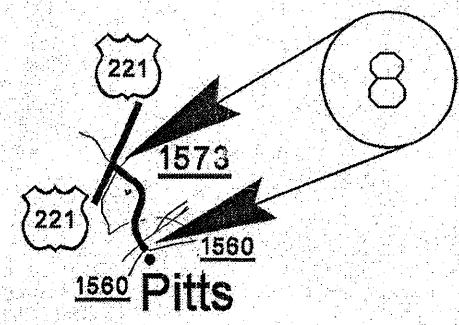
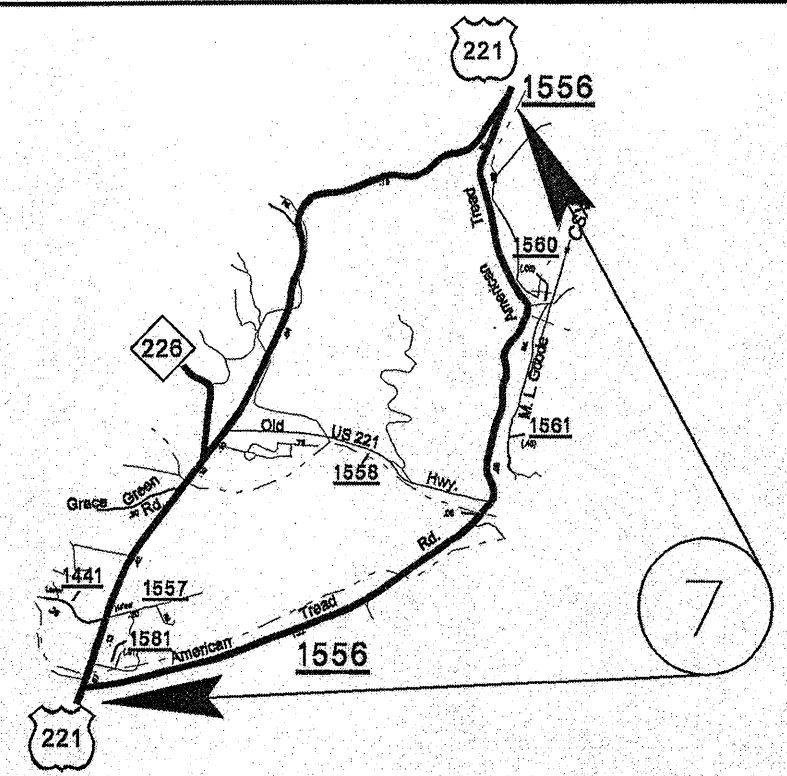
PROJECT NO.	SHEET NO.	TOTAL SHEETS
13CR.10591.6, 13CR.20591.5	1	

C201980



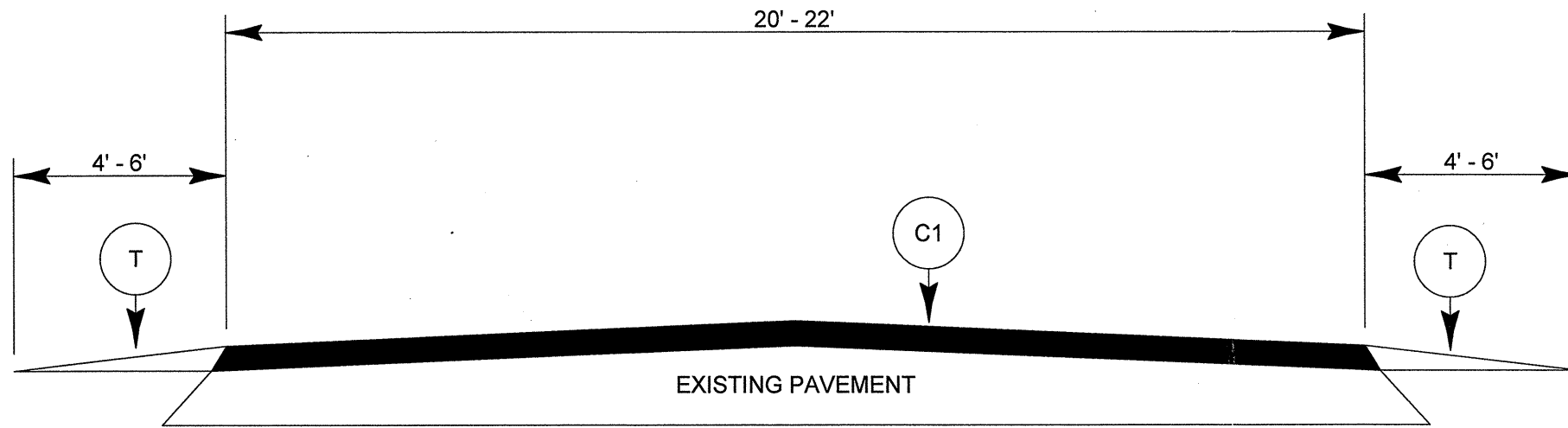
MCDOWELL COUNTY

PROJECT NO.	SHEET NO.	TOTAL SHEETS
13CR.1059L6, 13CR.2059L5	2	

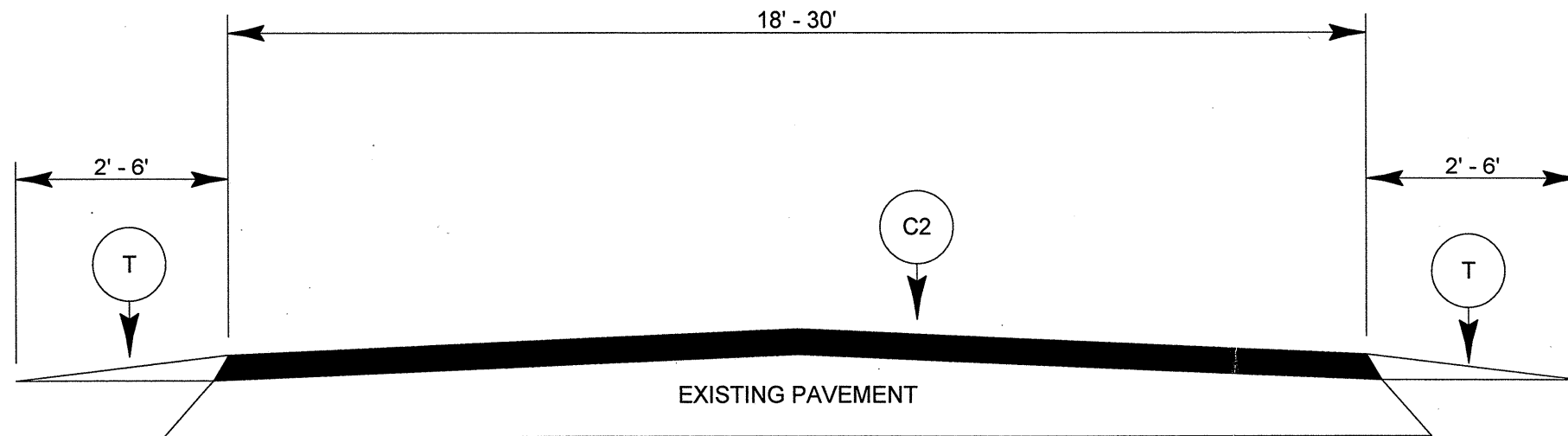


MCDOWELL COUNTY

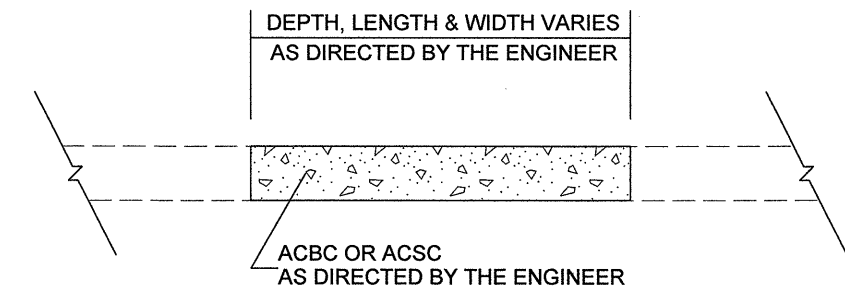
PROJECT NO.	SHEET NO.	TOTAL SHEETS
13CR.10591.6, 13CR.20591.5	3	



TYPICAL SECTION NO. 1



TYPICAL SECTION NO. 2



PATCHING EXISTING PAVEMENT

PAVEMENT SCHEDULE	
C1	PROP. APPROX. 1.5" ACSC, TYPE S9.5B AT AN AVERAGE RATE OF 168 POUNDS PER SQ. YD.
C2	PROP. APPROX. 1.5" ACSC, TYPE SF9.5A AT AN AVERAGE RATE OF 165 POUNDS PER SQ. YD.
T	SHOULDER RECONSTRUCTION

PROJECT NO.	SHEET NO.	TOTAL NO.
13CR.10591.6, 13CR.20591.5		

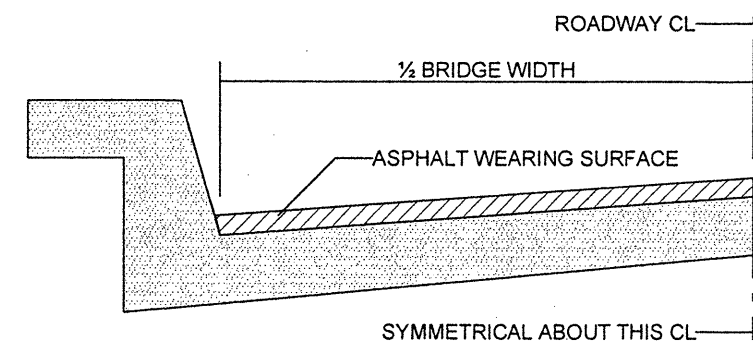
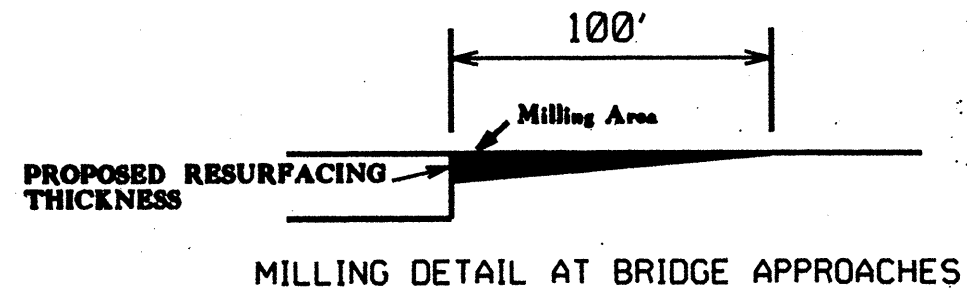
SUMMARY OF QUANTITIES

PROJECT NO	COUNTY	MAP NO	ROUTE	DESCRIPTION	TYP NO	LENGTH MI	WIDTH FT	INCIDENTAL STONE BASE TONS	SHOULDER RECONSTRUCTION SMI	SURFACE COURSE, S9.5B TONS	SURFACE COURSE, SF9.5A TON	PG 64-22 PLANT MIX TONS	PATCHING EXISTING PAVEMENT TONS
13CR.10591.6	McDowell	1	NC 183	US 221 TO BURKE COUNTY	1	0.7	20	35	1.40	764		46	175
		2	NC 226	RUTHERFORD COUNTY TO SR 1802	1	3.86	22	193	7.72	4,629		278	25
TOTAL FOR PROJ NO. 13CR.10591.6						4.56		228	9.12	5,393		324	200
13CR.20591.5	McDowell	3	SR 1103	BUNCOMBE COUNTY TO SR 1104	2	2.91	19	146	5.82		2,963	193	100
		4	SR 1760	SR 1807 TO US 70	2	0.87	20	44	1.74		932	61	25
		5	SR 1161	SR 1191 WESTERLY FOR 1.70 MILES TO NEW PAVEMENT	2	1.7	19	85	3.40		1,731	113	35
		6	SR 1246	US 70 TO SR 1161	2	3.05	18	153	6.10		2,943	191	100
		7	SR 1556	US 221 TO US 221	2	2.32	20	116	4.64		2,486	162	80
		8	SR 1573	SR 1560 TO US 221	2	0.28	30	14	0.56		504	33	
		9	SR 1206	US 70-US221 BUS. TO SR 1217	2	0.95	18	48	1.90		917	60	50
		10	SR 1217	SR 1206 TO SR 1195	2	0.27	18	14	0.54		316	21	75
TOTAL FOR PROJ NO. 13CR.20591.5						12.35		620	24.70		12,792	834	465
GRAND TOTAL						16.91		848	33.82	5,393	12,792	1,158	665

THERMOPLASTIC AND PAINT QUANTITIES

PROJECT NO	COUNTY	MAP NO	ROUTE	DESCRIPTION	4685000000-E	4686000000-E	4810000000-E		4830000000-E	4835000000-E	4840000000-N
					4" X 90 M WHITE THERMO LF	4" X 120 M YELLOW THERMO LF	4" WHITE PAINT LF	4" YELLOW PAINT LF	16" WHITE PAINT LF	24" WHITE PAINT LF	PAINT MSG RXR EA
13CR.10591.6	McDowell	1	NC 183	US 221 TO BURKE COUNTY	7,392	7,392					
		2	NC 226	RUTHERFORD COUNTY TO SR 1802	40,762	40,762					
TOTAL FOR PROJ NO. 13CR.10591.6					48,154	48,154					
13CR.20591.5	McDowell	3	SR 1103	BUNCOMBE COUNTY TO SR 1104			61,459	61,459		10	
		4	SR 1760	SR 1807 TO US 70			18,374	18,374			
		5	SR 1161	SR 1191 WESTERLY FOR 1.70 MILES TO NEW PAVEMENT			35,904	35,904			
		6	SR 1246	US 70 TO SR 1161			64,416	64,416	100	50	4
		7	SR 1556	US 221 TO US 221			48,998	48,998			
		8	SR 1573	SR 1560 TO US 221			5,914	5,914	100	50	4
		9	SR 1206	US 70-US221 BUS. TO SR 1217			20,064	20,064			
		10	SR 1217	SR 1206 TO SR 1195			5,702	5,702			
TOTAL FOR PROJ NO. 13CR.20591.5							260,832	260,832	200	110	8
GRAND TOTAL					48,154	48,154	260,832	260,832	200	110	8

PROJECT NO.	SHEET NO.	TOTAL SHEETS
13CR.10591.6, 13CR.20591.5	4	



BRIDGE HALF TYPICAL SECTION

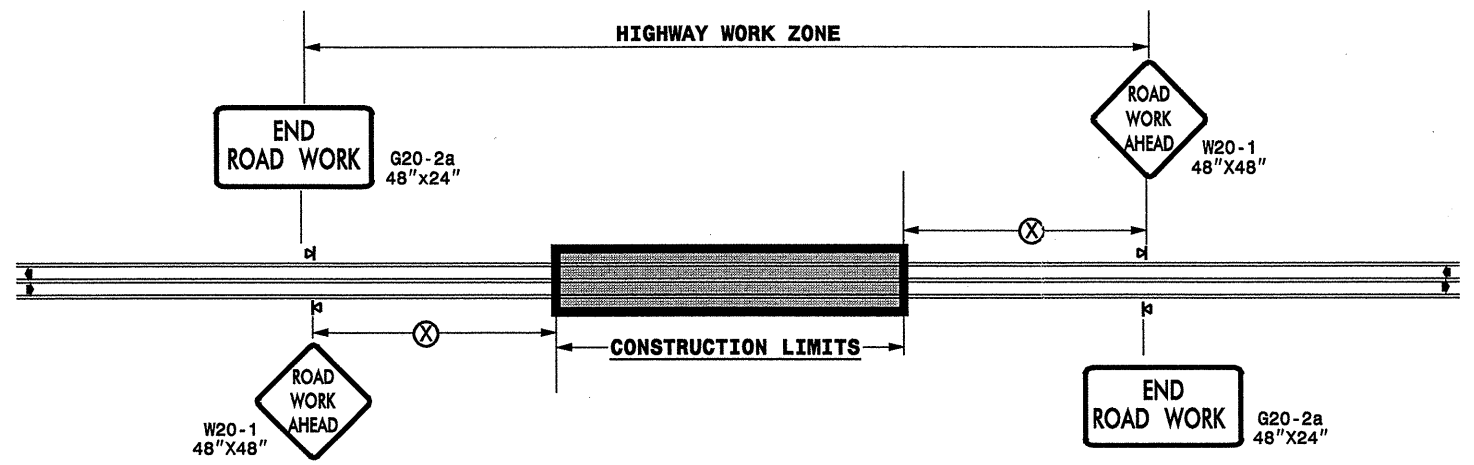
FOR BRIDGES WITH FLOOR DRAINS, CARE SHALL BE EXERCISED IN PLACING THE WEARING SURFACE AROUND FLOOR DRAINS SO AS NOT TO HINDER EFFECTIVE DRAINAGE. ALL DRAINS SHALL BE LEFT OPEN

THE PROPOSED WEARING SURFACE SHALL VARY IN THICKNESS AS NECESSARY TO PROVIDE A SMOOTH RIDING SURFACE. A THICKNESS OF NOT LESS THAN 5/8" SHALL BE PROVIDED. THE MAXIMUM THICKNESS SHALL PREFERABLY BE 1 1/2" UNLESS IT IS IMPRACTICAL TO PROVIDE A SMOOTH RIDING SURFACE OTHERWISE.

NOTES

ALL UNPAVED ROADS TO BE RESURFACED 50' FROM EDGE OF PAVEMENT OF MAIN PROJECT.
 ALL PAVED S.R. ROADS TO BE RESURFACED TO THE ENDS OF THE RADII, OR AS DIRECTED BY THE ENGINEER.
 EDGES, PAVEMENT WIDENING, INTERSECTIONS AND BRIDGE FLARES ARE INCLUDED IN THE TABLE OF QUANTITIES.
 SHOULDERS AND DITCHES ARE TO BE CONSTRUCTED BY OTHERS UNLESS OTHERWISE INDICATED.
 BRIDGES ARE TO BE RESURFACED AT LOCATIONS AND TO DEPTH AS DIRECTED BY THE ENGINEER.

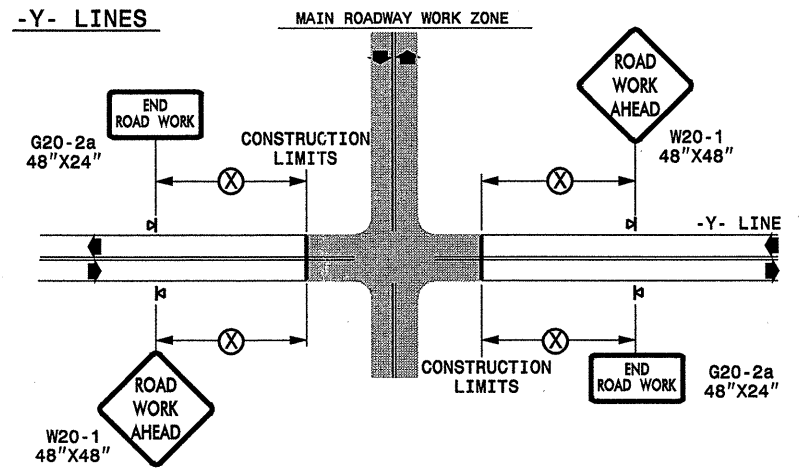
TWO-WAY UNDIVIDED ** (L-LINES)



POSTED SPEED LIMIT (M.P.H.)	RECOMMENDED MINIMUM SIGN SPACING
≤ 50	500'
≥ 55	1000'

STATE OF NORTH CAROLINA
DEPT. OF TRANSPORTATION
DIVISION OF HIGHWAYS
RALEIGH, N.C.

ROADWAYS INTERSECTING ALONG 2 WAY UNDIVIDED WORK ZONE (Y-LINES)



GENERAL NOTES

- USE FLUORESCENT ORANGE SHEETING (TYPE VII OR HIGHER) ON ALL ADVANCED WORK ZONE SIGNS.
- DO NOT INSTALL ADVANCE WARNING SIGNS MORE THAN 3 DAYS PRIOR TO BEGINNING OF WORK.
- ALL SIGN SPACING DIMENSIONS ARE APPROXIMATE, FIELD ADJUST AS NECESSARY OR AS DIRECTED.
- USE PORTABLE WORK ZONE SIGNS ONLY WITH PORTABLE WORK ZONE SIGN STANDS SPECIFICALLY DESIGNED FOR ONE ANOTHER. PORTABLE WORK ZONE SIGNS MAY BE ROLL UP OR APPROVED COMPOSITE.
- PROVIDE PORTABLE WORK ZONE SIGN STANDS, PORTABLE SIGNS AND SIGN SHEETING WHICH ARE LISTED ON THE NORTH CAROLINA DEPARTMENT OF TRANSPORTATION'S APPROVED PRODUCT LIST OR ACCEPTED AS TRAFFIC QUALIFIED BY THE TRAFFIC CONTROL UNIT.
- ** TWO-WAY UNDIVIDED ADVANCE WARNING SIGN CONFIGURATION MAY BE USED ON URBAN MULTI-LANE FACILITIES WHERE CONDITIONS LIMIT THE USE OF DUAL MOUNTED SIGNS AS DETERMINED BY THE ENGINEER.

LEGEND

⊗ PORTABLE SIGN

➔ DIRECTION OF TRAFFIC FLOW

DETAIL DRAWING
FOR TWO-WAY UNDIVIDED
WORK ZONE WARNING SIGNS

SHEET 1 OF 1

APPROVED: _____	DATE: _____	DETAIL DRAWING FOR TWO-WAY UNDIVIDED ADVANCED WORK ZONE WARNING SIGNS	
SCALE: NONE		REVISIONS	
DATE: _____		7-98	10/01
DWG. BY: _____		10-98	03/04
DESIGN BY: _____		01/01	11/04
REVIEWED BY: _____		500 FILE	

20-NOV-2007 12:44
 \L001\DFSR00TON\groups-WZTCCC\design\group4\resur-facing\resur-facing2007\div13\c20980_13cr059165etrc.mcdowell.nc183etrc\c20980_13cr1059165etrc_2wayundivurbfrwysjuly2006.dgn
 pseymore AT WZTCC231502