

APPENDIX D.2E - PHOTOGRAPHS - HIGH BENT CORES

High Bent Core Photographs - Set D.2E



Core 13 - 1.JPG



Core 13 - 2.JPG



Core 13 - 3.JPG



Core 13 - 4.JPG

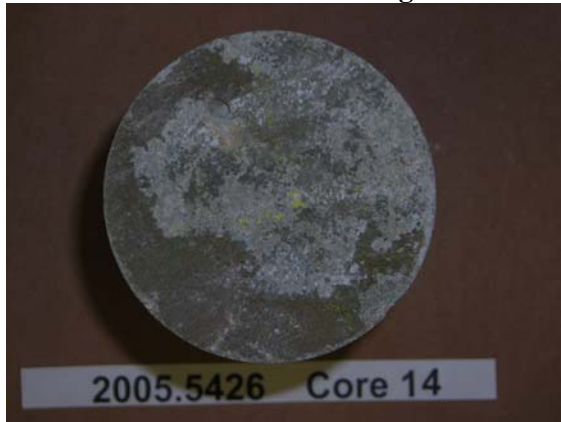


Core 14 - 1.JPG

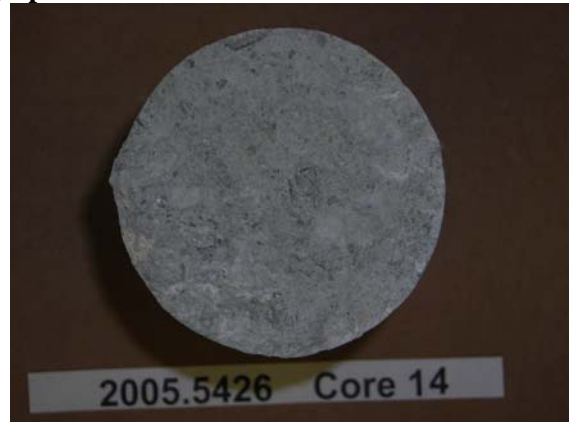


Core 14 - 2.JPG

High Bent Core Photographs - Set D.2E



Core 14 - 3.JPG



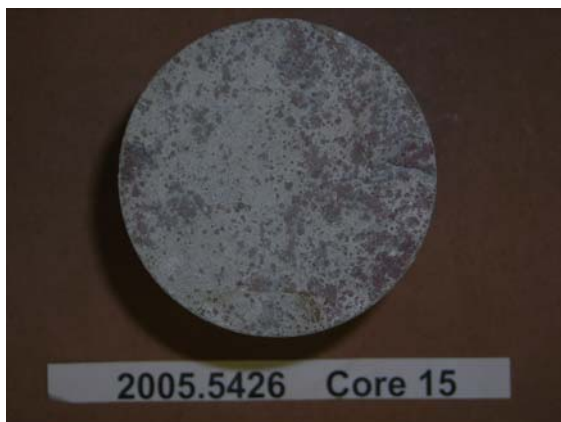
Core 14 - 4.JPG



Core 15 - 1.JPG



Core 15 - 2.JPG



Core 15 - 3.JPG



Core 15 - 4.JPG

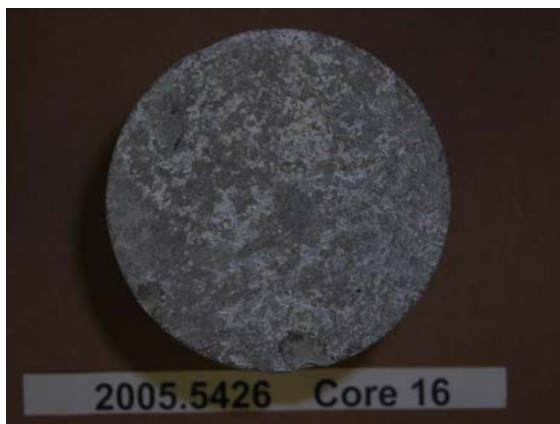
High Bent Core Photographs - Set D.2E



Core 16 - 1.JPG



Core 16 - 2.JPG



Core 16 - 3.JPG



Core 16 - 4.JPG

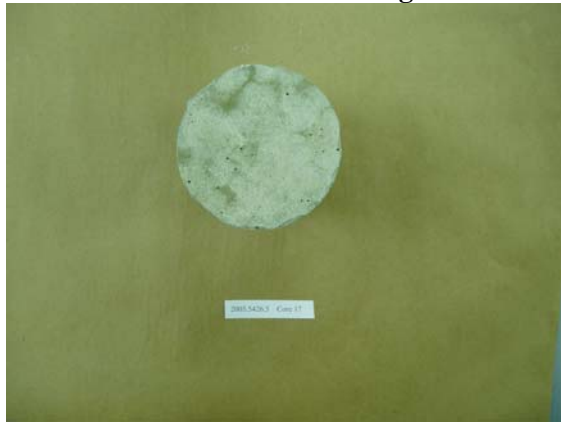


Core 17 - 1.JPG

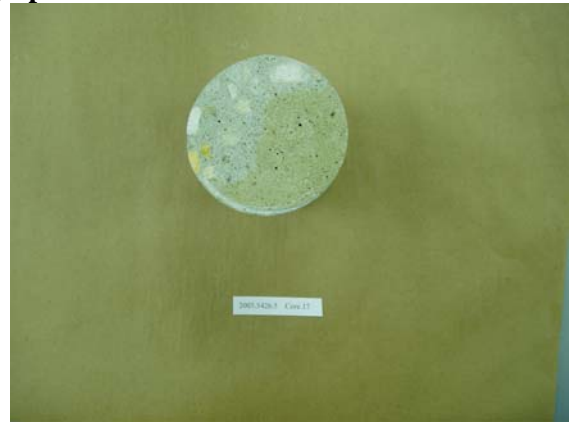


Core 17 - 2.JPG

High Bent Core Photographs - Set D.2E



Core 17 - 3.JPG



Core 17 - 4.JPG



Core 18 - 1.JPG



Core 18 - 2.JPG



Core 18 - 3.JPG



Core 18 - 4.JPG

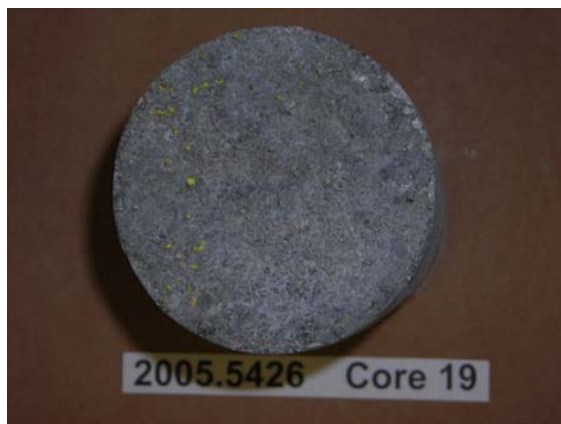
High Bent Core Photographs - Set D.2E



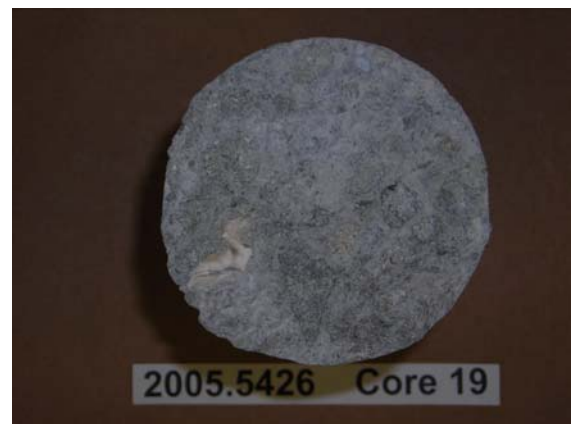
Core 19 - 1.JPG



Core 19 - 2.JPG



Core 19 - 3.JPG



Core 19 - 4.JPG



Core 19 - 5.JPG

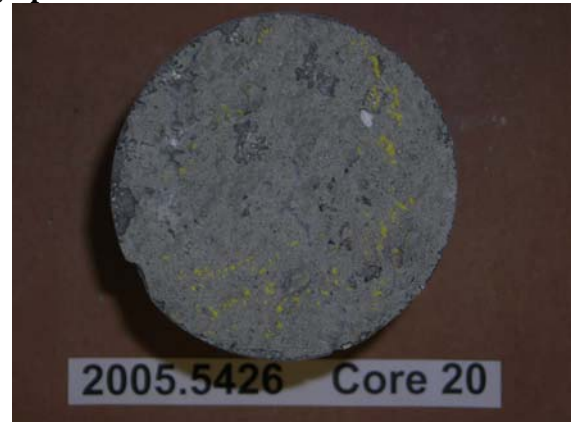


Core 20 - 1.JPG

High Bent Core Photographs - Set D.2E



Core 20 - 2.JPG



Core 20 - 3.JPG



Core 20 - 4.JPG



Core 20 - 5.JPG



Core 21 - 1.JPG



Core 21 - 2.JPG

High Bent Core Photographs - Set D.2E



Core 21 - 3.JPG



Core 21 - 4.JPG



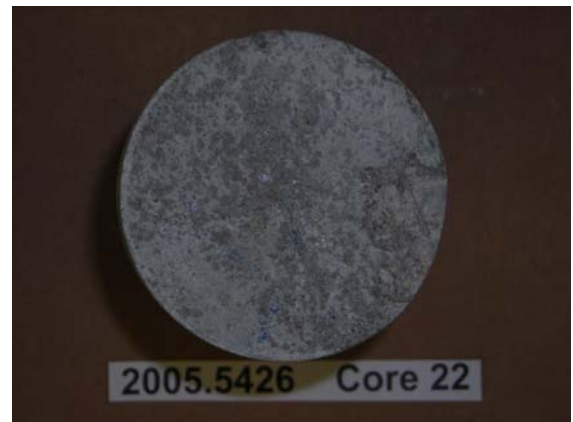
Core 21 - 5.JPG



Core 22 - 1.JPG

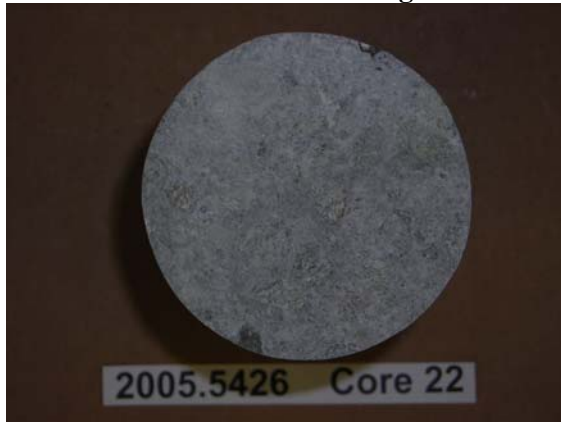


Core 22 - 2.JPG



Core 22 - 3.JPG

High Bent Core Photographs - Set D.2E



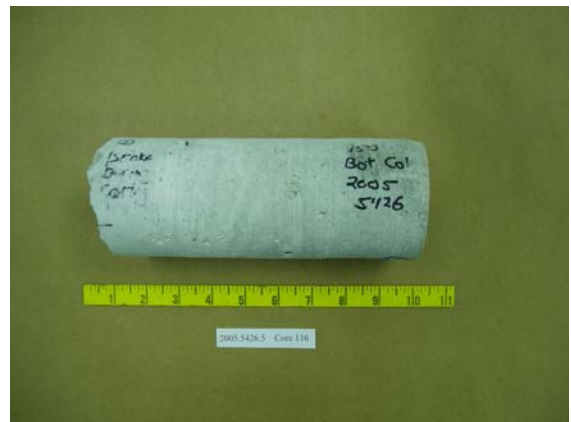
Core 22 - 4.JPG



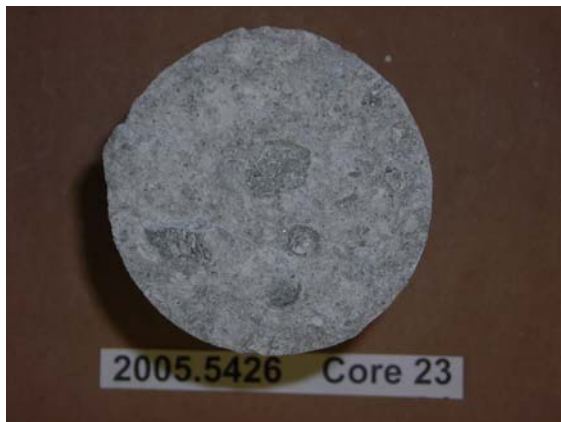
Core 23 - 1.JPG



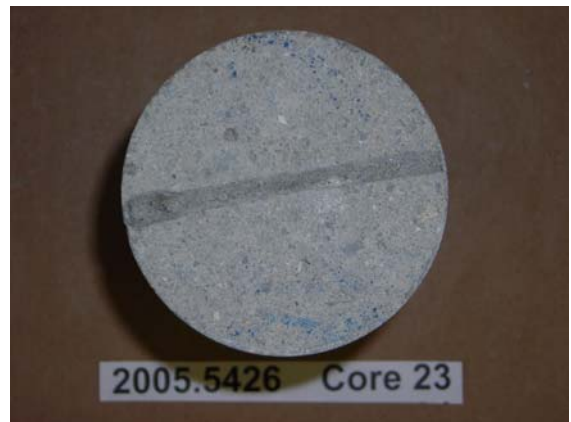
Core 23 - 2.JPG



Core 23 - 3.JPG



Core 23 - 4.JPG



Core 23-3.JPG

High Bent Core Photographs - Set D.2E



Core 24 - 1.JPG



Core 24 - 2.JPG



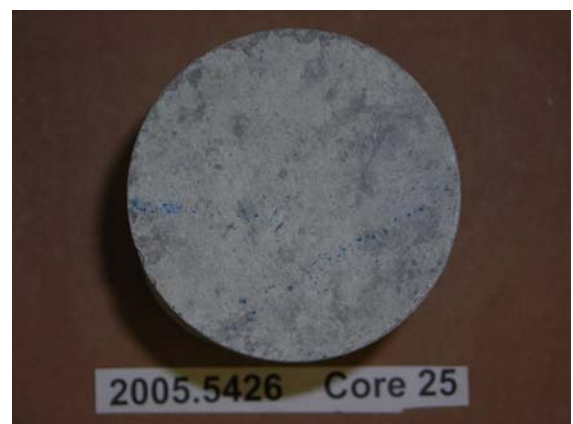
Core 24 - 3.JPG



Core 24 - 4.JPG

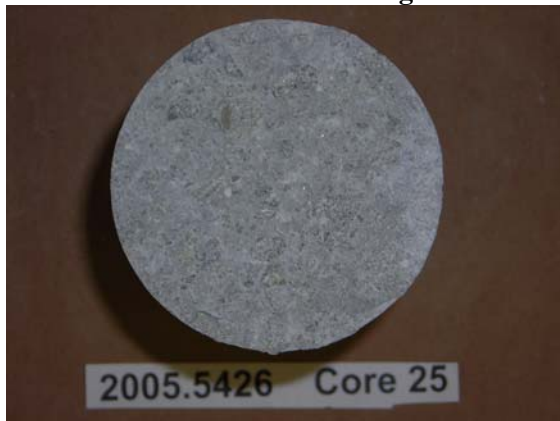


Core 25 - 2.JPG



Core 25 - 3.JPG

High Bent Core Photographs - Set D.2E



Core 25 - 4.JPG



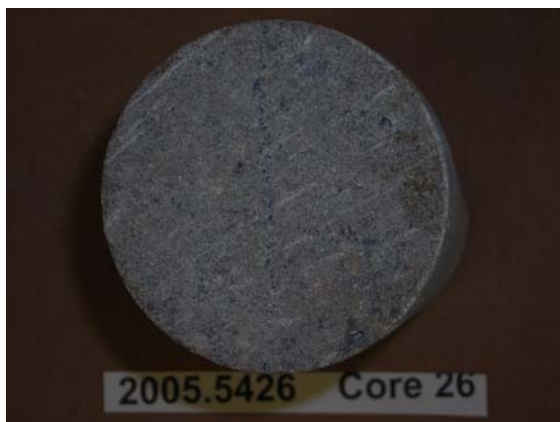
Core 25 - 1.JPG



Core 26 - 1.JPG



Core 26 - 2.JPG



Core 26 - 3.JPG



Core 26 - 4.JPG

High Bent Core Photographs - Set D.2E



Core 27 - 2.JPG



Core 27 - 3.JPG



Core 27 - 4.JPG



Core 27 - 5.JPG

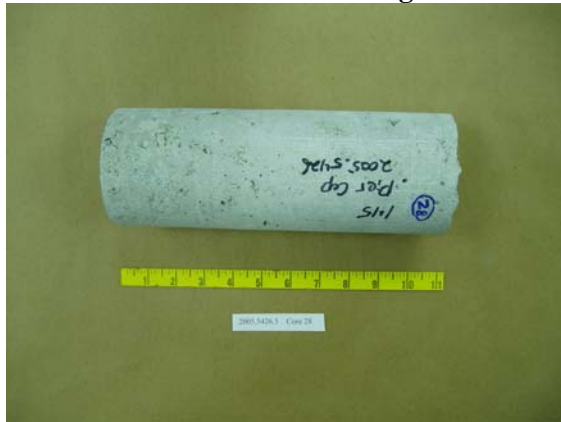


Core 27 - 1.JPG

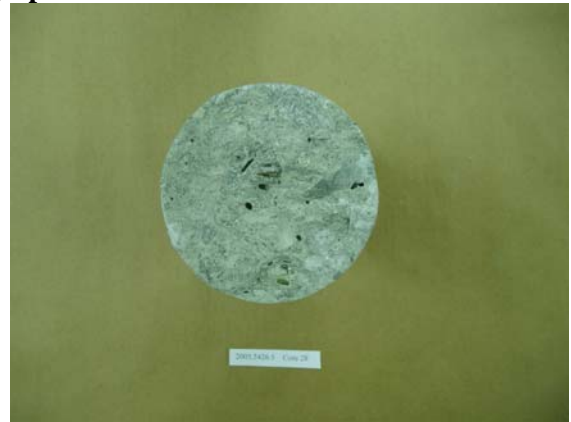


Core 28 - 1.JPG

High Bent Core Photographs - Set D.2E



Core 28 - 2.JPG



Core 28 - 3.JPG



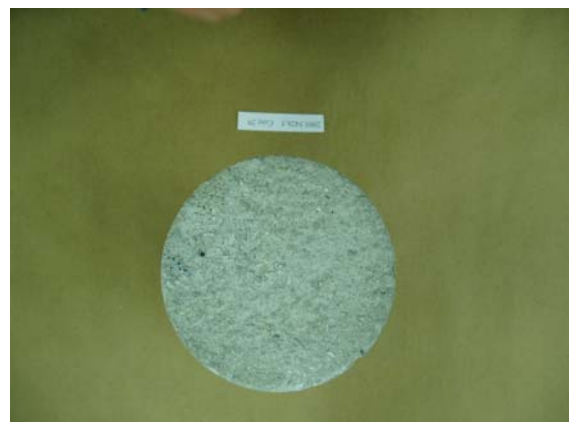
Core 28 - 4.JPG



Core 29 - 1.jpg

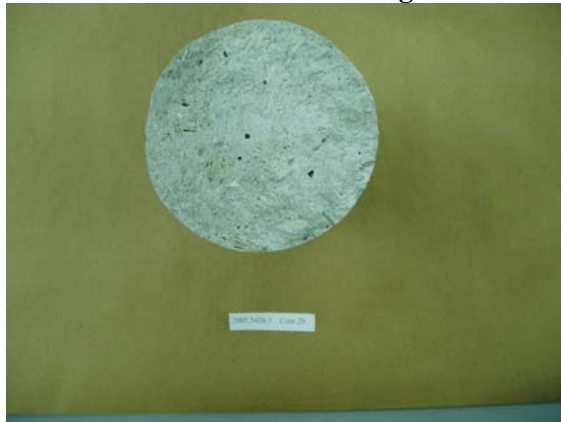


Core 29 - 2.JPG



Core 29 - 3.JPG

High Bent Core Photographs - Set D.2E



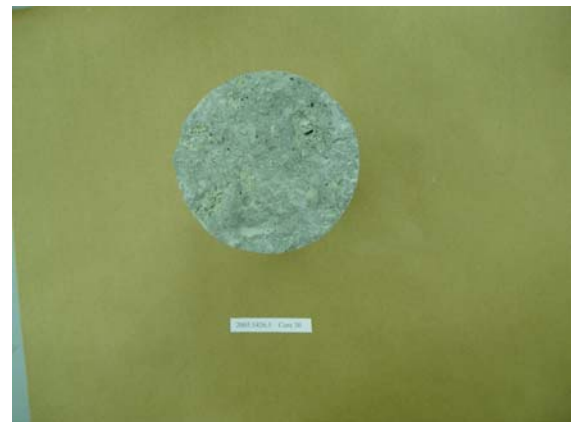
Core 29 - 4.JPG



Core 30 - 1.JPG



Core 30 - 2.JPG



Core 30 - 3.JPG

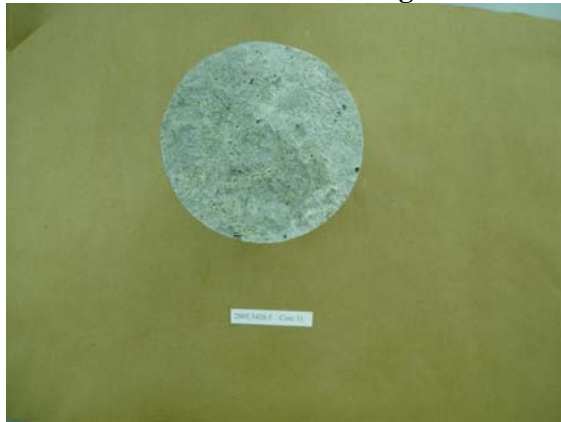


Core 30 - 4.JPG

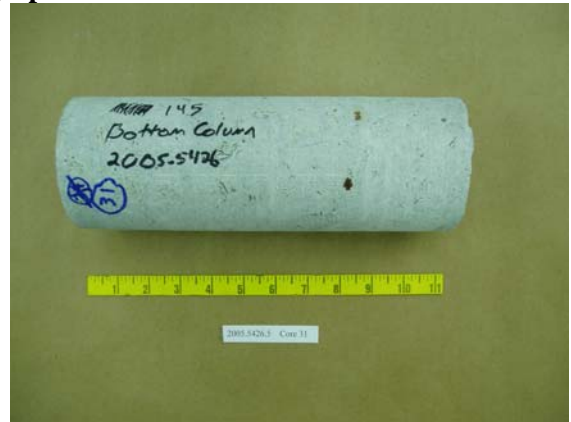


Core 31 - 1.JPG

High Bent Core Photographs - Set D.2E



Core 31 - 2.JPG



Core 31 - 3.JPG



Core 31 - 4.JPG



Core 32 - 1.JPG

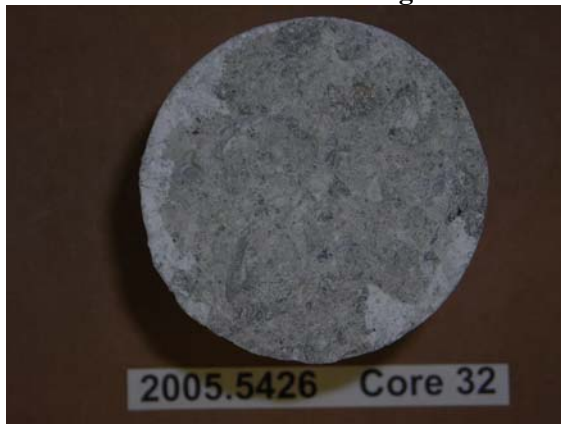


Core 32 - 2.JPG



Core 32 - 3.JPG

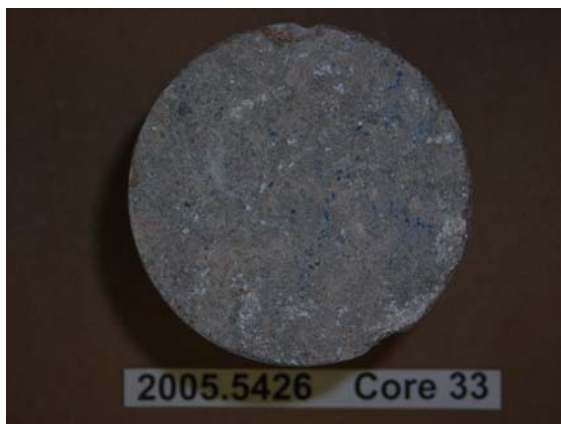
High Bent Core Photographs - Set D.2E



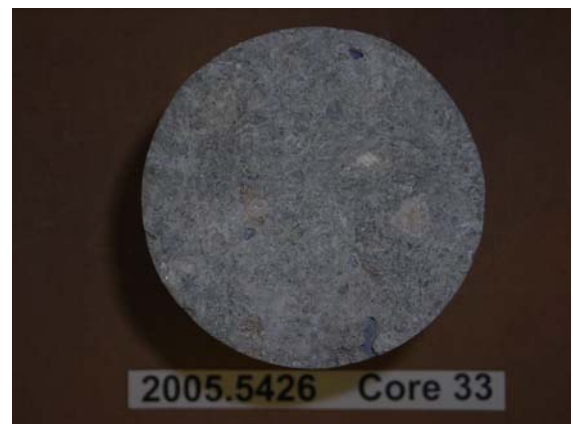
Core 32 - 4.JPG



Core 33 - 2.JPG



Core 33 - 3.JPG



Core 33 - 4.JPG



Core 33 - 1.JPG

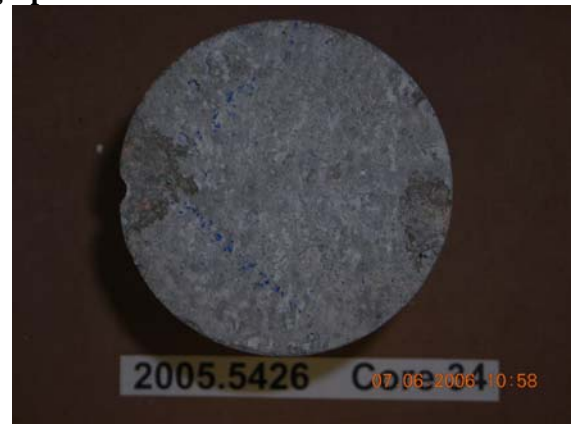


Core 34 - 1.JPG

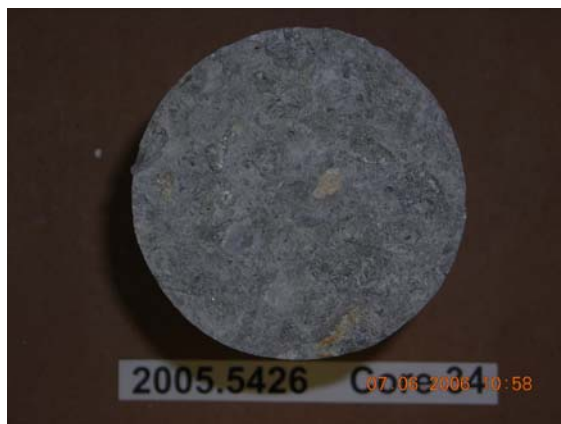
High Bent Core Photographs - Set D.2E



Core 34 - 2.JPG



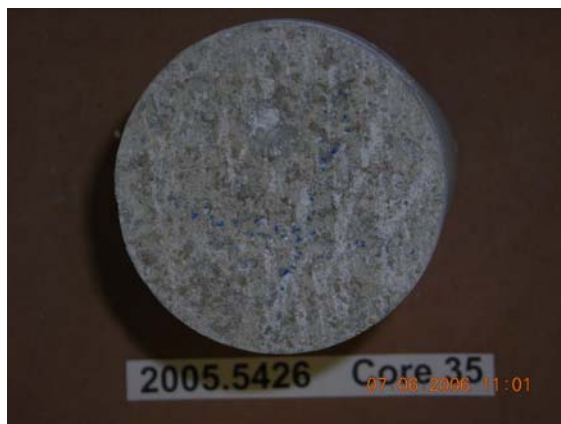
Core 34 - 3.JPG



Core 34 - 4.JPG



Core 35 - 2.JPG



Core 35 - 3.JPG



Core 35 - 4.JPG

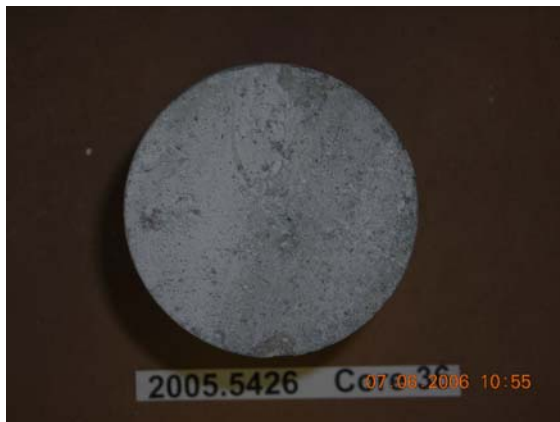
High Bent Core Photographs - Set D.2E



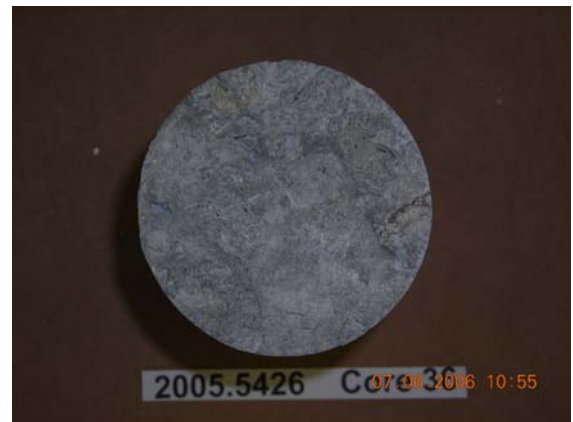
Core 35 -1.JPG



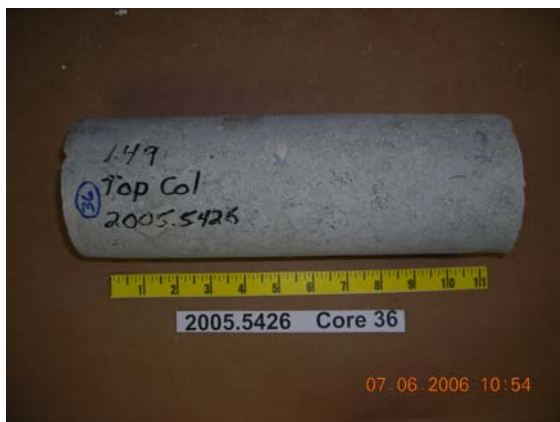
Core 36 - 2.JPG



Core 36 - 3.JPG



Core 36 - 4.JPG



Core 36 -1.JPG



Core 37 - 1.JPG

High Bent Core Photographs - Set D.2E



Core 37 - 2.JPG



Core 37 - 3.JPG



Core 37 - 4.JPG



Core 38 - 1.JPG

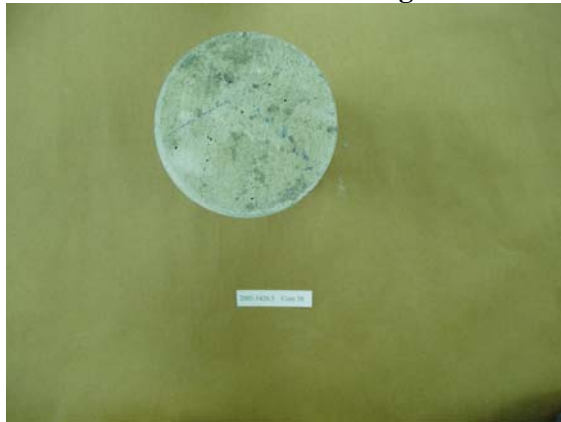


Core 38 - 2.JPG



Core 38 - 3.JPG

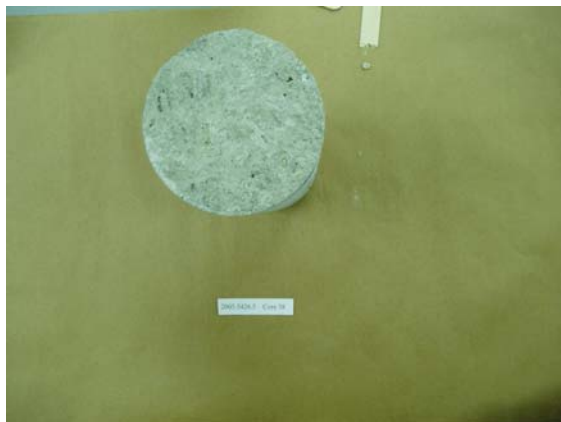
High Bent Core Photographs - Set D.2E



Core 38 - 4.JPG



Core 38 - 5.JPG



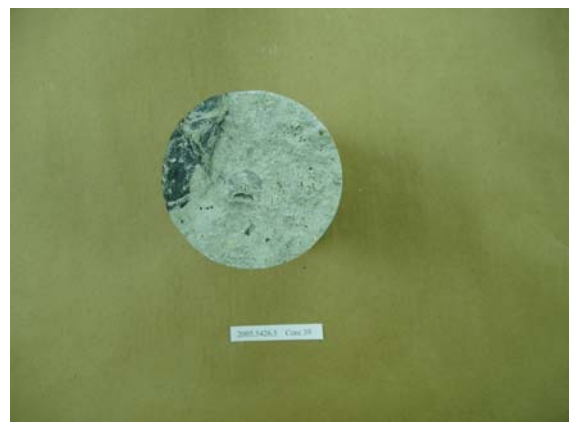
Core 38 - 6.JPG



Core 39 - 1.JPG

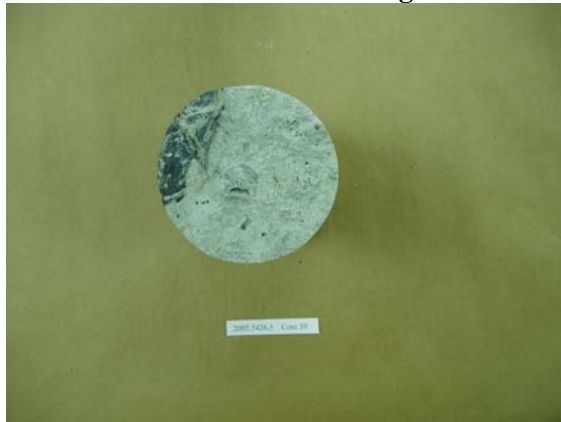


Core 39 - 2.JPG

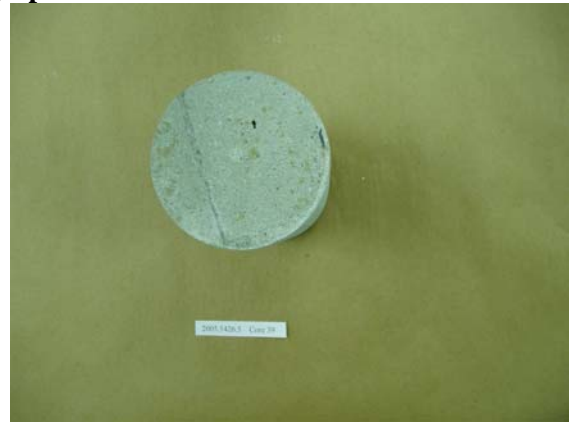


Core 39 - 3.JPG

High Bent Core Photographs - Set D.2E



Core 39 - 4.JPG



Core 39 - 5.JPG



Core 40 - 1.JPG



Core 40 - 2.JPG

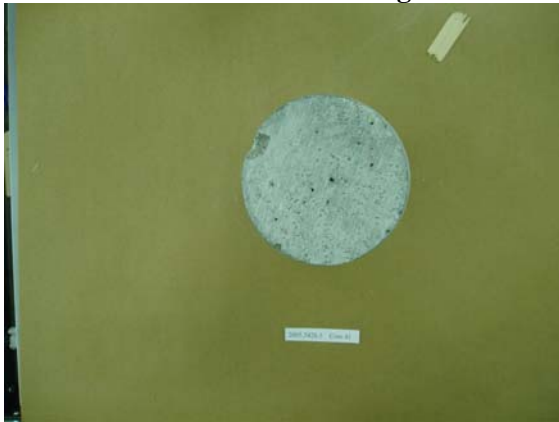


Core 40 - 3.JPG



Core 40 - 4.JPG

High Bent Core Photographs - Set D.2E



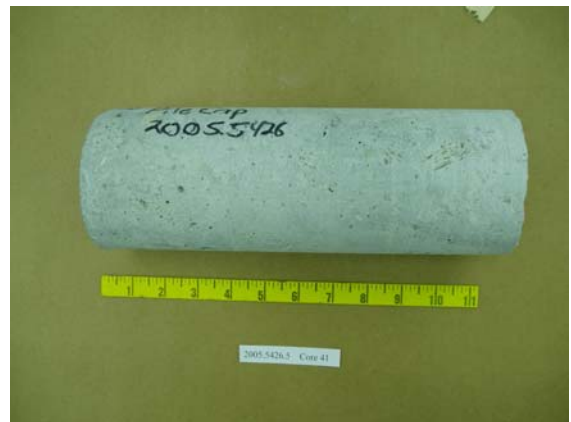
Core 41 - 1.JPG



Core 41 - 2.JPG



Core 41 - 3.JPG



Core 41 - 4.JPG



Core 42 - 1.JPG

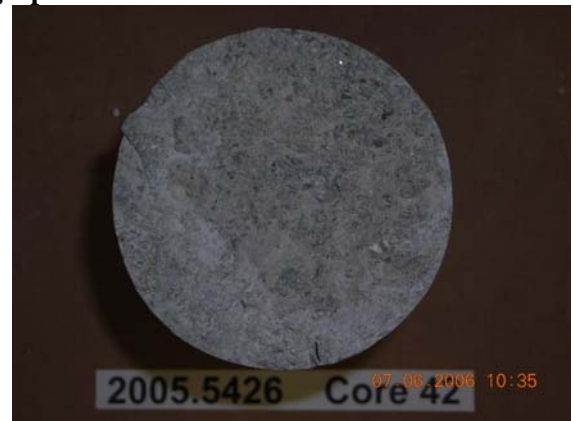


Core 42 - 2.JPG

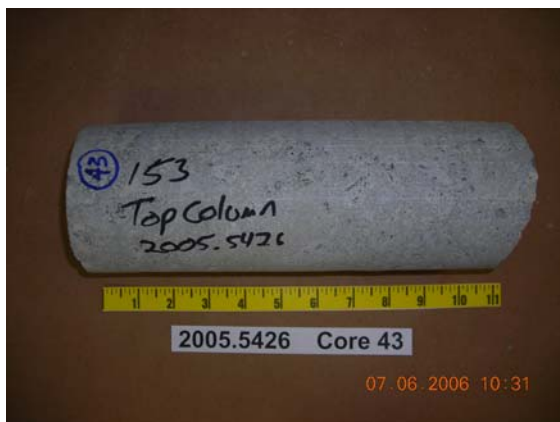
High Bent Core Photographs - Set D.2E



Core 42 - 3.JPG



Core 42 - 4.JPG



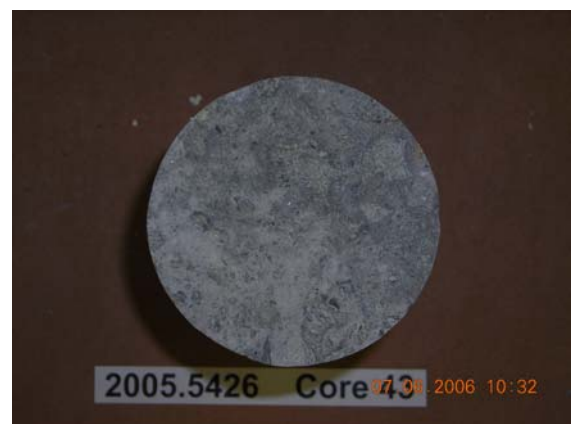
Core 43 - 1.JPG



Core 43 - 2.JPG



Core 43 - 3.JPG



Core 43 - 4.JPG

High Bent Core Photographs - Set D.2E



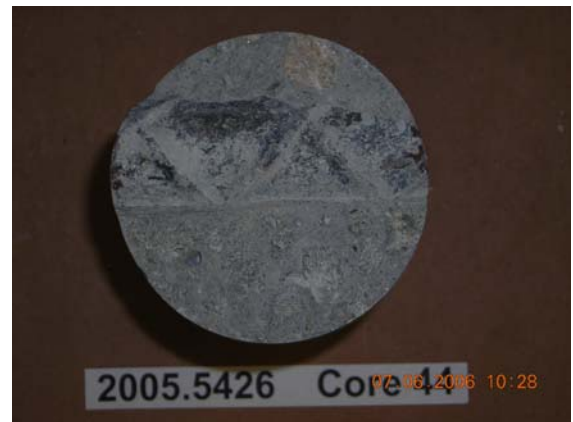
Core 44 - 1.JPG



Core 44 - 2.JPG



Core 44 - 3.JPG



Core 44 - 4.JPG



Core 45 - 1.JPG

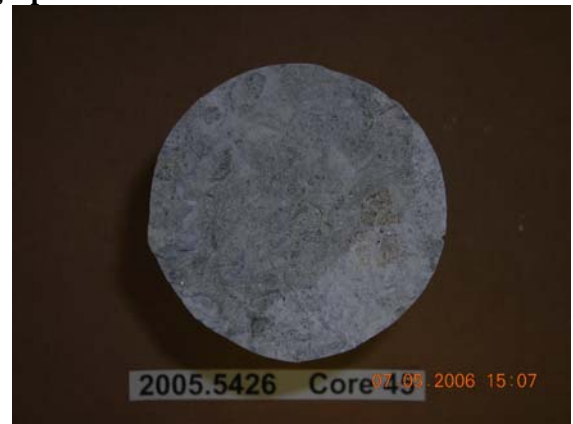


Core 45 - 2.JPG

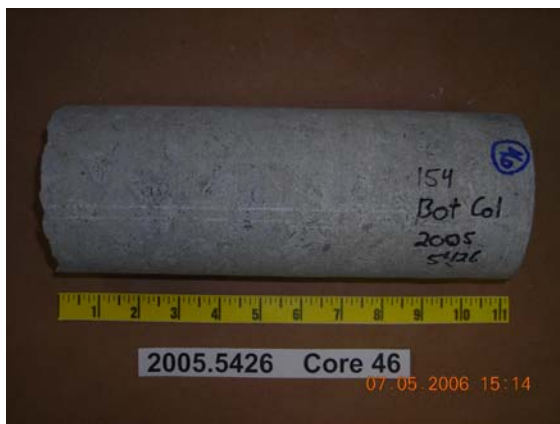
High Bent Core Photographs - Set D.2E



Core 45 - 3.JPG



Core 45 - 4.JPG



Core 46 - 1.JPG



Core 46 - 2.JPG

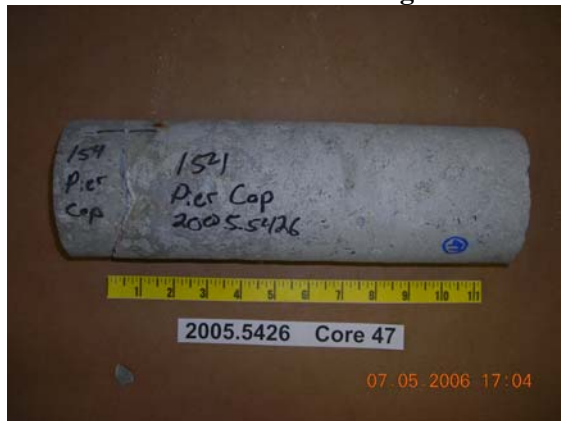


Core 46 - 3.JPG



Core 46 - 4.JPG

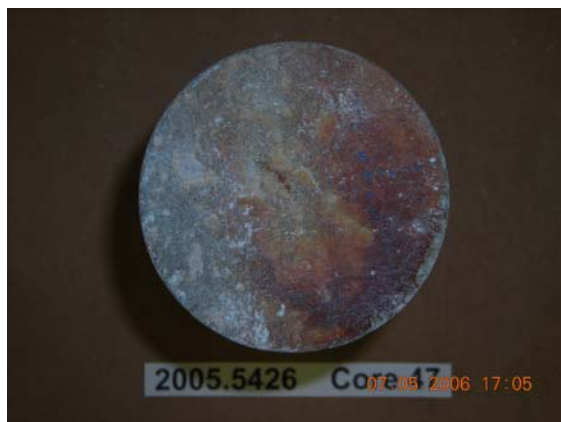
High Bent Core Photographs - Set D.2E



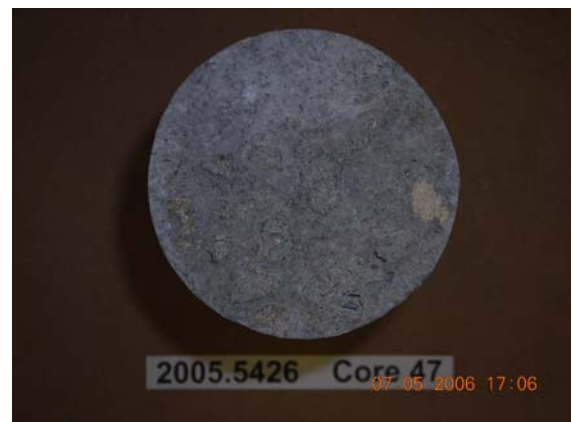
Core 47 - 1.JPG



Core 47 - 2.JPG



Core 47 - 3.JPG



Core 47 - 4.JPG



Core 47 - 5.JPG

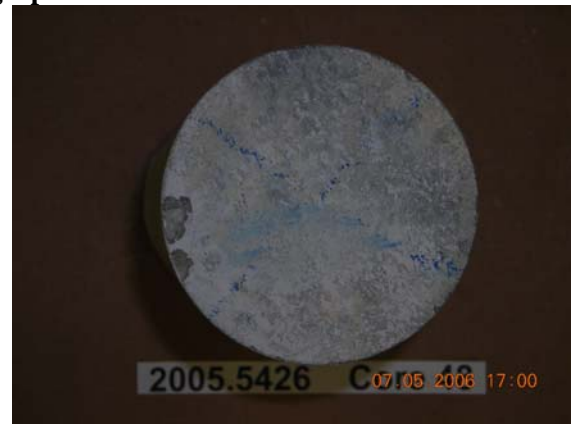


Core 48 - 1.JPG

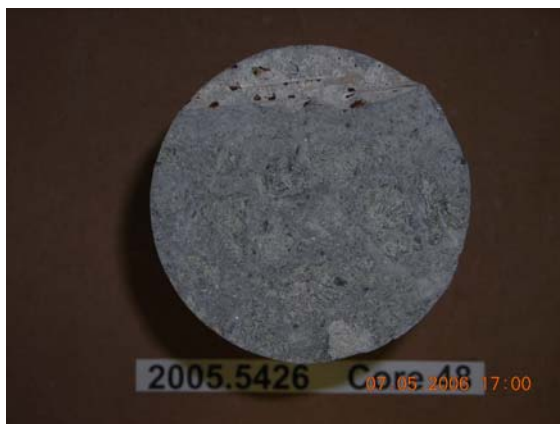
High Bent Core Photographs - Set D.2E



Core 48 - 2.JPG



Core 48 - 3.JPG



Core 48 - 4.JPG



Core 49 - 1.JPG

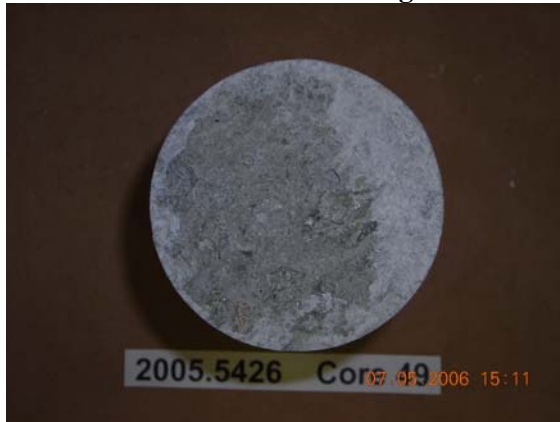


Core 49 - 2.JPG

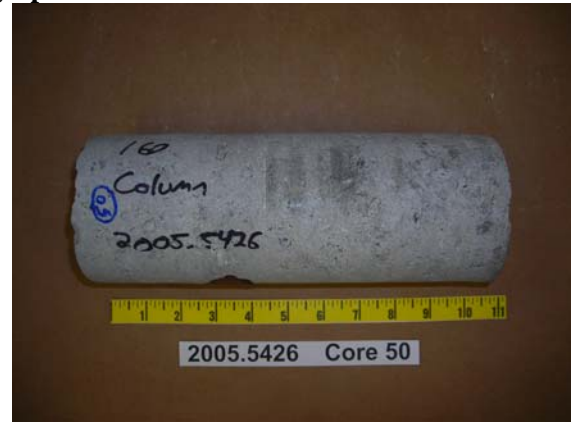


Core 49 - 3.JPG

High Bent Core Photographs - Set D.2E



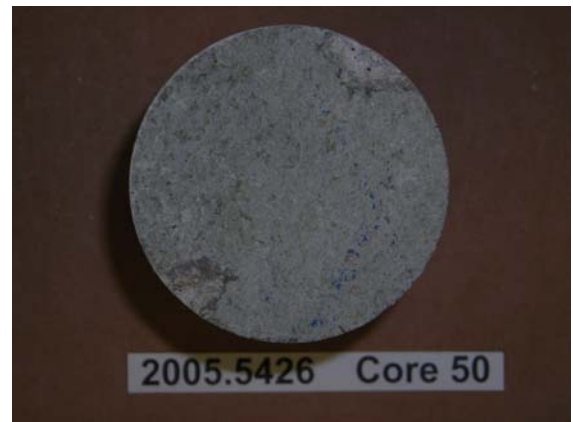
Core 49 - 4.JPG



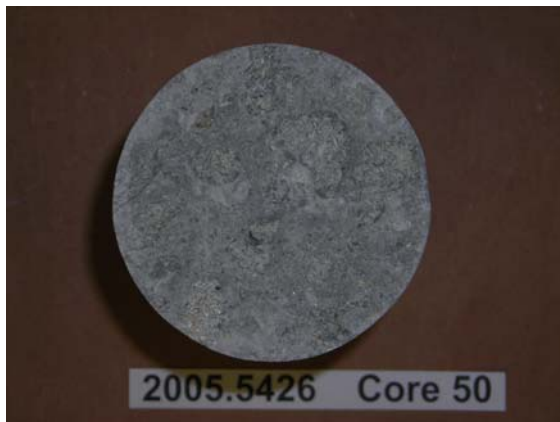
Core 50 - 1.JPG



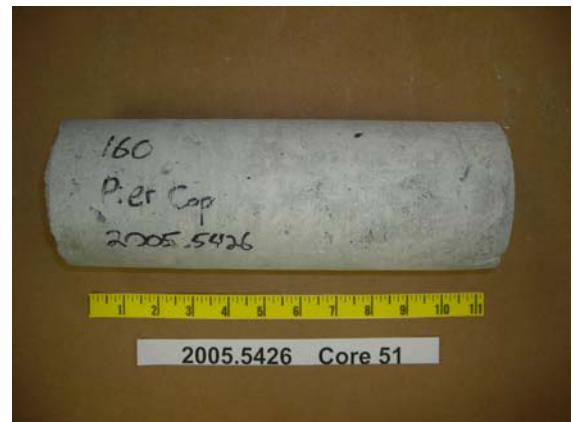
Core 50 - 2.JPG



Core 50 - 3.JPG



Core 50 - 4.JPG

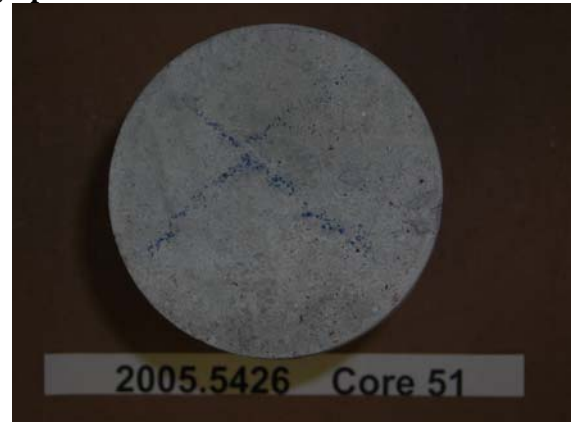


Core 51 - 1.JPG

High Bent Core Photographs - Set D.2E



Core 51 - 2.JPG



Core 51 - 3.JPG



Core 51 - 4.JPG



Core 52 - 1.JPG

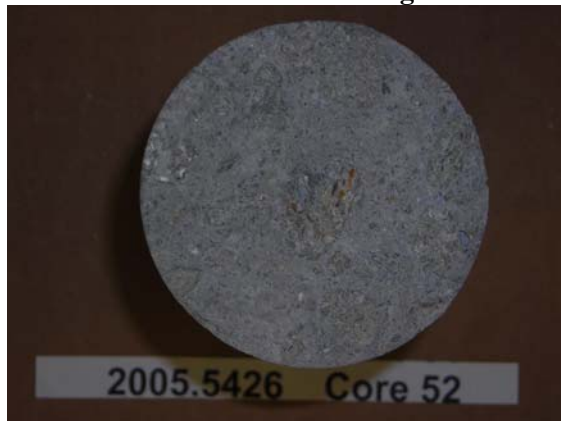


Core 52 - 2.JPG



Core 52 - 3.JPG

High Bent Core Photographs - Set D.2E



Core 52 - 4.JPG



Core 53 - 1.JPG



Core 53 - 2.JPG



Core 53 - 3.JPG



Core 53 - 4.JPG



Core 54 - 1.JPG

High Bent Core Photographs - Set D.2E



Core 54 - 2.JPG



Core 54 - 3.JPG



Core 54 - 4.JPG



Core 55 - 1.JPG



Core 55 - 2.JPG



Core 55 - 3.JPG

High Bent Core Photographs - Set D.2E



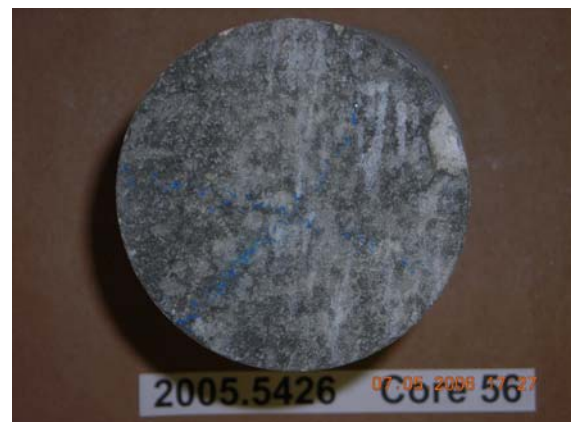
Core 55 - 4.JPG



Core 56 - 1.JPG



Core 56 - 2.JPG



Core 56 - 3.JPG



Core 56 - 4.JPG



Core 57 - 1.JPG

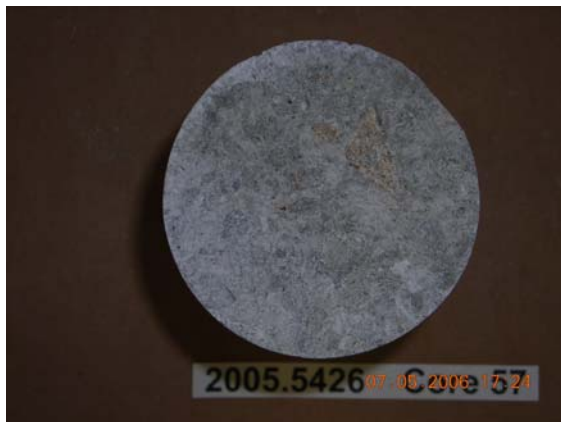
High Bent Core Photographs - Set D.2E



Core 57 - 2.JPG



Core 57 - 3.JPG



Core 57 - 4.JPG



Core 58 - 1.JPG

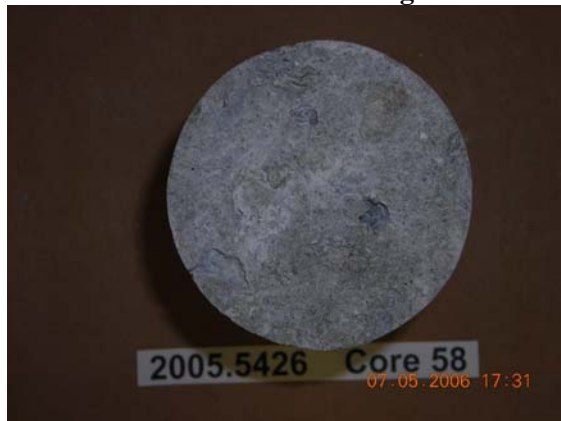


Core 58 - 2.JPG



Core 58 - 3.JPG

High Bent Core Photographs - Set D.2E



Core 58 - 4.JPG



Core 59 - 1.JPG



Core 59 - 2.JPG



Core 59 - 3.JPG



Core 59 - 4.JPG



Core 60 - 1.JPG

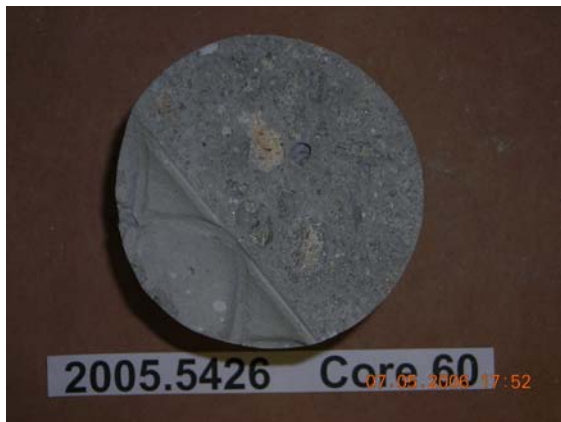
High Bent Core Photographs - Set D.2E



Core 60 - 2.JPG



Core 60 - 3.JPG



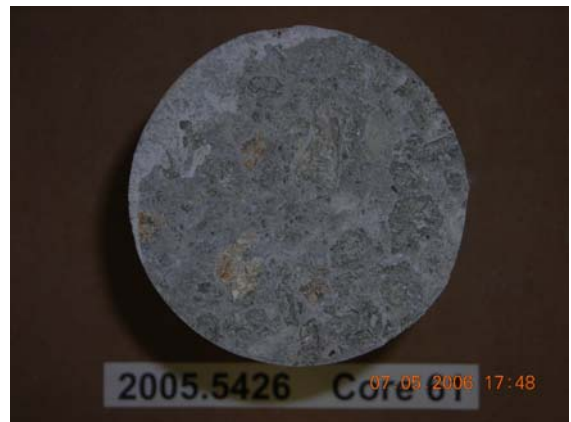
Core 60 - 4.JPG



Core 61 - 2.JPG



Core 61 - 3.JPG



Core 61 - 4.JPG

High Bent Core Photographs - Set D.2E



Core 61 - 1.JPG



Core 62 - 1.JPG



Core 62 - 2.JPG



Core 62 - 3.JPG



Core 62 - 4.JPG

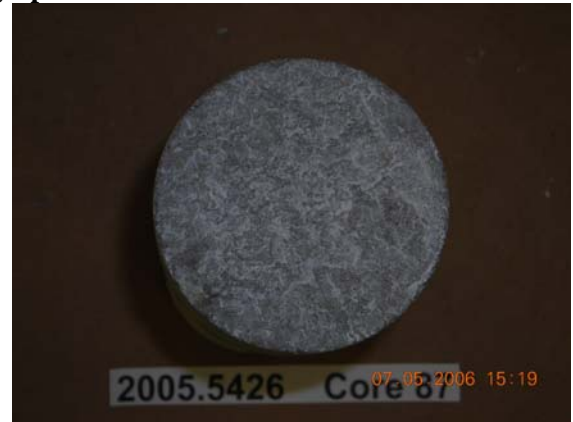


Core 87 - 1.JPG

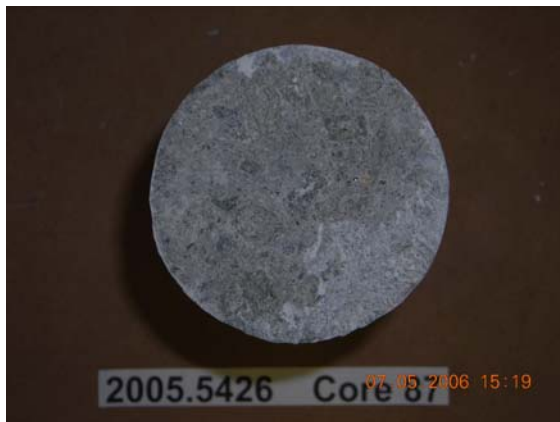
High Bent Core Photographs - Set D.2E



Core 87 - 2.JPG



Core 87 - 3.JPG



Core 87 - 4.JPG



Core 88 - 1.JPG



Core 88 - 2.JPG



Core 88 - 3.JPG

High Bent Core Photographs - Set D.2E



Core 88 - 4.JPG



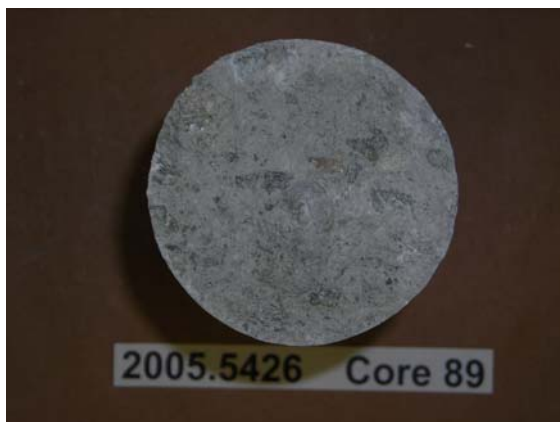
Core 89 - 1.JPG



Core 89 - 2.JPG



Core 89 - 3.JPG



Core 89 - 4.JPG

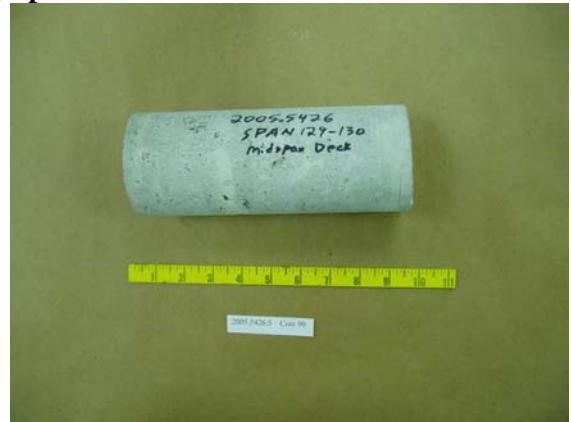


Core 90 - 1.JPG

High Bent Core Photographs - Set D.2E



Core 90 - 2.JPG



Core 90 - 3.JPG



Core 90 - 4.JPG



Core 91 - 1.JPG



Core 91 - 2.JPG

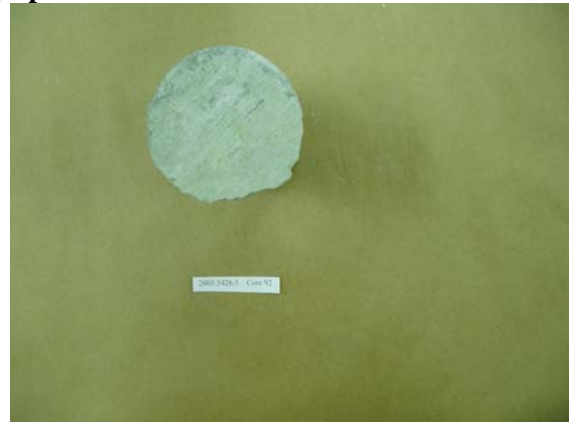


Core 91 - 3.JPG

High Bent Core Photographs - Set D.2E



Core 91 - 4.JPG



Core 92 - 1.JPG



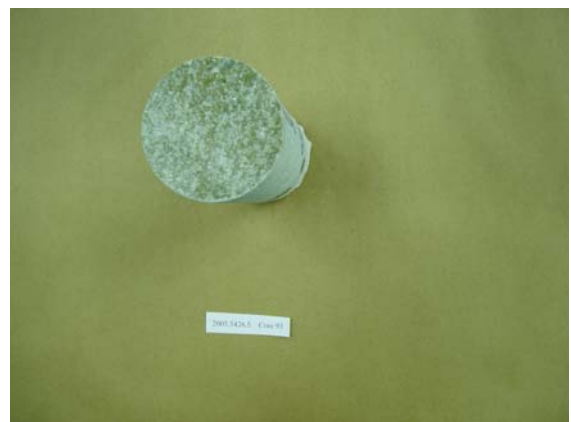
Core 92 - 2.JPG



Core 92 - 3.JPG



Core 92 - 4.JPG



Core 93 - 2.JPG

High Bent Core Photographs - Set D.2E



Core 93 - 3.JPG



Core 93 - 4.JPG



Core 93 - 1.JPG



Core 94 - 1.JPG

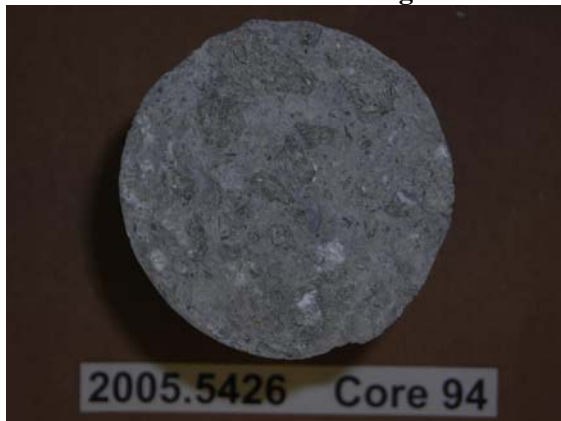


Core 94 - 2.JPG



Core 94 - 3.JPG

High Bent Core Photographs - Set D.2E



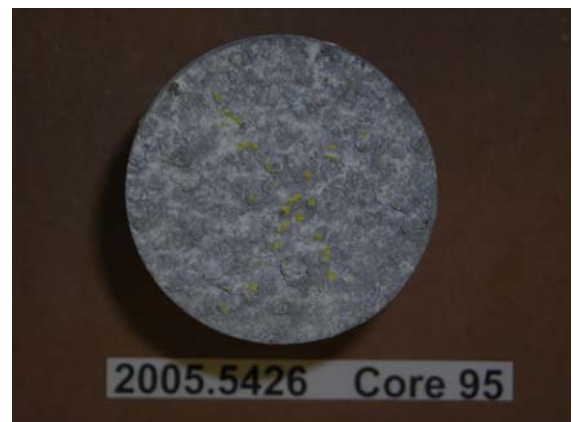
Core 94 - 4.JPG



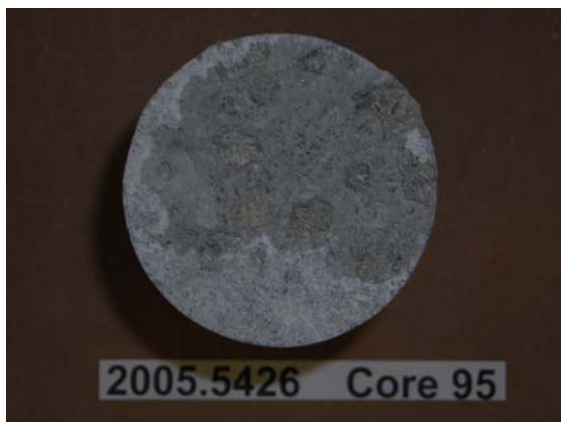
Core 95 - 1.JPG



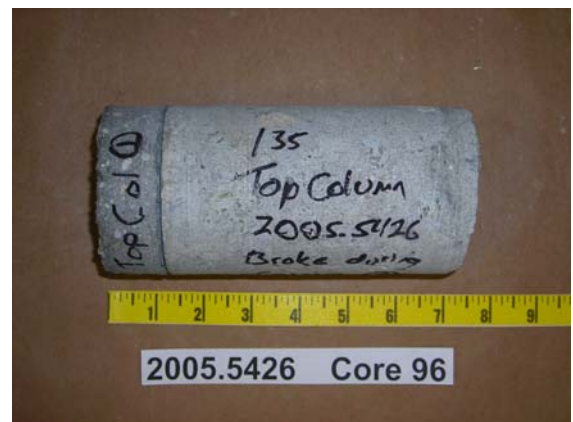
Core 95 - 2.JPG



Core 95 - 3.JPG



Core 95 - 4.JPG



Core 96 - 1.JPG

High Bent Core Photographs - Set D.2E



Core 96 - 2.JPG



Core 96 - 3.JPG



Core 96 - 4.JPG



Core 96 - 5.JPG

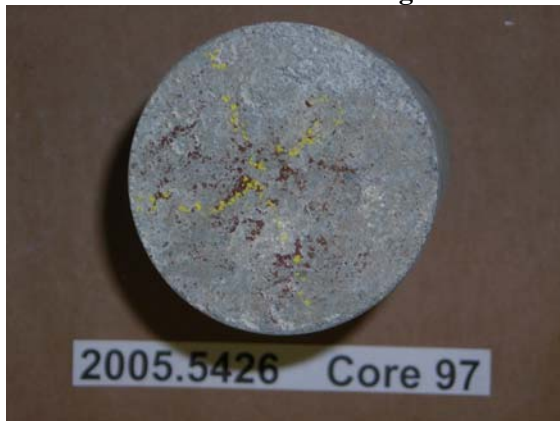


Core 97 - 1.JPG



Core 97 - 2.JPG

High Bent Core Photographs - Set D.2E



Core 97 - 3.JPG



Core 97 - 4.JPG



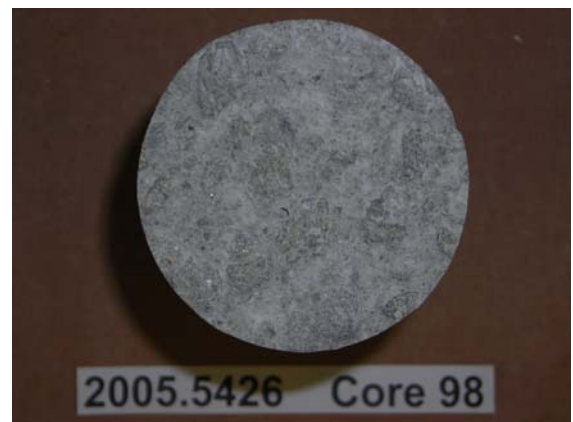
Core 98 - 1.JPG



Core 98 - 2.JPG



Core 98 - 3.JPG



Core 98 - 4.JPG

High Bent Core Photographs - Set D.2E



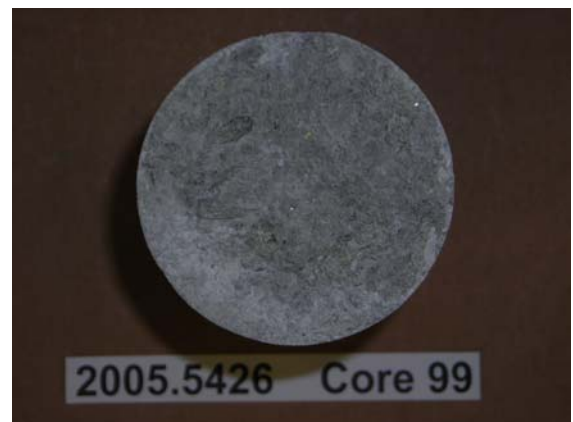
Core 99 - 1.JPG



Core 99 - 2.JPG



Core 99 - 3.JPG



Core 99 - 4.JPG

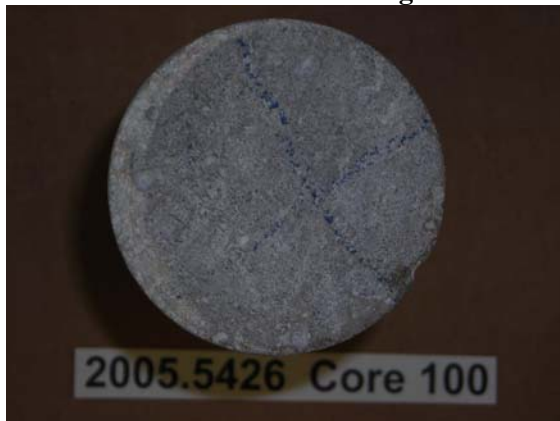


Core 100 - 1.JPG

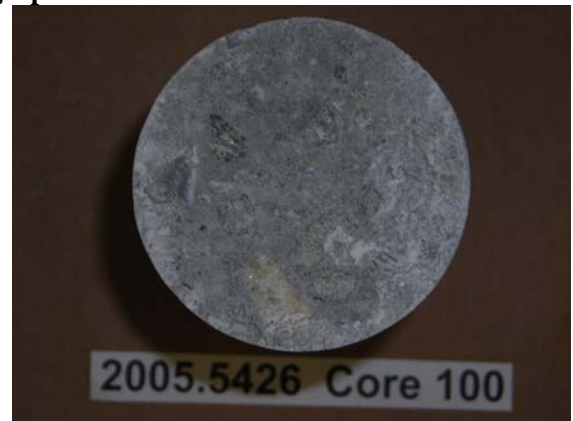


Core 100 - 2.JPG

High Bent Core Photographs - Set D.2E



Core 100 - 3.JPG



Core 100 - 4.JPG



Core 101 - 1.JPG



Core 101 - 2.JPG



Core 101 - 3.JPG



Core 101 - 4.JPG

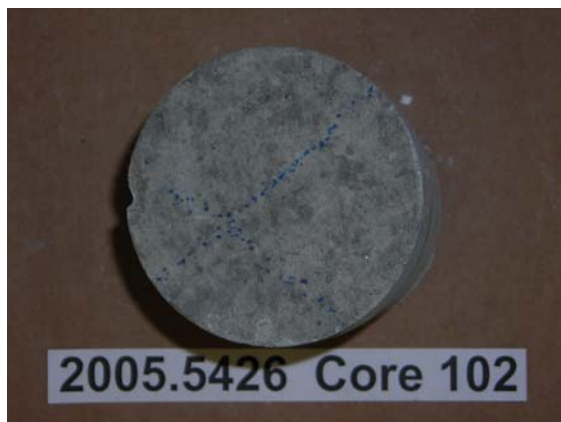
High Bent Core Photographs - Set D.2E



core 102-1.JPG



core 102-2.JPG



core 102-3.JPG



core 102-4.JPG



core 103-4.JPG



core 103-5.JPG

High Bent Core Photographs - Set D.2E



core 103-6.JPG



core 103-7.JPG



core 103-8.JPG



core 104-1.JPG

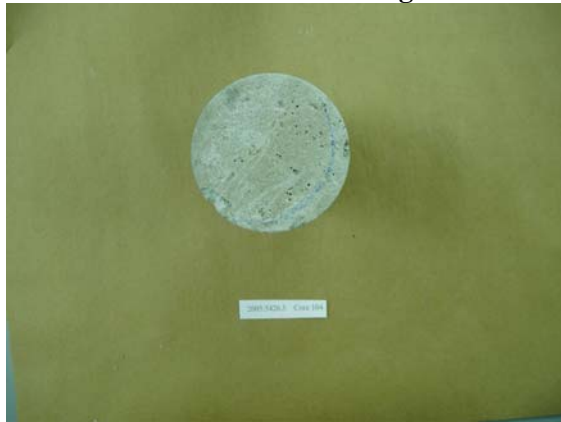


core 104-2.JPG



core 104-3.JPG

High Bent Core Photographs - Set D.2E



core 104-4.JPG



core 105-1.JPG



core 105-2.JPG



Core 105-3.JPG



core 105-4.JPG



core 105-5.JPG

High Bent Core Photographs - Set D.2E



core 106-1.JPG



core 106-2.JPG



core 106-3.JPG



core 106-4.JPG

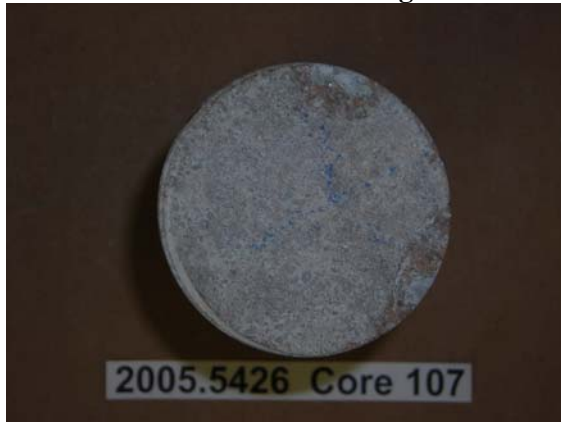


core 107-1.JPG

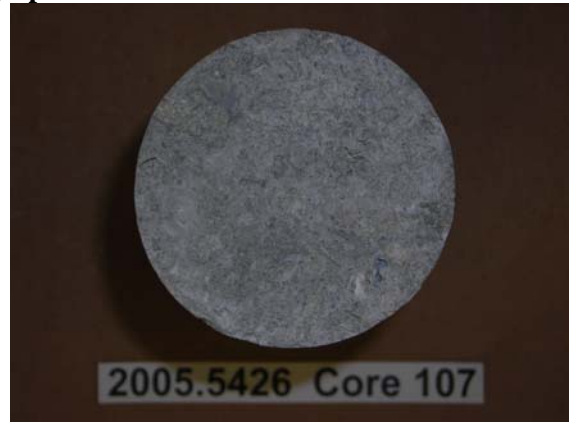


core 107-2.JPG

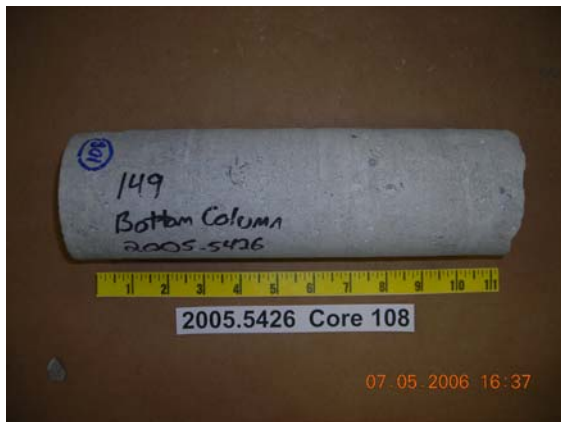
High Bent Core Photographs - Set D.2E



core 107-3.JPG



core 107-4.JPG



core 108-1.JPG



core 108-2.JPG

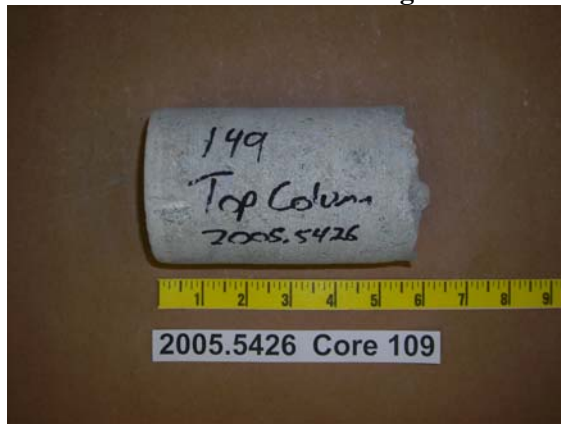


core 108-3.JPG



core 108-4.JPG

High Bent Core Photographs - Set D.2E



core 109-1.JPG



core 109-2.JPG



core 109-3.JPG



core 109-4.JPG



core 109-5.JPG



core 110-1.JPG

High Bent Core Photographs - Set D.2E



core 110-2.JPG



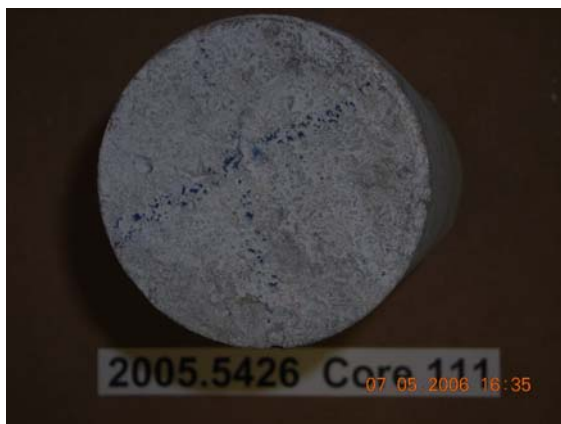
core 110-3.JPG



core 111-1.JPG



core 111-2.JPG



core 111-3.JPG



core 111-4.JPG

High Bent Core Photographs - Set D.2E



core 112-1.JPG



core 112-2.JPG



core 112-3.JPG



core 112-4.JPG



core 113-1.JPG



core 113-2.JPG

High Bent Core Photographs - Set D.2E



core 113-3.JPG



core 113-4.JPG



core 113-5.jpg



core 113-6.jpg



core 113-7.jpg

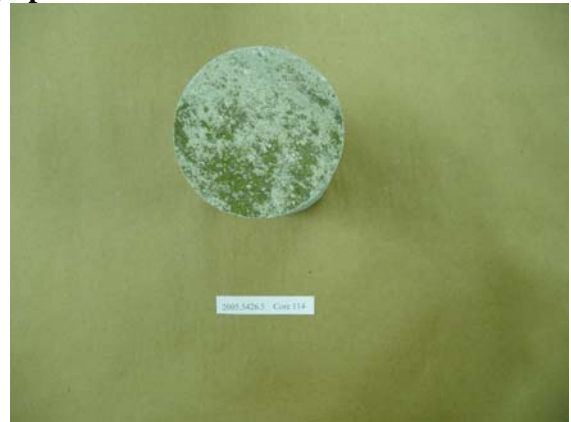


core 114-1.JPG

High Bent Core Photographs - Set D.2E



core 114-2.JPG



core 114-3.JPG



core 114-4.JPG



core 114-5.JPG



core 114-6.JPG

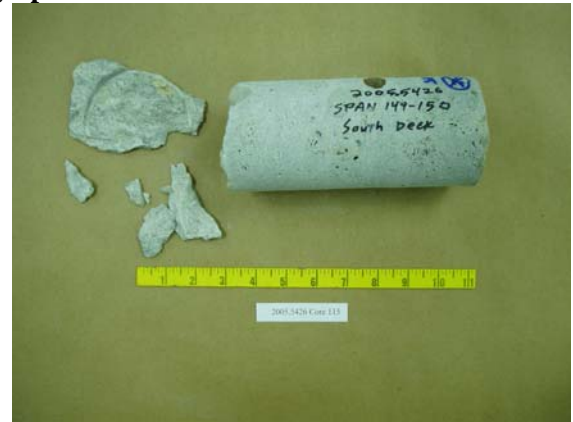


core 114-7.jpg

High Bent Core Photographs - Set D.2E



core 114-8.jpg



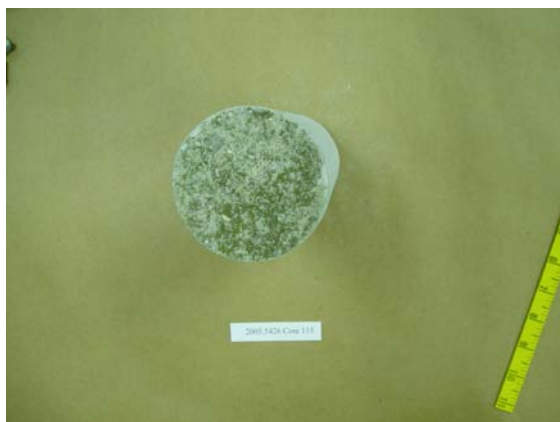
core 115-1.JPG



core 115-2.JPG



core 115-3.JPG

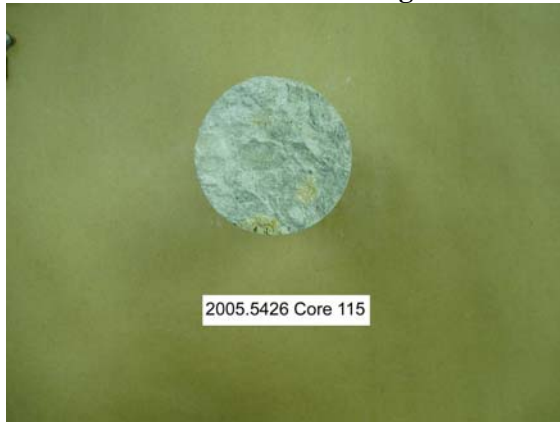


core 115-4.JPG



core 115-5.jpg

High Bent Core Photographs - Set D.2E



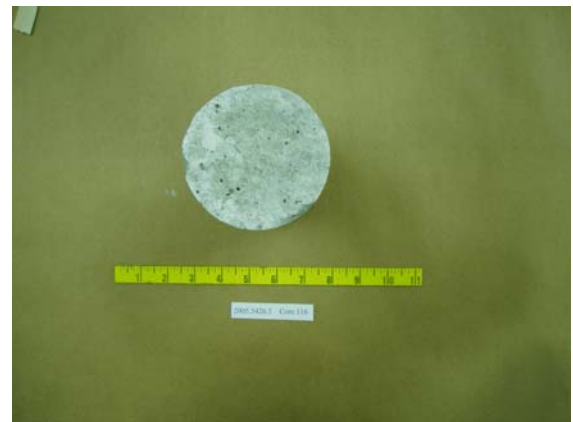
core 115-6.jpg



core 115-7.jpg



core 116-1.JPG



core 116-2.JPG



core 116-3.JPG



core 116-4.JPG

High Bent Core Photographs - Set D.2E



core 116-5.JPG



core 116-6.JPG



core 116-7.JPG



core 116-8.jpg



core 116-9.jpg



core 116-10.jpg

High Bent Core Photographs - Set D.2E



core 117-1.JPG



core 117-2.JPG



core 117-3.JPG



core 117-4.JPG



core 117-5.JPG



core 117-6.jpg

High Bent Core Photographs - Set D.2E



core 117-7.jpg



core 117-8.jpg



core 118-1.jpg



core 118-2.jpg

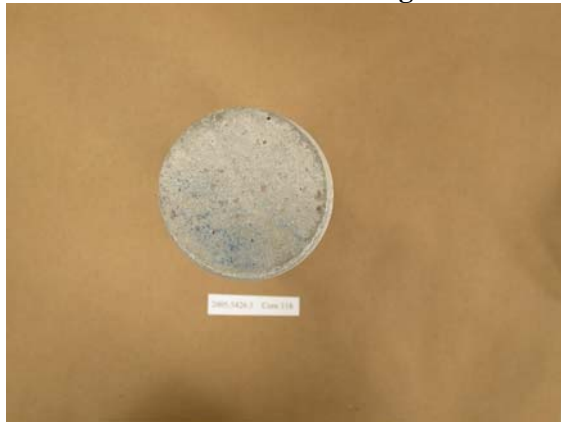


core 118-3.JPG



core 118-4.jpg

High Bent Core Photographs - Set D.2E



core 118-5.jpg



core 118-6.JPG



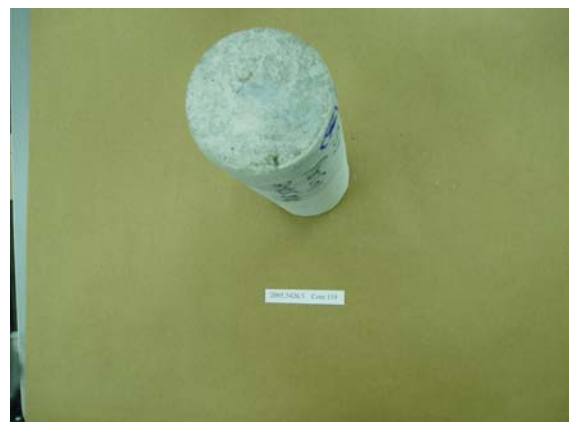
core 118-7.jpg



core 119-1.JPG



core 119-2.JPG

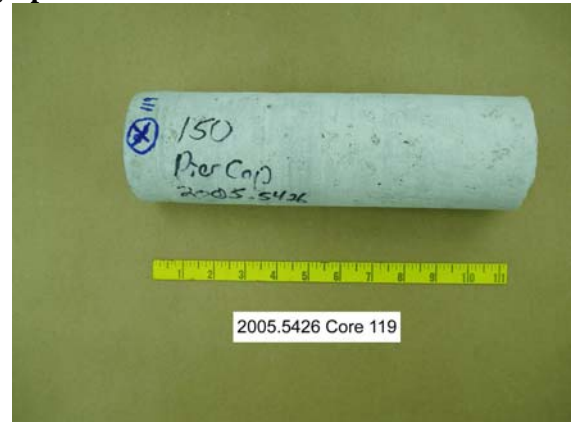


core 119-3.JPG

High Bent Core Photographs - Set D.2E



core 119-4.JPG



core 119-5.jpg



core 119-6.jpg



core 119-7.jpg



core 120-1.JPG



core 120-2.JPG

High Bent Core Photographs - Set D.2E



core 120-3.JPG



core 120-4.JPG



core 120-5.jpg



core 120-6.jpg



core 120-7.jpg



core 121-1.JPG

High Bent Core Photographs - Set D.2E



core 121-2.JPG



core 121-3.JPG



core 121-4.JPG



core 122-1.JPG



core 122-2.JPG



core 122-3.JPG

High Bent Core Photographs - Set D.2E



core 122-4.JPG



core 123-1.JPG



core 123-2.JPG



core 123-3.JPG



core 123-4.JPG



core 124-1.JPG

High Bent Core Photographs - Set D.2E



core 124-2.JPG



core 124-3.JPG



core 124-4.JPG



core 125-1.JPG



core 125-2.JPG



core 125-3.JPG

High Bent Core Photographs - Set D.2E



core 125-4.JPG



core 125-5.JPG



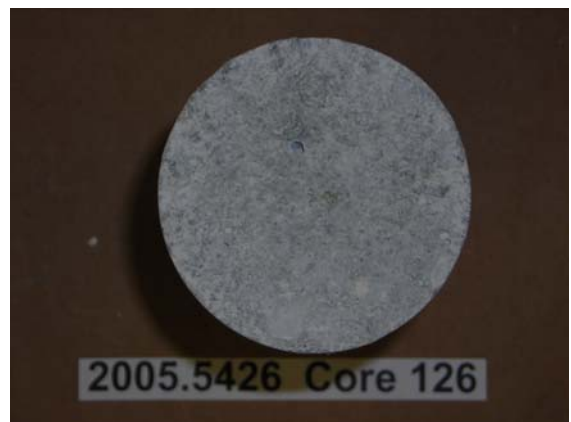
core 126-1.JPG



core 126-2.JPG



core 126-3.JPG



core 126-4.JPG

High Bent Core Photographs - Set D.2E



core 127-1.JPG



core 127-2.JPG



core 127-3.JPG



core 127-4.JPG



core 127-5.JPG

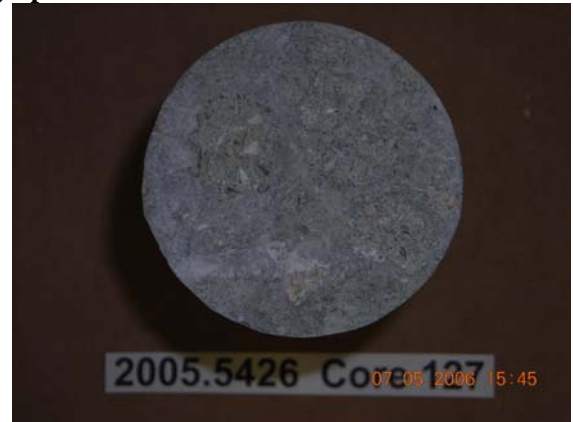


core 127-6.JPG

High Bent Core Photographs - Set D.2E



core 127-7.JPG



core 127-8.JPG



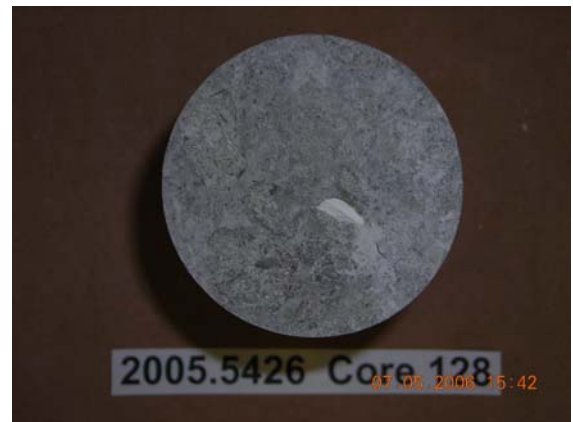
core 128-1.JPG



core 128-2.JPG



core 128-3.JPG



core 128-4.JPG

High Bent Core Photographs - Set D.2E



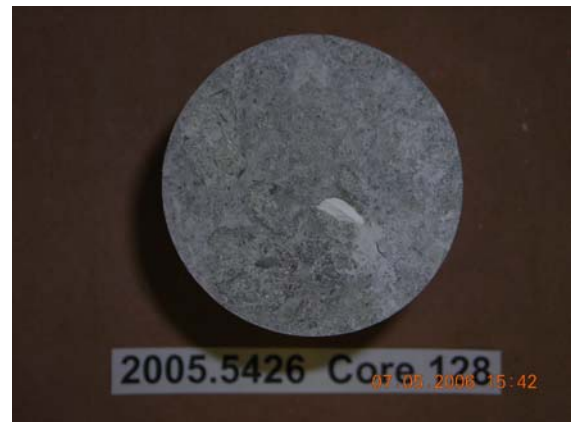
core 128-5.JPG



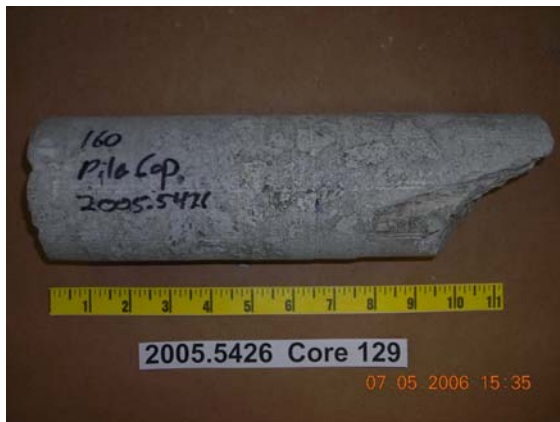
core 128-6.JPG



core 128-7.JPG



core 128-8.JPG



core 129-1.JPG



core 129-2.JPG

High Bent Core Photographs - Set D.2E



core 129-3.JPG



core 129-4.JPG



core 129-5.JPG



core 129-6.JPG

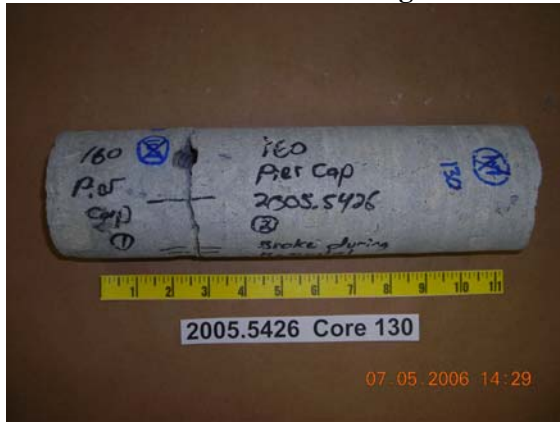


core 129-7.JPG



core 129-8.JPG

High Bent Core Photographs - Set D.2E



core 130-1.JPG



core 130-2.JPG



core 130-3.JPG



core 130-4.JPG



core 130-5.JPG



core 131-1.JPG

High Bent Core Photographs - Set D.2E



core 131-2.JPG



core 131-3.JPG



core 131-4.JPG



core 132-1.JPG



core 132-2.JPG



core 132-3.JPG

High Bent Core Photographs - Set D.2E



core 132-4.JPG



core 133-1.JPG



core 133-2.JPG



core 133-3.JPG



core 133-4.JPG

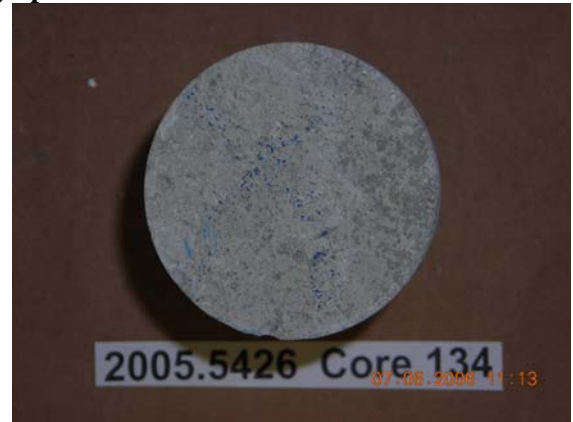


core 134-1.JPG

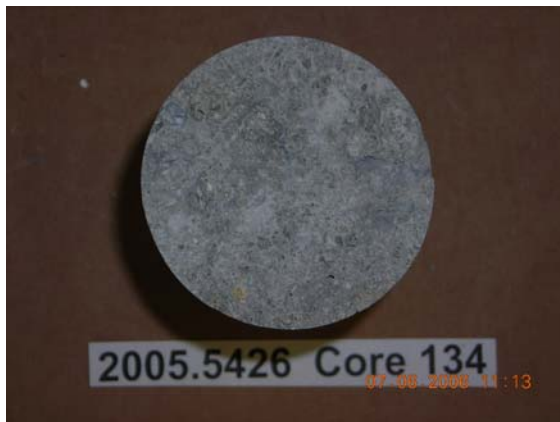
High Bent Core Photographs - Set D.2E



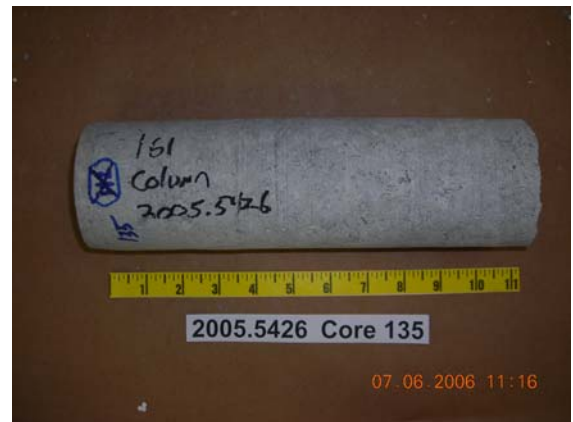
core 134-2.JPG



core 134-3.JPG



core 134-4.JPG



core 135-1.JPG



core 135-2.JPG



core 135-3.JPG

High Bent Core Photographs - Set D.2E



core 135-4.JPG



core 136-1.JPG



core 136-2.JPG



core 136-3.JPG



core 136-4.JPG



core 136-5.JPG

High Bent Core Photographs - Set D.2E



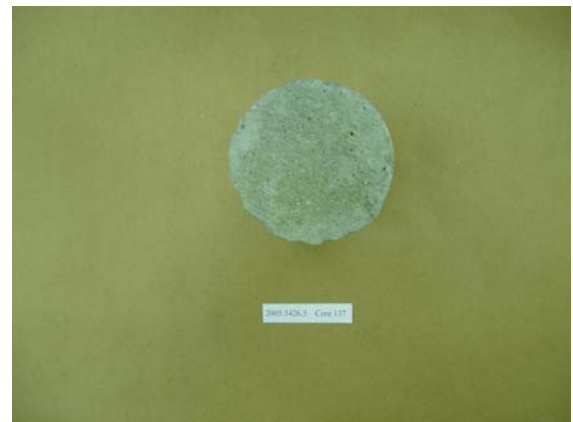
core 136-6.JPG



core 137-1.JPG



core 137-2.JPG



core 137-3.JPG

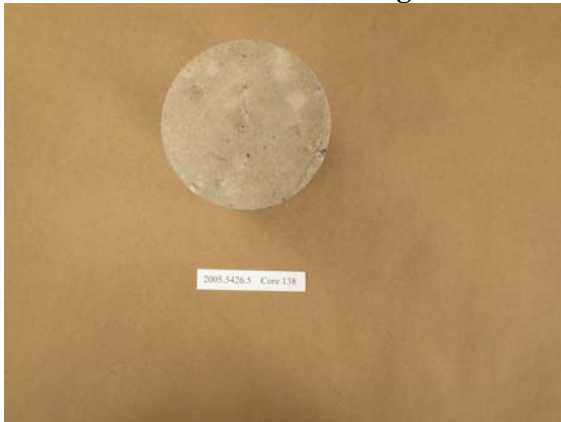


core 137-4.JPG



core 138-1.jpg

High Bent Core Photographs - Set D.2E



core 138-2.jpg



core 138-3.JPG



core 138-4.JPG



core 138-5.JPG



core 139-1.JPG

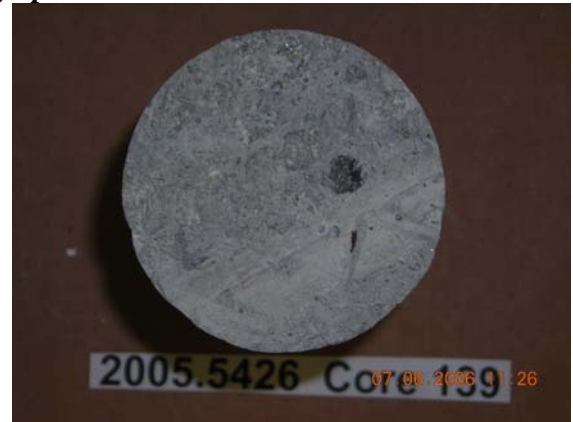


core 139-2.JPG

High Bent Core Photographs - Set D.2E



core 139-3.JPG



core 139-4.JPG



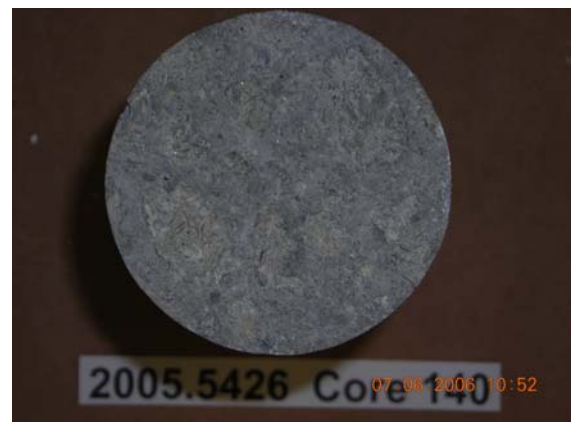
core 140-1.JPG



core 140-2.JPG



core 140-3.JPG



core 140-4.JPG

High Bent Core Photographs - Set D.2E



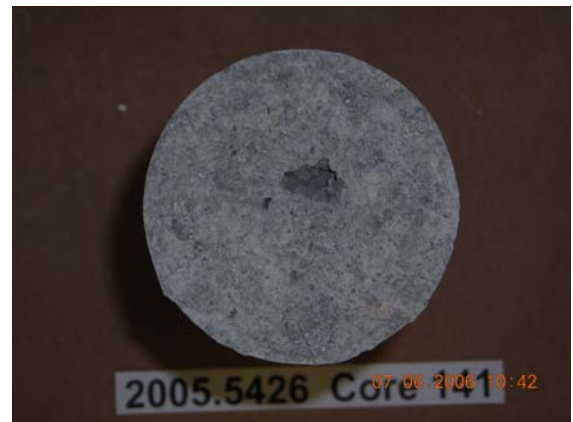
core 141-1.JPG



core 141-2.JPG



core 141-3.JPG



core 141-4.JPG



core 142-1.JPG



core 142-2.JPG

High Bent Core Photographs - Set D.2E



core 142-3.JPG



core 142-4.JPG



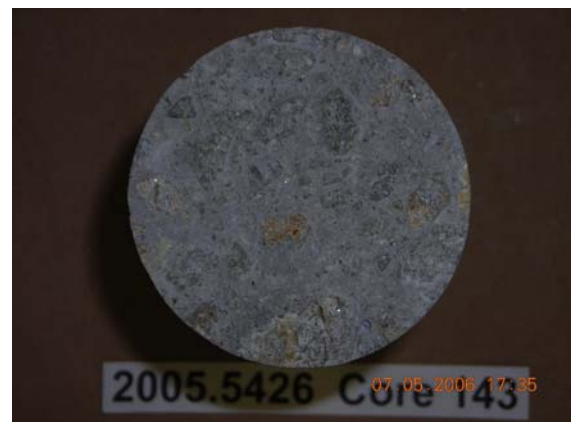
core 143-1.JPG



core 143-2.JPG



core 143-3.JPG



core 143-4.JPG

High Bent Core Photographs - Set D.2E



core 144-1.JPG



core 144-2.JPG



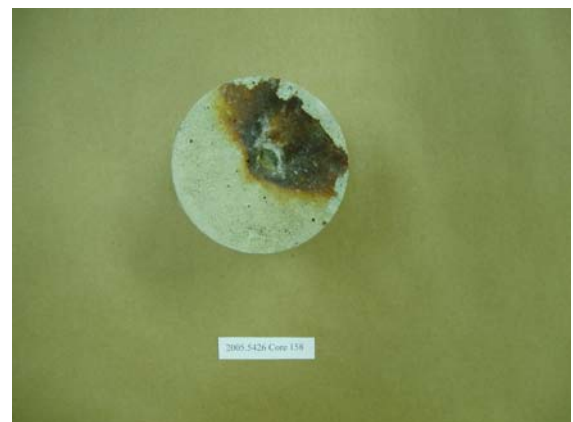
core 144-3.JPG



core 144-4.JPG



core 158-1.JPG



core 158-2.JPG

High Bent Core Photographs - Set D.2E



core 158-3.JPG



core 159-1.JPG



core 159-2.JPG



core 159-3.JPG



core 159-4.JPG



core 159-5.JPG