

APPENDIX D.2D: PHOTOGRAPHS - APPROACH BENT SPANS

Approach Bent Span Photographs - Set D.2D



Bent 5, Girder #1: SP & ES south face



Span 32; east elevation



Span 35; deck surface



Span 48; deck soffit



Span 48; Showing cracking at end of girder



Span 54, West elevation

Approach Bent Span Photographs - Set D.2D



Span 54; deck soffit



Span 54; deck surface



Span 54; East elevation



Span 54; East elevation



Span 54; West elevation



Span 65; West elevation

Approach Bent Span Photographs - Set D.2D



Span 65; West elevation



Span 65; West elevation



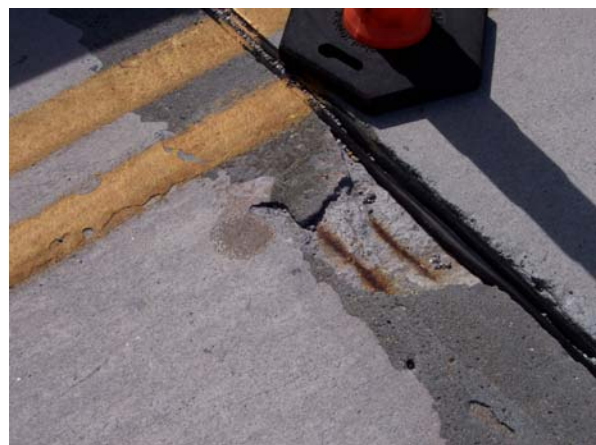
Span 93-94, South deck core



Span 93; East elevation



Span 93; West elevation



Span 102; deck surface

Approach Bent Span Photographs - Set D.2D



Span 102; deck surface



Span 102; deck surface



Span 116-117, Midspan deck core



Span 116; deck surface



Span 116; deck surface; bad raveled edge



Span 116; East elevation

Approach Bent Span Photographs - Set D.2D



Span 117; deck surface



Span 117; deck surface



Span 117; East elevation



Span 175-176, Girder #3 core



Span 176, deck soffit; south



Span 176;

Approach Bent Span Photographs - Set D.2D



Span 176; deck soffit



Span 176; deck soffit; north



Span 176; deck soffit; south



Span 176; deck soffit; south



Span 176; deck soffit; south



Span 176; East elevation

Approach Bent Span Photographs - Set D.2D



Span 176; East elevation; close up of BRNG



Span 176; Girder



Span 176; West elevation