

See Sheet 1-A For Index of Sheets  
See Sheet 1-B For Symbolology

T.I.P. NO.	SHEET NO.
B-4054	UC-1

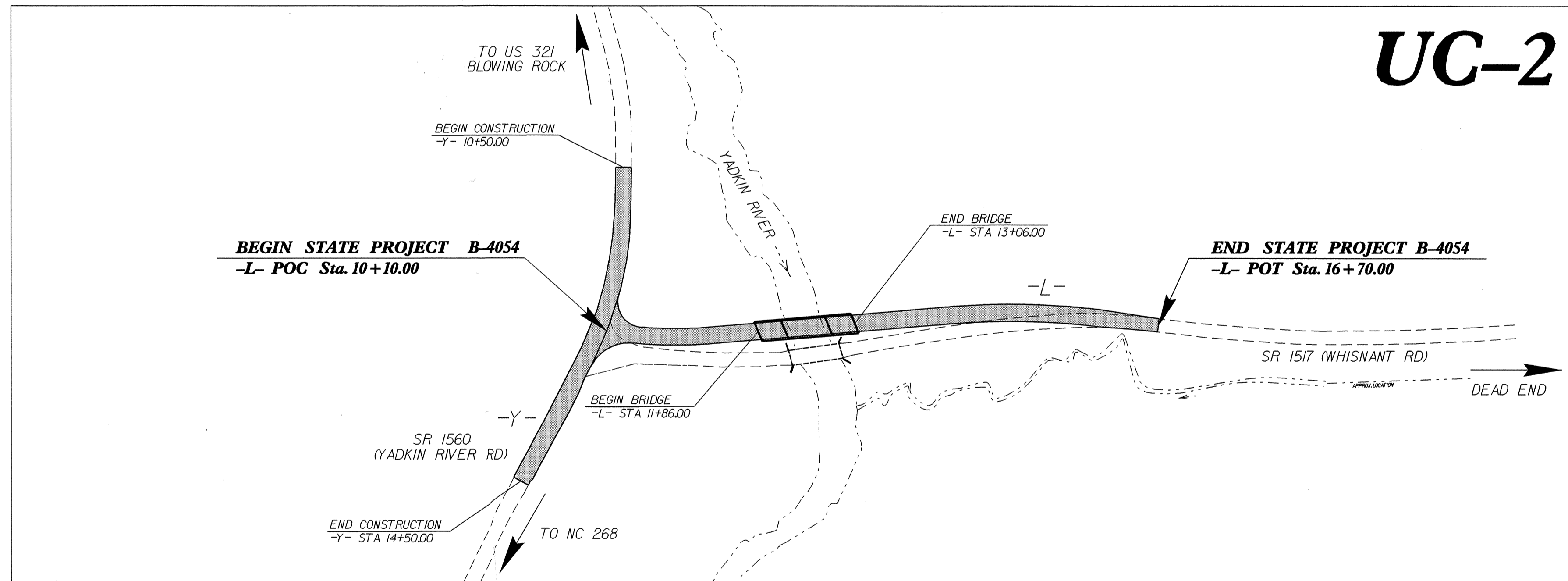
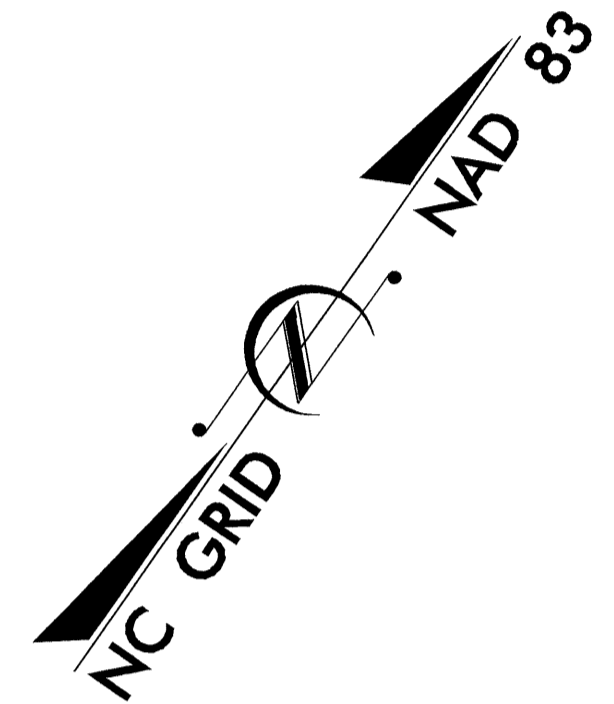
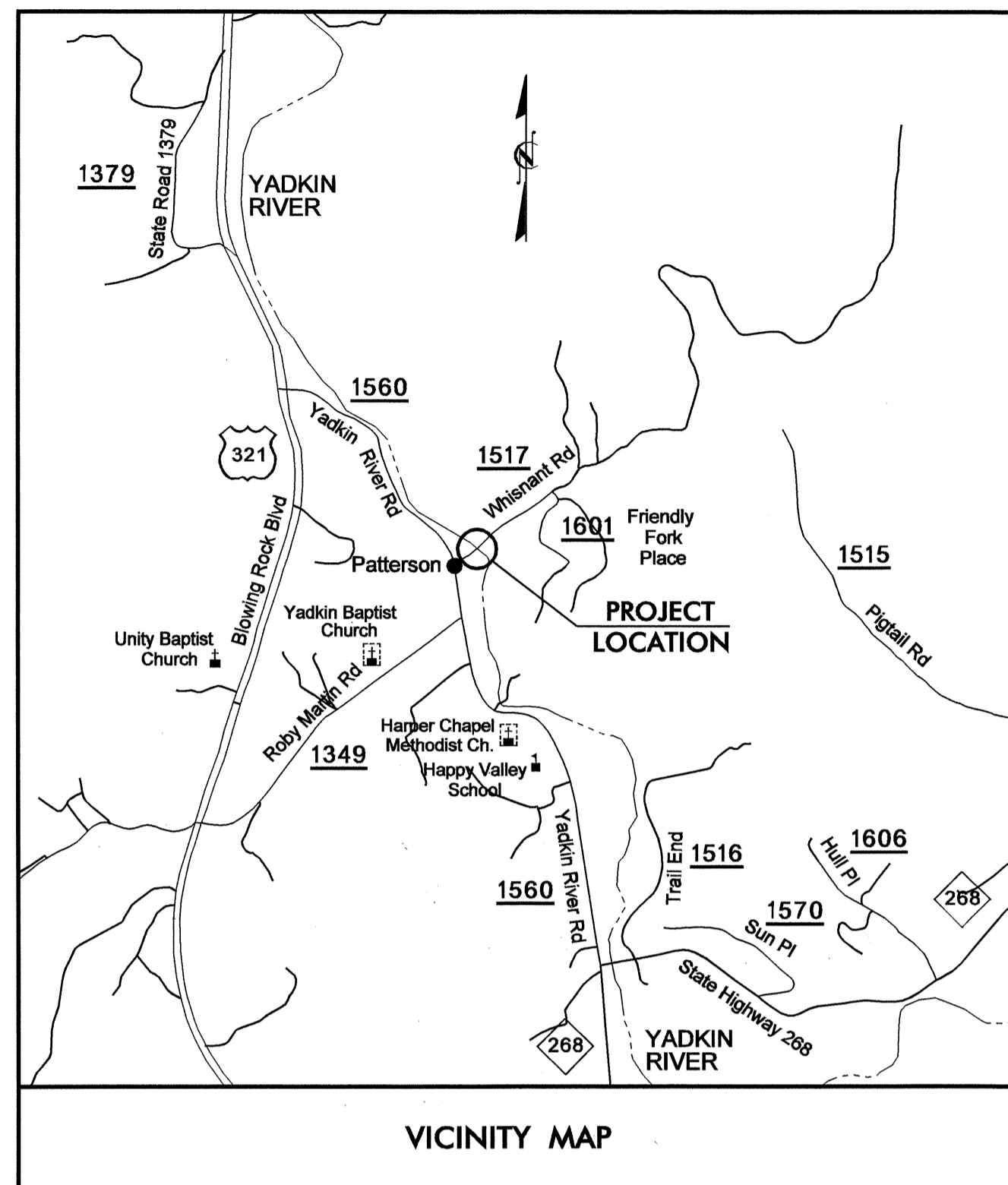
STATE OF NORTH CAROLINA  
DIVISION OF HIGHWAYS

**UTILITY CONSTRUCTION PLANS  
CALDWELL COUNTY**

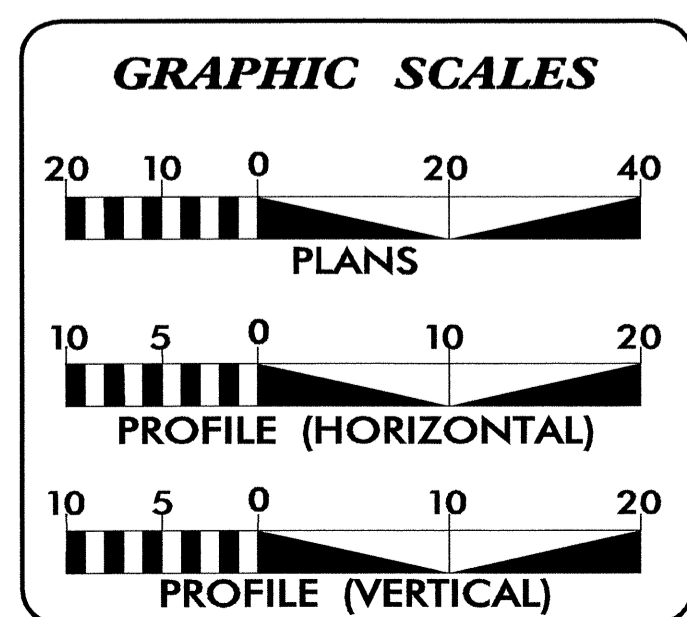
**LOCATION: BRIDGE NO. 344 OVER YADKIN RIVER  
ON SR 1517 (WHISNANT ROAD)**

**TYPE OF WORK: UTILITY RELOCATION**

**TIP PROJECT: B-4054**



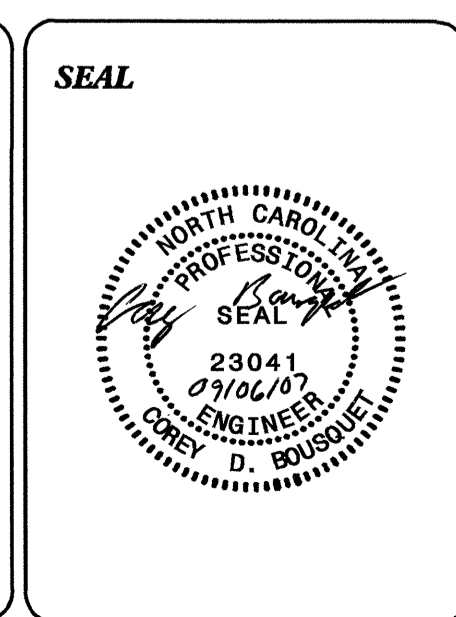
**UC-2**



INDEX OF SHEETS	
SHEET NO.	DESCRIPTION
UC-1	TITLE SHEET
UC-2	UTILITY CONSTRUCTION PLAN SHEETS
UC-3	PROFILE SHEET

**WATER AND SEWER OWNERS ON PROJECT**

(1) OMNI SUPPLY INC.



PREPARED IN THE OFFICE OF:  
**DIVISION OF HIGHWAYS  
PROJECT SERVICES  
UTILITY SECTION**

1591 MAIL SERVICES CENTER  
RALEIGH NC 27699-1591  
PHONE (919) 259-4128  
FAX (919) 250-4119

**Roger Worthington, P.E.** UTILITIES SECTION ENGINEER  
**Corey Bousquet, P.E.** UTILITIES SQUAD LEADER PROJECT ENGINEER  
**Stephanie Athey** UTILITIES PROJECT DESIGNER



5/14/99

06-SEP-2007 14:09 C:\projects\proj\ba4054-ut-upr.dgn

1340  
1330  
1320  
1310  
1300  
1290  
1280  
1270  
1260  
1250  
1240  
1230  
1220  
1210  
1200  
1190  
1180  
1170  
1160  
1150  
1140

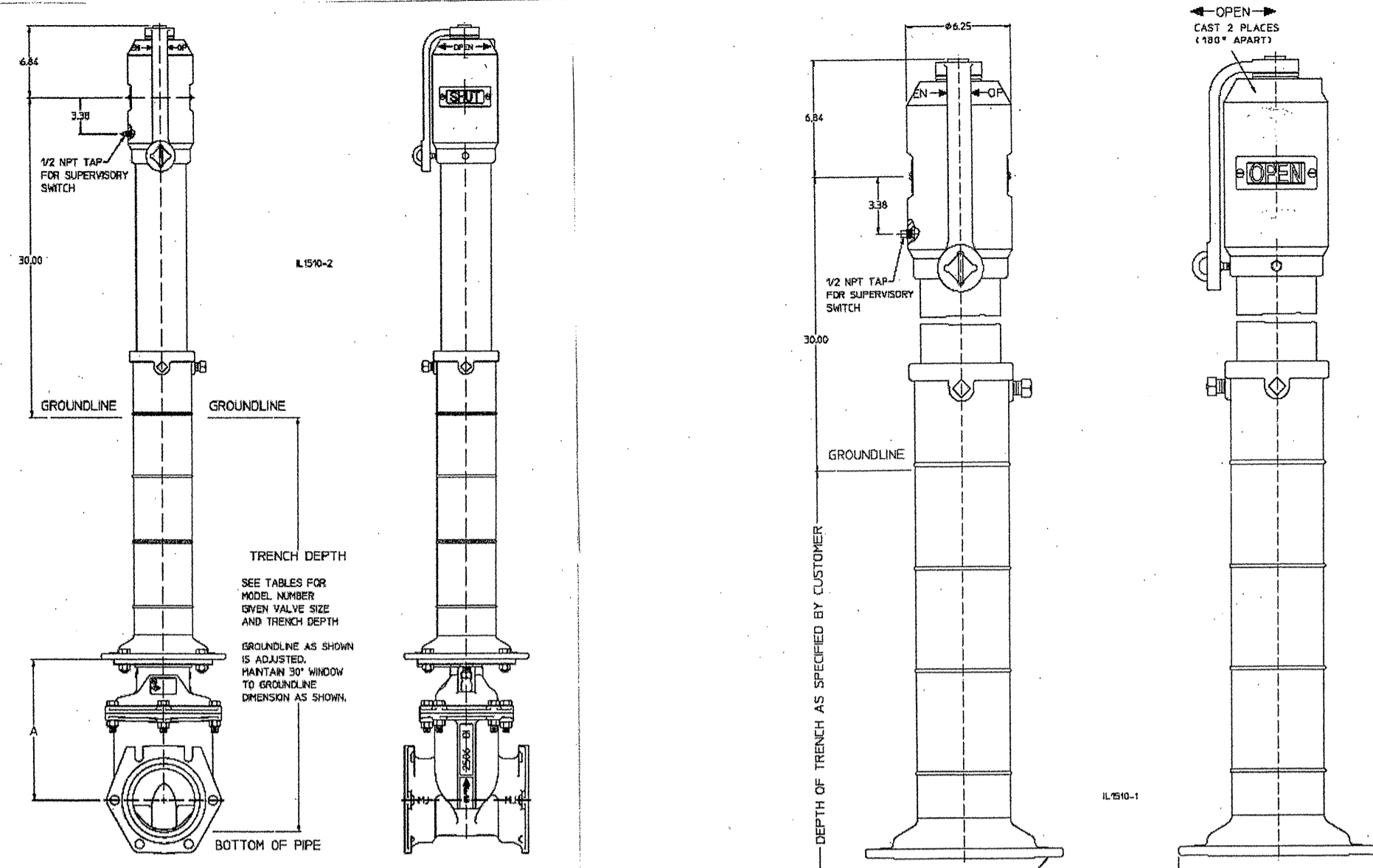
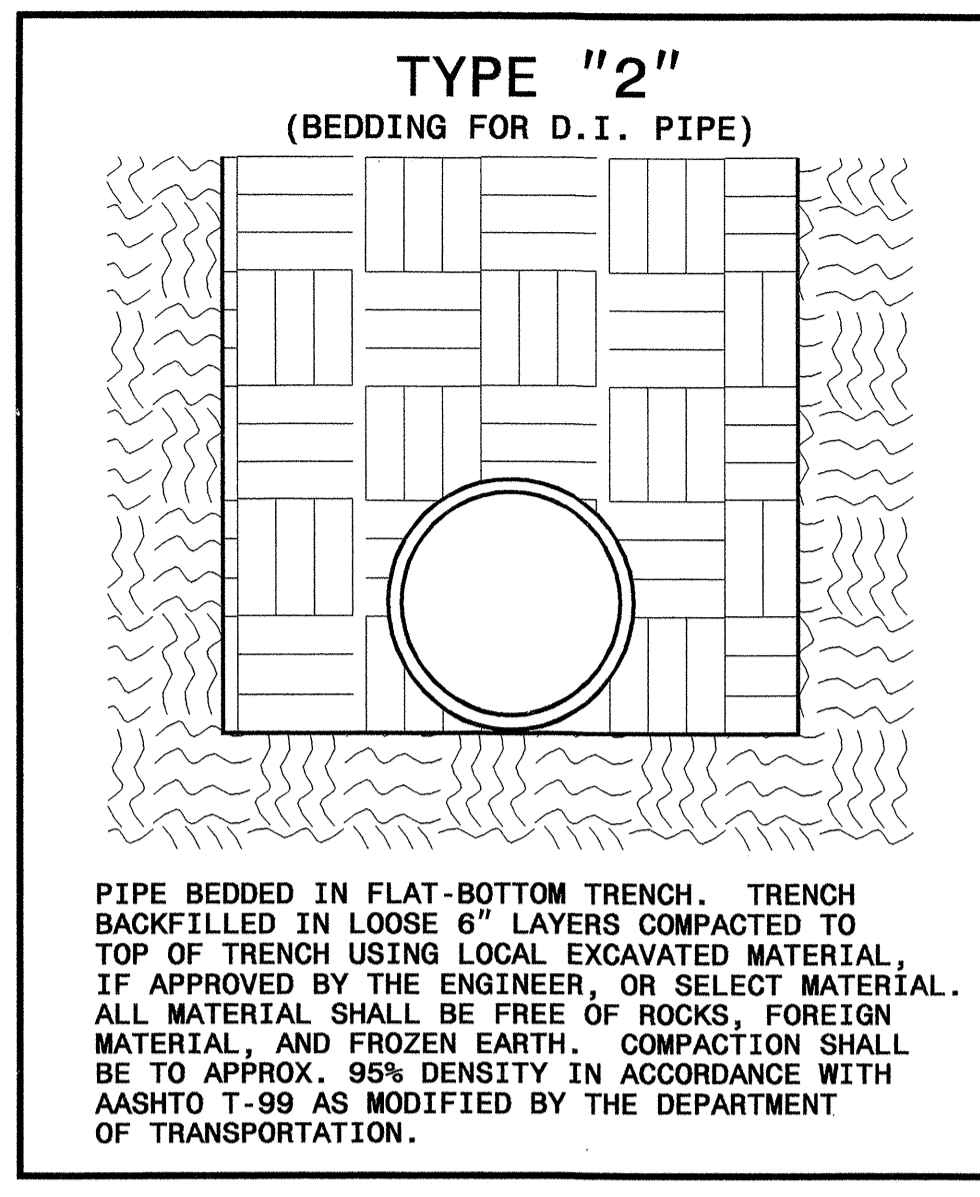
PROP. MANHOLE B STA. 2+03  
LINE-1, 4' DIA. PRECAST  
MANHOLE

INVERT IN 1248.60  
INVERT OUT 1248.40

203' - 12" DI Sanitary Gravity Sewer  
Sewer Grade 4.27%

INVERT IN 1239.74  
INVERT OUT 1239.54

PROP. MANHOLE A STA. 0+00  
LINE-1, 4' DIA. PRECAST  
MANHOLE



MAXIMUM TRENCH WIDTH AT TOP OF PIPE			
NOMINAL PIPE SIZE (INCHES)	TRENCH WIDTH (INCHES)	NOMINAL PIPE SIZE (INCHES)	TRENCH WIDTH (INCHES)
4	28	20	44
6	30	24	48
8	32	30	54
10	34	36	60
12	36	42	66
14	38	48	72
16	40	54	78
18	42		

# SEWER LINE 1

0

1+00

2+00

**UTILITY CONSTRUCTION**

PROJECT REFERENCE NO. <b>B-4054</b>	SHEET NO. <b>UC-3</b>
DESIGNED BY: <b>CDB</b>	
DRAWN BY: <b>CDB</b>	
CHECKED BY: <b>CDB</b>	
APPROVED BY: <b>CDB</b>	
REVISED:	
NORTH CAROLINA DEPARTMENT OF TRANSPORTATION PROJECT SERVICES UNIT PHONE: (919) 250-4128 FAX: (919) 250-4119	
UTILITY CONSTRUCTION PLANS ONLY	

1310  
1300  
1290  
1280  
1270  
1260  
1250  
1240  
1230  
1220  
1210  
1200  
1190  
1180  
1170  
1160  
1150  
1140

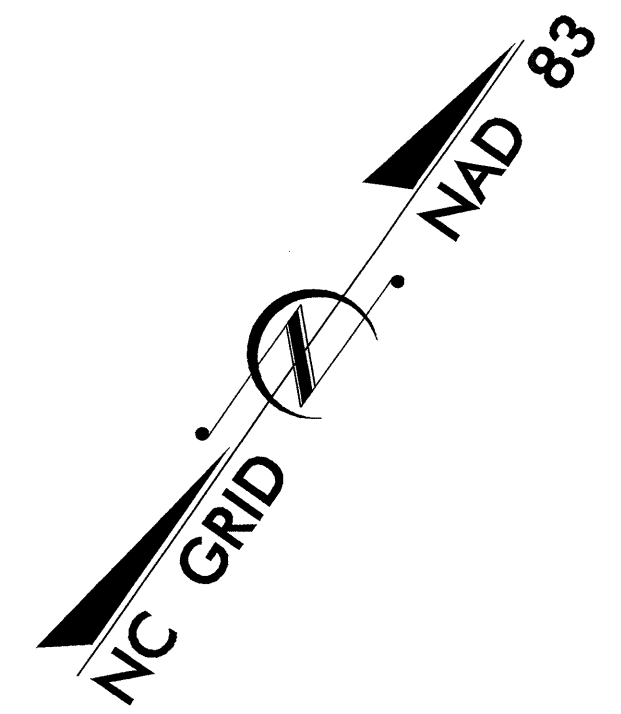
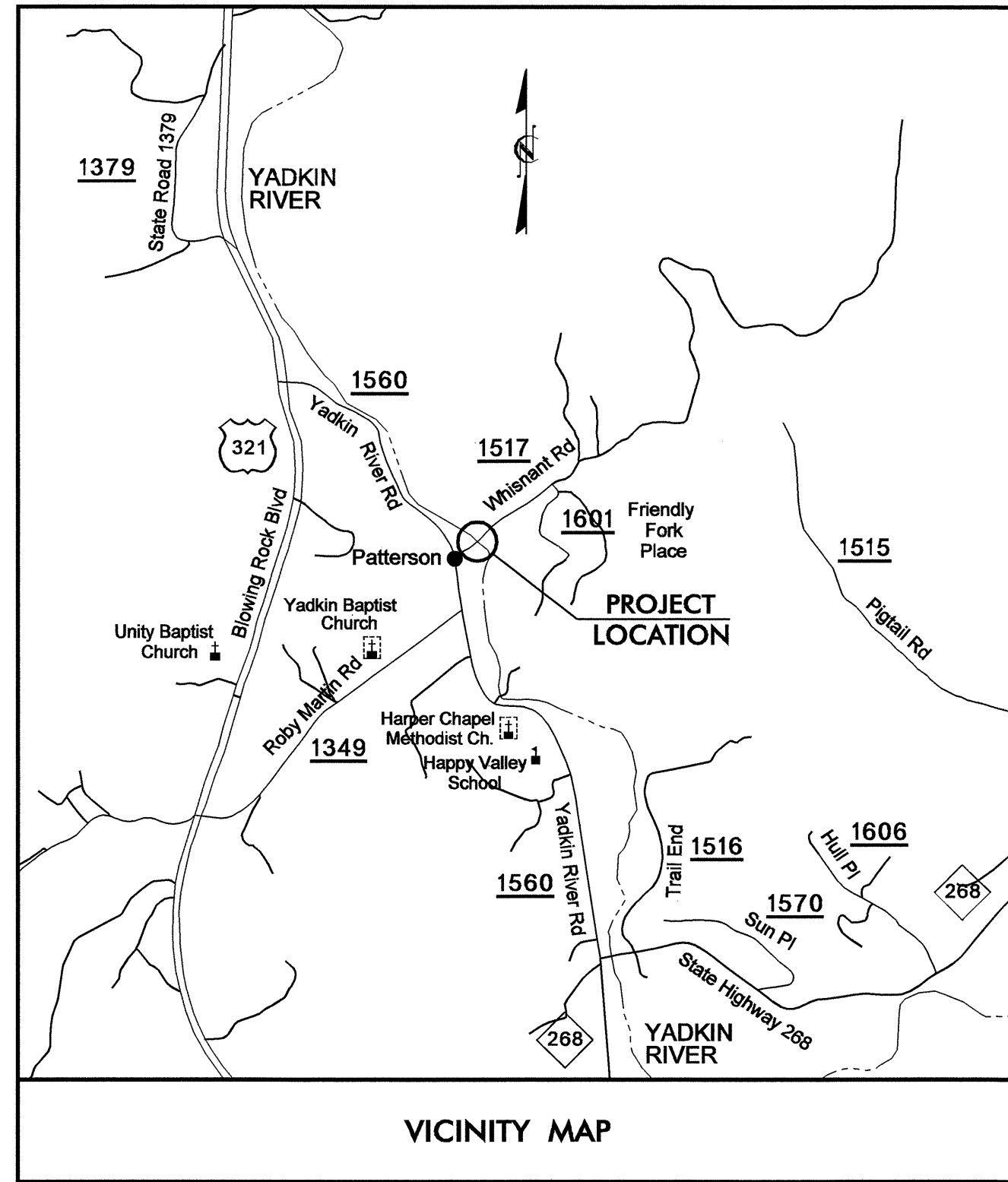
T.I.P. NO.	SHEET NO.
B-4054	UO-1

STATE OF NORTH CAROLINA  
DIVISION OF HIGHWAYS

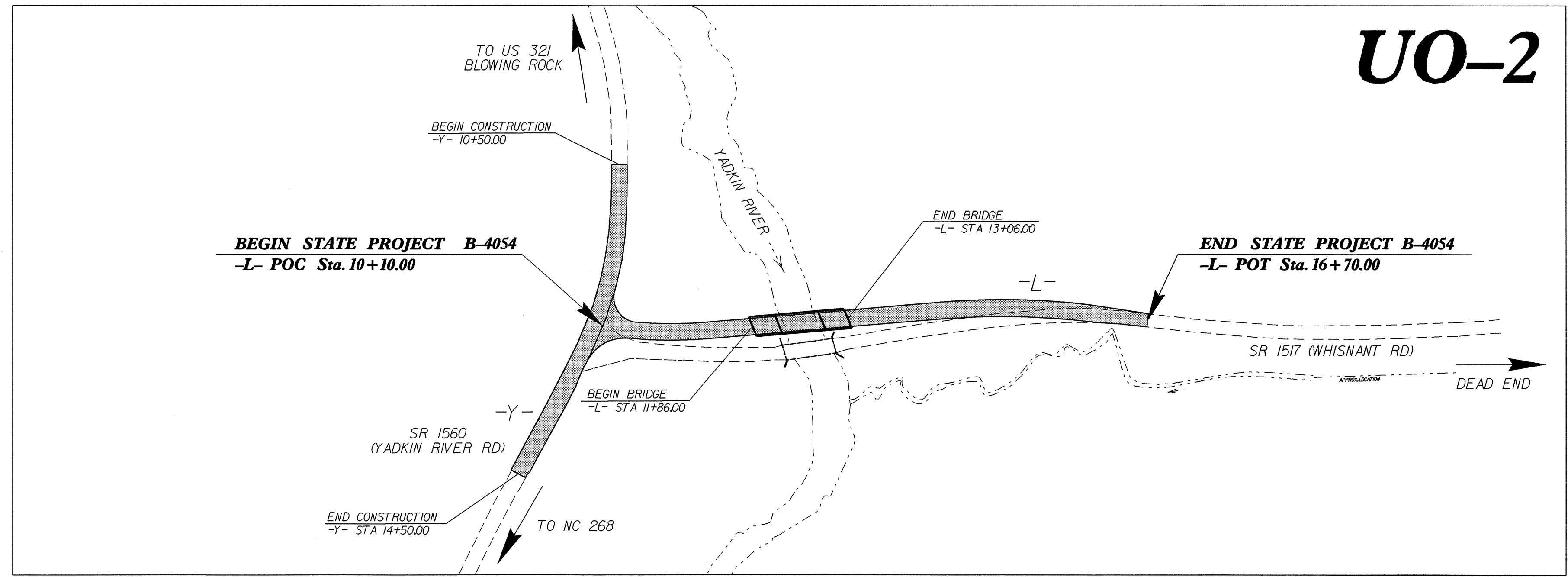
**UTILITY BY OTHERS PLANS  
CALDWELL COUNTY**

**LOCATION: BRIDGE NO. 334 OVER YADKIN RIVER ON SR 1517**

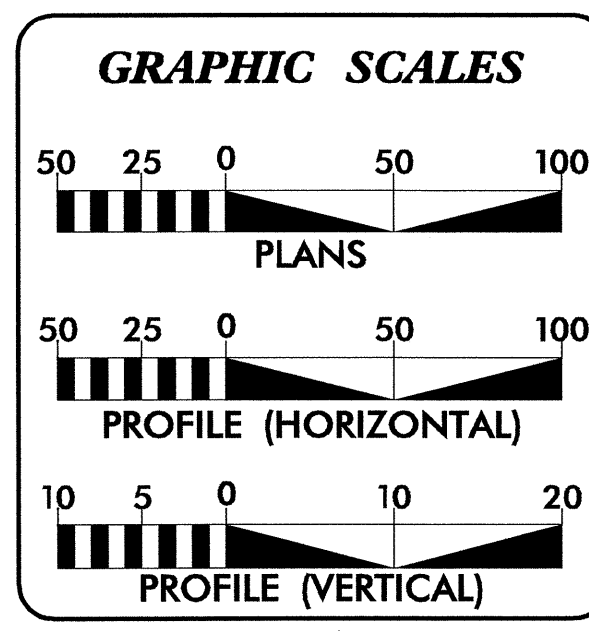
**TYPE OF WORK: UTILITY RELOCATION**



**TIP PROJECT: B-4054**



**UO-2**



SHEET NO.	DESCRIPTION
UO-1	TITLE SHEET
UO-2	UTILITY BY OTHERS PLAN SHEETS

UTILITY OWNERS ON PROJECT
(1) BLUE RIDGE EMC (POWER)
(2) AT&T (TELEPHONE)
(3) CHARTER (CABLE)

PREPARED IN THE OFFICE OF:  
**DIVISION OF HIGHWAYS  
DESIGN SERVICES  
UTILITY SECTION**

1591 MAIL SERVICES CENTER  
RALEIGH NC 27699-1591  
PHONE (919) 250-4128  
FAX (919) 250-4119

<b>Roger Worthington, P.E.</b>	UTILITIES SECTION ENGINEER
<b>Corey Bousquet, P.E.</b>	UTILITIES SQUAD LEADER PROJECT ENGINEER
<b>Stephanie Athey</b>	UTILITIES PROJECT DESIGNER

**UTILITIES BY OTHERS**

**NOTE:**  
ALL PROPOSED UTILITY WORK SHOWN ON THIS SHEET WILL BE DONE BY OTHERS



Sta 10+68.00  
= 15' 57' 44.3" (LT)  
= 1' 48' 48.8"  
= 135.12'  
= 68.00'  
= 485.00'  
= SEE PLANS  
= STOP CONDITION

PI Sta 15+07.45  
Δ = 11' 25' 34.7" (RT)  
D = 6' 13' 40.1"  
L = 183.47'  
R = 920.00'  
SE = 0.04  
V = 30 MPH

PI Sta 18+33.93  
Δ = 8' 36' 35.1" (LT)  
D = 3' 50' 24.7"  
L = 224.20'  
T = 112.31'  
R = 1,492.00'  
SE = EXIST.

-Y- POT Sta.10+00.00  
BEGIN CONSTRUCTION  
-Y- STA.10+50.00

Sta 11+90.23  
= 27' 21' 10.7" (RT)  
= 13' 38' 19.4"  
= 200.55'  
= 102.23'  
= 420.10'  
= EXIST.

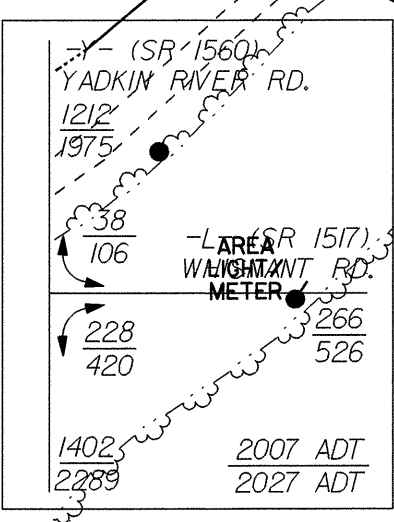
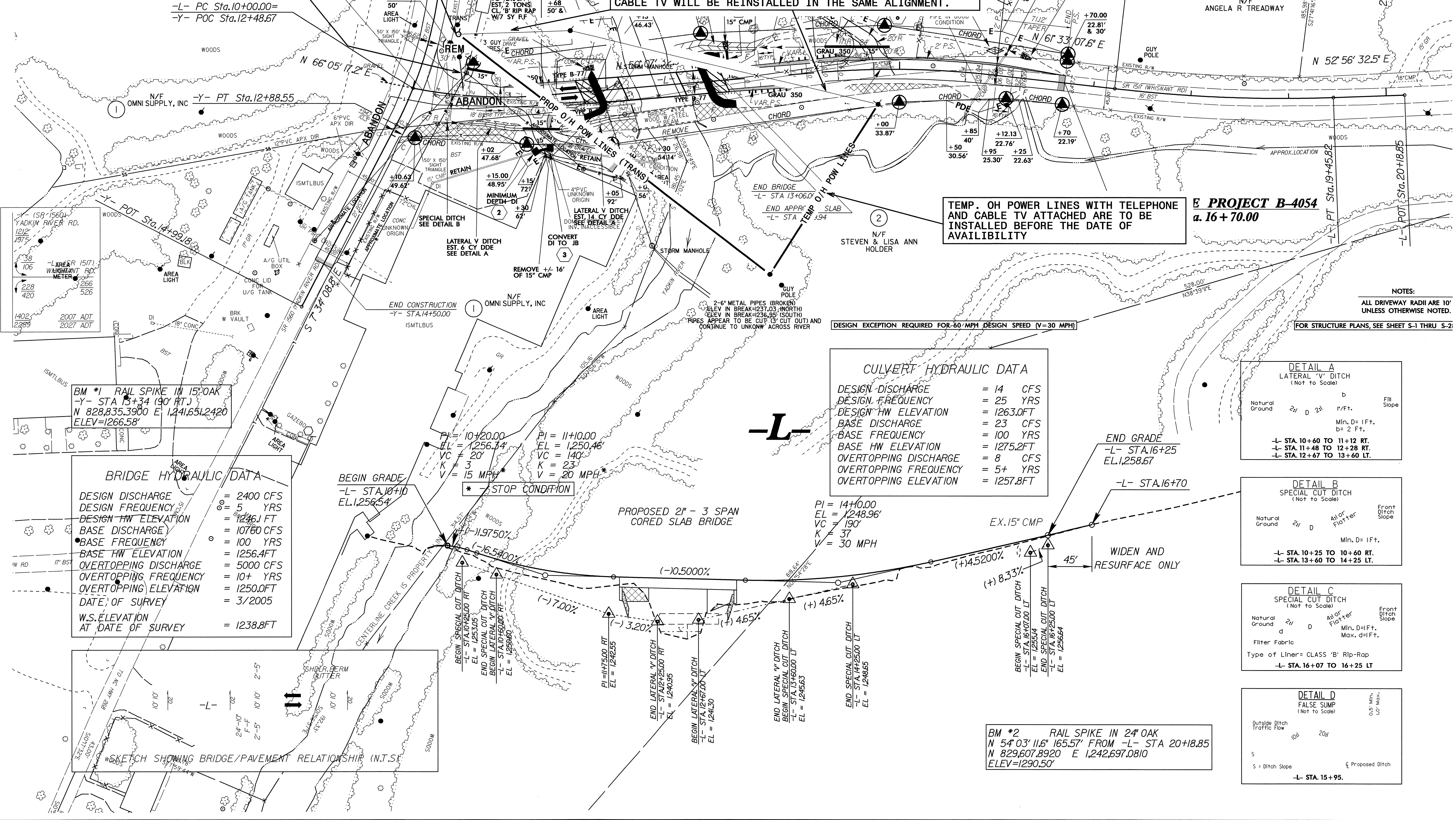
**BEGIN**  
**-L- POC Sta. 10 + 10.00**

**THE EXISTING TRANSMISSION POLE WILL BE RELOCATED AFTER THE BRIDGE IS COMPLETED. BLUE RIDGE EMC WILL NEED ONE MONTH NOTICE TO START WORK AND TWO WEEKS TO COMPLETE THE WORK.**

**THE OH POWER LINES WITH TELEPHONE AND CABLE TV ATTACHED WILL BE REMOVED DURING THE CONSTRUCTION OF THE BRIDGE, AFTER THE CONSTRUCTION OF THE BRIDGE IS COMPLETED THE OH POWER LINES, TELEPHONE AND CABLE TV WILL BE REINSTALLED IN THE SAME ALIGNMENT.**

**TEMP. OH POWER LINES WITH TELEPHONE AND CABLE TV ATTACHED ARE TO BE INSTALLED BEFORE THE DATE OF AVAILABILITY**

**E PROJECT B-4054  
a. 16 + 70.00**



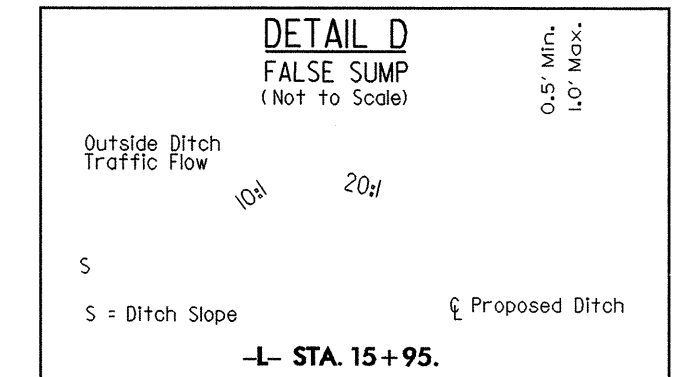
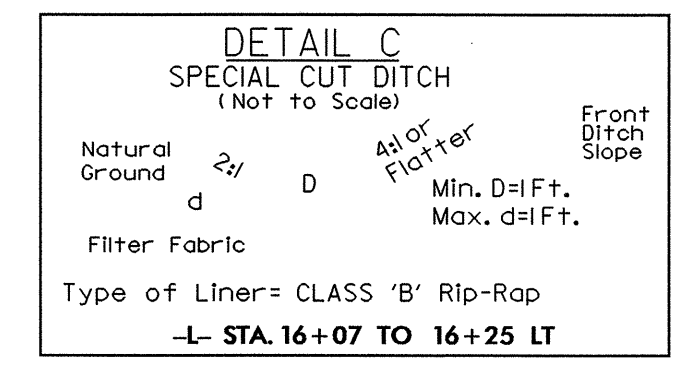
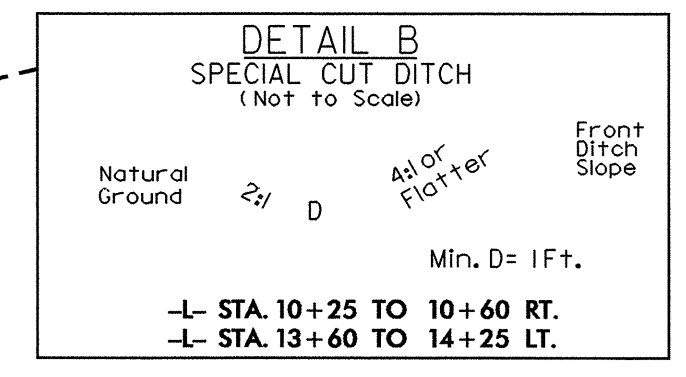
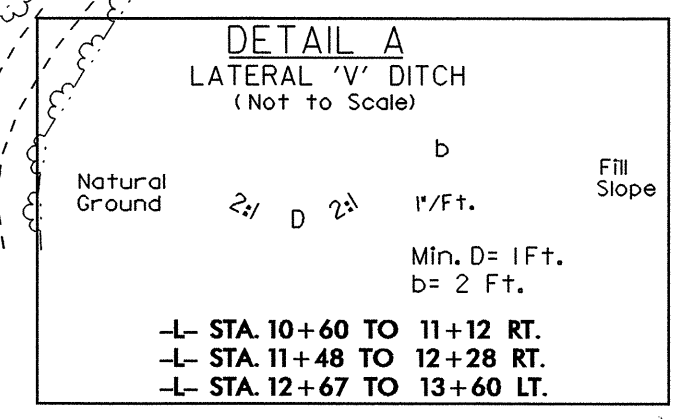
BM #1 RAIL SPIKE IN 15" OAK  
-Y- STA 13+34 (90' RT.)  
N 828,835.3900 E 1,241,651.2420  
ELEV=1266.58'

**BRIDGE HYDRAULIC DATA**

DESIGN DISCHARGE	= 2400 CFS
DESIGN FREQUENCY	= 5 YRS
DESIGN HW ELEVATION	= 1246.1 FT
BASE DISCHARGE	= 10760 CFS
BASE FREQUENCY	= 100 YRS
BASE HW ELEVATION	= 1256.4 FT
OVERTOPPING DISCHARGE	= 5000 CFS
OVERTOPPING FREQUENCY	= 10+ YRS
OVERTOPPING ELEVATION	= 1250.0 FT
DATE OF SURVEY	= 3/2005
W.S. ELEVATION AT DATE OF SURVEY	= 1238.8 FT

**CULVERT HYDRAULIC DATA**

DESIGN DISCHARGE	= 14 CFS
DESIGN FREQUENCY	= 25 YRS
DESIGN HW ELEVATION	= 1263.0 FT
BASE DISCHARGE	= 23 CFS
BASE FREQUENCY	= 100 YRS
BASE HW ELEVATION	= 1275.2 FT
OVERTOPPING DISCHARGE	= 8 CFS
OVERTOPPING FREQUENCY	= 5+ YRS
OVERTOPPING ELEVATION	= 1257.8 FT



BM #2 RAIL SPIKE IN 2" OAK  
N 54' 03' 11.6" 165.57' FROM -L- STA 20+18.85  
N 829,607.8920 E 1,242,697.0810  
ELEV=1290.50'

REVISIONS  
7/2007 RMP CORRECTED TWO STATION/OFFSET LABELS AS FOLLOWS: EASEMENT OFFSET @ -L- STA. 02+30 REWIDEN TO 54M R/L. EASEMENT LINE REWIDEN SLIGHTLY AND R/W OFFSET @ -L- STA. 04+00 REWIDEN TO 50' L.T. (TYP) ONLY.

06-SEP-2007 16:33  
Utilities\Projects\U0-2\B-4054-ut\_02-pshdgn