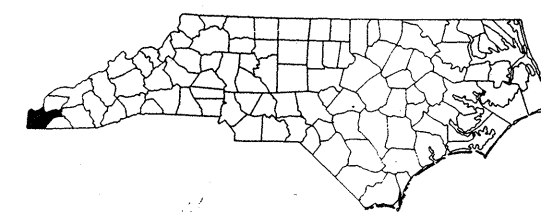
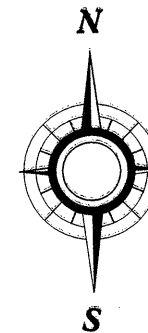
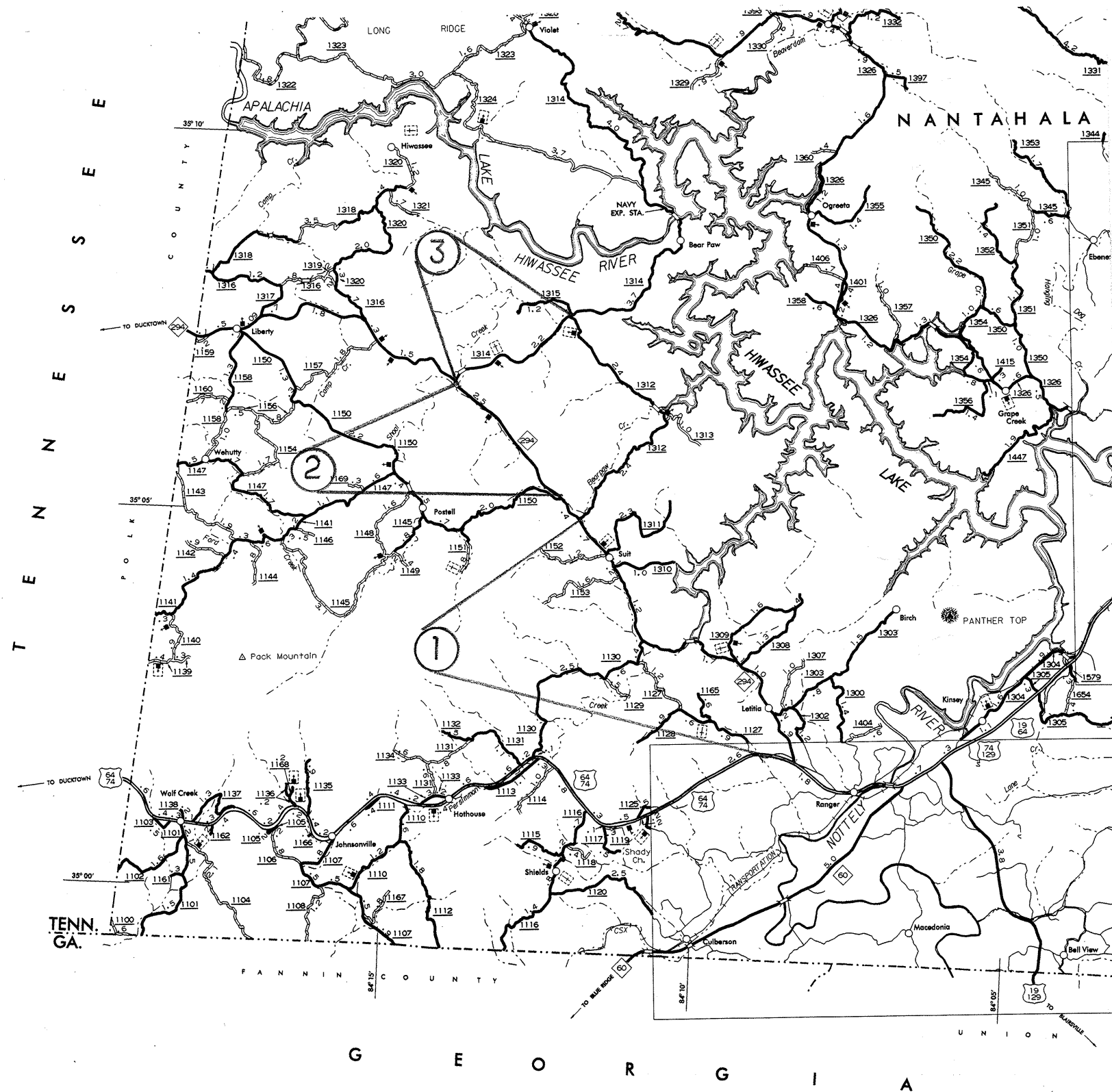


CHEROKEE COUNTY

NORTH CAROLINA

PROJECT REFERENCE NO.		SHEET NO.	
14CR.10201.3		1 of 6	
STATE PROJECT	F.A.PROJECT NO.	DESCRIPTION	
14CR.10201.3			
14CR.20201.4			
14CR.20221.4			

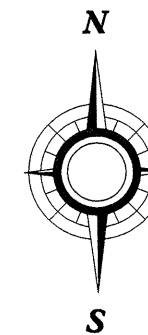
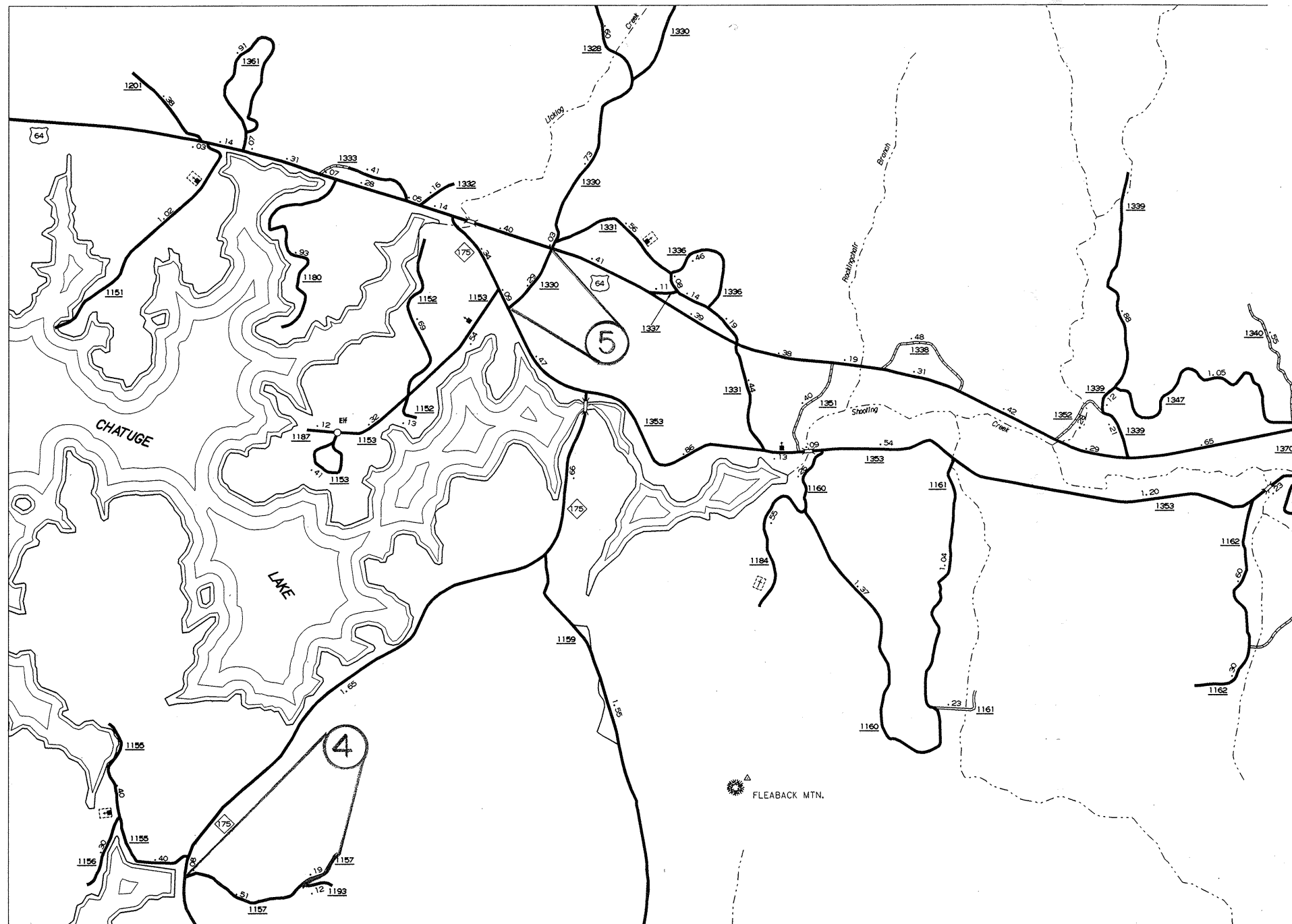
020 1940



CLAY COUNTY

NORTH CAROLINA

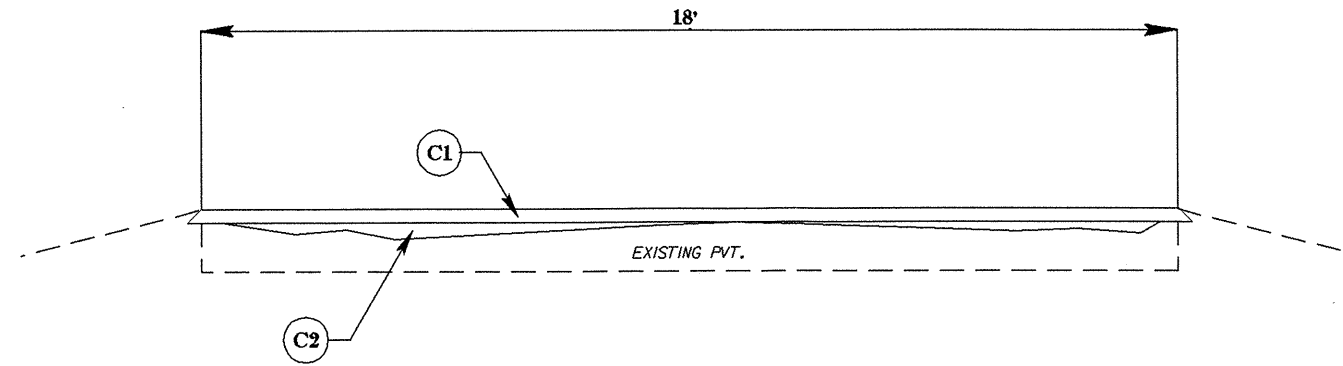
PROJECT REFERENCE NO.		SHEET NO.	
14CR.10201.3		2 of 6	
STATE PROJECT	F.A.PROJECT NO.	DESCRIPTION	
14CR.10201.3			
14CR.20201.4			
14CR.20221.4			



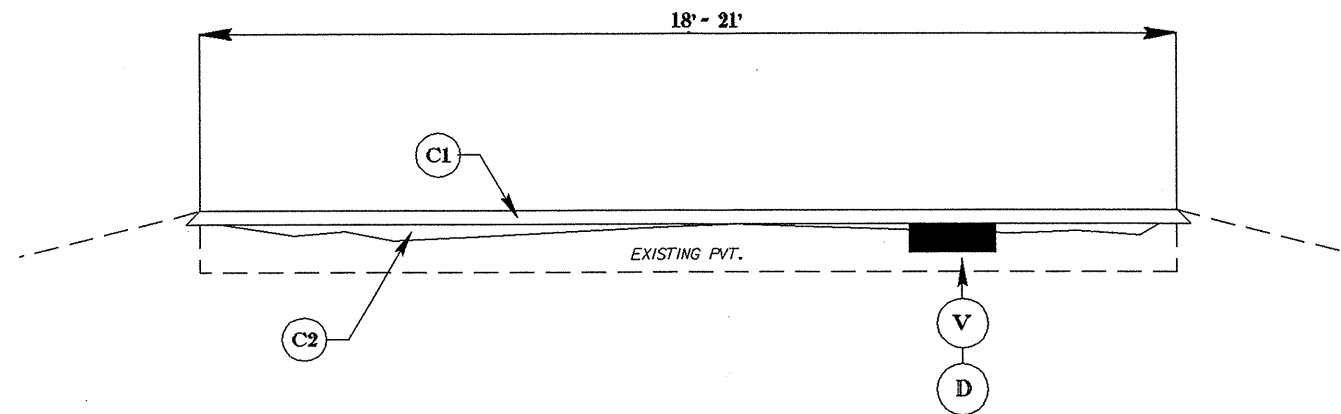
261050

PROJECT REFERENCE NO.		SHEET NO.
14CR.10201.3		3 of 6
STATE PROJECT	F.A. PROJECT NO.	DESCRIPTION
14CR.10201.3		
14CR.20201.4		
14CR.20221.4		

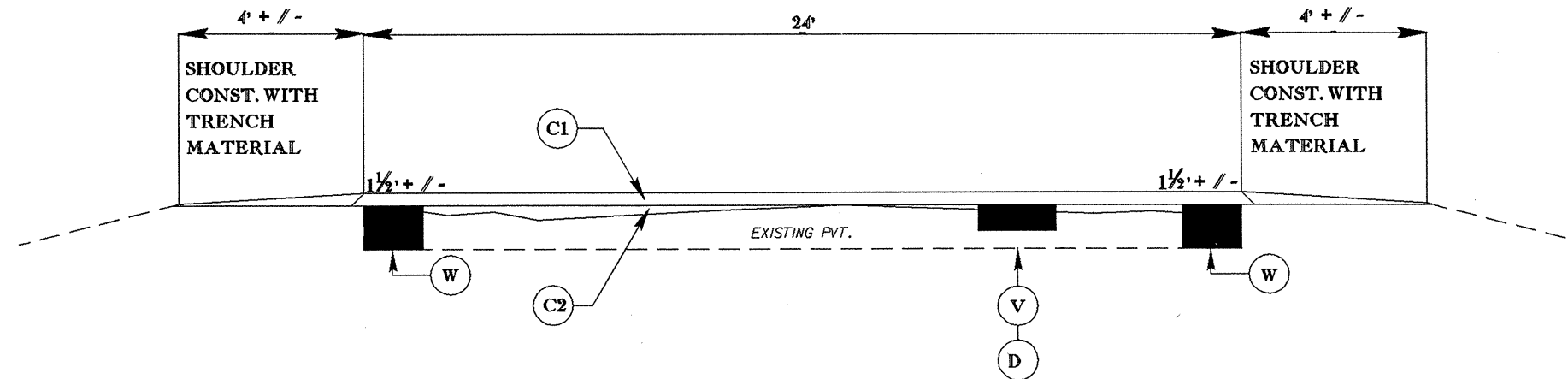
TYPICAL 1



TYPICAL 2



TYPICAL 3



050197

PROJECT REFERENCE NO.		SHEET NO.
14CR.10201.3		4 of 6
STATE PROJECT	F.A. PROJECT NO.	DESCRIPTION
14CR.10201.3		
14CR.20201.4		
14CR.20221.4		

SURFACING SCHEDULE

ITEM NO	DESCRIPTION
C1	ASPHALT CONCRETE SURFACE COURSE, TYPE S9.5B, AT AN AVERAGE RATE OF 168 LBS. PER SQ. YD. (1 1/2")
C2	PROPOSED VARIABLE DEPTH ASPHALT CONCRETE SURFACE COURSE, TYPE SF9.5A, AT AN AVERAGE RATE OF 112 LBS. PER SQ. YD. (LEVELING COURSE)
D	ASPHALT CONCRETE INTERMEDIATE COURSE, TYPE I19.0B, AT AN AVERAGE RATE OF 342 LBS. PER SQ. YD.(3")
V	MILLING ASPHALT PAVEMENT 3" IN DEPTH & 4 ft. OR GREATER IN WIDTH IN DISTRESSED AREAS AS DIRECTED BY THE PROJECT ENGINEER.
W	ASPHALT CONCRETE BASE CSE., TYPE B25.0B, AT AN AVERAGE RATE OF 912 LBS. PER SQ. YD. (8"). (WIDENING - SEE SPECIAL PROVISIONS)

PROJECT NO.	SHEET NO.	TOTAL NO.
14CR.10201.3, 14CR.20201.4 14CR.20221.4	5	6

SUMMARY OF QUANTITIES

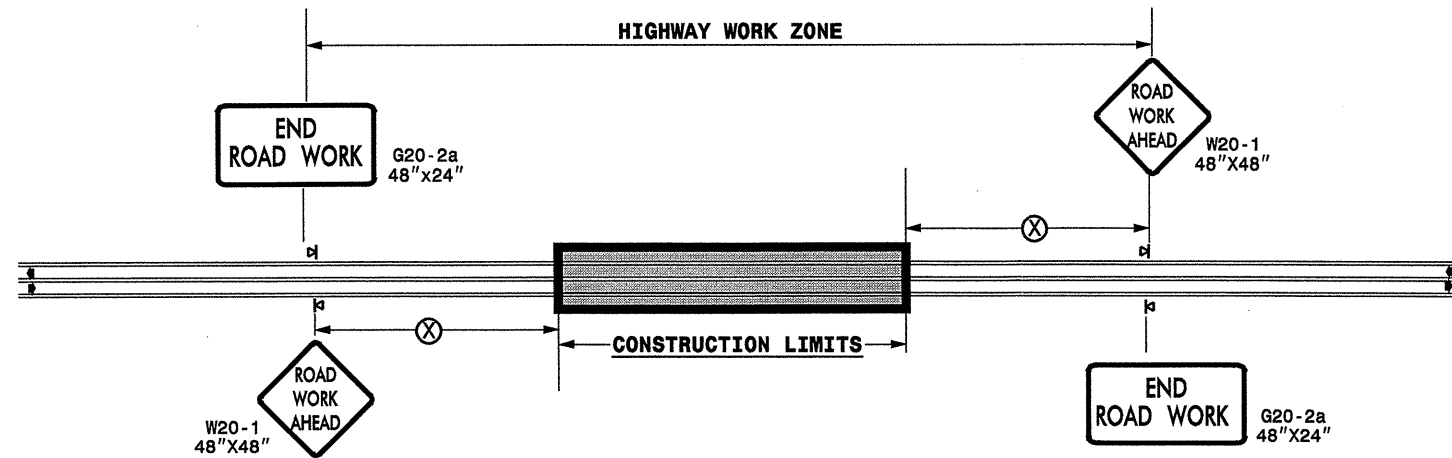
PROJECT NO	COUNTY	MAP NO	ROUTE	DESCRIPTION	TYP NO	LENGTH MI	WIDTH FT	INCIDENTAL STONE BASE TONS	3" MILLING SY	BASE COURSE, B25.0B (Widening) TONS	INTERMEDIATE COURSE, I19.0B TONS	SURFACE COURSE, S9.5B TONS	SF9.5A LEVELING TON	PG 64-22 PLANT MIX TONS
14CR.10201.3	Cherokee	1	NC294	FROM US64 TO PVMT CHNG 194' EAST OF SR1312	3	4.1	24	100	1,173	3,488	201	5,140	3,427	691
		2	NC294	FROM SR1150 TO PVMT CHNG 0.15 MILE EAST OF SR1314	3	2.34	24	50	587	1,991	100	2,934	1,956	394
TOTAL FOR PROJ NO. 14CR.10201.3						6.44		150	1,760	5,479	301	8,074	5,383	1,085
14CR.20201.4	Cherokee	3	SR1314	FROM NC294 TO SR1312	2	2	21		740		134	2,194	1,463	234
TOTAL FOR PROJ NO. 14CR.20201.4						2		0	740		134	2,194	1,463	234
14CR.20221.4	Clay	4	SR1157	FROM NC175 TO END OF SYSTEM	2	0.8	18		1,531		275	745	497	90
		5	SR1330	FROM NC175 TO US64	1	0.29	18					270	180	28
TOTAL FOR PROJ NO. 14CR.20221.4						1.09		0	1,531		275	1,015	677	118
GRAND TOTAL						9.53		150	4,031	5,479	710	11,283	7,523	1,437

PROJECT NO.	SHEET NO.	TOTAL NO.
14CR.10201.3, 14CR.20201.4 14CR.20221.4	6	6

POLYUREA AND PAINT QUANTITIES

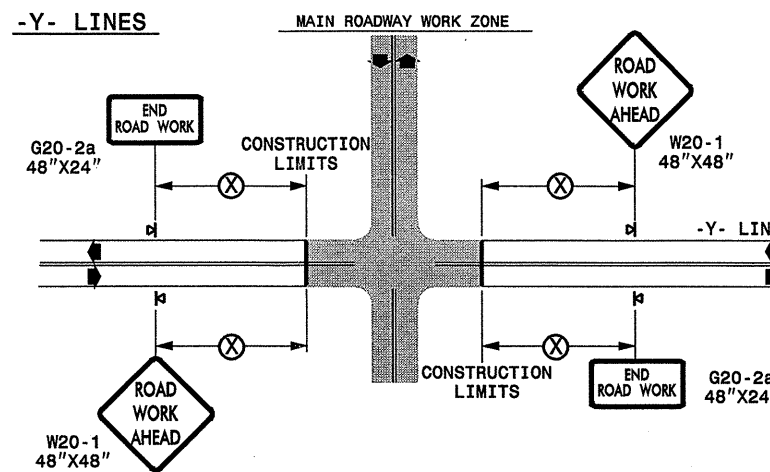
PROJECT NO	COUNTY	MAP NO	ROUTE	DESCRIPTION	481000000-E	483500000-E	484000000-E	484700000-E		4847140000-E	4847200000-N
					4" YELLOW PAINT LF	24" WHITE PAINT LF	PAINT MSG SCHOOL LF	4" WHITE POLYUREA LINES, STANDARD BEADS LF	4" YELLOW POLYUREA LINES, STANDARD BEADS LF	24" WHITE POLYUREA LINES, STANDARD BEADS LF	POLYUREA MSG SCHOOL, STANDARD BEADS EA
14CR.10201.3	Cherokee	1	NC294	FROM US64 TO PVMT CHNG 194' EAST OF SR1312	40,649			43,296	40,649		
		2	NC294	FROM SR1150 TO PVMT CHNG 0.15 MILE EAST OF SR1314	17,959	84	12	24,800	17,959	84	12
TOTAL FOR PROJ NO. 14CR.10201.3					58,608	84	12	68,096	58,608	84	12
					126,704						
14CR.20201.4	Cherokee	3	SR1314	FROM NC294 TO SR1312							
TOTAL FOR PROJ NO. 14CR.20201.4											
14CR.20221.4	Clay	4	SR1157	FROM NC175 TO END OF SYSTEM							
		5	SR1330	FROM NC175 TO US64							
TOTAL FOR PROJ NO. 14CR.20221.4											
GRAND TOTAL					58,608	84	12	68,096	58,608	84	12
					126,704						

TWO-WAY UNDIVIDED ** (L-LINES)



STATE OF NORTH CAROLINA
DEPT. OF TRANSPORTATION
DIVISION OF HIGHWAYS
RALEIGH, N.C.

ROADWAYS INTERSECTING ALONG 2 WAY UNDIVIDED WORK ZONE (Y-LINES)



DETAIL DRAWING
FOR TWO-WAY UNDIVIDED
WORK ZONE WARNING SIGNS


GENERAL NOTES

- USE FLUORESCENT ORANGE SHEETING (TYPE VII OR HIGHER) ON ALL ADVANCED WORK ZONE SIGNS.
- DO NOT INSTALL ADVANCE WARNING SIGNS MORE THAN 3 DAYS PRIOR TO BEGINNING OF WORK.
- ALL SIGN SPACING DIMENSIONS ARE APPROXIMATE, FIELD ADJUST AS NECESSARY OR AS DIRECTED.
- USE PORTABLE WORK ZONE SIGNS ONLY WITH PORTABLE WORK ZONE SIGN STANDS SPECIFICALLY DESIGNED FOR ONE ANOTHER. PORTABLE WORK ZONE SIGNS MAY BE ROLL UP OR APPROVED COMPOSITE.
- PROVIDE PORTABLE WORK ZONE SIGN STANDS, PORTABLE SIGNS AND SIGN SHEETING WHICH ARE LISTED ON THE NORTH CAROLINA DEPARTMENT OF TRANSPORTATION'S APPROVED PRODUCT LIST OR ACCEPTED AS TRAFFIC QUALIFIED BY THE TRAFFIC CONTROL UNIT.
- ** TWO-WAY UNDIVIDED ADVANCE WARNING SIGN CONFIGURATION MAY BE USED ON URBAN MULTI-LANE FACILITIES WHERE CONDITIONS LIMIT THE USE OF DUAL MOUNTED SIGNS AS DETERMINED BY THE ENGINEER.

LEGEND

- ◀ PORTABLE SIGN
- ➡ DIRECTION OF TRAFFIC FLOW

SHEET 1 OF 1

APPROVED: _____ DATE: _____	DETAIL DRAWING FOR TWO-WAY UNDIVIDED ADVANCED WORK ZONE WARNING SIGNS		
SEAL	SCALE: NONE		
	DATE: _____		REVISIONS
	DESIGN BY: _____		7-98 10/01
	REVIEWED BY: _____		10-98 03/04
		01/01 11/04	

17-OCT-2007 08:30
 \\ADOT\DFS\RD0101\GROUPS-WZTCCC\designgroup4\resurfacing\resurfacing2007\div14\c20940_14cr102013etc_cherclay.nc294_2wayundivurbfrwys\july2006.dgn
 pseymore AT WZTCC237502