

GENERAL NOTES

CHANGES MAY BE REQUIRED WHEN PHYSICAL DIMENSIONS IN THE DETAIL DRAWINGS, STANDARD DETAILS AND ROADWAY DETAILS ARE NOT ATTAINABLE TO MEET FIELD CONDITIONS, OR RESULT IN DUPLICATE, OR UNDESIRE OVERLAPPING OF DEVICES. MODIFICATION MAY INCLUDE: MOVING, SUPPLEMENTING, COVERING OR REMOVAL OF DEVICES, AS DIRECTED BY THE ENGINEER.

THE FOLLOWING GENERAL NOTES APPLY AT ALL TIMES FOR THE DURATION OF THE CONSTRUCTION PROJECT, EXCEPT WHEN OTHERWISE NOTED IN THE PLAN, OR DIRECTED BY THE ENGINEER.

TRAFFIC PATTERN ALTERATIONS

- A) NOTIFY THE ENGINEER TWENTY ONE (21) CALENDAR DAYS PRIOR TO ANY TRAFFIC PATTERN ALTERATION.

SIGNING

- B) PROVIDE DETOUR SIGNING WITHIN AND OFF THE PROJECT LIMITS.
 C) COVER OR REMOVE ALL DETOUR SIGNS WITHIN AND OFF THE PROJECT LIMITS WHEN A DETOUR IS NOT IN OPERATION.
 D) ENSURE ALL NECESSARY SIGNING IS IN PLACE PRIOR TO ALTERING ANY TRAFFIC PATTERN.

TRAFFIC CONTROL DEVICES

- E) PLACE TYPE III BARRICADES, WITH "ROAD CLOSED" SIGN R11-2 ATTACHED, OF SUFFICIENT LENGTH TO CLOSE ENTIRE ROADWAY.

PAVEMENT MARKINGS AND MARKERS

- F) INSTALL PAVEMENT MARKINGS AND PAVEMENT MARKERS ON THE FINAL SURFACE AS FOLLOWS:

ROAD NAME	MARKING	MARKER
LAMM ROAD	THERMOPLASTIC	PERMANENT RAISED PAVEMENT MARKERS

- G) TIE PROPOSED PAVEMENT MARKING LINES TO EXISTING PAVEMENT MARKING LINES.

PHASING

NOTES: ENSURE PROPOSED ROAD CLOSURE AND DETOUR ROUTE IS COORDINATED THROUGH DIVISION OFFICE WITH THE WILSON COUNTY SCHOOLS AND WILSON COUNTY EMERGENCY MEDICAL SERVICES PRIOR TO LAMM ROAD CLOSURE AND DETOUR OPERATION.

USING INCIDENTAL STONE AS NECESSARY, MAINTAIN VEHICULAR ACCESS TO ALL DRIVEWAYS WITHIN THE CLOSED PORTION OF SR 1001 (LAMM ROAD) DURING THE LIFE OF THE CONTRACT UNLESS OTHERWISE NOTED IN THE PHASING OR DIRECTED BY THE ENGINEER.

PHASE I

STEP 1 - USING ROADWAY STANDARD DRAWING NO. 1101.03, SHEET 1 OF 9, (AS NEEDED) AND TCP-3 INSTALL OFFSITE DETOUR SIGNS AND DEVICES TO CLOSE SR 1001 (LAMM ROAD) TO TRAFFIC AT -L- STA. 13+50+/- AND STA. 21+00+/-.

STEP 2 - REMOVE EXISTING STRUCTURE AND PAVEMENT, AND CONSTRUCT PROPOSED ROADWAY AND STRUCTURE UP TO AND INCLUDING THE FINAL SURFACE COURSE FROM -L- STA. 13+50+/- TO STA. 21+00+/- . (SEE ROADWAY AND STRUCTURE PLANS)

USE FLAGGERS AS NEEDED TO MAINTAIN LOCAL TRAFFIC WITHIN ROAD CLOSURE. FLAGGING WILL BE INCIDENTAL TO THE COST OF THE CONTRACT.

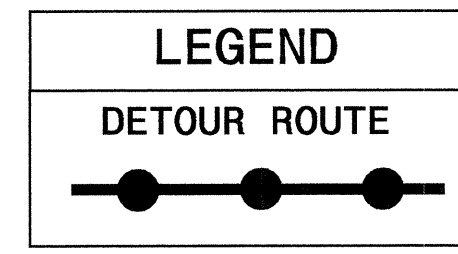
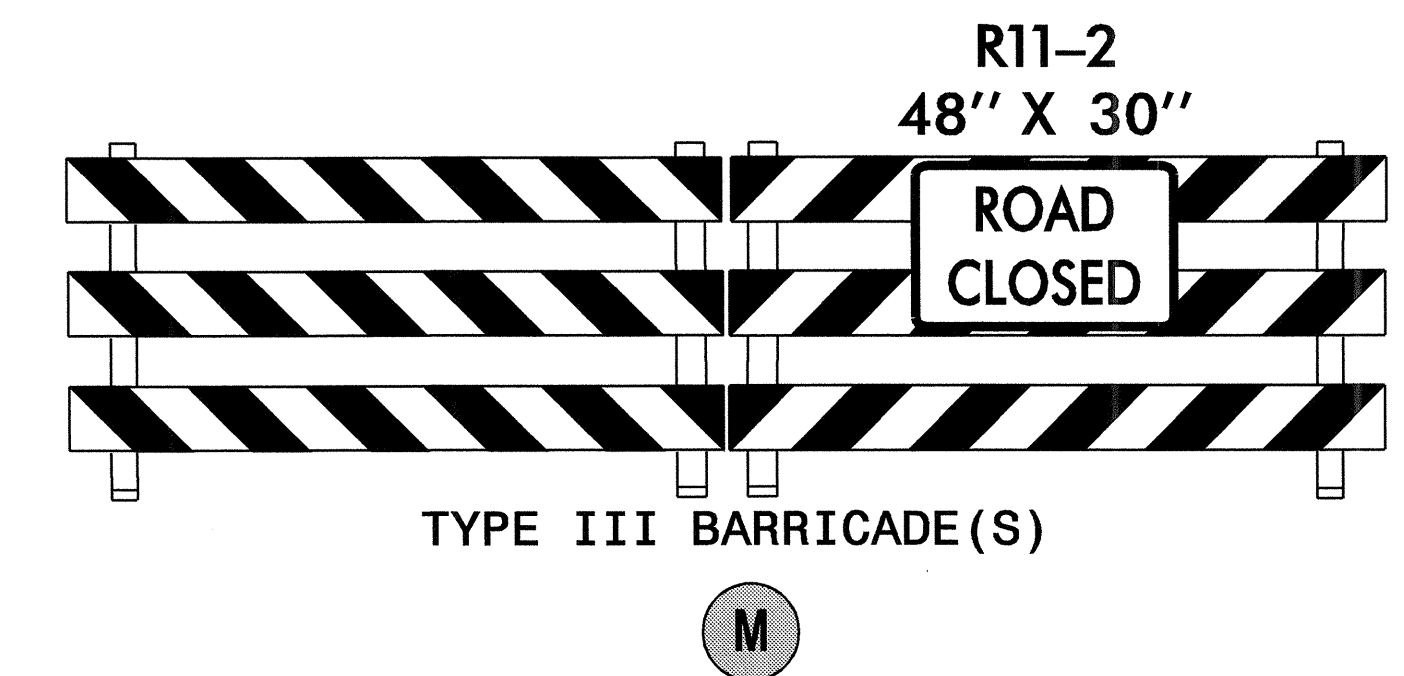
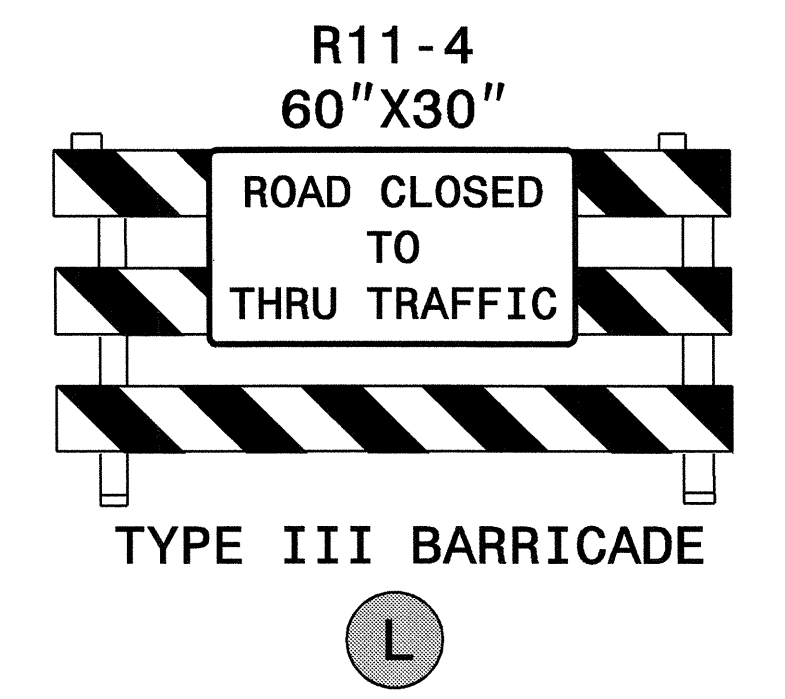
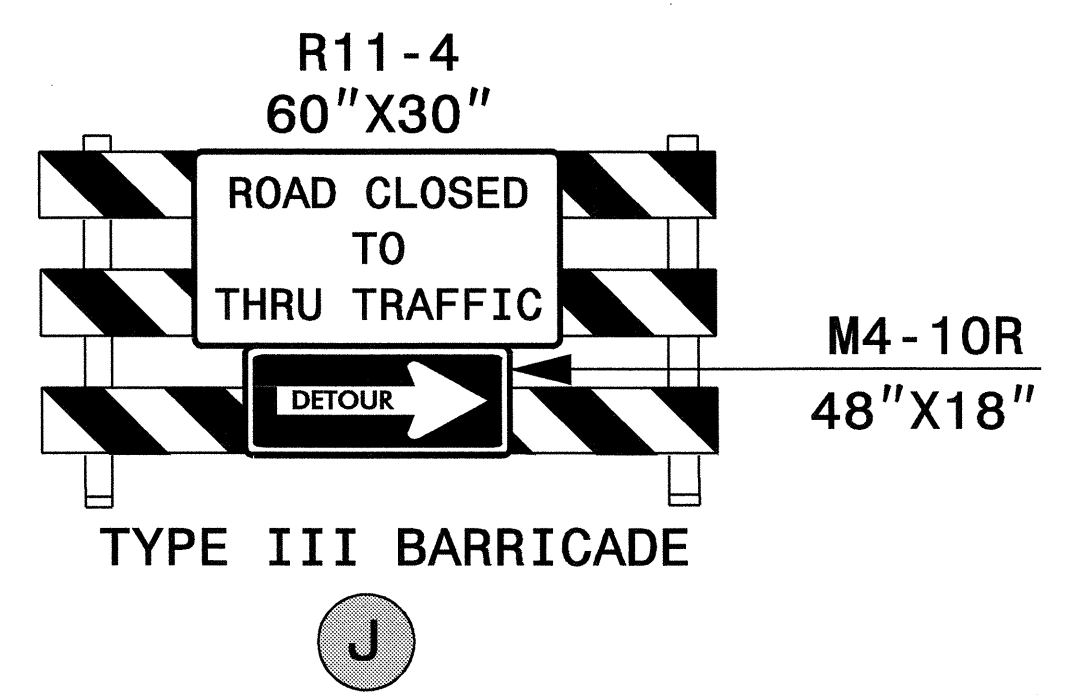
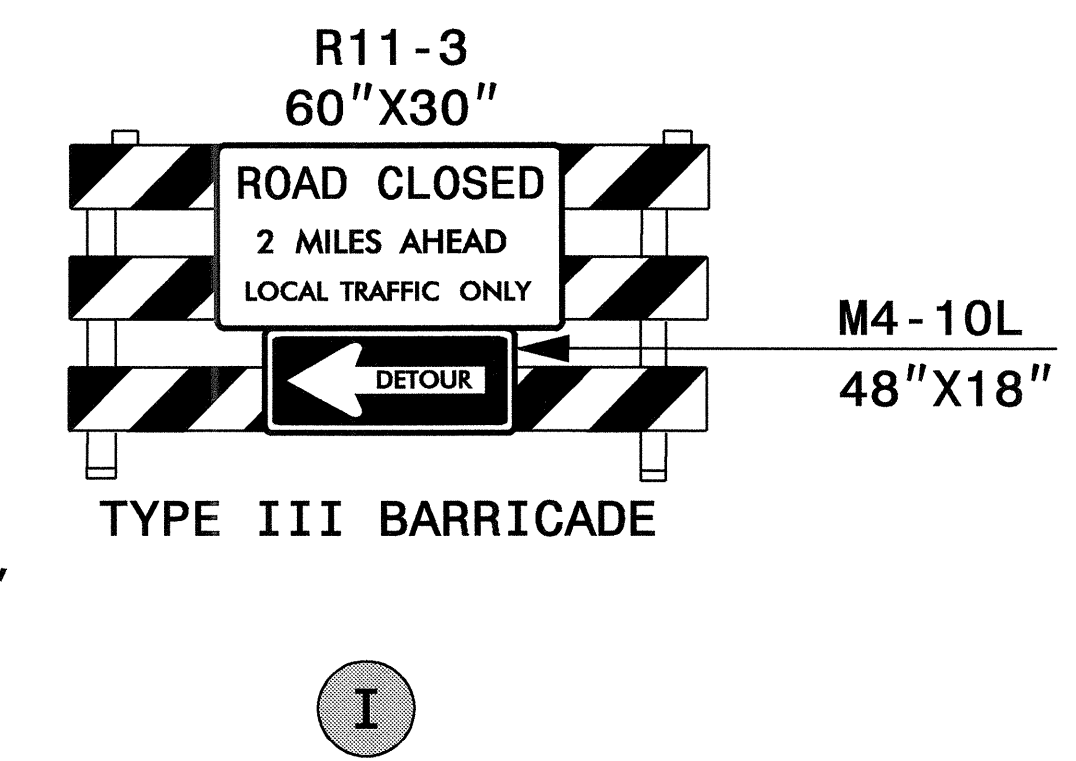
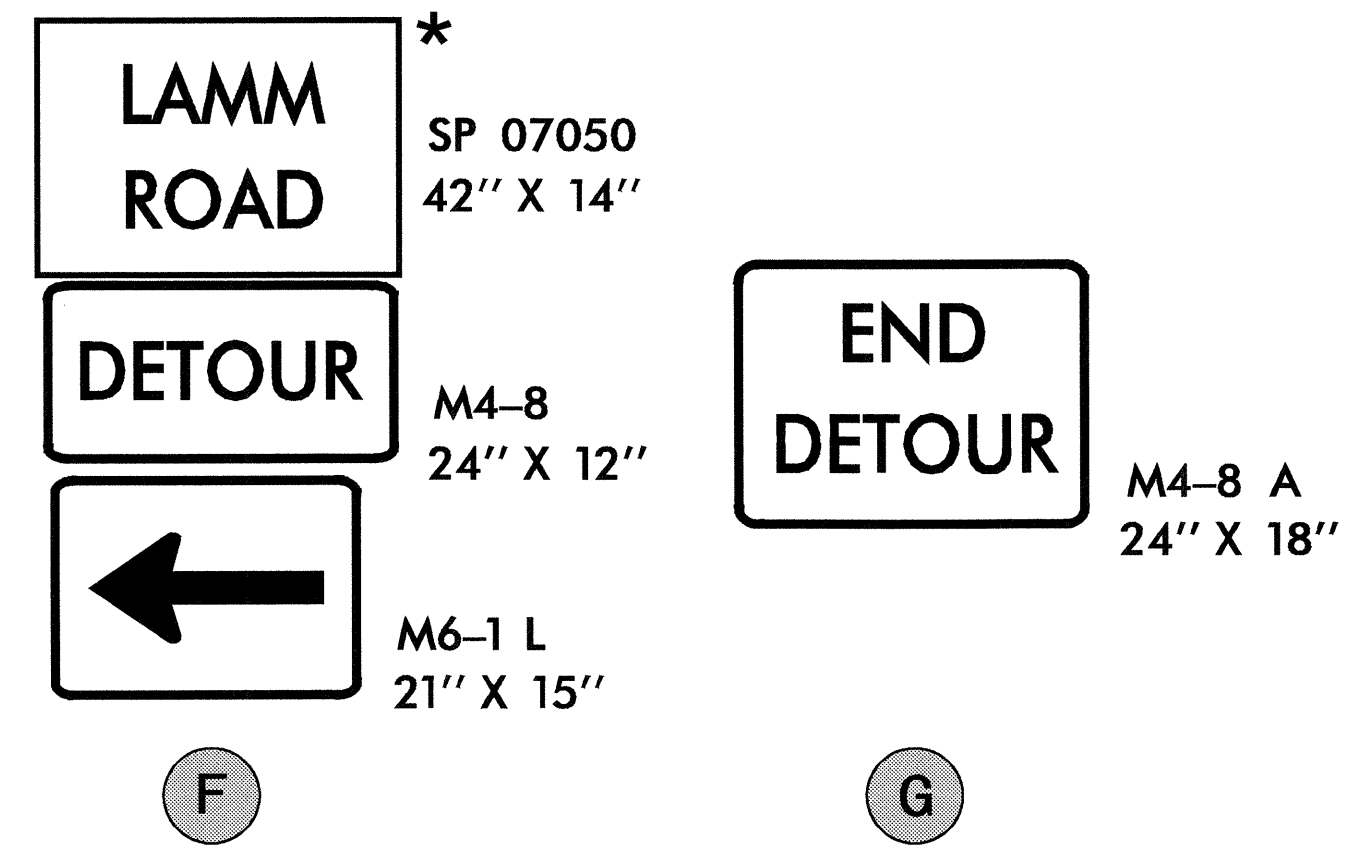
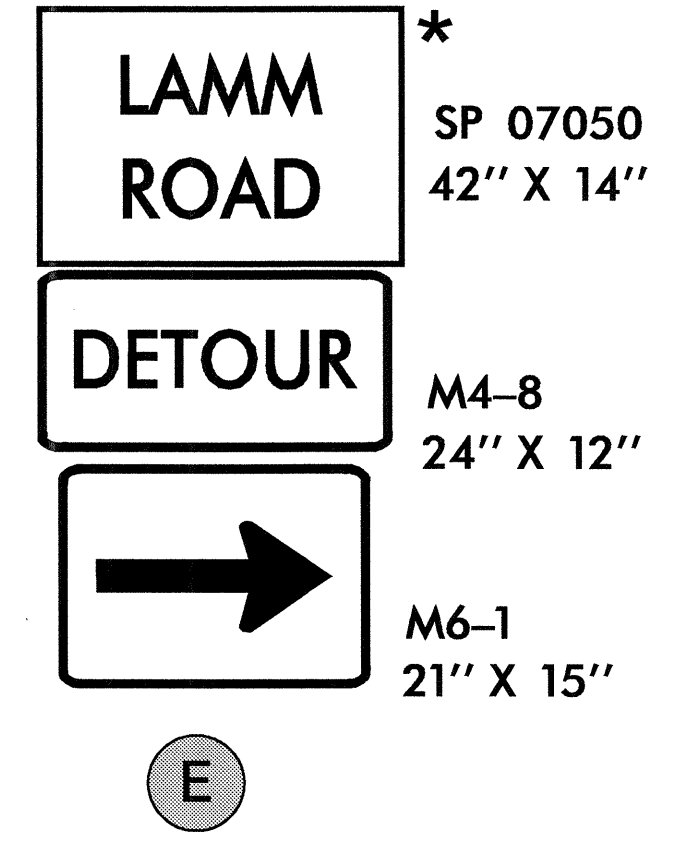
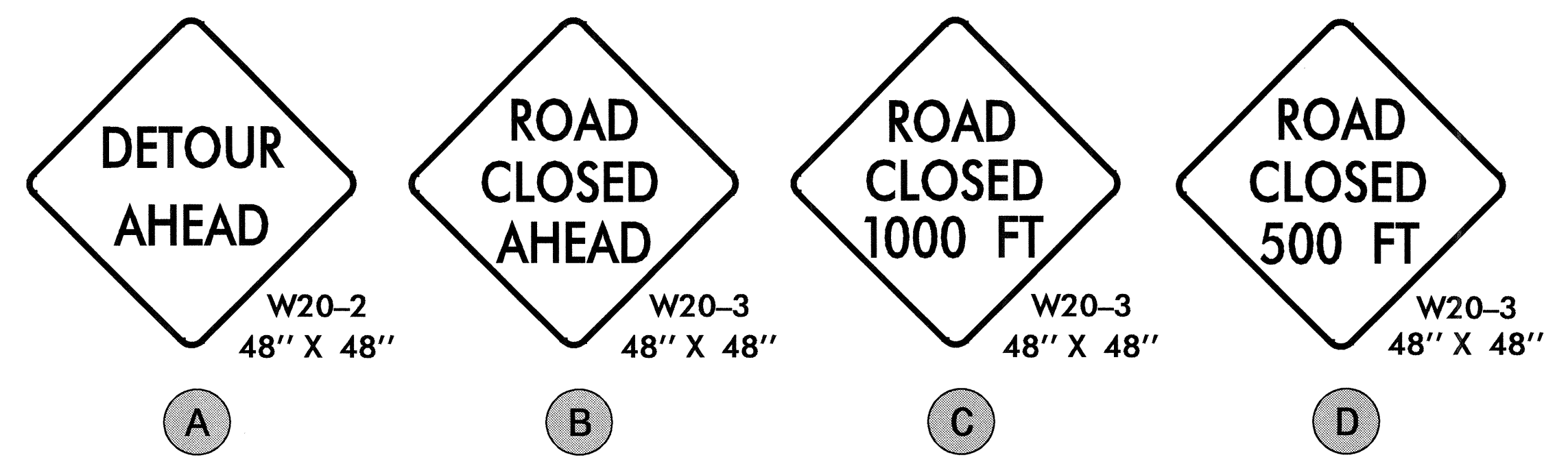
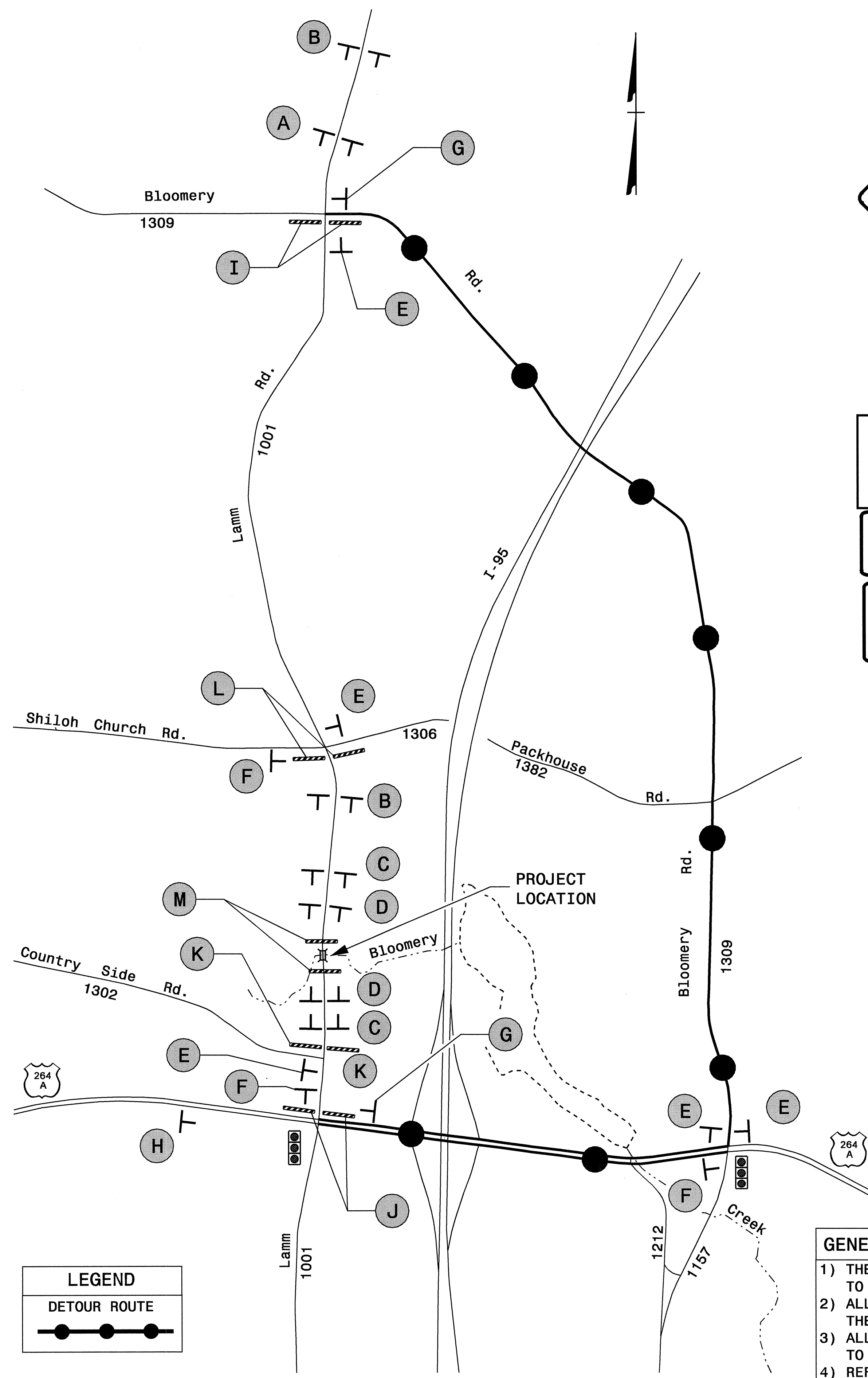
AT NO TIME SHOULD THE DIFFERENCE IN ELEVATION BETWEEN ROADWAY SURFACES EXCEED 3" WITHIN THE AREA BEING MAINTAINED FOR LOCAL TRAFFIC.

- PLACE PROPOSED PAVEMENT MARKINGS AND MARKERS ON SR 1001 (LAMM ROAD).

STEP 3 - REMOVE ALL TRAFFIC CONTROL DEVICES AND RE-OPEN SR 1001 (LAMM ROAD) TO A 2-LANE, 2-WAY TRAFFIC PATTERN.

29-JUN-2007 13:35
 C:\p00000001\proj\109\projects-b\4326\traffic\trafficcontrol\top\B-4326_TC-TCP_2.dgn
 AT 12:22:29

APPROVED: <i>Jessica D. Kuse</i> DATE: 6/30/07		GENERAL NOTES / PHASING	
	SCALE: NONE		REVISIONS
	DATE: 06/07		
	DWG. BY: RMG		
	DESIGN BY: RMG		
REVIEWED BY: JDK			



- GENERAL NOTES:**
- 1) THE WORK OF COVERING ANY EXISTING SIGNS WILL BE INCIDENTAL TO THE DETOUR SIGNING.
 - 2) ALL DETOUR SIGNING SHOWN ON THIS SHEET WILL BE PAID FOR AT THE CONTRACT UNIT PRICE FOR WORK ZONE SIGNS - "STATIONARY".
 - 3) ALL SIGN LOCATIONS WILL BE VERIFIED BY THE ENGINEER PRIOR TO INSTALLATION.
 - 4) REFER TO RSD 1101.03, SHEET 1 OF 9 FOR ADDITIONAL INFORMATION REGARDING SIGN PLACEMENT AND SPACING.
 - 5) THE DIVISION WILL BE RESPONSIBLE TO MONITOR AND ADJUST SIGNAL TIMINGS AS NECESSARY.

APPROVED: *Jessica D. Kusi* DATE: 6/30/07

SEAL:

OFF-SITE DETOUR

SCALE: NONE		REVISIONS
DATE: 02/07		
DWG. BY: RMG		
DESIGN BY: RMG		
REVIEWED BY: JDK		

29-JUN-2007 13:35
 \\dot\dfs\root\...
 ...
 ...

