

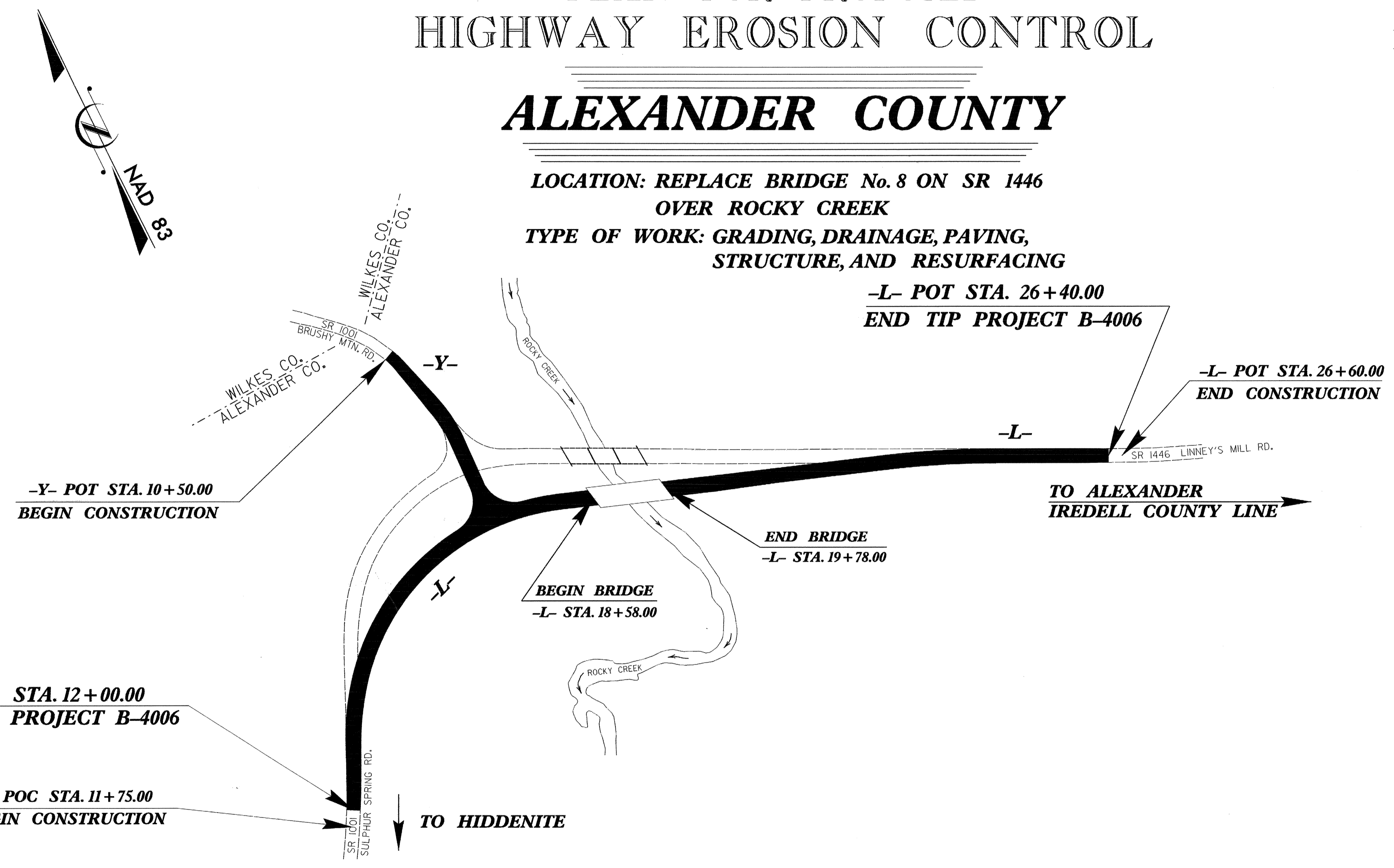
TIP PROJECT: B-4006

STATE OF NORTH CAROLINA
 DIVISION OF HIGHWAYS
 PLAN FOR PROPOSED
 HIGHWAY EROSION CONTROL

ALEXANDER COUNTY

**LOCATION: REPLACE BRIDGE No. 8 ON SR 1446
 OVER ROCKY CREEK**
**TYPE OF WORK: GRADING, DRAINAGE, PAVING,
 STRUCTURE, AND RESURFACING**

**-L- POT STA. 26 + 40.00
 END TIP PROJECT B-4006**



STATE	STATE PROJECT REFERENCE NO.	SHEET NO.	TOTAL SHEETS
N.C.	B-4006	EC-1	
STATE PROJ. NO.	F.A. PROJ. NO.	DESCRIPTION	

EROSION AND SEDIMENT CONTROL MEASURES

Std. #	Description	Symbol
	Streambank Reforestation	
1630.03	Temporary Silt Ditch	
1630.05	Temporary Diversion	
1605.01	Temporary Silt Fence	
1606.01	Special Sediment Control Fence	
1622.01	Temporary Berms and Slope Drains	
1630.01	Riser Basin	
1630.02	Silt Basin Type B	
1633.01	Temporary Rock Silt Check Type-A	
	Temporary Rock Silt Check Type-B	
1634.01	Temporary Rock Sediment Dam Type-A	
1634.02	Temporary Rock Sediment Dam Type-B	
1635.01	Rock Pipe Inlet Sediment Trap Type-A	
1635.02	Rock Pipe Inlet Sediment Trap Type-B	
1630.04	Stilling Basin	
	Rock Inlet Sediment Trap:	
1632.01	Type A	
1632.02	Type B	
1632.03	Type C	
	Skimmer Basin	
	Tiered Skimmer Basin	

**THIS PROJECT CONTAINS
 EROSION CONTROL PLANS
 FOR CLEARING AND
 GRUBBING PHASE OF
 CONSTRUCTION.**

GRAPHIC SCALE

0

PLANS

0

PROFILE (HORIZONTAL)

0

PROFILE (VERTICAL)

ROADSIDE ENVIRONMENTAL UNIT
 DIVISION OF HIGHWAYS
 STATE OF NORTH CAROLINA

Prepared In the Office of:
ROADSIDE ENVIRONMENTAL UNIT
 1 South Wilmington St.
 Raleigh, NC 27611

2006 STANDARD SPECIFICATIONS

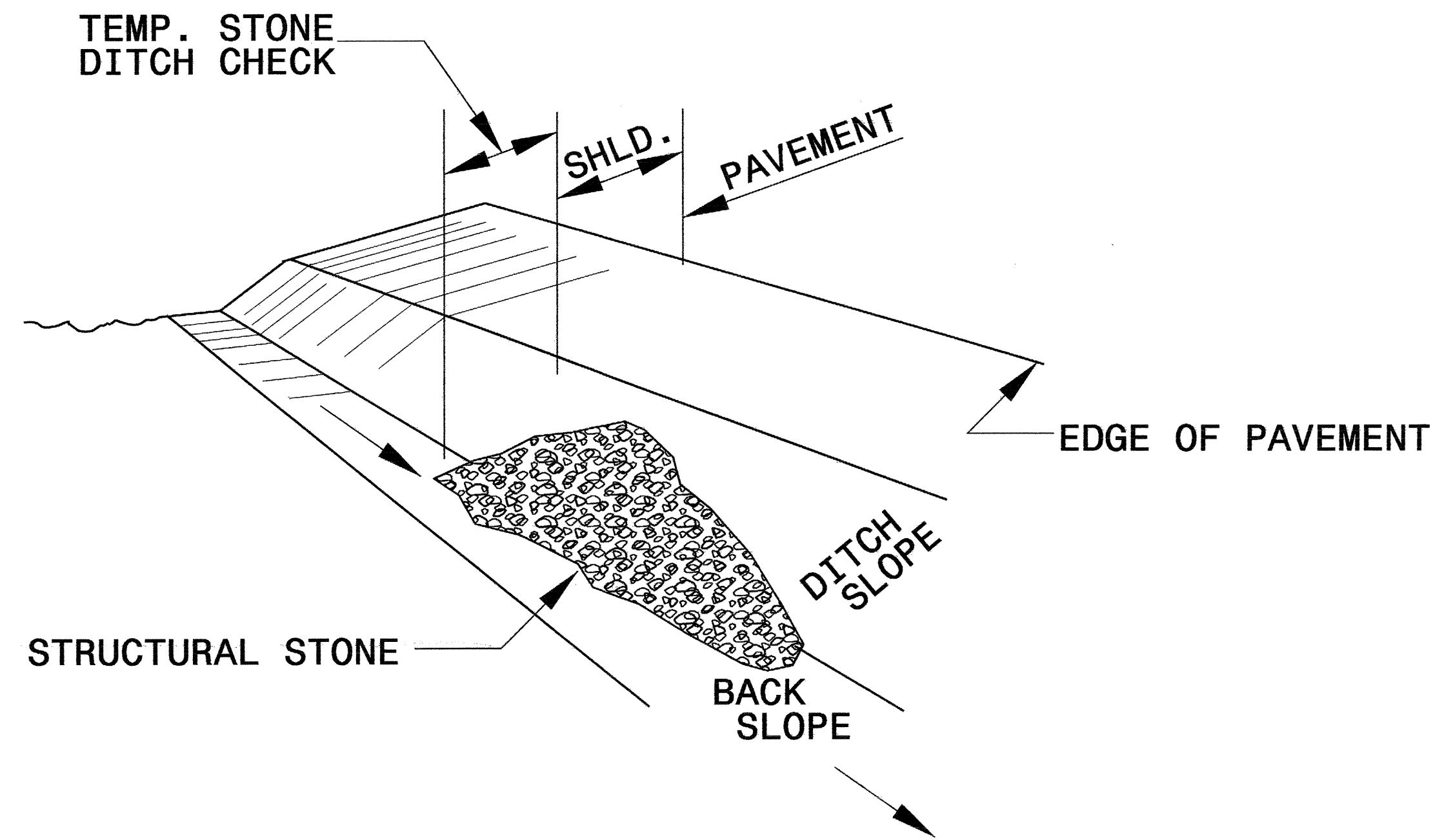
Roadway Standard Drawings

The following roadway english standards as appear in "Roadway Standard Drawings"- Roadway Design Unit - N. C. Department of Transportation - Raleigh, N. C., dated July 18, 2006 and the latest revision thereto are applicable to this project and by reference hereby are considered a part of these plans.

1605.01 Temporary Silt Fence	1632.03 Rock Inlet Sediment Trap Type C
1607.01 Gravel Construction Entrance	1633.01 Temporary Rock Silt Check Type A
1622.01 Temporary Berms and Slope Drains	1634.02 Temporary Rock Sediment Dam Type B
1630.02 Silt Basin Type B	1635.02 Rock Pipe Inlet Sediment Trap Type B
1630.03 Temporary Silt Ditch	
1630.05 Temporary Diversion	

PROJECT REFERENCE NO. B-4006	SHEET NO. EC-2
RW SHEET NO.	
ROADWAY DESIGN ENGINEER	HYDRAULICS ENGINEER

TEMPORARY ROCK SILT CHECK TYPE 'B' DETAIL

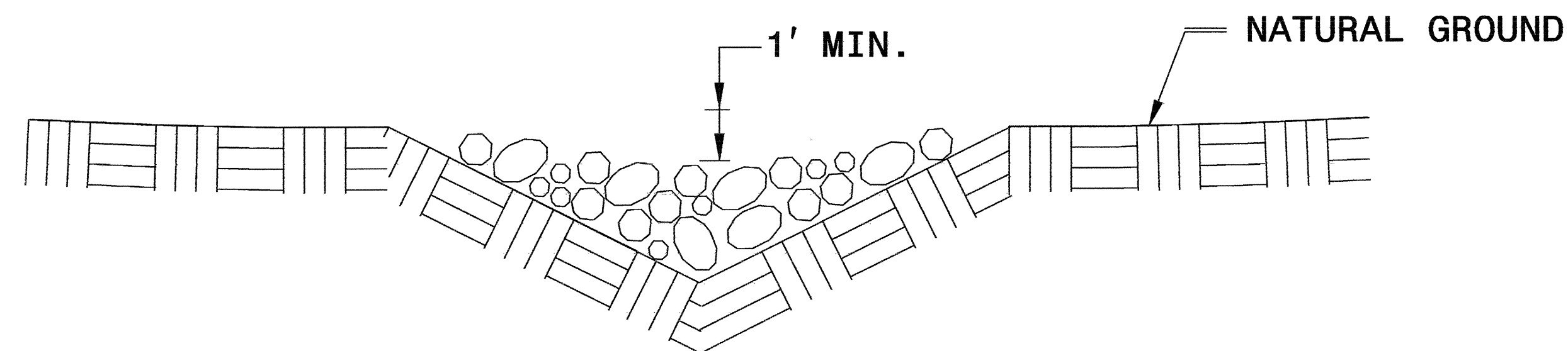


ISOMETRIC VIEW

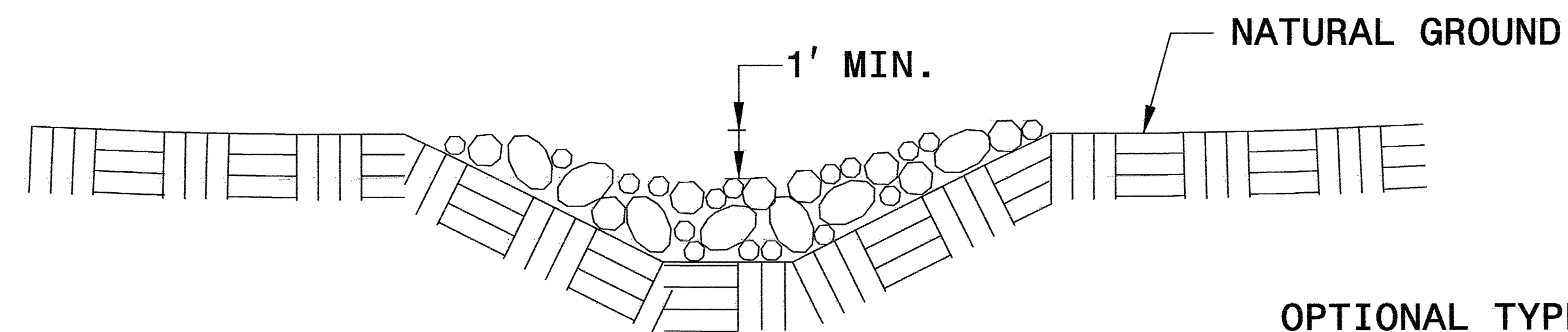
NOTES:

USE CLASS 'B' EROSION CONTROL STONE FOR STRUCTURAL STONE.

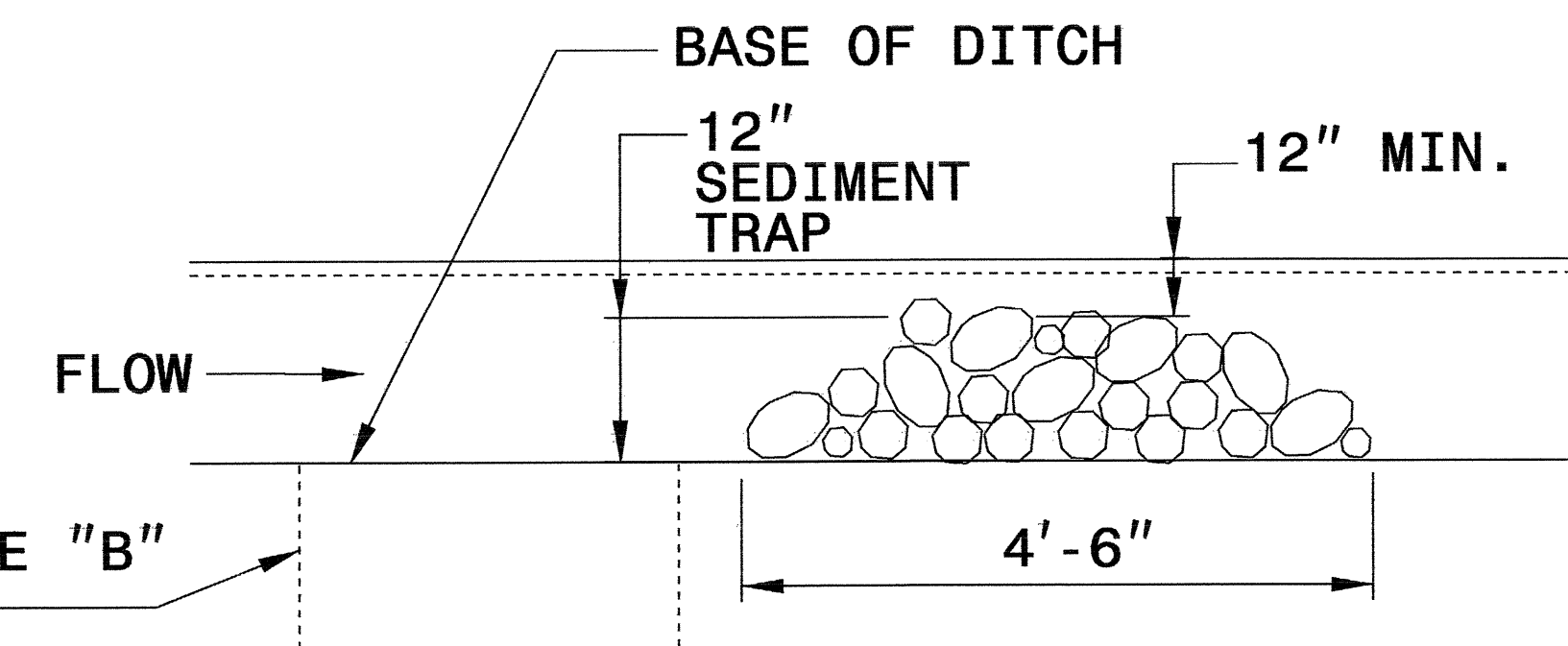
THE ENGINEER MAY DIRECT THE OPTION OF CLASS "A" STONE FOR SITES HAVING LESS THAN ONE (1) ACRE DRAINAGE AREA AND A DITCH GRADE LESS THAN 3%.



**CROSS SECTION
VEE DITCH**



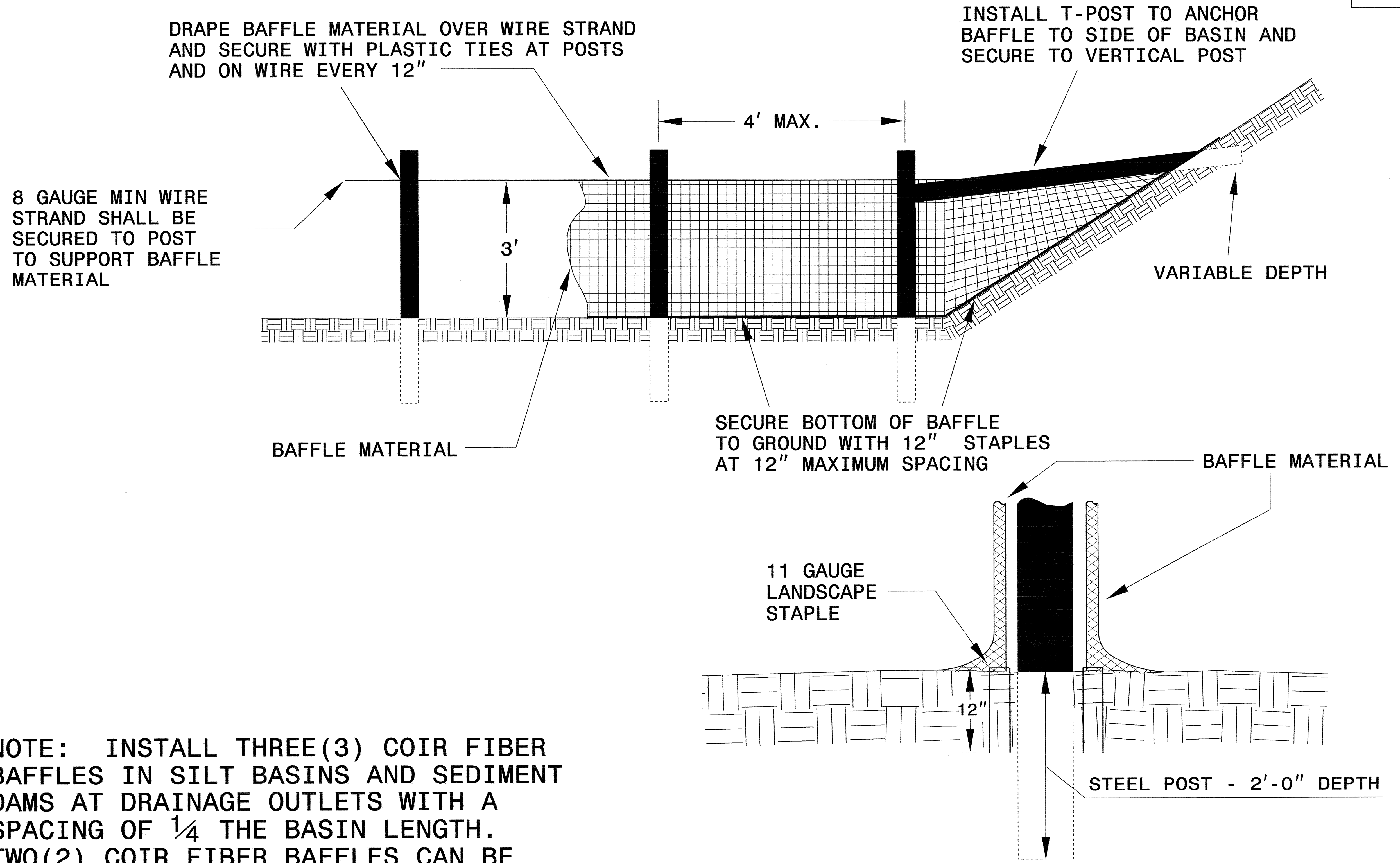
**CROSS SECTION
TRAPEZOIDAL DITCH**



ELEVATION VIEW

PROJECT REFERENCE NO.	SHEET NO.
B-4006	EC-2A
RW SHEET NO.	
ROADWAY DESIGN ENGINEER	HYDRAULICS ENGINEER

COIR FIBER BAFFLE DETAIL

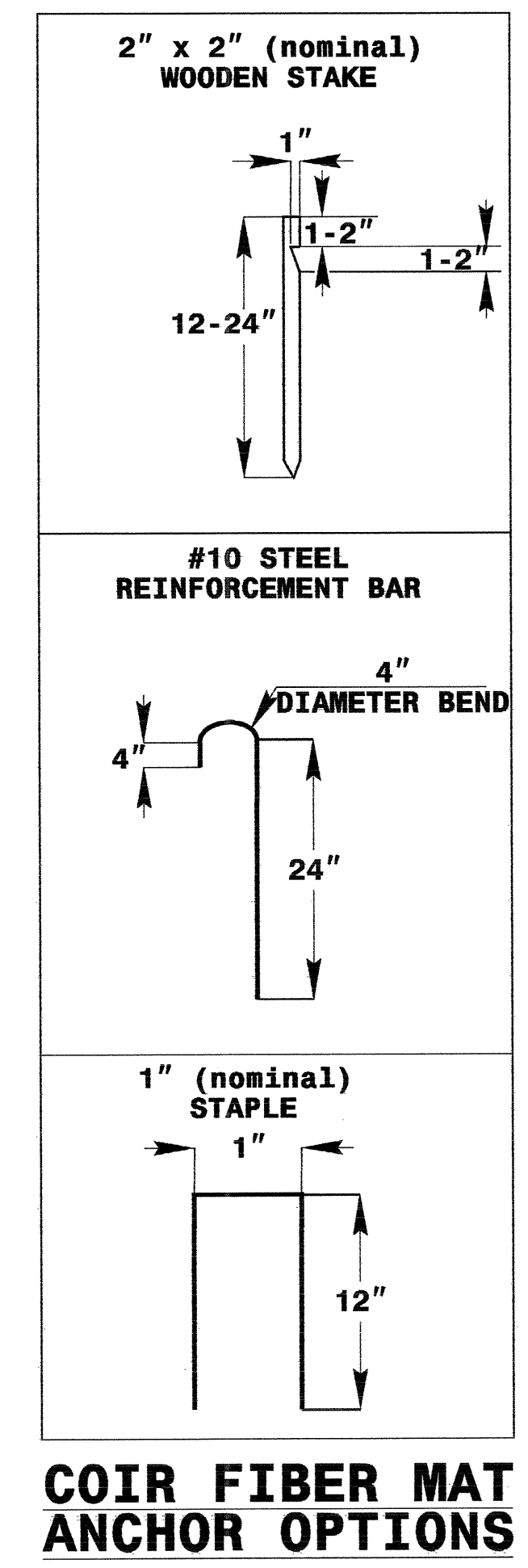
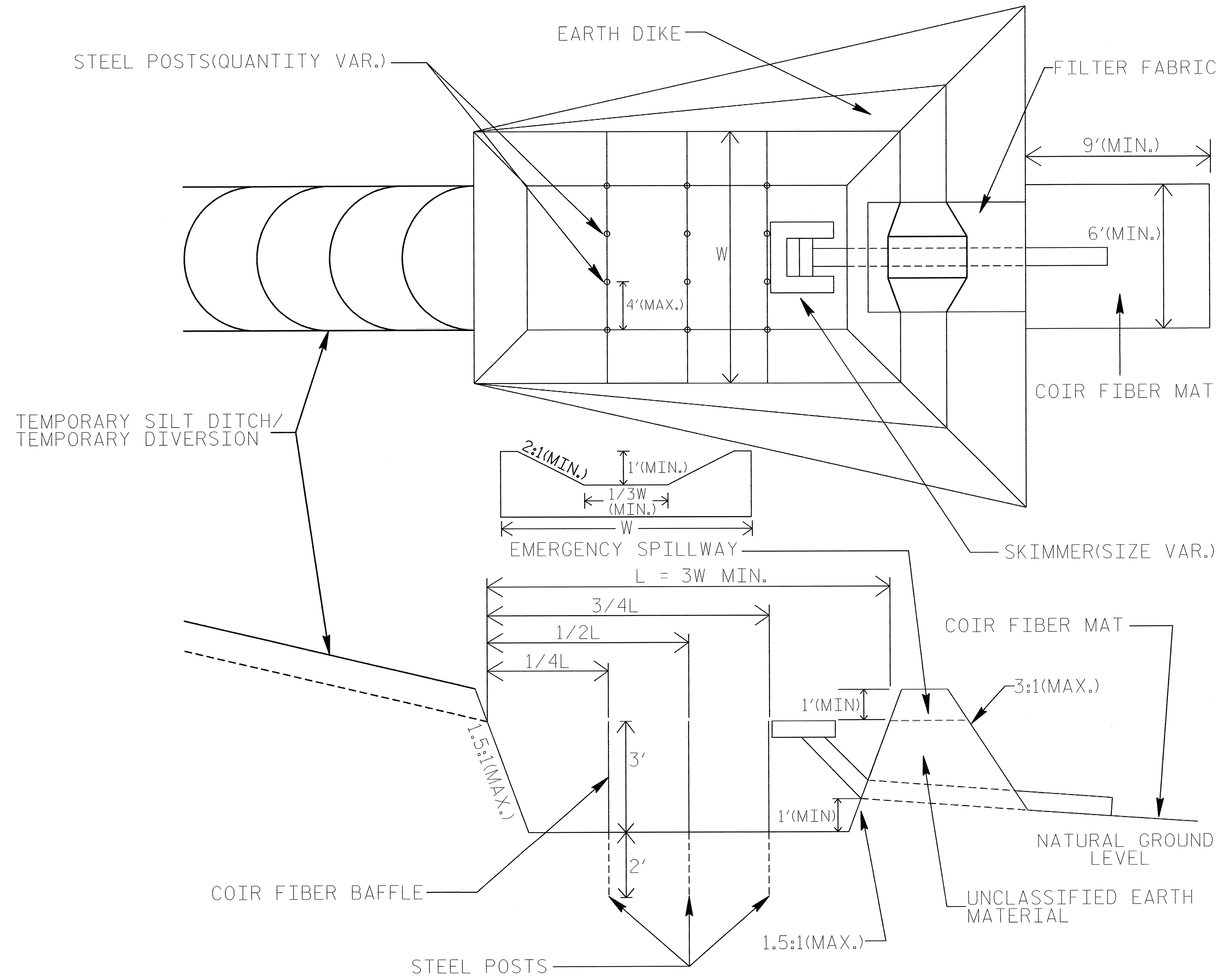


NOTE: INSTALL THREE(3) COIR FIBER BAFFLES IN SILT BASINS AND SEDIMENT DAMS AT DRAINAGE OUTLETS WITH A SPACING OF $\frac{1}{4}$ THE BASIN LENGTH. TWO(2) COIR FIBER BAFFLES CAN BE INSTALLED IN SILT BASINS AND DAMS LESS THAN 20 FT. IN LENGTH WITH A SPACING OF $\frac{1}{3}$ THE BASIN LENGTH.

BAFFLE MATERIAL SHALL BE SECURED TO THE BOTTOM AND SIDES OF BASIN USING 12" LANDSCAPE STAPLES

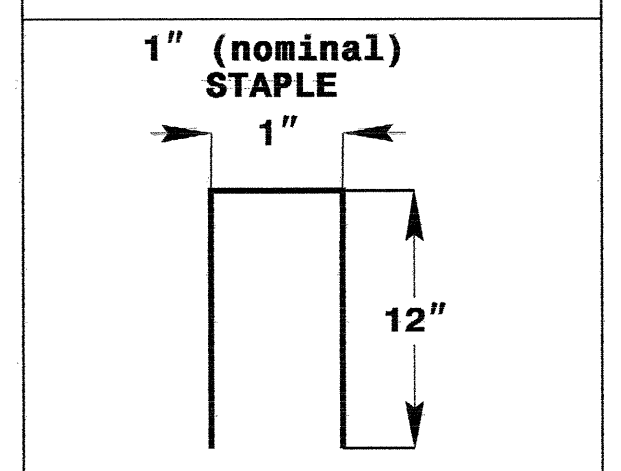
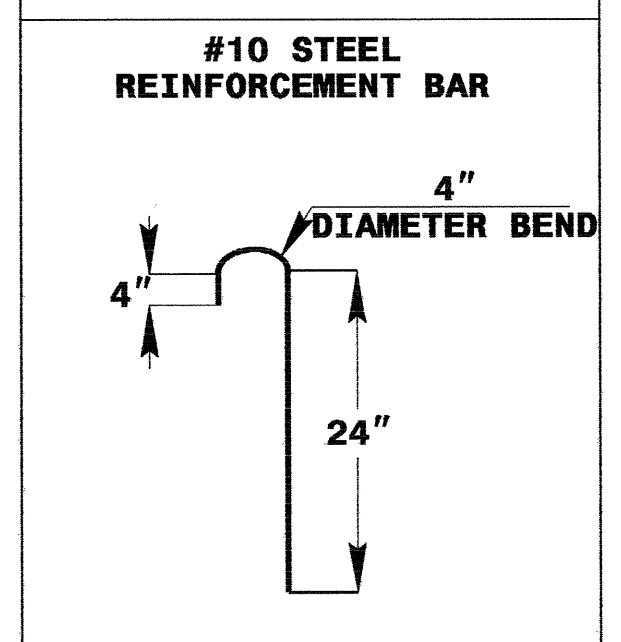
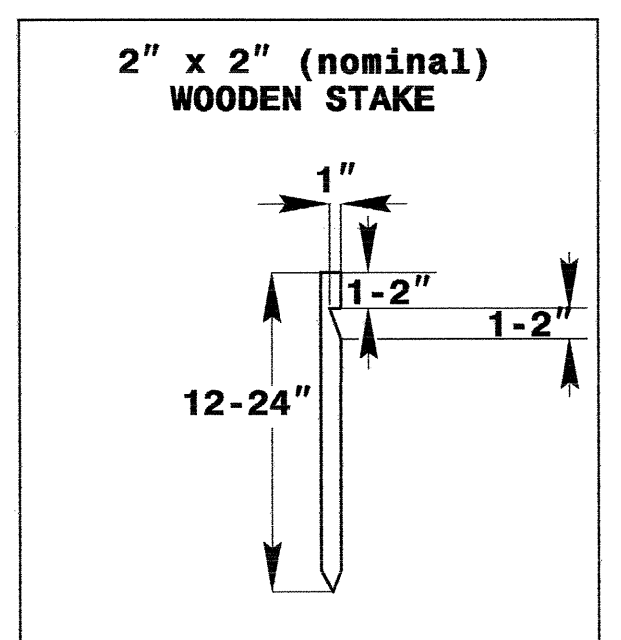
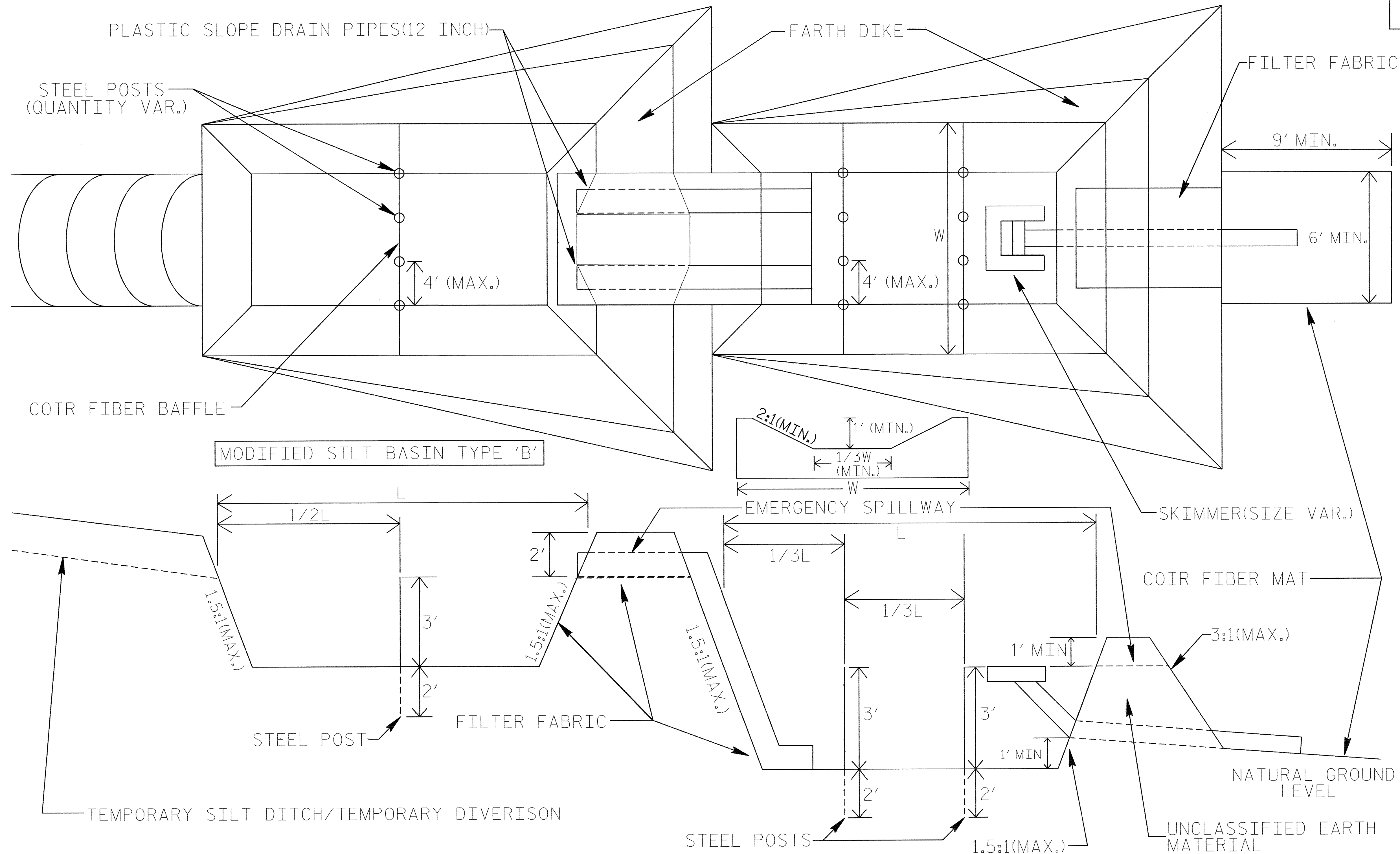
SKIMMER BASIN WITH BAFFLES DETAIL

PROJECT REFERENCE NO. B-4006	SHEET NO. EC-2B
RW SHEET NO.	
ROADWAY DESIGN ENGINEER	HYDRAULICS ENGINEER



TIERED SKIMMER BASIN DETAIL

PROJECT REFERENCE NO. B-4006	SHEET NO. EC-2C
RW SHEET NO.	
ROADWAY DESIGN ENGINEER	HYDRAULICS ENGINEER



COIR FIBER MAT ANCHOR OPTIONS

NOTE
ADDITIONAL MODIFIED SILT BASINS TYPE 'B' MAY BE NEEDED DEPENDING ON SLOPE.

8/17/99

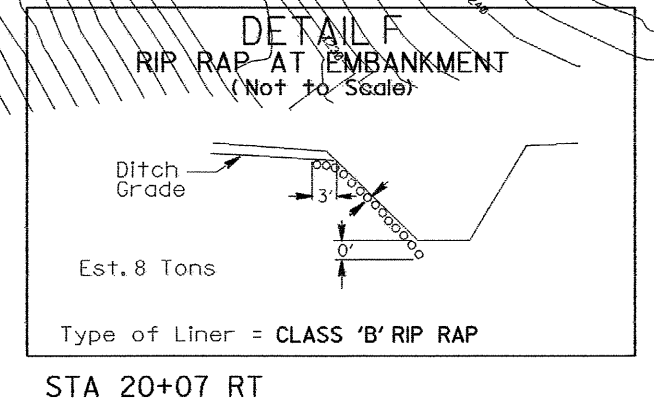
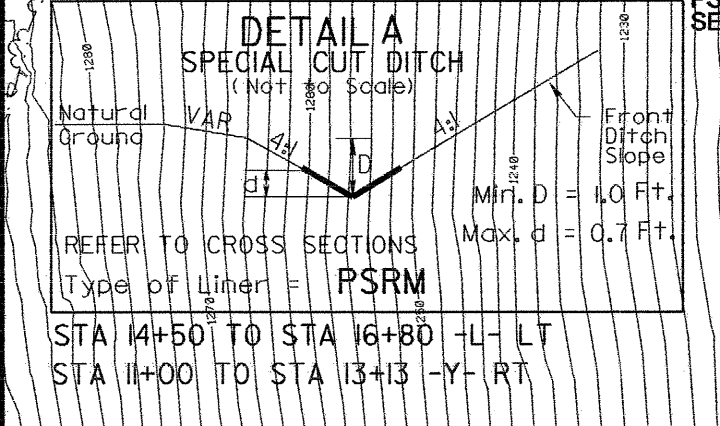
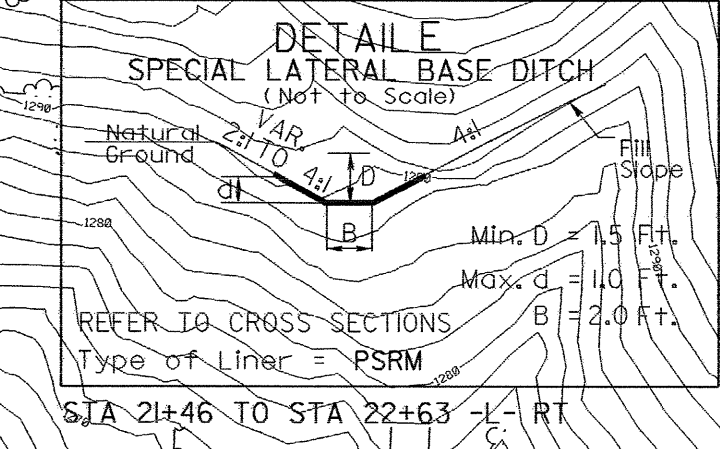
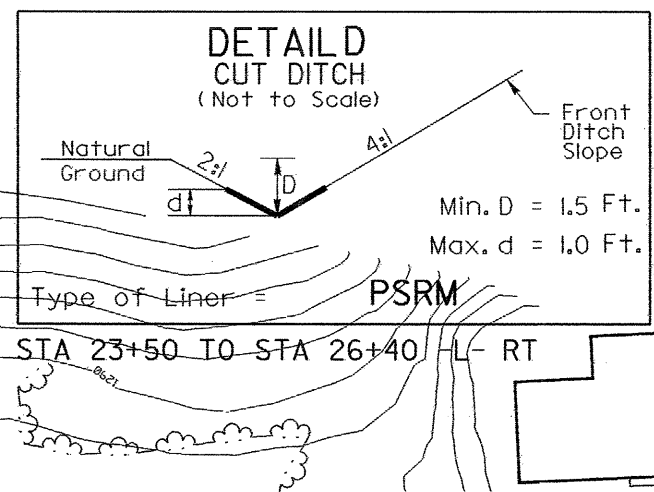
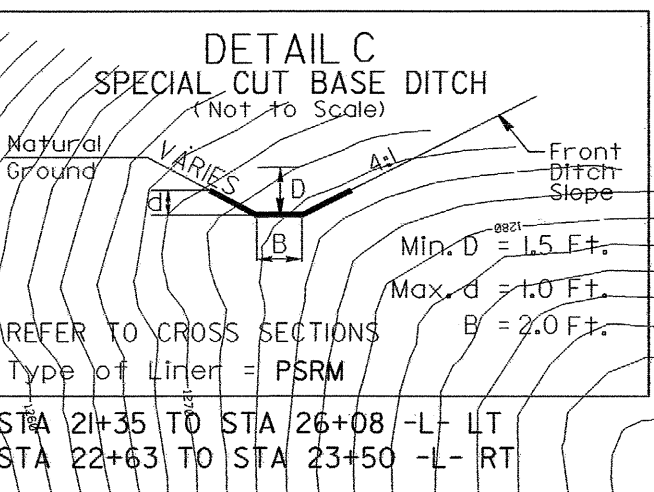
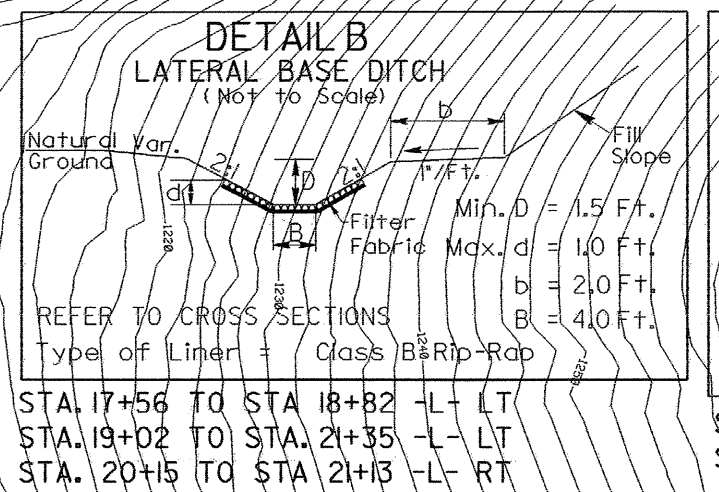
NOTE: UTILIZE SKIMMER BASIN AS STILLING BASIN WHERE APPLICABLE.

CLEARING AND GRUBBING EROSION CONTROL FOR CONSTRUCTION SHEET 04

NOTE: PLACE TEMPORARY ROCK SEDIMENT DAMS TYPE - B AND TEMPORARY ROCK SILT CHECKS TYPE - A AT DRAINAGE OUTLETS.

PROJECT REFERENCE NO. B-4006	SHEET NO. EC-04/CONST.04
RW SHEET NO. ROADWAY DESIGN ENGINEER	HYDRAULICS ENGINEER

BEGIN CONSTRUCTION
-Y- POC Sta. 10+50.00



75 x 24 x 3
2.5 inch Skimmer
with 2.375 inch
Orifice Diameter
8 ft. weir
ID 4.1

38 x 18 x 3
2.5 inch Skimmer
with 2.125 inch
Orifice Diameter
8 ft. weir
(See Tiered Skimmer
Basin Detail)
ID 4.3

Modified Silt Basin
Type 'B'
38 x 18 x 3
(See Tiered Skimmer
Basin Detail)
ID 4.3

15 x 5 x 3
4' weir
ID 4.4

END BRIDGE
-L- Sta. 19+78.00

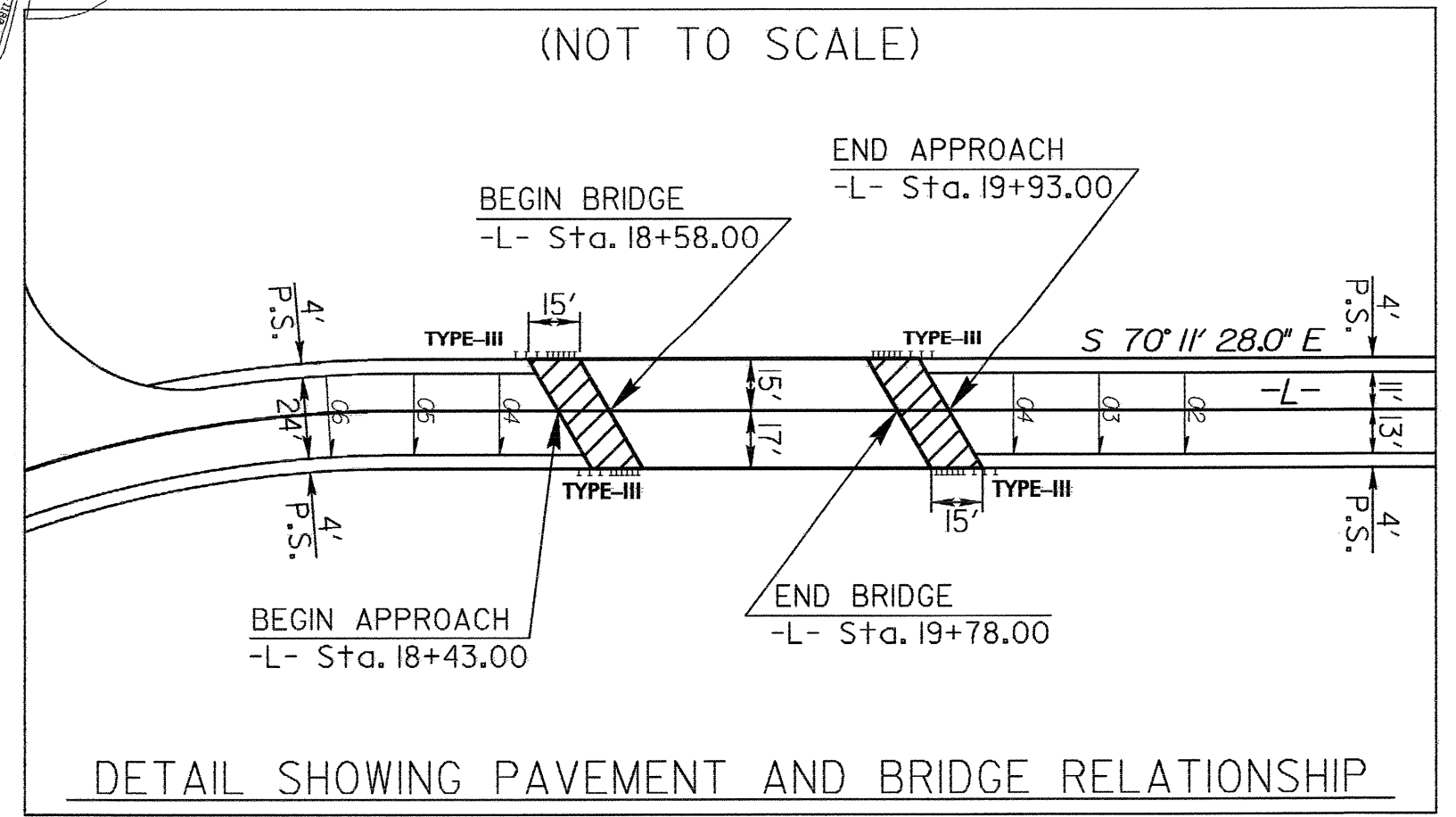
END CONSTRUCTION
-DWI- POT Sta. 12+30.00

END TIP PROJECT B-4006
-L- POT Sta. 26+40.00

END CONSTRUCTION
-L- POT Sta. 26+60.00

BEGIN TIP PROJECT B-4006
-L- POC Sta. 12+00.00

BEGIN CONSTRUCTION
-L- POC Sta. 11+75.00



NOTE: SEE SHEET 5 FOR -L- PROFILE
SEE SHEET 6 FOR -Y-, -DWI- & -DW2- PROFILES

REVISIONS

03-APR-2007 13:06
d:\reu_tip\br1996\ec\04\const\psh.dgn

NOTE:
UTILIZE SKIMMER BASIN AS STILLING BASIN
WHERE APPLICABLE.

PROJECT REFERENCE NO. B-4006	SHEET NO. EC-05/CONST.04
R/W SHEET NO.	
ROADWAY DESIGN ENGINEER	HYDRAULICS ENGINEER

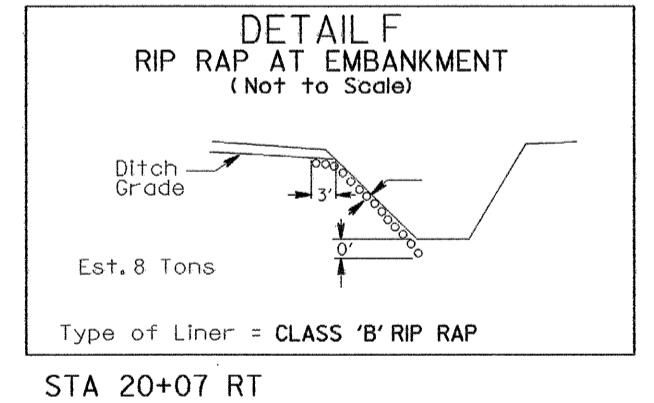
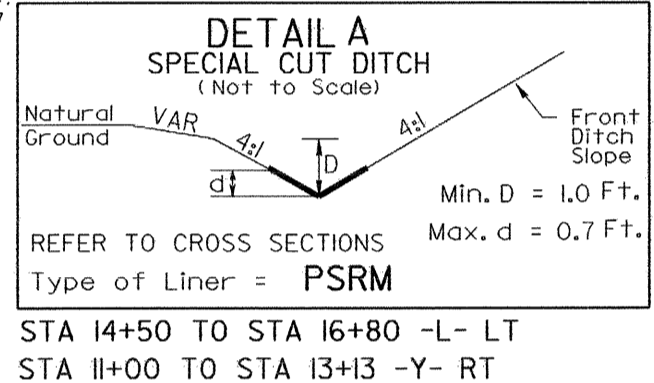
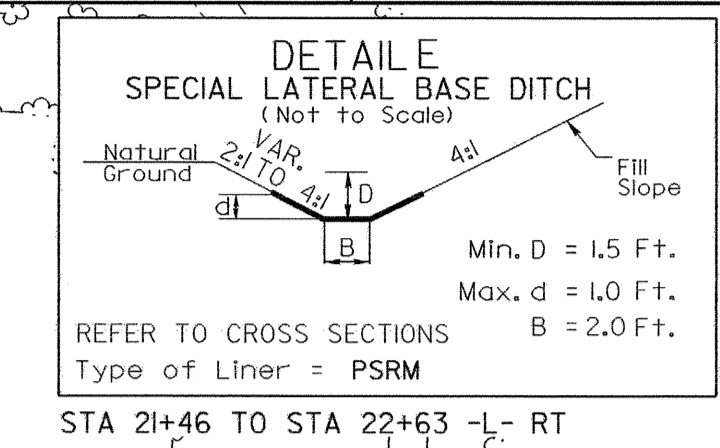
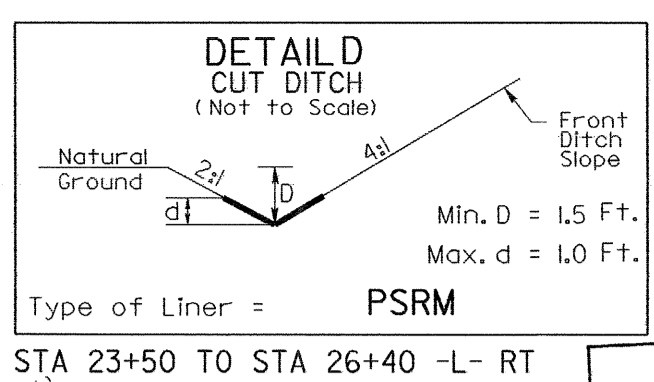
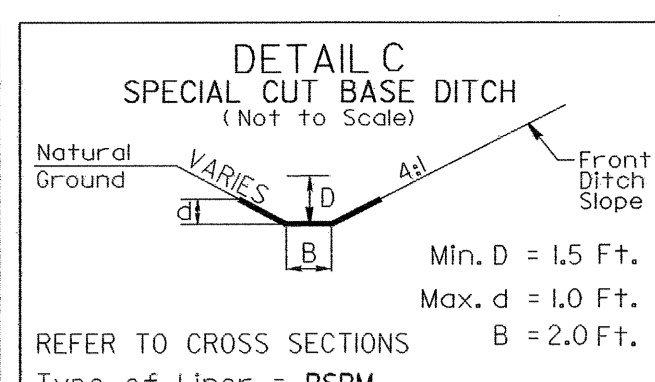
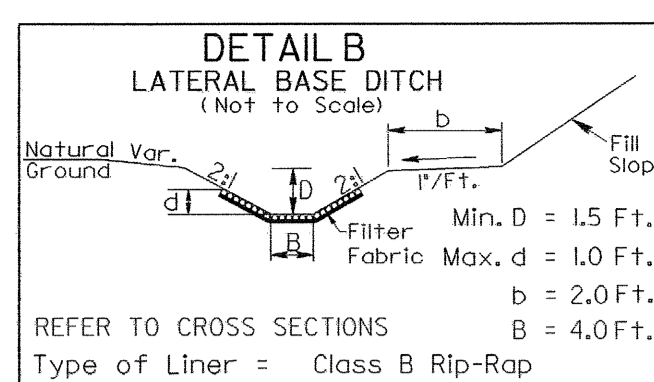
BEGIN CONSTRUCTION
-Y- POC Sta. 10+50.00

Modified Silt Basin
Type 'B'
33 x 16 x 3
2.0 inch Skimmer
with 2.0 inch
Orifice Diameter
8 ft. weir
(See Tiered Skimmer
Basin Detail)
ID 4.2

33 x 16 x 3
2.0 inch Skimmer
with 2.0 inch
Orifice Diameter
8 ft. weir
(See Tiered Skimmer
Basin Detail)
ID 4.2

25 x 10 x 3
1.5 inch Skimmer
with 1.375 inch
Orifice Diameter
6 ft. weir
(See Tiered Skimmer
Basin Detail)
ID 4.6

Modified Silt Basin
Type 'B'
25 x 10 x 3
2.5 inch Skimmer
with 2.375 inch
Orifice Diameter
8 ft. weir
(See Tiered Skimmer
Basin Detail)
ID 4.1

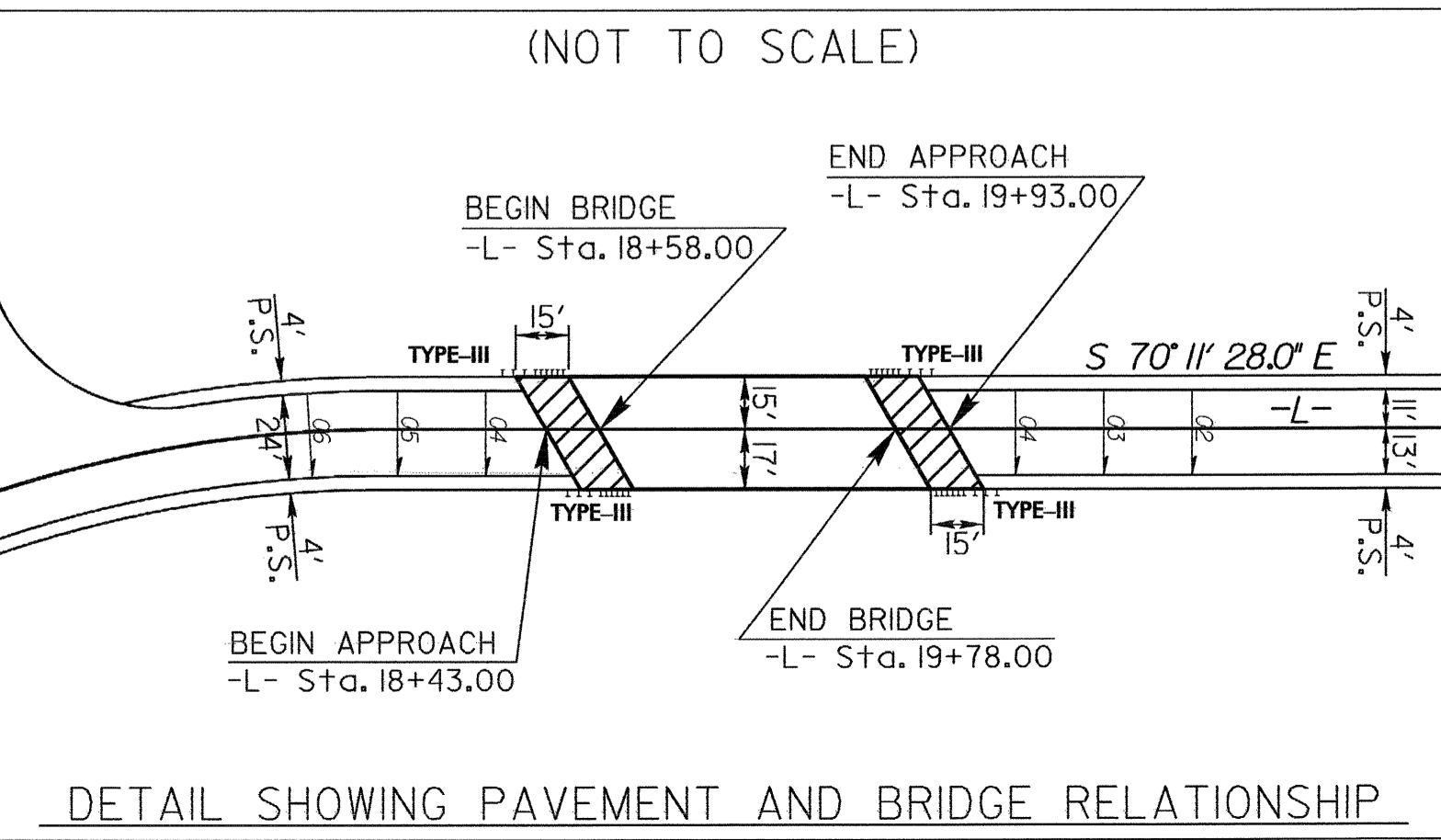


END TIP PROJECT B-4006
-L- POT Sta. 26+40.00

END CONSTRUCTION
-L- POT Sta. 26+60.00

END BRIDGE
-L- Sta. 19+78.00

END CONSTRUCTION
-DWI- POT Sta. 12+30.00



NOTE: SEE SHEET 5 FOR -L- PROFILE
SEE SHEET 6 FOR -Y-, -DWI- & -DW2- PROFILES

Q3:APR-2007 13:06
 d:\v\eu\tip\B-4006\B-4006.EC.dwg
 8/17/99
 03-APR-2007 13:06
 d:\v\eu\tip\B-4006\B-4006.EC.dwg
 8/17/99

BEGIN TIP PROJECT B-4006
-L- POC Sta. 12+00.00

BEGIN CONSTRUCTION
-L- POC Sta. 11+75.00

REVISIONS

