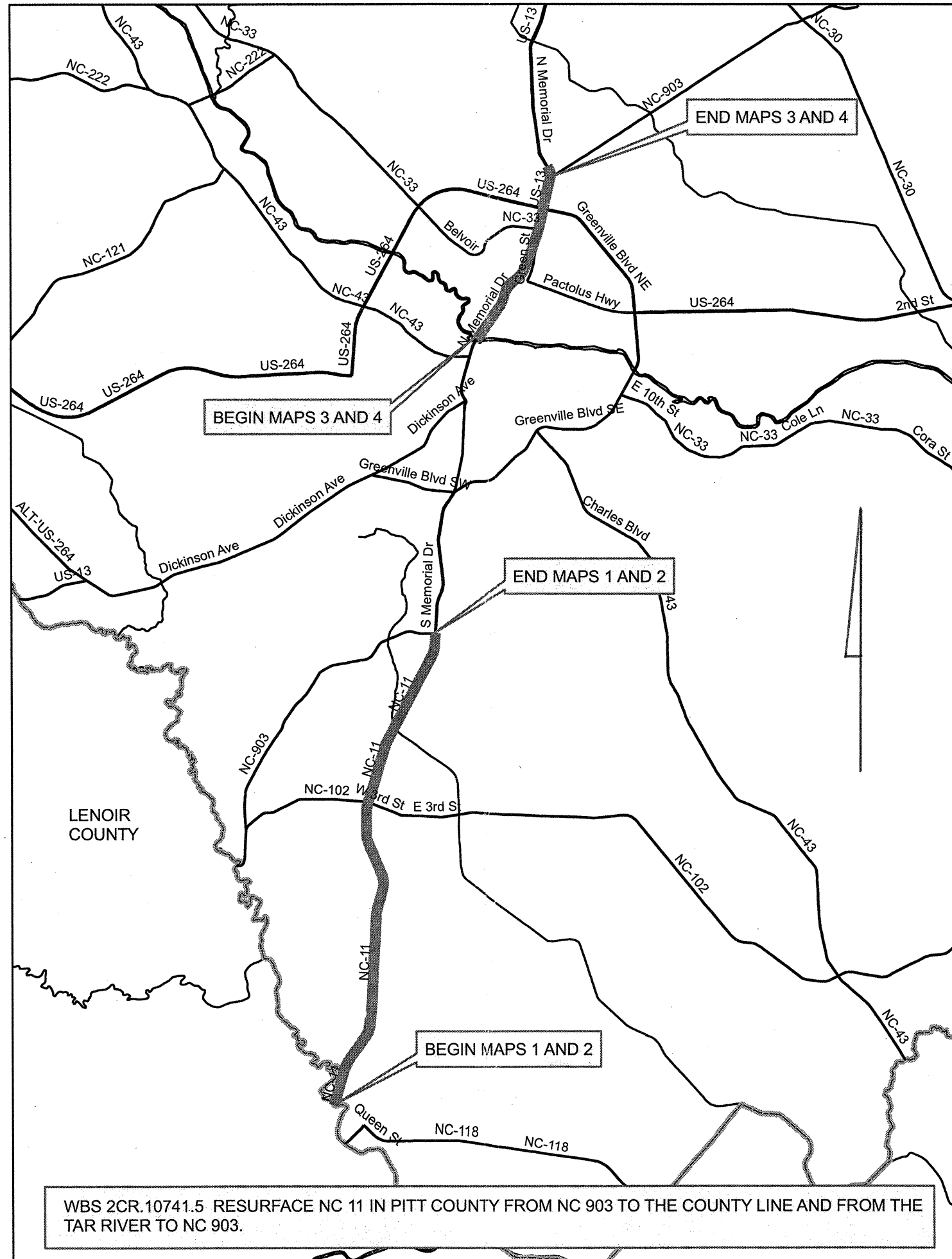


Sheet 1
2CR.10741.5
Pitt County

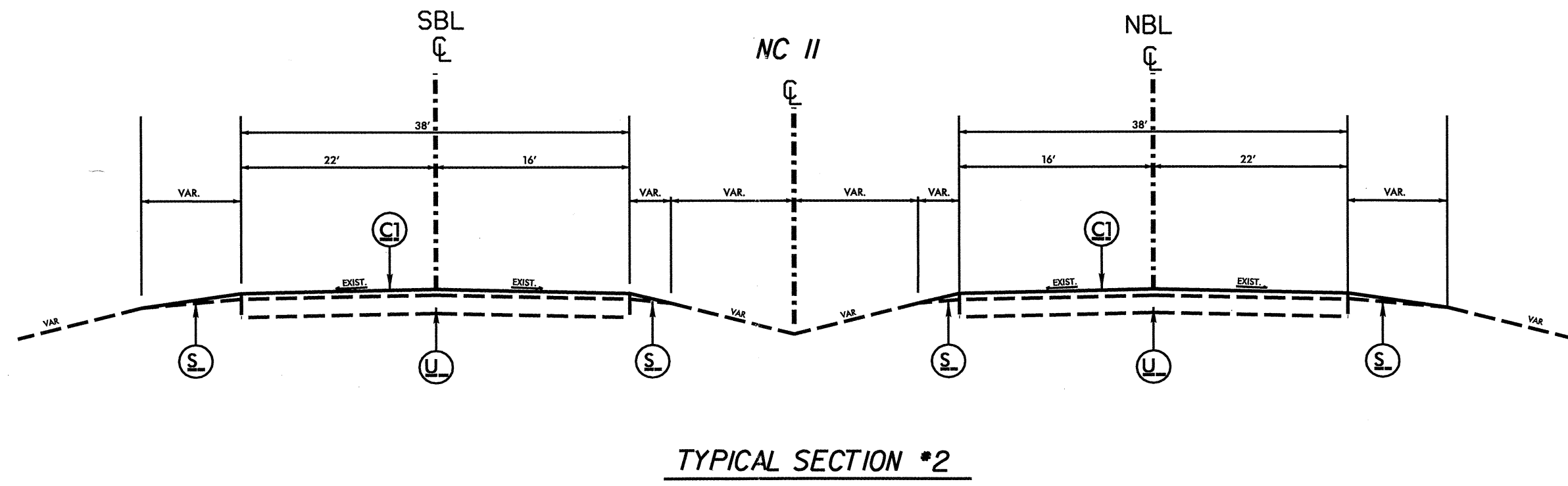
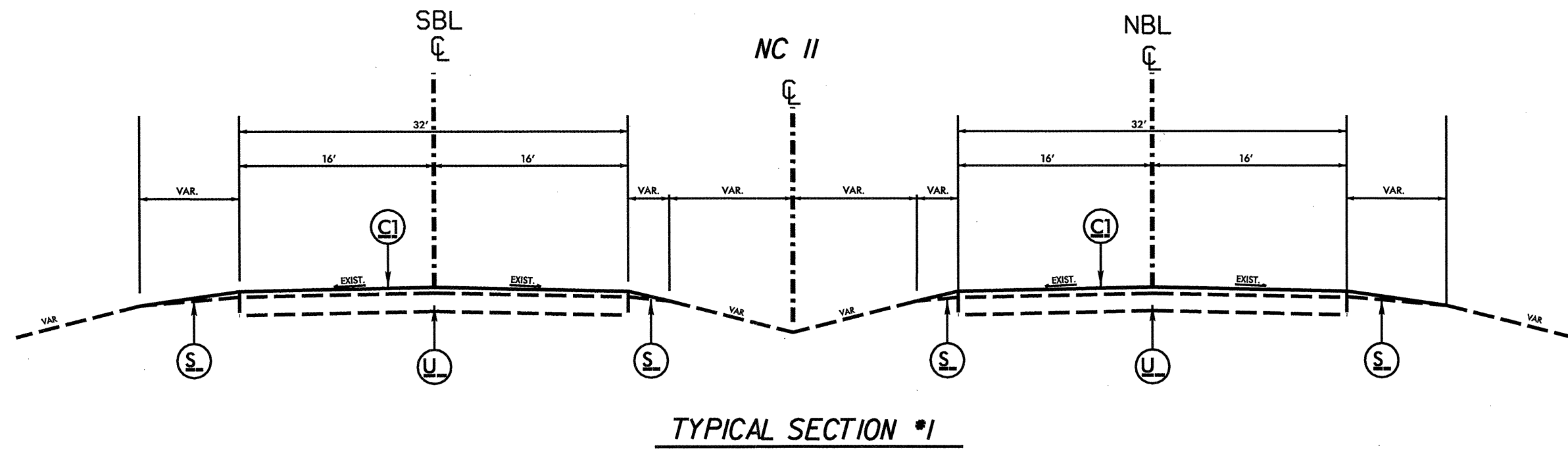


WBS 2CR.10741.5 RESURFACE NC 11 IN PITT COUNTY FROM NC 903 TO THE COUNTY LINE AND FROM THE TAR RIVER TO NC 903.

6/2/99

PROJECT REFERENCE NO.		SHEET NO.	
2CR.10741.5		2	
ROADWAY DESIGN ENGINEER		PAVEMENT DESIGN ENGINEER	

C1	PROP. APPROX. 3" ASPHALT CONCRETE SURFACE COURSE, TYPE S9.5C, AT AN AVERAGE RATE OF 168 LBS. PER SQ.YD. IN EACH OF TWO LAYERS.
S_	SHOULDER RECONSTRUCTION.
U_	EXISTING PAVEMENT.



PROJECT NO.	SHEET NO.	TOTAL NO.
2CR.10741.5	3	

SUMMARY OF QUANTITIES

PROJECT NO	COUNTY	MAP NO	ROUTE	DESCRIPTION	TYP NO	LENGTH MI	WIDTH FT	SHOULDER RECONSTRUCTION SMI	INCIDENTAL MILLING SY	SURFACE COURSE, S9.5C TONS	PG 70-22 PLANT MIX TONS	ADJ. OF MANHOLES EA	ADJ. OF METER OR VALVE BOX EA	SEEDING AND MULCHING ACRES
2CR.10741.5	Pitt	1	NC 11 SBL	FROM NC 903 TO CO. LINE	1	10.9	32	21.8		42863	2572	1	1	13.2
		2	NC 11 NBL	FROM CO. LINE TO NC 903	1	10.9	32	21.8		44249	2655	1	1	13.2
		3	NC 11 NBL	FROM THE TAR RIVER TO 903	2	4	38	8	7000	18096	1086	1	1	4.8
		4	NC 11 SBL	FROM 903 TO THE TAR RIVER	2	4	38	8	7000	18096	1086	1	1	4.8
TOTAL FOR PROJ NO. 2CR.10741.5						29.8		59.6	14000	123304	7399	4	4	36.0
GRAND TOTAL						29.8		59.6	14000	123304	7399	4	4	36

PROJECT NO.	SHEET NO.	TOTAL NO.
2CR.10741.5	4	

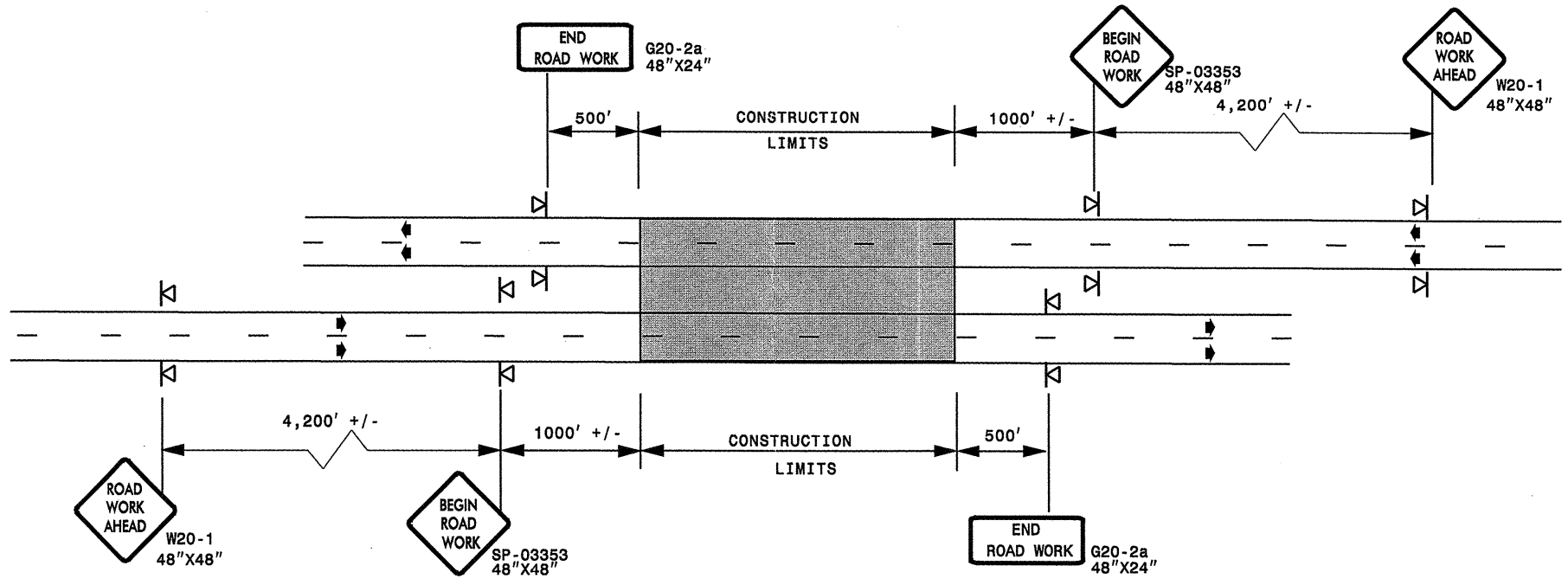
THERMOPLASTIC AND PAINT QUANTITIES

PROJECT NO	COUNTY	MAP NO	ROUTE	DESCRIPTION	4685000000-E		4686000000-E	4695000000-E	4710000000-E	4721000000-E		4725000000-E	4725000000-E	4725000000-E	4725000000-E
					4" X 90 M WHITE THERMO LF	4" X 90 M YELLOW THERMO LF	4" X 120 M WHITE THERMO LF	8" X 90 M WHITE THERMO LF	24" X 120 M WHITE THERMO LF	THERMO MSG SCHOOL 120 M EA	THERMO MSG ONLY 120 M EA	THERMO LT ARROW 90 M EA	THERMO RT ARROW 90 M EA	THERMO STR ARROW 90 M EA	THERMO STR & RT ARROW 90 M EA
2CR.10741.5	Pitt	1	NC 11 SBL	FROM NC 903 TO CO. LINE	59,732	57,552	14,388	200	1,100	12		31	17	8	
		2	NC 11 NBL	FROM CO. LINE TO NC 903	59,732	57,552	14,388	600	600	12		31	24	10	
		3	NC 11 NBL	FROM THE TAR RIVER TO 903	21,920	21,120	5,280	300	700	12	12	30	18	35	
		4	NC 11 SBL	FROM 903 TO THE TAR RIVER	21,920	21,120	5,280	300	500	6	4	26	18	29	2
TOTAL FOR PROJ NO. 2CR.10741.5					163,304	157,344	39,336	1,400	2,900	42	16	118	77	82	2
					320,648					58					
GRAND TOTAL					163,304	157,344	39,336	1,400	2,900	42	16	118	77	82	2
					320,648					58		279			

PROJECT NO	COUNTY	MAP NO	ROUTE	DESCRIPTION	4810000000-E		4820000000-E	4835000000-E	4840000000-E		4845000000-E			
					4" WHITE PAINT LF	4" YELLOW PAINT LF	8" WHITE PAINT LF	24" WHITE PAINT LF	PAINT PAVEMENT MSG SCHOOL EA	PAINT PAVEMENT MSG ONLY EA	PAINT LT ARROW EA	PAINT RT ARROW EA	PAINT STR ARROW EA	PAINT STR & RT ARROW EA
2CR.10741.5	Pitt	1	NC 11 SBL	FROM NC 903 TO CO. LINE	74,120	57,552	200	1,100	12		31	17	8	
		2	NC 11 NBL	FROM CO. LINE TO NC 903	74,120	57,552	600	600	12		31	24	10	
		3	NC 11 NBL	FROM THE TAR RIVER TO 903	27,200	21,120	300	700	12	12	30	18	35	
		4	NC 11 SBL	FROM 903 TO THE TAR RIVER	27,200	21,120	300	500	6	4	26	18	29	2
TOTAL FOR PROJ NO. 2CR.10741.5					202,640	157,344	1,400	2,900	42	16	118	77	82	2
					359,984									
GRAND TOTAL					202,640	157,344	1,400	2,900	42	16	118	77	82	2
					359,984				58		279			

ADVANCE WORK ZONE WARNING SIGNING FOR FREEWAYS (4 LANES OR GREATER)

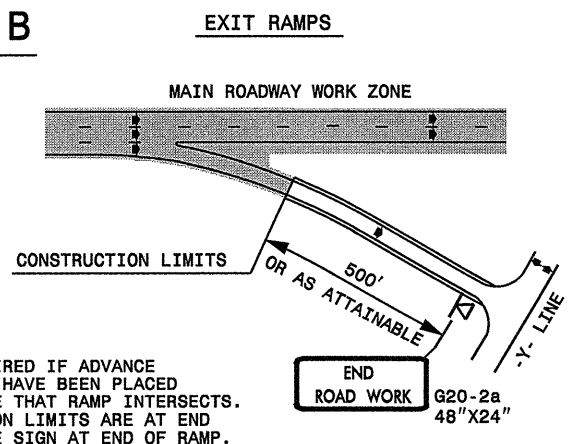
DETAIL A



STATE OF NORTH CAROLINA
 DEPT. OF TRANSPORTATION
 DIVISION OF HIGHWAYS
 RALEIGH, N.C.

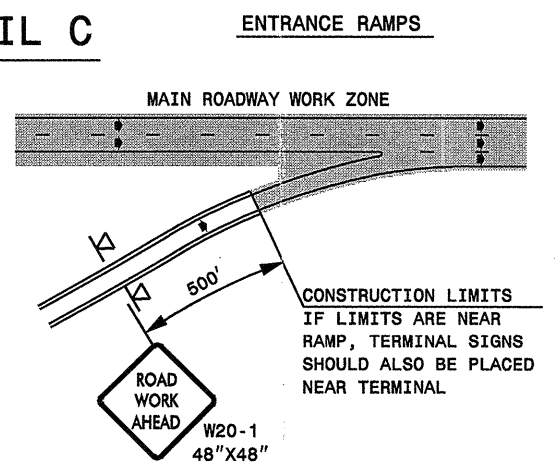
ROADWAYS INTERSECTING ALONG FREEWAY WORK ZONE (Y-LINES)

DETAIL B



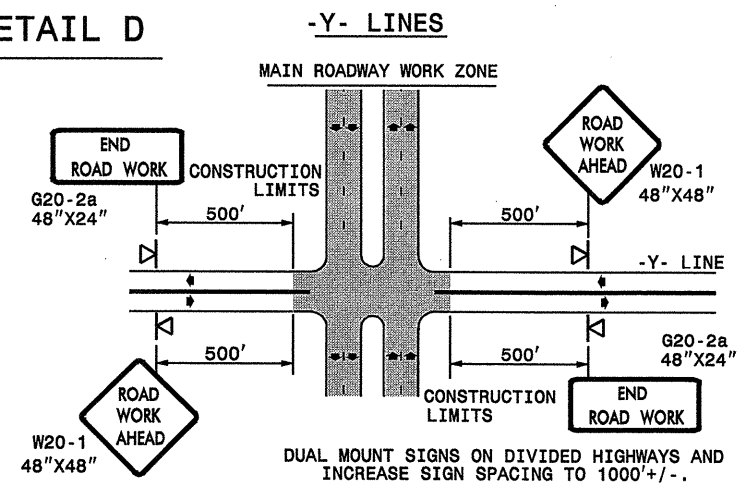
NOTE:
 SIGN NOT REQUIRED IF ADVANCE WARNING SIGNS HAVE BEEN PLACED ALONG -Y- LINE THAT RAMP INTERSECTS. IF CONSTRUCTION LIMITS ARE AT END OF RAMP, PLACE SIGN AT END OF RAMP.

DETAIL C



CONSTRUCTION LIMITS IF LIMITS ARE NEAR RAMP, TERMINAL SIGNS SHOULD ALSO BE PLACED NEAR TERMINAL.

DETAIL D



DUAL MOUNT SIGNS ON DIVIDED HIGHWAYS AND INCREASE SIGN SPACING TO 1000' +/-.

GENERAL NOTES

- USE FLUORESCENT ORANGE SHEETING (TYPE VII OR HIGHER) ON ALL ADVANCE WORK ZONE SIGNS.
- DO NOT INSTALL ADVANCE WARNING SIGNS MORE THAN 3 DAYS PRIOR TO BEGINNING OF WORK.
- ALL SIGN SPACING DIMENSIONS ARE APPROXIMATE, FIELD ADJUST AS NECESSARY OR AS DIRECTED.
- USE PORTABLE WORK ZONE SIGNS ONLY WITH PORTABLE WORK ZONE SIGN STANDS SPECIFICALLY DESIGNED FOR ONE ANOTHER. PORTABLE WORK ZONE SIGNS MAY BE ROLL UP OR APPROVED COMPOSITE.
- PROVIDE PORTABLE WORK ZONE SIGN STANDS, PORTABLE SIGNS AND SIGN SHEETING WHICH ARE LISTED ON THE NORTH CAROLINA DEPARTMENT OF TRANSPORTATION'S APPROVED PRODUCT LIST OR ACCEPTED AS TRAFFIC QUALIFIED BY THE TRAFFIC CONTROL UNIT.
- ** TWO-WAY UNDIVIDED ADVANCE WARNING SIGN CONFIGURATION MAY BE USED ON MULTI-LANE FACILITIES WHERE CONDITIONS LIMIT THE USE OF DUAL MOUNTED SIGNS AS DETERMINED BY THE ENGINEER.

LEGEND

◀ PORTABLE SIGN

➔ DIRECTION OF TRAFFIC FLOW

**DETAIL DRAWING
 FOR FREEWAYS
 WORK ZONE WARNING SIGNS
 (SHORT-DURATION LANE CLOSURES)**

APPROVED: _____	DATE: _____	DETAIL DRAWING FOR FREEWAYS WORK ZONE WARNING SIGNS	
SEAL	SCALE: NONE		REVISIONS
	DATE: _____		7-98 10/01
	DWG. BY: _____		10-98 03/04
	DESIGN BY: _____		01/01 11/04
REVIEWED BY: _____	_____	_____	_____

16-AUG-2007 15:34 \\001\dfsroot\groups\wztc\design\group4\resur\fac\2007\div02\201880_2cr107415.plt\1.nc1\2cr107415\free4lanesgreat\july2006.dgn pseymore AT WZTC206427

