

STATE	STATE PROJECT REFERENCE NO.	SHEET NO.	TOTAL SHEETS
N.C.	R-4071	EC-1	
STATE PROJ. NO.	F.A. PROJ. NO.	DESCRIPTION	

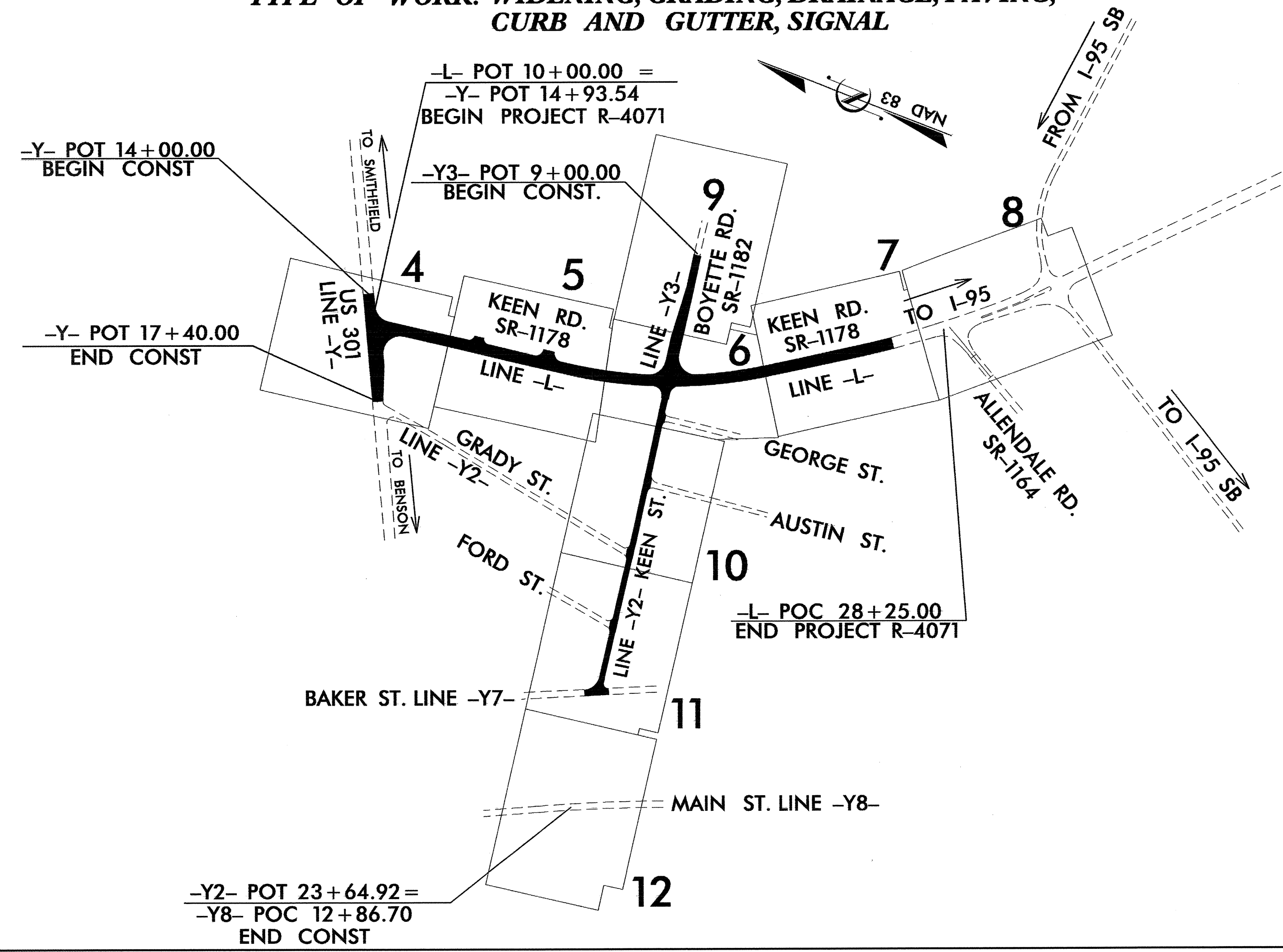
STATE OF NORTH CAROLINA
DIVISION OF HIGHWAYS

PLAN FOR PROPOSED
HIGHWAY EROSION CONTROL

JOHNSTON COUNTY

LOCATION: SR 1178 (KEEN ROAD) FROM US-301 TO SR 1164 (ALLENDALE ROAD).

TYPE OF WORK: WIDENING, GRADING, DRAINAGE, PAVING, CURB AND GUTTER, SIGNAL



EROSION AND SEDIMENT CONTROL MEASURES

Std. #	Description	Symbol
	Streambank Reforestation	
1630.03	Temporary Silt Ditch	
1630.05	Temporary Diversion	
1605.01	Temporary Silt Fence	
1606.01	Special Sediment Control Fence	
1622.01	Temporary Berms and Slope Drains	
1630.01	Riser Basin	
1630.02	Silt Basin Type B	
1633.01	Temporary Rock Silt Check Type-A	
	Temporary Rock Silt Check Type-B	
1634.01	Temporary Rock Sediment Dam Type-A	
1634.02	Temporary Rock Sediment Dam Type-B	
1635.01	Rock Pipe Inlet Sediment Trap Type-A	
1635.02	Rock Pipe Inlet Sediment Trap Type-B	
1630.04	Stilling Basin	
	Rock Inlet Sediment Trap:	
1632.01	Type A	
1632.02	Type B	
1632.03	Type C	
	Skimmer Basin	
	Tiered Skimmer Basin	

THIS PROJECT CONTAINS EROSION CONTROL PLANS FOR CLEARING AND GRUBBING PHASE OF CONSTRUCTION.

THIS PROJECT HAS BEEN DESIGNED TO SENSITIVE WATERSHED STANDARDS.

ENVIRONMENTALLY SENSITIVE AREA(S) EXIST ON THIS PROJECT
Refer To E. C. Special Provisions for Special Considerations.

TIP PROJECT: R-4071

GRAPHIC SCALE

0

PLANS

0

PROFILE (HORIZONTAL)

0

PROFILE (VERTICAL)

ROADSIDE ENVIRONMENTAL UNIT
DIVISION OF HIGHWAYS
STATE OF NORTH CAROLINA

Prepared In the Office of:
ROADSIDE ENVIRONMENTAL UNIT
1 South Wilmington St.
Raleigh, NC 27611

2006 STANDARD SPECIFICATIONS

Roadway Standard Drawings

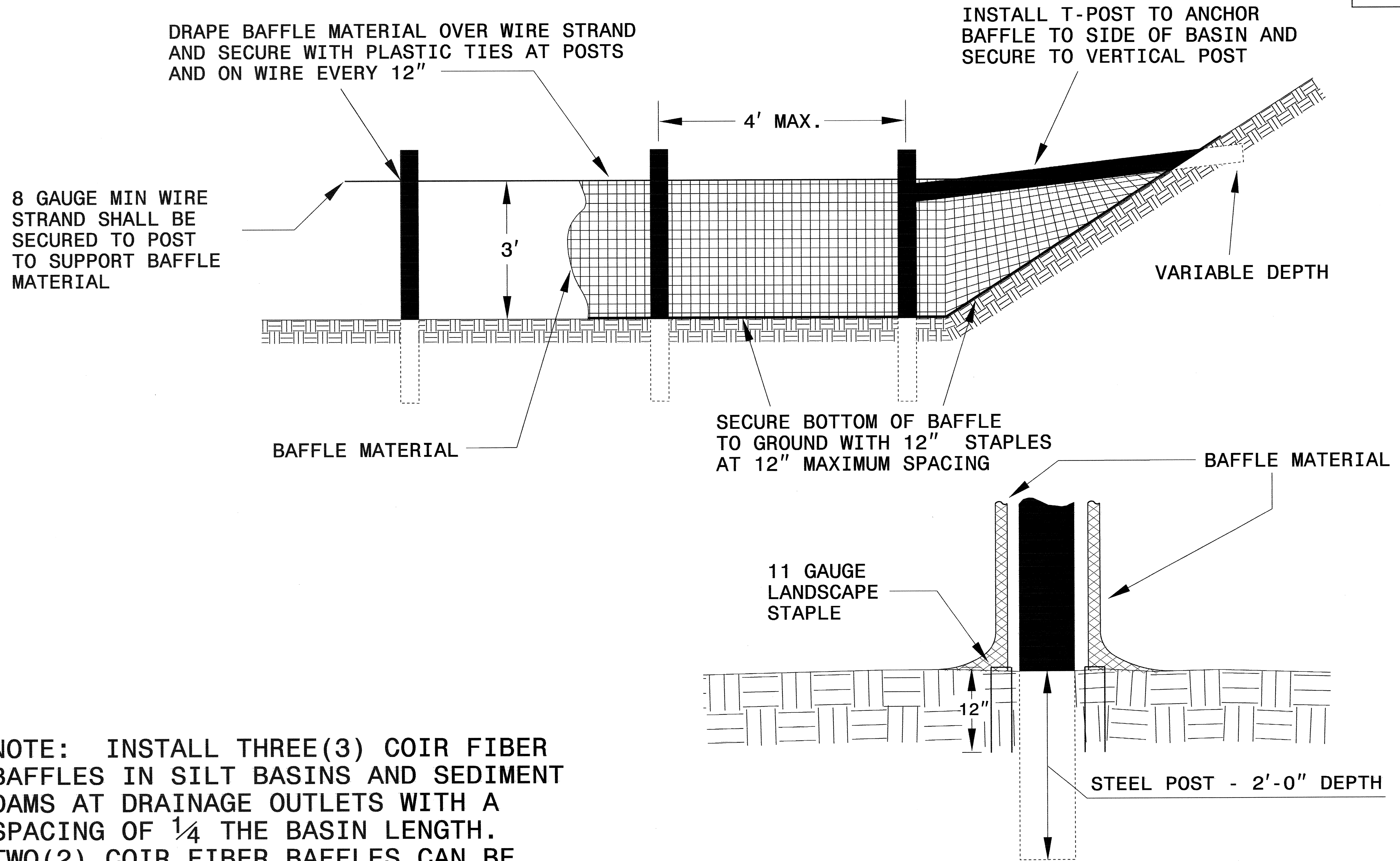
The following roadway english standards as appear in "Roadway Standard Drawings"- Roadway Design Unit - N. C. Department of Transportation - Raleigh, N. C., dated July 18, 2006 and the latest revision thereto are applicable to this project and by reference hereby are considered a part of these plans.

1605.01 Temporary Silt Fence	1630.06 Special Stilling Basin
1607.01 Gravel Construction Entrance	1632.02 Rock Inlet Sediment Trap Type B
1622.01 Temporary Berms and Slope Drains	1633.01 Temporary Rock Silt Check Type A
1630.02 Silt Basin Type B	1634.02 Temporary Rock Sediment Dam Type B
1630.05 Temporary Diversion	1635.02 Rock Pipe Inlet Sediment Trap Type B

08-MAY-2007 09:56
ch\y\p\2007\4971\ddc4.tah.dgn
nchen AT REV2382

PROJECT REFERENCE NO. R-4071	SHEET NO. EC-2
RW SHEET NO.	
ROADWAY DESIGN ENGINEER	HYDRAULICS ENGINEER

COIR FIBER BAFFLE DETAIL

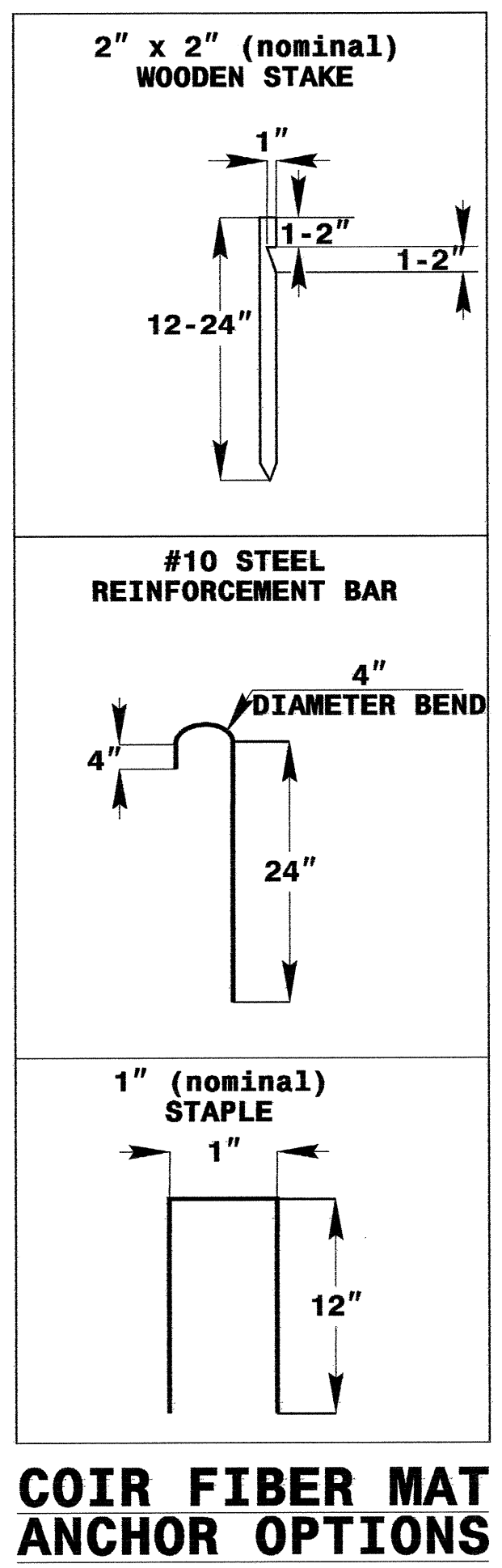
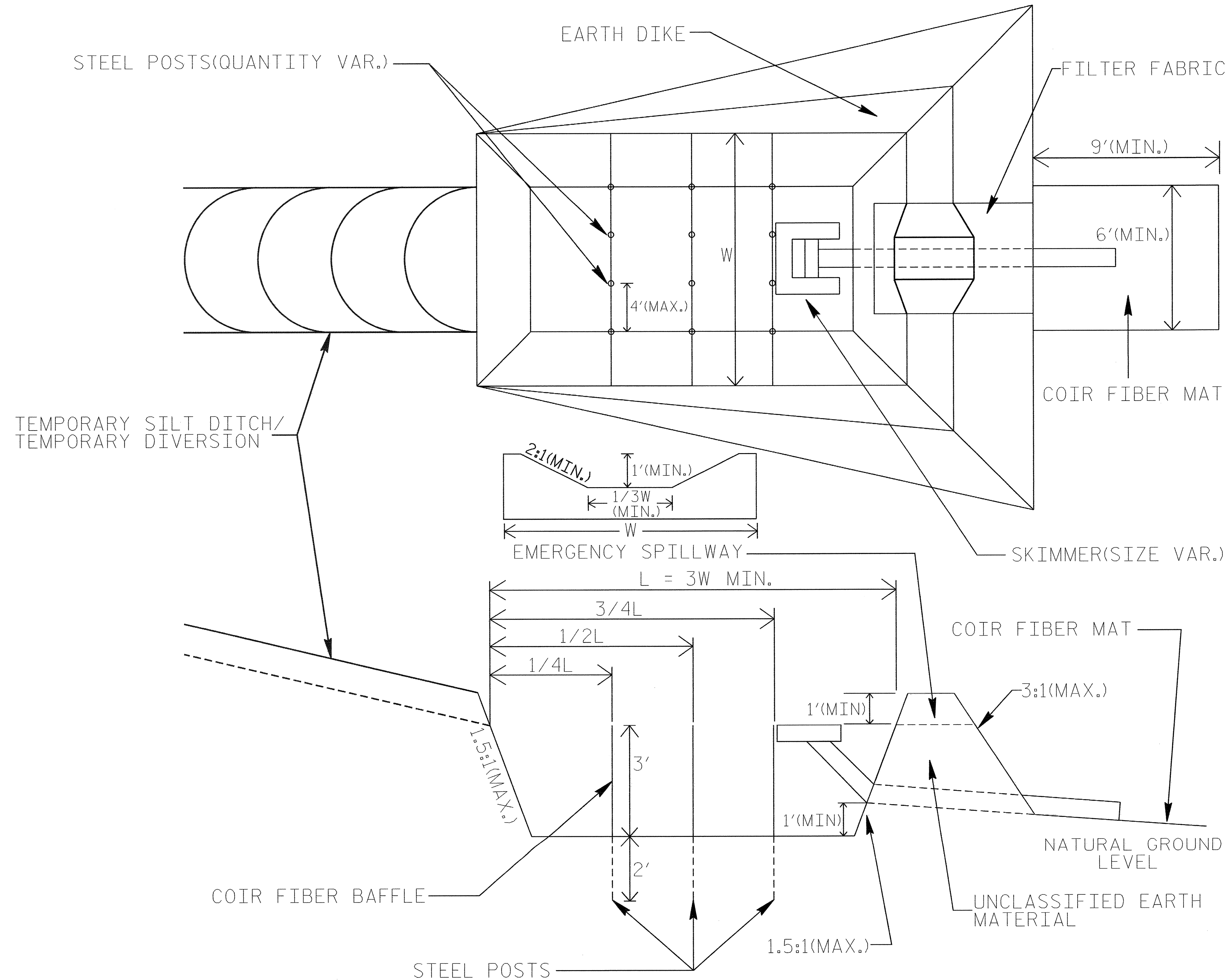


NOTE: INSTALL THREE(3) COIR FIBER BAFFLES IN SILT BASINS AND SEDIMENT DAMS AT DRAINAGE OUTLETS WITH A SPACING OF $\frac{1}{4}$ THE BASIN LENGTH. TWO(2) COIR FIBER BAFFLES CAN BE INSTALLED IN SILT BASINS AND DAMS LESS THAN 20 FT. IN LENGTH WITH A SPACING OF $\frac{1}{3}$ THE BASIN LENGTH.

BAFFLE MATERIAL SHALL BE SECURED TO THE BOTTOM AND SIDES OF BASIN USING 12" LANDSCAPE STAPLES

SKIMMER BASIN WITH BAFFLES DETAIL

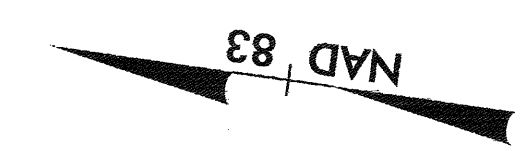
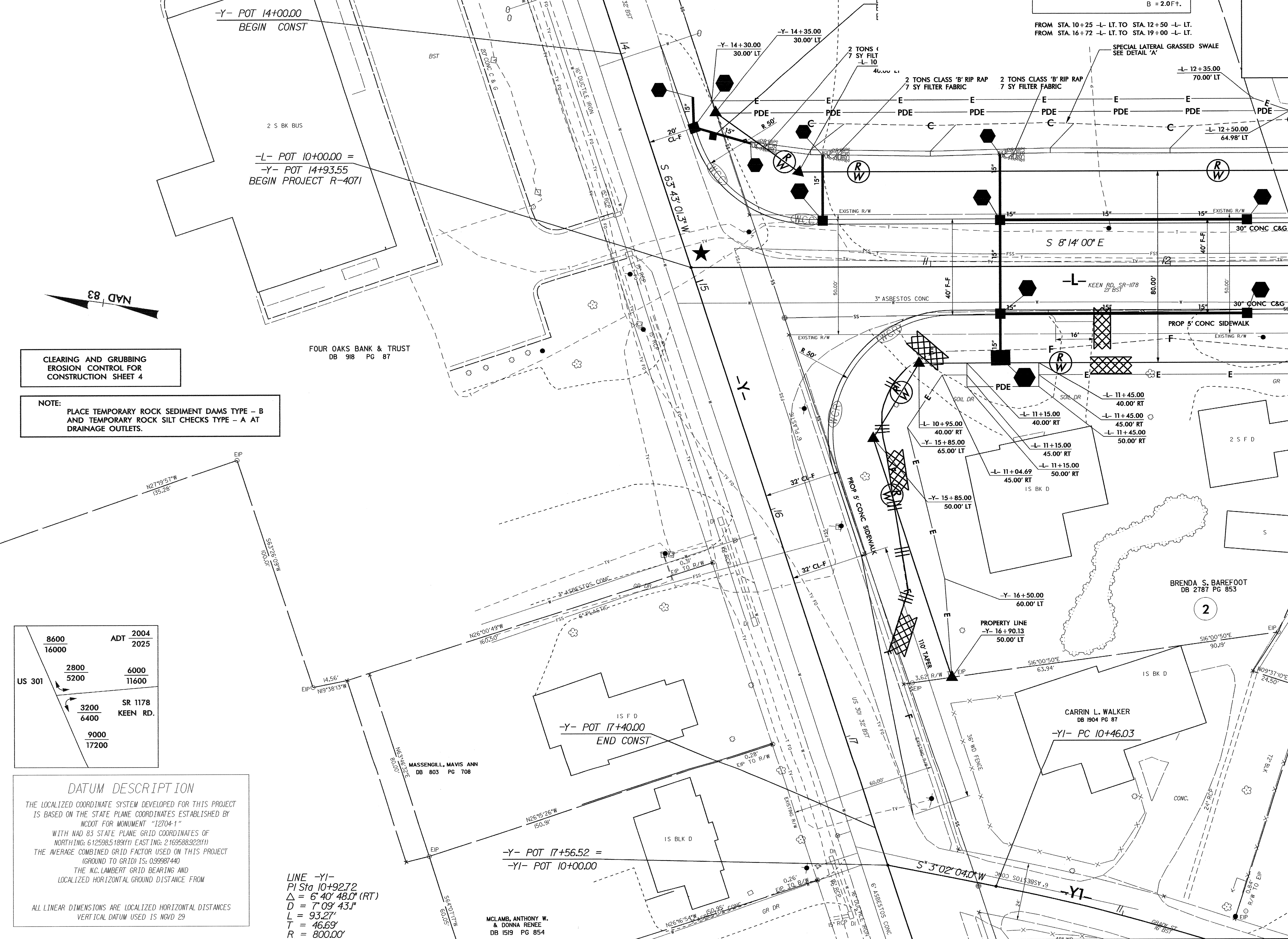
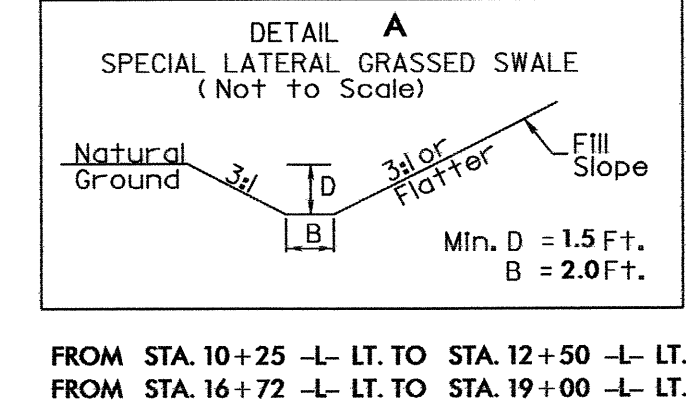
PROJECT REFERENCE NO. R-4071	SHEET NO. EC-2A
RW SHEET NO.	
ROADWAY DESIGN ENGINEER	HYDRAULICS ENGINEER



HP 4500

★ EXISTING SIGNAL TO BE UPGRADED
 FOR -L- PROFILE, SEE SHEET NO. 13
 FOR -Y- PROFILE, SEE SHEET NO. 15

PROJECT REFERENCE NO. R-4071	SHEET NO. EC-4/CONST.4
RW SHEET NO. ROADWAY DESIGN ENGINEER	HYDRAULICS ENGINEER



CLEARING AND GRUBBING
 EROSION CONTROL FOR
 CONSTRUCTION SHEET 4

NOTE:
 PLACE TEMPORARY ROCK SEDIMENT DAMS TYPE - B
 AND TEMPORARY ROCK SILT CHECKS TYPE - A AT
 DRAINAGE OUTLETS.

8600	ADT 2004
16000	2025
2800	6000
5200	11600
3200	SR 1178
6400	KEEN RD.
9000	
17200	

DATUM DESCRIPTION
 THE LOCALIZED COORDINATE SYSTEM DEVELOPED FOR THIS PROJECT IS BASED ON THE STATE PLANE COORDINATES ESTABLISHED BY NCDOT FOR MONUMENT "12704-1" WITH NAD 83 STATE PLANE GRID COORDINATES OF NORTHING: 612598.5183(1) EASTING: 2169588.922(1) THE AVERAGE COMBINED GRID FACTOR USED ON THIS PROJECT (GROUND TO GRID) IS: 0.99987440 THE N.C. LAMBERT GRID BEARING AND LOCALIZED HORIZONTAL GROUND DISTANCE FROM ALL LINEAR DIMENSIONS ARE LOCALIZED HORIZONTAL DISTANCES VERTICAL DATUM USED IS NGVD 29

LINE -Y1-
 PI Sta 10+92.72
 $\Delta = 6^\circ 40' 48.0''$ (RT)
 $D = 7^\circ 09' 43.1''$
 $L = 93.27'$
 $T = 46.69'$
 $R = 800.00'$

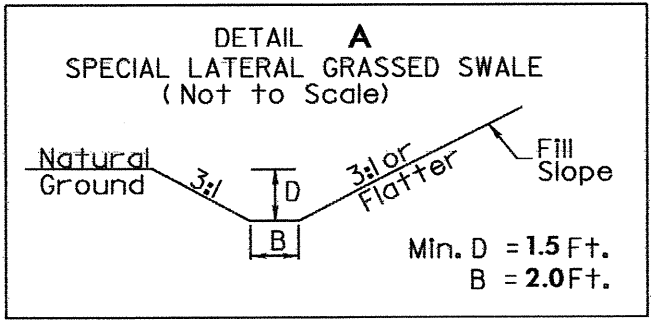
MCLAMB, ANTHONY W.
 & DONNA RENEE
 DB 1519 PG 854

08-MAY-2007 10:19
 d:\yu\p-4071\4071.dwg4_psh_04_20.dgn
 nchen AT REN231812

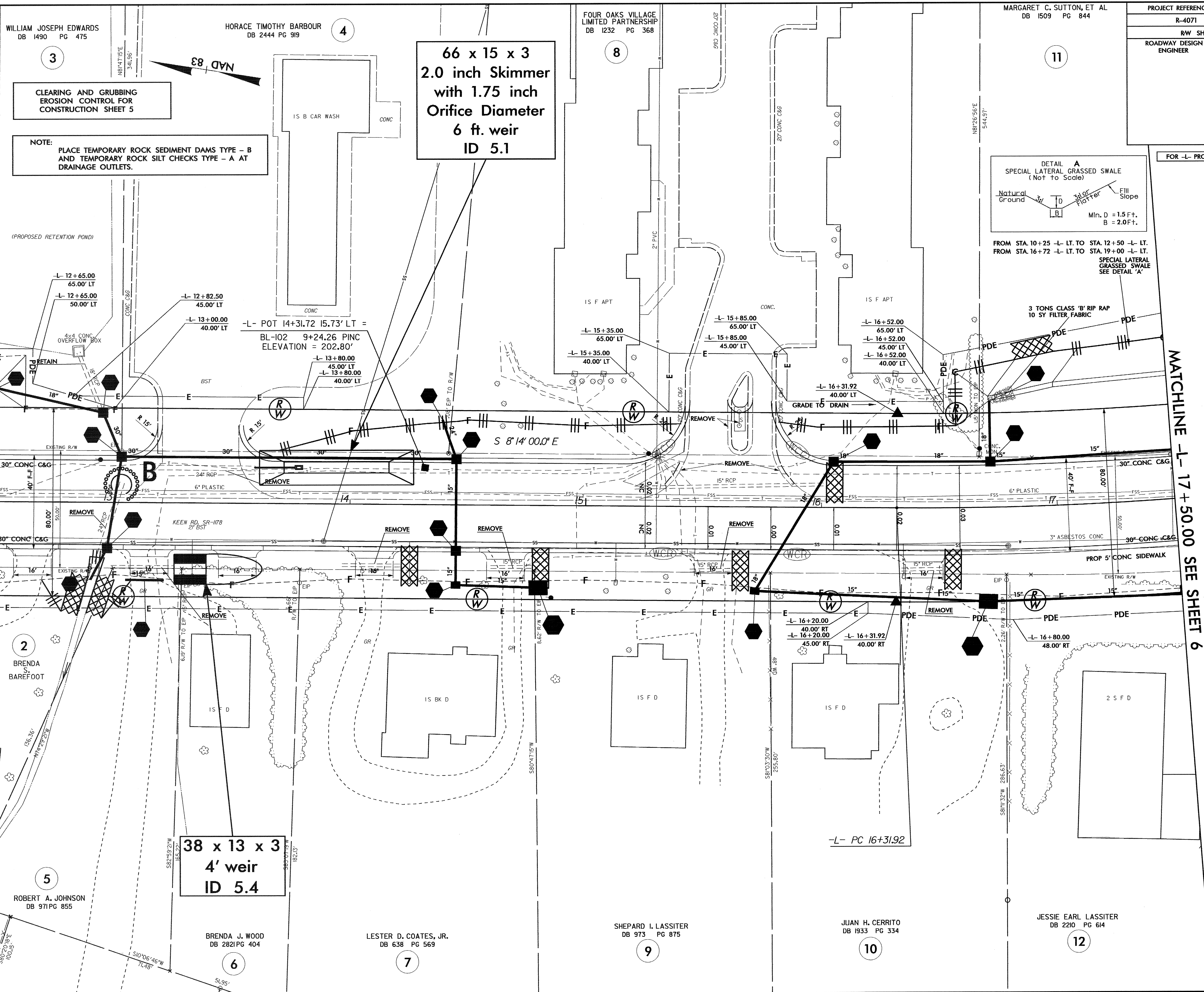
MATCHLINE -L- 12+50.00 SEE SHEET 5

PROJECT REFERENCE NO. R-4071	SHEET NO. EC-5/CONST.5
R/W SHEET NO. ROADWAY DESIGN ENGINEER	HYDRAULICS ENGINEER

FOR -L- PROFILE SEE SHEET NO. 13



FROM STA. 10+25 -L- LT. TO STA. 12+50 -L- LT.
FROM STA. 16+72 -L- LT. TO STA. 19+00 -L- LT.
SPECIAL LATERAL GRASSED SWALE
SEE DETAIL 'A'



MATCHLINE -L- 12+50.00 SEE SHEET 4

MATCHLINE -L- 17+50.00 SEE SHEET 6

WILLIAM JOSEPH EDWARDS
DB 1490 PG 475

HORACE TIMOTHY BARBOUR
DB 2444 PG 919

FOUR OAKS VILLAGE LIMITED PARTNERSHIP
DB 1232 PG 368

MARGARET C. SUTTON, ET AL
DB 1509 PG 844

CLEARING AND GRUBBING
EROSION CONTROL FOR
CONSTRUCTION SHEET 5

NOTE:
PLACE TEMPORARY ROCK SEDIMENT DAMS TYPE - B
AND TEMPORARY ROCK SILT CHECKS TYPE - A AT
DRAINAGE OUTLETS.

66 x 15 x 3
2.0 inch Skimmer
with 1.75 inch
Orifice Diameter
6 ft. weir
ID 5.1

38 x 13 x 3
4' weir
ID 5.4

ROBERT A. JOHNSON
DB 971 PG 855

BRENDA J. WOOD
DB 2821 PG 404

LESTER D. COATES, JR.
DB 638 PG 569

SHEPARD I. LASSITER
DB 973 PG 875

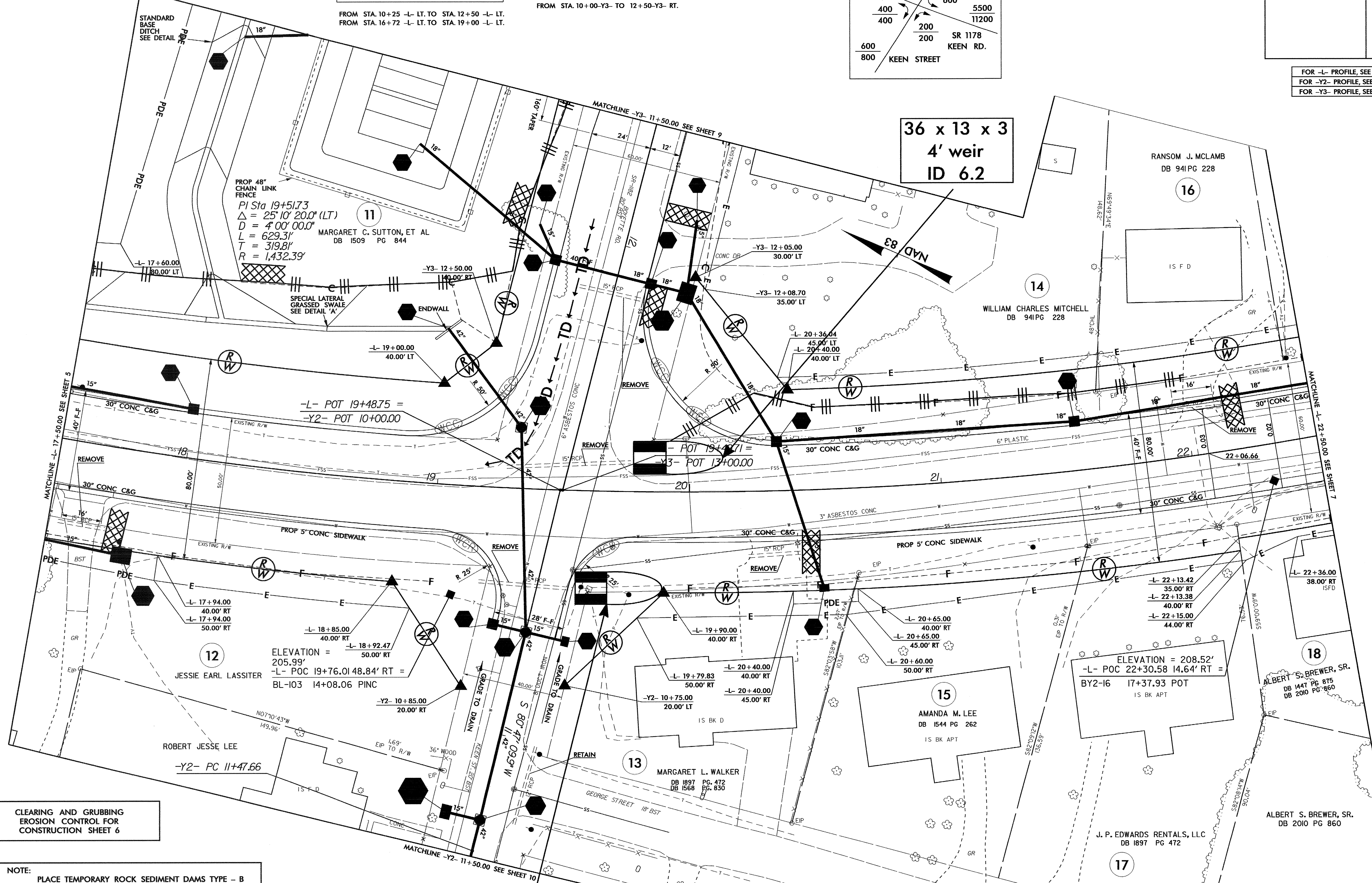
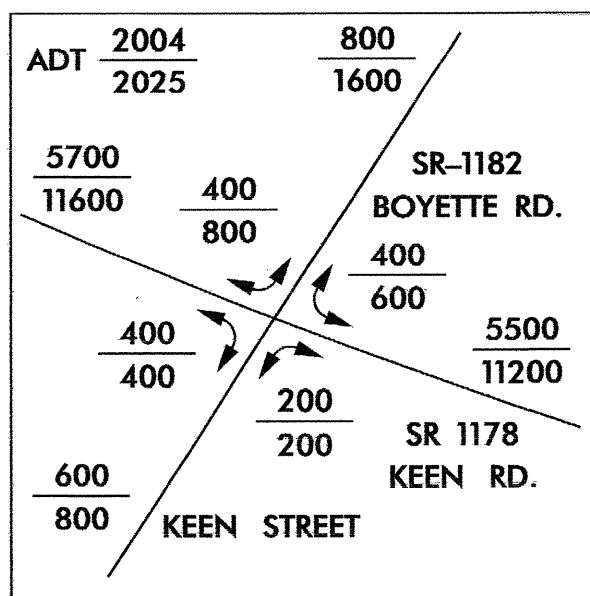
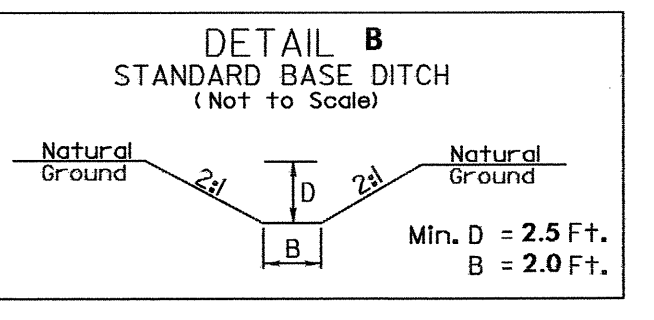
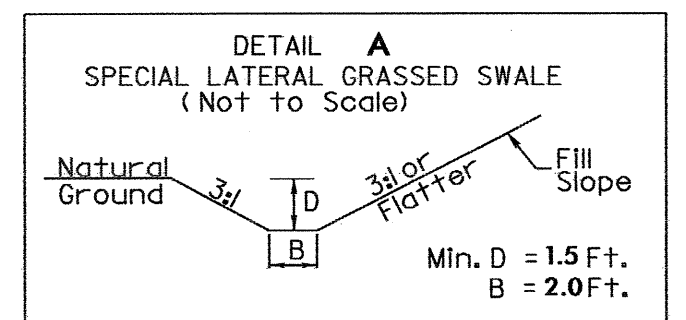
JUAN H. CERRITO
DB 1933 PG 334

JESSIE EARL LASSITER
DB 2210 PG 614

08-MAY-2007 10:21
d:\p01\14071\14071.dwg
AT REN231812

PROJECT REFERENCE NO.	SHEET NO.
R-4071	EC-6/CONST.6
RW SHEET NO.	
ROADWAY DESIGN ENGINEER	HYDRAULICS ENGINEER

FOR -L- PROFILE, SEE SHEET NO. 14
 FOR -Y2- PROFILE, SEE SHEET NO. 16
 FOR -Y3- PROFILE, SEE SHEET NO. 15



CLEARING AND GRUBBING
 EROSION CONTROL FOR
 CONSTRUCTION SHEET 6

NOTE:
 PLACE TEMPORARY ROCK SEDIMENT DAMS TYPE - B
 AND TEMPORARY ROCK SILT CHECKS TYPE - A AT
 DRAINAGE OUTLETS.

35 x 13 x 3
 4' weir
 ID 6.9

08-MAY-2007 11:25
 d:\reu\p-4071\4071_dcc4_psh_06_20.dgn
 reu
 AT REN231812

PROJECT REFERENCE NO. R-4071	SHEET NO. EC-7/CONST.7
RW SHEET NO.	
ROADWAY DESIGN ENGINEER	HYDRAULICS ENGINEER

CLEARING AND GRUBBING
EROSION CONTROL FOR
CONSTRUCTION SHEET 7

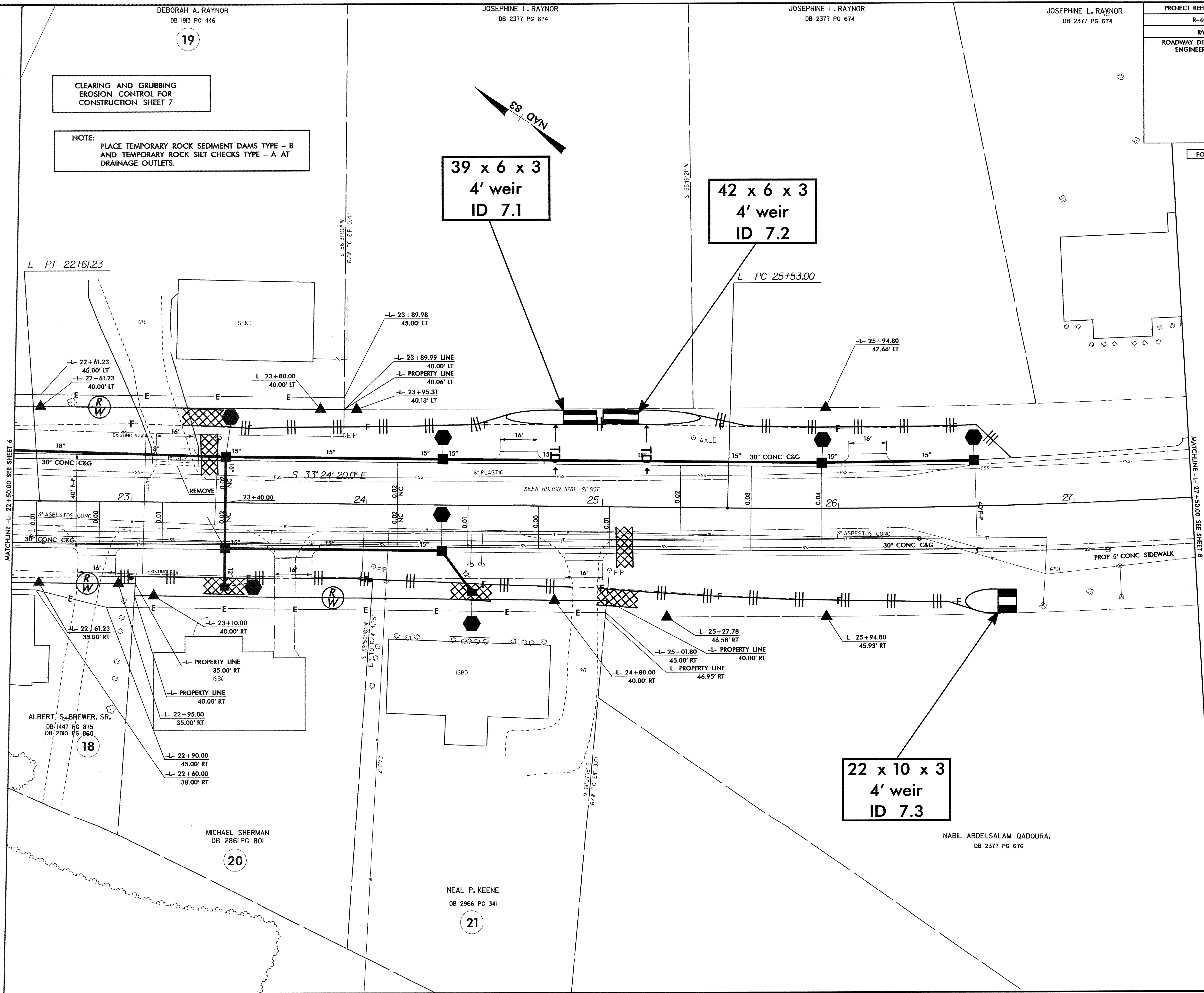
NOTE:
PLACE TEMPORARY ROCK SEDIMENT DAMS TYPE - B
AND TEMPORARY ROCK SILT CHECKS TYPE - A AT
DRAINAGE OUTLETS.

39 x 6 x 3
4' weir
ID 7.1

42 x 6 x 3
4' weir
ID 7.2

22 x 10 x 3
4' weir
ID 7.3

FOR -L- PROFILE, SEE SHEET NO. 14



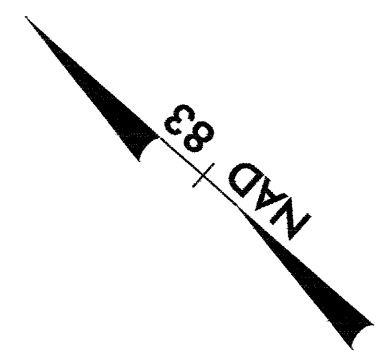
08-MAY-2007 11:27
d:\rev\1-4071\4071_dcd4_psh_07_20.dgn
nchan AT REN231812

HP4500

PROJECT REFERENCE NO. R-4071	SHEET NO. EC-8/CONST.8
RW SHEET NO.	
ROADWAY DESIGN ENGINEER	HYDRAULICS ENGINEER

CHARLES EDWARD UPCHURCH
DB 858 PG 8

EDNA S. KEENE
DB 1089 PG. 165



-L- POC 28+25.00
END PROJECT R-4071

PI Sta 28+91.67
Δ = 13° 05' 10.0" (LT)
D = 1' 56' 25.5"
L = 674.40'
T = 338.67'
R = 2,952.75'

-L- PT 32+27.39

MATCHLINE -L- 27+50.00 SEE SHEET 7

PROP 5' CONC SIDEWALK

CLEARING AND GRUBBING
EROSION CONTROL FOR
CONSTRUCTION SHEET 8

NOTE:
PLACE TEMPORARY ROCK SEDIMENT DAMS TYPE - B
AND TEMPORARY ROCK SILT CHECKS TYPE - A AT
DRAINAGE OUTLETS.

HTR

HTR

PEGGY HOCKADAY
DB 569 PG. 601
PB 41 PG. 103

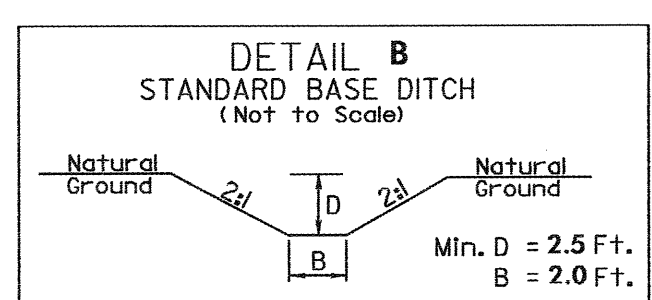
08-MAY-2007 11:53
d:\yau\1-4071\4071_dcd4_psh_08_20.dgn
nchen AT RENZI31812

HP 4500

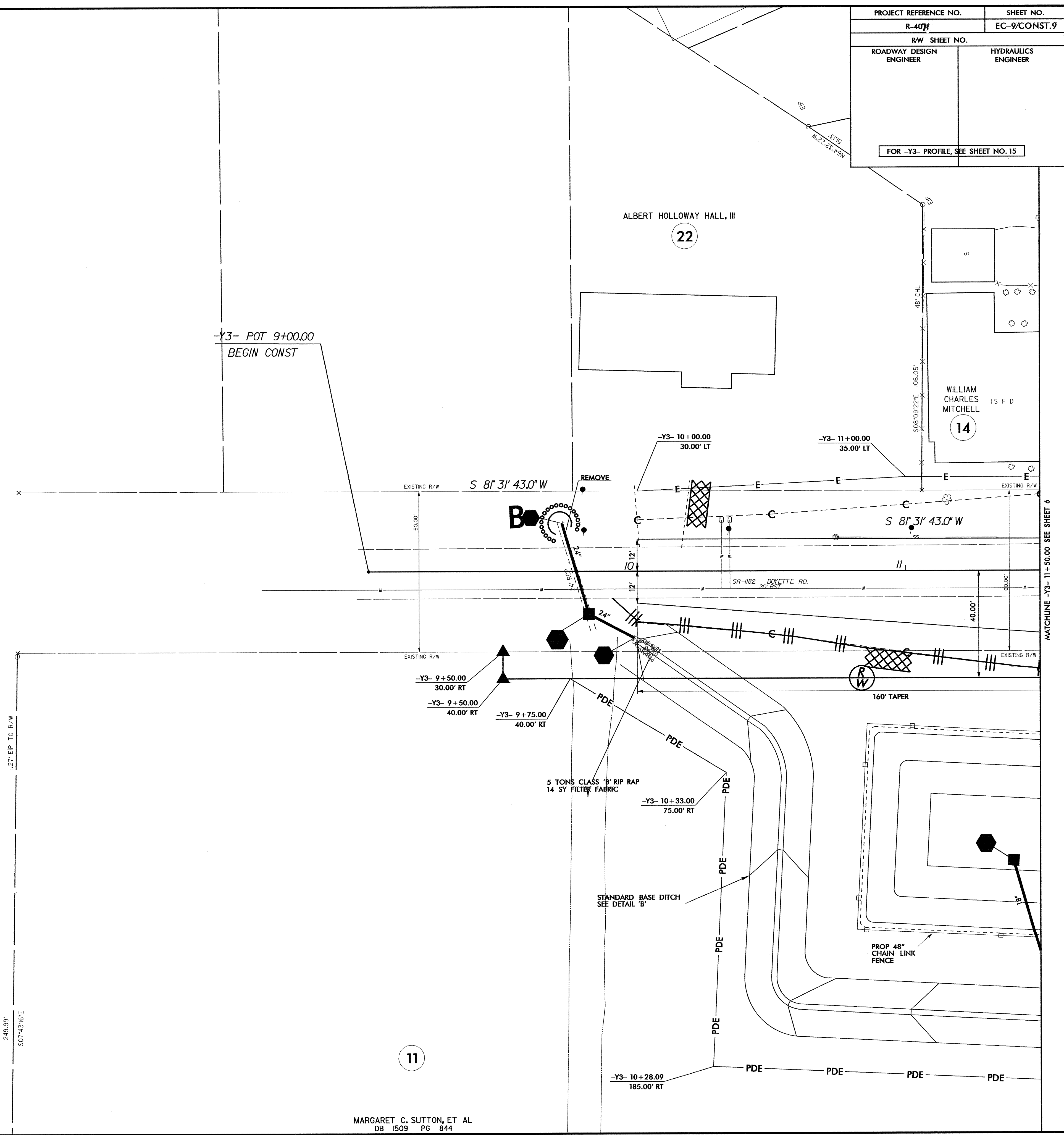
PROJECT REFERENCE NO.		SHEET NO.	
R-4071		EC-9/CONST.9	
RW SHEET NO.			
ROADWAY DESIGN ENGINEER		HYDRAULICS ENGINEER	
FOR -Y3- PROFILE, SEE SHEET NO. 15			

CLEARING AND GRUBBING
EROSION CONTROL FOR
CONSTRUCTION SHEET 9

NOTE:
PLACE TEMPORARY ROCK SEDIMENT DAMS TYPE - B
AND TEMPORARY ROCK SILT CHECKS TYPE - A AT
DRAINAGE OUTLETS.



FROM STA. 10+00-Y3- TO 12+50-Y3- RT.



08-MAY-2007 11:53
d:\rev\14071\4071_ddec4_psh_09_20.dgn
ncton AT RENY231812

PROJECT REFERENCE NO. R-4071	SHEET NO. EC-10/CONST.10
RW SHEET NO.	
ROADWAY DESIGN ENGINEER	HYDRAULICS ENGINEER

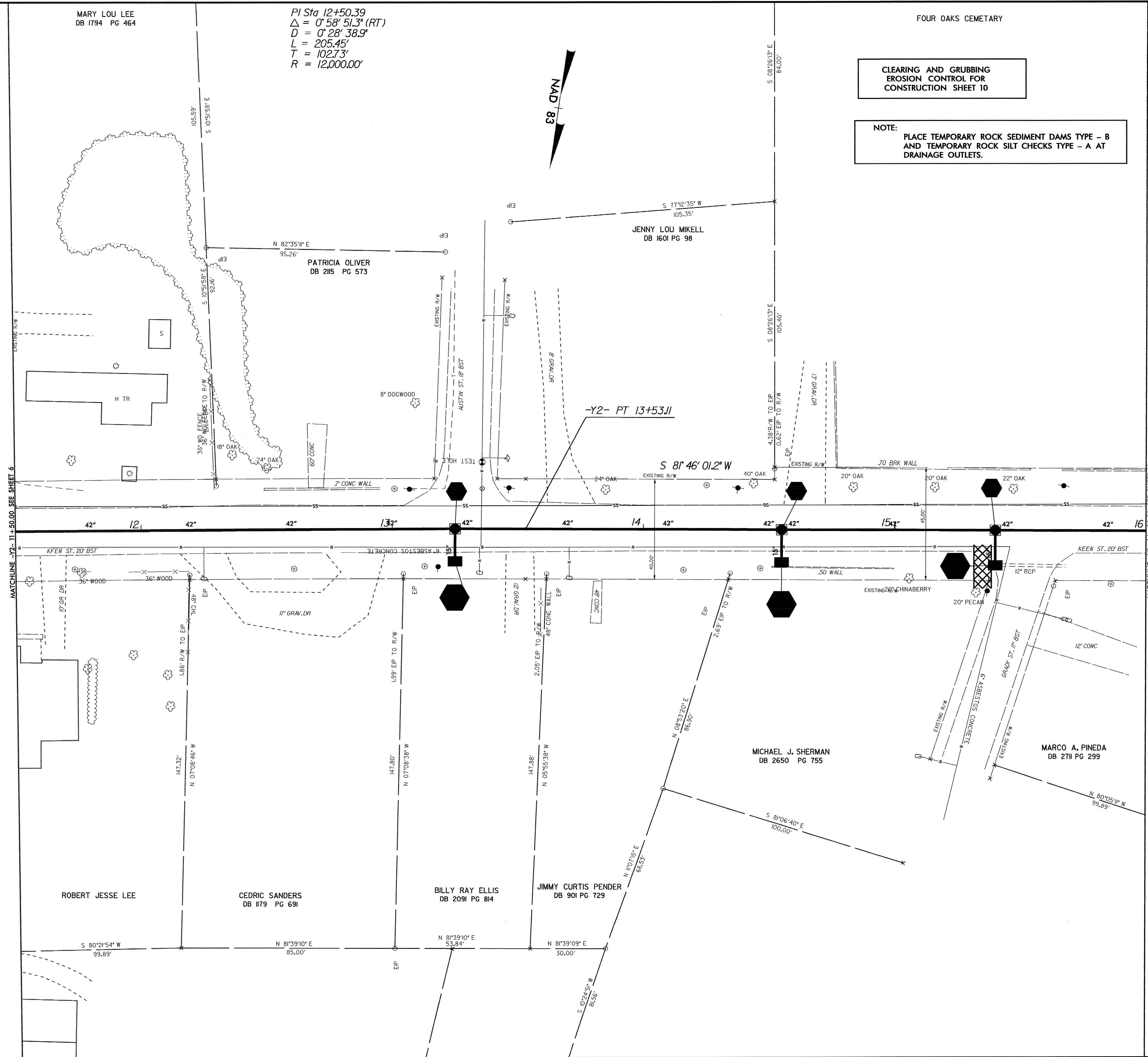
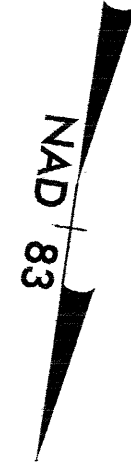
MARY LOU LEE
DB 1794 PG 464

PI Sta 12+50.39
Δ = 0° 58' 51.3" (RT)
D = 0° 28' 38.9"
L = 205.45'
T = 102.73'
R = 12,000.00'

FOUR OAKS CEMETARY

CLEARING AND GRUBBING
EROSION CONTROL FOR
CONSTRUCTION SHEET 10

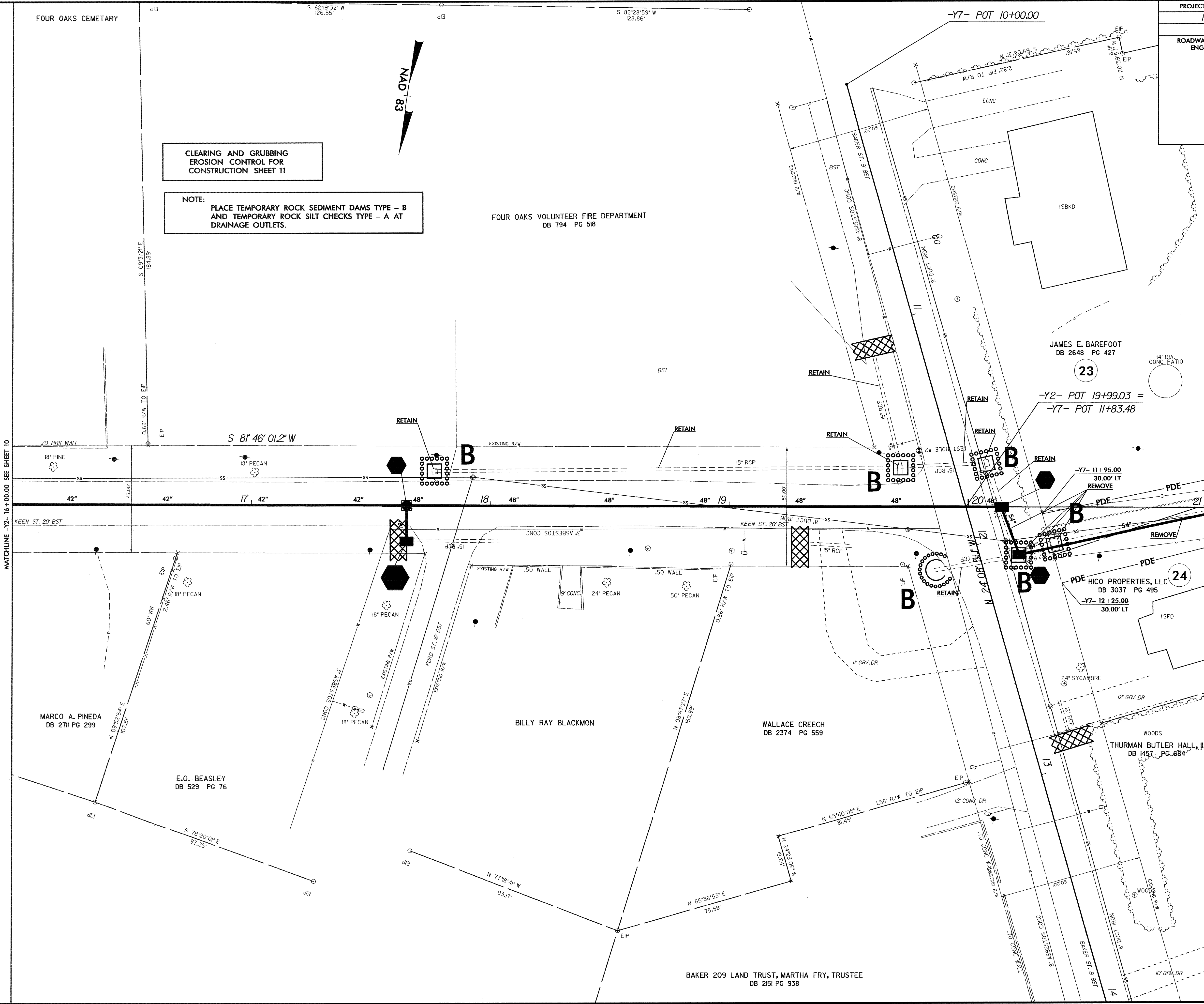
NOTE:
PLACE TEMPORARY ROCK SEDIMENT DAMS TYPE - B
AND TEMPORARY ROCK SILT CHECKS TYPE - A AT
DRAINAGE OUTLETS.



MATCHLINE -Y2- 11-50.00 SEE SHEET 6

MATCHLINE -Y2- 16-00.00 SEE SHEET 11

PROJECT REFERENCE NO. R-4071	SHEET NO. EC-11/CONST.11
RW SHEET NO.	
ROADWAY DESIGN ENGINEER	HYDRAULICS ENGINEER



CLEARING AND GRUBBING
EROSION CONTROL FOR
CONSTRUCTION SHEET 11

NOTE:
PLACE TEMPORARY ROCK SEDIMENT DAMS TYPE - B
AND TEMPORARY ROCK SILT CHECKS TYPE - A AT
DRAINAGE OUTLETS.

MATCHLINE -Y2- 16+00.00 SEE SHEET 10

MATCHLINE -Y2- 21+00.00 SEE SHEET 12

08-MAY-2007 12:49
C:\N\2007\12-49\11-dwg4-psh.11.20.dgn
C:\N\2007\12-49\11-dwg4-psh.11.20.dgn
C:\N\2007\12-49\11-dwg4-psh.11.20.dgn

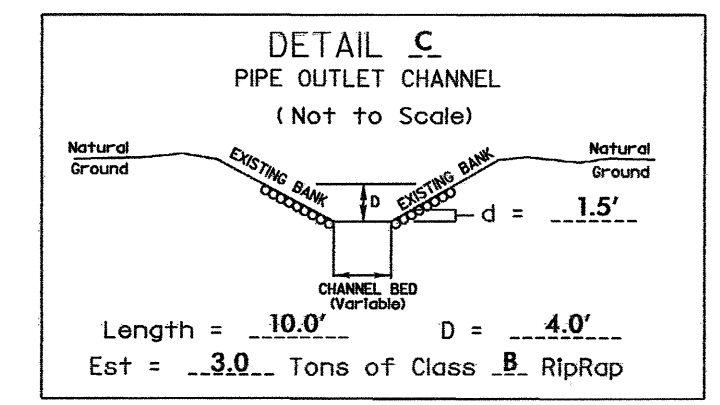
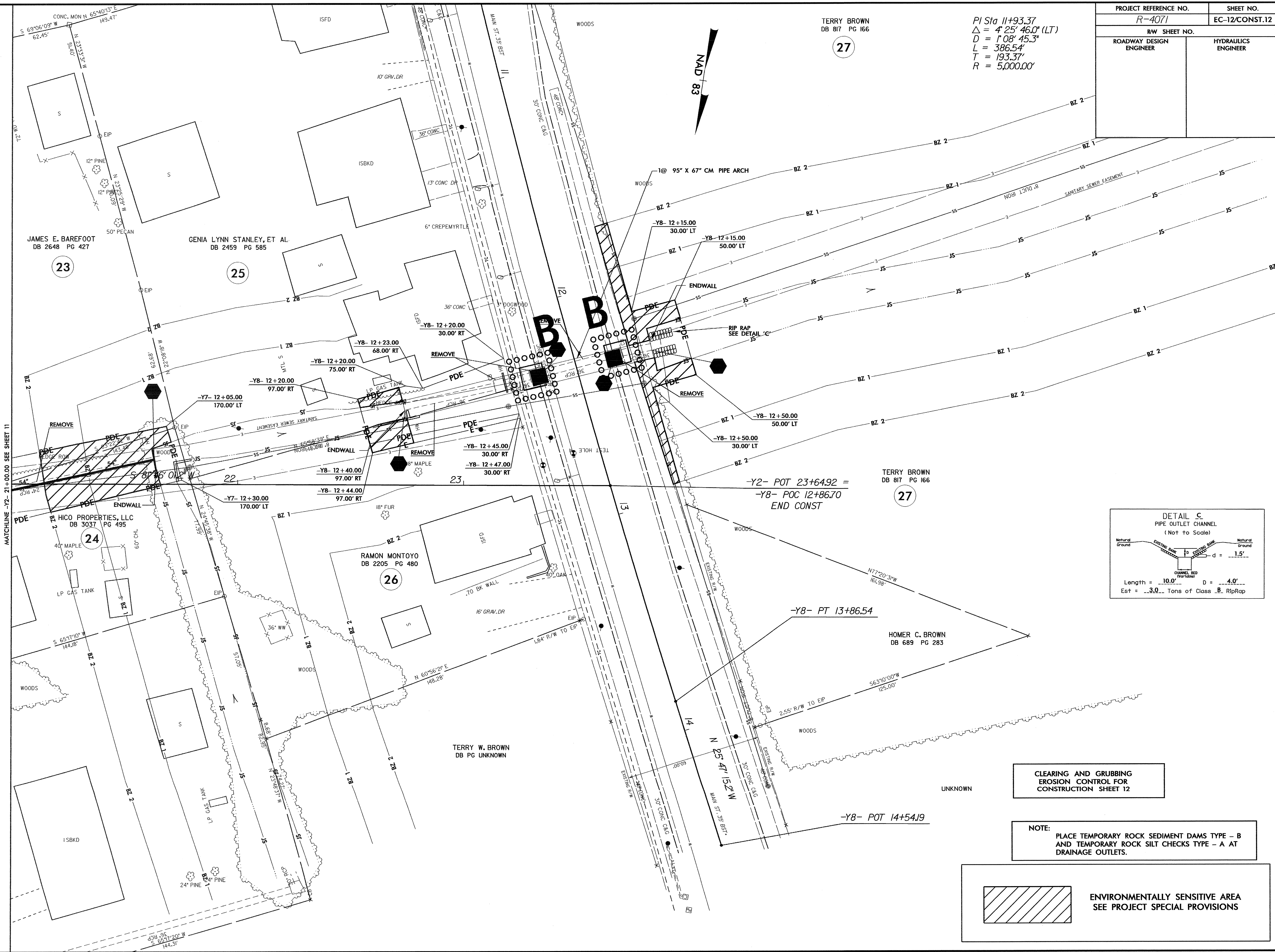
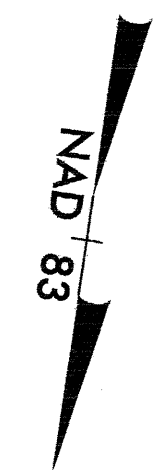
BAKER 209 LAND TRUST, MARTHA FRY, TRUSTEE
DB 2151 PG 938

PROJECT REFERENCE NO. R-4071		SHEET NO. EC-12/CONST.12
RW SHEET NO.		
ROADWAY DESIGN ENGINEER	HYDRAULICS ENGINEER	

TERRY BROWN
DB 817 PG 166

27

PI Sta 11+93.37
 $\Delta = 4' 25' 46.0''$ (LT)
 $D = 1' 08' 45.3''$
 $L = 386.54'$
 $T = 193.37'$
 $R = 5,000.00'$



CLEARING AND GRUBBING
 EROSION CONTROL FOR
 CONSTRUCTION SHEET 12

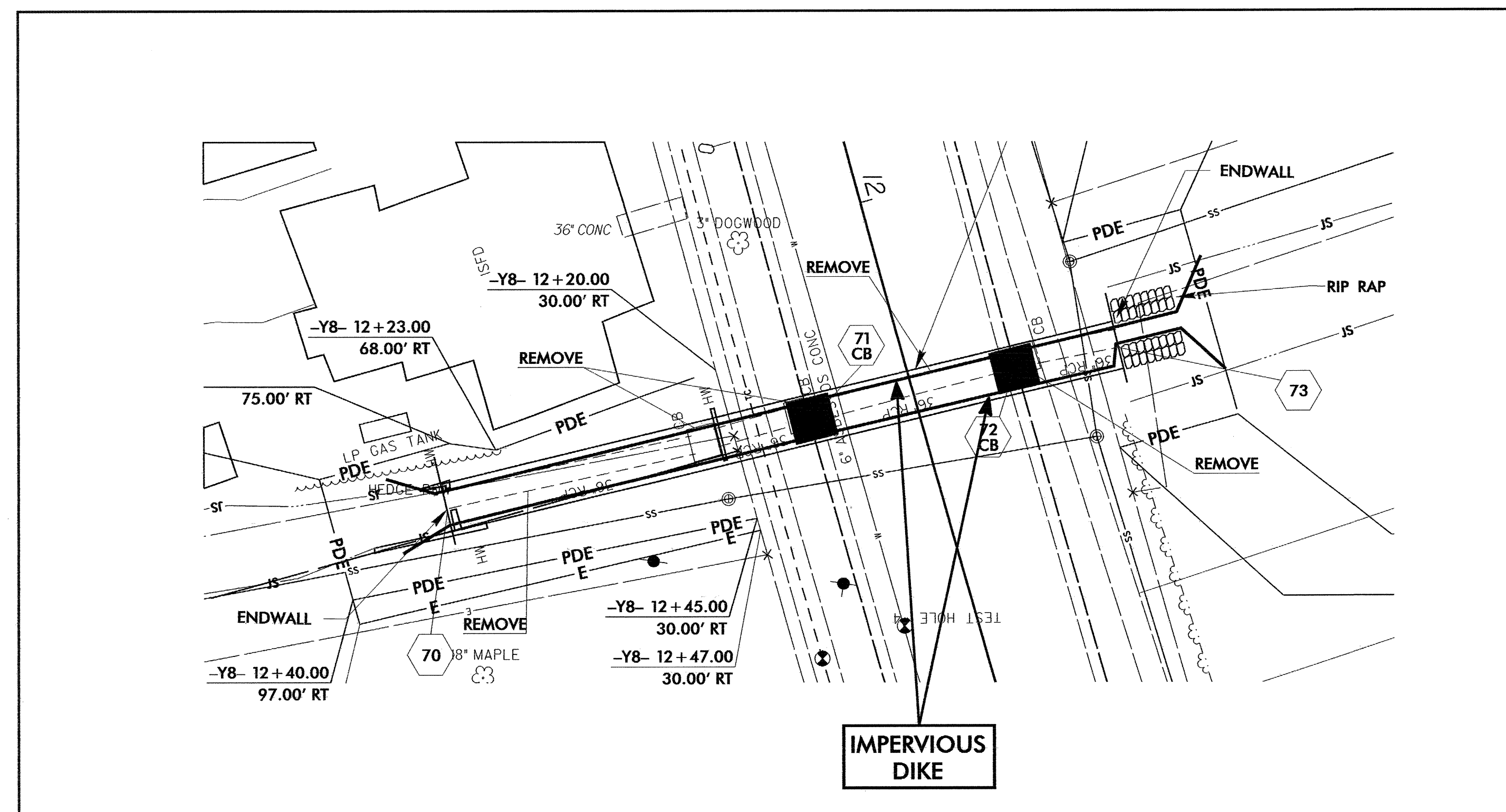
NOTE:
 PLACE TEMPORARY ROCK SEDIMENT DAMS TYPE - B
 AND TEMPORARY ROCK SILT CHECKS TYPE - A AT
 DRAINAGE OUTLETS.

ENVIRONMENTALLY SENSITIVE AREA
 SEE PROJECT SPECIAL PROVISIONS

PROJECT REFERENCE NO. <i>R-4071</i>	SHEET NO. <i>EC-12A/CONSTJ2</i>
RW SHEET NO.	
ROADWAY DESIGN ENGINEER	HYDRAULICS ENGINEER

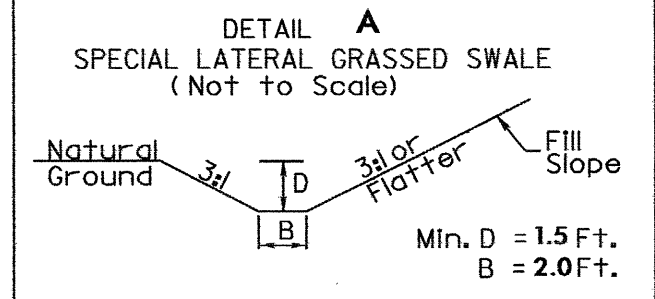
CONSTRUCTION SEQUENCE

1. REMOVE EXISTING PIPE.
2. INSTALL SPECIAL STILLING BASIN.
3. INSTALL IMPERVIOUS DIKE.
4. CONSTRUCT PROPOSED PIPE ARCH.
5. REMOVE SPECIAL STILLING BASIN AND IMPERVIOUS DIKE.
6. COMPLETE ROADWAY.

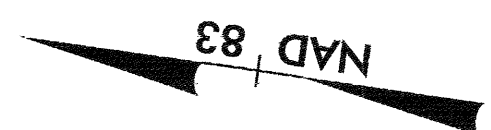
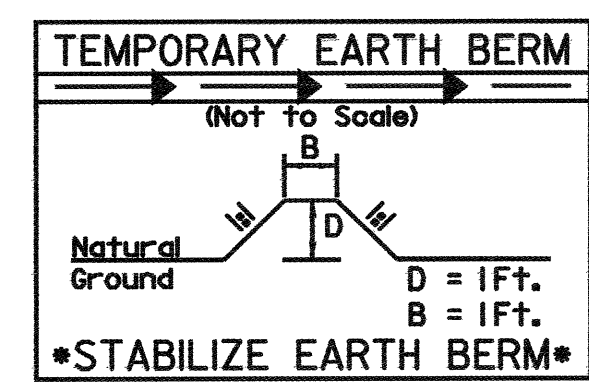


★ EXISTING SIGNAL TO BE UPGRADED
 FOR -L- PROFILE, SEE SHEET NO. 13
 FOR -Y- PROFILE, SEE SHEET NO. 15

TRAFFIC OIL COMPANY
38 x 13 x 3
1.5 inch Skimmer
with 1.375 inch
Orifice Diameter
4 ft. weir
ID 4.1



PROJECT REFERENCE NO. R-4071	SHEET NO. EC-13/CONST.4
R/W SHEET NO. ROADWAY DESIGN ENGINEER	HYDRAULICS ENGINEER



8600 16000	ADT 2004 2025
2800 5200	6000 11600
3200 6400	SR 1178 KEEN RD.
9000 17200	

DATUM DESCRIPTION
 THE LOCALIZED COORDINATE SYSTEM DEVELOPED FOR THIS PROJECT IS BASED ON THE STATE PLANE COORDINATES ESTABLISHED BY NCDOT FOR MONUMENT "12704-1" WITH MAD 83 STATE PLANE GRID COORDINATES OF NORTHING: 612598.5189(1) EASTING: 2169588.922(1) THE AVERAGE COMBINED GRID FACTOR USED ON THIS PROJECT (GROUND TO GRID) IS: 0.99987440 THE N.C. LAMBERT GRID BEARING AND LOCALIZED HORIZONTAL GROUND DISTANCE FROM ALL LINEAR DIMENSIONS ARE LOCALIZED HORIZONTAL DISTANCES VERTICAL DATUM USED IS NGVD 29

LINE -Y1-
 PI Sta 10+92.72
 $\Delta = 6^\circ 40' 48.0''$ (RT)
 D = 7' 09" 43.1"
 L = 93.27'
 T = 46.69'
 R = 800.00'

-Y- POT 17+56.52 =
 -Y1- POT 10+00.00

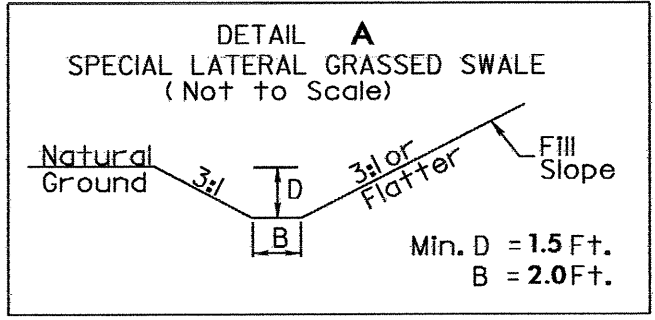
MCLAMB, ANTHONY W.
 & DONNA RENEE
 DB 1519 PG 854

08-MAY-2007 10:19
 d:\y\1-4071\4071_dcd4_psh_04_20.dgn
 nchan AT REN231812

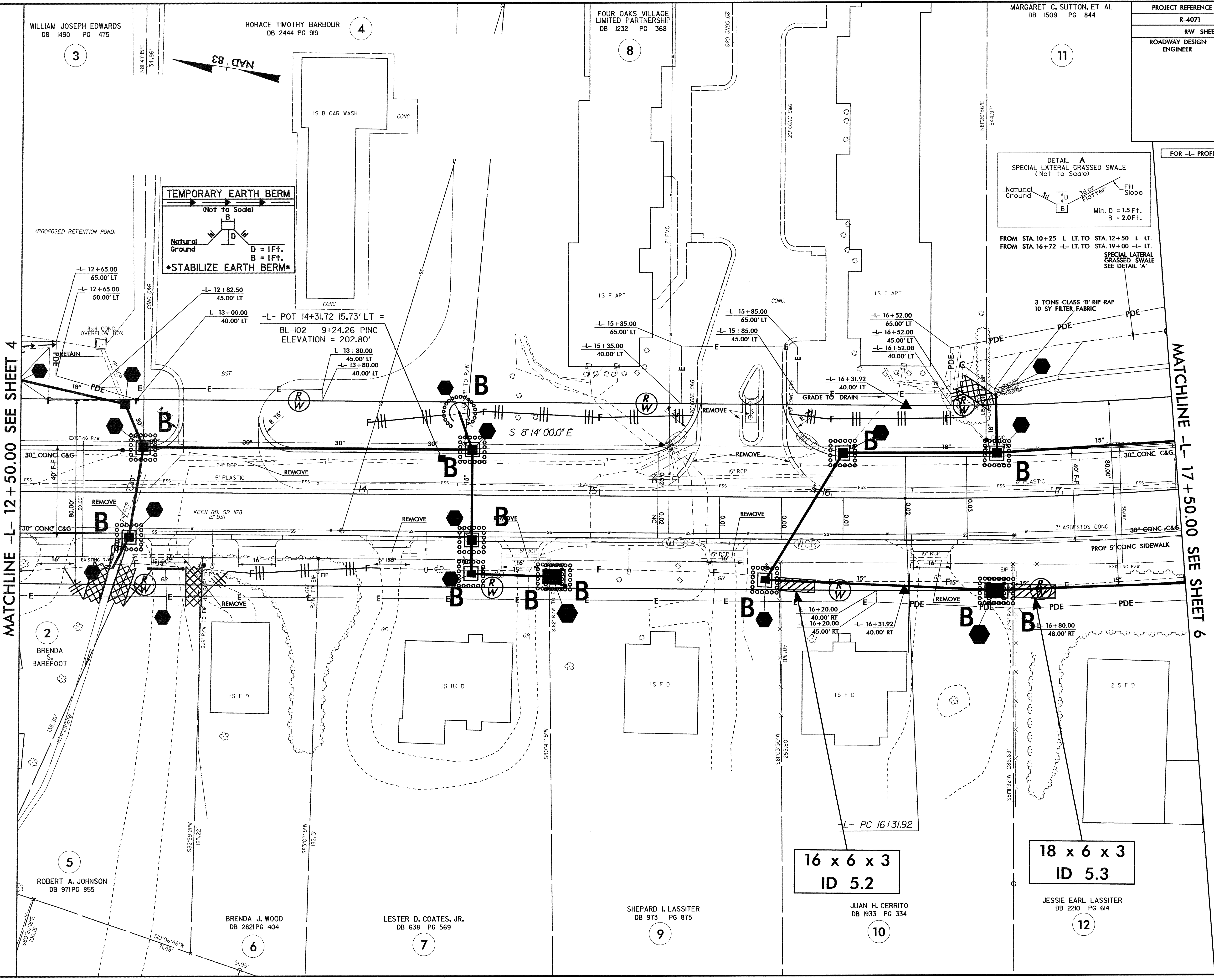
MATCHLINE -L- 12+50.00 SEE SHEET 5

PROJECT REFERENCE NO. R-4071	SHEET NO. EC-14/CONST.5
RW SHEET NO.	
ROADWAY DESIGN ENGINEER	HYDRAULICS ENGINEER

FOR -L- PROFILE, SEE SHEET NO. 13

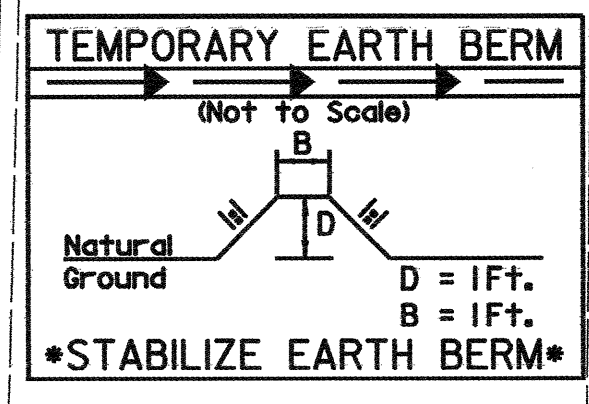


FROM STA. 10+25 -L- LT. TO STA. 12+50 -L- LT.
 FROM STA. 16+72 -L- LT. TO STA. 19+00 -L- LT.
 SPECIAL LATERAL GRASSED SWALE
 SEE DETAIL 'A'



MATCHLINE -L- 12+50.00 SEE SHEET 4

MATCHLINE -L- 17+50.00 SEE SHEET 6



D = 1Ft.
 B = 1Ft.
 STABILIZE EARTH BERM

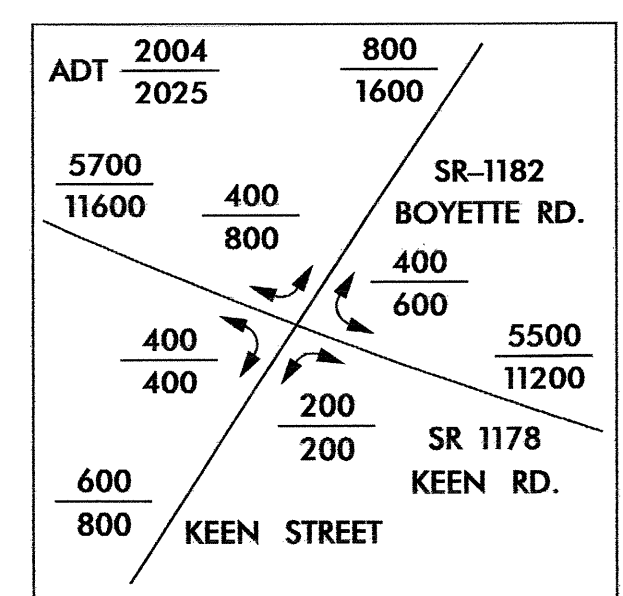
16 x 6 x 3
 ID 5.2

18 x 6 x 3
 ID 5.3

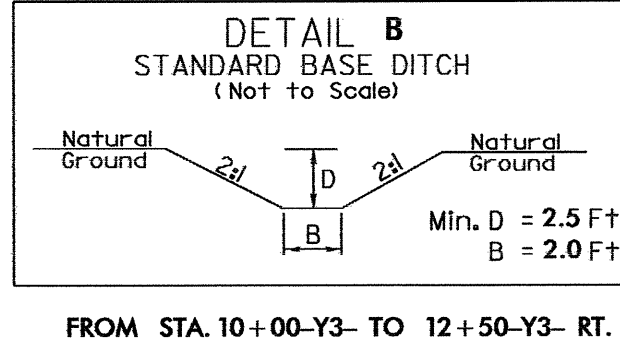
08-MAY-2007 10:21
 d:\y\1-4071\4071\4071\4071.dwg
 AT REN231812

PROJECT REFERENCE NO.	SHEET NO.
R-4071	EC-15/CONST.6
RW SHEET NO.	
ROADWAY DESIGN ENGINEER	HYDRAULICS ENGINEER

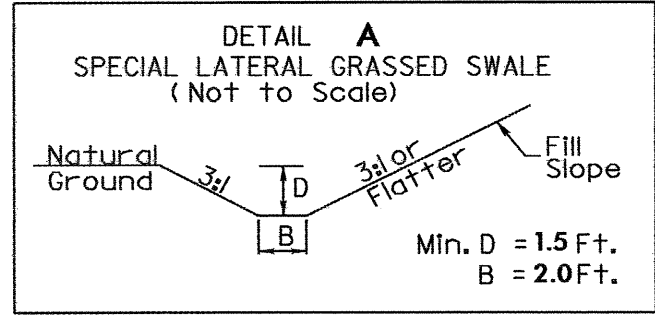
FOR -L- PROFILE, SEE SHEET NO. 14
 FOR -Y2- PROFILE, SEE SHEET NO. 16
 FOR -Y3- PROFILE, SEE SHEET NO. 15



23 x 12 x 3
 4' weir
 ID 6.3



18 x 8 x 3
 4' weir
 ID 6.4



FROM STA. 10+25 -L- LT. TO STA. 12+50 -L- LT.
 FROM STA. 16+72 -L- LT. TO STA. 19+00 -L- LT.

UTILIZE AS SILT BASIN DURING CONSTRUCTION.

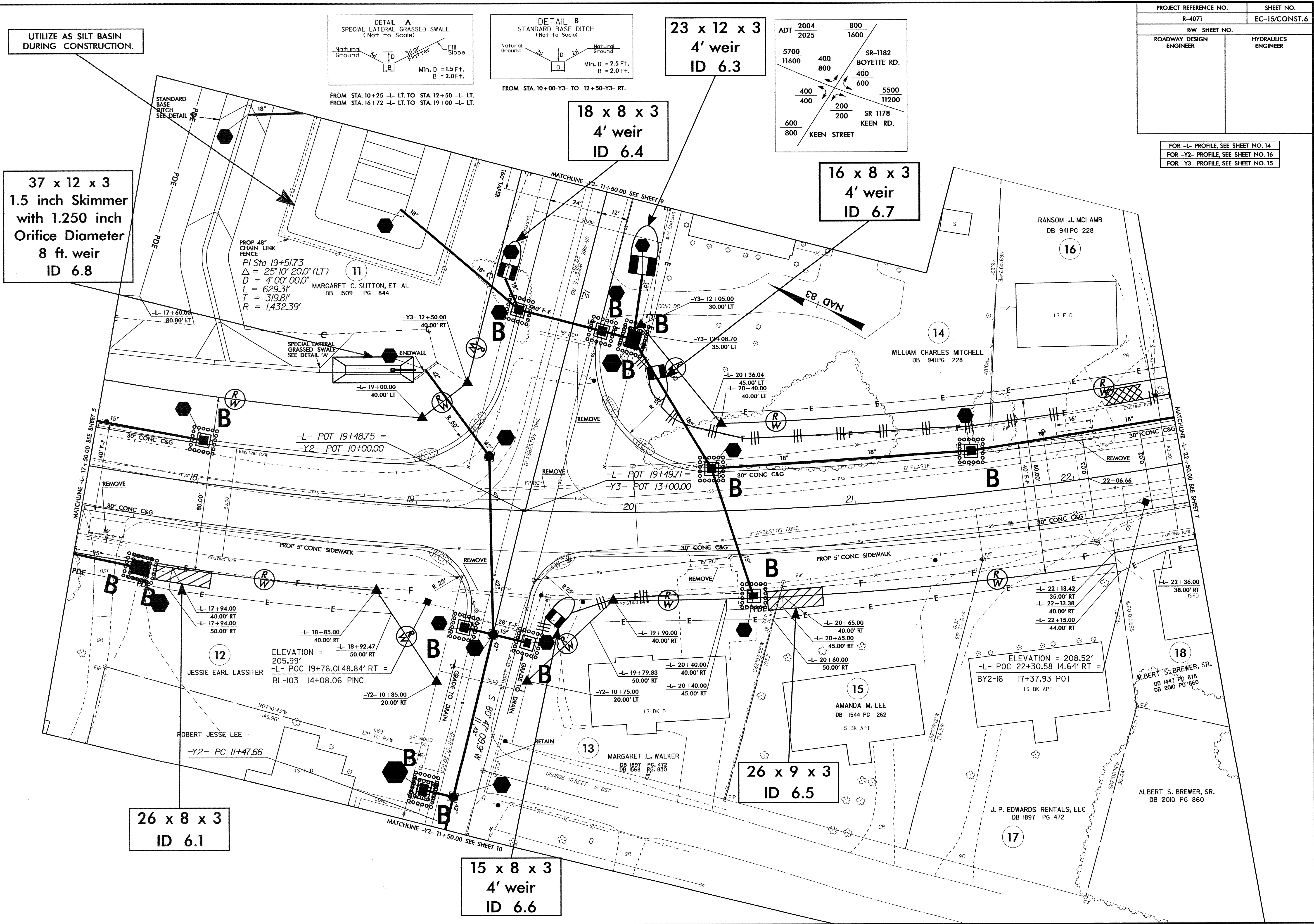
37 x 12 x 3
 1.5 inch Skimmer
 with 1.250 inch
 Orifice Diameter
 8 ft. weir
 ID 6.8

16 x 8 x 3
 4' weir
 ID 6.7

26 x 8 x 3
 ID 6.1

26 x 9 x 3
 ID 6.5

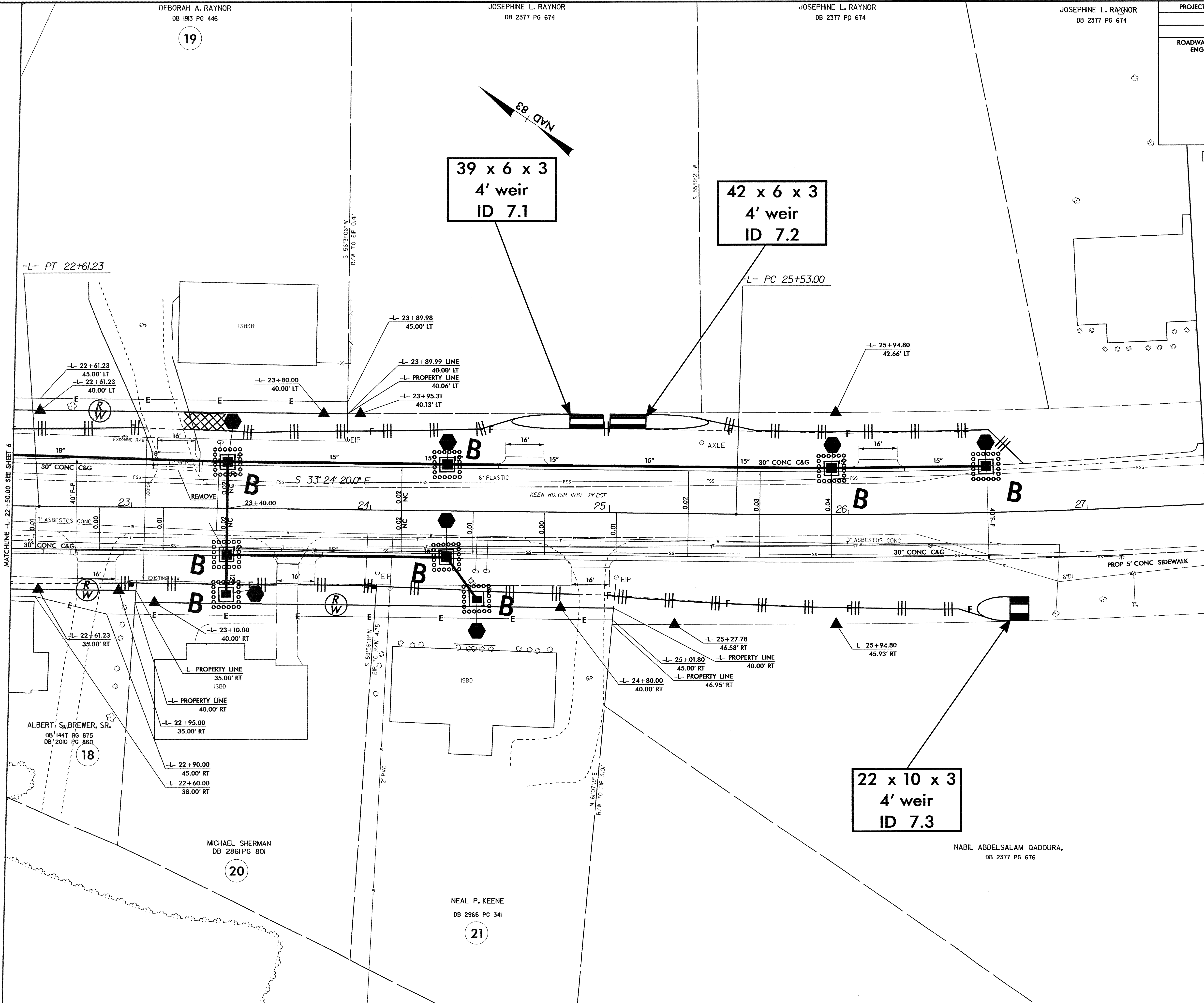
15 x 8 x 3
 4' weir
 ID 6.6



08-MAY-2007 11:26
 d:\yey\407\40715\40715.dwg
 AL REN231512

PROJECT REFERENCE NO. R-4071	SHEET NO. EC-16/CONST.7
RW SHEET NO.	
ROADWAY DESIGN ENGINEER	HYDRAULICS ENGINEER

FOR -L- PROFILE, SEE SHEET NO. 14



DEBORAH A. RAYNOR
DB 1913 PG 446

JOSEPHINE L. RAYNOR
DB 2377 PG 674

JOSEPHINE L. RAYNOR
DB 2377 PG 674

JOSEPHINE L. RAYNOR
DB 2377 PG 674

19

18

20

21

MATCHLINE -L- 22+50.00 SEE SHEET 6

MATCHLINE -L- 27+50.00 SEE SHEET 8

08-MAY-2007 11:27
d:\yau\4071\4071\ec16\ec16_sh_07_20.dgn
nchen AT RENY23181Z

PROJECT REFERENCE NO. R-4071	SHEET NO. EC-17/CONST.8
RW SHEET NO.	
ROADWAY DESIGN ENGINEER	HYDRAULICS ENGINEER

CHARLES EDWARD UPCHURCH
DB 858 PG 8

EDNA S. KEENE
DB 1089 PG. 165

-L- POC 28+25.00
END PROJECT R-4071

PI Sta 28+91.67
 $\Delta = 13^{\circ} 05' 10.0''$ (LT)
 $D = 1' 56' 25.5''$
 $L = 674.40'$
 $T = 338.67'$
 $R = 2,952.75'$

-L- PT 32+27.39

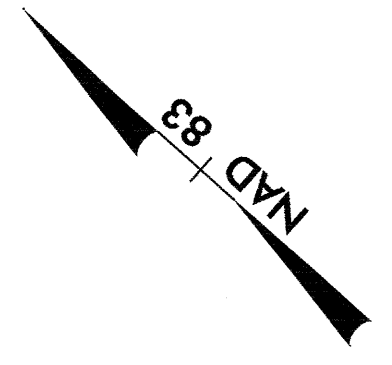
MATCHLINE -L- 27+50.00 SEE SHEET 7

PROP 5' CONC. SIDEWALK

HTR

HTR

PEGGY HOCKADAY
DB 569 PG. 601
PB 41 PG. 103



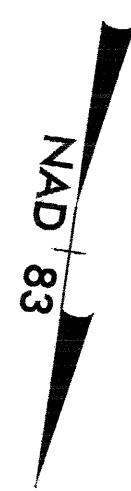
08-MAY-2007 11:53
 d:\yau\1-4071\4071_dcd_psh_08_20.dgn
 nchen AT REN231812

PROJECT REFERENCE NO. R-4071	SHEET NO. EC-19/CONST.10
RW SHEET NO.	
ROADWAY DESIGN ENGINEER	HYDRAULICS ENGINEER

MARY LOU LEE
DB 1794 PG 464

PI Sta 12+50.39
 $\Delta = 0^\circ 58' 51.3" (RT)$
 $D = 0^\circ 28' 38.9"$
 $L = 205.45'$
 $T = 102.73'$
 $R = 12,000.00'$

FOUR OAKS CEMETARY



JENNY LOU MIKELL
DB 1601 PG 98

PATRICIA OLIVER
DB 2115 PG 573

-Y2- PT 13+53.11

S 81° 46' 01.2" W

MICHAEL J. SHERMAN
DB 2650 PG 755

MARCO A. PINEDA
DB 2711 PG 299

ROBERT JESSE LEE

CEDRIC SANDERS
DB 1179 PG 691

BILLY RAY ELLIS
DB 2091 PG 814

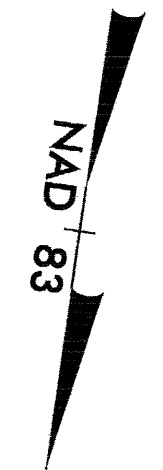
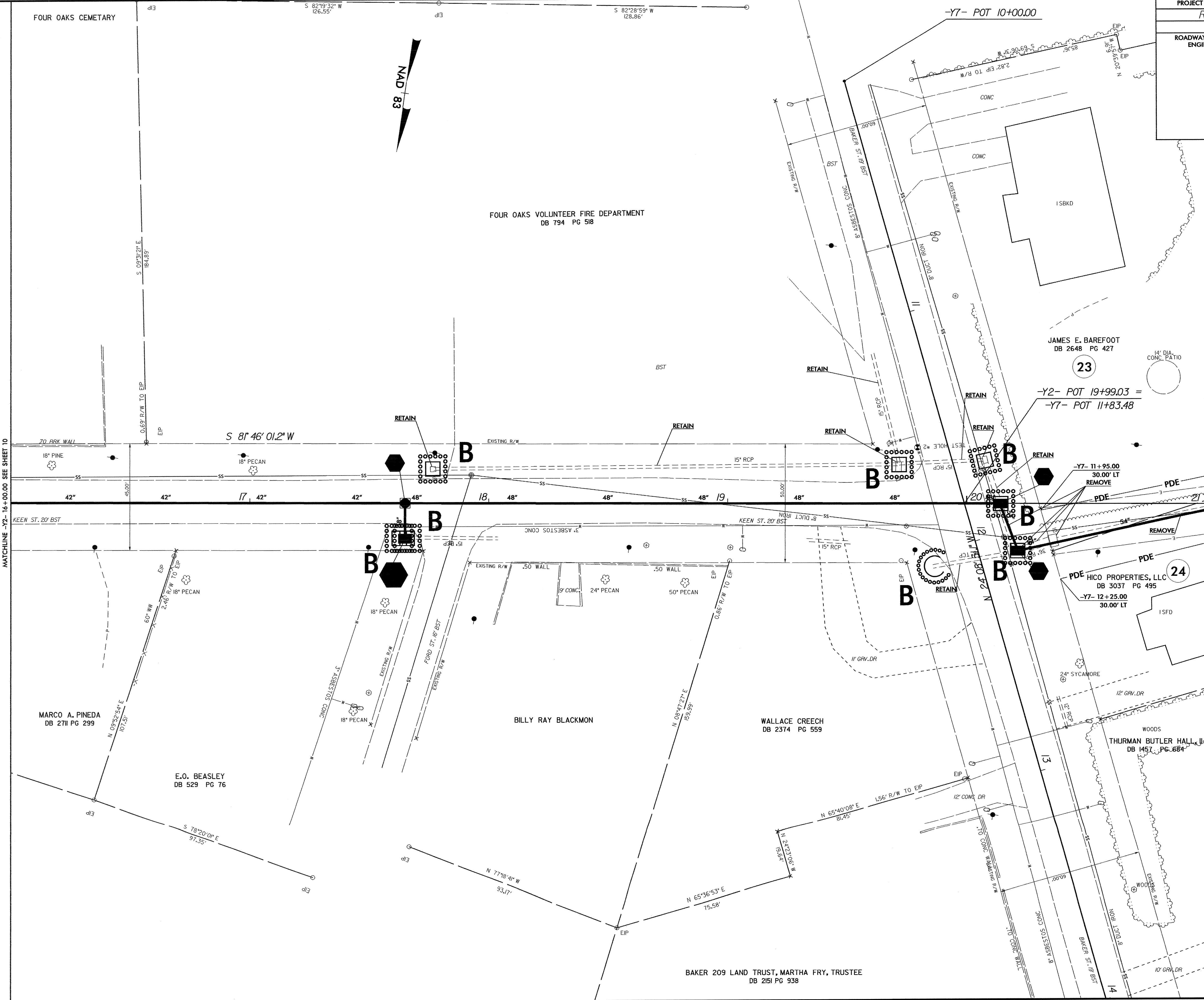
JIMMY CURTIS PENDER
DB 901 PG 729

MATCHLINE -Y2- 11+50.00 SEE SHEET 6

MATCHLINE -Y2- 16+00.00 SEE SHEET 11

08-MAY-2007 12:16
d:\renv\4071\4071_ddec4_psh_10_20.dgn
nctan AT RENV231812

PROJECT REFERENCE NO. R-4071	SHEET NO. EC-20/CONST.11
RW SHEET NO.	
ROADWAY DESIGN ENGINEER	HYDRAULICS ENGINEER



MATCHLINE -Y2- 16+00.00 SEE SHEET 10

MATCHLINE -Y2- 21+00.00 SEE SHEET 12

08-MAY-2007 12:50
C:\p\2007\25071\ddc4.psh.11..20.dgn
PENNY3181

