

STATE OF NORTH CAROLINA  
DIVISION OF HIGHWAYS

STATE PROJECT REFERENCE NO.	SHEET NO.
B-3854	TCP-1

**PLAN FOR PROPOSED  
TRAFFIC CONTROL, MARKING & DELINEATION  
HAYWOOD COUNTY**

B-3854

**ROADWAY STANDARD DRAWINGS**

THE FOLLOWING ROADWAY STANDARDS AS APPEAR IN "ROADWAY STANDARD DRAWINGS"-  
ROADWAY DESIGN UNIT-N.C. DEPARTMENT OF TRANSPORTATION-RALEIGH, N.C.,  
DATED JULY 2006 ARE APPLICABLE TO THIS PROJECT AND BY REFERENCE HEREBY ARE  
CONSIDERED A PART OF THESE PLANS:

STD. NO.	TITLE
1101.02	TEMPORARY LANE CLOSURES
1101.03	TEMPORARY ROAD CLOSURES
1101.04	TEMPORARY SHOULDER CLOSURES
1101.05	WORK ZONE VEHICLE ACCESSES
1101.11	TRAFFIC CONTROL DESIGN TABLES
1110.01	STATIONARY WORK ZONE SIGNS
1110.02	PORTABLE WORK ZONE SIGNS
1115.01	FLASHING ARROW PANELS
1130.01	DRUMS
1135.01	CONES
1145.01	BARRICADES
1150.01	FLAGGING DEVICES
1165.01	TRUCK MOUNTED IMPACT ATTENUATOR
1180.01	SKINNY-DRUM
1205.01	PAVEMENT MARKINGS - LINE TYPES & OFFSETS
1205.02	PAVEMENT MARKINGS - 2 LANE & MULTILANE ROADWAYS
1205.04	PAVEMENT MARKINGS - INTERSECTIONS
1205.12	PAVEMENT MARKINGS - BRIDGES
1250.01	PAVEMENT MARKER SPACING
1251.01	RAISED PAVEMENT MARKERS - PERMANENT & TEMPORARY
1261.01	GUARDRAIL & BARRIER DELINEATOR SPACING
1261.02	GUARDRAIL END DELINEATION
1262.01	GUARDRAIL & BARRIER DELINEATOR TYPES

**INDEX OF SHEETS**

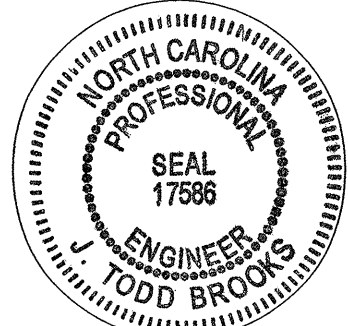
SHEET NO.	TITLE
TCP-1	LIST OF APPLICABLE ROADWAY STANDARD DRAWINGS, LEGEND AND INDEX OF SHEETS
TCP-2	PROJECT NOTES & PAVEMENT MARKING SCHEDULE
TCP-3	PHASE I
TCP-4	PHASE II
TCP-5	PHASE III
TCP-6	WORK ZONE WARNING SIGNS

**LEGEND**

- GENERAL**
- ← DIRECTION OF TRAFFIC FLOW
  - NORTH ARROW
  - PROPOSED PVMT. - - - - - EXIST. PVMT.
  - WORK AREA
  - ▨ REMOVAL OF EXISTING PAVEMENT
- TRAFFIC CONTROL DEVICES**
- I TYPE I BARRICADE
  - II TYPE II BARRICADE
  - ▭ TYPE III BARRICADE
  - ▲ CONE
  - DRUM
  - FLASHING ARROW PANEL (TYPE C)
  - ⊗ TYPE 'B' WARNING LIGHT
  - ⊥ STATIONARY SIGN
  - ⊏ PORTABLE SIGN
  - ⊕ STATIONARY OR PORTABLE SIGN
  - ⚡ WARNING FLAGS
  - ~ CRASH CUSHION
  - ⏏ CHANGEABLE MESSAGE SIGN
  - ⊞ TRUCK MOUNTED IMPACT ATTENUATOR (TMIA)
  - ⊞ POLICE
  - FLAGGER
- PAVEMENT MARKINGS**
- CRYSTAL/CRYSTAL PAVEMENT MARKER
  - ◆ YELLOW/YELLOW PAVEMENT MARKER
  - CRYSTAL/RED PAVEMENT MARKER
  - ↔ PAVEMENT MARKING SYMBOLS

TIP PROJECT:

I7-AUG-2006 10:43  
H:\Trans\ncdot\B3854\TrafficControl\B3854\_te\_tcp01.dgn  
18566

PLAN REVIEWED BY: N.C.D.O.T. WORK ZONE TRAFFIC CONTROL UNIT	APPROVED: <i>J. T. Brooks</i> DATE: 8-17-06	PLAN PREPARED FOR N.C.D.O.T. BY: <b>PBSJ</b> 1616 EAST MILLBROOK ROAD, SUITE 310 RALPHIGH, NORTH CAROLINA 27609 PHONE: (919) 876-6888
J.S. BOURNE, P.E. TRAFFIC CONTROL ENGINEER	SEAL 	J. T. BROOKS, P.E. PROJECT ENGINEER
G. L. GETTIER, P.E. TRAFFIC CONTROL PROJECT ENGINEER		C. R. HALL, P.E. DESIGN ENGINEER
JESSE GILSTRAP TRAFFIC CONTROL PROJ. DESIGN ENGINEER		M. A. STEPHENS, E.I. DESIGN TECHNICIAN
TRAFFIC CONTROL DESIGN ENGINEER		

# GENERAL NOTES

PROJ. REFERENCE NO.	SHEET NO.
B-3854	TCP- 2

ADAPT THE TRAFFIC CONTROL PLANS, WHEN DIRECTED BY THE ENGINEER, TO MEET FIELD CONDITIONS TO PROVIDE SAFE AND EFFICIENT TRAFFIC MOVEMENT. CHANGES MAY BE REQUIRED WHEN PHYSICAL DIMENSIONS IN THE DETAIL DRAWINGS, STANDARD DETAILS AND ROADWAY DETAILS ARE NOT ATTAINABLE, OR RESULT IN DUPLICATE, OR UNDESIRED OVERLAPPING OF DEVICES. MODIFICATION MAY INCLUDE: MOVING, SUPPLEMENTING, COVERING OR REMOVAL OF DEVICES.

THE FOLLOWING GENERAL NOTES APPLY AT ALL TIMES FOR THE DURATION OF THE CONSTRUCTION PROJECT, EXCEPT WHEN OTHERWISE NOTED IN THE PLAN, OR DIRECTED BY THE ENGINEER.

### TIME RESTRICTIONS

A) DO NOT STOP TRAFFIC FOR MORE THAN 30 MINUTES AS FOLLOWS:

ROAD NAME	OPERATION
ALL ROADS	SETTING BOX BEAMS

B) DO NOT CONDUCT ANY HAULING OPERATIONS AGAINST THE FLOW OF TRAFFIC OF AN OPEN TRAVELWAY UNLESS THE WORK AREA IS PROTECTED BY BARRIER OR GUARDRAIL OR OTHERWISE DIRECTED BY THE ENGINEER.

### LANE AND SHOULDER CLOSURE REQUIREMENTS

C) REMOVE LANE CLOSURE DEVICES FROM THE LANE WHEN WORK IS NOT BEING PERFORMED BEHIND THE LANE CLOSURE OR WHEN A LANE CLOSURE IS NO LONGER NEEDED, OR AS DIRECTED BY THE ENGINEER.

D) WHEN PERSONNEL AND/OR EQUIPMENT ARE WORKING WITHIN 40 FT OF AN OPEN TRAVEL LANE, CLOSE THE NEAREST OPEN SHOULDER USING DETAIL ON SHEET TCP-7 UNLESS THE WORK AREA IS PROTECTED BY BARRIER OR GUARDRAIL.

E) WHEN PERSONNEL AND/OR EQUIPMENT ARE WORKING ON THE SHOULDER ADJACENT TO AN UNDIVIDED FACILITY AND WITHIN 5 FT OF AN OPEN TRAVEL LANE, CLOSE THE NEAREST OPEN TRAVEL LANE USING ROADWAY STANDARD DRAWING NO. 1101.02 UNLESS THE WORK AREA IS PROTECTED BY BARRIER OR GUARDRAIL.

WHEN PERSONNEL AND/OR EQUIPMENT ARE WORKING ON THE SHOULDER ADJACENT TO A DIVIDED FACILITY AND WITHIN 10 FT OF AN OPEN TRAVEL LANE, CLOSE THE NEAREST OPEN TRAVEL LANE USING ROADWAY STANDARD DRAWING NO. 1101.02 UNLESS THE WORK AREA IS PROTECTED BY BARRIER OR GUARDRAIL.

F) WHEN PERSONNEL AND/OR EQUIPMENT ARE WORKING WITHIN A LANE OF TRAVEL OF AN UNDIVIDED OR DIVIDED FACILITY, CLOSE THE LANE ACCORDING TO THE TRAFFIC CONTROL PLANS, ROADWAY STANDARD DRAWINGS OR AS DIRECTED BY THE ENGINEER. CONDUCT THE WORK SO THAT ALL PERSONNEL AND/OR EQUIPMENT REMAIN WITHIN THE CLOSED TRAVEL LANE.

G) DO NOT WORK SIMULTANEOUSLY, ON BOTH SIDES OF AN OPEN TRAVELWAY, WITHIN THE SAME LOCATION, ON A TWO-LANE, TWO-WAY ROAD.

H) DO NOT PERFORM WORK INVOLVING HEAVY EQUIPMENT WITHIN 15 FT OF THE EDGE OF TRAVELWAY WHEN WORK IS BEING PERFORMED BEHIND A LANE CLOSURE ON THE OPPOSITE SIDE OF THE TRAVELWAY.

I) PROVIDE TRAFFIC CONTROL FOR APPROPRIATE LANE CLOSURES FOR SURVEYING DONE BY THE DEPARTMENT.

### PAVEMENT EDGE DROP OFF REQUIREMENTS

J) BACKFILL AT A 6:1 SLOPE UP TO THE EDGE AND ELEVATION OF EXISTING ROADWAY IN AREAS ADJACENT TO AN OPENED TRAVEL LANE THAT HAS A DROP-OFF AS FOLLOWS:

BACKFILL DROP-OFFS THAT EXCEED 2 INCHES ON ROADWAYS WITH POSTED SPEED LIMITS OF 45 MPH OR GREATER.

BACKFILL DROP-OFFS THAT EXCEED 3 INCHES ON ROADWAYS WITH POSTED SPEED LIMITS LESS THAN 45 MPH.

BACKFILL WITH SUITABLE COMPACTED MATERIAL, AS APPROVED BY THE ENGINEER, AT NO EXPENSE TO THE DEPARTMENT.

K) DO NOT EXCEED A DIFFERENCE OF 1.5 INCHES IN ELEVATION BETWEEN OPEN LANES OF TRAFFIC. INSTALL ADVANCE WARNING "UNEVEN LANES" SIGNS (W8-11) 500 FT IN ADVANCE OF THE UNEVEN AREA.

### TRAFFIC PATTERN ALTERATIONS

L) NOTIFY THE ENGINEER TWENTY ONE (21) CALENDAR DAYS PRIOR TO ANY TRAFFIC PATTERN ALTERATION.

### SIGNING

M) INSTALL ADVANCE WORK ZONE WARNING SIGNS WHEN WORK IS WITHIN 100 FT (31m) FROM THE EDGE OF TRAVEL LANE AND NO MORE THAN THREE (3) DAYS PRIOR TO THE BEGINNING OF CONSTRUCTION.

WHEN NO WORK IS BEING CONDUCTED FOR A PERIOD LONGER THAN ONE WEEK, REMOVE OR COVER ALL ADVANCE WORK ZONE WARNING SIGNS, AS DIRECTED BY THE ENGINEER, AT NO COST TO THE DEPARTMENT.

N) STATE FORCES WILL BE RESPONSIBLE FOR PERMANENT SIGNING.

O) ENSURE ALL NECESSARY SIGNING IS IN PLACE PRIOR TO ALTERING ANY TRAFFIC PATTERN.

### TRAFFIC CONTROL DEVICES

P) WHEN USING ROADWAY STANDARD NO. 1101.02, DRUMS OR SKINNY-DRUMS MAY BE USED IN LIEU OF CONES ON SR 1309.

Q) SPACE CHANNELIZING DEVICES IN WORK AREAS NO GREATER THAN TWICE THE POSTED SPEED LIMIT (MPH), EXCEPT 10 FT ON-CENTER IN RADII, AND 3 FT OFF THE EDGE OF AN OPEN TRAVELWAY, WHEN LANE CLOSURES ARE NOT IN EFFECT.

R) PLACE TYPE III BARRICADES, WITH "ROAD CLOSED" SIGN R11-2 ATTACHED, OF SUFFICIENT LENGTH TO CLOSE ENTIRE ROADWAY. STAGGER OR OVERLAP BARRICADES TO ALLOW FOR INGRESS OR EGRESS.

### PAVEMENT MARKINGS AND MARKERS

S) INSTALL PAVEMENT MARKINGS AND PAVEMENT MARKERS ON THE FINAL SURFACE AS FOLLOWS:

ROAD NAME	MARKING	MARKER
ALL	PAINT	NONE

T) INSTALL TEMPORARY PAVEMENT MARKINGS AND TEMPORARY PAVEMENT MARKERS ON INTERIM LAYERS OF PAVEMENT AS FOLLOWS:

ROAD NAME	MARKING	MARKER
ALL	PAINT	TEMPORARY

U) TIE PROPOSED PAVEMENT MARKING LINES TO EXISTING PAVEMENT MARKING LINES.

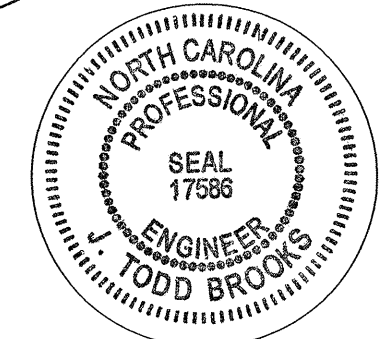
V) REPLACE ANY PAVEMENT MARKINGS THAT HAVE BEEN DAMAGED BY THE END OF EACH DAY'S OPERATION.

W) PLACE AT LEAST TWO APPLICATIONS OF PAINT ON NEW ASPHALT WITH TEMPORARY TRAFFIC PATTERNS WHICH WILL REMAIN IN PLACE OVER THREE (3) MONTHS. PLACE ADDITIONAL APPLICATIONS OF PAINT UPON SUFFICIENT DRYING TIME, AS DETERMINED BY THE ENGINEER.

## PVMT MARKING SCHEDULE


SYMBOL	DESCRIPTION	PAY ITEM	QUANTITY BREAKDOWN	TOTAL QUANTITY
	<b>PAVEMENT MARKING LINES</b>			
		PAINT (4")		18005 LF
PA	WHITE EDGELINE		9195 LF	
PI	DOUBLE YELLOW CENTER LINE		8810 LF	
		PAINT (24")		284 LF
P4	WHITE STOPBAR		284 LF	
	<b>TEMPORARY RAISED PAVEMENT MARKERS</b>			
		MARKERS		100 EA
MH	YELLOW & YELLOW		21 EA	
MP	CRYSTAL & CRYSTAL		79 EA	

APPROVED: *[Signature]* DATE: 8/17/06



SEAL

### PROJECT NOTES & PM SCHEDULE

SCALE: NONE		REVISIONS
DATE: 08/01/06		
DWG. BY: MAS		
DESIGN BY: CRH		
REVIEWED BY: JTB		CADD FILE

I:\AUG-2006\1045\H:\Tran\ncdot\B3854\TrafficControl\B3854\_fe\_tcp02.dgn 18566



# PHASE I

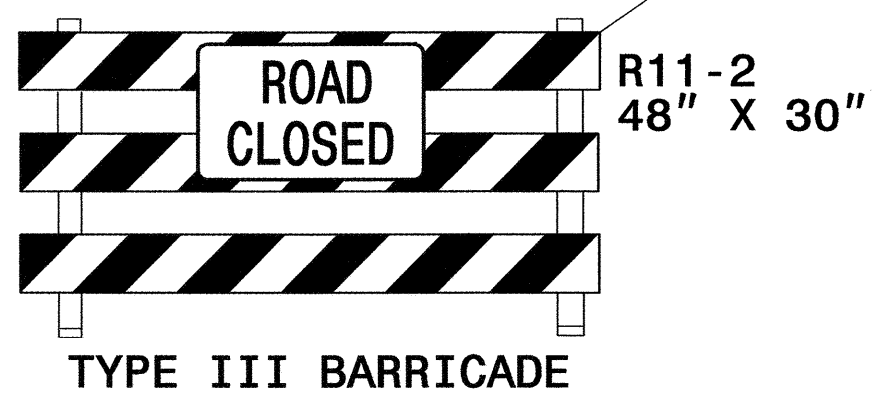
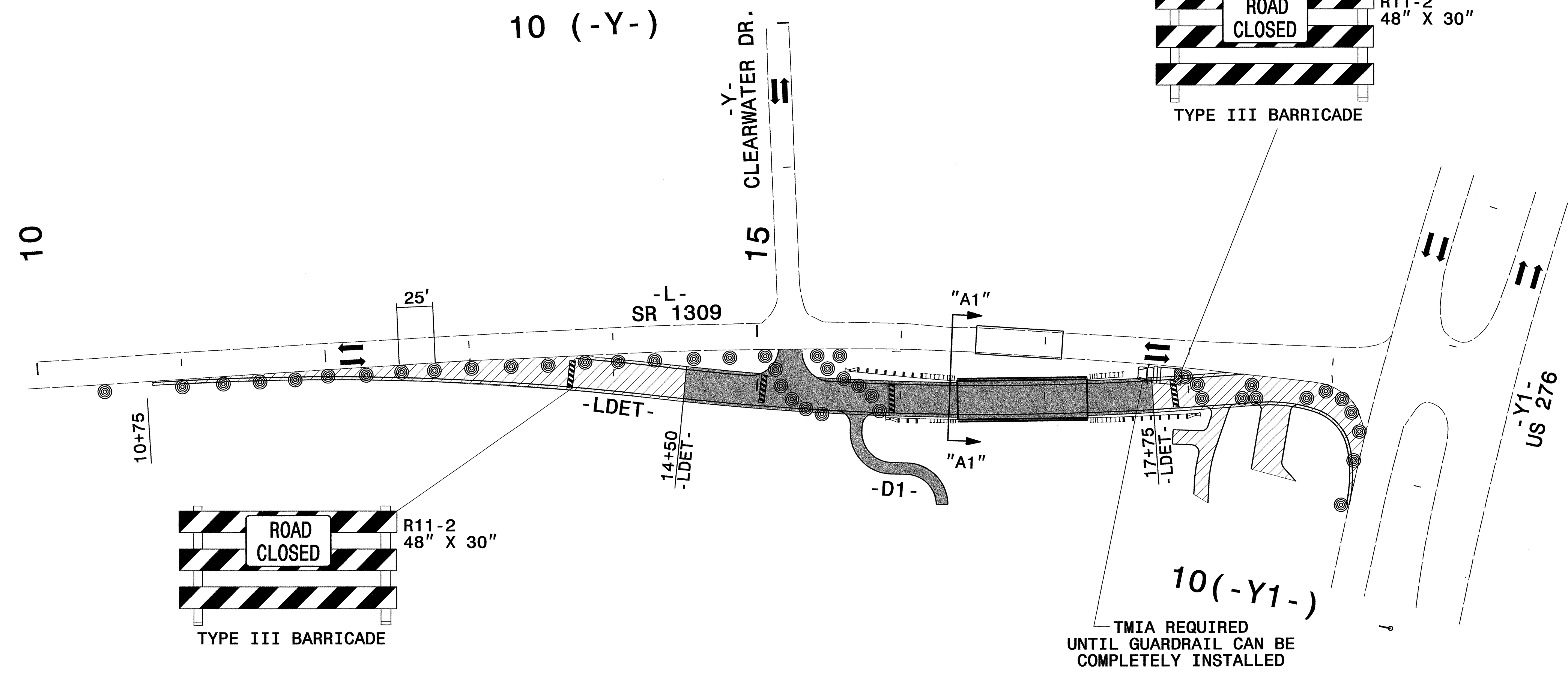
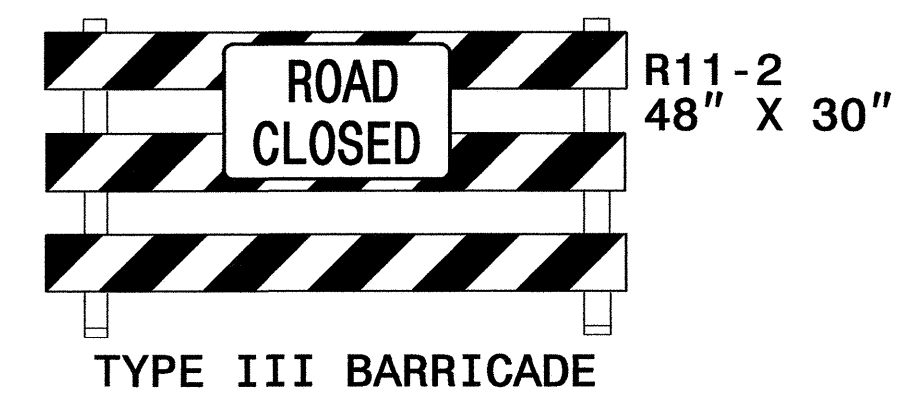
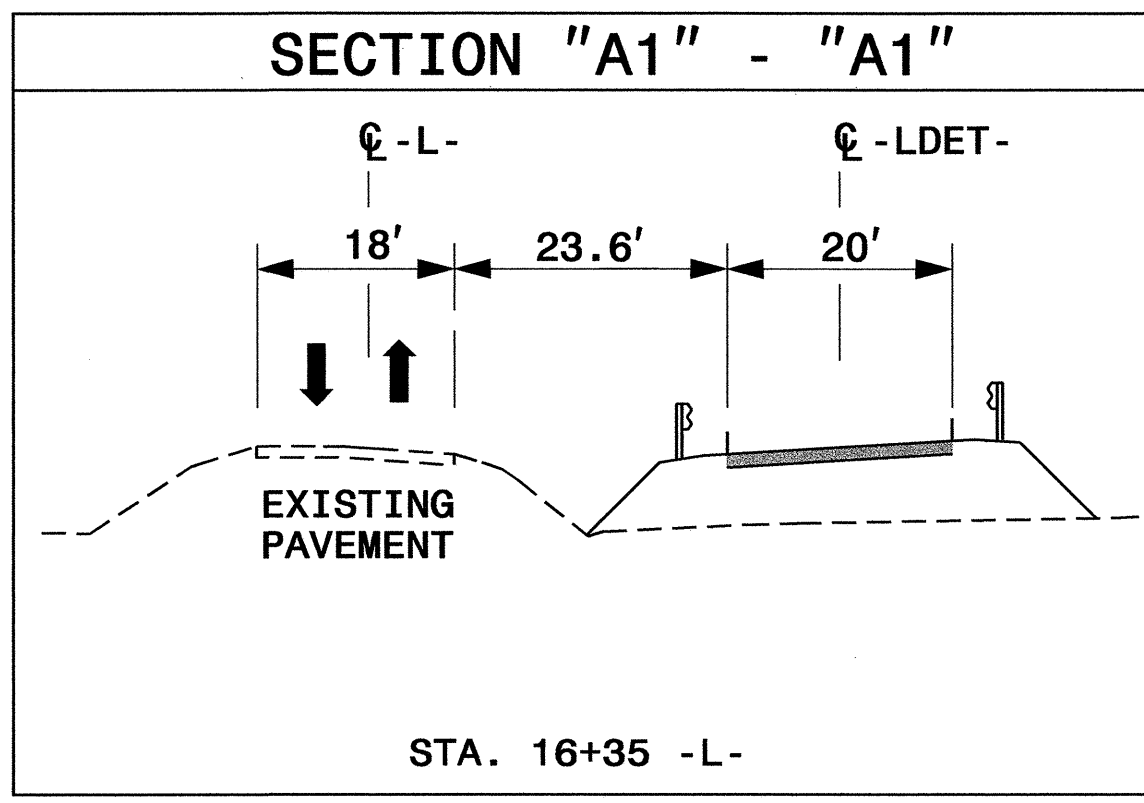
NOTES: RETURN TRAFFIC TO THE EXISTING PATTERN AT THE END OF EACH WORK DAY UNLESS OTHERWISE STATED IN THE PHASING OR DIRECTED BY THE ENGINEER.

COMPLETE ANY PROPOSED OR TEMPORARY WIDENING IN SUCH A MANNER THAT PONDING OF WATER WILL NOT OCCUR IN THE TRAVEL LANE.

PRIOR TO ANY CONSTRUCTION OPERATIONS, PLACE ADVANCED SIGNING IN ACCORDANCE WITH NCDOT DETAIL SHOWN ON SHEET TCP-6.

STEP 1 AWAY FROM TRAFFIC, CONSTRUCT PROPOSED DETOUR (UP TO AND INCLUDING FINAL LAYER OF SURFACE COURSE), DRIVEWAY (-D1-), BRIDGE AND APPROACHES FROM STA 14+50+/- TO STA 17+75+/- . (TMIA WILL BE REQUIRED UNTIL DETOUR GUARDRAIL INSTALLATION CAN BE COMPLETED.)

USING RSD NO 1101.02 (SHEET 1 OF 9), CONSTRUCT PROPOSED DETOUR (-LDET-) FROM STA 10+75+/- TO STA 14+50+/- AND FROM STA 17+75+/- TO EXISTING US 276 UP TO EDGE AND ELEVATION OF EXISTING ROADWAY. USE RSD NO 1101.02 (SHEET 3 OF 9) FOR CONSTRUCTION ADJACENT TO US 276. USE TYPE III BARRICADES AND DRUMS TO KEEP PROPOSED LANES CLOSED TO TRAFFIC. (LN-2)



PROPOSED CONSTRUCTION (AWAY FROM TRAFFIC)  
 PROPOSED CONSTRUCTION (FLAGGERS REQUIRED)

LOCAL NOTES:

LN-1 REMOVE CONFLICTING PAVEMENT MARKING.

LN-2 WHEN A TRAVEL LANE OF SR 1309 (-L-) IS TEMPORARILY CLOSED TO TRAFFIC (FLAGGERS PRESENT) AND CLOSURE IS WITHIN 150' OF US 276 (-Y1-), CLOSE RIGHT THRU LANE OF US 276 USING RSD 1101.02 (SHEET 3 OF 9) AND CREATE TEMPORARY STORAGE LANE TO ACCOMMODATE RIGHT TURN QUEUE.

TMIA REQUIRED UNTIL GUARDRAIL CAN BE COMPLETELY INSTALLED

I6-AUG-2006 11:05 H:\Tran\ncdot\B3854\TrafficControl\B3854\_te\_phase1.dgn 13833

**PBS** 1616 EAST MILLBROOK ROAD, SUITE 310  
RALEIGH, NORTH CAROLINA 27609  
PHONE: (919) 876-6888

APPROVED: *[Signature]* DATE: 8/17/06

SEAL  
  
 SEAL  
 NORTH CAROLINA  
 PROFESSIONAL ENGINEER  
 TODD BROOKS  
 17586

**PHASE I**

SCALE: 1:50	 DIVISION OF HIGHWAYS STATE OF NORTH CAROLINA DEPARTMENT OF TRANSPORTATION CONTROL	REVISIONS
DATE: 08/06		
DWG. BY: MAS		
DESIGN BY: CRH		
REVIEWED BY: JTB		

# PHASE II

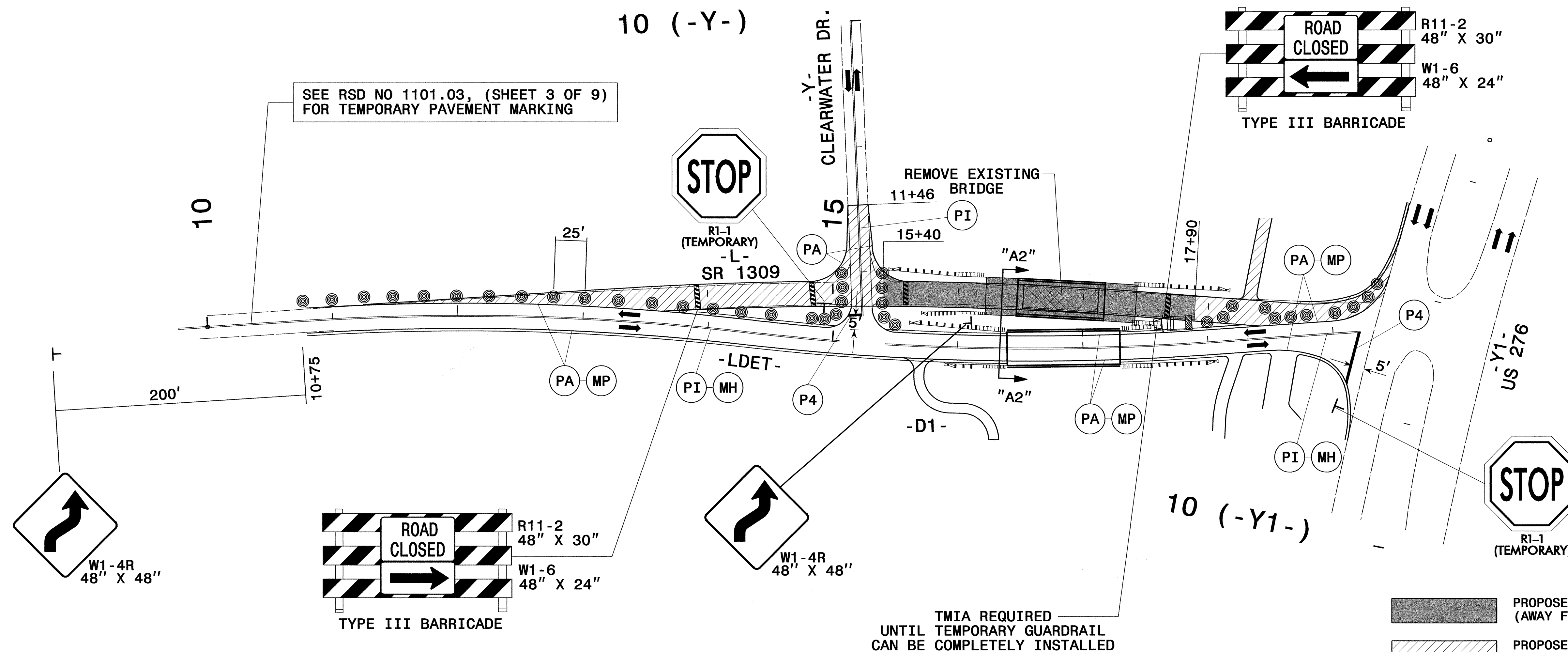
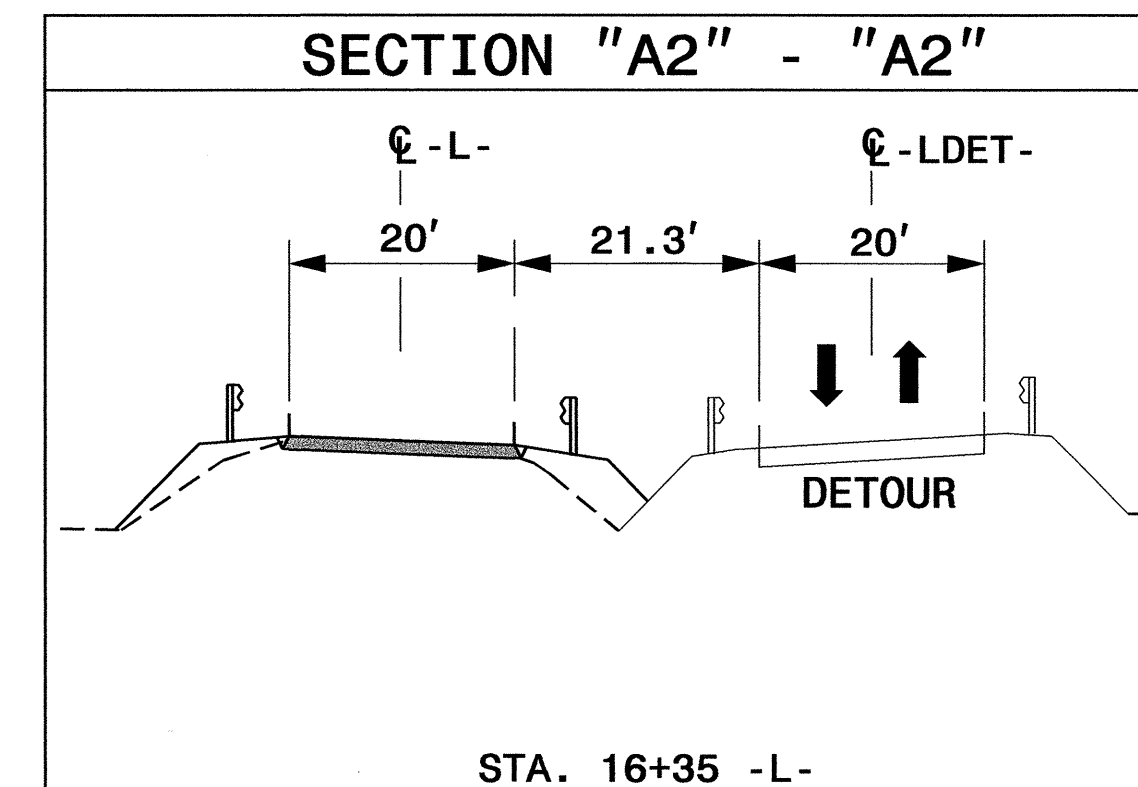
NOTE: COMPLETE ANY PROPOSED OR TEMPORARY WIDENING IN SUCH A MANNER THAT PONDING OF WATER WILL NOT OCCUR IN THE TRAVEL LANE.

- STEP 1 PLACE TEMPORARY PAVEMENT MARKING ON DETOUR (-LDET-). USE RSD NO 1205.12 (NARROW BRIDGE) FOR PAVEMENT MARKING ON BRIDGE. SHIFT TRAFFIC TO DETOUR. (LN-1) (TMIA WILL BE REQUIRED UNTIL DETOUR GUARDRAIL INSTALLATION CAN BE COMPLETED.)
- STEP 2 USING RSD NO 1101.02 (SHEET 1 OF 9), COMPLETE DETOUR GUARDRAIL INSTALLATION. (LN-2)

AWAY FROM TRAFFIC, REMOVE EXISTING BRIDGE, CONSTRUCT PROPOSED ROADWAY, BRIDGE AND APPROACHES ON -L- FROM STA 15+40+/- TO STA 17+90+/- UP TO BUT NOT INCLUDING FINAL LAYER OF SURFACE COURSE.

USING RSD NO 1101.02 (SHEET 1 OF 9) AND RSD NO 1101.02 (SHEET 3 OF 9), WEDGE AND WIDEN THE FOLLOWING UP TO BUT NOT INCLUDING THE FINAL LAYER OF SURFACE COURSE:

- L- FROM STA 10+75 TO STA 15+40+/-
- L- FROM STA 17+90+/- TO EXISTING US 276 (LN-2)
- Y- FROM STA 11+46 TO -L-

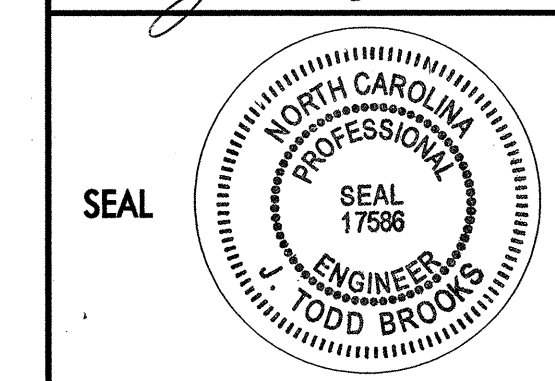


LOCAL NOTES:

LN-1 REMOVE CONFLICTING PAVEMENT MARKING.

LN-2 WHEN A TRAVEL LANE OF SR 1309 (-L-) IS TEMPORARILY CLOSED TO TRAFFIC (FLAGGERS PRESENT) AND CLOSURE IS WITHIN 150' OF US 276 (-Y1-), CLOSE RIGHT THRU LANE OF US 276 USING RSD 1101.02 (SHEET 3 OF 9) AND CREATE TEMPORARY STORAGE LANE TO ACCOMMODATE RIGHT TURN QUEUE.

APPROVED: *[Signature]* DATE: 8/17/06



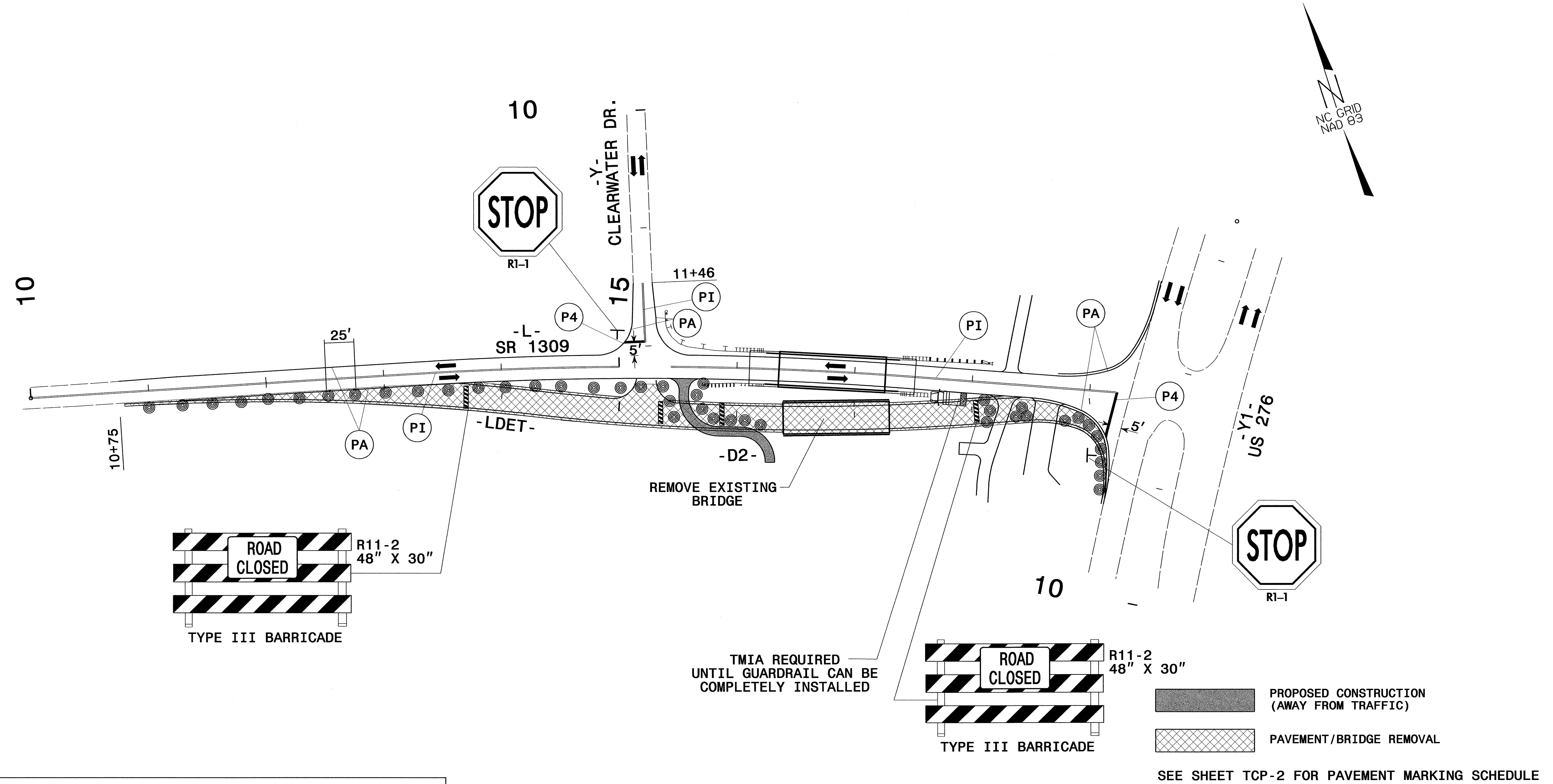
<b>PHASE II</b>	
SCALE: 1:50	REVISIONS
DATE: 08/01/06	
DWG. BY: MAS	
DESIGN BY: CRH	
REVIEWED BY: JTB	

**PBS** 1616 EAST MILLBROOK ROAD, SUITE 310  
RALEIGH, NORTH CAROLINA 27609  
PHONE: (919) 876-6888

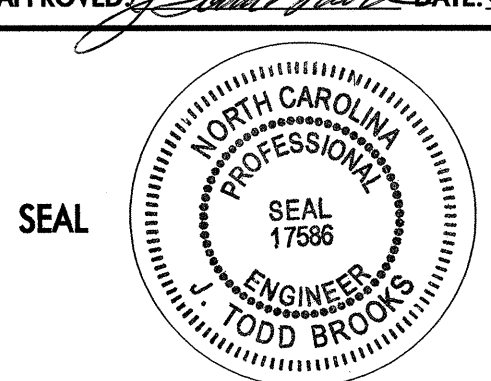
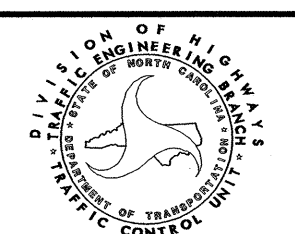
16-AUG-2006 10:00 H:\Tran\ncdot\B3854\TrafficControl\B3854\_te\_phase2.dgn 13833

# PHASE III

- NOTE:** COMPLETE ANY PROPOSED OR TEMPORARY WIDENING IN SUCH A MANNER THAT PONDING OF WATER WILL NOT OCCUR IN THE TRAVEL LANE.
- STEP 1** PLACE TEMPORARY PAVEMENT MARKING ON -L- AND SHIFT TRAFFIC TO -L-. (LN-1) (TMIA WILL BE REQUIRED UNTIL GUARDRAIL INSTALLATION CAN BE COMPLETED.)
- STEP 2** USING RSD 1101.02 (SHEET 1 OF 9) AND RSD NO 1101.02 (SHEET 3 OF 9), COMPLETE ANY REMAINING CONSTRUCTION OF -L- (RIGHT SIDE) AND DRIVEWAY (-D2-) UP TO BUT NOT INCLUDING FINAL LAYER OF SURFACE COURSE AND REMOVE TEMPORARY DETOUR PAVEMENT. (LN-2)
- STEP 3** USING RSD 1101.02 (SHEET 1 OF 9), PLACE FINAL LAYER OF SURFACE COURSE AND FINAL PAVEMENT MARKINGS. (LN-2)



- LOCAL NOTES:**
- LN-1 REMOVE CONFLICTING PAVEMENT MARKING.
- LN-2 WHEN A TRAVEL LANE OF SR 1309 (-L-) IS TEMPORARILY CLOSED TO TRAFFIC (FLAGGERS PRESENT) AND CLOSURE IS WITHIN 150' OF US 276 (-Y1-), CLOSE RIGHT THRU LANE OF US 276 USING RSD 1101.02 (SHEET 3 OF 9) AND CREATE TEMPORARY STORAGE LANE TO ACCOMMODATE RIGHT TURN QUEUE.

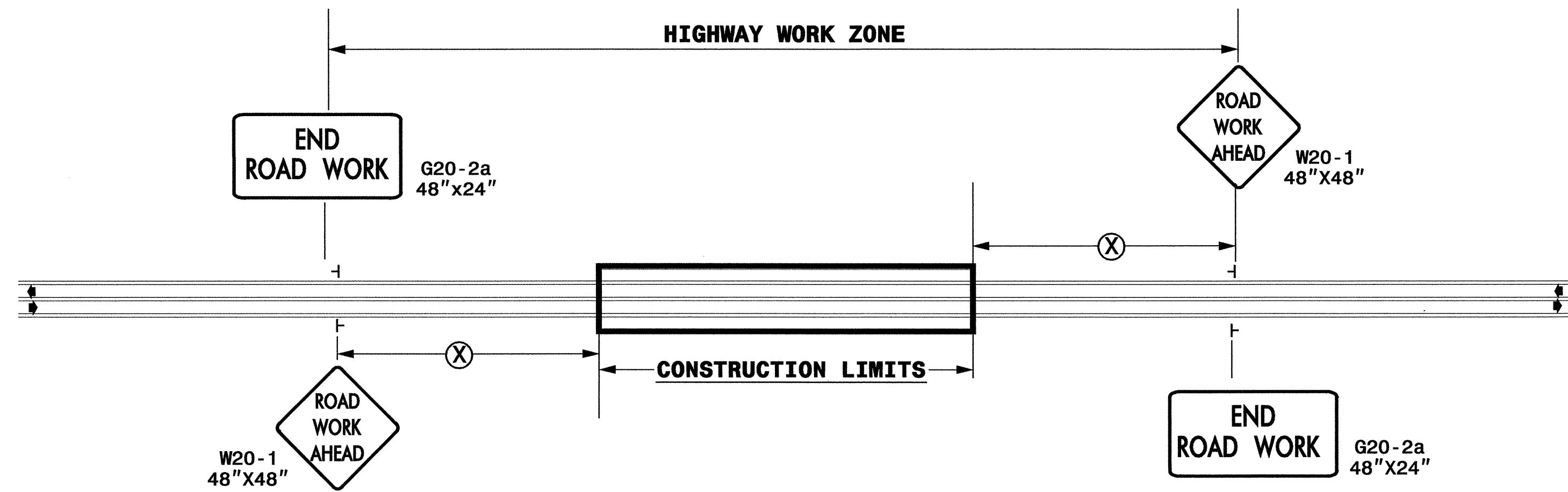
APPROVED: <i>[Signature]</i> DATE: 8/17/06		<b>PHASE III</b>	
			
SCALE:	1:50		REVISIONS
DATE:	080106		
DWG. BY:	MAS		
DESIGN BY:	CRH		
REVIEWED BY:	JTB		

**PBS&J** 1616 EAST MILLBROOK ROAD, SUITE 310  
 RALEIGH, NORTH CAROLINA 27609  
 PHONE: (919) 876-6888

I6-AUG-2006 11:06  
 H:\Tans\ncdot\B3854\TrafficContr\B3854\_te\_phase3.dgn  
 13833



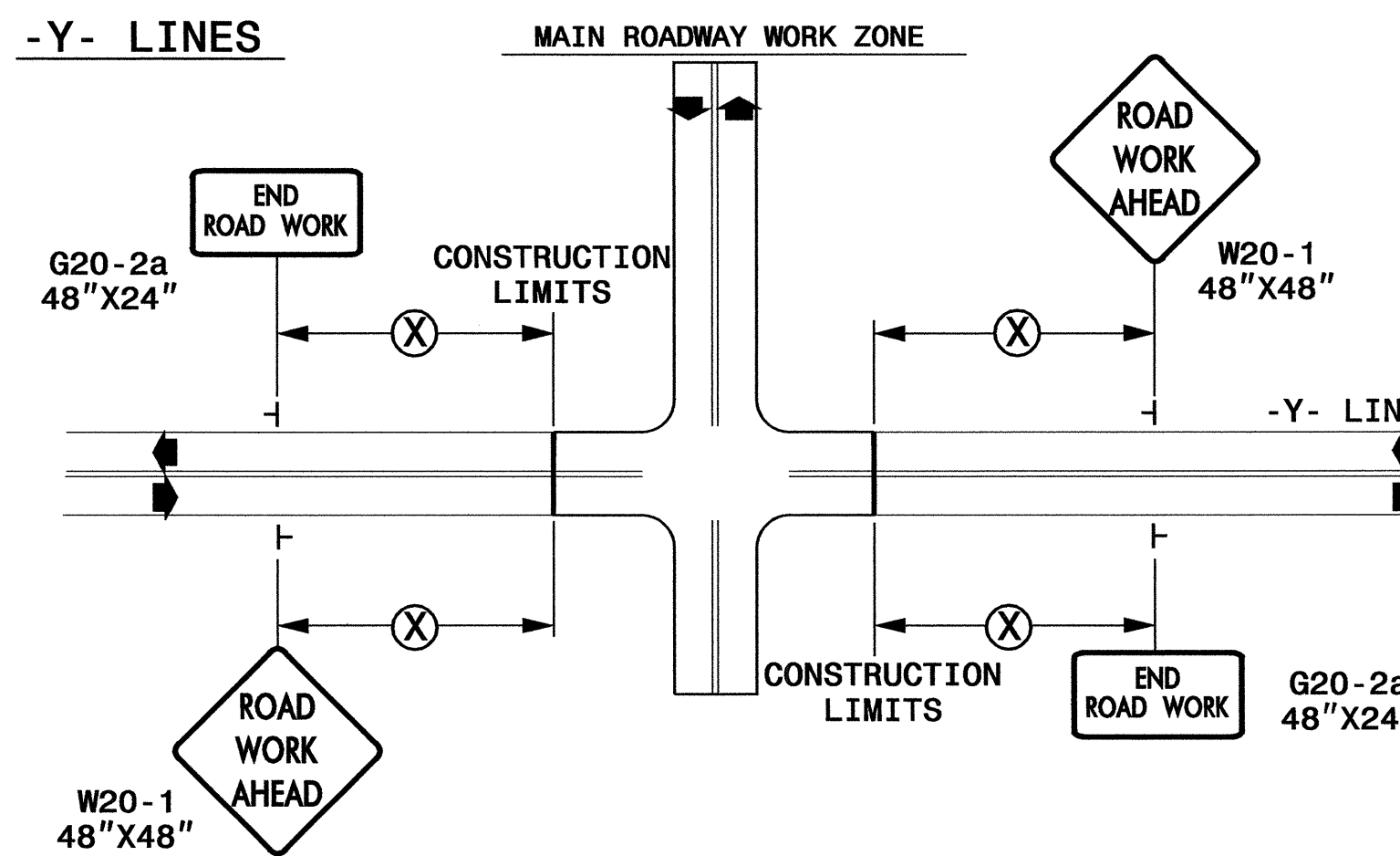
**TWO-WAY UNDIVIDED \*\* (L-LINES)**



POSTED SPEED LIMIT (M.P.H.)	RECOMMENDED MINIMUM SIGN SPACING
≤ 50	500'
≥ 55	1000'

STATE OF NORTH CAROLINA  
DEPT. OF TRANSPORTATION  
DIVISION OF HIGHWAYS  
RALEIGH, N.C.

**ROADWAYS INTERSECTING ALONG 2 WAY UNDIVIDED WORK ZONE (Y-LINES)**



DETAIL DRAWING FOR  
TWO-WAY UNDIVIDED  
WORK ZONE WARNING SIGNS

**GENERAL NOTES**

- USE FLUORESCENT ORANGE SHEETING (TYPE VII OR HIGHER) ON ALL ADVANCED WORK ZONE SIGNS.
- DO NOT INSTALL ADVANCE WARNING SIGNS MORE THAN 3 DAYS PRIOR TO BEGINNING OF WORK.
- SIGNS SHOWN ARE REQUIRED FOR WORK ZONES THAT WILL REMAIN IN EFFECT OVERNIGHT. FOR SHORT-TERM DAILY MAINTENANCE TYPE OPERATIONS, THIS SIGNING APPLICATION IS OPTIONAL; MAY USE ONLY APPLICABLE ROADWAY STANDARD DRAWINGS INSTEAD. HOWEVER, IF THIS SIGNING APPLICATION IS USED, SIGNS MAY BE PORTABLE MOUNTED.
- ALL SIGN SPACING DIMENSIONS ARE APPROXIMATE, FIELD ADJUST AS NECESSARY OR AS DIRECTED.
- USE 3LB STEEL U-CHANNEL POST OR 4" X 4" WOOD POST FOR ALL WORK ZONE SIGNS. 3LB STEEL U-CHANNEL POSTS MUST MEET THE REQUIREMENTS OF STANDARD SPECIFICATION SECTION 1094-1(B), MAY BE GALVANIZED STEEL, OR MAY BE PAINTED GREEN BY THE POST MANUFACTURER. SQUARE STEEL TUBING POSTS HAVING EQUIVALENT STRENGTH OF THE 3 LB STEEL U-CHANNEL POST ARE ALSO ACCEPTABLE FOR USE. ERECT SIGNS PER ROADWAY STANDARD DRAWING 1110.01. PAYMENT FOR WOOD POSTS, 3LB STEEL U-CHANNEL AND SQUARE STEEL TUBING POSTS WITH SIGNS WILL BE MADE ACCORDING TO STANDARD SPECIFICATION "WORK ZONE SIGNS" SECTION 1110.
- WHEN NECESSARY, USE SPLICING IN ACCORDANCE WITH ROADWAY STANDARD DRAWING NO. 1110.01. REMOVE ENTIRE POST WHEN REMOVING SIGNS WITH SPLICED POSTS.
- DO NOT BACK BRACE SIGN SUPPORTS.
- \*\* TWO-WAY UNDIVIDED ADVANCE WARNING SIGN CONFIGURATION MAY BE USED ON URBAN MULTI-LANE FACILITIES WHERE CONDITIONS LIMIT THE USE OF DUAL MOUNTED SIGNS AS DETERMINED BY THE ENGINEER.

**LEGEND**

┆	STATIONARY SIGN
◀	DIRECTION OF TRAFFIC FLOW

SHEET 1 OF 1

APPROVED: <i>[Signature]</i> DATE: 8/17/06	DETAIL DRAWING FOR TWO-WAY UNDIVIDED AND URBAN FREEWAYS ADVANCED WORK ZONE WARNING SIGNS	
	SCALE: NONE	REVISIONS
	DATE: 7-98	10/01
	DWG. BY:	10-98 03/04
	DESIGN BY:	01/01 11/04
REVIEWED BY:		CADD FILE