

TIP PROJECT: B-3854

STATE OF NORTH CAROLINA
DIVISION OF HIGHWAYS
PLAN FOR PROPOSED
HIGHWAY EROSION CONTROL

HAYWOOD COUNTY

**LOCATION: BRIDGE NO. 329 OVER JONATHAN CREEK
ON SR 1309**

**TYPE OF WORK: GRADING, DRAINAGE, PAVING, AND
STRUCTURES**

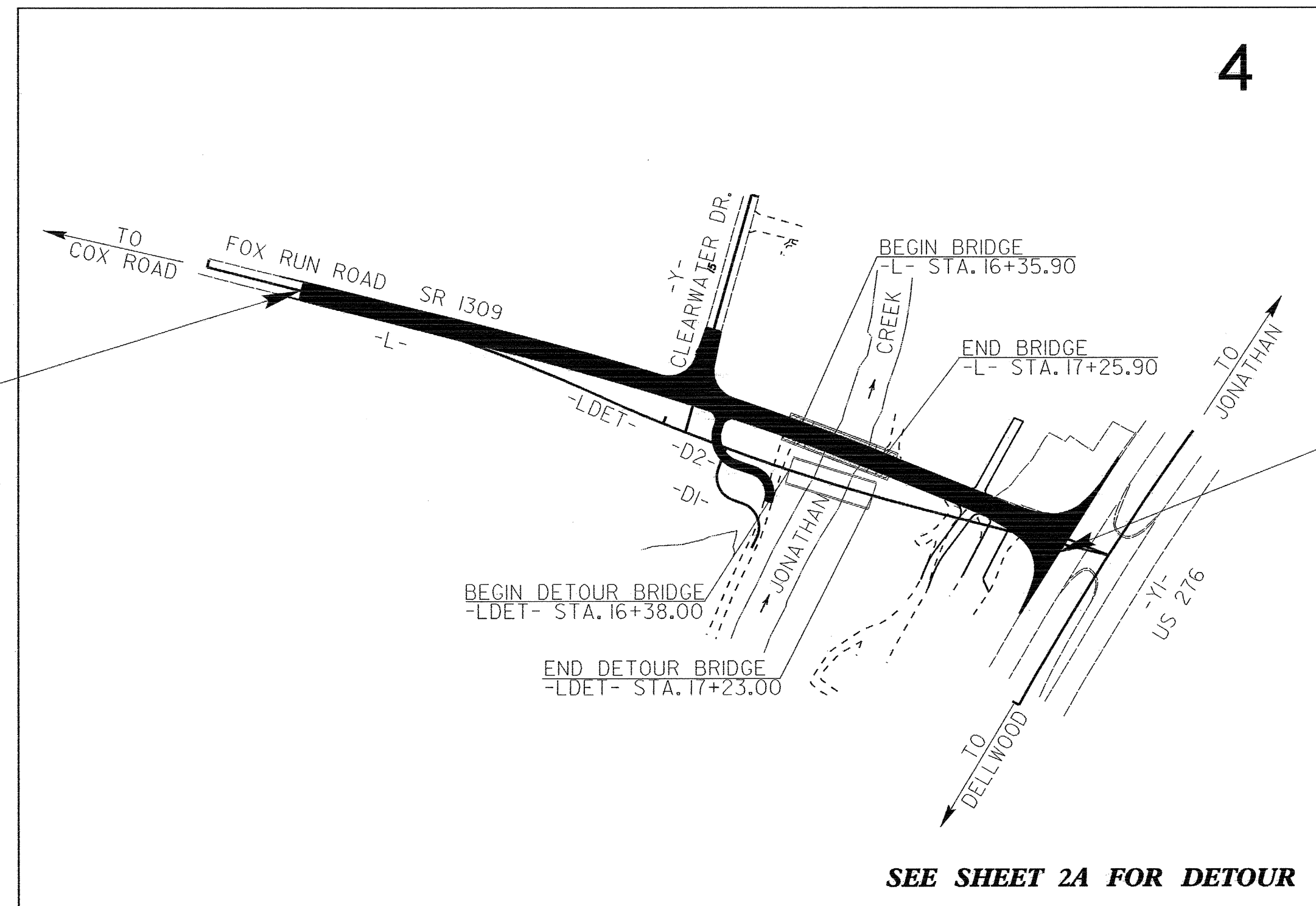
STATE	STATE PROJECT REFERENCE NO.	SHEET NO.	TOTAL SHEETS
N.C.	B-3854	EC-1	
STATE PROJ. NO.	F.A. PROJ. NO.	DESCRIPTION	

EROSION AND SEDIMENT CONTROL MEASURES

Std. #	Description	Symbol
	Streambank Reforestation	
1630.03	Temporary Silt Ditch	
1630.05	Temporary Diversion	
1605.01	Temporary Silt Fence	
1606.01	Special Sediment Control Fence	
1622.01	Temporary Berms and Slope Drains	
1630.01	Riser Basin	
1630.02	Silt Basin Type B	
1635.01	Temporary Rock Silt Check Type-A	
	Temporary Rock Silt Check Type-B	
1634.01	Temporary Rock Sediment Dam Type-A	
1634.02	Temporary Rock Sediment Dam Type-B	
1635.01	Rock Pipe Inlet Sediment Trap Type-A	
1635.02	Rock Pipe Inlet Sediment Trap Type-B	
1630.04	Stilling Basin	
	Rock Inlet Sediment Trap:	
	Type A	
1632.01	Type B	
1632.02	Type C	
1632.03	Type C	
	Skimmer Basin	
	Tiered Skimmer Basin	



POT -L- STA. 10+75.00
BEGIN TIP PROJECT B-3854



POT -L- STA. 19+35.75
END TIP PROJECT B-3854

THIS PROJECT CONTAINS
EROSION CONTROL PLANS
FOR CLEARING AND
GRUBBING PHASE OF
CONSTRUCTION.

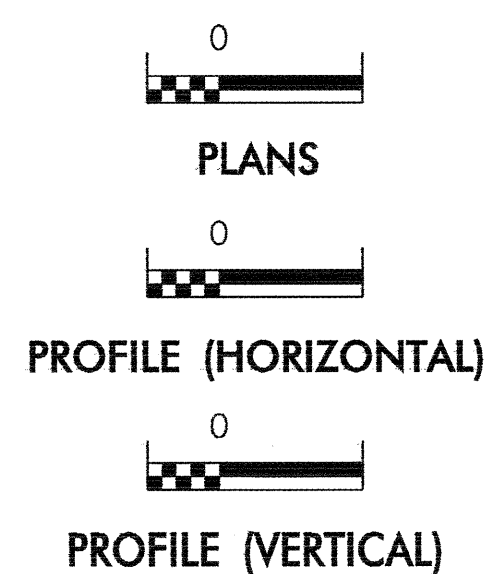
THIS PROJECT HAS
BEEN DESIGNED TO
SENSITIVE WATERSHED
STANDARDS.

ENVIRONMENTALLY
SENSITIVE AREA(S) EXIST
ON THIS PROJECT

*Refer To E. C. Special Provisions
for Special Considerations.*

SEE SHEET 2A FOR DETOUR

GRAPHIC SCALE



ROADSIDE ENVIRONMENTAL UNIT
DIVISION OF HIGHWAYS
STATE OF NORTH CAROLINA

Prepared In the Office of:
ROADSIDE ENVIRONMENTAL UNIT
1 South Wilmington St.
Raleigh, NC 27611
2006 STANDARD SPECIFICATIONS

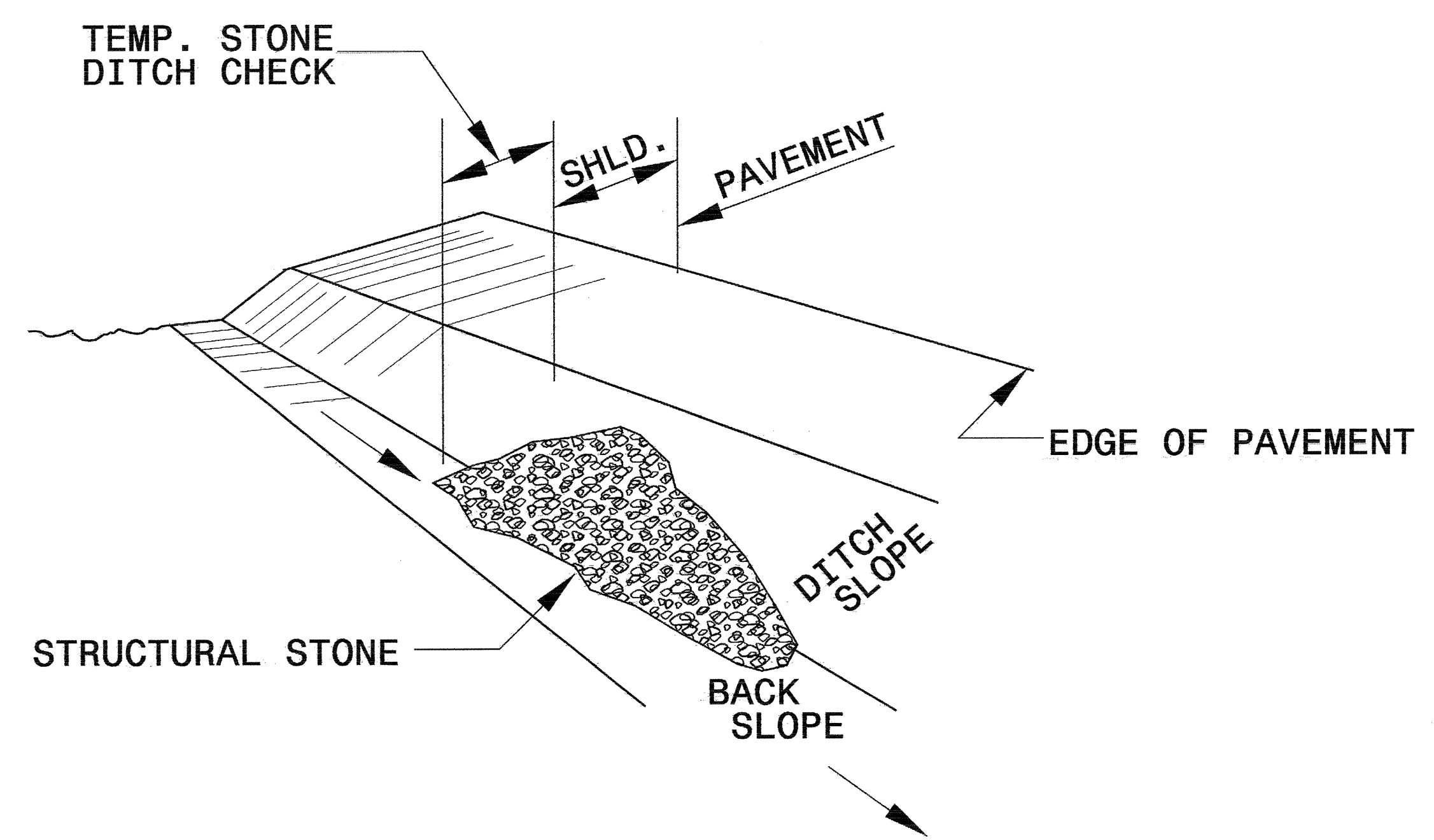
Roadway Standard Drawings

The following roadway english standards as appear in "Roadway Standard Drawings"- Roadway Design Unit - N. C. Department of Transportation - Raleigh, N. C., dated July 18, 2006 and the latest revision thereto are applicable to this project and by reference hereby are considered a part of these plans.

- 1605.01 Temporary Silt Fence
- 1607.01 Gravel Construction Entrance
- 1630.03 Temporary Silt Ditch
- 1630.05 Temporary Diversion
- 1632.03 Rock Inlet Sediment Trap Type C
- 1633.01 Temporary Rock Silt Check Type A
- 1635.02 Rock Pipe Inlet Sediment Trap Type B

PROJECT REFERENCE NO. B-3854	SHEET NO. EC-2
RW SHEET NO.	
ROADWAY DESIGN ENGINEER	HYDRAULICS ENGINEER

TEMPORARY ROCK SILT CHECK TYPE 'B' DETAIL

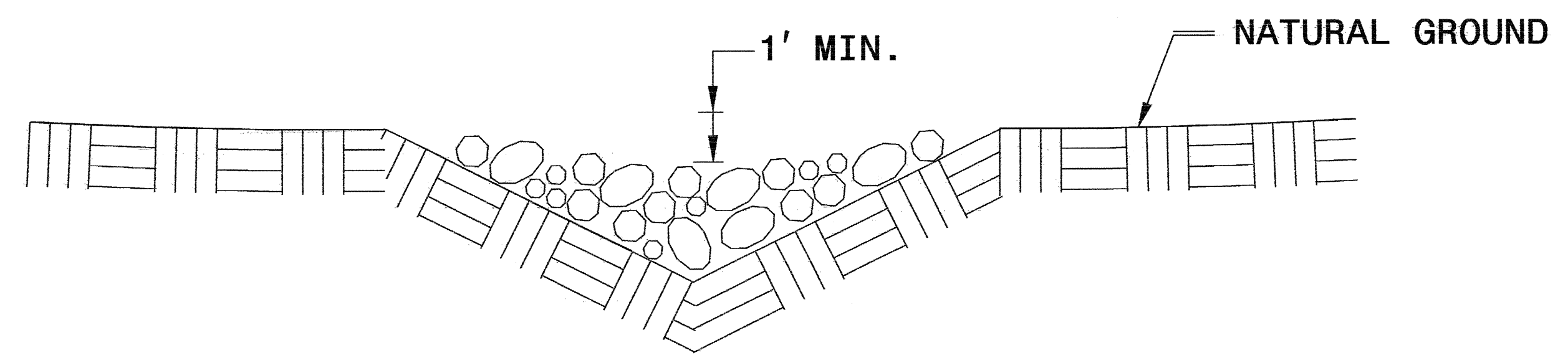


ISOMETRIC VIEW

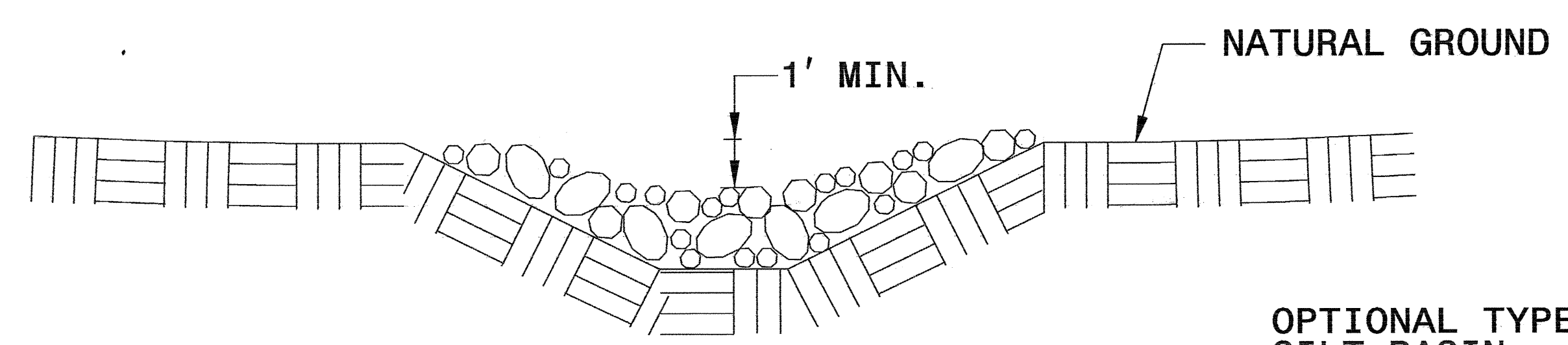
NOTES:

USE CLASS 'B' EROSION CONTROL STONE FOR STRUCTURAL STONE.

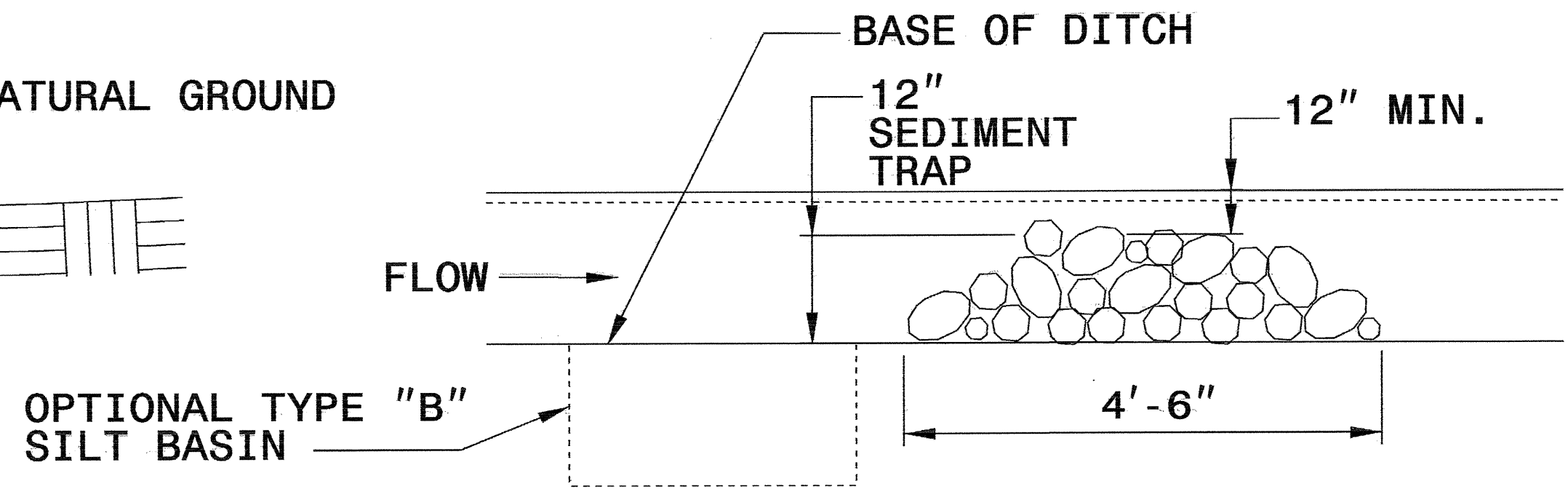
THE ENGINEER MAY DIRECT THE OPTION OF CLASS "A" STONE FOR SITES HAVING LESS THAN ONE (1) ACRE DRAINAGE AREA AND A DITCH GRADE LESS THAN 3%.



CROSS SECTION VEE DITCH



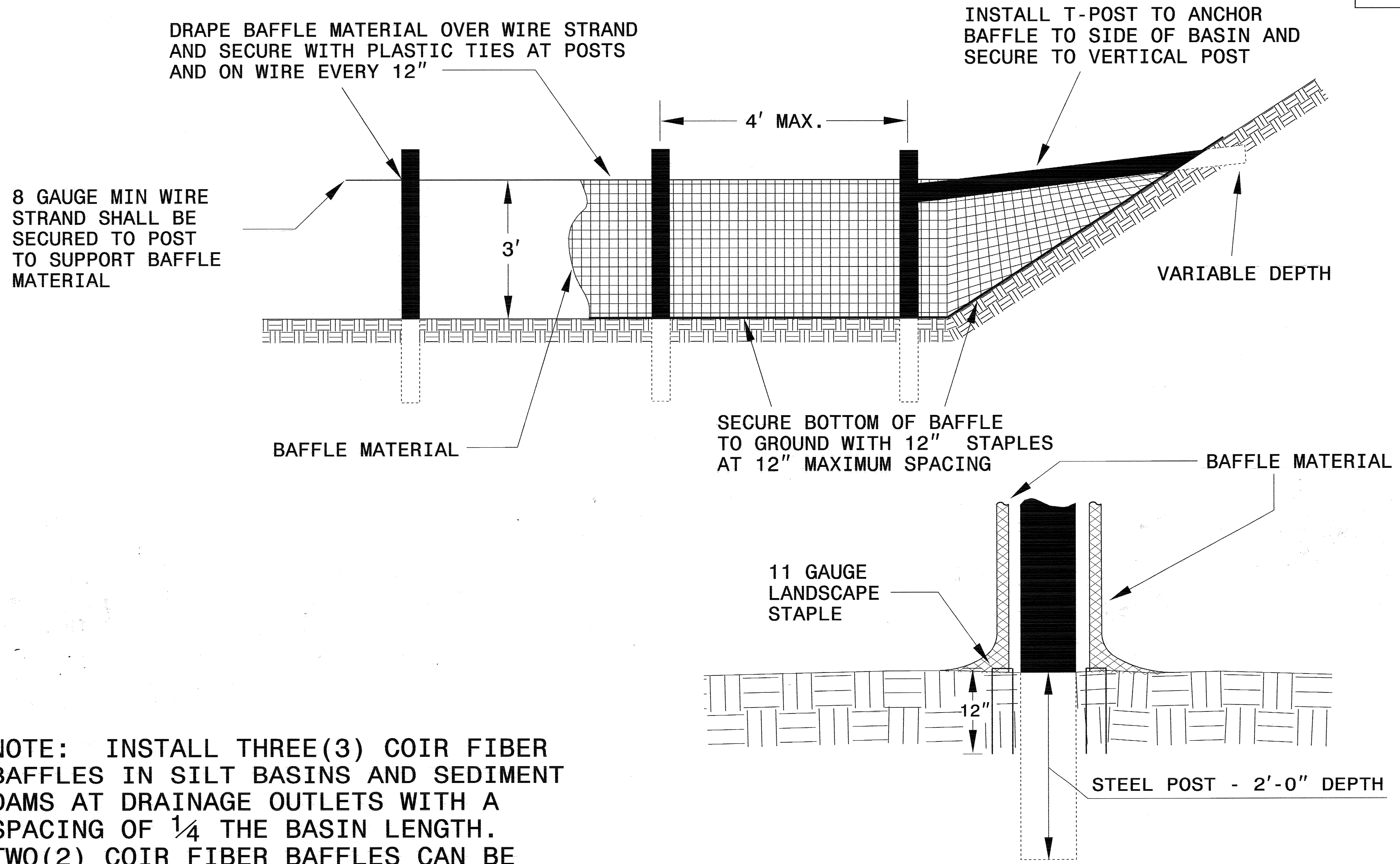
CROSS SECTION TRAPEZOIDAL DITCH



ELEVATION VIEW

PROJECT REFERENCE NO. B-3854	SHEET NO. EC-2A
RW SHEET NO.	
ROADWAY DESIGN ENGINEER	HYDRAULICS ENGINEER

COIR FIBER BAFFLE DETAIL

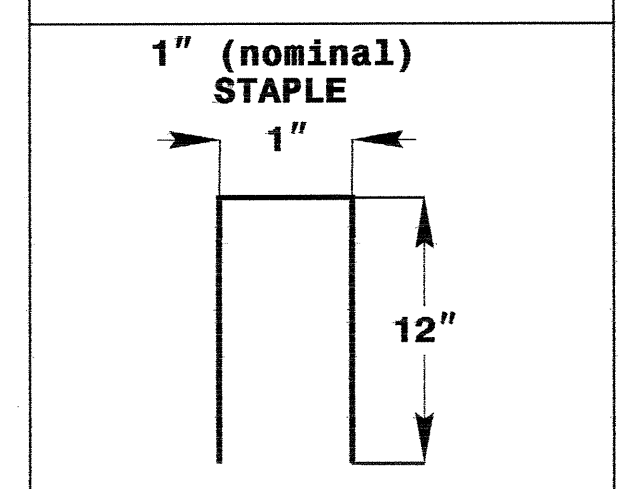
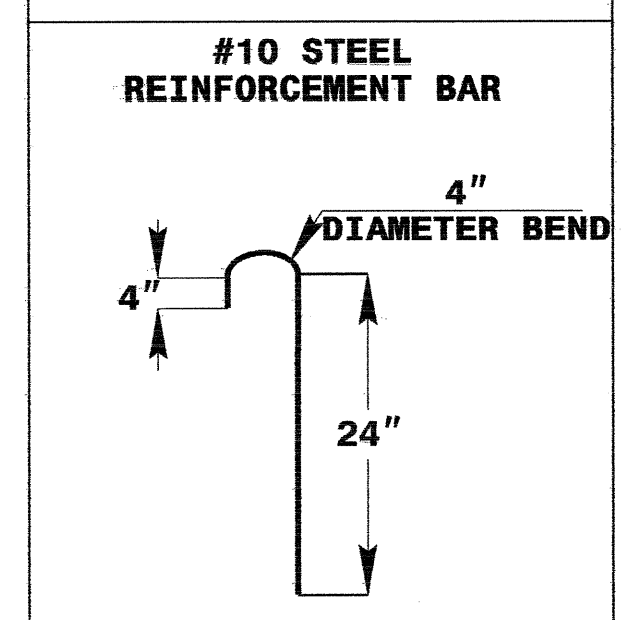
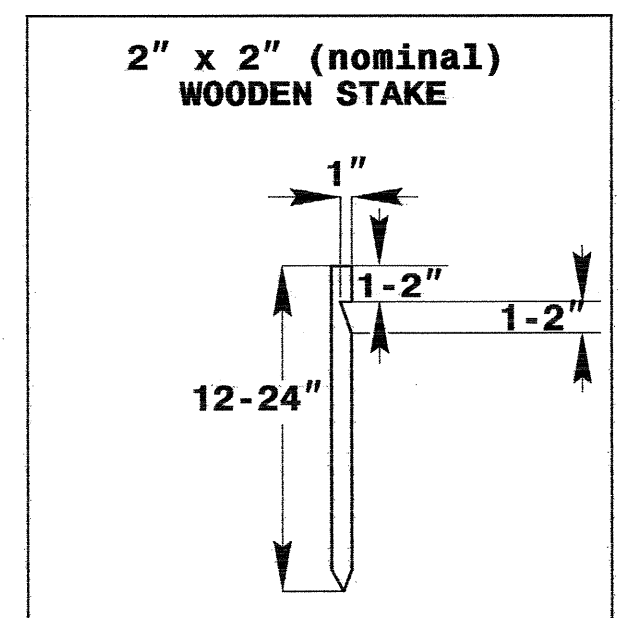
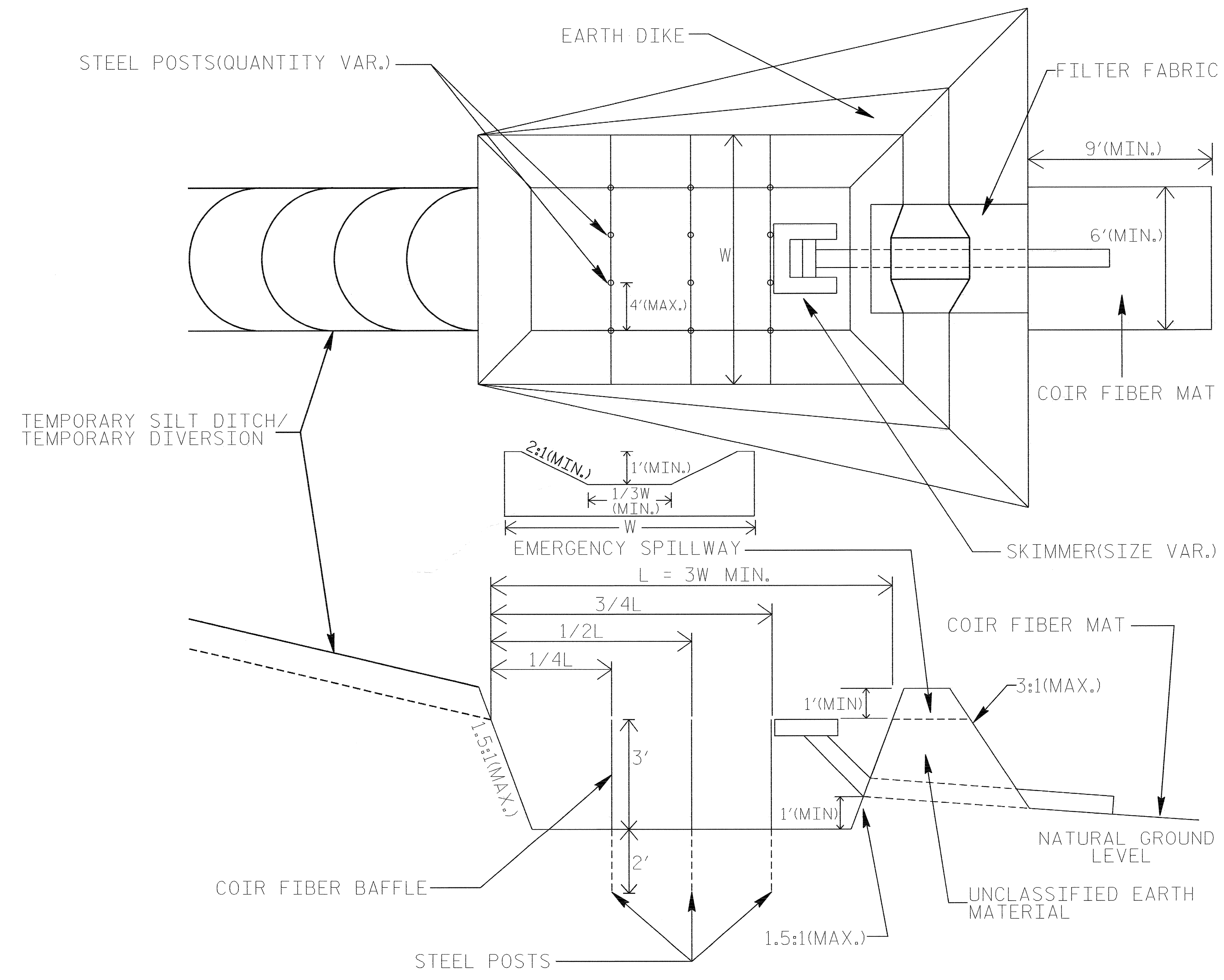


NOTE: INSTALL THREE(3) COIR FIBER BAFFLES IN SILT BASINS AND SEDIMENT DAMS AT DRAINAGE OUTLETS WITH A SPACING OF $\frac{1}{4}$ THE BASIN LENGTH. TWO(2) COIR FIBER BAFFLES CAN BE INSTALLED IN SILT BASINS AND DAMS LESS THAN 20 FT. IN LENGTH WITH A SPACING OF $\frac{1}{3}$ THE BASIN LENGTH.

BAFFLE MATERIAL SHALL BE SECURED TO THE BOTTOM AND SIDES OF BASIN USING 12" LANDSCAPE STAPLES

SKIMMER BASIN WITH BAFFLES DETAIL

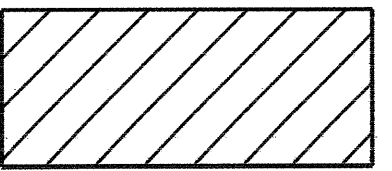
PROJECT REFERENCE NO. B-3854	SHEET NO. EC-2B
RW SHEET NO.	
ROADWAY DESIGN ENGINEER	HYDRAULICS ENGINEER



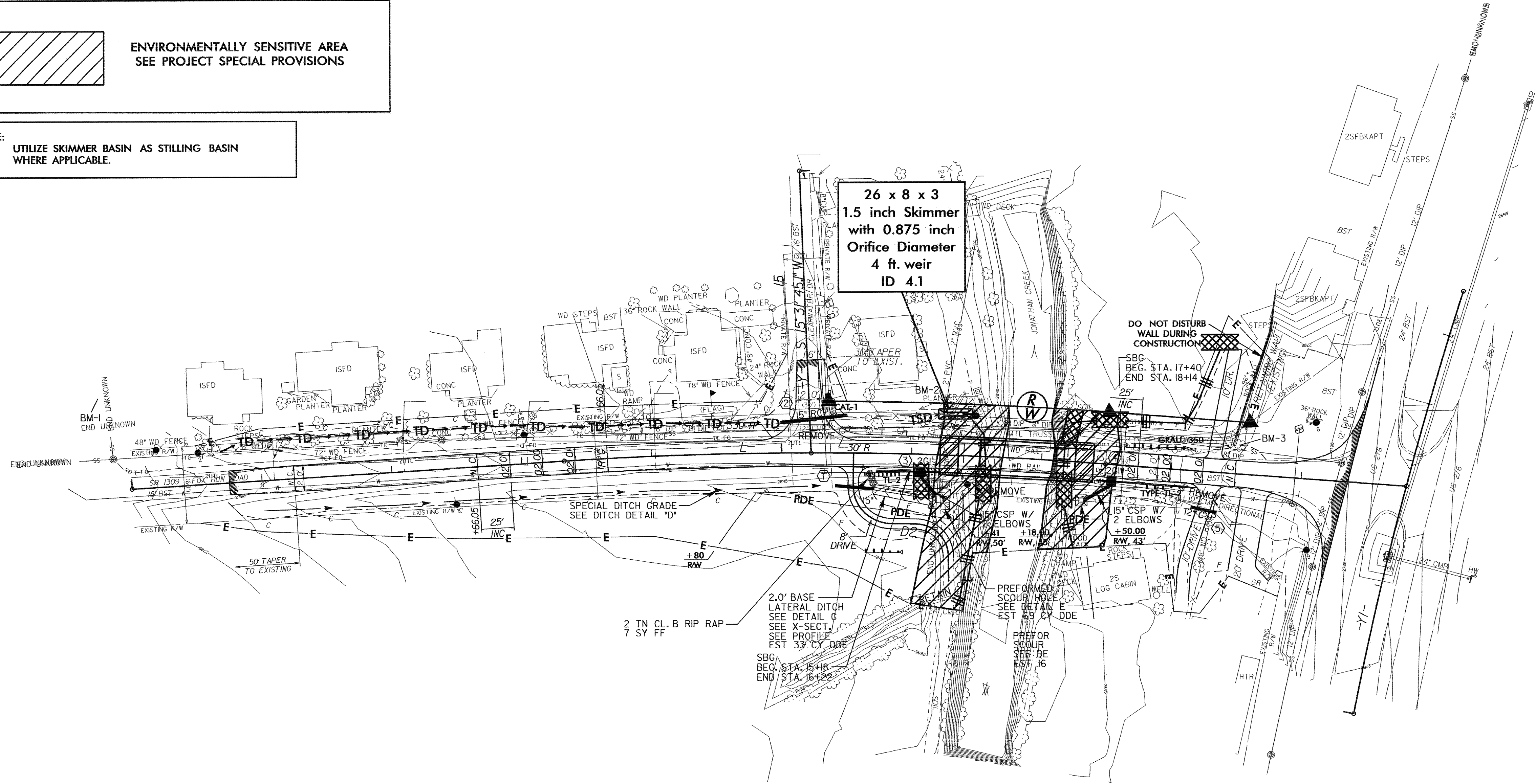
COIR FIBER MAT ANCHOR OPTIONS

CLEARING AND GRUBBING
EROSION CONTROL FOR
CONSTRUCTION SHEET 04

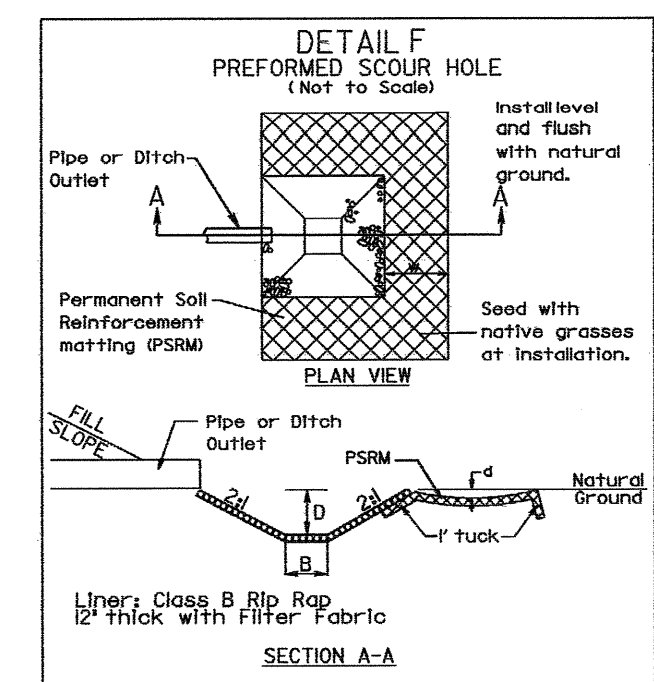
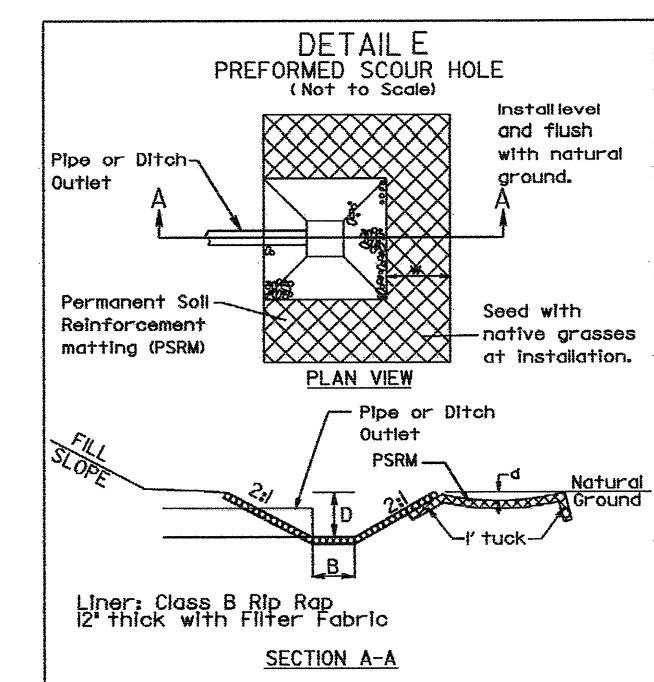
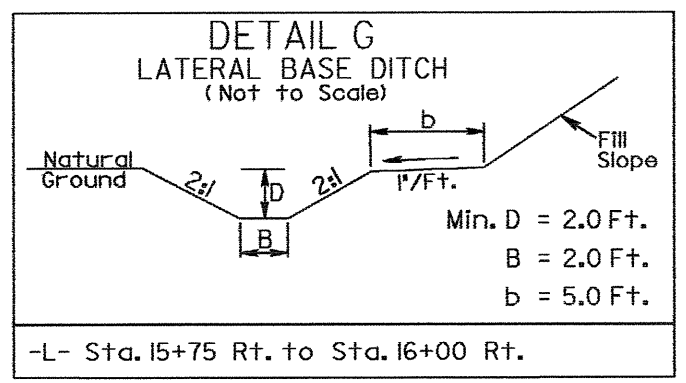
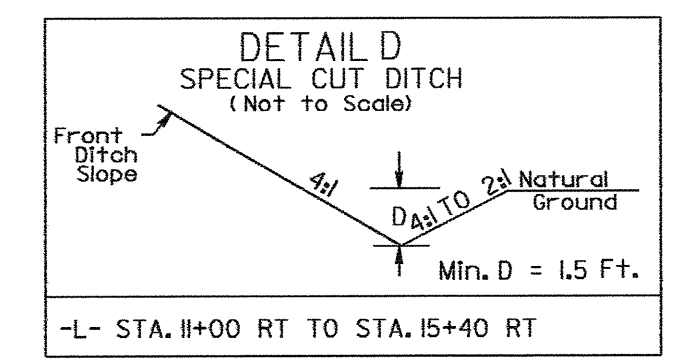
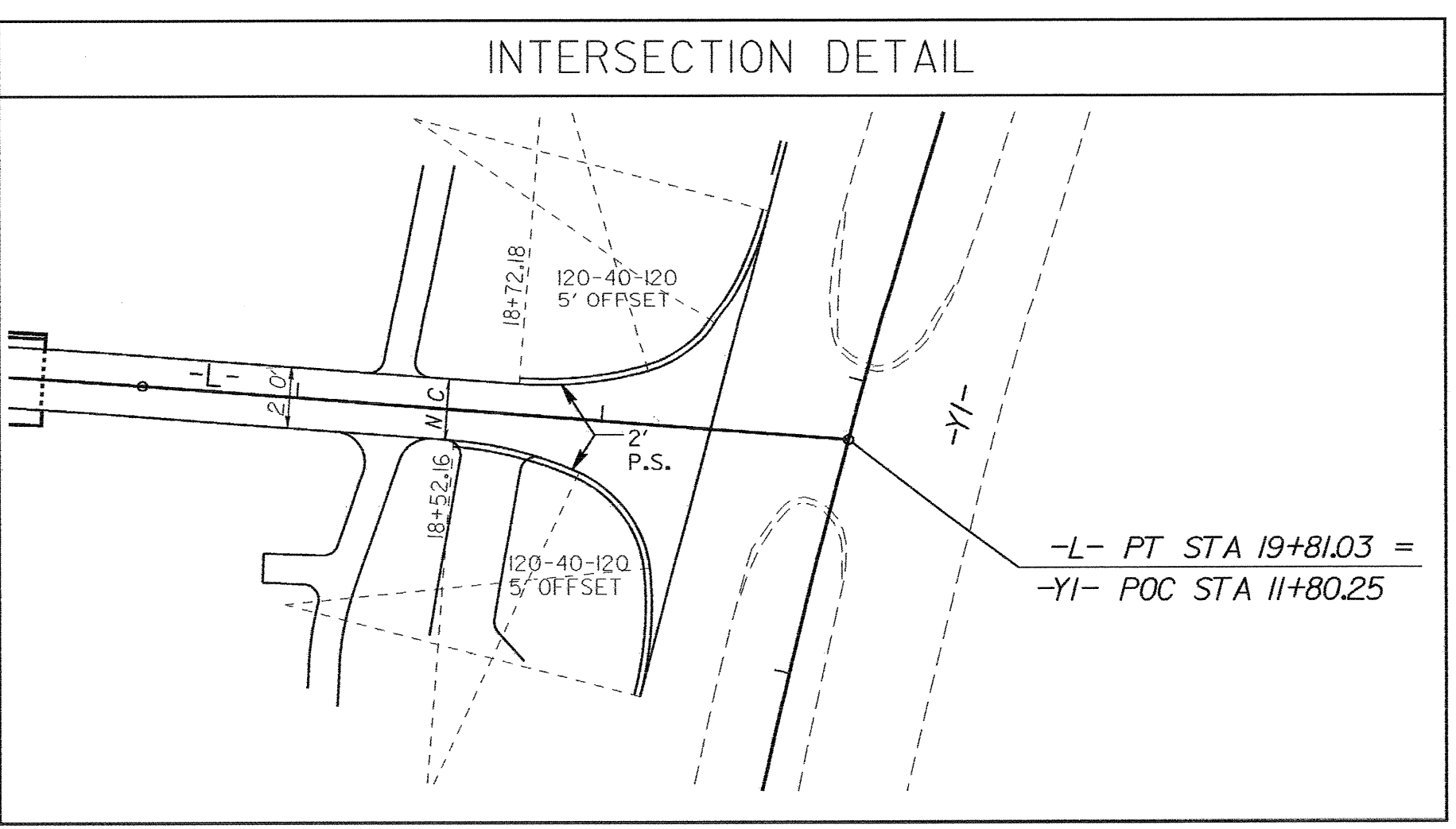
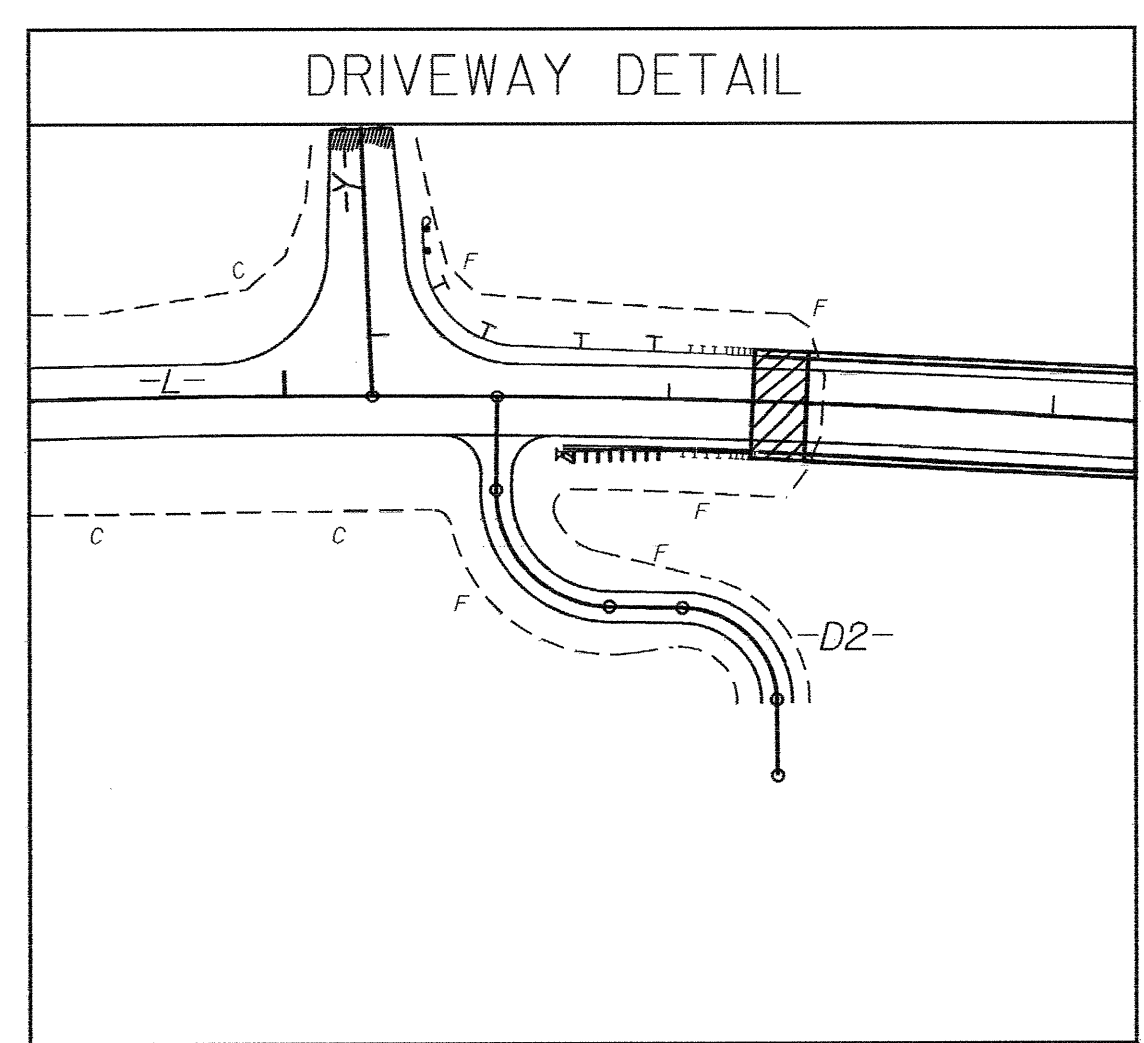
NOTE:
PLACE TEMPORARY ROCK SEDIMENT DAMS TYPE - B
AND TEMPORARY ROCK SILT CHECKS TYPE - A AT
DRAINAGE OUTLETS.

 ENVIRONMENTALLY SENSITIVE AREA
SEE PROJECT SPECIAL PROVISIONS

NOTE:
UTILIZE SKIMMER BASIN AS STILLING BASIN
WHERE APPLICABLE.



REVISIONS



NOTES
1. Sanitary sewer line will not be disturbed in the entire project area. Measures were taken to avoid conflicts. The existing sewer line is very shallow in places, probably due to rock in the area. The line is also carried by a pipe bridge across the creek.

 DENOTES APPROACH SLAB

NOTE: SEE SHEET 2A FOR -LDET- DETAIL
SEE SHEET 2A FOR -DI- DETAIL
SEE SHEET 5 FOR -L- PROFILE
SEE SHEET 5 FOR -Y- PROFILE
SEE SHEET 5 FOR -D2- PROFILE

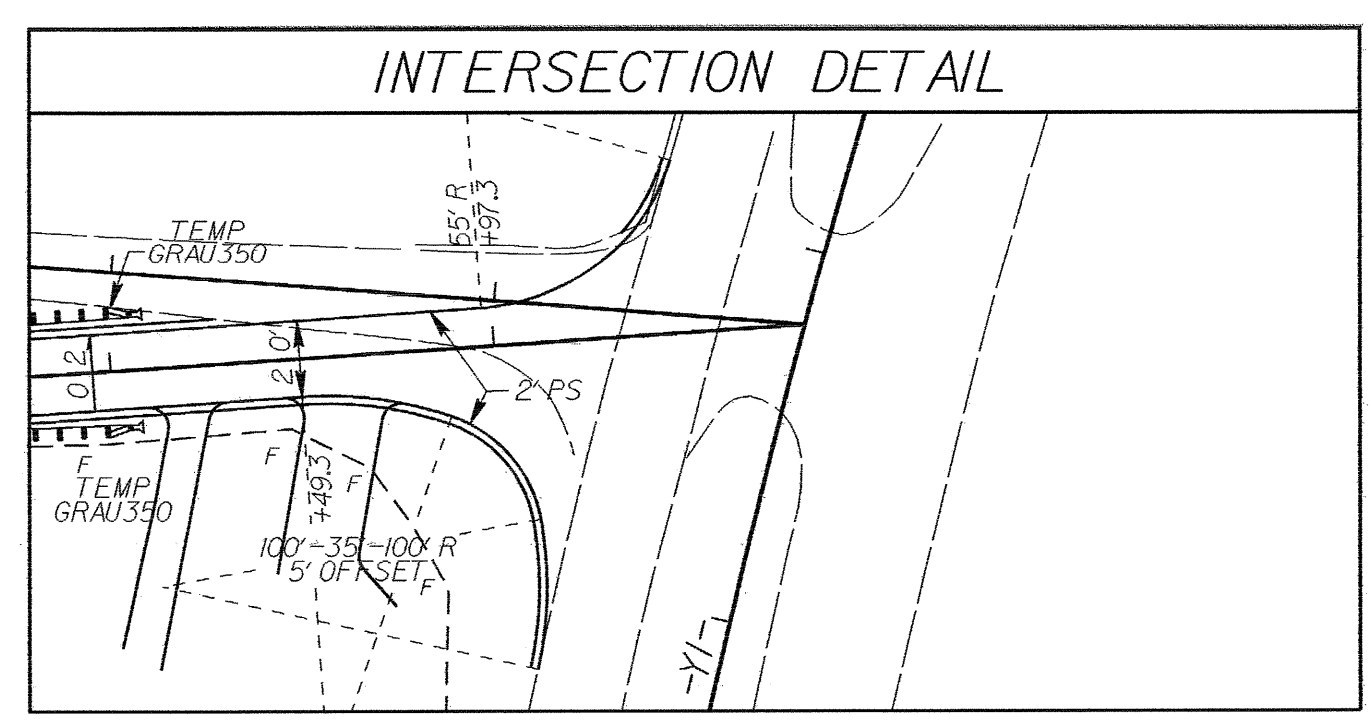
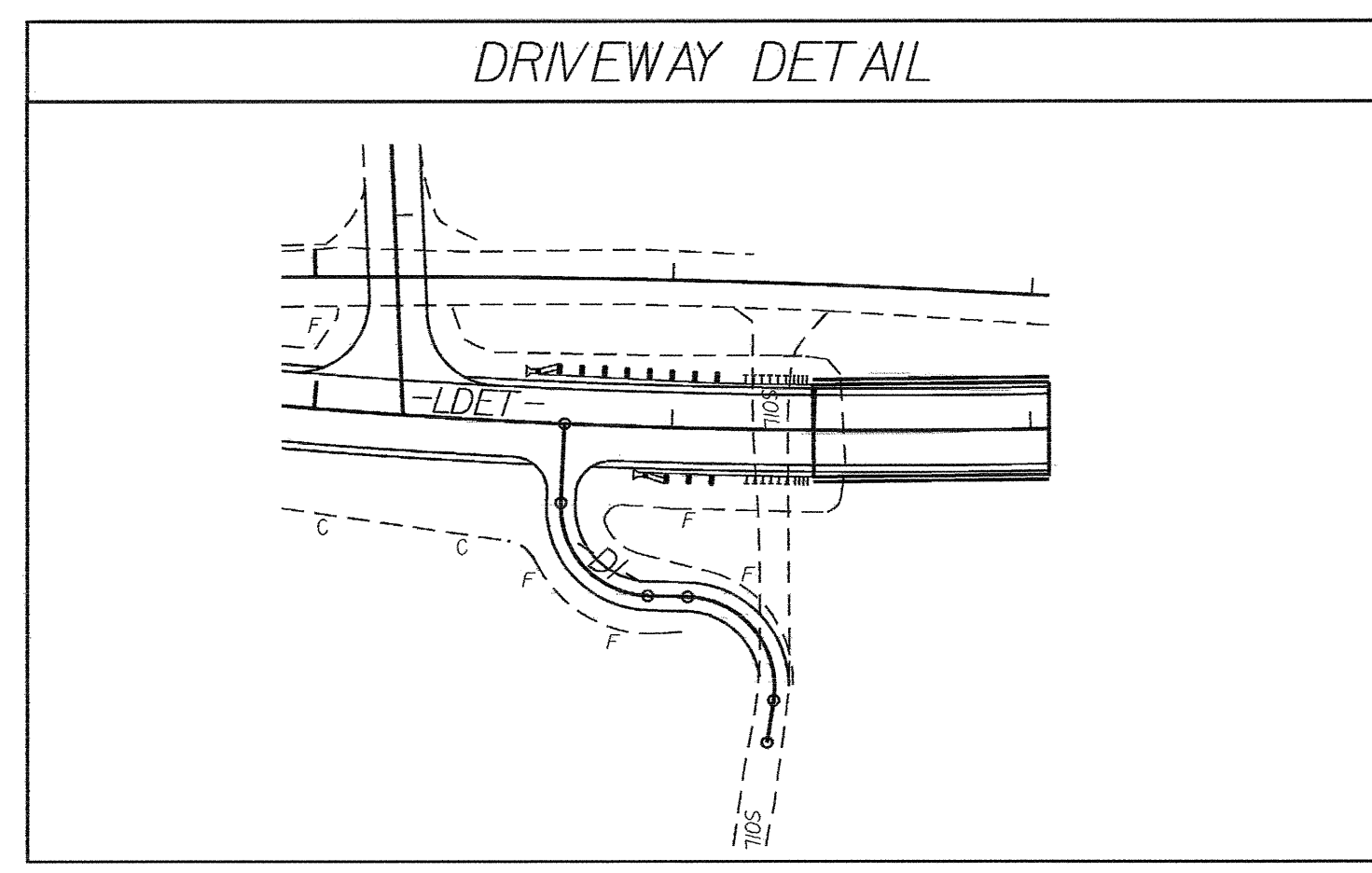
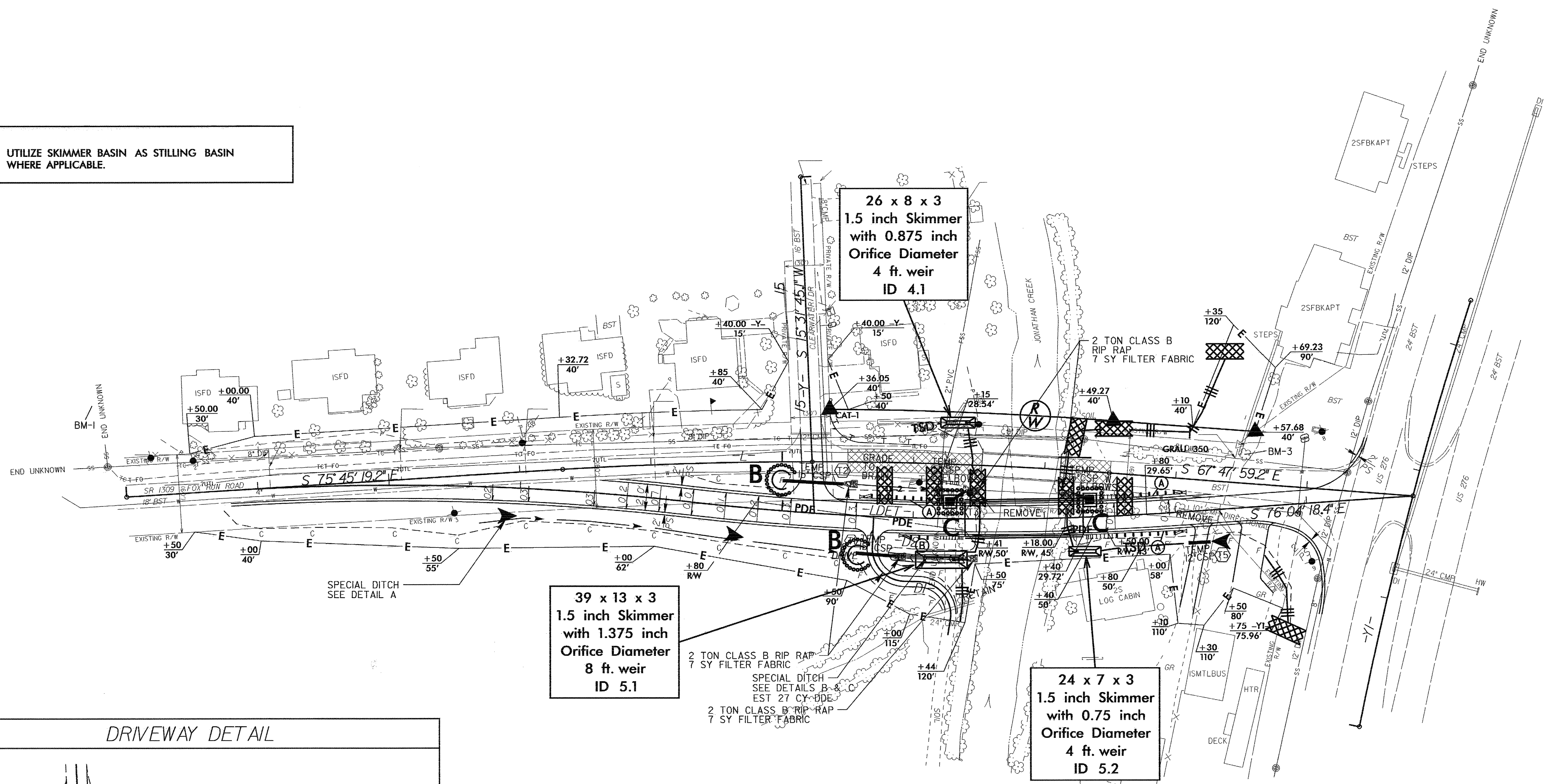
03-JUL-2007 16:09
at:\projects\3854\environmental\design\3854.ec.dsn_psh.dgn
160001101 AT: RENV221500

PROJECT REFERENCE NO.	SHEET NO.
B-3854	EC-05/CONST.2A
R/W SHEET NO.	
ROADWAY DESIGN ENGINEER	HYDRAULICS ENGINEER

DETOUR DETAIL

NOTE: PLACE TEMPORARY ROCK SEDIMENT DAMS TYPE - B AND TEMPORARY ROCK SILT CHECKS TYPE - A AT DRAINAGE OUTLETS.

NOTE: UTILIZE SKIMMER BASIN AS STILLING BASIN WHERE APPLICABLE.



- (A) TEMPORARY GUARDRAIL W/ TEMP GRAU 350 & TEMP B-77 ANCHORS
- (B) TEMPORARY GUARDRAIL W/ TEMP TL-2 & TEMP B-77 ANCHOR

DETOUR BRIDGE
 BEGIN BRIDGE -LDET- STA 16+38.00
 END BRIDGE -LDET- STA 17+23.00

DENOTES PAVEMENT REMOVAL

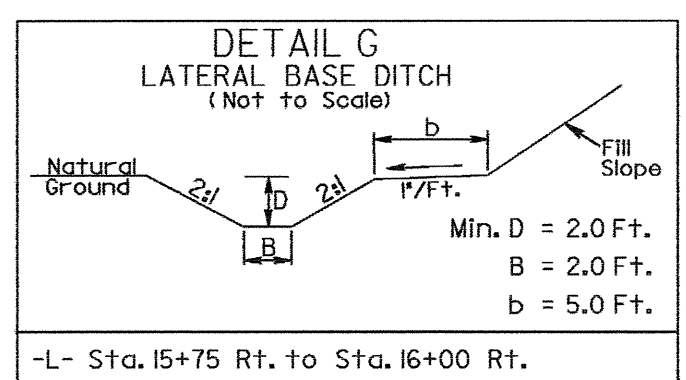
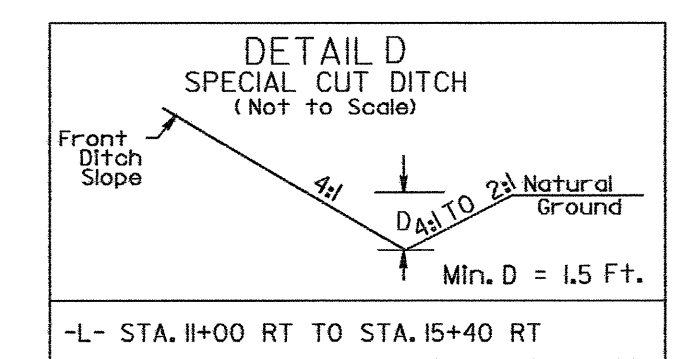
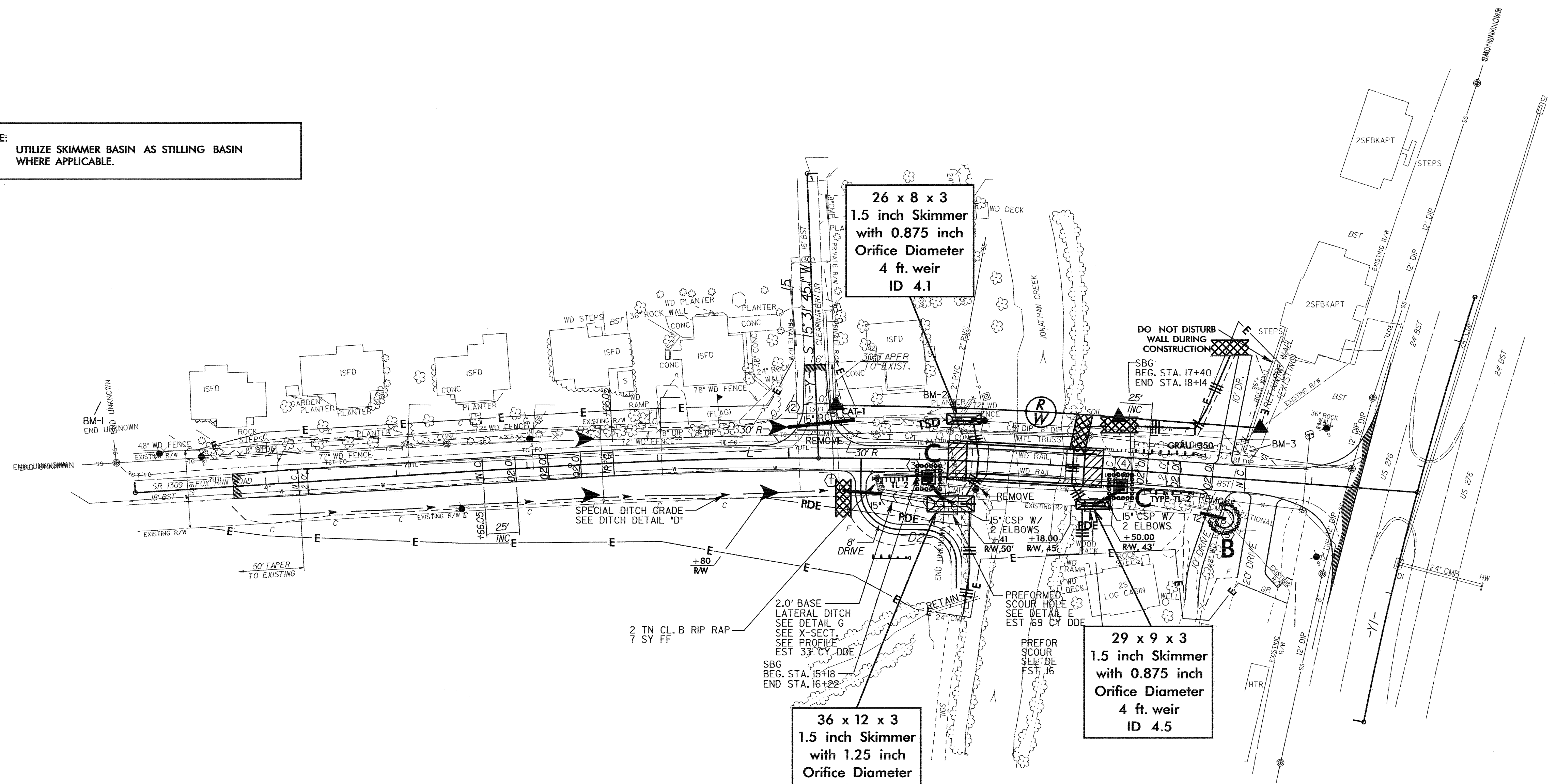
NOTE: SEE SHEET 6 FOR -LDET- & -DI- PROFILE
 SEE SHEET 4 FOR -L- PLAN VIEW
 SEE SHEET 5 FOR -Y- PROFILE

REVISIONS

03-JUL-2007 16:03
 g:\hpc\projects\3854\environmental\design\3854.ec.dsm-pshde\dgn
 3854.ec.dsm-pshde\dgn

PROJECT REFERENCE NO.		SHEET NO.	
B-3854		EC-06/CONST.04	
RW SHEET NO.			
ROADWAY DESIGN ENGINEER		HYDRAULICS ENGINEER	

NOTE:
UTILIZE SKIMMER BASIN AS STILLING BASIN
WHERE APPLICABLE.

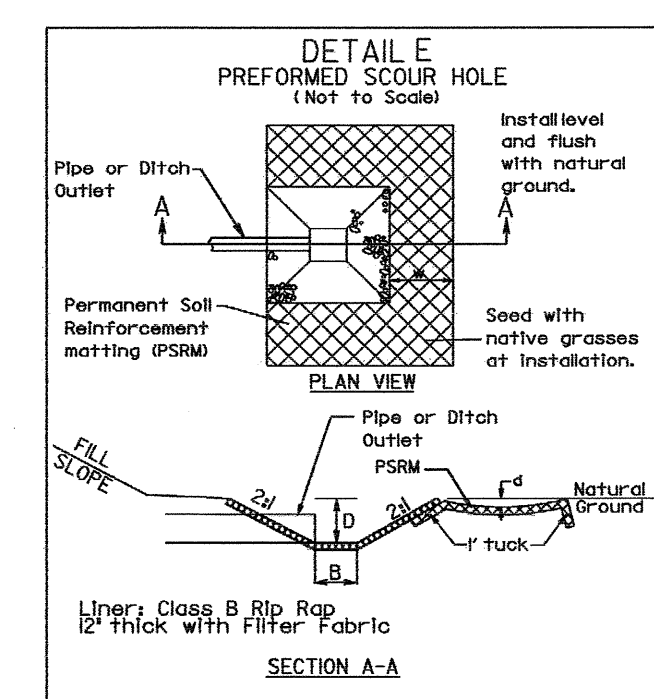
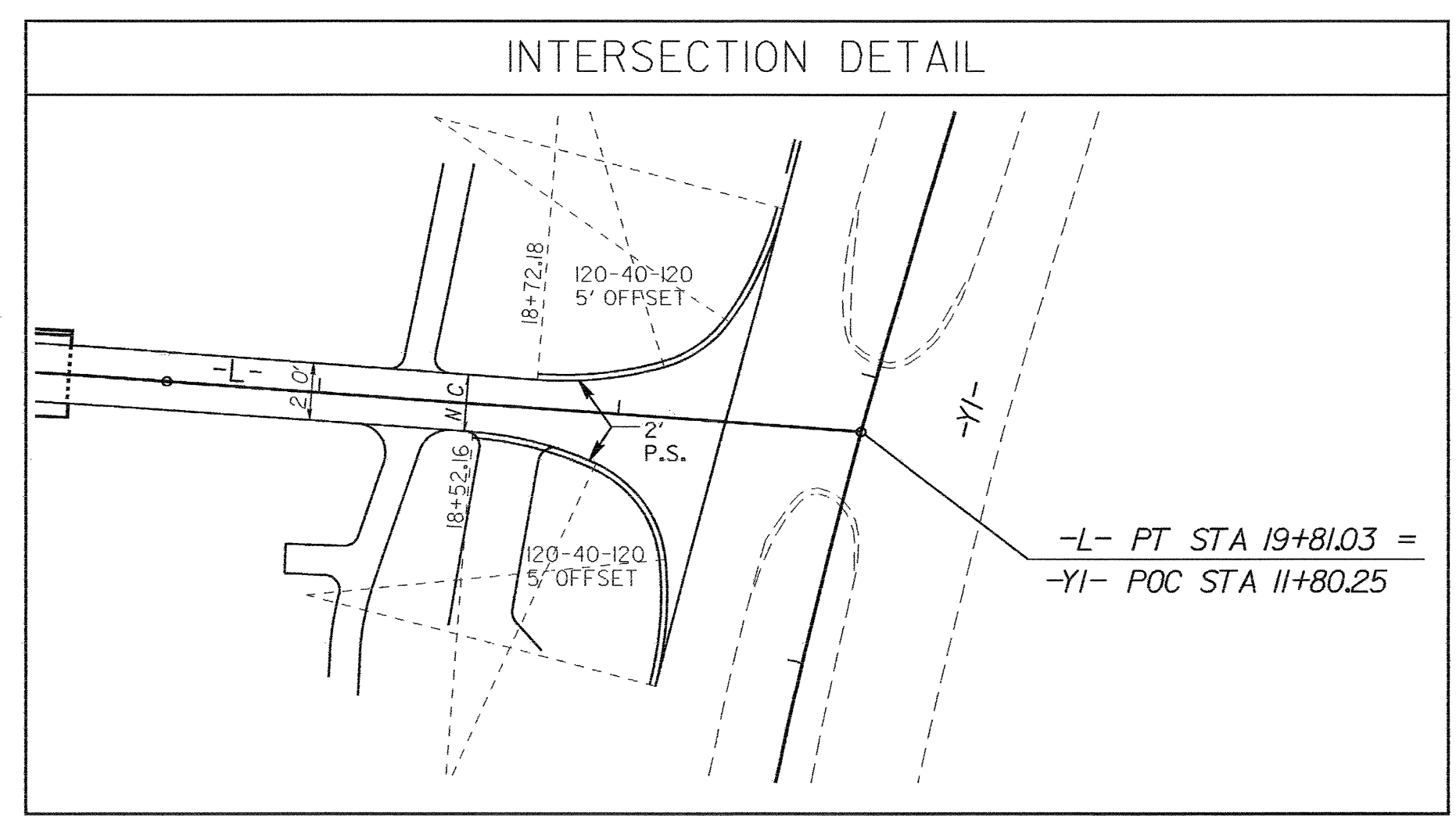
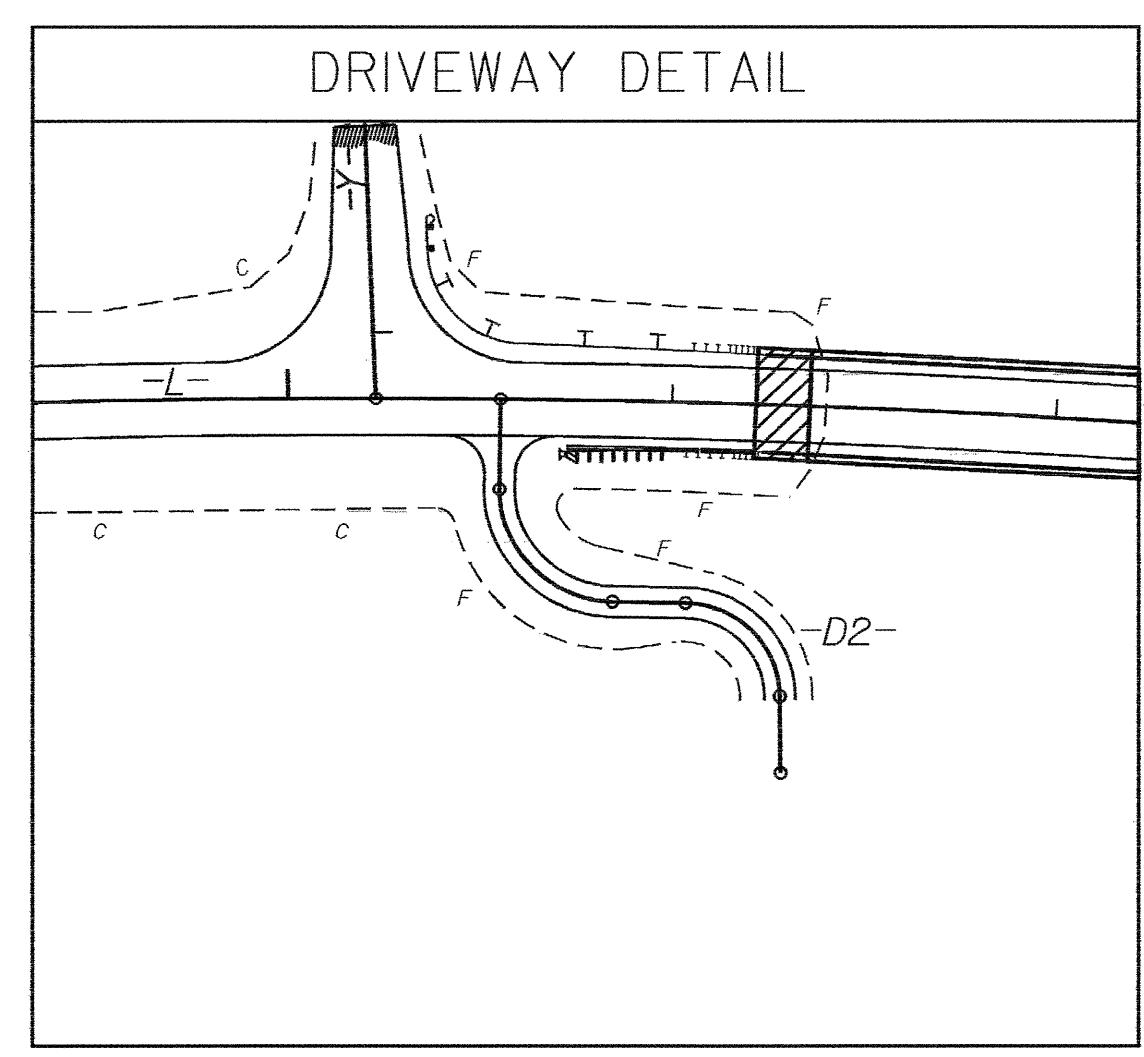


NOTES

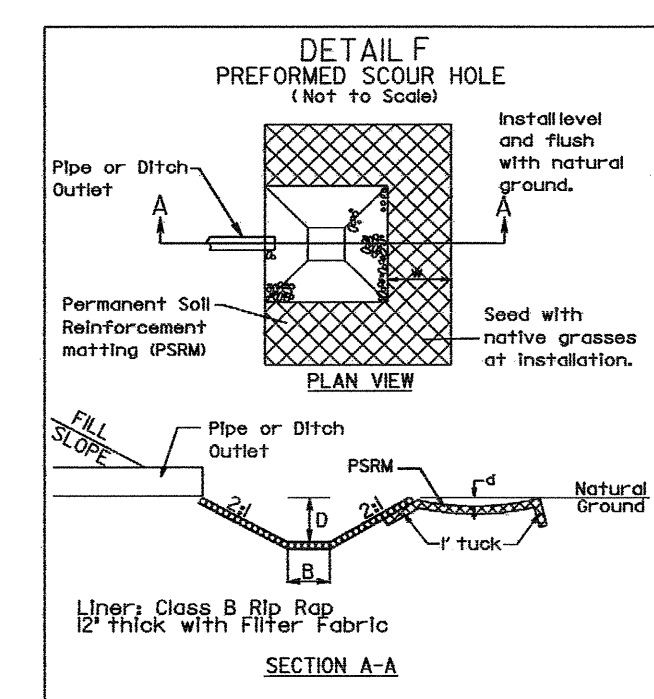
1. Sanitary sewer line will not be disturbed in the entire project area. Measures were taken to avoid conflicts. The existing sewer line is very shallow in places, probably due to rock in the area. The line is also carried by a pipe bridge across the creek.

DENOTES APPROACH SLAB

NOTE: SEE SHEET 2A FOR -LDET- DETAIL
SEE SHEET 2A FOR -DI- DETAIL
SEE SHEET 5 FOR -L- PROFILE
SEE SHEET 5 FOR -Y- PROFILE
SEE SHEET 5 FOR -D2- PROFILE



STATION	B	D	d	W	STONE	FF
-L- 16+07 RT	6.0'	2.5'	0.5'	4.0'	14.0 TONS	31SY



STATION	B	D	d	W	STONE	FF
-L- 17+40 RT	3.75'	1.25'	0.5'	4.0'	4.2 TONS	10 SY

REVISIONS

03-JUL-2007 16:08
g:\twp\p2\ec\3854\environmental\des\gn\h-3854_ec_dsn_psh.dgn
15:00
AT: RENV221500