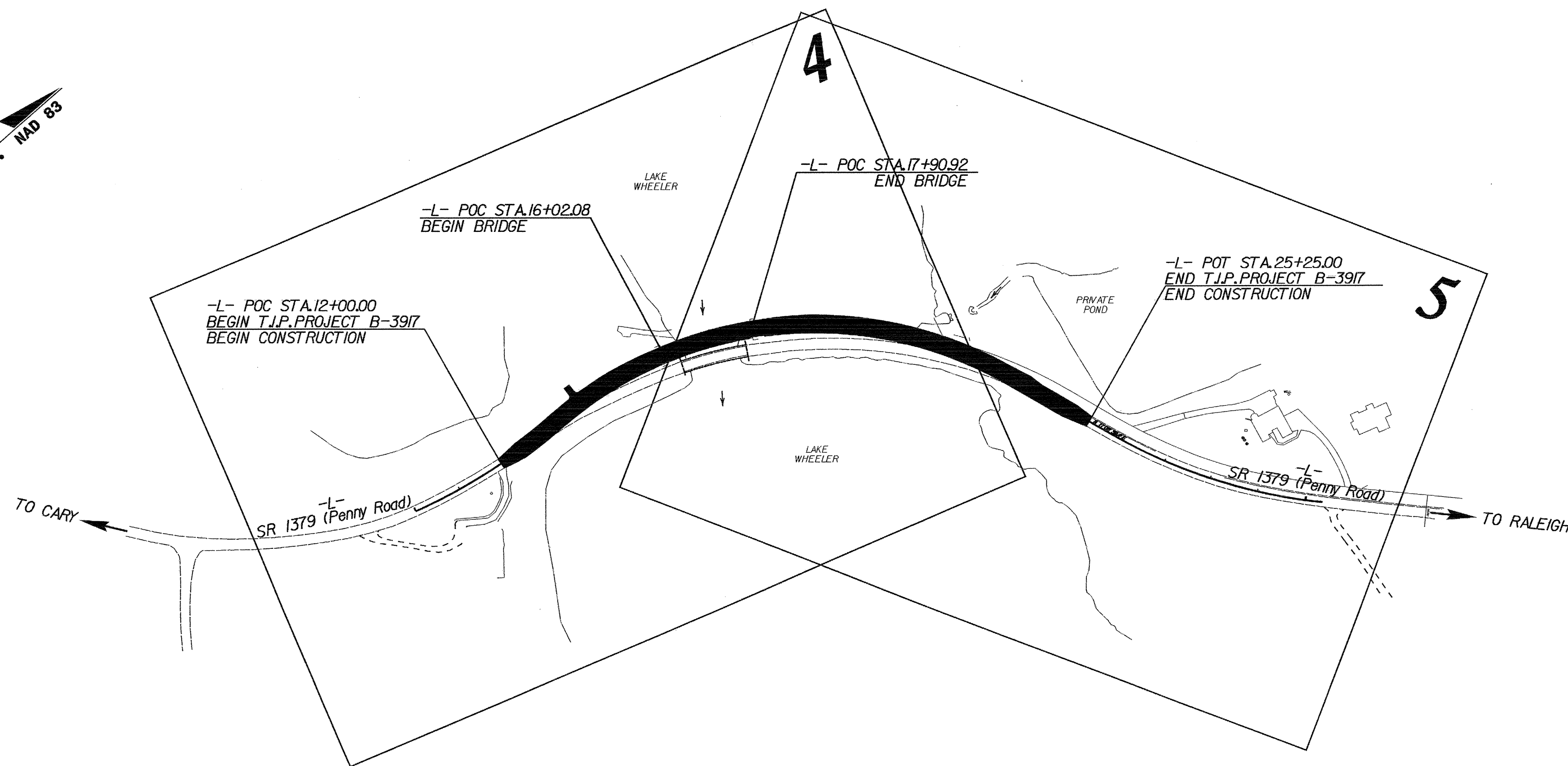
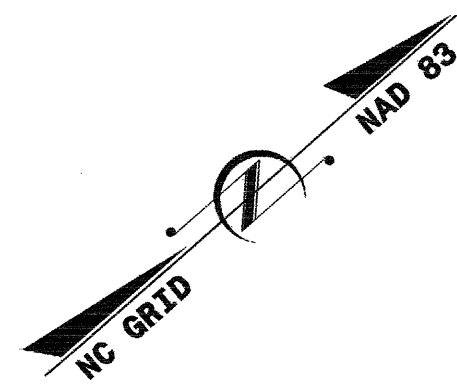


**TIP PROJECT: B-3917**

STATE OF NORTH CAROLINA  
 DIVISION OF HIGHWAYS  
 PLAN FOR PROPOSED  
 HIGHWAY EROSION CONTROL  
 WAKE COUNTY

**LOCATION: BRIDGE NO. 311 OVER LAKE WHEELER (SWIFT CREEK)  
 ON SR 1379 (PENNY ROAD)**

**TYPE OF WORK: GRADING, DRAINAGE, PAVING, AND STRUCTURES**



STATE	STATE PROJECT REFERENCE NO.	SHEET NO.	TOTAL SHEETS
N.C.	B-3917	EC-1	
STATE PROJ. NO.	F.A. PROJ. NO.	DESCRIPTION	

**EROSION AND SEDIMENT CONTROL MEASURES**

Std. #	Description	Symbol
	Streambank Reforestation	
1650.05	Temporary Silt Ditch	
1630.05	Temporary Diversion	
1605.01	Temporary Silt Fence	
1606.01	Special Sediment Control Fence	
1622.01	Temporary Berms and Slope Drains	
1630.01	Riser Basin	
1630.02	Silt Basin Type B	
1633.01	Temporary Rock Silt Check Type-A	
	Temporary Rock Silt Check Type-B	
1634.01	Temporary Rock Sediment Dam Type-A	
1634.02	Temporary Rock Sediment Dam Type-B	
1635.01	Rock Pipe Inlet Sediment Trap Type-A	
1635.02	Rock Pipe Inlet Sediment Trap Type-B	
1630.04	Stilling Basin	
	Rock Inlet Sediment Trap:	
1632.01	Type A	
1632.02	Type B	
1632.03	Type C	
	Skimmer Basin	
	Tiered Skimmer Basin	

**THIS PROJECT CONTAINS  
 EROSION CONTROL PLANS  
 FOR CLEARING AND  
 GRUBBING PHASE OF  
 CONSTRUCTION.**

**THIS PROJECT HAS  
 BEEN DESIGNED TO  
 SENSITIVE WATERSHED  
 STANDARDS.**

**ENVIRONMENTALLY  
 SENSITIVE AREA(S) EXIST  
 ON THIS PROJECT**  
*Refer To E. C. Special Provisions  
 for Special Considerations.*

**GRAPHIC SCALE**

0

PLANS

0

PROFILE (HORIZONTAL)

0

PROFILE (VERTICAL)

ROADSIDE ENVIRONMENTAL UNIT  
 DIVISION OF HIGHWAYS  
 STATE OF NORTH CAROLINA

Prepared In the Office of:  
**ROADSIDE ENVIRONMENTAL UNIT**  
 1 South Wilmington St.  
 Raleigh, NC 27611  
**2006 STANDARD SPECIFICATIONS**

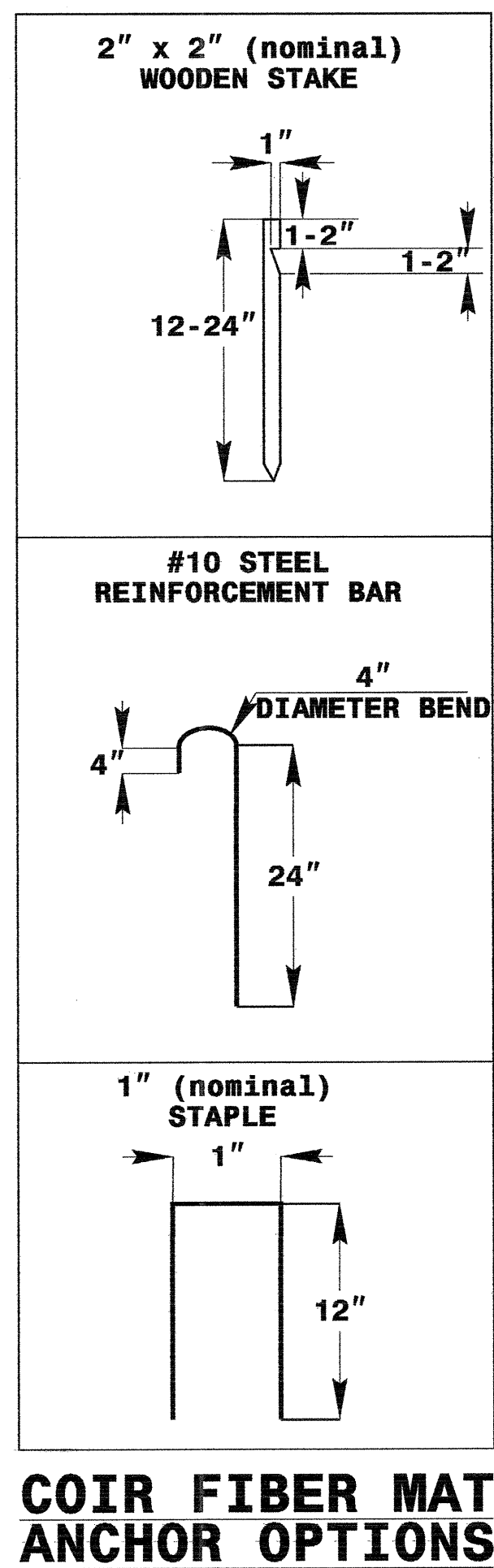
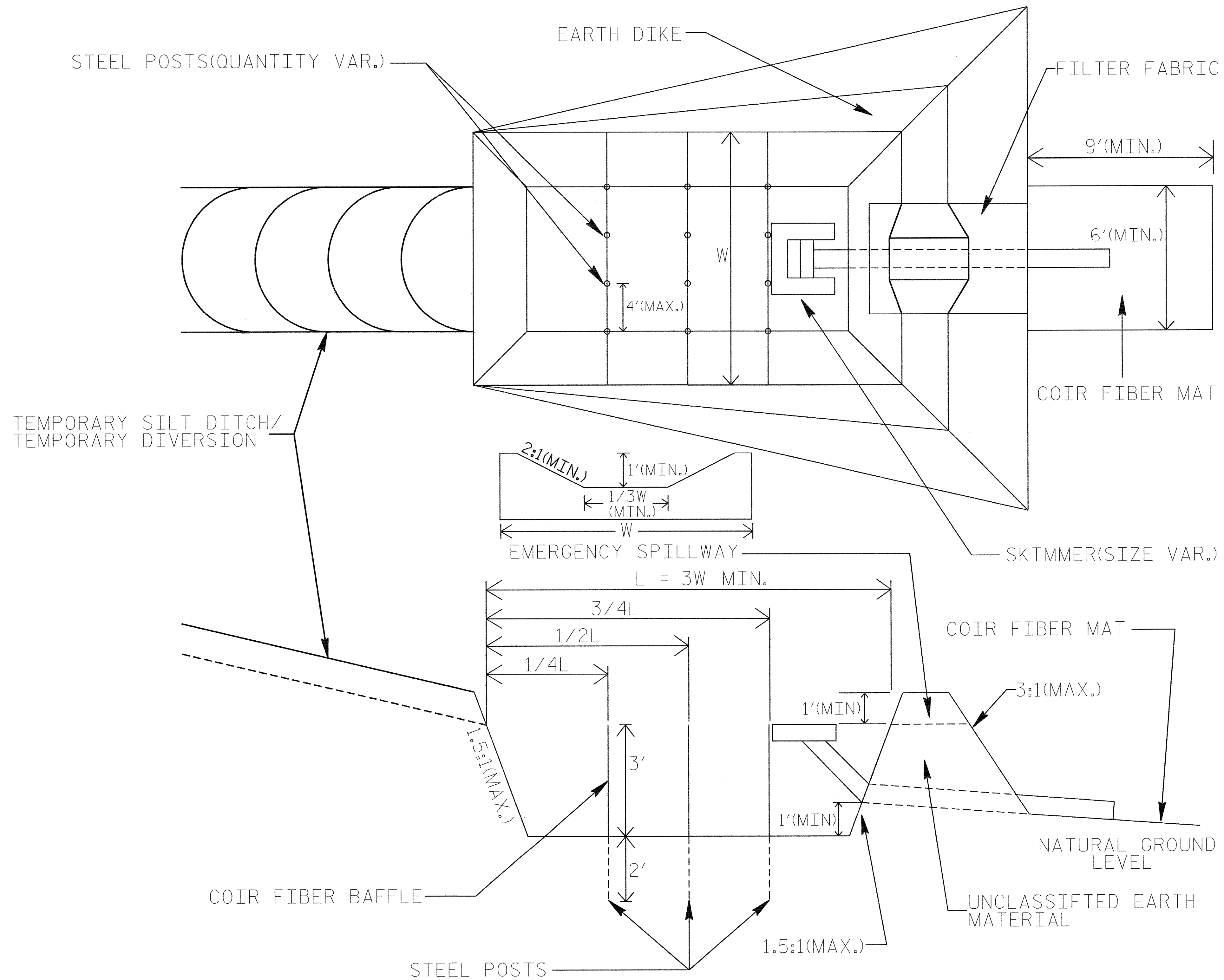
Roadway Standard Drawings

The following roadway english standards as appear in "Roadway Standard Drawings"- Roadway Design Unit - N. C. Department of Transportation - Raleigh, N. C., dated July 18, 2006 and the latest revision thereto are applicable to this project and by reference hereby are considered a part of these plans.

1605.01 Temporary Silt Fence	1630.06 Special Stilling Basin
1606.01 Special Sediment Control Fence	1632.03 Rock Inlet Sediment Trap Type C
1607.01 Gravel Construction Entrance	1633.01 Temporary Rock Silt Check Type A
1630.03 Temporary Silt Ditch	1634.02 Temporary Rock Sediment Dam Type B

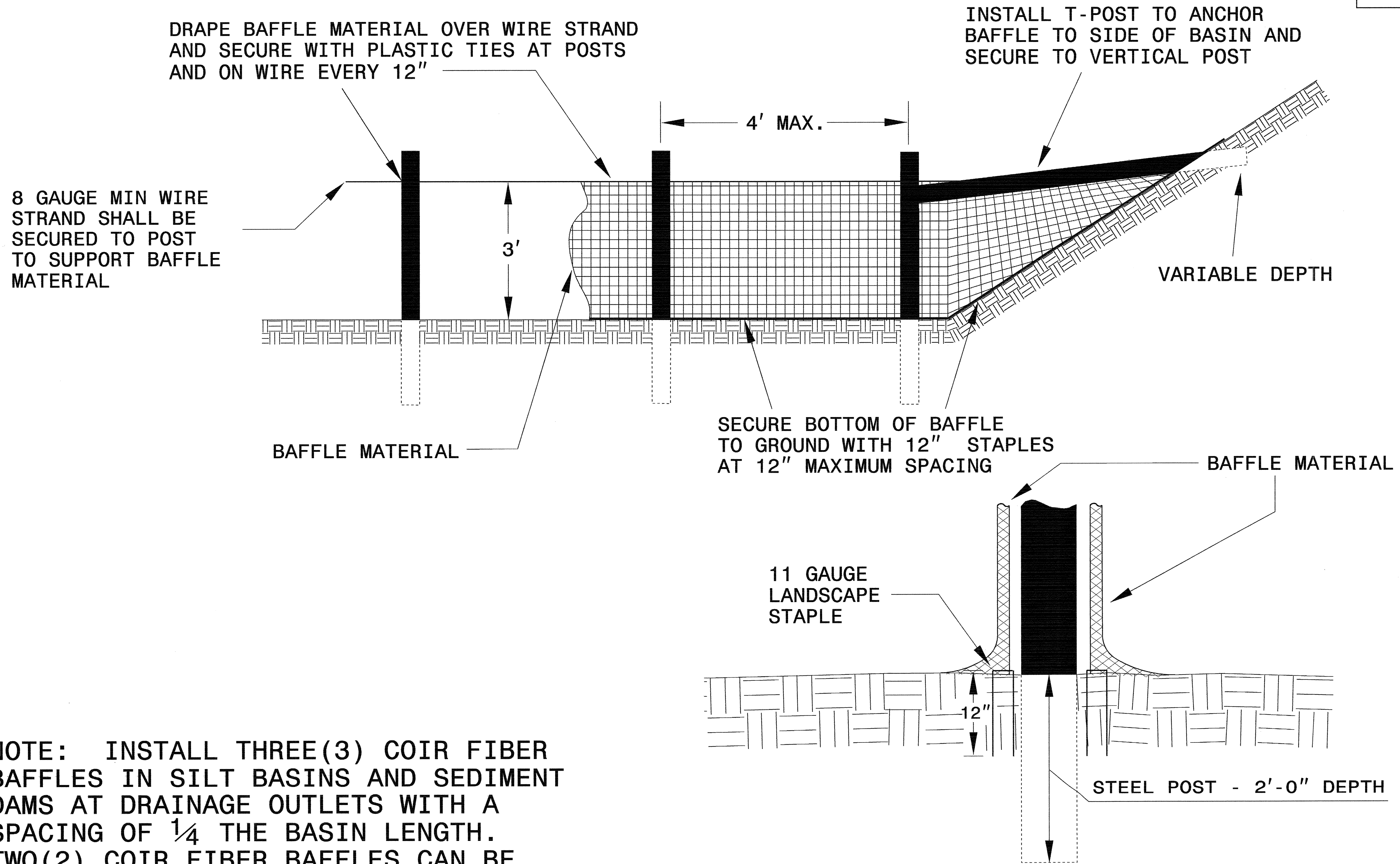
# SKIMMER BASIN WITH BAFFLES DETAIL

PROJECT REFERENCE NO. B-3917	SHEET NO. EC-2
R/W SHEET NO.	
ROADWAY DESIGN ENGINEER	HYDRAULICS ENGINEER



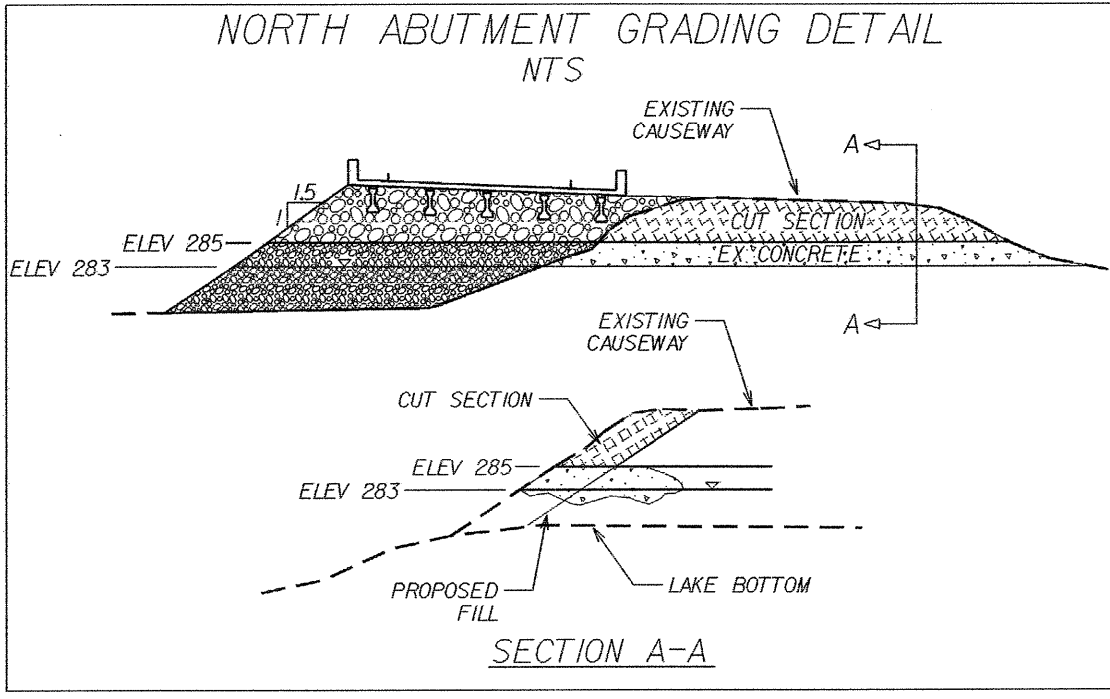
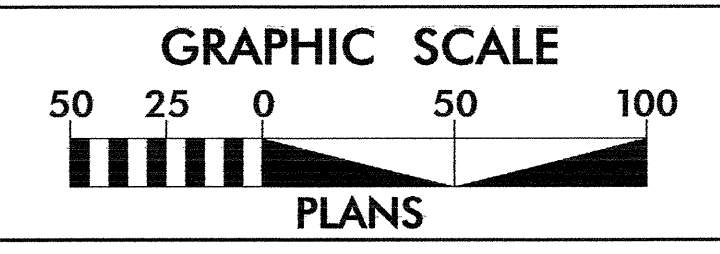
PROJECT REFERENCE NO. B-3917	SHEET NO. EC-3
RW SHEET NO.	
ROADWAY DESIGN ENGINEER	HYDRAULICS ENGINEER

# COIR FIBER BAFFLE DETAIL



NOTE: INSTALL THREE(3) COIR FIBER BAFFLES IN SILT BASINS AND SEDIMENT DAMS AT DRAINAGE OUTLETS WITH A SPACING OF  $\frac{1}{4}$  THE BASIN LENGTH. TWO(2) COIR FIBER BAFFLES CAN BE INSTALLED IN SILT BASINS AND DAMS LESS THAN 20 FT. IN LENGTH WITH A SPACING OF  $\frac{1}{3}$  THE BASIN LENGTH.

BAFFLE MATERIAL SHALL BE SECURED TO THE BOTTOM AND SIDES OF BASIN USING 12" LANDSCAPE STAPLES

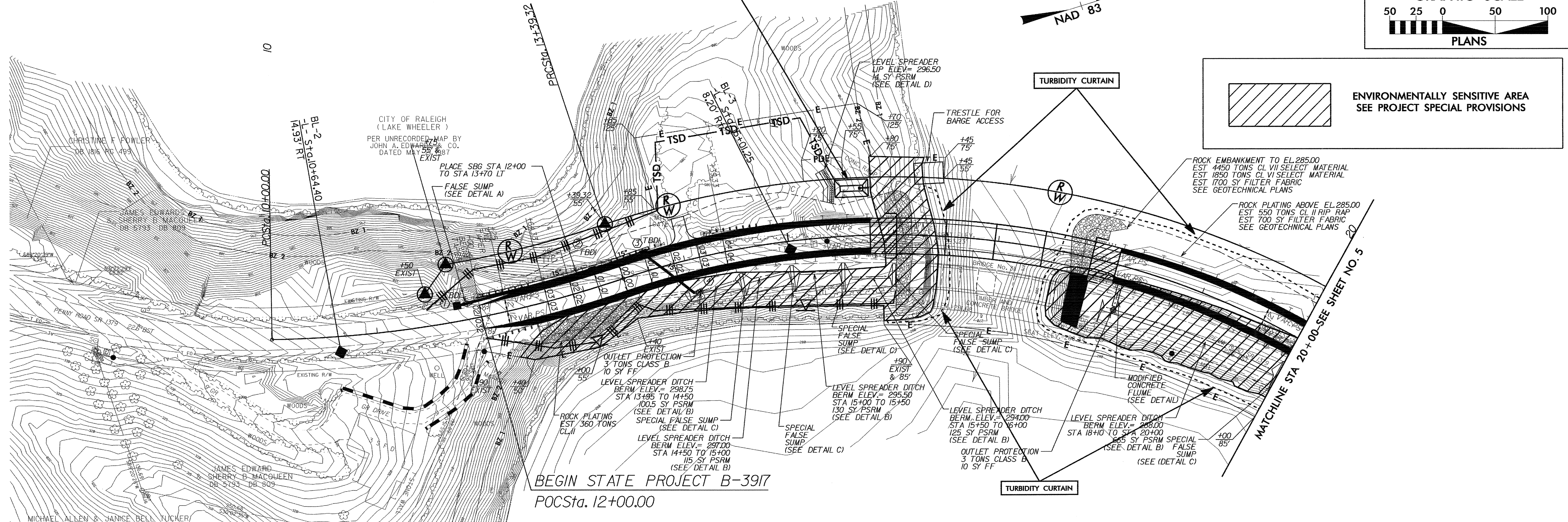


NOTE: UTILIZE SPECIAL STILLING BASIN AND/OR SKIMMER BASIN AS STILLING BASIN WHERE APPLICABLE.

NOTE: PLACE TEMPORARY ROCK SEDIMENT DAMS TYPE - B AND TEMPORARY ROCK SILT CHECKS TYPE - A AT DRAINAGE OUTLETS.

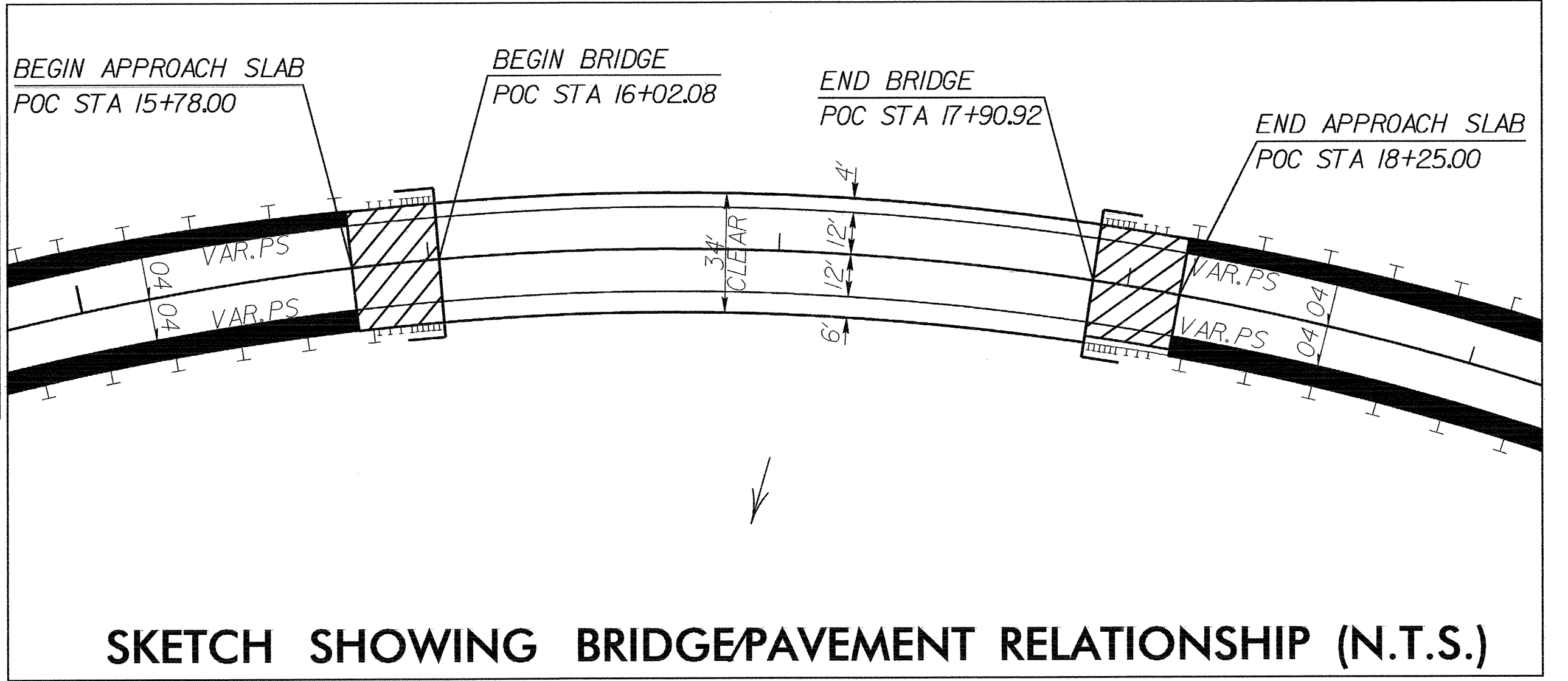
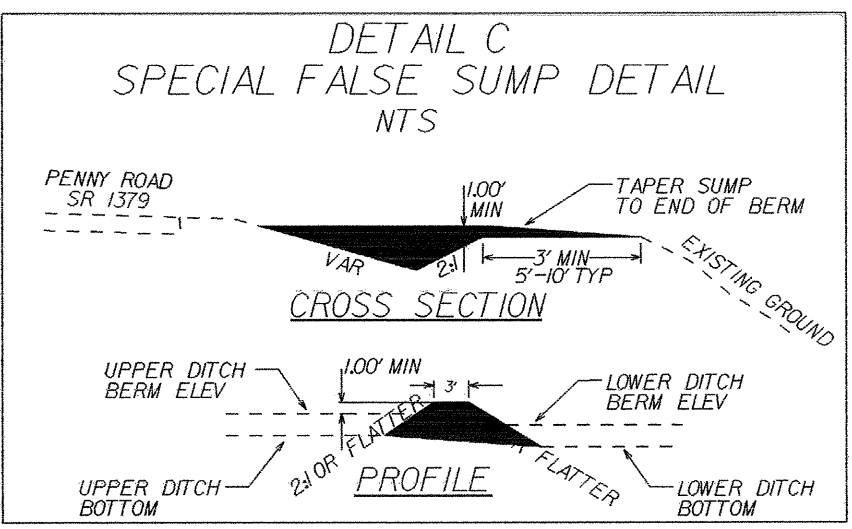
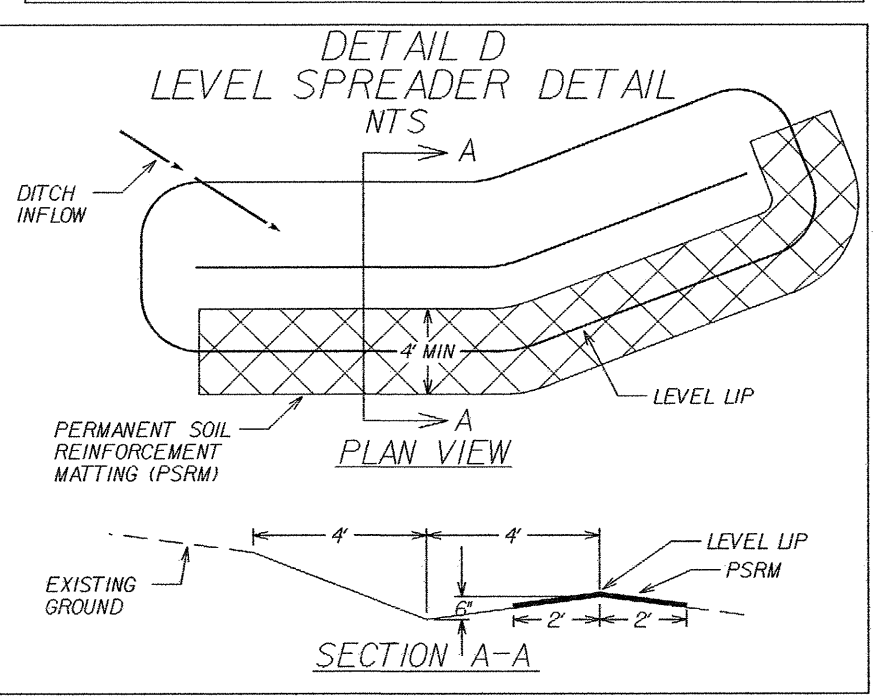
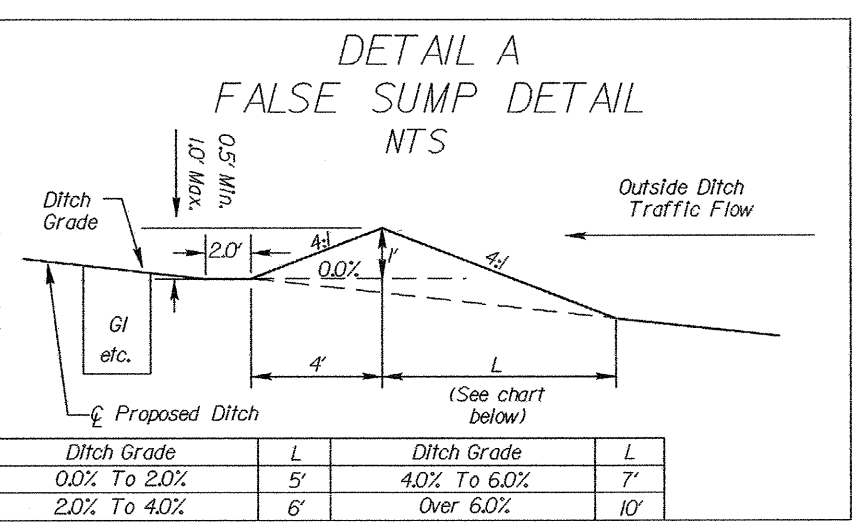
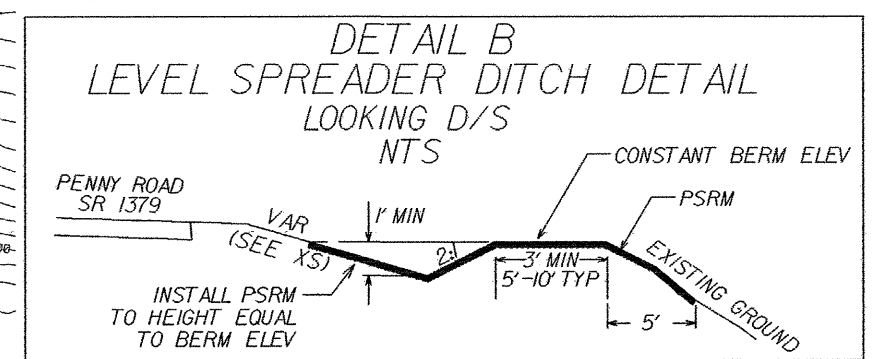
CLEARING AND GRUBBING EROSION CONTROL FOR CONSTRUCTION SHEET 4

31 x 16 x 3  
2 inch Skimmer  
with 1.5 inch  
Orifice Diameter  
6 ft. weir  
ID 4.1C



PI Sta 11+71.02  
Δ = 17° 40' 27.8" (LT)  
D = 5' 12" 31.3"  
L = 339.32'  
T = 171.02'  
R = 1,000.00'  
e = SEE PLANS  
R.O. = SEE PLANS

PI Sta 19+19.22  
Δ = 71° 52' 28.8" (RT)  
D = 7' 09' 43.1"  
L = 1,003.56'  
T = 579.90'  
R = 800.00'  
e = 0.04 FT./FT.  
R.O. = SEE PLANS



FOR -L- PROFILE, SEE SHEET 6

REVISIONS

DATE: 08/01/00  
USER: JAC/SEB  
JOB: B-3917  
DRAWN: JAC/SEB  
CHECKED: JAC/SEB  
DATE: 08/01/00

PROJECT REFERENCE NO. B-3917		SHEET NO. EC-5/CONST.5	
RW SHEET NO.			
ROADWAY DESIGN ENGINEER		HYDRAULICS ENGINEER	
GRAPHIC SCALE			
PLANS			

NOTE: PLACE TEMPORARY ROCK SEDIMENT DAMS TYPE - B AND TEMPORARY ROCK SILT CHECKS TYPE - A AT DRAINAGE OUTLETS.

CLEARING AND GRUBBING EROSION CONTROL FOR CONSTRUCTION SHEET 5

ENVIRONMENTALLY SENSITIVE AREA SEE PROJECT SPECIAL PROVISIONS

32 x 10 x 3  
4' weir  
ID 5.2C

16 x 6 x 3  
4' weir  
ID 5.1C

END STATE PROJECT B-3917  
POT Sta. 25+25.00

CITY OF RALEIGH (LAKE WHEELER)  
PER UNRECORDED MAP BY JOHN A. EDWARDS & CO. DATED MAY 21, 1987

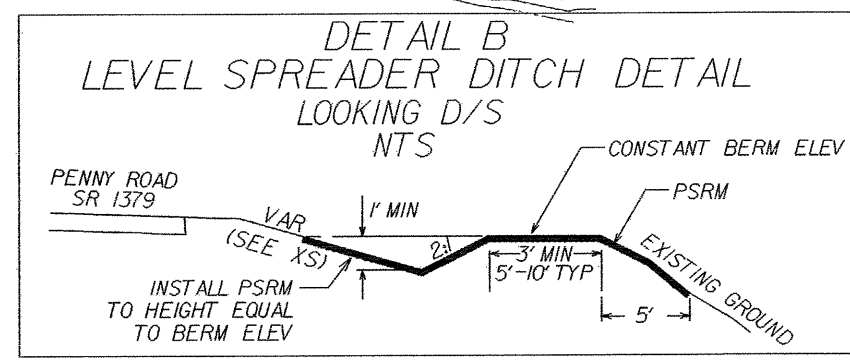
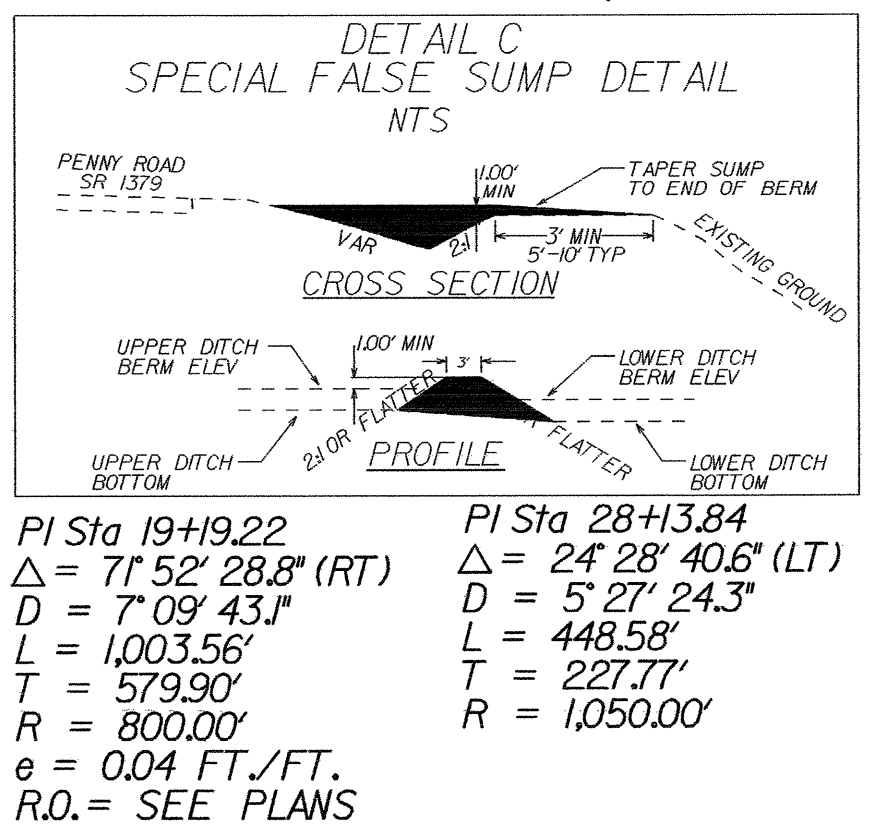
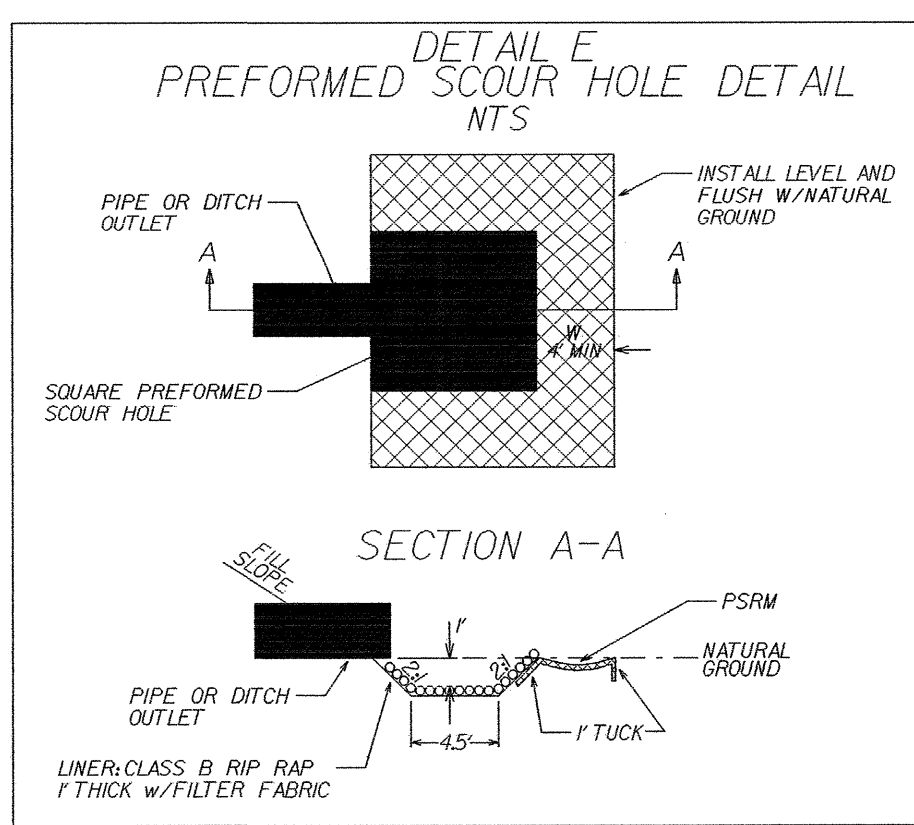
CITY OF RALEIGH (LAKE WHEELER)  
PER UNRECORDED MAP BY JOHN A. EDWARDS & CO. DATED MAY 21, 1987

REVISIONS

MATCHLINE STA 20+00-SEE SHEET NO. 4

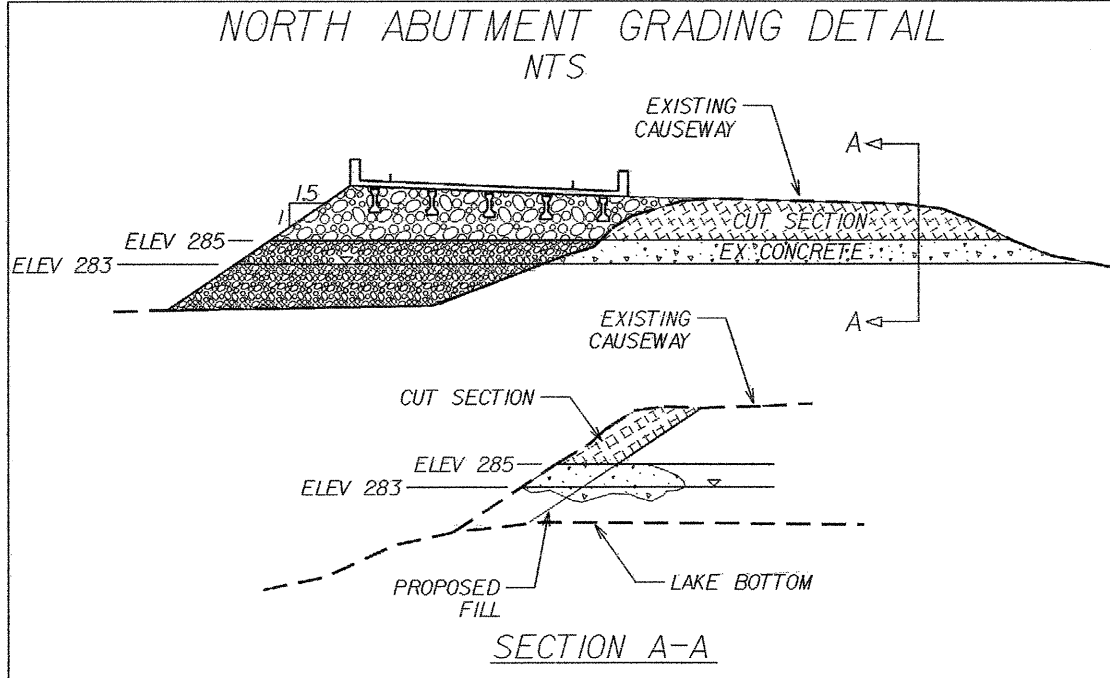
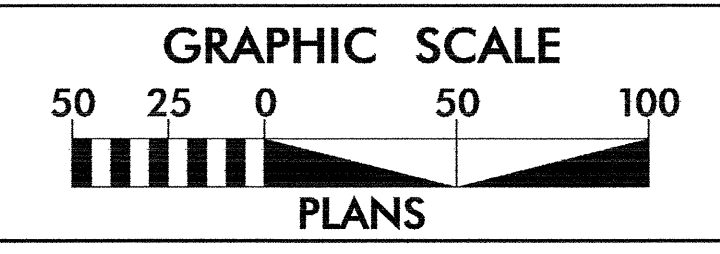
PC Sta. 25+86.08

BL-5  
LT Sta. 29+20.99  
17.37' RT.



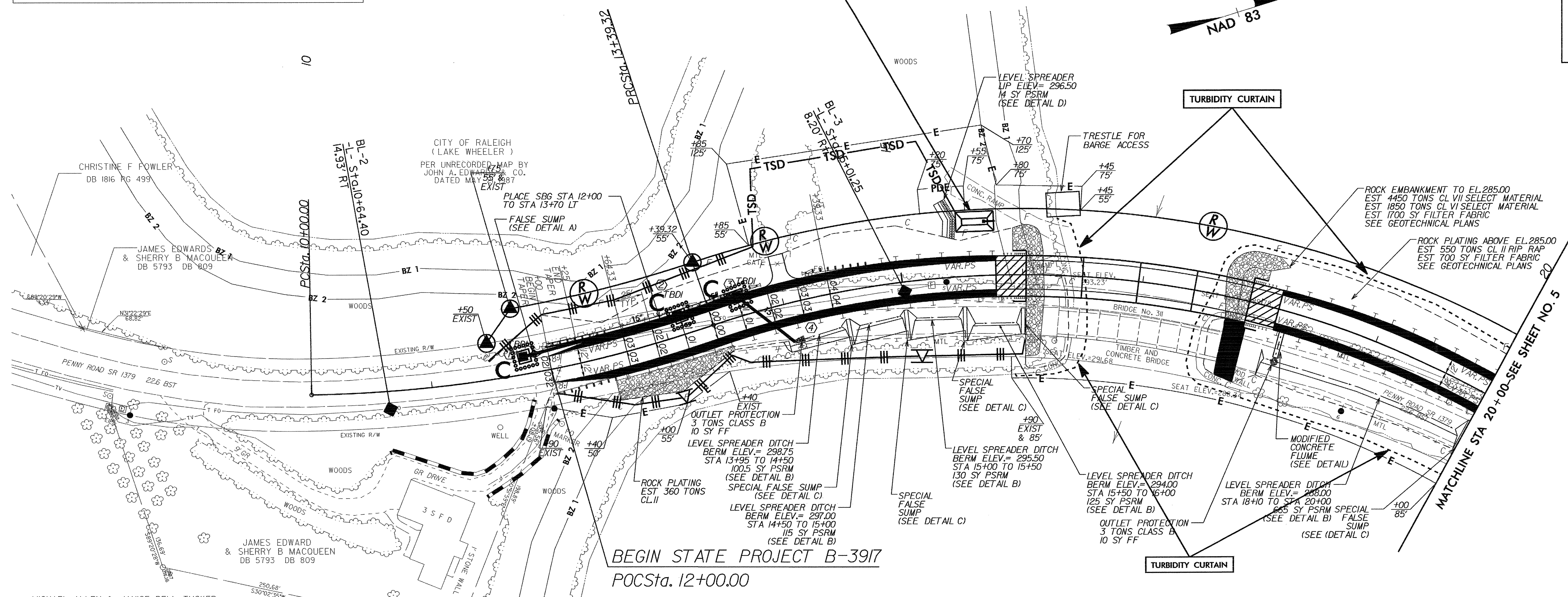
FOR -L- PROFILE, SEE SHEET 6

DATE: 8/20/15  
USER: JAE  
DRAWN: JAE



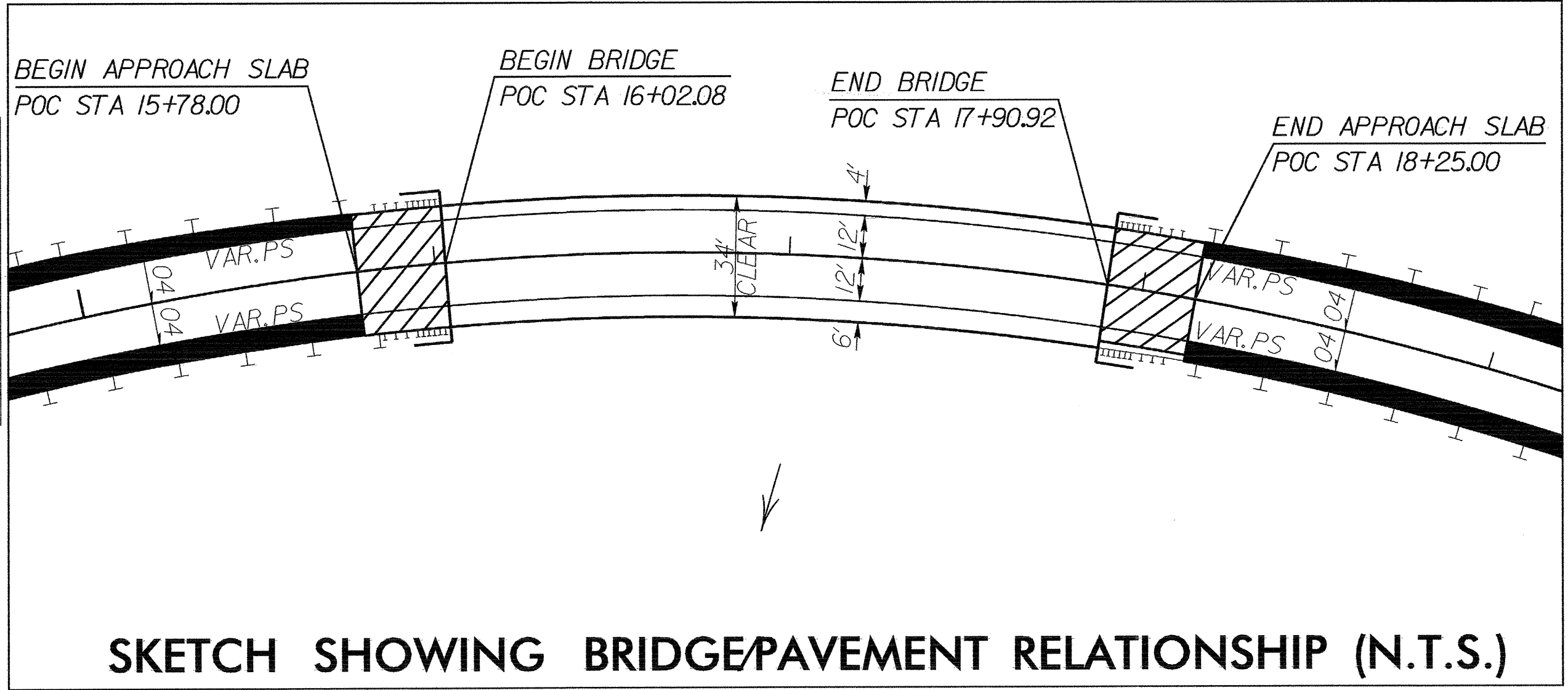
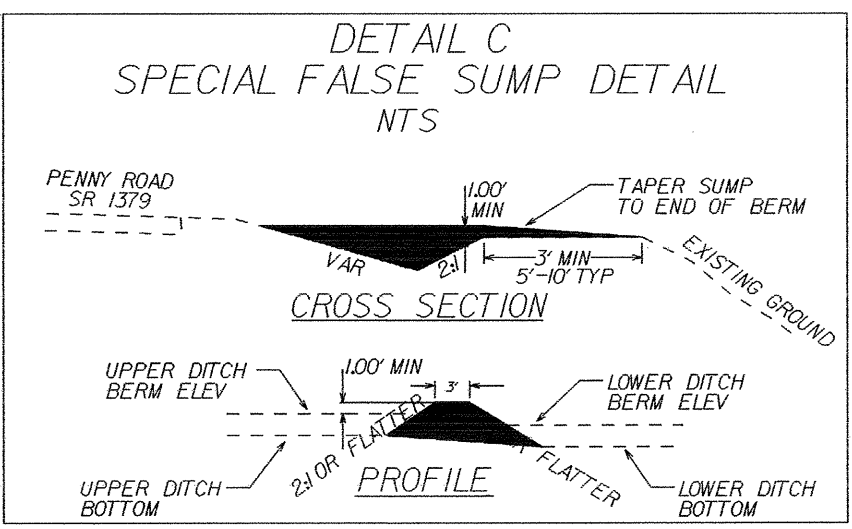
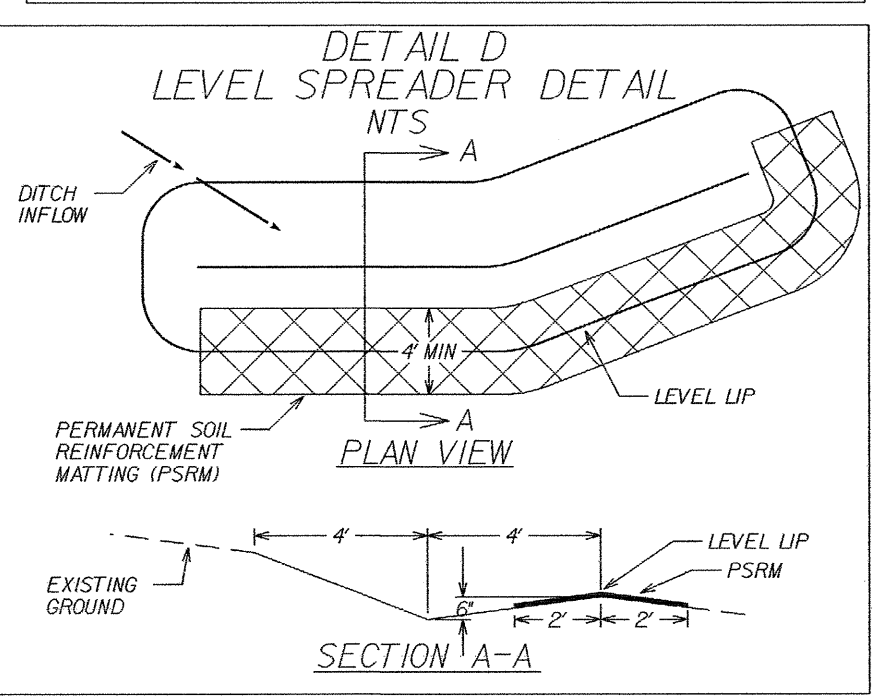
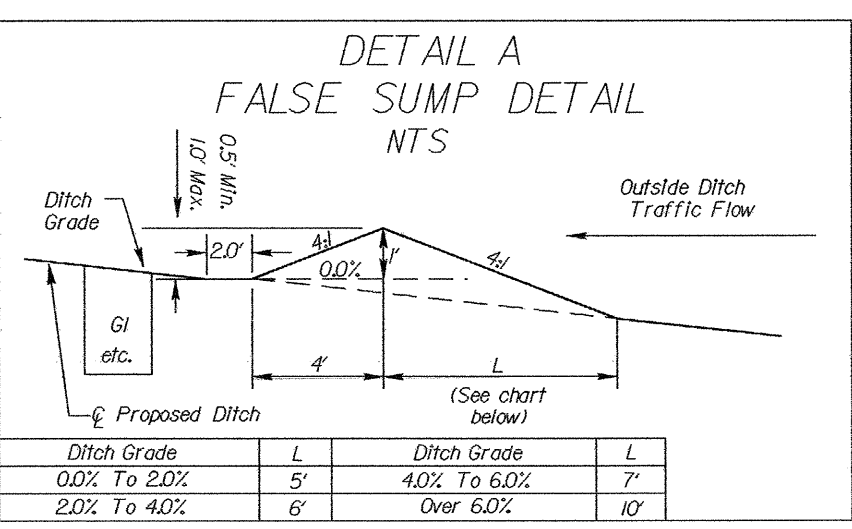
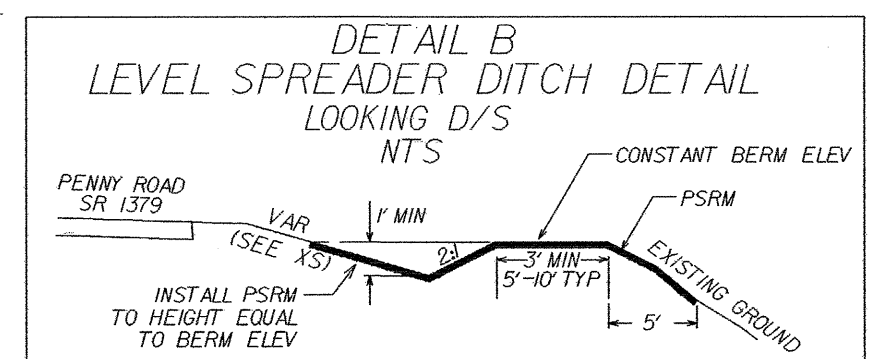
**NOTE:**  
UTILIZE SPECIAL STILLING BASIN AND/OR SKIMMER BASIN AS STILLING BASIN WHERE APPLICABLE.

**31 x 16 x 3  
2 inch Skimmer  
with 1.5 inch  
Orifice Diameter  
6 ft. weir  
ID 4.1C**



PI Sta 11+71.02  
Δ = 17° 40' 27.8" (LT)  
D = 5' 12" 31.3"  
L = 339.32'  
T = 171.02'  
R = 1,000.00'  
e = SEE PLANS  
R.O. = SEE PLANS

PI Sta 19+19.22  
Δ = 71° 52' 28.8" (RT)  
D = 7' 09' 43.1"  
L = 1,003.56'  
T = 579.90'  
R = 800.00'  
e = 0.04 FT./FT.  
R.O. = SEE PLANS



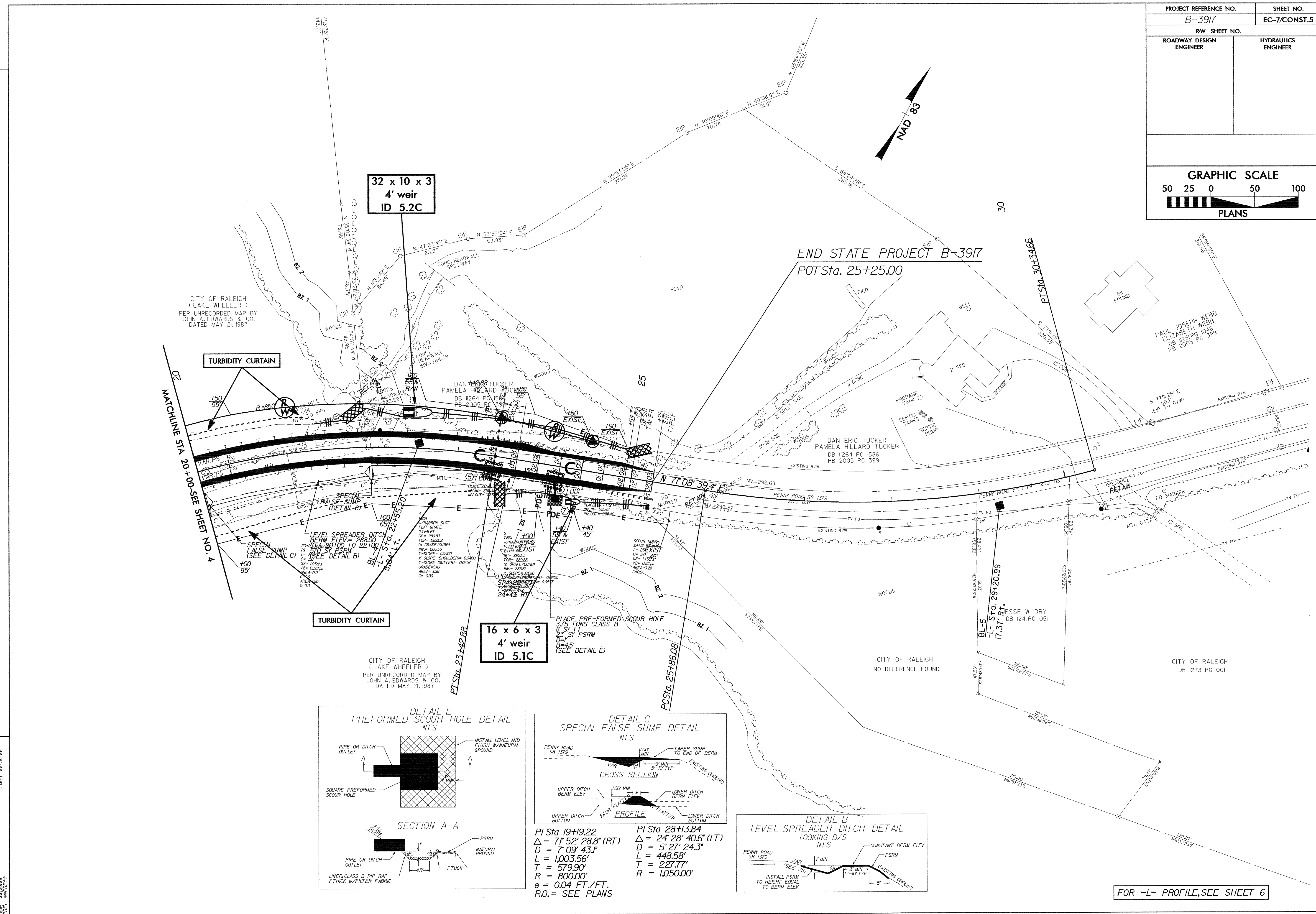
FOR -L- PROFILE, SEE SHEET 6

REVISIONS

DATE: 08/01/08  
TIME: 08:00 AM  
USER: #10000000  
JOB: #10000000  
APP: #10000000

REVISIONS

DATE: 08/01/08  
TIME: 09:15  
USER: JSE/RS  
SCALE: AS SHOWN  
PLOT: 08/01/08

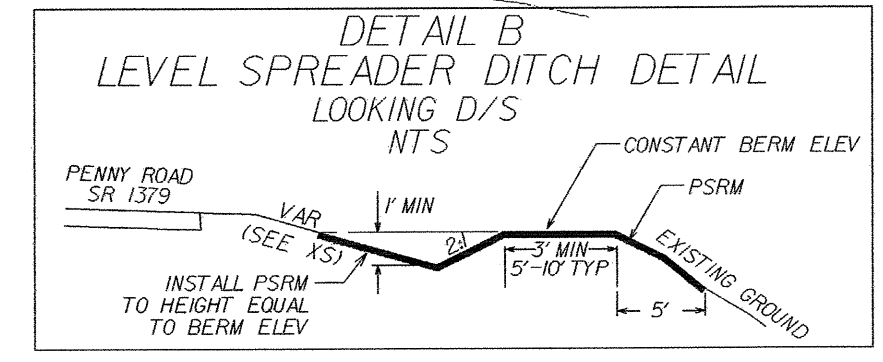
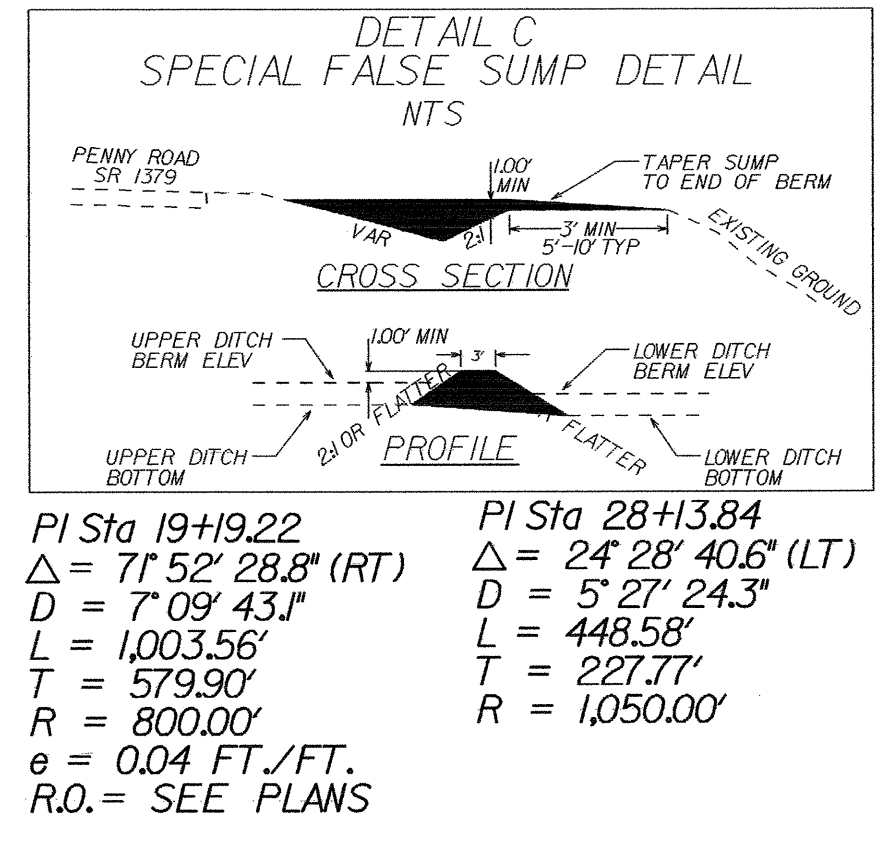
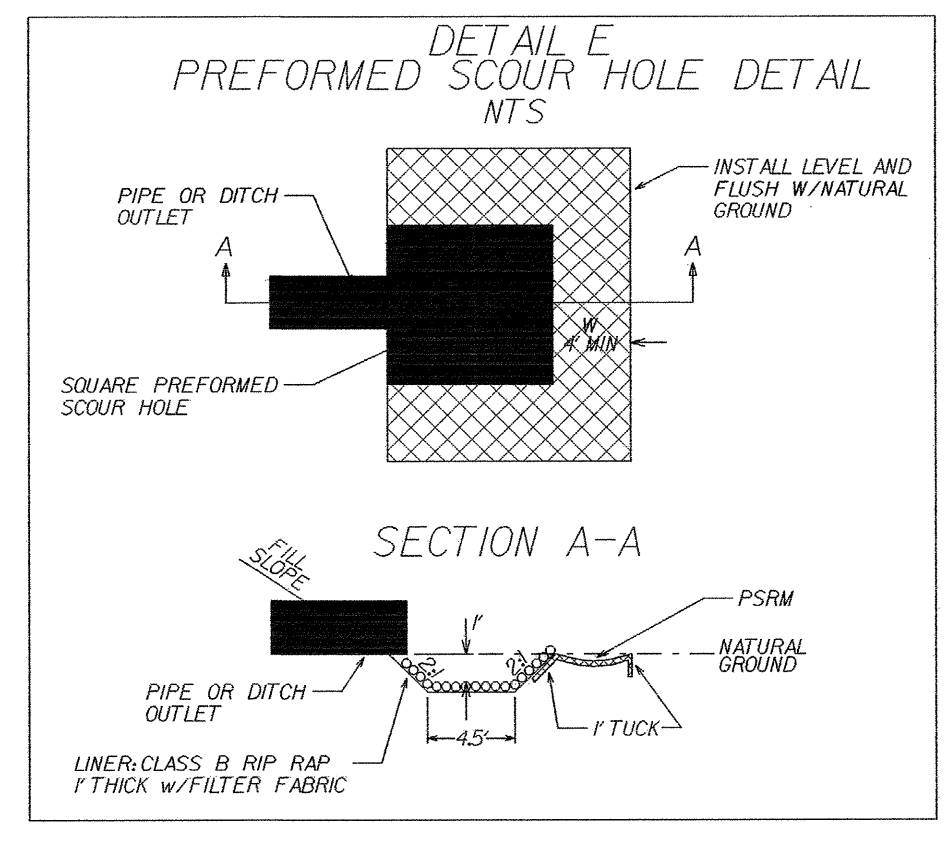


**TURBIDITY CURTAIN**

**TURBIDITY CURTAIN**

**32 x 10 x 3  
4' weir  
ID 5.2C**

**16 x 6 x 3  
4' weir  
ID 5.1C**



FOR -L- PROFILE, SEE SHEET 6