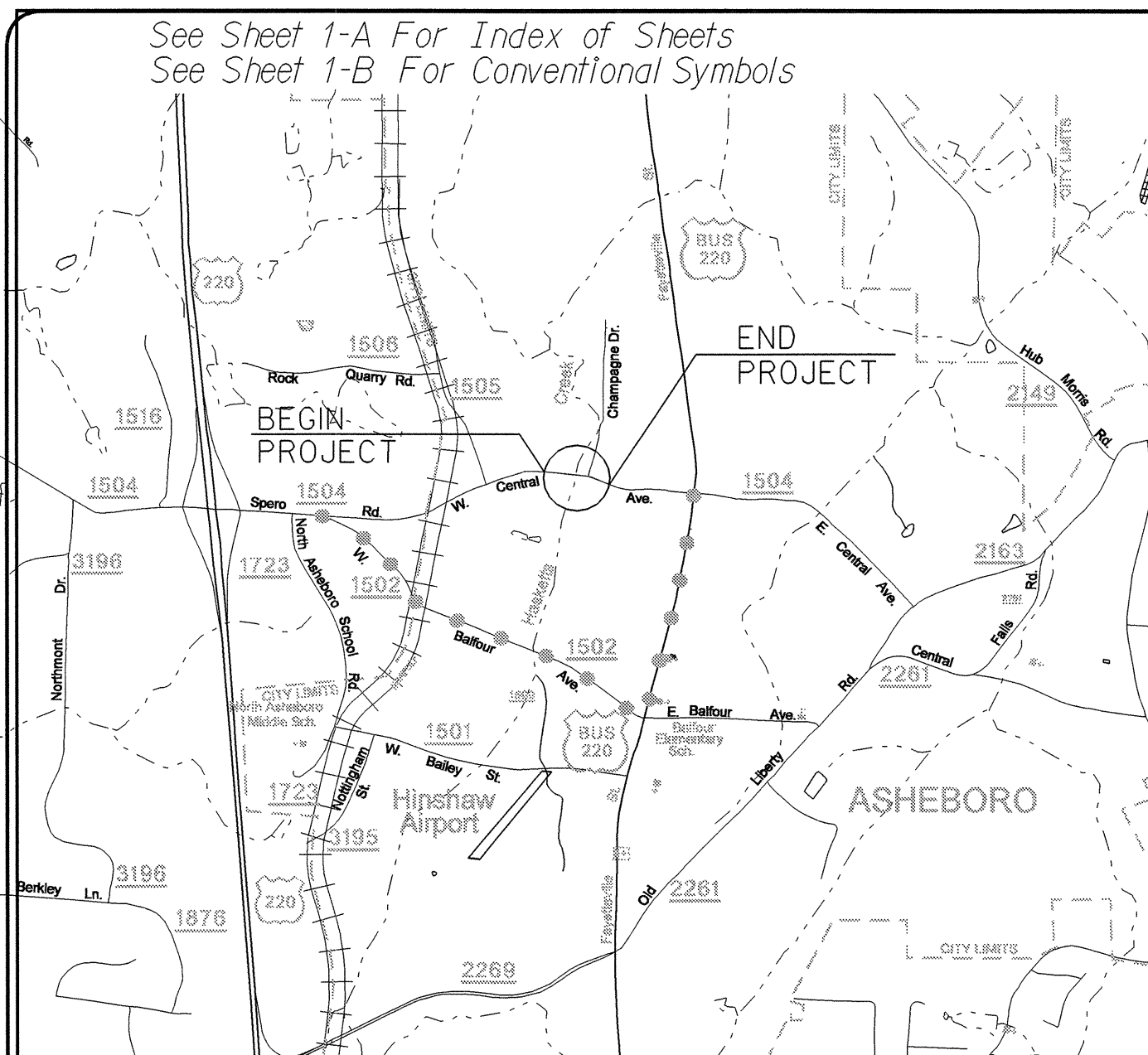


STATE OF NORTH CAROLINA
DIVISION OF HIGHWAYS

**UTILITY CONSTRUCTION PLANS
RANDOLPH COUNTY**

**LOCATION: BRIDGE NO. 71 OVER HASKET CREEK
ON SR 1504 IN ASHEBORO
TYPE OF WORK: UTILITIES RELOCATION**

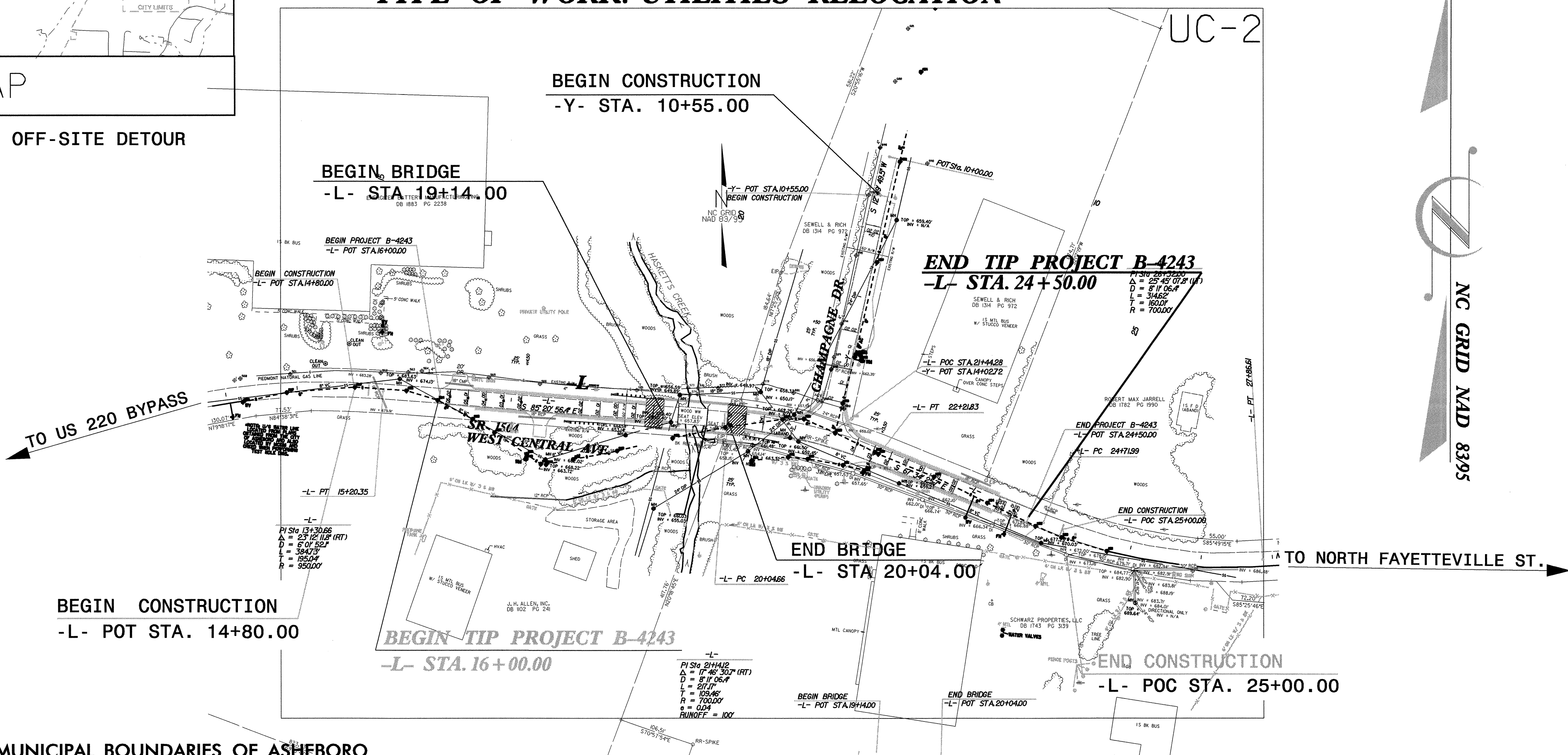


VICINITY MAP

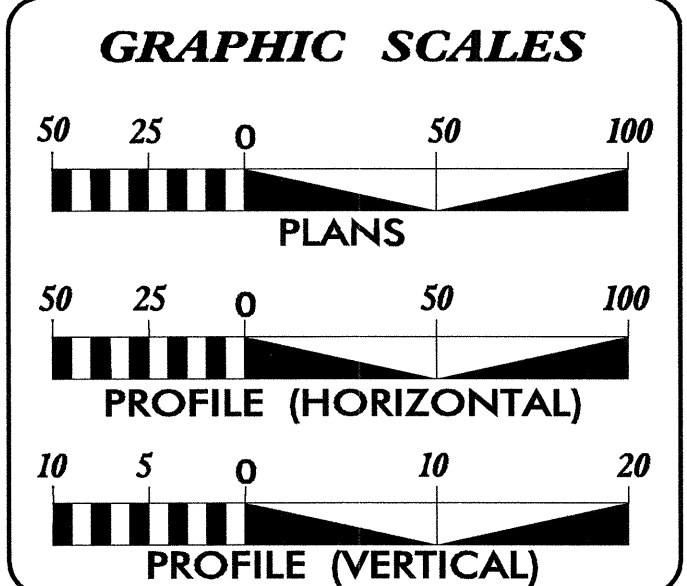
TIP PROJECT: B-4243

CONTRACT: C201680

DENOTES OFF-SITE DETOUR



THIS PROJECT IS WITHIN MUNICIPAL BOUNDARIES OF ASHEBORO
2006 STANDARD SPECIFICATION FOR ROAD AND STRUCTURE
ALL PIPE 4" AND LARGER WILL BE DI PC 350



INDEX OF SHEETS

SHEET NO.	DESCRIPTION
UC-1	TITLE SHEET
UC-2	UTILITY CONSTRUCTION PLAN SHEETS
UC-3	PROFILE SHEET
UC-4	DETAILS SHEET

WATER AND SEWER OWNERS ON PROJECT

(1) WATER CITY OF ASHEBORO
(2) SANITARY SEWER CITY OF ASHEBORO
(DUMONT BUNKER-PH (336) 626-1201)



PREPARED IN THE OFFICE OF:
**DIVISION OF HIGHWAYS
PROJECT SERVICES
UTILITY SECTION**

1591 MAIL SERVICES CENTER
RALEIGH NC 27699-1591
PHONE (919) 250-4128
FAX (919) 250-4119

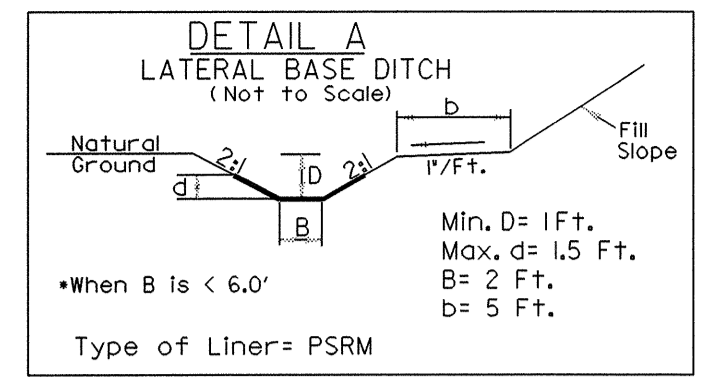
Roger Worthington, P.E. UTILITIES SECTION ENGINEER
Carl Barclay, P.E. UTILITIES SQUAD LEADER PROJECT ENGINEER
Ali Kouchehi UTILITIES PROJECT DESIGNER



END ADDITIONAL SURVEYS
APPROX. 400' FROM INTERSECTION

BEGIN ADDITIONAL SURVEYS
APPROX. 200' FROM INTERSECTION

NC GRID NAD 8395



OM -L- STA. 18+00 TO STA. 19+43 LT 121.0 CY DDE
 IOM -L- STA. 19+60 TO STA. 20+92 LT 71.5 CY DDE
 ROM -L- STA. 17+60 TO STA. 19+55 RT 65.5 CY DDE

B4243-1
 -BL- POT 5+00.00 =
 -L- STA. 13+14.74 20.61' LT

BEGIN PROJECT B-4243
 -L- POT STA. 16+00.00

BEGIN CONSTRUCTION
 -L- POT STA. 14+80.00
 11 1/4° BEND
 STA. 14+83.7
 OFFSET 3.2' LT

WATER AND SEWER OWNED
BY CITY OF ASHEBORO

PROP. 1050' OF 6" WATER LINE
 PROP. 40' OF 16" STEEL ENCASMENT
 BY TRENCHLESS INSTALLATION
 PROP. 1-6" GATE VALVE
 SEE SHEET UC-3 FOR PROFILE AND DETAIL

RECONNECT EXISTING 3/4" WATER METER
 USING 3/4" COPPER WATER PIPE

PROP. ABANDON 115'
 OF 8" WATER LINE

PROP. RECONNECT EXISTING 3/4" WATER METER
 USING 3/4" COPPER WATER PIPE

PROP. 67' OF 8" WATER LINE
 PROP. 1-8" GATE VALVE

PROP. 1-FIRE HYDRANT

22 1/2° BEND
 STA. 24+99.1
 OFFSET 10.4' LT
 CONNECT TO EXISTING
 WATER LINE

PROP. ABANDON 1056'
 OF 6" WATER LINE

PROP. 4' DIA. MANHOLE "2"
 55.2' RIGHT OF -L- LINE
 STA. 18+10.25

PROP. ABANDON
 UTILITY MANHOLE

PROP. 107' OF 8" GRAVITY
 SEWER LINE

PROP. ABANDON 125' OF
 8" GRAVITY SEWER LINE

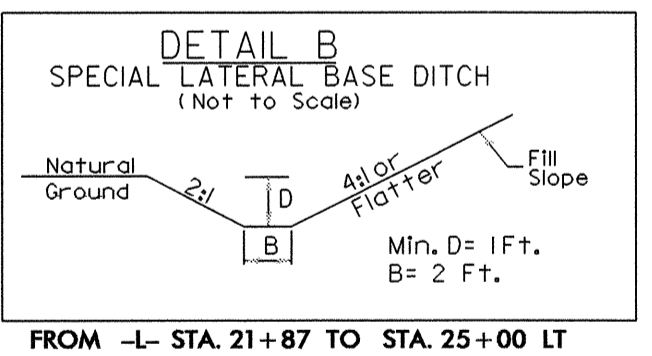
PROP. 85' OF 18"
 GRAVITY SEWER LINE

PROP. 4' DIA. MANHOLE "1"
 54.4' RIGHT OF -L- LINE
 STA. 19+17.6

PROP. RECONNECT EXISTING 3/4" WATER METER
 USING 3/4" COPPER WATER PIPE

CONCRETE THRUST COLLAR
 GRADE TO MAINTAIN
 TO PROPOSED DITCH
 END CONSTRUCTION
 -L- POC STA. 25+00.00

-L-
 PI Sta 13+30.66
 $\Delta = 23^{\circ}12'11.8"$ (RT)
 D = 6'01" 52.1"
 L = 384.73'
 T = 195.04'
 R = 950.00'



DATUM DESCRIPTION

THE LOCALIZED COORDINATE SYSTEM DEVELOPED FOR THIS PROJECT IS BASED ON THE STATE PLANE COORDINATES ESTABLISHED BY NCDOT FOR MONUMENT "B4243-1"

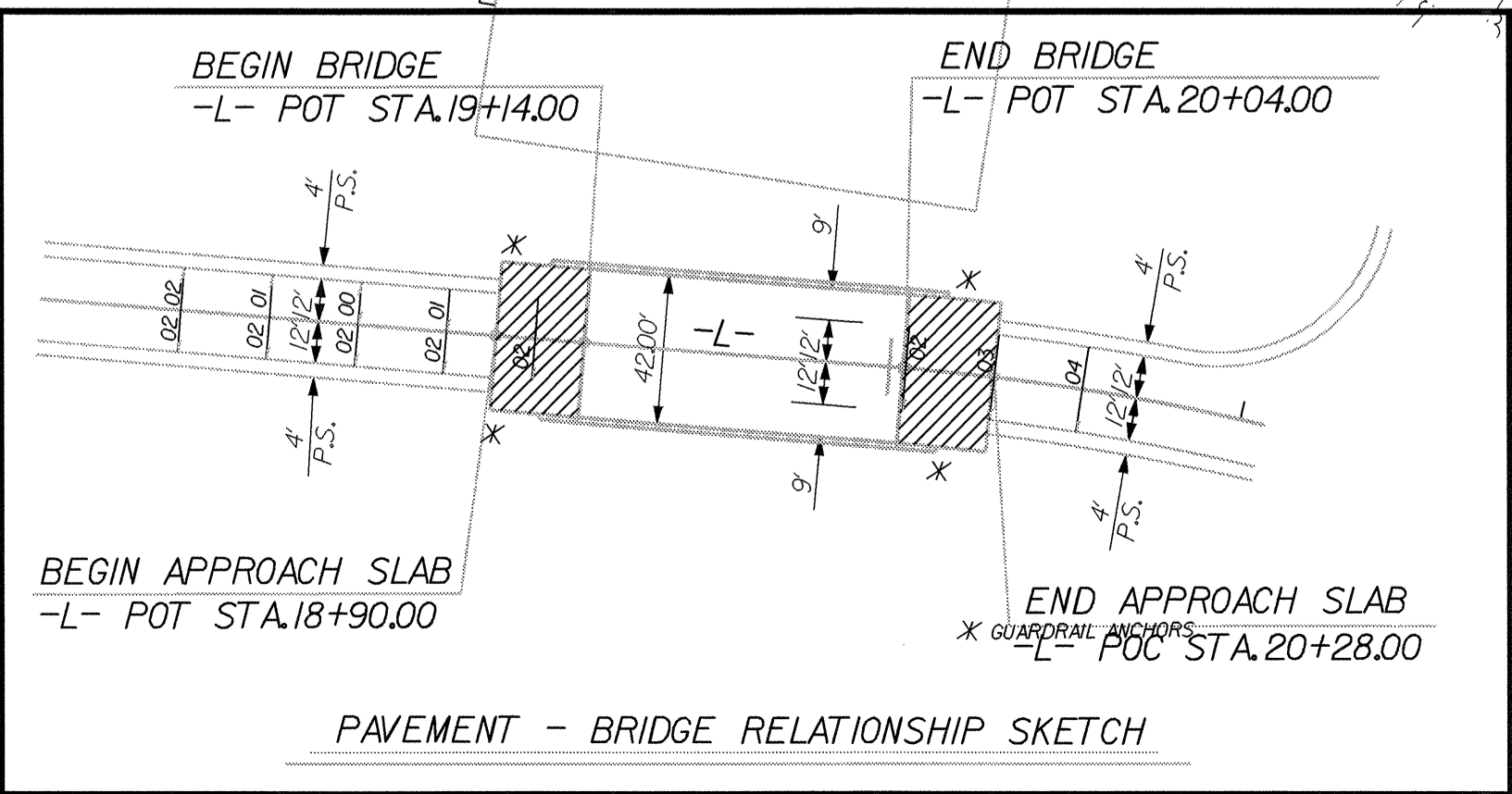
WITH NAD 1983/95 STATE PLANE GRID COORDINATES OF NORTHING: 730494.097(ft) EASTING: 1758939.376(ft) THE AVERAGE COMBINED GRID FACTOR USED ON THIS PROJECT (GROUND TO GRID) IS: 0.999883100

THE N.C. LAMBERT GRID BEARING AND LOCALIZED HORIZONTAL GROUND DISTANCE FROM "B4243-1" TO -L- STATION IS 585°44'29"E 288.09'

ALL LINEAR DIMENSIONS ARE LOCALIZED HORIZONTAL DISTANCES VERTICAL DATUM USED IS NAVD 88

-BL- IOI PINC II+74.06 =
 -L- STA. 19+85.82 16.58' RT =
 -T- PINC 6+73.91
 ELEV = 659.62
 REBAR & CAP SET

-L-
 PI Sta 21+14.12
 $\Delta = 17^{\circ}46'30.7"$ (RT)
 D = 8'11" 06.4"
 L = 217.17'
 T = 109.46'
 R = 700.00'
 e = 0.04
 RUNOFF = 100'



PAVED SHOULDER

BRIDGE APPROACH SLAB

FOR -L- & -Y- PROFILES, SEE SHEET NO. 5
 FOR STRUCTURE PLANS, SEE SHEET S-1 THRU S-??

-L-
 PI Sta 26+32.00
 $\Delta = 25^{\circ}45'07.8"$ (LT)
 D = 8'11" 06.4"
 L = 314.62'
 T = 160.01'
 R = 700.00'

07-AUG-2007 14:37
 U:\311\STATE\PROJECTS\B4243\rdy\uc1\psh.dgn

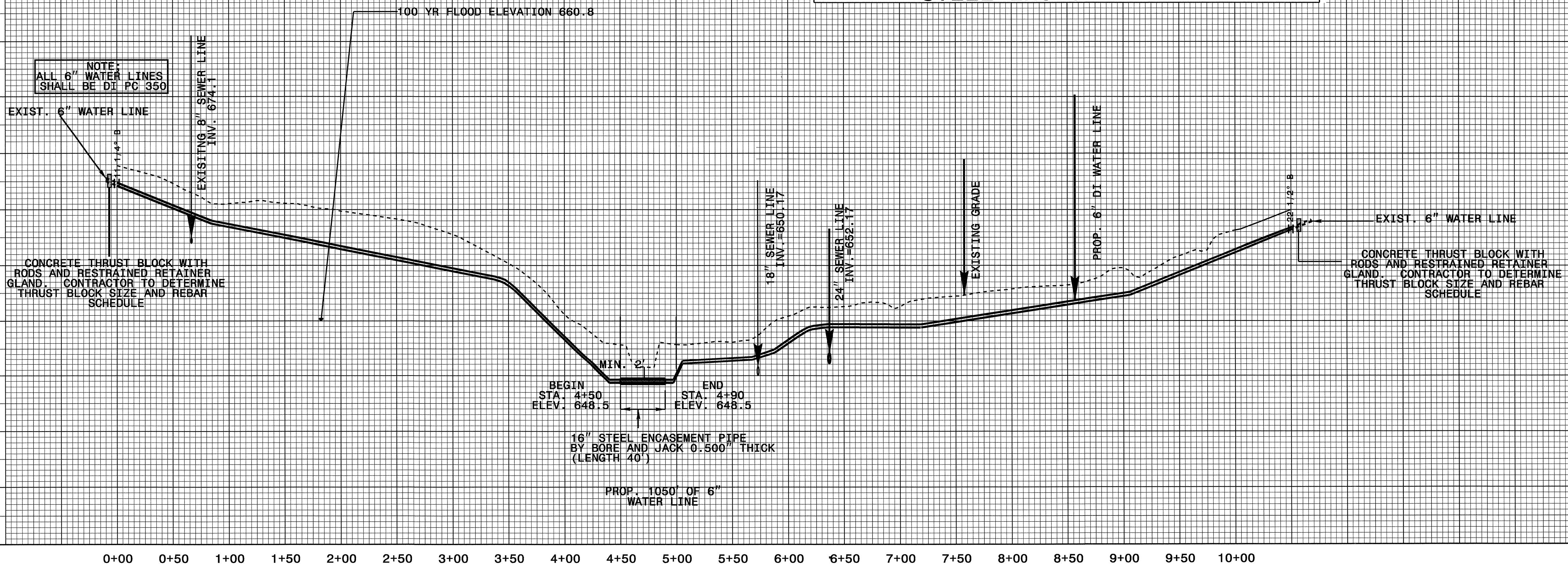
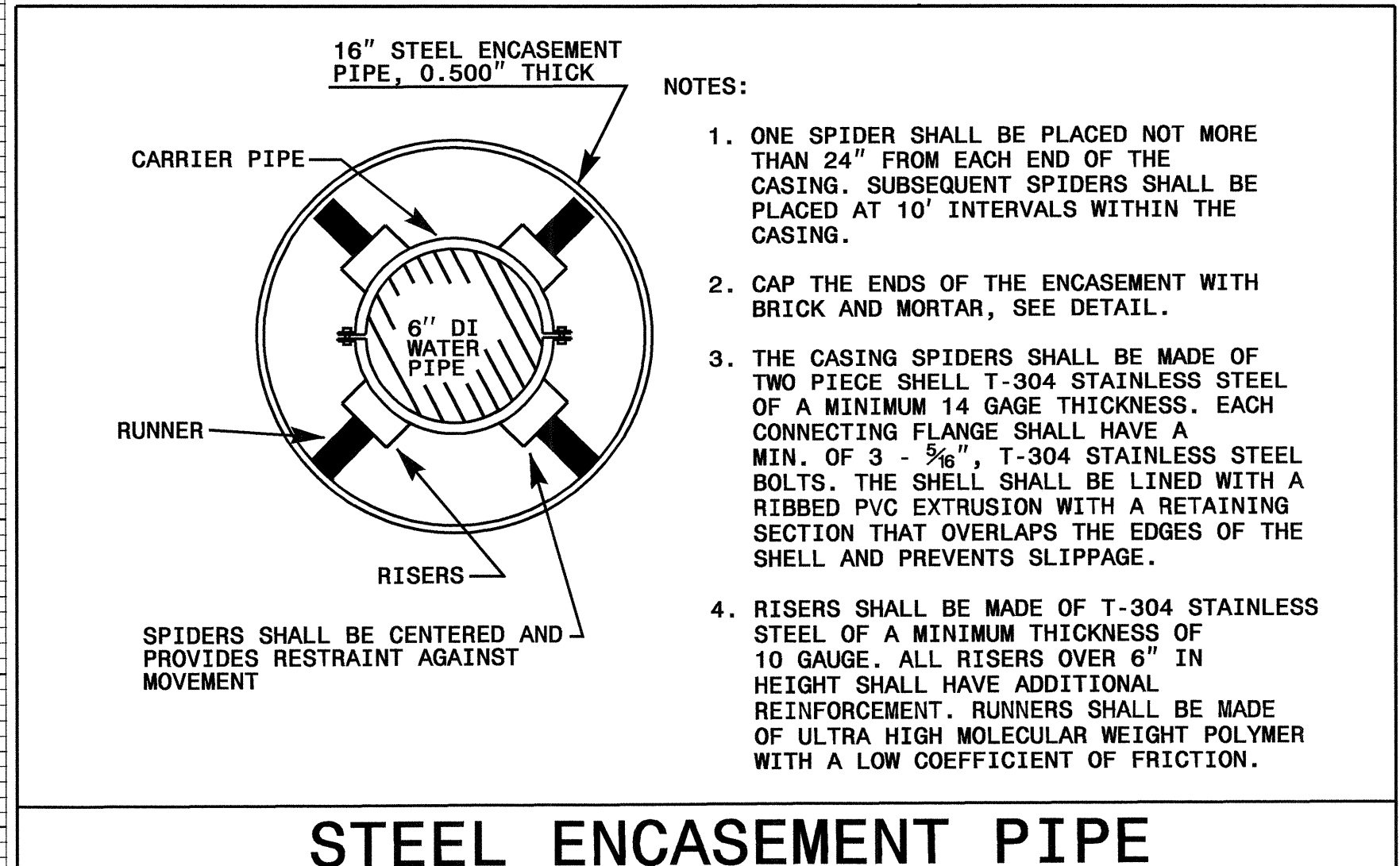
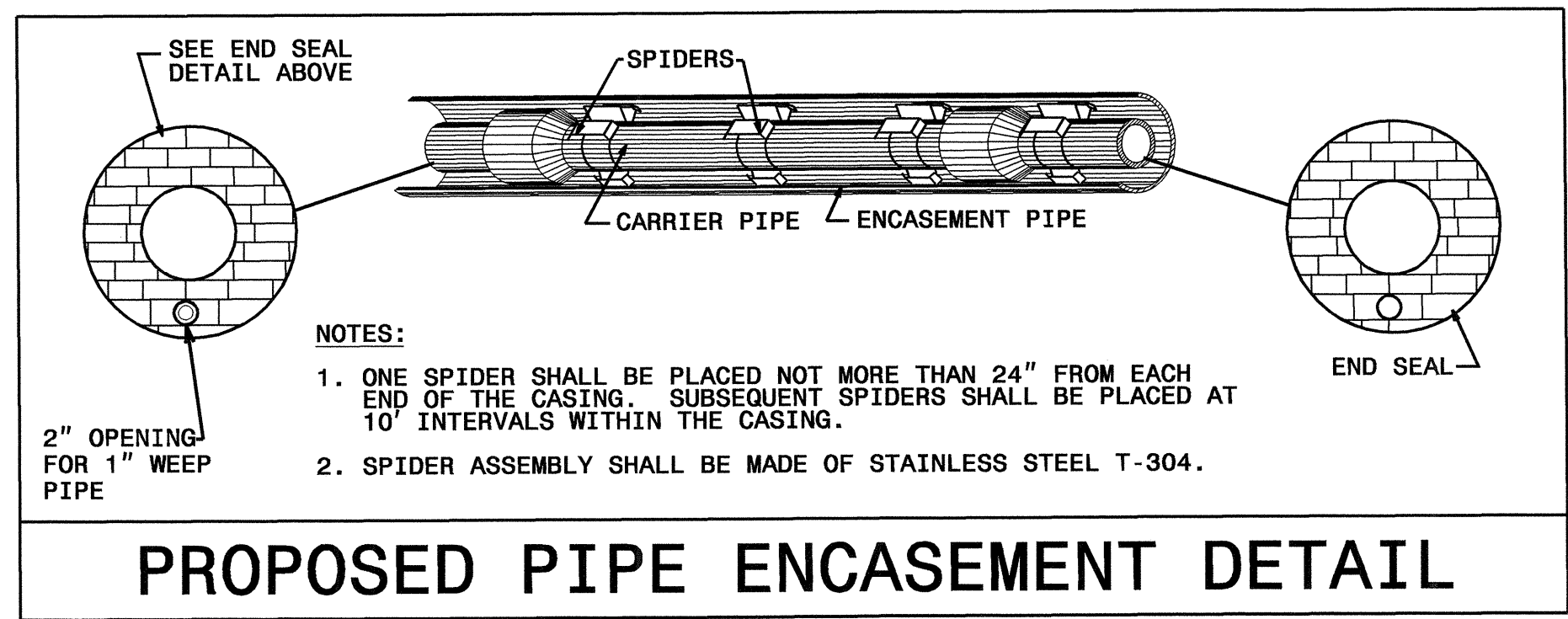
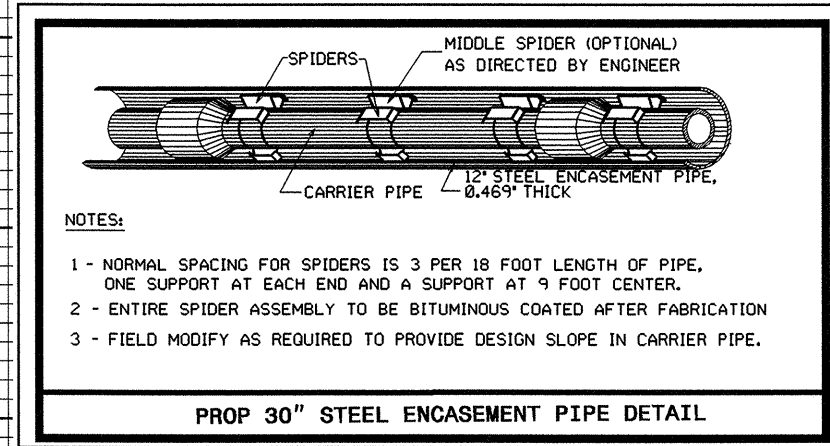
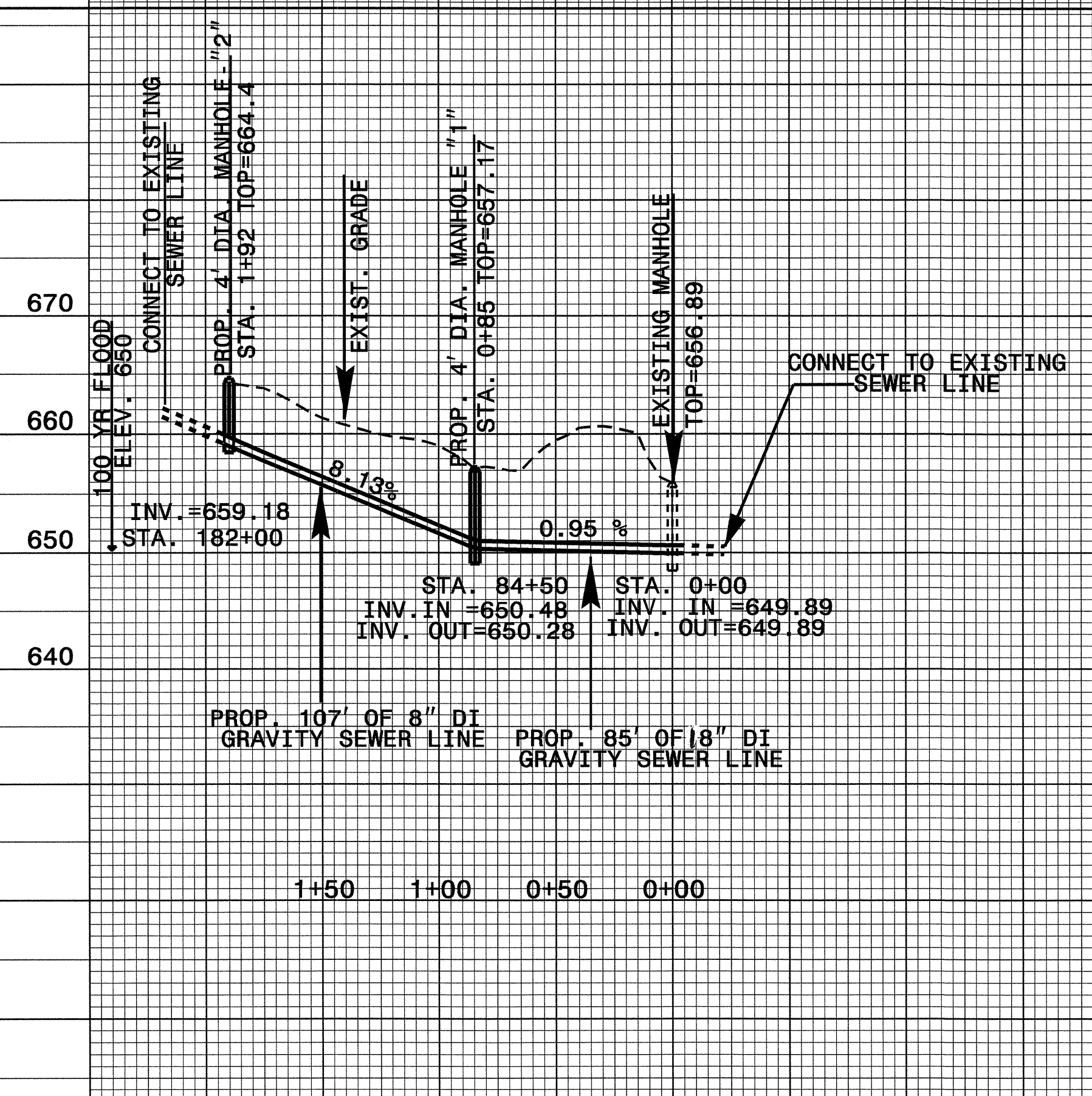
DESIGNED BY: ARK
 DRAWN BY: ARK
 CHECKED BY: CAB
 APPROVED BY: CAB
 REVISED:
 NORTH CAROLINA
 DEPARTMENT OF
 TRANSPORTATION
 PROJECT SERVICES UNIT
 PHONE: (919)250-4128
 FAX: (919)250-4119



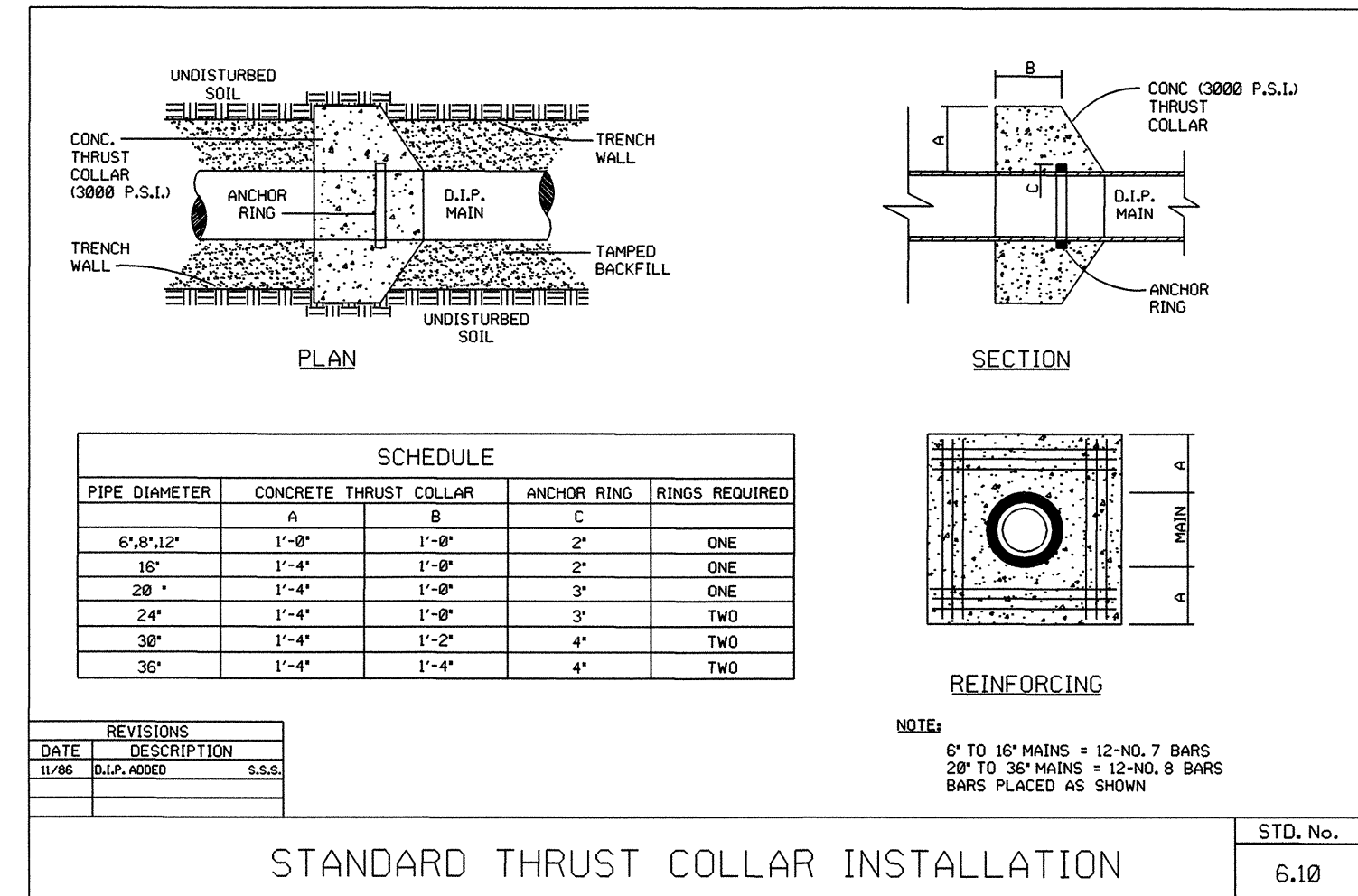
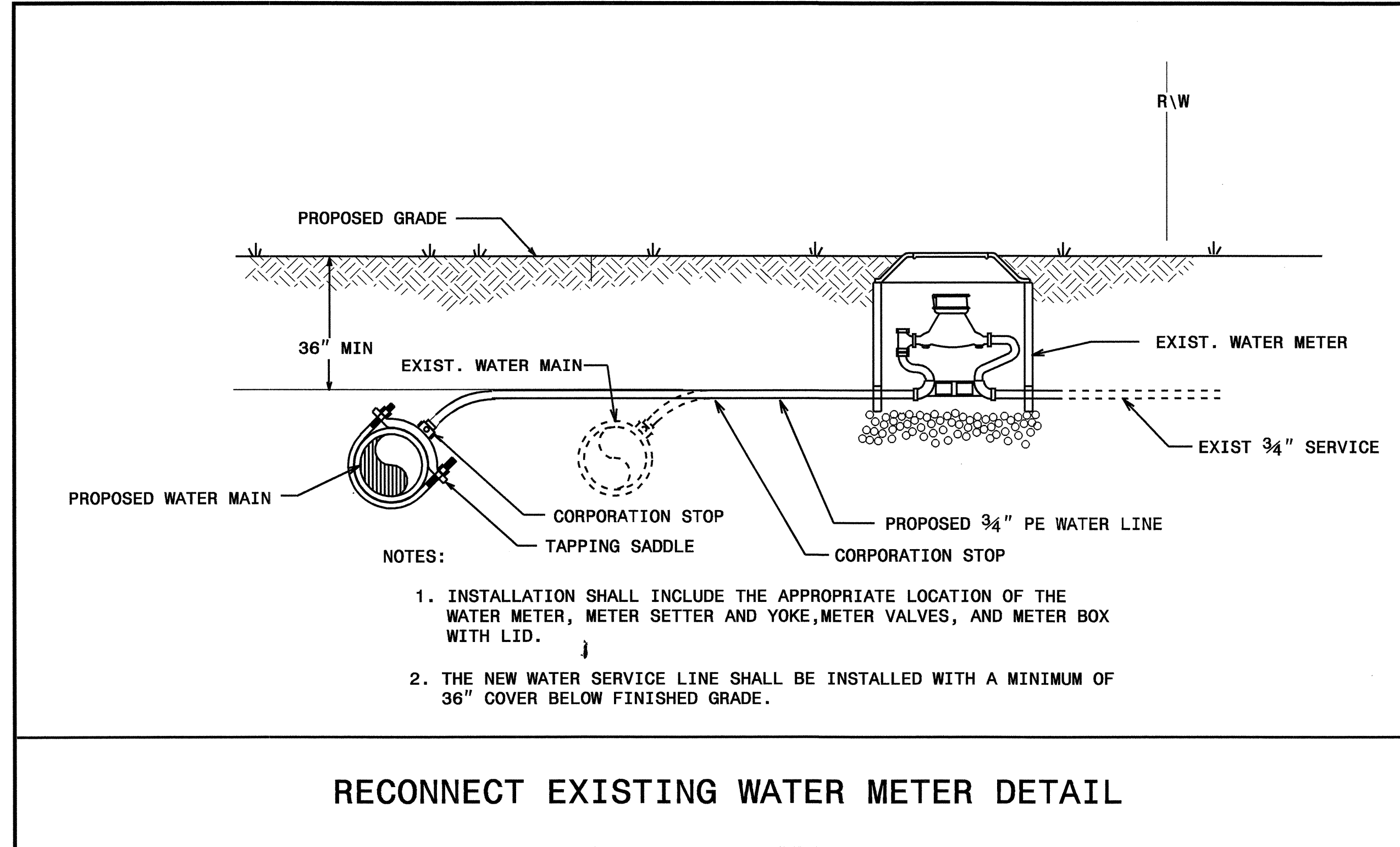
UTILITY CONSTRUCTION
 PLANS ONLY

UTILITY CONSTRUCTION

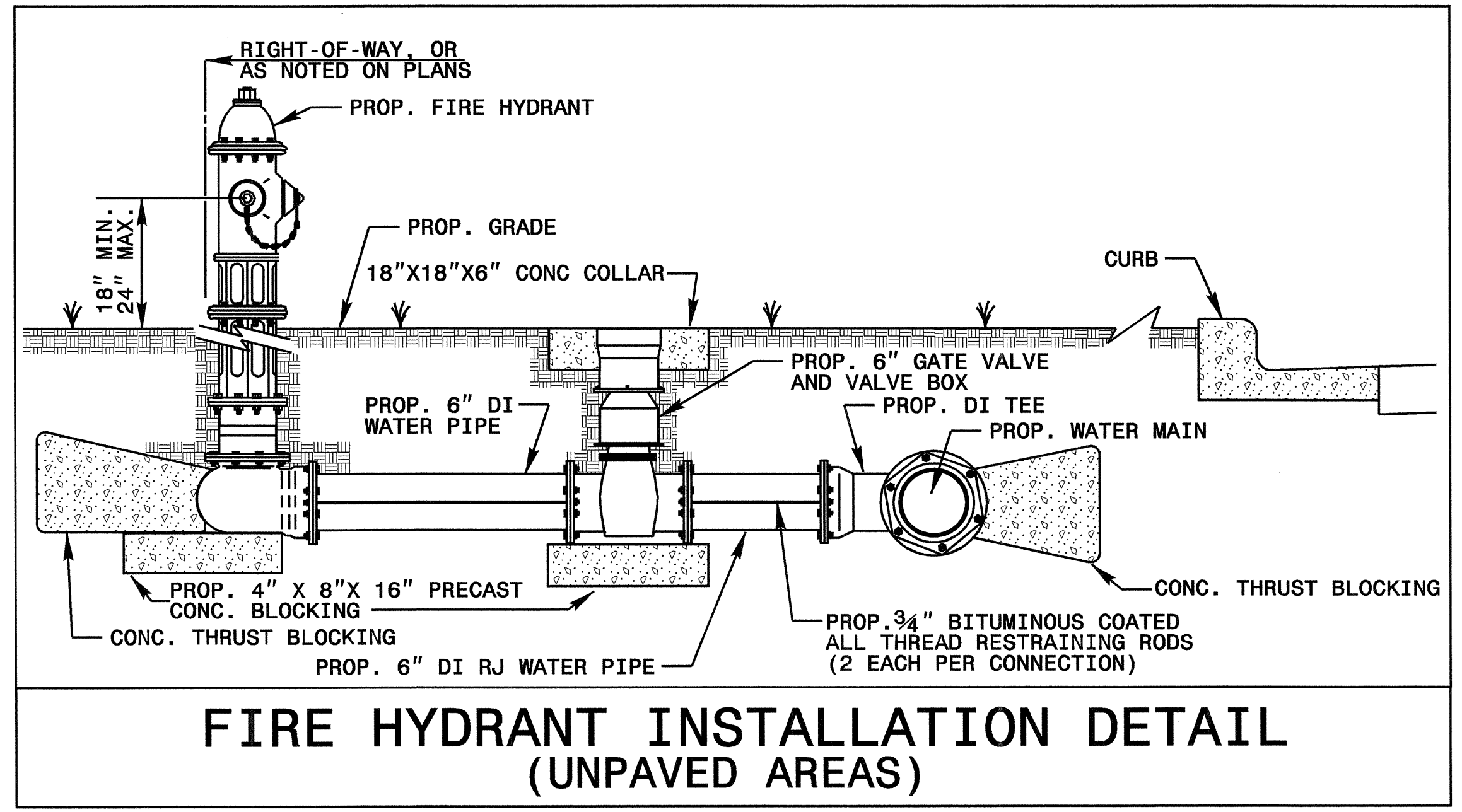
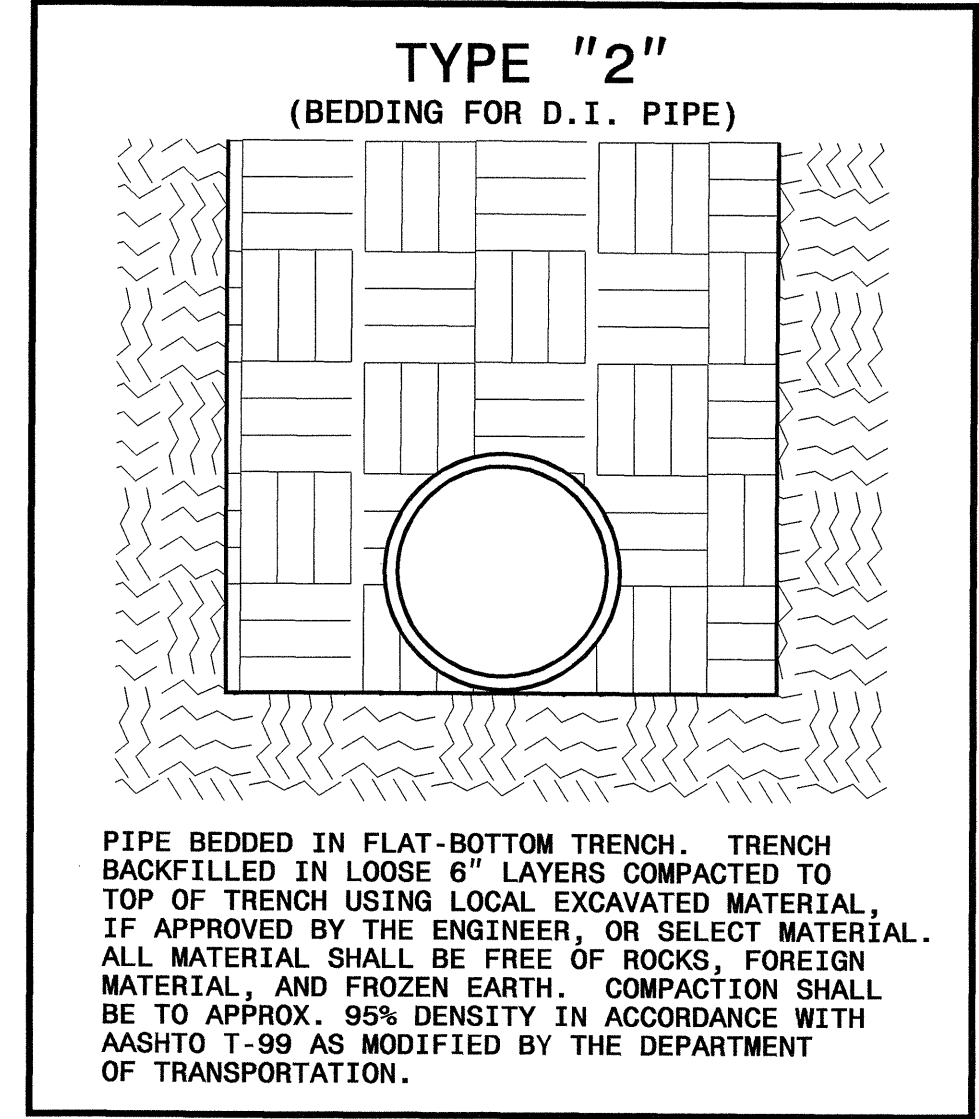
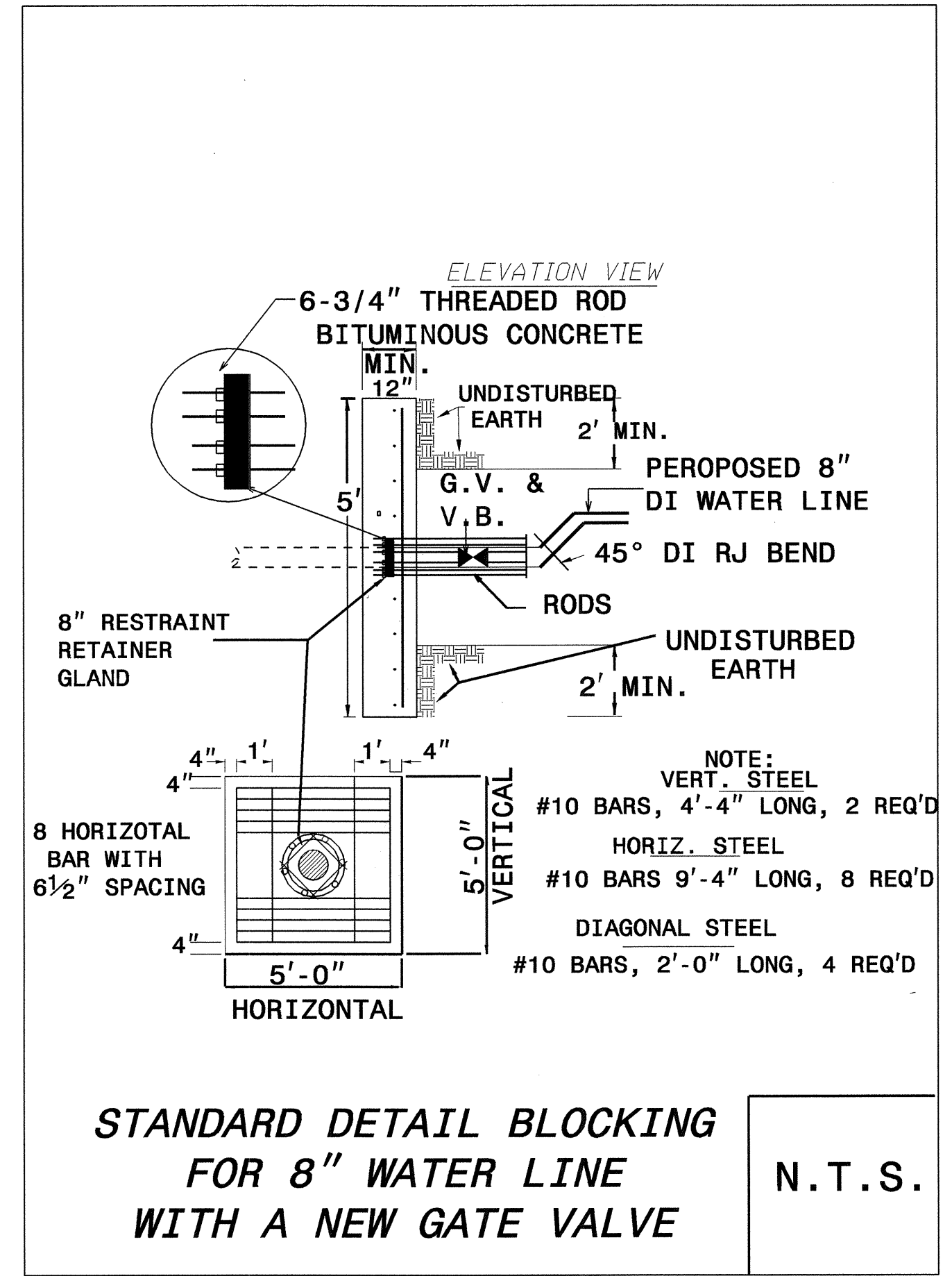
5/14/99



08 JUN 2007 13:11 ut:\proj\proj\14243_r.dwg uc1.psh.dgn



NOMINAL PIPE SIZE (INCHES)	TRENCH WIDTH (INCHES)	NOMINAL PIPE SIZE (INCHES)	TRENCH WIDTH (INCHES)
4	28	20	44
6	30	24	48
8	32	30	54
10	34	36	60
12	36	42	66
14	38	48	72
16	40	54	78
18	42		

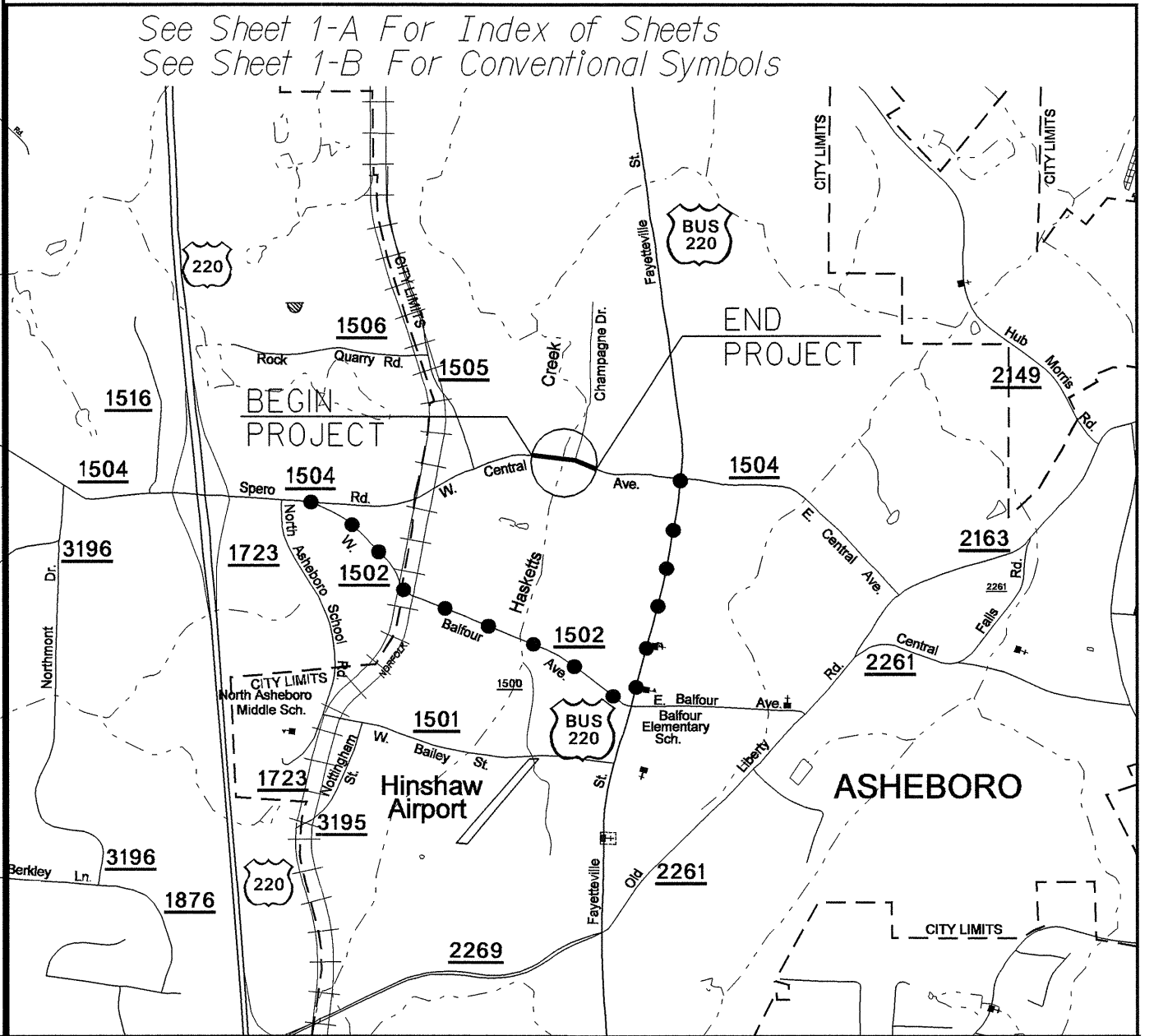


T.I.P. NO.	SHEET NO.
B-4243	UO-1

STATE OF NORTH CAROLINA
DIVISION OF HIGHWAYS

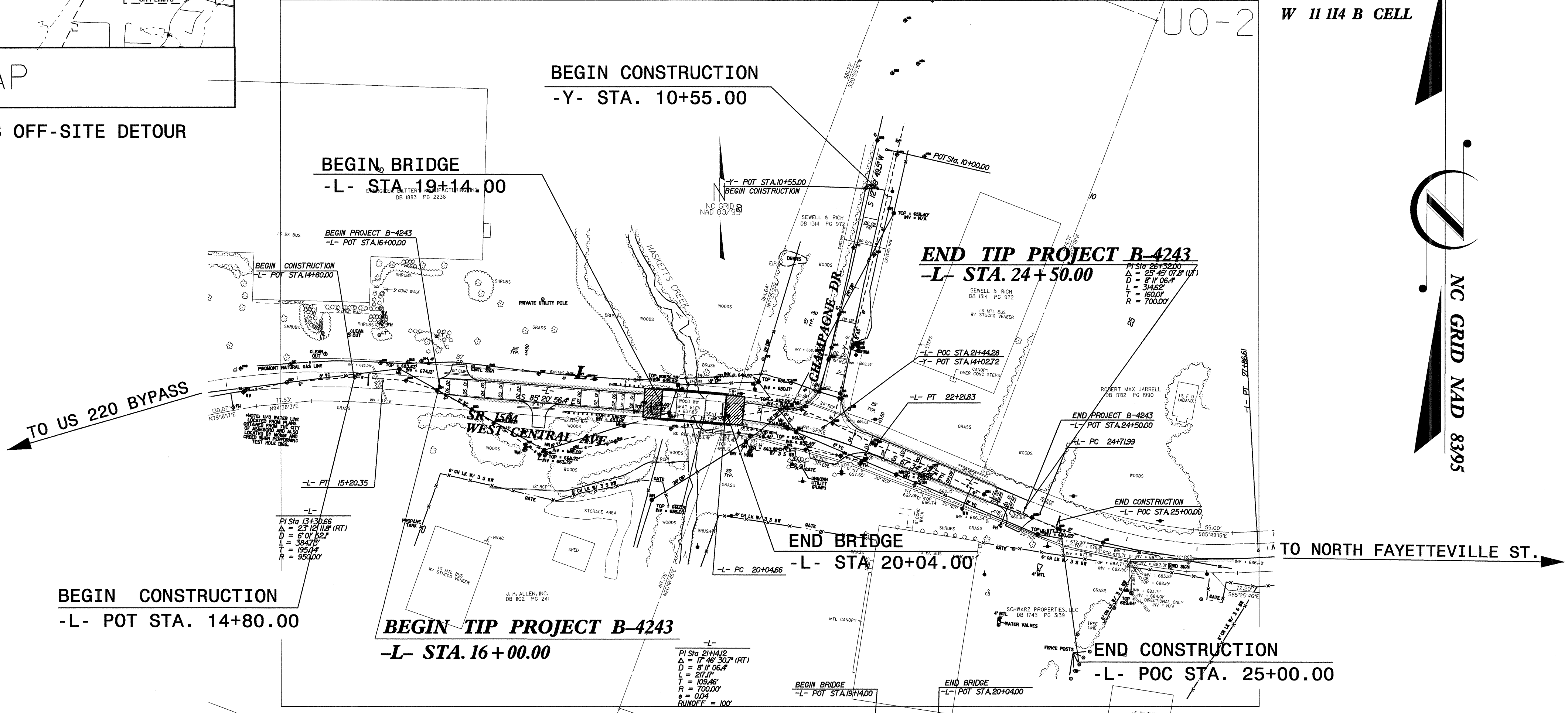
**UTILITY BY OTHERS PLANS
RANDOLPH COUNTY**

**LOCATION: BRIDGE NO. 1 OVER HASKET CREEK
ON SR 1504 IN ASHEBORO
TYPE OF WORK: UTILITIES RELOCATION**

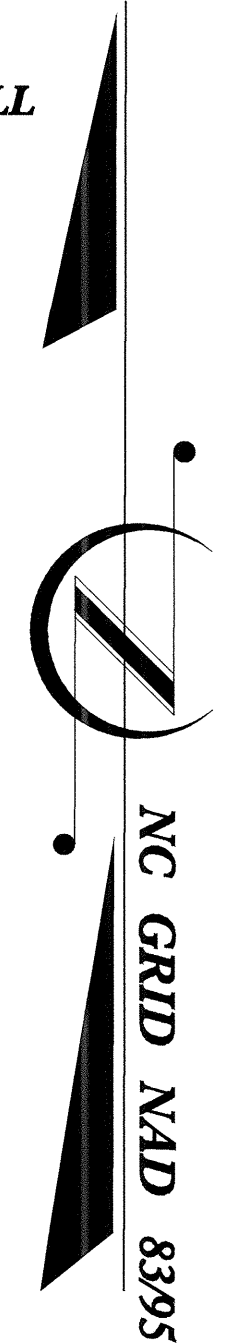


VICINITY MAP

●●●●● DENOTES OFF-SITE DETOUR



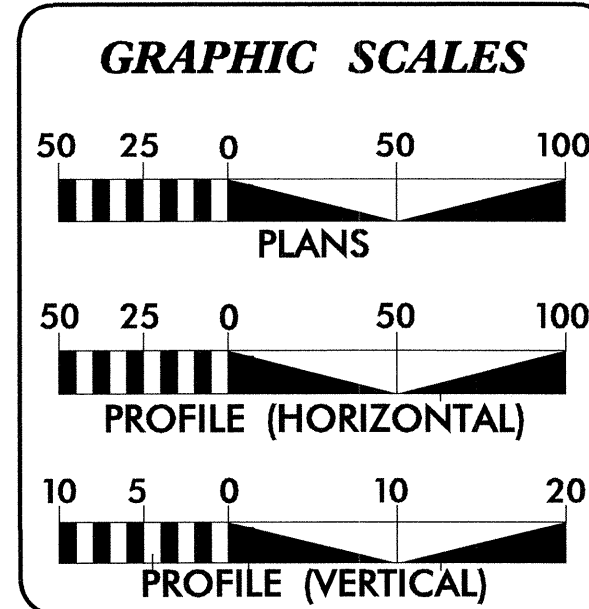
W 1114 B CELL



THIS PROJECT IS WITHIN MUNICIPAL BOUNDARIES OF ASHEBORO
2006 STANDARD SPECIFICATION FOR ROAD AND STRUCTURE

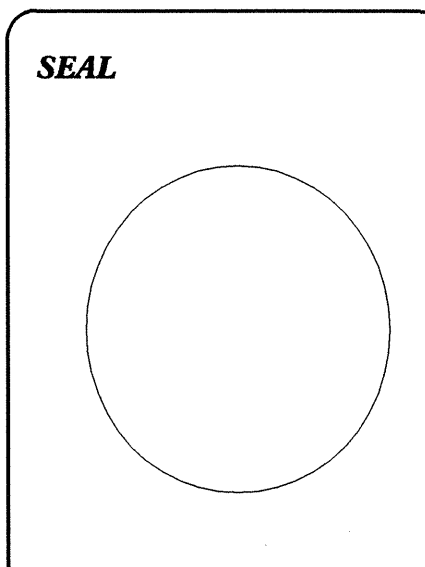
TIP PROJECT: B-4243

CONTRACT: C201680



INDEX OF SHEETS	
SHEET NO.	DESCRIPTION
UO-1	TITLE SHEET
UO-2	UTILITY BY OTHERS PLAN SHEETS

- UTILITY OWNERS ON PROJECT**
- (1) PROGRESS ENERGY (TRANSMISSION)
 - (2) PIEDMONT NATURAL GAS
 - (3) PROGRESS ENERGY (DISTRIBUTION)
 - (4) EMBARQ



PREPARED IN THE OFFICE OF:
**DIVISION OF HIGHWAYS
DESIGN SERVICES
UTILITY SECTION**

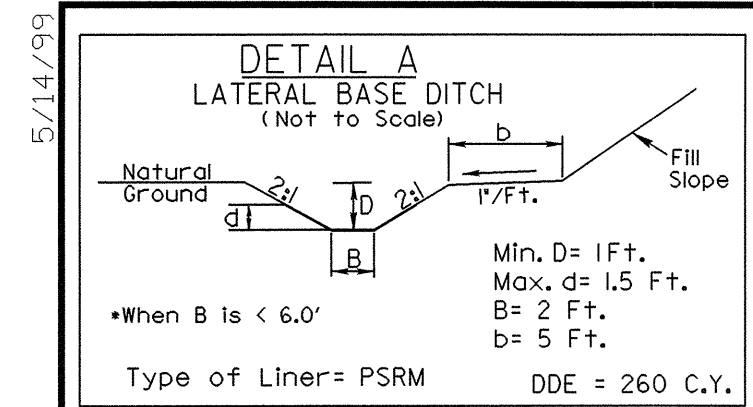
1591 MAIL SERVICES CENTER
RALEIGH NC 27699-1591
PHONE (919) 250-4128
FAX (919) 250-4119

Roger Worthington, P.E. UTILITIES SECTION ENGINEER
Carl Barclay, P.E. UTILITIES SQUAD LEADER PROJECT ENGINEER
Ali Kouchehi UTILITIES PROJECT DESIGNER

07-AUG-2007 13:23 R:\utilities\yrdy\ut\proj\14243_rdy_tsh_uol.dgn \$\$\$\$USERNAME\$\$\$\$

UTILITIES BY OTHERS

NOTE:
ALL PROPOSED UTILITY WORK SHOWN ON THIS SHEET WILL BE DONE BY OTHERS



FROM -L- STA. 18+00 TO STA. 19+43 LT
FROM -L- STA. 19+60 TO STA. 20+92 LT
FROM -L- STA. 17+60 TO STA. 19+55 RT

B4243-1
-BL- POT 5+00.00 =
-L- STA. 13+14.74 20.61' LT

BEGIN PROJECT B-4243
-L- POT STA. 16+00.00

BEGIN CONSTRUCTION
-L- POT STA. 14+80.00

-L- PT 15+20.35

-L- PI Sta 13+30.66
Δ = 23° 12' 11.8" (RT)
D = 6' 01' 52.1"
L = 384.73'
T = 195.04'
R = 950.00'

DETAIL B SPECIAL LATERAL BASE DITCH (Not to Scale). Shows a cross-section of a ditch with 'Natural Ground' on the left, 'Fill Slope' on the right, and 'Type of Liner = PSRM'. Dimensions include 'Min. D = 1 Ft.' and 'B = 2 Ft.'."/>

FROM -L- STA. 21+87 TO STA. 25+00 LT

DETAIL C SPECIAL LATERAL 'V' DITCH (Not to Scale). Shows a cross-section of a ditch with 'Natural Ground' on the left, 'Fill Slope' on the right, and 'Type of Liner = PSRM'. Dimensions include 'Min. D = 1 Ft.' and 'Max. d = 1.5 Ft.'."/>

FROM -L- STA. 14+00 TO STA. 17+00 RT

FROM -Y- STA. 18+90.70 TO STA. 13+60 LT

FROM -Y- STA. 18+90.70 TO STA. 13+60 LT

FROM -Y- STA. 18+90.70 TO STA. 13+60 LT

FROM -Y- STA. 18+90.70 TO STA. 13+60 LT

FROM -Y- STA. 18+90.70 TO STA. 13+60 LT

FROM -Y- STA. 18+90.70 TO STA. 13+60 LT

FROM -Y- STA. 18+90.70 TO STA. 13+60 LT

FROM -Y- STA. 18+90.70 TO STA. 13+60 LT

FROM -Y- STA. 18+90.70 TO STA. 13+60 LT

FROM -Y- STA. 18+90.70 TO STA. 13+60 LT

FROM -Y- STA. 18+90.70 TO STA. 13+60 LT

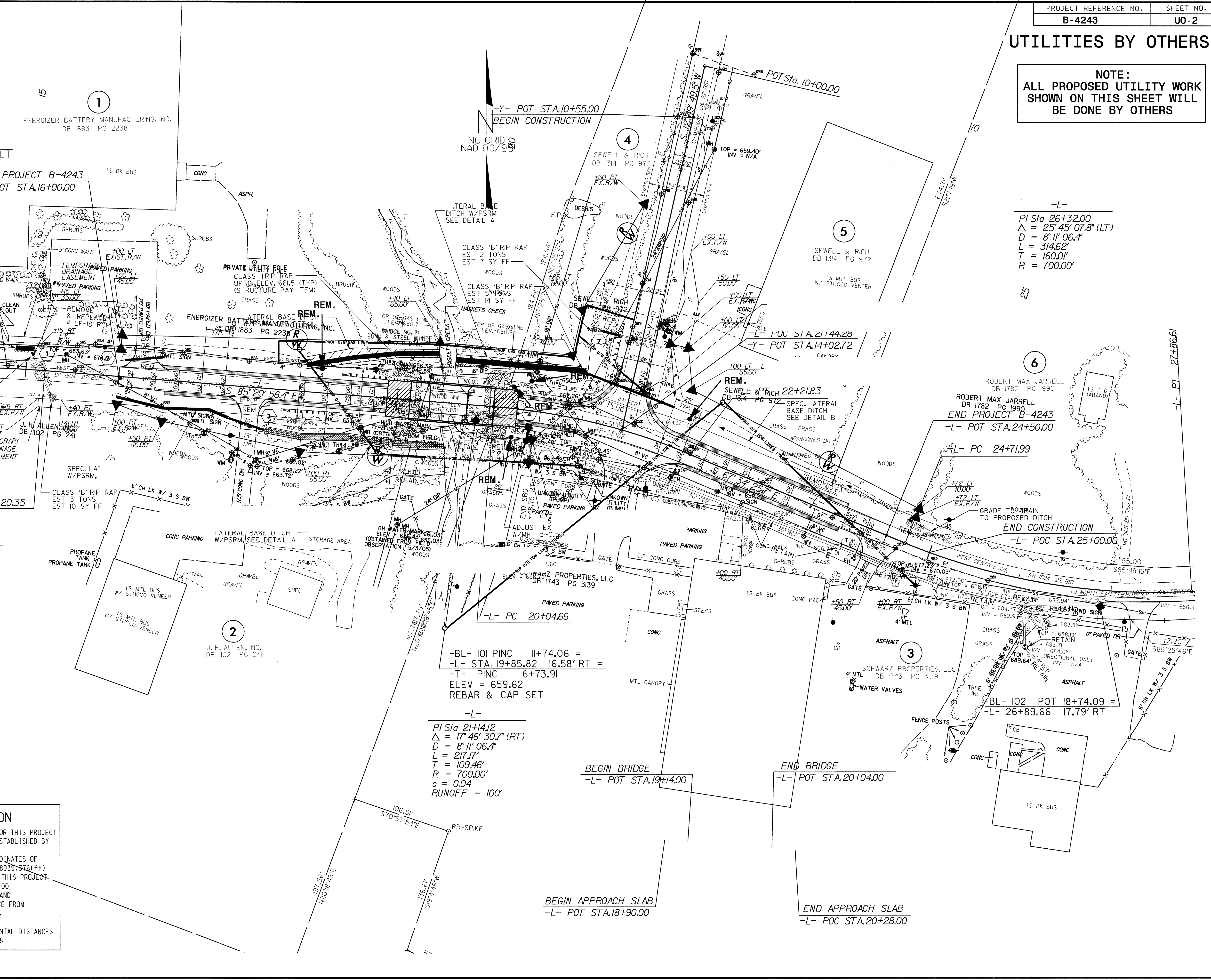
FROM -Y- STA. 18+90.70 TO STA. 13+60 LT

FROM -Y- STA. 18+90.70 TO STA. 13+60 LT

FROM -Y- STA. 18+90.70 TO STA. 13+60 LT

FROM -Y- STA. 18+90.70 TO STA. 13+60 LT

FROM -Y- STA. 18+90.70 TO STA. 13+60 LT



DESCRIPTION
THE LOCALIZED COORDINATE SYSTEM DEVELOPED FOR THIS PROJECT IS BASED ON THE STATE PLANE COORDINATES ESTABLISHED BY THE STATE PLANE COORDINATE MONUMENT "B4243-1" WITH NAD 83 STATE PLANE GRID COORDINATES OF NORTHING: 730494.097 (ft) EASTING: 1758939.376 (ft) THE AVERAGE COMBINED GRID FACTOR USED ON THIS PROJECT (GROUND TO GRID) IS: 0.99983100 THE N.T.S. LAMBERT GRID BEARING AND LOCALIZED HORIZONTAL GROUND DISTANCE FROM "B4243-1" TO -L- STATION IS FROM -Y- STA. 18+90.70 TO STA. 13+60 LT 888.09' ALL LINEAR DIMENSIONS ARE LOCALIZED HORIZONTAL DISTANCES VERTICAL DATUM USED IS NAVD 88

08-JUN-2007 12:10
Utilities.dwg
B4243-rdy.uol_psh.dgn