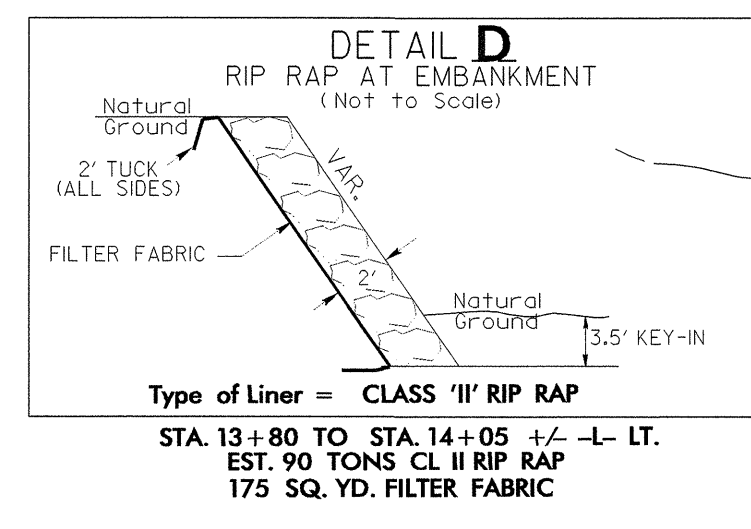
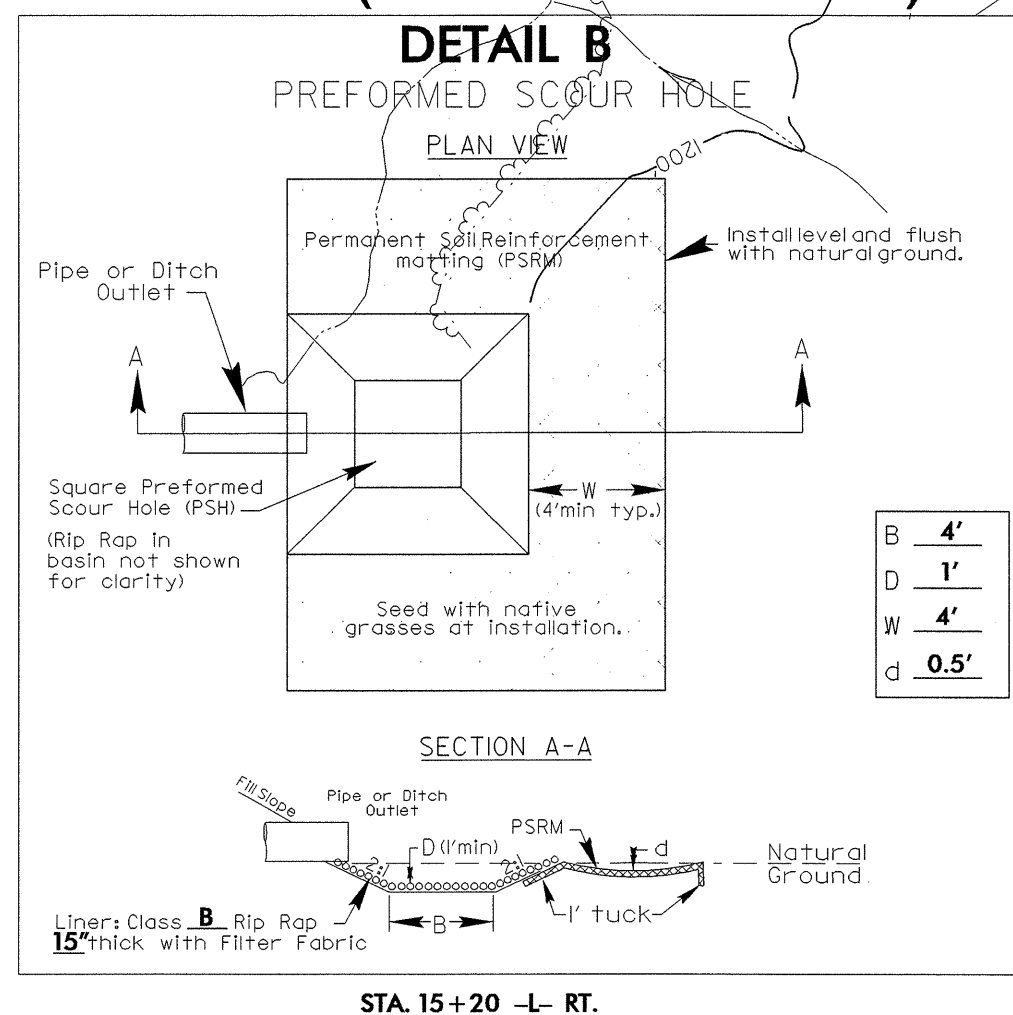
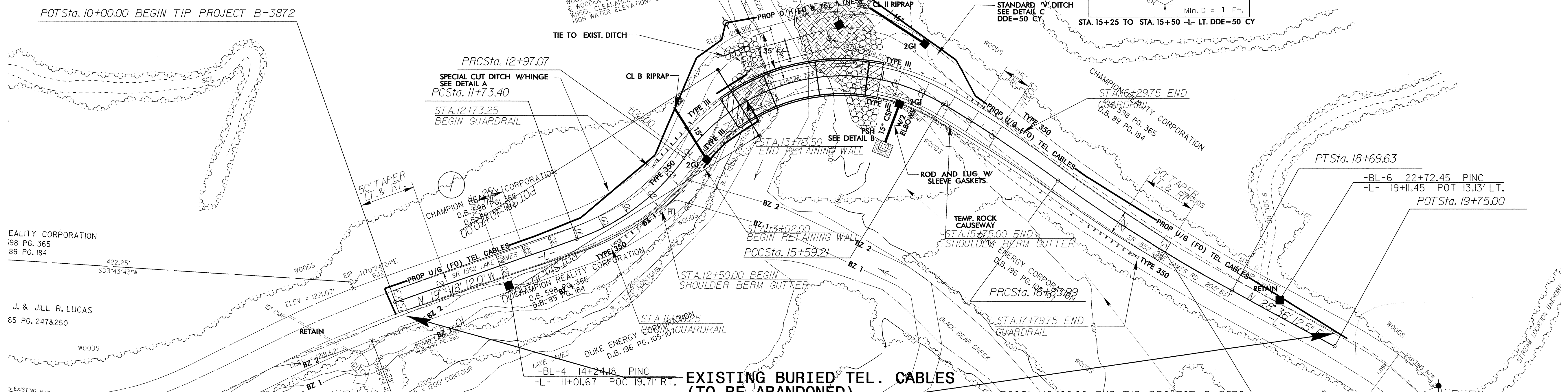
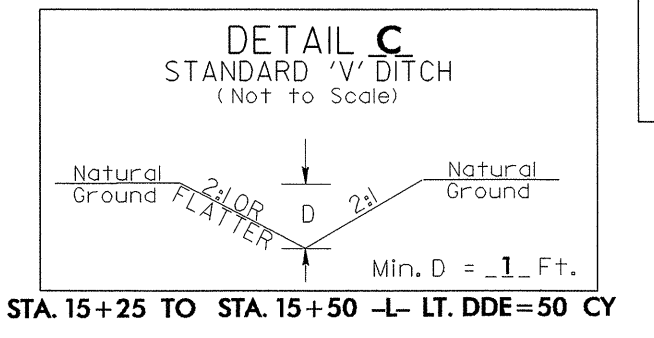
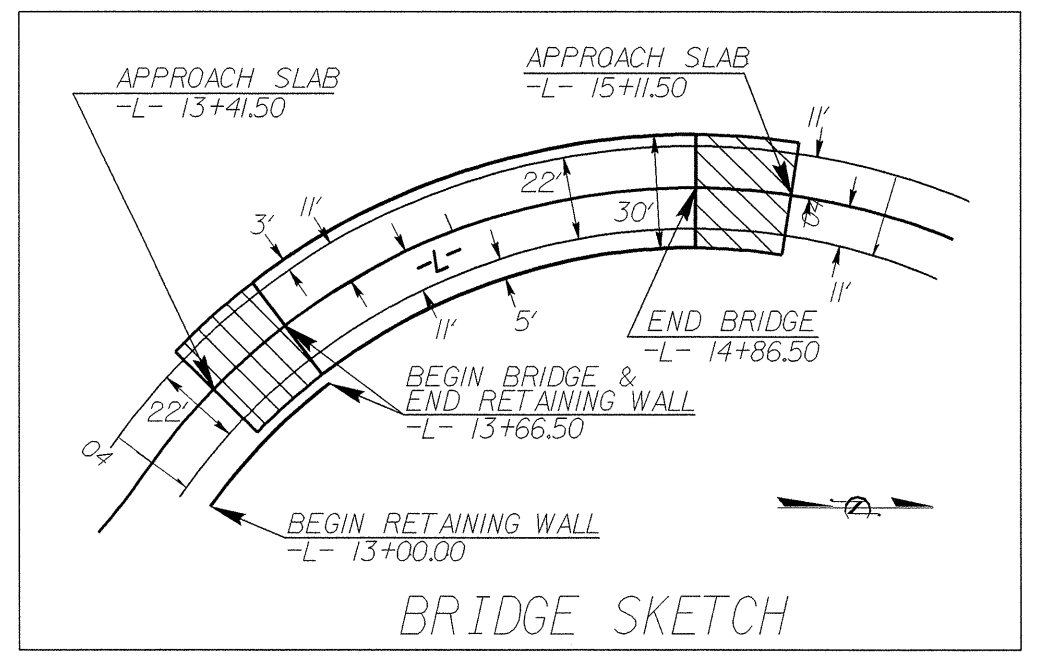
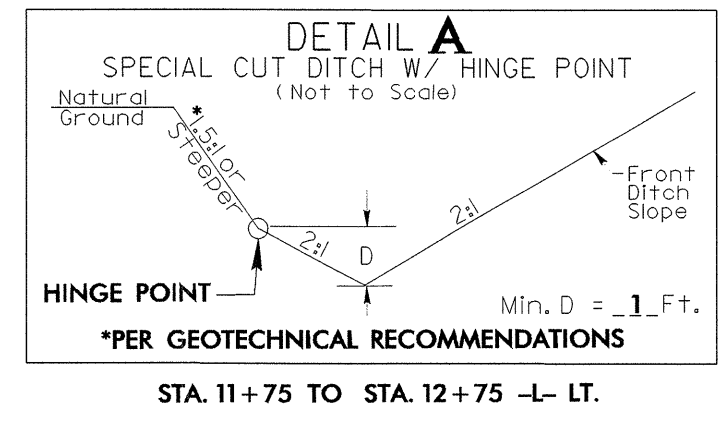


**UTILITIES BY OTHERS**

**NOTE:**  
ALL PROPOSED UTILITY WORK SHOWN ON THIS SHEET WILL BE DONE BY OTHERS

**DATUM DESCRIPTION**  
THE LOCALIZED COORDINATE SYSTEM DEVELOPED FOR THIS PROJECT IS BASED ON THE STATE PLANE COORDINATES ESTABLISHED BY NCDOT FOR MONUMENT "B3872-1" WITH NAD 1983/95 STATE PLANE GRID COORDINATES OF NORTHING: 740563.597611 EASTING: 1119411.229011 THE AVERAGE COMBINED GRID FACTOR USED ON THIS PROJECT (GROUND TO GRID) IS: 0.9998690 THE N.C. LAMBERT GRID BEARING AND LOCALIZED HORIZONTAL GROUND DISTANCE FROM "B3872-1" TO L- STATION 10+00.00 IS 1638.173 FEET AT A BEARING OF N 5° 21' 53.00" E ALL LINEAR DIMENSIONS ARE LOCALIZED HORIZONTAL DISTANCES VERTICAL DATUM USED IS NAD 88

704.44' N0°08'57"E



Station	Delta	Length	Tangent	Radius
PI Sta 12+37.28	Δ = 35° 25' 40.0" (LT)	L = 123.67'	T = 63.88'	R = 200.00'
PI Sta 14+59.76	Δ = 85° 49' 29.7" (RT)	L = 262.14'	T = 162.69'	R = 175.00'
PI Sta 16+21.64	Δ = 5° 06' 25.1" (RT)	L = 124.79'	T = 62.43'	R = 1,400.00'
PI Sta 17+76.95	Δ = 7° 35' 50.3" (LT)	L = 185.64'	T = 92.96'	R = 1,400.00'

STA. 15+20 -L- RT.