

TIP PROJECT: B-4253

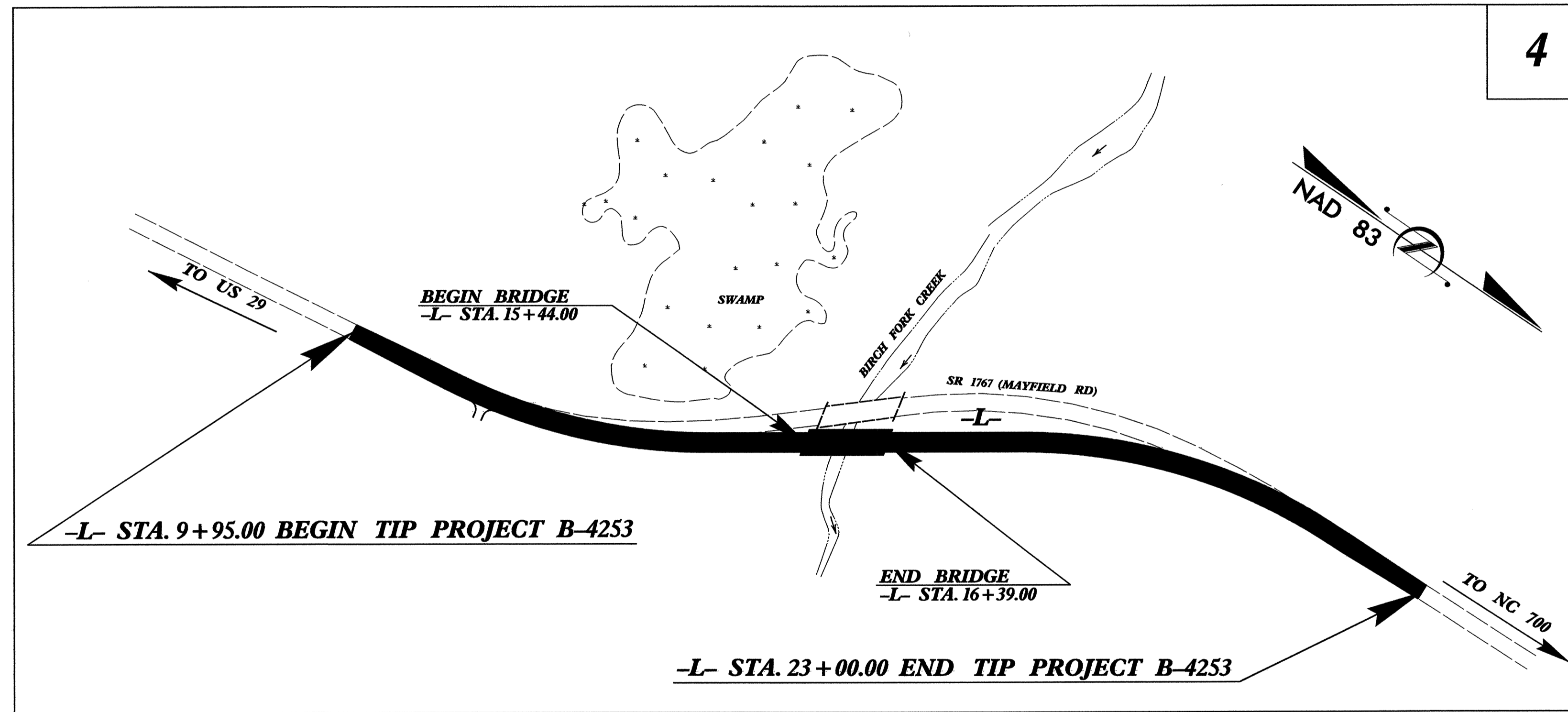
STATE OF NORTH CAROLINA
DIVISION OF HIGHWAYS

PLAN FOR PROPOSED
HIGHWAY EROSION CONTROL

ROCKINGHAM COUNTY

**LOCATION: BRIDGE NO. 109 OVER BIRCH FORK CREEK
AND APPROACHES ON SR 1767 (MAYFIELD ROAD)**

TYPE OF WORK: GRADING, PAVING, DRAINAGE, AND STRUCTURE



STATE	STATE PROJECT REFERENCE NO.	SHEET NO.	TOTAL SHEETS
N.C.	B-4253	EC-1	
STATE PROJ. NO.	F.A. PROJ. NO.	DESCRIPTION	

EROSION AND SEDIMENT CONTROL MEASURES

Std. #	Description	Symbol
	Streambank Reforestation	
1630.03	Temporary Silt Ditch	
1630.05	Temporary Diversion	
1605.01	Temporary Silt Fence	
1606.01	Special Sediment Control Fence	
1622.01	Temporary Berms and Slope Drains	
1630.01	Riser Basin	
1630.02	Silt Basin Type B	
1635.01	Temporary Rock Silt Check Type-A	
	Temporary Rock Silt Check Type-B	
1634.01	Temporary Rock Sediment Dam Type-A	
1634.02	Temporary Rock Sediment Dam Type-B	
1635.01	Rock Pipe Inlet Sediment Trap Type-A	
1635.02	Rock Pipe Inlet Sediment Trap Type-B	
1630.04	Stilling Basin	
	Rock Inlet Sediment Trap:	
1632.01	Type A	
1632.02	Type B	
1632.03	Type C	

**THIS PROJECT CONTAINS
EROSION CONTROL PLANS
FOR CLEARING AND
GRUBBING PHASE OF
CONSTRUCTION.**

GRAPHIC SCALE

0

PLANS

0

PROFILE (HORIZONTAL)

0

PROFILE (VERTICAL)

ROADSIDE ENVIRONMENTAL UNIT
DIVISION OF HIGHWAYS
STATE OF NORTH CAROLINA

Prepared In the Office of:
ROADSIDE ENVIRONMENTAL UNIT
1 South Wilmington St.
Raleigh, NC 27611

2006 STANDARD SPECIFICATIONS

Roadway Standard Drawings

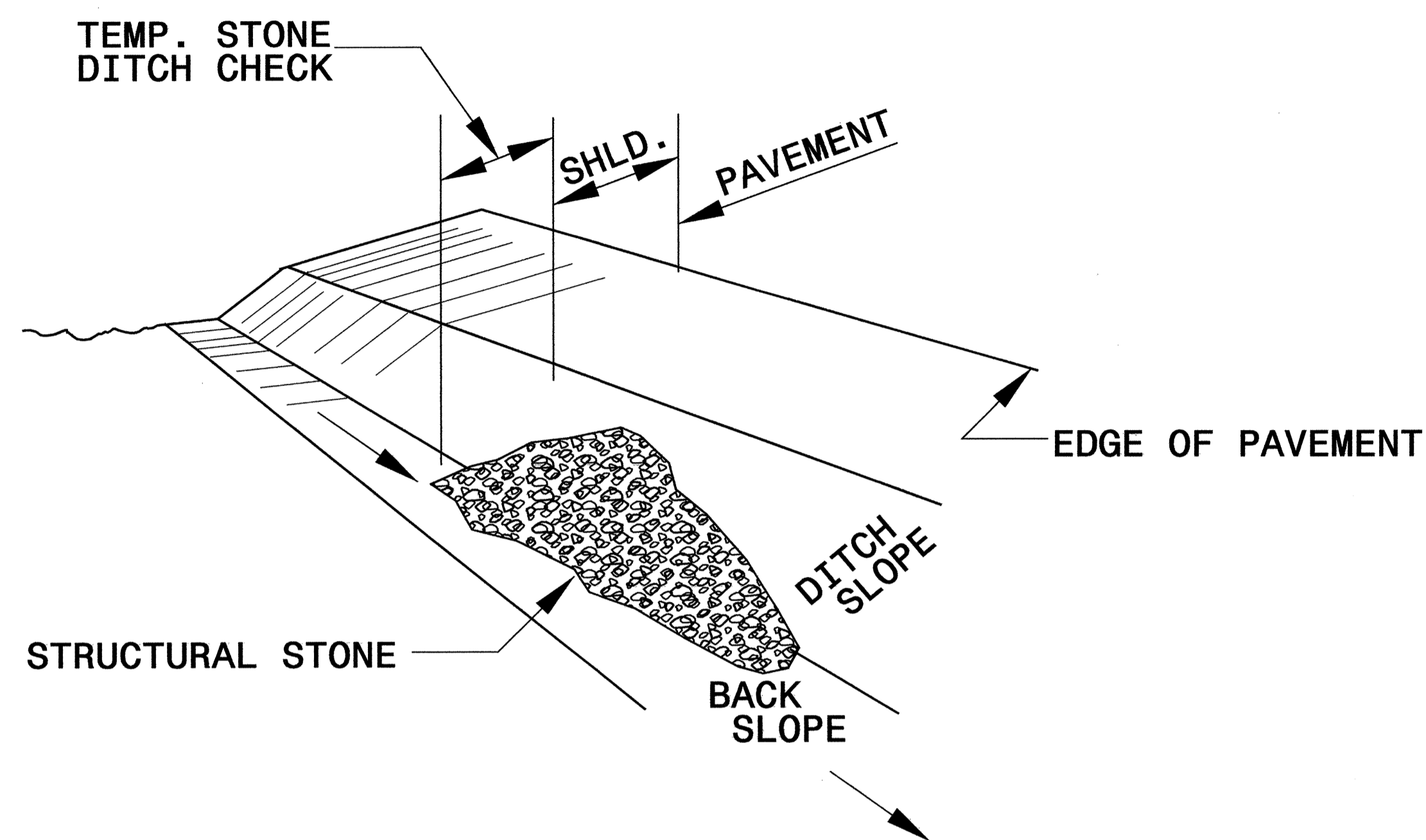
The following roadway english standards as appear in "Roadway Standard Drawings"- Roadway Design Unit - N. C. Department of Transportation - Raleigh, N. C., dated July 18, 2006 and the latest revision thereto are applicable to this project and by reference hereby are considered a part of these plans.

1605.01 Temporary Silt Fence	1632.03 Rock Inlet Sediment Trap Type C
1607.01 Gravel Construction Entrance	1633.01 Temporary Rock Silt Check Type A
1630.02 Silt Basin Type B	1634.02 Temporary Rock Sediment Dam Type B
1630.03 Temporary Silt Ditch	1635.02 Rock Pipe Inlet Sediment Trap Type B

24-MAY-2006 10:46
P:\app\proj\2006\1046\1046\roadside\environmental\design\B4253.rdw, tsh, dgn
NCHAR v AT REV21425

PROJECT REFERENCE NO. B-4253	SHEET NO. EC-2
RW SHEET NO.	
ROADWAY DESIGN ENGINEER	HYDRAULICS ENGINEER

TEMPORARY ROCK SILT CHECK TYPE 'B' DETAIL

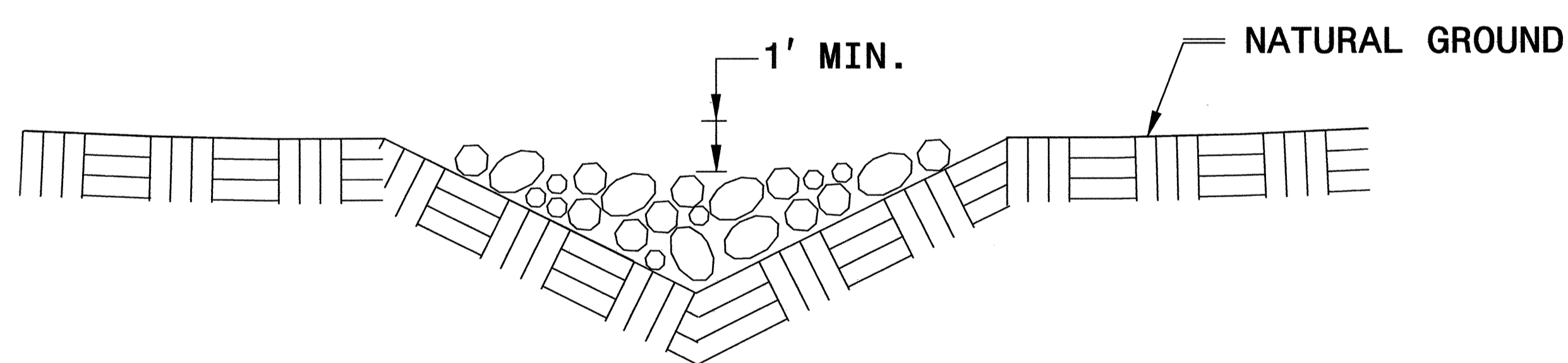


ISOMETRIC VIEW

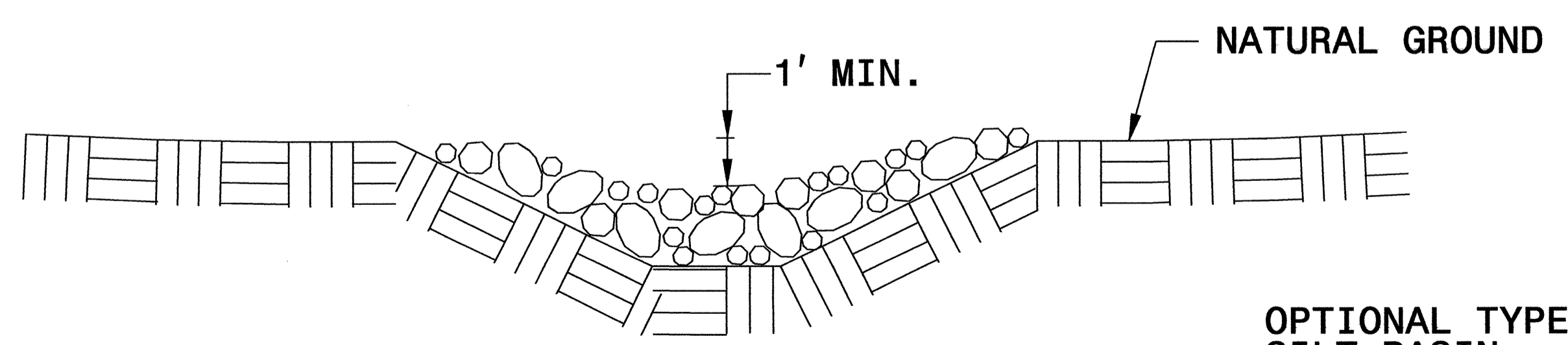
NOTES:

USE CLASS 'B' EROSION CONTROL STONE FOR STRUCTURAL STONE.

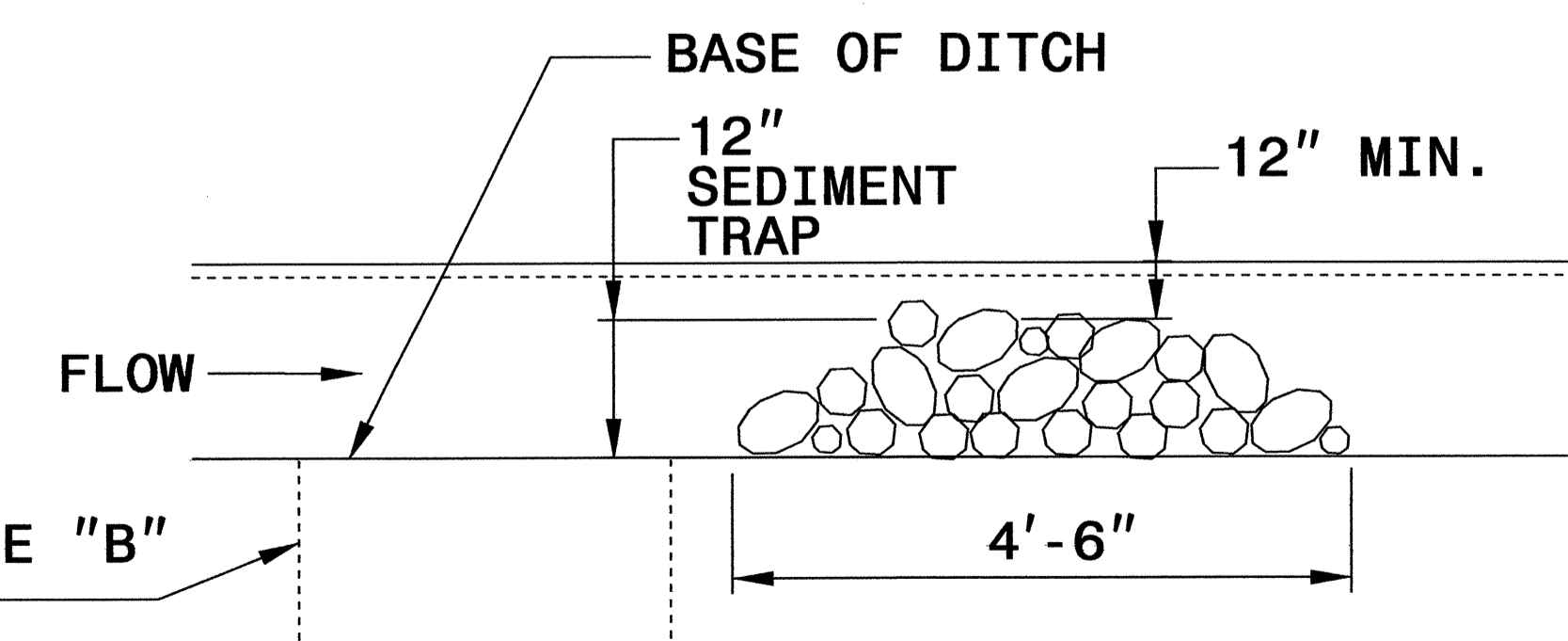
THE ENGINEER MAY DIRECT THE OPTION OF CLASS "A" STONE FOR SITES HAVING LESS THAN ONE (1) ACRE DRAINAGE AREA AND A DITCH GRADE LESS THAN 3%.



CROSS SECTION VEE DITCH



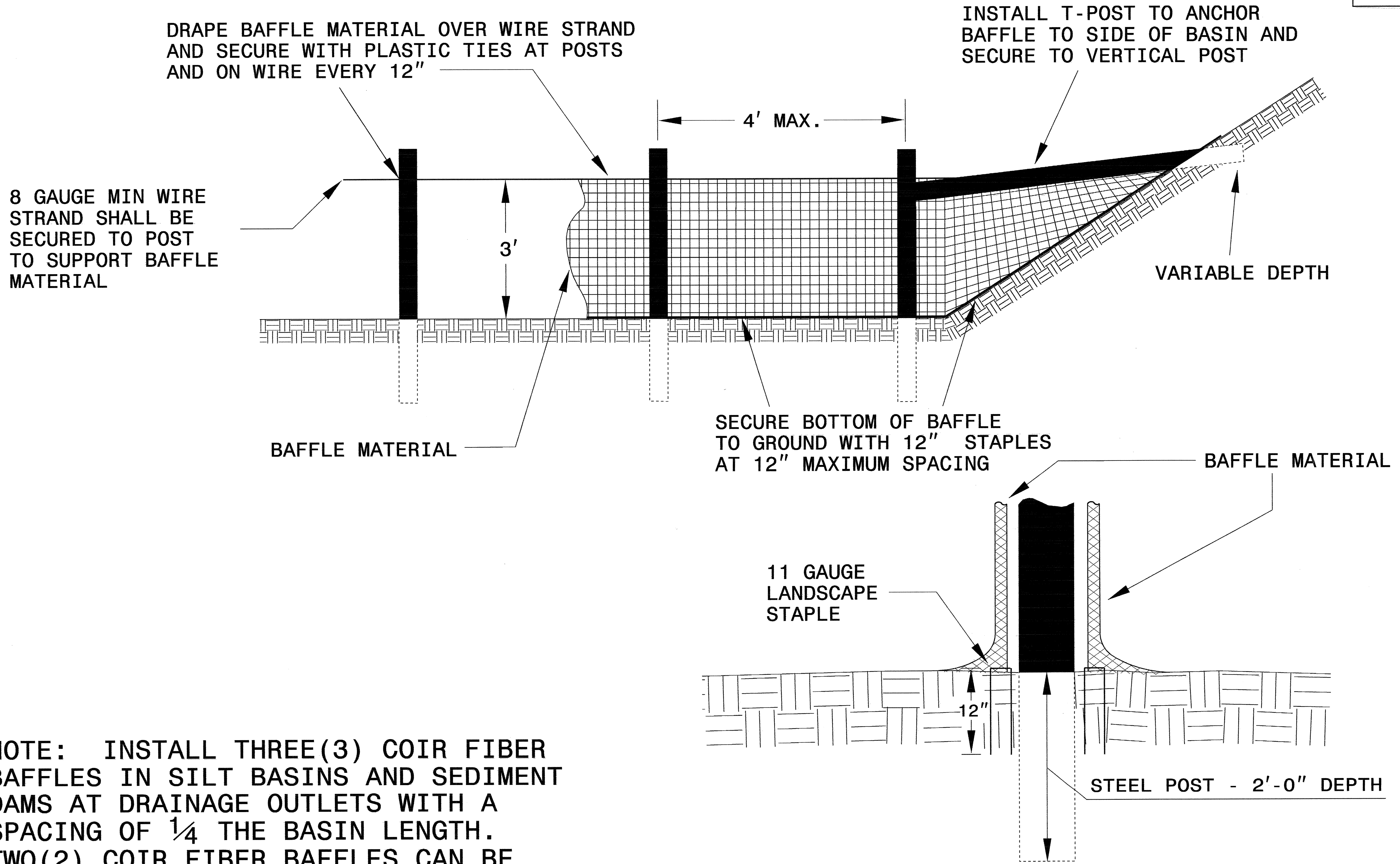
CROSS SECTION TRAPEZOIDAL DITCH



ELEVATION VIEW

PROJECT REFERENCE NO. B-4253	SHEET NO. EC-2A
RW SHEET NO.	
ROADWAY DESIGN ENGINEER	HYDRAULICS ENGINEER

COIR FIBER BAFFLE DETAIL



NOTE: INSTALL THREE(3) COIR FIBER BAFFLES IN SILT BASINS AND SEDIMENT DAMS AT DRAINAGE OUTLETS WITH A SPACING OF $\frac{1}{4}$ THE BASIN LENGTH. TWO(2) COIR FIBER BAFFLES CAN BE INSTALLED IN SILT BASINS AND DAMS LESS THAN 20 FT. IN LENGTH WITH A SPACING OF $\frac{1}{3}$ THE BASIN LENGTH.

BAFFLE MATERIAL SHALL BE SECURED TO THE BOTTOM AND SIDES OF BASIN USING 12" LANDSCAPE STAPLES

CLEARING AND GRUBBING
EROSION CONTROL FOR
CONSTRUCTION SHEET 4

NOTE:

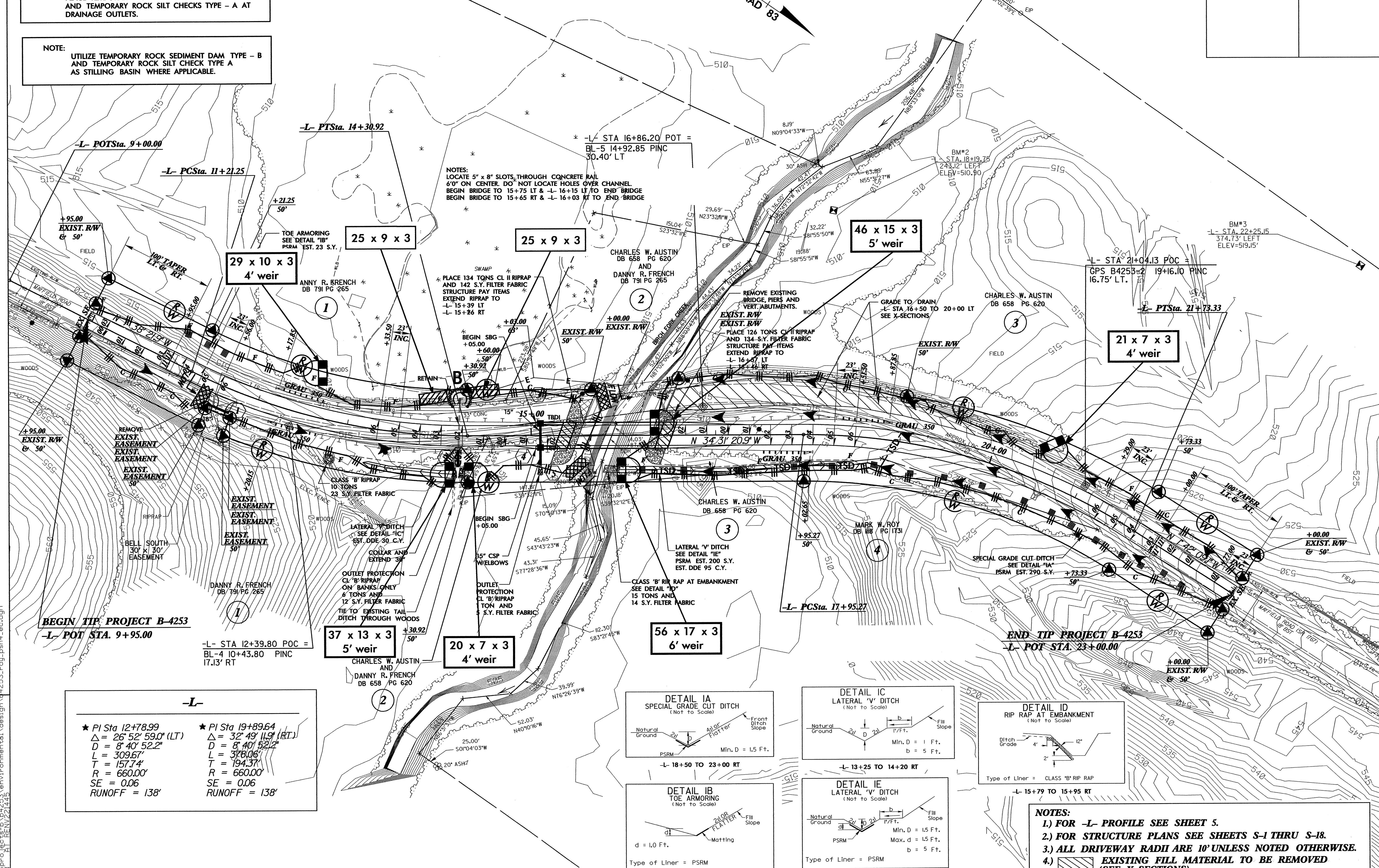
PLACE TEMPORARY ROCK SEDIMENT DAMS TYPE - B
AND TEMPORARY ROCK SILT CHECKS TYPE - A AT
DRAINAGE OUTLETS.

NOTE:

UTILIZE TEMPORARY ROCK SEDIMENT DAM TYPE - B
AND TEMPORARY ROCK SILT CHECK TYPE A
AS STILLING BASIN WHERE APPLICABLE.

★ DESIGN EXCEPTIONS FOR HORIZONTAL ALIGNMENT
AND HORIZONTAL STOPPING SIGHT DISTANCE
ARE REQUIRED.

PROJECT REFERENCE NO. B-4253	SHEET NO. EC-4/CONST.4
RW SHEET NO.	
ROADWAY DESIGN ENGINEER	HYDRAULICS ENGINEER

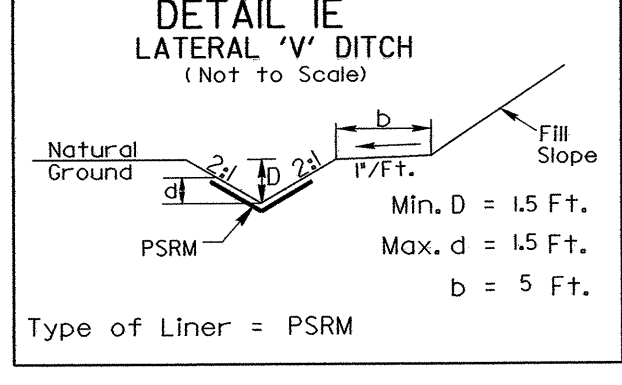
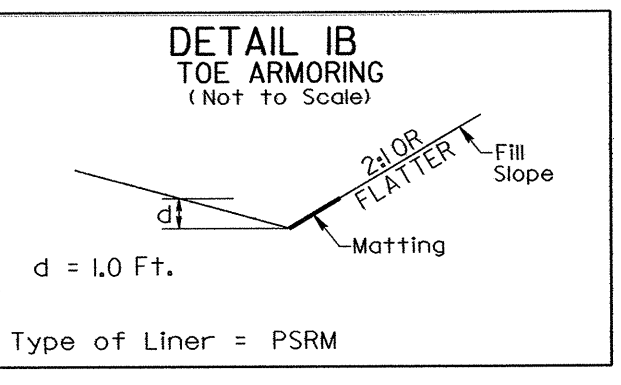
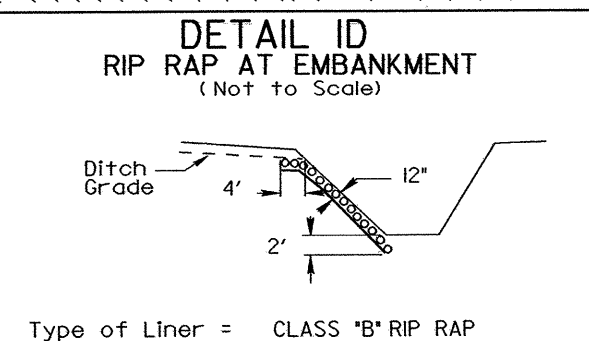
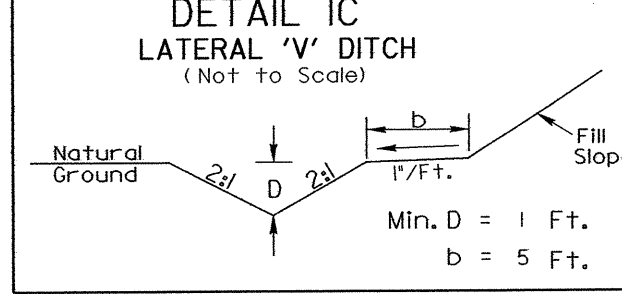
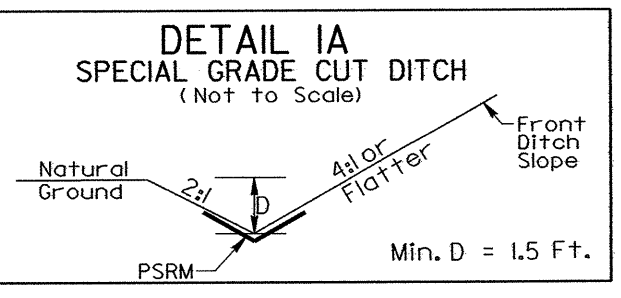


BEGIN TIP PROJECT B-4253
-L- POT STA. 9+95.00

END TIP PROJECT B-4253
-L- POT STA. 23+00.00

-L-

★ PI Sta 12+78.99 Δ = 26° 52' 59.0" (LT) D = 8' 40" 52.2" L = 309.67' T = 157.74' R = 660.00' SE = 0.06 RUNOFF = 138'	★ PI Sta 19+89.64 Δ = 32° 49' 11.9" (RT) D = 8' 40" 52.2" L = 378.06' T = 194.37' R = 660.00' SE = 0.06 RUNOFF = 138'
--	--



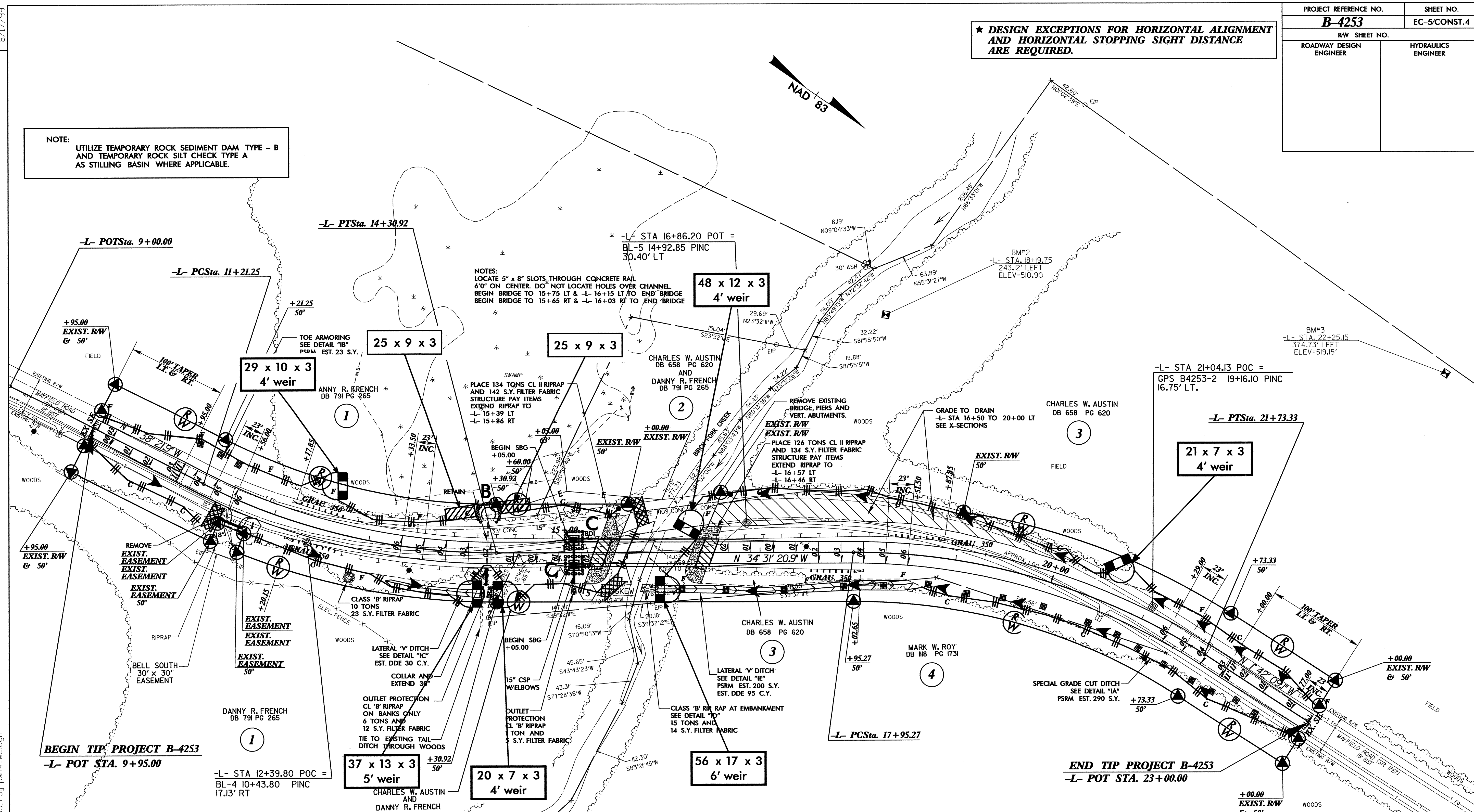
NOTES:

- 1.) FOR -L- PROFILE SEE SHEET 5.
- 2.) FOR STRUCTURE PLANS SEE SHEETS S-1 THRU S-18.
- 3.) ALL DRIVEWAY RADII ARE 10' UNLESS NOTED OTHERWISE.
- 4.) EXISTING FILL MATERIAL TO BE REMOVED (SEE X-SECTIONS).

24-MAY-2006 13:48
g:\t\ppro\ec\sb-b\4253\environmental\design\4253_rdy_psh4_ec.dgn
RICHAN AT BERNY221445

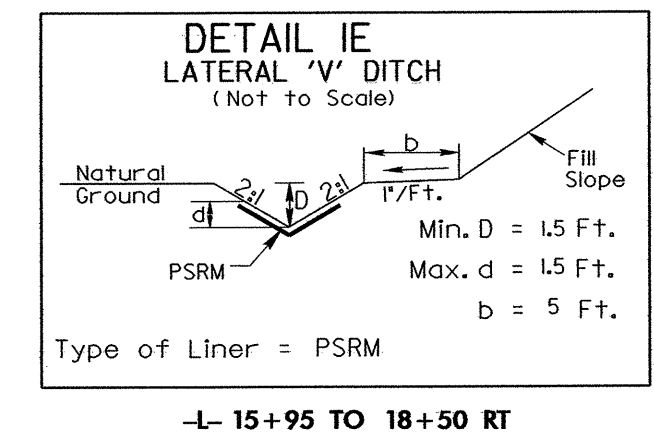
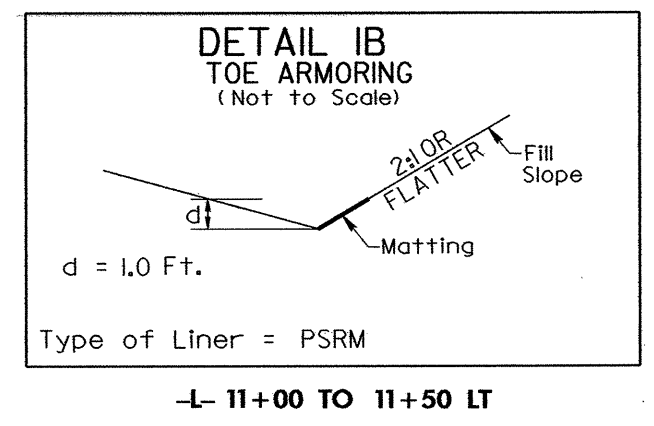
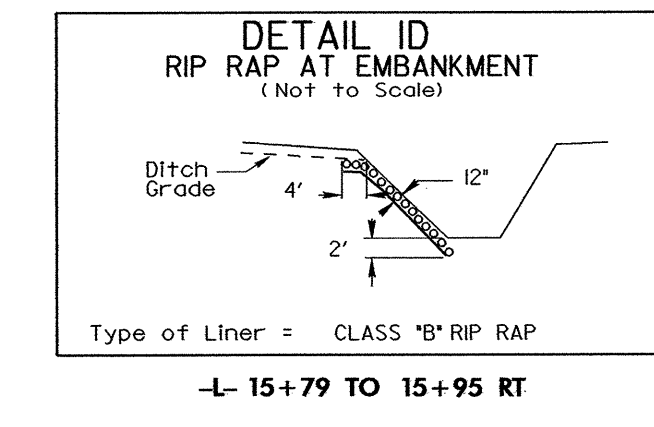
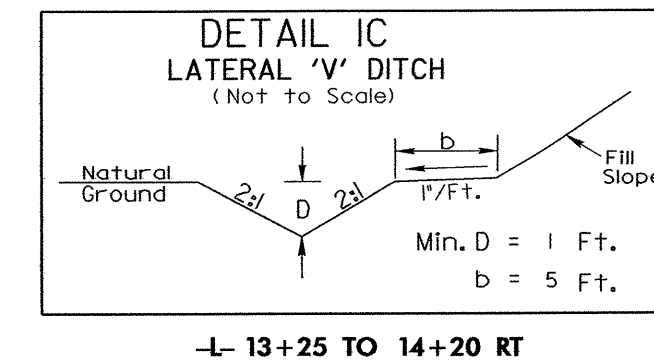
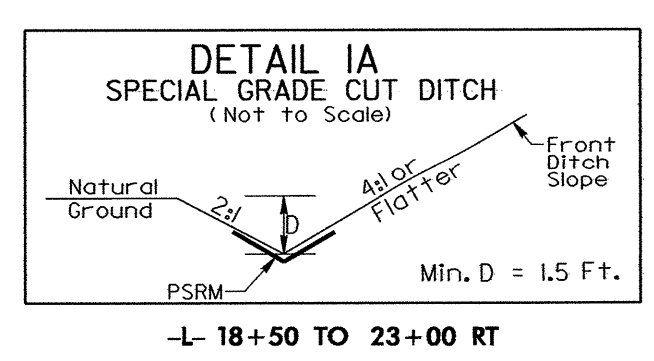
*** DESIGN EXCEPTIONS FOR HORIZONTAL ALIGNMENT AND HORIZONTAL STOPPING SIGHT DISTANCE ARE REQUIRED.**

NOTE:
UTILIZE TEMPORARY ROCK SEDIMENT DAM TYPE - B AND TEMPORARY ROCK SILT CHECK TYPE A AS STILLING BASIN WHERE APPLICABLE.



-L-

<p>* PI Sta 12+78.99 $\Delta = 26^\circ 52' 59.0''$ (LT) $D = 8' 40' 52.2''$ $L = 309.67'$ $T = 157.74'$ $R = 660.00'$ $SE = 0.06$ $RUNOFF = 138'$</p>	<p>* PI Sta 19+89.64 $\Delta = 32^\circ 49' 11.9''$ (RT) $D = 8' 40' 52.2''$ $L = 378.06'$ $T = 194.37'$ $R = 660.00'$ $SE = 0.06$ $RUNOFF = 138'$</p>
--	--



NOTES:

- 1.) FOR -L- PROFILE SEE SHEET 5.
- 2.) FOR STRUCTURE PLANS SEE SHEETS S-1 THRU S-18.
- 3.) ALL DRIVEWAY RADII ARE 10' UNLESS NOTED OTHERWISE.
- 4.) EXISTING FILL MATERIAL TO BE REMOVED (SEE X-SECTIONS).

8/17/99
 REVISIONS
 24-MAY-2006 14:10
 91:\ppp\o\ec\ec-b\4253\environmental\design\4253_rdy_psh4_ec.dgn
 RICHAN AT REV 221445