

STATE OF NORTH CAROLINA
DIVISION OF HIGHWAYS

STATE PROJECT REFERENCE NO.	SHEET NO.
B-3900	TCP-1

**PLAN FOR PROPOSED
TRAFFIC CONTROL, MARKING & DELINEATION
ROCKINGHAM COUNTY**

B-3900

ROADWAY STANDARD DRAWINGS

THE FOLLOWING ROADWAY STANDARDS AS APPEAR IN "ROADWAY STANDARD DRAWINGS"- PROJECT SERVICES UNIT-N.C. DEPARTMENT OF TRANSPORTATION-RALEIGH, N.C., DATED JULY 2006 ARE APPLICABLE TO THIS PROJECT AND BY REFERENCE HEREBY ARE CONSIDERED A PART OF THESE PLANS:

STD. NO.	TITLE
1101.03	TEMPORARY ROAD CLOSURES
1101.11	TRAFFIC CONTROL DESIGN TABLES
1110.01	STATIONARY WORK ZONE SIGNS
1145.01	BARRICADES TYPE III
1205.01	PAVEMENT MARKINGS - LINE TYPES & OFFSETS
1205.02	PAVEMENT MARKINGS - 2 LANE & MULTILANE ROADWAYS
1261.01	GUARDRAIL & BARRIER DELINEATOR SPACING
1261.02	GUARDRAIL & BARRIER DELINEATOR TYPES
1262.01	GUARDRAIL END DELINEATION

INDEX OF SHEETS

SHEET NO.	TITLE
TCP-1	LIST OF APPLICABLE ROADWAY STANDARD DRAWINGS, LEGEND, FINAL PAVEMENT MARKING SCHEDULE AND INDEX OF SHEETS
TCP-2	PROJECT NOTES AND PHASING
TCP-3	ROAD CLOSED SIGNING AND BARRICADE PLACEMENT
TCP-4	DETOUR ROUTE
TCP-5	DETOUR SIGN DESIGN

LEGEND

- GENERAL**
- DIRECTION OF TRAFFIC FLOW
 - NORTH ARROW
 - PROPOSED PVMT. EXIST. PVMT.
 - WORK AREA
 - REMOVAL OF EXISTING PAVEMENT
- TRAFFIC CONTROL DEVICES**
- TYPE I BARRICADE
 - TYPE II BARRICADE
 - TYPE III BARRICADE
 - CONE
 - DRUM SKINNY DRUM
 - FLASHING ARROW PANEL (TYPE C)
 - STATIONARY SIGN
 - PORTABLE SIGN
 - STATIONARY OR PORTABLE SIGN
 - CRASH CUSHION
 - CHANGEABLE MESSAGE SIGN
 - TRUCK MOUNTED IMPACT ATTENUATOR (TMIA)
 - POLICE
 - FLAGGER
- PAVEMENT MARKINGS**
- CRYSTAL/CRYSTAL PAVEMENT MARKER
 - YELLOW/YELLOW PAVEMENT MARKER
 - CRYSTAL/RED PAVEMENT MARKER
 - PAVEMENT MARKING SYMBOLS

TIP PROJECT:

23-MAY-2007 07:51 \\dot\dfsroot\01\proj\hiprojects-b\3900\traffic\trafficcontrol\tcp\revised_top_sheets_unpaved_041707\B3900_unpaved_top-l.dgn at WZTC22439 alyudmi

APPROVED: _____ DATE: _____	PLAN PREPARED BY: N.C.D.O.T. WORK ZONE TRAFFIC CONTROL UNIT
	J. STUART BOURNE, P.E. TRAFFIC CONTROL ENGINEER
	JOSEPH ISHAK, P.E. TRAFFIC CONTROL PROJECT ENGINEER
	J. PORTANOVA, P.E. TRAFFIC CONTROL PROJECT DESIGN ENGINEER
	ALLA LYUDMIRSKAYA TRAFFIC CONTROL DESIGN ENGINEER / TECHNICIAN

PROJECT NOTES

ADAPT THE TRAFFIC CONTROL PLANS, WHEN DIRECTED BY THE ENGINEER, TO MEET FIELD CONDITIONS TO PROVIDE SAFE AND EFFICIENT TRAFFIC MOVEMENT. CHANGES MAY BE REQUIRED WHEN PHYSICAL DIMENSIONS IN THE DETAIL DRAWINGS, STANDARD DETAILS AND ROADWAY DETAILS ARE NOT ATTAINABLE, OR RESULT IN DUPLICATE, OR UNDESIRE OVERLAPPING OF DEVICES. MODIFICATION MAY INCLUDE: MOVING, SUPPLEMENTING, COVERING OR REMOVAL OF DEVICES.

THE FOLLOWING GENERAL NOTES APPLY AT ALL TIMES FOR THE DURATION OF THE CONSTRUCTION PROJECT, EXCEPT WHEN OTHERWISE NOTED IN THE PLAN, OR DIRECTED BY THE ENGINEER.

TRAFFIC PATTERN ALTERATIONS

- A) NOTIFY THE ENGINEER TWENTY ONE (21) CALENDAR DAYS PRIOR TO ANY TRAFFIC PATTERN ALTERATION.

SIGNING

- B) STATE FORCES WILL BE RESPONSIBLE FOR PERMANENT SIGNING WITHIN THE PROJECT LIMITS.
- C) PROVIDE DETOUR SIGNING WITHIN AND/OR OFF THE PROJECT LIMITS.
- D) COVER OR REMOVE ALL DETOUR SIGNS WITHIN AND/OR OFF THE PROJECT LIMITS WHEN A DETOUR IS NOT IN OPERATION.
- E) ENSURE ALL NECESSARY SIGNING IS IN PLACE PRIOR TO ALTERING ANY TRAFFIC PATTERN.

TRAFFIC CONTROL DEVICES

- F) PLACE TYPE III BARRICADES, WITH "ROAD CLOSED" SIGN R11-2 ATTACHED, OF SUFFICIENT LENGTH TO CLOSE ENTIRE ROADWAY. PLACE TYPE III BARRICADES, WITH "ROAD CLOSED TO THRU TRAFFIC" SIGN R11-4 AND "DETOUR" SIGN M4-10 ATTACHED. STAGGER OR OVERLAP BARRICADES TO ALLOW FOR INGRESS OR EGRESS.

PHASING

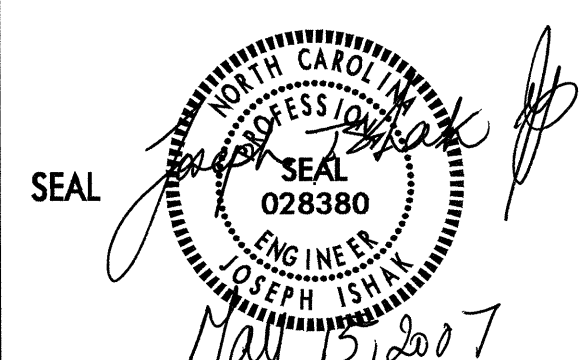
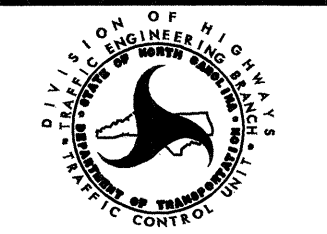
STEP 1: USING SHEETS TCP-3, TCP-4 & TCP-5, INSTALL DETOUR SIGNS, PLACE TYPE III BARRICADES TO CLOSE SR 1376 (PAW PAW RD.) TO THROUGH TRAFFIC, AND DETOUR TRAFFIC ONTO PROPOSED DETOUR.

STEP 2: AWAY FROM TRAFFIC, COMPLETE THE FOLLOWINGS:

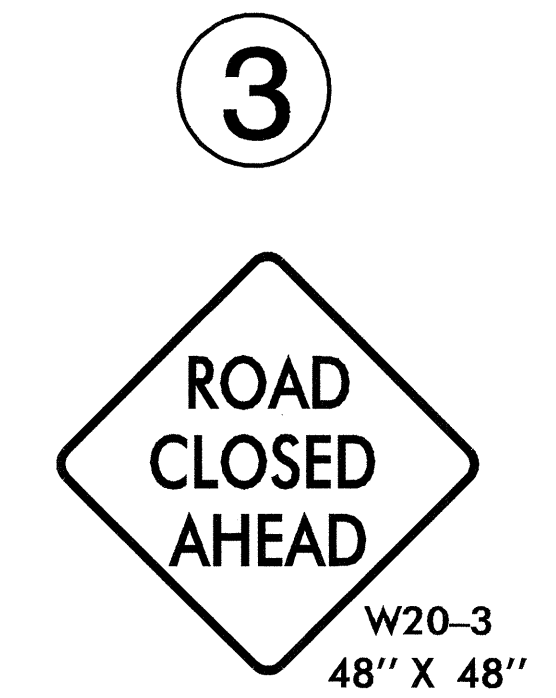
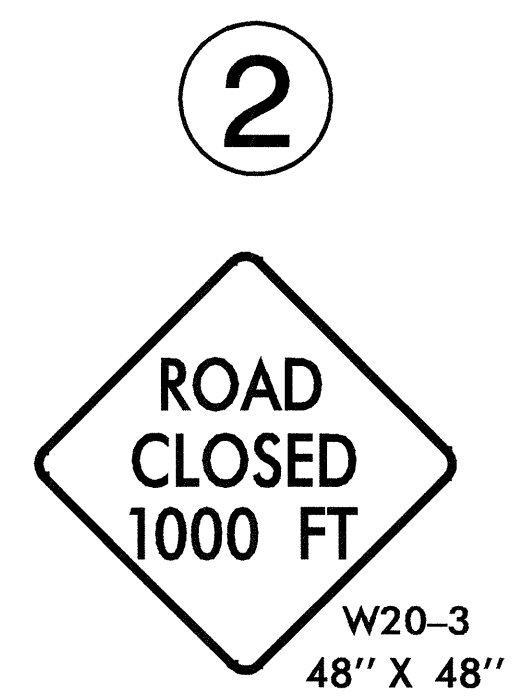
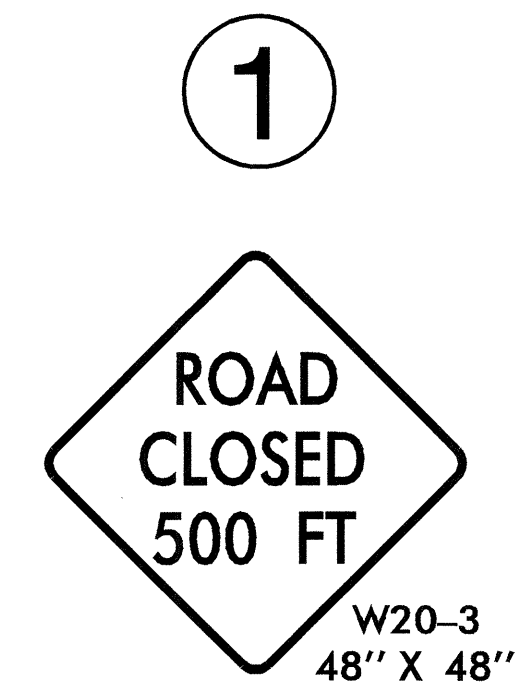
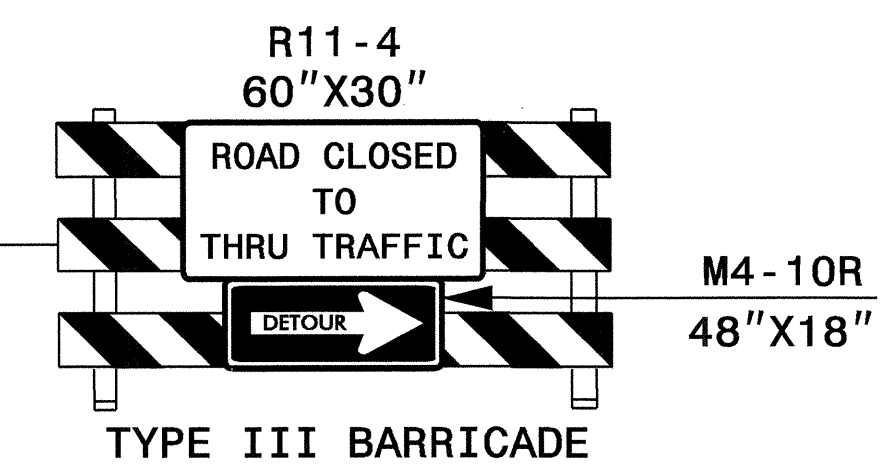
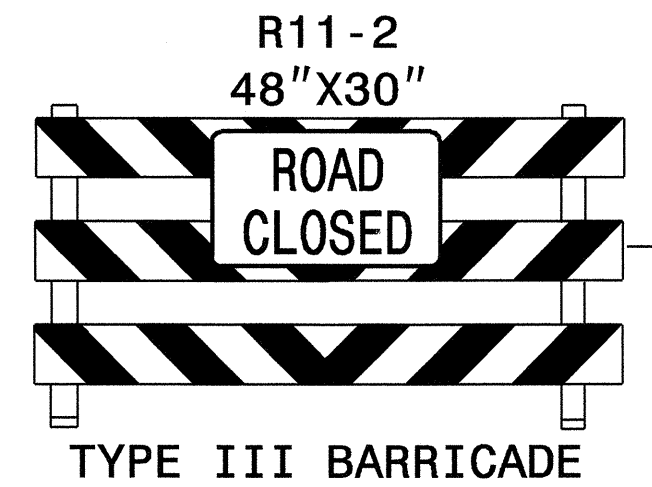
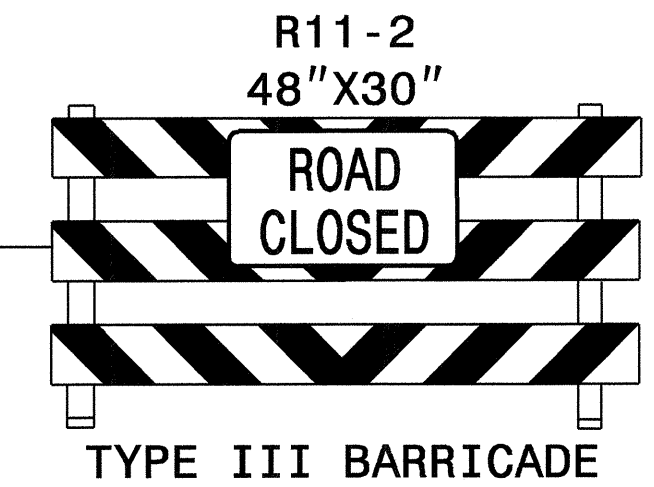
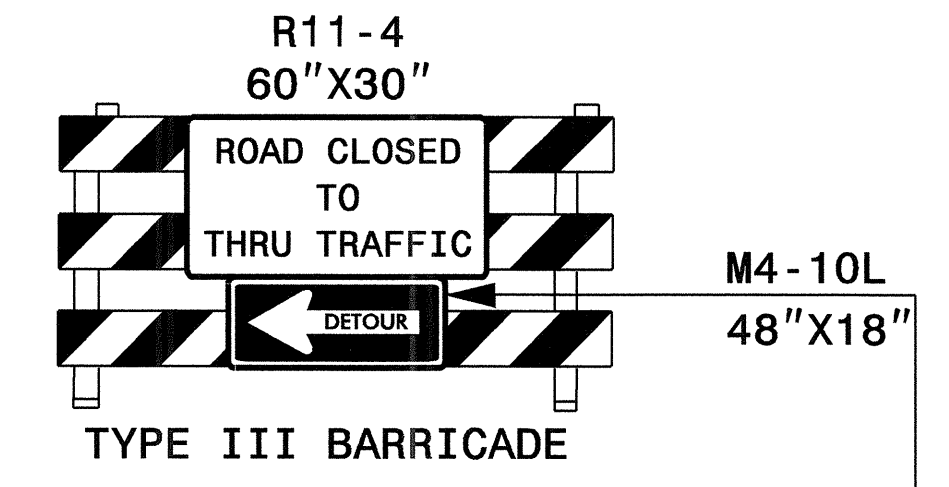
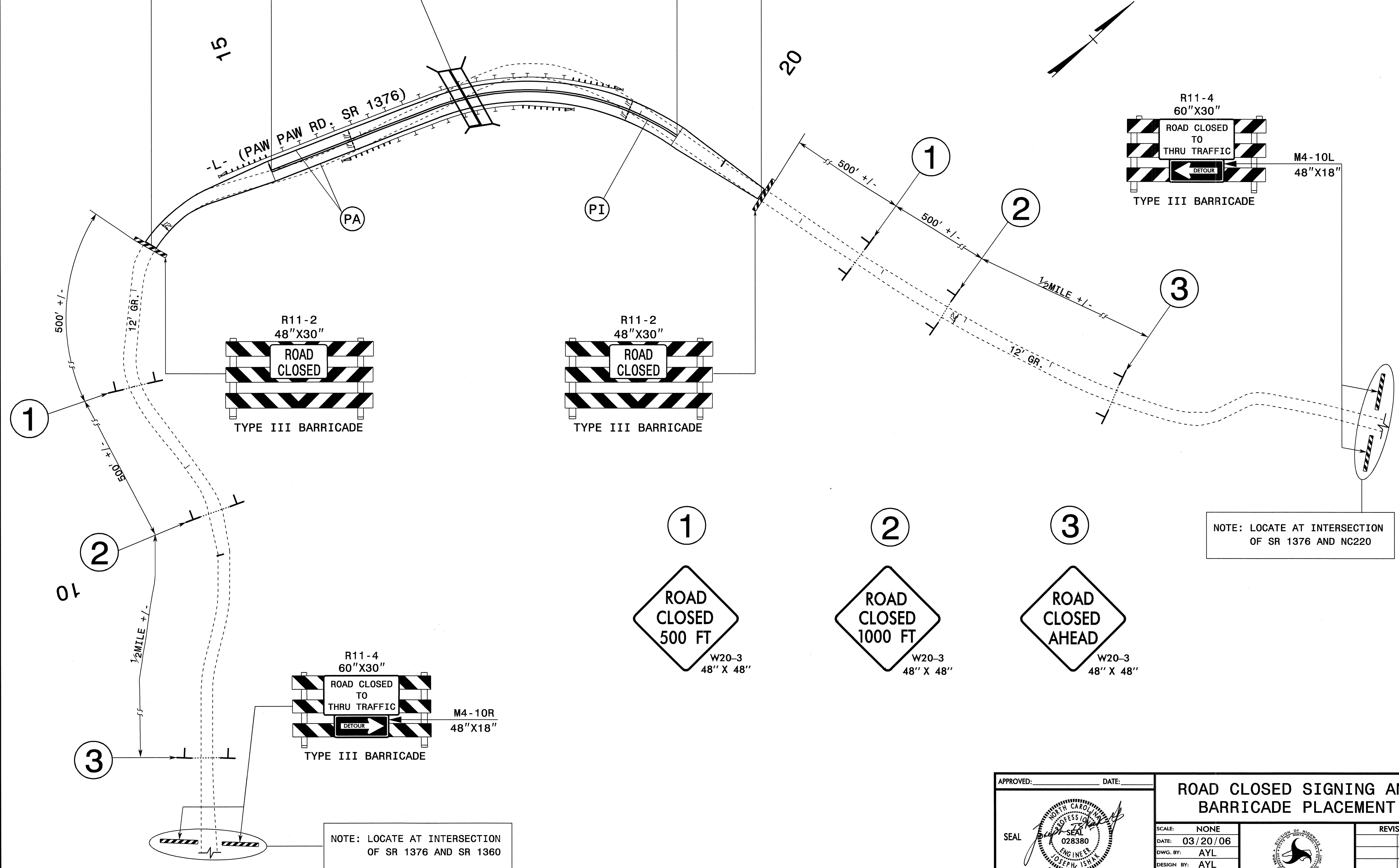
- REMOVE EXISTING STRUCTURE No.165 AND CONSTRUCT PROPOSED CULVERT AT -L- STA.17+15+/-.
- CONSTRUCT PROPOSED ROADWAY FROM -L- STA.13+50+/- TO -L- STA.20+50+/- UP TO AND INCLUDING THE FINAL LAYER OF SURFACE COURSE FROM -L- STA.15+00+/- TO STA.19+44+/-.

STEP 3: REMOVE ALL TRAFFIC CONTROL DEVICES AND DETOUR SIGNING. OPEN SR 1376 (PAW PAW RD.) TO THE FINAL TRAFFIC PATTERN

15-MAY-2007 13:37
 \\northcarol\proj\h\proj\traffic\trafficcontrol\top\revised_top_sheets\unpaved_b3900\unpaved_top-2.dgn
 by: jldm: AT WZ12224239

APPROVED:	DATE:	PROJECT NOTES AND PHASING	
		SCALE: NONE	REVISIONS
		DATE: 04/17/07	
		DWG. BY: AYL	
		DESIGN BY: AYL	
		REVIEWED BY: JLP	
			CADD FILE

BEGIN PROJECT -L- STA. 13+50.00
 BEGIN PAVEMENT -L- STA. 15+00.00
 -L- STA. 17+15+/- PROPOSED CULVERT
 END PAVEMENT -L- STA. 19+44.70
 END PROJECT -L- STA. 20+50.00



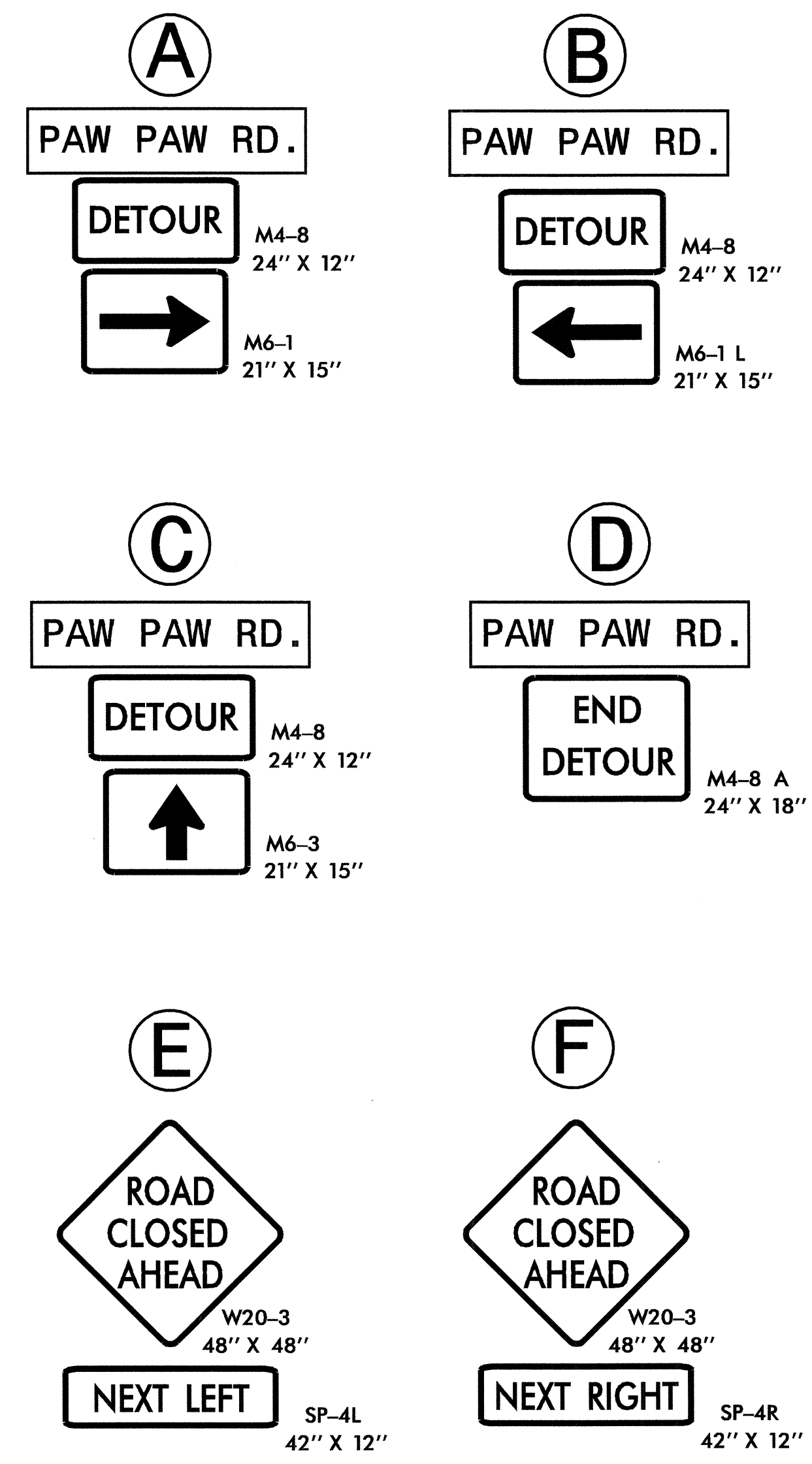
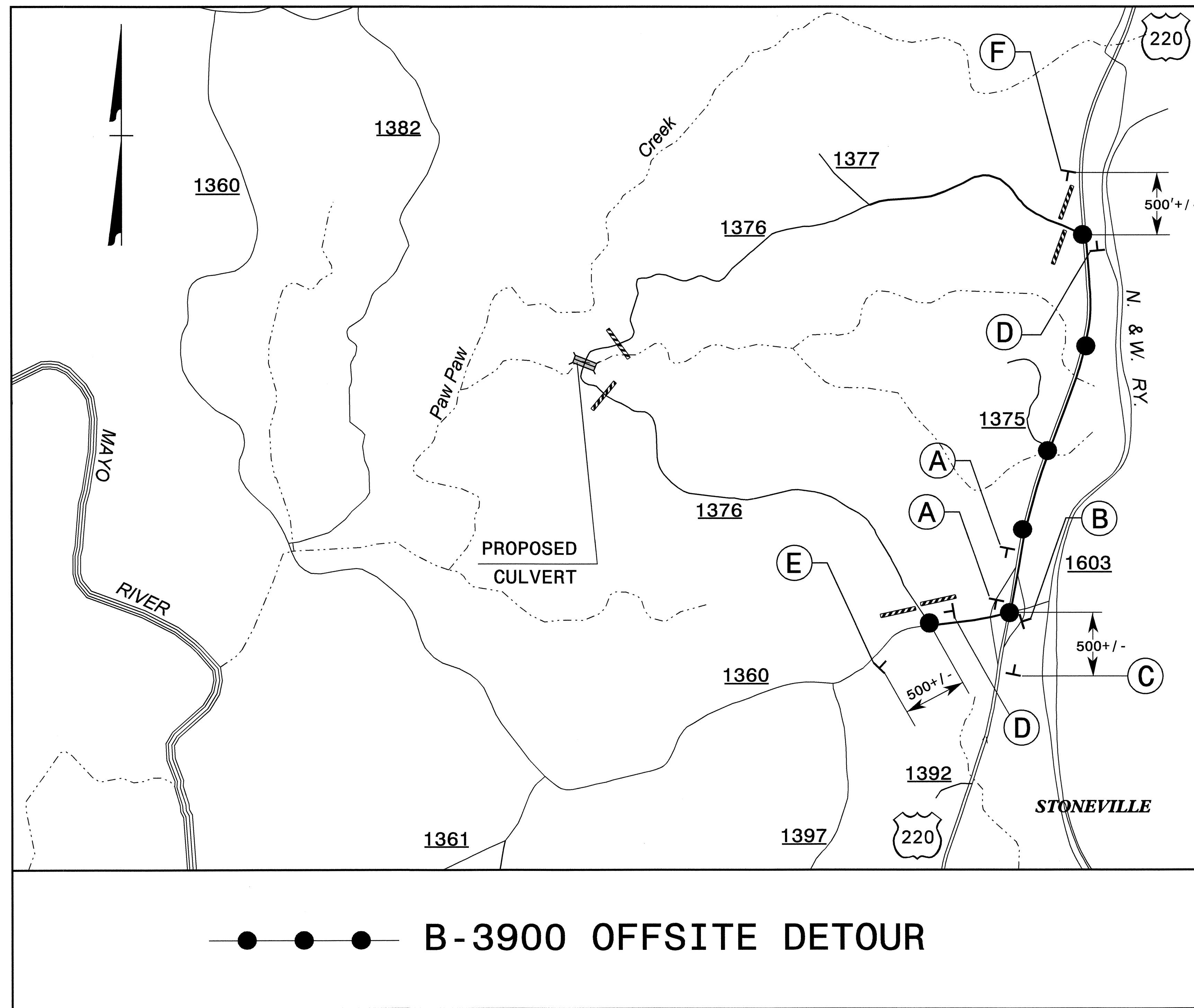
NOTE: LOCATE AT INTERSECTION OF SR 1376 AND NC220

NOTE: LOCATE AT INTERSECTION OF SR 1376 AND SR 1360

23-MAR-2006 14:00
 \\ets-cet503\p339008\trafficcontrol\B3900_Tcp-3.dgn
 gnyuomi AT WZTC224239

APPROVED: _____ DATE: _____	ROAD CLOSED SIGNING AND BARRICADE PLACEMENT	
SCALE: NONE		REVISIONS
DATE: 03/20/06		
DWG. BY: AYL		
DESIGN BY: AYL		
REVIEWED BY: JI		CADD FILE

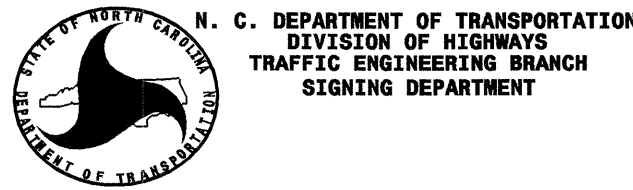
VICINITY MAP: ROCKINGHAM COUNTY



NOTE: SEE SHEET TCP-5 FOR DETOUR SIGN DESIGN.

23-MAR-2006 15:26
 \\lets-cc\fs03\3900\Traffic\Trafficcontrol\tcp\B3900_TCP-4.dgn
 alyudml AT WZTC224239

APPROVED: _____	DATE: _____	DETOUR ROUTE		
	SCALE: NONE			
	DATE: 03/21/06			REVISIONS
	DWG. BY: AYL			
	DESIGN BY: AYL			
REVIEWED BY: JI				



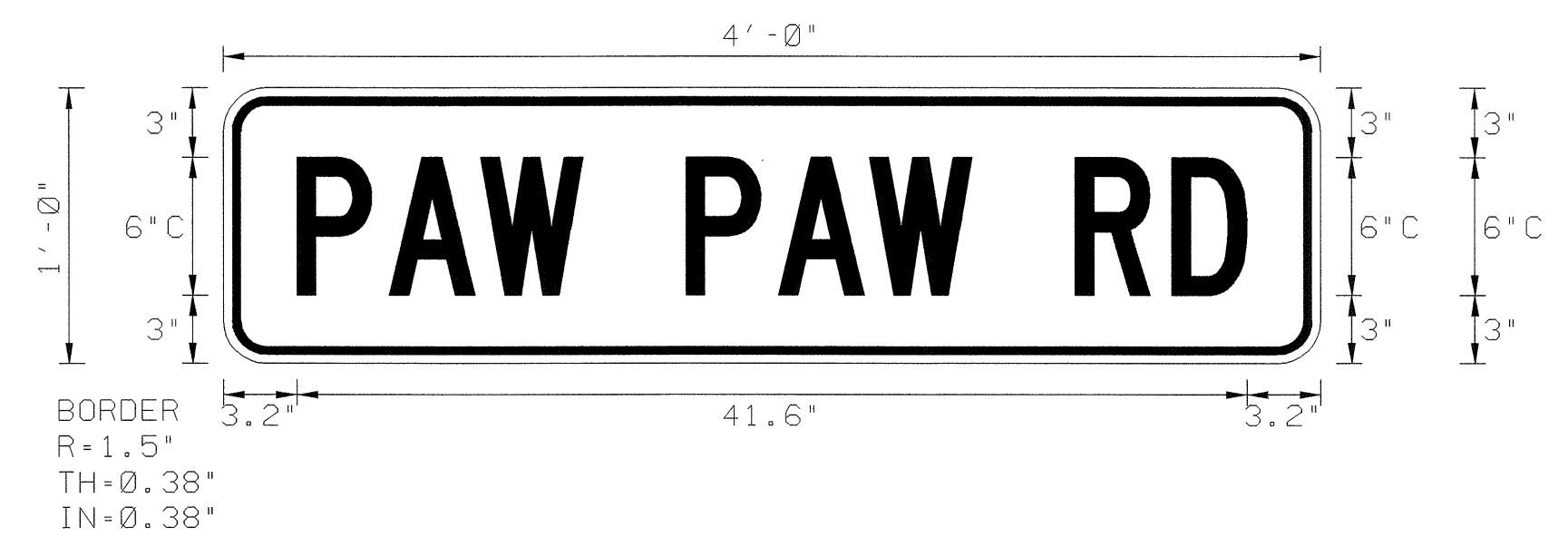
SIGN NUMBER: SP06047
TYPE: D
QUANTITY: 1
SIGN WIDTH: 48"
HEIGHT: 12"
TOTAL AREA: 4.0 Sq.Ft.
BORDER TYPE: FLUSH
RECESS: 0.38"
WIDTH: 0.38"
RADII: 1.5"
NO. Z BARS:
LENGTH:

BACKG COLOR: Fluorescent Orange
COPY COLOR: Black

SYMBOL	X	Y	WID	HT

MAT'L: 0.125" (3.2 mm) ALUMINUM
0.079" COMPOSITE

DESIGN BY: R. HENNEIN
PROJECT ID: B-3900
CHECKED BY:
DIV: 7
STD #: N/A
DATE: Mar 14, 2006



MOUNTED ON TWO U-POSTS

LETTER POSITIONS

Letter spacings are to start of next letter												Series/Size	
	P	A	W		P	A	W		R	D		Text Length	
	3.2	4	4	4.5	4.5	4	4	4.5	4.5	4.2	3.3	3.2	C6
													41.6

Spacing Factor is 1 unless specified otherwise
FILENAME: SP06036_moriahrdr

NORTH CAROLINA D.O.T. SIGN DETAIL

23-MAR-2006 13:57
\\GIS-CCT1\GIS\3390004\Traffic\trafficontrol\tcp\B3900_TCP-5.dgn
0140001 AT WZ 12224239

APPROVED:	DATE:	DETOUR SIGN DESIGN	
	SCALE: NONE		
	DATE: 03/14/06		
	DWG. BY: AYL		
	DESIGN BY: AYL		
REVIEWED BY: JI			