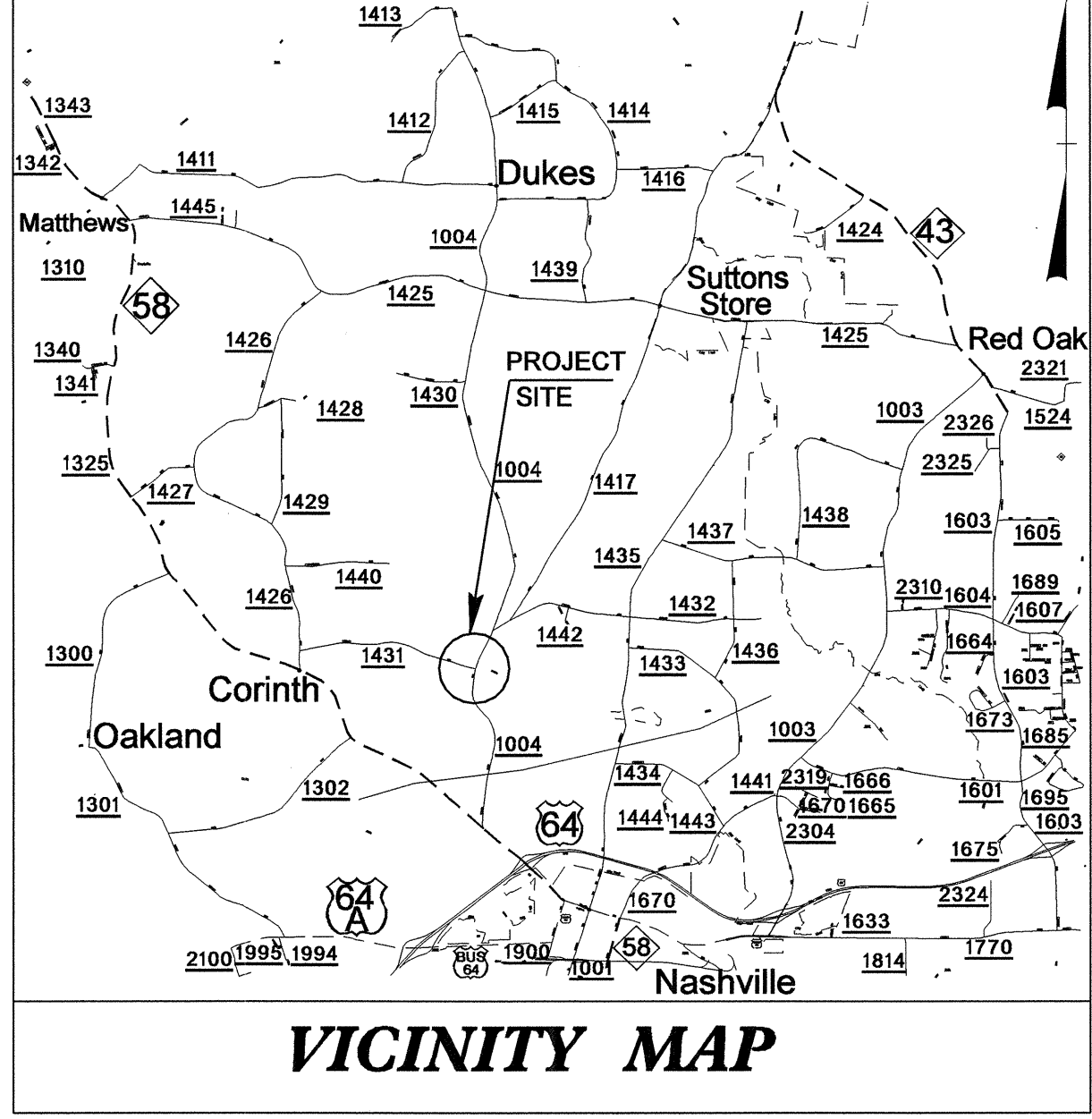


09/06/99

See Sheet 1-A For Street Index of Sheets



VICINITY MAP

STATE OF NORTH CAROLINA  
DIVISION OF HIGHWAYS

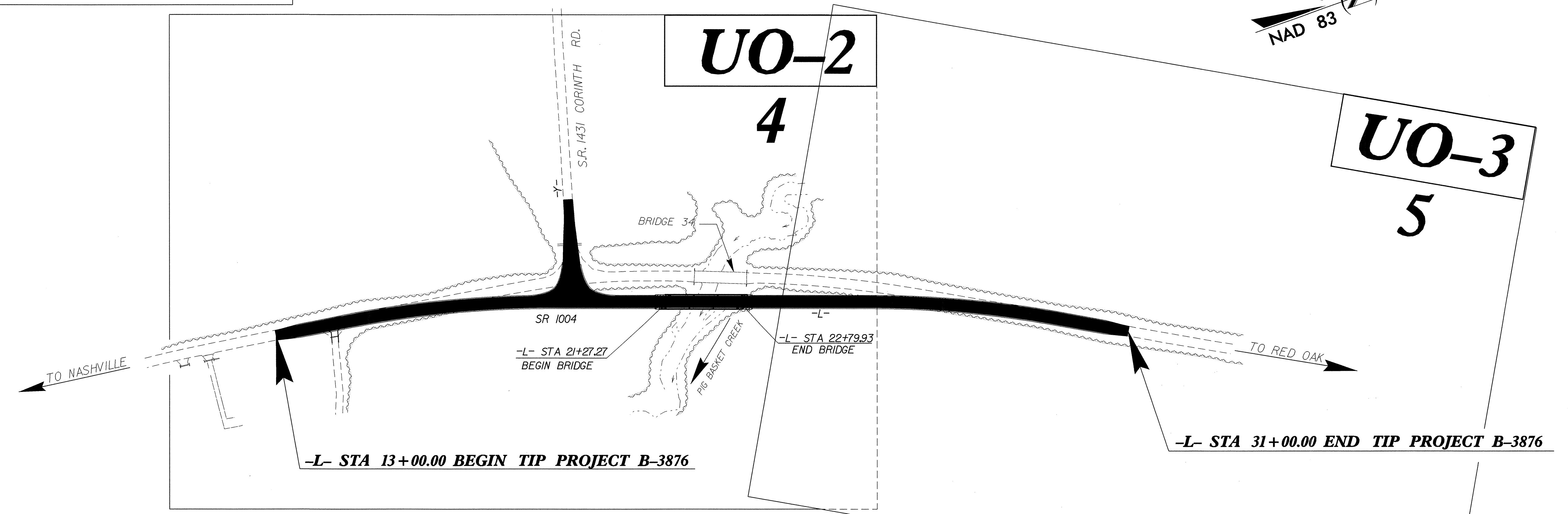
**UTILITIES BY OTHERS PLANS  
NASH COUNTY**

**LOCATION: BRIDGE 34 ON SR 1004 OVER PIG  
BASKET CREEK**

**TYPE OF WORK: UTILITIES**

T.I.P. NO.	SHEET NO.
B-3876	UO-1

**TIP B-3876**



INDEX OF SHEETS	
SHEET NO.	DESCRIPTION
UO-1	TITLE SHEET
UO-2 THRU UO-3	UTILITIES BY OTHERS PLAN SHEETS

UTILITY OWNERS ON PROJECT
(1) PROGRESS ENERGY
(2) EMBARQ
(3) TIME WARNER

PREPARED IN THE OFFICE OF:  
**DIVISION OF HIGHWAYS  
DESIGN SERVICES  
UTILITY SECTION**

1591 MAIL SERVICES CENTER  
RALEIGH NC 27699-1591  
PHONE (919) 250-4128  
FAX (919) 250-4119

<u>Roger Worthington, P.E.</u>	UTILITIES SECTION ENGINEER
<u>Steve Mckee, P.E.</u>	UTILITIES SQUAD LEADER PROJECT ENGINEER
<u>Alonza Yancey</u>	UTILITIES PROJECT DESIGNER

29-JAN-2007 15:25  
r:\utilities\ydy\ut\proj\b3876\_ut\_tsh\_uo1.dgn  
\$\$\$\$\$USERNAME\$\$\$\$\$

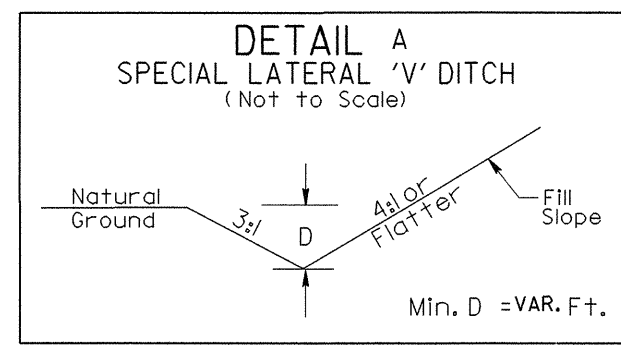
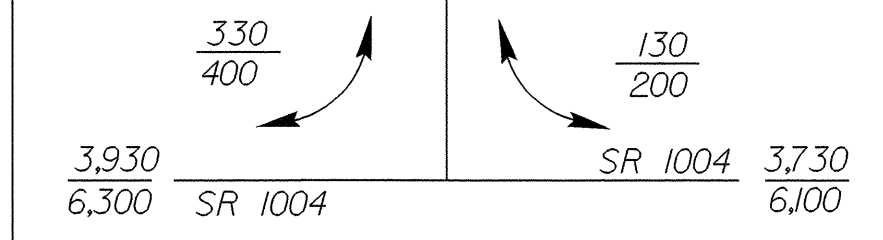
UTILITIES BY OTHERS

NOTE:  
ALL PROPOSED UTILITY WORK SHOWN ON THIS SHEET WILL BE DONE BY OTHERS

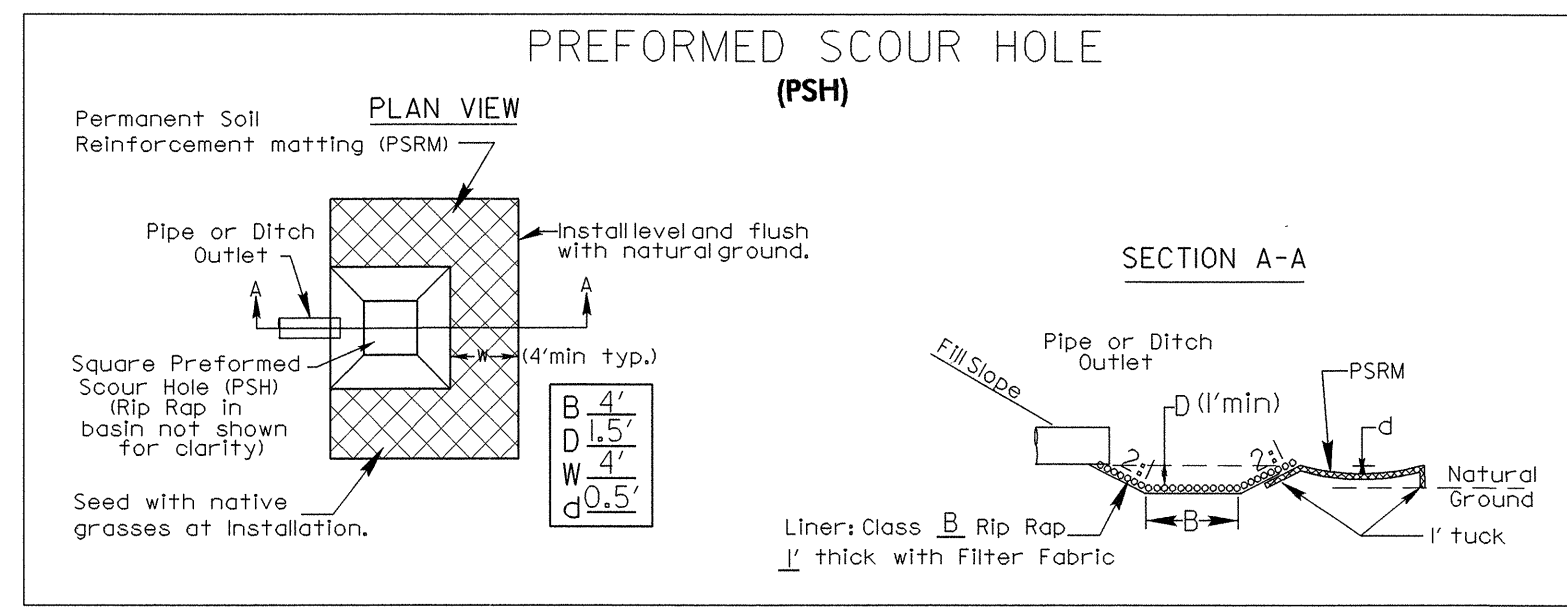
SEE SHEET 6 FOR -L- PROFILE  
SEE SHEET 7 FOR -Y- PROFILE

**DATUM DESCRIPTION**  
THE LOCALIZED COORDINATE SYSTEM DEVELOPED FOR THIS PROJECT IS BASED ON THE STATE PLANE COORDINATES ESTABLISHED BY NCDOT FOR MONUMENT "B3876-1" WITH NAD 1983/95 STATE PLANE GRID COORDINATES OF NORTHING: 8219979889 (ft) -EASTING: 23010160738 (ft) THE AVERAGE COMBINED GRID FACTOR USED ON THIS PROJECT IS: 0.99982989 THE N.C. LAMBERT GRID BEARING AND LOCALIZED HORIZONTAL GROUND DISTANCE FROM "B3876-1" TO -L- STA 13+00 IS S 5° 26' 04.74" W 601.795' ALL LINEAR DIMENSIONS ARE LOCALIZED HORIZONTAL DISTANCES VERTICAL DATUM USED IS NAVD 88

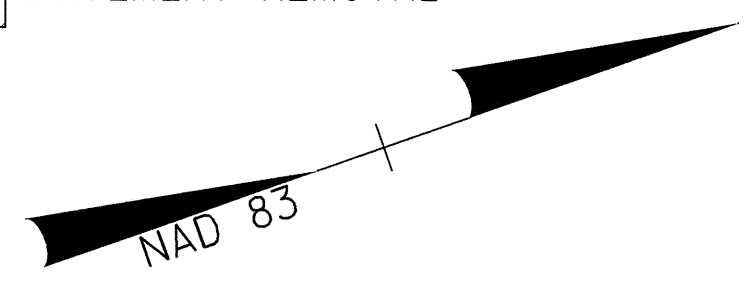
ADT 2007  
ADT 2025



STA 14+00-L- TO STA 17+50-L- (RIGHT)



STA 20+71-L- (RIGHT)  
STA 20+92 -L- (LEFT)  
STA 23+04 -L- (LEFT)



**-L-**  
PI Sta 11+08.97  
 $\Delta = 3^\circ 17' 31.1''$  (RT)  
D = 2' 08" 48.6"  
L = 153.34'  
T = 76.69'  
R = 2,668.83'  
e = EXISTING

BL-101 POT 5+00.00  
-L- POT 13+9.62 (25.37' LT.)

NOTE: USE 5.0' O/S FOR 3-CENTERED CURVE (120'-40'-120')

GUY W. & BEVERLY VICK  
D.B. 877 PG. 305  
P.B. 9 PG. 57

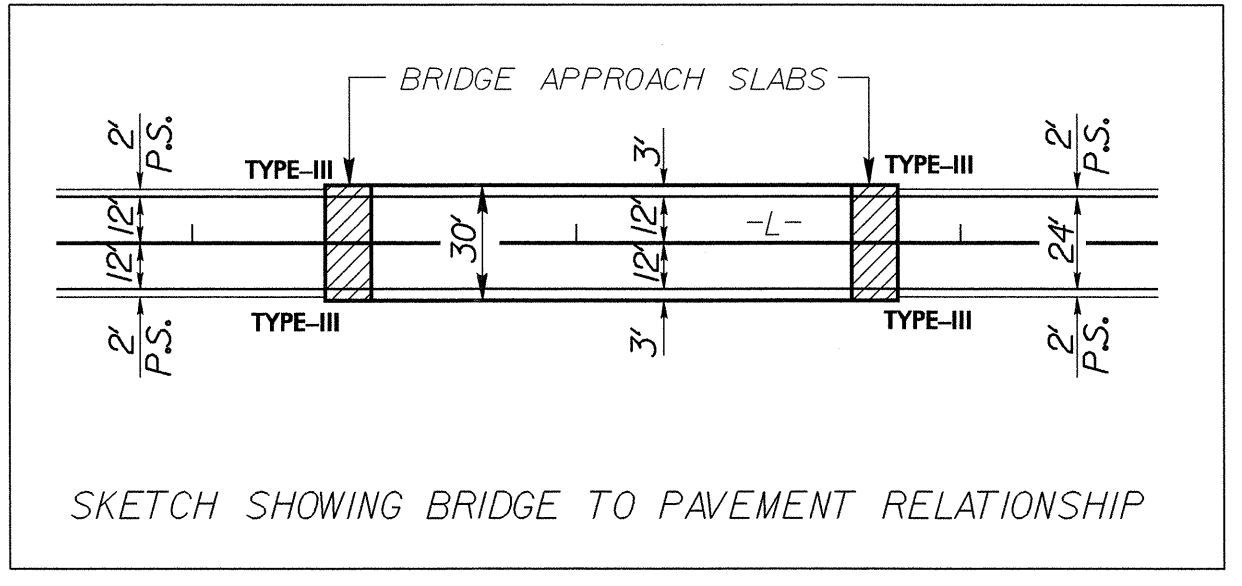
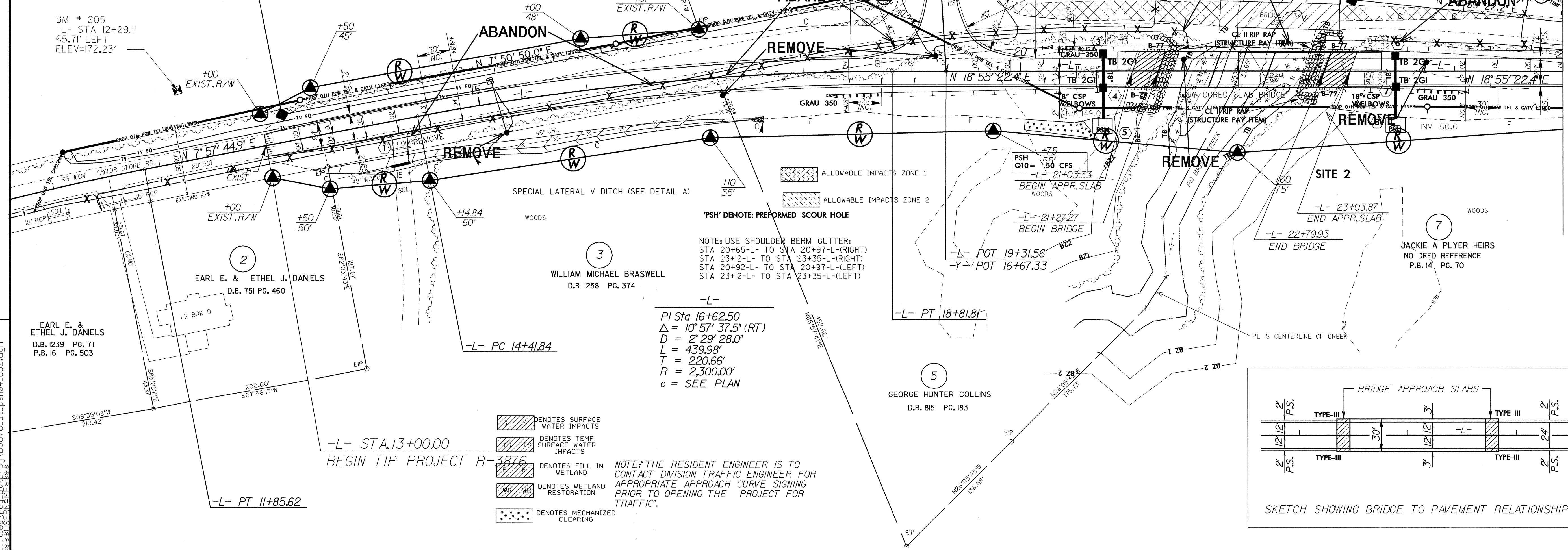
B3876-1-BL- PINC 10+81.59=  
-BY- POT 9+99.43  
-L- POC 18+90.46 (71.44' LT)

**SITE 1**  
NOTE: REMOVE EXISTING 42" CMP AND REPLACE WITH A 60" INCH RCP. BURY THE 60" INCH RCP A FOOT.  
+50 -Y- EXIST. R/W

AVR LIMITED PARTNERSHIP  
D.B. 1834 PG. 825  
P.B. 18 PG. 298

BL- 103 PINC 14+97.15  
-L- POT 23+05.99 (65.95' LT.)

MORRIS BATTLE  
NO DEED REFERENCE



MATCH LINE \*\* SEE SHEET UO-3 \*\* -L- STA 25+00

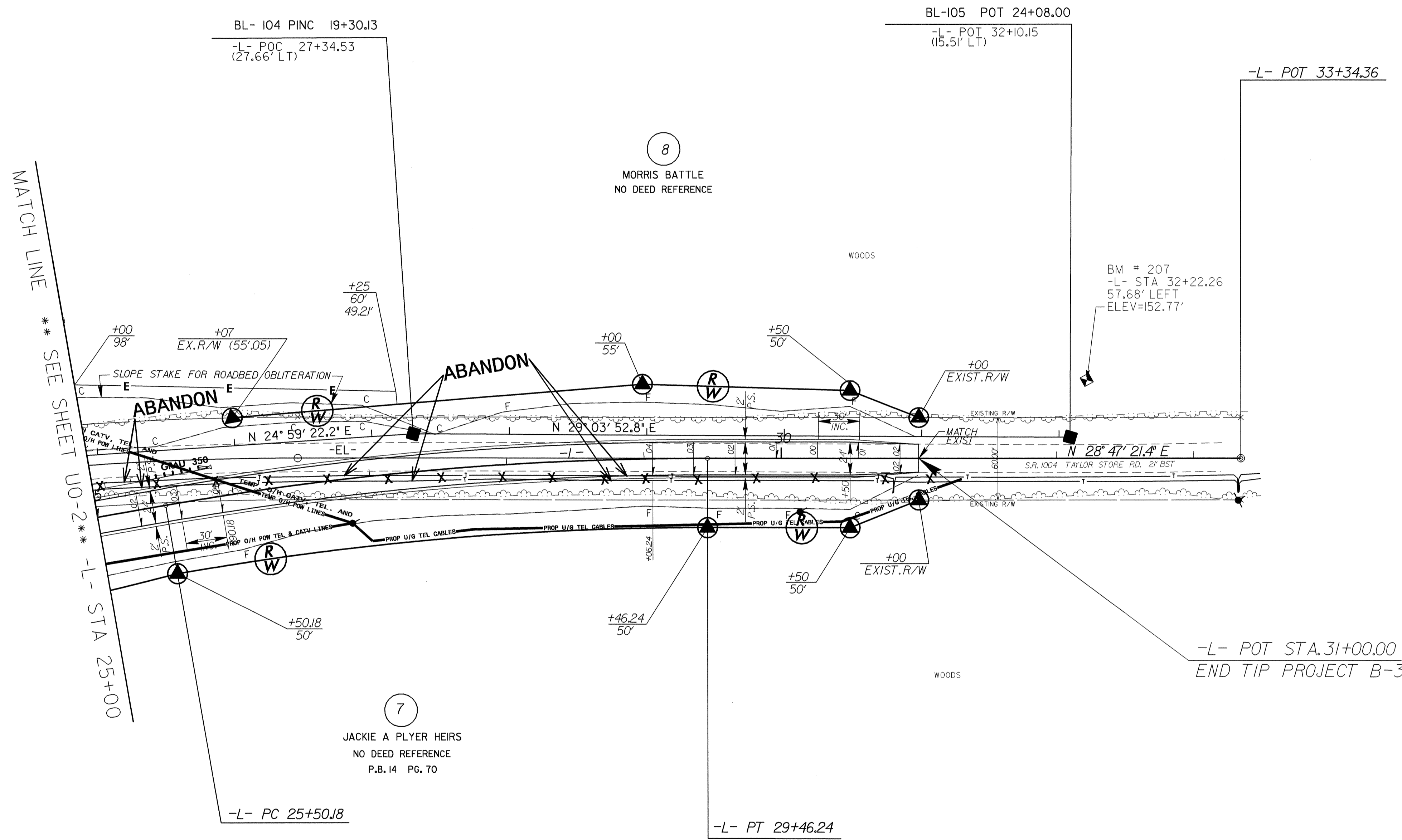
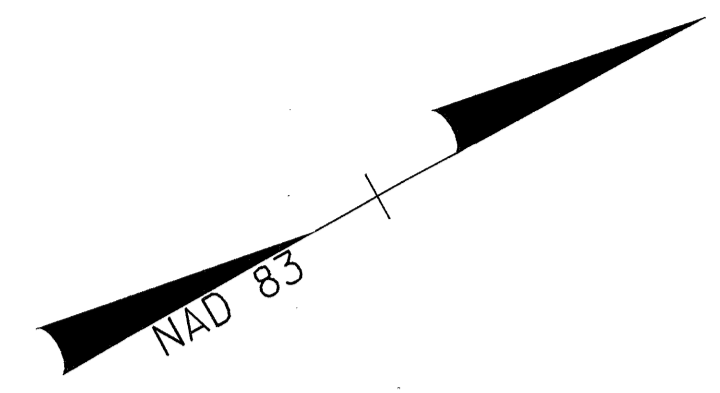
28-MAR-2007 10:21 A:\b3876\_uo2\_psh04\_uo2.dgn



### UTILITIES BY OTHERS

**NOTE:**  
ALL PROPOSED UTILITY WORK  
SHOWN ON THIS SHEET WILL  
BE DONE BY OTHERS

SEE SHEET 6 FOR -L- PROFILE



-L-  
PI Sta 27+48.70  
 $\Delta = 9^\circ 51' 59.0''$  (RT)  
 $D = 2^\circ 29' 28.0''$   
 $L = 396.06'$   
 $T = 198.52'$   
 $R = 2,300.00'$   
 $e = \text{SEE PLAN}$

MATCH LINE \*\* SEE SHEET U0-2 \*\* -L- STA 25+00

-L- POT STA. 31+00.00  
END TIP PROJECT B-3

REVISIONS

5/14/99  
r:\h1\28-MAR-2007 10:21 1\psh05\_uo3.dgn