

**TIP PROJECT: B-3863**

STATE OF NORTH CAROLINA  
DIVISION OF HIGHWAYS

---

PLAN FOR PROPOSED  
HIGHWAY EROSION CONTROL

**JOHNSTON COUNTY**

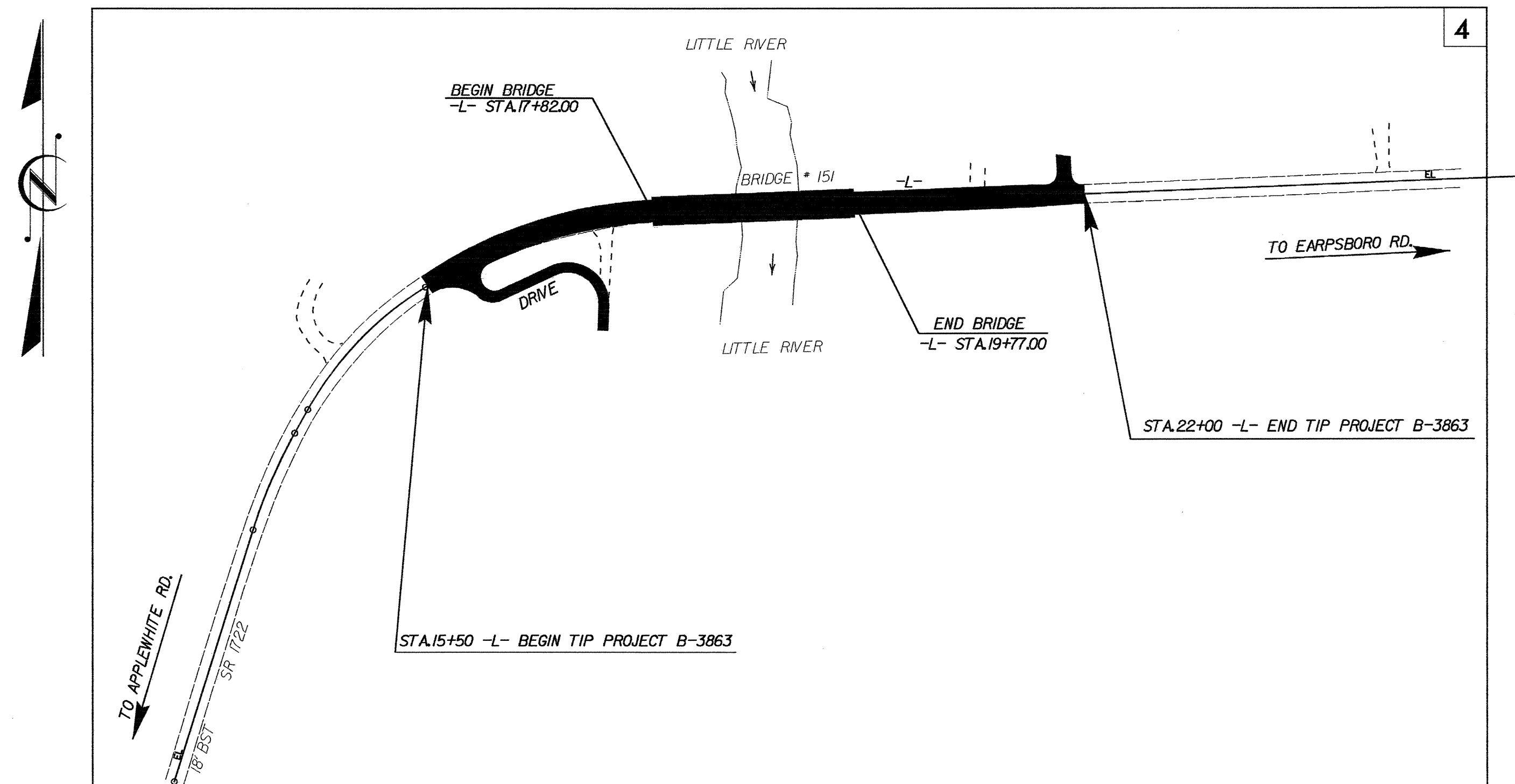
**LOCATION: REPLACEMENT OF BRIDGE NO. 151 ON SR 1722  
OVER LITTLE RIVER**

**TYPE OF WORK: RESURFACING, PAVING, GRADING, DRAINAGE,  
STRUCTURE, AND STRUCTURE REMOVAL**

STATE	STATE PROJECT REFERENCE NO.	SHEET NO.	TOTAL SHEETS
N.C.	B-3863	EC-1	
STATE PROJ. NO.	F.A. PROJ. NO.	DESCRIPTION	

**EROSION AND SEDIMENT CONTROL MEASURES**

Sta. #	Description	Symbol
	Streambank Reforestation	
1630.03	Temporary Silt Ditch	
1630.05	Temporary Diversion	
1605.01	Temporary Silt Fence	
1606.01	Special Sediment Control Fence	
1622.01	Temporary Berms and Slope Drains	
1630.01	Riser Basin	
1630.02	Silt Basin Type B	
1633.01	Temporary Rock Silt Check Type-A	
	Temporary Rock Silt Check Type-B	
1634.01	Temporary Rock Sediment Dam Type-A	
1634.02	Temporary Rock Sediment Dam Type-B	
1635.01	Rock Pipe Inlet Sediment Trap Type-A	
1635.02	Rock Pipe Inlet Sediment Trap Type-B	
1650.01	Stilling Basin	
1630.04	Rock Inlet Sediment Trap:	
1632.01	Type A	
1632.02	Type B	
1632.03	Type C	
	Skimmer Basin	
	Tiered Skimmer Basin	



**THIS PROJECT CONTAINS  
EROSION CONTROL PLANS  
FOR CLEARING AND  
GRUBBING PHASE OF  
CONSTRUCTION.**

**THIS PROJECT HAS  
BEEN DESIGNED TO  
SENSITIVE WATERSHED  
STANDARDS.**

**ENVIRONMENTALLY  
SENSITIVE AREA(S) EXIST  
ON THIS PROJECT**  
*Refer To E. C. Special Provisions  
for Special Considerations.*

**GRAPHIC SCALE**

0

PLANS

0

PROFILE (HORIZONTAL)

0

PROFILE (VERTICAL)

ROADSIDE ENVIRONMENTAL UNIT  
DIVISION OF HIGHWAYS  
STATE OF NORTH CAROLINA

Prepared In the Office of:  
**ROADSIDE ENVIRONMENTAL UNIT**  
1 South Wilmington St.  
Raleigh, NC 27611  
**2006 STANDARD SPECIFICATIONS**

Roadway Standard Drawings

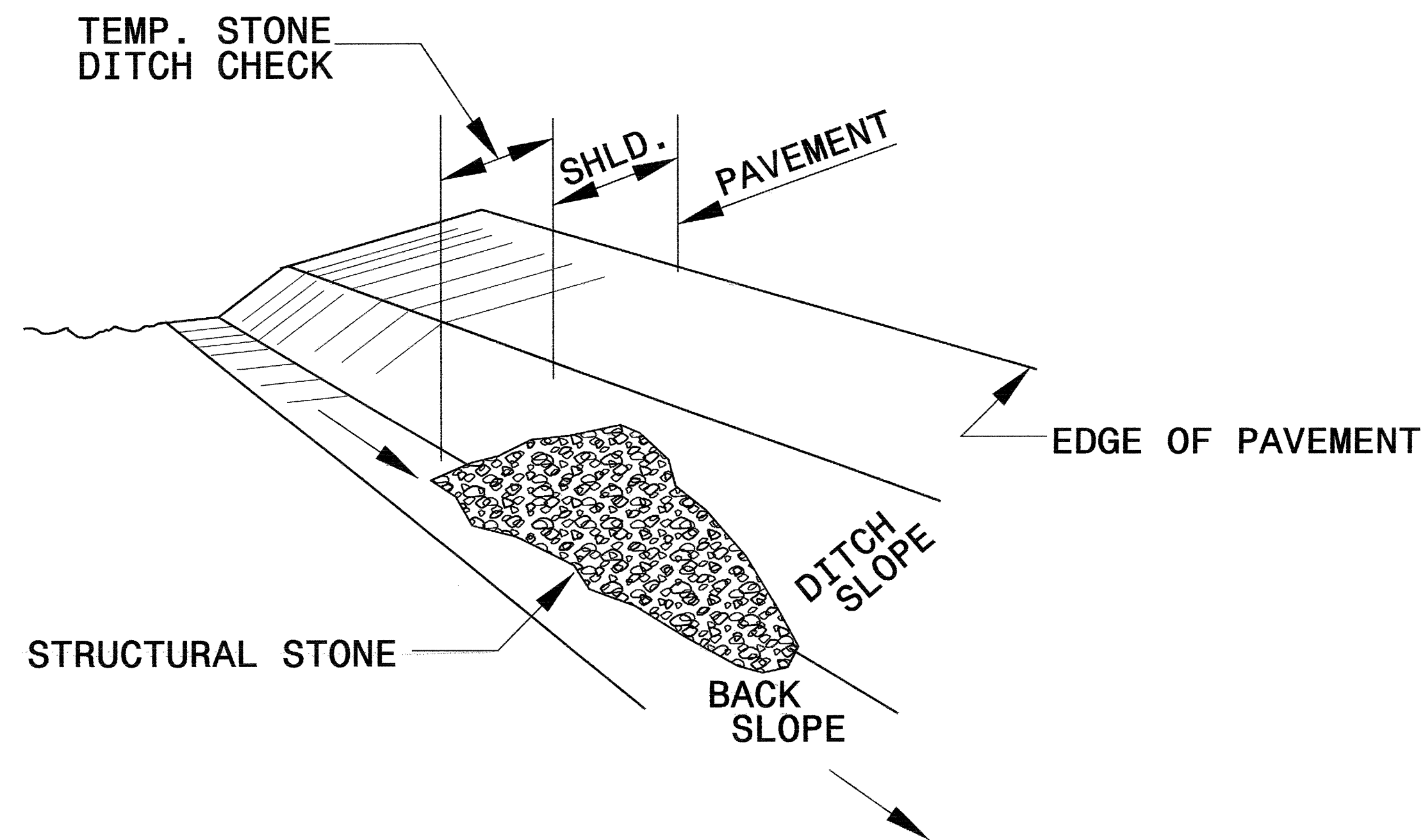
The following roadway english standards as appear in "Roadway Standard Drawings"- Roadway Design Unit - N. C. Department of Transportation - Raleigh, N. C., dated July 18, 2006 and the latest revision thereto are applicable to this project and by reference hereby are considered a part of these plans.

1605.01 Temporary Silt Fence	1630.06 Special Stilling Basin
1606.01 Special Sediment Control Fence	1632.03 Rock Inlet Sediment Trap Type C
1607.01 Gravel Construction Entrance	1633.01 Temporary Rock Silt Check Type A
1622.01 Temporary Berms and Slope Drains	1634.02 Temporary Rock Sediment Dam Type B
1630.02 Silt Basin Type B	
1630.03 Temporary Silt Ditch	

I:\Projects\25-1538\Roadside Environmental\design\B3863\_rdy\_tsh.dgn  
 11/18/06 10:20:07 AM  
 Project: 25-1538 AT: REN\251445

PROJECT REFERENCE NO. <i>B-3863</i>	SHEET NO. <i>EC-2</i>
RW SHEET NO.	
ROADWAY DESIGN ENGINEER	HYDRAULICS ENGINEER

# TEMPORARY ROCK SILT CHECK TYPE 'B' DETAIL

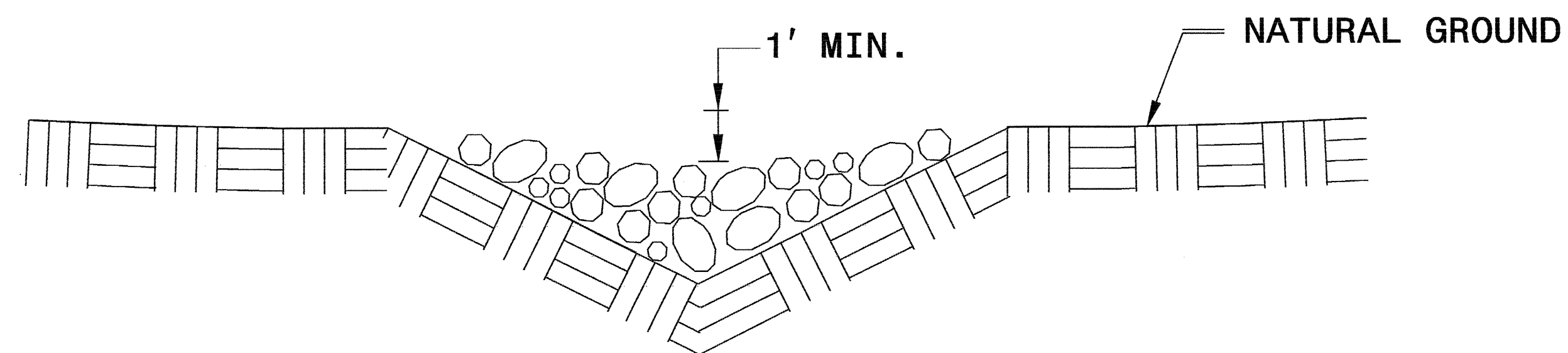


**ISOMETRIC VIEW**

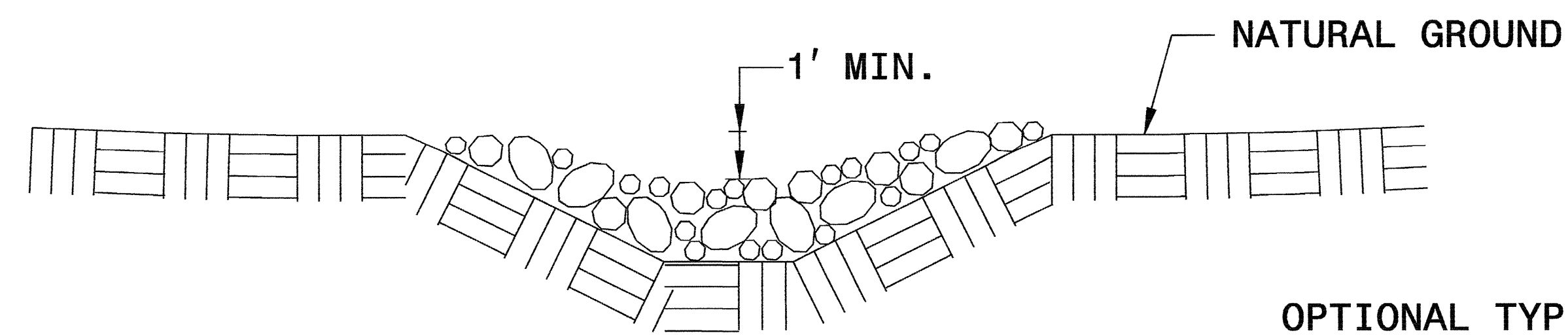
**NOTES:**

USE CLASS 'B' EROSION CONTROL STONE FOR STRUCTURAL STONE.

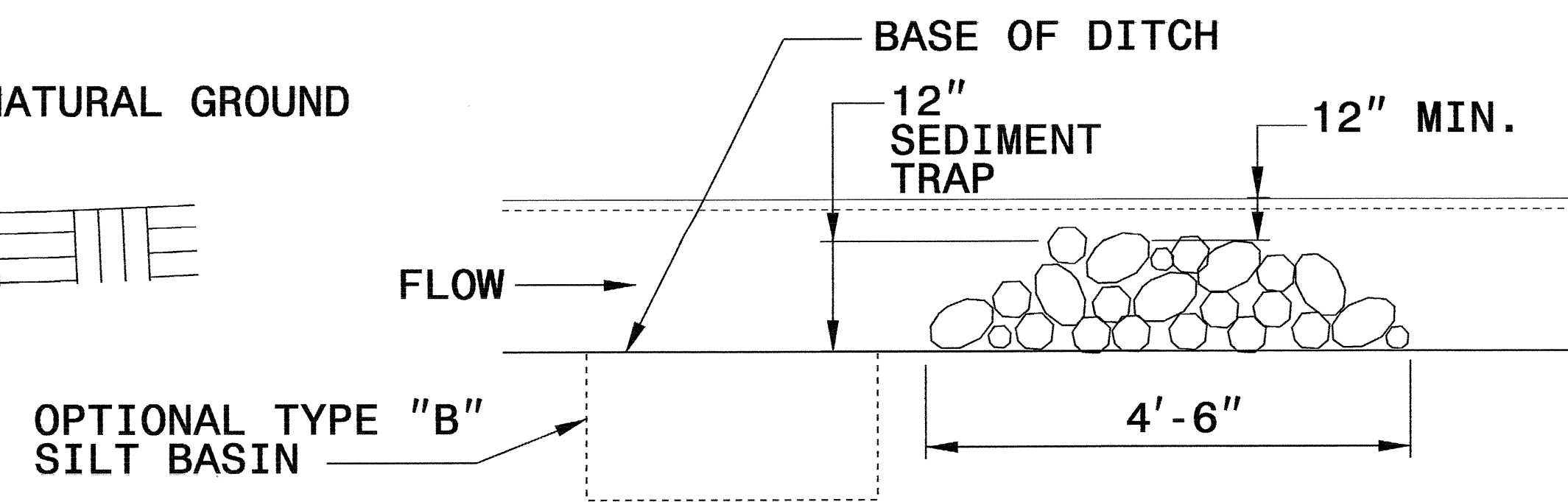
THE ENGINEER MAY DIRECT THE OPTION OF CLASS "A" STONE FOR SITES HAVING LESS THAN ONE (1) ACRE DRAINAGE AREA AND A DITCH GRADE LESS THAN 3%.



**CROSS SECTION VEE DITCH**



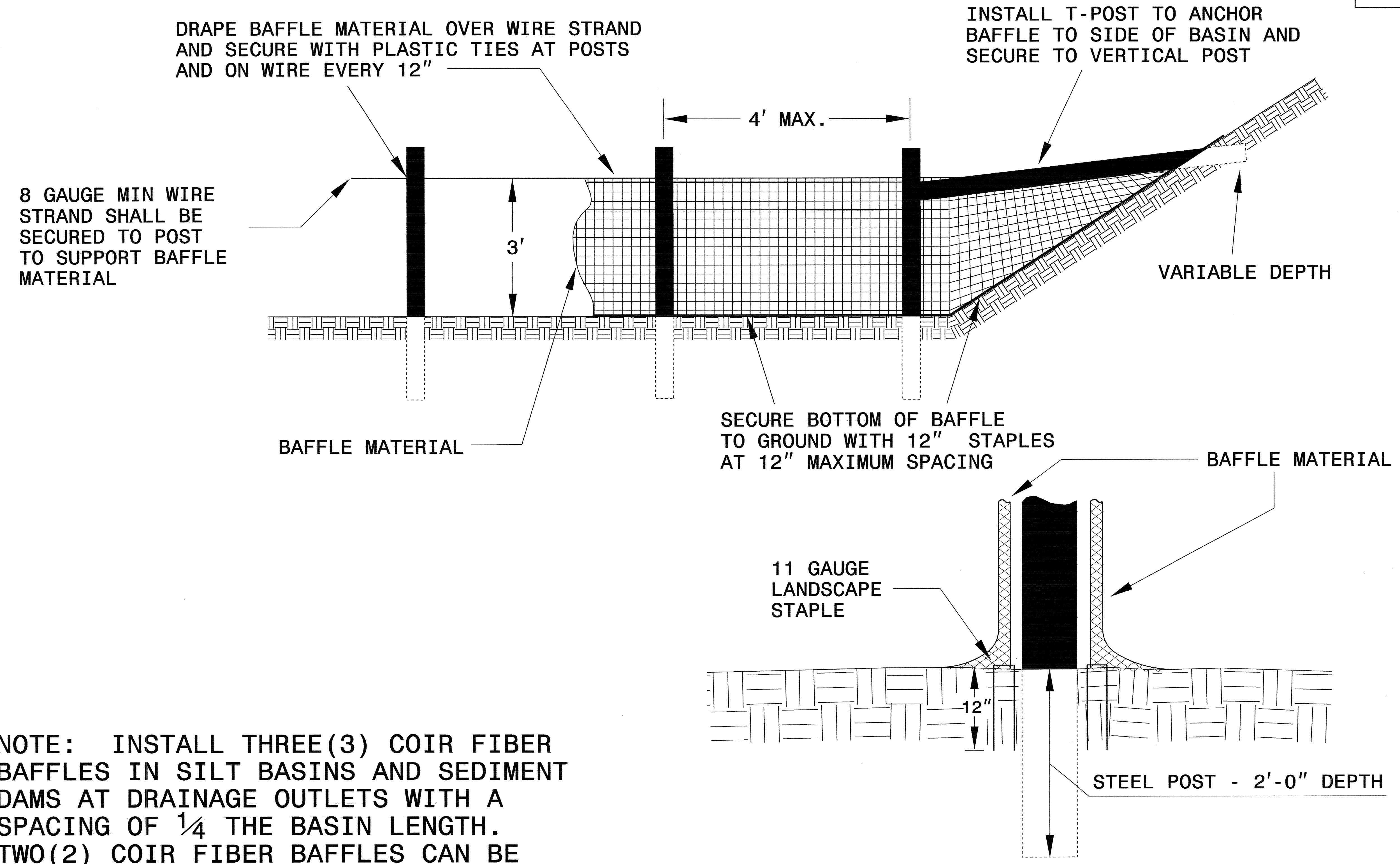
**CROSS SECTION TRAPEZOIDAL DITCH**



**ELEVATION VIEW**

PROJECT REFERENCE NO. B-3863	SHEET NO. EC-2A
RW SHEET NO.	
ROADWAY DESIGN ENGINEER	HYDRAULICS ENGINEER

# COIR FIBER BAFFLE DETAIL

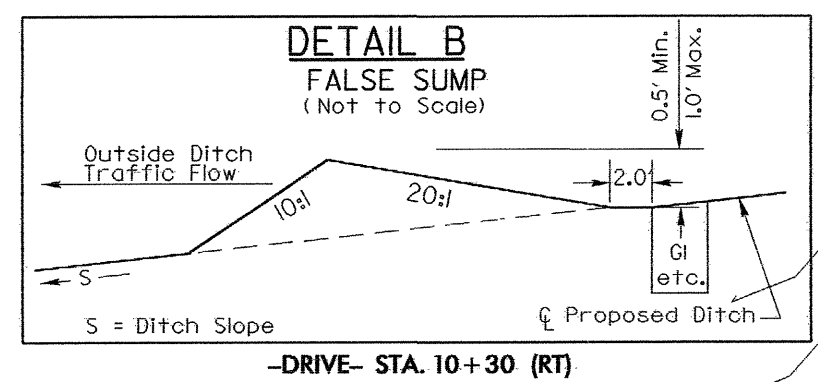
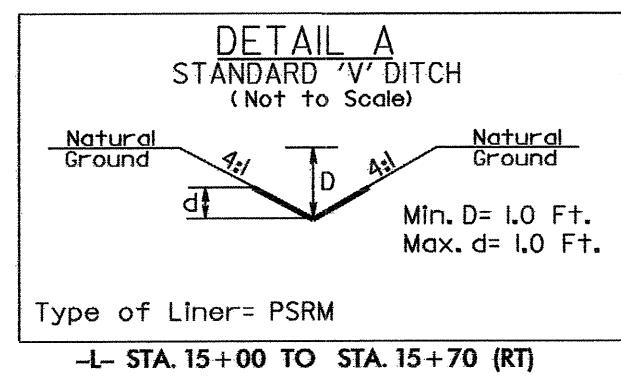
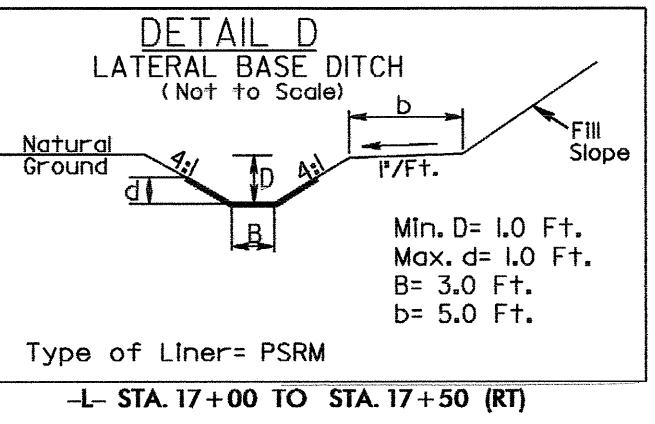
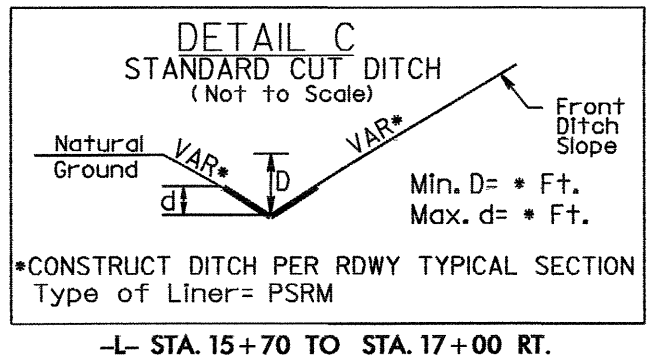
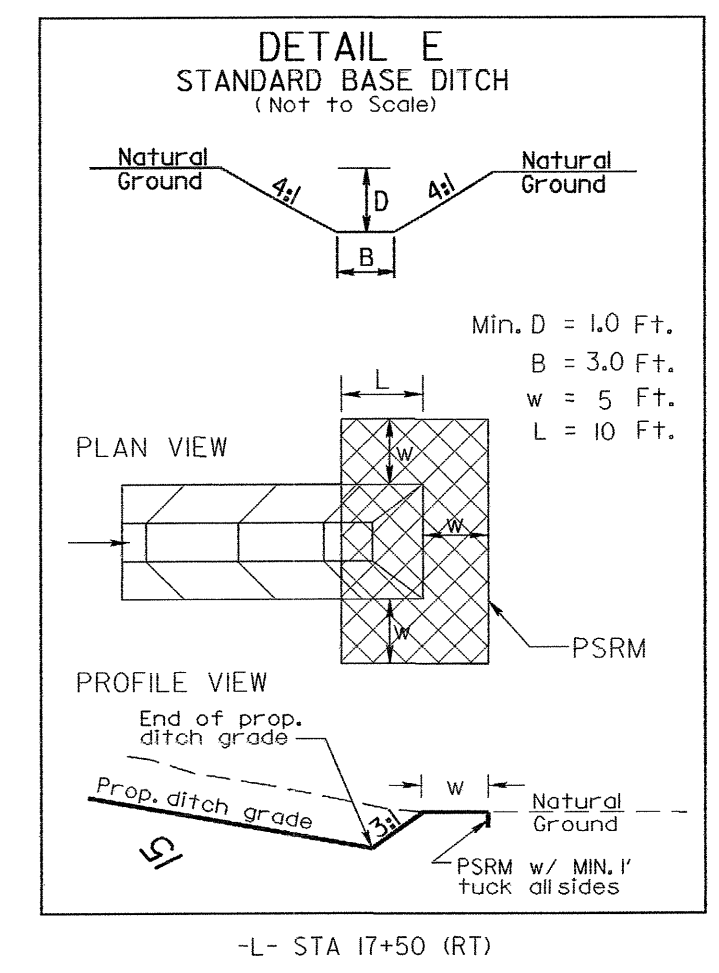


NOTE: INSTALL THREE(3) COIR FIBER BAFFLES IN SILT BASINS AND SEDIMENT DAMS AT DRAINAGE OUTLETS WITH A SPACING OF  $\frac{1}{4}$  THE BASIN LENGTH. TWO(2) COIR FIBER BAFFLES CAN BE INSTALLED IN SILT BASINS AND DAMS LESS THAN 20 FT. IN LENGTH WITH A SPACING OF  $\frac{1}{3}$  THE BASIN LENGTH.

BAFFLE MATERIAL SHALL BE SECURED TO THE BOTTOM AND SIDES OF BASIN USING 12" LANDSCAPE STAPLES



PROJECT REFERENCE NO. B-3863	SHEET NO. EC-4/CONST.4
RW SHEET NO.	
ROADWAY DESIGN ENGINEER	HYDRAULICS ENGINEER



END CONSTRUCTION  
-L- STA. 22+50.00

SPECIAL CUT DITCH  
SEE DETAIL I

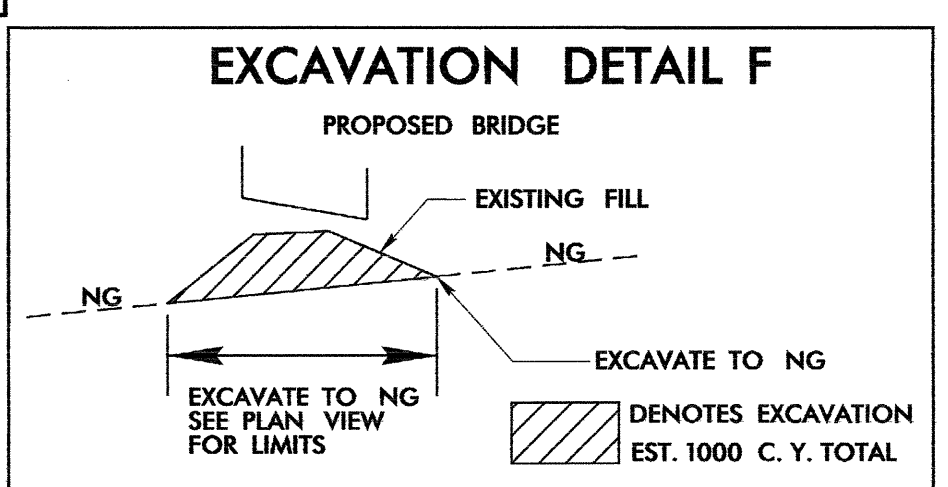
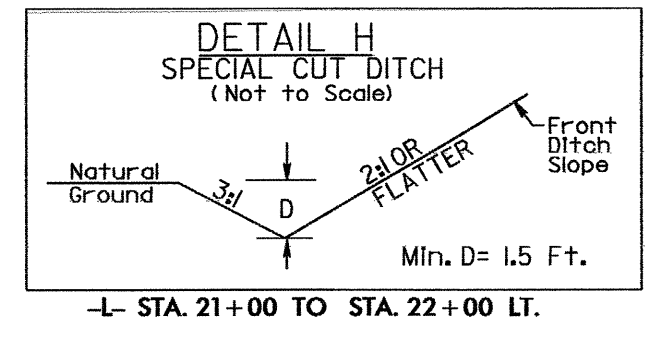
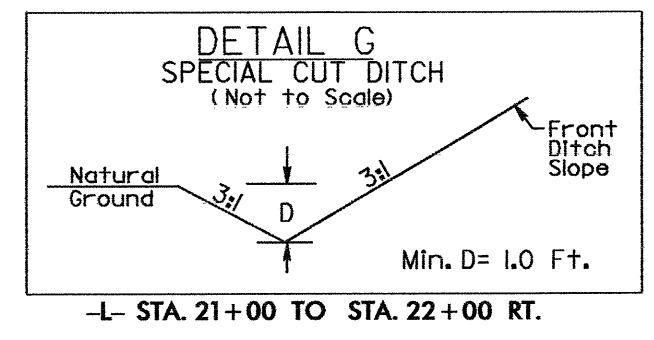
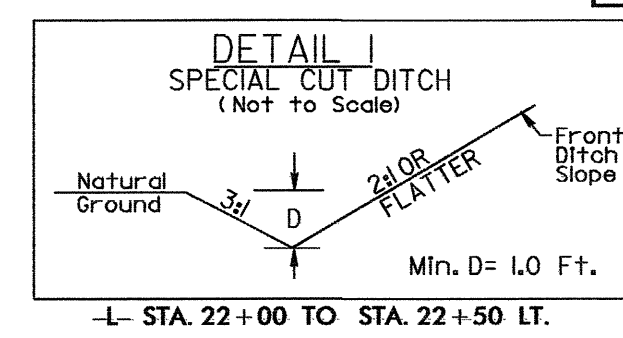
END STATE PROJECT B-3863  
-L- STA. 22+00.00

CLEARING AND GRUBBING  
EROSION CONTROL FOR  
CONSTRUCTION SHEET 4

NOTE:  
PLACE TEMPORARY ROCK SEDIMENT DAMS TYPE - B  
AND TEMPORARY ROCK SILT CHECKS TYPE - A AT  
DRAINAGE OUTLETS.

NOTE:  
UTILIZE TEMPORARY ROCK SILT CHECK TYPE - A  
AND SPECIAL STILLING BASIN  
AS STILLING BASIN WHERE APPLICABLE.

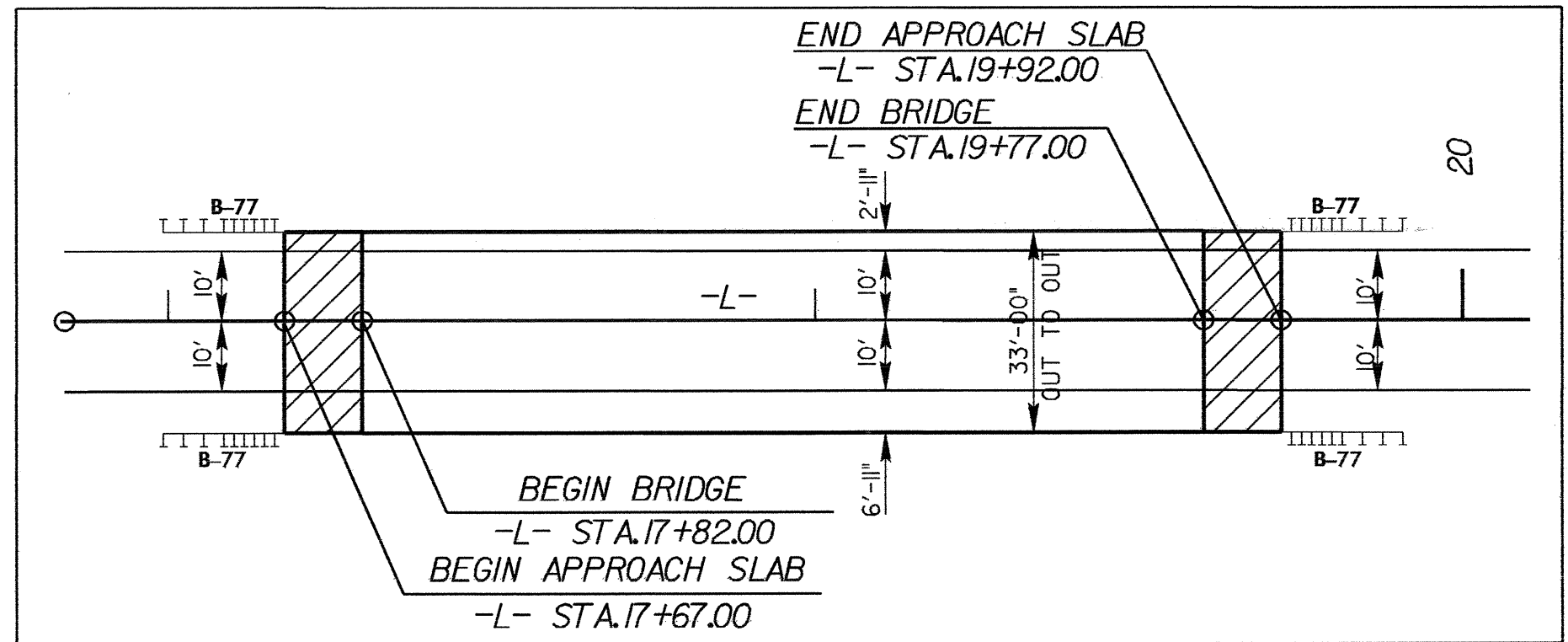
INSTALL FILTER FABRIC UNDER  
TEMPORARY ROCK SILT CHECK(S)  
TYPE A IN PERMITTED WETLANDS.



-DRIVE-  
PI Sta 10+42.35 Δ = 86° 30' 26.2" (LT)  
D = 38' 58' 18.7"  
L = 22.65'  
T = 14.1'  
R = 15.00'

PI Sta 11+65.70 Δ = 117° 32' 27.5" (RT)  
D = 163' 42' 08.0"  
L = 71.80'  
T = 57.72'  
R = 35.00'

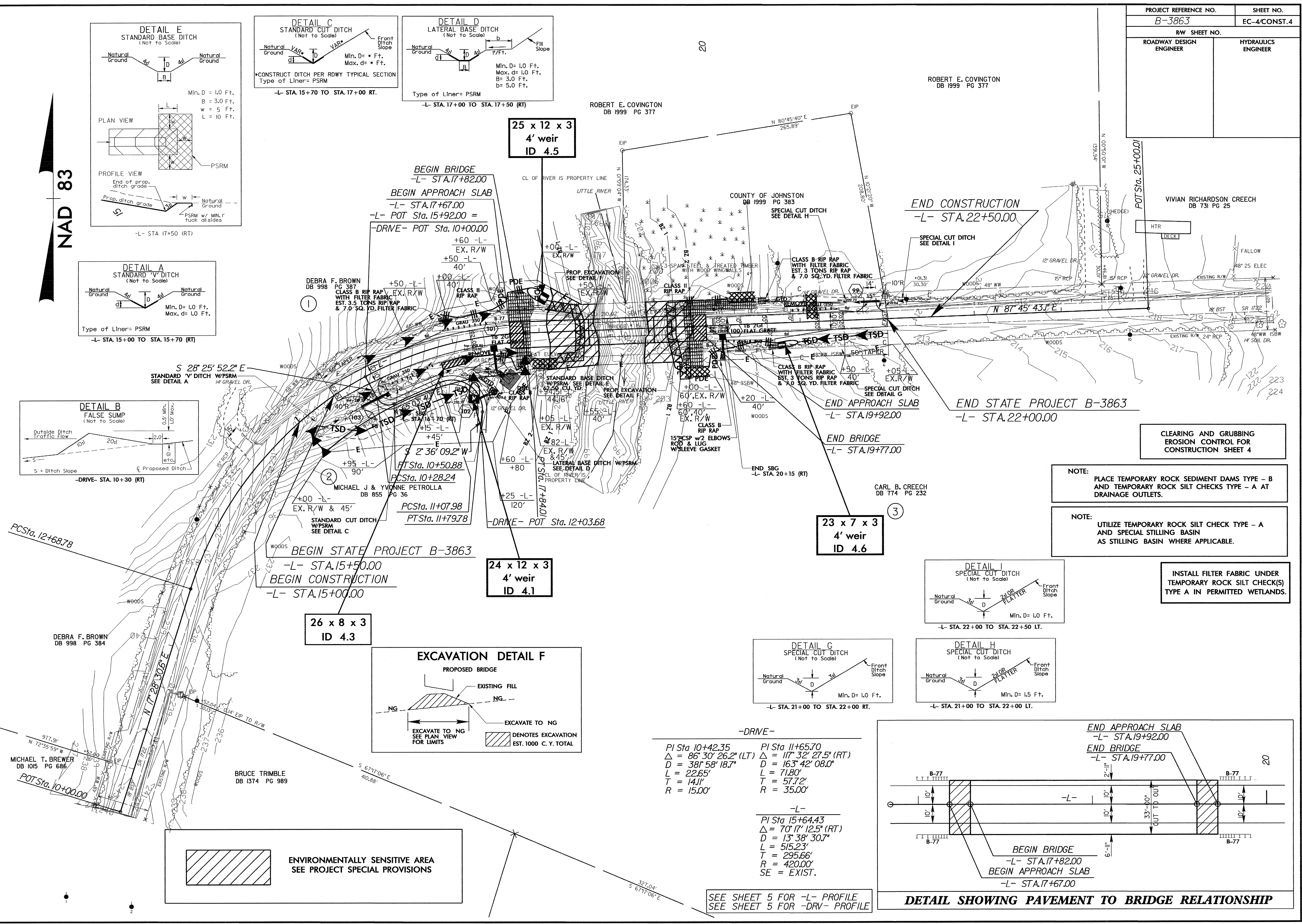
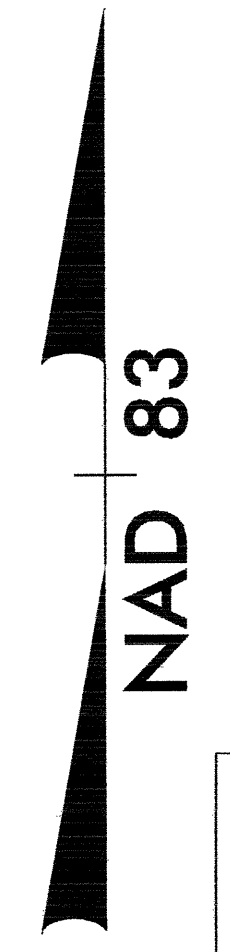
-L-  
PI Sta 15+64.43 Δ = 70° 17' 12.5" (RT)  
D = 13' 38' 30.7"  
L = 515.23'  
T = 295.66'  
R = 420.00'  
SE = EXIST.



SEE SHEET 5 FOR -L- PROFILE  
SEE SHEET 5 FOR -DRV- PROFILE

ENVIRONMENTALLY SENSITIVE AREA  
SEE PROJECT SPECIAL PROVISIONS

8/17/99



25 x 12 x 3  
4' weir  
ID 4.5

24 x 12 x 3  
4' weir  
ID 4.1

26 x 8 x 3  
ID 4.3

23 x 7 x 3  
4' weir  
ID 4.6

DEBRA F. BROWN  
DB 998 PG 384

MICHAEL T. BREWER  
DB 1015 PG 686

BRUCE TRIMBLE  
DB 1374 PG 989

ROBERT E. COVINGTON  
DB 1999 PG 377

CARL B. CREECH  
DB 774 PG 232

VIVIAN RICHARDSON CREECH  
DB 731 PG 25

COUNTY OF JOHNSTON  
DB 1999 PG 383

DEBRA F. BROWN  
DB 998 PG 387  
CLASS B RIP RAP  
WITH FILTER FABRIC  
EST. 3.5 TONS RIP RAP  
& 7.0 SQ. YD. FILTER FABRIC

MICHAEL J & YVONNE PETROLLA  
DB 855 PG 36

PCSta. 12+68.78

POT Sta. 10+00.00

NAD 83

-L- STA 17+50 (RT)

-L- STA. 15+00 TO STA. 15+70 (RT)

-DRIVE- STA. 10+30 (RT)

BEGIN STATE PROJECT B-3863  
-L- STA. 15+50.00  
BEGIN CONSTRUCTION  
-L- STA. 15+00.00

-DRIVE- POT Sta. 10+00.00

-L- POT Sta. 15+92.00 =

-L- STA. 17+82.00

-L- STA. 17+67.00

-L- STA. 19+92.00

-L- STA. 19+77.00

-L- STA. 22+00.00

-L- STA. 22+50.00

-L- STA. 20+15 (RT)

-L- STA. 12+03.68

-L- STA. 12+03.68

-L- STA. 12+03.68

-L- STA. 12+03.68

-L- STA. 12+03.68

-L- STA. 12+03.68

-L- STA. 12+03.68

-L- STA. 12+03.68

-L- STA. 12+03.68

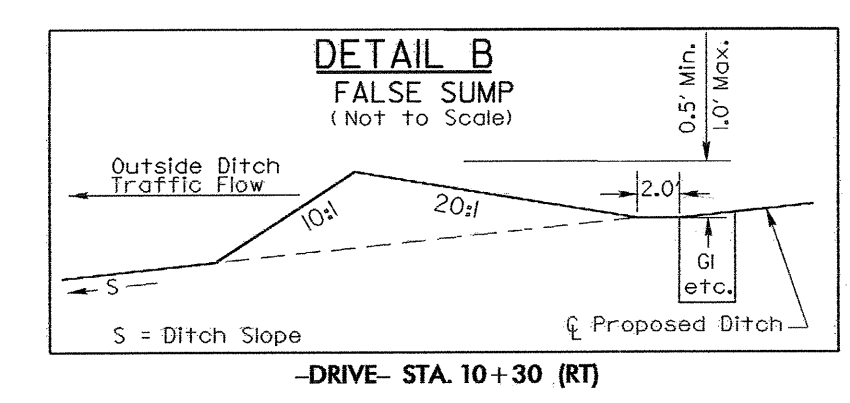
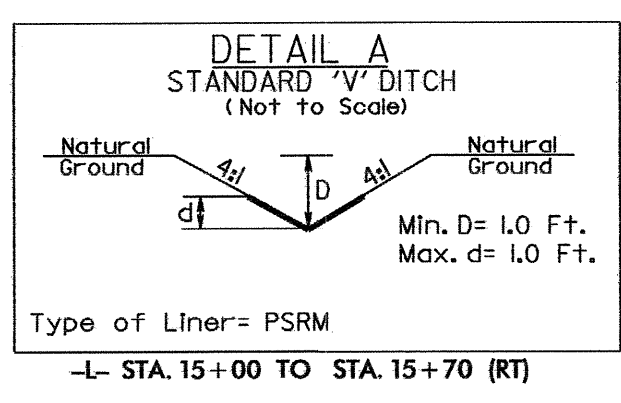
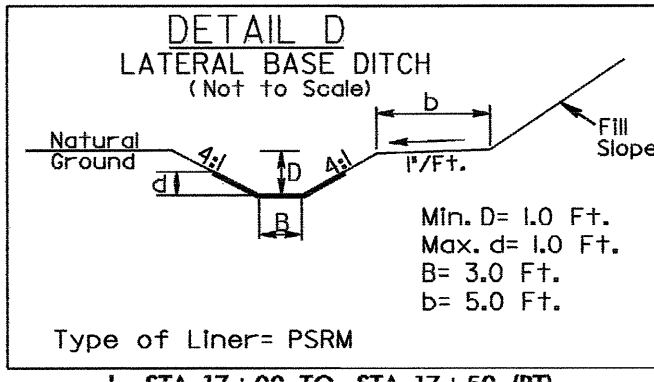
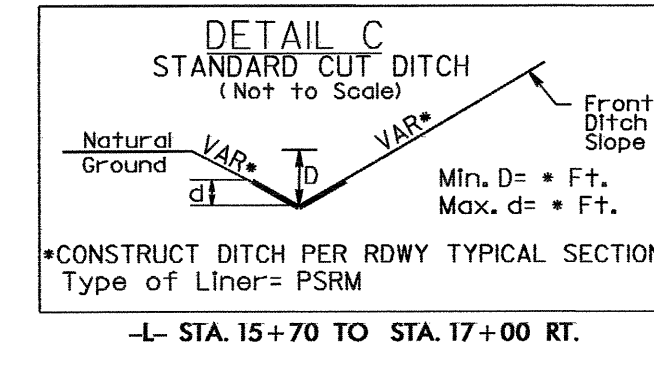
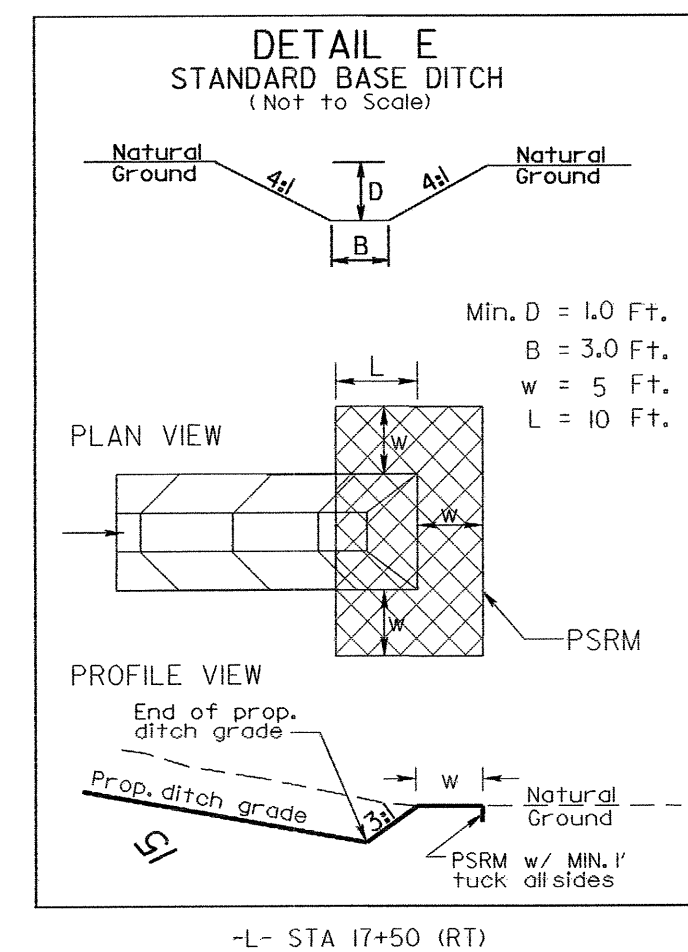
-L- STA. 12+03.68

-L- STA. 12+03.68

8/17/99

PROJECT REFERENCE NO.		SHEET NO.	
B-3863		EC-S/CONST.4	
RW SHEET NO.			
ROADWAY DESIGN ENGINEER		HYDRAULICS ENGINEER	

NAD 83



DEBRA F. BROWN  
DB 998 PG 387  
CLASS B RIP RAP WITH FILTER FABRIC EST. 3.5 TONS RIP RAP & 7.0 SQ. YD. FILTER FABRIC

MICHAEL J & YVONNE PETROLLA  
DB 855 PG 36  
STANDARD CUT DITCH W/PSRM SEE DETAIL C

DEBRA F. BROWN  
DB 998 PG 384

MICHAEL T. BREWER  
DB 1015 PG 686

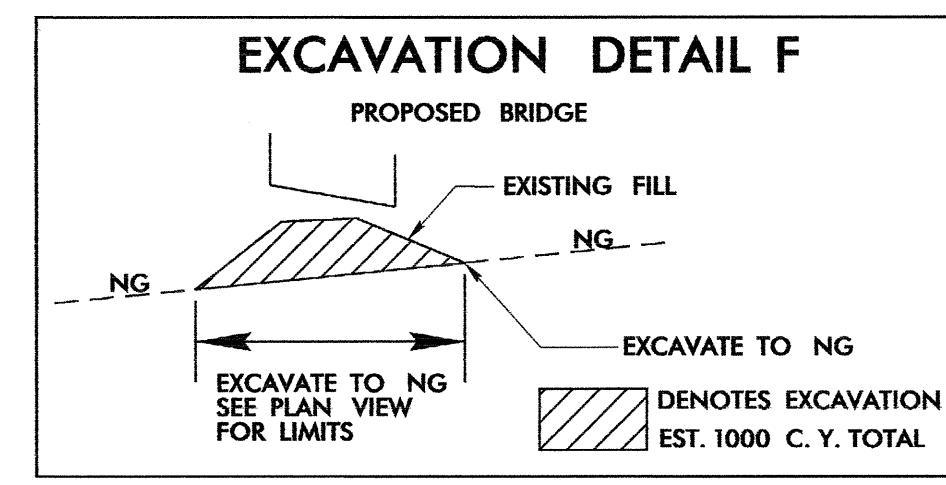
BRUCE TRIMBLE  
DB 1374 PG 989

ROBERT E. COVINGTON  
DB 1999 PG 377

ROBERT E. COVINGTON  
DB 1999 PG 377

VIVIAN RICHARDSON CREECH  
DB 731 PG 25

CARL B. CREECH  
DB 774 PG 232



-DRIVE-  
 PI Sta 10+42.35 Δ = 86° 30' 26.2" (LT) D = 38' 58" 18.7" L = 22.65' T = 14.1' R = 15.00'  
 PI Sta 11+65.70 Δ = 117° 32' 27.5" (RT) D = 163' 42" 08.0" L = 71.80' T = 57.72' R = 35.00'  
 -L-  
 PI Sta 15+64.43 Δ = 70° 17' 12.5" (RT) D = 13' 38" 30.7" L = 515.23' T = 295.66' R = 420.00' SE = EXIST.

SEE SHEET 5 FOR -L- PROFILE  
SEE SHEET 5 FOR -DRV- PROFILE

END CONSTRUCTION  
-L- STA. 22+50.00

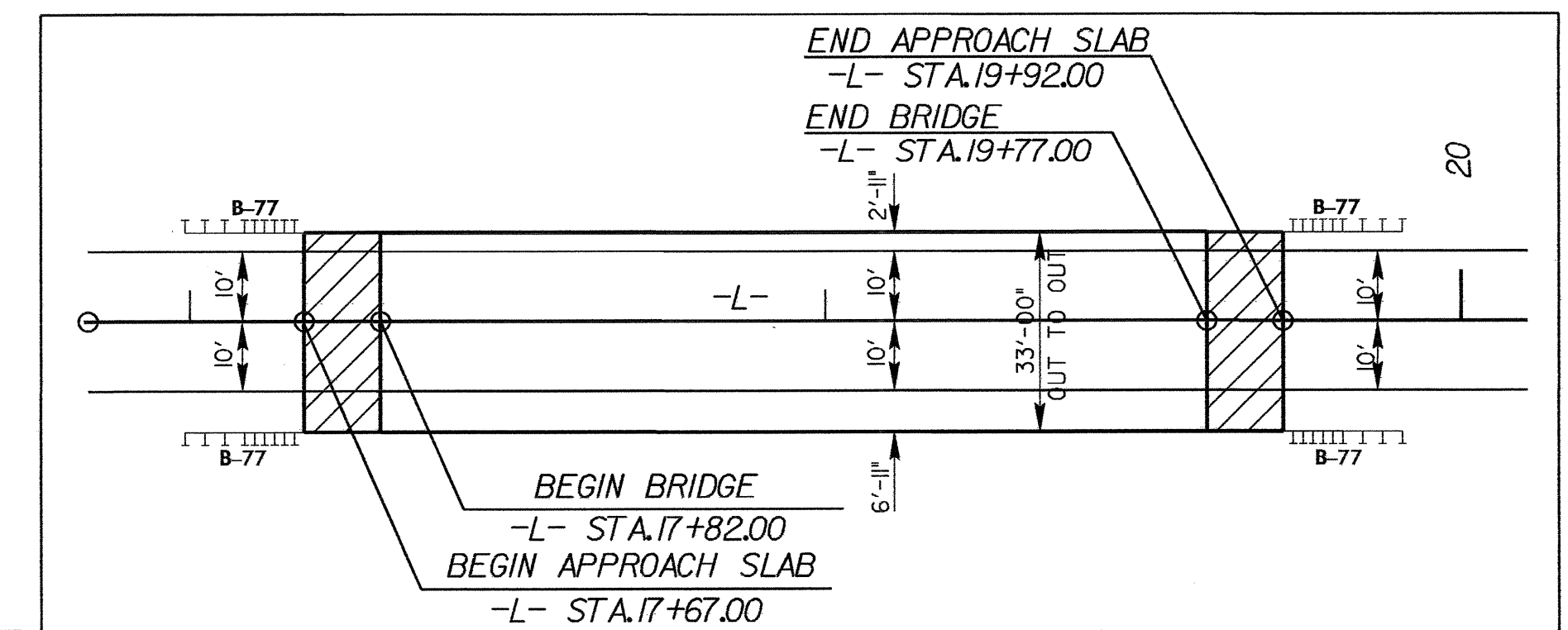
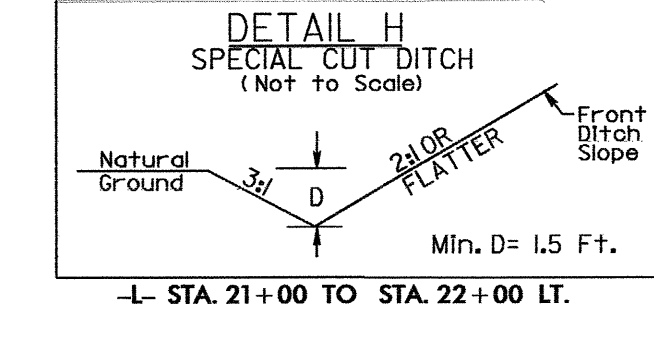
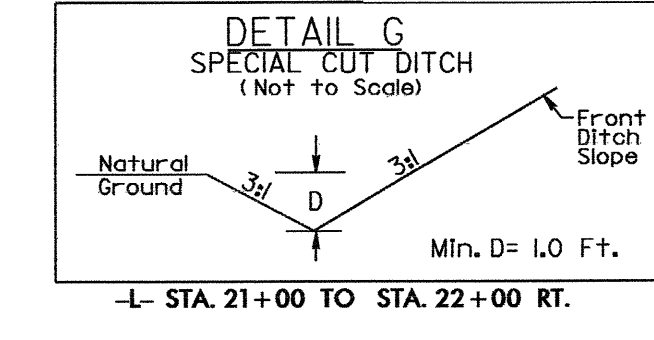
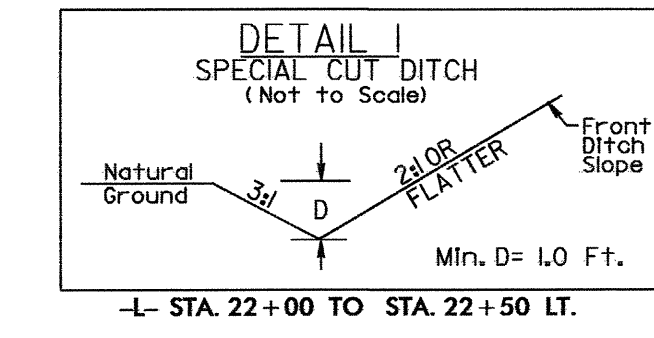
END APPROACH SLAB  
-L- STA. 19+92.00

END BRIDGE  
-L- STA. 19+77.00

END STATE PROJECT B-3863  
-L- STA. 22+00.00

NOTE: UTILIZE TEMPORARY ROCK SILT CHECK TYPE - A AND SPECIAL STILLING BASIN AS STILLING BASIN WHERE APPLICABLE.

INSTALL FILTER FABRIC UNDER TEMPORARY ROCK SILT CHECK(S) TYPE A IN PERMITTED WETLANDS.



DETAIL SHOWING PAVEMENT TO BRIDGE RELATIONSHIP