

TIP PROJECT: B-4269

STATE OF NORTH CAROLINA
DIVISION OF HIGHWAYS

PLAN FOR PROPOSED
HIGHWAY EROSION CONTROL

SAMPSON COUNTY

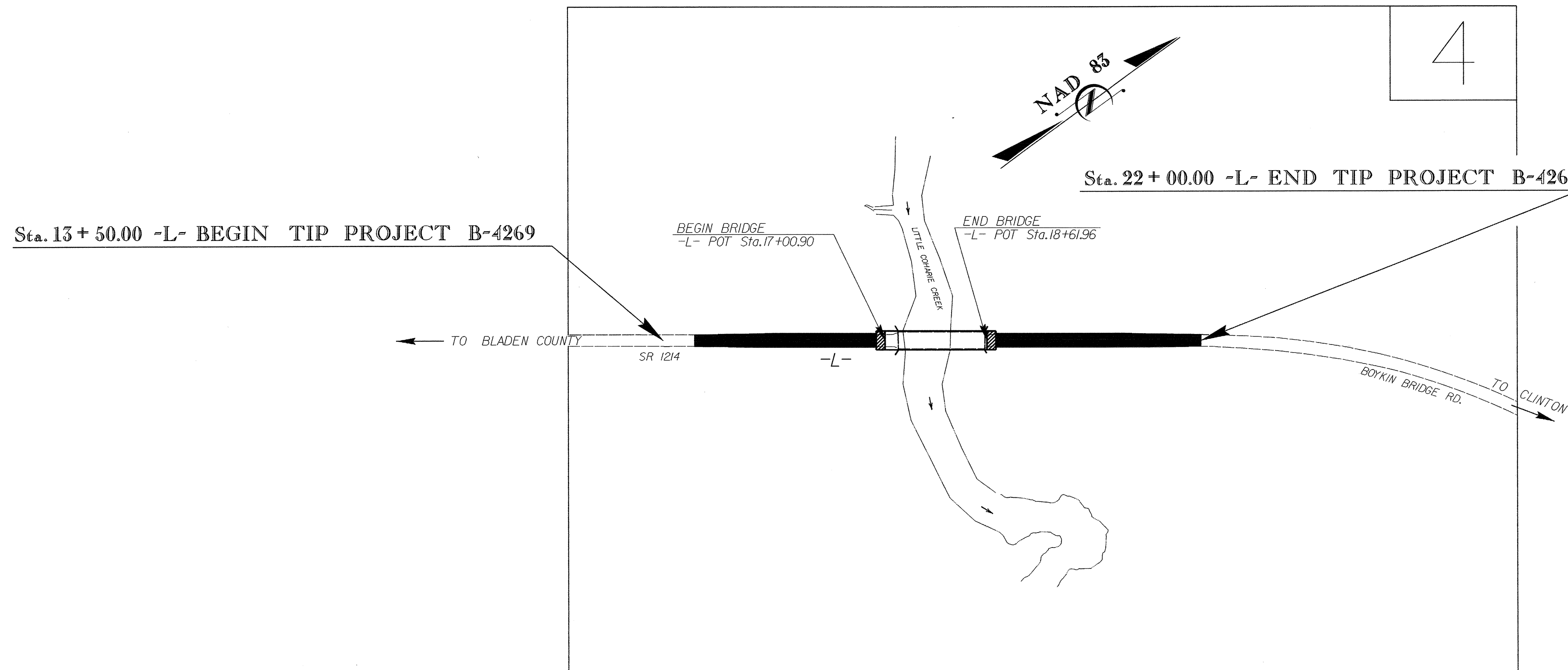
LOCATION: BRIDGE NO. 90 OVER LITTLE COHARIE CREEK ON SR 1214
TYPE OF WORK: GRADING, DRAINAGE, STRUCTURE, AND PAVING

STATE	STATE PROJECT REFERENCE NO.	SHEET NO.	TOTAL SHEETS
N.C.	B-4269	EC-1	
STATE PROJ. NO.	F.A. PROJ. NO.	DESCRIPTION	

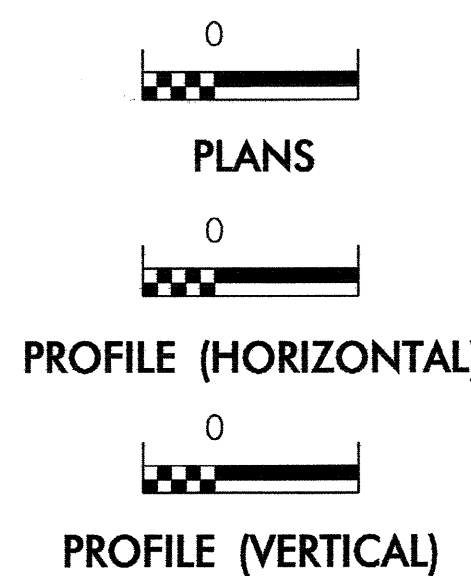
EROSION AND SEDIMENT CONTROL MEASURES

Std. #	Description	Symbol
	Streambank Reforestation.....	
1630.03	Temporary Silt Ditch.....	
1630.05	Temporary Diversion.....	
1605.01	Temporary Silt Fence.....	
1606.01	Special Sediment Control Fence.....	
1622.01	Temporary Berms and Slope Drains.....	
1630.01	Riser Basin.....	
1630.02	Silt Basin Type B.....	
1633.01	Temporary Rock Silt Check Type-A.....	
	Temporary Rock Silt Check Type-B.....	
1634.01	Temporary Rock Sediment Dam Type-A.....	
1634.02	Temporary Rock Sediment Dam Type-B.....	
1635.01	Rock Pipe Inlet Sediment Trap Type-A.....	
1635.02	Rock Pipe Inlet Sediment Trap Type-B.....	
1630.04	Stilling Basin.....	
	Rock Inlet Sediment Trap:	
1632.01	Type A.....	
1632.02	Type B.....	
1632.03	Type C.....	
	Skimmer Basin.....	
	Tiered Skimmer Basin.....	

**THIS PROJECT CONTAINS
EROSION CONTROL PLANS
FOR CLEARING AND
GRUBBING PHASE OF
CONSTRUCTION.**



GRAPHIC SCALE



ROADSIDE ENVIRONMENTAL UNIT
DIVISION OF HIGHWAYS
STATE OF NORTH CAROLINA

Prepared In the Office of:
ROADSIDE ENVIRONMENTAL UNIT
1 South Wilmington St.
Raleigh, NC 27611
2006 STANDARD SPECIFICATIONS

Roadway Standard Drawings

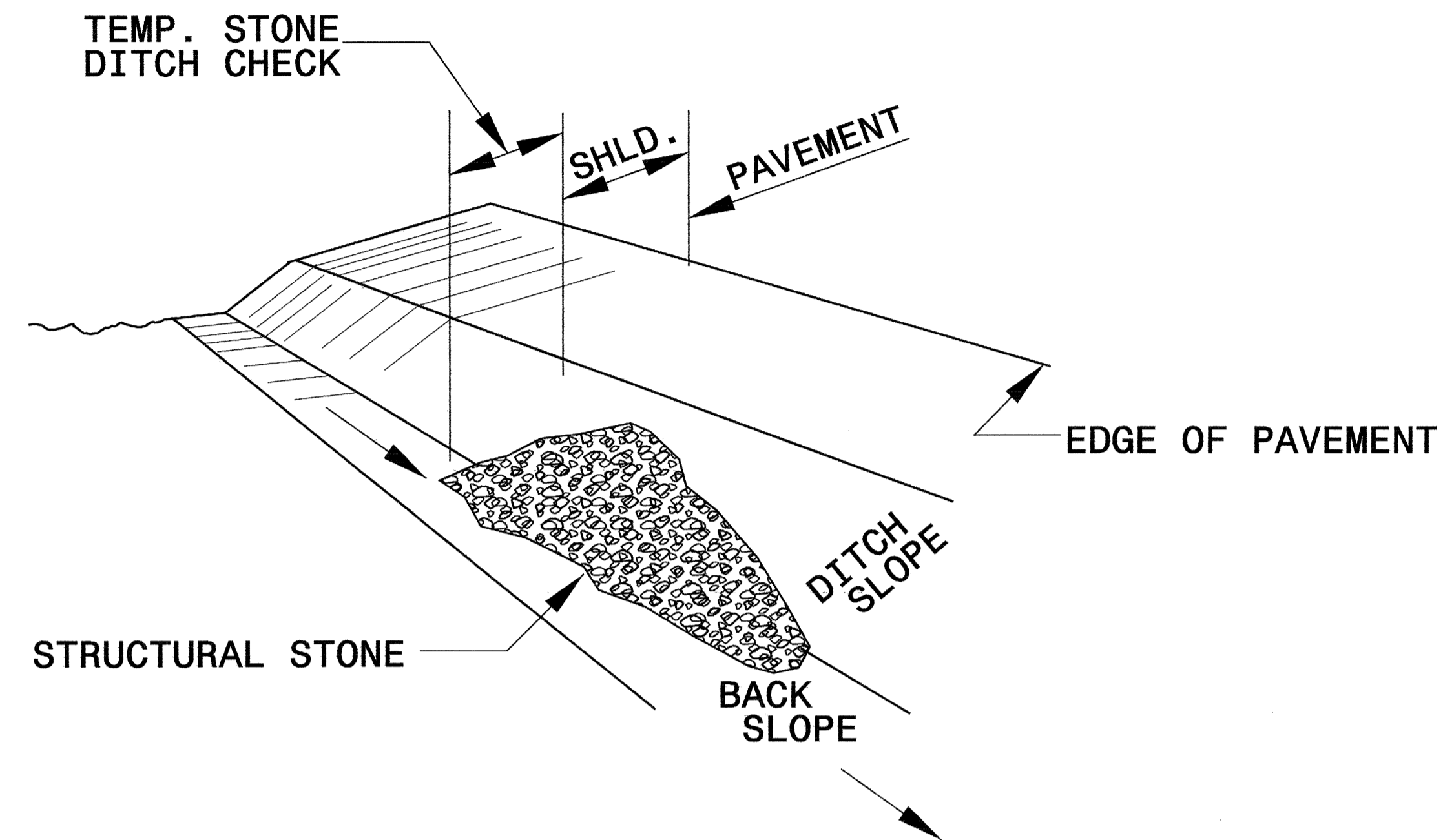
The following roadway english standards as appear in "Roadway Standard Drawings"- Roadway Design Unit - N. C. Department of Transportation - Raleigh, N. C., dated July 18, 2006 and the latest revision thereto are applicable to this project and by reference hereby are considered a part of these plans.

- | | |
|--|--|
| 1605.01 Temporary Silt Fence | 1632.03 Rock Inlet Sediment Trap Type C |
| 1607.01 Gravel Construction Entrance | 1633.01 Temporary Rock Silt Check Type A |
| 1622.01 Temporary Berms and Slope Drains | 1634.02 Temporary Rock Sediment Dam Type B |
| 1630.03 Temporary Silt Ditch | |

19-JAN-2007 12:48:42 C:\envr\environmental\design\4269\edl_tsh.dgn

PROJECT REFERENCE NO. B-4269	SHEET NO. EC-2
RW SHEET NO.	
ROADWAY DESIGN ENGINEER	HYDRAULICS ENGINEER

TEMPORARY ROCK SILT CHECK TYPE 'B' DETAIL

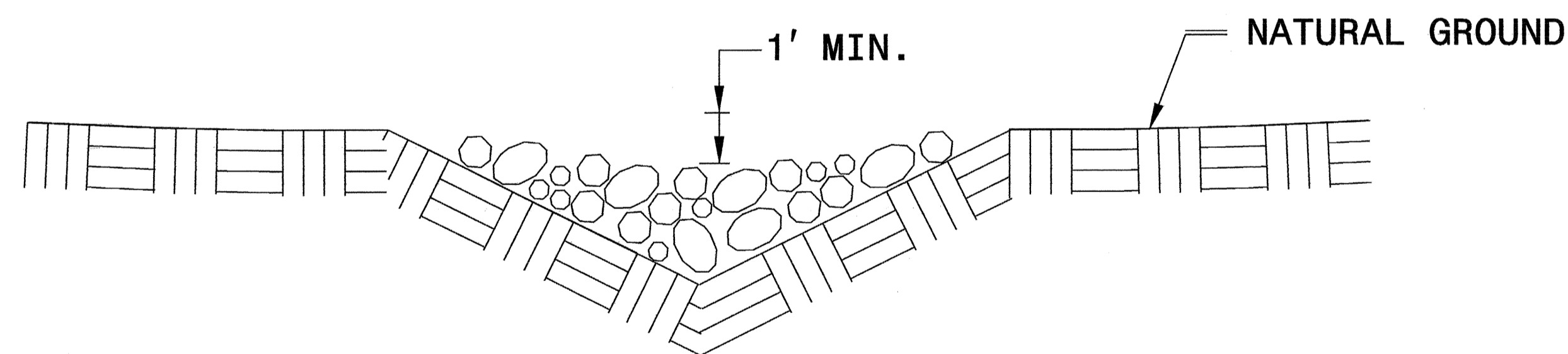


ISOMETRIC VIEW

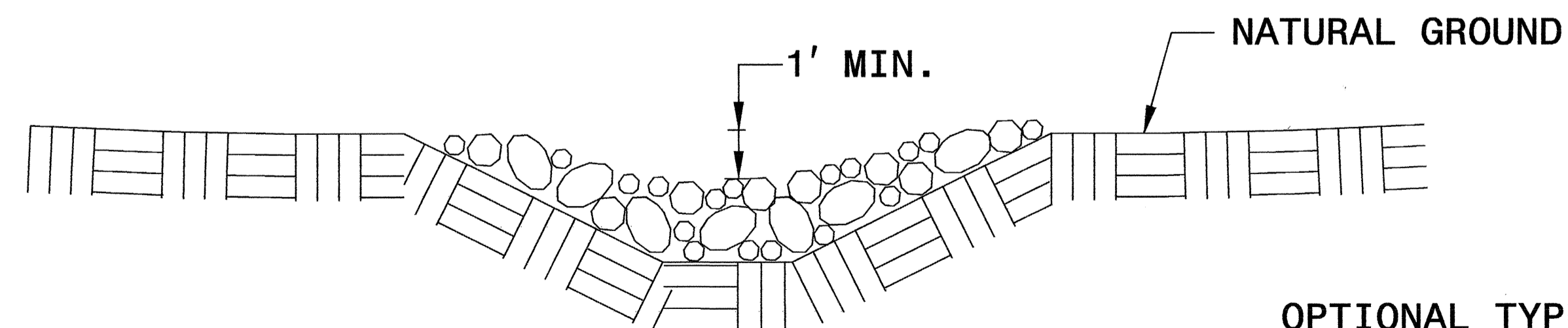
NOTES:

USE CLASS 'B' EROSION CONTROL STONE FOR STRUCTURAL STONE.

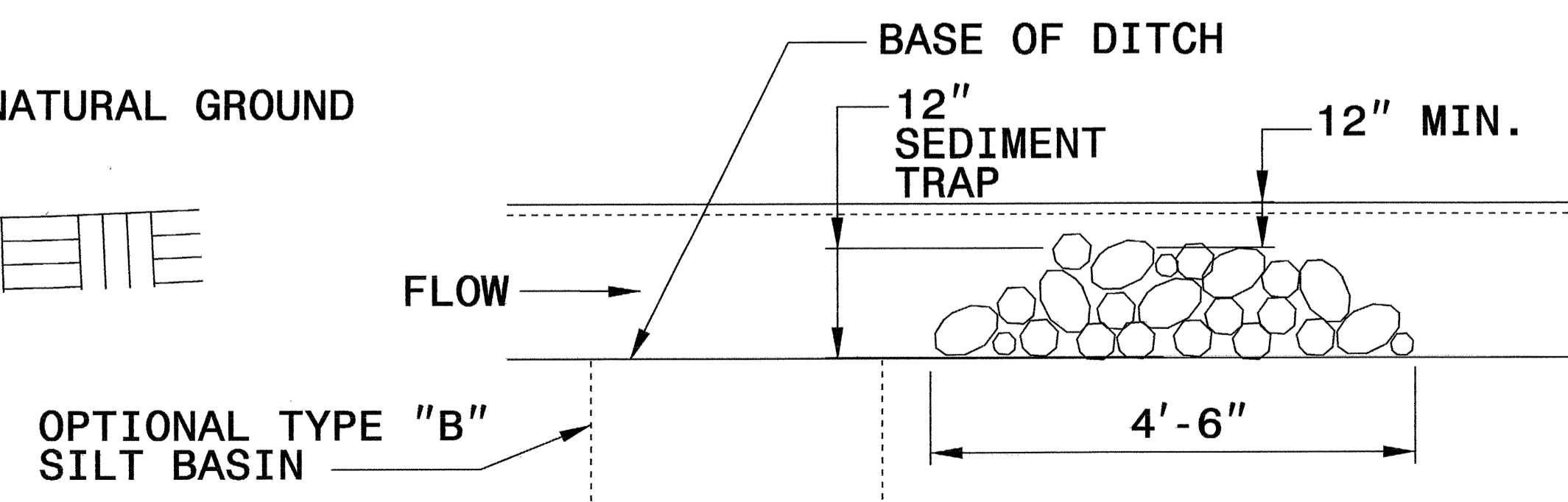
THE ENGINEER MAY DIRECT THE OPTION OF CLASS "A" STONE FOR SITES HAVING LESS THAN ONE (1) ACRE DRAINAGE AREA AND A DITCH GRADE LESS THAN 3%.



**CROSS SECTION
VEE DITCH**



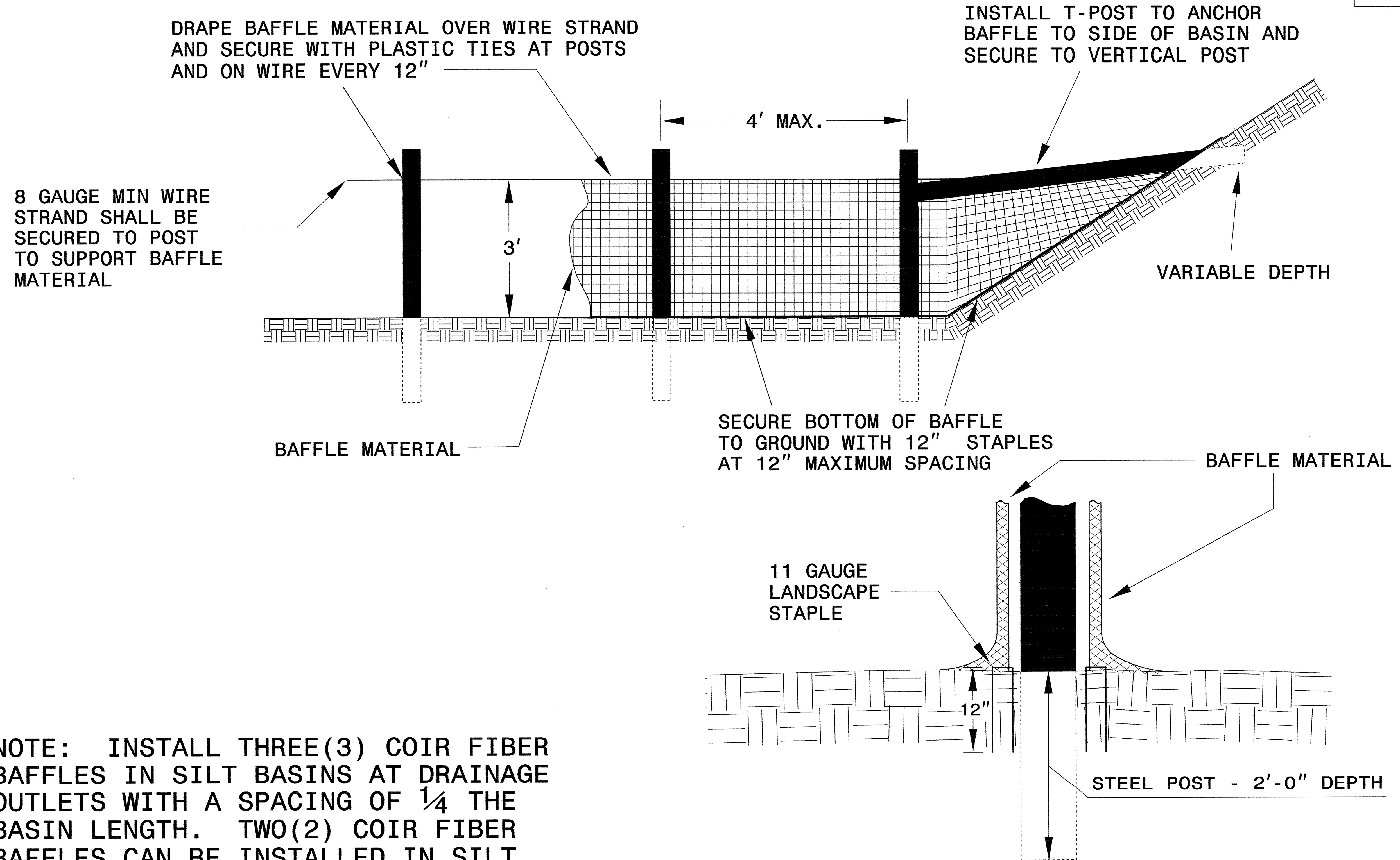
**CROSS SECTION
TRAPEZOIDAL DITCH**



ELEVATION VIEW

PROJECT REFERENCE NO. B-4269	SHEET NO. EC-2A
RW SHEET NO.	
ROADWAY DESIGN ENGINEER	HYDRAULICS ENGINEER

COIR FIBER BAFFLE DETAIL



NOTE: INSTALL THREE (3) COIR FIBER BAFFLES IN SILT BASINS AT DRAINAGE OUTLETS WITH A SPACING OF $\frac{1}{4}$ THE BASIN LENGTH. TWO (2) COIR FIBER BAFFLES CAN BE INSTALLED IN SILT BASINS LESS THAN 20 FT. IN LENGTH WITH A SPACING OF $\frac{1}{3}$ THE BASIN LENGTH.

BAFFLE MATERIAL SHALL BE SECURED TO THE BOTTOM AND SIDES OF BASIN USING 12" LANDSCAPE STAPLES

CLEARING AND GRUBBING
EROSION CONTROL FOR
CONSTRUCTION SHEET 4

NOTE:
PLACE TEMPORARY ROCK SEDIMENT DAMS TYPE - B
AND TEMPORARY ROCK SILT CHECKS TYPE - A AT
DRAINAGE OUTLETS.

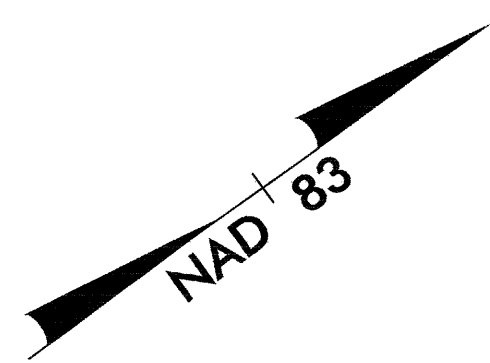
NOTE:
UTILIZE TEMPORARY ROCK SEDIMENT DAM TYPE - B
AS STILLING BASIN WHERE APPLICABLE.

PROJECT REFERENCE NO. B-4269	SHEET NO. EC-4/CONST.4
ROADWAY DESIGN ENGINEER	HYDRAULICS ENGINEER

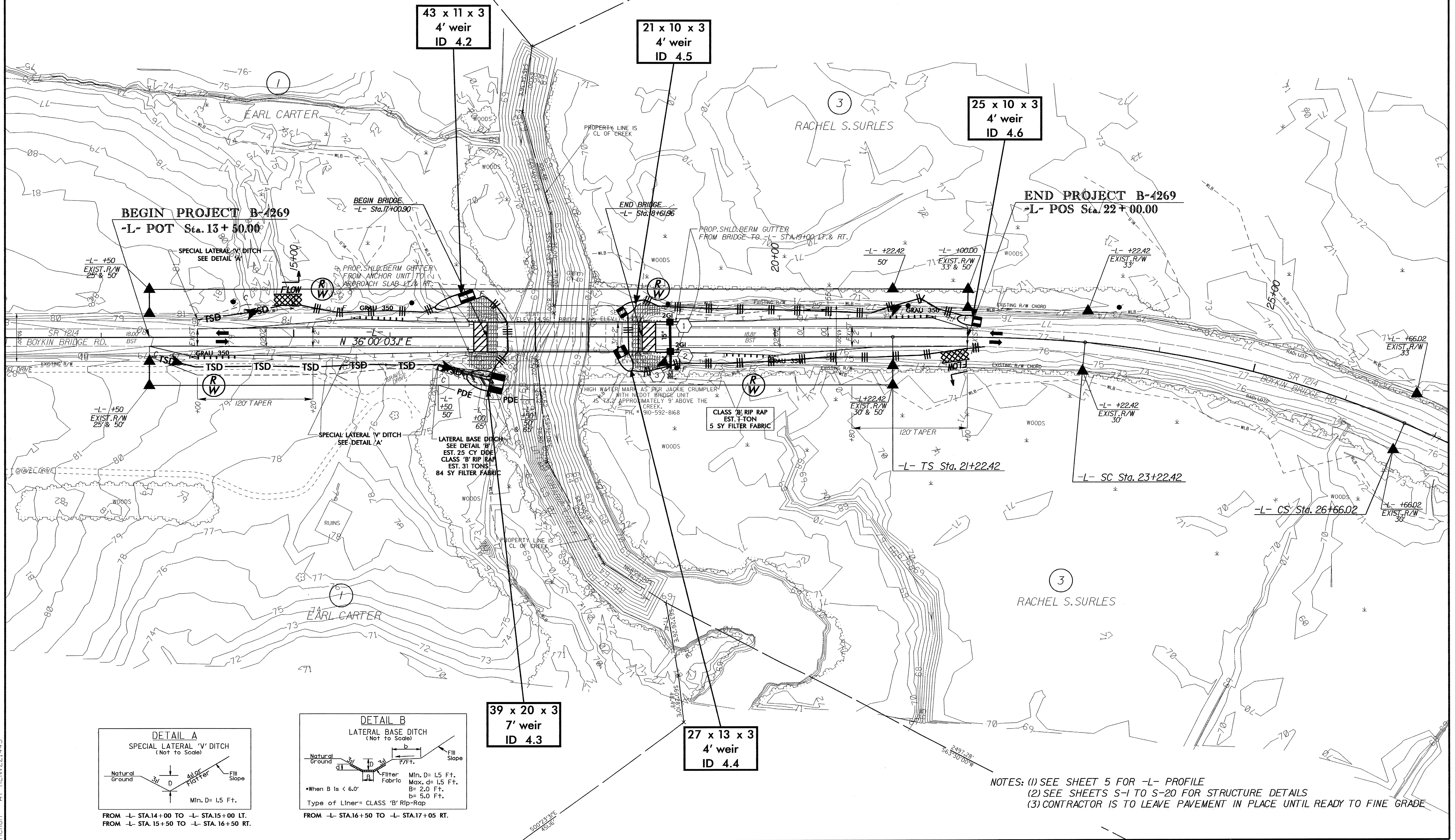
-L-
Pls Sta 22+55.81
Os = 5'12' 31.3"
Ls = 200.00'
LT = 133.39'
ST = 66.72'

PI Sta 24+95.63
Δ = 17' 53' 49.2" (RT)
D = 5'12' 31.3"
L = 343.60'
T = 173.21'
R = 1,100.00'
SE = EXISTING

Pls Sta 27+32.74
Os = 5'12' 31.3"
Ls = 200.00'
LT = 133.39'
ST = 66.72'



H.J.CARR JR.



BEGIN PROJECT B-4269
-L- POT Sta. 13+50.00

43 x 11 x 3
4' weir
ID 4.2

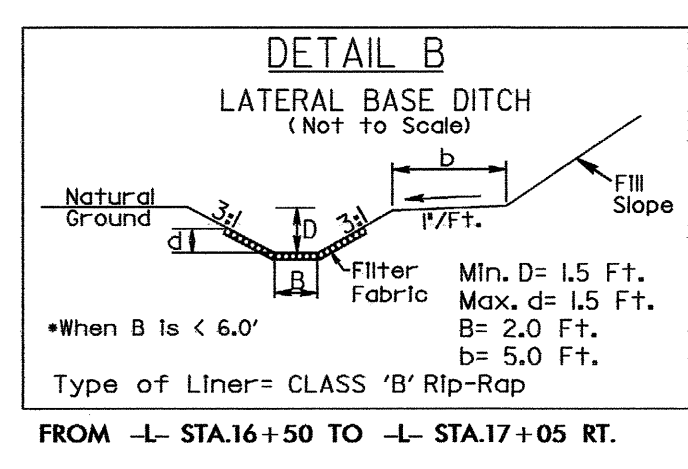
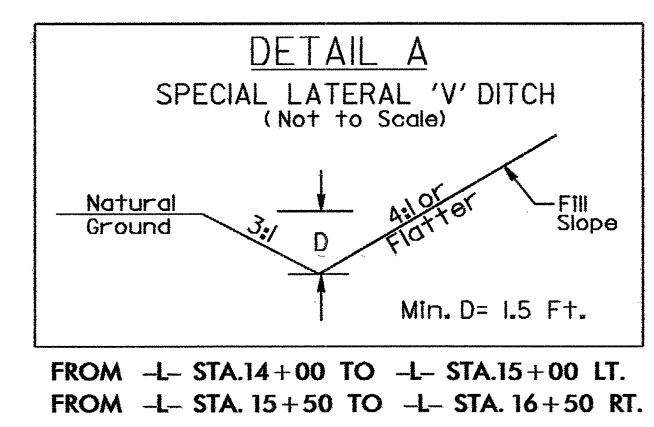
21 x 10 x 3
4' weir
ID 4.5

25 x 10 x 3
4' weir
ID 4.6

END PROJECT B-4269
-L- POS Sta. 22+00.00

39 x 20 x 3
7' weir
ID 4.3

27 x 13 x 3
4' weir
ID 4.4



NOTES: (1) SEE SHEET 5 FOR -L- PROFILE
(2) SEE SHEETS S-1 TO S-20 FOR STRUCTURE DETAILS
(3) CONTRACTOR IS TO LEAVE PAVEMENT IN PLACE UNTIL READY TO FINE GRADE

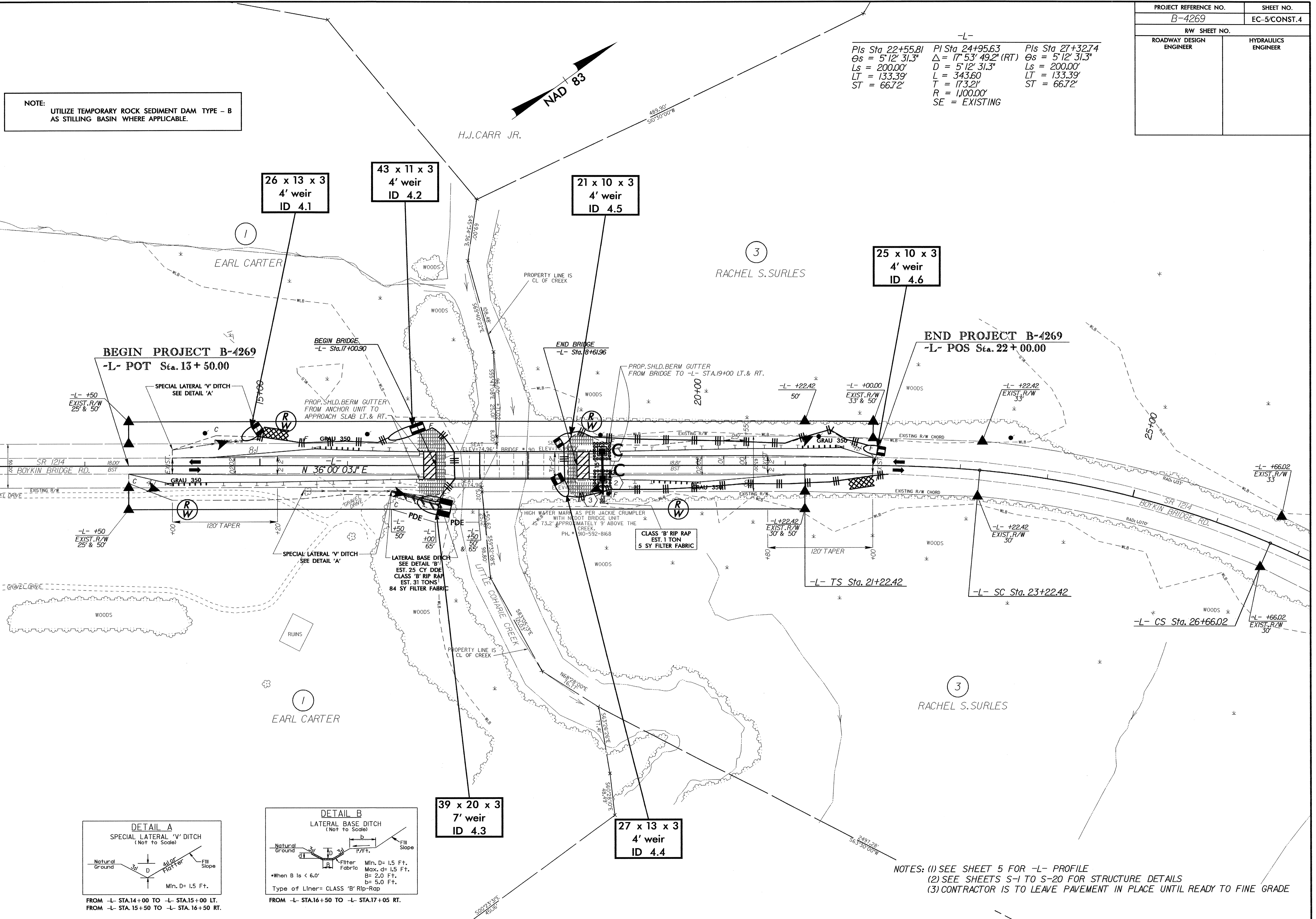
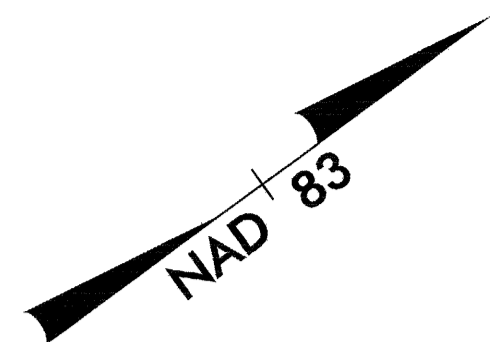
19-JAN-2007 12:51
 c:\documents_and_settings\nchan\desktop\4269\environmental\design\b4269_rdy_psh.dgn
 nchan AT RENY221445

PROJECT REFERENCE NO.	SHEET NO.
B-4269	EC-5/CONST.4
R/W SHEET NO.	
ROADWAY DESIGN ENGINEER	HYDRAULICS ENGINEER

-L-

Pls Sta 22+55.81	Pl Sta 24+95.63	Pls Sta 27+32.74
Os = 5'12' 31.3"	Δ = 17' 53' 49.2" (RT)	Os = 5'12' 31.3"
Ls = 200.00'	D = 5'12' 31.3"	Ls = 200.00'
LT = 133.39'	L = 343.60'	LT = 133.39'
ST = 66.72'	T = 173.21'	ST = 66.72'
	R = 1,000.00'	
	SE = EXISTING	

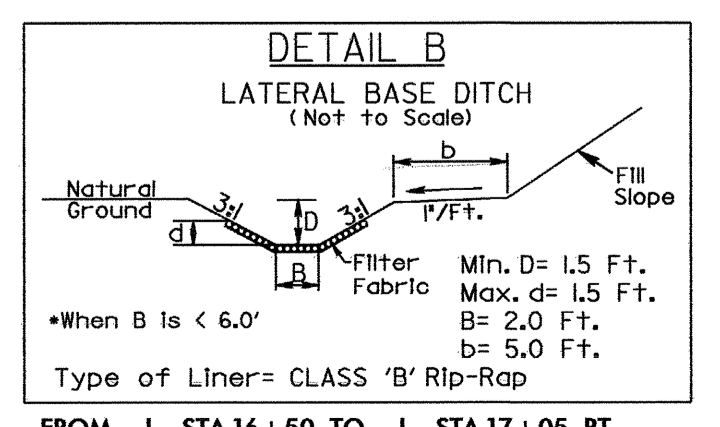
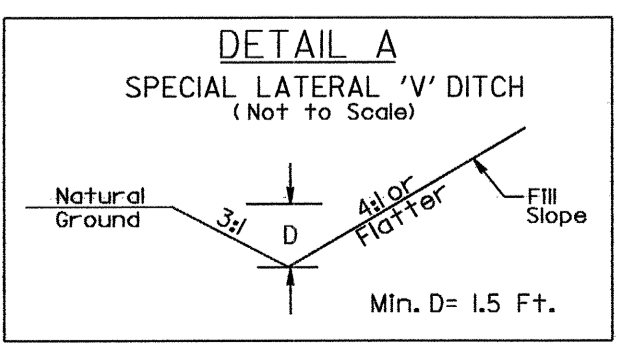
NOTE:
UTILIZE TEMPORARY ROCK SEDIMENT DAM TYPE - B
AS STILLING BASIN WHERE APPLICABLE.



BEGIN PROJECT B-4269
-L- POT Sta. 13+50.00

END BRIDGE
-L- Sta. 19+00.96

END PROJECT B-4269
-L- POS Sta. 22+00.00



NOTES: (1) SEE SHEET 5 FOR -L- PROFILE
(2) SEE SHEETS S-1 TO S-20 FOR STRUCTURE DETAILS
(3) CONTRACTOR IS TO LEAVE PAVEMENT IN PLACE UNTIL READY TO FINE GRADE

19-JAN-2007 12:51
c:\documents and settings\nchan\desktop\b4269\environmental\design\b4269_rdy_psh.dgn
nchan AT REV221445