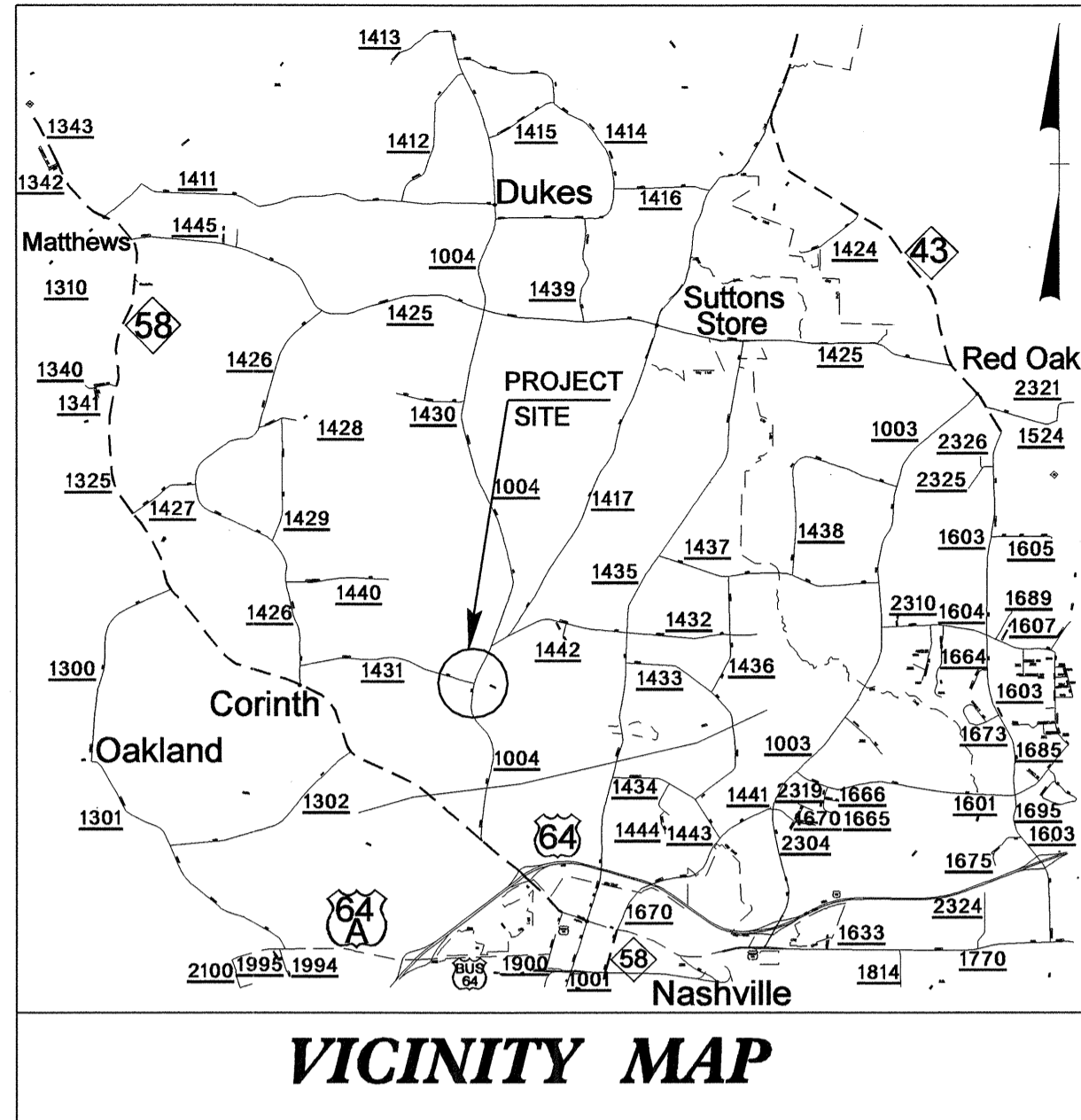


09/08/99

See Sheet 1-A For Sheet Index of Sheets



STATE OF NORTH CAROLINA
DIVISION OF HIGHWAYS

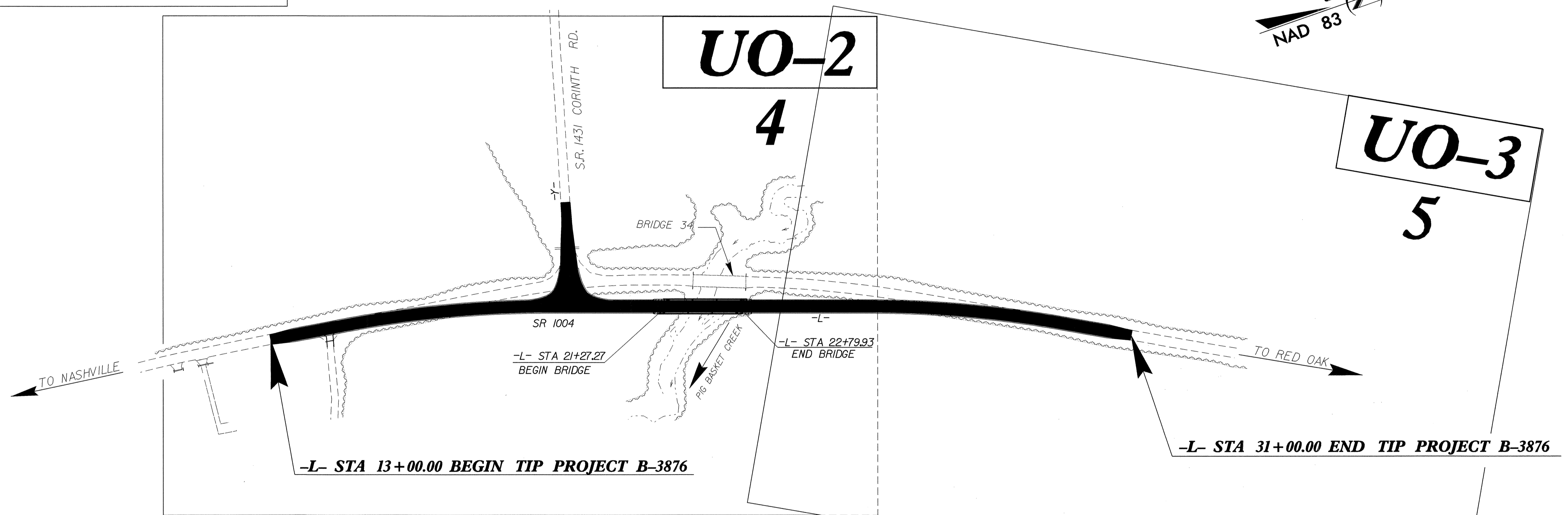
**UTILITIES BY OTHERS PLANS
NASH COUNTY**

LOCATION: BRIDGE 34 ON SR 1004 OVER PIG BASKET CREEK

TYPE OF WORK: UTILITIES

T.I.P. NO.	SHEET NO.
B-3876	UO-1

TIP B-3876



INDEX OF SHEETS	
SHEET NO.	DESCRIPTION
UO-1	TITLE SHEET
UO-2 THRU UO-3	UTILITIES BY OTHERS PLAN SHEETS

UTILITY OWNERS ON PROJECT
(1) PROGRESS ENERGY
(2) EMBARQ
(3) TIME WARNER

	PREPARED IN THE OFFICE OF: DIVISION OF HIGHWAYS DESIGN SERVICES UTILITY SECTION
	1591 MAIL SERVICES CENTER RALEIGH, NC 27699-1591 PHONE (919) 250-4128 FAX (919) 250-4119
Roger Worthington, P.E. Steve Mckee, P.E. Alonza Yancey	UTILITIES SECTION ENGINEER UTILITIES SQUAD LEADER PROJECT ENGINEER UTILITIES PROJECT DESIGNER

29-JAN-2007 15:25
 Z:\j11\11\proj\proj\proj\b3876_ut_tsh_uo1.dgn
 \$\$\$USERNAME\$\$\$

UTILITIES BY OTHERS

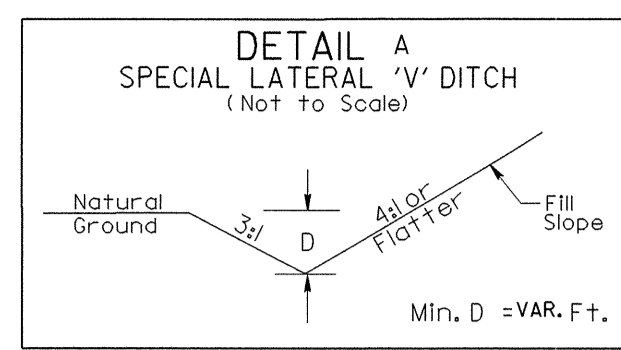
NOTE:
ALL PROPOSED UTILITY WORK
SHOWN ON THIS SHEET WILL
BE DONE BY OTHERS

SEE SHEET 6 FOR -L- PROFILE
SEE SHEET 7 FOR -Y- PROFILE

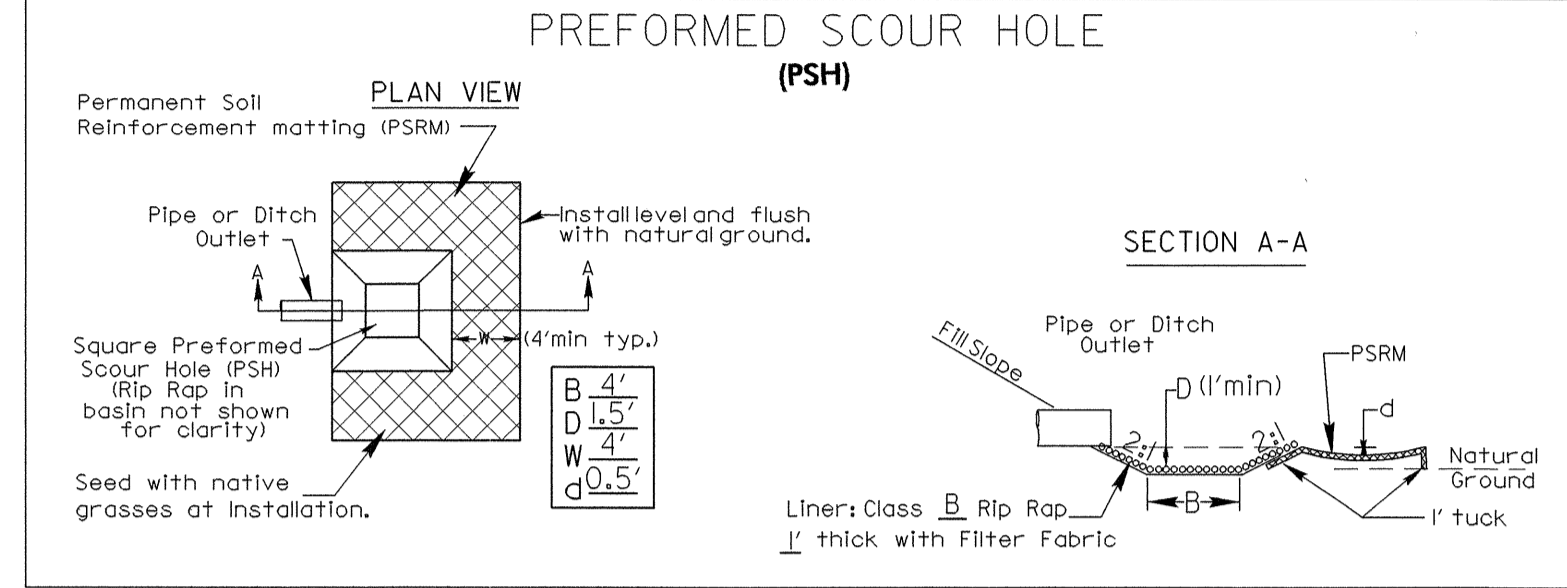
DATUM DESCRIPTION

THE LOCALIZED COORDINATE SYSTEM DEVELOPED FOR THIS PROJECT IS BASED ON THE STATE PLANE COORDINATES ESTABLISHED BY NCDOT FOR MONUMENT "B3876-1" WITH NAD 1983/95 STATE PLANE GRID COORDINATES OF NORTHING: 824807.9889 (ft) EASTING: 2304016.0738 (ft) THE AVERAGE COMBINED GRID FACTOR USED ON THIS PROJECT (GROUND TO GRID) IS: 99892989 THE N.C. LAMBERT GRID BEARING AND LOCALIZED HORIZONTAL GROUND DISTANCE FROM "B3876-1" TO -L- STA 13+00 IS S 5° 28' 04.74" W 601.795' ALL LINEAR DIMENSIONS ARE LOCALIZED HORIZONTAL DISTANCES VERTICAL DATUM USED IS NVD 88

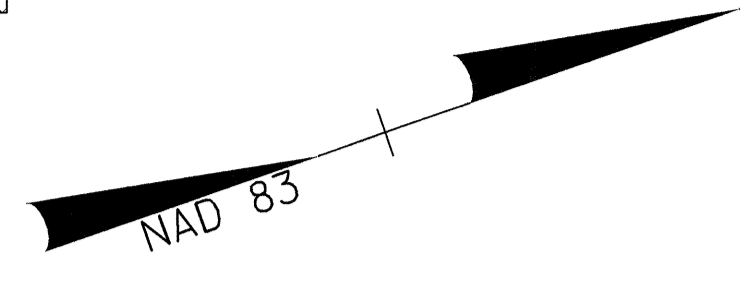
ADT 2007	330	130
ADT 2025	400	200
3,930		3,730
6,300 SR 1004		6,100 SR 1004



STA 14+00-L- TO STA 17+50-L- (RIGHT)



STA 20+71-L- (RIGHT)
STA 20+92 -L- (LEFT)
STA 23+04 -L- (LEFT)



-L-
PI Sta 11+08.97
 $\Delta = 3^\circ 17' 31.1''$ (RT)
 $D = 2^\circ 08' 48.6''$
 $L = 153.34'$
 $T = 76.69'$
 $R = 2,668.83'$
e = EXISTING

BL-101 POT 5+00.00
-L- POT 13+19.62 (25.37' L.T.)

NOTE: USE 5.0' O/S FOR 3-CENTERED CURVE (120'-40'-120')

B3876-1 -BL- PINC 10+81.59=
-BY- POT 9+99.43
-L- POC 18+90.46 (71.44' LT)

BM # 205
-L- STA 12+29.11
65.71' LEFT
ELEV=172.23'

GUY W. & BEVERLY VICK
D.B. 877 PG. 305
P.B. 9 PG. 57

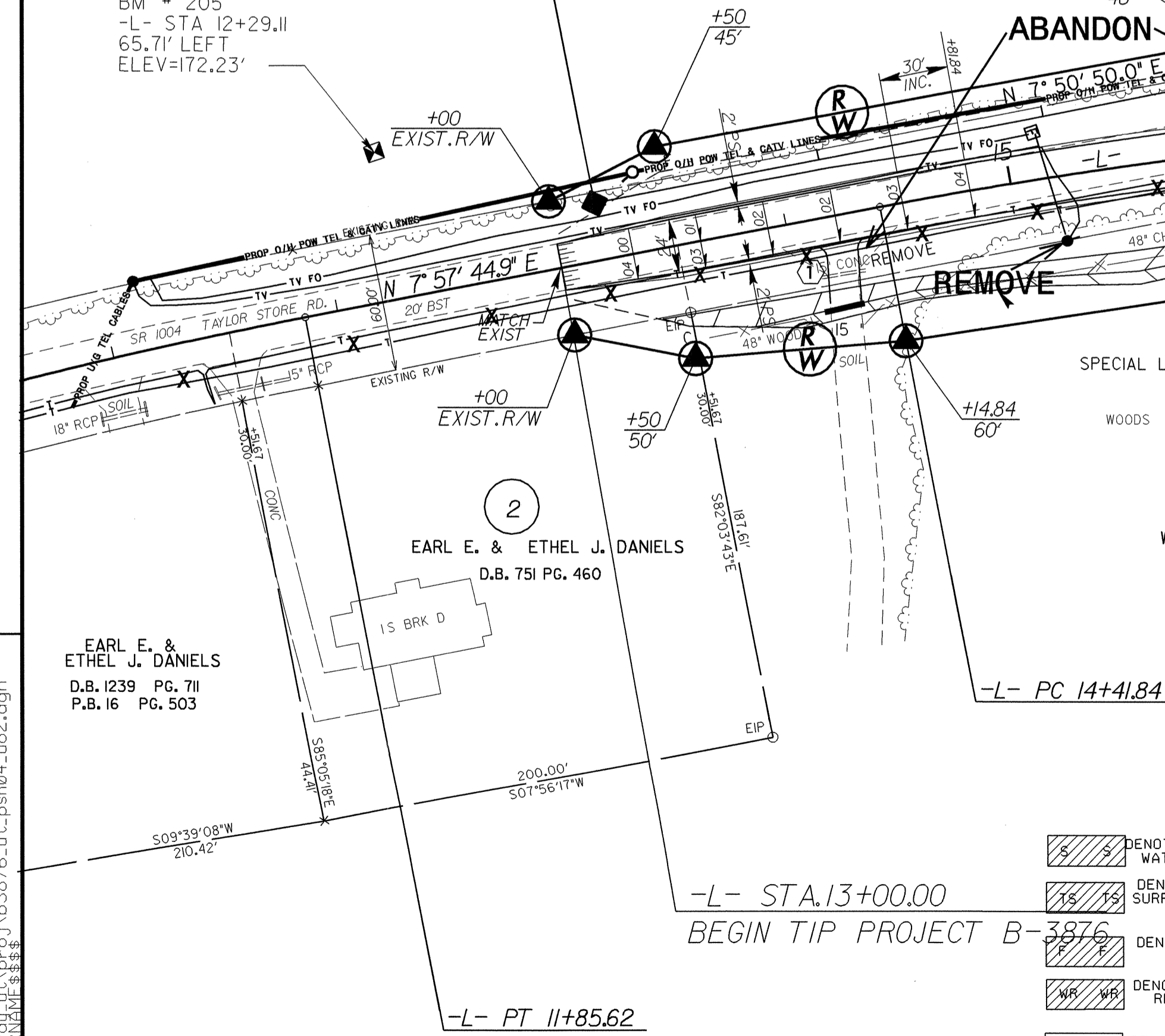
WOODS
GRADE TO DRAIN FROM
STA 16+50-L- TO 18+50-L- (LEFT)

SITE 1
NOTE: REMOVE EXISTING 42" CMP AND REPLACE WITH A 60" INCH RCP. BURY THE 60" INCH RCP A FOOT.
+50 -Y- EXIST. R/W

AVR LIMITED PARTNERSHIP
D.B. 1834 PG. 825
P.B. 18 PG. 298

BL- 103 PINC 14+97.15
-L- POT 23+05.99 (65.95' LT.)

MORRIS BATTLE
NO DEED REFERENCE



SPECIAL LATERAL V DITCH (SEE DETAIL A)

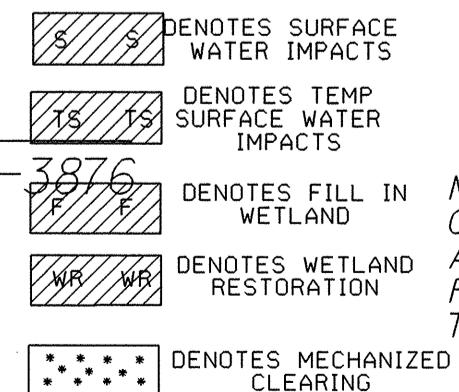
NOTE: USE SHOULDER BERM CUTTER:
STA 20+65-L- TO STA 20+97-L- (RIGHT)
STA 23+12-L- TO STA 23+35-L- (RIGHT)
STA 20+92-L- TO STA 20+97-L- (LEFT)
STA 23+12-L- TO STA 23+35-L- (LEFT)

-L-
PI Sta 16+62.50
 $\Delta = 10^\circ 57' 37.5''$ (RT)
 $D = 2^\circ 29' 28.0''$
 $L = 439.98'$
 $T = 220.66'$
 $R = 2,300.00'$
e = SEE PLAN

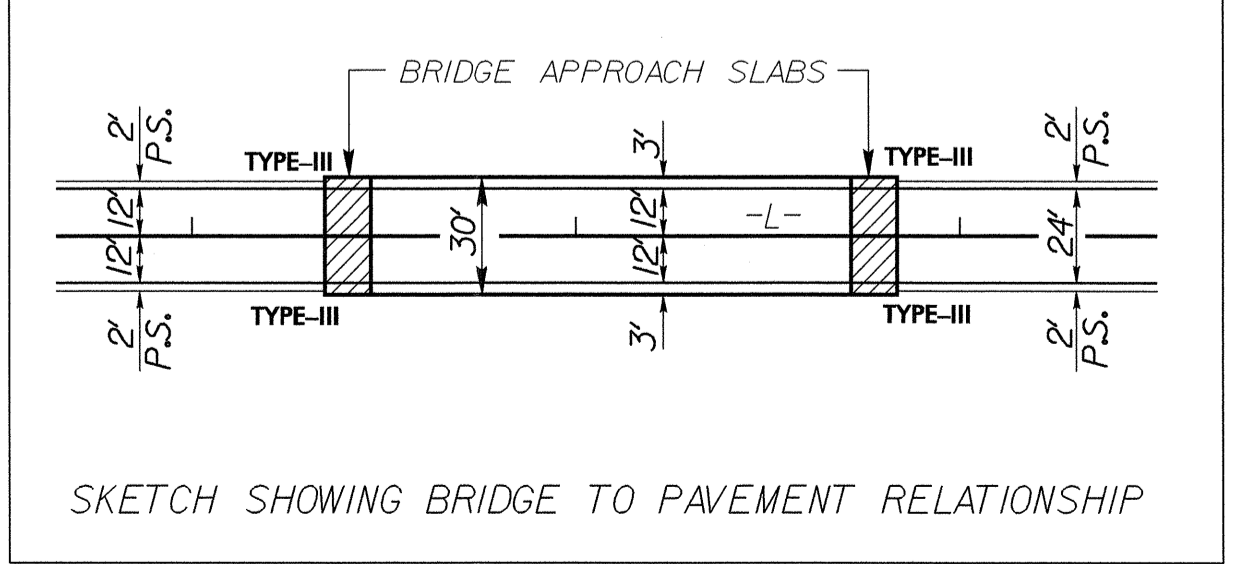
PSH Q10 = 50 CFS
BEGIN APPR. SLAB
WOODS

SITE 2
-L- 23+03.87
END APPR. SLAB
-L- 22+79.93
END BRIDGE

JACKIE A PLYER HEIRS
NO DEED REFERENCE
P.B. 14 PG. 70



NOTE: THE RESIDENT ENGINEER IS TO CONTACT DIVISION TRAFFIC ENGINEER FOR APPROPRIATE APPROACH CURVE SIGNING PRIOR TO OPENING THE PROJECT FOR TRAFFIC.



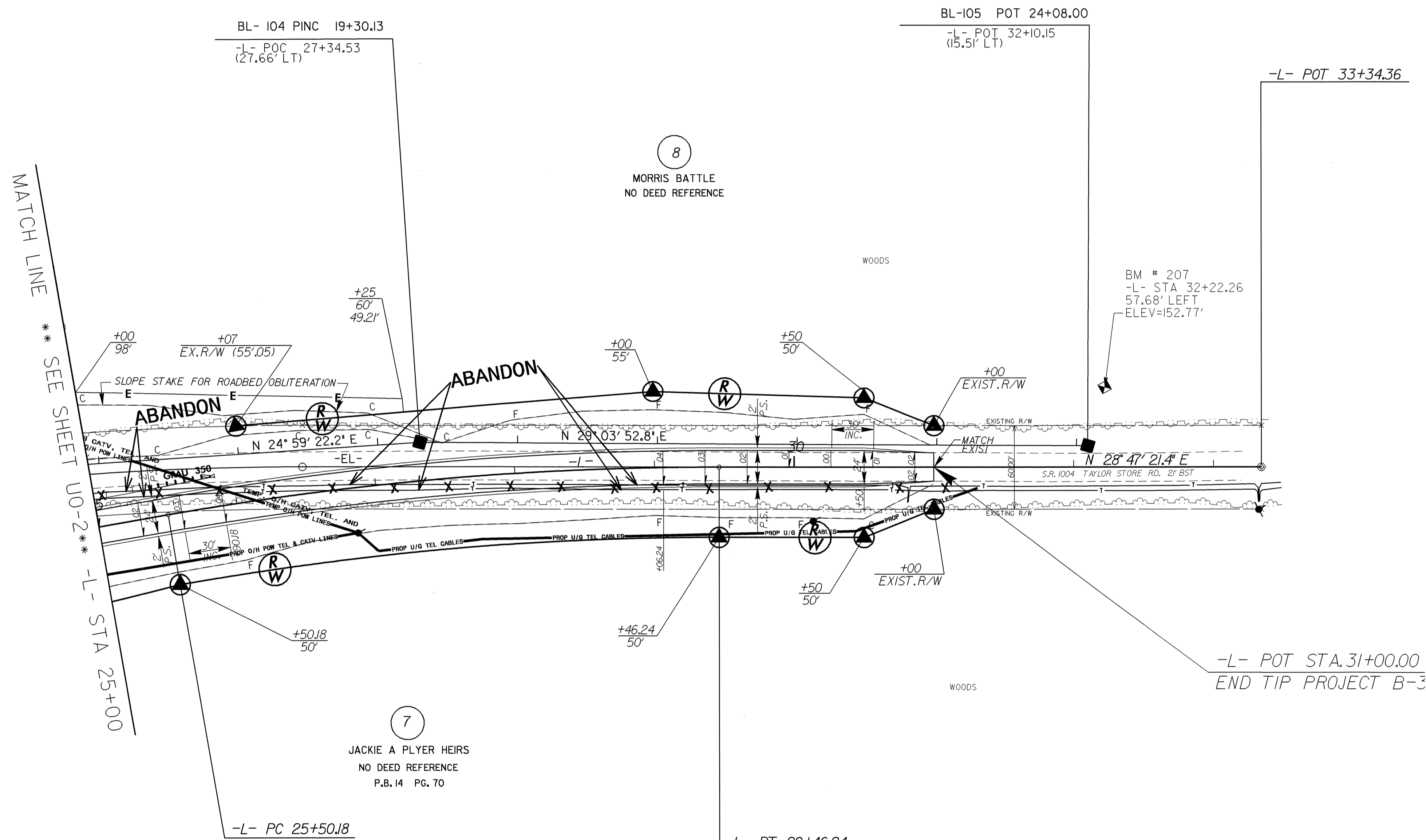
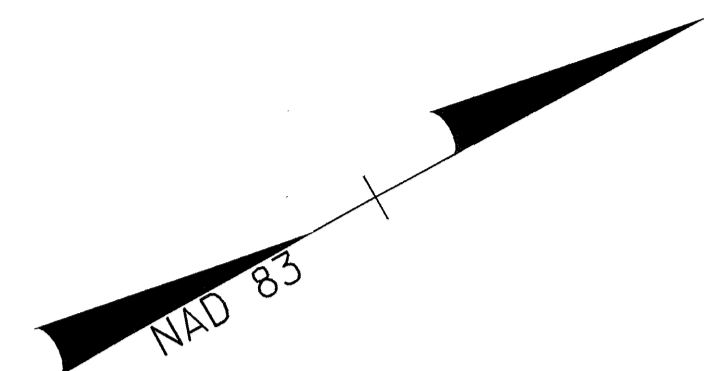
MATCH LINE ** SEE SHEET UO-3 ** -L- STA 25+00

28-WAR-2007 (0:21) \b3876-ut-psh04_uo2.dgn

UTILITIES BY OTHERS

NOTE:
ALL PROPOSED UTILITY WORK
SHOWN ON THIS SHEET WILL
BE DONE BY OTHERS

SEE SHEET 6 FOR -L- PROFILE



-L-
PI Sta 27+48.70
 $\Delta = 9^{\circ} 51' 59.0''$ (RT)
 $D = 2^{\circ} 29' 28.0''$
 $L = 396.06'$
 $T = 198.52'$
 $R = 2,300.00'$
 $e = \text{SEE PLAN}$

MATCH LINE ** SEE SHEET U0-2 ** -L- STA 25+00

-L- POT STA. 31+00.00
END TIP PROJECT B-3

REVISIONS

5/14/99
r:\proj\28-MAR-2007\021\163876_ut_psh05_uo3.dgn