

STATE	STATE PROJECT REFERENCE NO.	SHEET NO.	TOTAL SHEETS
N.C.	B-3481	EC-1	
STATE PROJ. NO.	F.A. PROJ. NO.	DESCRIPTION	

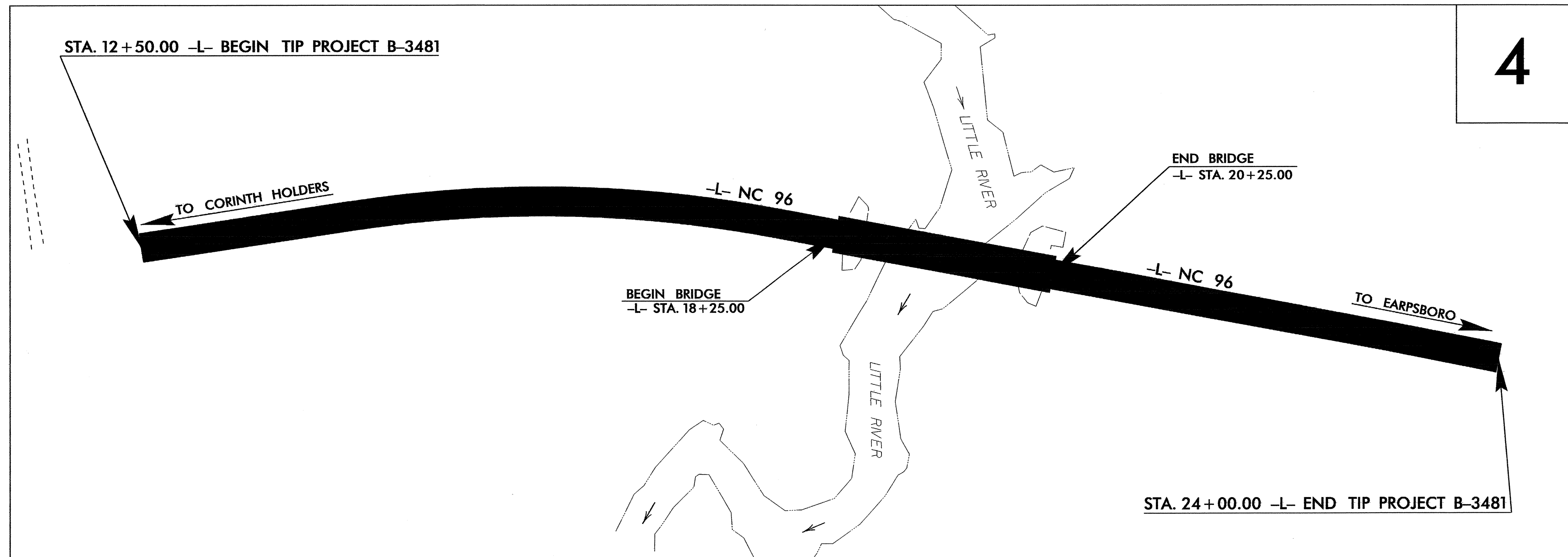
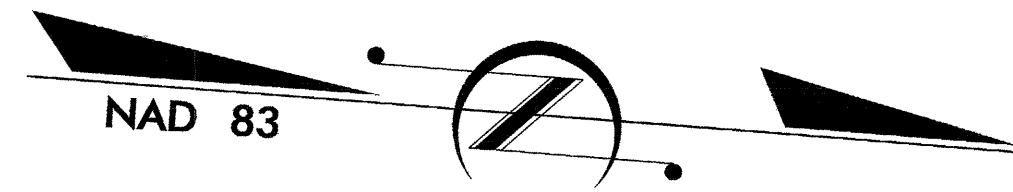
TIP PROJECT: B-3481

STATE OF NORTH CAROLINA
DIVISION OF HIGHWAYS

**PLAN FOR PROPOSED
HIGHWAY EROSION CONTROL**

JOHNSTON COUNTY

**LOCATION: BRIDGE NO. 94 OVER LITTLE RIVER ON NC 96
TYPE OF WORK: GRADING, DRAINAGE, PAVING, STRUCTURE,
AND GUARDRAIL**



EROSION AND SEDIMENT CONTROL MEASURES

Std. #	Description	Symbol
	Streambank Reforestation.....	
1630.03	Temporary Silt Ditch.....	
1630.05	Temporary Diversion.....	
1605.01	Temporary Silt Fence.....	
1606.01	Special Sediment Control Fence.....	
1622.01	Temporary Berms and Slope Drains.....	
1630.01	Riser Basin.....	
1630.02	Silt Basin Type B.....	
1633.01	Temporary Rock Silt Check Type-A.....	
	Temporary Rock Silt Check Type-B.....	
1634.01	Temporary Rock Sediment Dam Type-A.....	
1634.02	Temporary Rock Sediment Dam Type-B.....	
1635.01	Rock Pipe Inlet Sediment Trap Type-A.....	
1635.02	Rock Pipe Inlet Sediment Trap Type-B.....	
1630.04	Stilling Basin.....	
	Rock Inlet Sediment Trap:	
1632.01	Type A.....	
1632.02	Type B.....	
1632.03	Type C.....	
	Skimmer Basin.....	
	Tiered Skimmer Basin.....	

**THIS PROJECT CONTAINS
EROSION CONTROL PLANS
FOR CLEARING AND
GRUBBING PHASE OF
CONSTRUCTION.**

**THIS PROJECT HAS
BEEN DESIGNED TO
SENSITIVE WATERSHED
STANDARDS.**

**ENVIRONMENTALLY
SENSITIVE AREA(S) EXIST
ON THIS PROJECT**
*Refer To E. C. Special Provisions
for Special Considerations.*

GRAPHIC SCALE

0

PLANS

0

PROFILE (HORIZONTAL)

0

PROFILE (VERTICAL)

ROADSIDE ENVIRONMENTAL UNIT
DIVISION OF HIGHWAYS
STATE OF NORTH CAROLINA

Prepared In the Office of:
ROADSIDE ENVIRONMENTAL UNIT
1 South Wilmington St.
Raleigh, NC 27611
2006 STANDARD SPECIFICATIONS

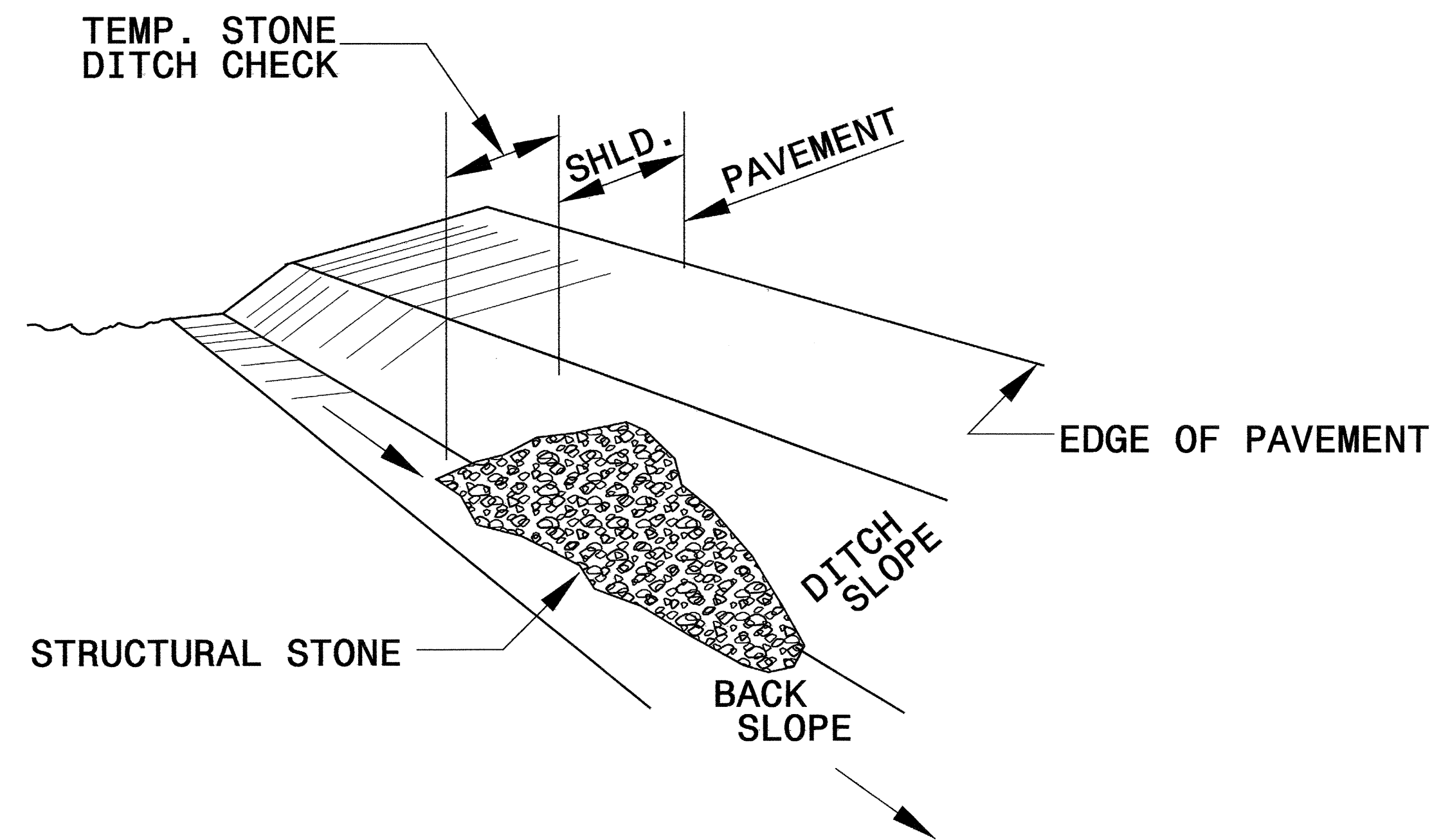
Roadway Standard Drawings

The following roadway english standards as appear in "Roadway Standard Drawings"- Roadway Design Unit - N. C. Department of Transportation - Raleigh, N. C., dated July 18, 2006 and the latest revision thereto are applicable to this project and by reference hereby are considered a part of these plans.

1605.01 Temporary Silt Fence	1630.05 Temporary Diversion
1606.01 Special Sediment Control Fence	1630.06 Special Stilling Basin
1607.01 Gravel Construction Entrance	1632.03 Rock Inlet Sediment Trap Type C
1622.01 Temporary Berms and Slope Drains	1633.01 Temporary Rock Silt Check Type A
1630.03 Temporary Silt Ditch	

PROJECT REFERENCE NO. B-3481	SHEET NO. EC-2
RW SHEET NO.	
ROADWAY DESIGN ENGINEER	HYDRAULICS ENGINEER

TEMPORARY ROCK SILT CHECK TYPE 'B' DETAIL

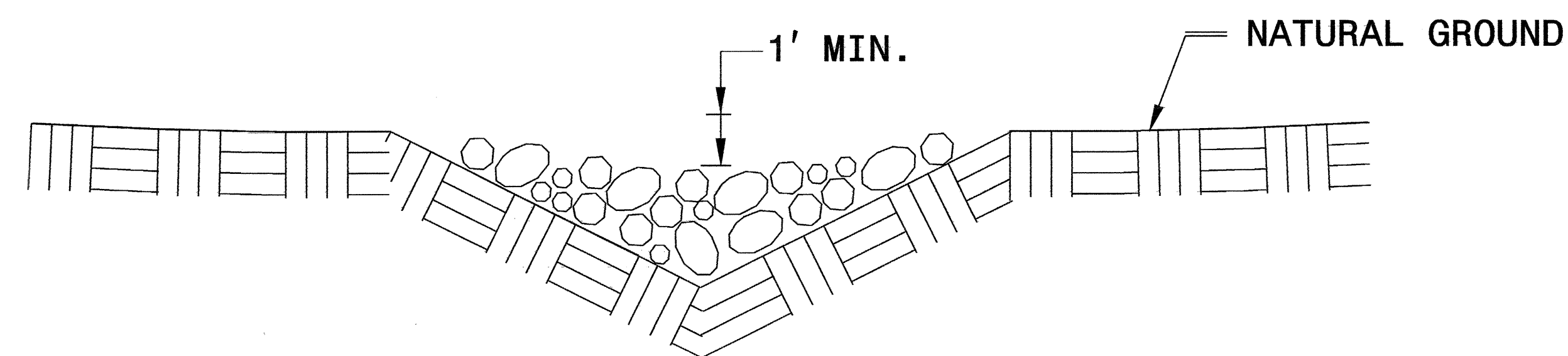


ISOMETRIC VIEW

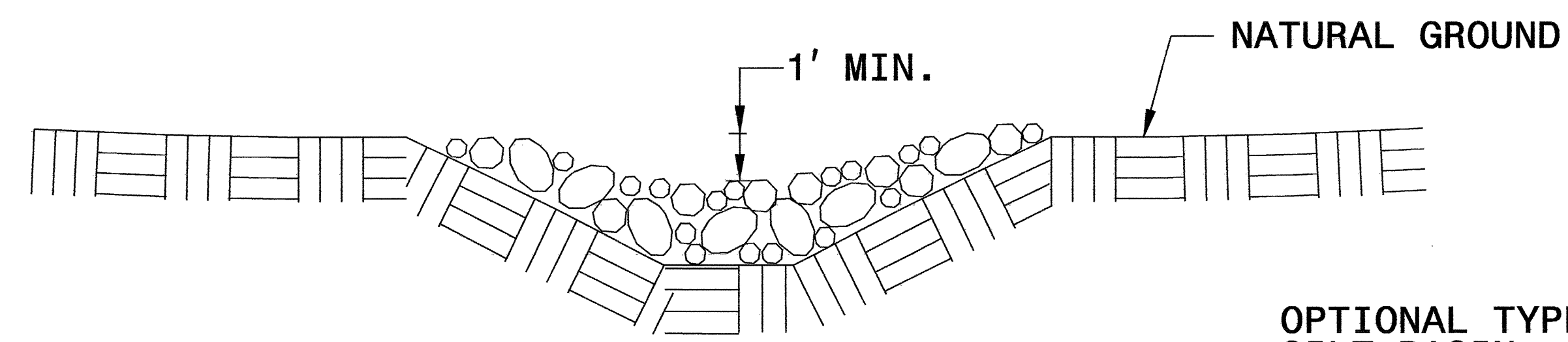
NOTES:

USE CLASS 'B' EROSION CONTROL STONE FOR STRUCTURAL STONE.

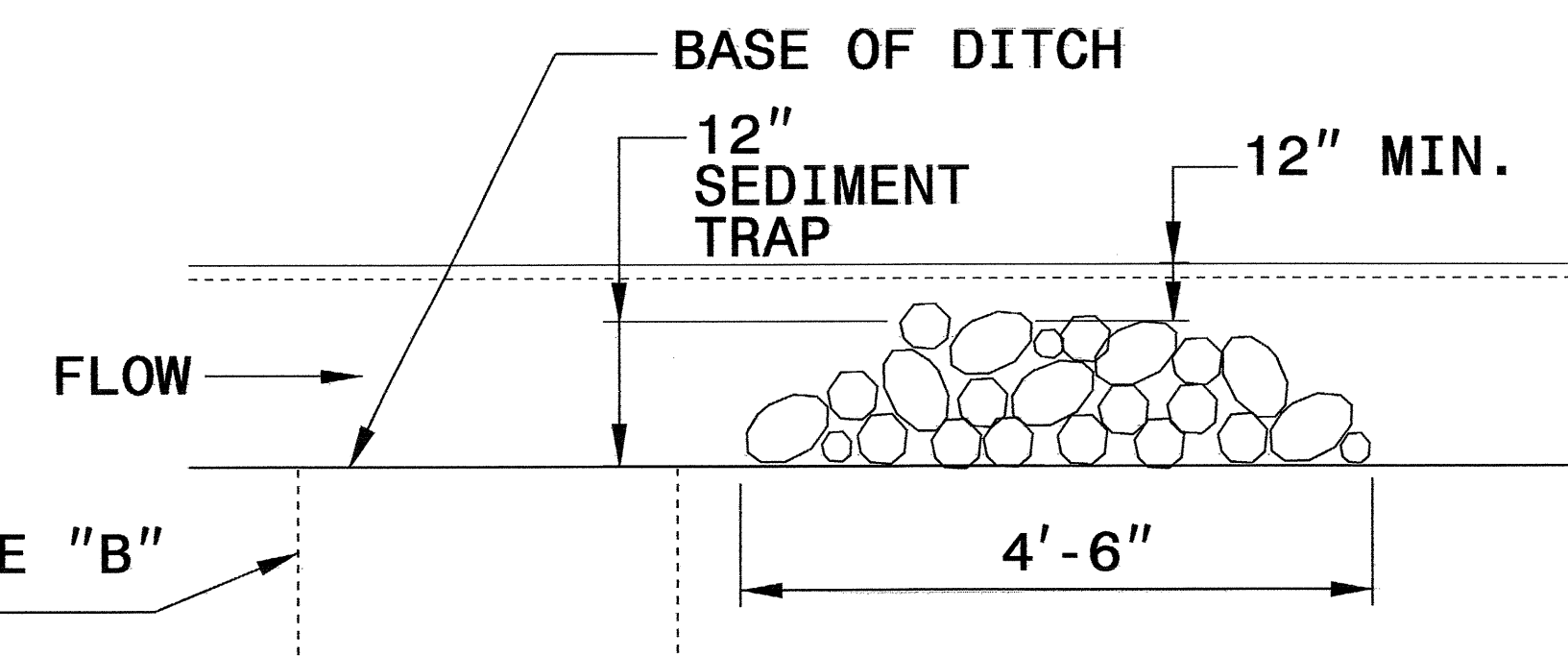
THE ENGINEER MAY DIRECT THE OPTION OF CLASS "A" STONE FOR SITES HAVING LESS THAN ONE (1) ACRE DRAINAGE AREA AND A DITCH GRADE LESS THAN 3%.



**CROSS SECTION
VEE DITCH**



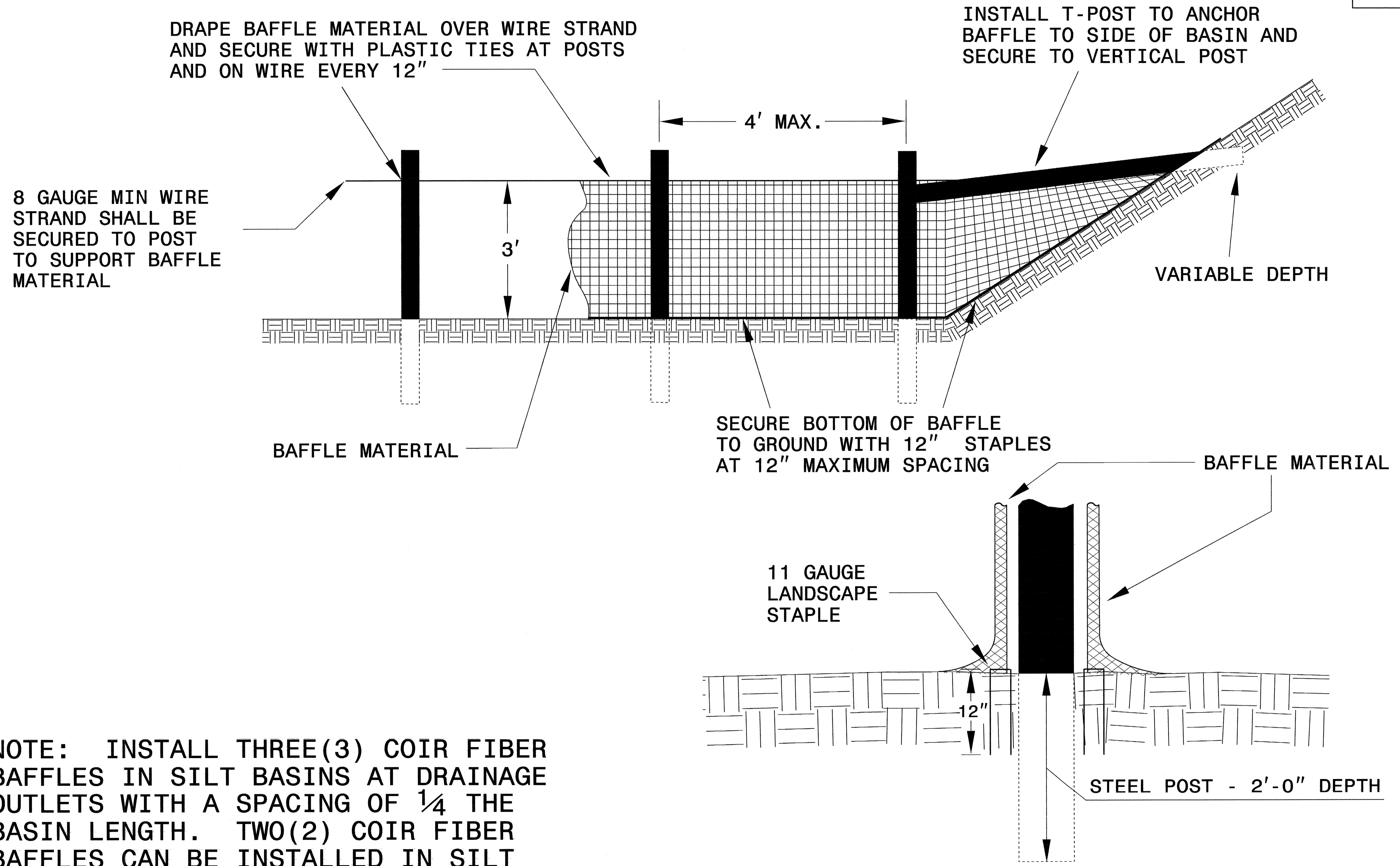
**CROSS SECTION
TRAPEZOIDAL DITCH**



ELEVATION VIEW

PROJECT REFERENCE NO. B-3481	SHEET NO. EC-2A
RW SHEET NO.	
ROADWAY DESIGN ENGINEER	HYDRAULICS ENGINEER

COIR FIBER BAFFLE DETAIL

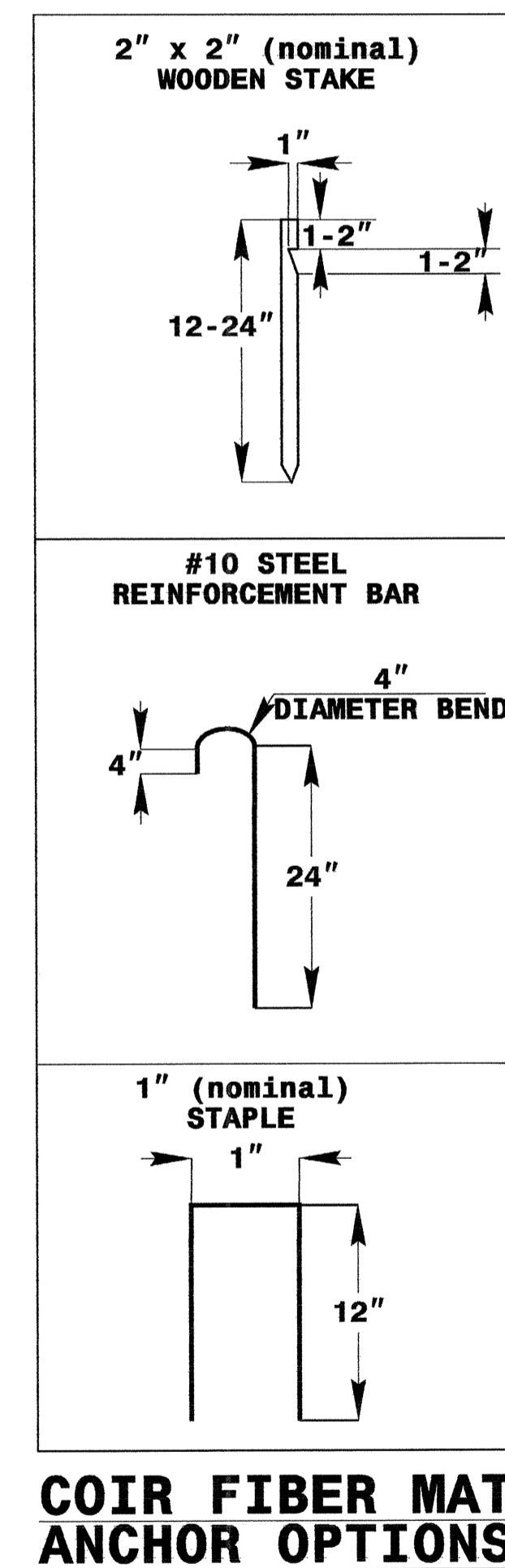
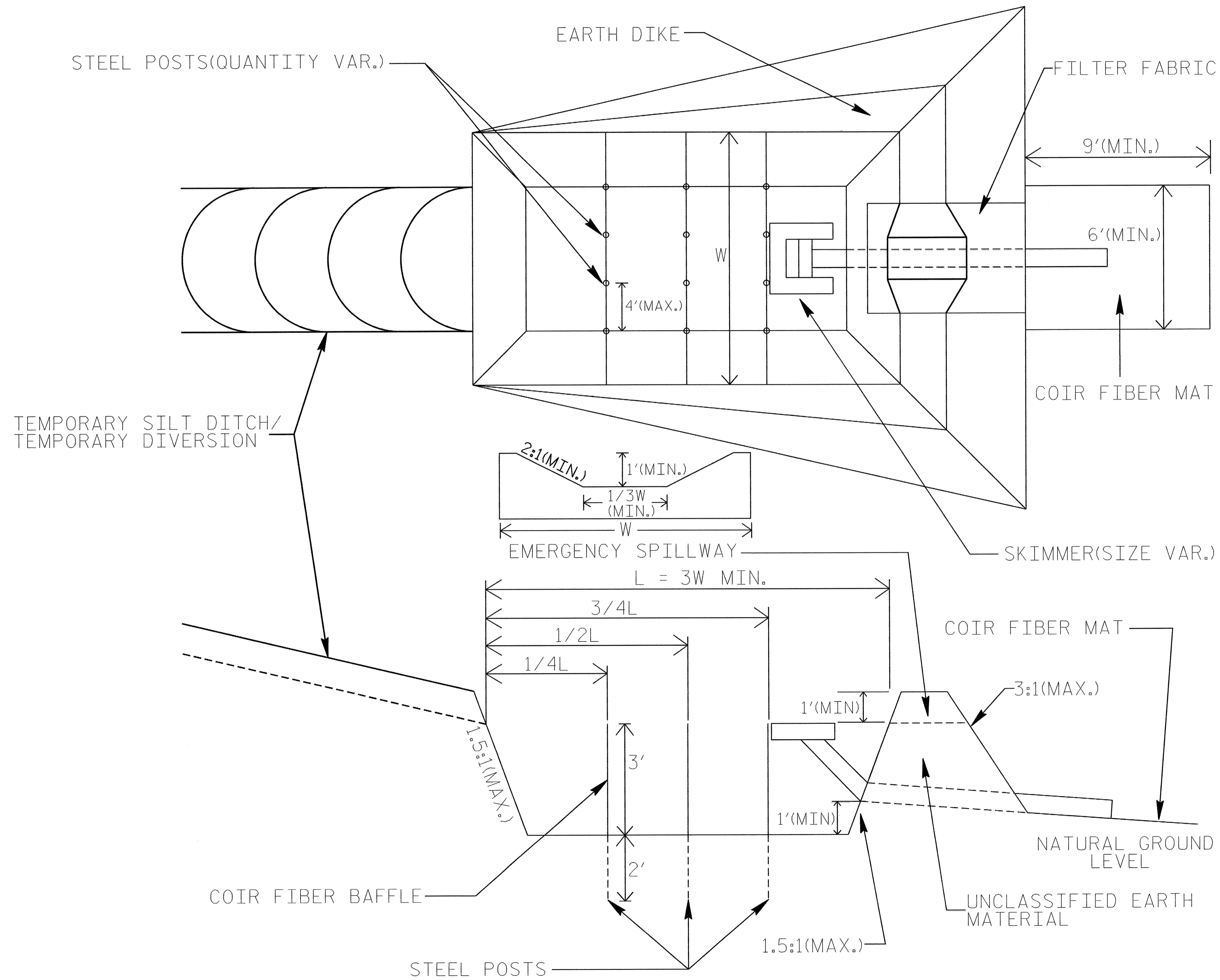


NOTE: INSTALL THREE(3) COIR FIBER BAFFLES IN SILT BASINS AT DRAINAGE OUTLETS WITH A SPACING OF $\frac{1}{4}$ THE BASIN LENGTH. TWO(2) COIR FIBER BAFFLES CAN BE INSTALLED IN SILT BASINS LESS THAN 20 FT. IN LENGTH WITH A SPACING OF $\frac{1}{3}$ THE BASIN LENGTH.

BAFFLE MATERIAL SHALL BE SECURED TO THE BOTTOM AND SIDES OF BASIN USING 12" LANDSCAPE STAPLES

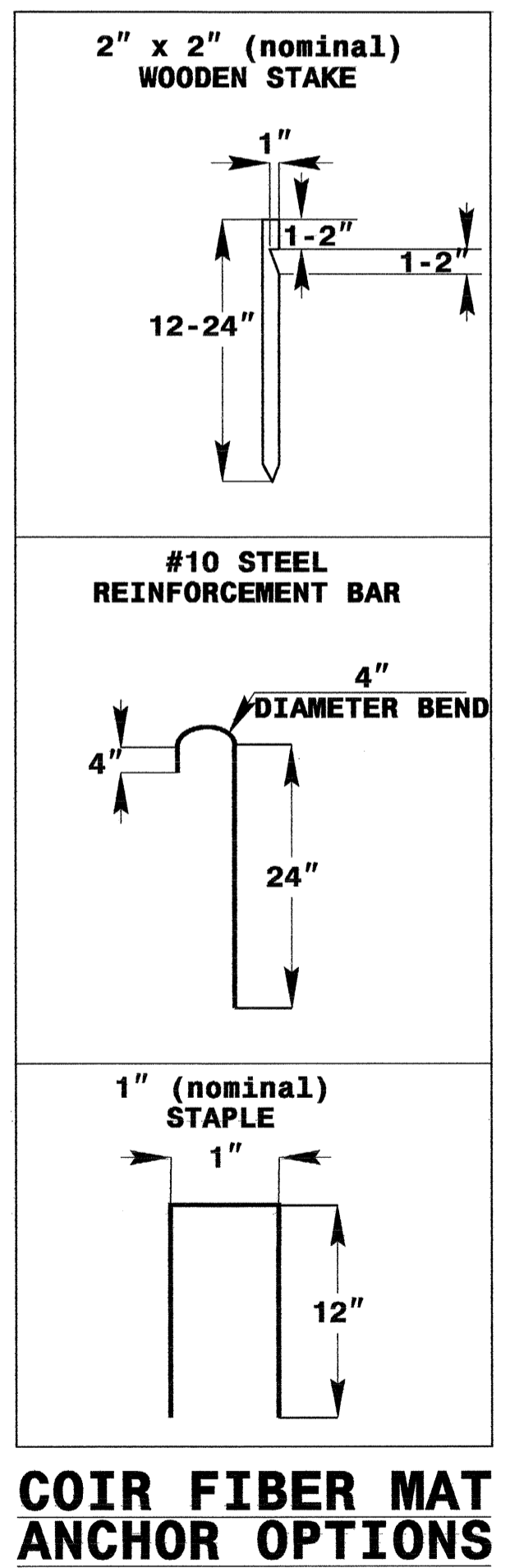
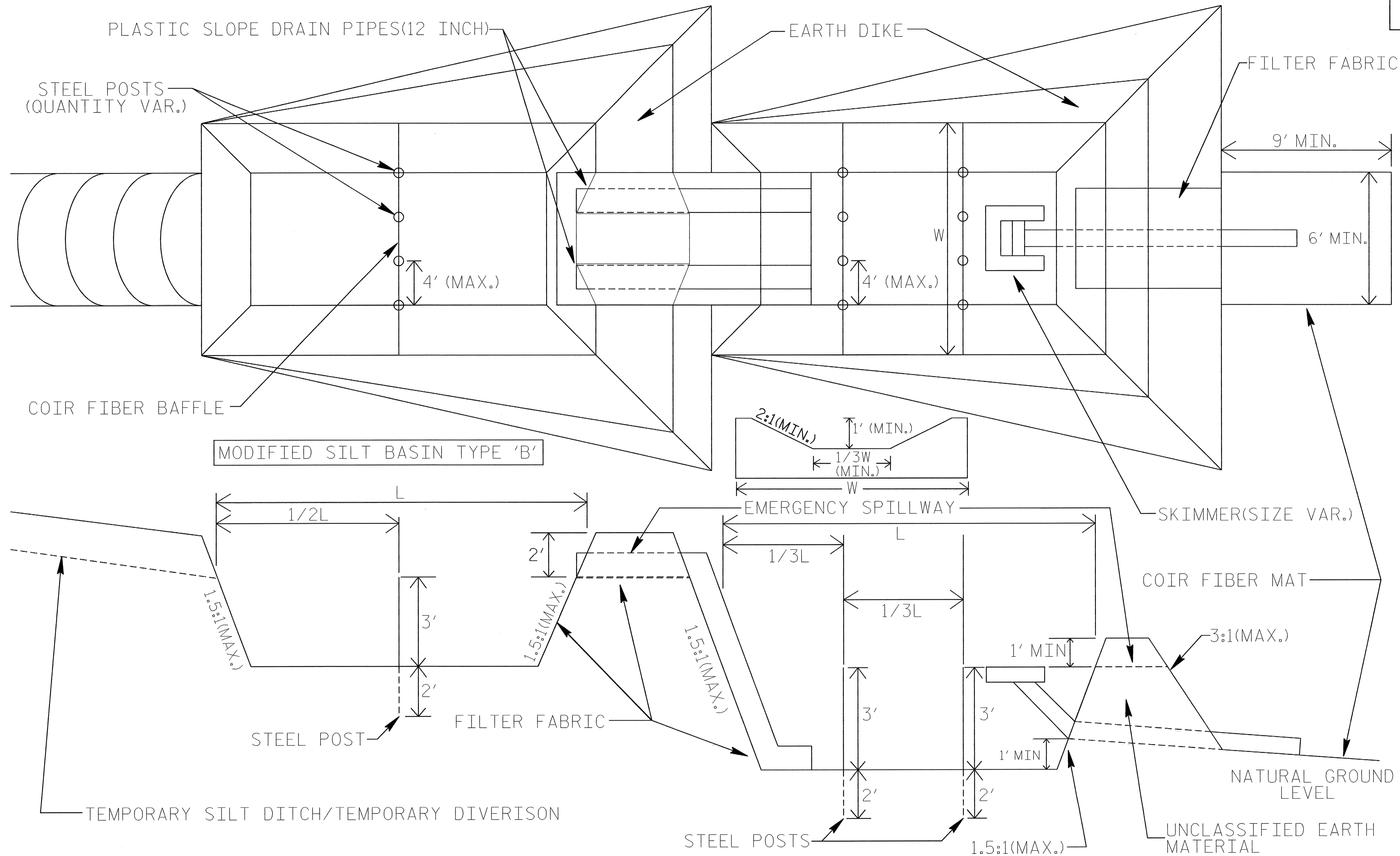
SKIMMER BASIN WITH BAFFLES DETAIL

PROJECT REFERENCE NO. B-3481	SHEET NO. EC-2B
RW SHEET NO.	
ROADWAY DESIGN ENGINEER	HYDRAULICS ENGINEER



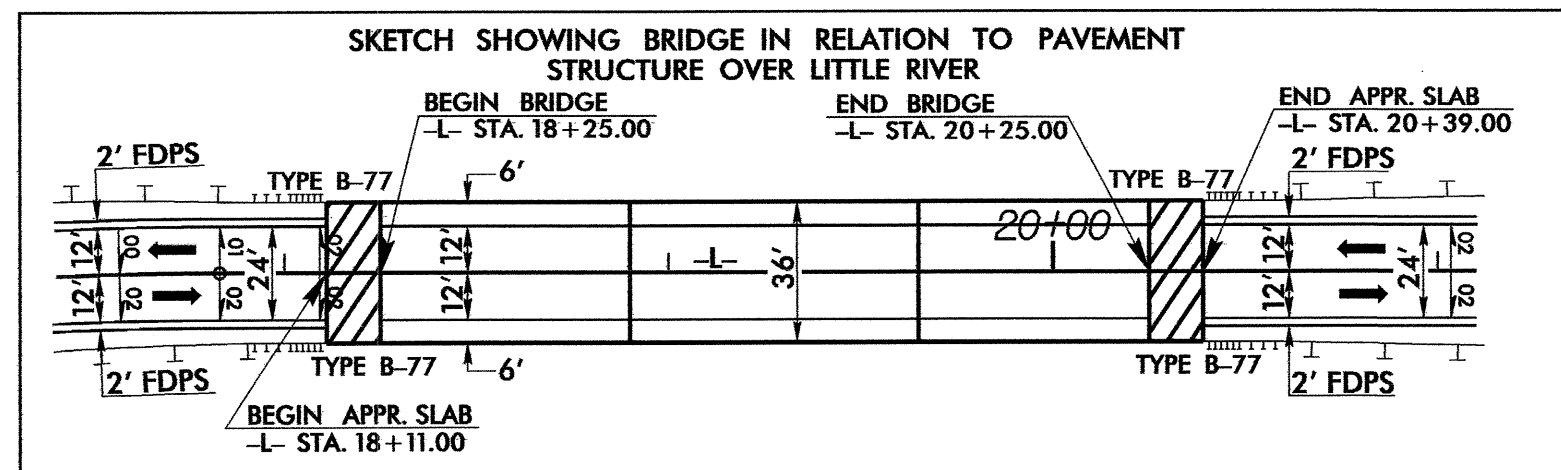
TIERED SKIMMER BASIN DETAIL

PROJECT REFERENCE NO. B-3481		SHEET NO. EC-2C	
RW SHEET NO.		HYDRAULICS ENGINEER	
ROADWAY DESIGN ENGINEER		HYDRAULICS ENGINEER	



NOTE
ADDITIONAL MODIFIED SILT BASINS TYPE 'B' MAY BE NEEDED DEPENDING ON SLOPE.

PROJECT REFERENCE NO.	SHEET NO.
B-3481	EC-4/CONST.4
RW SHEET NO.	
ROADWAY DESIGN ENGINEER	HYDRAULICS ENGINEER



NOTE: BRIDGE HAS BEEN WIDENED TO ACCOMMODATE HYDRAULIC DESIGN SPREAD.

**20 x 13 x 3
2.0 inch Skimmer
with 1.25 inch
Orifice Diameter
4 ft. weir
(See Tiered Skimmer
Basin Detail)
ID 4.6C**

NOTE: UTILIZE SPECIAL STILLING BASIN AND/OR SKIMMER BASIN AS STILLING BASIN WHERE APPLICABLE.

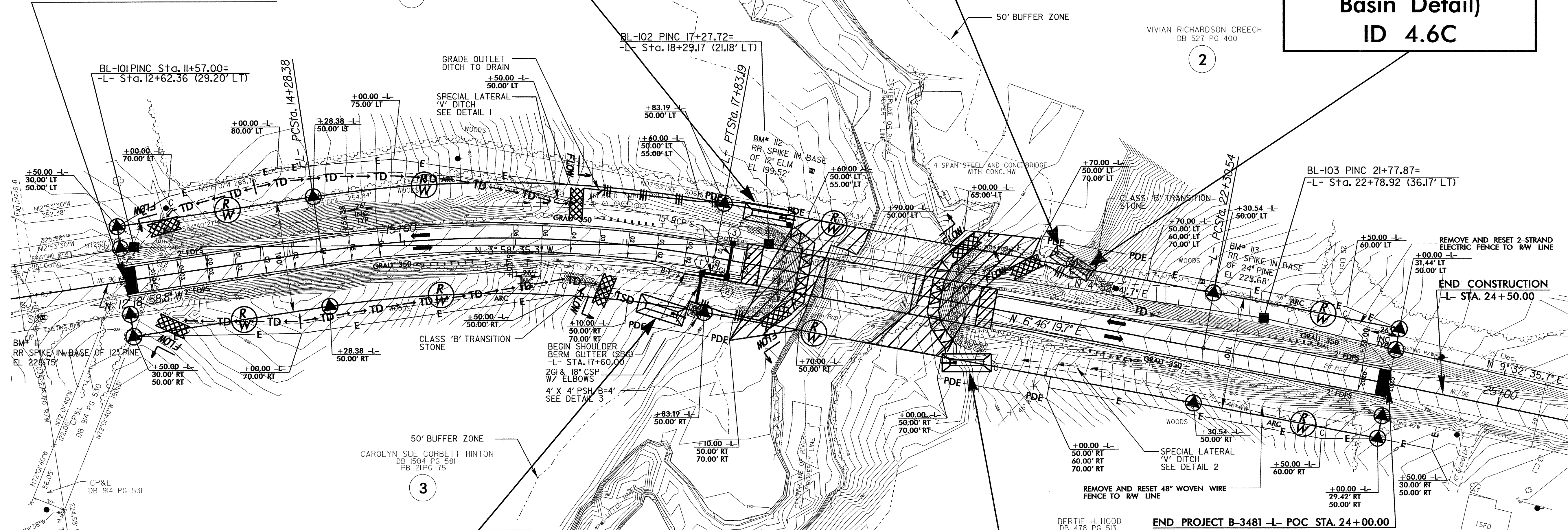
**Modified Silt Basin
Type 'B'
20 x 13 x 3
(See Tiered Skimmer
Basin Detail)
ID 4.6C**

**45 x 15 x 3
2.0 inch Skimmer
with 1.5 inch
Orifice Diameter
6 ft. weir
ID 4.4C**

**43 x 17 x 3
2.0 inch Skimmer
with 1.5 inch
Orifice Diameter
6 ft. weir
ID 4.2C**


**44 x 16 x 3
2.0 inch Skimmer
with 1.5 inch
Orifice Diameter
6 ft. weir
ID 4.5C**

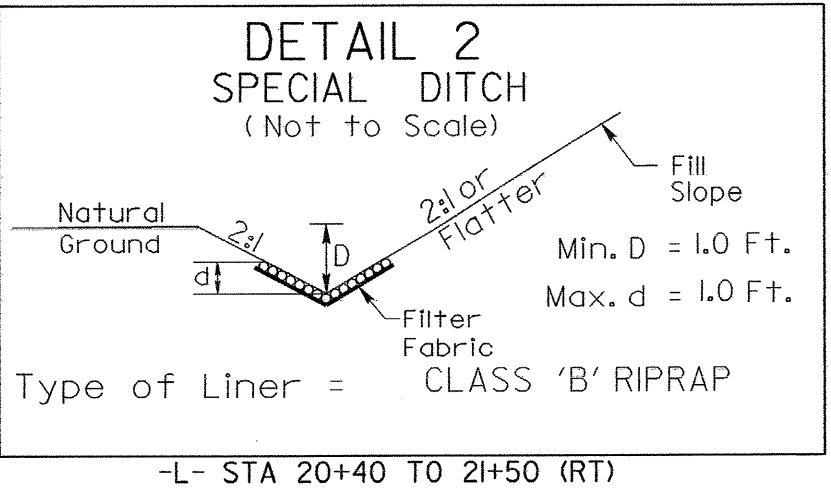
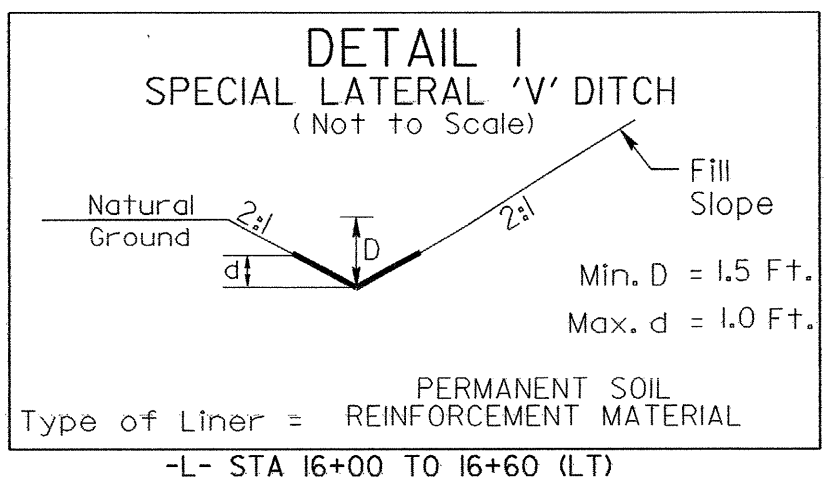
BEGIN PROJECT B-3481 -L- POT STA. 12+50.00



CLEARING AND GRUBBING EROSION CONTROL FOR CONSTRUCTION SHEET 4

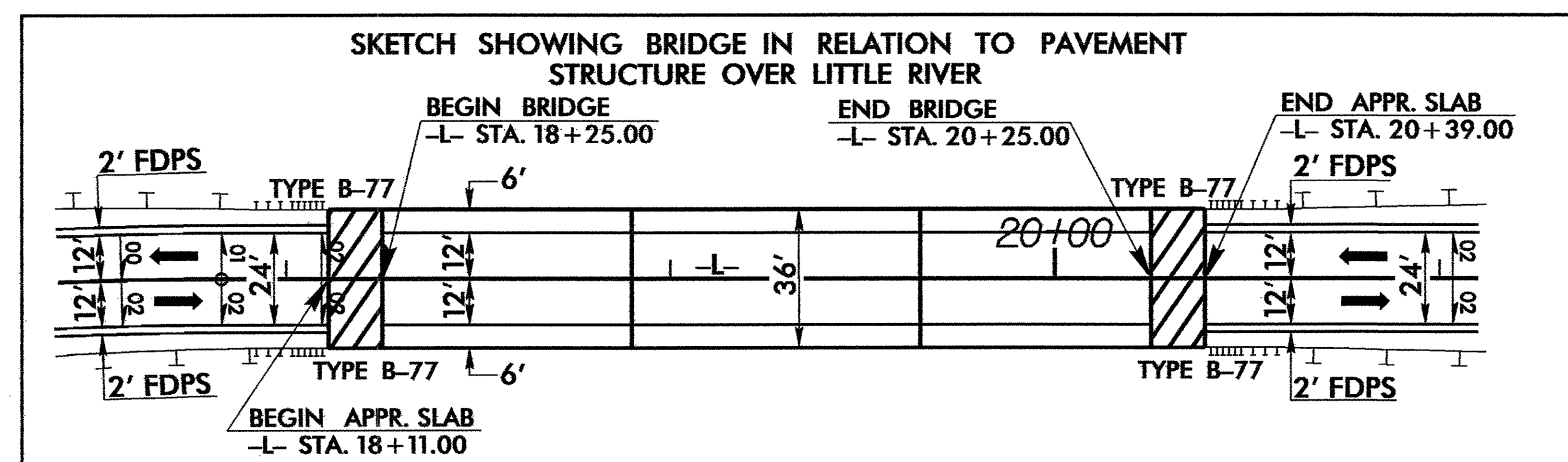
NOTE: PLACE TEMPORARY ROCK SEDIMENT DAMS TYPE - B AND TEMPORARY ROCK SILT CHECKS TYPE - A AT DRAINAGE OUTLETS.

 ENVIRONMENTALLY SENSITIVE AREA SEE PROJECT SPECIAL PROVISIONS



SEE SHEET 5 FOR -L- PROFILE
SEE SHEETS S-1 THRU S-__ FOR STRUCTURE PLANS

PROJECT REFERENCE NO.	SHEET NO.
B-3481	EC-5/CONST.4
RW SHEET NO.	
ROADWAY DESIGN ENGINEER	HYDRAULICS ENGINEER



NOTE: BRIDGE HAS BEEN WIDENED TO ACCOMMODATE HYDRAULIC DESIGN SPREAD.

20 x 13 x 3
2.0 inch Skimmer
with 1.25 inch
Orifice Diameter
4 ft. weir
(See Tiered Skimmer
Basin Detail)
ID 4.6C

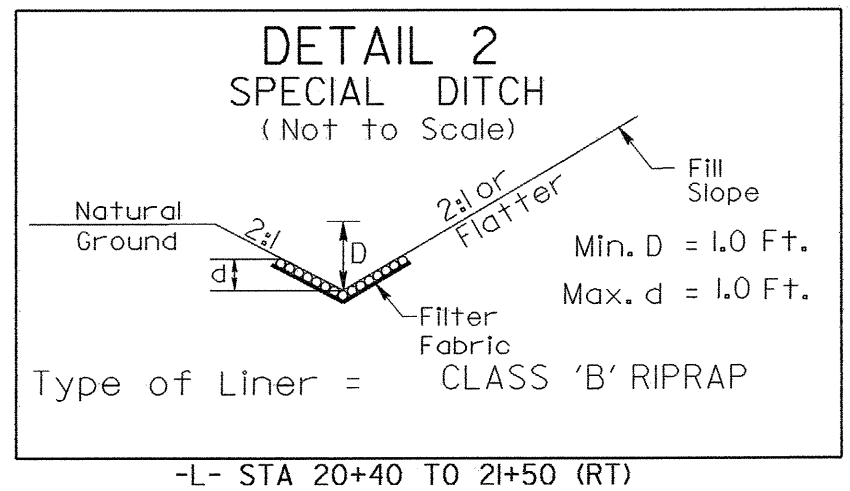
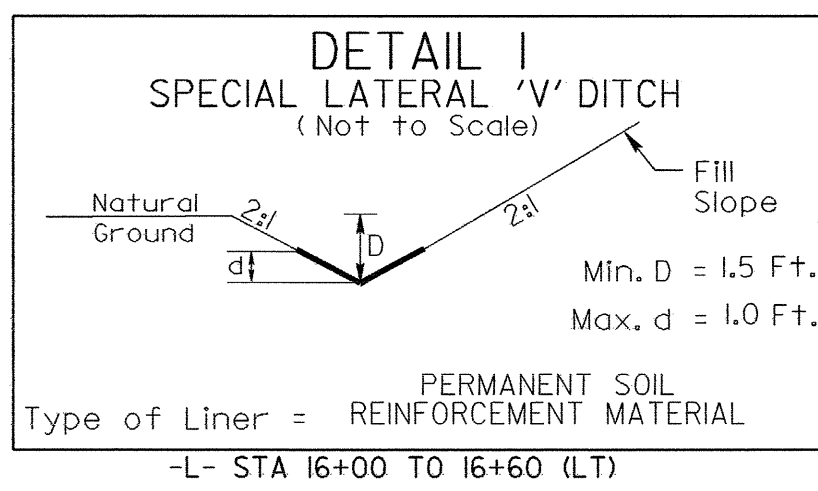
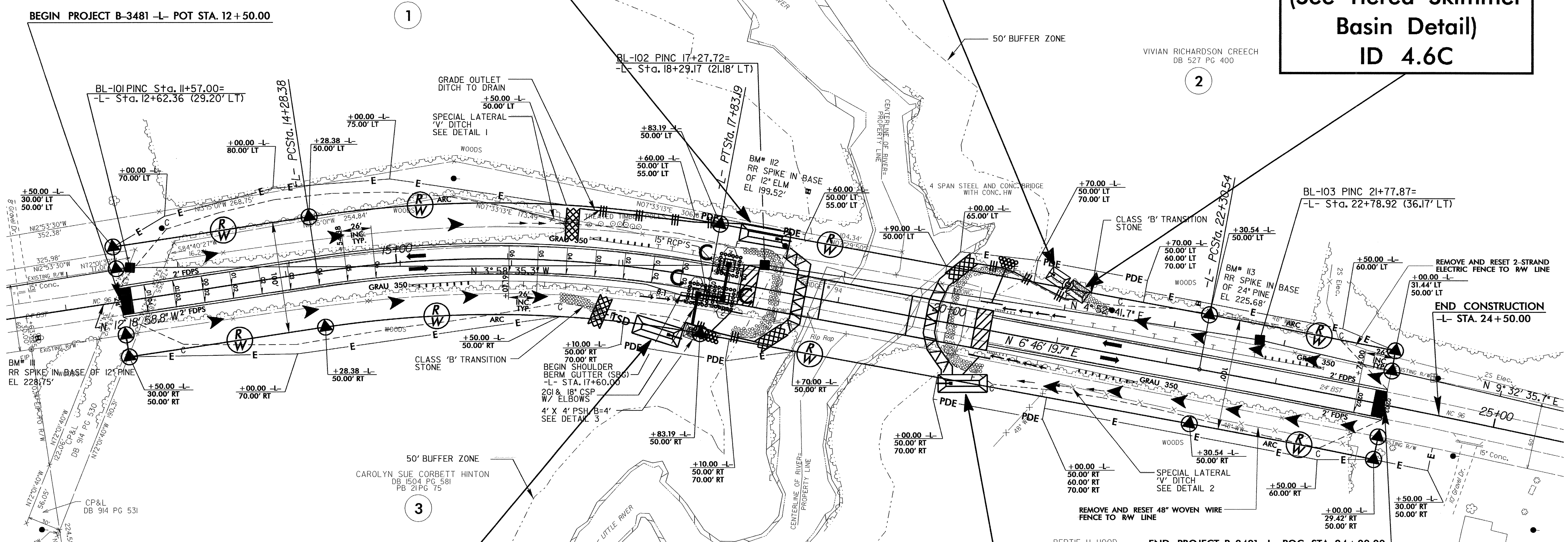
NOTE: UTILIZE SPECIAL STILLING BASIN AND/OR SKIMMER BASIN AS STILLING BASIN WHERE APPLICABLE.

Modified Silt Basin
Type 'B'
20 x 13 x 3
(See Tiered Skimmer
Basin Detail)
ID 4.6C

45 x 15 x 3
2.0 inch Skimmer
with 1.5 inch
Orifice Diameter
6 ft. weir
ID 4.4C

43 x 17 x 3
2.0 inch Skimmer
with 1.5 inch
Orifice Diameter
6 ft. weir
ID 4.2C

44 x 16 x 3
2.0 inch Skimmer
with 1.5 inch
Orifice Diameter
6 ft. weir
ID 4.5C



SEE SHEET 5 FOR -L- PROFILE
 SEE SHEETS S-1 THRU S-__ FOR STRUCTURE PLANS