

See Sheet 1-A For Index of Sheets  
See Sheet 1-B For Conventional Symbols

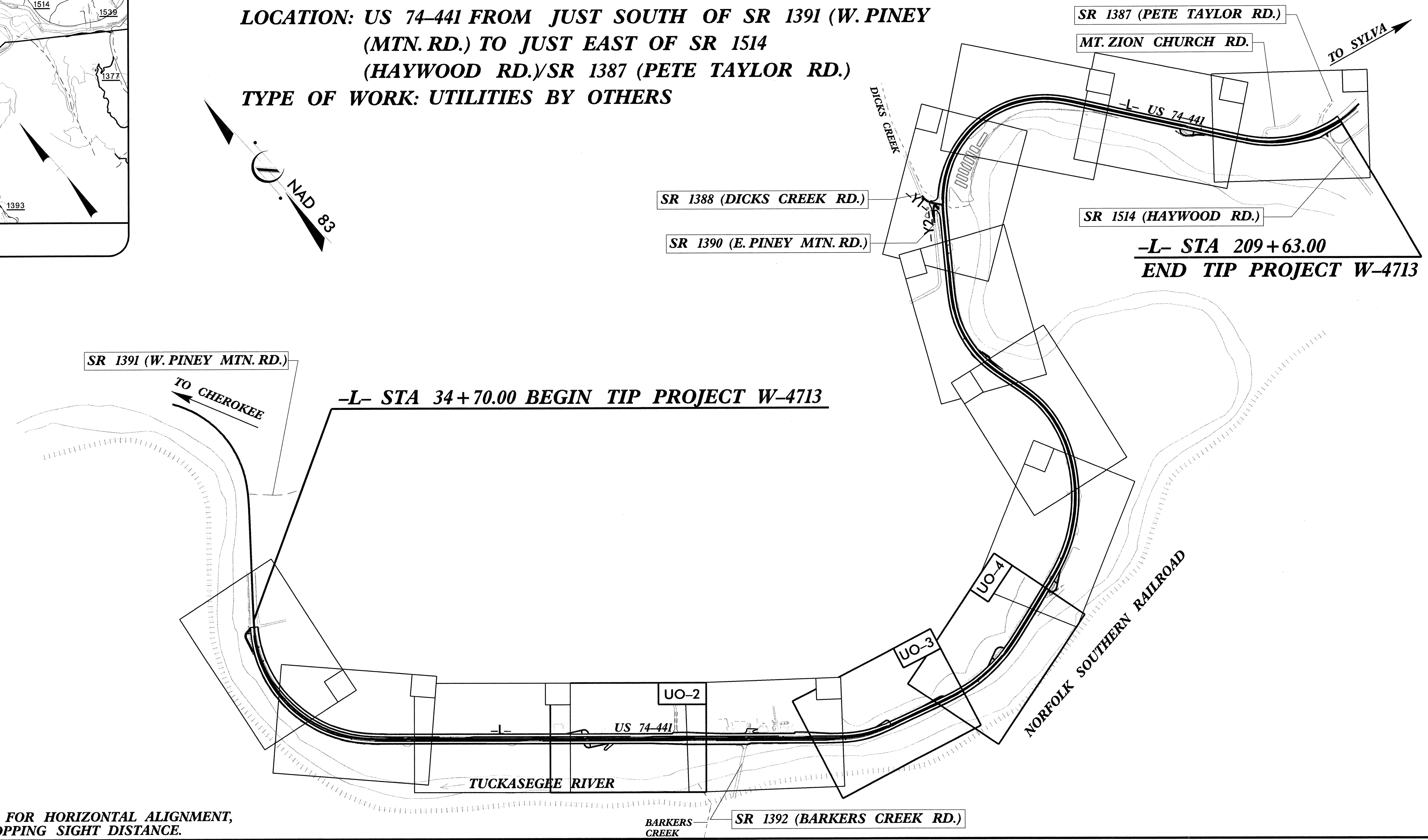
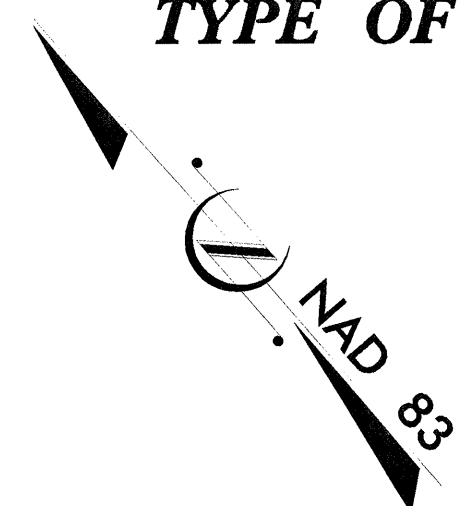
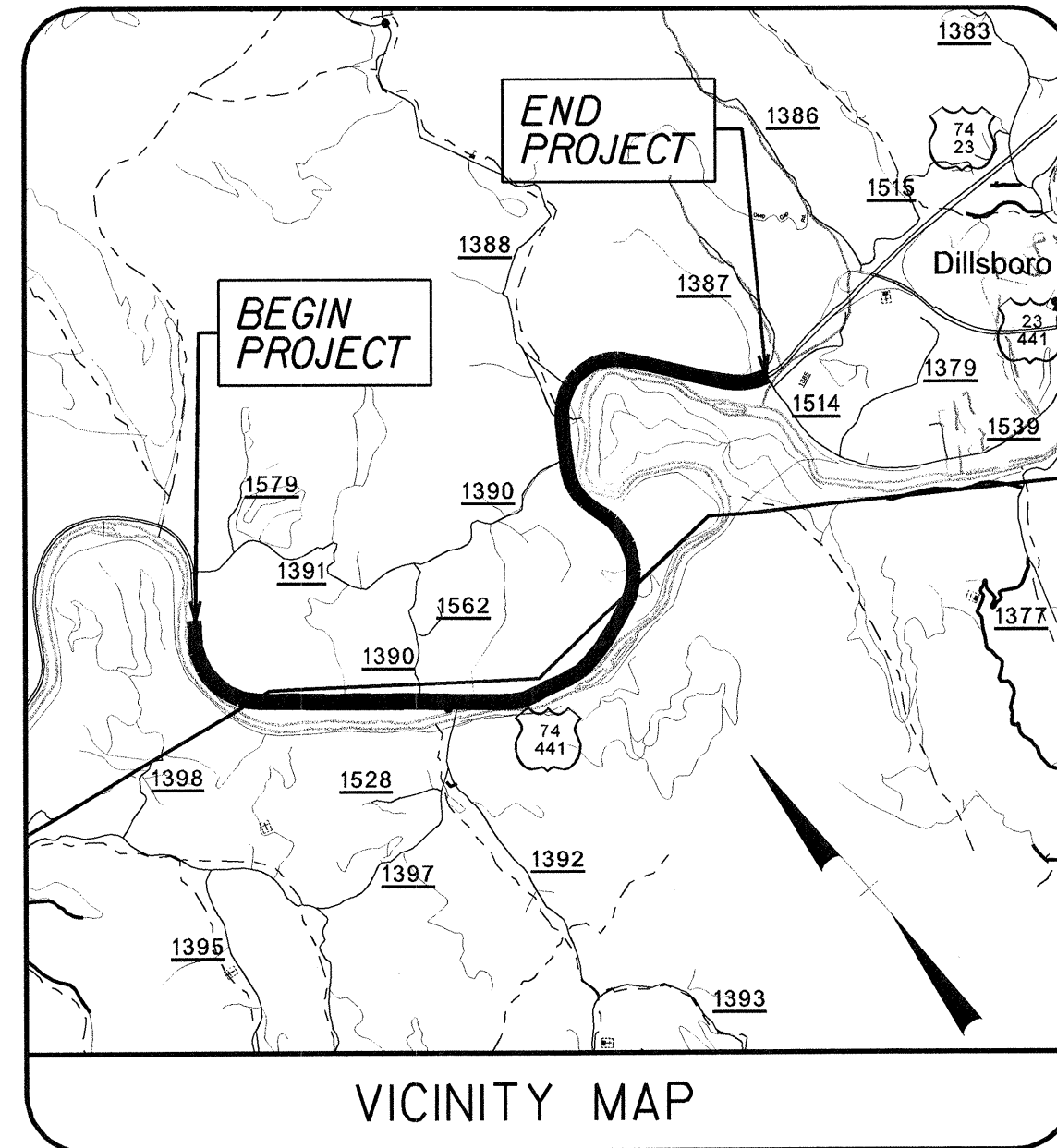
STATE OF NORTH CAROLINA  
DIVISION OF HIGHWAYS

**JACKSON COUNTY**

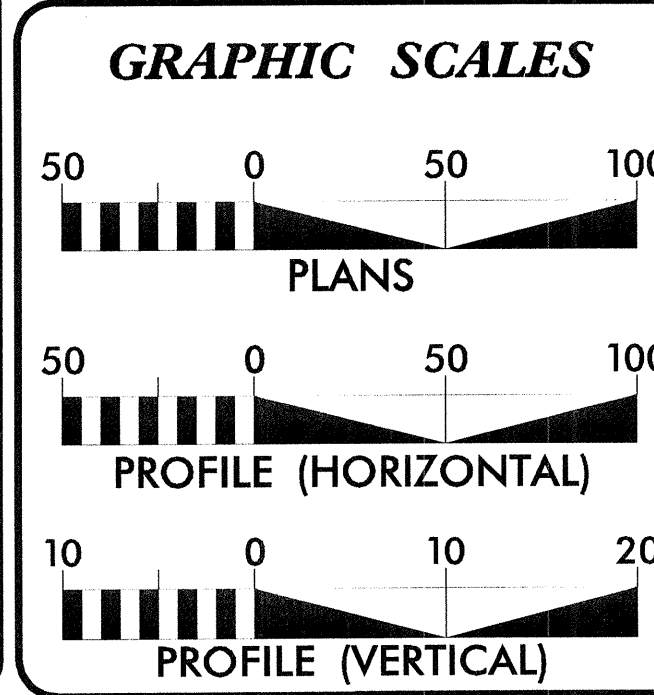
**LOCATION: US 74-441 FROM JUST SOUTH OF SR 1391 (W. PINEY  
(MTN. RD.) TO JUST EAST OF SR 1514  
(HAYWOOD RD.)/SR 1387 (PETE TAYLOR RD.)**  
**TYPE OF WORK: UTILITIES BY OTHERS**

STATE	STATE PROJECT REFERENCE NO.	SHEET NO.	TOTAL SHEETS
N.C.	W-4713	UO-1	
STATE PROJ. NO.	F.A. PROJ. NO.	DESCRIPTION	
37735.3.1		P.E.	

**CONTRACT: C201281 TIP PROJECT: W-4713**



DESIGN EXCEPTION REQUIRED FOR HORIZONTAL ALIGNMENT,  
VERTICAL ALIGNMENT, AND STOPPING SIGHT DISTANCE.



**DESIGN DATA**

ADT 2005 =	23,500
ADT 2025 =	35,000
DHV =	10 %
D =	60 %
T =	7 %
V =	60 MPH

**PROJECT LENGTH**

<b>Length Roadway</b>	
TIP Project W-4713 .....	3.313 Mi.
<b>Length Structure</b>	
TIP Project W-4713 .....	0.000 Mi.
<b>TOTAL LENGTH TIP</b>	
Project W-4713 .....	3.313 Mi.

**PLANS PREPARED BY :**  
RUMMEL, KLEPPER & KAHL, LLP  
consulting engineers  
900 RIDGEFIELD DRIVE, SUITE 350  
RALEIGH, NORTH CAROLINA 27609  
(919) 878-9560  
FOR

**DIVISION OF HIGHWAYS**

2006 STANDARD SPECIFICATIONS

**LETTING DATE:**  
MARCH 20, 2007

**B. Keith Skinner, P.E.**  
PROJECT ENGINEER

**Brandon J. McInnis, P.E.**  
PROJECT DESIGN ENGINEER

SIGNATURE: \_\_\_\_\_ P.E.

SIGNATURE: \_\_\_\_\_ P.E.

**DIVISION OF HIGHWAYS  
STATE OF NORTH CAROLINA**

STATE HIGHWAY DESIGN ENGINEER

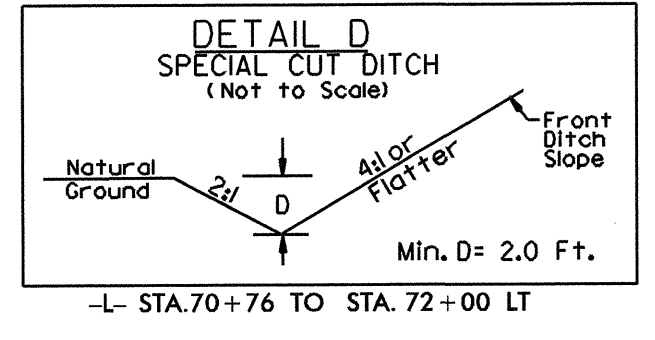
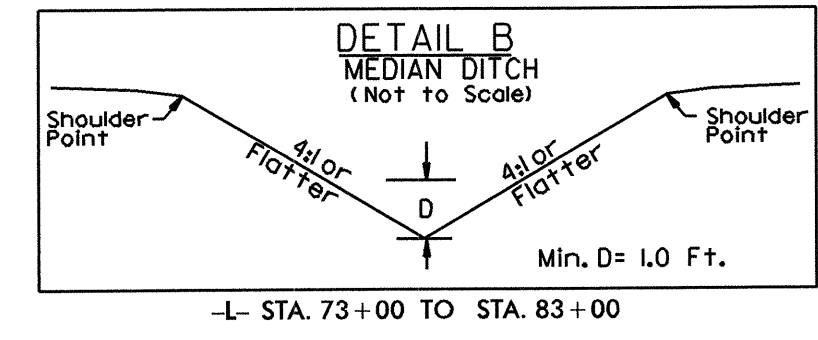
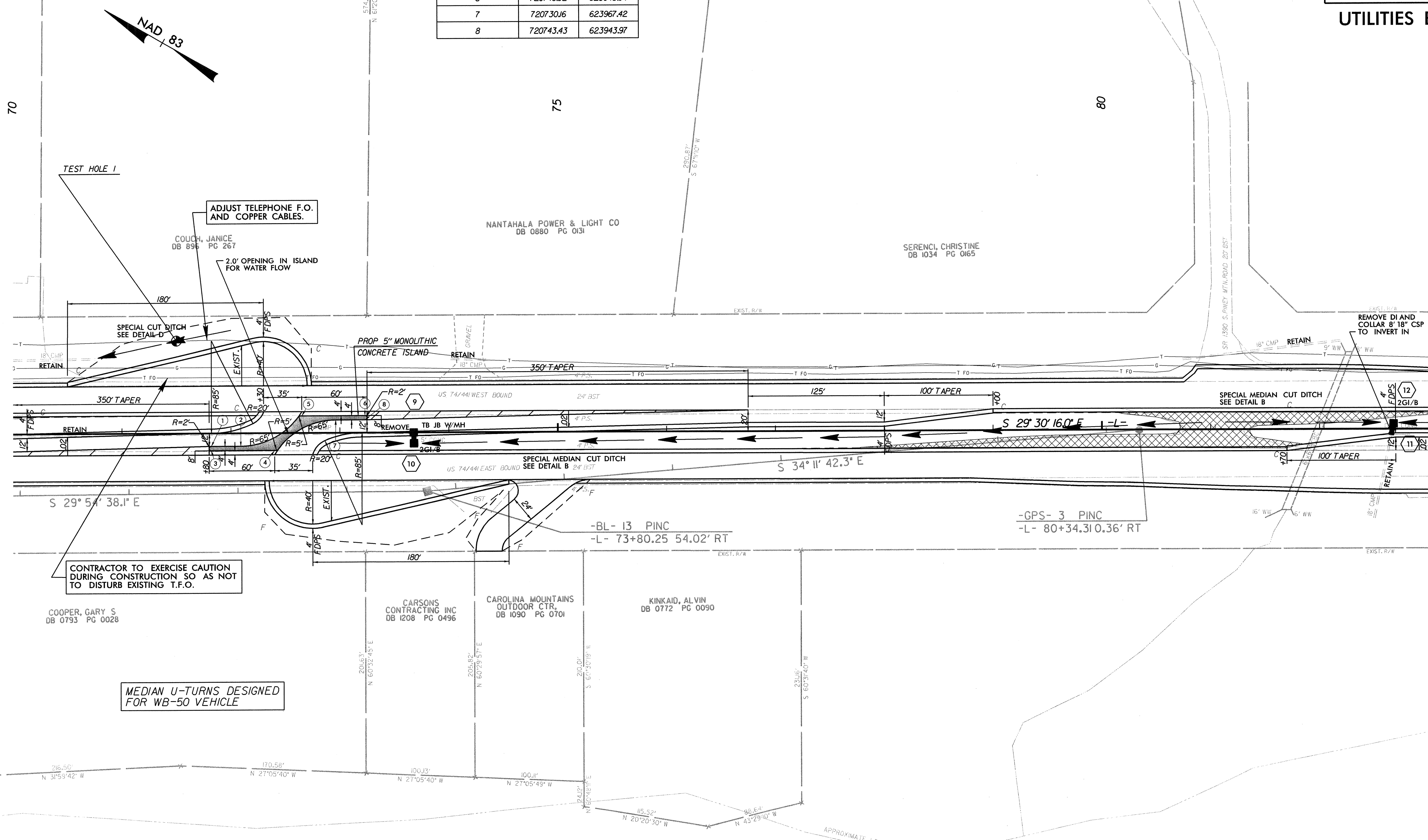
1/15/2006  
P:\Utilities\RD\UT\Proj\w-4713\rdg\1-sh.dgn  
cholder

PROJECT REFERENCE NO.	SHEET NO.
W-4713	U0-2
RW SHEET NO.	

UTILITIES BY OTHERS

TEST HOLE DATA #1		
UTILITY	1.5' T.F.O.	1.5' TELE (COPPER)
STATION	71+49.72/85.42' LT	71+49.96/85.33' LT
DEPTH	2.09'	2.26'
TOP ELEV.	1897.41'	1897.24'

CONCRETE ISLAND COORDINATES		
POINT NUMBER	NORTHING	EASTING
1	720653.11	624054.86
2	720666.38	624031.40
3	720649.62	624052.89
4	720666.38	624031.40
5	720718.33	623996.45
6	720746.92	623945.94
7	720730.16	623967.42
8	720743.43	623943.97



**PLANS PREPARED BY :**

**RUMMEL • KLEPPER & KAHL, LLP**  
consulting engineers  
900 RIDGEFIELD DRIVE SUITE 350  
RALEIGH, NORTH CAROLINA 27609-3960  
(919) 878-9560

FOR  
**DIVISION OF HIGHWAYS**

H:\E\00000\H:\E\00000\Drawings\Drawings\W-4713\util\_csh\_007.dgn  
 01/17/05



