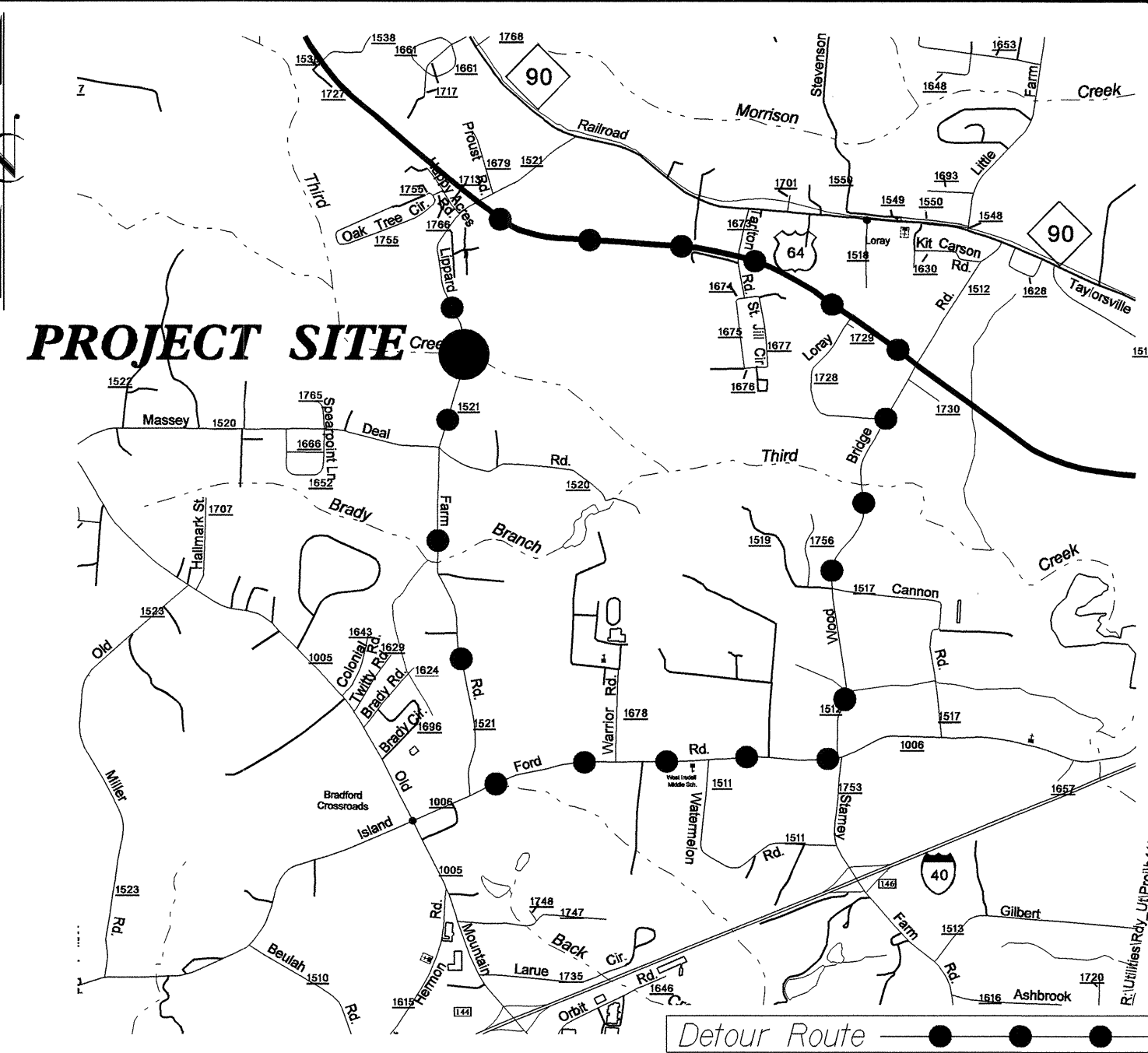


STATE OF NORTH CAROLINA
DIVISION OF HIGHWAYS

**UTILITY CONSTRUCTION PLANS
IREDELL COUNTY**

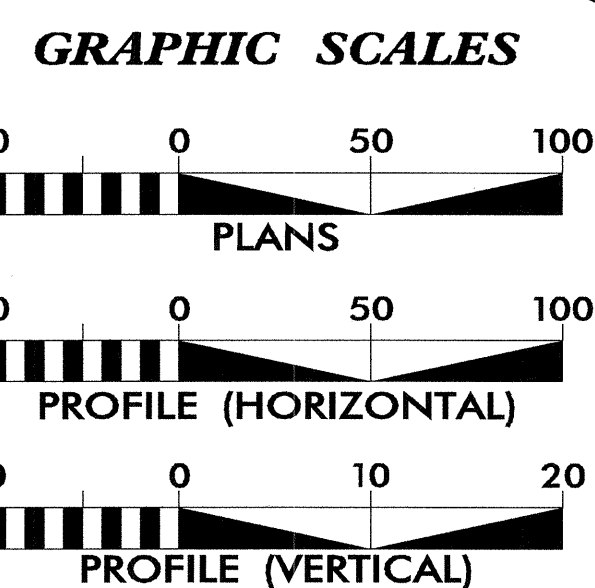
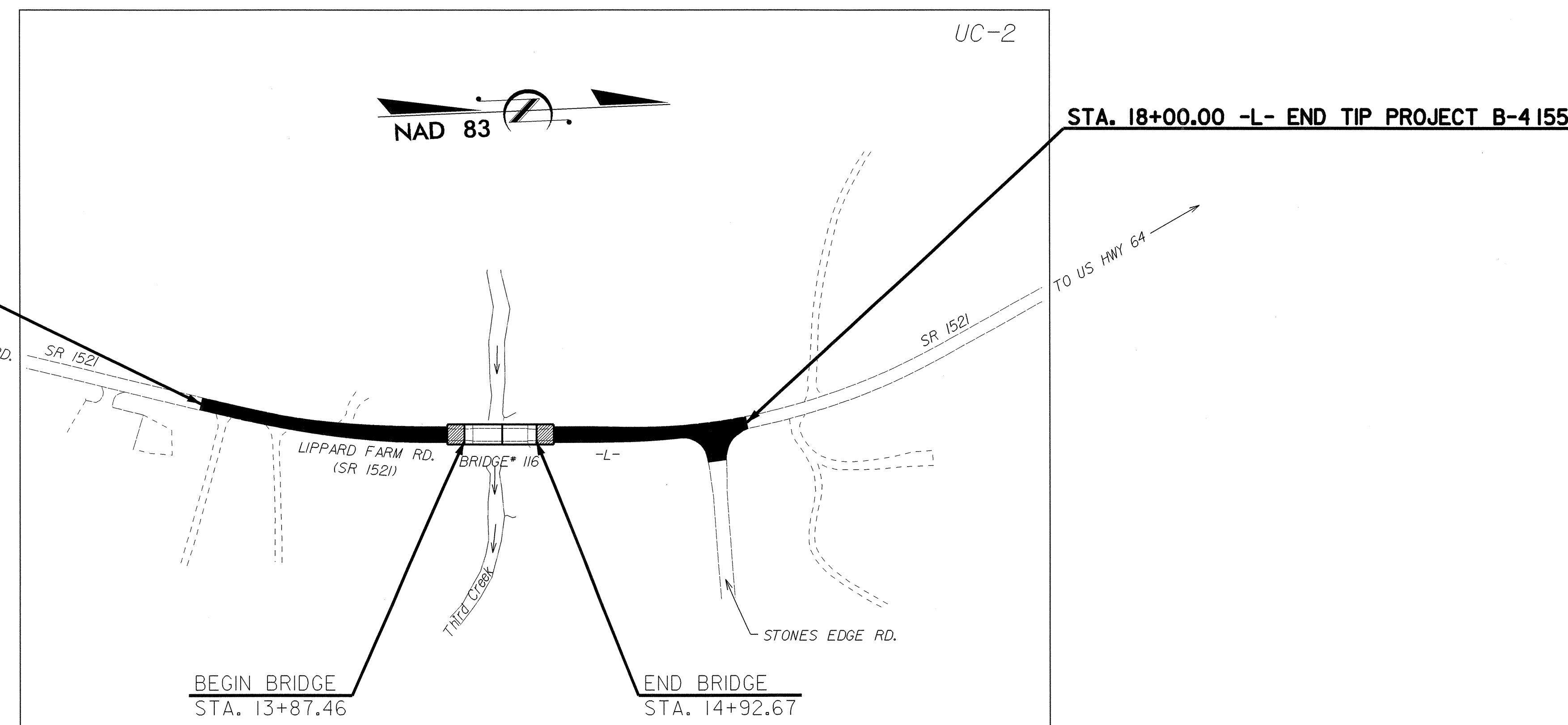
LOCATION: Bridge NO. 116 over Third Creek on SR 1521 (Lippard Farm Road)

TYPE OF WORK: UTILITIES



VICINITY MAP

STA. 10+00.00 -L- BEGIN TIP PROJECT B-4155



SHEET NO.	DESCRIPTION
UC-1	TITLE SHEET
UC-2	UTILITY CONSTRUCTION PLAN SHEET
UC-3	DETAILS SHEET

WATER OWNER ON PROJECT

(1) WEST IREDELL WATER CORPORATION

SEAL

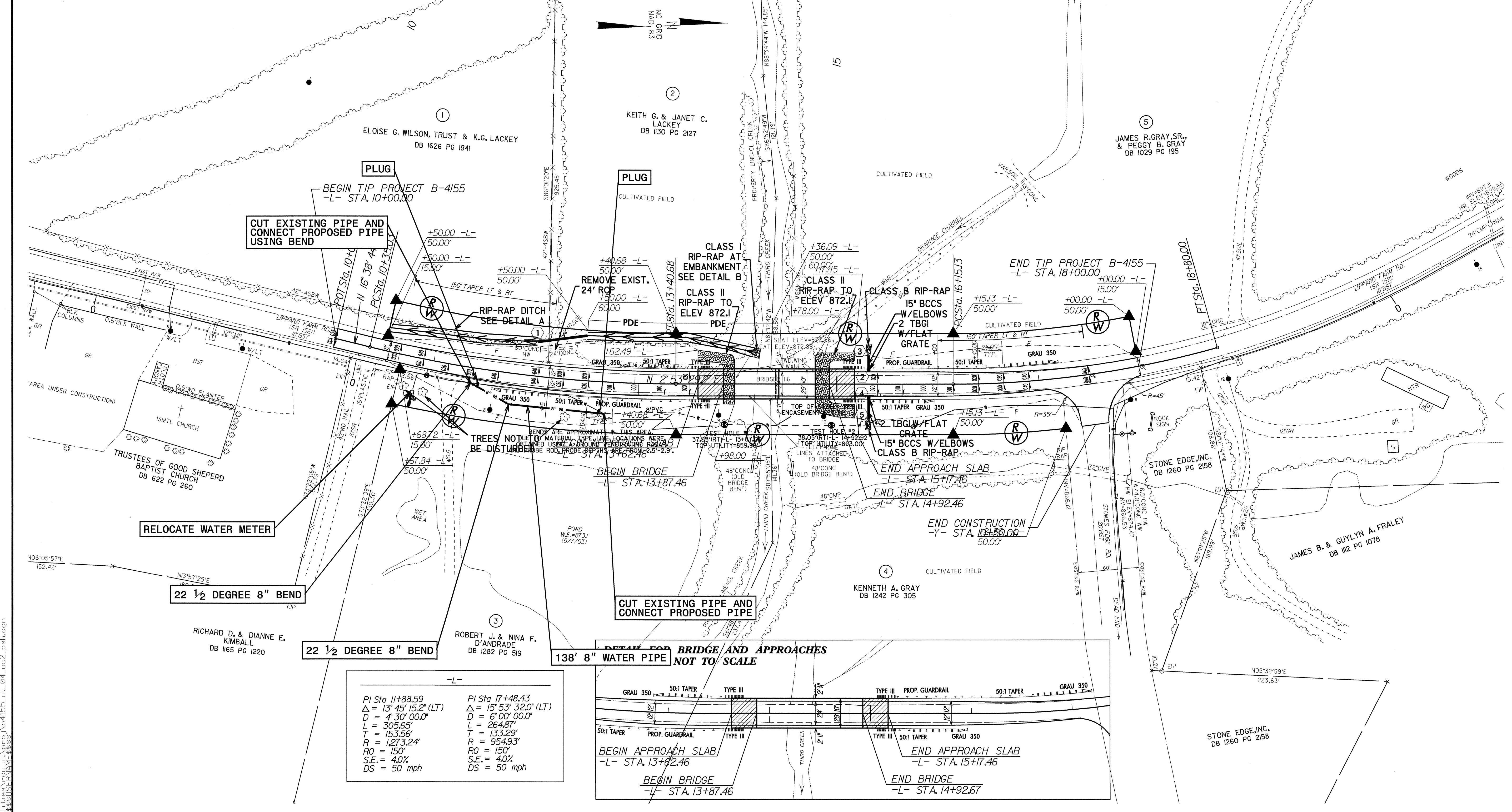
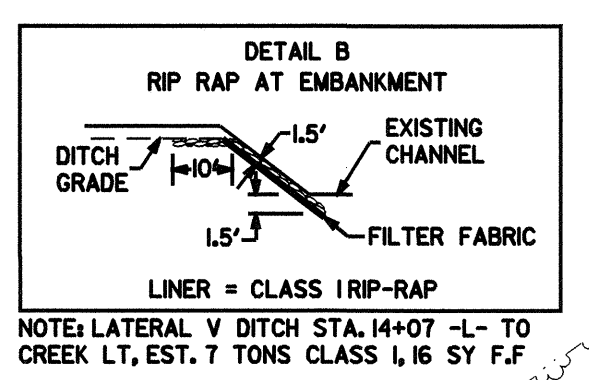
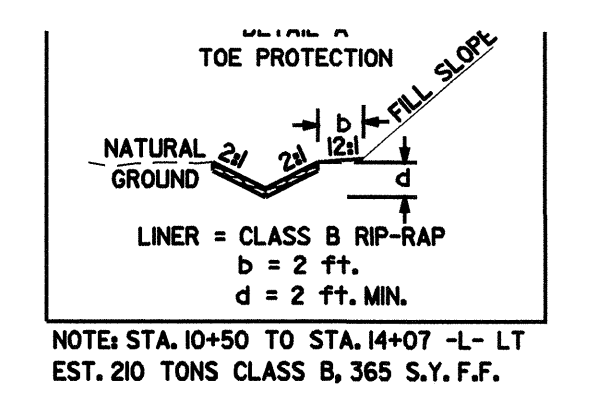
PREPARED IN THE OFFICE OF:
**DIVISION OF HIGHWAYS
PROJECT SERVICES
UTILITIES SECTION**

1591 MAIL SERVICES CENTER
RALEIGH, NC 27699-1591
PHONE (919) 250-4128
FAX (919) 250-4119

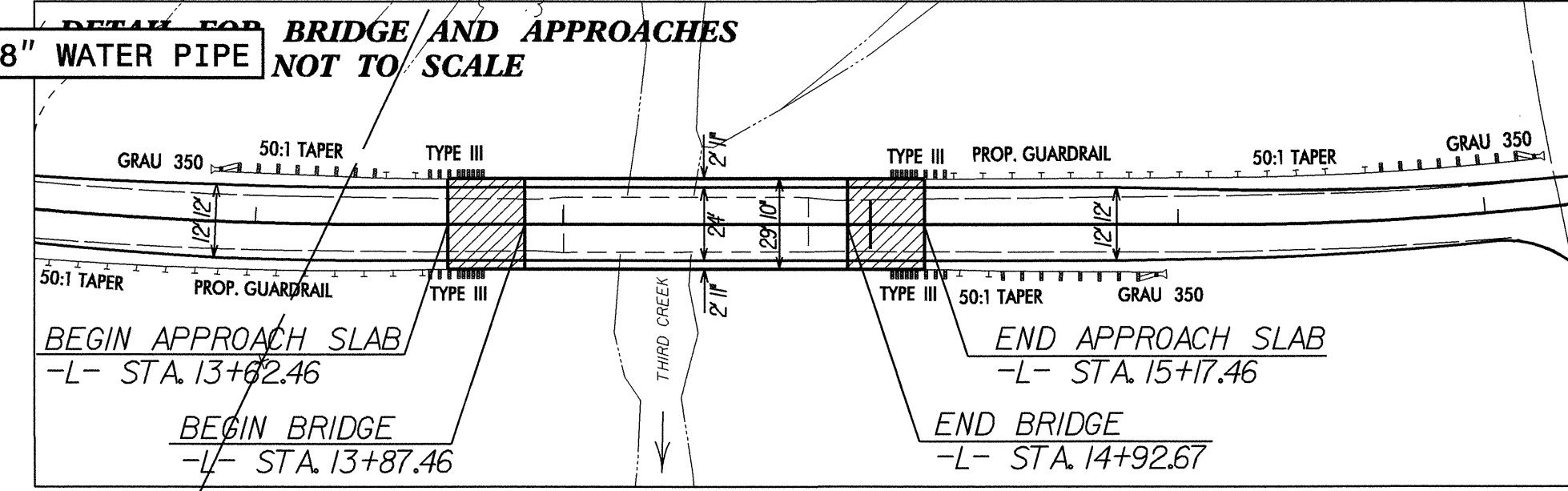
Roger Worthington, P.E. UTILITIES SECTION ENGINEER
Corey Bousquet, P.E. UTILITIES SQUAD LEADER PROJECT ENGINEER
Bo Hemphill, P.E. UTILITIES PROJECT DESIGNER

TIP PROJECT: B-4155

PROJECT REFERENCE NO.	SHEET NO.
B-4155	UC-2
DESIGNED BY: BH	
DRAWN BY: BH	
CHECKED BY: BH	
APPROVED BY: BH	
REVISED:	
NORTH CAROLINA DEPARTMENT OF TRANSPORTATION PROJECT SERVICES UNIT PHONE: (919) 250-4128 FAX: (919) 250-4119	
UTILITY CONSTRUCTION PLANS ONLY	

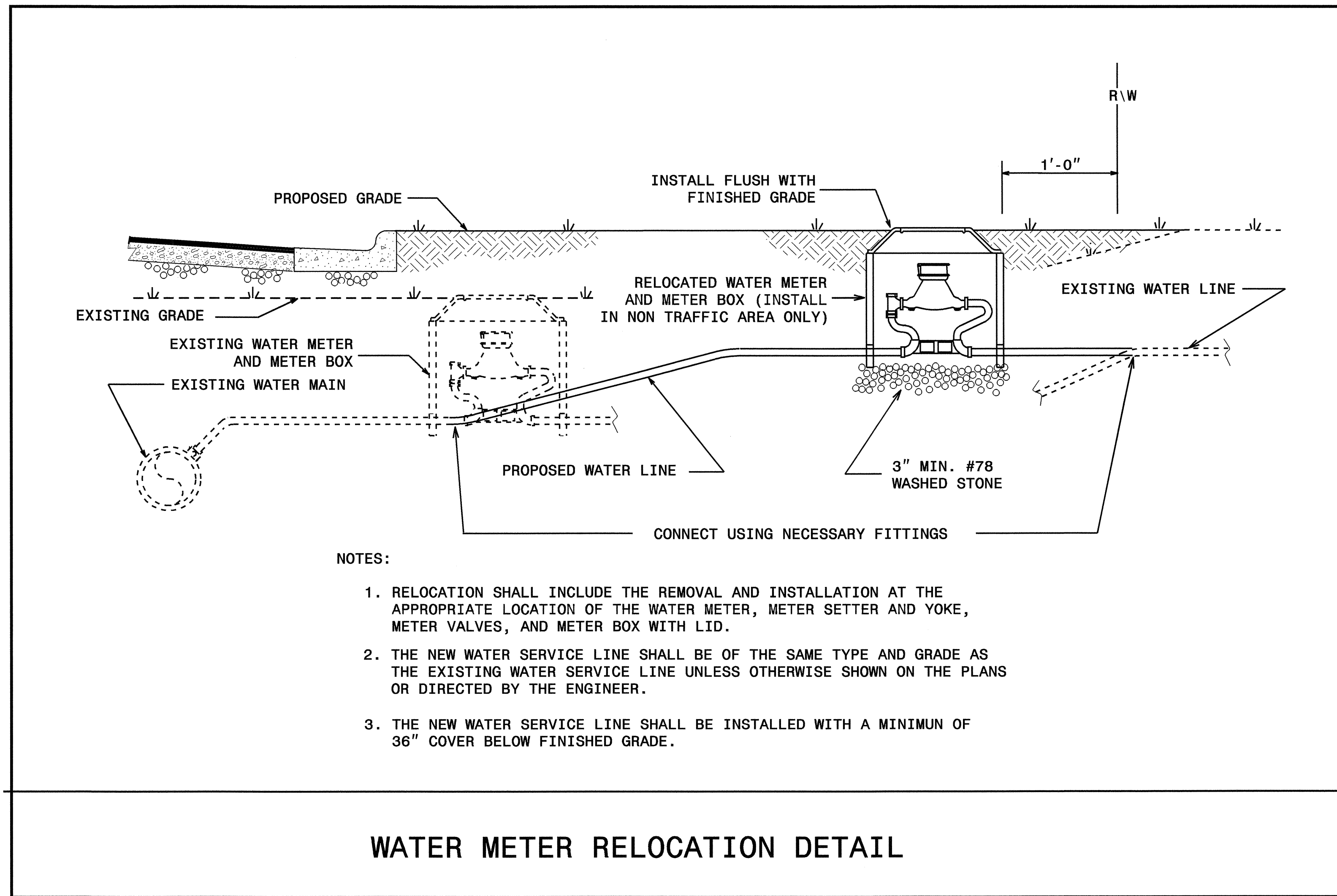
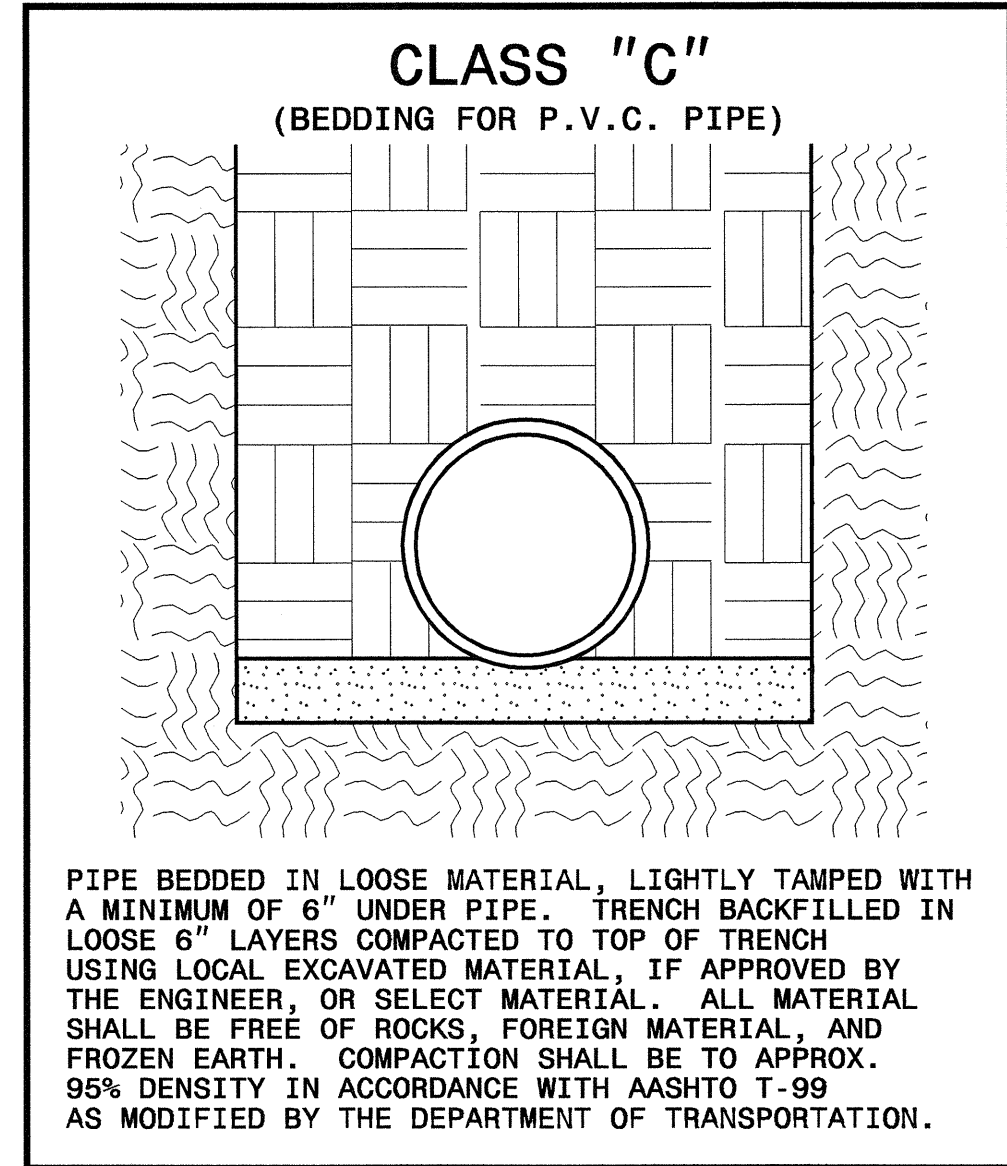


-L-	
PI Sta 11+88.59	PI Sta 17+48.43
$\Delta = 13^\circ 45' 15.2"$ (LT)	$\Delta = 15^\circ 53' 32.0"$ (LT)
D = 4 30' 00.0"	D = 6' 00' 00.0"
L = 305.65'	L = 264.87'
T = 153.56'	T = 133.29'
R = 1273.24'	R = 954.93'
RO = 150'	RO = 150'
S.E. = 4.0%	S.E. = 4.0%
DS = 50 mph	DS = 50 mph



UTILITY CONSTRUCTION

MAXIMUM TRENCH WIDTH AT TOP OF PIPE			
NOMINAL PIPE SIZE (INCHES)	TRENCH WIDTH (INCHES)	NOMINAL PIPE SIZE (INCHES)	TRENCH WIDTH (INCHES)
4	28	20	44
6	30	24	48
8	32	30	54
10	34	36	60
12	36	42	66
14	38	48	72
16	40	54	78
18	42		



09/08/99

TIP PROJECT: B-4155

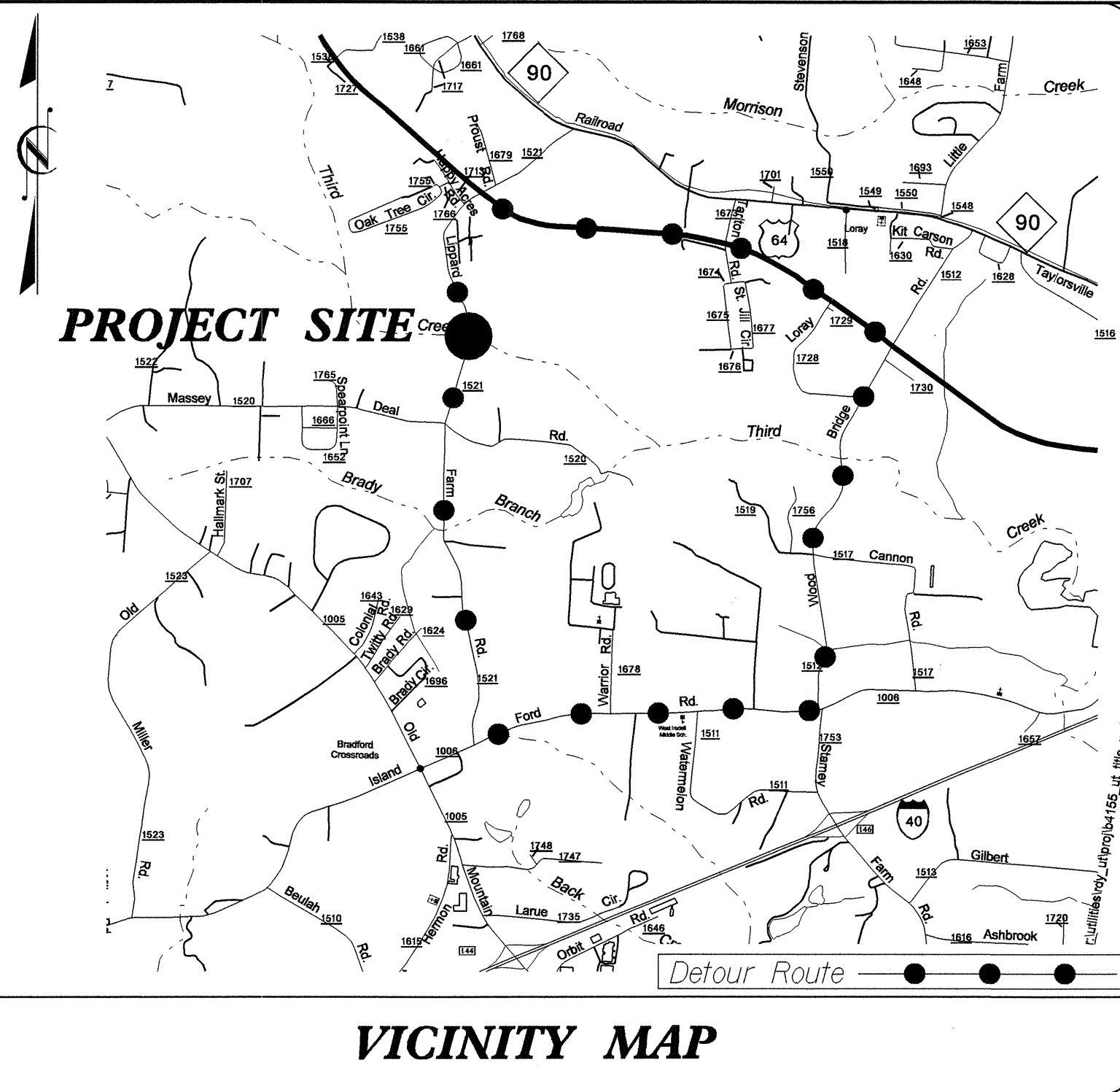
T.I.P. NO.	SHEET NO.
B-4155	UO-1

STATE OF NORTH CAROLINA
DIVISION OF HIGHWAYS

**UTILITY BY OTHERS PLANS
IREDELL COUNTY**

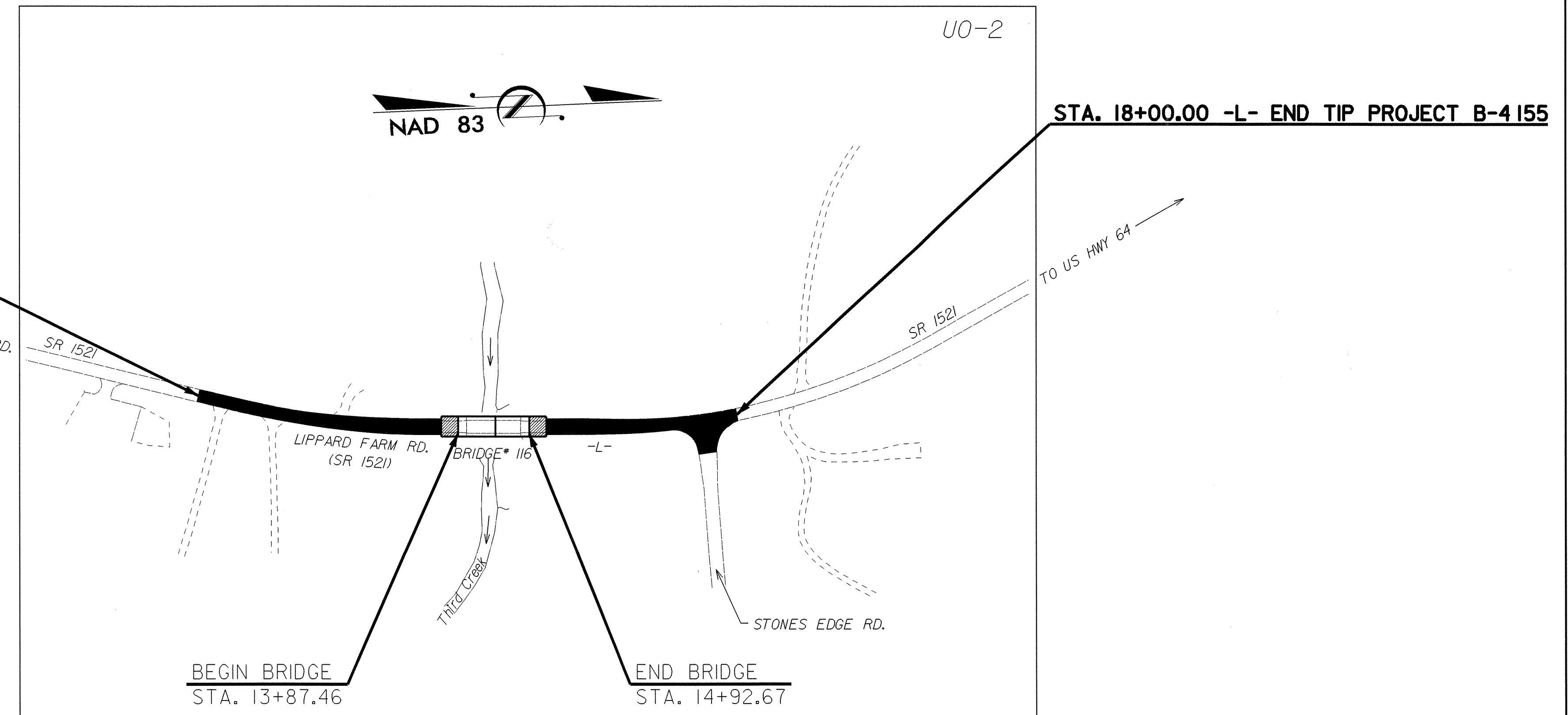
LOCATION: Bridge NO. 116 over Third Creek on SR 1521 (Lippard Farm Road)

TYPE OF WORK: Utilities By Others

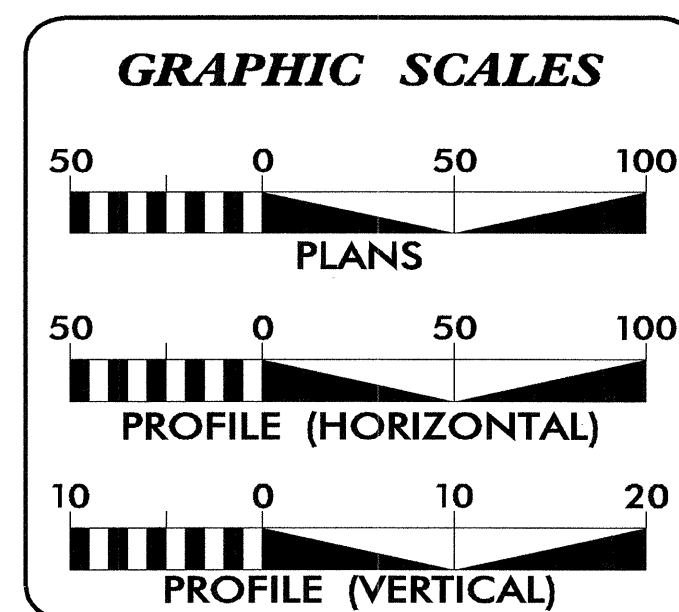


VICINITY MAP

STA. 10+00.00 -L- BEGIN TIP PROJECT B-4155



10-JAN-2007 11:47
 C:\v\h\1521\1521\proj\b4155_ut_1\title_uo1_psh.dgn
 \$\$\$SERVERNAME\$\$\$

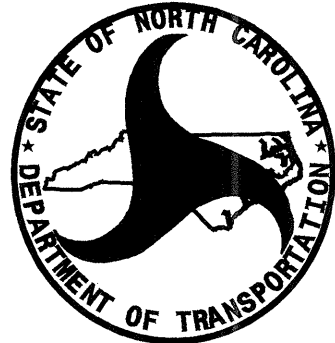


INDEX OF SHEETS

SHEET NO.	DESCRIPTION
UO-1	TITLE SHEET
UO-2	UTILITY BY OTHERS PLAN SHEET

UTILITY OWNERS ON PROJECT

- (1) Energy United EMC
- (2) BellSouth
- (3) West Iredell water Corporation



PREPARED IN THE OFFICE OF:
**DIVISION OF HIGHWAYS
 PROJECT SERVICES
 UTILITIES SECTION**

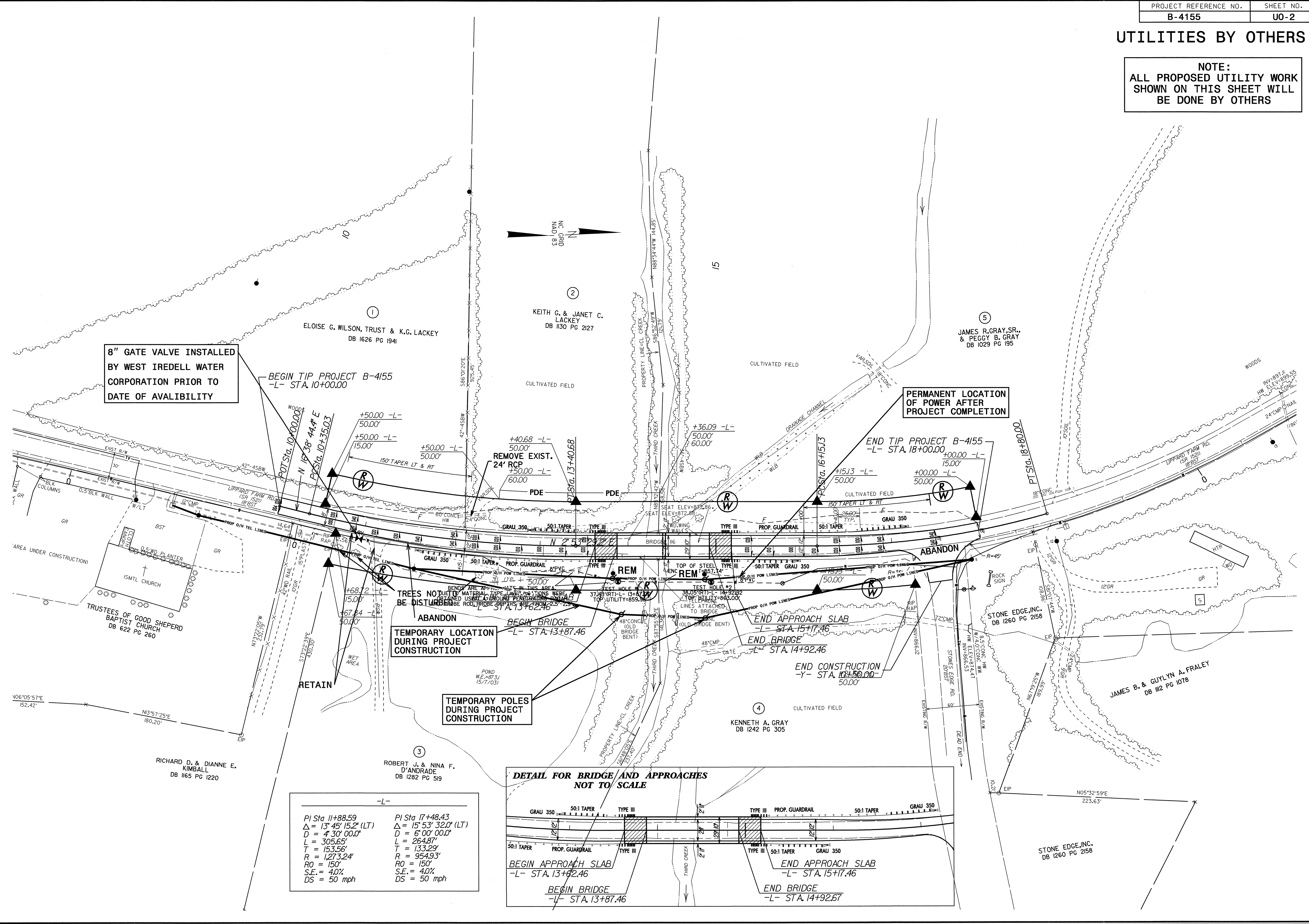
1591 MAIL SERVICES CENTER
 RALEIGH NC 27699-1591
 PHONE (919) 250-4128
 FAX (919) 250-4119

Roger Worthington, P.E. UTILITIES SECTION ENGINEER
Corey Bousquet, P.E. UTILITIES SQUAD LEADER PROJECT ENGINEER
Bo Hemphill, P.E. UTILITIES PROJECT DESIGNER

UTILITIES BY OTHERS

NOTE:
ALL PROPOSED UTILITY WORK
SHOWN ON THIS SHEET WILL
BE DONE BY OTHERS

5/14/99
23-MAR-2007 11:25
F:\V\1411\23-MAR-2007 11:25
B-4155-ut_04_uo2.psh.dgn



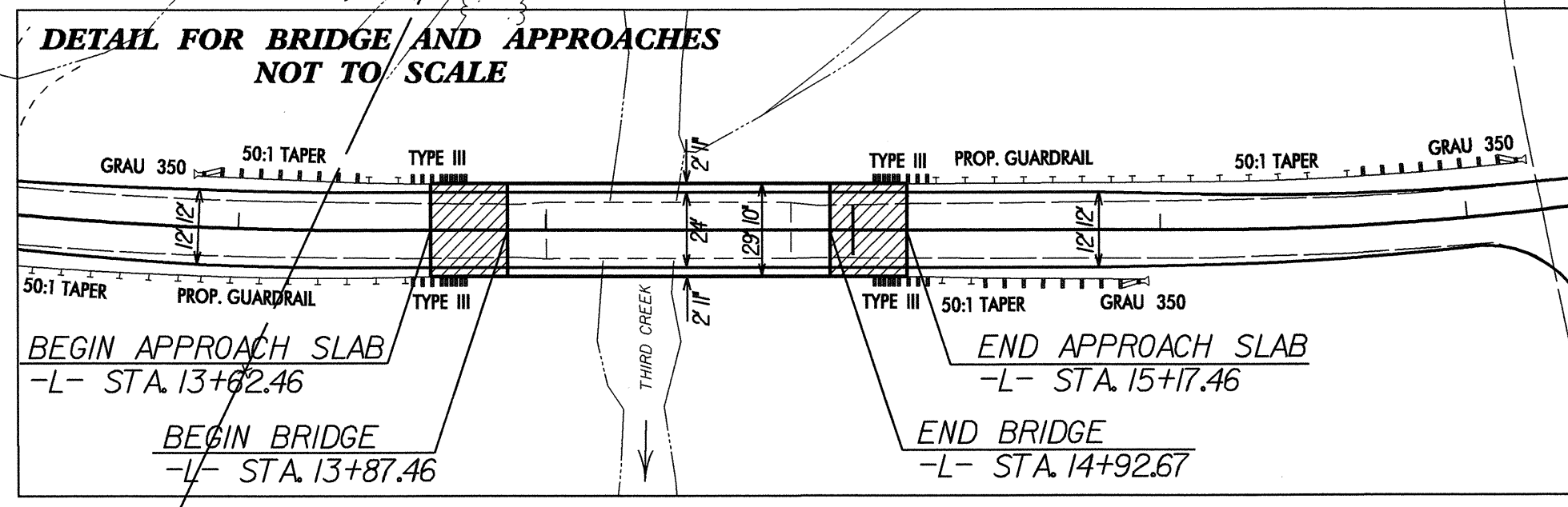
8" GATE VALVE INSTALLED
BY WEST IREDELL WATER
CORPORATION PRIOR TO
DATE OF AVAILABILITY

PERMANENT LOCATION
OF POWER AFTER
PROJECT COMPLETION

TEMPORARY LOCATION
DURING PROJECT
CONSTRUCTION

TEMPORARY POLES
DURING PROJECT
CONSTRUCTION

-L-	
PI Sta 11+88.59	PI Sta 17+48.43
$\Delta = 13' 45" 15.2" (LT)$	$\Delta = 15' 53" 32.0" (LT)$
$D = 4' 30" 00.0"$	$D = 6' 00" 00.0"$
$L = 305.65'$	$L = 264.87'$
$T = 153.56'$	$T = 133.29'$
$R = 1,273.24'$	$R = 954.93'$
$RO = 150'$	$RO = 150'$
$S.E. = 4.0\%$	$S.E. = 4.0\%$
$DS = 50 \text{ mph}$	$DS = 50 \text{ mph}$



23-MAR-2007 11:25
F:\V\1411\23-MAR-2007 11:25
B-4155-ut_04_uo2.psh.dgn