



5/14/99  
 16-AUG-2006 08:13  
 vmouu\_pjsh\ue\_39692-ve\_psh02-rd04.dgn  
 39692-ve\_psh02-rd04.dgn

PROJECT REFERENCE NO.	SHEET NO.
39692	UC-2
DESIGNED BY: VM	
DRAWN BY: VM	
CHECKED BY: RGW	
APPROVED BY: RGW	
REVISED:	
NORTH CAROLINA DEPARTMENT OF TRANSPORTATION PROJECT SERVICES UNIT PHONE: (919) 250-4128 FAX: (919) 250-4119	
UTILITY CONSTRUCTION PLANS ONLY	

**UTILITY CONSTRUCTION**

PLANS ORIGINALLY SEALED BY  
 GREG Y. STEVENS P.E. ON MARCH  
 30, 2006. CHANGED TO REFLECT  
 ROADWAY AND DRAINAGE CHANGES.

ALL WATER AND SEWER LINES ARE  
 OWNED BY THE TOWN OF BROADWAY

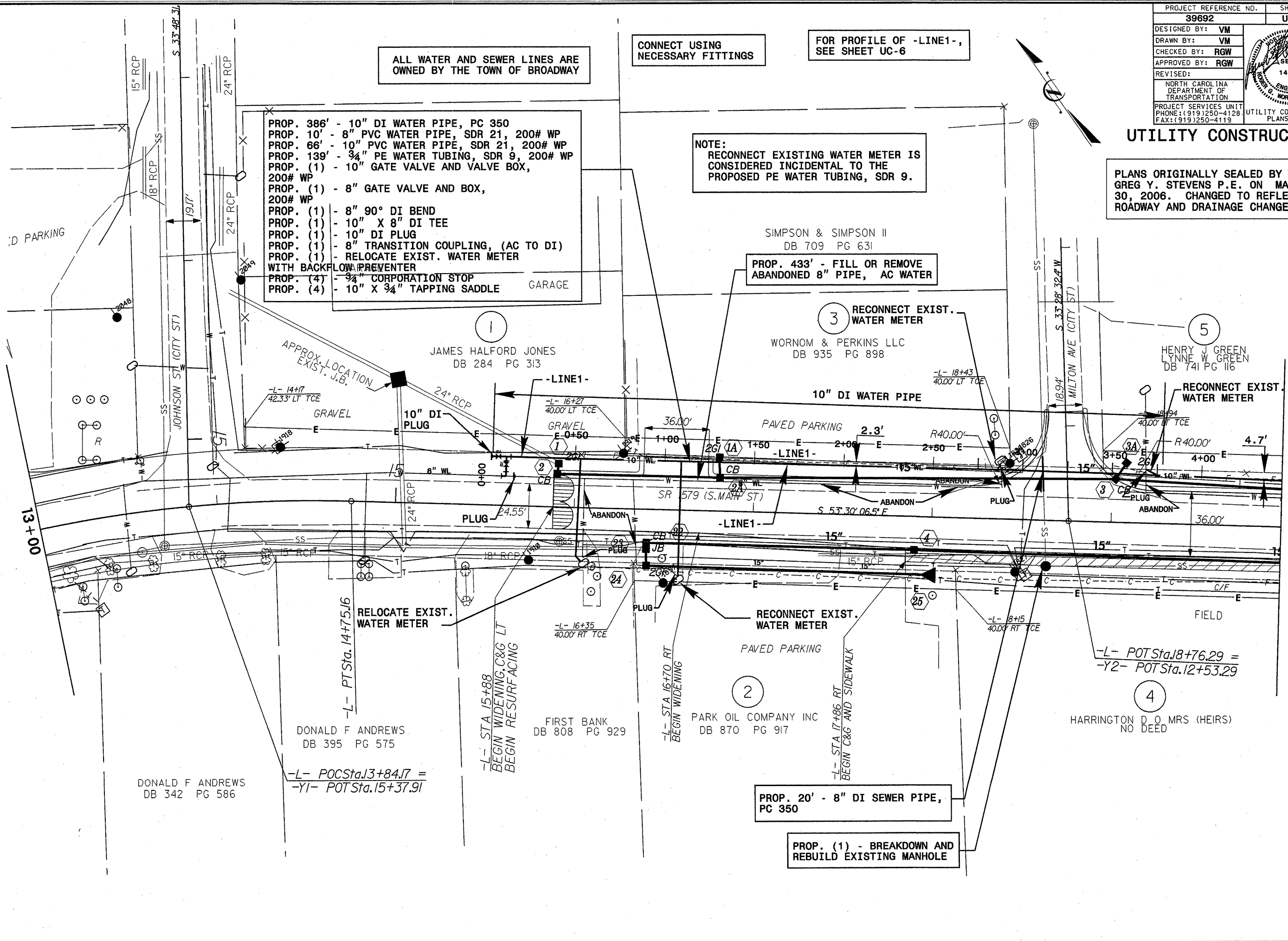
CONNECT USING  
 NECESSARY FITTINGS

FOR PROFILE OF -LINE1-,  
 SEE SHEET UC-6

NOTE:  
 RECONNECT EXISTING WATER METER IS  
 CONSIDERED INCIDENTAL TO THE  
 PROPOSED PE WATER TUBING, SDR 9.

- PROP. 386' - 10" DI WATER PIPE, PC 350
- PROP. 10' - 8" PVC WATER PIPE, SDR 21, 200# WP
- PROP. 66' - 10" PVC WATER PIPE, SDR 21, 200# WP
- PROP. 139' - 3/4" PE WATER TUBING, SDR 9, 200# WP
- PROP. (1) - 10" GATE VALVE AND VALVE BOX, 200# WP
- PROP. (1) - 8" GATE VALVE AND BOX, 200# WP
- PROP. (1) - 8" 90° DI BEND
- PROP. (1) - 10" X 8" DI TEE
- PROP. (1) - 10" DI PLUG
- PROP. (1) - 8" TRANSITION COUPLING, (AC TO DI)
- PROP. (1) - RELOCATE EXIST. WATER METER WITH BACKFLOW PREVENTER
- PROP. (4) - 24" CORPORATION STOP
- PROP. (4) - 10" X 3/4" TAPPING SADDLE

PROP. 433' - FILL OR REMOVE  
 ABANDONED 8" PIPE, AC WATER



MATCHLINE STA. 19 + 95  
 SEE UC-3

DONALD F ANDREWS  
 DB 342 PG 586

DONALD F ANDREWS  
 DB 395 PG 575

FIRST BANK  
 DB 808 PG 929

PARK OIL COMPANY INC  
 DB 870 PG 917

HARRINGTON D O MRS (HEIRS)  
 NO DEED

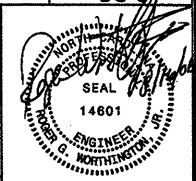
PROP. 20' - 8" DI SEWER PIPE,  
 PC 350

PROP. (1) - BREAKDOWN AND  
 REBUILD EXISTING MANHOLE

5/14/99

16-AUG-2006 08:33  
v:\proj\39692 UC\proj\psh\uc\39692 UC\_psh\03\_Rd05.dgn

PROJECT REFERENCE NO.	SHEET NO.
39692	UC-3
DESIGNED BY: VM	
DRAWN BY: VM	
CHECKED BY: RGW	
APPROVED BY: RGW	
REVISED:	
NORTH CAROLINA DEPARTMENT OF TRANSPORTATION	
PROJECT SERVICES UNIT PHONE: (919) 250-4128 FAX: (919) 250-4119	UTILITY CONSTRUCTION PLANS ONLY



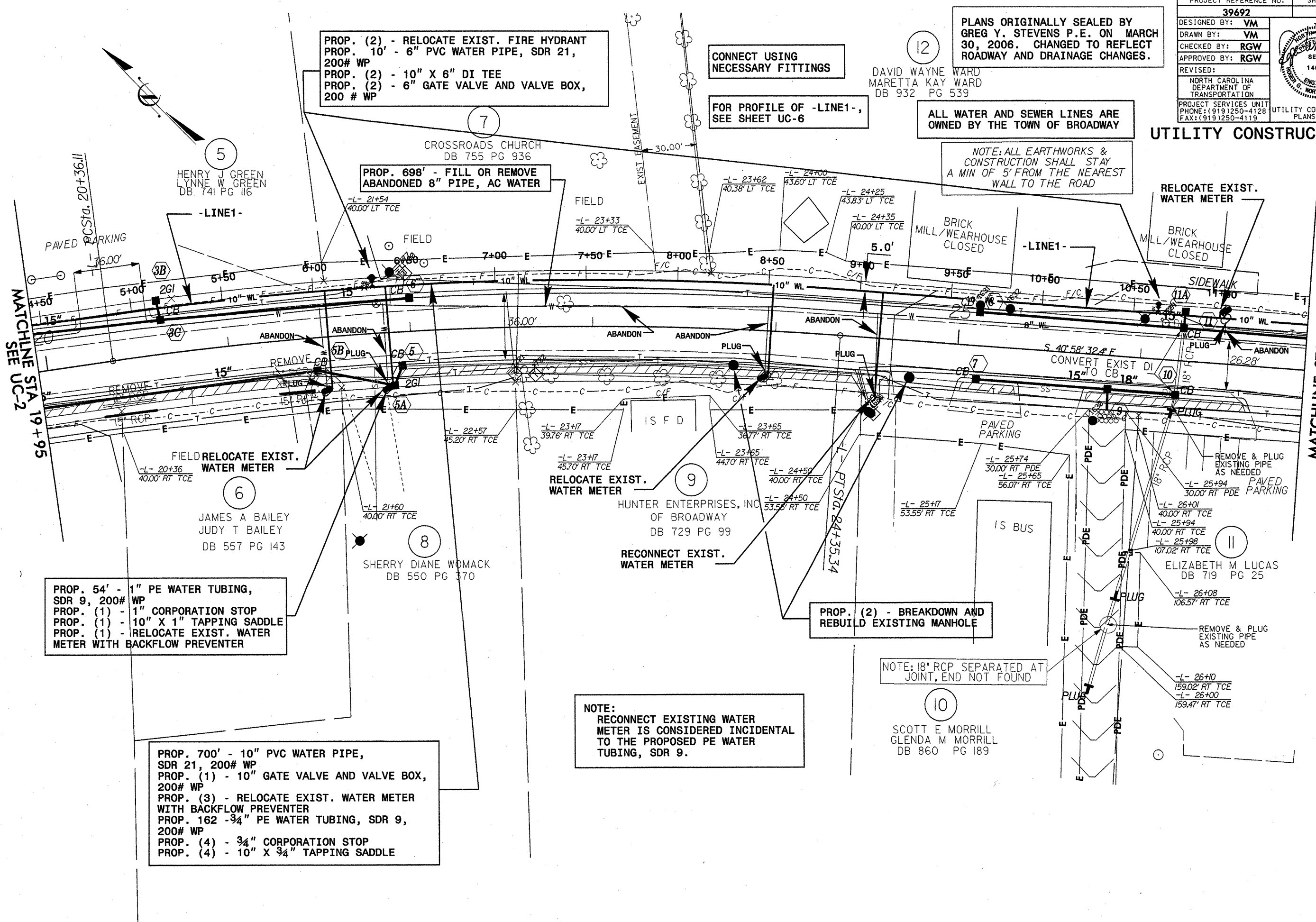
PLANS ORIGINALLY SEALED BY GREG Y. STEVENS P.E. ON MARCH 30, 2006. CHANGED TO REFLECT ROADWAY AND DRAINAGE CHANGES.

DAVID WAYNE WARD  
MARETTA KAY WARD  
DB 932 PG 539

ALL WATER AND SEWER LINES ARE OWNED BY THE TOWN OF BROADWAY

UTILITY CONSTRUCTION

NOTE: ALL EARTHWORKS & CONSTRUCTION SHALL STAY A MIN OF 5' FROM THE NEAREST WALL TO THE ROAD



PROP. (2) - RELOCATE EXIST. FIRE HYDRANT  
PROP. 10' - 6" PVC WATER PIPE, SDR 21, 200# WP  
PROP. (2) - 10" X 6" DI TEE  
PROP. (2) - 6" GATE VALVE AND VALVE BOX, 200 # WP

CONNECT USING NECESSARY FITTINGS

FOR PROFILE OF -LINE1-, SEE SHEET UC-6

PROP. 698' - FILL OR REMOVE ABANDONED 8" PIPE, AC WATER

RELOCATE EXIST. WATER METER

MATCHLINE STA. 19+95  
SEE UC-2

MATCHLINE STA. 26+90  
SEE UC-4

PROP. 54' - 1" PE WATER TUBING, SDR 9, 200# WP  
PROP. (1) - 1" CORPORATION STOP  
PROP. (1) - 10" X 1" TAPPING SADDLE  
PROP. (1) - RELOCATE EXIST. WATER METER WITH BACKFLOW PREVENTER

NOTE: RECONNECT EXISTING WATER METER IS CONSIDERED INCIDENTAL TO THE PROPOSED PE WATER TUBING, SDR 9.

PROP. (2) - BREAKDOWN AND REBUILD EXISTING MANHOLE

NOTE: 18" RCP SEPARATED AT JOINT, END NOT FOUND

PROP. 700' - 10" PVC WATER PIPE, SDR 21, 200# WP  
PROP. (1) - 10" GATE VALVE AND VALVE BOX, 200# WP  
PROP. (3) - RELOCATE EXIST. WATER METER WITH BACKFLOW PREVENTER  
PROP. 162 - 3/4" PE WATER TUBING, SDR 9, 200# WP  
PROP. (4) - 3/4" CORPORATION STOP  
PROP. (4) - 10" X 3/4" TAPPING SADDLE

SCOTT E MORRILL  
GLENDA M MORRILL  
DB 860 PG 189

5/14/99

15-AUC-2006\_0814  
\\p01\proj\39692\UC\psh\04\_Rd06.dgn

PROJECT REFERENCE NO. <b>39692</b>	SHEET NO. <b>UC-4</b>
DESIGNED BY: <b>VM</b>	
DRAWN BY: <b>VM</b>	
CHECKED BY: <b>RGW</b>	
APPROVED BY: <b>RGW</b>	
REVISED:	
NORTH CAROLINA DEPARTMENT OF TRANSPORTATION	
PROJECT SERVICES UNIT PHONE: (919) 250-4128 FAX: (919) 250-4119	
UTILITY CONSTRUCTION PLANS ONLY	

### UTILITY CONSTRUCTION

PLANS ORIGINALLY SEALED BY  
GREG Y. STEVENS P.E. ON MARCH  
30, 2006. CHANGED TO REFLECT  
ROADWAY AND DRAINAGE CHANGES.

PROP. 710' - 10" PVC WATER PIPE,  
SDR 21, 200# WP  
PROP. (2) - RELOCATE EXIST. WATER  
METER WITH BACKFLOW PREVENTER  
PROP. 106' - 3/4" PE WATER TUBING,  
SDR 9, 200# WP  
PROP. (2) - 3/4" CORPORATION STOP  
PROP. (2) - 10" X 3/4" TAPPING SADDLE

ALL WATER AND SEWER LINES ARE  
OWNED BY THE TOWN OF BROADWAY

FOR PROFILE OF -LINE1-,  
SEE SHEET UC-6

PROP. 5' - 6" PVC WATER PIPE,  
SDR 21, 200# WP  
PROP. (1) - RELOCATE EXIST. FIRE HYDRANT  
PROP. (1) - 10" X 6" DI TEE  
PROP. (1) - 6" GATE VALVE AND VALVE BOX,  
200# WP

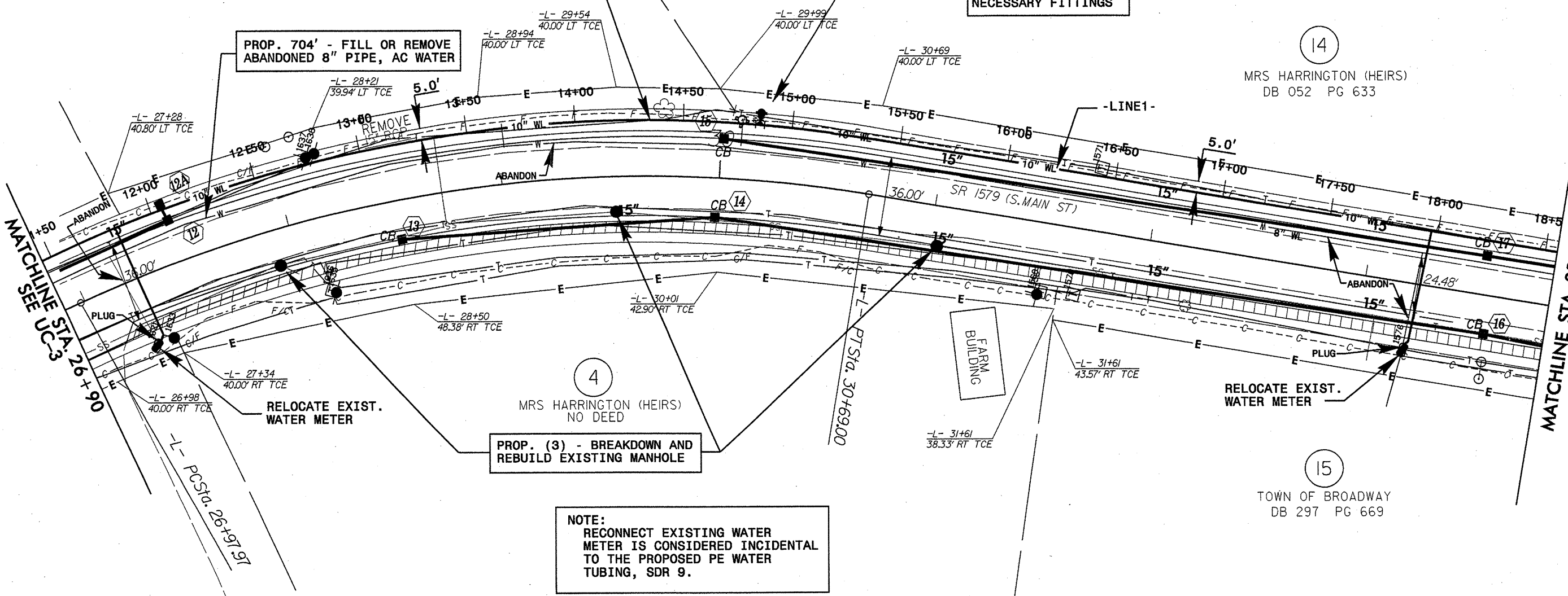
CONNECT USING  
NECESSARY FITTINGS

13  
DAVID HARRINGTON  
DB 690 PG 670

14  
MRS HARRINGTON (HEIRS)  
DB 052 PG 633

4  
MRS HARRINGTON (HEIRS)  
NO DEED

15  
TOWN OF BROADWAY  
DB 297 PG 669



PROP. (3) - BREAKDOWN AND  
REBUILD EXISTING MANHOLE

NOTE:  
RECONNECT EXISTING WATER  
METER IS CONSIDERED INCIDENTAL  
TO THE PROPOSED PE WATER  
TUBING, SDR 9.

PI Sta 28+89.20	PI Sta 28+89.20
Δ = 34° 13' 26.6" (RT)	Δ = 34° 13' 26.6" (RT)
D = 9° 13' 27.0"	D = 9° 13' 27.0"
L = 371.03'	L = 371.03'
T = 191.23'	T = 191.23'
R = 621.15'	R = 621.15'

MATCHLINE STA. 33+85 -L-  
SEE UC-5

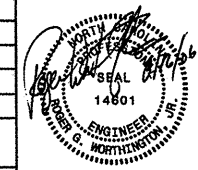
MATCHLINE UC-3  
STA. 26+90





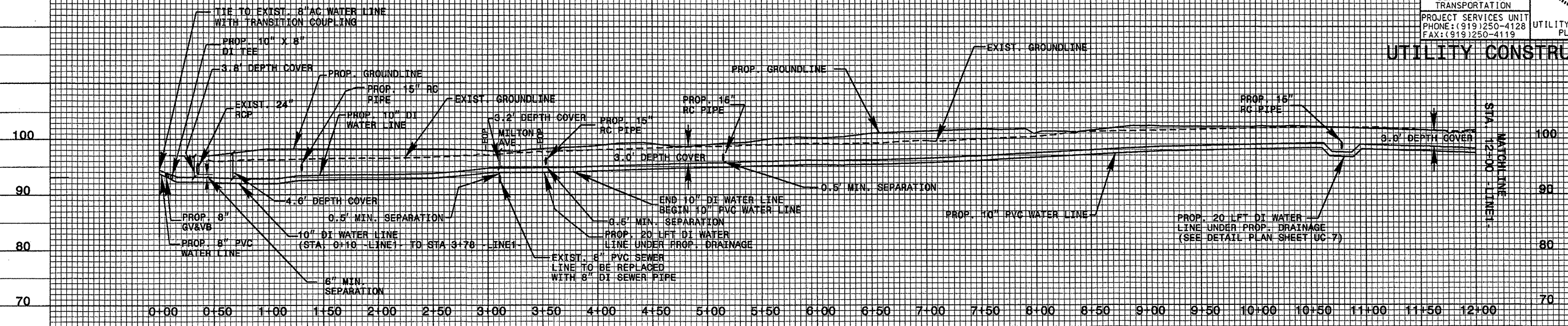
5/14/99

16-AUG-2006 08:54  
d:\vmo\psh\vmoua\projects\39692\proj\psh\uc\39692.uc\psh06-upr.dgn  
\$\$\$\$\$USERNAME\$\$\$\$\$

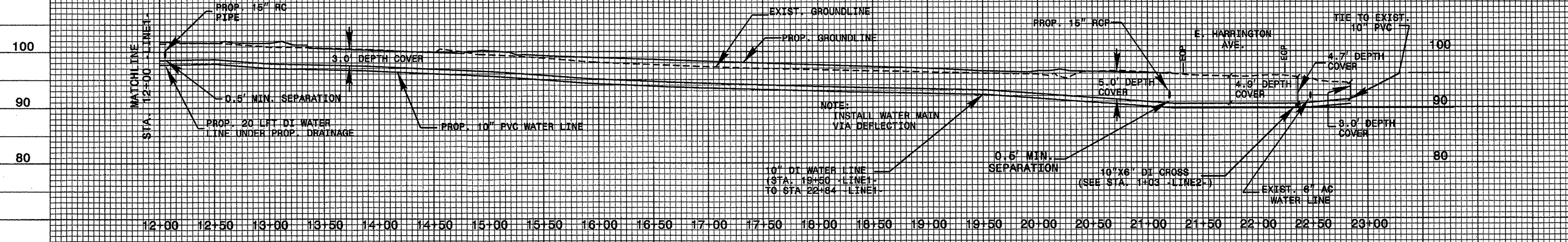
PROJECT REFERENCE NO.	39692	SHEET NO.	UC-6
DESIGNED BY:	VM		
DRAWN BY:	VM		
CHECKED BY:	RGW		
APPROVED BY:	RGW		
REVISED:		NORTH CAROLINA DEPARTMENT OF TRANSPORTATION	
PROJECT SERVICES UNIT		UTILITY CONSTRUCTION PLANS ONLY	
PHONE: (919) 250-4128		FAX: (919) 250-4119	

PLANS ORIGINALLY SEALED BY  
GREG Y. STEVENS P.E. ON MARCH  
30, 2006. CHANGED TO REFLECT  
ROADWAY AND DRAINAGE CHANGES.

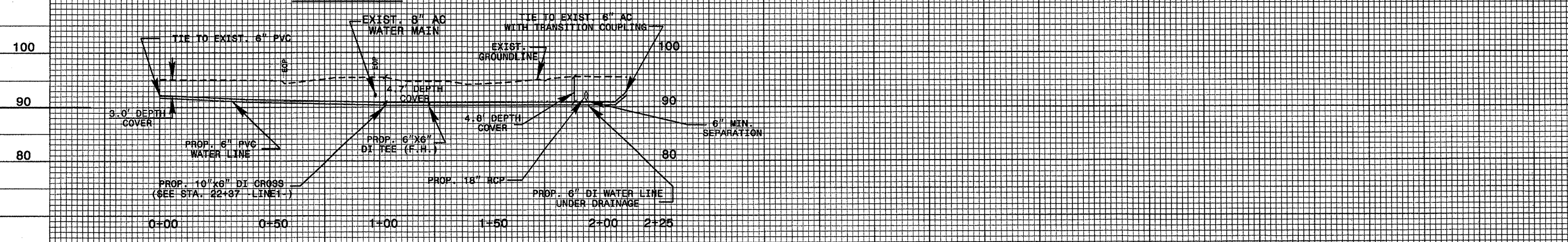
**-LINE1-**



**-LINE1- (CONT'D)**



**-LINE2-**



# DETAIL SHEET

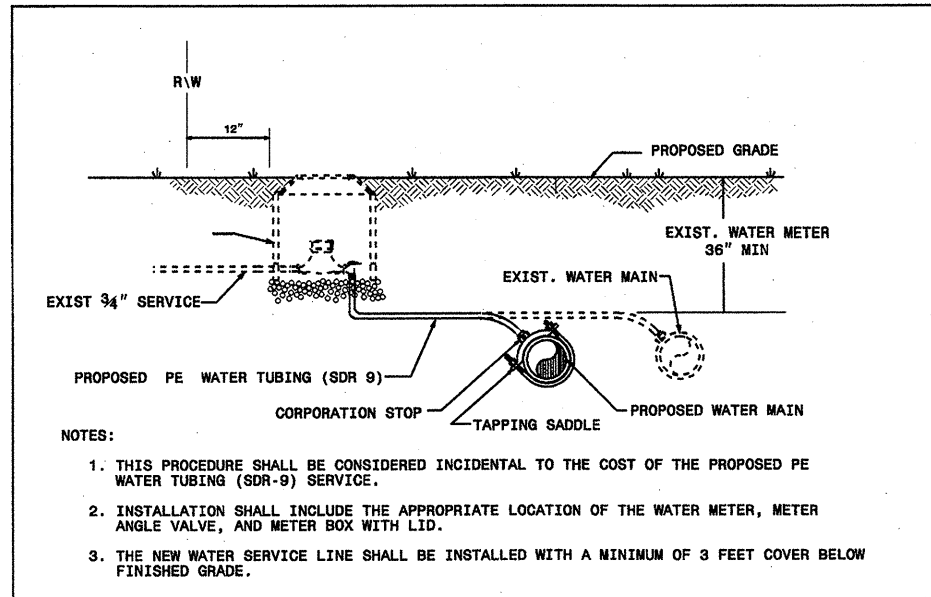
PROJECT REFERENCE NO. <b>39692</b>	SHEET NO. <b>UC-7</b>
DESIGNED BY: <b>VM</b>	
DRAWN BY: <b>VM</b>	
CHECKED BY: <b>RGW</b>	
APPROVED BY: <b>RGW</b>	
REVISED:	
NORTH CAROLINA DEPARTMENT OF TRANSPORTATION DESIGN SERVICES UNIT PHONE: (919) 250-4128 FAX: (919) 250-4119	
UTILITY CONSTRUCTION PLANS ONLY	

## UTILITY CONSTRUCTION

PLANS ORIGINALLY SEALED BY GREG Y. STEVENS P.E. ON MARCH 30, 2006. CHANGED TO REFLECT ROADWAY AND DRAINAGE CHANGES.

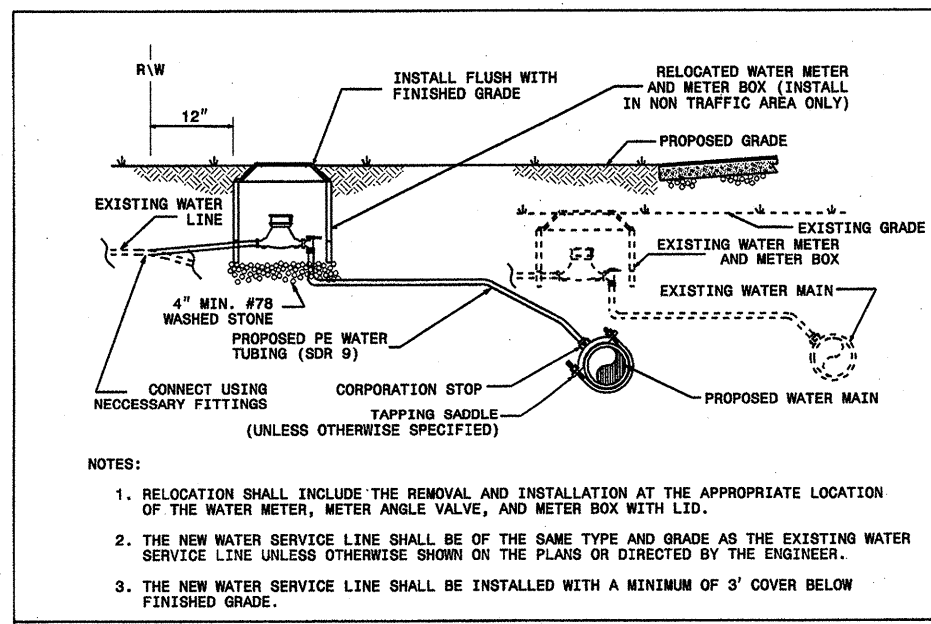
NOTE:  
 DETAILS ARE NOT TO SCALE

MAXIMUM TRENCH WIDTH AT TOP OF PIPE			
NOMINAL PIPE SIZE (INCHES)	TRENCH WIDTH (INCHES)	NOMINAL PIPE SIZE (INCHES)	TRENCH WIDTH (INCHES)
4	28	20	44
6	30	24	48
8	32	30	54
10	34	36	60
12	36	42	66
14	38	48	72
16	40	54	78
18	42		



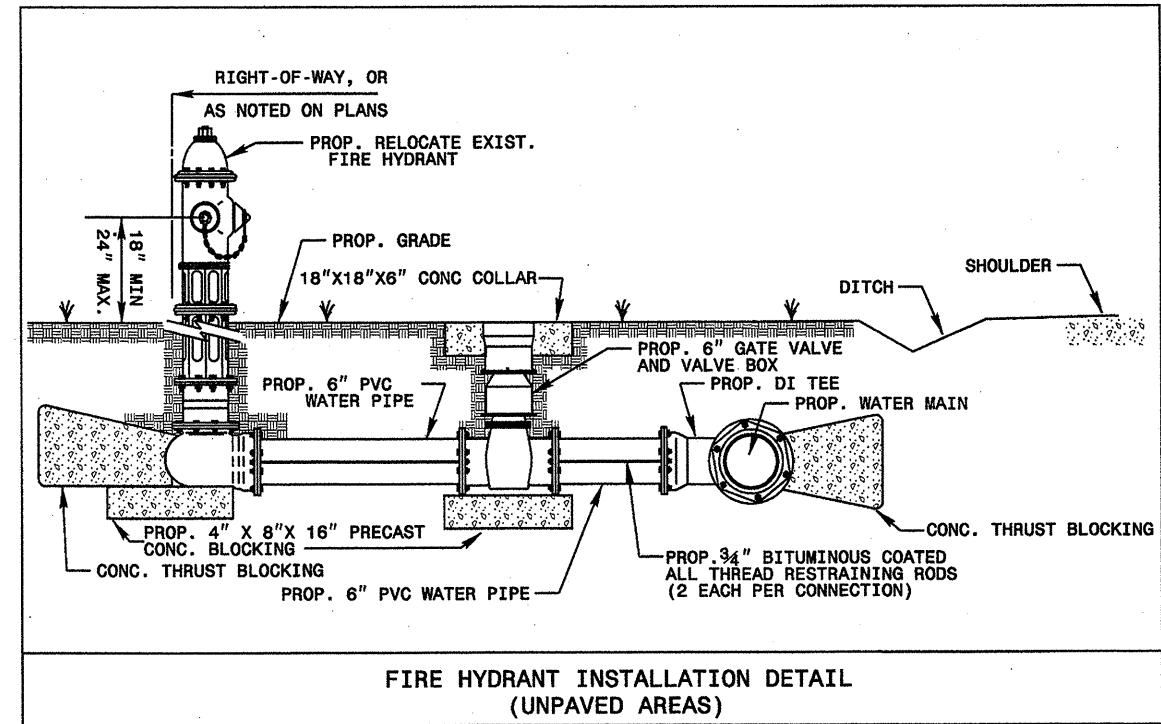
- NOTES:
1. THIS PROCEDURE SHALL BE CONSIDERED INCIDENTAL TO THE COST OF THE PROPOSED PE WATER TUBING (SDR-9) SERVICE.
  2. INSTALLATION SHALL INCLUDE THE APPROPRIATE LOCATION OF THE WATER METER, METER ANGLE VALVE, AND METER BOX WITH LID.
  3. THE NEW WATER SERVICE LINE SHALL BE INSTALLED WITH A MINIMUM OF 3 FEET COVER BELOW FINISHED GRADE.

RECONNECT EXISTING WATER METER DETAIL

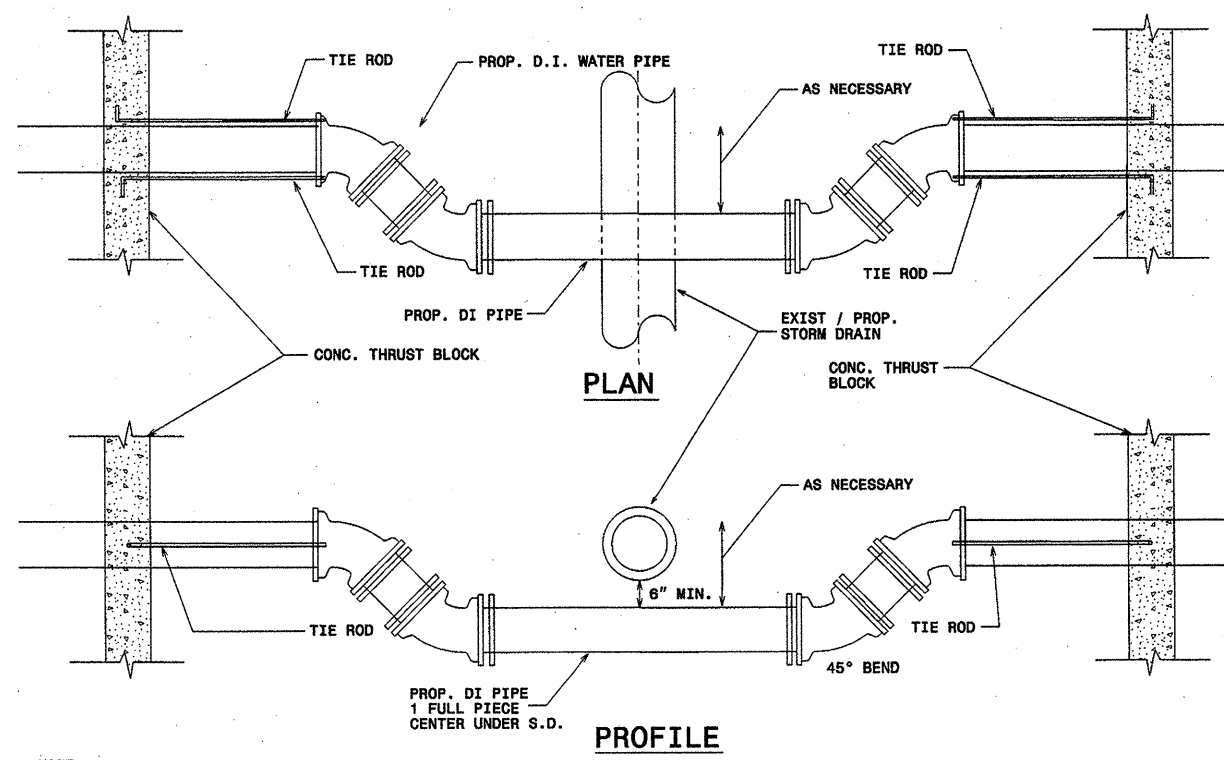


- NOTES:
1. RELOCATION SHALL INCLUDE THE REMOVAL AND INSTALLATION AT THE APPROPRIATE LOCATION OF THE WATER METER, METER ANGLE VALVE, AND METER BOX WITH LID.
  2. THE NEW WATER SERVICE LINE SHALL BE OF THE SAME TYPE AND GRADE AS THE EXISTING WATER SERVICE LINE UNLESS OTHERWISE SHOWN ON THE PLANS OR DIRECTED BY THE ENGINEER.
  3. THE NEW WATER SERVICE LINE SHALL BE INSTALLED WITH A MINIMUM OF 3' COVER BELOW FINISHED GRADE.

RELOCATE EXISTING WATER METER DETAIL

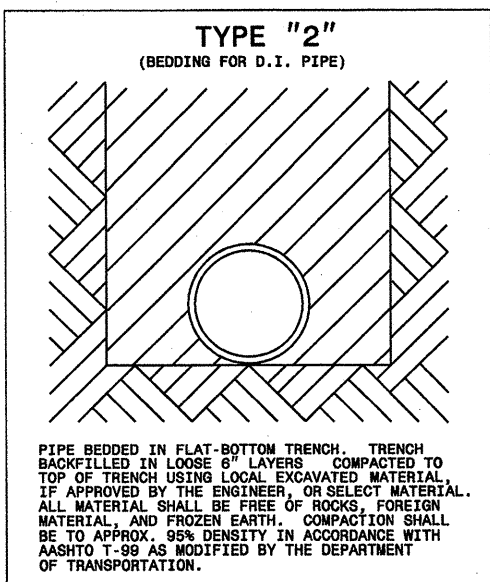


FIRE HYDRANT INSTALLATION DETAIL (UNPAVED AREAS)

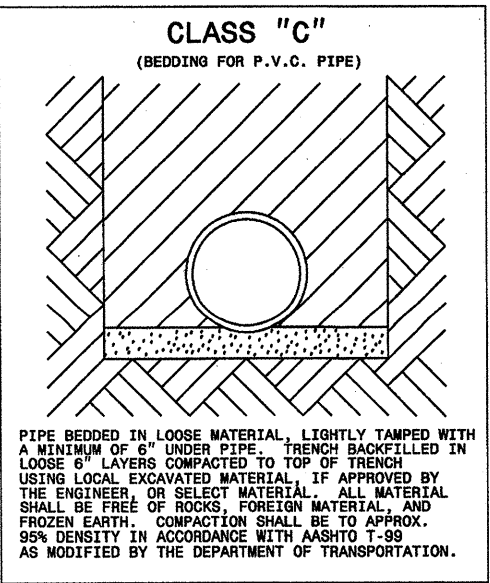


- NOTE:
1. FITTINGS SHALL BE RESTRAINED BY USING TIE RODS OR OTHER METHOD AS APPROVED BY ENGINEER.
  2. CONCRETE THRUST BLOCK SHALL BE PLACED AND CURED THREE DAYS PRIOR TO CUTTING EXISTING PIPE.
  3. THE ABOVE MENTIONED SHALL BE CONSIDERED INCIDENTAL TO THE COST OF THE DUCTILE IRON WATER PIPE.

INSTALLATION OF 10" DI WATER PIPE AT PROP. STORM DRAINAGE AS SHOWN ON PLANS



PIPE BEDDED IN FLAT-BOTTOM TRENCH. TRENCH BACKFILLED IN LOOSE 6" LAYERS COMPACTED TO TOP OF TRENCH USING LOCAL EXCAVATED MATERIAL, IF APPROVED BY THE ENGINEER, OR SELECT MATERIAL. ALL MATERIAL SHALL BE FREE OF ROCKS, FOREIGN MATERIAL, AND FROZEN EARTH. COMPACTION SHALL BE TO APPROX. 95% DENSITY IN ACCORDANCE WITH AASHTO T-99 AS MODIFIED BY THE DEPARTMENT OF TRANSPORTATION.



PIPE BEDDED IN LOOSE MATERIAL, LIGHTLY TAMPED WITH A MINIMUM OF 6" UNDER PIPE. TRENCH BACKFILLED IN LOOSE 6" LAYERS COMPACTED TO TOP OF TRENCH USING LOCAL EXCAVATED MATERIAL, IF APPROVED BY THE ENGINEER, OR SELECT MATERIAL. ALL MATERIAL SHALL BE FREE OF ROCKS, FOREIGN MATERIAL, AND FROZEN EARTH. COMPACTION SHALL BE TO APPROX. 95% DENSITY IN ACCORDANCE WITH AASHTO T-99 AS MODIFIED BY THE DEPARTMENT OF TRANSPORTATION.