

9/29/99
 CONTRACT: C201225
 TIP: R-06091B

STATE OF NORTH CAROLINA
 DIVISION OF HIGHWAYS

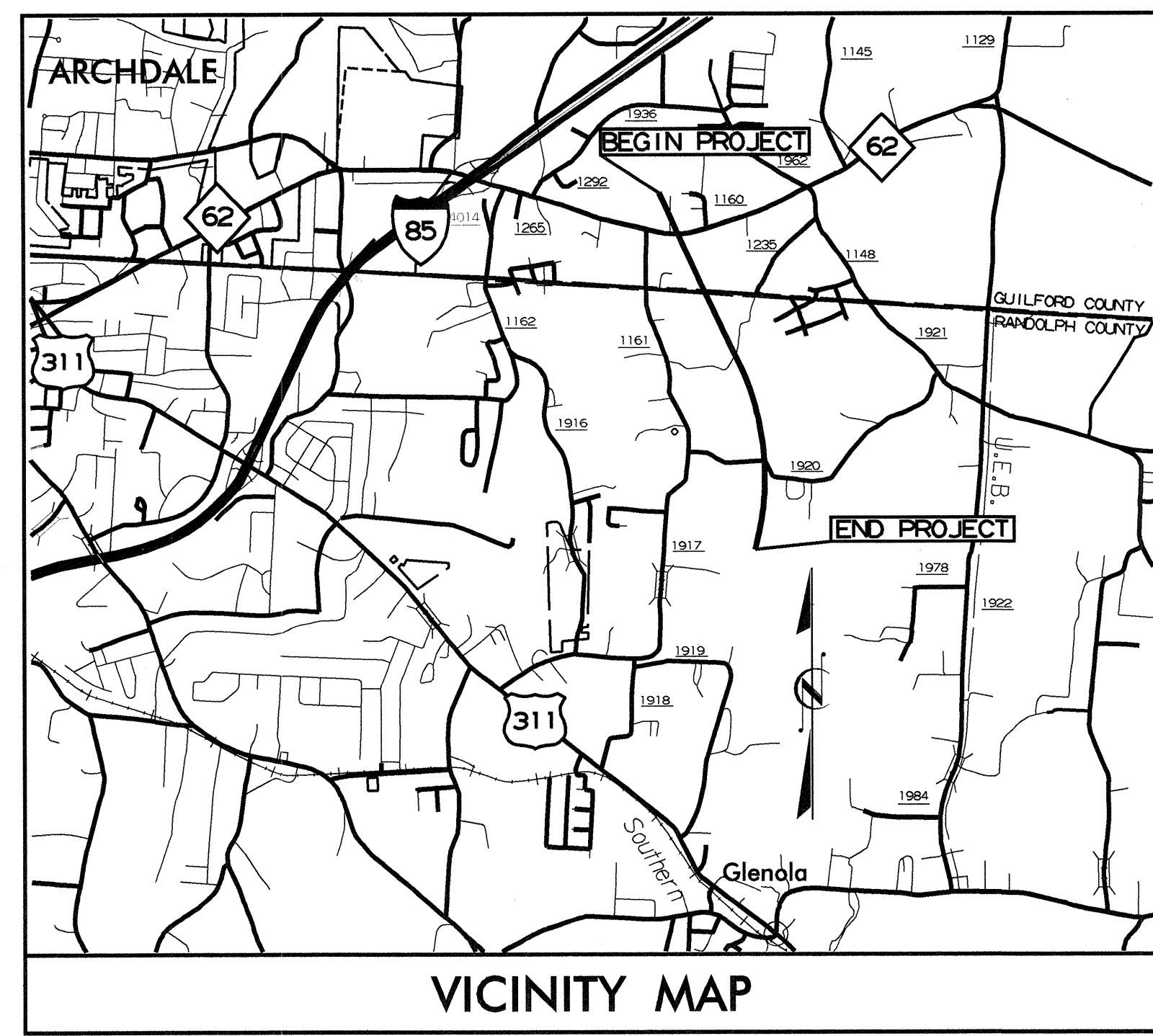
METRIC

ALL DIMENSIONS IN THESE PLANS ARE IN METERS AND / OR MILLIMETERS UNLESS OTHERWISE SHOWN

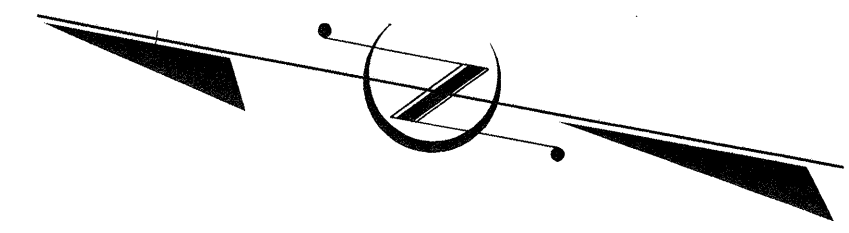
T.I.P. NO.	SHEET NO.
R-06091B	UC-1

**UTILITY CONSTRUCTION PLANS
 GUILFORD - RANDOLPH**

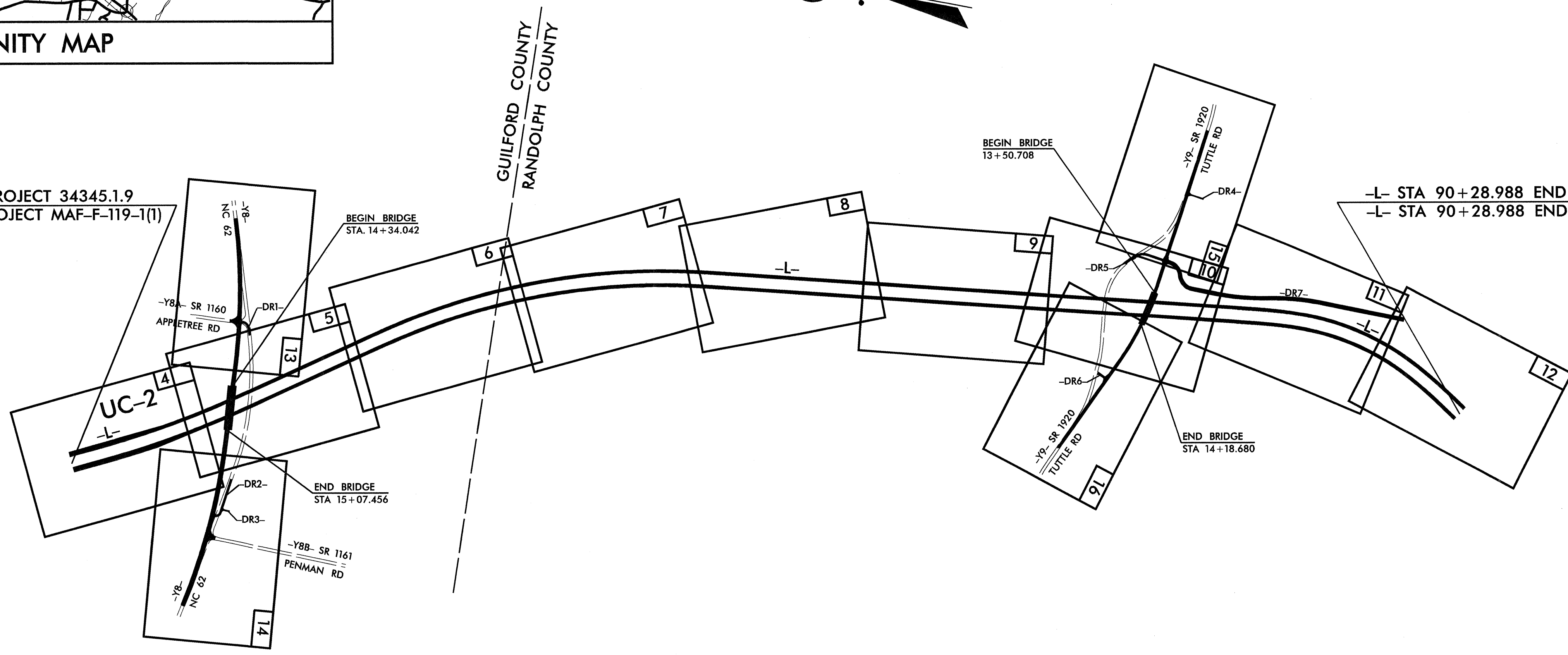
LOCATION: US 311 HIGH POINT EAST BELT FROM I-85 TO SOUTH OF SR 1920 (TUTTLE RD) NORTH OF ARCHDALE



VICINITY MAP



-L- STA 60+59.109 BEGIN STATE PROJECT 34345.1.9
 -L- STA 60+59.109 BEGIN F. A. PROJECT MAF-F-119-1(1)



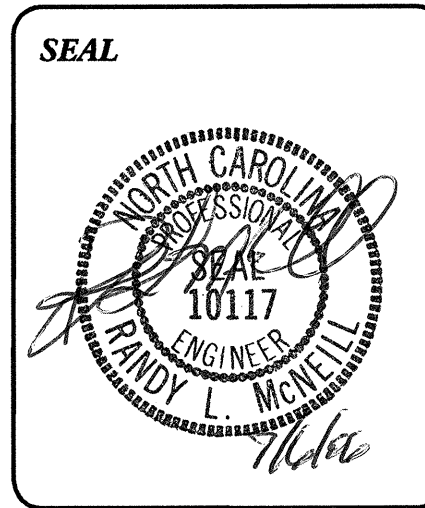
-L- STA 90+28.988 END STATE PROJECT 34345.1.9
 -L- STA 90+28.988 END F. A. PROJECT MAF-F-119-1(1)

INDEX OF SHEETS

SHEET NO.	DESCRIPTION
UC-1	TITLE SHEET
UC-2	UTILITY CONSTRUCTION PLAN SHEET
UC-3	UTILITY CONSTRUCTION PROFILE SHEET

WATER AND SEWER OWNERS ON PROJECT

WATER - CITY OF HIGH POINT

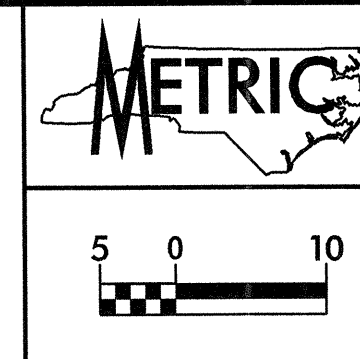


dmp

PREPARED IN THE OFFICE OF:
DAVIS-MARTIN-POWELL AND ASSOCIATES, INC.

6415 OLD PLANK ROAD
 HIGH POINT, NC 27265
 PHONE (336) 886-4821
 FAX (336) 886-4458

Randy McNeill, P.E. UTILITIES PROJECT MANAGER
Andy Larrick, P.E. UTILITIES PROJECT ENGINEER
Ralph Lowe UTILITIES PROJECT DESIGNER



PROJECT REFERENCE NO.	R-06091B	SHEET NO.	UC-2
DESIGNED BY:	DMP		
DRAWN BY:	DMP		
CHECKED BY:	DMP		
APPROVED BY:			
REVISED:			
NORTH CAROLINA DEPARTMENT OF TRANSPORTATION		UTILITY CONSTRUCTION PLANS ONLY	
PROJECT SERVICES UNIT		PHONE: (919) 250-4128	
FAX: (919) 250-4119			

FAIRFIELD GOLF CLUB, INC.
DB 3345 PG 707
PB 5 PG 351
22.140 HA (TAX MAP)

FAIRFIELD GOLF CLUB INC
DB 5077 PG 1190
PB 5 PG 351
1.025 HA (CADD)

FAIRFIELD GOLF CLUB INC
DB 5077 PG 1190
PB 45 PG 5
0.721 HA (CADD)

RUBY K. POWELL
DB 4338 PG 1511
PB 45 PG 5
0.160 HA (CADD)

FAIRFIELD GOLF CLUB INC
DB 5077 PG 1190
PB 45 PG 5
0.598 HA (CADD)

BL-65
BL-PINC 56+74.315 =
-L- POC Sta. 63+2.847
6.966m RT

24
NCDOT
DB 4646 PG 307
9.263 HA (TAX MAP)

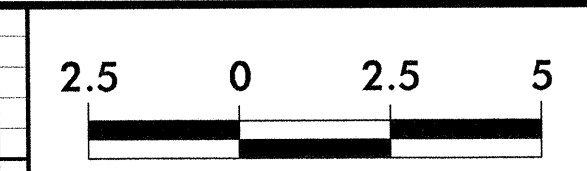
JAMES P. HINKLE, SR.
DB 4167 PG 590
PB 4167 PG 593
2.028 HA (TAX MAP)

-L-
Pis Sta. 61+37.143 Pk Sta. 62+86.616
Es = 0°46'24.6" Δs = 7°31'19.4" (LT)
Ls = 54.000 L = 262.569
LT = 36.000 T = 131.473
ST = 18.000 R = 2,000.000

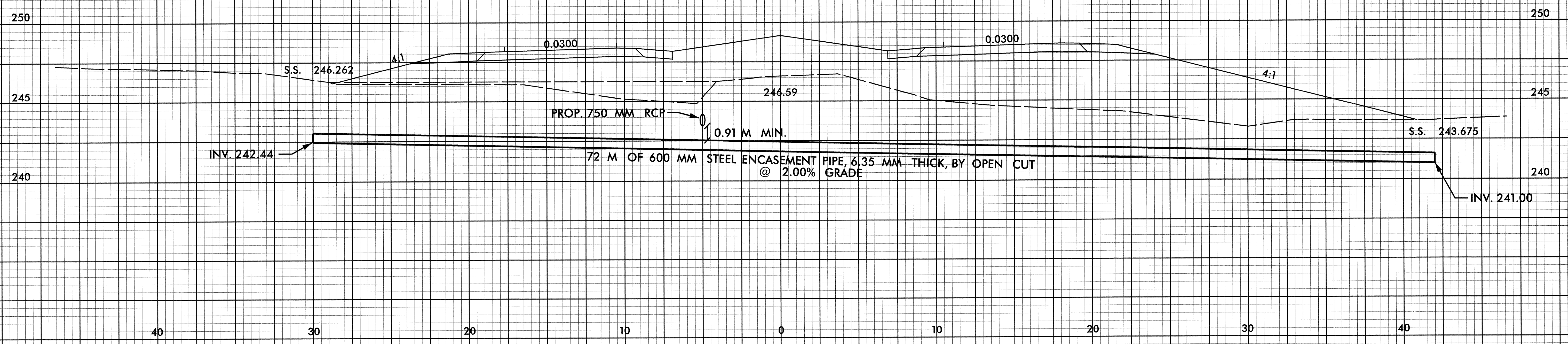
END STATE PROJECT R-06091A -L- STA 61+00.000 =
BEGIN STATE PROJECT R-06091B -L- STA 60+59.109
BEGIN F. A. PROJECT MAF-F-119-1(1)

**PROP. - 72 M OF 600 MM STEEL ENCASEMENT PIPE,
6.35MM THICK, BY OPEN CUT**

ROGER D. QUEEN
DB 4151 PG 2056
3.769 HA (CADD)



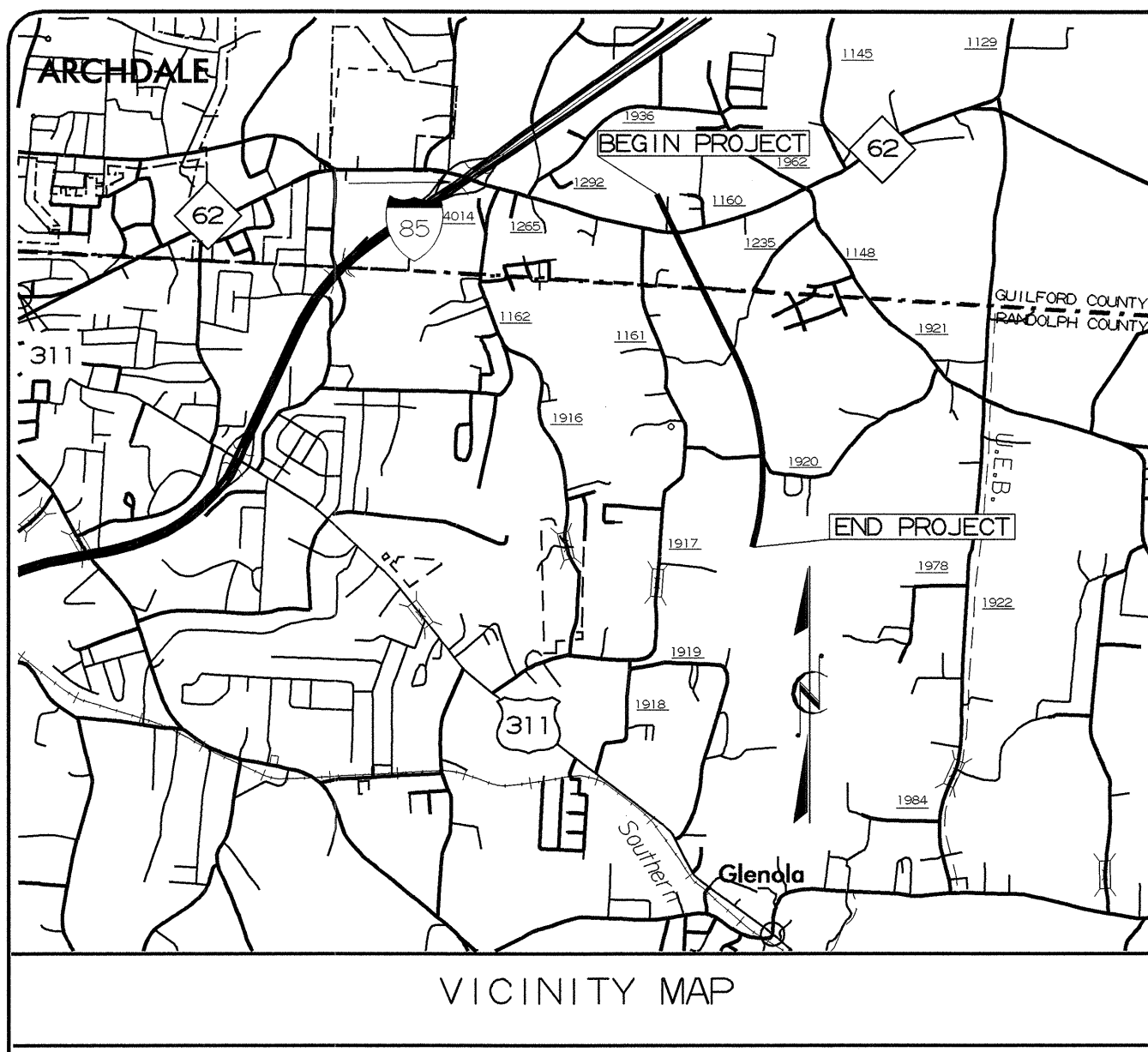
PROJECT REFERENCE NO.	R-06091B	SHEET NO.	UC-3
DESIGNED BY:	DMP		
DRAWN BY:	DMP		
CHECKED BY:	DMP		
APPROVED BY:			
REVISED:		NORTH CAROLINA DEPARTMENT OF TRANSPORTATION PROJECT SERVICES UNIT PHONE: (919) 250-4128 FAX: (919) 250-4119	
			UTILITY CONSTRUCTION PLANS ONLY



9/09/99

CONTRACT: C201225

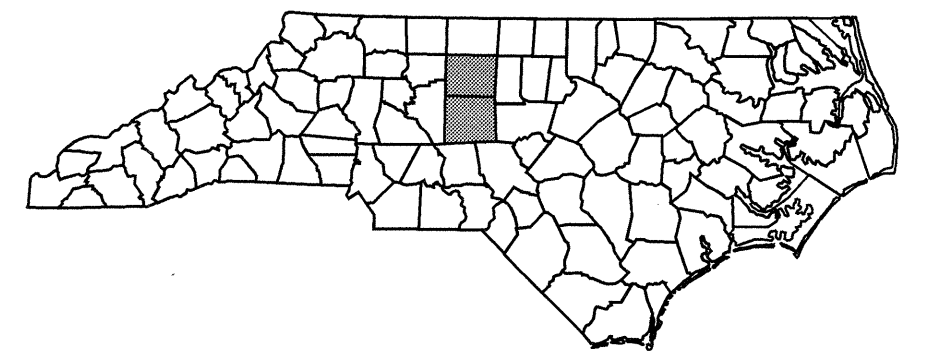
TIP R-06091B



STATE OF NORTH CAROLINA
DIVISION OF HIGHWAYS

METRIC
ALL DIMENSIONS IN THESE PLANS ARE IN METERS AND/OR MILLIMETERS UNLESS OTHERWISE SHOWN

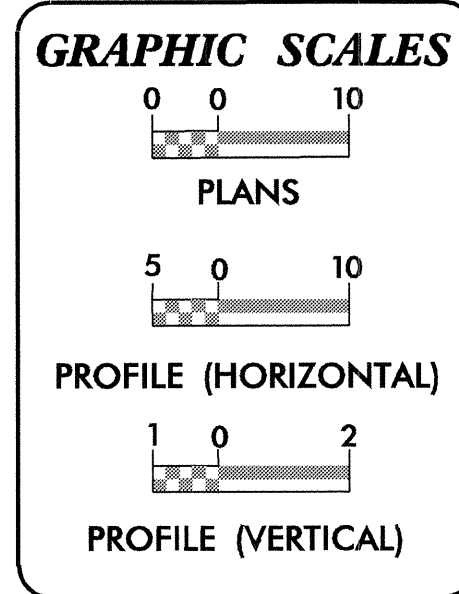
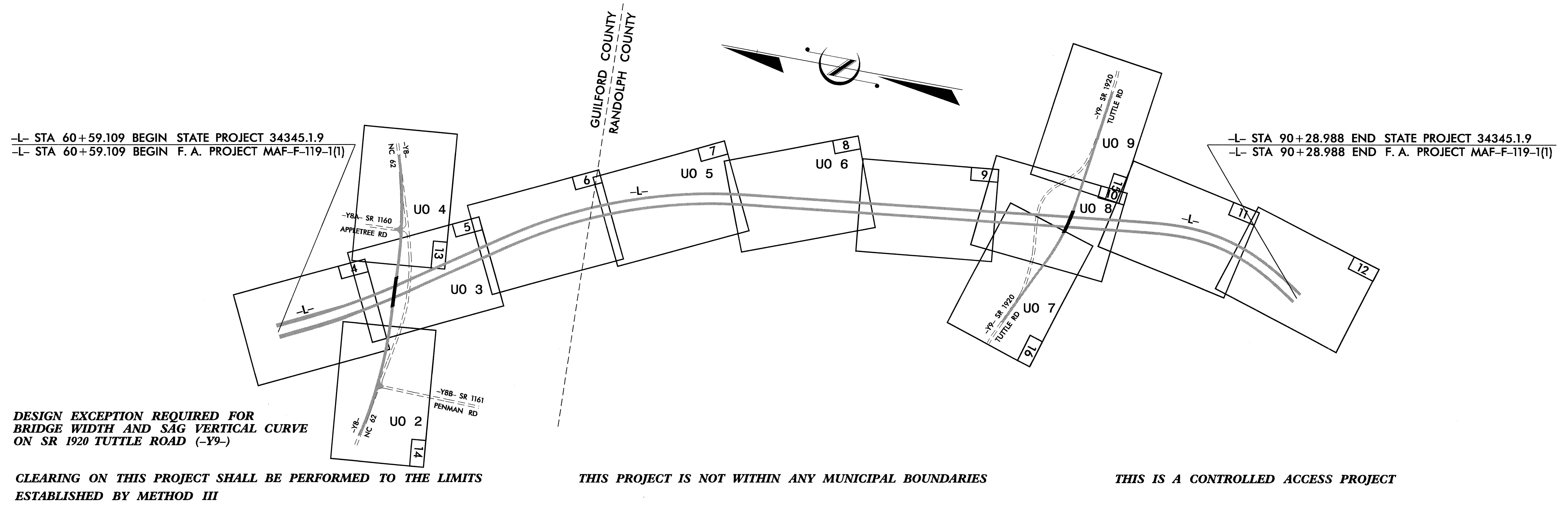
T.I.P. NO.	SHEET NO.
R-06091B	UO-1



UTILITY BY OTHERS PLANS
GUILFORD - RANDOLPH COUNTIES

LOCATION: US 311 (HIGH POINT EAST BELT) FROM I-85 TO SOUTH OF SR 1920 (TUTTLE RD.) NORTH OF ARCHDALE

TYPE OF WORK: UTILITIES BY OTHERS



INDEX OF SHEETS

SHEET NO.	DESCRIPTION
UO-1	TITLE SHEET
UO-2 THRU UO-9	UTILITIES BY OTHERS PLAN SHEETS

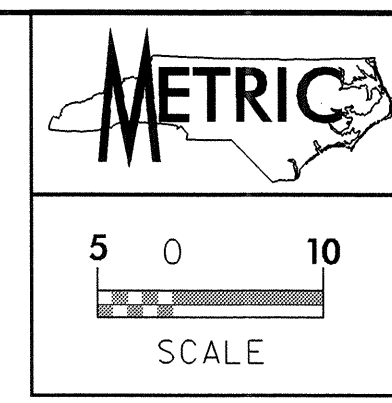
- UTILITY OWNERS ON PROJECT**
- (1) DUKE POWER POWER DISTRIBUTION
 - (2) NORTH STATE COMMUNICATIONS - TELEPHONE
 - (3) MCI - COMMUNICATIONS
 - (4) TIME WARNER - CABLE TV

PREPARED IN THE OFFICE OF:
DIVISION OF HIGHWAYS
PROJECT SERVICES
UTILITY SECTION

1591 MAIL SERVICES CENTER
RALEIGH NC 27699-1591
PHONE (919) 250-4128
FAX (919) 250-4119

Roger Worthington, P.E. UTILITIES SECTION ENGINEER
Ron B. Wilkins, P.E. UTILITIES SQUAD LEADER PROJECT ENGINEER
John A. Nigro, P.E. UTILITIES PROJECT DESIGNER

05-JUN-2006 14:05
r:\utilities\pco\j\06091b_tsh_ut.uol_tsh.dgn

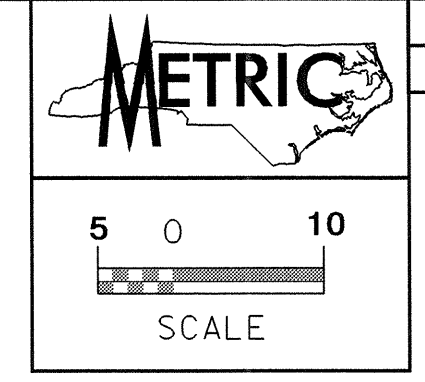


UTILITIES BY OTHERS

NOTE:
ALL PROPOSED UTILITY WORK
SHOWN ON THIS SHEET WILL
BE DONE BY OTHERS

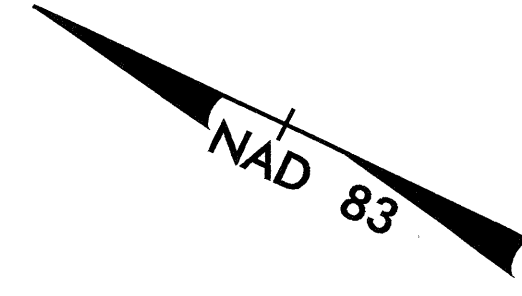


042892
05-JUN-2006 14:16
r:\utilities\14-06091b\ut_14_uo2_psh.dgn



UTILITIES BY OTHERS

NOTE:
ALL PROPOSED UTILITY WORK
SHOWN ON THIS SHEET WILL
BE DONE BY OTHERS



MARGARET W. HANEY
DB 3388 PG 617
11,938 HA (TAX MAP)

JESSE W. TYNDALL
DB 2082 PG 665
0,482 HA (TAX MAP)

JERRY W. QUEEN
DB 5991 PG 1529
1,152 HA (TAX MAP)

RUBY K. POWELL
DB 4338 PG 1511
PB 45 PG 5
0,160 HA (CADD)

NCDOT
DB 4369 PG 1092
0,628 HA (DEED)

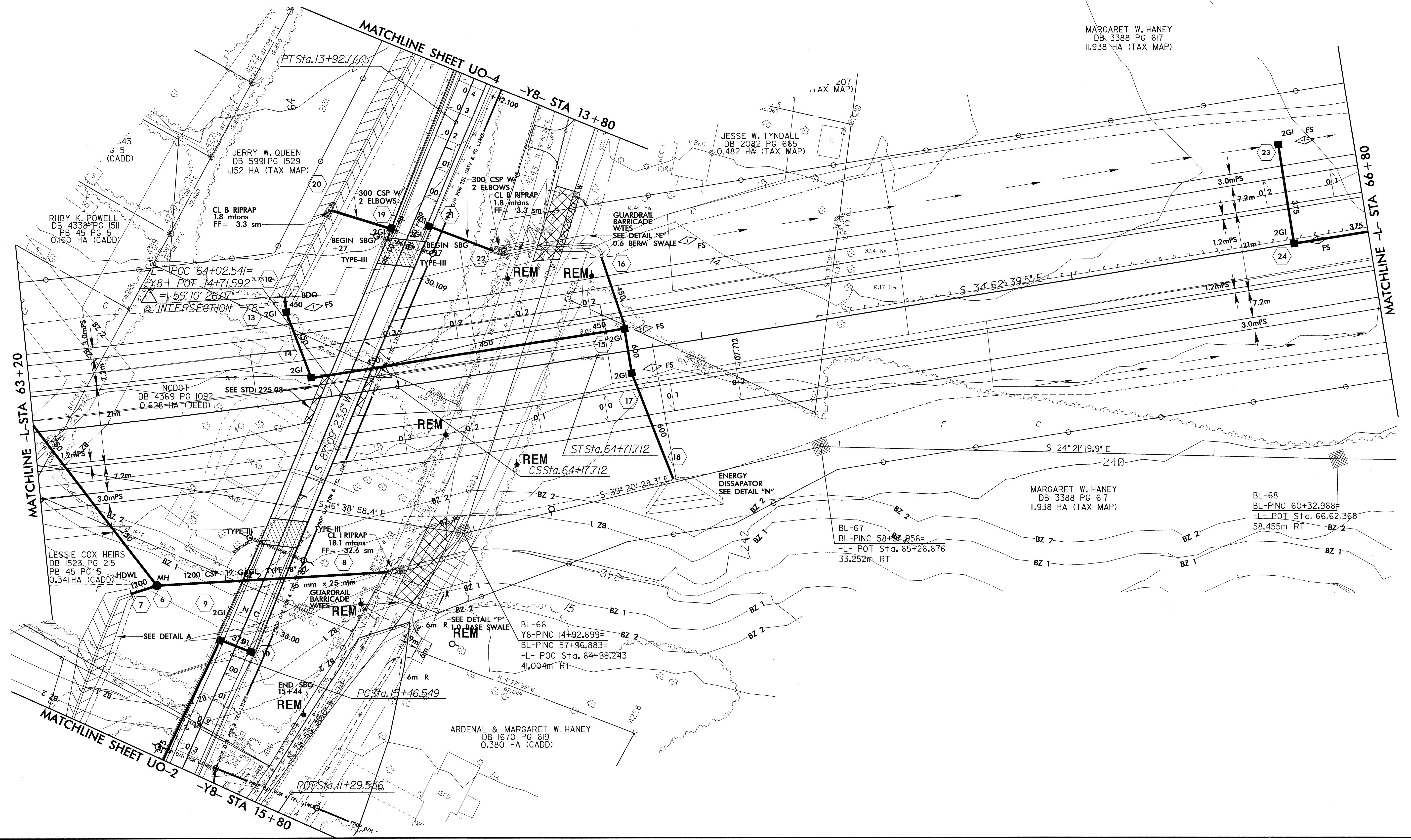
MARGARET W. HANEY
DB 3388 PG 617
11,938 HA (TAX MAP)

BL-68
BL-PINC 60+32.968
-L- POT Sta. 66.62.368
58,455m RT

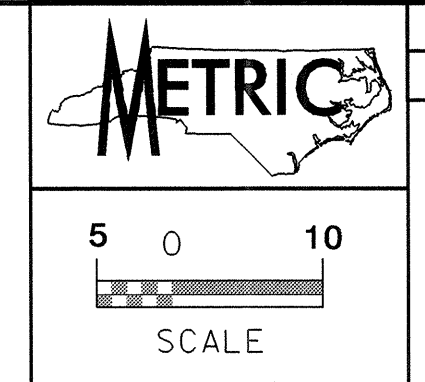
BL-67
BL-PINC 58+31.956
-L- POT Sta. 65+26.676
33,252m RT

BL-66
Y8-PINC 14+92.699
BL-PINC 57+96,883
-L- POC Sta. 64+29,243
41,004m RT

ARDENAL & MARGARET W. HANEY
DB 1670 PG 619
0,380 HA (CADD)



042587
05-MAY-2006 07:07
r:\projects\06091b\utl5_uo3_psh.dgn

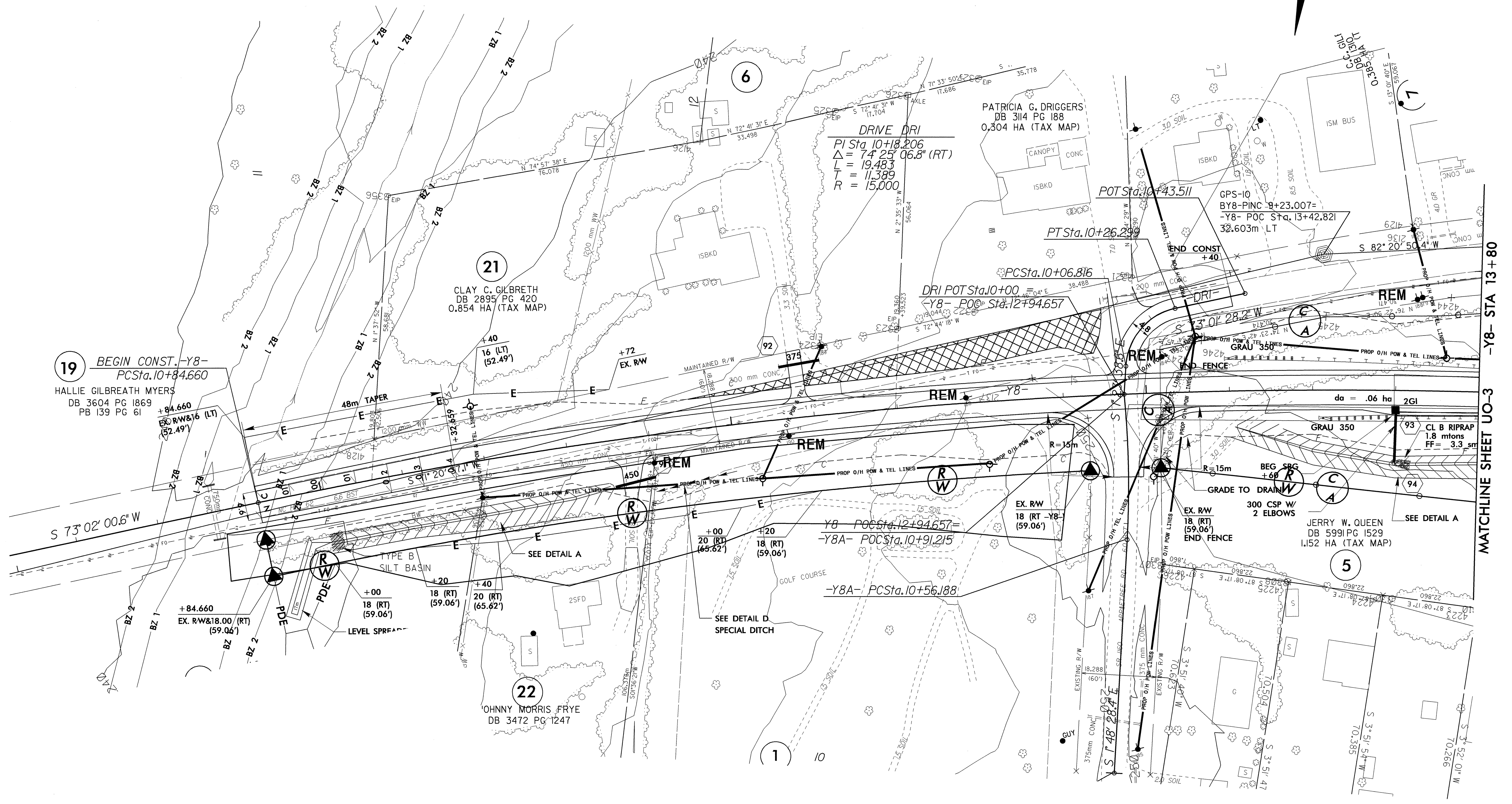


PROJECT REFERENCE NO. R-06091B SHEET NO. UO-4

UTILITIES BY OTHERS

NOTE:
ALL PROPOSED UTILITY WORK
SHOWN ON THIS SHEET WILL
BE DONE BY OTHERS

NAD 83



19 BEGIN CONST. -Y8-
PCSta. 10+84.660
HALLIE GILBREATH MYERS
DB 3604 PG 1869
PB 139 PG 61

21 CLAY C. GILBRETH
DB 2895 PG 420
0.854 HA (TAX MAP)

DRIVE DRI
PI Sta. 10+18.206
 $\Delta = 74^\circ 25' 06.8''$ (RT)
L = 19.483
T = 11.389
R = 15.000

POT Sta. 10+43.511
PT Sta. 10+26.299
PCSta. 10+06.816
DRI POT Sta. 10+00
-Y8- POC Sta. 12+94.657

GPS-10
BY8-PINC -B+23.007=
-Y8- POC Sta. 13+42.821
32.603m LT

Y8 POC Sta. 12+94.657=
-Y8A- POC Sta. 10+91.215
-Y8A- PCSta. 10+56.188

+84.660
EX. RW & 18.00 (RT)
(59.06')

+00
18 (RT)
(59.06')

+40
20 (RT)
(65.62')

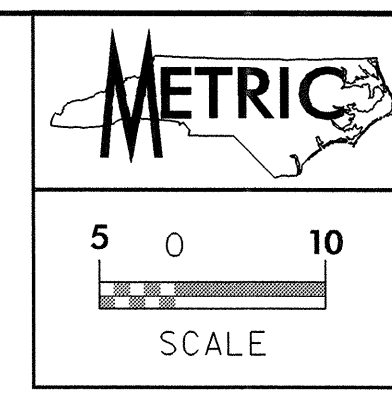
EX. RW
18 (RT) -Y8-
(59.06')

EX. RW
18 (RT)
(59.06')

JERRY W. QUEEN
DB 5991 PG 1529
1.152 HA (TAX MAP)

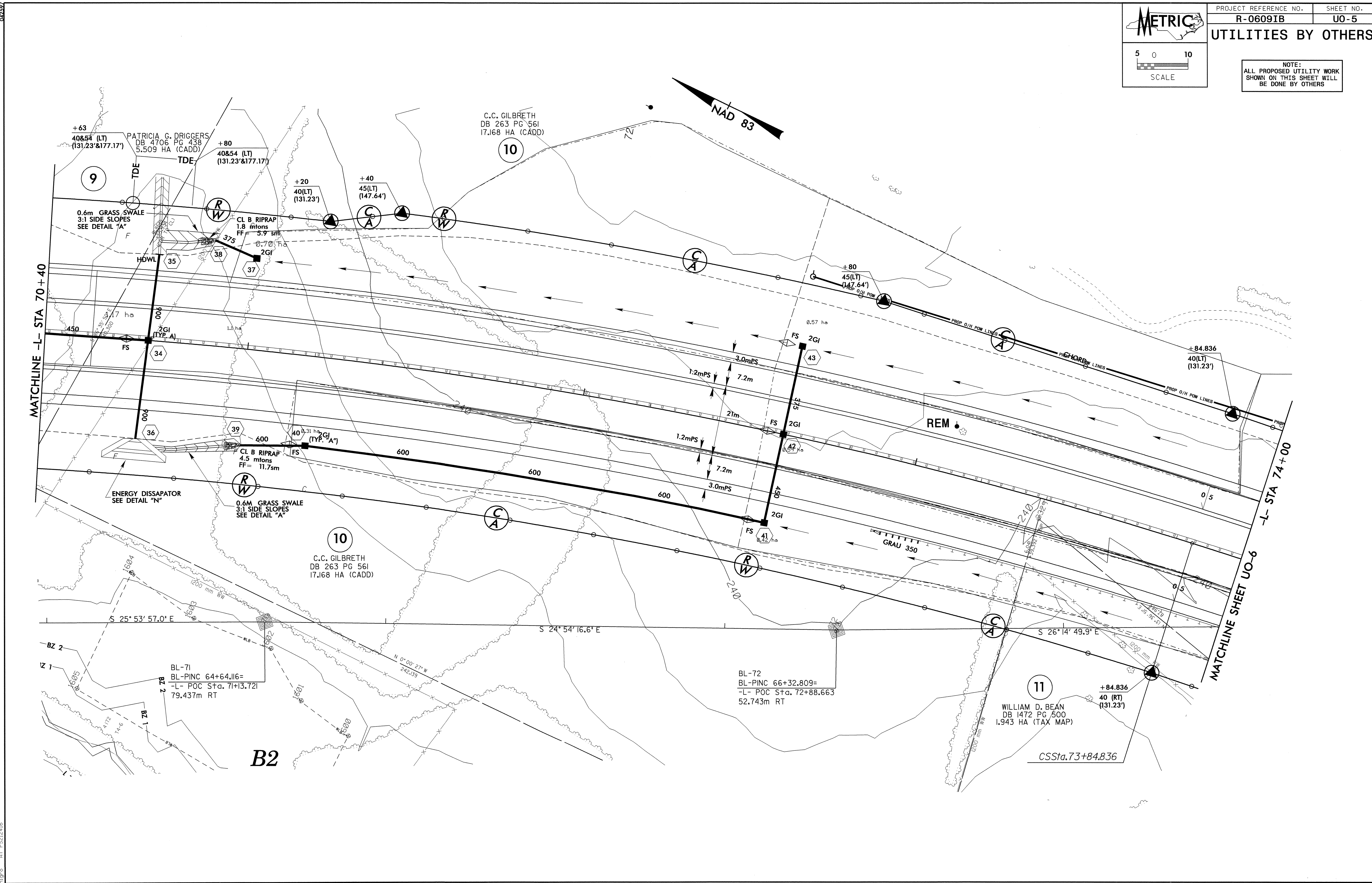
22 OHNNY MORRIS FRYE
DB 3472 PG 1247

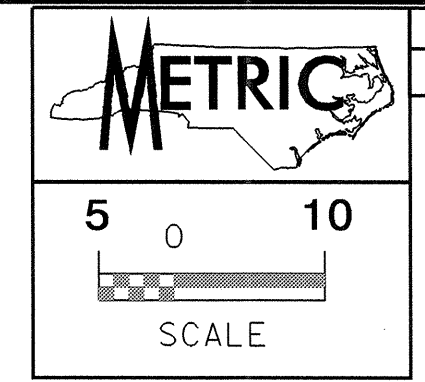
MATCHLINE SHEET UO-3 -Y8- STA 13+80



UTILITIES BY OTHERS

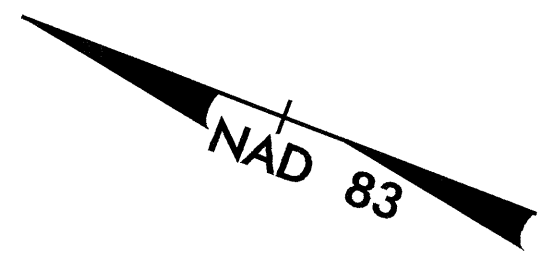
NOTE:
ALL PROPOSED UTILITY WORK
SHOWN ON THIS SHEET WILL
BE DONE BY OTHERS



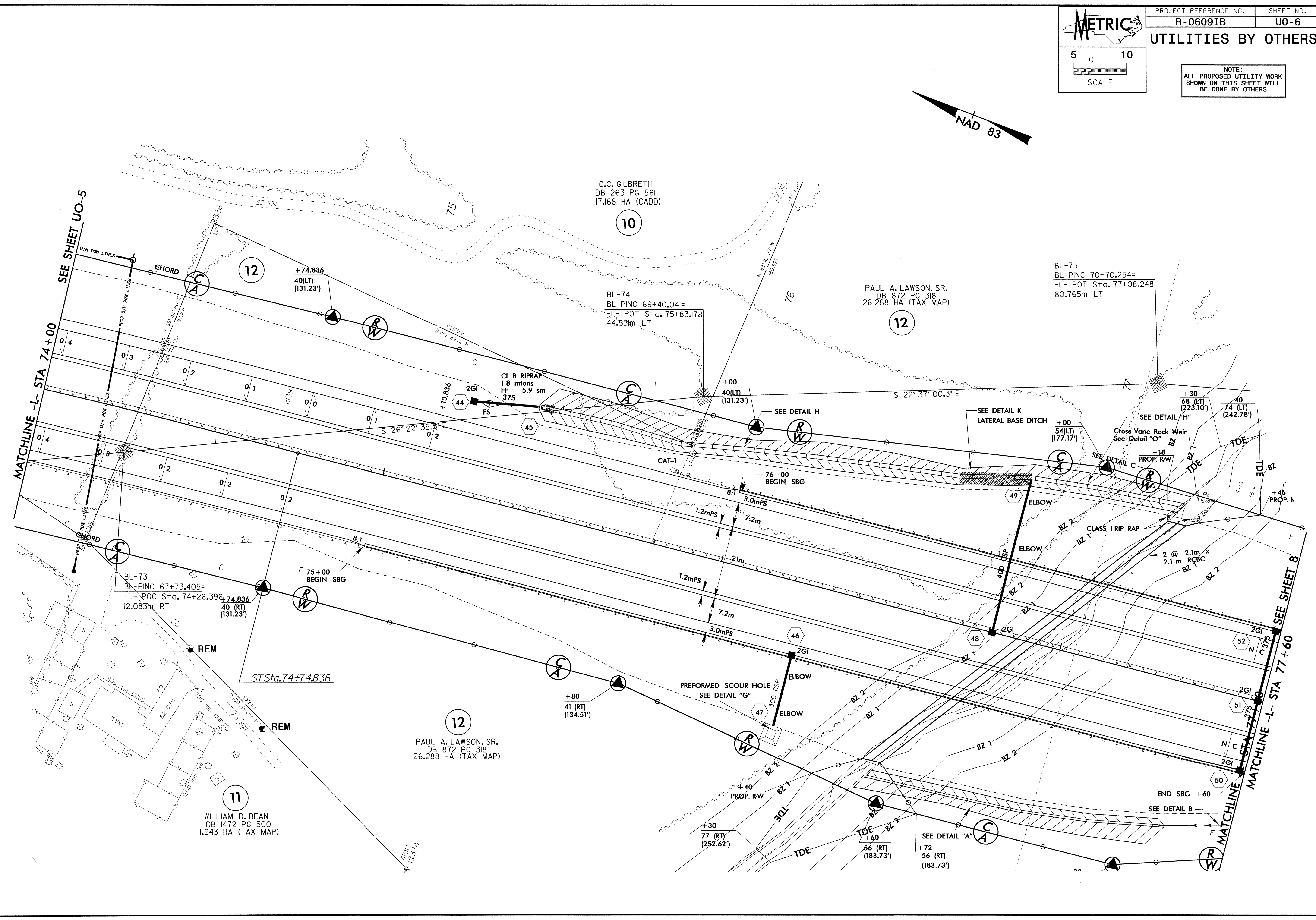


UTILITIES BY OTHERS

NOTE:
ALL PROPOSED UTILITY WORK
SHOWN ON THIS SHEET WILL
BE DONE BY OTHERS



05-MAY-2006 07:09
 r:\utilities\p0609ib\ut.8_uo6_psh.dgn
 21 1521218



C.C. GILBRETH
DB 263 PG 561
17.168 HA (CADD)

PAUL A. LAWSON, SR.
DB 872 PG 318
26.288 HA (TAX MAP)

BL-75
BL-PINC 70+70.254=
-L- POT Sta. 77+08.248
80.765m LT

BL-73
BL-PINC 67+73.405=
-L- POC Sta. 74+26.396, 74.836
12.083m RT
40 (RT)
(131.23')

PAUL A. LAWSON, SR.
DB 872 PG 318
26.288 HA (TAX MAP)

WILLIAM D. BEAN
DB 1472 PG 500
1.943 HA (TAX MAP)

PREFORMED SCOUR HOLE
SEE DETAIL "G"

SEE DETAIL "A"

SEE DETAIL K
LATERAL BASE DITCH

SEE DETAIL H

SEE DETAIL "H"

Cross Vane Rock Weir
See: Detail "O"

SEE DETAIL C

SEE DETAIL "H"

SEE DETAIL "H"

SEE DETAIL "H"

SEE DETAIL "H"

SEE DETAIL "H"

SEE DETAIL "H"

SEE DETAIL "H"

SEE DETAIL "H"

SEE DETAIL "H"

SEE DETAIL "H"

SEE DETAIL "H"

SEE DETAIL "H"

SEE DETAIL "H"

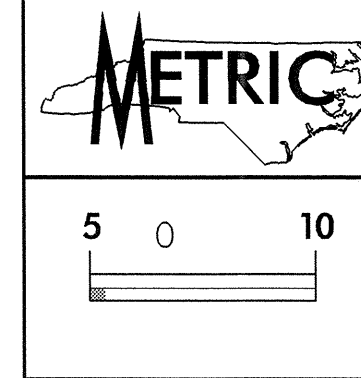
SEE DETAIL "H"

SEE DETAIL "H"

SEE DETAIL "H"

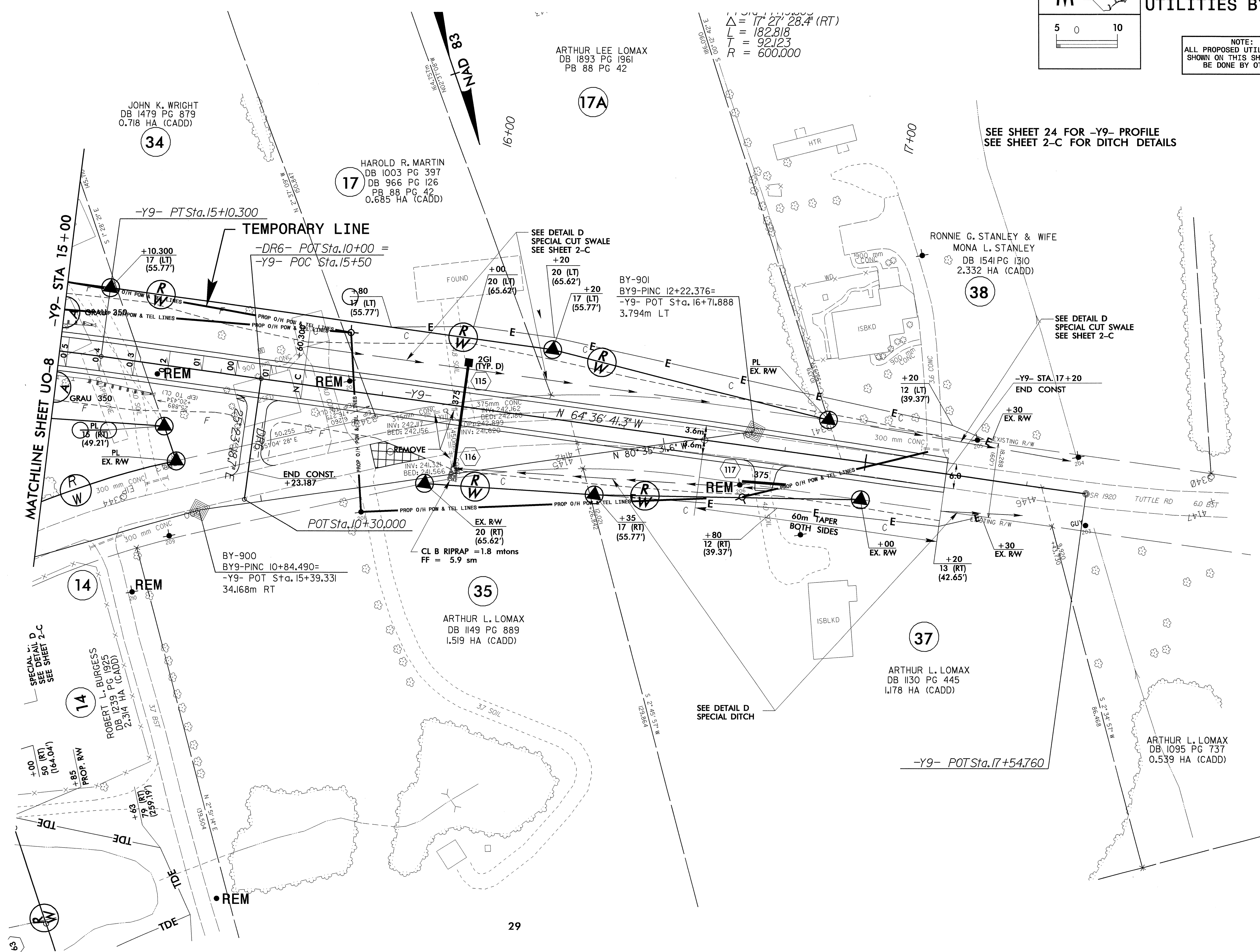
SEE DETAIL "H"

SEE DETAIL "H"



UTILITIES BY OTHERS

NOTE:
ALL PROPOSED UTILITY WORK
SHOWN ON THIS SHEET WILL
BE DONE BY OTHERS



MATCHLINE SHEET UO-8

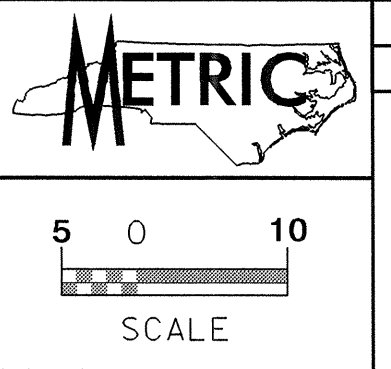
SPECIAL D
SEE DETAIL D
SEE SHEET 2-C

SEE SHEET 24 FOR -Y9- PROFILE
SEE SHEET 2-C FOR DITCH DETAILS

SEE DETAIL D
SPECIAL CUT SWALE
SEE SHEET 2-C

SEE DETAIL D
SPECIAL DITCH

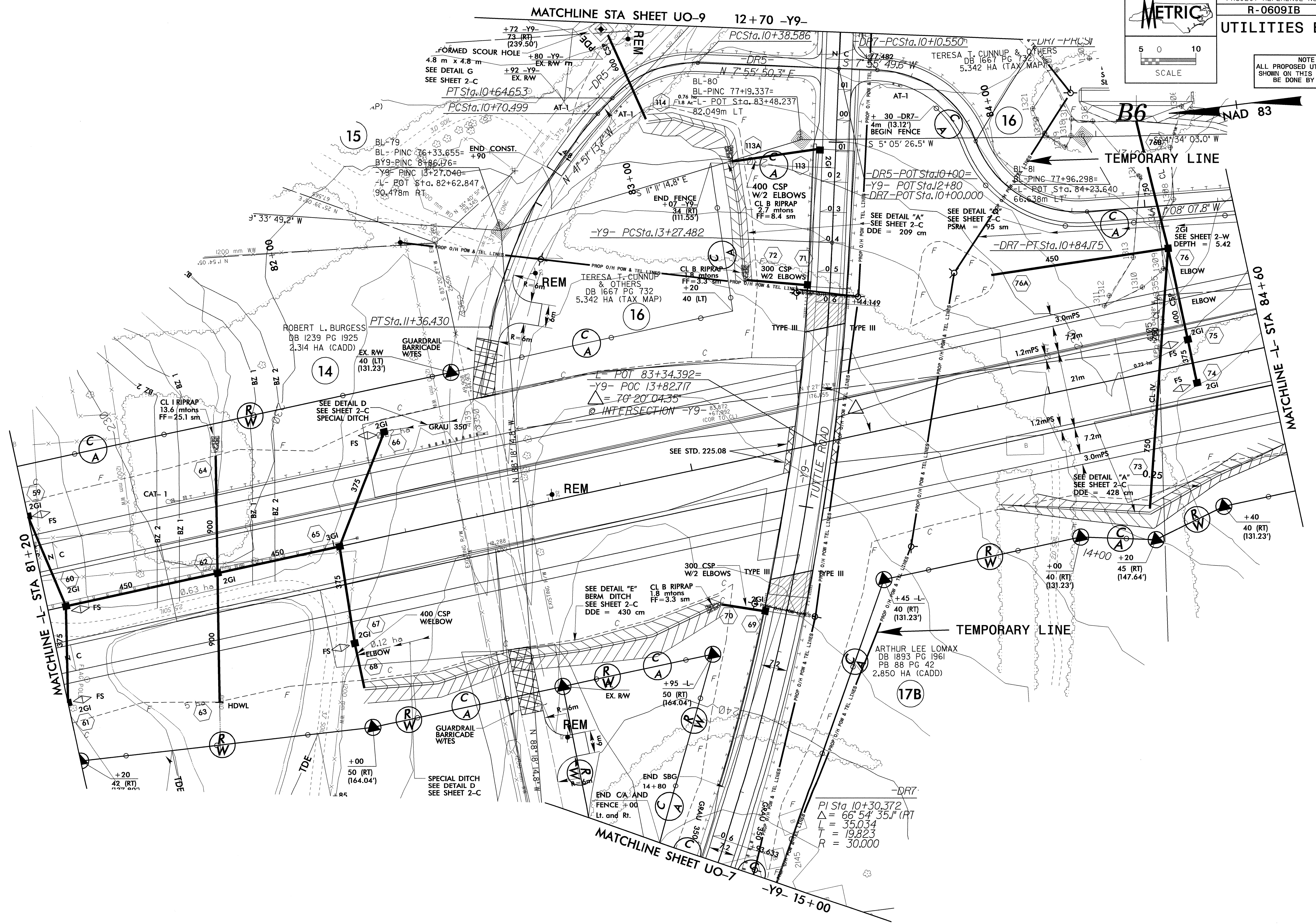
MATCHLINE STA SHEET UO-9 12+70 -Y9-



PROJECT REFERENCE NO.	SHEET NO.
R-06091B	UO-8

UTILITIES BY OTHERS

NOTE:
ALL PROPOSED UTILITY WORK
SHOWN ON THIS SHEET WILL
BE DONE BY OTHERS



MATCHLINE SHEET UO-7 -Y9- 15+00

PI Sta 10+30.372
 $\Delta = 66^\circ 54' 35.1''$ (RT)
 $L = 35.034$
 $T = 19.823$
 $R = 30.000$

