

B-3621

TIP PROJECT:

STATE OF NORTH CAROLINA
DIVISION OF HIGHWAYS

STATE PROJECT REFERENCE NO.	SHEET NO.
B-3621	TCP-1

**PLAN FOR PROPOSED
TRAFFIC CONTROL, MARKING & DELINEATION
BURKE COUNTY**

ROADWAY STANDARD DRAWINGS

THE FOLLOWING ROADWAY STANDARDS AS APPEAR IN "ROADWAY STANDARD DRAWINGS" - ROADWAY DESIGN UNIT-N.C. DEPARTMENT OF TRANSPORTATION-RALEIGH, N.C., DATED JULY 16, 2006 ARE APPLICABLE TO THIS PROJECT AND BY REFERENCE HEREBY ARE CONSIDERED A PART OF THESE PLANS:

STD. NO.	TITLE
1101.03	TEMPORARY ROAD CLOSURES
1110.01	STATIONARY WORK ZONE SIGNS
1145.01	BARRICADES
1205.01	PAVEMENT MARKINGS - LINE TYPES & OFFSETS
1205.02	PAVEMENT MARKINGS - 2 LANE & MULTILANE ROADWAYS
1205.12	PAVEMENT MARKINGS - BRIDGES
1261.01	GUARDRAIL & BARRIER DELINEATOR SPACING
1261.02	GUARDRAIL & BARRIER DELINEATOR TYPES
1262.01	GUARDRAIL END DELINEATION

PROJECT PHASING

- STEP 1: - INSTALL ALL OFF-SITE DETOUR SIGNS AS SHOWN ON TCP-2.
- USING ROADWAY STANDARD DRAWING NO. 1101.03, SHEET 1 OF 9 CLOSE SR 1547 (GARDIOL ST./-L-) BETWEEN STA. 10+00 +/- -L- AND STA. 18+50 +/- -L- (SEE TCP-2).
- STEP 2: - REMOVE THE EXISTING STRUCTURE AND CONSTRUCT THE PROPOSED STRUCTURE AND ROADWAY APPROACHES UP TO AND INCLUDING THE FINAL LAYER OF SURFACE COURSE. (SEE CONSTRUCTION PLANS)
- PLACE FINAL PAVEMENT MARKINGS (PAINT).
- STEP 3: - REMOVE ALL TYPE III BARRICADES AND ALL DETOUR SIGNING. OPEN SR 1547 (GARDIOL ST.) TO 2-LANE, 2-WAY TRAFFIC.

PAVEMENT MARKING SCHEDULE

DESCRIPTION	PAY ITEM	TOTAL QUANTITY
WHITE EDGELINE	PAINT (4")	2500 L.F.
YELLOW DOUBLE CENTERLINE	PAINT (4")	2500 L.F.

INDEX OF SHEETS

SHEET NO.	TITLE
TCP-1	LIST OF APPLICABLE ROADWAY STANDARD DRAWINGS, PAVEMENT MARKING SCHEDULE, INDEX OF SHEETS, PROJECT PHASING, AND GENERAL NOTES
TCP-2	OFF-SITE DETOUR SIGNING, SIGN DESIGN, AND LEGEND

GENERAL NOTES

THE FOLLOWING GENERAL NOTES APPLY AT ALL TIMES FOR THE DURATION OF THE CONSTRUCTION PROJECT, EXCEPT WHEN OTHERWISE NOTED IN THE PLAN, OR DIRECTED BY THE ENGINEER.

- A) ADAPT THE TRAFFIC CONTROL PLANS, WHEN DIRECTED BY THE ENGINEER, TO MEET FIELD CONDITIONS TO PROVIDE SAFE AND EFFICIENT TRAFFIC MOVEMENT. CHANGES MAY BE REQUIRED WHEN PHYSICAL DIMENSIONS IN THE DETAIL DRAWINGS, STANDARD DETAILS AND ROADWAY DETAILS ARE NOT ATTAINABLE, OR RESULT IN DUPLICATE, OR UNDESIRABLE OVERLAPPING OF DEVICES. MODIFICATION MAY INCLUDE: MOVING, SUPPLEMENTING, COVERING OR REMOVAL OF DEVICES.

TRAFFIC PATTERN ALTERATIONS

- B) NOTIFY THE ENGINEER 21 CALANDER DAYS PRIOR TO ANY TRAFFIC PATTERN ALTERATIONS.

SIGNING

- C) PROVIDE DETOUR SIGNING OFF THE PROJECT LIMITS.
- D) COVER OR REMOVE ALL DETOUR SIGNS WHEN A DETOUR IS NOT IN OPERATION.
- E) ENSURE ALL NECESSARY SIGNING IS IN PLACE PRIOR TO ALTERING ANY TRAFFIC PATTERN.

TRAFFIC CONTROL DEVICES

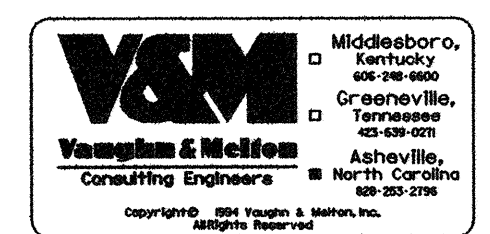
- F) PLACE TYPE III BARRICADES, WITH "ROAD CLOSED" SIGN (RII-2) ATTACHED, OF SUFFICIENT LENGTH TO CLOSE ENTIRE ROADWAY. STAGGER OR OVERLAP BARRICADES TO ALLOW FOR INGRESS OR EGRESS.

PAVEMENT MARKINGS AND MARKERS

- G) INSTALL PAVEMENT MARKINGS AND PAVEMENT MARKERS ON THE FINAL SURFACE AS FOLLOWS:

ROAD NAME	MARKING	MARKER
SR 1547 (GARDIOL ST.)	PAINT	NONE

- H) TIE PROPOSED PAVEMENT MARKING LINES TO EXISTING PAVEMENT MARKING LINES.
- I) PLACE AT LEAST TWO APPLICATIONS OF PAINT PAVEMENT MARKINGS ON THE FINAL WEARING SURFACE ON NEW ASPHALT PAVEMENT. PLACE ADDITIONAL APPLICATIONS OF PAINT UPON SUFFICIENT DRYING TIME, AS DETERMINED BY THE ENGINEER.
- J) REPLACE ANY PAVEMENT MARKINGS THAT HAVE BEEN DAMAGED BY THE END OF EACH DAY'S OPERATION.



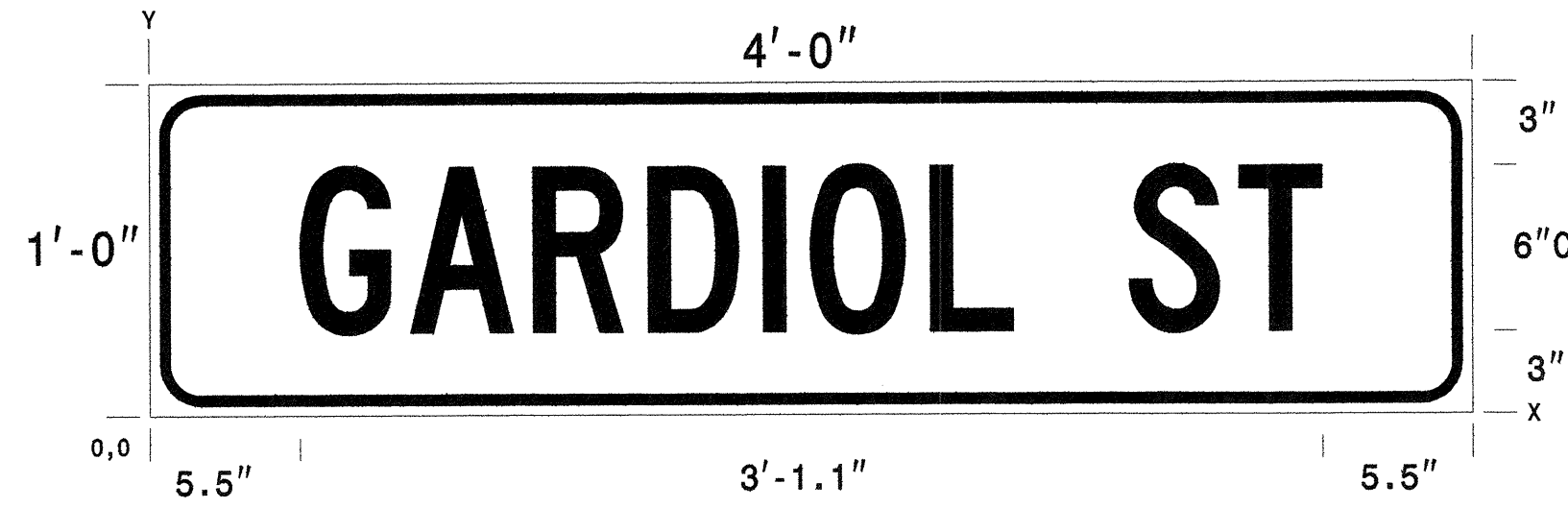
APPROVED: *Jerry A. Carter*
DATE: 11/22/06

SEAL

PLAN PREPARED FOR: N.C.D.O.T. TRAFFIC CONTROL, MARKING & DELINEATION SECTION

JERRY A. CARTER, PE TRAFFIC CONTROL ENGINEER
REECE M. SCHULER, PE TRAFFIC CONTROL PROJECT ENGINEER
AARON C. CARVER, EI TRAFFIC CONTROL PROJECT DESIGN ENGINEER
MIKE QUEEN TRAFFIC CONTROL DESIGN ENGINEER / TECHNICIAN

SIGN DETAIL
SCALE 1:10



DIMENSIONS IN INCHES

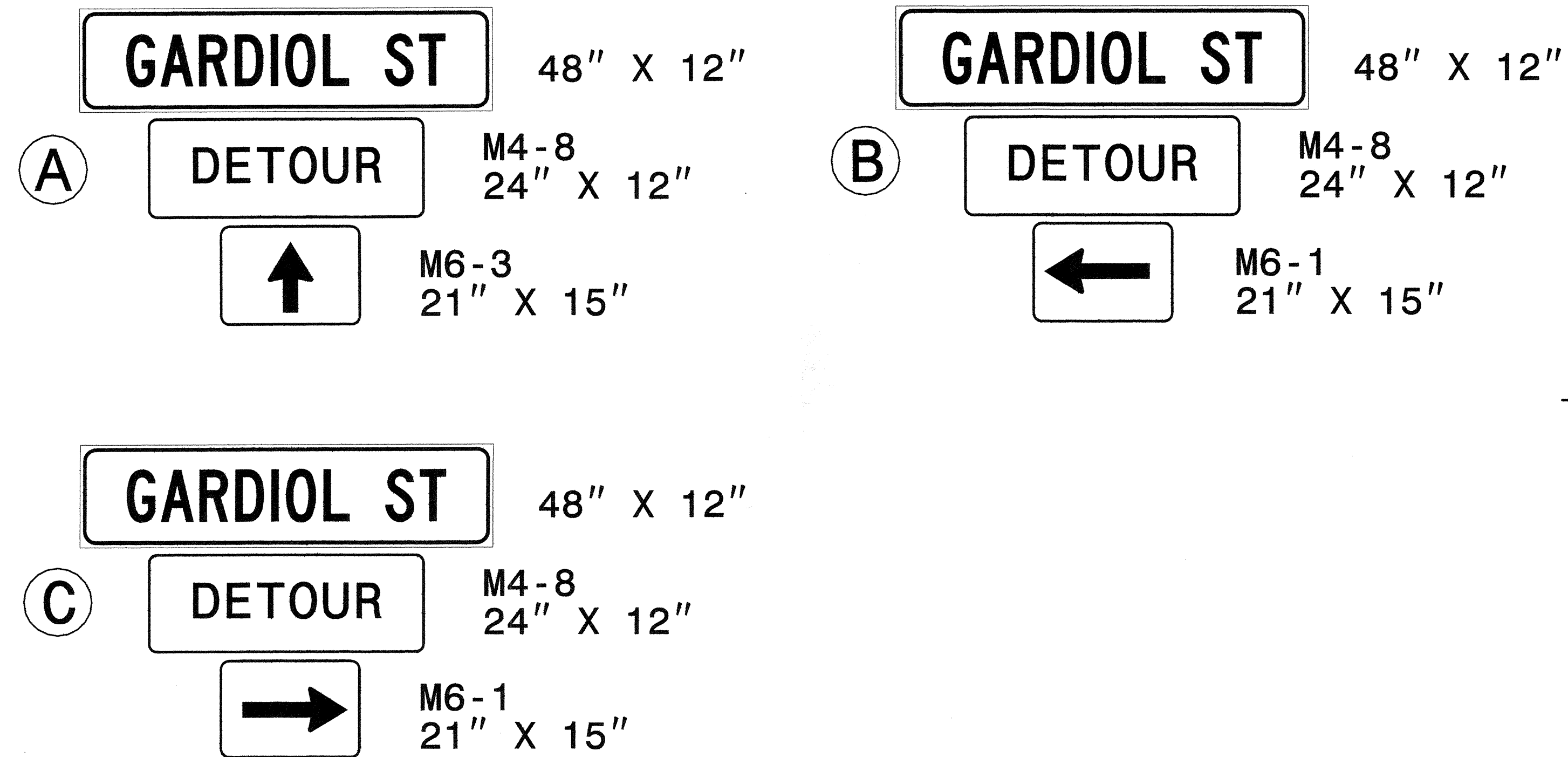
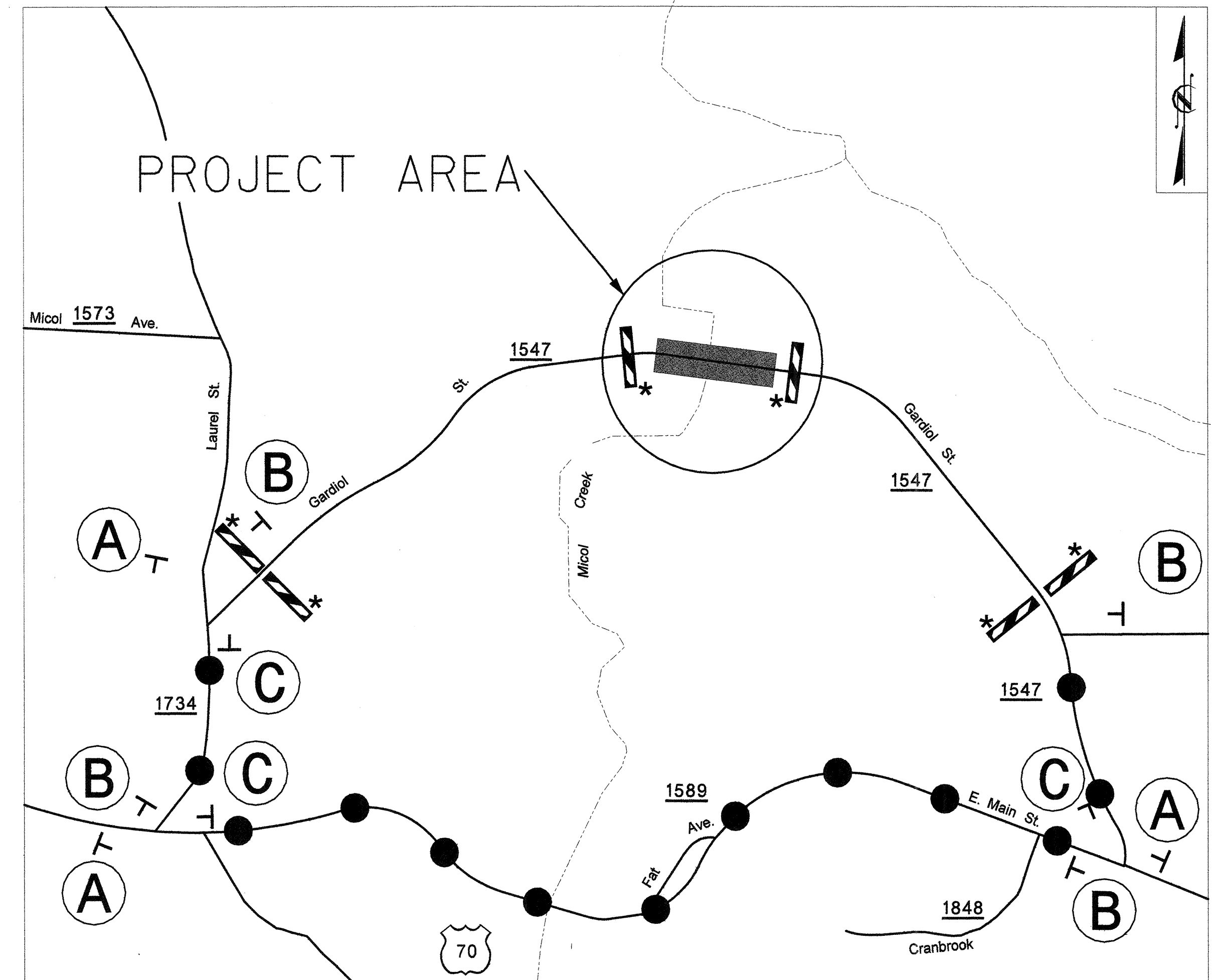
SPACINGS ARE TO START OF NEXT LETTER

Y FONT	LETTER SPACINGS											HT LEN	
3.0	G	A	R	D	I	O	L	S	T				6.0
C	5.5	4.0	4.5	4.2	4.2	1.7	4.3	3.0	4.2	4.0	3.0	5.5	37.1

N. C. DEPARTMENT OF TRANSPORTATION
DIVISION OF HIGHWAYS
TRAFFIC ENGINEERING BRANCH

SIGN NUMBER: SP03017 DESIGN BY: MB.ALLEN DATE: 1/14/03
TYPE: D CHECKED BY: STD. #: 0
QUANTITY: PROJECT ID: B-3621 DIV: 13
WIDTHxHEIGHT: 48.0" x 12" BACKGROUND COLOR: ORANGE
SIGN AREA: 4.00 SQ.FT. COPY COLOR: BLACK
BORDER TYPE: RECESS MAJ COPY SERIES: C
RECESS: 0.375" MAT'L: TO BE DETERMINED
BORDER WIDTH: 0.375" TO BE MOUNTED WITH DETOUR SIGNING
RADI: 1.5"

NOTES:
-Legend and border shall be direct applied non-reflective sheeting.
-Background shall be Type I reflective sheeting.



LEGEND

- GENERAL**
- NORTH ARROW
 - WORK AREA
 - DETOUR ROUTE
- TRAFFIC CONTROL DEVICES**
- TYPE III BARRICADE
 - STATIONARY SIGN

NOTE: ALL DETOUR SIGNS ARE BLACK ON ORANGE UNLESS OTHERWISE NOTED
* SEE ROADWAY STANDARD DRAWING NO. 1101.03, SHEET 1 OF 9 FOR TYPE III BARRICADE LOCATIONS, ADDITIONAL SIGNS MOUNTED ON TYPE III BARRICADES, AND ADDITIONAL WORK ZONE SIGNS.

APPROVED: *[Signature]* DATE: 8/29/03

OFF-SITE DETOUR SIGNING

SCALE: NONE		REVISIONS
DATE: JAN 2003		
DWG. BY: RMS		
DESIGN BY: RMS		
REVIEWED BY: LDB		CADD FILE: B3621TCP02.DGN

V&M Vaughan & Melton Consulting Engineers
Middlesboro, Kentucky 40349-2400
Oprandoville, Tennessee 37137-0001
Asheville, North Carolina 28801-0001

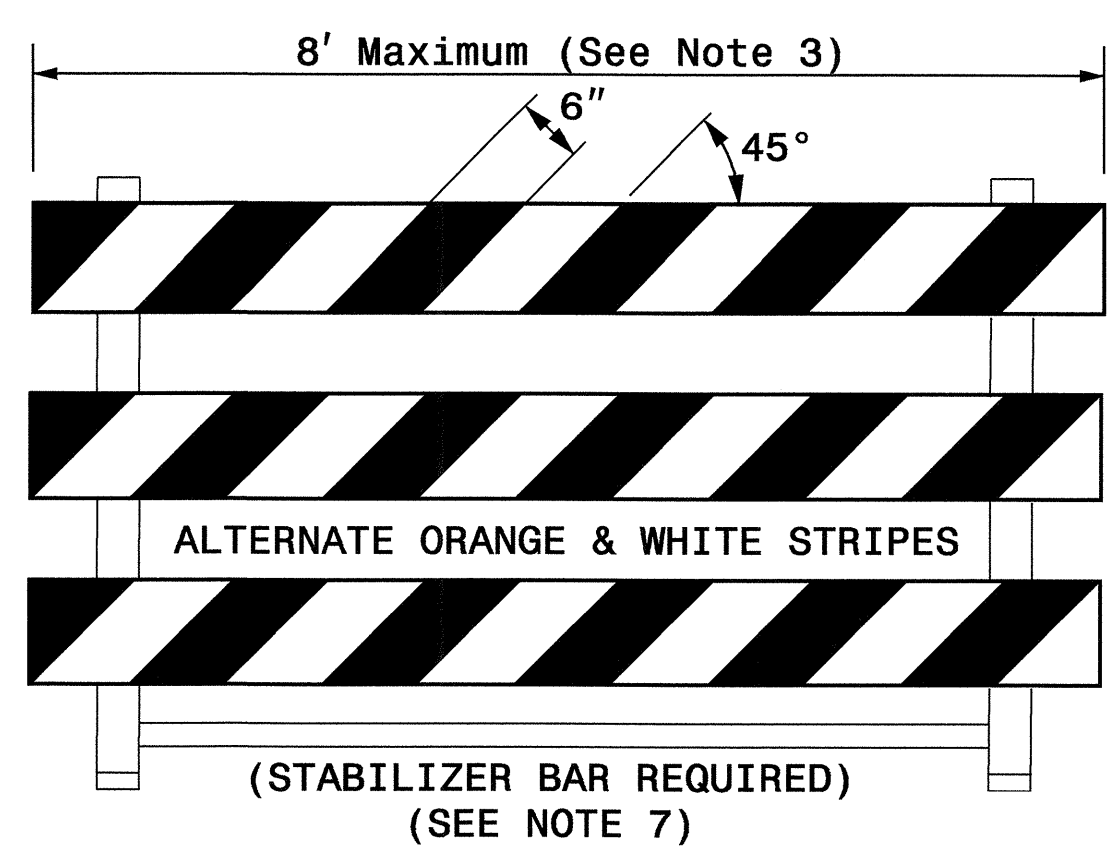
STATE OF NORTH CAROLINA
 DEPT. OF TRANSPORTATION
 DIVISION OF HIGHWAYS
 RALEIGH, N.C.

1-05

ENGLISH STANDARD DRAWING FOR
BARRICADES
 TYPE-III

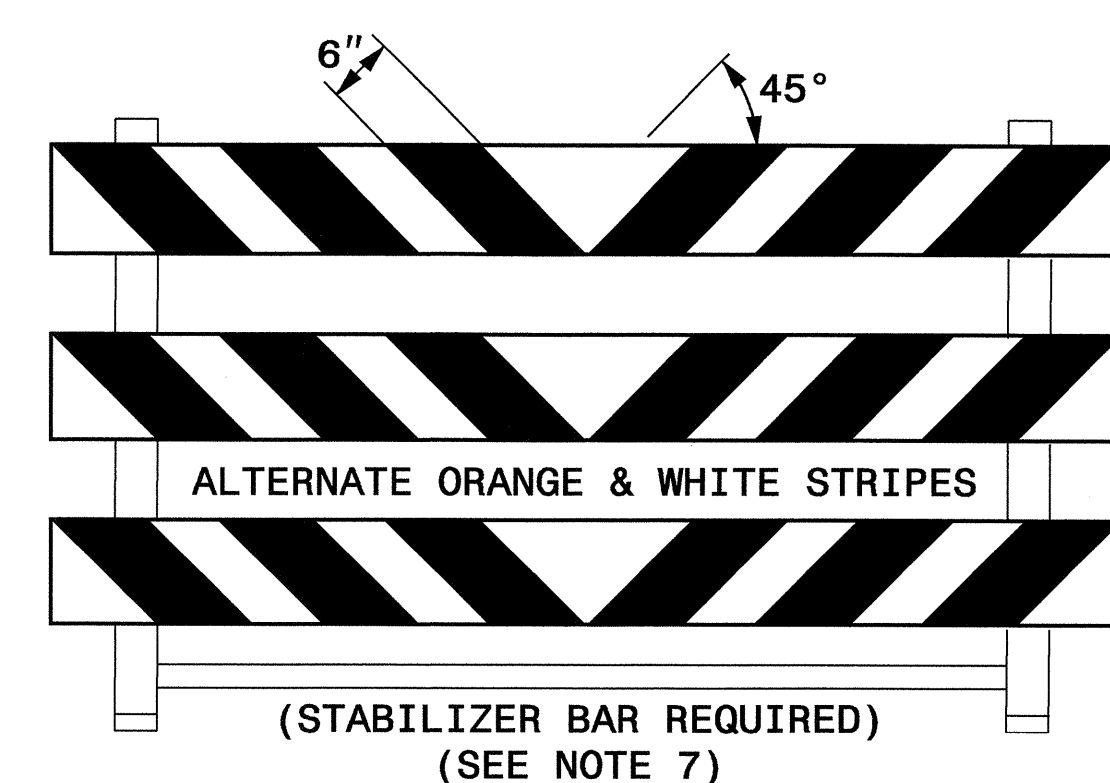
SHEET 1 OF 1
1145D01

TYPE III BARRICADE



TYPE III BARRICADE

END-OF-ROADWAY APPLICATIONS



GENERAL NOTES

- 1) HORIZONTAL RAILS FOR TYPE-III BARRICADES MAY BE HOLLOW/CORRUGATED EXTRUDED RIGID POLYOLEFIN, HIGH DENSITY POLYETHYLENE, OR OTHER NCDOT APPROVED RAILS. BARRICADE RAILS OF FRANGIBLE PLASTICS SUCH AS PVC MAY NOT BE USED. IF APPROVED PLASTIC TYPE RAILS ARE USED, THEY MUST BE FLAME TREATED BY THE MANUFACTURER SO THAT REFLECTIVE SHEETING MAY ADHERE PROPERLY.
- 2) BARRICADES AND BARRICADE RAILS ARE APPROVED AS A SINGLE UNIT.
- 3) BARRICADE SHALL BE LIMITED TO A MAXIMUM LENGTH OF 8 FT UNLESS NCHRP 350 CRASH TESTED AND NCDOT APPROVED.
- 4) ONLY NCDOT APPROVED COMPOSITE AND ROLL-UP SIGNS MAY BE MOUNTED ON THE BARRICADE.
- 5) SIGNS MOUNTED ON BARRICADES SHOULD NOT COVER MORE THAN 50 PERCENT OF THE TOP TWO RAILS OR 33 PERCENT OF THE TOTAL AREA OF THE THREE RAILS.
- 6) USE TYPE VII, VIII OR IX SHEETING ON BOTH SIDES OF THE RAILS.
- 7) BARRICADE MUST BE NCHRP 350 AND NCDOT APPROVED WITH STABILIZER BAR OR ADEQUATE LATERAL BRACING.
- 8) ASSEMBLY OF THE GENERIC BARRICADES MUST BE SELF CERTIFIED BY THE ASSEMBLER.
- 9) BARRICADES USED TO CLOSE A ROADWAY SHALL EXTEND ACROSS THE ENTIRE ROADWAY. WHERE LOCAL TRAFFIC MUST BE MAINTAINED, THEY MAY BE PLACED IN A STAGGERED PATTERN.
- 10) STRIPES ON WORK ZONE BARRICADE RAILS SHALL BE ALTERNATE ORANGE AND WHITE RETROREFLECTIVE STRIPES, SLOPED DOWNWARD TOWARDS THE SIDE WHICH TRAFFIC IS TO PASS OR TURN IN DETOURING. WHERE NO TURNS ARE INTENDED, THE STRIPES SHOULD SLOPE DOWNWARD TOWARD THE CENTER OF THE BARRICADE OR BARRICADES. USE RED AND WHITE STRIPES FOR PERMANENT BARRICADES.
- 11) SEE APPROVED PRODUCTS LIST FOR MANUFACTURERS OF APPROVED BARRICADES.
- 12) PLACE MANUFACTURER'S NAME AND FEDERAL HIGHWAY ADMINISTRATION'S NCHRP 350 APPROVAL LETTER NUMBER ON BARRICADE.
- 13) USE SANDBAGS PLACED ON THE LOWER PART OF THE FRAME FOR BALLASTING. DO NOT PLACE SANDBAGS ON TOP OF A STRIPED RAIL. DO NOT BALLAST BARRICADES BY HEAVY OBJECTS SUCH AS ROCKS, CHUNKS OF CONCRETE OR OTHER ITEMS THAT WOULD CAUSE DAMAGE IF THE BARRICADE IS STRUCK BY A VEHICLE.

STATE OF NORTH CAROLINA
 DEPT. OF TRANSPORTATION
 DIVISION OF HIGHWAYS
 RALEIGH, N.C.

1-05

ENGLISH STANDARD DRAWING FOR
BARRICADES
 TYPE-III

SHEET 1 OF 1
1145D01

04-JAN-2005 10:40
 D:\UserData\Don_Parker\Projects\B_3621\Barricades\Typell.dgn
 ddparker AT TETC206426

APPROVED: <i>J.W. Woolard</i> DATE: 1/04/05	REPLACEMENT DETAIL FOR RSD 1145.01	
	SCALE: NONE	REVISIONS
	DATE: 11/04	
	DWG. BY: MMM	
	DESIGN BY: MMM	
REVIEWED BY: MMM		