

STATE OF NORTH CAROLINA
DIVISION OF HIGHWAYS



STATE PROJECT REFERENCE NO.	SHEET NO.
B - 1381	TCP-1

**PLAN FOR PROPOSED
TRAFFIC CONTROL, MARKING & DELINEATION**

SAMPSON COUNTY

GENERAL NOTES

B-1381

ROADWAY STANDARD DRAWINGS

THE FOLLOWING ROADWAY STANDARDS AS APPEAR IN "ROADWAY STANDARD DRAWINGS"-PROJECT SERVICES UNIT-N.C. DEPARTMENT OF TRANSPORTATION-RALEIGH, N.C., DATED JANUARY 2002 ARE APPLICABLE TO THIS PROJECT AND BY REFERENCE HEREBY ARE CONSIDERED A PART OF THESE PLANS:

STD. NO.	TITLE
1101.03	TEMPORARY ROAD CLOSURES
1101.05	WORK ZONE VEHICLE ACCESSES
1110.01	STATIONARY WORK ZONE SIGNS
1205.01	PAVEMENT MARKINGS - LINE TYPES & OFFSETS
1205.02	PAVEMENT MARKINGS - 2 LANE & MULTILANE ROADWAYS
1205.12	PAVEMENT MARKINGS - BRIDGES
1250.01	PAVEMENT MARKER SPACING
1251.01	RAISED PAVEMENT MARKERS (TEMPORARY & PERMANENT)
1261.01	GUARDRAIL & BARRIER DELINEATOR SPACING
1261.02	GUARDRAIL & BARRIER DELINEATOR TYPES
1262.01	GUARDRAIL END DELINEATION

INDEX OF SHEETS

SHEET NO.	TITLE
TCP-1	LIST OF APPLICABLE ROADWAY STANDARD DRAWINGS, INDEX OF SHEETS, PAVEMENT MARKING SCHEDULE, PHASING & GENERAL NOTES
TCP-2	PLAN VIEW
TCP-3	DRUM
TCP-4	BARRICADE

ADAPT THE TRAFFIC CONTROL PLANS, WHEN DIRECTED BY THE ENGINEER, TO MEET FIELD CONDITIONS TO PROVIDE SAFE AND EFFICIENT TRAFFIC MOVEMENT. CHANGES MAY BE REQUIRED WHEN PHYSICAL DIMENSIONS IN THE DETAIL DRAWINGS, STANDARD DETAILS AND ROADWAY DETAILS ARE NOT ATTAINABLE, OR RESULT IN DUPLICATE, OR UNDESIRED OVERLAPPING OF DEVICES. MODIFICATION MAY INCLUDE: MOVING, SUPPLEMENTING, COVERING OR REMOVAL OF DEVICES.

THE FOLLOWING GENERAL NOTES APPLY AT ALL TIMES FOR THE DURATION OF THE CONSTRUCTION PROJECT, EXCEPT WHEN OTHERWISE NOTED IN THE PLAN, OR DIRECTED BY THE ENGINEER.

TRAFFIC PATTERN ALTERATIONS

A) NOTIFY THE ENGINEER TWENTY ONE (21) CALENDAR DAYS PRIOR TO ANY TRAFFIC PATTERN ALTERATION.

SIGNING

- B) STATE FORCES WILL BE RESPONSIBLE FOR PERMANENT SIGNING.
- C) STATE FORCES WILL BE RESPONSIBLE FOR DETOUR SIGNING OFF THE PROJECT LIMITS.
- D) STATE FORCES WILL COVER OR REMOVE ALL DETOUR SIGNS OFF THE PROJECT LIMITS WHEN A DETOUR IS NOT IN OPERATION.
- E) ENSURE ALL NECESSARY SIGNING IS IN PLACE PRIOR TO ALTERING ANY TRAFFIC PATTERN.

TRAFFIC CONTROL DEVICES

F) PLACE TYPE III BARRICADES, WITH "ROAD CLOSED" SIGN R11-2 ATTACHED, OF SUFFICIENT LENGTH TO CLOSE ENTIRE ROADWAY. STAGGER OR OVERLAP BARRICADES TO ALLOW FOR INGRESS OR EGRESS.

PAVEMENT MARKINGS AND MARKERS

- G) INSTALL PAVEMENT MARKINGS AND PAVEMENT MARKERS ON THE FINAL SURFACE AS FOLLOWS:

ROAD NAME	MARKING	MARKER
1. NC 411	PAINT	PERMANENT RAISED
- H) PLACE AT LEAST TWO APPLICATIONS OF PAINT PAVEMENT MARKINGS ON THE FINAL WEARING SURFACE ON NEW ASPHALT PAVEMENT. PLACE ADDITIONAL APPLICATIONS OF PAINT UPON SUFFICIENT DRYING TIME, AS DETERMINED BY THE ENGINEER.
- I) TIE PROPOSED PAVEMENT MARKING LINES TO EXISTING PAVEMENT MARKING LINES.

PHASING

PHASE I

NOTE: STATE FORCES WILL FURNISH AND INSTALL ALL DETOUR ROUTE SIGNAGE PRIOR TO THE CONTRACTOR CLOSING THE ROADWAY TO TRAFFIC.

STEP 1:
THE CONTRACTOR SHALL FURNISH AND INSTALL TYPE III BARRICADES AND APPROPRIATE SIGNAGE PER SHEET TCP-2 AND RSD 1101.03 SHEET 1 OF 9.

STEP 2:
CONTRACTOR SHALL PLACE TRAFFIC ONTO THE DETOUR THEN OBLITERATE THE EXISTING STRUCTURE AND CONSTRUCT THE PROPOSED STRUCTURE AND THE APPROACHES AS SHOWN IN THE CONSTRUCTION PLANS.

NOTE: THE CONTRACTOR SHALL PLACE DRUMS AS REQUIRED TO MAINTAIN ACCESS TO DRIVEWAYS DURING CONSTRUCTION.

STEP 3:
THE CONTRACTOR SHALL FURNISH AND INSTALL ALL PAVEMENT MARKINGS (PAINT) AND PAVEMENT MARKERS (PERMANENT RAISED) ON THE FINAL SURFACE COURSE AND DELINEATION ON THE GUARDRAIL AND THE STRUCTURE.

STEP 4:
AFTER CONSTRUCTION IS COMPLETE, THE CONTRACTOR SHALL OPEN THE ROADWAY TO TRAFFIC.

PAVEMENT MARKING SCHEDULE

SYMBOL	DESCRIPTION	PAY ITEM QUANTITY BREAKDOWN		TOTAL QUANTITY
FINAL PAVEMENT MARKINGS PAINT (100MM)				
PA	WHITE EDGELINE	680	M	
PI	YELLOW DOUBLE CENTER	680	M	
		TOTAL		1360 M
MARKERS PERMANENT RAISED PAVEMENT MARKERS				
MA	YELLOW & YELLOW	8	EA	
		TOTAL		8 EA

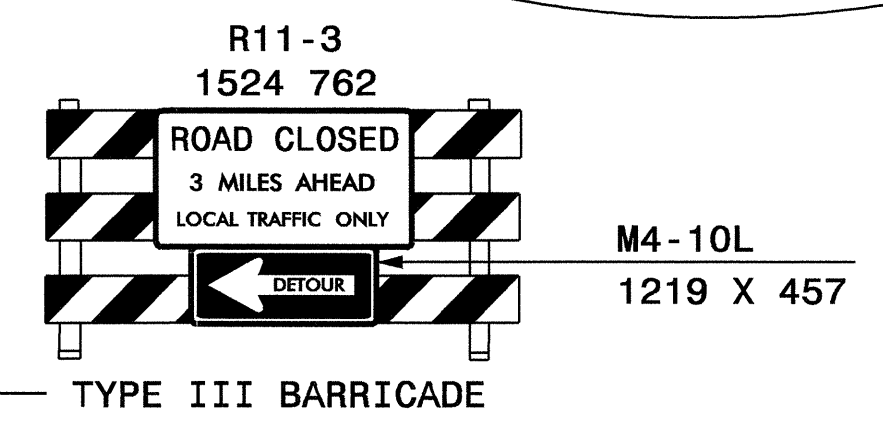
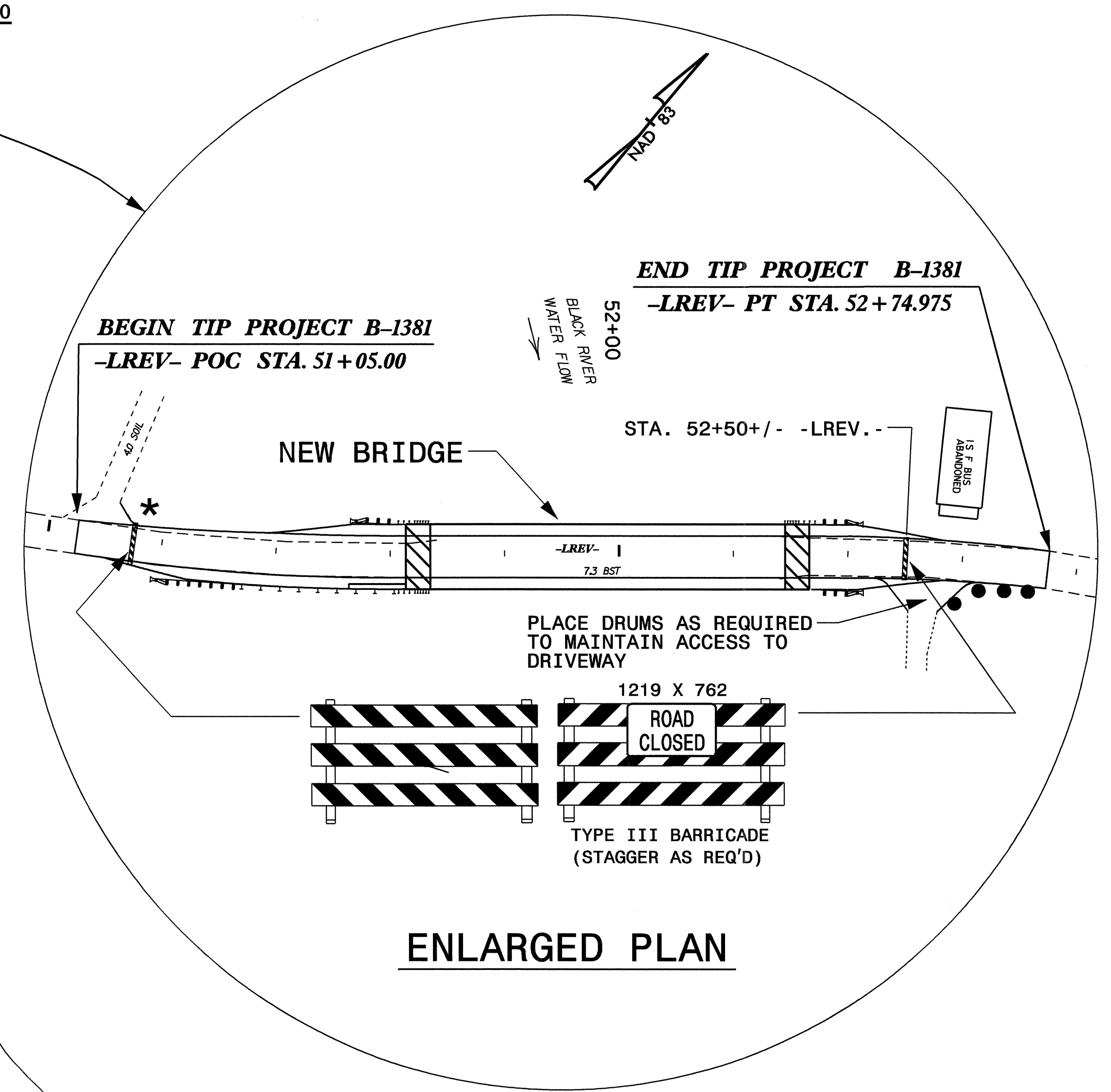
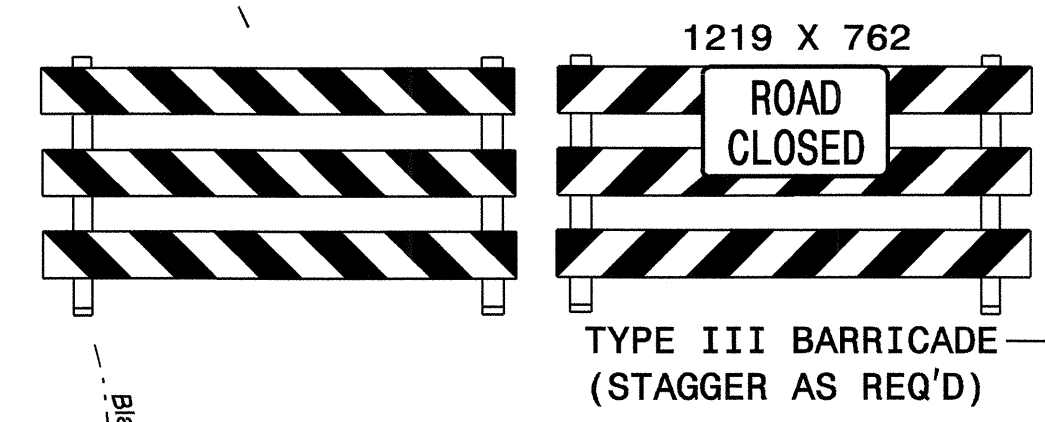
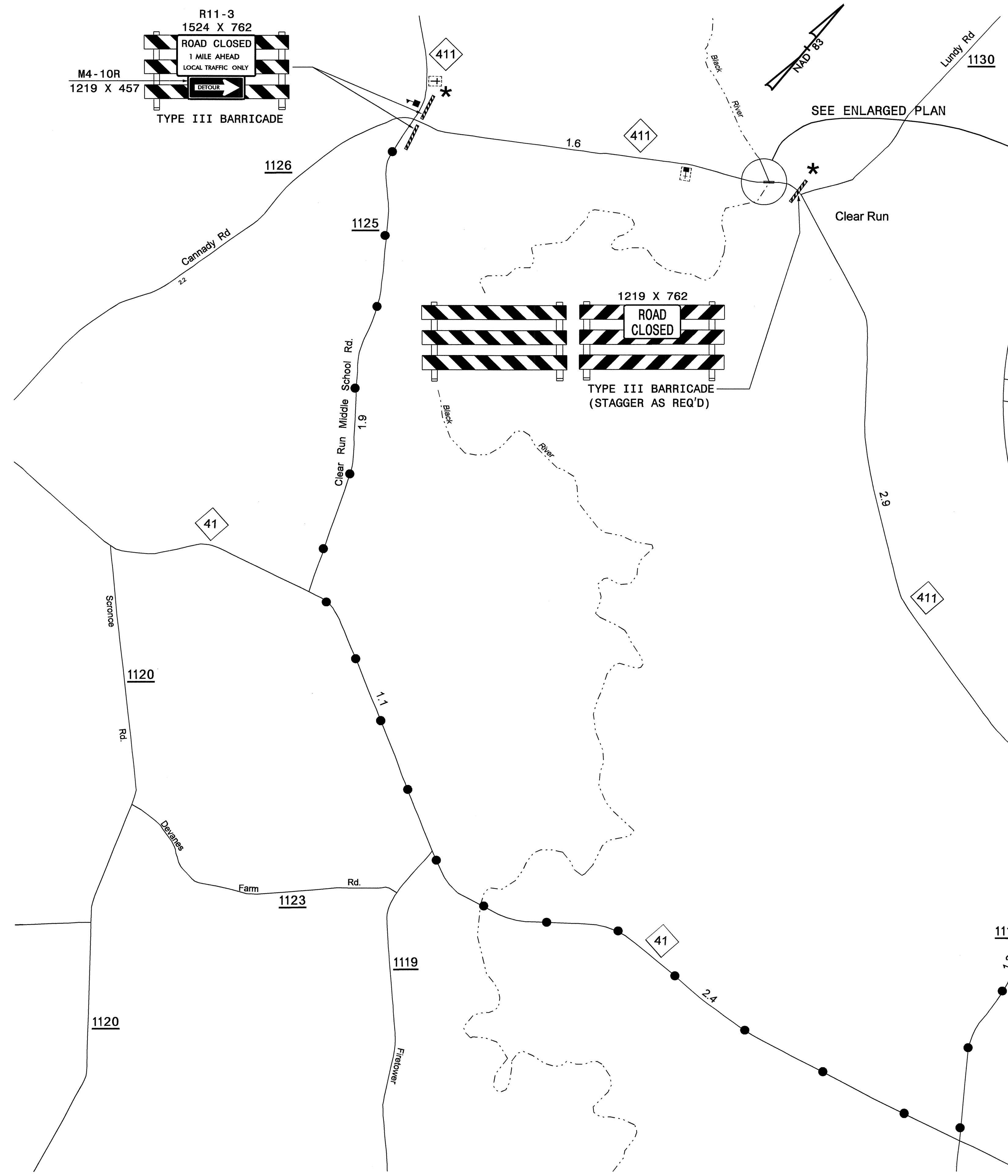
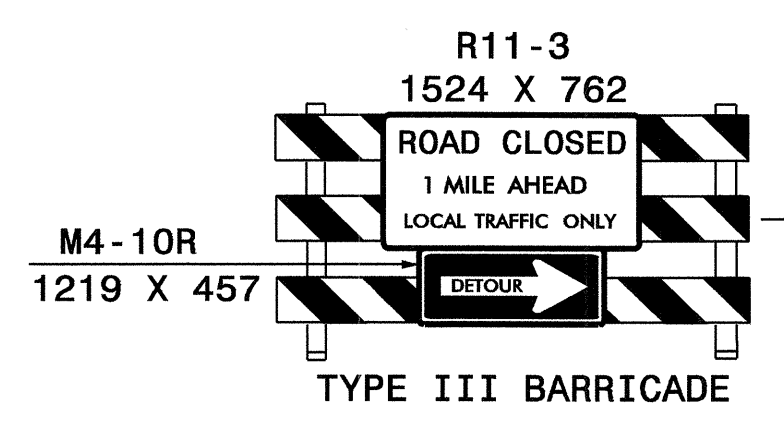
APPROVED:	PLAN PREPARED BY: N.C.D.O.T. WORK ZONE TRAFFIC CONTROL UNIT
DATE: 5 Dec 06	
SEAL	J. S. BOURNE, P.E. TRAFFIC CONTROL ENGINEER
	G. L. GETTIER, P.E. TRAFFIC CONTROL PROJECT ENGINEER
	J. W. GILSTRAP
	TRAFFIC CONTROL PROJECT DESIGN ENGINEER
	KEN BROADWELL
	TRAFFIC CONTROL DESIGN ENGINEER

05-DEC-2006 09:25
C:\DCL\cfs\proj\SPProj\TIPProj\Traffic\TrafficControl\Tcp\B1381.tcp
Kbr\odwell AT WL1224240

TIP PROJECT:



PROJ. REFERENCE NO.	SHEET NO.
B-3917	TCP-2



LEGEND	
*	INDICATES TO INSTALL STATIONARY SIGNS AND TYPE III BARRICADES IN ACCORDANCE WITH RSD 1101.03 SHEET 1 OF 9.
● — ●	DETOUR ROUTE

APPROVED: *[Signature]* DATE: 5 Dec 06

PLAN VIEW	
SCALE: NONE	REVISIONS
DATE: 11/06	
DWG. BY: KPB	
DESIGN BY: KPB	
REVIEWED BY: JWG	
CADD FILE	

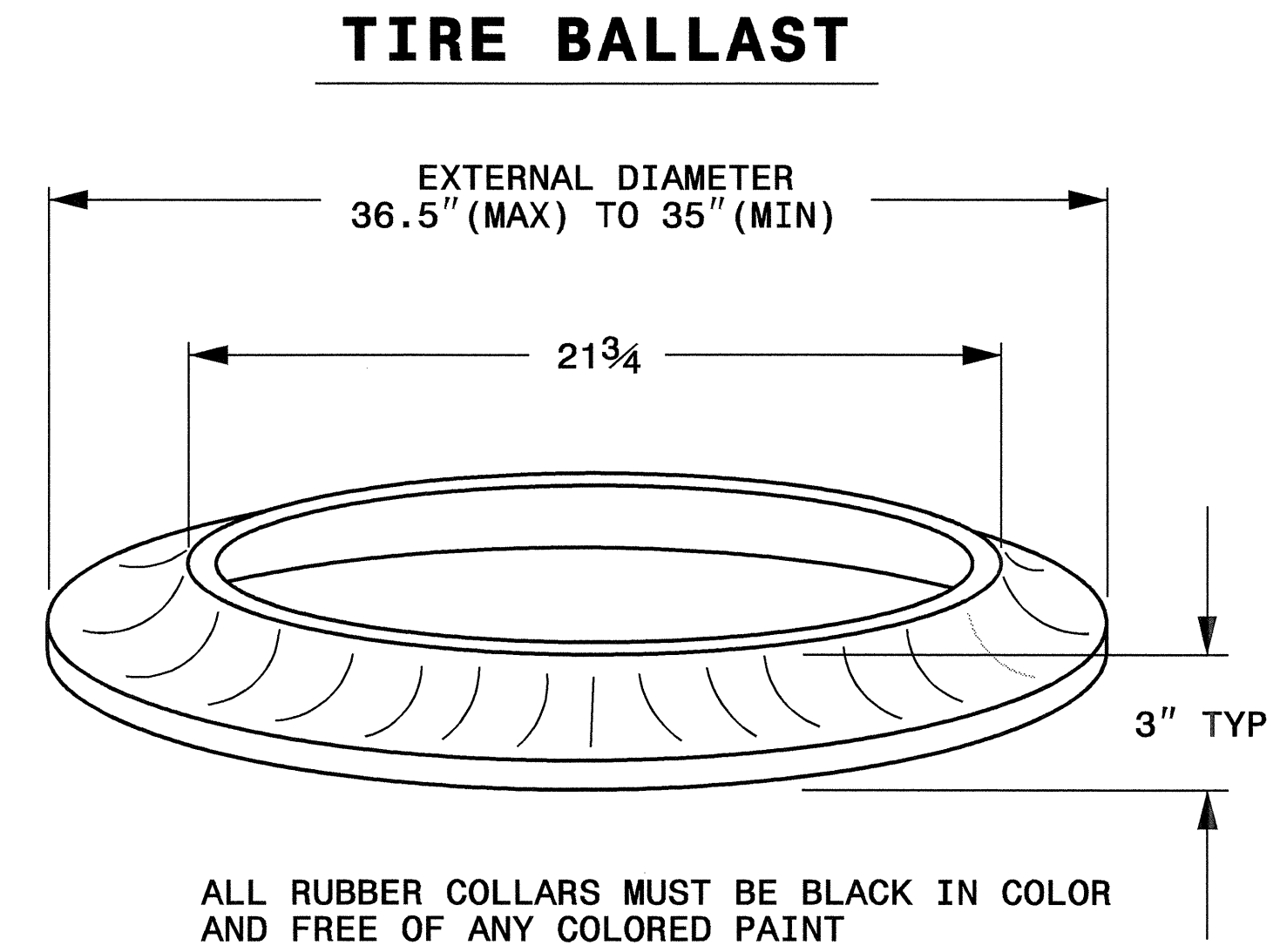
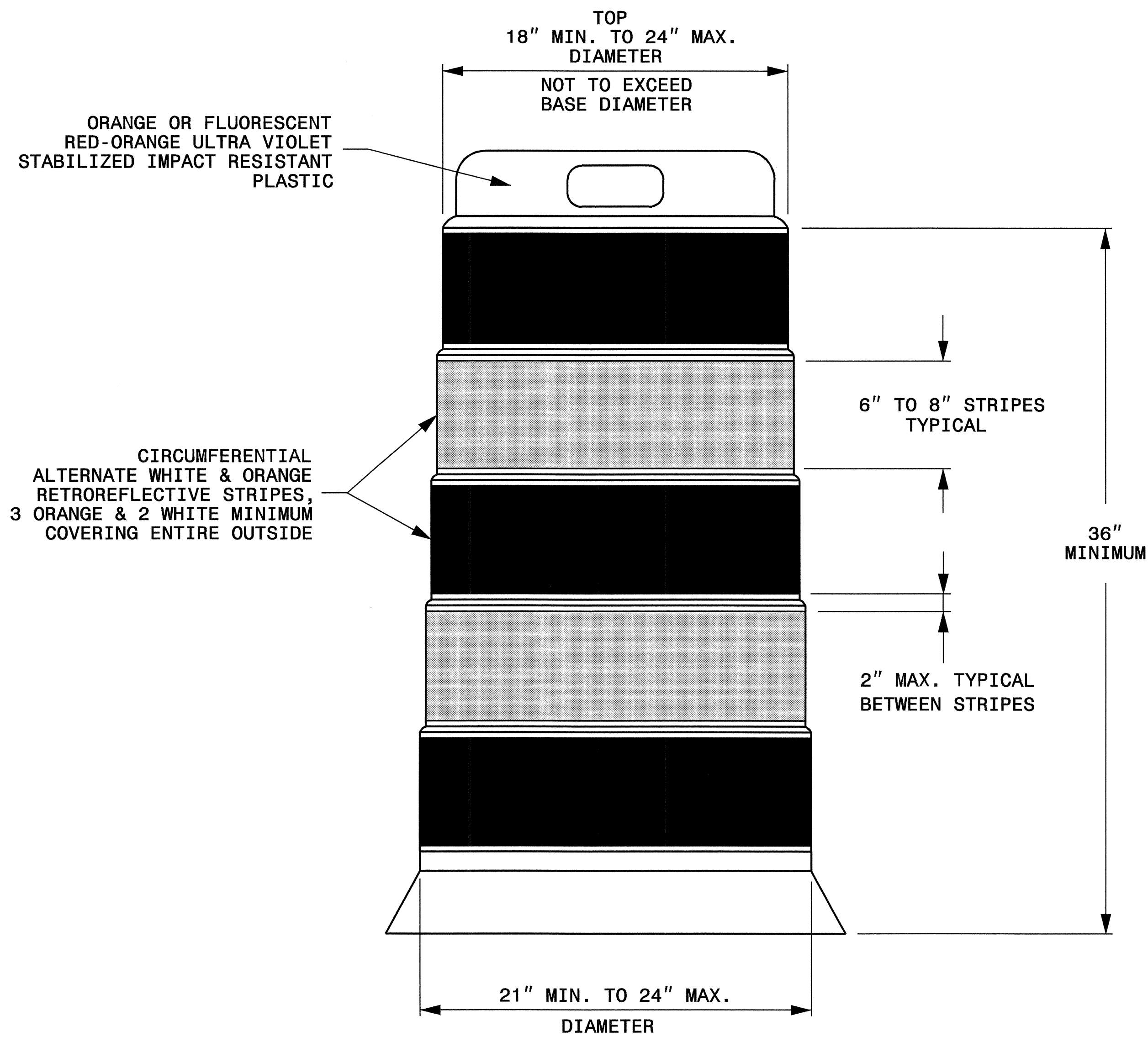
05-DEC-2006 09:24
 U:\DSE\4470\MSProj\N\TIP\Projects\B\B38\Traffic\control\top\b-138l_tc_top_top-2.dgn
 kbr\oadwell AT WZTC224240

STATE OF NORTH CAROLINA
 DEPT. OF TRANSPORTATION
 DIVISION OF HIGHWAYS
 RALEIGH, N.C.

7-06

ENGLISH STANDARD DRAWING FOR
DRUM

SHEET 1 OF 1
1130.01



GENERAL NOTES

- 1-BALLASTING SHALL BE ACHIEVED BY THE SAND BAG, TIRE-SIDEWALL BALLAST, OR PREFORMED WEIGHTED BASE BALLASTING METHODS. DO NOT PLACE BALLAST ON TOP OF THE DRUM. USE THE TIRE BALLAST AS SPECIFIED BY THE MANUFACTURER.
- 2-IF NECESSARY PLACE THE NAME OF THE AGENCY, CONTRACTOR, OR SUPPLIER ON NON-RETROREFLECTIVE DRUM SURFACES. SHOW THE LETTERS AND NUMBERS USING A NON-RETROREFLECTIVE COLOR AND NOT OVER 2" IN HEIGHT.

STATE OF NORTH CAROLINA
 DEPT. OF TRANSPORTATION
 DIVISION OF HIGHWAYS
 RALEIGH, N.C.

7-06

ENGLISH STANDARD DRAWING FOR
DRUM

SHEET 1 OF 1
1130.01

05-DEC-2006 09:24
 \\dot\at\st\00\WZ\122240
 kb\poc\well AT WZ122240

APPROVED: <i>[Signature]</i> DATE: 5 Dec 06	DRUM	
SEAL 	SCALE: NONE	
	DATE: 11/06	
	DWG. BY: KPB	
	DESIGN BY: KPB	
REVIEWED BY: JWG	REVISIONS	

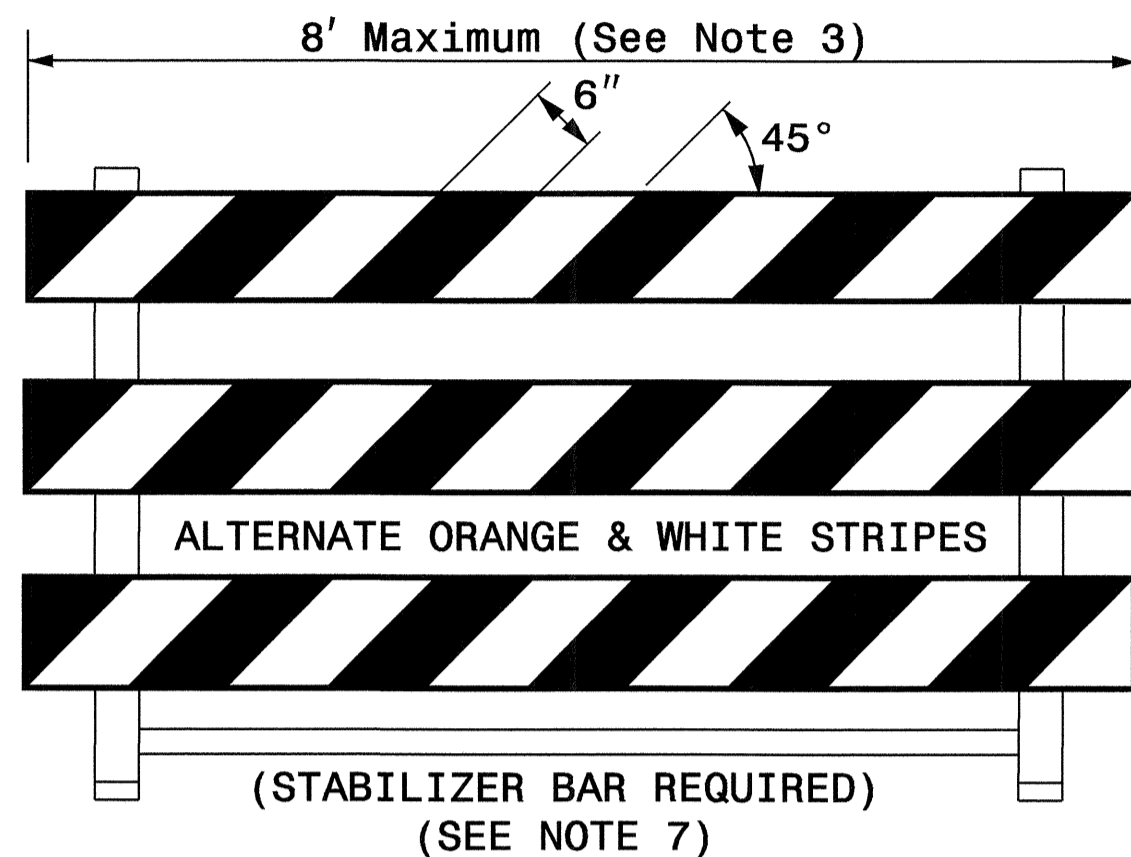
STATE OF NORTH CAROLINA
DEPT. OF TRANSPORTATION
DIVISION OF HIGHWAYS
RALEIGH, N.C.

7-06

ENGLISH STANDARD DRAWING FOR
BARRICADES
TYPE - III

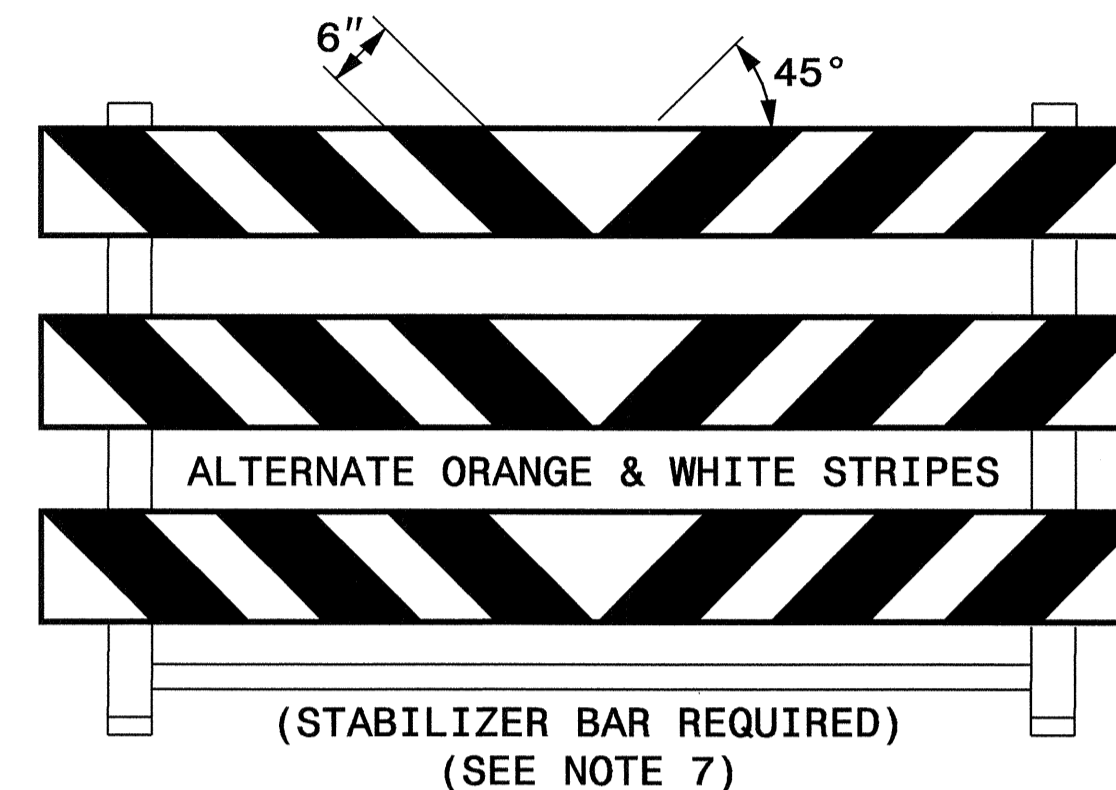
SHEET 1 OF 1
1145.01

TYPE III BARRICADE



TYPE III BARRICADE

END-OF-ROADWAY APPLICATIONS



STATE OF NORTH CAROLINA
DEPT. OF TRANSPORTATION
DIVISION OF HIGHWAYS
RALEIGH, N.C.

7-06



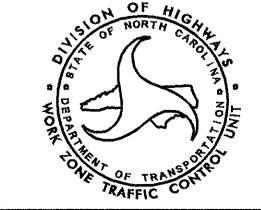
ENGLISH STANDARD DRAWING FOR
BARRICADES
TYPE - III

SHEET 1 OF 1
1145.01

GENERAL NOTES

- 1-HORIZONTAL RAILS FOR TYPE-III BARRICADES MAY BE HOLLOW/CORRUGATED EXTRUDED RIGID POLYOLEFIN, HIGH DENSITY POLYETHYLENE, OR OTHER NCDOT APPROVED RAILS. PLASTIC TYPE RAILS MUST BE FLAME TREATED BY THE MANUFACTURER SO THAT REFLECTIVE SHEETING MAY ADHERE PROPERLY.
- 2-BARRICADE SHALL BE LIMITED TO A MAXIMUM LENGTH OF 8 FT UNLESS NCHRP 350 CRASH TESTED AND NCDOT APPROVED.
- 3-ONLY NCDOT APPROVED COMPOSITE AND ROLL-UP SIGNS MAY BE MOUNTED ON THE BARRICADE RAILS. MOUNT SIGNS TO BARRICADED RAILS USING MINIMUM SIZES BOLT TO ENSURE SIGN WILL NOT BECOME DETACHED UNDER NORMAL WIND AND TRAFFIC CONDITIONS.
- 4-SIGNS MOUNTED ON BARRICADES SHOULD NOT COVER MORE THAN 50 PERCENT OF THE TOP TWO RAILS OR 33 PERCENT OF THE TOTAL AREA OF THE THREE RAILS.
- 5-USE TYPE VII, VIII OR IX RETROREFLECTIVE SHEETING ON BOTH SIDES OF THE BARRICADE RAILS.
- 6-BARRICADE MUST BE NCHRP 350 AND NCDOT APPROVED WITH STABILIZER BAR OR ADEQUATE LATERAL BRACING.
- 7-ASSEMBLY OF THE GENERIC BARRICADES MUST BE SELF CERTIFIED BY THE ASSEMBLER.
- 8-BARRICADES USED TO CLOSE A ROADWAY SHALL EXTEND ACROSS THE ENTIRE ROADWAY. WHERE LOCAL TRAFFIC MUST BE MAINTAINED, THEY MAY BE PLACED IN A STAGGERED PATTERN.
- 9-STRIPES ON WORK ZONE BARRICADE RAILS SHALL BE ALTERNATE ORANGE AND WHITE RETROREFLECTIVE STRIPES, SLOPED DOWNWARD TOWARDS THE SIDE WHICH TRAFFIC IS TO PASS OR TURN IN DETOURING. WHERE NO TURNS ARE INTENDED, THE STRIPES SHOULD SLOPE DOWNWARD TOWARD THE CENTER OF THE BARRICADE OR BARRICADES. USE RED AND WHITE STRIPES FOR PERMANENT BARRICADES.
- 10-SEE NCDOT APPROVED PRODUCTS LIST FOR MANUFACTURERS OF APPROVED BARRICADES.
- 11-PLACE MANUFACTURER'S NAME AND FEDERAL HIGHWAY ADMINISTRATION'S NCHRP 350 APPROVAL LETTER NUMBER ON BARRICADE FRAME.
- 12-PLACE SANDBAGS ON FEET OF THE FRAME FOR BALLASTING. DO NOT PLACE SANDBAGS ON TOP OF A STRIPED RAIL OR STABILIZER BAR. DO NOT BALLAST BARRICADES BY HEAVY OBJECTS SUCH AS ROCKS, CHUNKS OF CONCRETE OR OTHER ITEMS THAT WOULD CAUSE DAMAGE IF THE BARRICADE IS STRUCK BY A VEHICLE.

05-DEC-2006 09:24
\\dot\cfs\p\01\NSP\o\TIP\Projects-B\1381\Traffic\TrafficControl\top\1381.tcp
kbr\odwell AT W1222240

APPROVED:  DATE: 5 DEC 06	BARRICADES	
	SCALE: NONE	
	DATE: 11/06	
	DWG. BY: KPB	
	DESIGN BY: KPB	
REVIEWED BY: JWG	REVISIONS	