

CONTRACT: C201245 **TIP: U-4421**

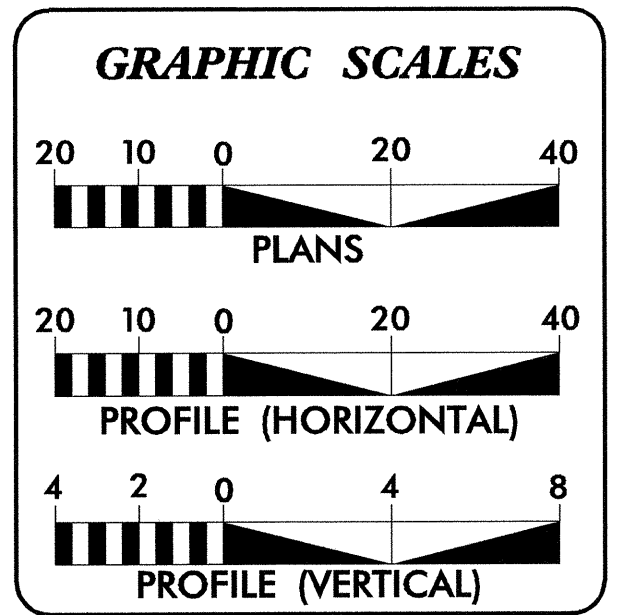
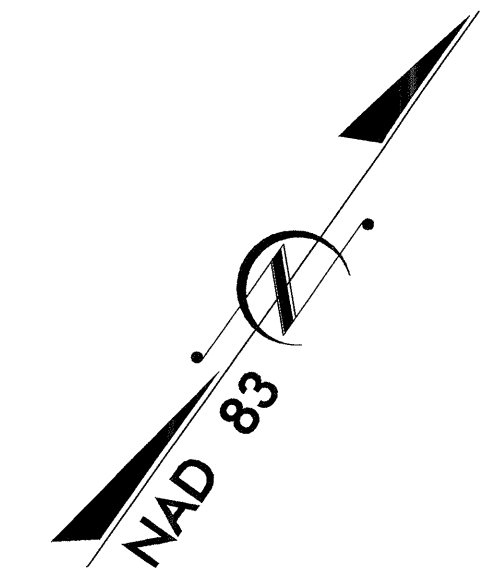
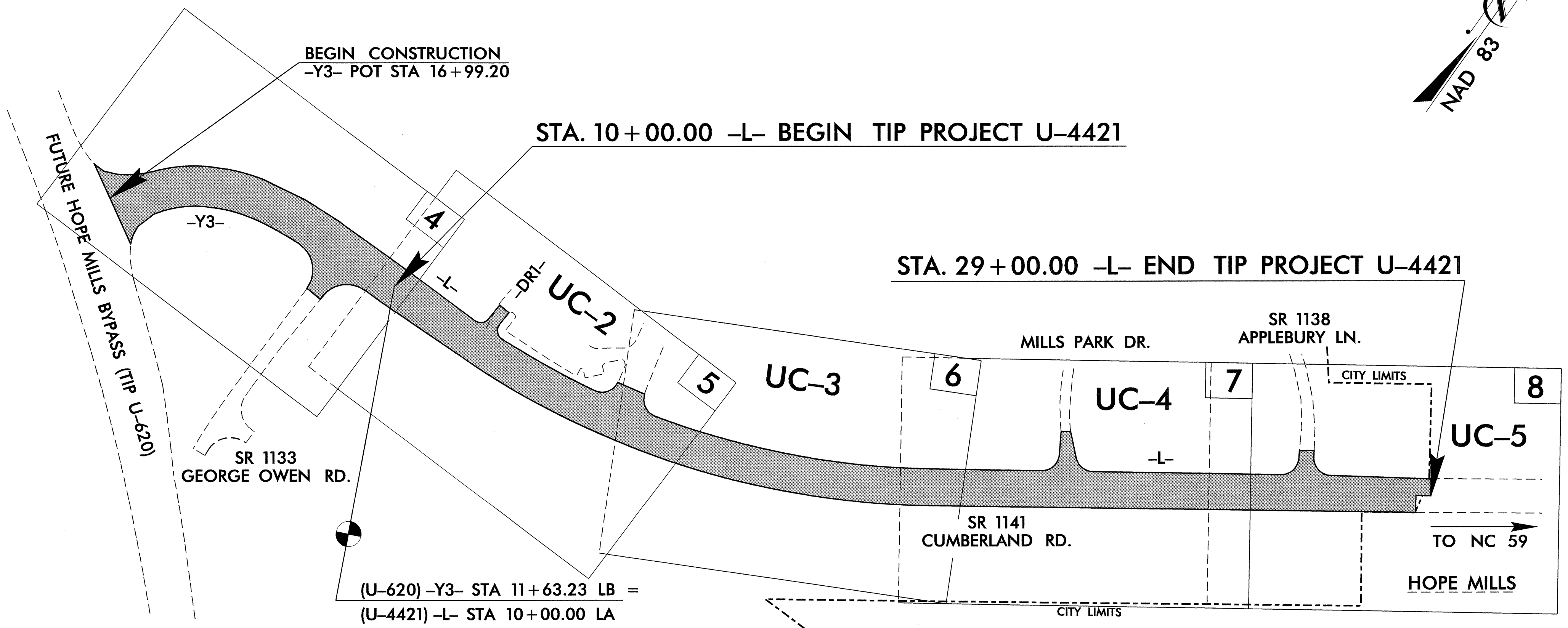
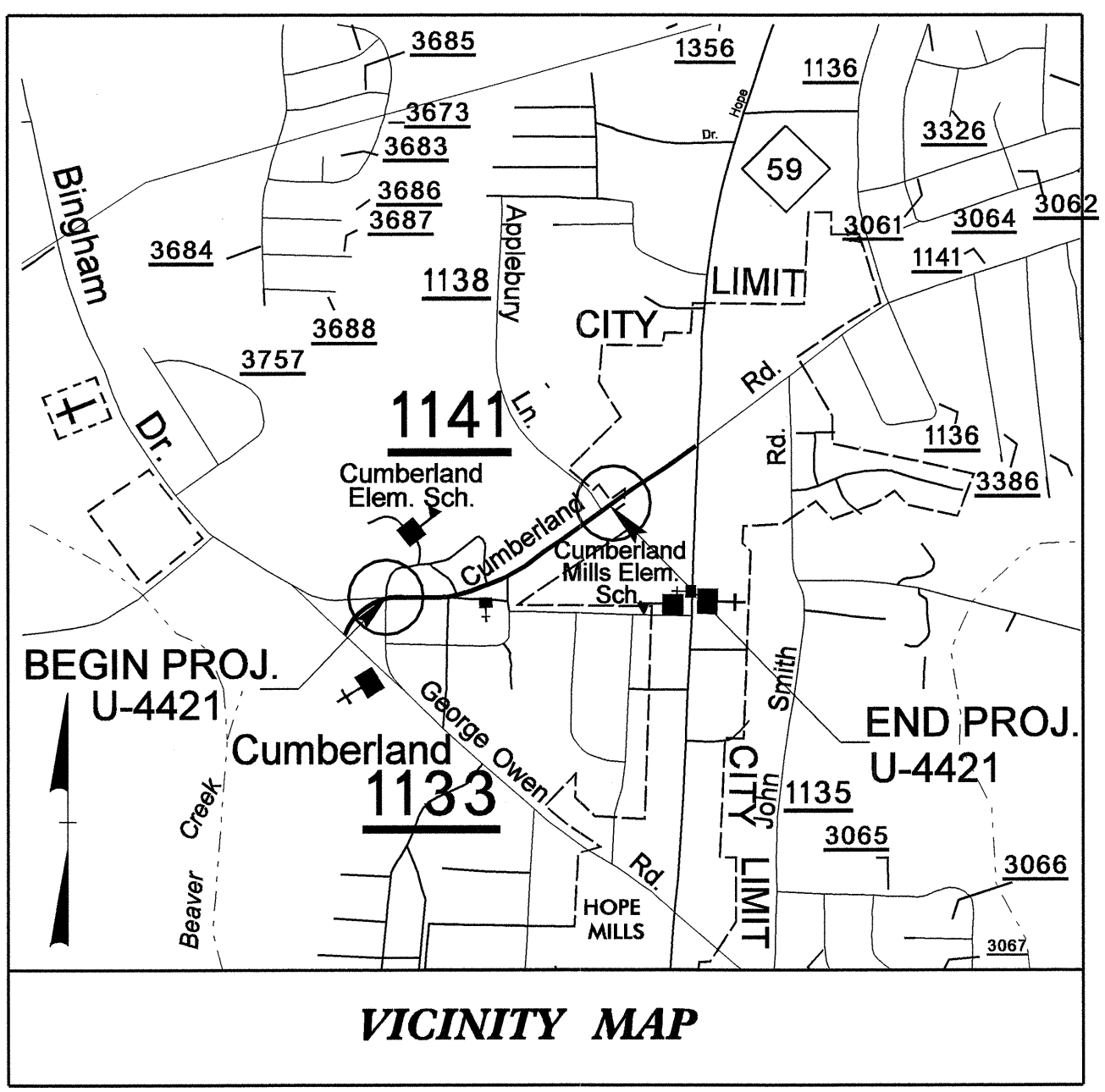
T.I.P. NO.	SHEET NO.
U-4421	UC-1

STATE OF NORTH CAROLINA
 DIVISION OF HIGHWAYS

UTILITY CONSTRUCTION PLANS CUMBERLAND COUNTY

**LOCATION: SR 1141 (CUMBERLAND RD), FROM SR 1133
 (GEORGE OWEN RD) TO WEST OF NC 59 (HOPE MILLS RD.)**

TYPE OF WORK: UTILITY - WATER



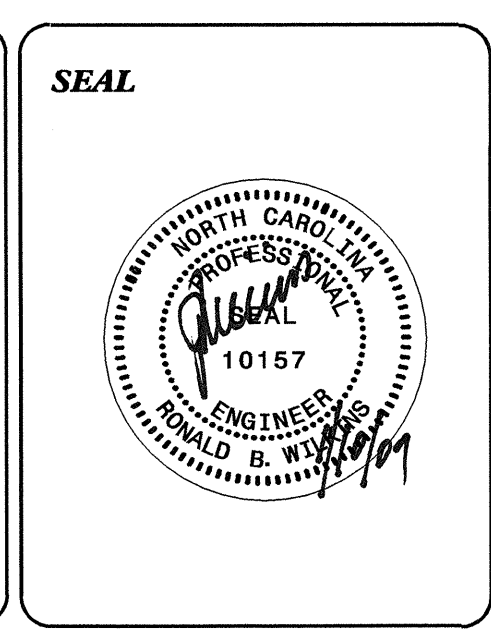
INDEX OF SHEETS


SHEET NO.	DESCRIPTION
UC-1	TITLE SHEET
UC-2 THRU UC-5	UTILITY CONSTRUCTION PLAN SHEETS
UC-6	DETAIL SHEET

2006 STANDARD SPECIFICATION

WATER AND SEWER OWNERS ON PROJECT

WATER: PUBLIC WORKS COMMISSION OF FAYETTEVILLE (PWC)





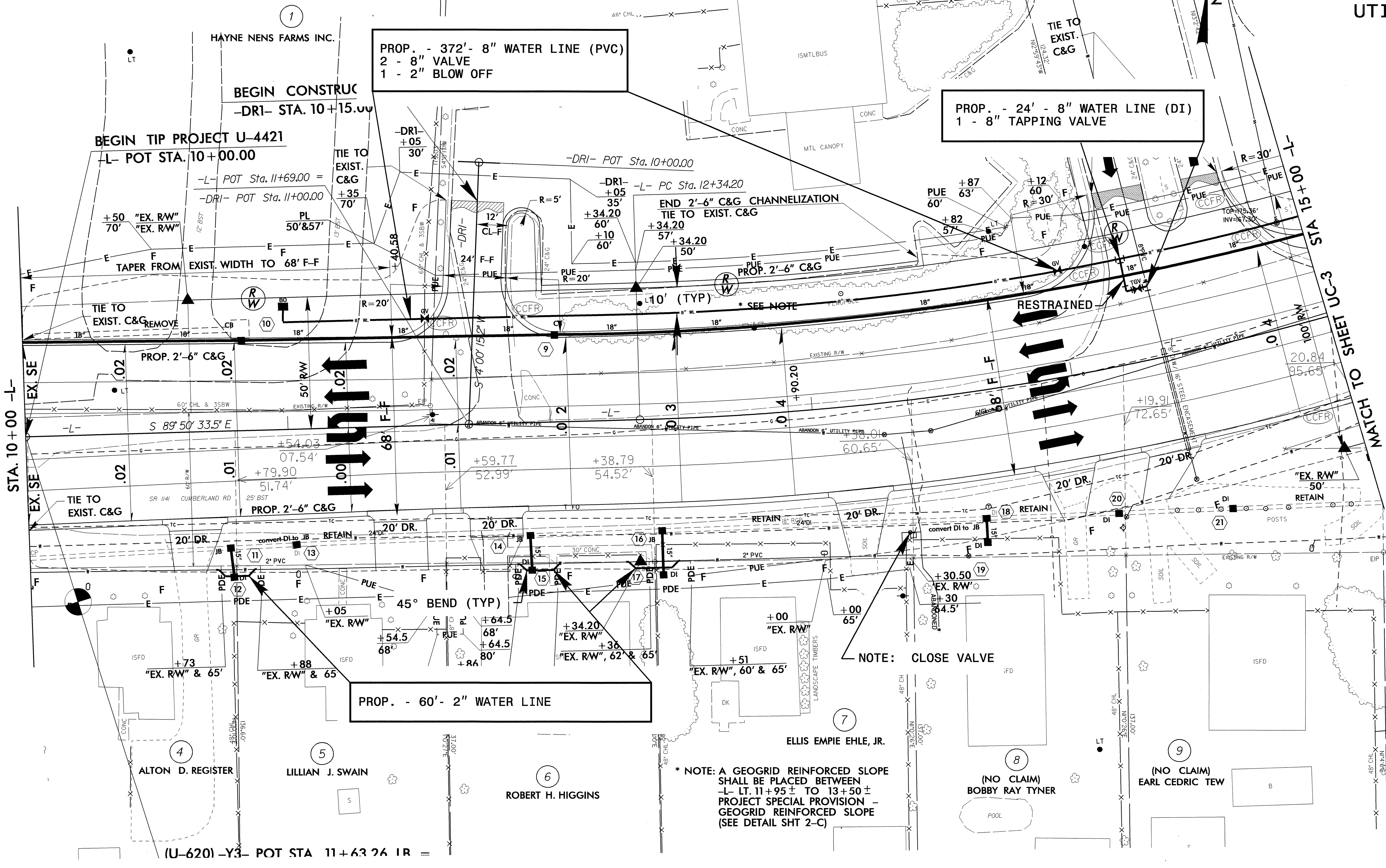
PREPARED IN THE OFFICE OF:
DIVISION OF HIGHWAYS
PROJECT SERVICES
UTILITY SECTION

1591 MAIL SERVICES CENTER
 RALEIGH NC 27699-1591
 PHONE (919) 250-4128
 FAX (919) 250-4119

Roger Worthington, P.E. UTILITIES SECTION ENGINEER
R. B. Wilkins, P.E. UTILITIES SQUAD LEADER PROJECT ENGINEER
John A. Nigro, P.E. UTILITIES PROJECT DESIGNER

PROJECT REFERENCE NO.	SHEET NO.
U-4421	UC-2
DESIGNED BY: JAN	
DRAWN BY: JAN	
CHECKED BY: RBW	
APPROVED BY: RBW	
REVISOR:	
NORTH CAROLINA DEPARTMENT OF TRANSPORTATION PROJECT SERVICES UNIT PHONE: (919) 250-4128 FAX: (919) 250-4119	
UTILITY CONSTRUCTION PLANS ONLY	

UTILITY CONSTRUCTION



PROP. - 372'- 8" WATER LINE (PVC)
 2 - 8" VALVE
 1 - 2" BLOW OFF

PROP. - 24' - 8" WATER LINE (DI)
 1 - 8" TAPPING VALVE

PROP. - 60'- 2" WATER LINE

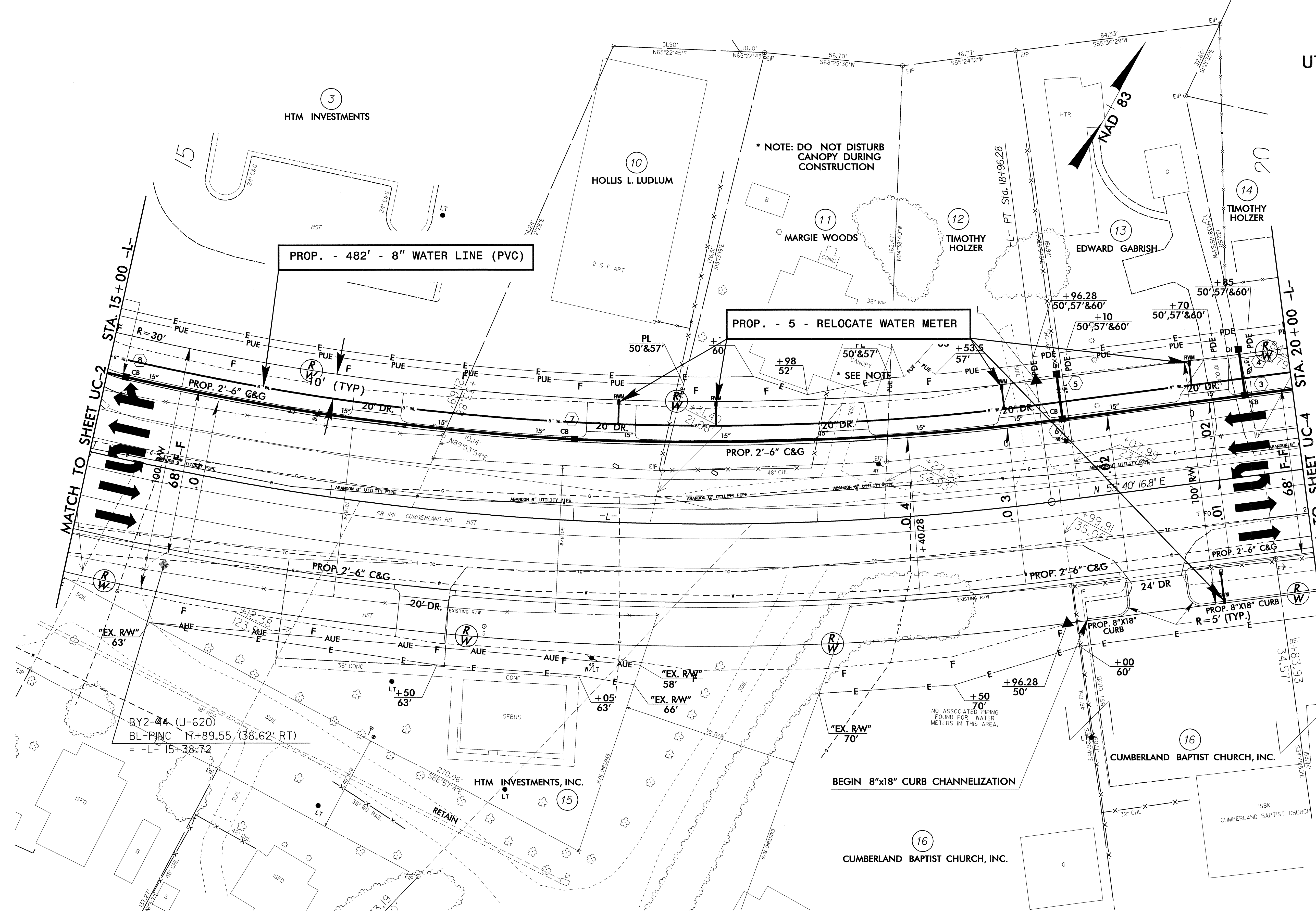
* NOTE: A GEOGRID REINFORCED SLOPE SHALL BE PLACED BETWEEN -L- LT. 11+95± TO 13+50± PROJECT SPECIAL PROVISION - GEOGRID REINFORCED SLOPE (SEE DETAIL SHT 2-C)

NOTE: CLOSE VALVE

8/17/99
 08-JAN-2007 14:37
 C:\Users\jshaw\Documents\proj\4421\ut_5\uc2.psh.dgn

PROJECT REFERENCE NO.	SHEET NO.
U-4421	UC-3
DESIGNED BY: JAN	
DRAWN BY: JAN	
CHECKED BY: RBW	
APPROVED BY: RBW	
REVISED:	
NORTH CAROLINA DEPARTMENT OF TRANSPORTATION PROJECT SERVICES UNIT PHONE: (919) 250-4128 FAX: (919) 250-4119	
UTILITY CONSTRUCTION PLANS ONLY	

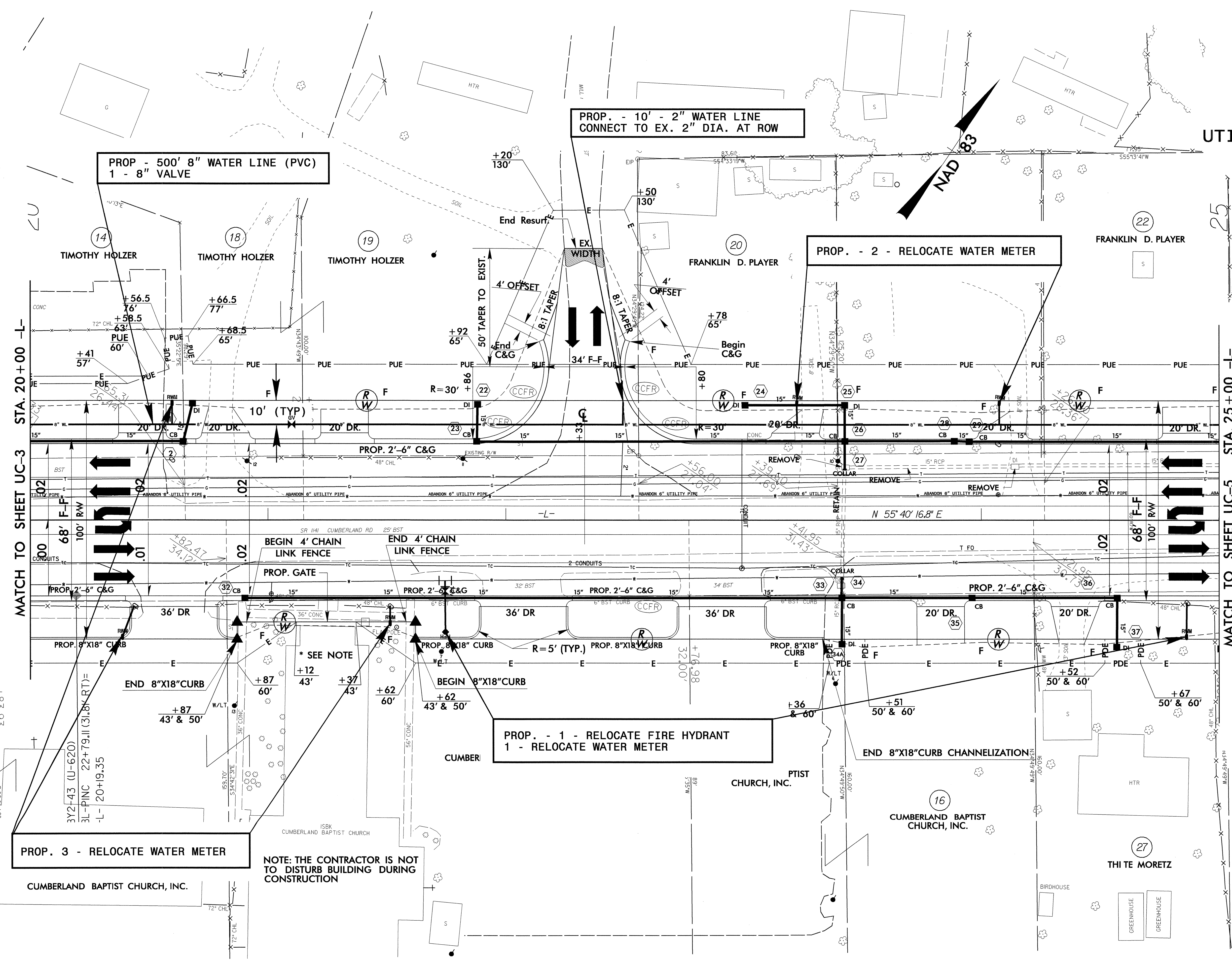
UTILITY CONSTRUCTION



08-JAN-2007 14:39 N:\proj\4421\ut-6\uc3-pshdgfn
 8/17/99

PROJECT REFERENCE NO.	SHEET NO.
U-4421	UC-4
DESIGNED BY: JAN	
DRAWN BY: JAN	
CHECKED BY: RBW	
APPROVED BY: RBW	
REVISIONS:	
NORTH CAROLINA DEPARTMENT OF TRANSPORTATION	
PROJECT SERVICES UNIT PHONE: (919) 250-4128 FAX: (919) 250-4119	
UTILITY CONSTRUCTION PLANS ONLY	

UTILITY CONSTRUCTION



**PROP. - 500' 8" WATER LINE (PVC)
1 - 8" VALVE**

**PROP. - 10' - 2" WATER LINE
CONNECT TO EX. 2" DIA. AT ROW**

PROP. - 2 - RELOCATE WATER METER

**PROP. - 1 - RELOCATE FIRE HYDRANT
1 - RELOCATE WATER METER**


PROP. 3 - RELOCATE WATER METER

**NOTE: THE CONTRACTOR IS NOT
TO DISTURB BUILDING DURING
CONSTRUCTION**

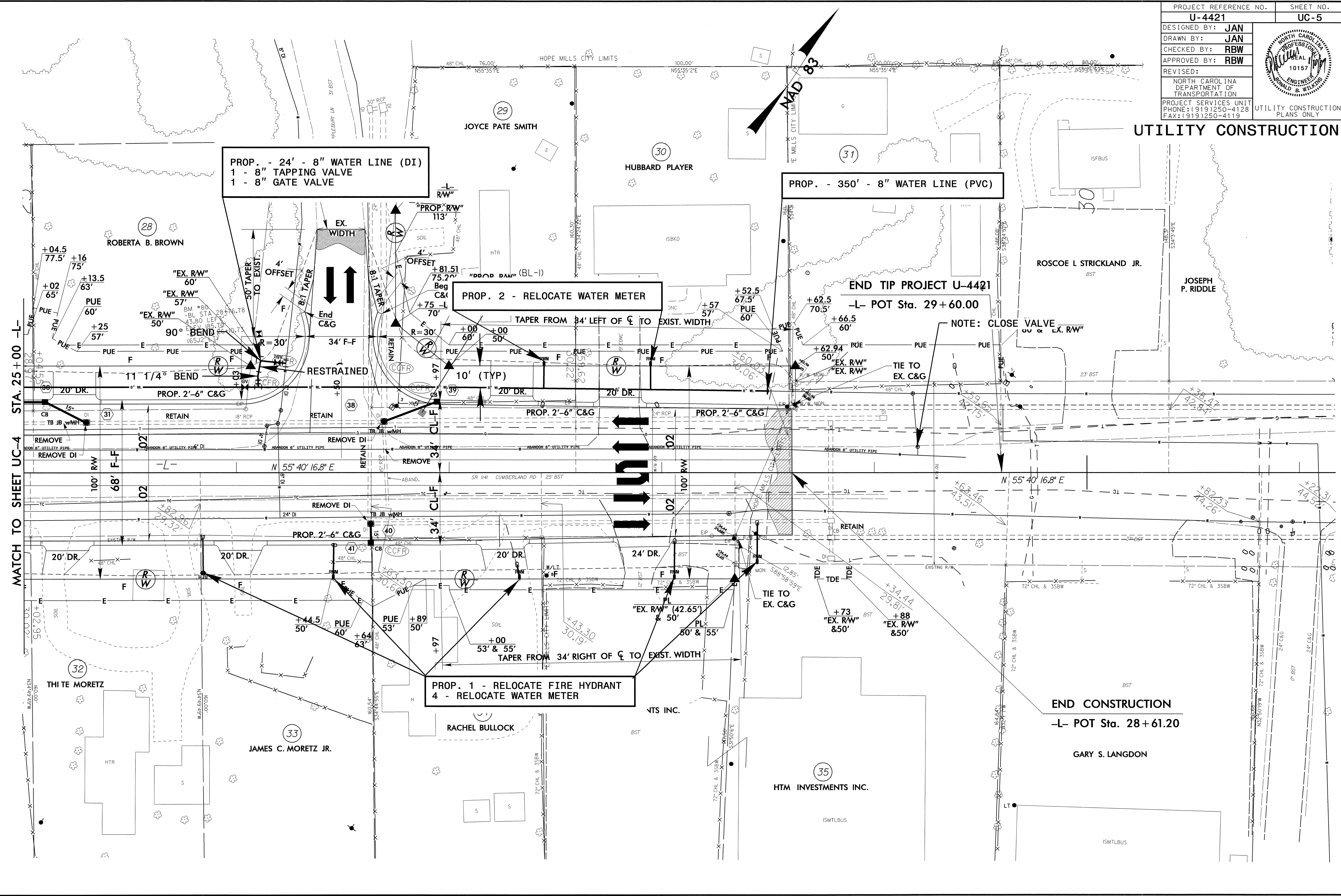
MATCH TO SHEET UC-3 STA. 20+00 -L-

MATCH TO SHEET UC-5 STA. 25+00 -L-

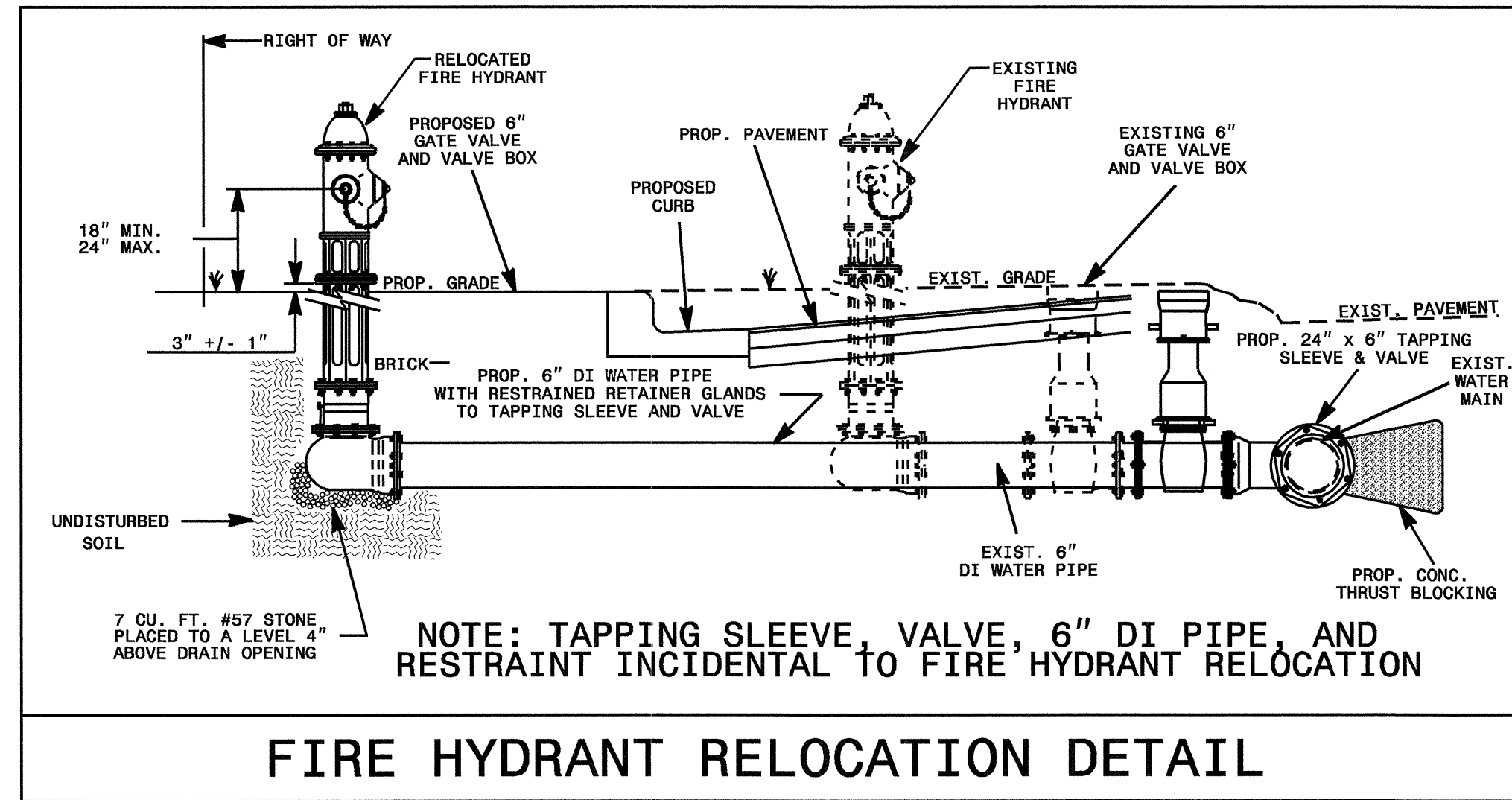
08-JAN-2007 14:40 c:\projects\4421\ut_7_uc4_psh.dgn

PROJECT REFERENCE NO.	SHEET NO.
U-4421	UC-5
DESIGNED BY: JAN	
DRAWN BY: JAN	
CHECKED BY: RBW	
APPROVED BY: RBW	
REVISED:	NORTH CAROLINA DEPARTMENT OF TRANSPORTATION
PROJECT SERVICES UNIT PHONE: (919) 250-4128 FAX: (919) 250-4119	UTILITY CONSTRUCTION PLANS ONLY

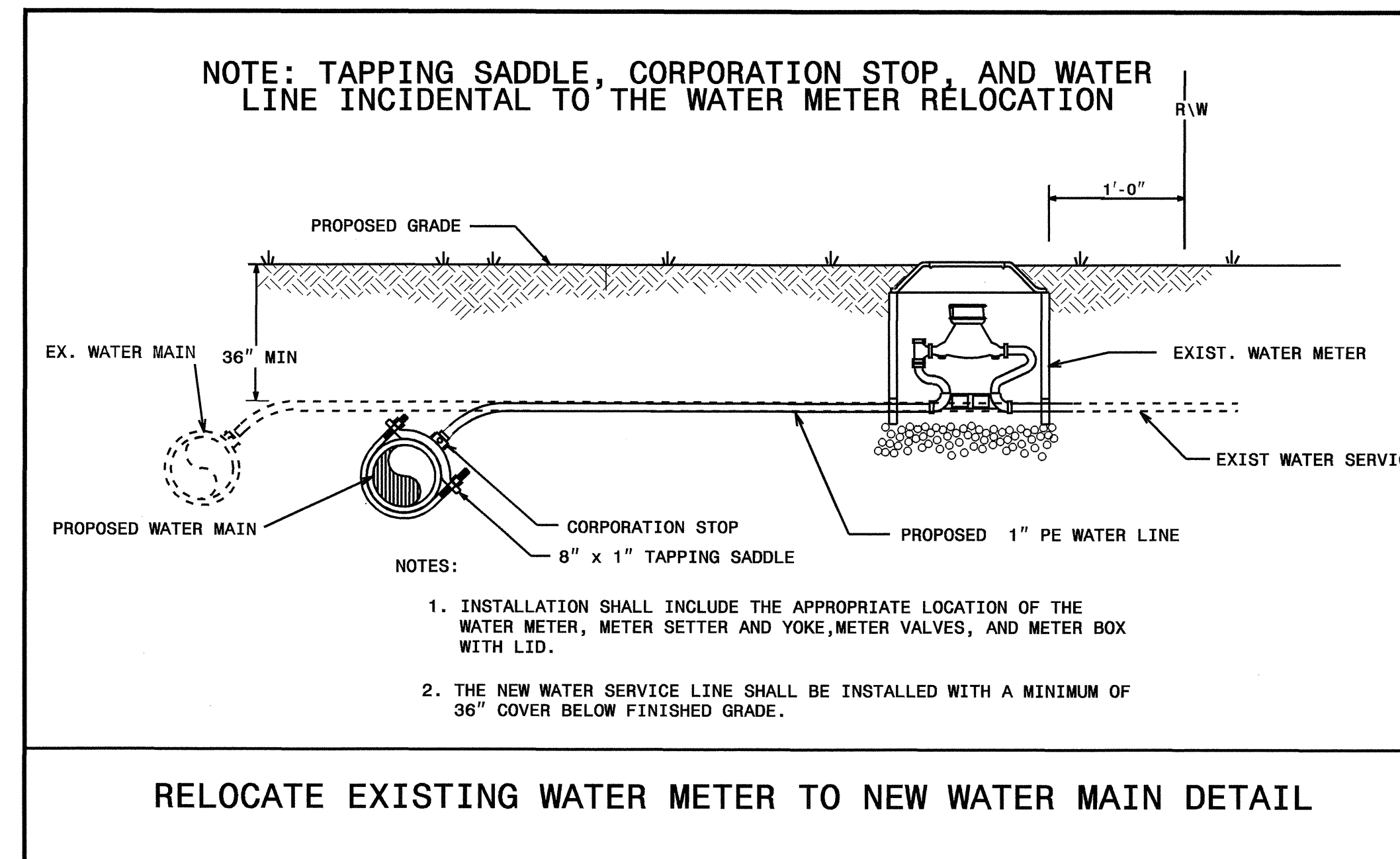
UTILITY CONSTRUCTION



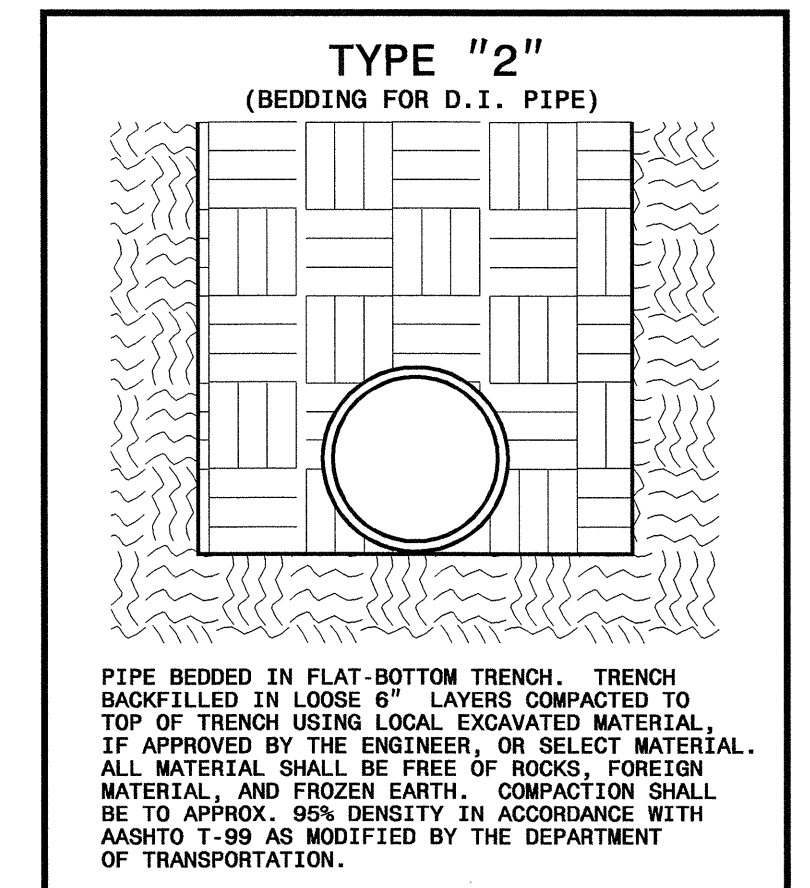
UTILITY CONSTRUCTION



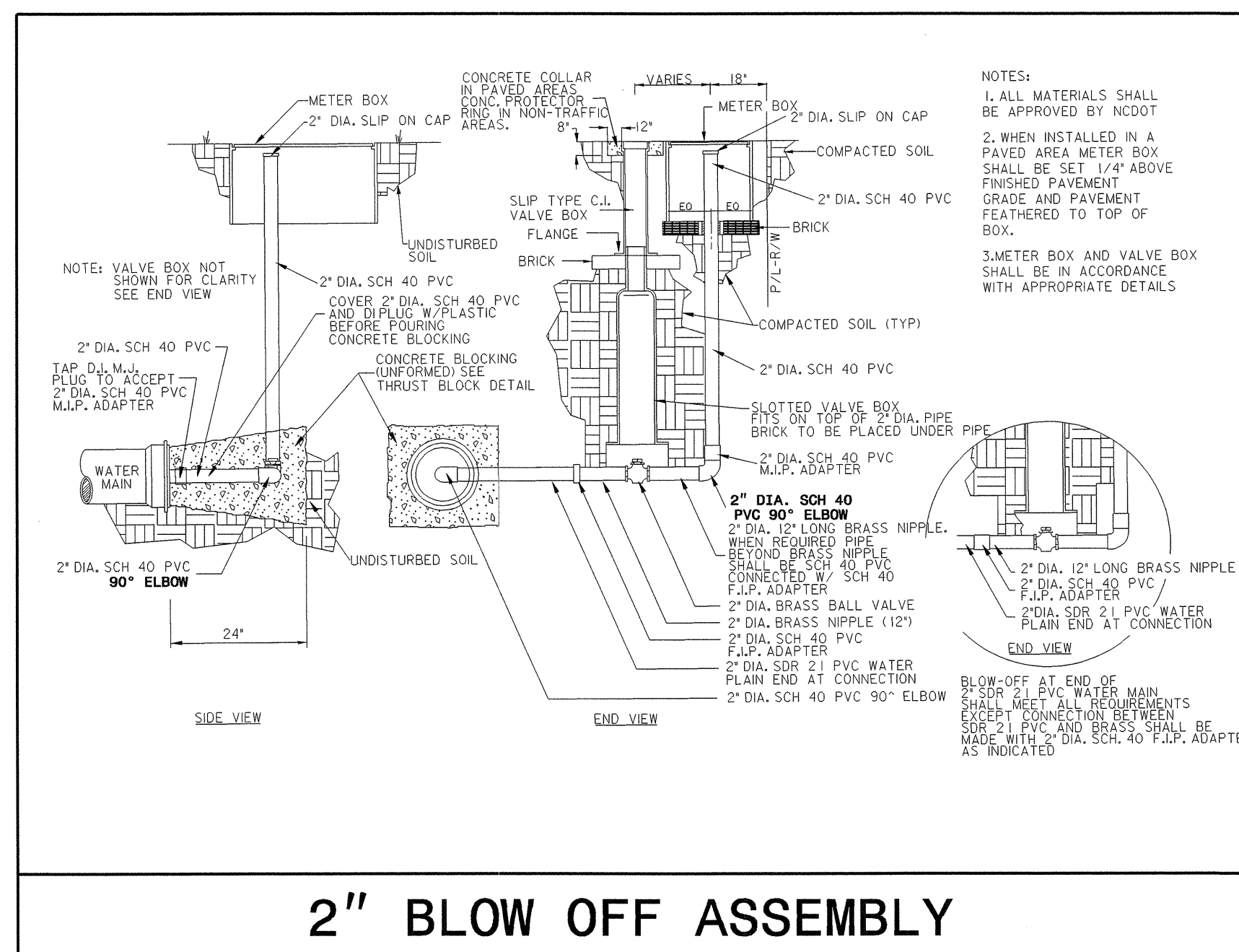
FIRE HYDRANT RELOCATION DETAIL



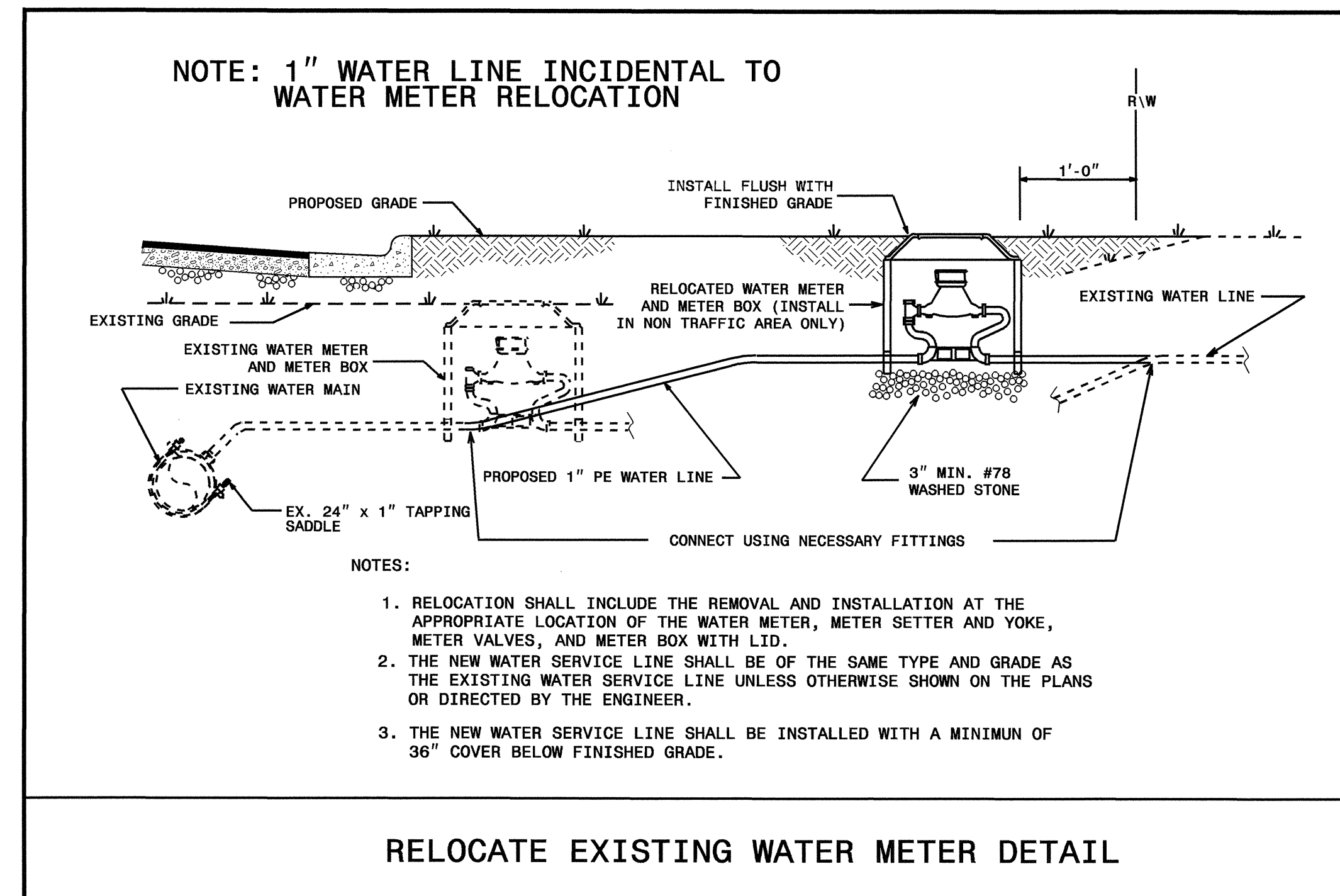
RELOCATE EXISTING WATER METER TO NEW WATER MAIN DETAIL



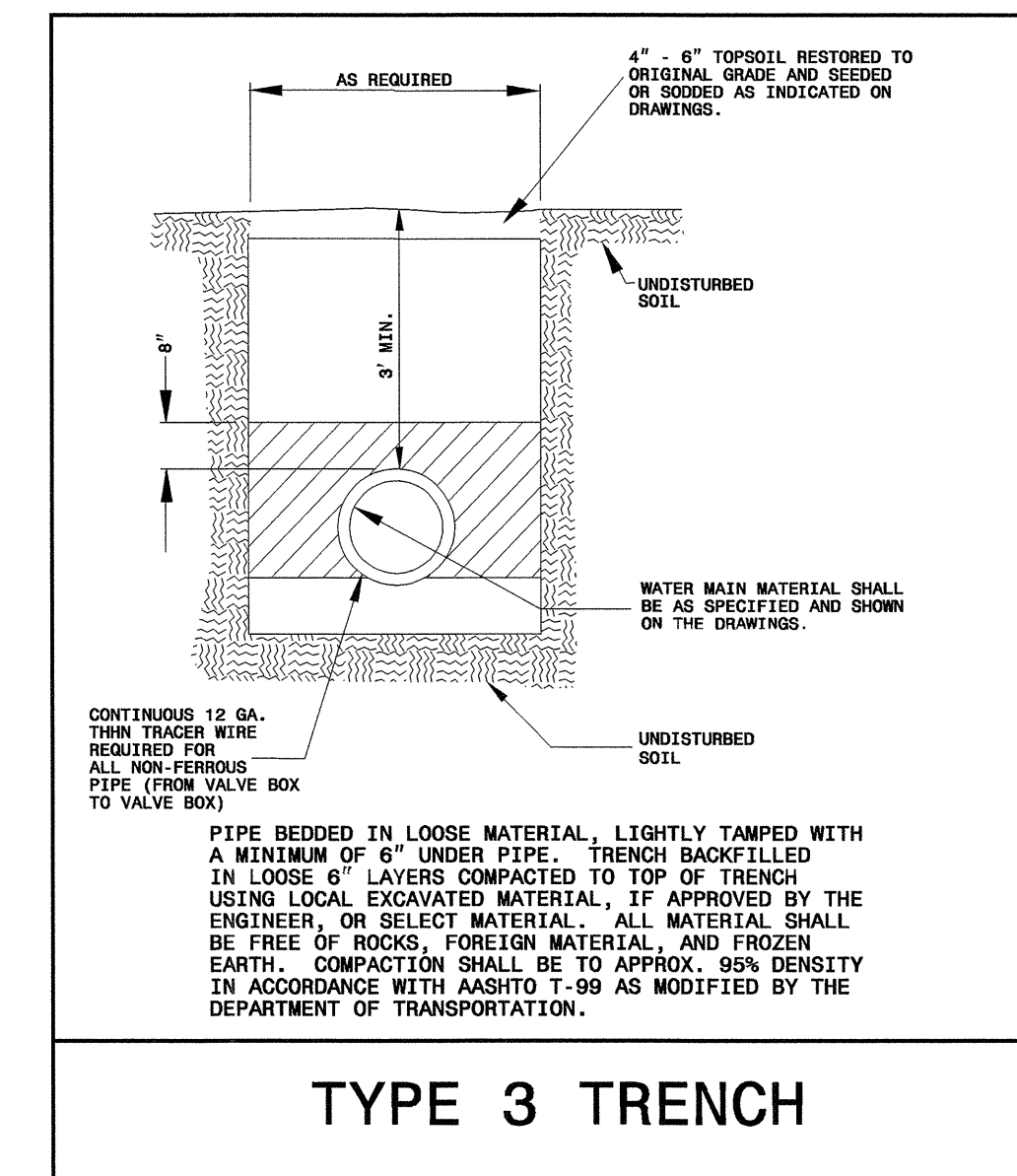
PIPE BEDDED IN FLAT-BOTTOM TRENCH. TRENCH BACKFILLED IN LOOSE 6" LAYERS COMPACTED TO TOP OF TRENCH USING LOCAL EXCAVATED MATERIAL. IF APPROVED BY THE ENGINEER, OR SELECT MATERIAL. ALL MATERIAL SHALL BE FREE OF ROCKS, FOREIGN MATERIAL, AND FROZEN EARTH. COMPACTION SHALL BE TO APPROX. 95% DENSITY IN ACCORDANCE WITH AASHTO T-99 AS MODIFIED BY THE DEPARTMENT OF TRANSPORTATION.



2" BLOW OFF ASSEMBLY

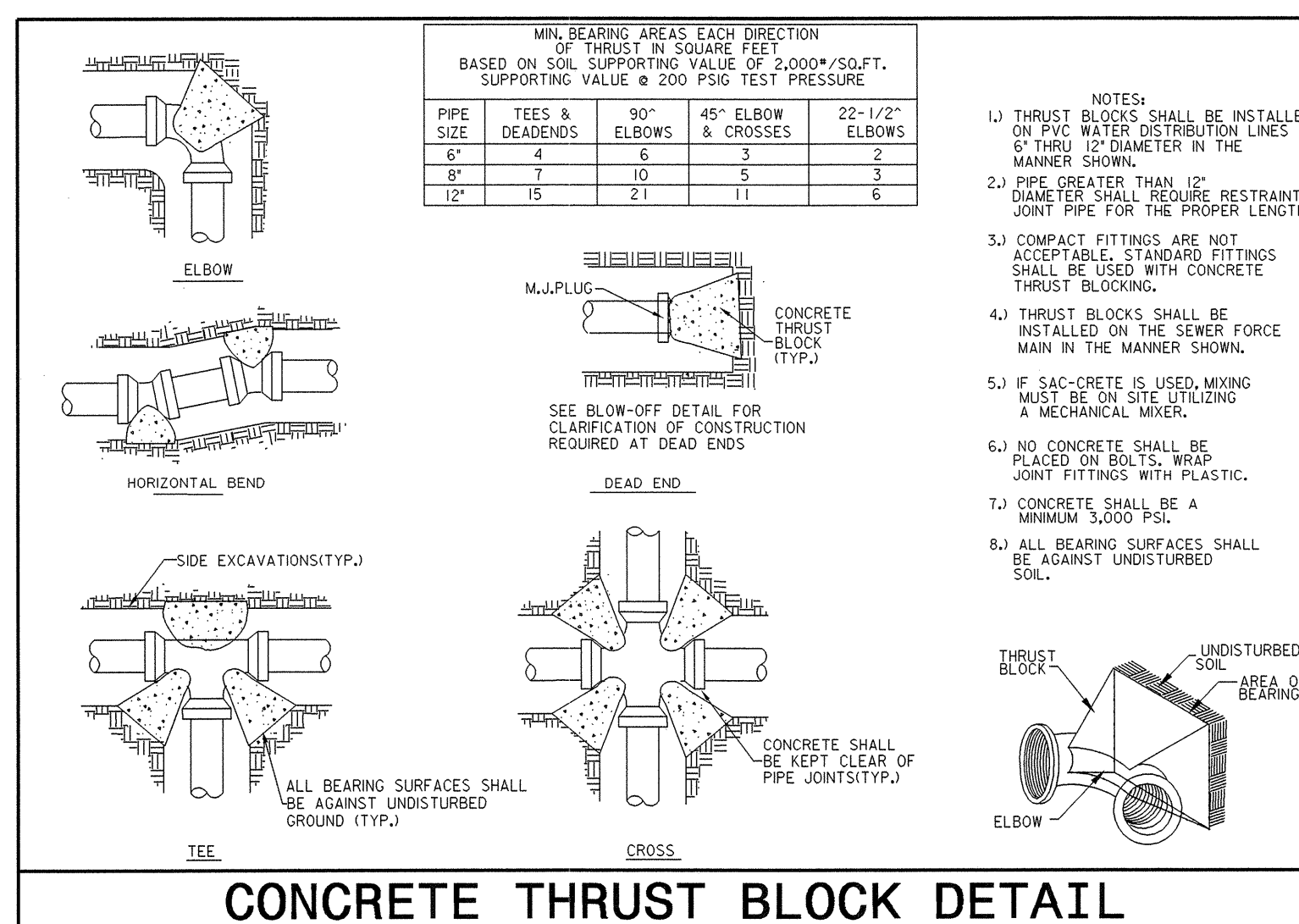


RELOCATE EXISTING WATER METER DETAIL



TYPE 3 TRENCH

NOMINAL PIPE SIZE (INCHES)	TRENCH WIDTH (INCHES)	NOMINAL PIPE SIZE (INCHES)	TRENCH WIDTH (FEET)
4	28	20	44
6	30	24	48
8	32	30	54
10	34	36	60
12	36	42	66
14	38	48	72
16	40	54	78
18	42		



CONCRETE THRUST BLOCK DETAIL

09/08/99

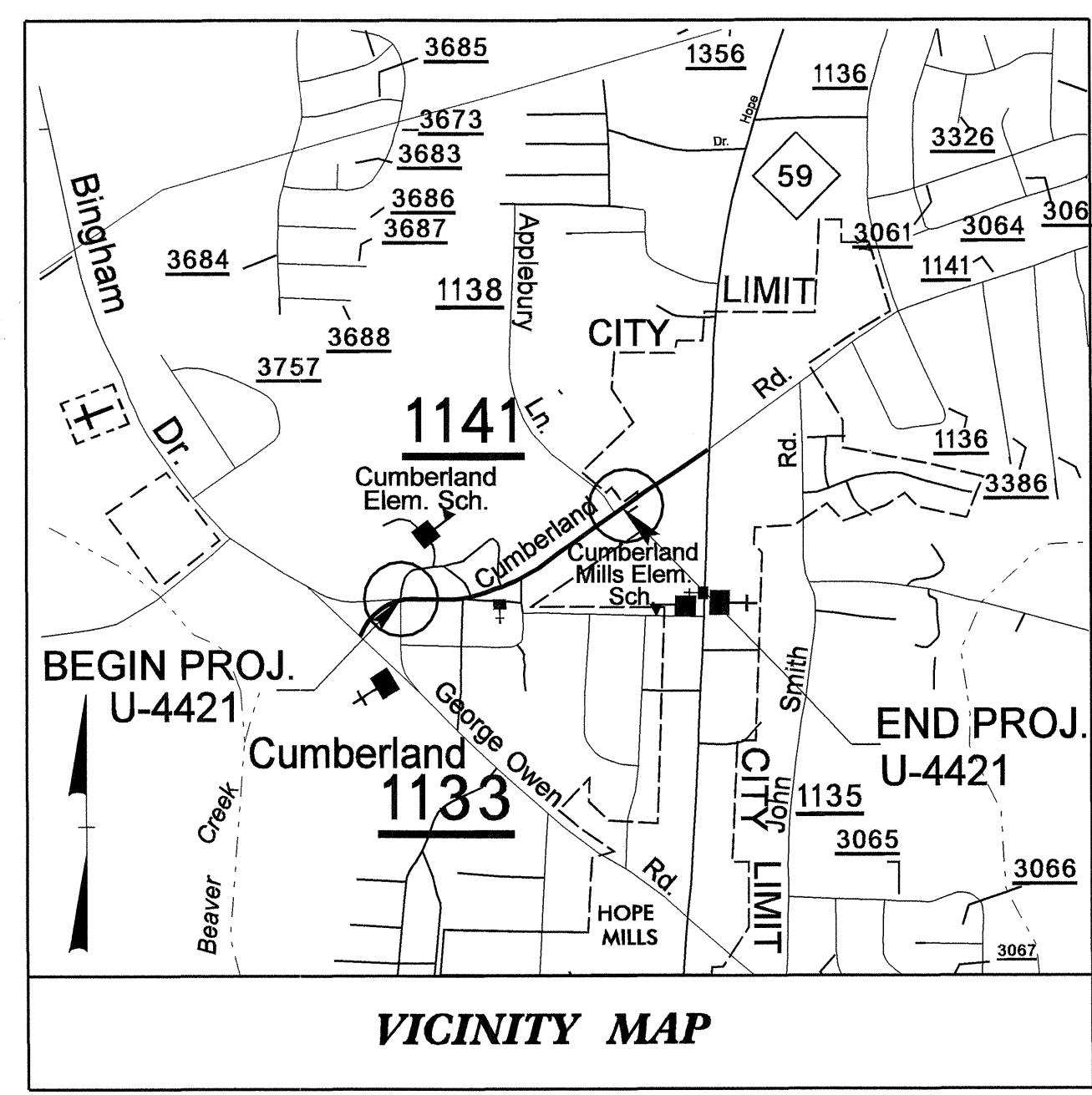
T.I.P. NO.	SHEET NO.
U-4421	UO-1

STATE OF NORTH CAROLINA
DIVISION OF HIGHWAYS

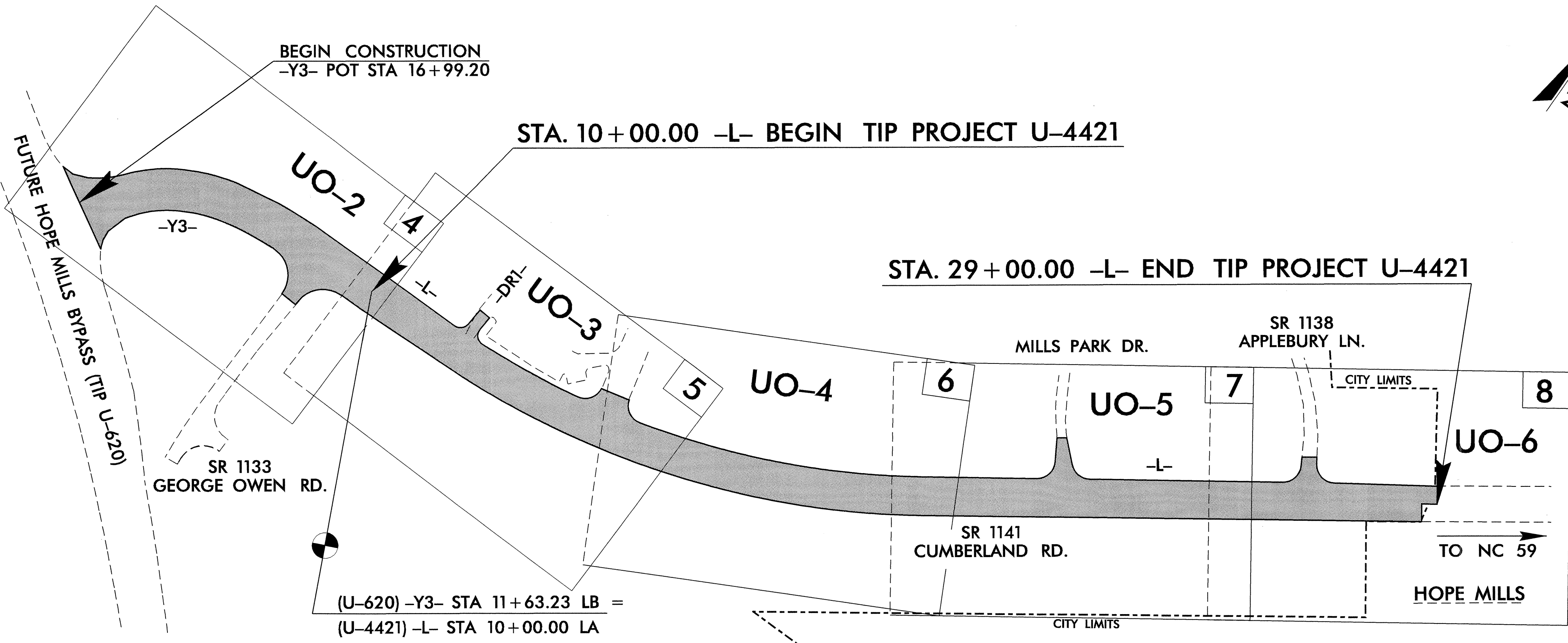
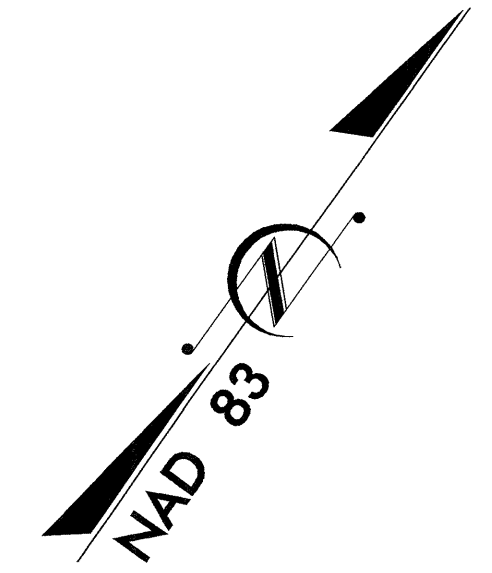
**UTILITY BY OTHERS PLANS
CUMBERLAND COUNTY**

**LOCATION: SR 1141 (CUMBERLAND RD), FROM SR 1133
(GEORGE OWEN RD) TO WEST OF NC 59 (HOPE MILLS RD.)**

TYPE OF WORK: UTILITIES BY OTHERS

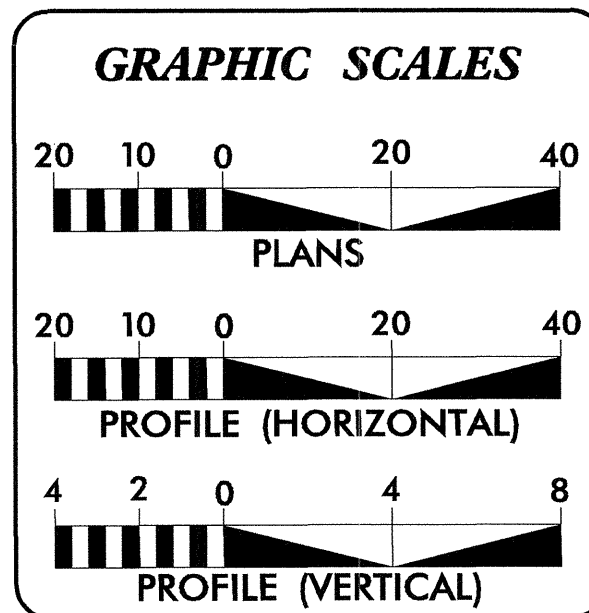


VICINITY MAP



TIP: U-4421

CONTRACT: C201245



INDEX OF SHEETS	
SHEET NO.	DESCRIPTION
UO-1	TITLE SHEET
UO-2 THRU UO-6	UTILITY BY OTHERS PLAN SHEETS

- UTILITY OWNERS ON PROJECT**
- (1) PROGRESS ENERGY CORP. - POWER (DISTRIBUTION)
 - (2) TIME WARNER CABLE - CABLE TV
 - (3) SPRINT - TELEPHONE
 - (4) N.C. NATURAL GAS COMPANY

PREPARED IN THE OFFICE OF:
**DIVISION OF HIGHWAYS
PROJECT SERVICES
UTILITY SECTION**

1591 MAIL SERVICES CENTER
RALEIGH NC 27699-1591
PHONE (919) 250-4128
FAX (919) 250-4119

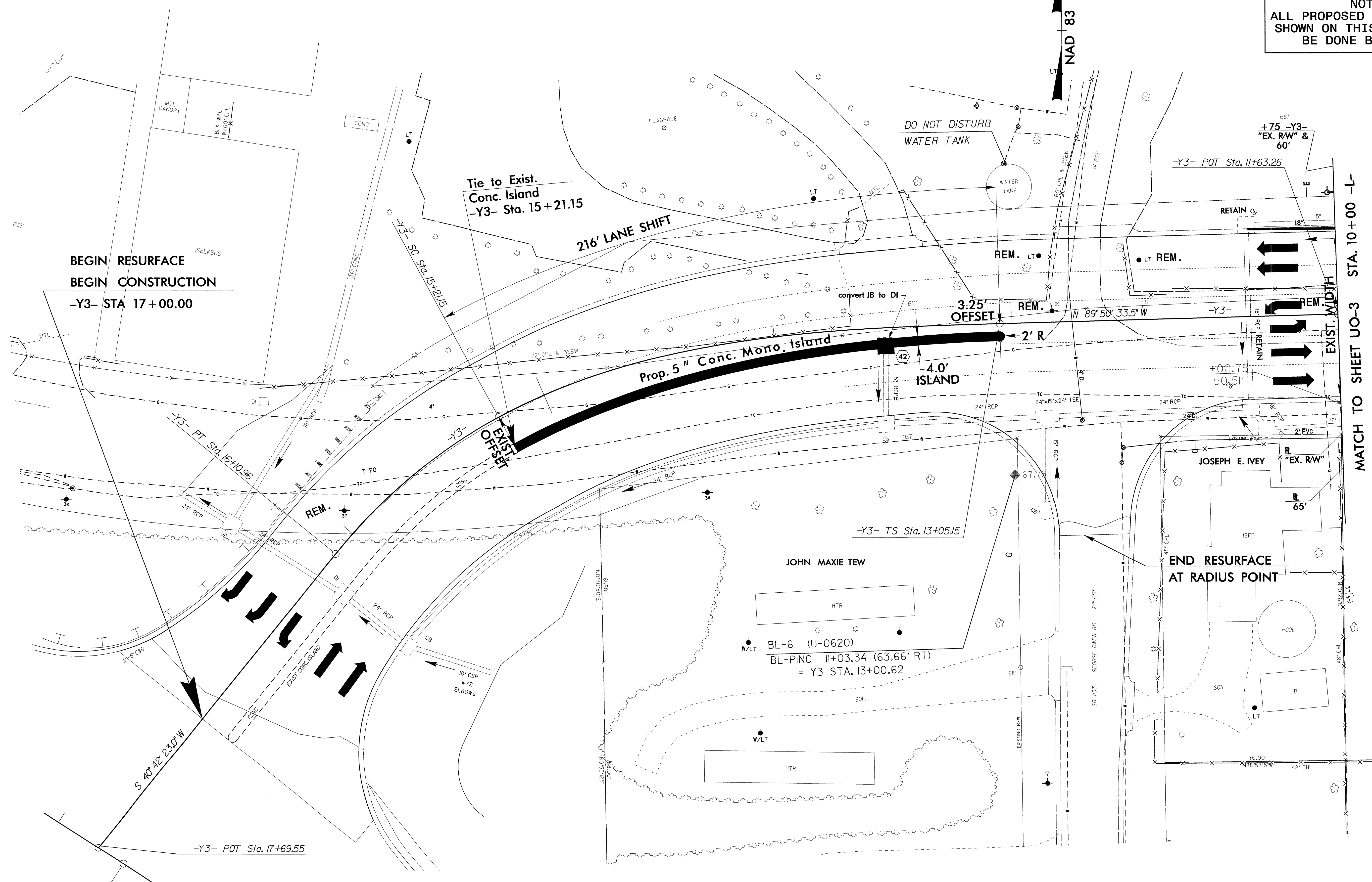
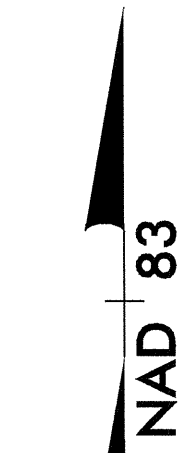
Roger Worthington, P.E.	UTILITIES SECTION ENGINEER
R. B. Wilkins, P.E.	UTILITIES SQUAD LEADER PROJECT ENGINEER
John A. Nigro, P.E.	UTILITIES PROJECT DESIGNER

09-JAN-2007 08:32
F:\utility\res\nc\ut\proj\U4421\ut_title_uol_psh.dgn
\$\$\$\$\$USERNAME\$\$\$\$\$

UTILITIES BY OTHERS

NOTE: ALL PROPOSED UTILITY WORK SHOWN ON THIS SHEET WILL BE DONE BY OTHERS

8/17/99



BEGIN RESURFACE
BEGIN CONSTRUCTION
-Y3- STA 17+00.00

Tie to Exist.
Conc. Island
-Y3- Sta. 15+21.15

216' LANE SHIFT

Prop. 5" Conc. Mono. Island

DO NOT DISTURB
WATER TANK

+75 -Y3-
"EX. RW" &
60'

-Y3- POT Sta. 11+63.26

MATCH TO SHEET U0-3 STA. 10+00 -L-

END RESURFACE
AT RADIUS POINT

-Y3- TS Sta. 13+05.15

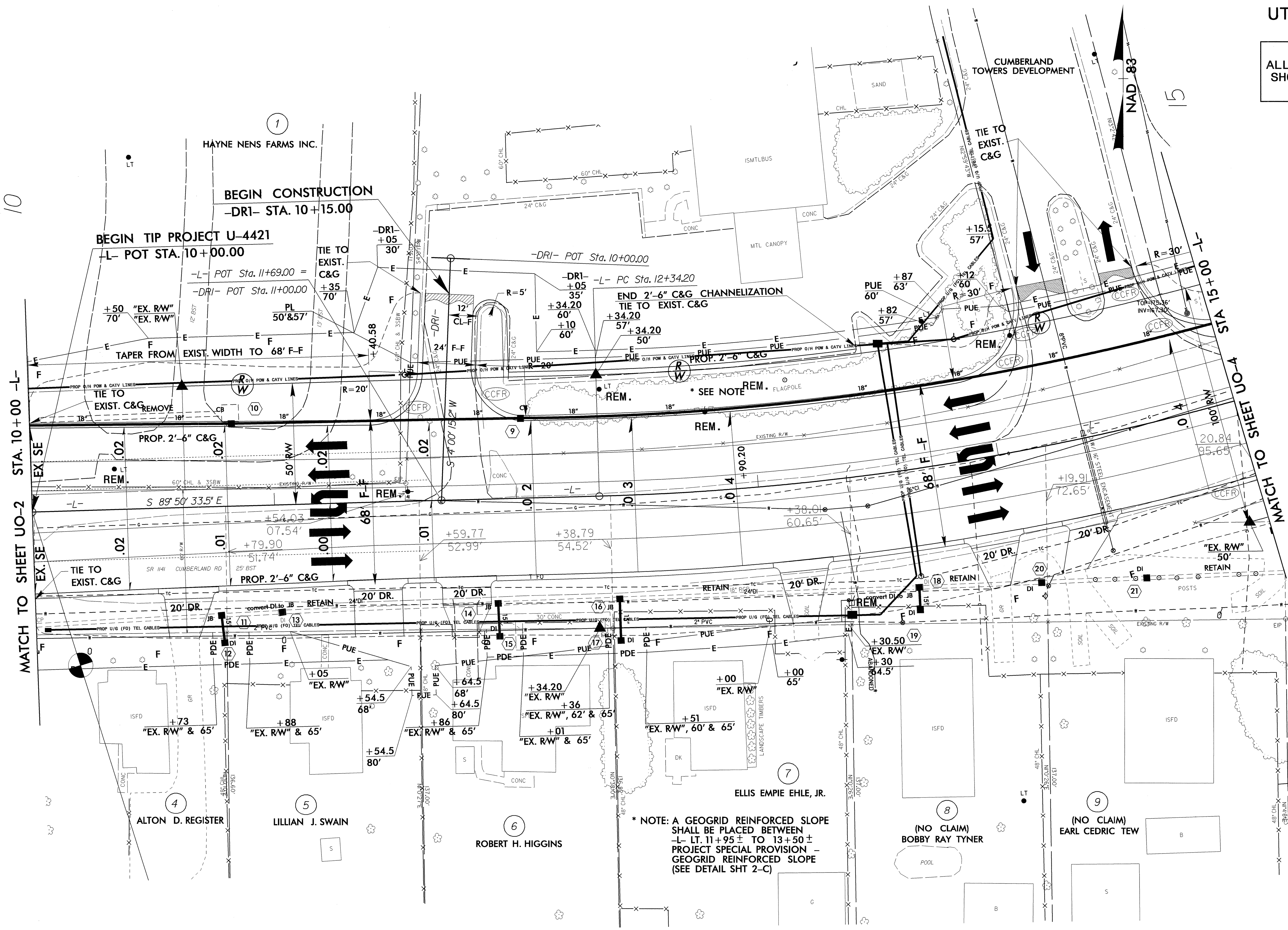
BL-6 (U-0620)
BL-PINC 11+03.34 (63.66' RT)
= Y3 STA. 13+00.62

-Y3- POT Sta. 17+69.55

09-JAN-2007 08:33
r:\utilities\vr\ut\proj\4421\ut_4_uc2_psh.dgn

UTILITIES BY OTHERS

NOTE:
ALL PROPOSED UTILITY WORK
SHOWN ON THIS SHEET WILL
BE DONE BY OTHERS

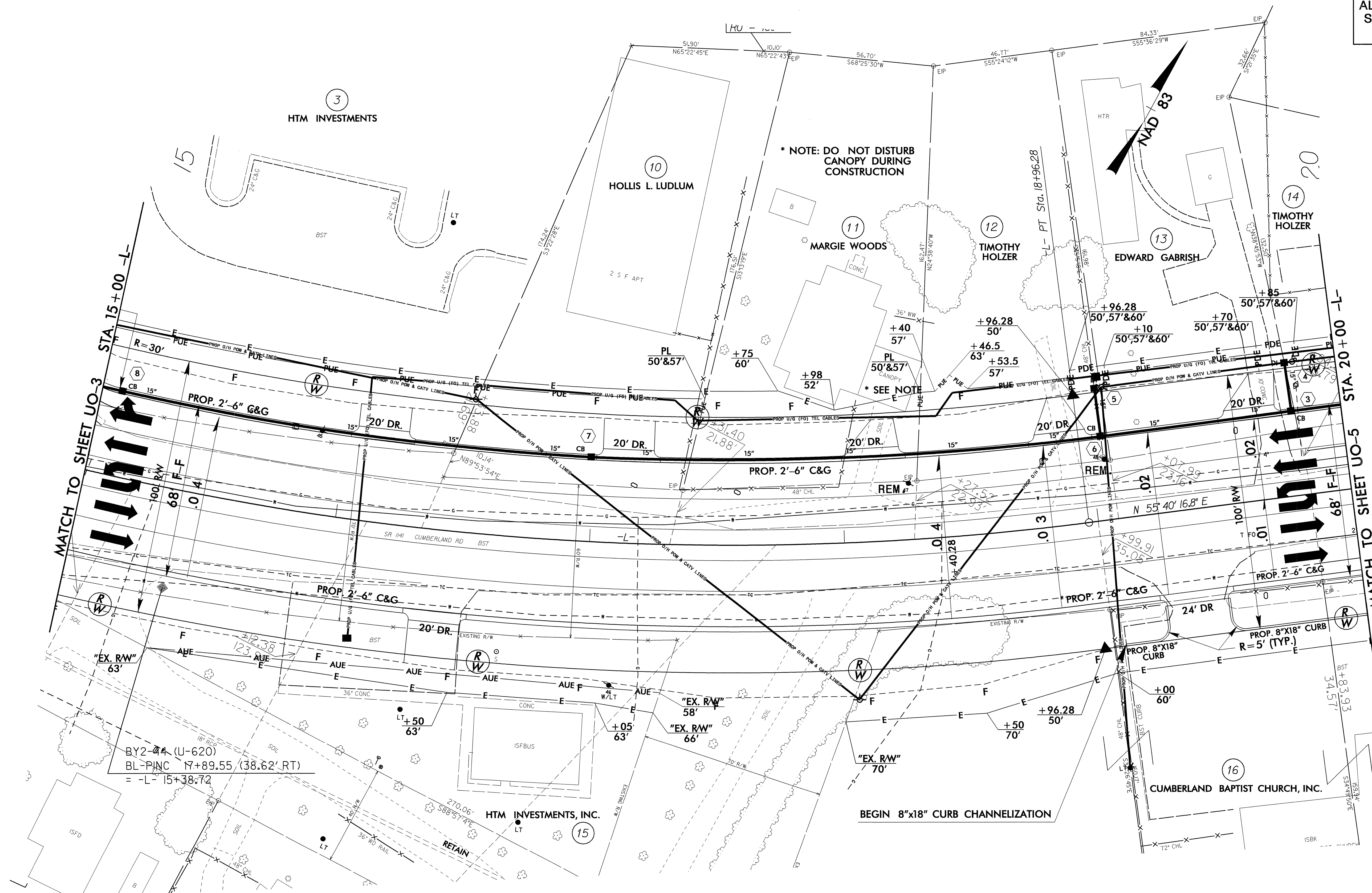


* NOTE: A GEOGRID REINFORCED SLOPE SHALL BE PLACED BETWEEN -L- LT. 11+95 ± TO 13+50 ± PROJECT SPECIAL PROVISION - GEOGRID REINFORCED SLOPE (SEE DETAIL SHT 2-C)

08-JAN-2007 14:23
 P:\UTILITIES\PROJECTS\U-4421\UT-5-uo3-psh.dgn
 8/17/99

UTILITIES BY OTHERS

NOTE:
ALL PROPOSED UTILITY WORK
SHOWN ON THIS SHEET WILL
BE DONE BY OTHERS



MATCH TO SHEET UO-3
STA 15+00 -L-

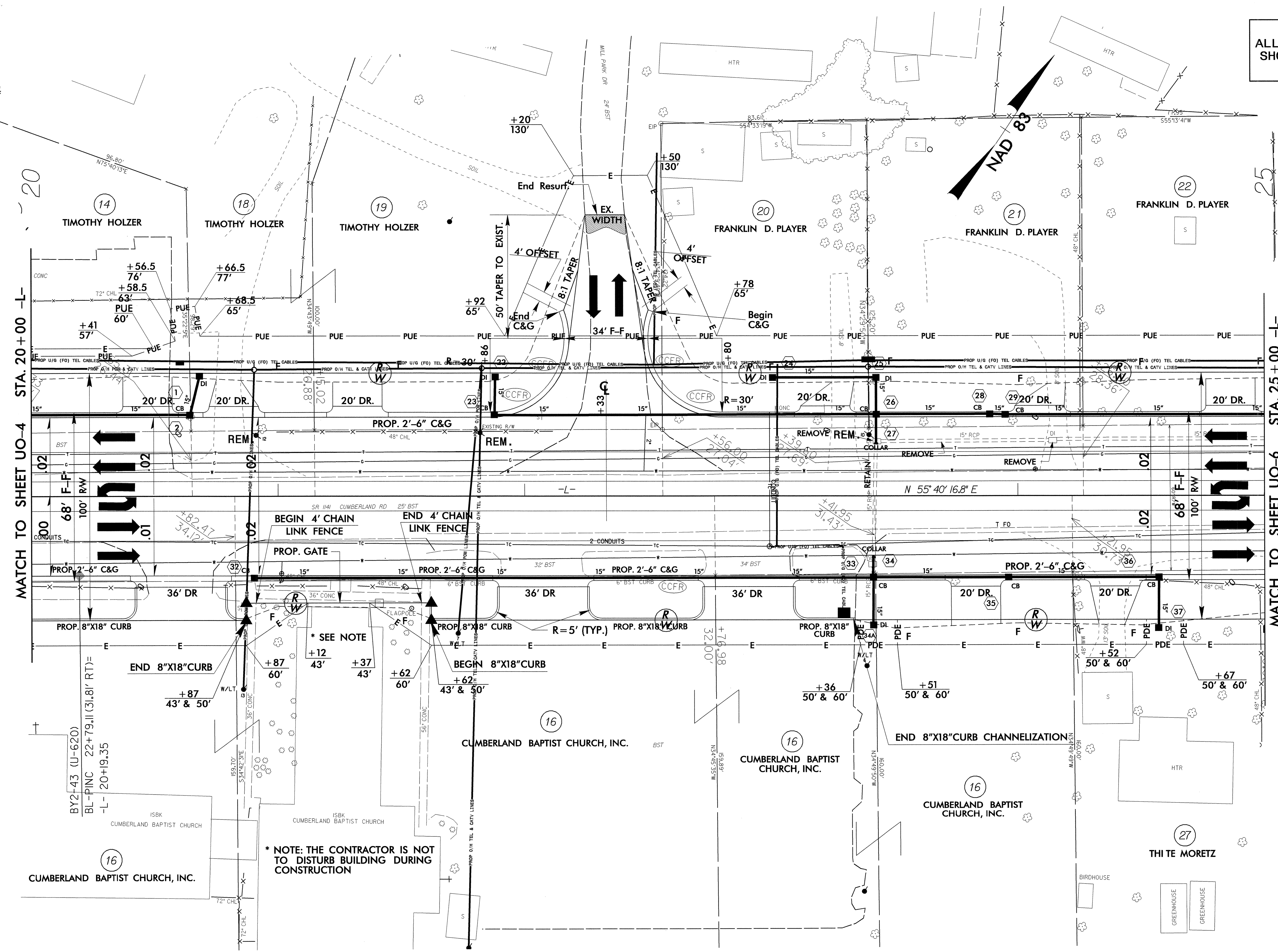
MATCH TO SHEET UO-5
STA 20+00 -L-

BY2-44 (U-620)
BL-PINC 17+89.55 (38.62' RT)
=-L- 15+38.72

BEGIN 8"x18" CURB CHANNELIZATION

UTILITIES BY OTHERS

NOTE:
ALL PROPOSED UTILITY WORK
SHOWN ON THIS SHEET WILL
BE DONE BY OTHERS



MATCH TO SHEET UO-4 STA. 20+00 -L-

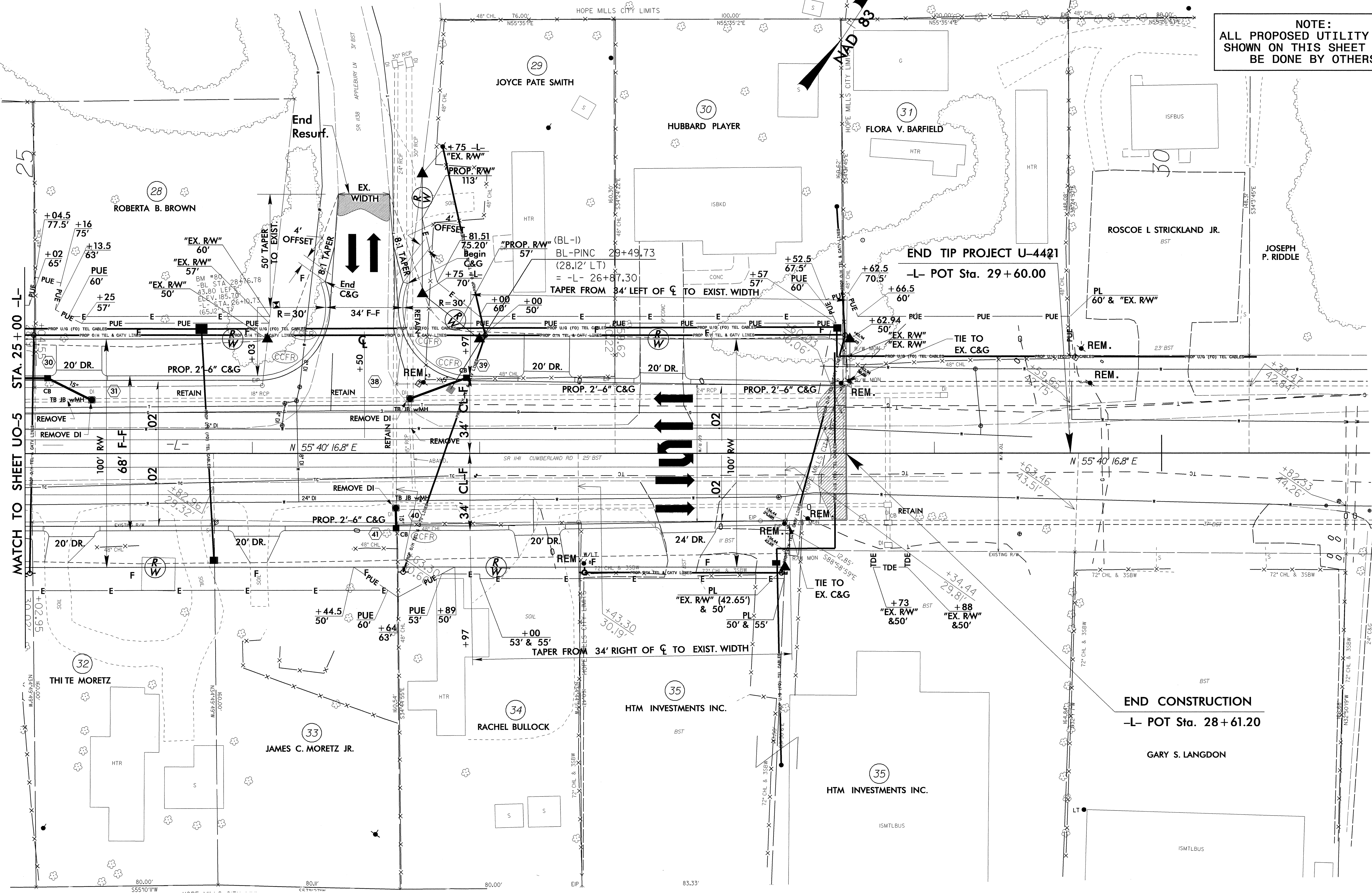
MATCH TO SHEET UO-6 STA. 25+00 -L-

* NOTE: THE CONTRACTOR IS NOT TO DISTURB BUILDING DURING CONSTRUCTION

08-JAN-2007 14:27 r:\utilities\utility\proj\4421\ut_7_uo5_psh.dgn

UTILITIES BY OTHERS

NOTE:
ALL PROPOSED UTILITY WORK
SHOWN ON THIS SHEET WILL
BE DONE BY OTHERS



8/17/99
 08-JAN-2007 14:28
 C:\utilities\psh\ut\proj\U4421\ut_8_u06_psh.dgn
 33 34 35 36 37 38 39 40 41 42 43 44 45 46 47 48 49 50 51 52 53 54 55 56 57 58 59 60 61 62 63 64 65 66 67 68 69 70 71 72 73 74 75 76 77 78 79 80 81 82 83 84 85 86 87 88 89 90 91 92 93 94 95 96 97 98 99 100