

PLAN FOR PROPOSED TRAFFIC CONTROL, MARKING & DELINEATION BUNCOMBE COUNTY

U-4715AB

TIP PROJECT:

ROADWAY STANDARD DRAWINGS

THE FOLLOWING ROADWAY STANDARDS AS APPEAR IN "ROADWAY STANDARD DRAWINGS"-
PROJECT SERVICES UNIT-N.C. DEPARTMENT OF TRANSPORTATION-RALEIGH, N.C.,
DATED JULY 2006 ARE APPLICABLE TO THIS PROJECT AND BY REFERENCE HEREBY ARE
CONSIDERED A PART OF THESE PLANS:

STD. NO.	TITLE
1101.02	TEMPORARY LANE CLOSURES
1101.03	TEMPORARY ROAD CLOSURES
1101.11	TRAFFIC CONTROL DESIGN TABLES
1110.02	PORTABLE WORK ZONE SIGNS
1115.01	FLASHING ARROW PANELS
1130.01	DRUM
1135.01	CONES
1145.01	BARRICADES
1150.01	FLAGGING DEVICES
1165.01	TRUCK MOUNTED IMPACT ATTENUATOR
1180.01	SKINNY-DRUM
1205.01	PAVEMENT MARKINGS - LINE TYPES AND OFFSETS
1205.04	PAVEMENT MARKINGS - INTERSECTIONS
1205.05	PAVEMENT MARKINGS - TURN LANES
1205.06	PAVEMENT MARKINGS - THRU LANE DROPS
1205.07	PAVEMENT MARKINGS - PEDESTRIAN CROSSWALKS
1205.08	PAVEMENT MARKINGS - SYMBOLS AND WORD MESSAGES

INDEX OF SHEETS

SHEET NO.	TITLE
TCP-1	LIST OF APPLICABLE ROADWAY STANDARD DRAWINGS, PHASING, INDEX OF SHEETS AND PAVEMENT MARKING SCHEDULE
TCP-2	GENERAL NOTES
TCP-3	TYPICAL DRAWING FOR SIDEWALK CLOSURES
TCP-4	DETAIL OF TEMPORARY 1" STEEL COVER OVER DRAINAGE STRUCTURE

PHASING

STEP 1: PERFORM ALL WORK ASSOCIATED WITH THE INSTALLATION OF THE PROPOSED
SIGNALS AND TRAFFIC MANAGEMENT SYSTEM AS SHOWN IN THE CONTRACT,
CONSTRUCTION PLANS AND/OR SPECIAL PROVISIONS IN ACCORDANCE WITH
THE "NCDOT STANDARD SPECIFICATIONS FOR ROADS AND STRUCTURES - JULY
2006" AND USING THE FOLLOWING ROADWAY STANDARD DRAWINGS:

B: CONSTRUCT PROPOSED OR REMOVE EXISTING STRUCTURE AS SHOWN IN
THE SIGNAL PLANS AND COVER WITH STEEL PLATES (SEE SHEET
TCP-4) TO PROTECT STRUCTURE DURING CURING OR EXCAVATION AREA.

C: OPEN TRAVEL LANE OR SIDEWALK TO EXISTING TRAFFIC PATTERN
BY THE END OF EACH WORK PERIOD.

D: WHEN PROPERLY CURED, CLOSE THE APPROPRIATE TRAVEL LANE USING
ROADWAY STANDARD DRAWING NO. 1101.02, SHEETS 1, 2 & 3 OF 9;

OR

USING SHEET TCP-3 AS A GUIDE, AND AS DIRECTED BY THE
ENGINEER CLOSE THE APPROPRIATE SIDEWALK UTILIZING TYPE III
BARRICADES WITH SIGNS ATTACHED;

BACKFILL & PAVE, IF REQUIRED, UP TO THE EDGE AND ELEVATION OF
EXISTING PAVEMENT OR SIDEWALK (SEE SIGNAL PLANS).

E: OPEN TRAVEL LANE OR SIDEWALK TO EXISTING TRAFFIC PATTERN BY
THE END OF THE WORK PERIOD.

STEP 2: UPON COMPLETION OF THE PROJECT, REMOVE ALL TRAFFIC CONTROL DEVICES.

R.S.D. 1101.02,	SHEET 1 OF 9
R.S.D. 1101.02,	SHEET 2 OF 9
R.S.D. 1101.02,	SHEET 3 OF 9
R.S.D. 1101.02,	SHEET 4 OF 9
R.S.D. 1101.02,	SHEET 5 OF 9
R.S.D. 1101.03,	SHEET 8 OF 9
R.S.D. 1101.03,	SHEET 9 OF 9

NOTE: INSTALL CHANGEABLE MESSAGE SIGNS IN ADVANCE OF THE PORTABLE
WORK ZONE AS DIRECTED BY THE ENGINEER.

NOTE: REMOVE ALL TEMPORARY TRAFFIC CONTROL LANE CLOSURE DEVICES
AND RETURN TRAFFIC TO IT'S EXISTING TRAFFIC PATTERN AT THE END
OF EACH WORK PERIOD.

NOTE: WHEN CONSTRUCTING/REMOVING SIGNAL POLE STRUCTURES OR FOOTINGS
ADJACENT TO TRAFFIC OR SIDEWALKS, INSTALL TEMPORARY STEEL PLATES
(SEE SHEET TCP-4), AS DIRECTED BY THE ENGINEER. MAY WORK EACH
LOCATION INDEPENDENTLY OR CONCURRENTLY, UNLESS OTHERWISE DIRECTED
BY THE ENGINEER. WORK IN A CONTINUOUS MANNER TO PERFORM THE WORK
IN THE FOLLOWING SEQUENCE, IN STEPS 'A' THRU 'E'.

A: CLOSE THE APPROPRIATE TRAVEL LANE TO TRAFFIC USING ROADWAY
STANDARD DRAWING NO. 1101.02 SHEETS 1, 2 & 3 OF 9.

OR

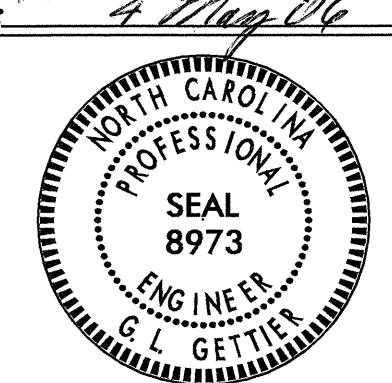
USING SHEET TCP-3 AS A GUIDE, AND AS DIRECTED BY THE ENGINEER
CLOSE THE APPROPRIATE SIDEWALK UTILIZING TYPE III BARRICADES
WITH SIGNS ATTACHED.

PAVEMENT MARKING SCHEDULE

SYMBOL	DESCRIPTION	PAY ITEM QUANTITY		TOTAL QUANTITY
		BREAKDOWN		
FINAL PAVEMENT MARKINGS				
THERMOPLASTIC (24", 120 MILS)				
T2	WHITE STOPBAR	300	LF	
				TOTAL
				300 LF
THERMOPLASTIC PAVEMENT MARKING SYMBOLS (90 MILS)				
UA	LEFT TURN ARROW	1	EA	
UC	STRAIGHT ARROW	1	EA	
UE	COMBO. STRAIGHT/RIGHT	1	EA	
				TOTAL
				3 EA

APPROVED: _____
DATE: _____

SEAL



PLAN PREPARED BY: N.C.D.O.T. WORK ZONE TRAFFIC CONTROL UNIT

J. S. BOURNE, P.E. TRAFFIC CONTROL ENGINEER

G. L. GETTIER, P.E. TRAFFIC CONTROL PROJECT ENGINEER

J. W. GILSTRAP TRAFFIC CONTROL PROJECT DESIGN ENGINEER

KEN BROADWELL TRAFFIC CONTROL DESIGN ENGINEER

GENERAL NOTES

PROJ. REFERENCE NO. U-4715AB	SHEET NO. TCP-2
---------------------------------	--------------------

ADAPT THE TRAFFIC CONTROL PLANS, WHEN DIRECTED BY THE ENGINEER, TO MEET FIELD CONDITIONS TO PROVIDE SAFE AND EFFICIENT TRAFFIC MOVEMENT. CHANGES MAY BE REQUIRED WHEN PHYSICAL DIMENSIONS IN THE DETAIL DRAWINGS, STANDARD DETAILS AND ROADWAY DETAILS ARE NOT ATTAINABLE, OR RESULT IN DUPLICATE, OR UNDESIRABLE OVERLAPPING OF DEVICES. MODIFICATION MAY INCLUDE: MOVING, SUPPLEMENTING, COVERING OR REMOVAL OF DEVICES.

THE FOLLOWING GENERAL NOTES APPLY AT ALL TIMES FOR THE DURATION OF THE CONSTRUCTION PROJECT, EXCEPT WHEN OTHERWISE NOTED IN THE PLAN, OR DIRECTED BY THE ENGINEER.

TIME RESTRICTIONS

A) DO NOT CLOSE OR NARROW TRAVEL LANES AS FOLLOWS:

ROAD NAME	DAY AND TIME RESTRICTIONS
1. PATTON AVENUE	MONDAY THRU FRIDAY
2. COLLEGE STREET	3:00 PM TO 6:00 PM

B) DO NOT CLOSE OR NARROW TRAVEL LANES DURING HOLIDAYS AND SPECIAL EVENTS AS FOLLOWS:

ROAD NAME
1. PATTON AVENUE
2. COLLEGE STREET

HOLIDAY

1. FOR ANY EVENT THAT CREATES UNUSUALLY HIGH TRAFFIC VOLUMES, AS DIRECTED BY THE ENGINEER.
2. FOR ANY SPECIAL EVENT OCCURRING BETWEEN 3 HOURS BEFORE THE START AND 3 HOURS AFTER THE END OF THE SPECIAL EVENT, AS DIRECTED BY THE ENGINEER.

C) DO NOT STOP TRAFFIC OR CLOSE ROADS AS FOLLOWS:

ROAD NAME	DAY AND TIME RESTRICTIONS
1. PATTON AVENUE	MONDAY THRU SUNDAY
2. COLLEGE STREET	6:00 AM TO 10:00 PM

D) DO NOT STOP TRAFFIC FOR MORE THAN 30 MINUTES AS FOLLOWS:

ROAD NAME	OPERATIONS
1. PATTON AVENUE	HANGING OVERHEAD LINES
2. COLLEGE STREET	AND ASSOCIATED SIGNAL EQUIPMENT

E) DO NOT CONDUCT ANY HAULING OPERATIONS AGAINST THE FLOW OF TRAFFIC OF AN OPEN TRAVELWAY UNLESS THE WORK AREA IS PROTECTED BY BARRIER OR GUARDRAIL OR OTHERWISE DIRECTED BY THE ENGINEER.

LANE AND SHOULDER CLOSURE REQUIREMENTS

F) REMOVE LANE CLOSURE DEVICES FROM THE LANE WHEN WORK IS NOT BEING PERFORMED BEHIND THE LANE CLOSURE OR WHEN A LANE CLOSURE IS NO LONGER NEEDED, OR AS DIRECTED BY THE ENGINEER.

G) WHEN PERSONNEL AND/OR EQUIPMENT ARE WORKING ON THE SHOULDER ADJACENT TO AN UNDIVIDED FACILITY AND WITHIN 5 FT OF AN OPEN TRAVEL LANE, CLOSE THE NEAREST OPEN TRAVEL LANE USING ROADWAY STANDARD DRAWING NO. 1101.02 UNLESS THE WORK AREA IS PROTECTED BY BARRIER OR GUARDRAIL.

WHEN PERSONNEL AND/OR EQUIPMENT ARE WORKING ON THE SHOULDER ADJACENT TO A DIVIDED FACILITY AND WITHIN 10 FT OF AN OPEN TRAVEL LANE, CLOSE THE NEAREST OPEN TRAVEL LANE USING ROADWAY STANDARD DRAWING NO. 1101.02 UNLESS THE WORK AREA IS PROTECTED BY BARRIER OR GUARDRAIL.

H) WHEN PERSONNEL AND/OR EQUIPMENT ARE WORKING WITHIN A LANE OF TRAVEL OF AN UNDIVIDED OR DIVIDED FACILITY, CLOSE THE LANE ACCORDING TO THE TRAFFIC CONTROL PLANS, ROADWAY STANDARD DRAWINGS OR AS DIRECTED BY THE ENGINEER. CONDUCT THE WORK SO THAT ALL PERSONNEL AND/OR EQUIPMENT REMAIN WITHIN THE CLOSED TRAVEL LANE.

- I) DO NOT WORK SIMULTANEOUSLY, ON BOTH SIDES OF AN OPEN TRAVELWAY WITHIN THE SAME LOCATION, ON A TWO-LANE, TWO-WAY ROAD.
- J) DO NOT PERFORM WORK INVOLVING HEAVY EQUIPMENT WITHIN 15 FT OF THE EDGE OF TRAVELWAY WHEN WORK IS BEING PERFORMED BEHIND A LANE CLOSURE ON THE OPPOSITE SIDE OF THE TRAVELWAY.

PAVEMENT EDGE DROP OFF REQUIREMENTS

K) BACKFILL AT A 6:1 SLOPE UP TO THE EDGE AND ELEVATION OF EXISTING PAVEMENT IN AREAS ADJACENT TO AN OPENED TRAVEL LANE THAT HAS A DROP-OFF AS FOLLOWS:

BACKFILL DROP-OFFS THAT EXCEED 2 INCHES ON ROADWAYS WITH POSTED SPEED LIMITS OF 45 MPH OR GREATER.

BACKFILL DROP-OFFS THAT EXCEED 3 INCHES ON ROADWAYS WITH POSTED SPEED LIMITS LESS THAN 45 MPH.

BACKFILL WITH SUITABLE COMPACTED MATERIAL, AS APPROVED BY THE ENGINEER, AT NO EXPENSE TO THE DEPARTMENT.

TRAFFIC PATTERN ALTERATIONS

L) NOTIFY THE ENGINEER TWENTY ONE (21) CALENDAR DAYS PRIOR TO ANY TRAFFIC PATTERN ALTERATION.

SIGNING

M) ENSURE ALL NECESSARY SIGNING IS IN PLACE PRIOR TO ALTERING ANY TRAFFIC PATTERN.

TRAFFIC CONTROL DEVICES

N) SPACE CHANNELIZING DEVICES IN WORK AREAS NO GREATER THAN TWICE THE POSTED SPEED LIMIT (MPH), EXCEPT 10 FT ON-CENTER IN RADIUS, AND 3 FT OFF THE EDGE OF AN OPEN TRAVELWAY, WHEN LANE CLOSURES ARE NOT IN EFFECT.

O) PLACE SETS OF THREE DRUMS PERPENDICULAR TO THE EDGE OF THE TRAVELWAY ON 500 FT CENTERS WHEN UNOPENED LANES ARE CLOSED TO TRAFFIC. THESE DRUMS SHALL BE IN ADDITION TO CHANNELIZING DEVICES.

PAVEMENT MARKINGS AND MARKERS

P) INSTALL PAVEMENT MARKINGS AND PAVEMENT MARKERS ON THE FINAL SURFACE AS FOLLOWS:

ROAD NAME	MARKING	MARKER
ALL ROADS	THERMOPLASTIC	NONE

Q) TIE PROPOSED PAVEMENT MARKING LINES TO EXISTING PAVEMENT MARKING LINES.

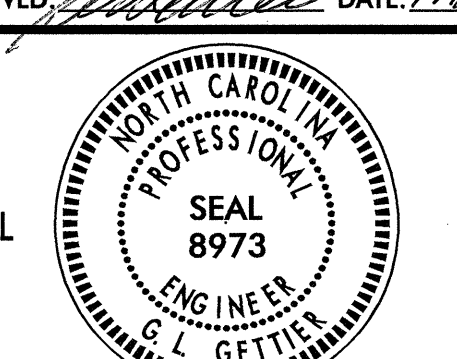

R) REPLACE ANY PAVEMENT MARKINGS THAT HAVE BEEN DAMAGED BY THE END OF EACH DAY'S OPERATION.

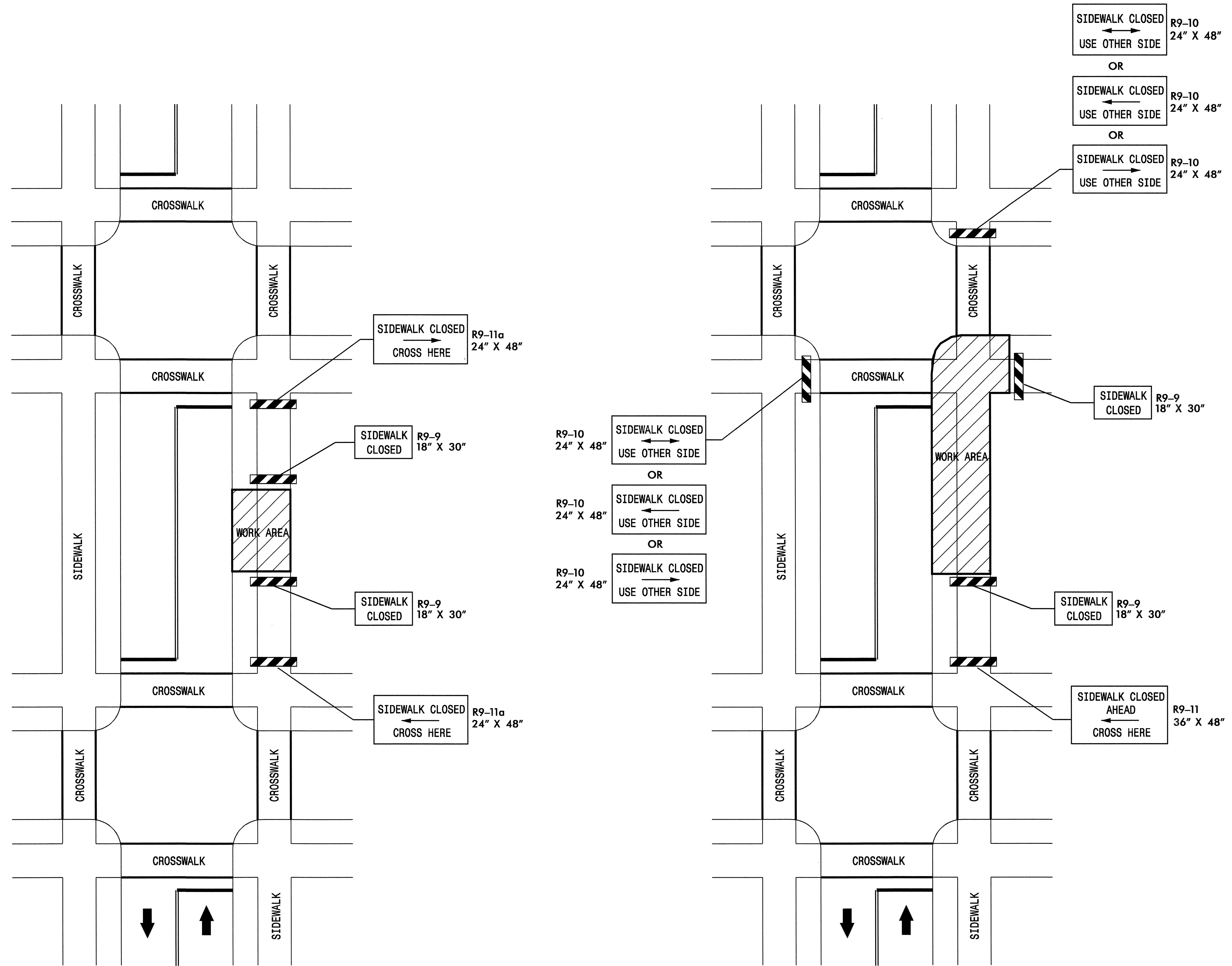
S) REMOVE ALL CONFLICTING PAVEMENT MARKINGS BY THE END OF EACH DAY'S OPERATION.

MISCELLANEOUS

T) POLICE MAY BE USED TO MAINTAIN TRAFFIC THROUGH INTERSECTIONS.

30-NOV-2006 11:33
 \\dot\dfsproj\T01\Proj\TrafficControl\tr\trafficcontrol\top\U-4715ab-tc-top-top-l.dgn
 kbrodwell AT WZT224240

APPROVED: DATE: 5/10/06 			<h2 style="margin: 0;">PROJECT NOTES</h2>					
SCALE: NONE DATE: MAY 2006 DWG. BY: KPB DESIGN BY: KPB REVIEWED BY: JWG		REVISIONS <table border="1" style="width: 100%; border-collapse: collapse;"> <tr> <td style="width: 20px; height: 15px;"></td> <td style="width: 40px;"></td> </tr> <tr> <td style="width: 20px; height: 15px;"></td> <td style="width: 40px;"></td> </tr> <tr> <td style="width: 20px; height: 15px;"></td> <td style="width: 40px;"></td> </tr> </table>						



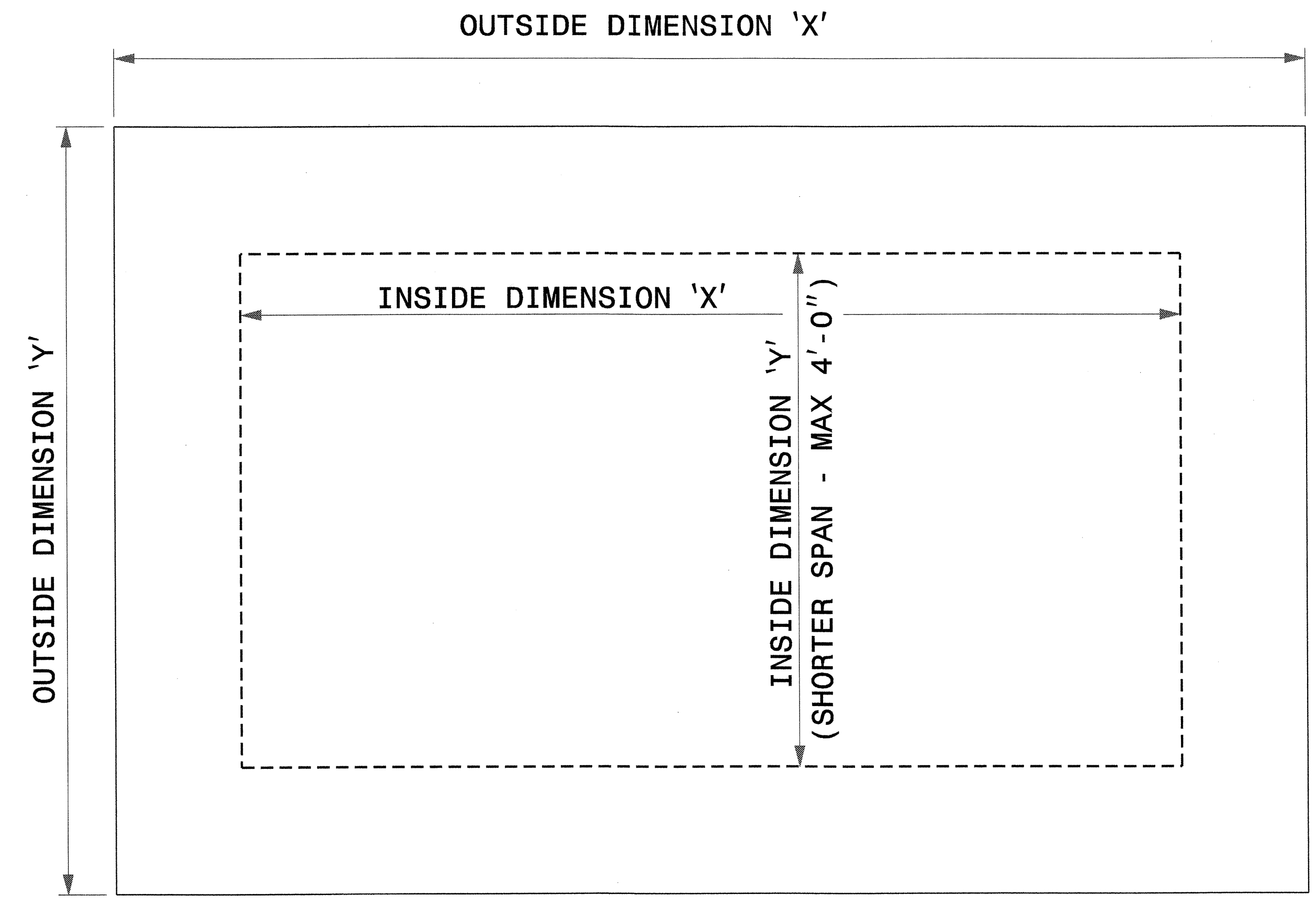
LEGEND

- TYPE III BARRICADE

APPROVED:	DATE: 4-MAY-06	TYPICAL DRAWING FOR SIDEWALK CLOSURES									
				SCALE: NONE	<table border="1"> <tr><th colspan="2">REVISIONS</th></tr> <tr><td> </td><td> </td></tr> <tr><td> </td><td> </td></tr> <tr><td> </td><td> </td></tr> </table>	REVISIONS					
		REVISIONS									
		DATE: MAY 2006									
		DWG. BY: KPB									
		DESIGN BY: KPB	REVISIONS								
		REVIEWED BY: JWG	CADD FILE								

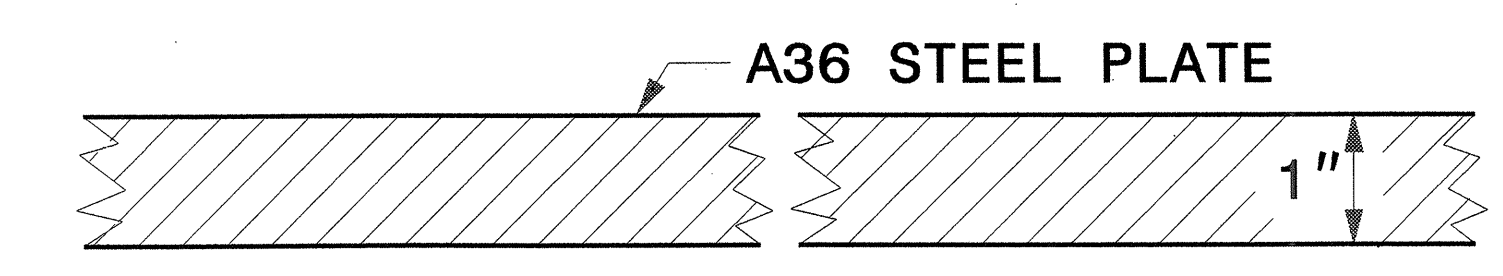
30-NOV-2006 11:33
 \\p01\dfs\proj\4715ab\tr\files\tr\traffic\control\tcp\U-4715ab-fe_tcp-1.dgn
 kbr\oadwell AT WZTC24240

5/14/99
I9-APR-2006 14:28
s:\contracts\contract\special_details\nbritt\english\misc\steel\steel cover.dgn
rnbritt AT PS228331



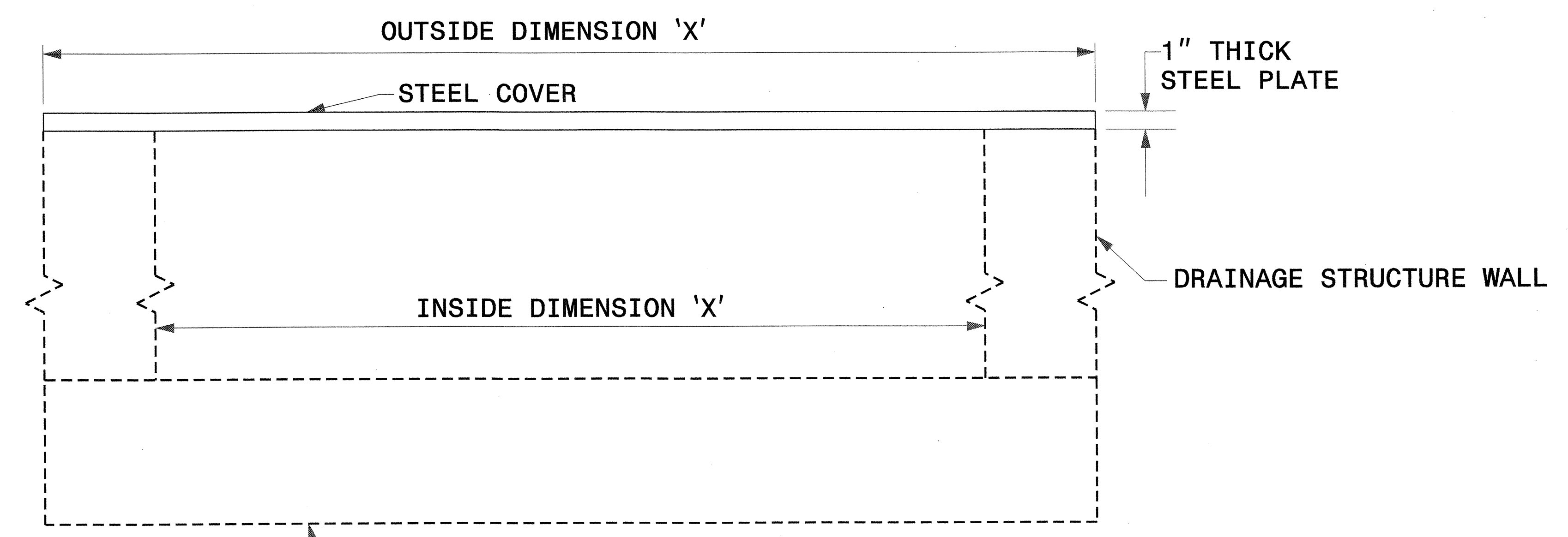
GENERAL NOTES:

- USE GRADE A36 STEEL
- STEEL COVERS ARE FOR TEMPORARY USE DURING PHASE CONSTRUCTION.
- FILL SHALL BE PLACED DIRECTLY OVER THE STEEL PLATES.
- QUANTITIES TO BE PAID FOR AT THE UNIT PRICE BID PER EACH.



SECTION VIEW OF STEEL TOP PLATE

PLAN VIEWS



ELEVATION VIEWS



**PROJECT SERVICES UNIT
STANDARDS AND SPECIAL DESIGN**
Office 919-250-4128 FAX 919-250-4119

**DETAIL OF TEMPORARY
1" STEEL COVER
OVER DRAINAGE STRUCTURE**

ORIGINAL BY: _____ DATE: _____
 MODIFIED BY: rnbritt DATE: 04-19-06
 CHECKED BY: [Signature] DATE: 4/19/06
 FILE SPEC.: details/nbritt/english/misc/steelcover.dgn