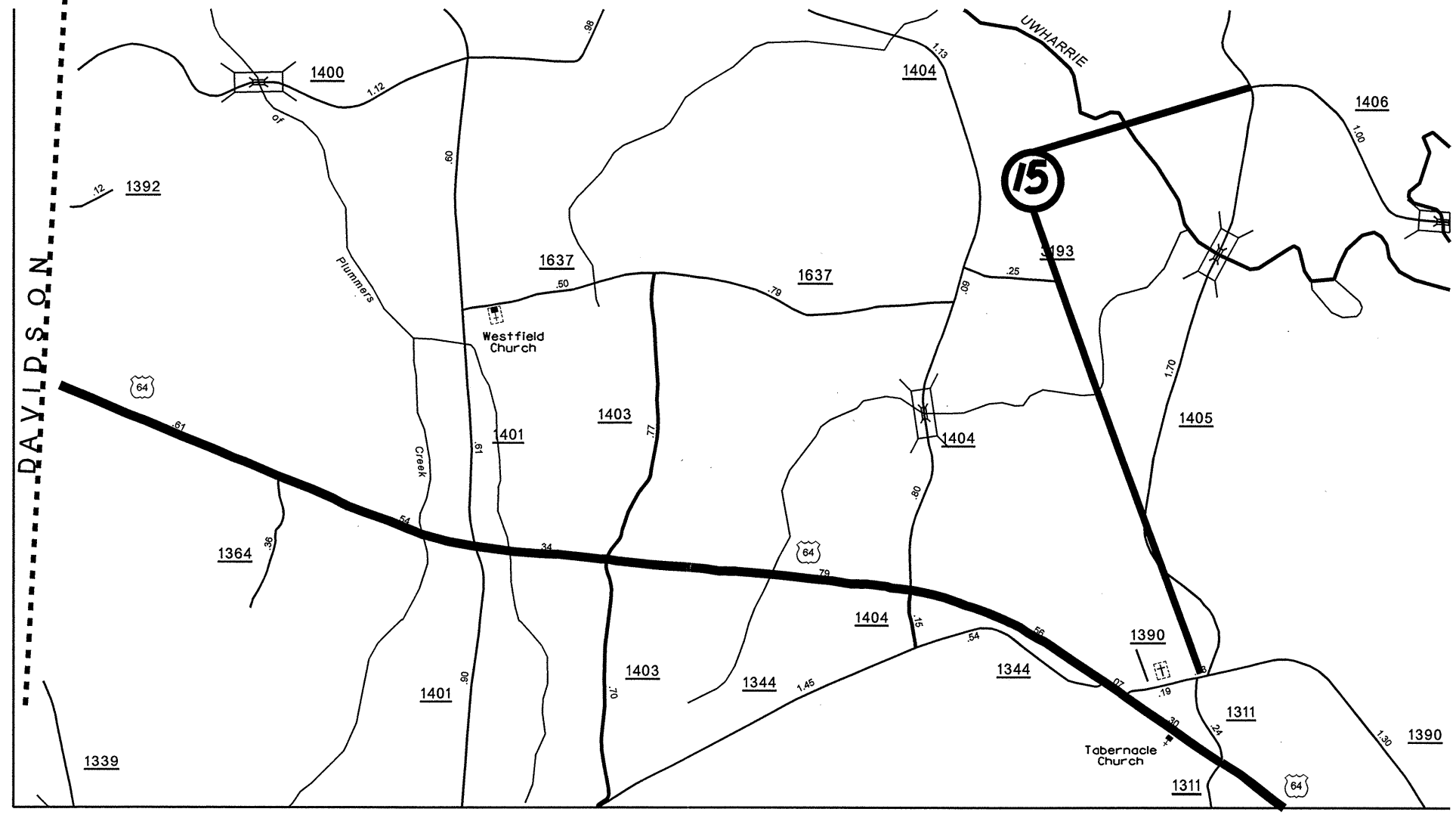
  
**RANDOLPH COUNTY**  
 NORTH CAROLINA  
MEMBER OF THE  
 NORTH CAROLINA DEPARTMENT OF TRANSPORTATION  
DIVISION OF HIGHWAYS - GIS UNIT  
IN COOPERATION WITH THE  
 U.S. DEPARTMENT OF TRANSPORTATION  
FEDERAL HIGHWAY ADMINISTRATION

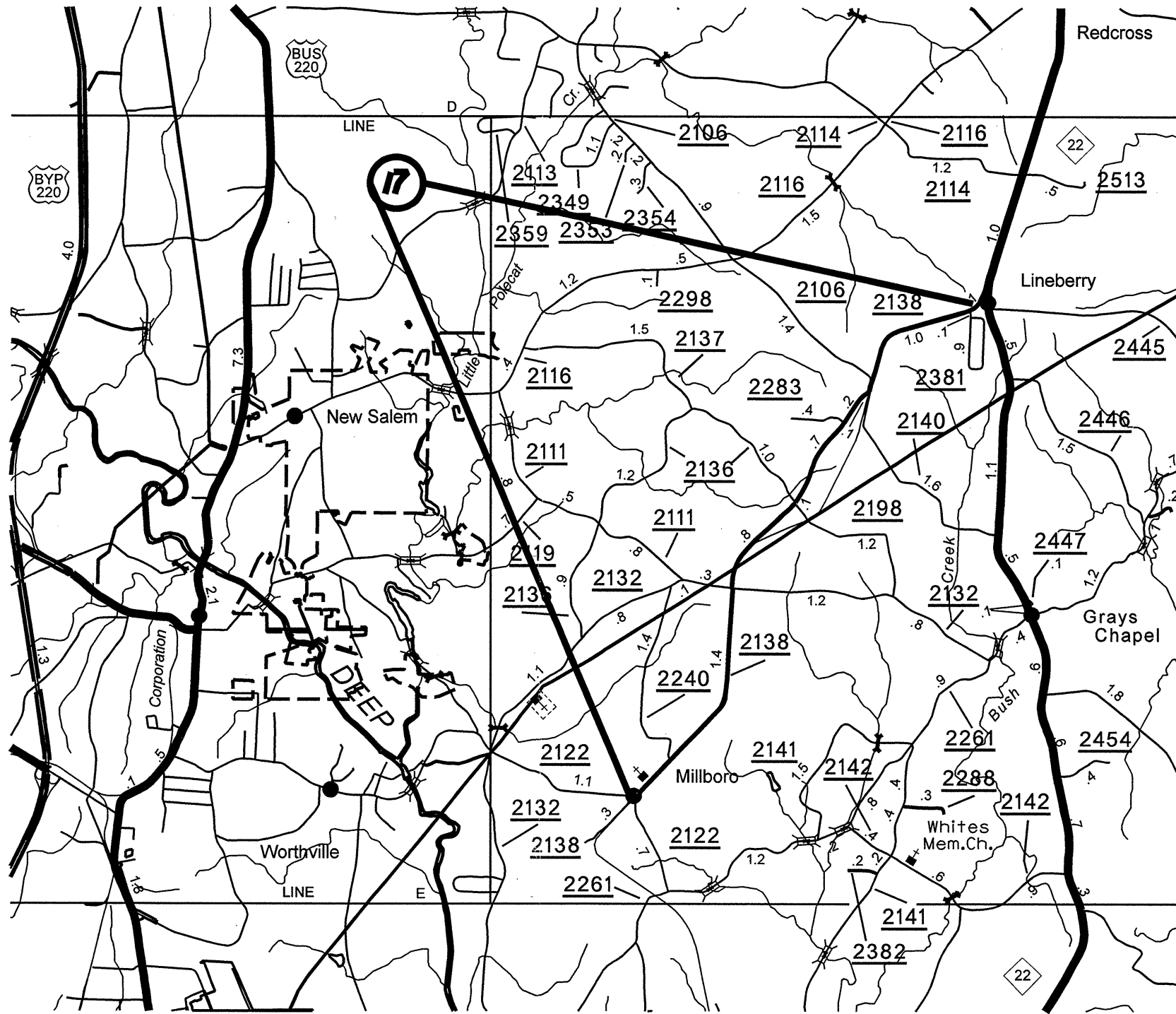


SYTIME  
DGN



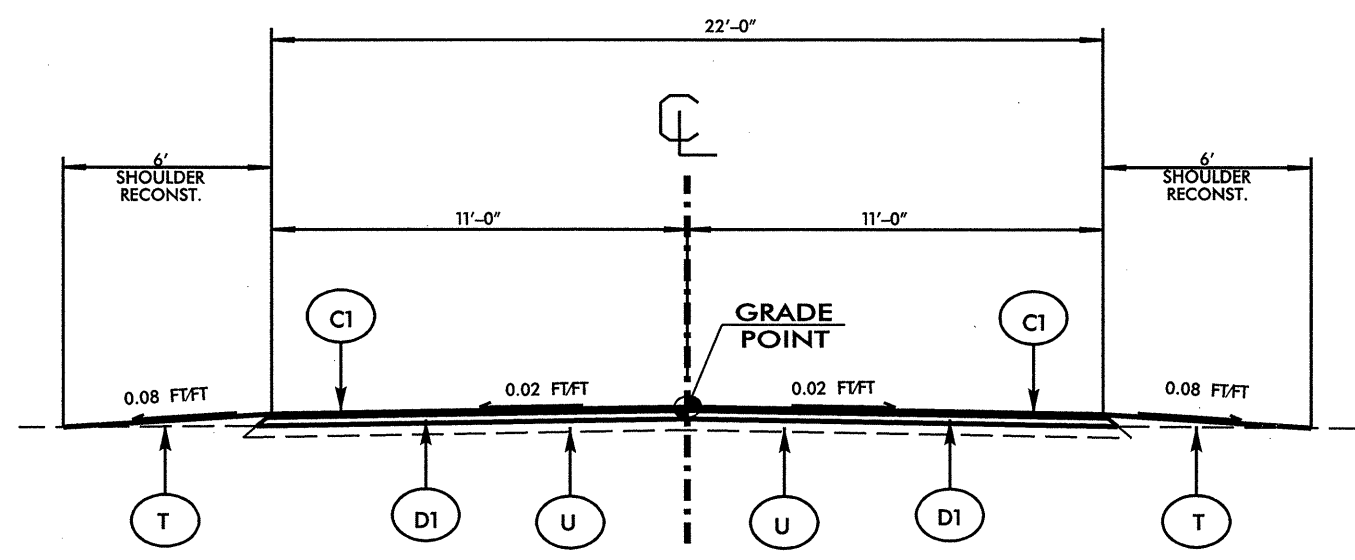
**RANDOLPH COUNTY**  
NORTH CAROLINA

REMOVED BY THE  
NORTH CAROLINA DEPARTMENT OF TRANSPORTATION  
DIVISION OF HIGHWAYS - GIS UNIT  
IN COOPERATION WITH THE  
U.S. DEPARTMENT OF TRANSPORTATION  
FEDERAL HIGHWAY ADMINISTRATION

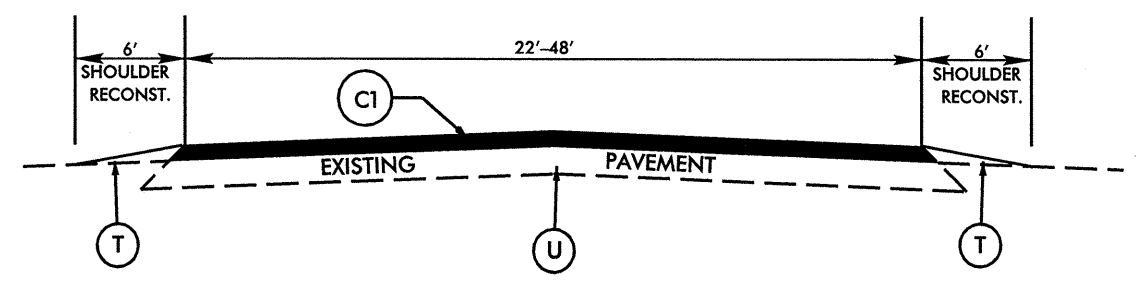


SYSTEMS TIME: 12/28/2006 08:38:23 AM  
USER: JAMES

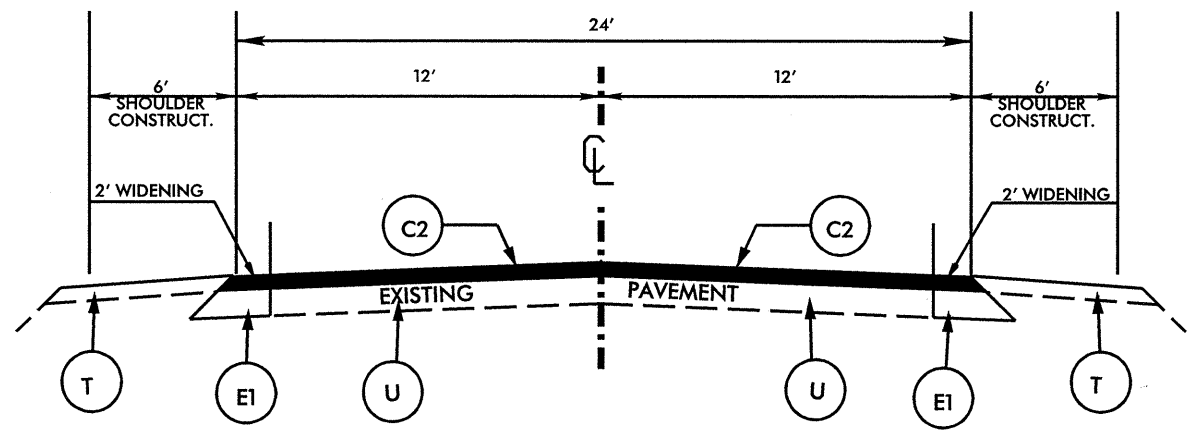




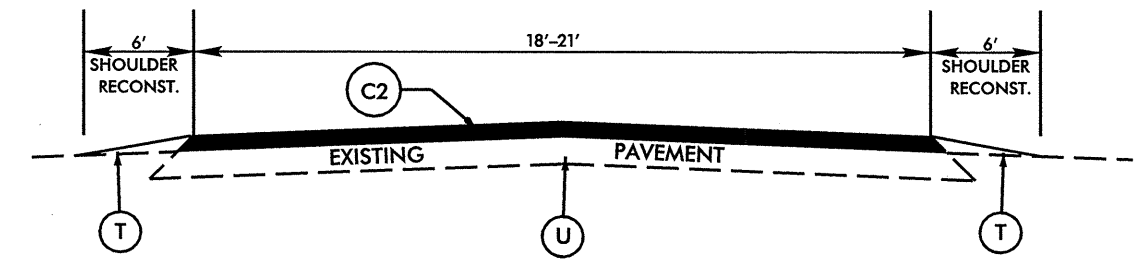
**TYPICAL SECTION NO. 1**



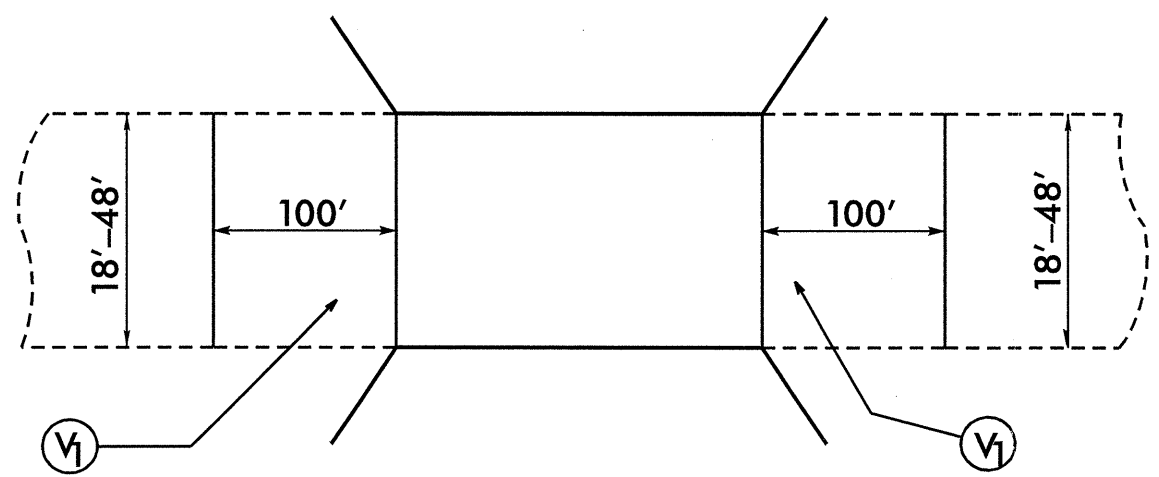
**TYPICAL SECTION NO. 2**



**TYPICAL SECTION NO. 4**



**TYPICAL SECTION NO. 3**



**MILLING TYPICAL**

PAVEMENT SCHEDULE	
C1	PROP. APPROX. 1.5" ASPH. CONC. SURFACE COURSE, TYPE S9.5C, AT AN AVERAGE RATE OF 168 LBS. PER SQ. YD.
C2	PROP. APPROX. 1.5" ASPH. CONC. SURFACE COURSE, TYPE S9.5B, AT AN AVERAGE RATE OF 168 LBS. PER SQ. YD.
D1	PROP. APPROX. 3.5" ASPH. CONC. INTERMEDIATE COURSE, TYPE I19.0B, AT AN AVERAGE RATE OF 399 LBS. PER SQ. YD.
E1	PROP. APPROX. 5.0" ASPH. CONC. BASE COURSE, TYPE B 25.0B, AT AN AVERAGE RATE OF 570 LBS. PER SQ. YD.
V1	MILLING ASPHALT PAVEMENT ON BRIDGE TO AN ELEV. 1.5" BELOW CONCRETE BRIDGEDECK, TAPERING IN 100' TO PAVEMENT SURFACE (TO BE PAID BY INCIDENTAL MILLING)
V2	MILLED RUMBLE STRIPS (USE IN CONJUNCTION WITH TYPICAL SECTION NO. 2 AND MAP NOS. 4, 5, 6, 7 & 8)
T	EARTH MATERIAL
U	EXISTING PAVEMENT

PROJECT NO.	SHEET NO.	TOTAL NO.
8CR.10761.6, 8CR.20761.6	10	

## SUMMARY OF QUANTITIES

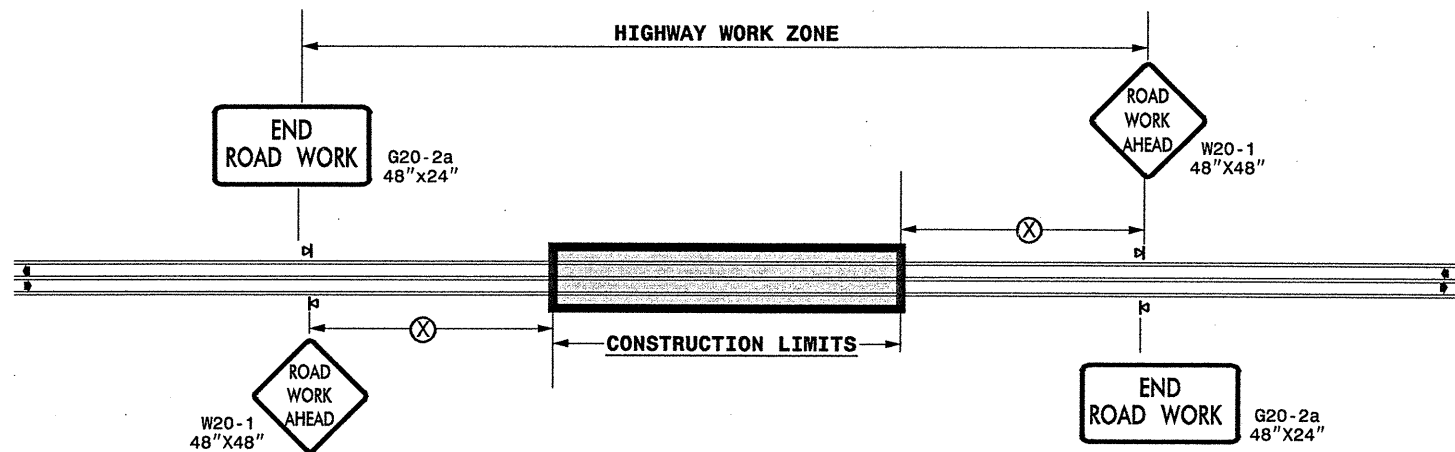
PROJECT NO	COUNTY	MAP NO	ROUTE	DESCRIPTION	TYP NO	LENGTH MI	WIDTH FT	INCIDENTAL STONE BASE TONS	SHOULDER CONSTRUCTION SMI	SHOULDER RECONSTRUCTION SMI	MILLED RUMBLE STRIPS LF	INCIDENTAL MILLING SY	BASE COURSE, B25.0B TONS	INTERMEDIATE COURSE, I19.0B TONS	SURFACE COURSE, S9.5B TONS	SURFACE COURSE, S9.5C TONS	PG 64-22 PLANT MIX TONS	PG 70-22 PLANT MIX TONS	PATCHING EXISTING PAVEMENT TONS	ADJUST METER OR VALVE BOX EA	SEED & MULCHING AC	
8CR.10761.6	Randolph	1	NC 134	FROM MONTGOMERY CO LINE TO SR 1136	1	6.6	22	90		13.2		750		18,080		7,560	850	454			9.60	
		2	NC 134	FROM SR 1136 TO SR 1138	2	1.33	22	15		2.66			244				1,525		92			1.93
		3	NC 49	FROM ASHEBORO CITY LIMIT TO US 64	2	0.91	48			1.82			950				2,335		140	75	4	1.32
		4	US 29/70 SBL	FROM GUILFORD COUNTY LINE TO DAVIDSON COUNTY LINE	2	1.61	38			3.22		17002	2280				3,180		191			2.34
		5	US 29/70 NBL	FROM DAVIDSON COUNTY LINE TO GUILFORD COUNTY LINE	2	1.61	38			3.22		17002	2280				3,180		191			2.34
		6	US 220 BYPASS NBL	FROM US 220 BUSINESS TO SR 1150	2	3.95	32			7.9		83424	356				6,253		375			7.90
		7	US 220 BYPASS SBL	FROM CJ 3.37 MI SOUTH OF GUILFORD CO LINE TO SR 2629	2	9.13	38			18.26		96413	2535				18,015		1,081			13.28
		8	US 421 SBL	FROM SR 2261 TO SR 2434	2	1.31	32			2.62		13834	711				2,302		138			2.62
<b>TOTAL FOR PROJ NO. 8CR.10761.6</b>						<b>26.45</b>		<b>105</b>		<b>52.9</b>	<b>227675</b>	<b>10106</b>		<b>18,080</b>		<b>44,350</b>	<b>850</b>	<b>2,662</b>	<b>75</b>	<b>4</b>	<b>41.33</b>	
8CR.20761.6	Randolph	9	SR 1522	FROM US 311 TO DEAD END	3	0.88	20	25		1.76		100				898		54		15	1.32	
		10	SR 2621	FROM SR 2626 TO SR 2628	3	1.34	21	25		2.68			100				1,395		84		25	2.01
		11	SR 2442	FROM SR 2261 TO SR 2459	3	1.7	21	25		3.4			467				1,770		106		15	2.55
		12	SR 1401	FROM BRIDGE #57 TO US 64	3	2.59	21	40		5.18			467				2,835		170		10	3.76
		13	SR 2625	FROM SR 2621 TO SR 2642	3	1.17	20	20		2.34			100				1,160		70		25	1.76
		14	SR 1943	FROM SR 1941 TO SR 1936	3	0.7	20	15		1.4			100				694		42		25	1.05
		15	SR 1405	FROM SR 1390 TO SR 1406	3	1.63	20	25		3.26			444				1,617		97		25	2.44
		16	SR 1114	FROM SR 1112 TO BRIDGE #4	3	5.46	18	55		10.92			100				5,125		308		45	8.19
		17	SR 2138	FROM NC 22 TO SR 2122	4	4.28	24	100		8.56			300	4070			4,015		416		85	6.23
		<b>TOTAL FOR PROJ NO. 8CR.20761.6</b>						<b>19.75</b>		<b>330</b>	<b>8.56</b>	<b>30.94</b>	<b>0</b>	<b>2178</b>	<b>4070</b>		<b>19,509</b>		<b>1,347</b>		<b>270</b>	
<b>GRAND TOTAL</b>						<b>46.2</b>		<b>435</b>	<b>8.56</b>	<b>83.84</b>	<b>227675</b>	<b>12284</b>	<b>4070</b>	<b>18,080</b>		<b>19,509</b>	<b>44,350</b>	<b>2,197</b>	<b>2,662</b>	<b>345</b>	<b>4</b>	<b>70.64</b>

PROJECT NO.	SHEET NO.	TOTAL NO.
8CR.10761.6, 8CR.20761.6	11	

## THERMOPLASTIC AND PAINT QUANTITIES

PROJECT NO	COUNTY	MAP NO	ROUTE	DESCRIPTION	4685000000-E		4686000000-E		4695000000-E	4710000000-E	4721000000-E		4725000000-E			4810000000-E		4900000000-N		4905000000-N		
					4" X 90 M WHITE THERMO LF	4" X 90 M YELLOW THERMO LF	4" X 120 M YELLOW THERMO LF	4" X 120 M WHITE THERMO LF	8" X 90 M WHITE THERMO LF	24" X 120 M WHITE THERMO LF	THERMO MSG ONLY 120 M EA	THERMO MSG SCHOOL 120 M EA	THERMO STR ARROW 90 M EA	THERMO LT ARROW 90 M EA	THERMO RT ARROW 90 M EA	4" WHITE PAINT (LARGE BEADS) LF	4" YELLOW PAINT (LARGE BEADS) LF	YELLOW & RED MARKERS EA	CRYSTAL & RED MARKERS EA	SNOW PLOWABLE MARKERS CRYSTAL & RED MARKERS EA		
8CR.10761.6	Randolph	1	NC 134	FROM MONTGOMERY CO LINE TO SR 1136	71,016		43,560									69,700	55,800	580				
		2	NC 134	FROM SR 1136 TO SR 1138	14,311		8,778												88			
		3	NC 49	FROM ASHEBORO CITY LIMIT TO US 64	9,792		6,006	500		200	4		8	9	4				160	100		
		4	US 29/70 SBL	FROM GUILFORD COUNTY LINE TO DAVIDSON COUNTY LINE	8,823	8,501		2,125														105
		5	US 29/70 NBL	FROM DAVIDSON COUNTY LINE TO GUILFORD COUNTY LINE	8,823	8,501		2,125														105
		6	US 220 BYPASS NBL	FROM US 220 BUSINESS TO SR 1150	21,646	20,856		5,214	800													261
		7	US 220 BYPASS SBL	FROM CJ 3.37 MI SOUTH OF GUILFORD CO LINE TO SR 2629	50,032	48,206		12,052	1,000													605
		8	US 421 SBL	FROM SR 2261 TO SR 2434	7,179	6,917		1,729	500					3	1							86
<b>TOTAL FOR PROJ NO. 8CR.10761.6</b>					<b>191,622</b>	<b>92,981</b>	<b>58,344</b>	<b>23,745</b>	<b>2,300</b>	<b>200</b>	<b>4</b>	<b>4</b>	<b>8</b>	<b>12</b>	<b>5</b>	<b>69,700</b>	<b>55,800</b>	<b>828</b>	<b>100</b>	<b>1,162</b>		
					<b>284,603</b>		<b>82,089</b>					<b>25</b>			<b>125,500</b>		<b>928</b>					
8CR.20761.6	Randolph	9	SR 1522	FROM US 311 TO DEAD END												9,469	5,808	58				
		10	SR 2621	FROM SR 2626 TO SR 2628													14,418	8,844	88			
		11	SR 2442	FROM SR 2261 TO SR 2459						50		6					18,292	11,220	112			
		12	SR 1401	FROM BRIDGE #57 TO US 64													27,868	17,094	171			
		13	SR 2625	FROM SR 2621 TO SR 2642													9,500	6,236	77			
		14	SR 1943	FROM SR 1941 TO SR 1936													7,532	4,620	46			
		15	SR 1405	FROM SR 1390 TO SR 1406													17,539	10,758	108			
		16	SR 1114	FROM SR 1112 TO BRIDGE #4													115,320	92,260	360			
17	SR 2138	FROM NC 22 TO SR 2122							50		6				90,400	72,300	282					
<b>TOTAL FOR PROJ NO. 8CR.20761.6</b>										<b>50</b>	<b>6</b>				<b>310,339</b>	<b>229,140</b>	<b>1,304</b>					
											<b>6</b>				<b>539,479</b>		<b>1,304</b>					
<b>GRAND TOTAL</b>					<b>191,622</b>	<b>92,981</b>	<b>58,344</b>	<b>23,745</b>	<b>2,300</b>	<b>250</b>	<b>4</b>	<b>6</b>	<b>8</b>	<b>12</b>	<b>5</b>	<b>380,039</b>	<b>284,940</b>	<b>2,132</b>	<b>100</b>	<b>1,162</b>		
					<b>284,603</b>		<b>82,089</b>				<b>10</b>		<b>25</b>		<b>664,979</b>		<b>2,232</b>					

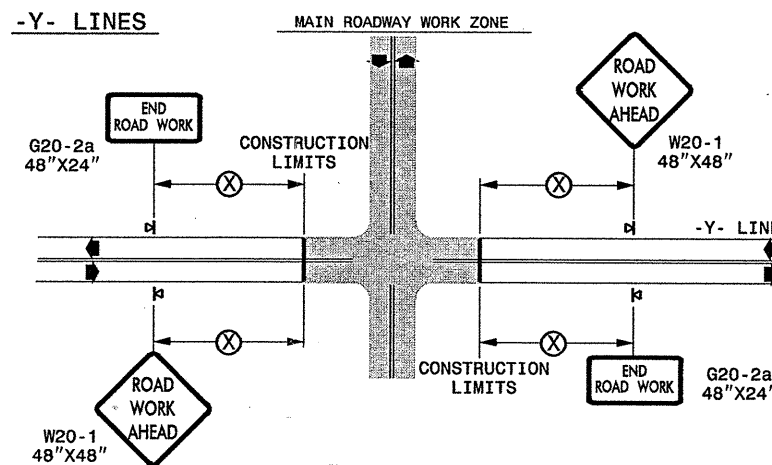
**TWO-WAY UNDIVIDED \*\* (L-LINES)**



POSTED SPEED LIMIT (M.P.H.)	RECOMMENDED MINIMUM SIGN SPACING
≤ 50	500'
≥ 55	1000'

STATE OF NORTH CAROLINA  
DEPT. OF TRANSPORTATION  
DIVISION OF HIGHWAYS  
RALEIGH, N.C.

**ROADWAYS INTERSECTING ALONG 2 WAY UNDIVIDED WORK ZONE (Y-LINES)**



**GENERAL NOTES**

- USE FLUORESCENT ORANGE SHEETING (TYPE VII OR HIGHER) ON ALL ADVANCED WORK ZONE SIGNS.
- DO NOT INSTALL ADVANCE WARNING SIGNS MORE THAN 3 DAYS PRIOR TO BEGINNING OF WORK.
- ALL SIGN SPACING DIMENSIONS ARE APPROXIMATE, FIELD ADJUST AS NECESSARY OR AS DIRECTED.
- USE PORTABLE WORK ZONE SIGNS ONLY WITH PORTABLE WORK ZONE SIGN STANDS SPECIFICALLY DESIGNED FOR ONE ANOTHER. PORTABLE WORK ZONE SIGNS MAY BE ROLL UP OR APPROVED COMPOSITE.
- PROVIDE PORTABLE WORK ZONE SIGN STANDS, PORTABLE SIGNS AND SIGN SHEETING WHICH ARE LISTED ON THE NORTH CAROLINA DEPARTMENT OF TRANSPORTATION'S APPROVED PRODUCT LIST OR ACCEPTED AS TRAFFIC QUALIFIED BY THE TRAFFIC CONTROL UNIT.
- \*\* TWO-WAY UNDIVIDED ADVANCE WARNING SIGN CONFIGURATION MAY BE USED ON URBAN MULTI-LANE FACILITIES WHERE CONDITIONS LIMIT THE USE OF DUAL MOUNTED SIGNS AS DETERMINED BY THE ENGINEER.

**LEGEND**

◀ PORTABLE SIGN

➡ DIRECTION OF TRAFFIC FLOW

DETAIL DRAWING  
FOR TWO-WAY UNDIVIDED  
WORK ZONE WARNING SIGNS

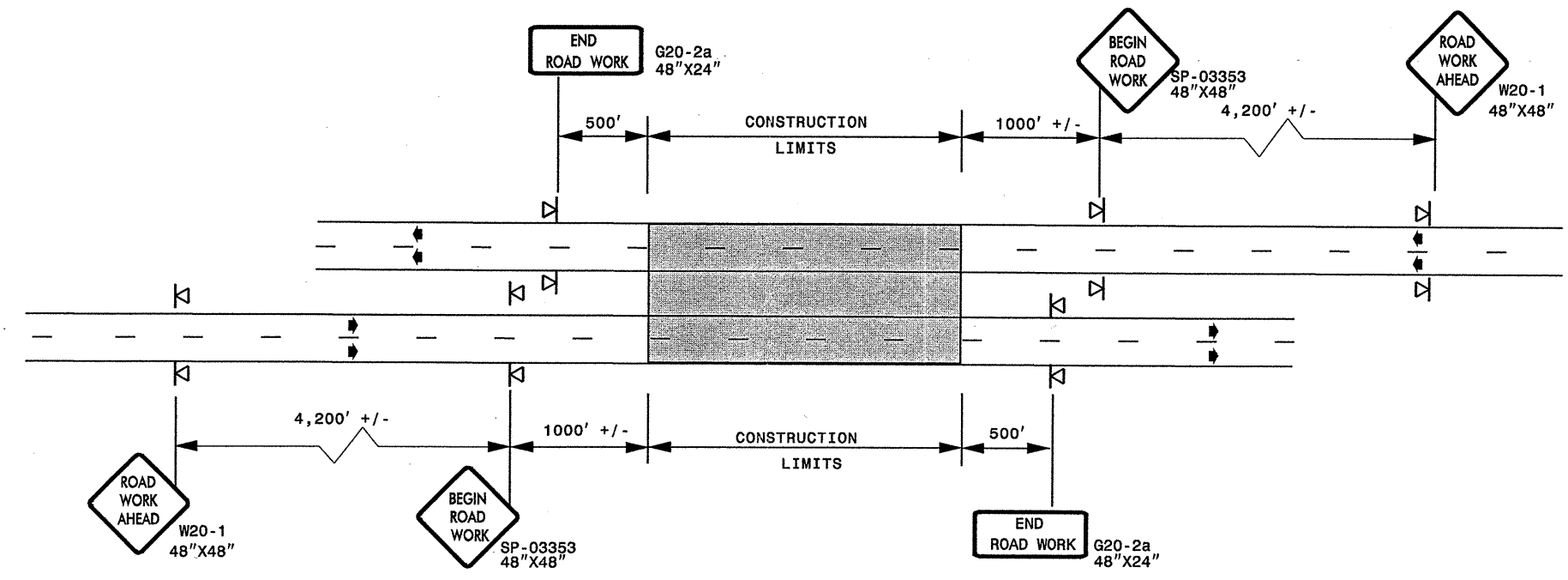
SHEET 1 OF 1

APPROVED: _____ DATE: _____	DETAIL DRAWING FOR TWO-WAY UNDIVIDED ADVANCED WORK ZONE WARNING SIGNS	
SEAL		
SCALE: NONE		REVISIONS
DATE: _____		7-98 10/01
DWG. BY: _____		10-98 03/04
DESIGN BY: _____		01/01 11/04
REVIEWED BY: _____		CADD FILE

27-DEC-2006 17:17  
 \\G01\DESIGN\GROUPS-WZTCC\design\resurfacing\resurfacing\div08\8cr10761.6\2wayundivurbfr-wys\july2006.dgn  
 pseymore AT WZTCC206427

**ADVANCED WORK ZONE WARNING SIGNING FOR FREEWAYS (4 LANES OR GREATER)**

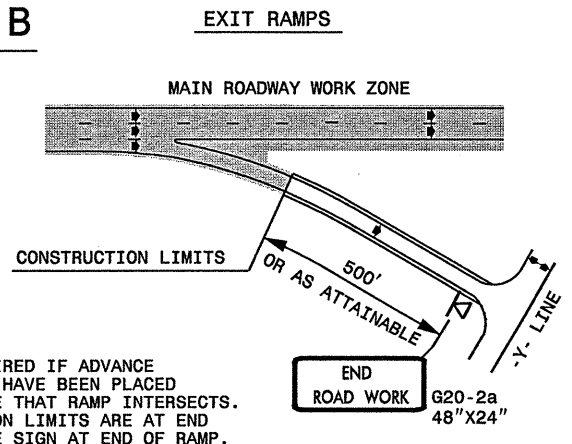
**DETAIL A**



STATE OF NORTH CAROLINA  
DEPT. OF TRANSPORTATION  
DIVISION OF HIGHWAYS  
RALEIGH, N.C.

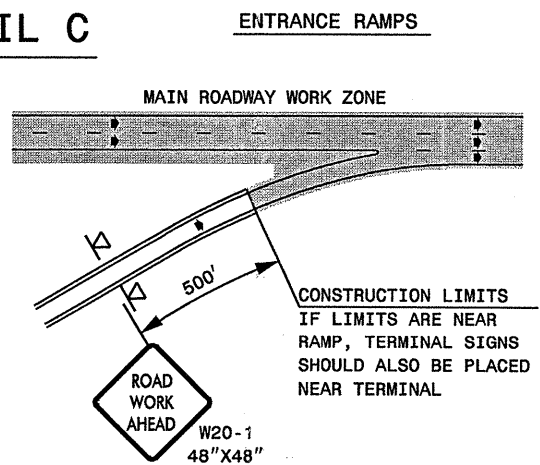
**ROADWAYS INTERSECTING ALONG FREEWAY WORK ZONE (Y-LINES)**

**DETAIL B**



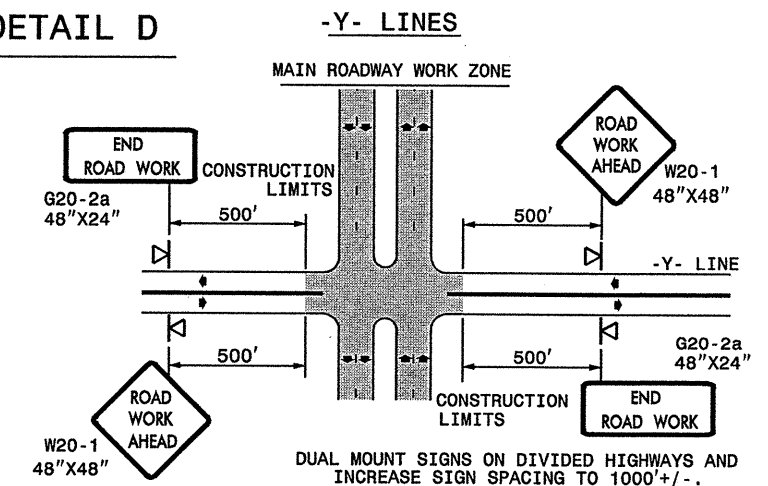
NOTE:  
SIGN NOT REQUIRED IF ADVANCE WARNING SIGNS HAVE BEEN PLACED ALONG -Y- LINE THAT RAMP INTERSECTS. IF CONSTRUCTION LIMITS ARE AT END OF RAMP, PLACE SIGN AT END OF RAMP.

**DETAIL C**



CONSTRUCTION LIMITS IF LIMITS ARE NEAR RAMP, TERMINAL SIGNS SHOULD ALSO BE PLACED NEAR TERMINAL

**DETAIL D**



**DETAIL DRAWING  
FOR FREEWAYS  
WORK ZONE WARNING SIGNS  
(SHORT-DURATION LANE CLOSURES)**

**GENERAL NOTES**


- USE FLUORESCENT ORANGE SHEETING (TYPE VII OR HIGHER) ON ALL ADVANCED WORK ZONE SIGNS.
- DO NOT INSTALL ADVANCE WARNING SIGNS MORE THAN 3 DAYS PRIOR TO BEGINNING OF WORK.
- ALL SIGN SPACING DIMENSIONS ARE APPROXIMATE, FIELD ADJUST AS NECESSARY OR AS DIRECTED.
- USE PORTABLE WORK ZONE SIGNS ONLY WITH PORTABLE WORK ZONE SIGN STANDS SPECIFICALLY DESIGNED FOR ONE ANOTHER. PORTABLE WORK ZONE SIGNS MAY BE ROLL UP OR APPROVED COMPOSITE.
- PROVIDE PORTABLE WORK ZONE SIGN STANDS, PORTABLE SIGNS AND SIGN SHEETING WHICH ARE LISTED ON THE NORTH CAROLINA DEPARTMENT OF TRANSPORTATION'S APPROVED PRODUCT LIST OR ACCEPTED AS TRAFFIC QUALIFIED BY THE TRAFFIC CONTROL UNIT.
- \*\* TWO-WAY UNDIVIDED ADVANCE WARNING SIGN CONFIGURATION MAY BE USED ON MULTI-LANE FACILITIES WHERE CONDITIONS LIMIT THE USE OF DUAL MOUNTED SIGNS AS DETERMINED BY THE ENGINEER.

**LEGEND**

◀ PORTABLE SIGN

➡ DIRECTION OF TRAFFIC FLOW

SHEET 1 OF 1

APPROVED: _____	DATE: _____	<b>DETAIL DRAWING FOR FREEWAYS WORK ZONE WARNING SIGNS</b>	
SEAL	SCALE: NONE		
	DATE: _____		
	DWG. BY: _____		
	DESIGN BY: _____		
REVIEWED BY: _____	REVISIONS	7-98	10/01
		10-98	03/04
		01/01	11/04

27-DEC-2006 17:48 \\DOT\DFSR00101\GROUPS-WZTCCC\designgroup4\resurfacing\resurfacing2006\div08\8cr107616etcrandolph\8CR107616\Free4lanesgr eatJuly2006.dgn pseymore AT WZT206427

### SP 03353

SIGN NUMBER: SP-03353 TYPE: A QUANTITY: 1	BACKG COLOR: Fluorescent Orange COPY COLOR: Black	DESIGN BY: CL DOWNEY PROJECT ID: ALL PROJECTS	CHECKED BY: CHECKED DIV: DIV	STD #: W20-1 DATE: Aug 20, 2003
---	--	--	---------------------------------	------------------------------------

SYMBOL	X	Y	WID	HT

SIGN WIDTH: 4'-0"  
HEIGHT: 4'-0"  
TOTAL AREA: 16.0 Sq.Ft.

BORDER TYPE: FLUSH  
RECESS: 0.59"  
WIDTH: 0.75"  
RADIUS: 1.38"

NO. Z BARS: N/A  
LENGTH: N/A

MAT'L:

USE NOTES: 2, 4

- Legend and border shall be direct applied Type VII reflective sheeting.
- Legend and border shall be direct applied non-reflective sheeting.
- Shields shall be Type VII reflective sheeting on 0.032" (0.8mm) aluminum and demountable.
- Background shall be Type VII reflective sheeting.
- Background shall be Type I reflective sheeting.
- Center arrow(s) vertically on sign.
- Bottom panel shall be yellow Type III sheeting. Legend shall be direct applied black non-reflective sheeting. Yellow panel is:

BORDER  
R=1.38"  
TH=0.75"  
IN=0.59"

LETTER POSITIONS

Letter spacings are to start of next letter

Letter	B	E	G	I	N	W	O	R	K	Series/Size	Text Length
B	22.4	5.3	4.6	5.4	2.5	3.8	22.4			C7	21.6
E										C7	19.6
G										C7	21.2
I											
N											
W											
O											
R											
K											

Spacing Factor is 1 unless specified otherwise

FILENAME: SPECISHAK

#### GENERAL NOTES FOR SIGN SP-03353 "BEGIN ROAD WORK"

- SIGN SP-03353 "BEGIN ROAD WORK" ONLY APPLIES TO FULL CONTROL AND PARTIAL CONTROL OF ACCESS ROADWAYS
- WHEN USED, INSTALL SIGN SP-03353 "BEGIN ROAD WORK" ACCORDING TO DETAIL FOR FREEWAY WORK ZONE SIGNS

STATE OF NORTH CAROLINA  
DEPT. OF TRANSPORTATION  
DIVISION OF HIGHWAYS  
RALEIGH, N.C.

DETAIL DRAWING FOR  
WORK ZONE SIGNS  
BEGIN ROAD WORK

APPROVED: _____	DATE: _____	DETAIL DRAWING FOR ADVANCED WORK ZONE WARNING SIGN DESIGNS	
SEAL 	SCALE: NONE		REVISIONS
	DATE: 0803		0404
	DWG. BY:		1104
	DESIGN BY:		
REVIEWED BY:			CADD FILE

27-DEC-2006 17:18  
K:\DOT\DESIGN\GROUPS-WZTCCC\design\oup4\resurfacing\resurfacing2006\div08\8cr107616set cr andolph\8CR107616SignDesigns\July2006.dgn  
psey/more AT WZTCCC