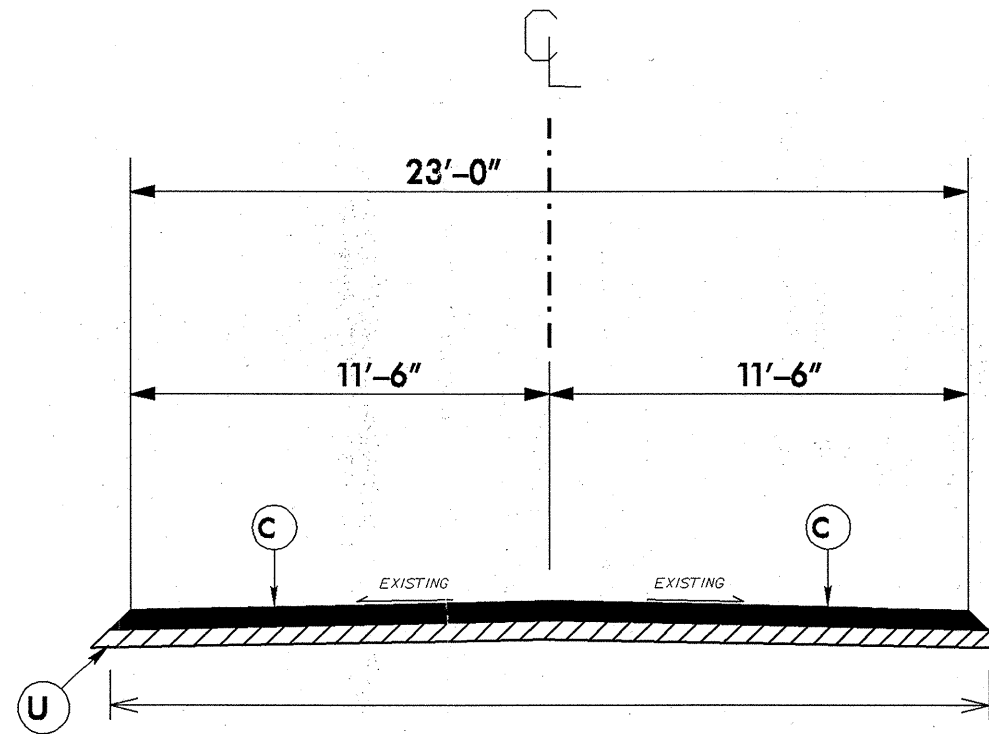


6/22/99

PROJECT REFERENCE NO.	SHEET NO.
ICR10481.3	

C	PROP. APPROX. 1½" ASPHALT CONCRETE SURFACE COURSE, TYPE S9.5B, AT AN AVERAGE RATE OF 168 LBS. PER SQ. YD.
U	EXISTING PAVEMENT.

NOTE: PAVEMENT EDGE SLOPES ARE 1:1 UNLESS SHOWN OTHERWISE.



TYPICAL SECTION NO. 1

USE WITH MAP 1

14-DEC-2006 10:28
c:\documents\10188511\10188511.dwg
10188511.dwg

US 264

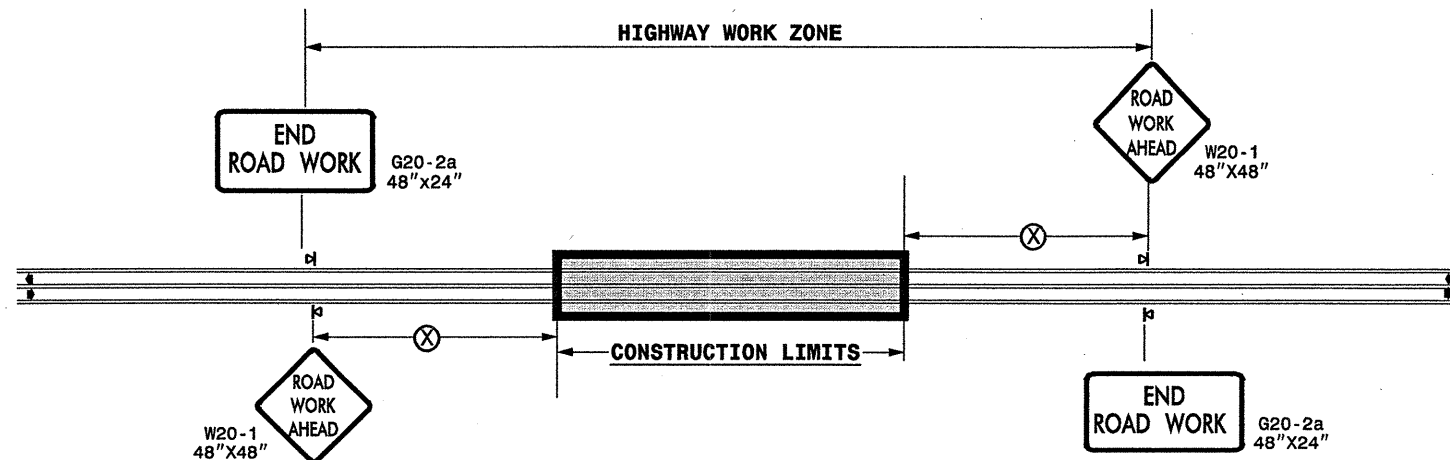
SUMMARY OF QUANTITIES

PROPOSAL NUMBER: 13 456-07

DESCRIPTION: RESURFACE US 264 FROM SCRANTON CREEK BRIDGE TO NC 94 IN HYDE COUNTY.

MAP ON.	WBS NO.	COUNTY	ROAD NO.	MAP DESCRIPTION	TYPICAL SECTION	MAP LENGTH MILES	EXIST MAP WIDTH FEET	NEW MAP WIDTH FEET	RESURFACE S 9.5 B DEPTH INCHES	RESURFACE S 9.5 B PULL LBS/SYD	010	020	030	040	050	060	070	AVAILABILITY DATE	COMPLETION DATE	MAP NO.
											RESURFACE S 9.5 B TONS	PG 64-22 TONS	CENTERLINE TEMP. PAINT MARKING 4" LFT	EDGE THERMO PAVT LINE 4", 90 MIL LFT	CENTERLINE THERMO PAVT LINE 4", 120 MIL LFT	STOP LINES THERMO PAVT LINE 24", 120 MIL LFT	PAVEMENT RAISED MARKERS EA			
1	1CR.10481.3	HYDE	US 264	(RESURFACE) FROM SCRANTON CREEK BRIDGE TO NC 94	1	10.17	23	N/A	1.5	168	12,944.00	841	80550	107400	80550	60	674	7/16,2007	9/14/2007	1
TOTAL =											12,944.00	841	80550	107400	80550	60	674			
											RESURFACE S 9.5 B TONS	PG 64-22 TONS	TEMP. PAINT MARKING 4" LFT	THERMO PAVT LINE 4", 90 MIL LFT	THERMO PAVT LINE 4", 120 MIL LFT	THERMO PAVT LINE 24", 120 MIL LFT	PAVEMENT RAISED MARKERS EA			

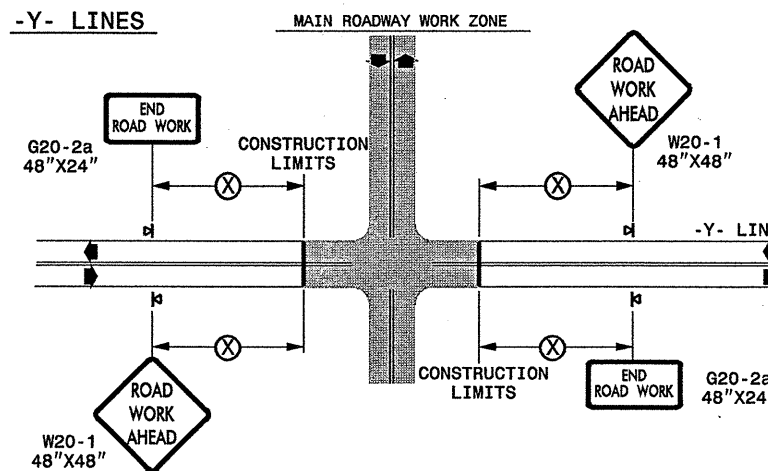
TWO-WAY UNDIVIDED ** (L-LINES)



POSTED SPEED LIMIT (M.P.H.)	RECOMMENDED MINIMUM SIGN SPACING
≤ 50	500'
≥ 55	1000'

STATE OF NORTH CAROLINA
DEPT. OF TRANSPORTATION
DIVISION OF HIGHWAYS
RALEIGH, N.C.

ROADWAYS INTERSECTING ALONG 2 WAY UNDIVIDED WORK ZONE (Y-LINES)



GENERAL NOTES

- USE FLUORESCENT ORANGE SHEETING (TYPE VII OR HIGHER) ON ALL ADVANCED WORK ZONE SIGNS.
- DO NOT INSTALL ADVANCE WARNING SIGNS MORE THAN 3 DAYS PRIOR TO BEGINNING OF WORK.
- ALL SIGN SPACING DIMENSIONS ARE APPROXIMATE, FIELD ADJUST AS NECESSARY OR AS DIRECTED.
- USE PORTABLE WORK ZONE SIGNS ONLY WITH PORTABLE WORK ZONE SIGN STANDS SPECIFICALLY DESIGNED FOR ONE ANOTHER. PORTABLE WORK ZONE SIGNS MAY BE ROLL UP OR APPROVED COMPOSITE.
- PROVIDE PORTABLE WORK ZONE SIGN STANDS, PORTABLE SIGNS AND SIGN SHEETING WHICH ARE LISTED ON THE NORTH CAROLINA DEPARTMENT OF TRANSPORTATION'S APPROVED PRODUCT LIST OR ACCEPTED AS TRAFFIC QUALIFIED BY THE TRAFFIC CONTROL UNIT.
- ** TWO-WAY UNDIVIDED ADVANCE WARNING SIGN CONFIGURATION MAY BE USED ON URBAN MULTI-LANE FACILITIES WHERE CONDITIONS LIMIT THE USE OF DUAL MOUNTED SIGNS AS DETERMINED BY THE ENGINEER.

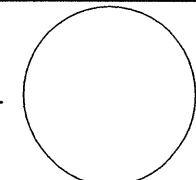

LEGEND

◀ PORTABLE SIGN

➡ DIRECTION OF TRAFFIC FLOW

DETAIL DRAWING
FOR TWO-WAY UNDIVIDED
WORK ZONE WARNING SIGNS

SHEET 1 OF 1

APPROVED: _____	DATE: _____	DETAIL DRAWING FOR TWO-WAY UNDIVIDED ADVANCED WORK ZONE WARNING SIGNS	
SEAL 			
SCALE: NONE		REVISIONS	
DATE: 7-98		10/01	
DWG. BY: _____		10-98 03/04	
DESIGN BY: _____		01/01 11/04	
REVIEWED BY: _____			

19-DEC-2006 16:40
 \\DOT\dfsroot\groups-w\TCCC\design\group4\resurfacing\resurfacing2006\div01\cr104813hyde\cr104813_2wayundivurbfr.wys\july2006.dgn
 pseymore AT WZTC206427