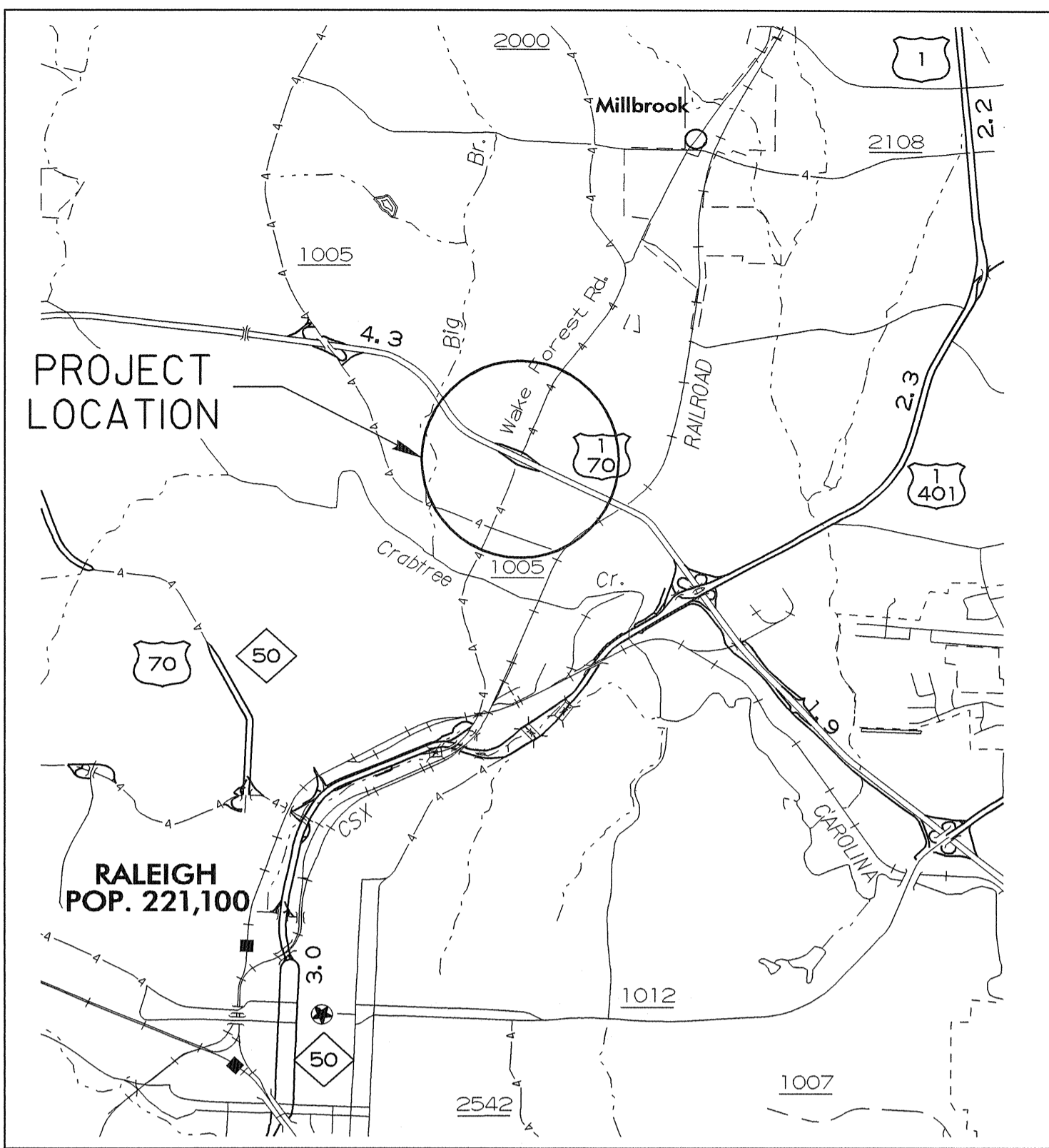


T.I.P. NO.	SHEET NO.
W-4404	UC-1

TIP: W-4404

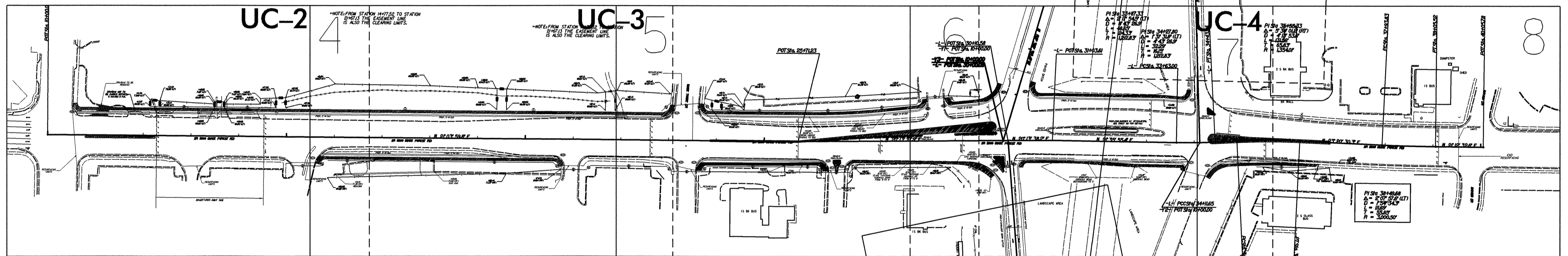
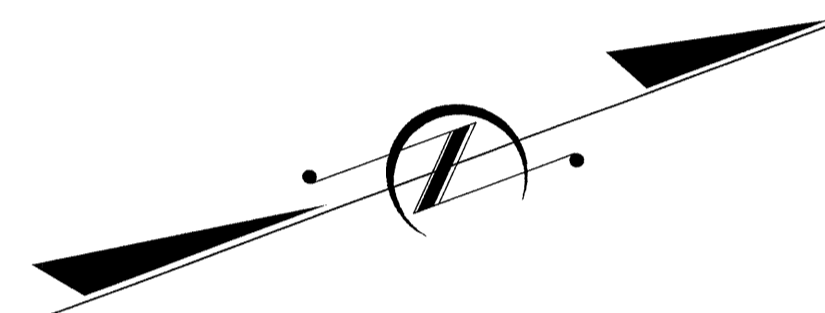


VICINITY MAP SHOWING
LOCATION OF PROJECT 35156.1.3

STATE OF NORTH CAROLINA
DIVISION OF HIGHWAYS

UTILITY CONSTRUCTION PLANS
WAKE COUNTY

LOCATION: SR 2000 (WAKE FOREST ROAD)
BETWEEN SR 1005 (SIX FORKS ROAD)
AND NAVAHO DRIVE
TYPE OF WORK: GRADE, DRAIN, BASE, PAVE.

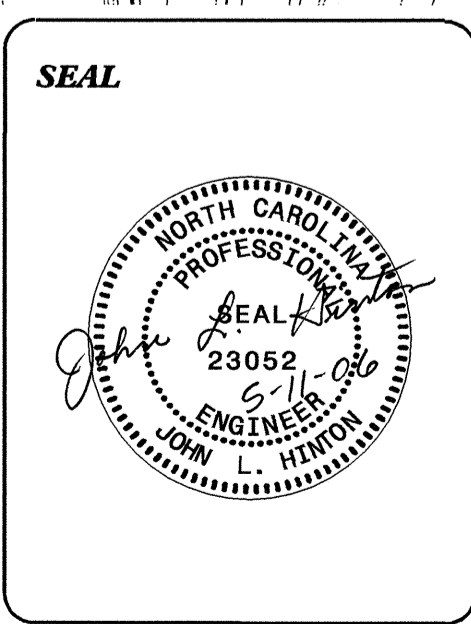


PROJECT: 35156.1.3

INDEX OF SHEETS	
SHEET NO.	DESCRIPTION
UC-1	TITLE SHEET
UC-2 TO UC-6	UTILITY CONSTRUCTION PLAN SHEETS

WATER AND SEWER OWNERS ON PROJECT

(1) CITY OF RALEIGH (WATER AND SEWER)



PREPARED IN THE OFFICE OF:
DIVISION OF HIGHWAYS
PROJECT SERVICES
UTILITY SECTION

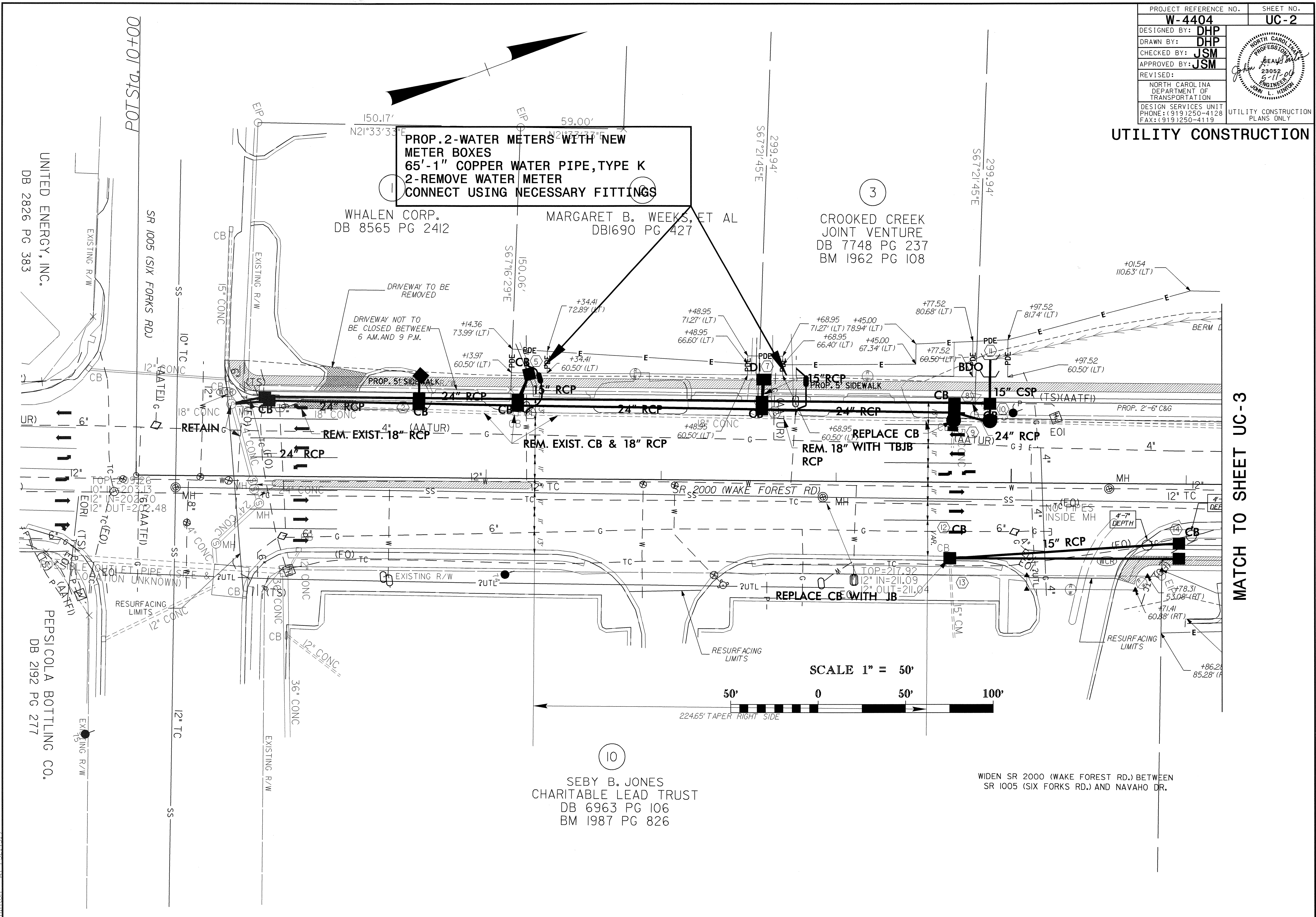
1591 MAIL SERVICES CENTER
RALEIGH, NC 27699-1591
PHONE (919) 250-4128
FAX (919) 250-4119

Roger Worthington, P.E. UTILITIES SECTION ENGINEER
Steve McKee, P.E. UTILITIES SQUAD LEADER PROJECT ENGINEER
John Hinton, P.E. UTILITIES PROJECT DESIGNER

\\-MAY-2006 16:34
st:\specdes\utilities\jsh\w4404\w4404d5tah_uc1.psh
jhinton RI PS214519

PROJECT REFERENCE NO.	SHEET NO.
W-4404	UC-2
DESIGNED BY: DHP	
DRAWN BY: DHP	
CHECKED BY: JSM	
APPROVED BY: JSM	
REVISED:	NORTH CAROLINA DEPARTMENT OF TRANSPORTATION
DESIGN SERVICES UNIT PHONE: (919) 250-4128 FAX: (919) 250-4119	UTILITY CONSTRUCTION PLANS ONLY

UTILITY CONSTRUCTION



MATCH TO SHEET UC-3

UNITED ENERGY, INC.
DB 2826 PG 383

PEPSICOLA BOTTLING CO.
DB 2192 PG 277

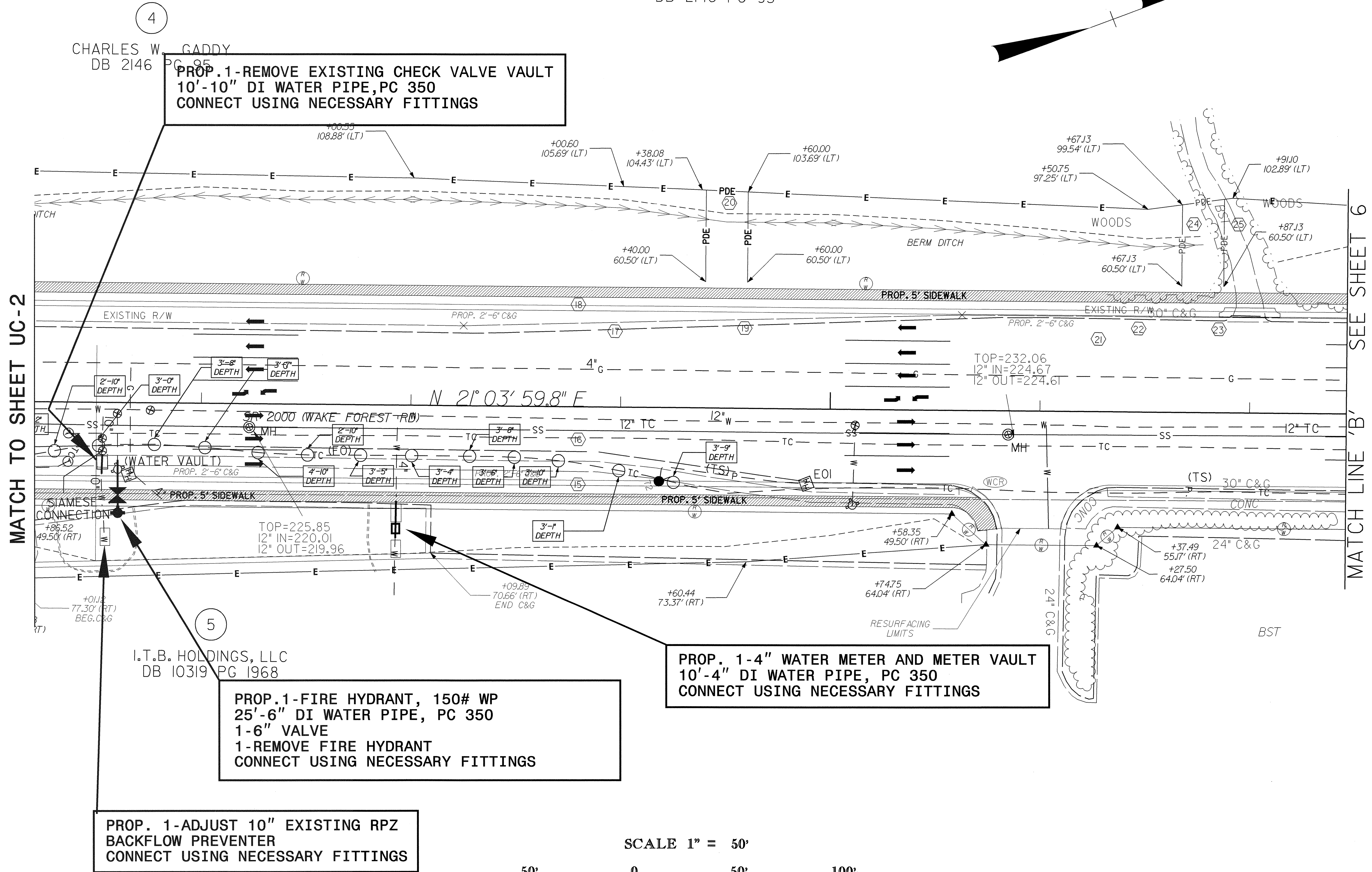
8/17/99
11-MAY-2006 15:29
st:\specdes\ut\ps214519\jhm\jhw\4404a\w4404s04_uc2.psh
AUTOCAD 2004

PROJECT REFERENCE NO.	SHEET NO.
W-4404	UC-3
DESIGNED BY: DHP	
DRAWN BY: DHP	
CHECKED BY: JSM	
APPROVED BY: JSM	
REVISED:	
NORTH CAROLINA DEPARTMENT OF TRANSPORTATION DESIGN SERVICES UNIT PHONE: (919) 250-4128 FAX: (919) 250-4119	
UTILITY CONSTRUCTION PLANS ONLY	

FROM STATION 14+77.52 TO STATION 21+67.13 THE EASEMENT LINE IS ALSO THE CLEARING LIMITS.

**NOTE: FROM STATION 14+77.52 TO STATION 21+67.13 THE EASEMENT LINE IS ALSO THE CLEARING LIMITS.

4
 CHARLES W. GADDY
 DB 2146 PG 95

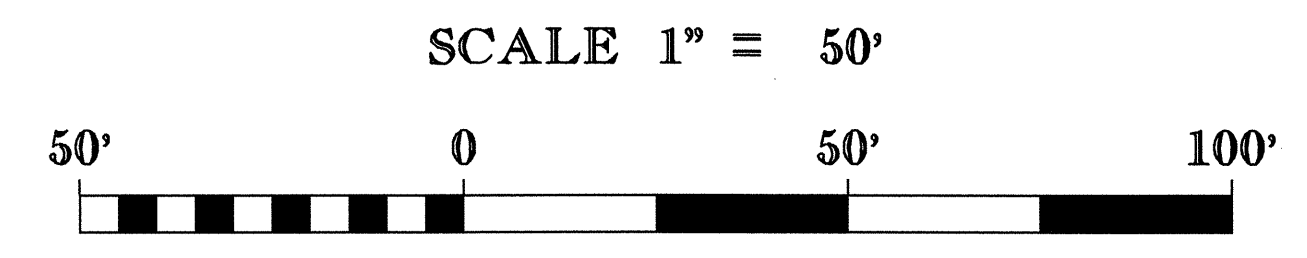


4
 CHARLES W. GADDY
 DB 2146 PG 95
**PROP. 1-REMOVE EXISTING CHECK VALVE VAULT
 10'-10" DI WATER PIPE, PC 350
 CONNECT USING NECESSARY FITTINGS**

5
 I.T.B. HOLDINGS, LLC
 DB 10319 PG 1968
**PROP. 1-FIRE HYDRANT, 150# WP
 25'-6" DI WATER PIPE, PC 350
 1-6" VALVE
 1-REMOVE FIRE HYDRANT
 CONNECT USING NECESSARY FITTINGS**

**PROP. 1-4" WATER METER AND METER VAULT
 10'-4" DI WATER PIPE, PC 350
 CONNECT USING NECESSARY FITTINGS**

**PROP. 1-ADJUST 10" EXISTING RPZ
 BACKFLOW PREVENTER
 CONNECT USING NECESSARY FITTINGS**



MATCH TO SHEET UC-2

MATCH LINE 'B' SEE SHEET 6

8/17/99
 11-MAY-2006 16:37
 s:\specdes\utility\ps214519\jhm\w4404s05\uc3-pah
 jhinton PS214519

PROJECT REFERENCE NO.	SHEET NO.
W-4404	UC-4
DESIGNED BY: DHP	
DRAWN BY: DHP	
CHECKED BY: JSM	
APPROVED BY: JSM	
REVISED:	
NORTH CAROLINA DEPARTMENT OF TRANSPORTATION DESIGN SERVICES UNIT PHONE: (919) 250-4128 FAX: (919) 250-4119	
UTILITY CONSTRUCTION PLANS ONLY	

8

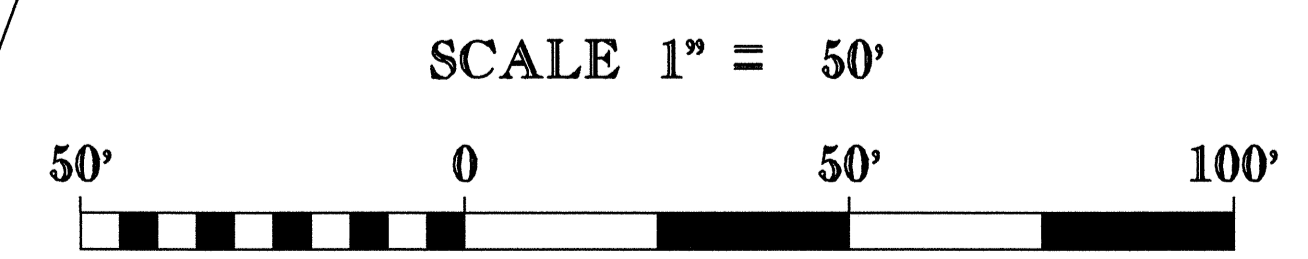
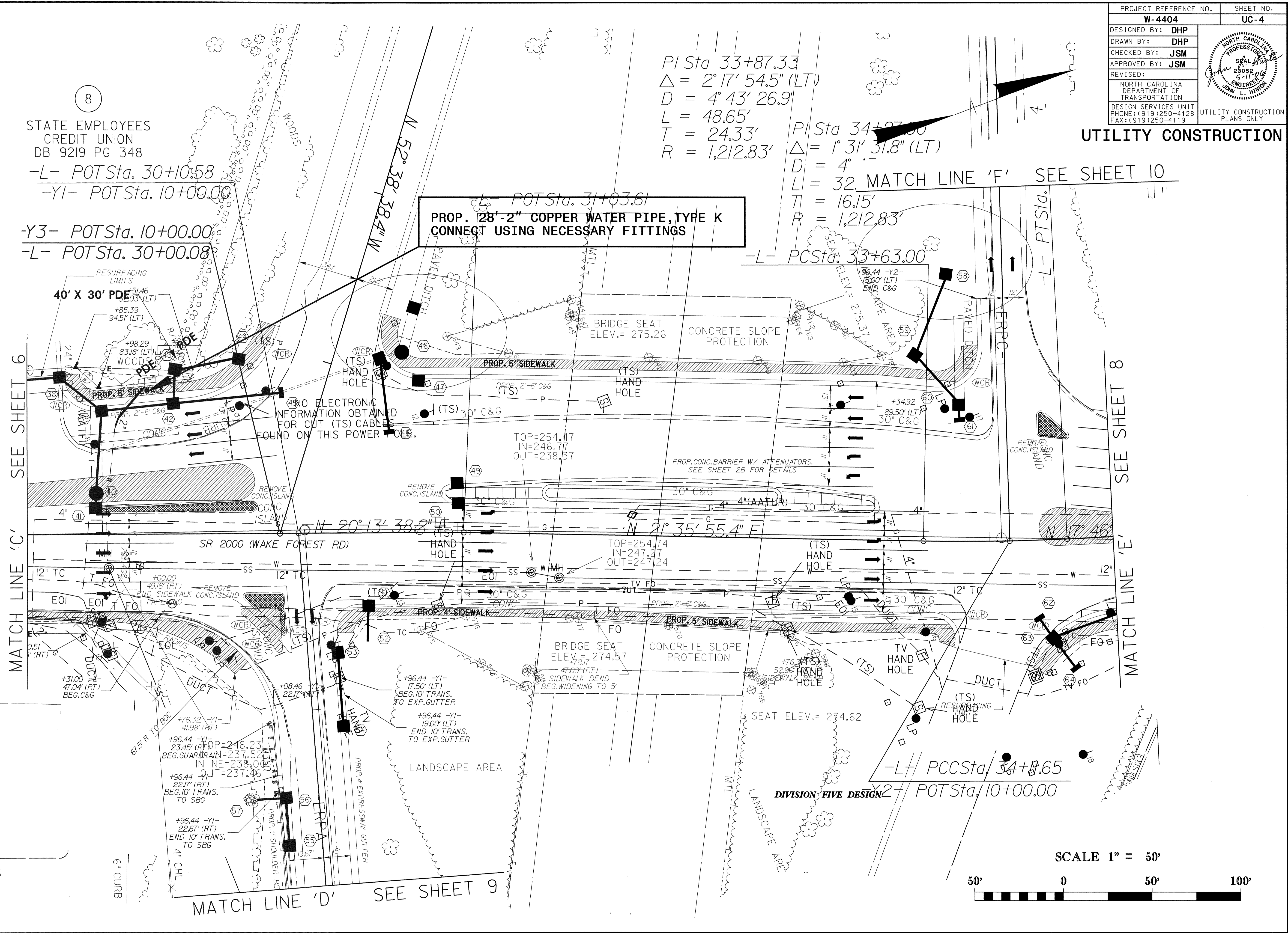
STATE EMPLOYEES
 CREDIT UNION
 DB 9219 PG 348

-L- POT Sta. 30+10.58
 -Y1- POT Sta. 10+00.00
 -Y3- POT Sta. 10+00.00
 -L- POT Sta. 30+00.08

PI Sta 33+87.33
 $\Delta = 2^{\circ} 17' 54.5''$ (LT)
 $D = 4^{\circ} 43' 26.9''$
 $L = 48.65'$
 $T = 24.33'$
 $R = 1,212.83'$

PI Sta 34+07.00
 $\Delta = 1^{\circ} 31' 31.8''$ (LT)
 $D = 4^{\circ}$
 $L = 32$ MATCH LINE 'F' SEE SHEET 10
 $T = 16.15'$
 $R = 1,212.83'$

PROP. 28'-2" COPPER WATER PIPE, TYPE K
 CONNECT USING NECESSARY FITTINGS



MATCH LINE 'C' SEE SHEET 6

MATCH LINE 'E' SEE SHEET 8

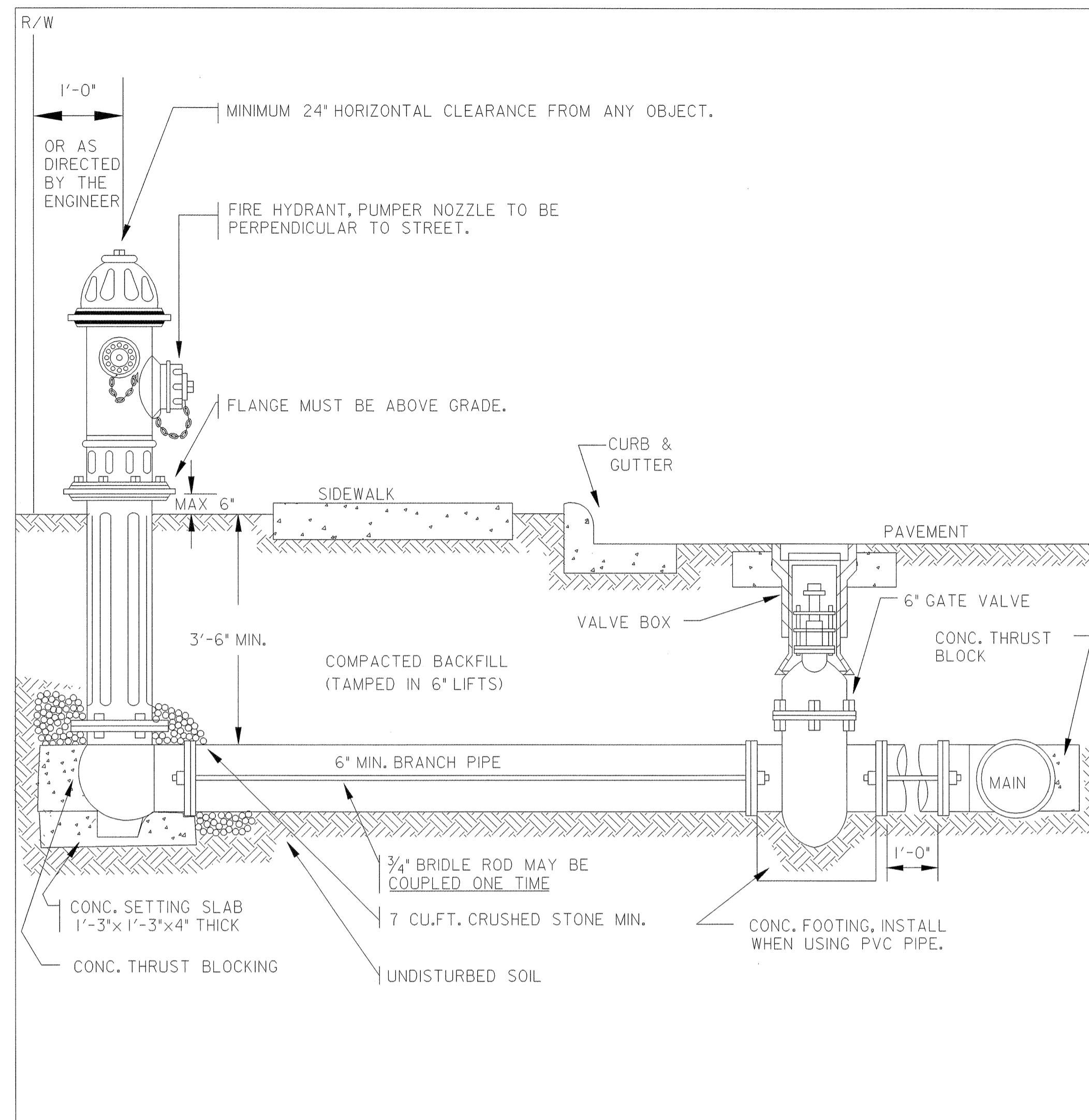
MATCH LINE 'D' SEE SHEET 9

8/17/99
 11-MAY-2006 15:37
 s:\specdes\jth\w4404a\w4404s07_UC4.PSH
 jhinton

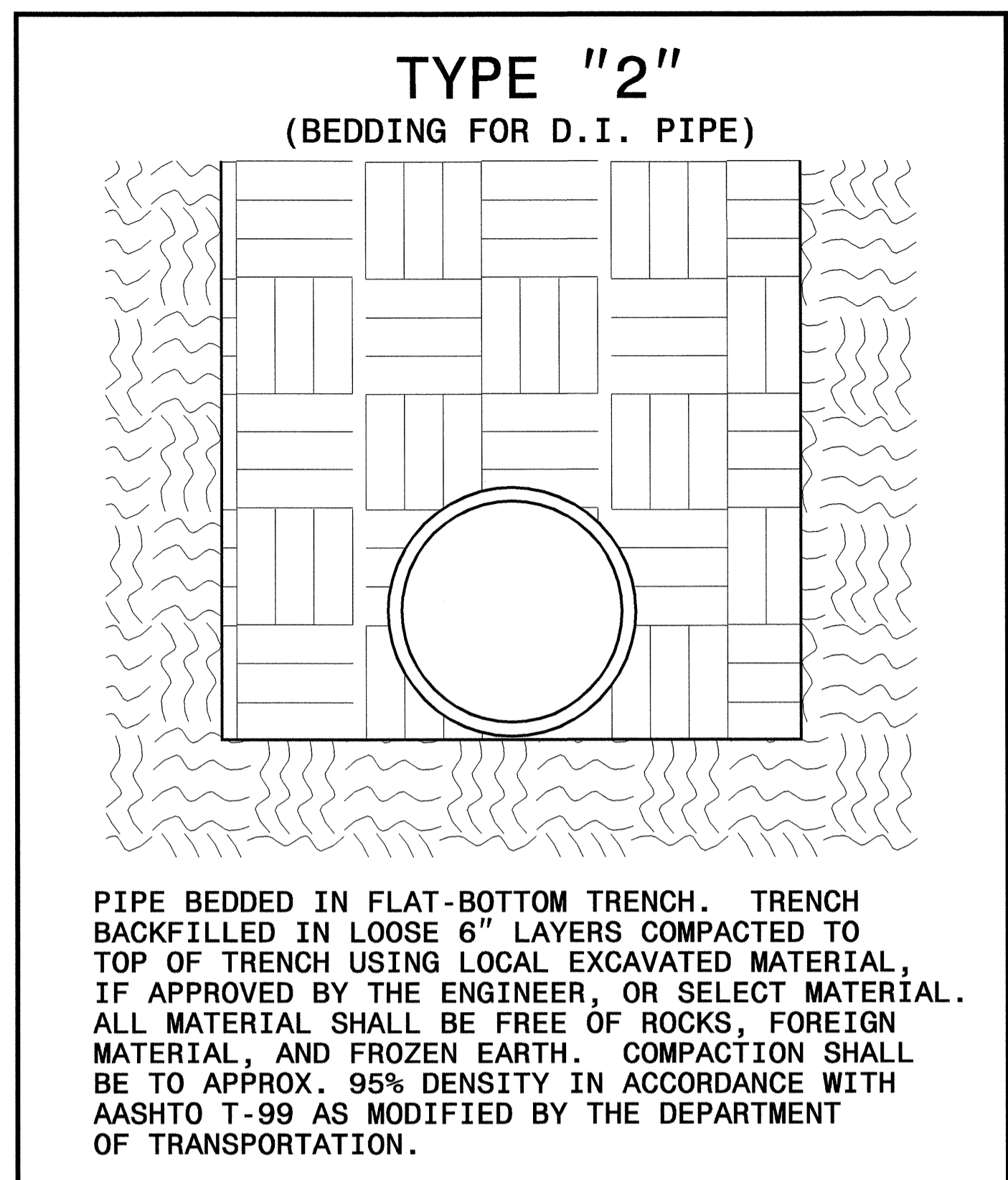
8/17/99

PROJECT REFERENCE NO. W-4404	SHEET NO. UC-5
DESIGNED BY: DHP	
DRAWN BY: DHP	
CHECKED BY: JSM	
APPROVED BY: JSM	
REVISED:	
NORTH CAROLINA DEPARTMENT OF TRANSPORTATION DESIGN SERVICES UNIT PHONE: (919) 250-4128 FAX: (919) 250-4119	
UTILITY CONSTRUCTION PLANS ONLY	

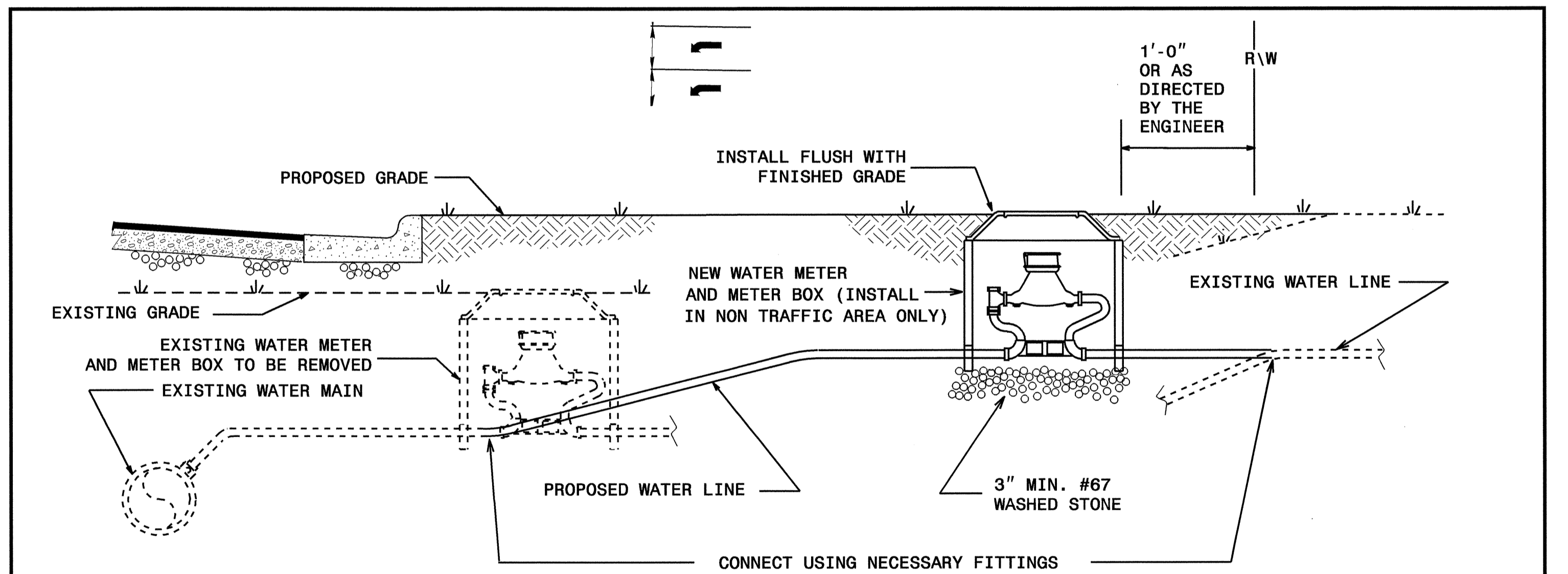
UTILITY CONSTRUCTION



NOTES:
 CONCRETE- SHALL ALL BE 3000 PS MINIMUM AND TRANSIT MIXED FOR PVC PIPE BEDDING SHALL CONFORM TO STANDARD DETAIL U-4.
 STEEL RODS AND BOLTS- ONCE INSTALLED AND TIGHT, SHALL BE COATED WITH TWO COATS OF BITUMINOUS BASE PAINT.



MAXIMUM TRENCH WIDTH AT TOP OF PIPE			
NOMINAL PIPE SIZE (INCHES)	TRENCH WIDTH (INCHES)	NOMINAL PIPE SIZE (INCHES)	TRENCH WIDTH (INCHES)
4	28	20	44
6	30	24	48
8	32	30	54
10	34	36	60
12	36	42	66
14	38	48	72
16	40	54	78
18	42		

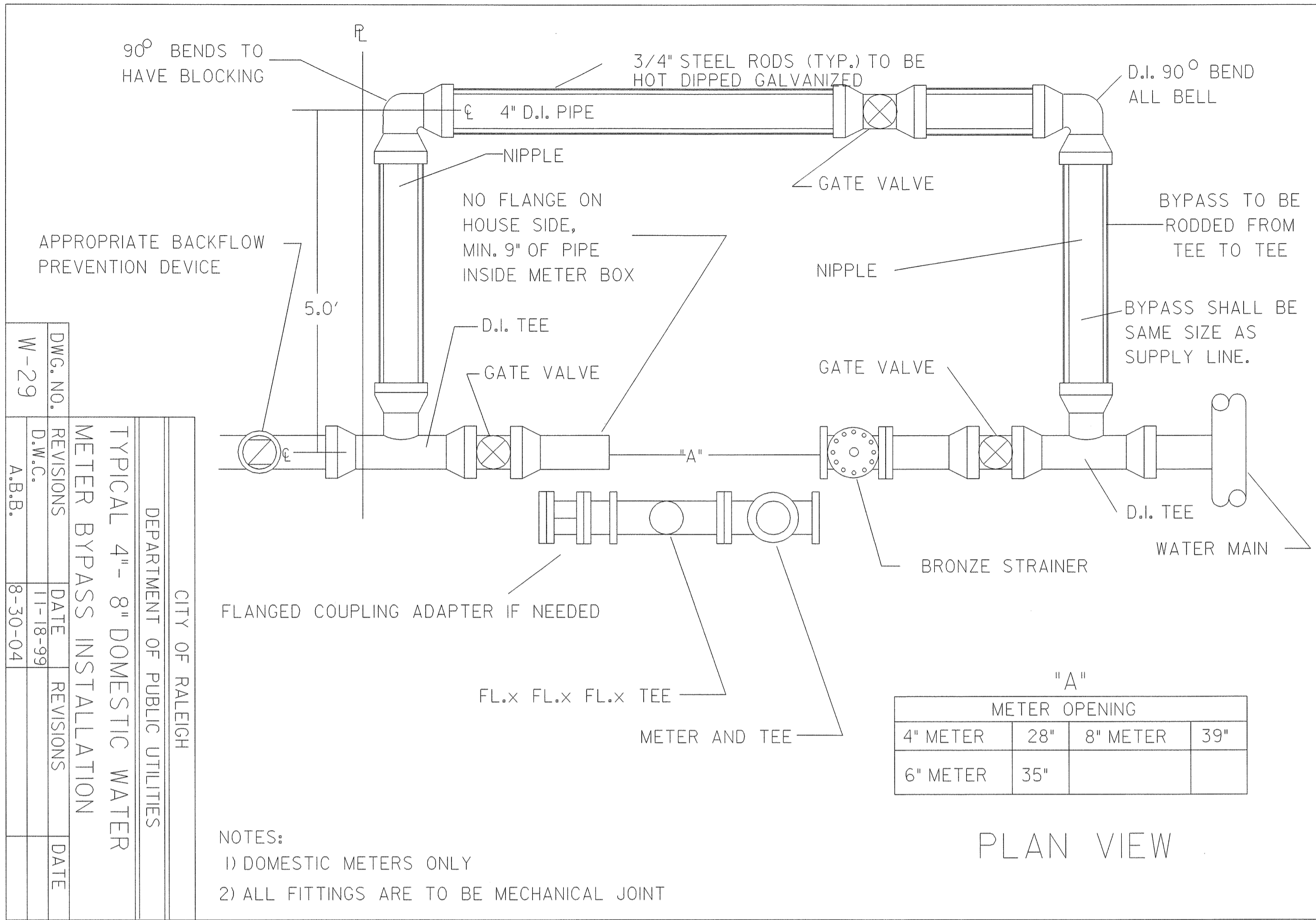


- NOTES:**
1. NEW WATER METERS SHALL INCLUDE THE INSTALLATION AT THE APPROPRIATE LOCATION OF THE WATER METER, METER SETTER AND YOKE, METER VALVES, AND METER BOX WITH LID.
 2. THE NEW WATER SERVICE LINE SHALL BE OF THE SAME TYPE AND GRADE AS THE EXISTING WATER SERVICE LINE UNLESS OTHERWISE SHOWN ON THE PLANS OR DIRECTED BY THE ENGINEER.
 3. THE NEW WATER SERVICE LINE SHALL BE INSTALLED WITH A MINIMUM OF 36" COVER BELOW FINISHED GRADE.

WATER METER DETAIL

I:\MAY-2006\15138
 st\spec\cde\ut\11-11-06\jhm\w4404a\w4404d1_uc5.rps
 11-11-06

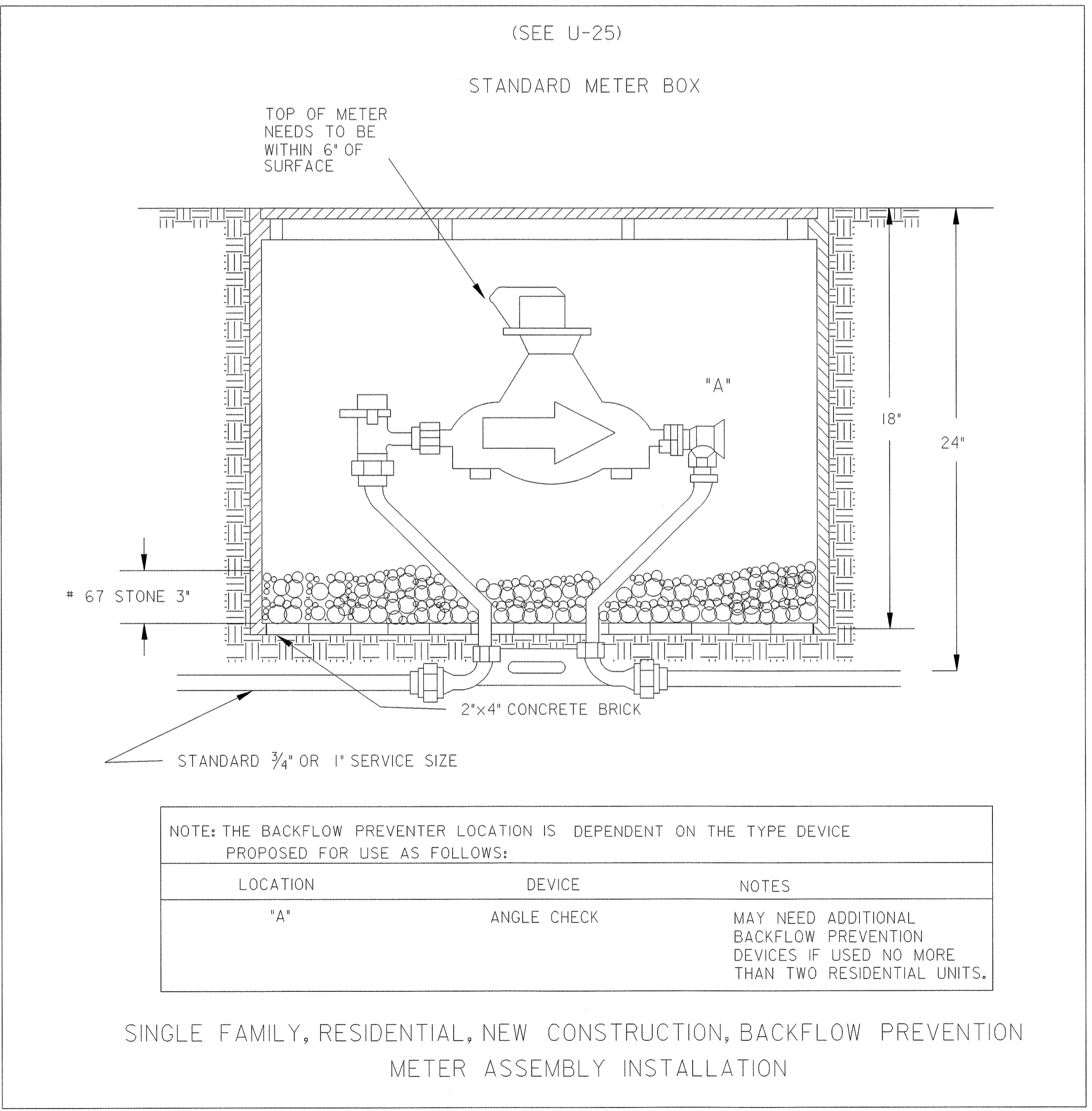
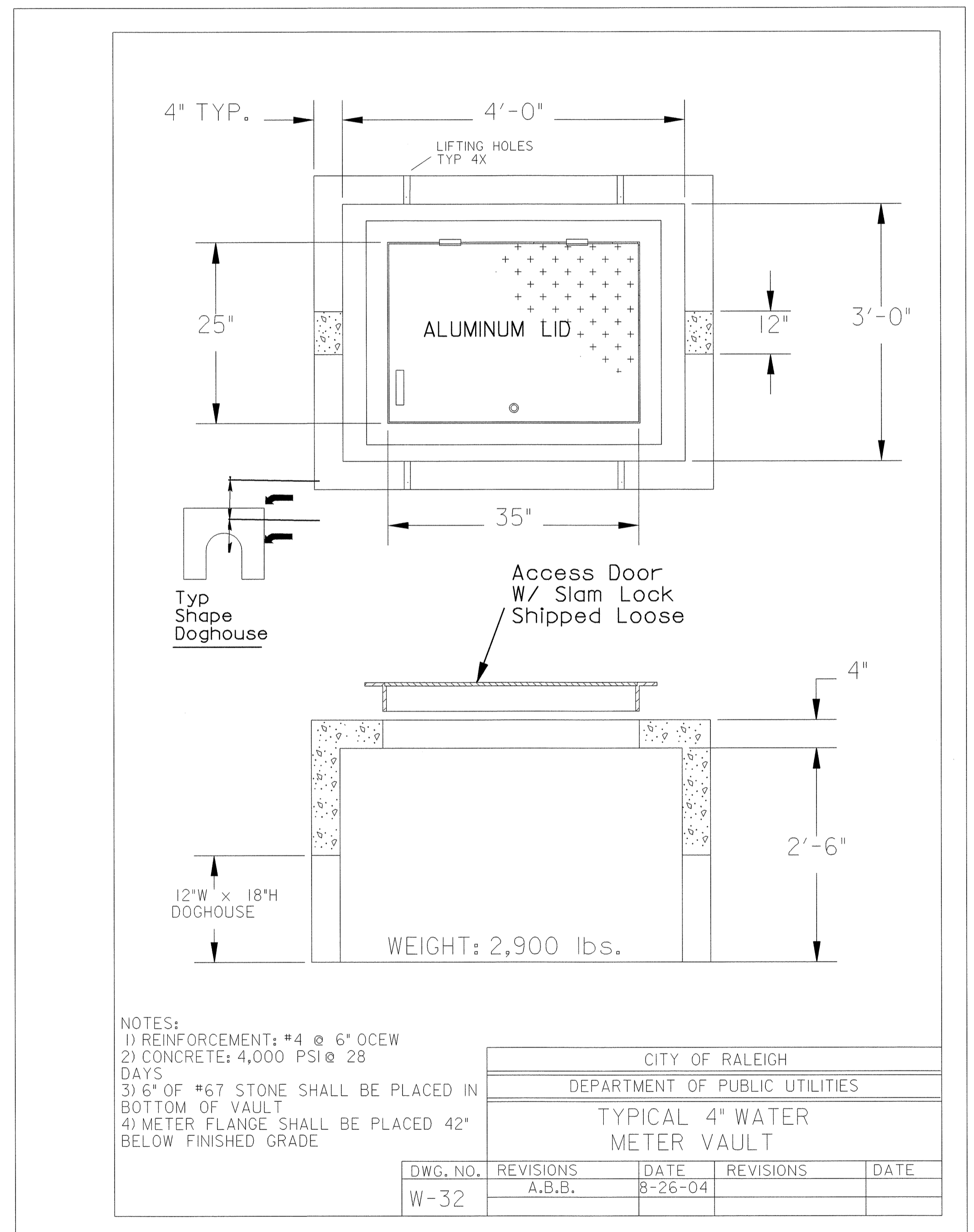
UTILITY CONSTRUCTION



DWG. NO.	DATE	REVISIONS	DATE
W-29	11-18-99		
REVISIONS	DATE	REVISIONS	DATE
A.B.B.	8-30-04		

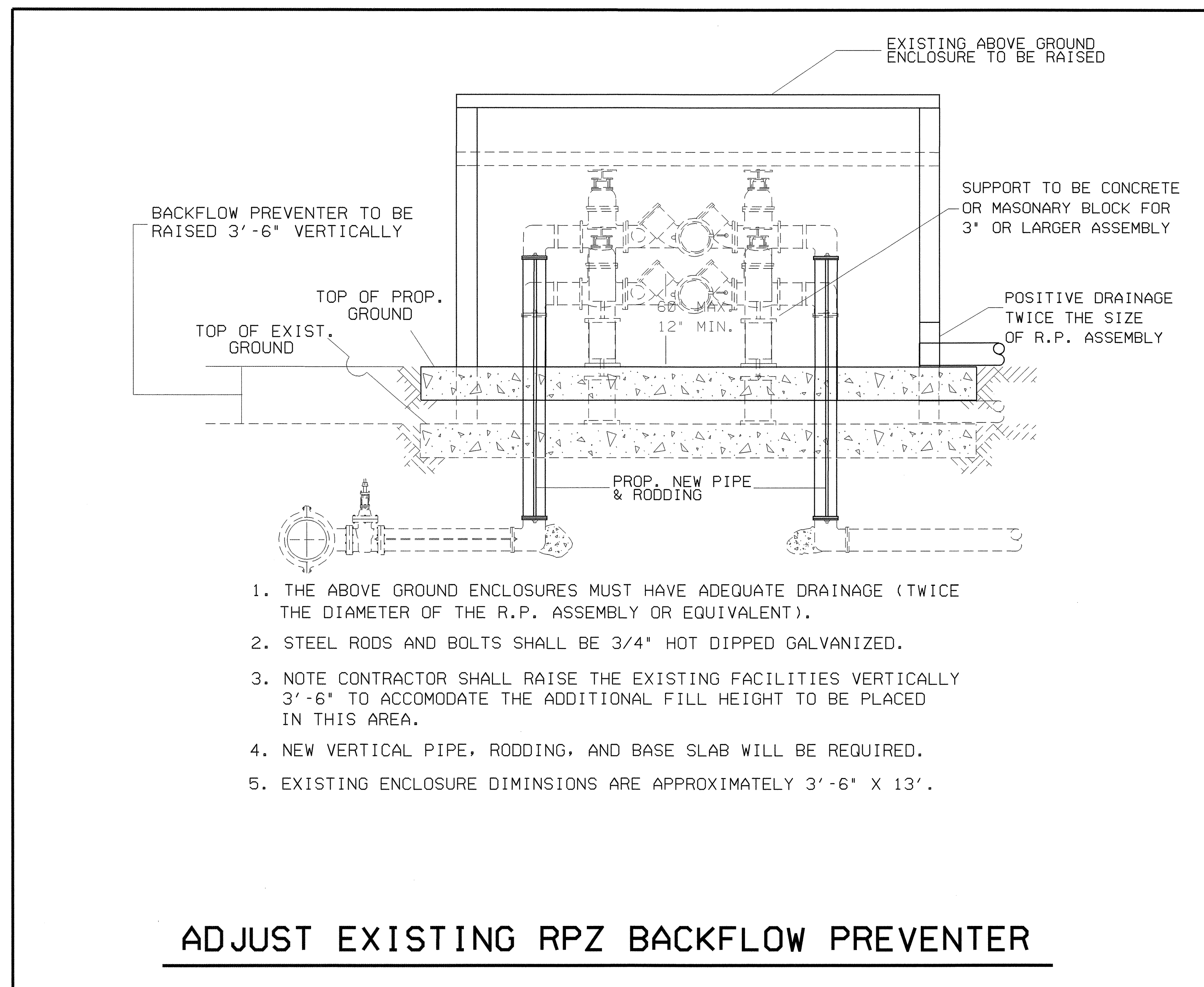
TYPICAL 4" - 8" DOMESTIC WATER METER BYPASS INSTALLATION

DEPARTMENT OF PUBLIC UTILITIES
CITY OF RALEIGH



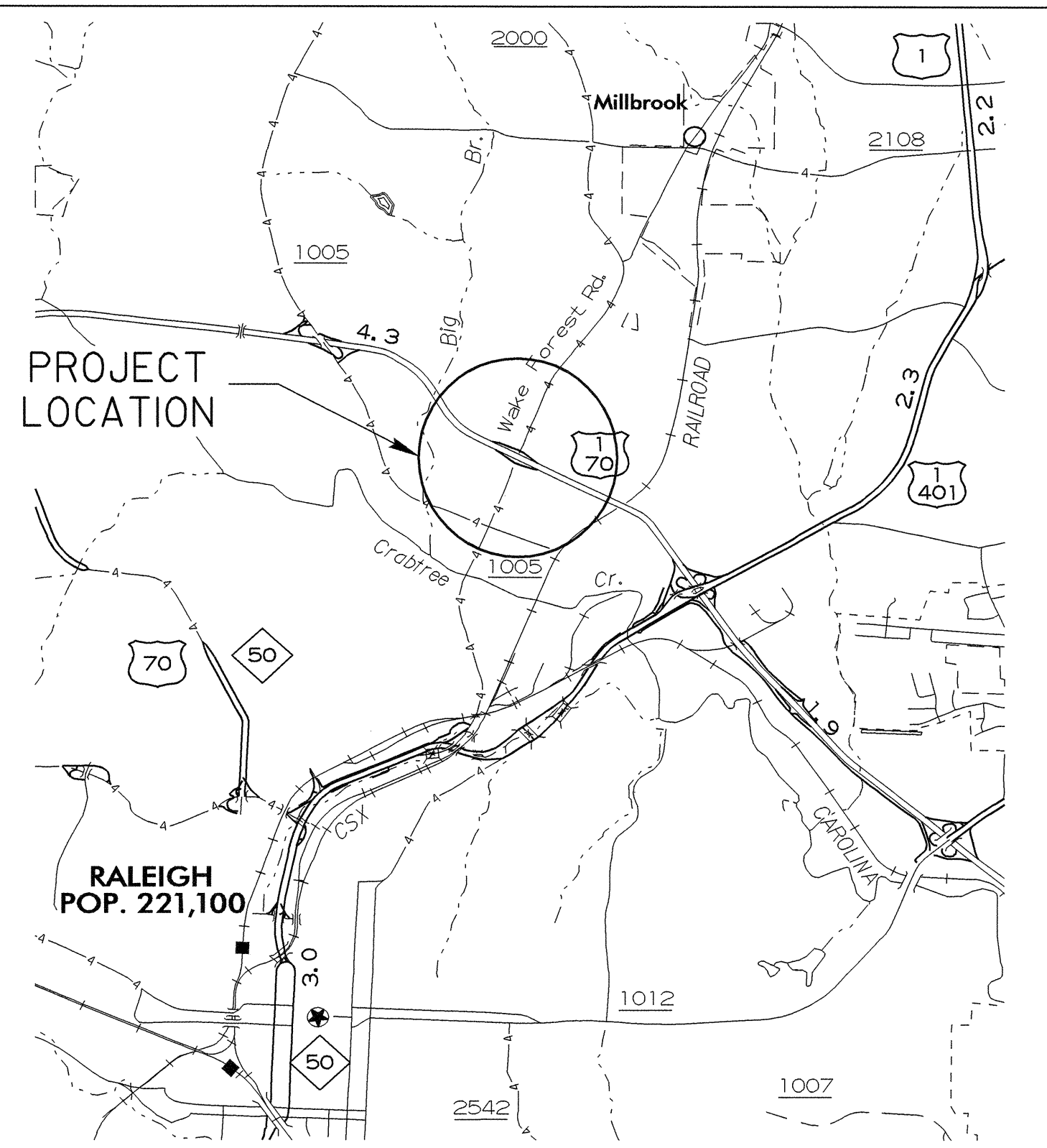
PROJECT REFERENCE NO. W-4404	SHEET NO. UC-7
DESIGNED BY: DHP	
DRAWN BY: DHP	
CHECKED BY: JSM	
APPROVED BY: JSM	
REVISED:	
NORTH CAROLINA DEPARTMENT OF TRANSPORTATION	
DESIGN SERVICES UNIT PHONE: (919)250-4128 FAX: (919)250-4119	
UTILITY CONSTRUCTION PLANS ONLY	

UTILITY CONSTRUCTION



T.I.P. NO.	SHEET NO.
W-4404	UO-1

TIP: W-4404

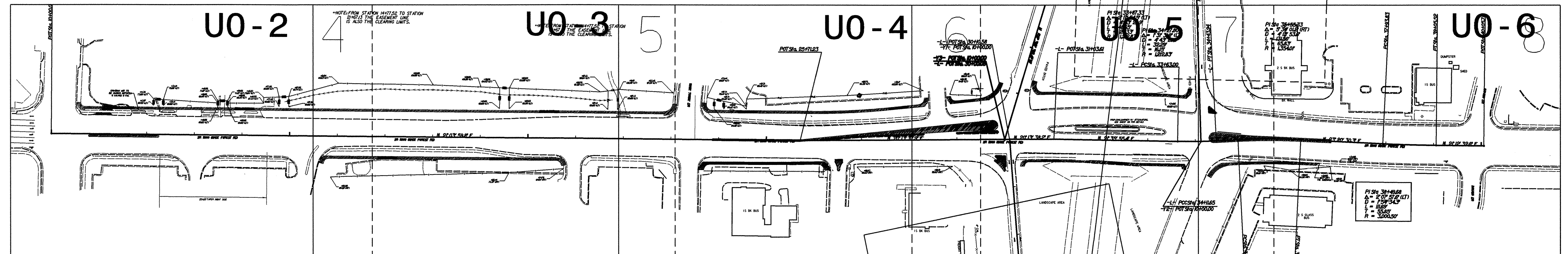
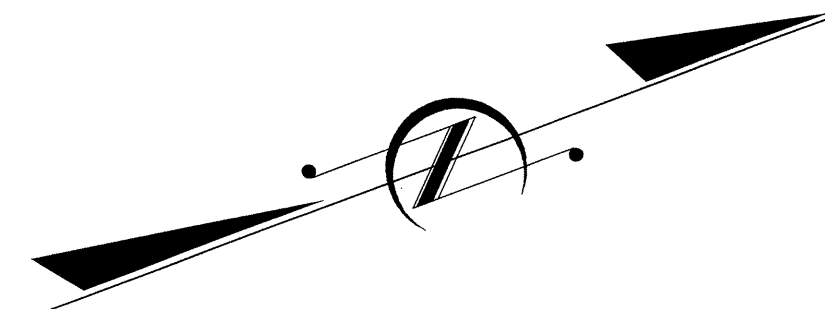


VICINITY MAP SHOWING
LOCATION OF PROJECT 35156.13

STATE OF NORTH CAROLINA
DIVISION OF HIGHWAYS

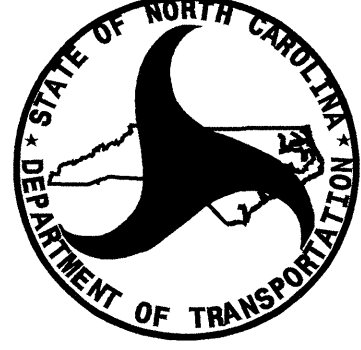
UTILITIES BY OTHERS PLANS WAKE COUNTY

**LOCATION: SR 2000 (WAKE FOREST ROAD)
BETWEEN SR 1005 (SIX FORKS ROAD)
AND NAVAHO DRIVE**
TYPE OF WORK: GRADE, DRAIN, BASE, PAVE.



INDEX OF SHEETS	
SHEET NO.	DESCRIPTION
UO-1	TITLE SHEET
UO-2 TO UO-6	UTILITIES BY OTHERS PLAN SHEETS

WATER AND SEWER OWNERS ON PROJECT
(1) PROGRESS ENERGY (POWER)
(2) BELL SOUTH (TELEPHONE)
(3) TIME WARNER CABLE (CATV)
(4) PSNC ENERGY (GAS)



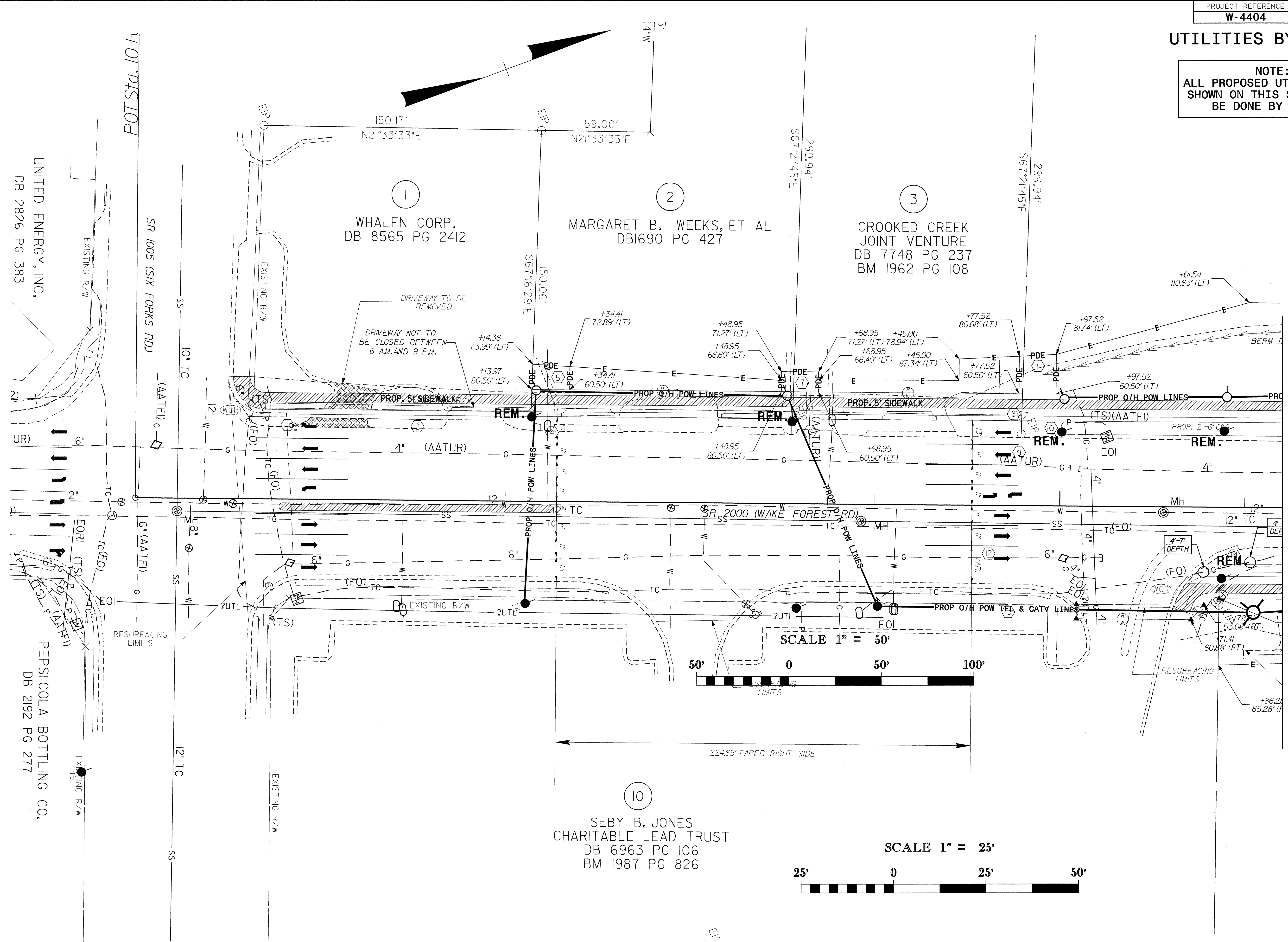
PREPARED IN THE OFFICE OF:
**DIVISION OF HIGHWAYS
PROJECT SERVICES
UTILITY SECTION**

1591 MAIL SERVICES CENTER
RALEIGH, NC 27699-1591
PHONE (919) 250-4128
FAX (919) 250-4119

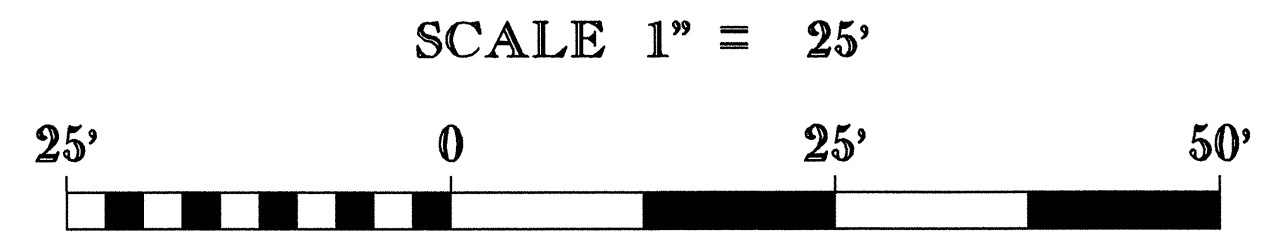
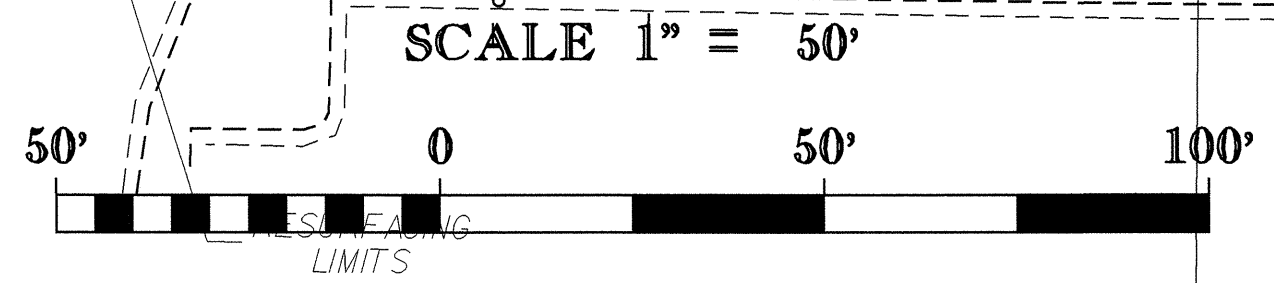
Roger Worthington, P.E.	UTILITIES SECTION ENGINEER
Steve McKee, P.E.	UTILITIES SQUAD LEADER PROJECT ENGINEER
Danny Puryear	UTILITIES PROJECT DESIGNER
John Hinton, PE	

UTILITIES BY OTHERS

NOTE:
ALL PROPOSED UTILITY WORK
SHOWN ON THIS SHEET WILL
BE DONE BY OTHERS



MATCH TO SHEET UO-3



8/17/99
22-NOV-2006 12:42
S:\PROJECTS\W4404\UO2\UO2.dwg
S:\PROJECTS\W4404\UO2\UO2.psh

UNITED ENERGY, INC.
DB 2826 PG 383

PEPSICOLA BOTTLING CO.
DB 2192 PG 277

1
WHALEN CORP.
DB 8565 PG 2412

2
MARGARET B. WEEKS, ET AL
DB1690 PG 427

3
CROOKED CREEK
JOINT VENTURE
DB 7748 PG 237
BM 1962 PG 108

10
SEBY B. JONES
CHARITABLE LEAD TRUST
DB 6963 PG 106
BM 1987 PG 826

POT Sta. 10+1

SR 1005 (SIX FORKS RD)

SR 2000 (WAKE FOREST RD)

DRIVEWAY TO BE REMOVED
DRIVEWAY NOT TO BE CLOSED BETWEEN 6 A.M. AND 9 P.M.

PROP. 5' SIDEWALK

PROP. 5' SIDEWALK

PROP. O/H POW TEL & CATV LINES

22465' TAPER RIGHT SIDE

RESURFACING LIMITS

RESURFACING LIMITS

UR

UR

UR

UR

UR

UR

UR

UR

UR

UR

UR

UR

UR

UR

UR

UR

UR

UR

UR

UR

UR

UR

UR

UR

UR

UR

UR

UR

UR

UR

UR

UR

UR

UR

UR

UR

UR

UR

UR

UR

UR

UR

UR

UR

UR

UR

UR

UR

UR

UR

UR

UR

UR

UR

UR

UR

UR

UR

UR

UR

UR

UR

UR

UR

UR

UR

UR

UR

UR

UR

UR

UR

UR

UR

UR

UR

UR

UR

UR

UR

UR

UR

UR

UR

UR

UR

UR

UR

UR

UR

UR

UR

UR

UR

UR

UR

UR

UR

UR

UR

UR

UR

UR

UR

UR

UR

UR

UTILITIES BY OTHERS

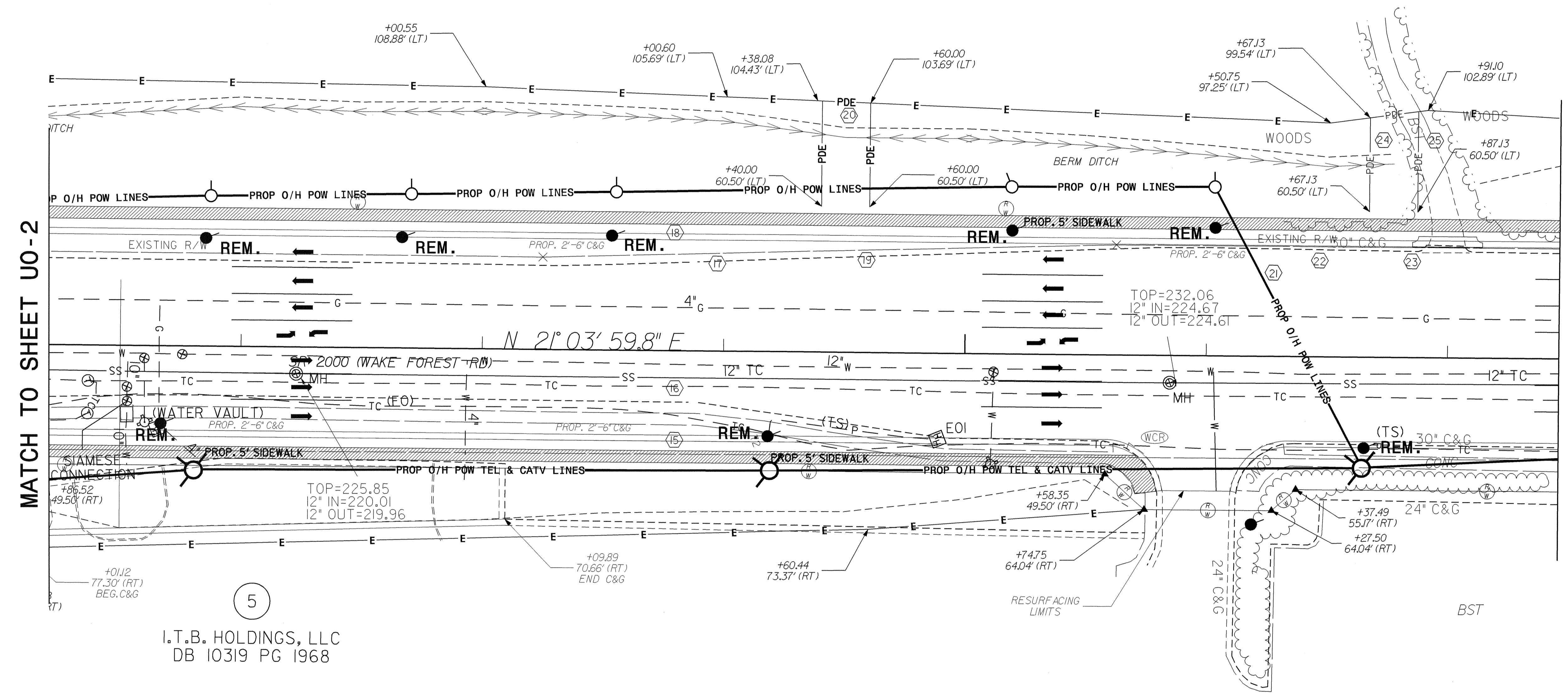
NOTE:
ALL PROPOSED UTILITY WORK SHOWN ON THIS SHEET WILL BE DONE BY OTHERS

E: FROM STATION 14+77.52 TO STATION 21+67.13 THE EASEMENT LINE IS ALSO THE CLEARING LIMITS.

**NOTE: FROM STATION 14+77.52 TO STATION 21+67.13 THE EASEMENT LINE IS ALSO THE CLEARING LIMITS.

4
CHARLES W. GADDY
DB 2146 PG 95

4
CHARLES W. GADDY
DB 2146 PG 95

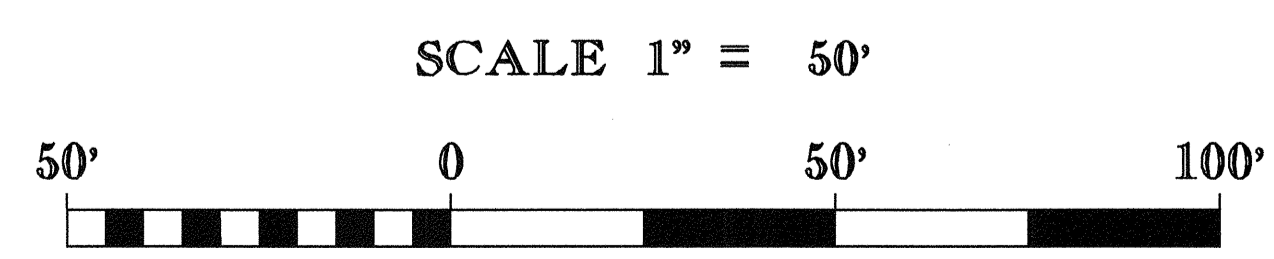


MATCH TO SHEET UO-2

MATCH TO SHEET UO-4

5
I.T.B. HOLDINGS, LLC
DB 10319 PG 1968

5
I.T.B. HOLDINGS, LLC
DB 10319 PG 1968

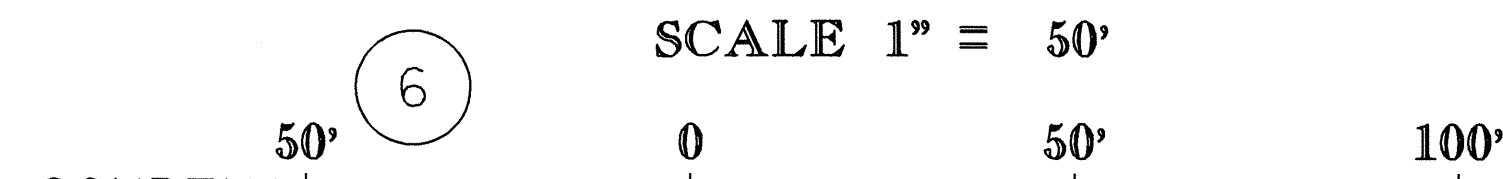


8/17/99

22-NOV-2006 12:42:33
S:\PROJECTS\2006\11-22-06\w4404s05_uo3\ps\PS-OC34DTBOND.dwg
I.T.B. HOLDINGS, LLC

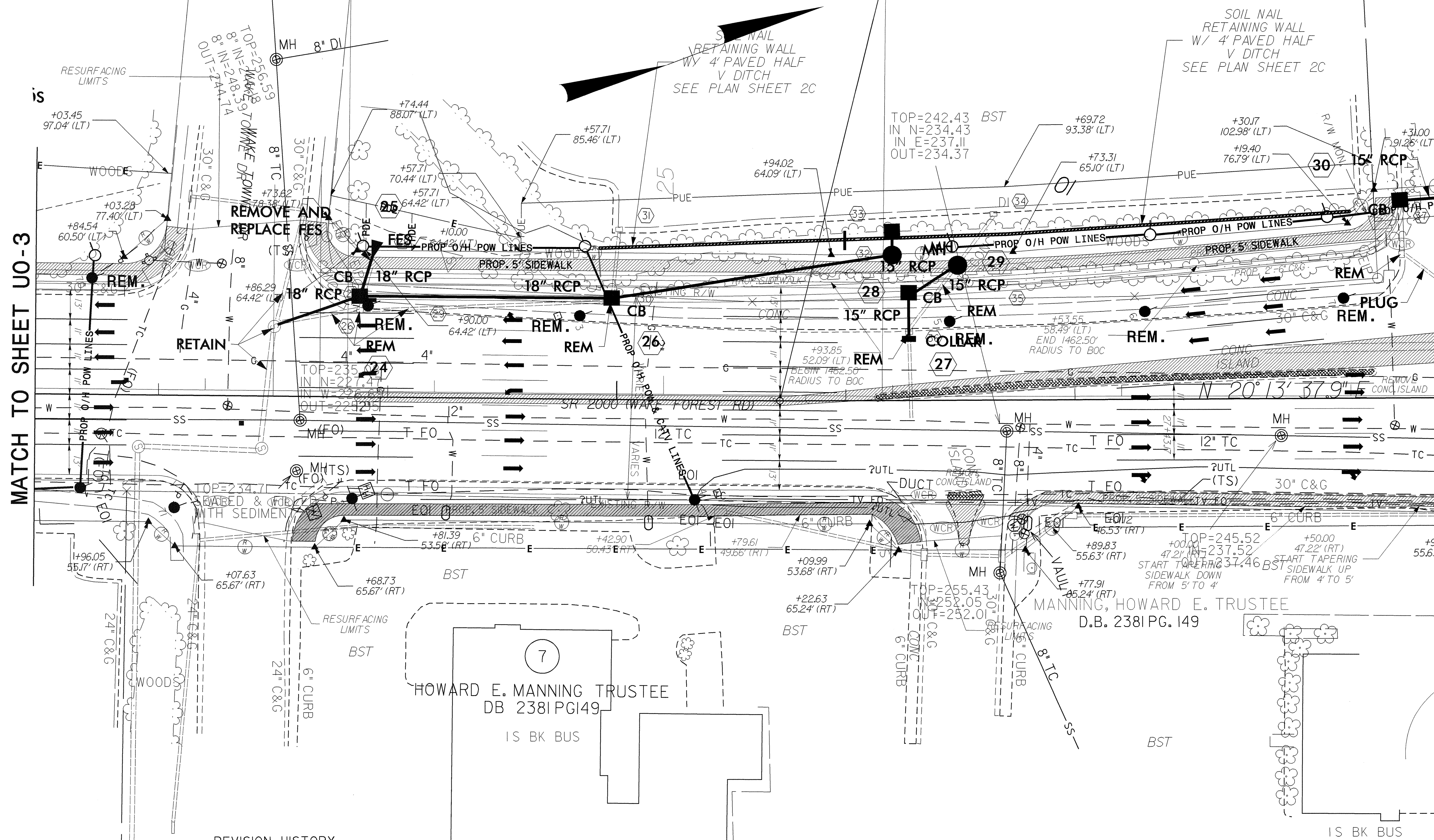
UTILITIES BY OTHERS

NOTE:
ALL PROPOSED UTILITY WORK
SHOWN ON THIS SHEET WILL
BE DONE BY OTHERS



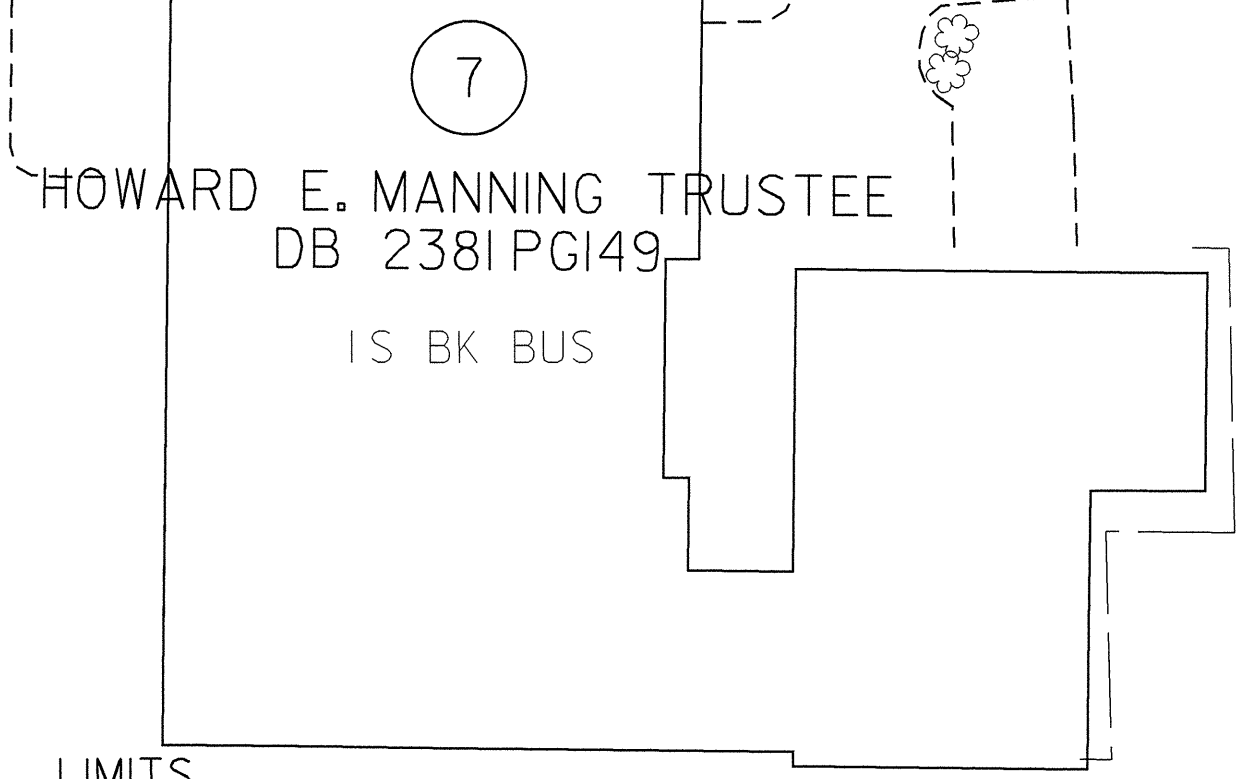
6
COURTYARD BY MARRIOTT LIMITED PARTNERSHIP
DB 3888 PG 280
BM 1985 PG 1952
COURTYARD BY MARRIOTT LIMITED PARTNERSHIP
D.B. 3888 PG. 280
POT Sta. 23+62.05 -L-
POT Sta. 25+71.23

6
COURTYARD BY MARRIOTT LIMITED PARTNERSHIP
DB 3888 PG 280
BM 1985 PG 1952
POT Sta. 25+95.41



MATCH TO SHEET UO-3

MATCH TO SHEET UO-5



7
MANNING, HOWARD E. TRUSTEE
D.B. 2381 PG. 149

REVISION HISTORY

SO-DEEP #	TIP	SUBMITTAL	LIMITS
NCD7378	W4404	5/16/01	BL-101 TO BL-105
NCD8299	W4404	11/07/02	BL-105 TO 100' S. OF INT. SIX FORKS ROAD

7
HOWARD E. MANNING TRUSTEE
DB 2381 PG 149

8/17/99
22-NOV-2006 12:59
S:\PROJECTS\W4404\W4404s06_uo4.psh

UTILITIES BY OTHERS

NOTE:
ALL PROPOSED UTILITY WORK
SHOWN ON THIS SHEET WILL
BE DONE BY OTHERS

WACHOVIA BANK AND
STATE EMPLOYEES, A.
CORP. BDB269 FROM 490
DB 9219 PG 348

PI Sta 33+87.33
 $\Delta = 2^{\circ} 17' 54.5"$ (LT)
 $D = 4^{\circ} 43' 26.9"$
 $L = 48.65'$
 $T = 24.33'$
 $R = 1,212.83'$

PI Sta 34+27.50
 $\Delta = 1^{\circ} 31' 31.8"$ (LT)
 $D = 4^{\circ} 43' 26.9"$
 $L = 32.20'$
 $T = 16.15'$
 $R = 1,212.83'$

SEE SHEET 10

-L- POT Sta. 30+10.58
-Y1- POT Sta. 10+00.00

-Y3- POT Sta. 10+00.00
-L- POT Sta. 30+00.00

POT Sta. 31+03.61

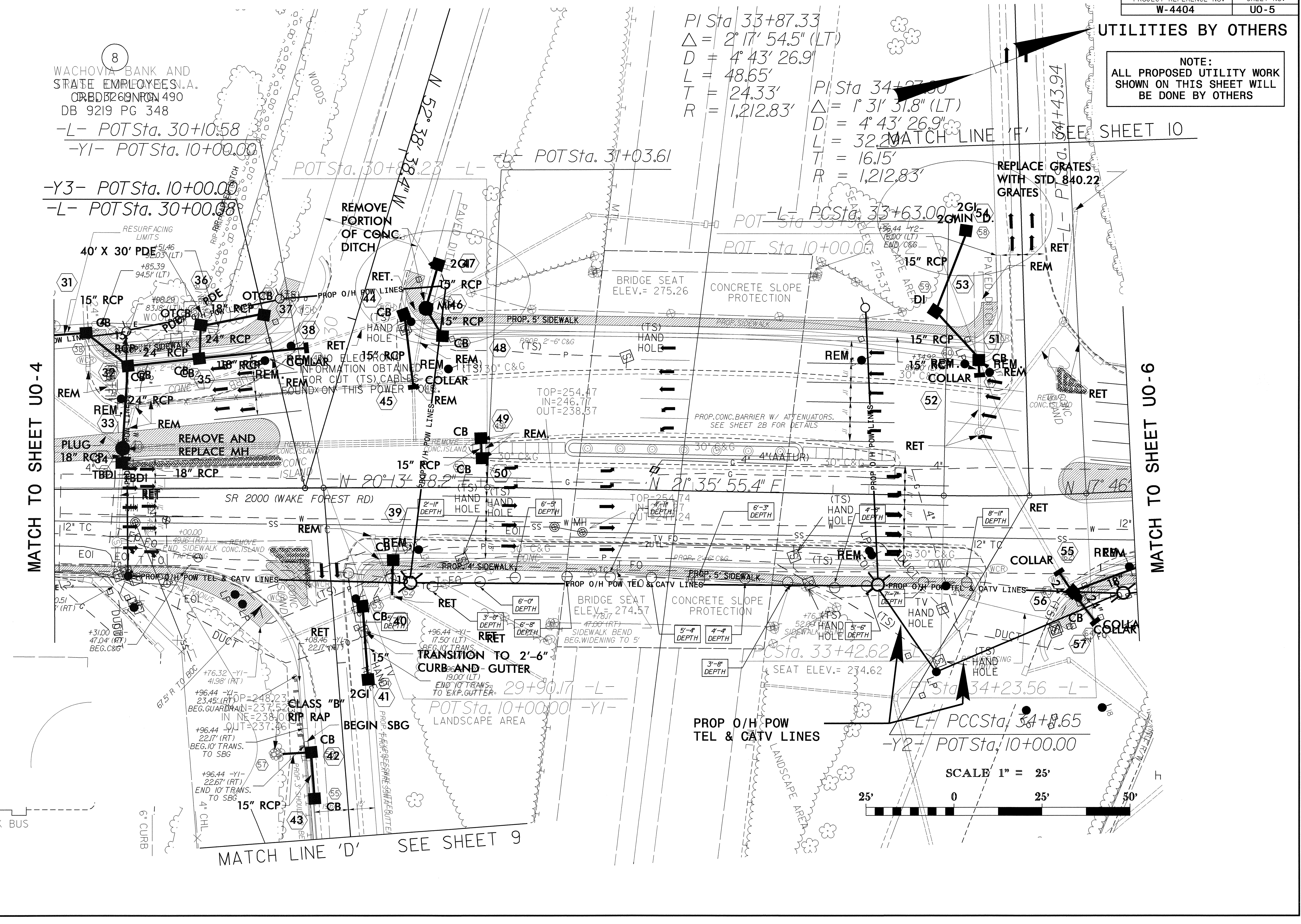
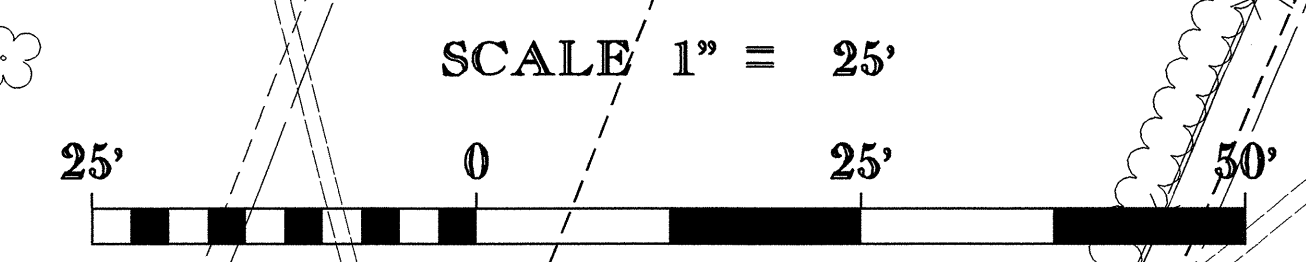
MATCH TO SHEET UO-4

MATCH TO SHEET UO-6

22-NOV-2006 12:40
D:\Users\jasm\jdh\w4404a\w4404s07_uo5.psh
3313 USER:JDM

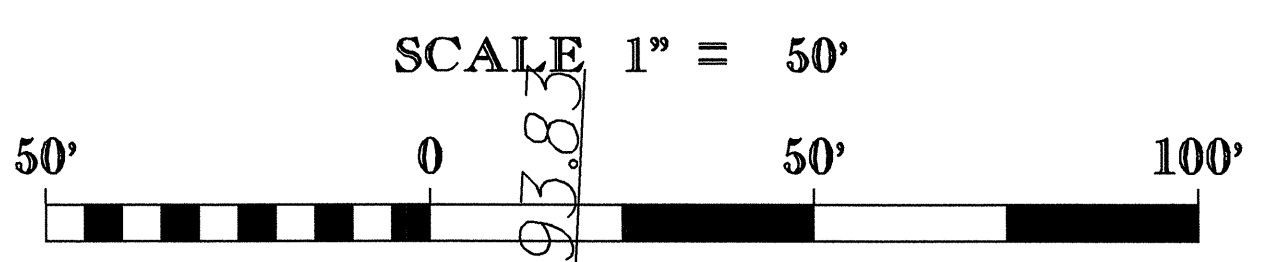
K BUS

MATCH LINE 'D' SEE SHEET 9

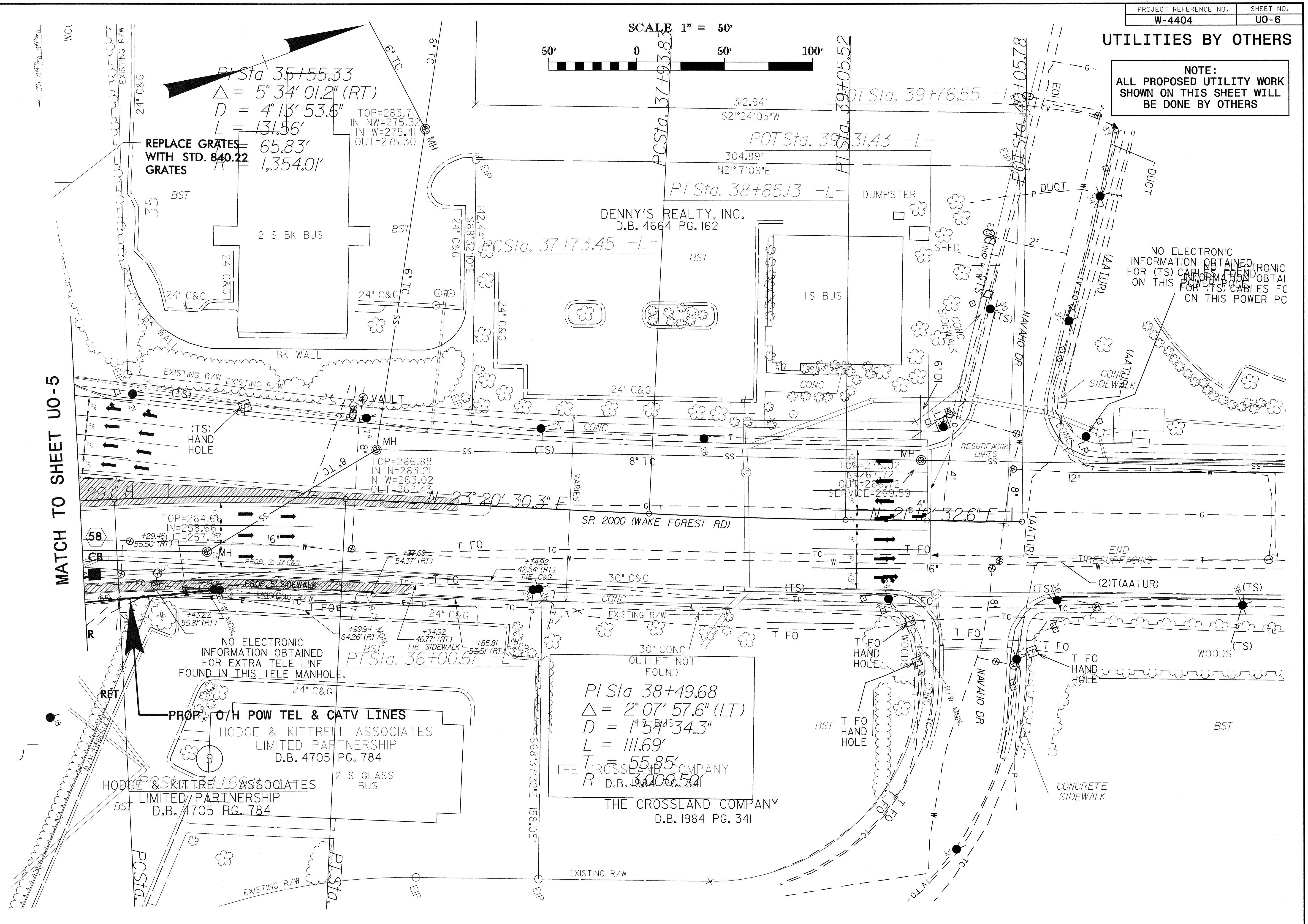


UTILITIES BY OTHERS

NOTE:
ALL PROPOSED UTILITY WORK
SHOWN ON THIS SHEET WILL
BE DONE BY OTHERS



MATCH TO SHEET UO-5



$PI\ Sta\ 35+55.33$
 $\Delta = 5^{\circ}34'01.2'' (RT)$
 $D = 4^{\circ}13'53.6''$
 $L = 131.56'$
REPLACE GRATES WITH STD. 840.22 GRATES
 $65.83'$
 $1,354.01'$

$PI\ Sta\ 38+49.68$
 $\Delta = 2^{\circ}07'57.6'' (LT)$
 $D = 1^{\circ}54'34.3''$
 $L = 111.69'$
 $T = 55.85'$
 $R = 3,000.50'$
THE CROSSLAND COMPANY
 D.B. 1984 PG. 341

NO ELECTRONIC INFORMATION OBTAINED FOR EXTRA TELE LINE FOUND IN THIS TELE MANHOLE.

PROP. O/H POW TEL & CATV LINES
HODGE & KITTRELL ASSOCIATES LIMITED PARTNERSHIP
 D.B. 4705 PG. 784
HODGE & KITTRELL ASSOCIATES LIMITED PARTNERSHIP
 D.B. 4705 PG. 784

NO ELECTRONIC INFORMATION OBTAINED FOR (TS) CABLE FOUND ON THIS POWER PC

02-MAY-2006 16:10 SS:\specdes\utilities\jhm\jhw4404a\W4404a08_UO6.PSH