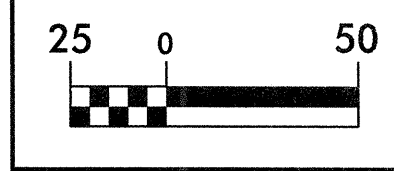


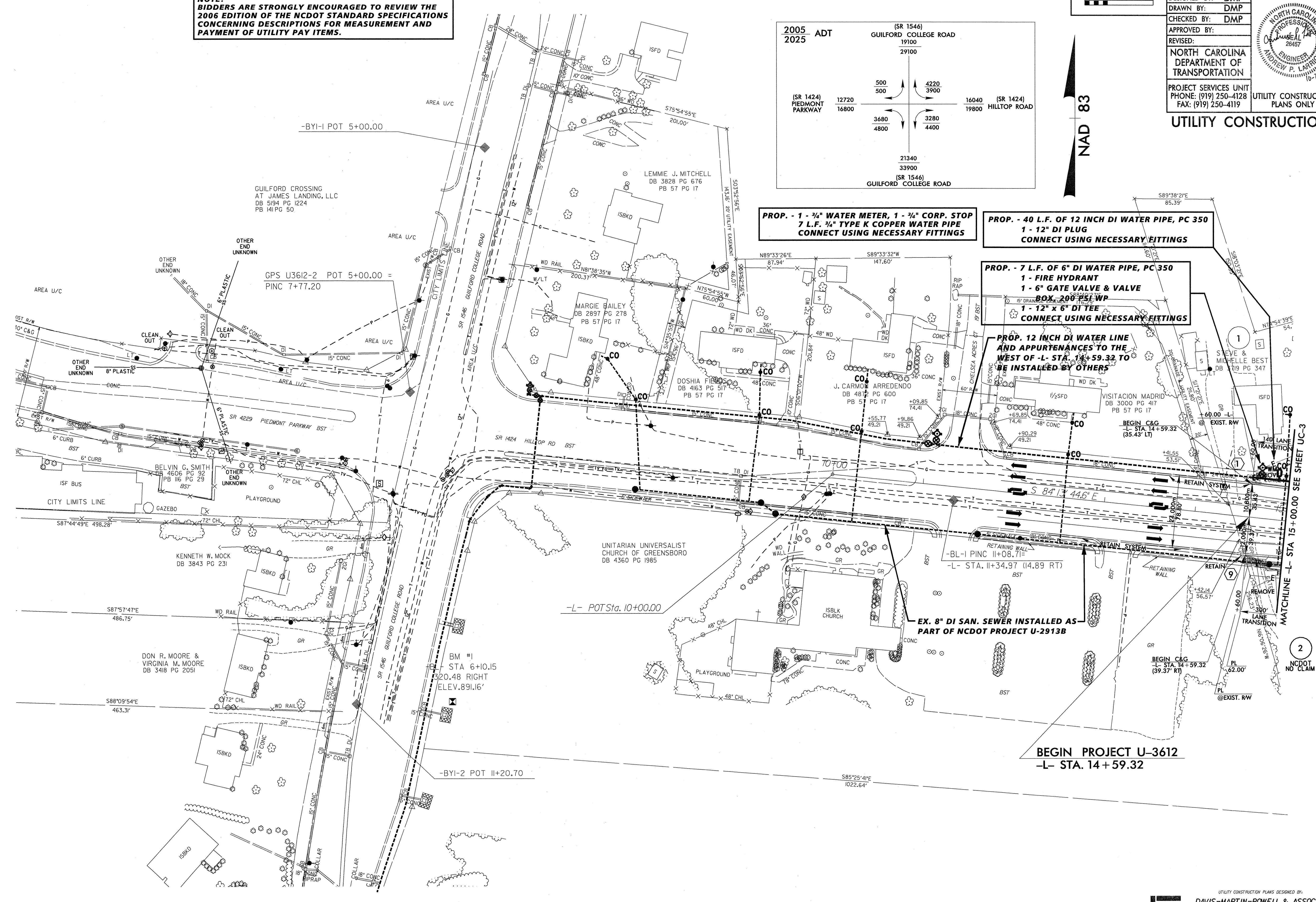
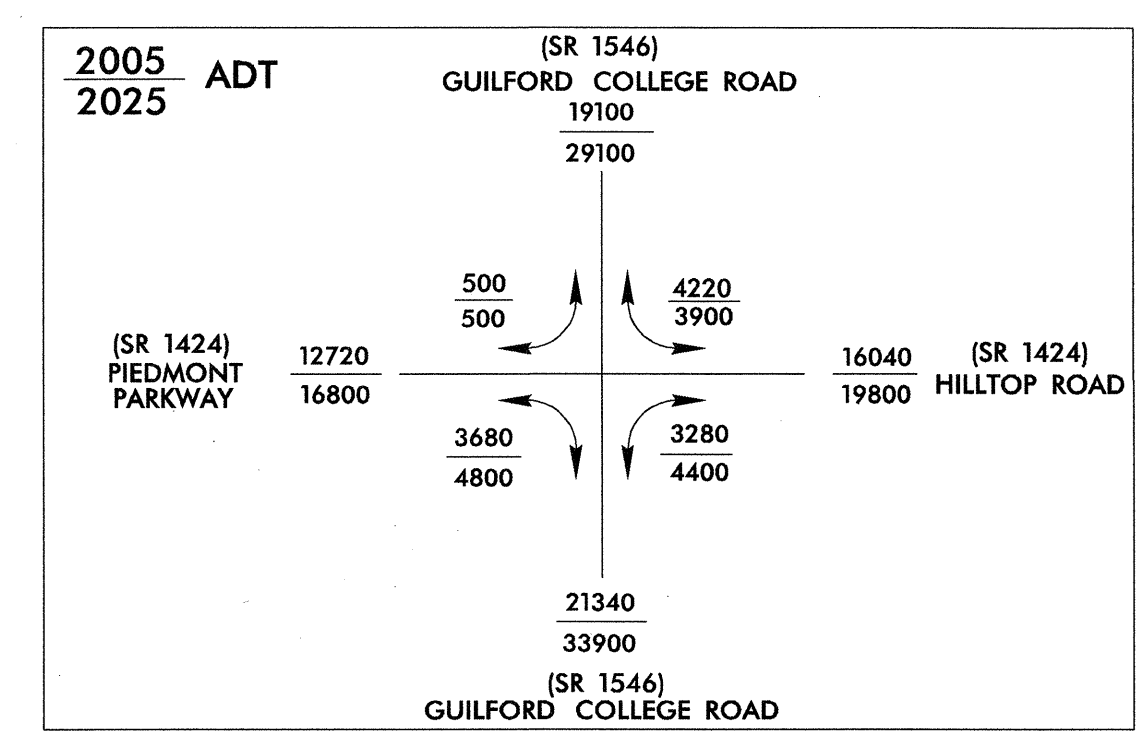


**NOTE:**  
**BIDDERS ARE STRONGLY ENCOURAGED TO REVIEW THE 2006 EDITION OF THE NCDOT STANDARD SPECIFICATIONS CONCERNING DESCRIPTIONS FOR MEASUREMENT AND PAYMENT OF UTILITY PAY ITEMS.**

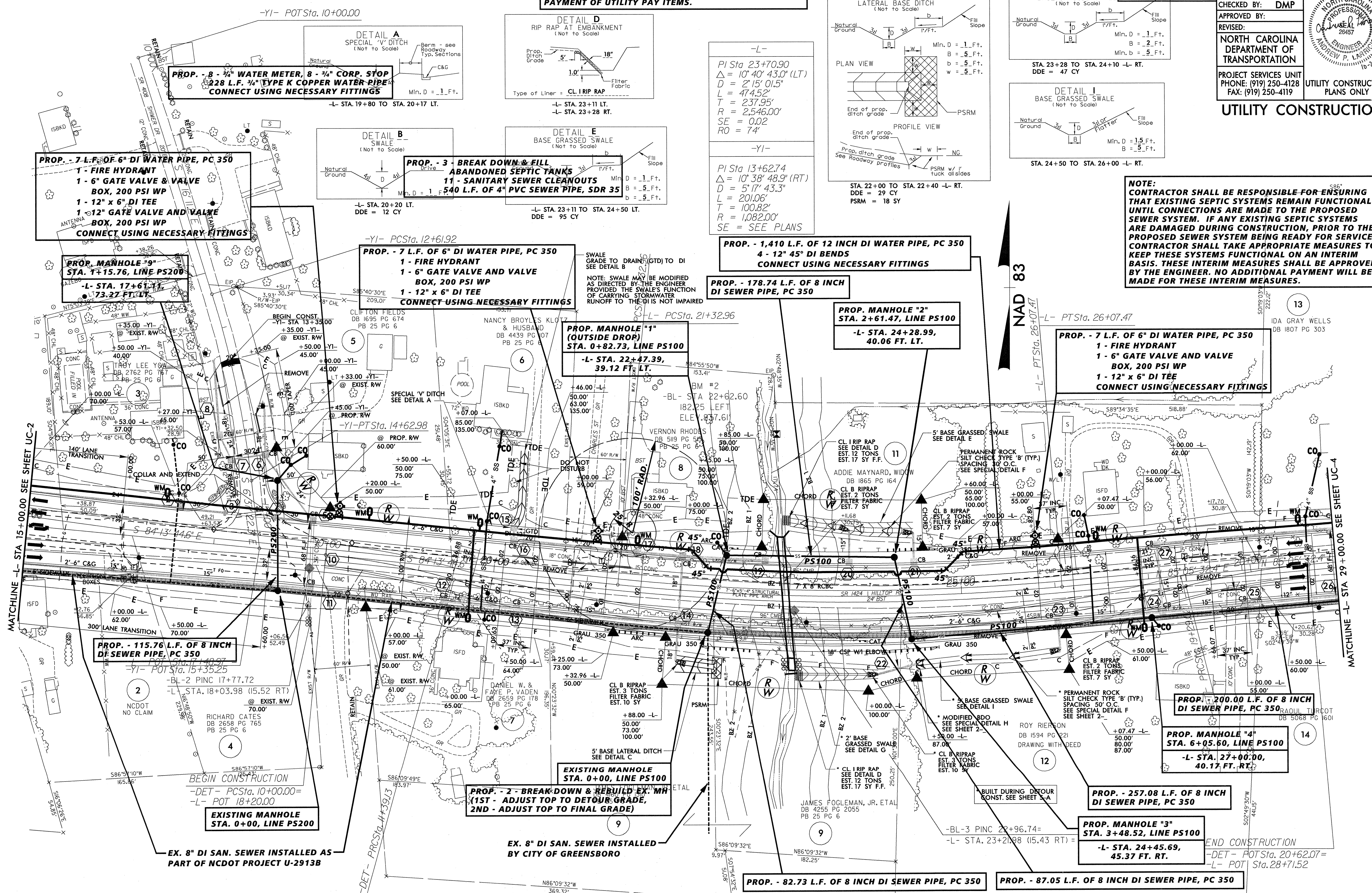
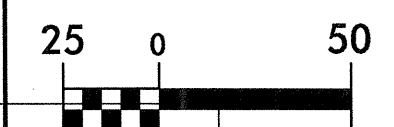


NAD 83

PROJECT REFERENCE NO. U-3612	SHEET NO. UC-2
DESIGNED BY: DMP	
DRAWN BY: DMP	
CHECKED BY: DMP	
APPROVED BY:	
REVISED:	
NORTH CAROLINA DEPARTMENT OF TRANSPORTATION PROJECT SERVICES UNIT PHONE: (919) 250-4128 FAX: (919) 250-4119	
UTILITY CONSTRUCTION PLANS ONLY	
UTILITY CONSTRUCTION PLANS ONLY	



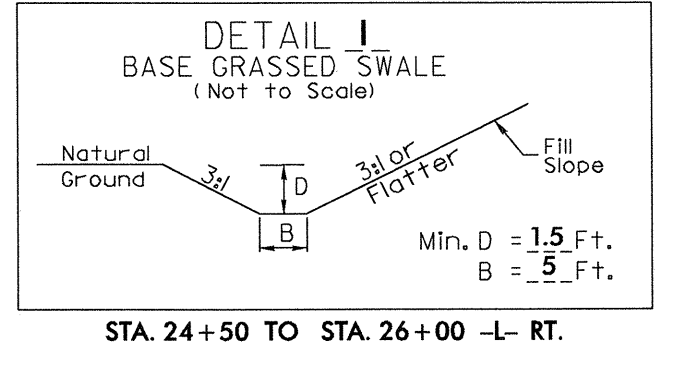
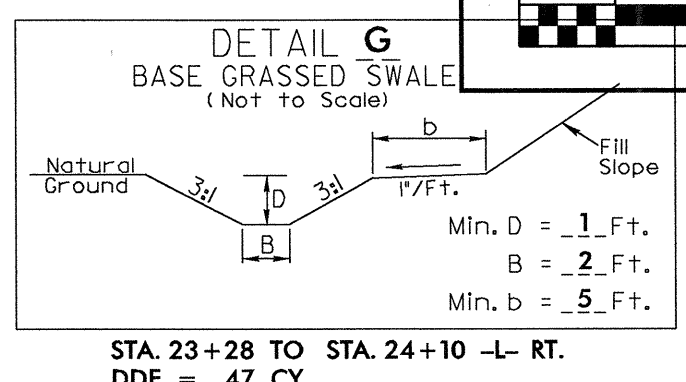
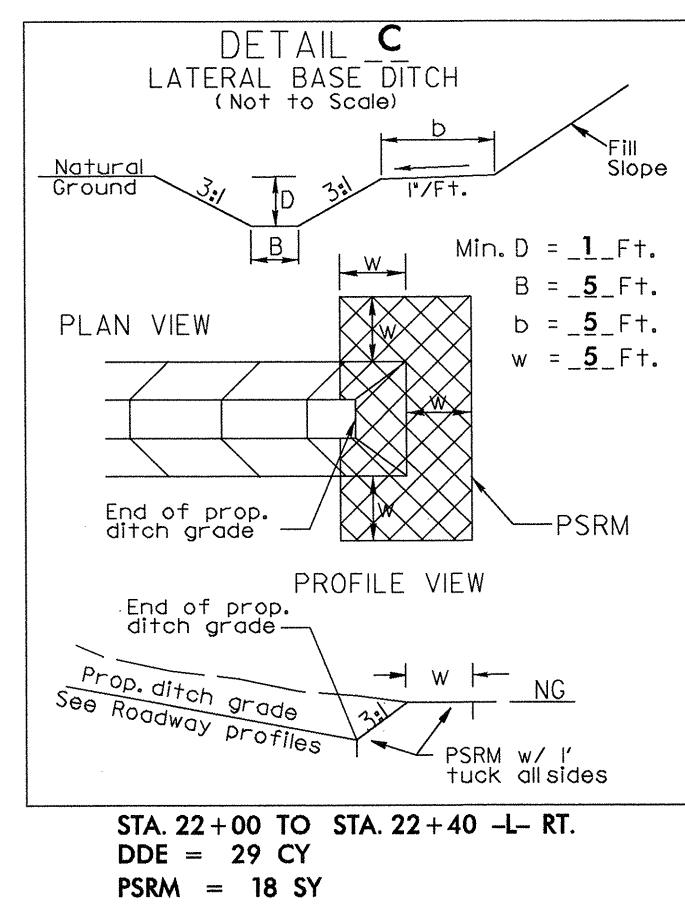
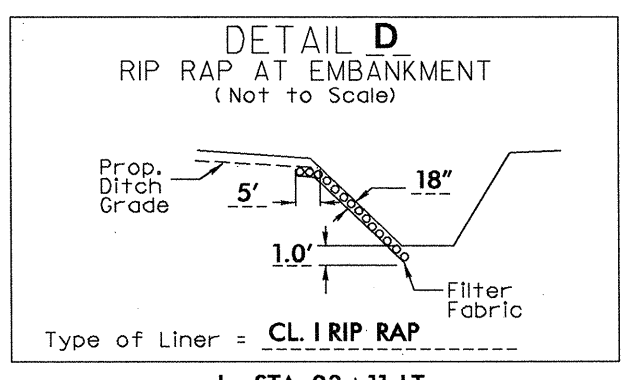
**NOTE: BIDDERS ARE STRONGLY ENCOURAGED TO REVIEW THE 2006 EDITION OF THE NCDOT STANDARD SPECIFICATIONS CONCERNING DESCRIPTIONS FOR MEASUREMENT AND PAYMENT OF UTILITY PAY ITEMS.**



**PROP. - 8 - 1/4" WATER METER, 8 - 1/4" CORP. STOP**  
228 L.F. 1/4" TYPE K COPPER WATER PIPE  
CONNECT USING NECESSARY FITTINGS

**DETAIL B**  
SWALE  
(Not to Scale)

**PROP. - 3 - BREAK DOWN & FILL**  
ABANDONED SEPTIC TANKS  
11 - SANITARY SEWER CLEANOUTS  
540 L.F. OF 4" PVC SEWER PIPE, SDR 35



**-L-**  
PI Sta 23+70.90  
 $\Delta = 10^\circ 40' 43.0''$  (LT)  
D = 2' 15" 01.5"  
L = 474.52'  
T = 237.95'  
R = 2,546.00'  
SE = 0.02  
RO = 74'

**-YI-**  
PI Sta 13+62.74  
 $\Delta = 10^\circ 38' 48.9''$  (RT)  
D = 5' 17" 43.3"  
L = 201.06'  
T = 100.82'  
R = 1,082.00'  
SE = SEE PLANS

**NOTE: CONTRACTOR SHALL BE RESPONSIBLE FOR ENSURING THAT EXISTING SEPTIC SYSTEMS REMAIN FUNCTIONAL UNTIL CONNECTIONS ARE MADE TO THE PROPOSED SEWER SYSTEM. IF ANY EXISTING SEPTIC SYSTEMS ARE DAMAGED DURING CONSTRUCTION, PRIOR TO THE PROPOSED SEWER SYSTEM BEING READY FOR SERVICE, CONTRACTOR SHALL TAKE APPROPRIATE MEASURES TO KEEP THESE SYSTEMS FUNCTIONAL ON AN INTERIM BASIS. THESE INTERIM MEASURES SHALL BE APPROVED BY THE ENGINEER. NO ADDITIONAL PAYMENT WILL BE MADE FOR THESE INTERIM MEASURES.**

**PROP. - 7 L.F. OF 6" DI WATER PIPE, PC 350**  
1 - FIRE HYDRANT  
1 - 6" GATE VALVE & VALVE BOX, 200 PSI WP  
1 - 12" x 6" DI TEE  
1 - 12" GATE VALVE AND VALVE BOX, 200 PSI WP  
CONNECT USING NECESSARY FITTINGS

**PROP. MANHOLE "9"**  
STA. 17+61.76, LINE PS200  
-L- STA. 17+61.76, 73.27 FT. LT.

**PROP. - 7 L.F. OF 6" DI WATER PIPE, PC 350**  
1 - FIRE HYDRANT  
1 - 6" GATE VALVE AND VALVE BOX, 200 PSI WP  
1 - 12" x 6" DI TEE  
CONNECT USING NECESSARY FITTINGS

**PROP. - 1,410 L.F. OF 12 INCH DI WATER PIPE, PC 350**  
4 - 12" 45° DI BENDS  
CONNECT USING NECESSARY FITTINGS

**PROP. - 178.74 L.F. OF 8 INCH DI SEWER PIPE, PC 350**

**PROP. MANHOLE "2"**  
STA. 2+61.47, LINE PS100  
-L- STA. 24+28.99, 40.06 FT. LT.

**PROP. MANHOLE "1" (OUTSIDE DROP)**  
STA. 0+82.73, LINE PS100  
-L- STA. 22+47.39, 39.12 FT. LT.

**PROP. - 7 L.F. OF 6" DI WATER PIPE, PC 350**  
1 - FIRE HYDRANT  
1 - 6" GATE VALVE AND VALVE BOX, 200 PSI WP  
1 - 12" x 6" DI TEE  
CONNECT USING NECESSARY FITTINGS

**PROP. - 115.76 L.F. OF 8 INCH DI SEWER PIPE, PC 350**  
-YI- POT Sta. 15+35.25  
-BL-2 PINC 17+77.72  
-L- STA. 18+03.98 (15.52 RT)  
@ EXIST. RW  
70.00'

**EXISTING MANHOLE**  
STA. 0+00, LINE PS200

**PROP. - 2 - BREAK DOWN & REBUILD EX. MH**  
(1ST - ADJUST TOP TO DETOUR GRADE,  
2ND - ADJUST TOP TO FINAL GRADE)

**EXISTING MANHOLE**  
STA. 0+00, LINE PS100

**EX. 8" DI SAN. SEWER INSTALLED BY CITY OF GREENSBORO**

**PROP. - 82.73 L.F. OF 8 INCH DI SEWER PIPE, PC 350**

**PROP. - 87.05 L.F. OF 8 INCH DI SEWER PIPE, PC 350**

**PROP. - 200.00 L.F. OF 8 INCH DI SEWER PIPE, PC 350**

**PROP. MANHOLE "4"**  
STA. 6+05.60, LINE PS100  
-L- STA. 27+00.00, 40.17 FT. RT.

**PROP. - 257.08 L.F. OF 8 INCH DI SEWER PIPE, PC 350**

**PROP. MANHOLE "3"**  
STA. 3+48.52, LINE PS100  
-L- STA. 24+45.69, 45.37 FT. RT.

**END CONSTRUCTION**  
-DET - POT Sta. 20+62.07 =  
-L- POT Sta. 28+71.52

**UTILITY CONSTRUCTION**

**NOTE:**  
CONTRACTOR SHALL BE RESPONSIBLE FOR ENSURING THAT EXISTING SEPTIC SYSTEMS REMAIN FUNCTIONAL UNTIL CONNECTIONS ARE MADE TO THE PROPOSED SEWER SYSTEM. IF ANY EXISTING SEPTIC SYSTEMS ARE DAMAGED DURING CONSTRUCTION, PRIOR TO THE PROPOSED SEWER SYSTEM BEING READY FOR SERVICE, CONTRACTOR SHALL TAKE APPROPRIATE MEASURES TO KEEP THESE SYSTEMS FUNCTIONAL ON AN INTERIM BASIS. THESE INTERIM MEASURES SHALL BE APPROVED BY THE ENGINEER. NO ADDITIONAL PAYMENT WILL BE MADE FOR THESE INTERIM MEASURES.

-L-  
 PI Sta 31+33.32  
 $\Delta = 21^{\circ} 29' 46.9''$  (RT)  
 $D = 457' 38.4''$   
 $L = 433.34'$   
 $T = 219.25'$   
 $R = 1,155.00'$   
 $SE = 0.03$   
 $RO = \text{SEE PLANS}$

PI Sta 39+20.74  
 $\Delta = 28^{\circ} 45' 07.3''$  (LT)  
 $D = 458' 09.4''$   
 $L = 578.60'$   
 $T = 295.53'$   
 $R = 1,153.00'$   
 $SE = 0.03$   
 $RO = \text{SEE PLANS}$

-Y2-  
 PI Sta 10+80.12  
 $\Delta = 3^{\circ} 10' 34.0''$  (LT)  
 $D = 158' 57.2''$   
 $L = 160.20'$   
 $T = 80.12'$   
 $R = 2,890.00'$   
 $SE = \text{EXIST.}$

**NOTE:**  
BIDDERS ARE STRONGLY ENCOURAGED TO REVIEW THE 2006 EDITION OF THE NCDOT STANDARD SPECIFICATIONS CONCERNING DESCRIPTIONS FOR MEASUREMENT AND PAYMENT OF UTILITY PAY ITEMS.

**PROP. - 7 - 3/4" WATER METER, 7 - 3/4" CORP. STOP**  
 330 L.F. 3/4" TYPE K COPPER WATER PIPE  
 CONNECT USING NECESSARY FITTINGS

**PROP. - 7 L.F. OF 6" DI WATER PIPE, PC 350**  
 1 - FIRE HYDRANT  
 1 - 6" GATE VALVE AND VALVE BOX, 200 PSI WP  
 1 - 12" x 6" DI TEE  
 CONNECT USING NECESSARY FITTINGS

**PROP. - 90 L.F. OF 8" DI WATER PIPE, PC 350**  
 1 - 12" x 8" DI TEE  
 1 - 8" GATE VALVE AND VALVE BOX, 200 PSI WP  
 1 - 8" DI PLUG  
 CONNECT USING NECESSARY FITTINGS

**PROP. - 3 - BREAK DOWN & FILL ABANDONED SEPTIC TANKS**  
 7 - SANITARY SEWER CLEANOUTS  
 420 L.F. OF 4" PVC SEWER PIPE, SDR 35

**PROP. - 7 L.F. OF 6" DI WATER PIPE, PC 350**  
 1 - FIRE HYDRANT  
 1 - 6" GATE VALVE AND VALVE BOX, 200 PSI WP  
 1 - 12" x 6" DI TEE  
 1 - 12" GATE VALVE AND VALVE BOX, 200 PSI WP  
 CONNECT USING NECESSARY FITTINGS

**PROP. - 1,062 L.F. OF 12 INCH DI WATER PIPE, PC 350**  
 CONNECT USING NECESSARY FITTINGS

**PROP. - 1 - RELOCATE FIRE HYDRANT**  
 7 L.F. OF 6" DI WATER PIPE, PC 350  
 1 - 6" GATE VALVE AND VALVE BOX, 200 PSI WP  
 1 - 12" x 6" DI TEE  
 CONNECT USING NECESSARY FITTINGS

**PROP. - 30 L.F. OF 12" DI WATER PIPE, PC 350**  
 2 - 12" 22.5" DI BENDS  
 CONNECT USING NECESSARY FITTINGS

**PROP. - 194.96 L.F. OF 8 INCH DI SEWER PIPE, PC 350**

**PROP. - 147.63 L.F. OF 8 INCH DI SEWER PIPE, PC 350**

**PROP. - 105.39 L.F. OF 8 INCH DI SEWER PIPE, PC 350**

**PROP. - 327.20 L.F. OF 8 INCH DI SEWER PIPE, PC 350**

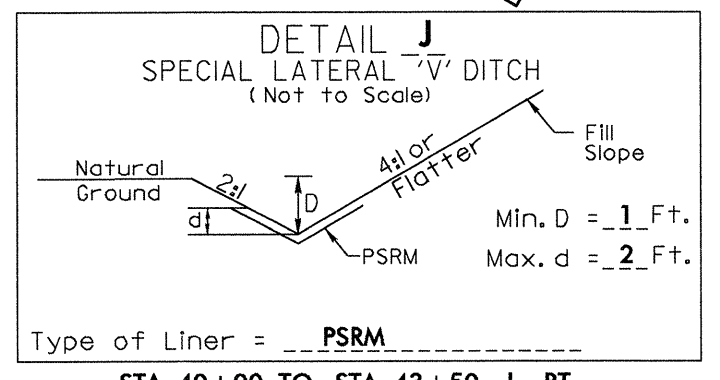
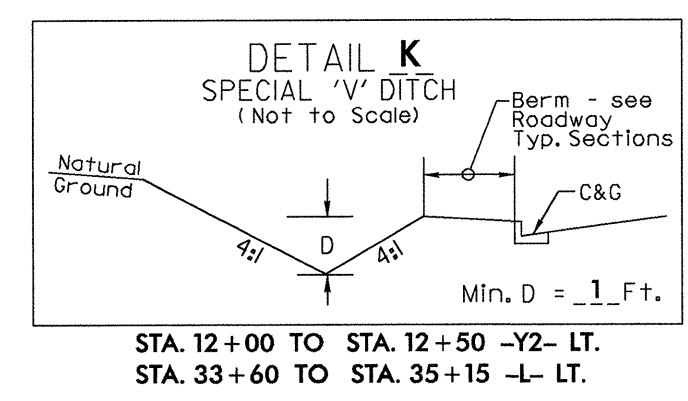
**PROP. MANHOLE "8"**  
 STA. 15+07.69, LINE PS100  
 -L- STA. 36+17.74,  
 40.97 FT. RT.

**PROP. MANHOLE "5"**  
 STA. 8+37.90, LINE PS100  
 -L- STA. 29+32.96,  
 40.37 FT. RT.

**PROP. MANHOLE "6"**  
 STA. 10+32.86, LINE PS100  
 -L- STA. 31+35.26,  
 40.58 FT. RT.

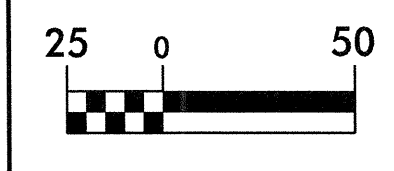
**PROP. MANHOLE "7"**  
 STA. 11+80.49, LINE PS100 =  
 STA. 0+00, LINE PS300  
 -L- STA. 32+88.41,  
 41.19 FT. RT.

**PROP. - 32.30 L.F. OF 8 INCH DI SEWER PIPE, PC 350**



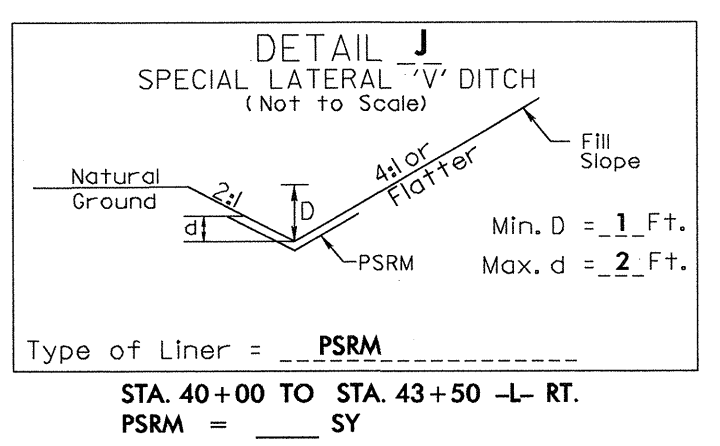
PAVEMENT REMOVAL

Type of Liner = PSRM  
 STA. 40+00 TO STA. 43+50 -L- RT.  
 PSRM = 73 SY



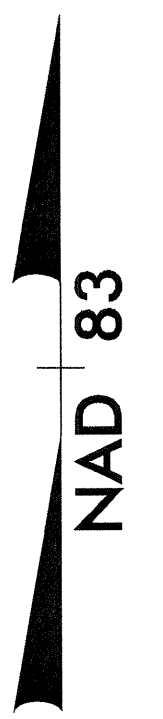
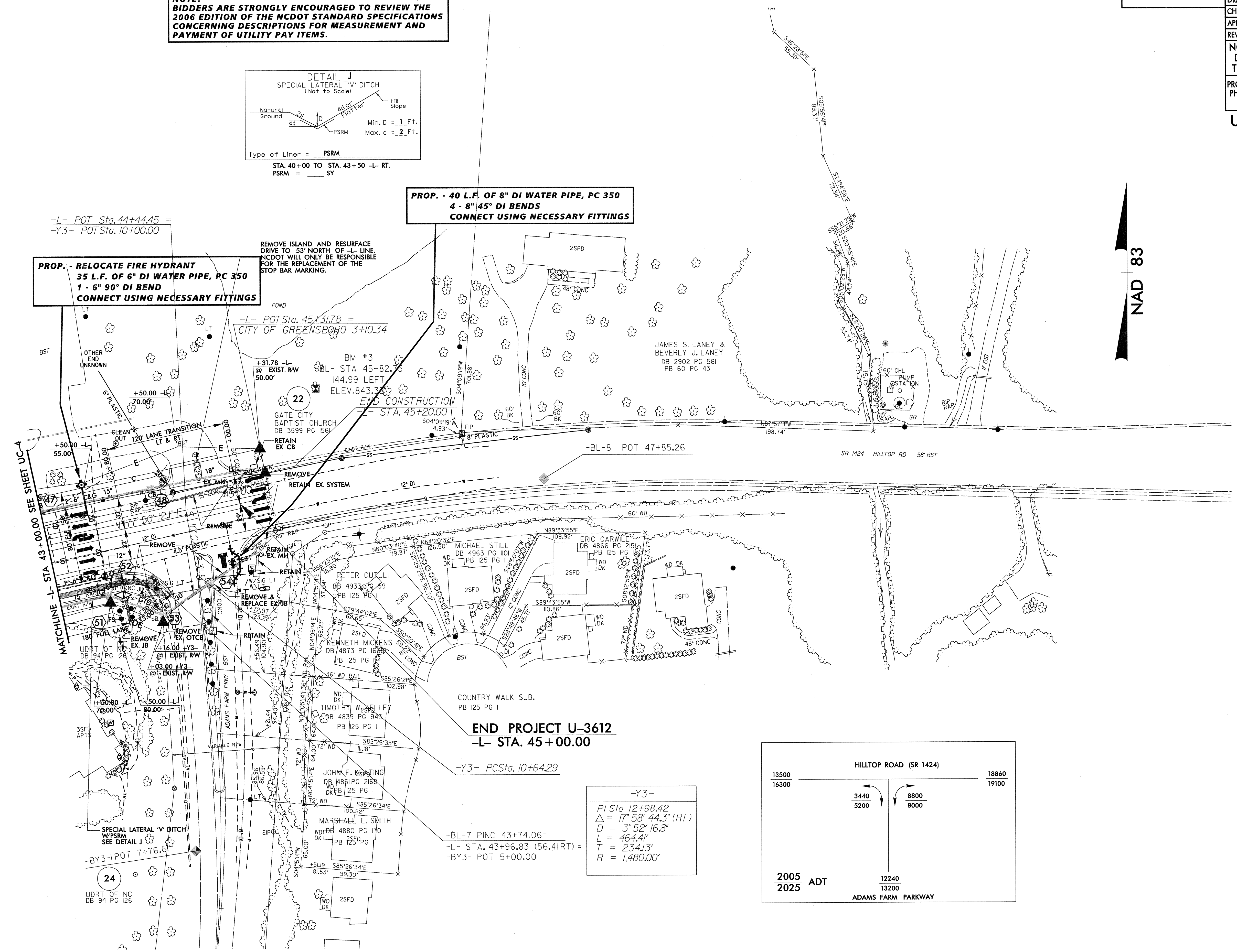
PROJECT REFERENCE NO.	SHEET NO.
U-3612	UC-5
DESIGNED BY: DMP	
DRAWN BY: DMP	
CHECKED BY: DMP	
APPROVED BY:	
REVISED:	
NORTH CAROLINA DEPARTMENT OF TRANSPORTATION	
PROJECT SERVICES UNIT PHONE: (919) 250-4128 FAX: (919) 250-4119	
UTILITY CONSTRUCTION PLANS ONLY	

**NOTE:**  
**BIDDERS ARE STRONGLY ENCOURAGED TO REVIEW THE 2006 EDITION OF THE NCDOT STANDARD SPECIFICATIONS CONCERNING DESCRIPTIONS FOR MEASUREMENT AND PAYMENT OF UTILITY PAY ITEMS.**



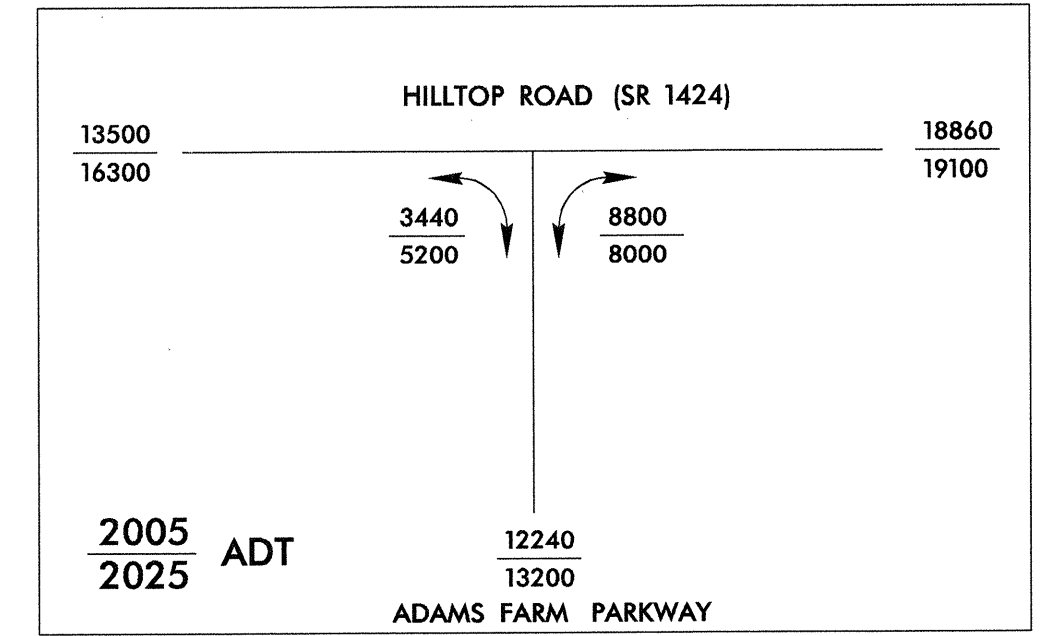
**PROP. - RELOCATE FIRE HYDRANT**  
**35 L.F. OF 6" DI WATER PIPE, PC 350**  
**1 - 6" 90° DI BEND**  
**CONNECT USING NECESSARY FITTINGS**

**PROP. - 40 L.F. OF 8" DI WATER PIPE, PC 350**  
**4 - 8" 45° DI BENDS**  
**CONNECT USING NECESSARY FITTINGS**



**END PROJECT U-3612**  
**-L- STA. 45+00.00**

**-Y3-**  
 PI Sta 12+98.42  
 $\Delta = 17^\circ 58' 44.3" (RT)$   
 $D = 3^\circ 52' 16.8"$   
 $L = 464.41'$   
 $T = 234.13'$   
 $R = 1,480.00'$

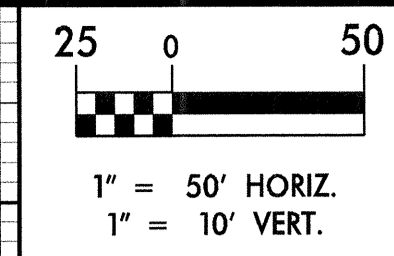


5/28/99

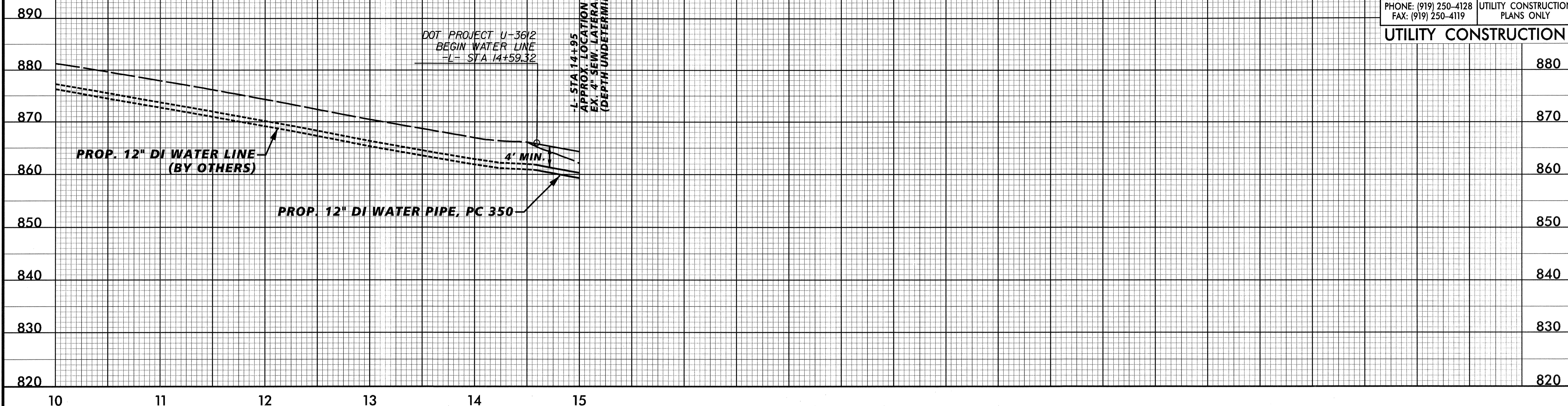
## STATIONING FOLLOWS -L- (HILLTOP ROAD)

EX. & PROP. ELEVATIONS SHOWN IN THIS PROFILE ARE OVER CENTER OF PROP. WATER LINE

BM #1  
N 834214 E 1728088  
-BL- STATION 6+10 320' RT  
EL= 891.16'  
R/R SPIKE SET IN 17" OAK



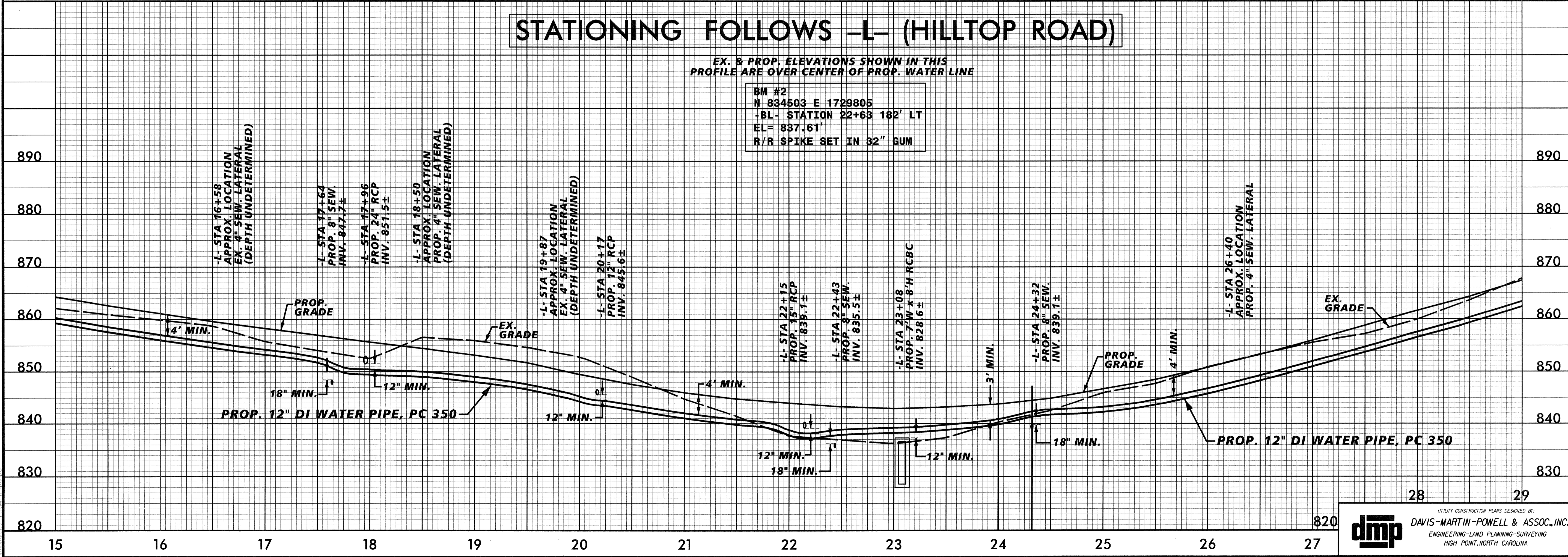
PROJECT REFERENCE NO. U-3612	SHEET NO. UC-6
DESIGNED BY: DMP	
DRAWN BY: DMP	
CHECKED BY: DMP	
APPROVED BY:	
REVISED:	
NORTH CAROLINA DEPARTMENT OF TRANSPORTATION	
PROJECT SERVICES UNIT PHONE: (919) 250-4128 FAX: (919) 250-4119	
<b>UTILITY CONSTRUCTION</b>	



## STATIONING FOLLOWS -L- (HILLTOP ROAD)

EX. & PROP. ELEVATIONS SHOWN IN THIS PROFILE ARE OVER CENTER OF PROP. WATER LINE

BM #2  
N 834503 E 1729805  
-BL- STATION 22+63 182' LT  
EL= 837.61'  
R/R SPIKE SET IN 32" GUM

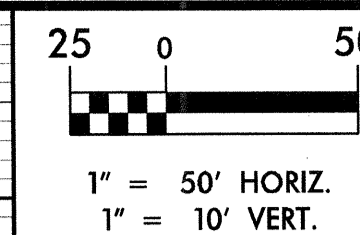


5/26/99  
STATIONING  
SYMBOLS  
CONNECTION  
STANDARD

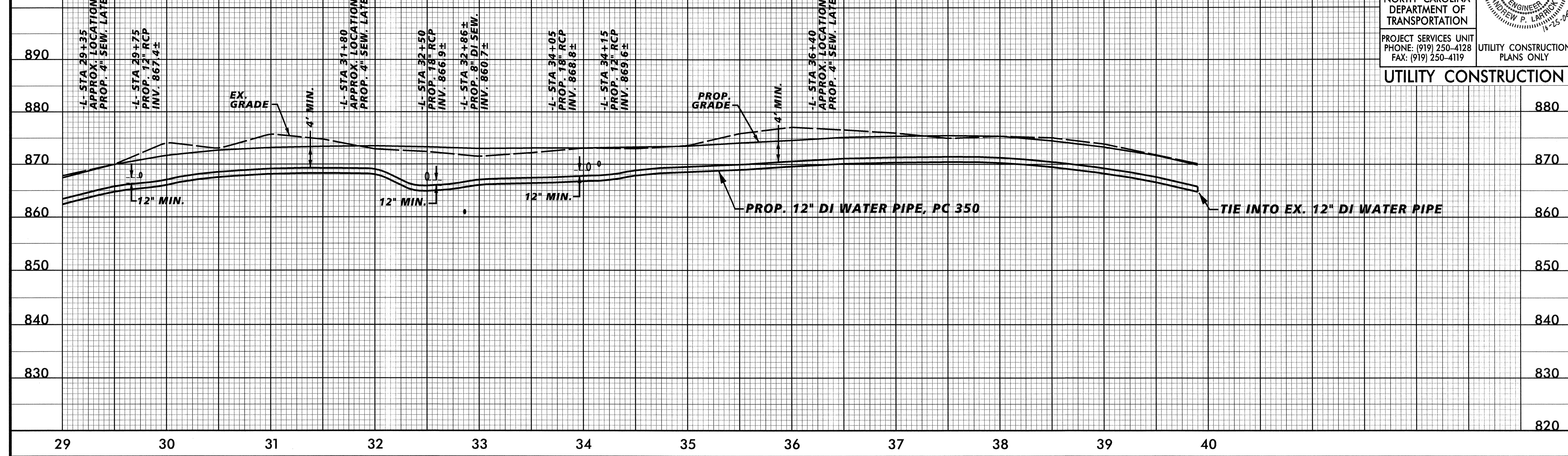
# STATIONING FOLLOWS -L- (HILLTOP ROAD)

EX. & PROP. ELEVATIONS SHOWN IN THIS PROFILE ARE OVER CENTER OF PROP. WATER LINE

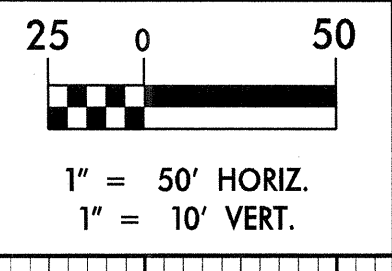
BM #3  
N 834401 E 1732048  
-BL- STATION 45+83 145' LT  
EL= 843.33'  
R/R SPIKE SET IN 27" OAK



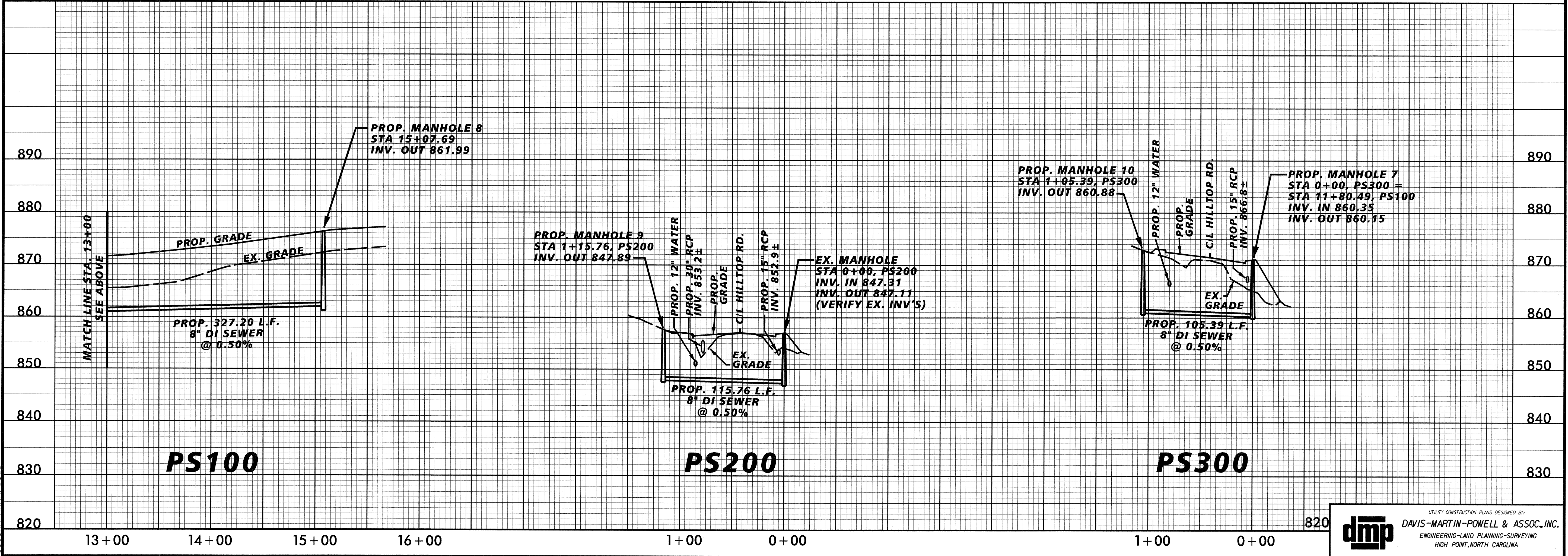
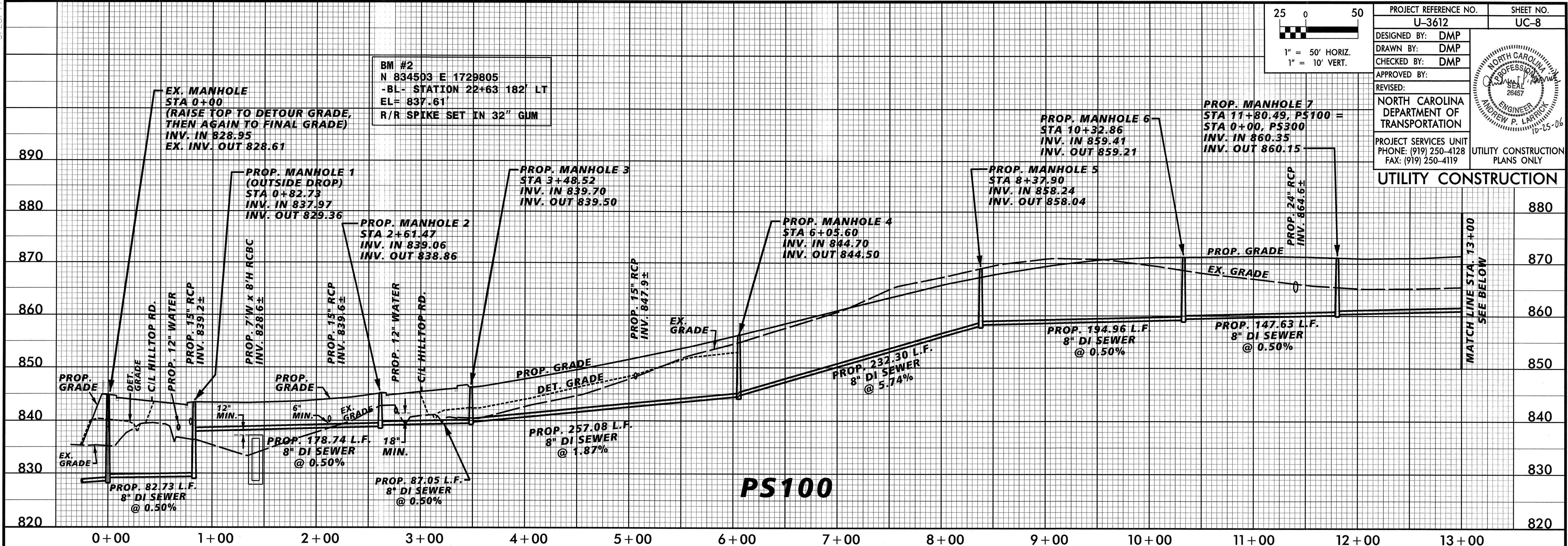
PROJECT REFERENCE NO. U-3612	SHEET NO. UC-7
DESIGNED BY: DMP	
DRAWN BY: DMP	
CHECKED BY: DMP	
APPROVED BY:	
REVISED:	
NORTH CAROLINA DEPARTMENT OF TRANSPORTATION	
PROJECT SERVICES UNIT PHONE: (919) 250-4128 FAX: (919) 250-4119	
UTILITY CONSTRUCTION PLANS ONLY	



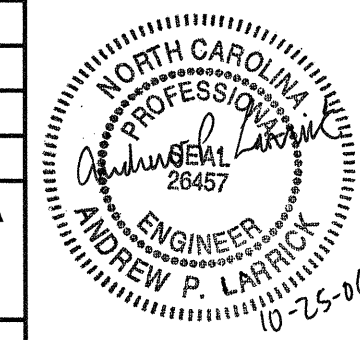
5/28/99



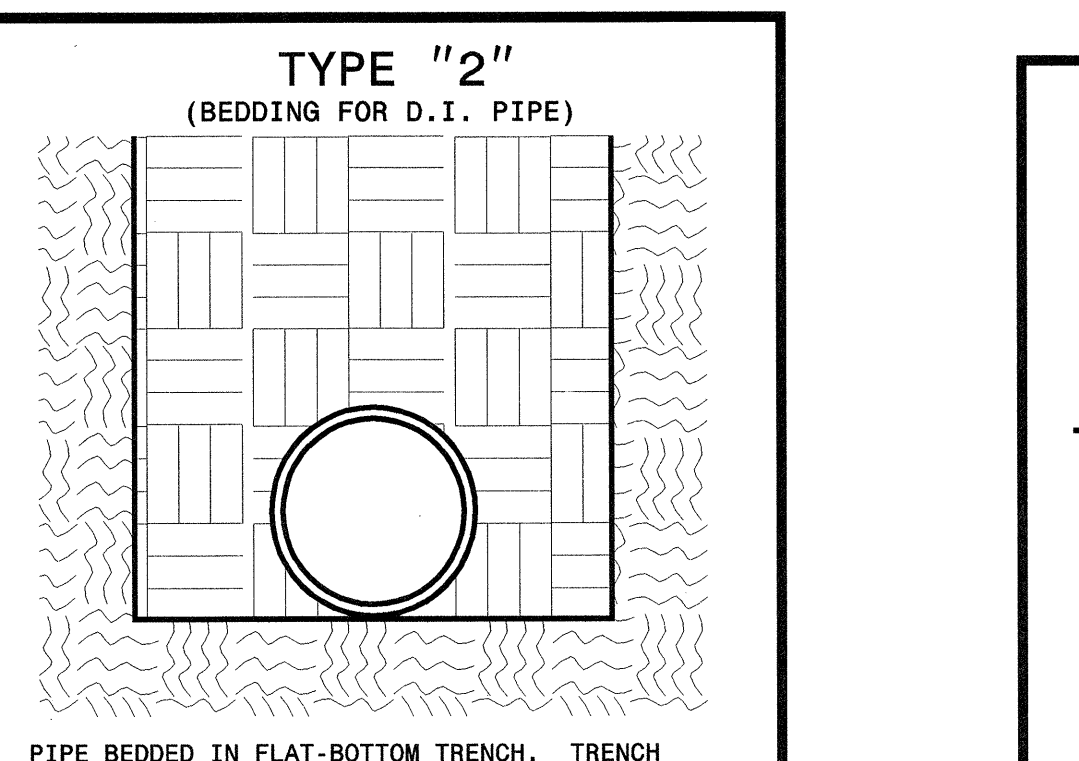
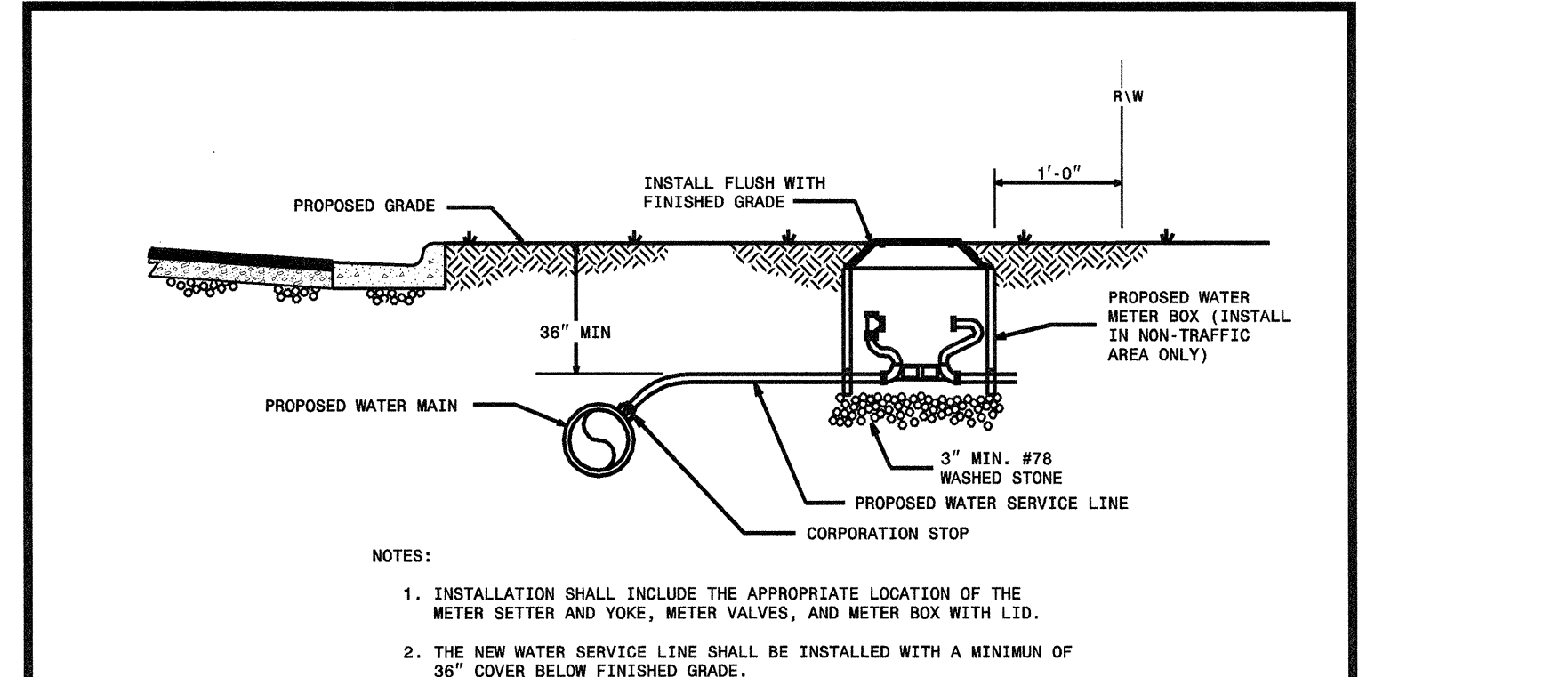
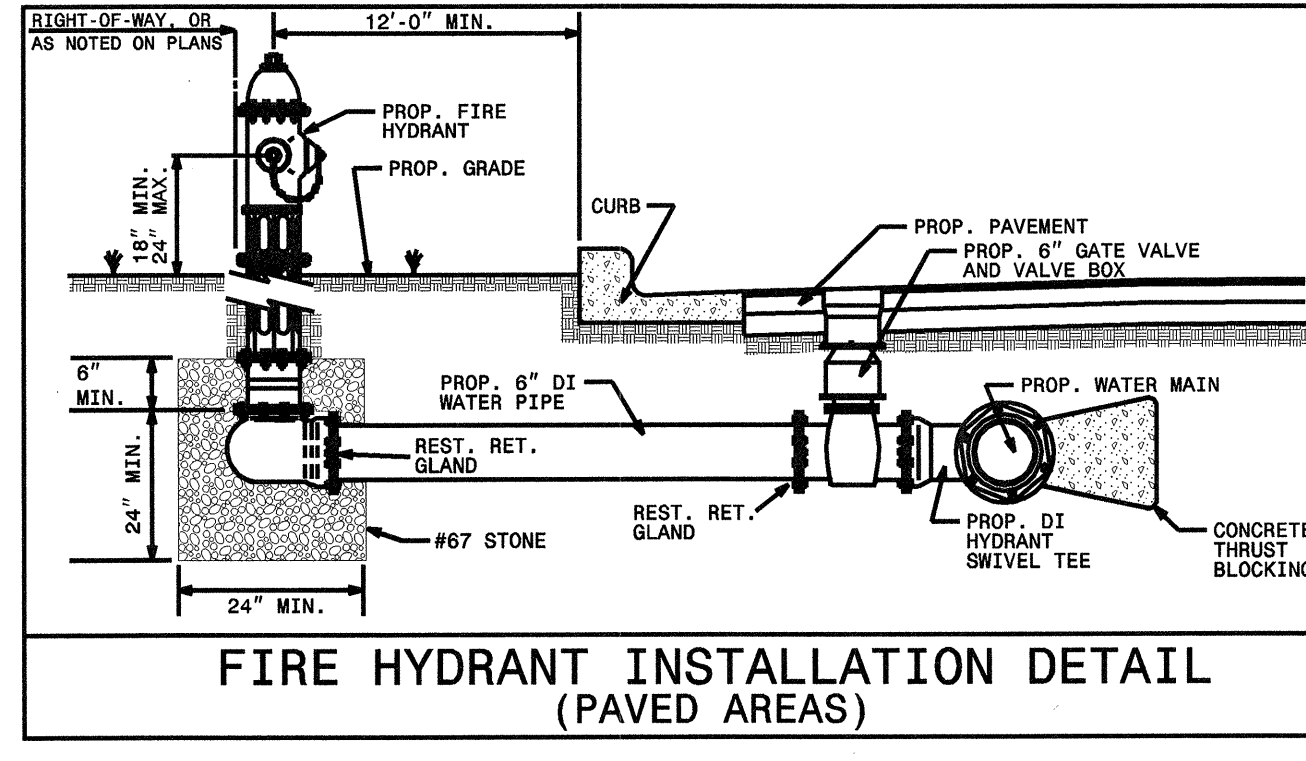
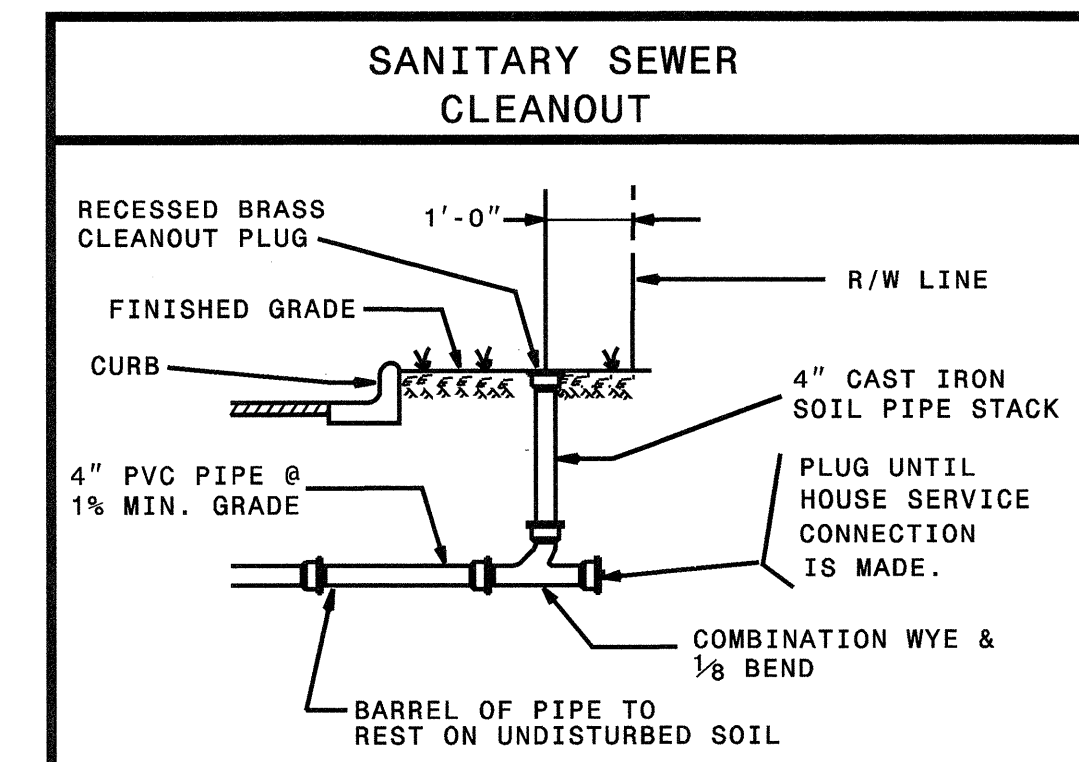
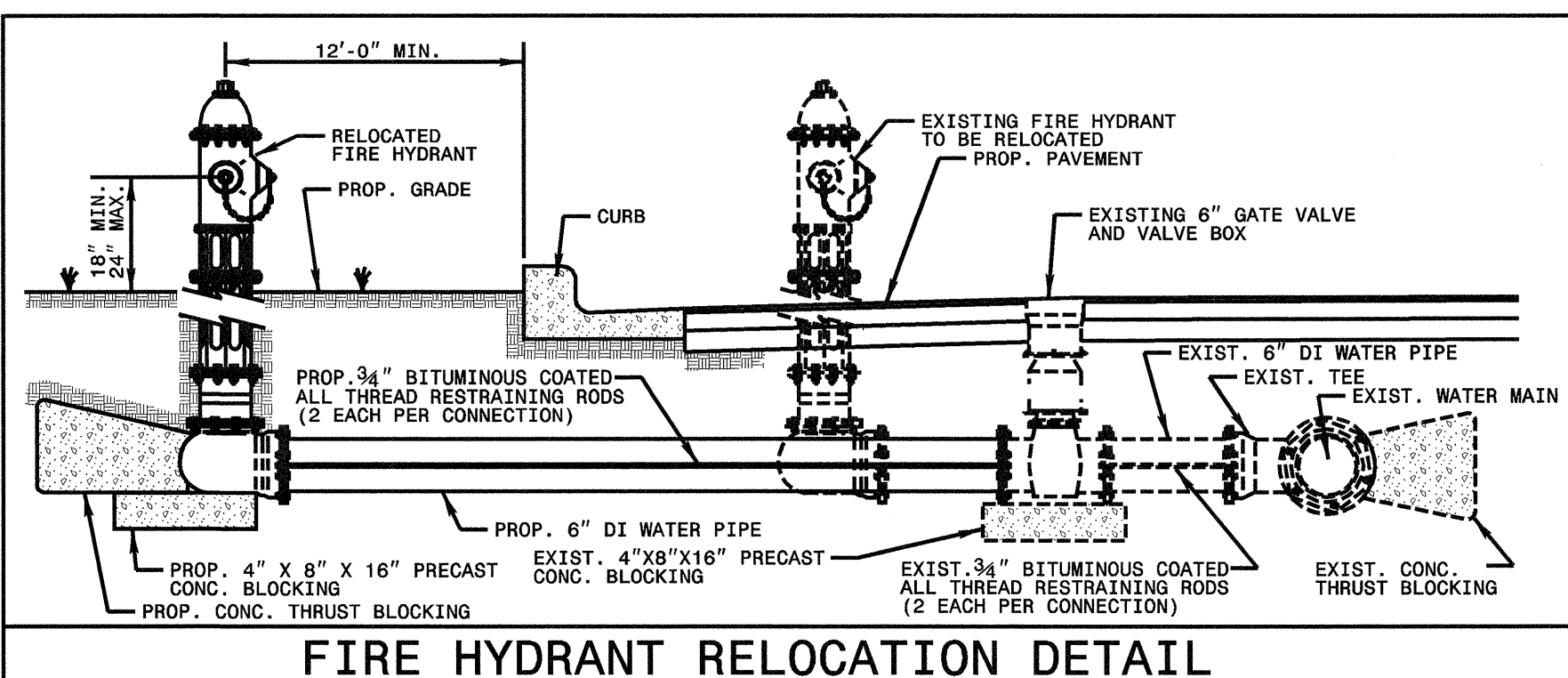
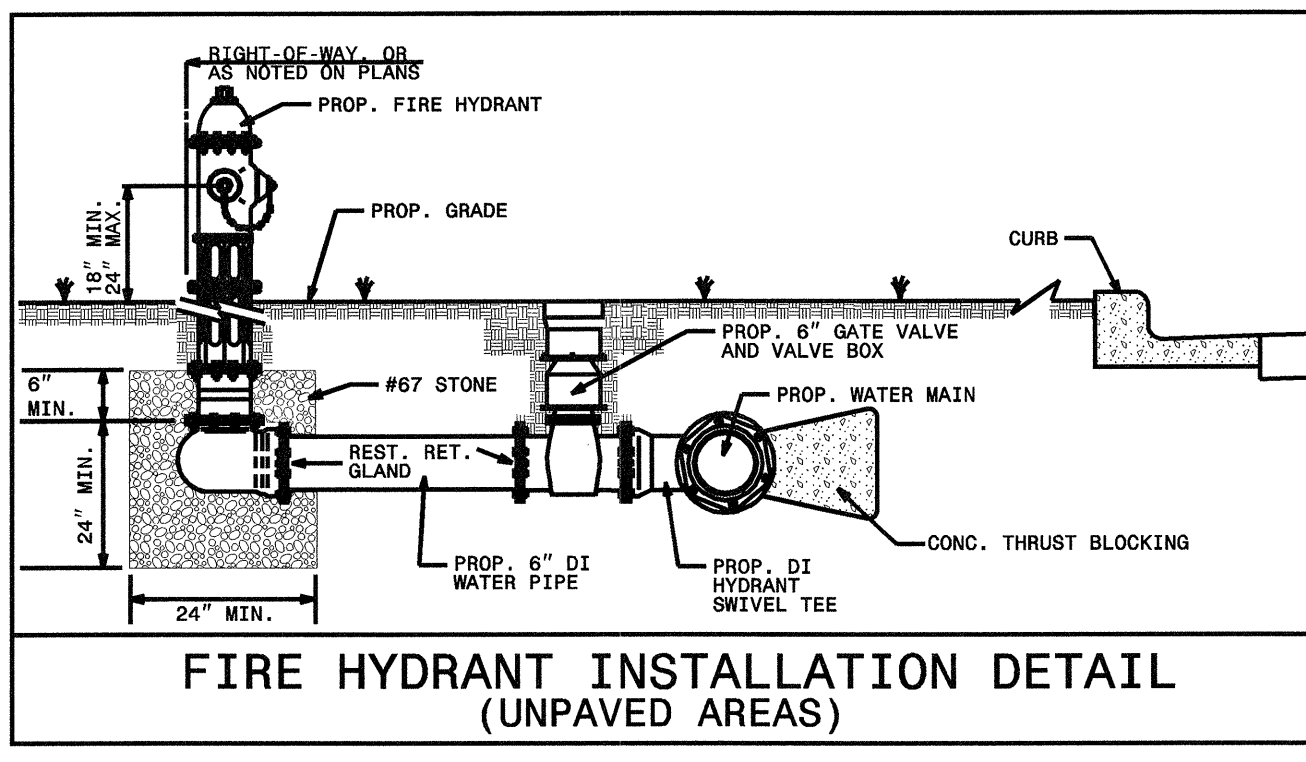
PROJECT REFERENCE NO. U-3612	SHEET NO. UC-8
DESIGNED BY: DMP	
DRAWN BY: DMP	
CHECKED BY: DMP	
APPROVED BY:	
REVISED:	
NORTH CAROLINA DEPARTMENT OF TRANSPORTATION PROJECT SERVICES UNIT PHONE: (919) 250-4128 FAX: (919) 250-4119	
UTILITY CONSTRUCTION PLANS ONLY	







THE CONTRACTOR SHALL REPLACE ANY DAMAGED SEWER LATERALS AND/OR CLEANOUTS AS DIRECTED BY THE ENGINEER. THE NECESSARY QUANTITIES HAVE BEEN ADDED TO THE CONTRACT TO FACILITATE THIS PROCEDURE.



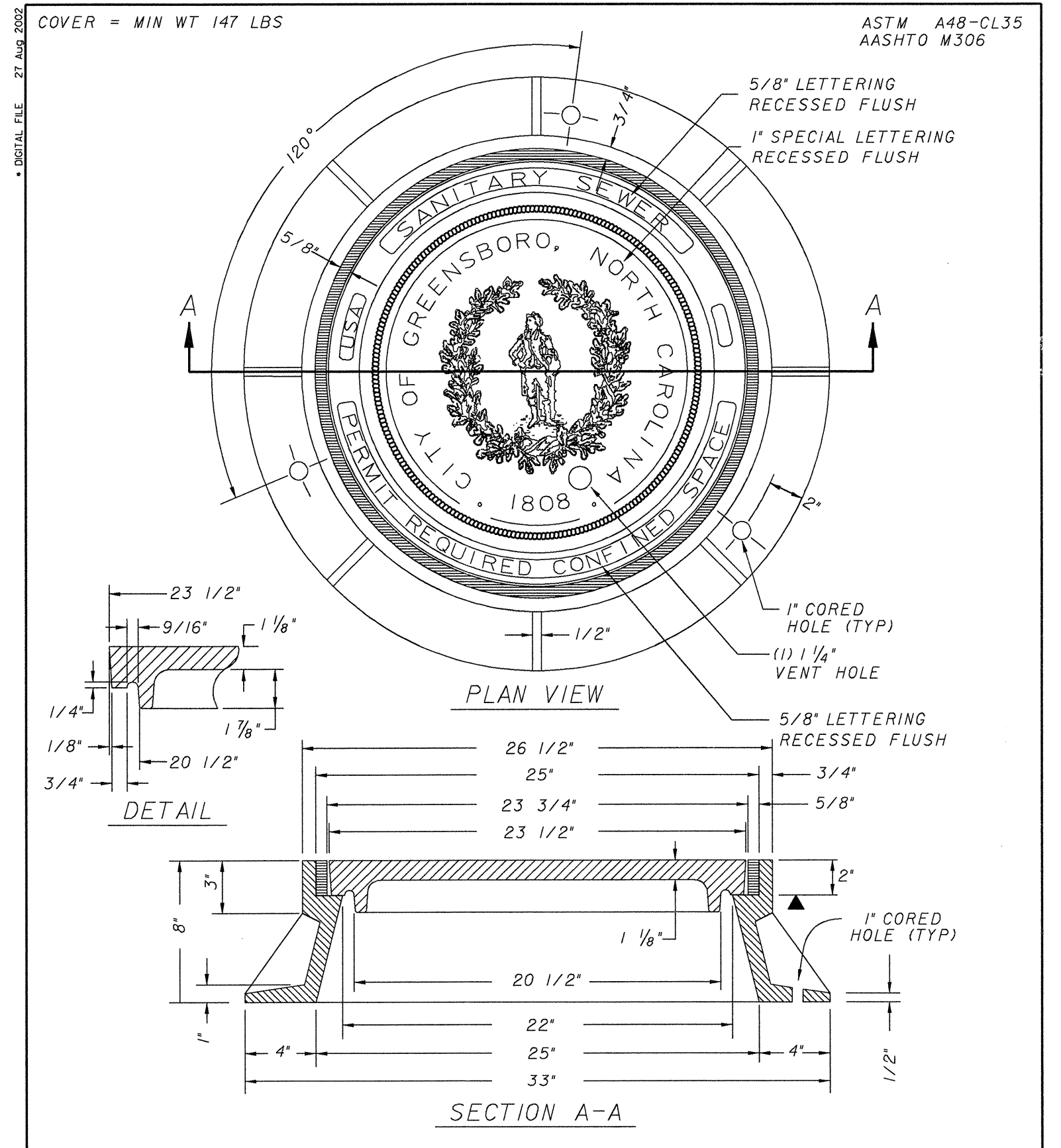
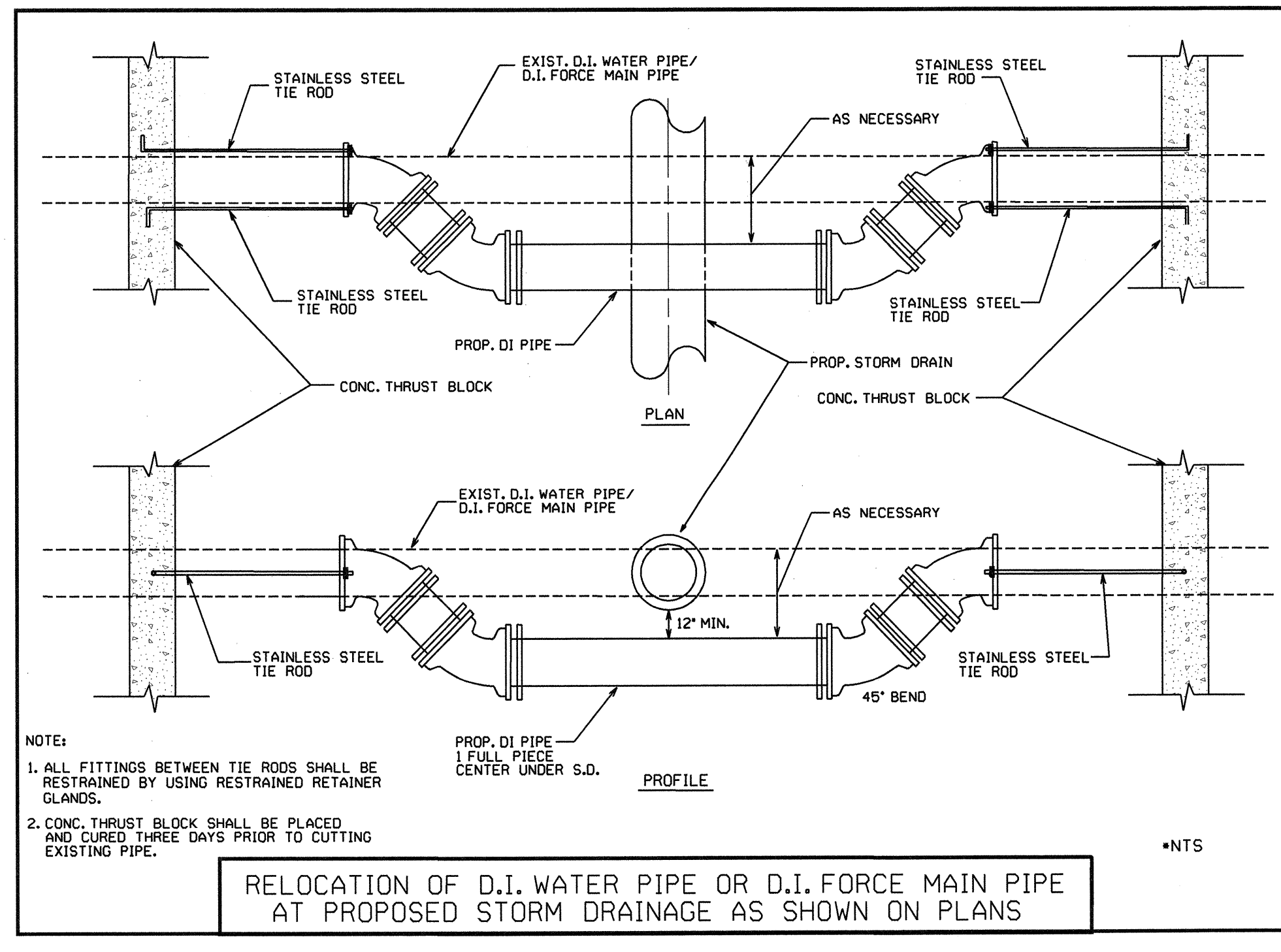
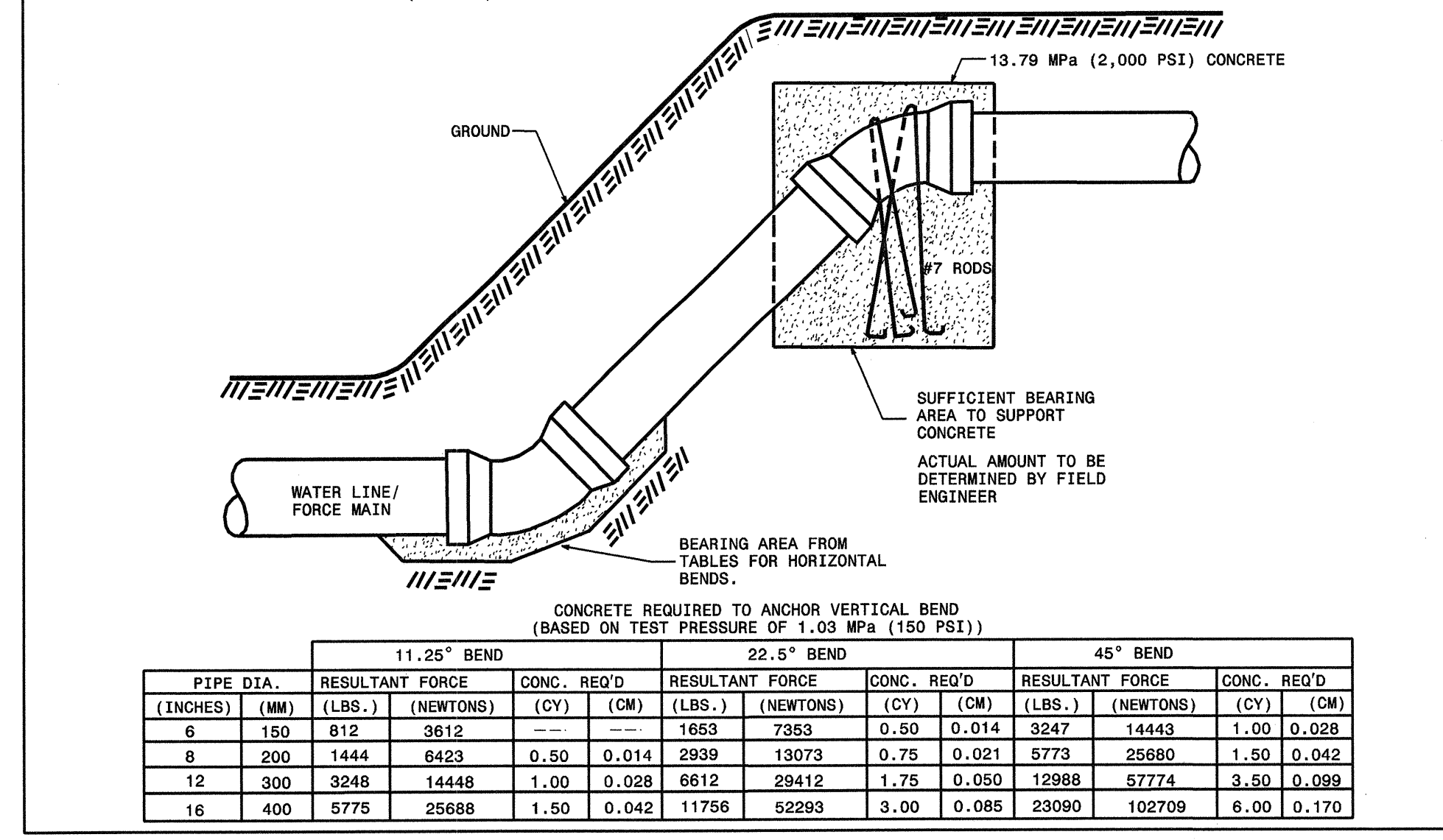
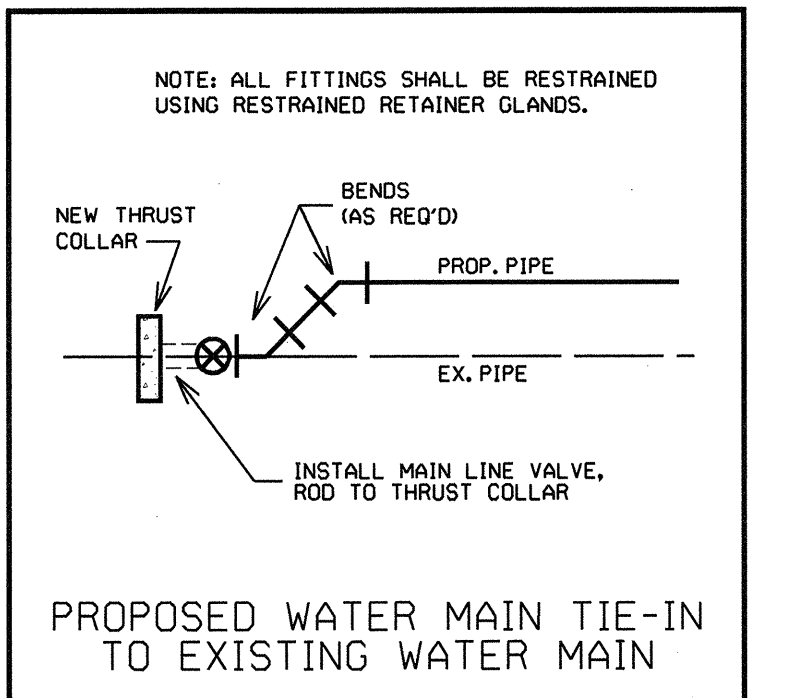
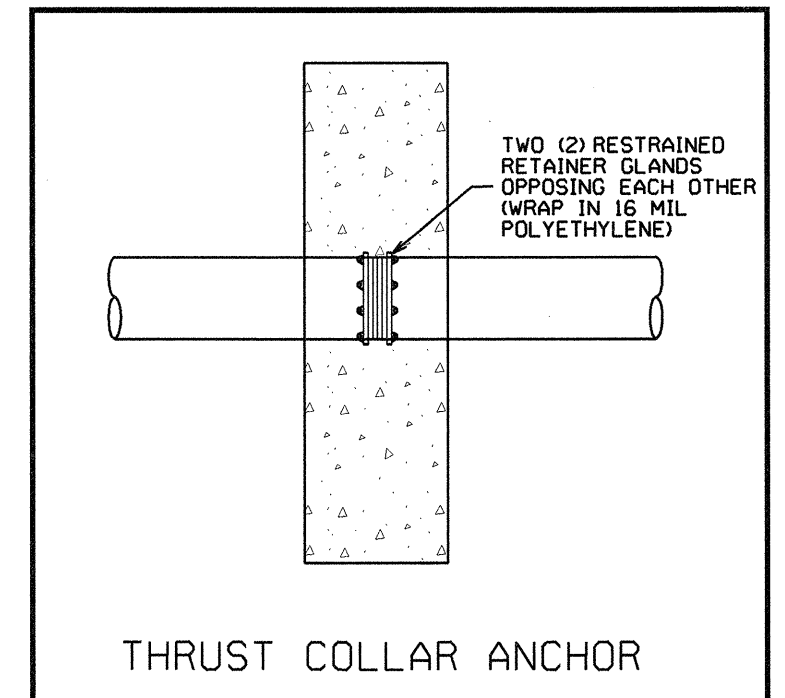
MAXIMUM TRENCH WIDTH AT TOP OF PIPE

NOMINAL PIPE SIZE (INCHES)	TRENCH WIDTH (INCHES)	NOMINAL PIPE SIZE (INCHES)	TRENCH WIDTH (INCHES)
4	28	20	44
6	30	24	48
8	32	30	54
10	34	36	60
12	36	42	66
14	38	48	72
16	40	54	78
18	42		

REQUIRED BEARING AREAS

SIZE (MM)	DEGREE OF BEND (INCHES)	STATIC THRUST* (NEWTONS)	FAIRLY DRY CLAY (0.192 Mpa)		SOFT CLAY (0.096 Mpa)		GRAVEL, COARSE SAND (0.796 Mpa)		ALWAYS DRY CLAY (0.385 Mpa)		SAND, COMPACT, FIRM (0.385 Mpa)		SAND, CLEAN, DRY (0.192 Mpa)		QUICKSAND, VERY POOR SOIL (0.048 Mpa)		ROCK, POOR (0.479 Mpa)		
			(LBS)	(SM)	(SF)	(SM)	(SF)	(SM)	(SF)	(SM)	(SF)	(SM)	(SF)	(SM)	(SF)	(SM)	(SF)	(SM)	(SF)
150	6	11.25	3612	812	0.09	1	0.09	1	0.09	1	0.09	1	0.09	1	0.09	1	0.09	1	
		22.5	7353	1653	0.09	1	0.09	1	0.09	1	0.09	1	0.09	1	0.09	1	0.09	1	
		45	14443	3247	0.09	1	0.19	2	0.09	1	0.09	1	0.09	1	0.09	1	0.09	1	
		90	28883	5994	0.19	2	0.28	3	0.09	1	0.09	1	0.19	2	0.56	6	0.09	1	
			PLUG	18856	4239	0.09	1	0.19	2	0.09	1	0.19	1	0.09	1	0.37	4	0.09	1
200	8	11.25	6423	1444	0.09	1	0.09	1	0.09	1	0.09	1	0.09	1	0.19	2	0.09	1	
		22.5	13073	2939	0.09	1	0.19	1	0.09	1	0.09	1	0.09	1	0.28	3	0.09	1	
		45	26143	5877	0.19	2	0.28	3	0.09	1	0.09	1	0.19	2	0.56	6	0.09	1	
		90	52283	11756	0.28	3	0.56	6	0.09	1	0.19	2	0.28	3	1.02	11	0.19	2	
			PLUG	33522	7536	0.19	2	0.37	4	0.09	1	0.19	1	0.19	2	0.74	8	0.09	1
300	12	11.25	14448	3248	0.09	1	0.19	2	0.09	1	0.09	1	0.09	1	0.28	3	0.09	1	
		22.5	28893	6496	0.19	2	0.37	4	0.09	1	0.09	1	0.19	2	0.56	6	0.09	1	
		45	57783	12996	0.28	3	0.56	6	0.09	1	0.19	2	0.28	3	1.21	13	0.19	2	
		90	115563	25996	0.56	6	1.11	12	0.19	2	0.28	3	0.56	6	2.23	24	0.28	3	
			PLUG	75424	16996	0.37	4	0.84	9	0.09	1	0.19	2	0.37	4	1.58	17	0.19	2
400	16	11.25	25688	5775	0.19	2	0.28	3	0.09	1	0.09	1	0.19	2	0.56	6	0.09	1	
		22.5	52293	11756	0.28	3	0.56	6	0.09	1	0.19	2	0.28	3	1.11	12	0.09	1	
		45	104583	23512	0.56	6	1.11	12	0.19	2	0.28	3	0.56	6	2.24	23	0.28	3	
		90	209163	47024	1.02	11	2.04	22	0.28	3	0.56	6	1.02	11	3.98	43	0.37	4	
			PLUG	134087	30144	0.74	8	1.39	15	0.19	2	0.37	4	0.37	4	2.79	30	0.28	3

\*BASED ON TEST PRESSURE OF 1.03 MPa (150 PSI)



NOTE: ALL DIMENSIONS AND TOLERANCES ARE TO BE CONCENTRIC AND WILL SUPERSEDE ANY ASTM STANDARDS WITH A MAXIMUM VARIATION OF +/- 1/16" ON ALL DIMENSIONS.

MH-52G/EC USF 7150E

**CITY OF GREENSBORO**

STANDARD ADJUSTABLE MANHOLE RING AND COVER FOR PAVED AREAS

STD. NO. 205-A REV. 05-88 03-01 01-97 08-02 03-98

UTILITY CONSTRUCTION PLANS DESIGNED BY: **dmp** DAVIS-MARTIN-POWELL & ASSOC., INC. ENGINEERING-LAND PLANNING-SURVEYING HIGH POINT, NORTH CAROLINA

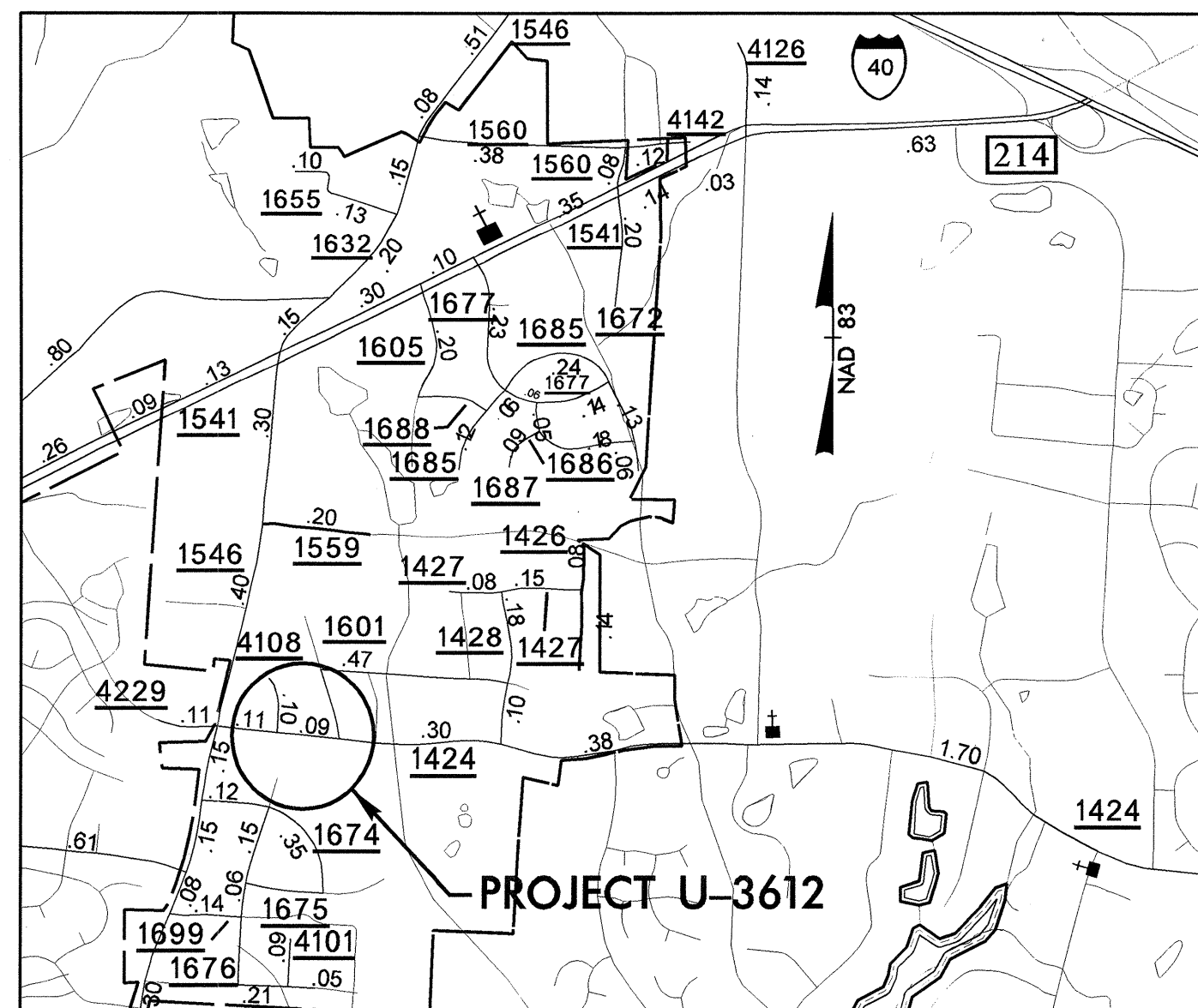
STATE OF NORTH CAROLINA  
DIVISION OF HIGHWAYS

T.I.P. NO.	SHEET NO.
<b>U-3612</b>	<b>UO-1</b>

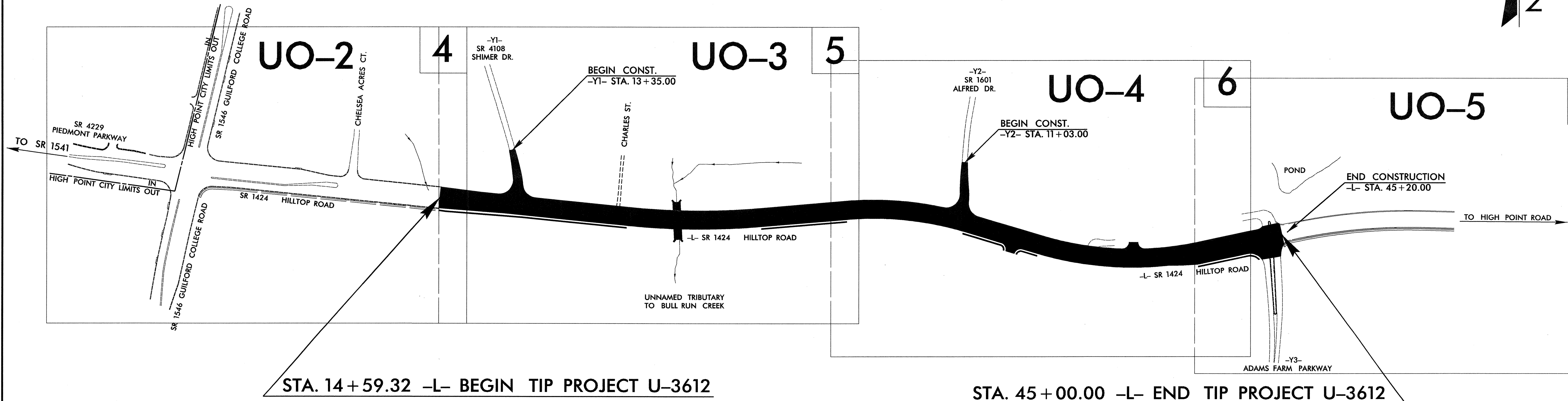
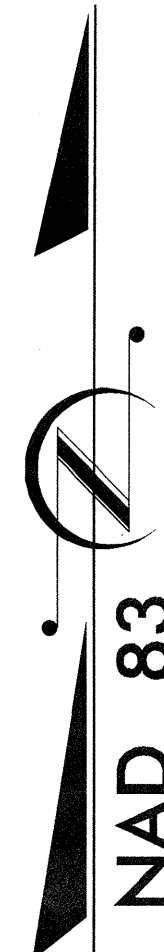
**GUILFORD COUNTY  
UTILITIES BY OTHERS**

**LOCATION: GREENSBORO - SR 1424 (HILLTOP ROAD) FROM EAST OF  
SR 1546 (GUILFORD COLLEGE ROAD) AT CHELSEA ACRES COURT  
TO ADAMS FARM PARKWAY**

**TIP: U-3612**



**VICINITY MAP**



**STA. 14 + 59.32 -L- BEGIN TIP PROJECT U-3612**

**STA. 45 + 00.00 -L- END TIP PROJECT U-3612**

**INDEX OF SHEETS**

<u>SHEET NO.</u>	<u>DESCRIPTION</u>
UO-1	TITLE SHEET
UO-2 THRU UO-5	UTILITIES BY OTHERS PLAN SHEETS

**UTILITY OWNERS ON PROJECT**

POWER - DUKE ENERGY  
TELEPHONE - BELL SOUTH  
CABLE - TIME WARNER  
GAS - PIEDMONT NATURAL GAS



PREPARED IN THE OFFICE OF:  
**DAVIS-MARTIN-POWELL  
AND ASSOCIATES, INC.**  
6415 OLD PLANK ROAD  
HIGH POINT, NC 27265  
PHONE (336) 886-4821  
FAX (336) 886-4458

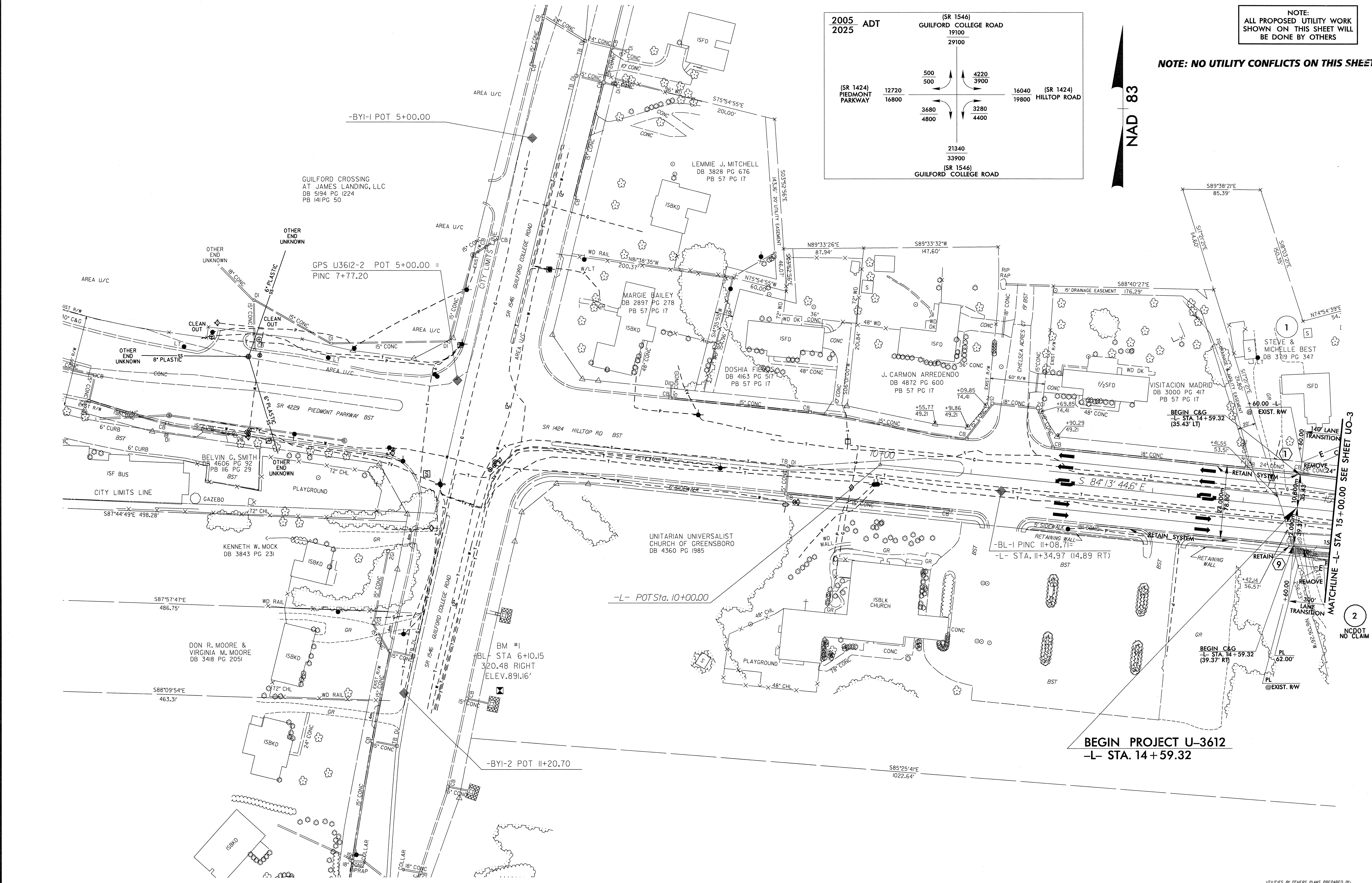
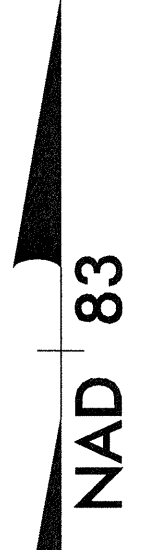
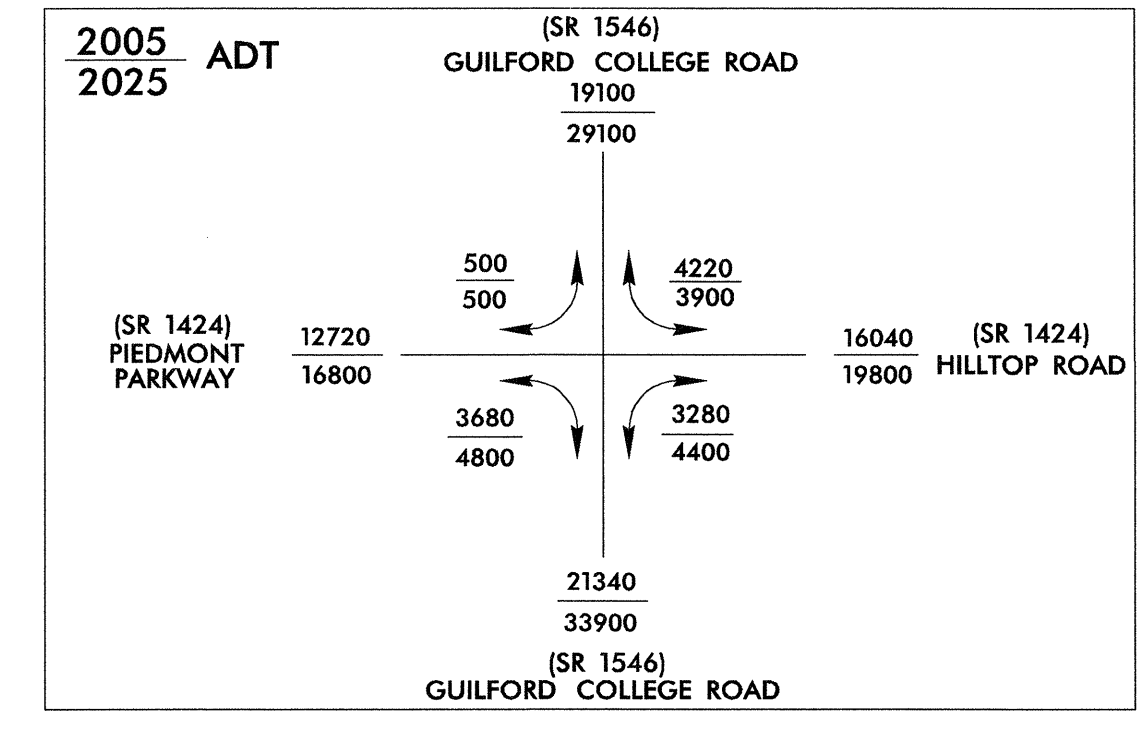
**Randy McNeill, P.E.** UTILITIES PROJECT MANAGER  
**Andy Larrick, P.E.** UTILITIES PROJECT ENGINEER  
**Andy Larrick, P.E.** UTILITIES PROJECT DESIGNER

SYSTEMS  
 DESIGN  
 CONSULTANTS  
 INC.

### UTILITIES BY OTHERS

NOTE:  
ALL PROPOSED UTILITY WORK  
SHOWN ON THIS SHEET WILL  
BE DONE BY OTHERS

NOTE: NO UTILITY CONFLICTS ON THIS SHEET.



BEGIN PROJECT U-3612  
-L- STA. 14 + 59.32

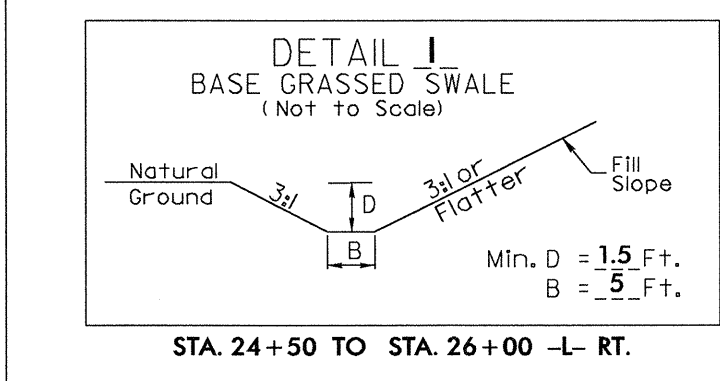
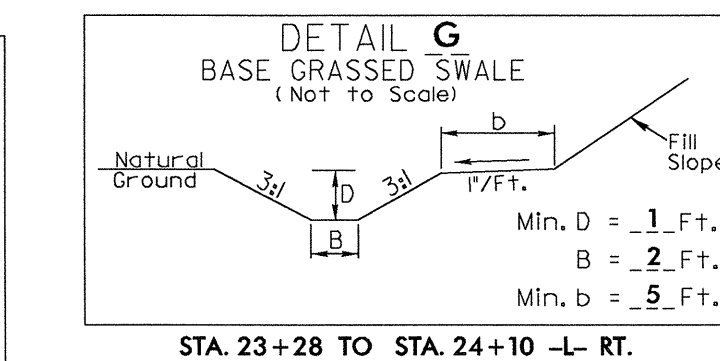
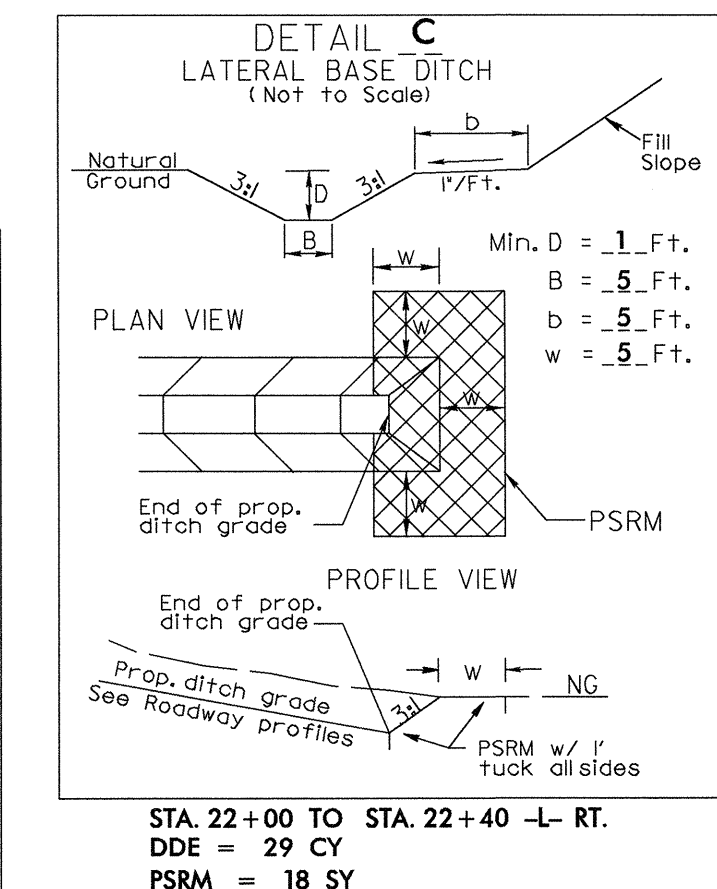
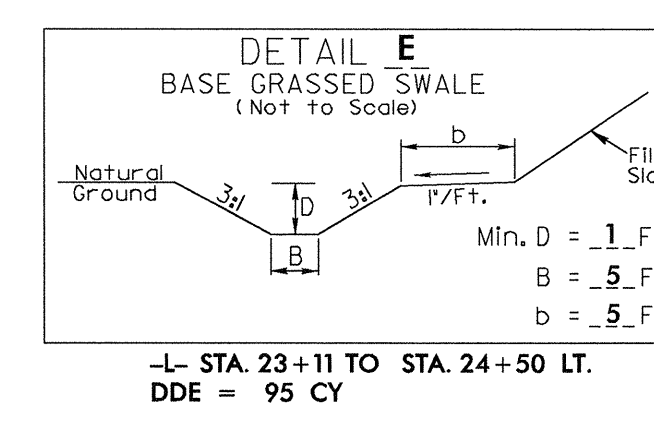
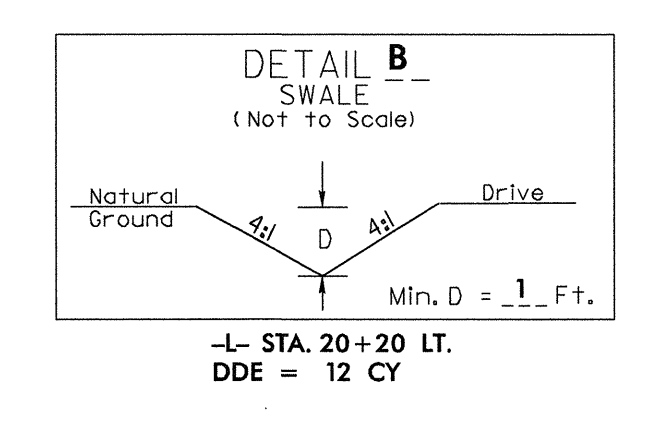
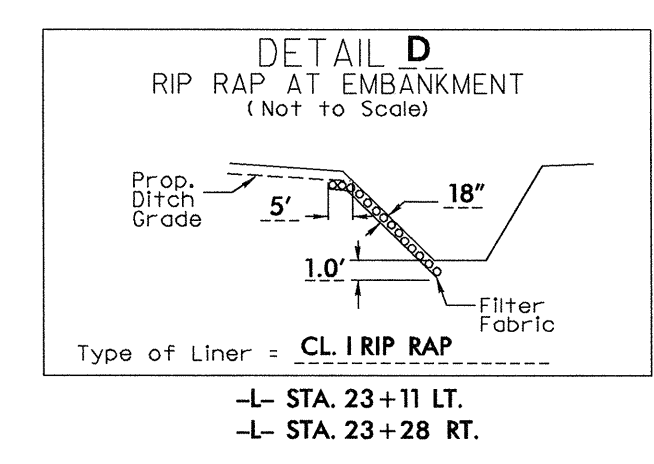
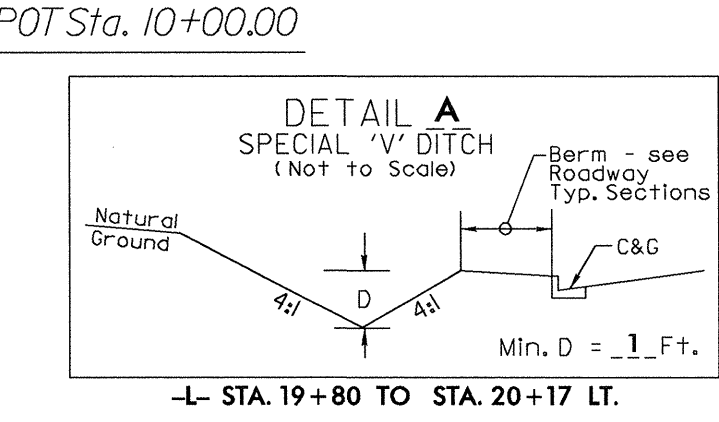
MATCHLINE -L- STA 15 + 00.00 SEE SHEET UO-3

2  
NCDOT  
NO CLAIM

**UTILITIES BY OTHERS**

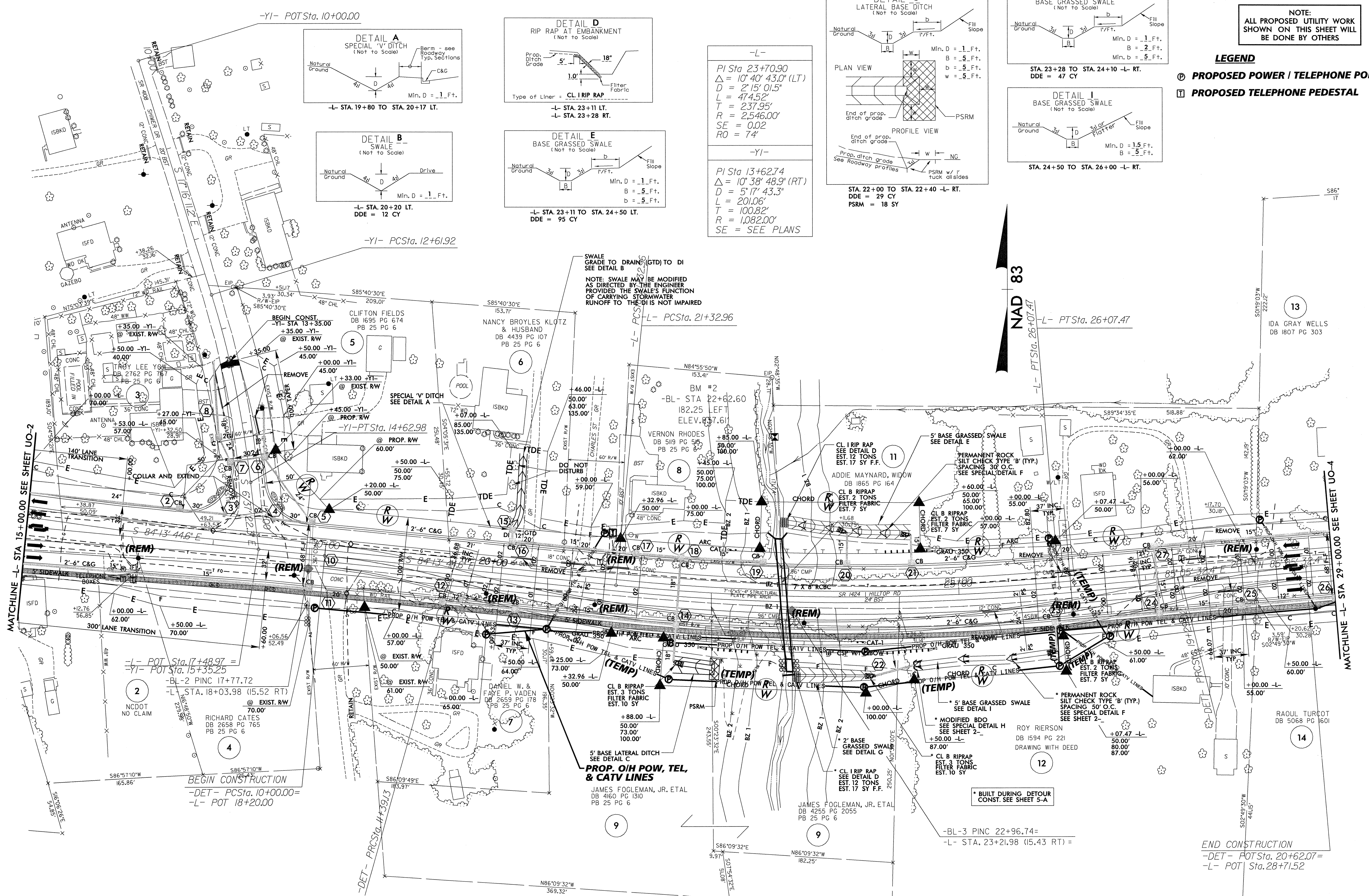
NOTE:  
ALL PROPOSED UTILITY WORK  
SHOWN ON THIS SHEET WILL  
BE DONE BY OTHERS

- LEGEND**
- ⊕ PROPOSED POWER / TELEPHONE POLE
  - ⊠ PROPOSED TELEPHONE PEDESTAL



-L-  
PI Sta 23+70.90  
Δ = 10° 40' 43.0" (LT)  
D = 2' 15" 01.5"  
L = 474.52'  
T = 237.95'  
R = 2,546.00'  
SE = 0.02  
RO = 74

-YI-  
PI Sta 13+62.74  
Δ = 10° 38' 48.9" (RT)  
D = 5' 17" 43.3"  
L = 201.06'  
T = 100.82'  
R = 1,082.00'  
SE = SEE PLANS



NAD 83  
26+07.47

END CONSTRUCTION  
-DET- POT Sta. 20+62.07 =  
-L- POT Sta. 28+71.52

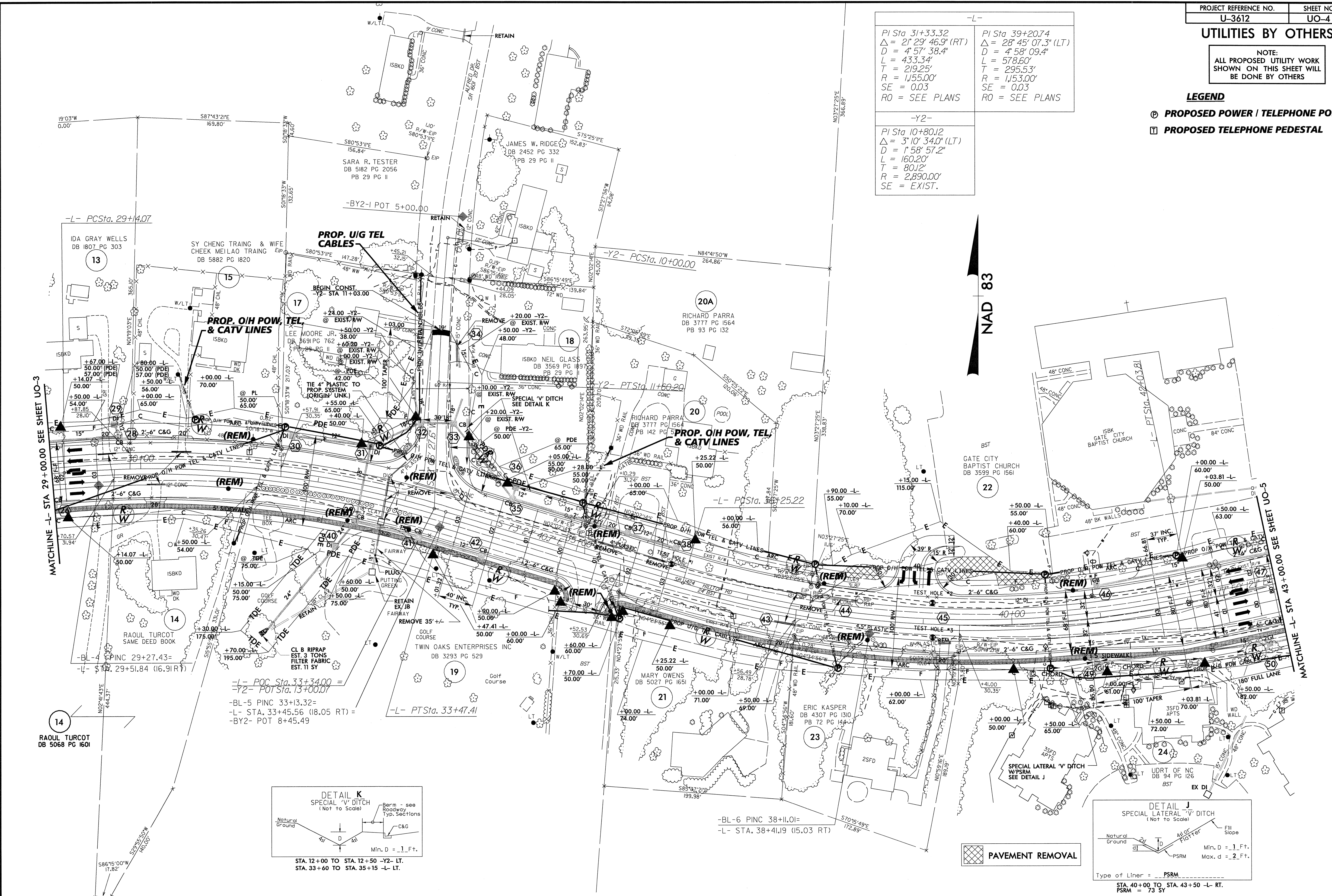
UTILITIES BY OTHERS

NOTE:  
ALL PROPOSED UTILITY WORK  
SHOWN ON THIS SHEET WILL  
BE DONE BY OTHERS

LEGEND

- ⊙ PROPOSED POWER / TELEPHONE POLE
- ⊠ PROPOSED TELEPHONE PEDESTAL

-L-	
PI Sta 31+33.32 $\Delta = 21^{\circ} 29' 46.9" (RT)$ $D = 4' 57' 38.4"$ $L = 433.34'$ $T = 219.25'$ $R = 1,155.00'$ $SE = 0.03$ $RO = SEE PLANS$	PI Sta 39+20.74 $\Delta = 28^{\circ} 45' 07.3" (LT)$ $D = 4' 58' 09.4"$ $L = 578.60'$ $T = 295.53'$ $R = 1,153.00'$ $SE = 0.03$ $RO = SEE PLANS$
-Y2-	
PI Sta 10+80.12 $\Delta = 3^{\circ} 10' 34.0" (LT)$ $D = 1' 58' 57.2"$ $L = 160.20'$ $T = 80.12'$ $R = 2,890.00'$ $SE = EXIST.$	



-L- PCSta. 29+4.07

-BY2- POT 5+00.00

-Y2- PCSta. 10+00.00

-L- PCSta. 50+25.22

-L- POC Sta. 33+34.00 =  
-Y2- POT Sta. 13+00.00

-BL-5 PINC 33+13.32=  
-L- STA. 33+45.56 (18.05 RT) =  
-BY2- POT 8+45.49

-L- PTSta. 33+47.41

-BL-6 PINC 38+11.01=  
-L- STA. 38+41.19 (15.03 RT)

14  
RAUL TURCOT  
DB 5068 PG 1601

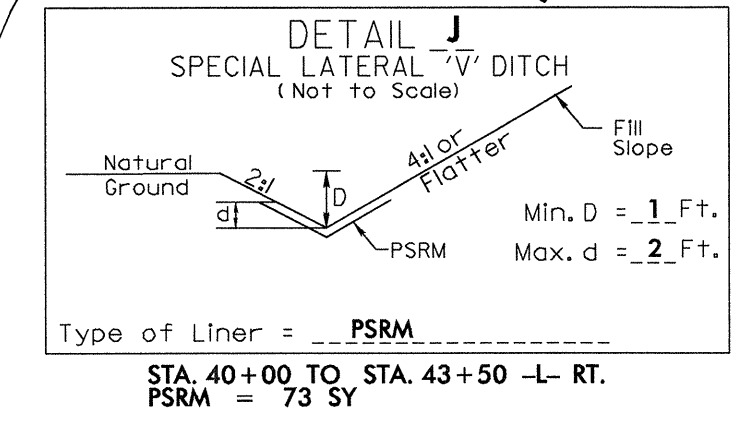
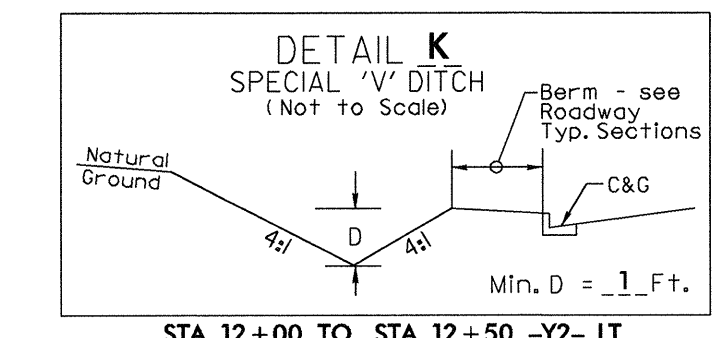
13  
IDA GRAY WELLS  
DB 1807 PG 303

15  
SY CHENG TRAIING & WIFE  
CHEEK MEILAO TRAIING  
DB 5882 PG 1820

PROP. U/G TEL  
& CATV CABLES

PROP. O/H POW,  
TEL & CATV LINES

PROP. O/H POW,  
TEL & CATV LINES



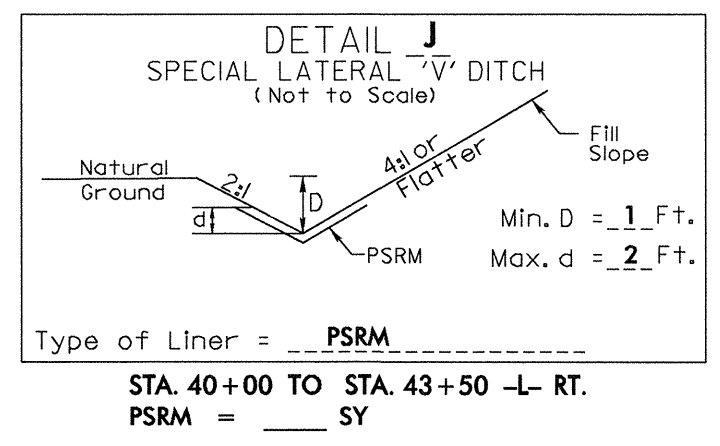
PAVEMENT REMOVAL

### UTILITIES BY OTHERS

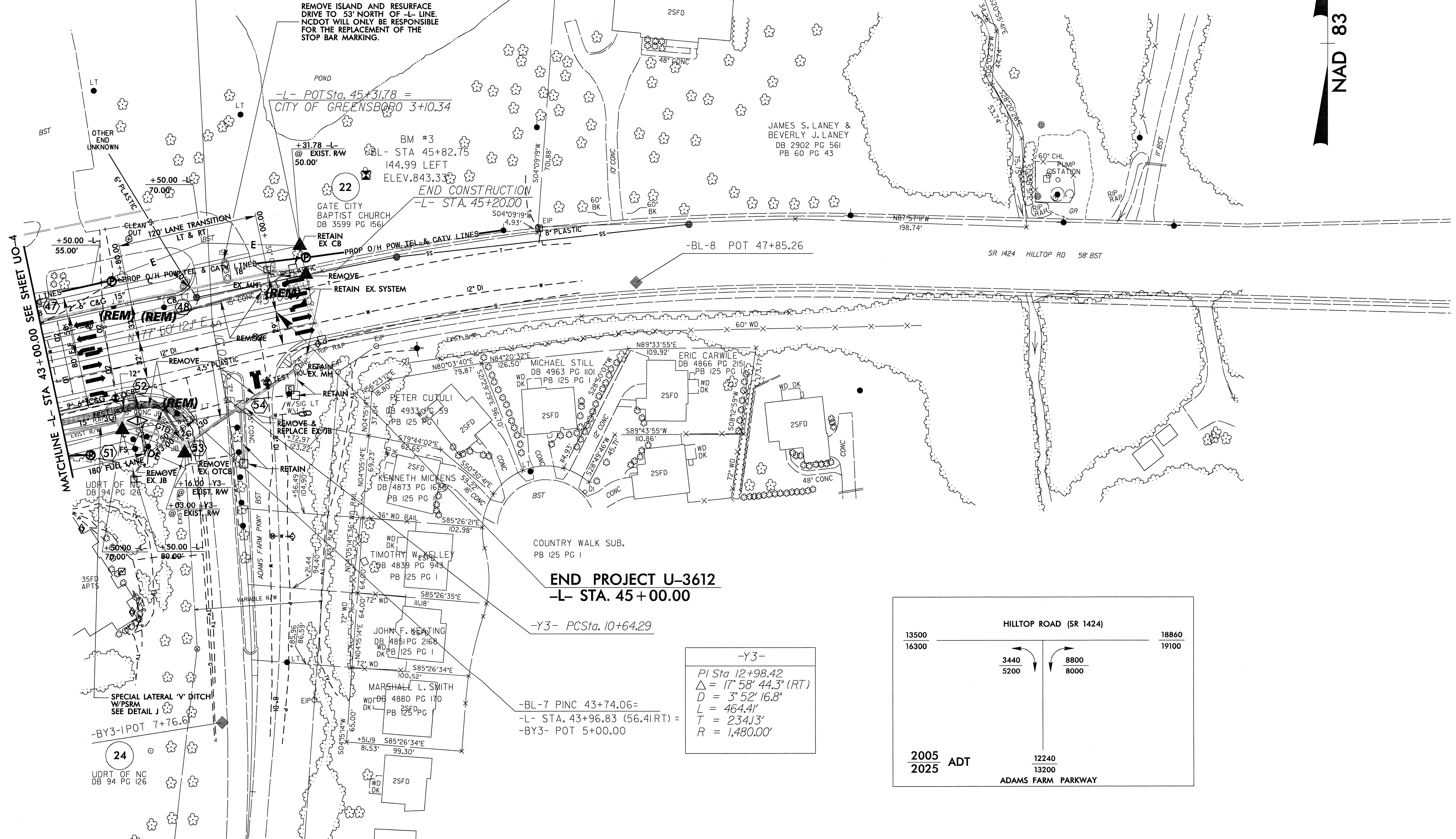
NOTE:  
ALL PROPOSED UTILITY WORK  
SHOWN ON THIS SHEET WILL  
BE DONE BY OTHERS

#### LEGEND

- ⊙ PROPOSED POWER / TELEPHONE POLE
- ⊠ PROPOSED TELEPHONE PEDESTAL



-L- POT Sta. 44+44.45 =  
-Y3- POT Sta. 10+00.00



END PROJECT U-3612  
-L- STA. 45+00.00

-Y3-  
PI Sta 12+98.42  
 $\Delta = 17^\circ 58' 44.3'' (RT)$   
 $D = 3' 52' 16.8''$   
 $L = 464.41'$   
 $T = 234.13'$   
 $R = 1,480.00'$

