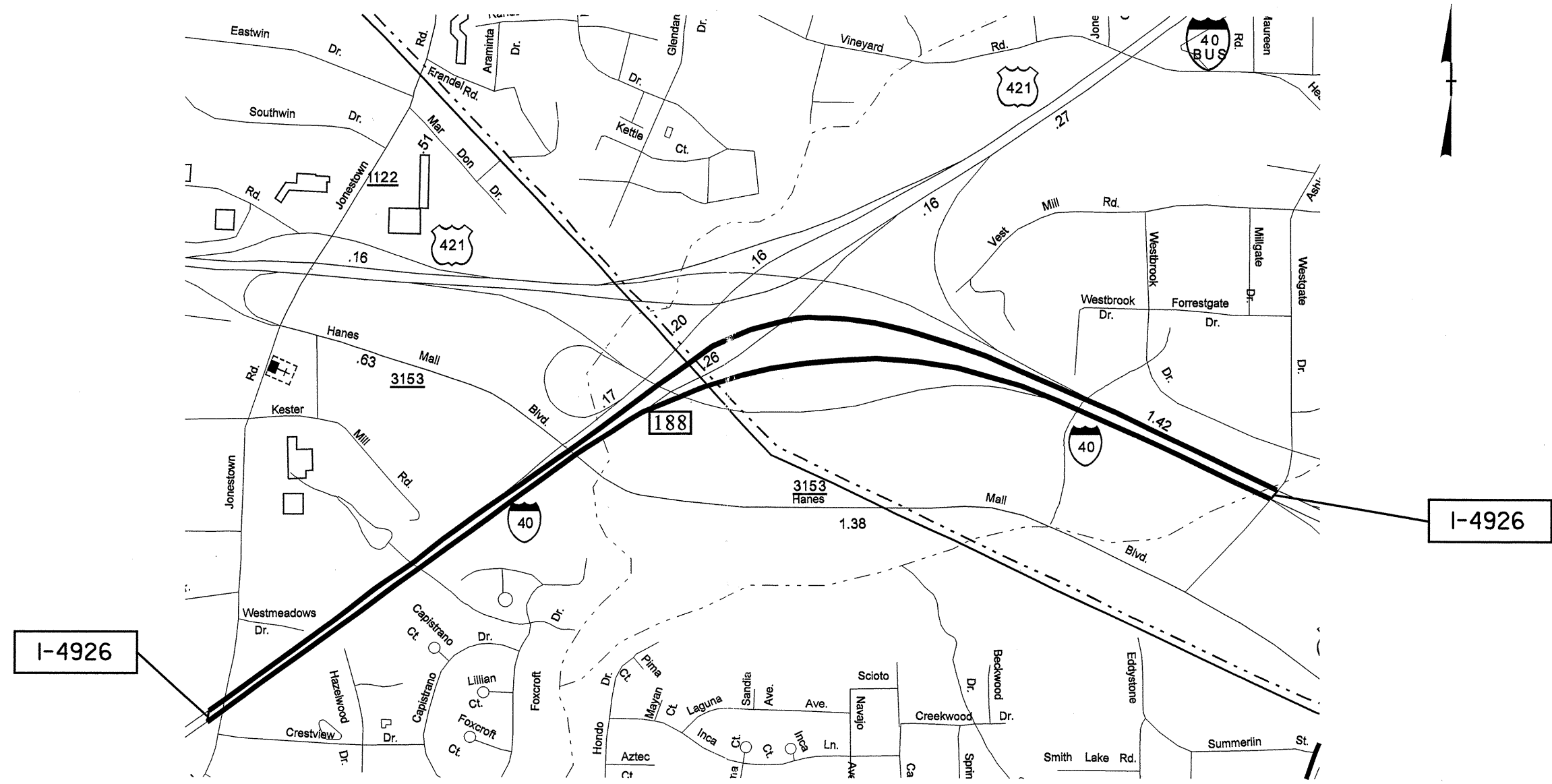


PROJECT REFERENCE NO.	SHEET NO.
40893.3.1	1

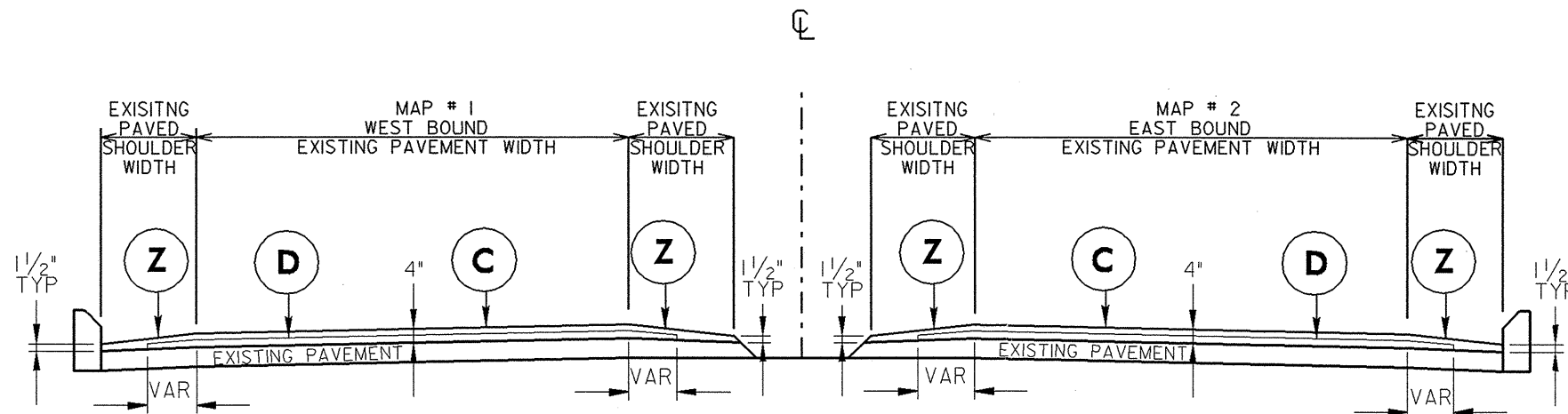


I-4926
 I-40, Westgate Center Drive to
 Jametown Road
 (US 421/I-40 Business) west of
 Winston-Salem, Forsyth County
 East and West Bound
 Pavement Rehabilitation

Forsyth County

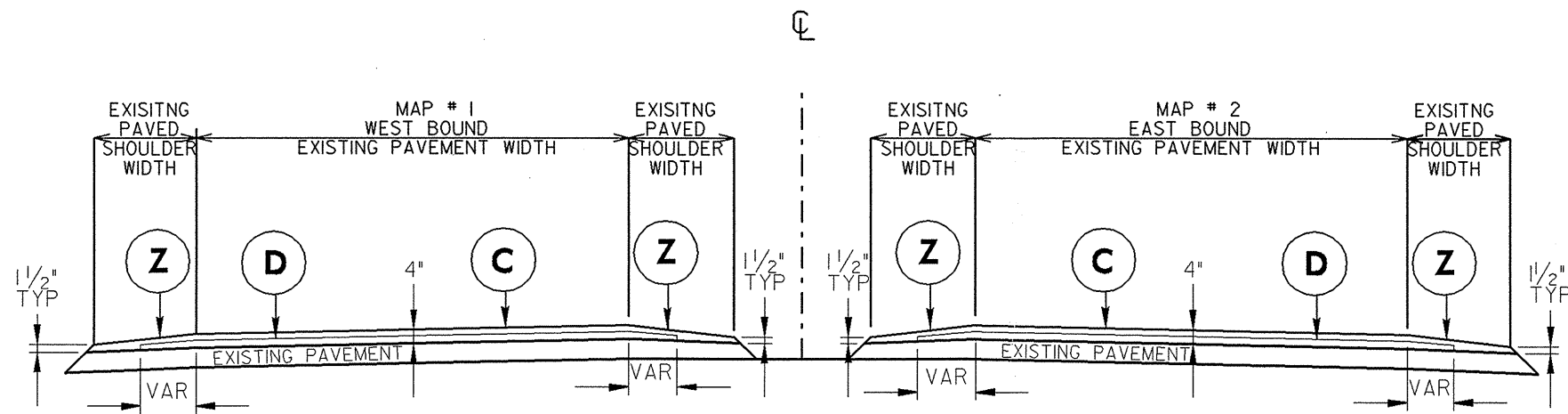
7/2/99

PROJECT REFERENCE NO.	SHEET NO.
40893.3.1	2



NOTE:
CONTRACTOR TO TAPER SURFACE
COURSE TO A THICKNESS OF
1 1/2" AT EXISTING EDGE OF
SHOULDERS (TYP)

TYPICAL SECTION NO.1



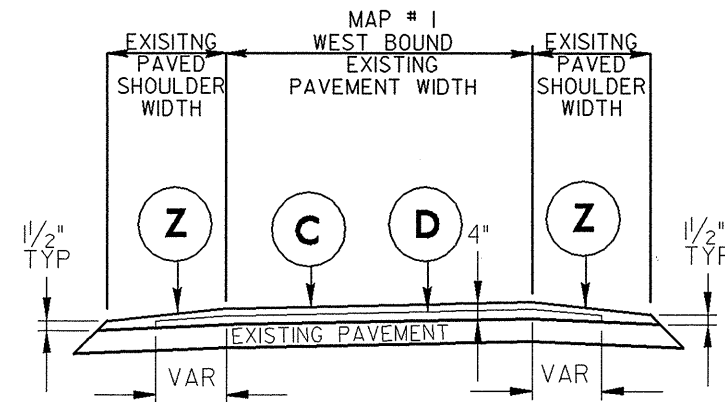
NOTE:
CONTRACTOR TO TAPER SURFACE
COURSE TO A THICKNESS OF
1 1/2" AT EXISTING EDGE OF
SHOULDERS (TYP)

TYPICAL SECTION NO.2

PAVEMENT SCHEDULE	
C	PROP. APPROX. 1 1/2" ASPHALT CONCRETE SURFACE COURSE, TYPE S9.5C, AT AN AVERAGE RATE OF 168 LBS. PER SQ. YD.
D	PROP. APPROX. 2 1/2" ASPHALT CONCRETE INTERMEDIATE COURSE, TYPE I19.0C, AT AN AVERAGE RATE OF 285 LBS. PER SQ. YD.
M	VARIABLE DEPTH MILLING , 0" TO 4" DEPTH.
Z	MILLED RUMBLE STRIPS

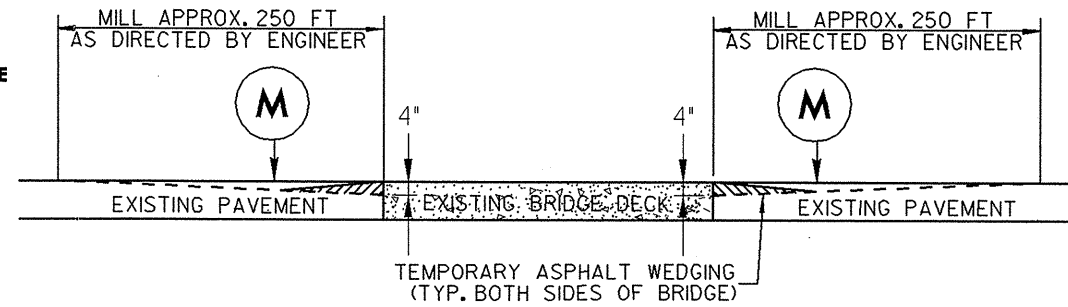
7/2/99

PROJECT REFERENCE NO.	SHEET NO.
40893.3.1	3

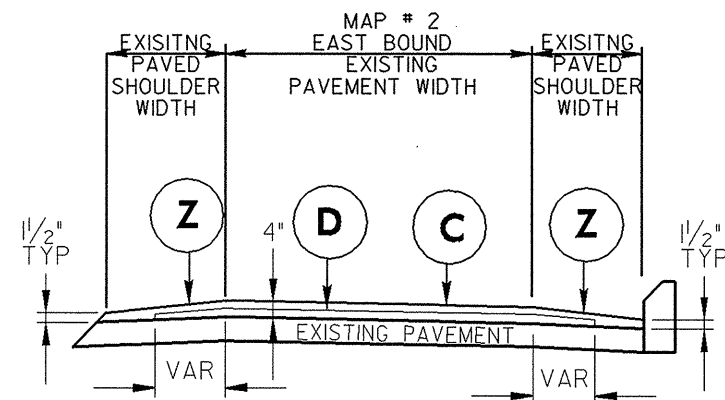


TYPICAL SECTION NO.3

NOTE:
CONTRACTOR TO TAPER SURFACE COURSE TO A THICKNESS OF 1 1/2" AT EXISTING EDGE OF SHOULDERS (TYP)



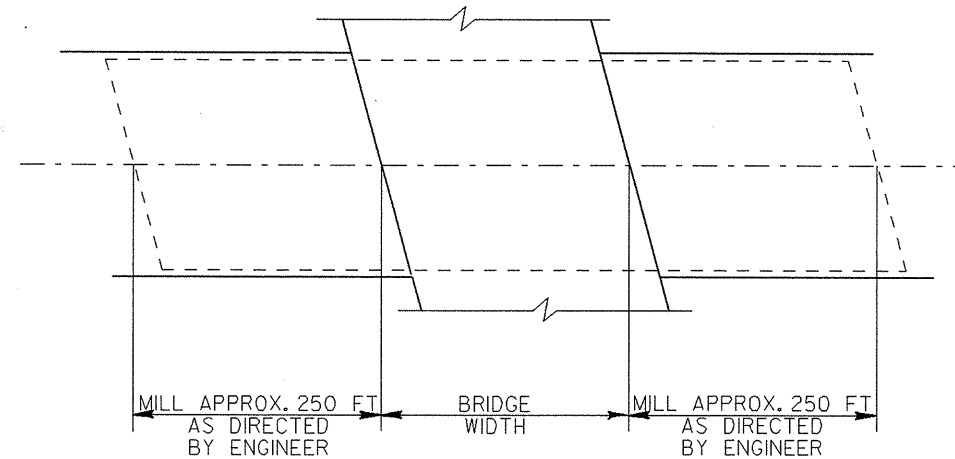
MILLING AT BRIDGE APPROACH



TYPICAL SECTION NO.4

NOTE:
CONTRACTOR TO TAPER SURFACE COURSE TO A THICKNESS OF 1 1/2" AT EXISTING EDGE OF SHOULDERS (TYP)

PAVEMENT SCHEDULE	
C	PROP. APPROX. 1 1/2" ASPHALT CONCRETE SURFACE COURSE, TYPE 89.5C, AT AN AVERAGE RATE OF 168 LBS. PER SQ. YD.
D	PROP. APPROX. 2 1/2" ASPHALT CONCRETE INTERMEDIATE COURSE, TYPE 119.0C, AT AN AVERAGE RATE OF 285 LBS. PER SQ. YD.
M	VARIABLE DEPTH MILLING, 0" TO 4" DEPTH.
Z	MILLED RUMBLE STRIPS



* MILL ASPHALT 0"-4"
(FULL WIDTH OF PAVEMENT)
TO MAINTAIN BRIDGE CLEARANCE

**MILLING ASPHALT PAVEMENT
AT BRIDGE APPROACH
PLAN VIEW**

PROJECT NO.	SHEET NO.	TOTAL NO.
40893.3.1	4	

Forsyth County 2007 Resurfacing Bridge Listing

Map No.	Route No.	Route Name	Bridge No.	Feature Intersected	Vertical (Overhead) Clearance	Recommended Treatment, From Bridge Maintenance
1,2	SR 1122	Jonestown Road	193	I-40	16 Ft 7 IN., EBL Ramp	Do not Mill, Pave per Contract
1,2	SR 1126	Hanes Mall Blvd.	436	I-40	16 Ft 10 IN.,	Do not Mill, Pave per Contract
1	I-40 WBL	I-40 WBL	508	I-40 Bus EBL	17 Ft 1 IN., WBL Ramp	Do not Mill, Pave per Contract
1	US 421, EBL Ramp	US 421, EBL Ramp	444	I-40, I-40 Bus	18 Ft 8 IN., EBL Ramp	Do not Mill, Pave per Contract

I-4926

PROJECT NO.	SHEET NO.	TOTAL NO.
40893.3.1	5	

SUMMARY OF QUANTITIES

PROJECT NO	COUNTY	MAP NO	ROUTE	DESCRIPTION	TYP NO	LENGTH MI	WIDTH FT	VARIABLE DEPTH MILLING, 0'-4" SY	MILLED RUMBLE STRIPS LF	INTERMEDIATE COURSE, 119.0C TONS	SURFACE COURSE, S9.5C TONS	PG 64-22 PLANT MIX TONS	PG 70-22 PLANT MIX TONS	PATCHING EXISTING PAVEMENT TONS	PORTABLE LIGHT PLANT LS
40893	Forsyth	1	I-40 WB	BRIDGE AT WESTGATE TO GORE AT 421 NB TURN LANE	1	0.4	68	1889	4224	2622	1544	123	93	2	1
		"	"	GORE AT I-40/421 NB TURN LANE TO GORE AT BUS 40 WB MERGE	3	0.734	56	3111	7751	4379	2578	206	155		
		"	"	GORE AT I-40/BUS 40 WB MERGE TO RIGHT LANE MERGE FROM BUS 40	1	0.5	68		5280	3742	2203	176	132		
		"	"	I-40 WB FROM RIGHT LANE MERGE FROM BUS 40 TO PVMT JT NEAR SR 1122	1,2	0.516	56		5449	2667	1570	125	94		
TOTAL FOR MAP NO. 1						2.15		5000	22704	13410	7895	630	474	2	1
		2	I-40 EB	FROM PVMT JT JUST WEST OF SR 1122 OVERPASS TO I-40/BUS 40/421 SPLIT	1,2	0.808	68		8533	5175	3047	243	183	10	1
		"	"	FROM GORE AT BUS 40/I-40 SPLIT TO GORE AT I-40/421 MERGE	4	0.482	38		5090	1694	996	80	60		
		"	"	FROM GRASS GORE TO WESTGATE BRIDGE	1,2	0.148	68	1889	1558	1030	606	48	36		
TOTAL FOR MAP NO. 2						1.438		1889	15181	7899	4649	371	279	10	1
TOTAL FOR PROJ NO. 40893						3.588		6889	37885	21309	12544	1001	753	12	2
GRAND TOTAL						3.588		6889	37885	21309	12544	1001	753	12	2

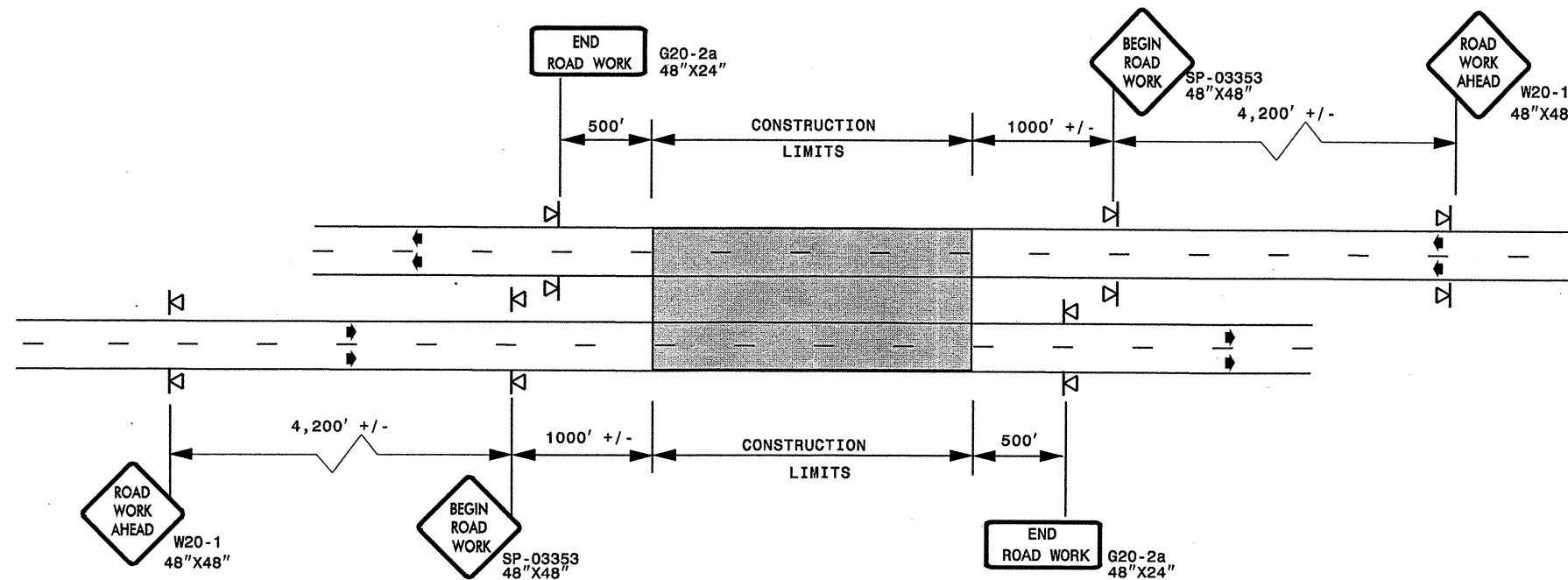
PROJECT NO.	SHEET NO.	TOTAL NO.
40893.3.1	6	

THERMOPLASTIC AND PAINT QUANTITIES

PROJECT NO	COUNTY	MAP NO	ROUTE	DESCRIPTION	4415000000-E	4420000000-N	4430000000-E	4480000000-N	4685000000-E	469 000000-E	4686000000-E	4695000000-E	4815000000-E	4815000000-E	4825000000-E	4721000000-E				4725000000-E		4905000000-N
					FLASHING ARROW PANELS, TYPE C EA	CHANGEAB LE MESSAGE SIGN EA	DRUMS EA	TRUCK MOUNTED IMP. ATTEN (60 MPH) EA	6" X 90 M WHITE THERMO LF	6" X 90 M YELLOW THERMO LF	6" X 120 M WHITE THERMO LF	12" X 90 M WHITE THERMO LF	6" PAINT WHITE LF	6" PAINT YELLOW LF	12" PAINT WHITE LF	THERMO MSG I-40 EA	THERMO MSG US 421 EA	THERMO MSG LANE ENDS 1000 FT	THERMO MSG LANE ENDS 800 FT	THERMO MSG ONLY 120 M EA	THERMO STR ARROW 90 M EA	THERMO RT ARROW 90 M EA
40893	Forsyth	1	I-40 WB	BRIDGE AT WESTGATE TO GORE AT 421 NB TURN LANE	1	1	320	1	2,112	2,112	185	1,860	2,297	2,112	1,860	4	5					26
		"	"	GORE AT I-40/421 NB TURN LANE TO GORE AT BUS 40 WB MERGE					3,876	3,876	1,744	1,860	5,620	3,876	1,860			14	13		6	48
		"	"	GORE AT I-40/BUS 40 WB MERGE TO RIGHT LANE MERGE FROM BUS 40					2,640	2,640	1,980	1,190	4,620	2,640	1,190							33
		"	"	I-40 WB FROM RIGHT LANE MERGE FROM BUS 40 TO PVTMT JT NEAR SR 1122					2,724	2,724	1,362		4,086	2,724								34
TOTAL FOR MAP NO. 1					1	1	320	1	11,352	11,352	5,271	4,910	16,623	11,352	4,910	4	5	14	13		6	142
		2	I-40 EB	FROM PVTMT JT JUST WEST OF SR 1122 OVERPASS TO I-40/BUS 40/421 SPLIT	1	1	320	1	4,266	4,266	2,193	1,490	6,459	4,266	1,490							107
		"	"	FROM GORE AT BUS 40/I-40 SPLIT TO GORE AT I-40/421 MERGE					2,545	2,545	636		3,181	2,545								32
		"	"	FROM GRASS GORE TO WESTGATE BRIDGE					779	779	585	1,190	1,364	779	1,190					8		4
TOTAL FOR MAP NO. 2					1	1	320	1	7,590	7,590	3,414	2,680	11,004	7,590	2,680					8		4
TOTAL FOR PROJ NO. 40893					2	2	640	2	18,942	18,942	8,685	7,590	27,627	18,942	7,590	4	5	14	13	8	6	4
GRAND TOTAL					2	2	640	2	18,942	18,942	8,685	7,590	27,627	18,942	7,590	4	5	14	13	8	6	4
									37,884				46,569					44		10		290

ADVANCED WORK ZONE WARNING SIGNING FOR FREEWAYS (4 LANES OR GREATER)

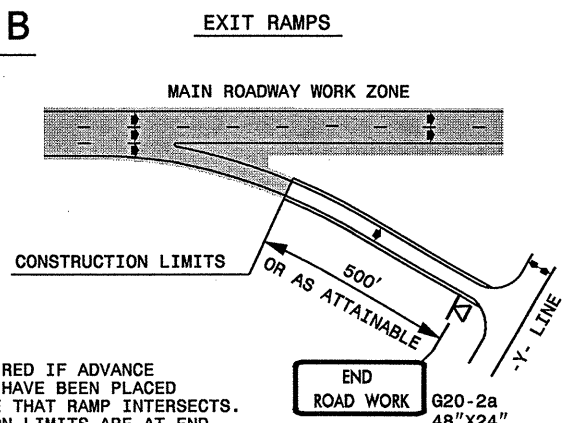
DETAIL A



STATE OF NORTH CAROLINA
DEPT. OF TRANSPORTATION
DIVISION OF HIGHWAYS
RALEIGH, N.C.

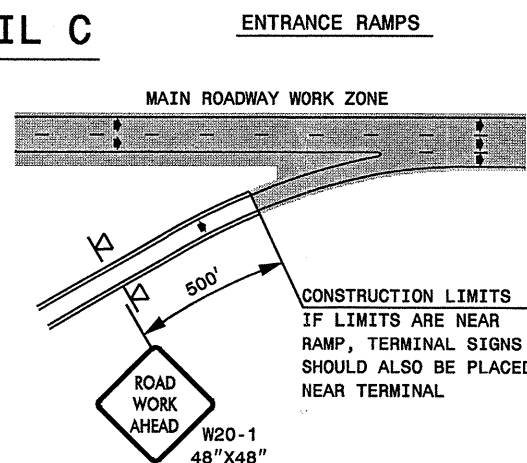
ROADWAYS INTERSECTING ALONG FREEWAY WORK ZONE (Y-LINES)

DETAIL B

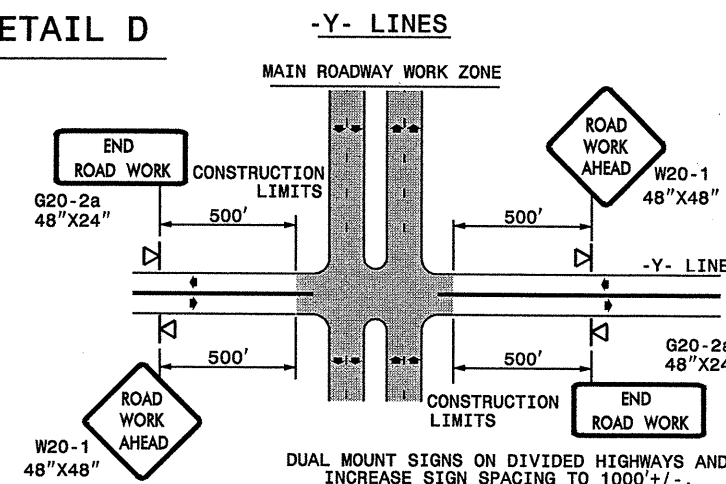


NOTE:
SIGN NOT REQUIRED IF ADVANCE WARNING SIGNS HAVE BEEN PLACED ALONG -Y- LINE THAT RAMP INTERSECTS. IF CONSTRUCTION LIMITS ARE AT END OF RAMP, PLACE SIGN AT END OF RAMP.

DETAIL C



DETAIL D



**DETAIL DRAWING
FOR FREEWAYS
WORK ZONE WARNING SIGNS
(SHORT-DURATION LANE CLOSURES)**

GENERAL NOTES

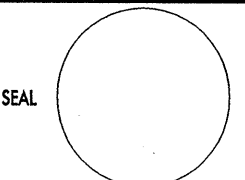

- USE FLUORESCENT ORANGE SHEETING (TYPE VII OR HIGHER) ON ALL ADVANCED WORK ZONE SIGNS.
- DO NOT INSTALL ADVANCE WARNING SIGNS MORE THAN 3 DAYS PRIOR TO BEGINNING OF WORK.
- ALL SIGN SPACING DIMENSIONS ARE APPROXIMATE, FIELD ADJUST AS NECESSARY OR AS DIRECTED.
- USE PORTABLE WORK ZONE SIGNS ONLY WITH PORTABLE WORK ZONE SIGN STANDS SPECIFICALLY DESIGNED FOR ONE ANOTHER. PORTABLE WORK ZONE SIGNS MAY BE ROLL UP OR APPROVED COMPOSITE.
- PROVIDE PORTABLE WORK ZONE SIGN STANDS, PORTABLE SIGNS AND SIGN SHEETING WHICH ARE LISTED ON THE NORTH CAROLINA DEPARTMENT OF TRANSPORTATION'S APPROVED PRODUCT LIST OR ACCEPTED AS TRAFFIC QUALIFIED BY THE TRAFFIC CONTROL UNIT.
- ** TWO-WAY UNDIVIDED ADVANCE WARNING SIGN CONFIGURATION MAY BE USED ON MULTI-LANE FACILITIES WHERE CONDITIONS LIMIT THE USE OF DUAL MOUNTED SIGNS AS DETERMINED BY THE ENGINEER.

LEGEND

◁ PORTABLE SIGN

➡ DIRECTION OF TRAFFIC FLOW

SHEET 1 OF 1

APPROVED: _____	DATE: _____	DETAIL DRAWING FOR FREEWAYS WORK ZONE WARNING SIGNS	
			
SCALE: NONE		REVISIONS	
DATE: _____		7-98	10/01
DESIGN BY: _____		10-98	03/04
REVIEWED BY: _____		01/01	11/04

I7-NOV-2006 15:22
 \\DOT\DFSROOT\TO\GROUPS-WZTCCC\design\group4\resurfacing2006\div09\40893for synth\40893freeway4lanesgreat July2006.dgn
 AT WZTCC206427
 pseymore

