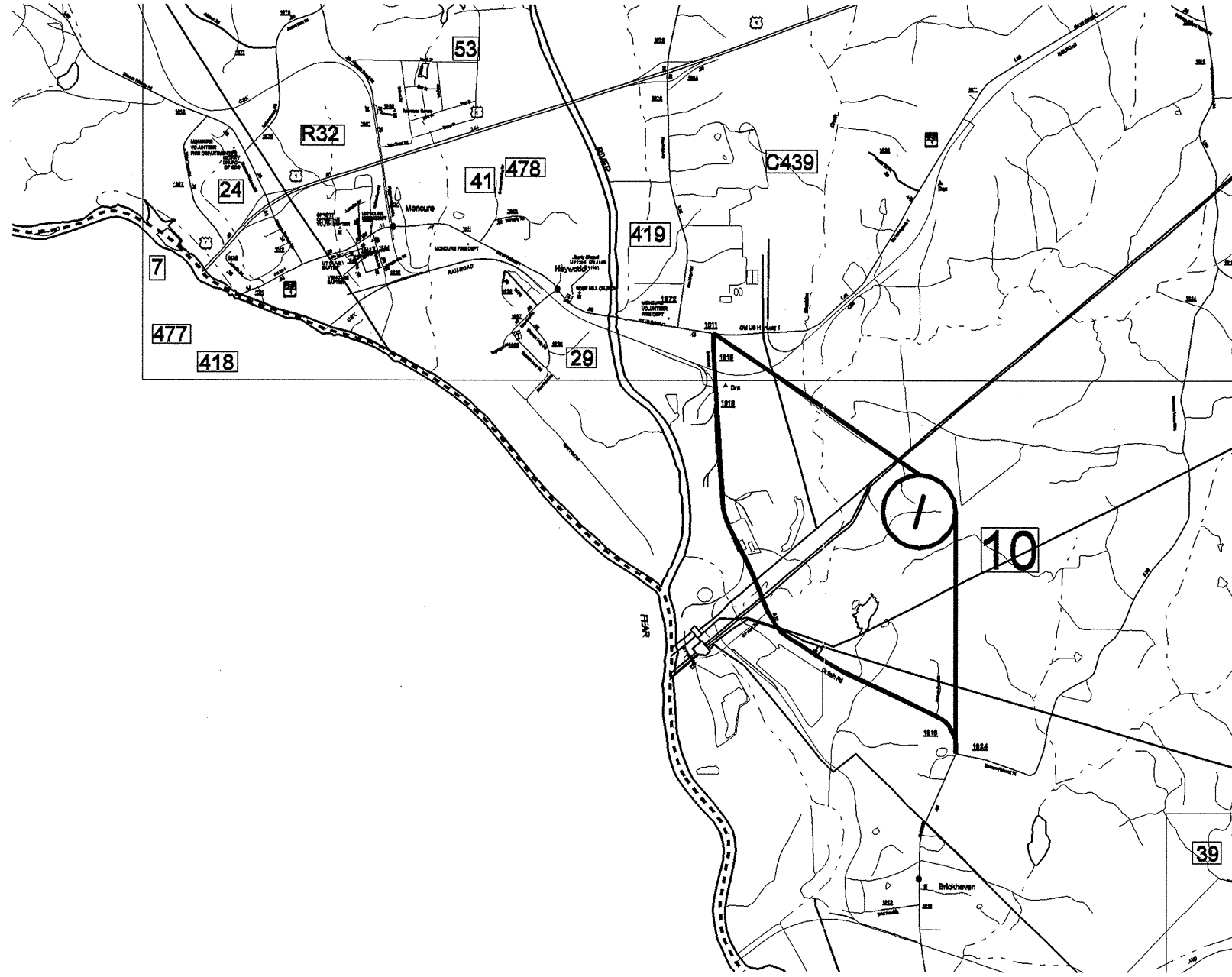


# CHATHAM CO.

WBS ELEMENT	SHEET NO.
8CR.20191.6	1

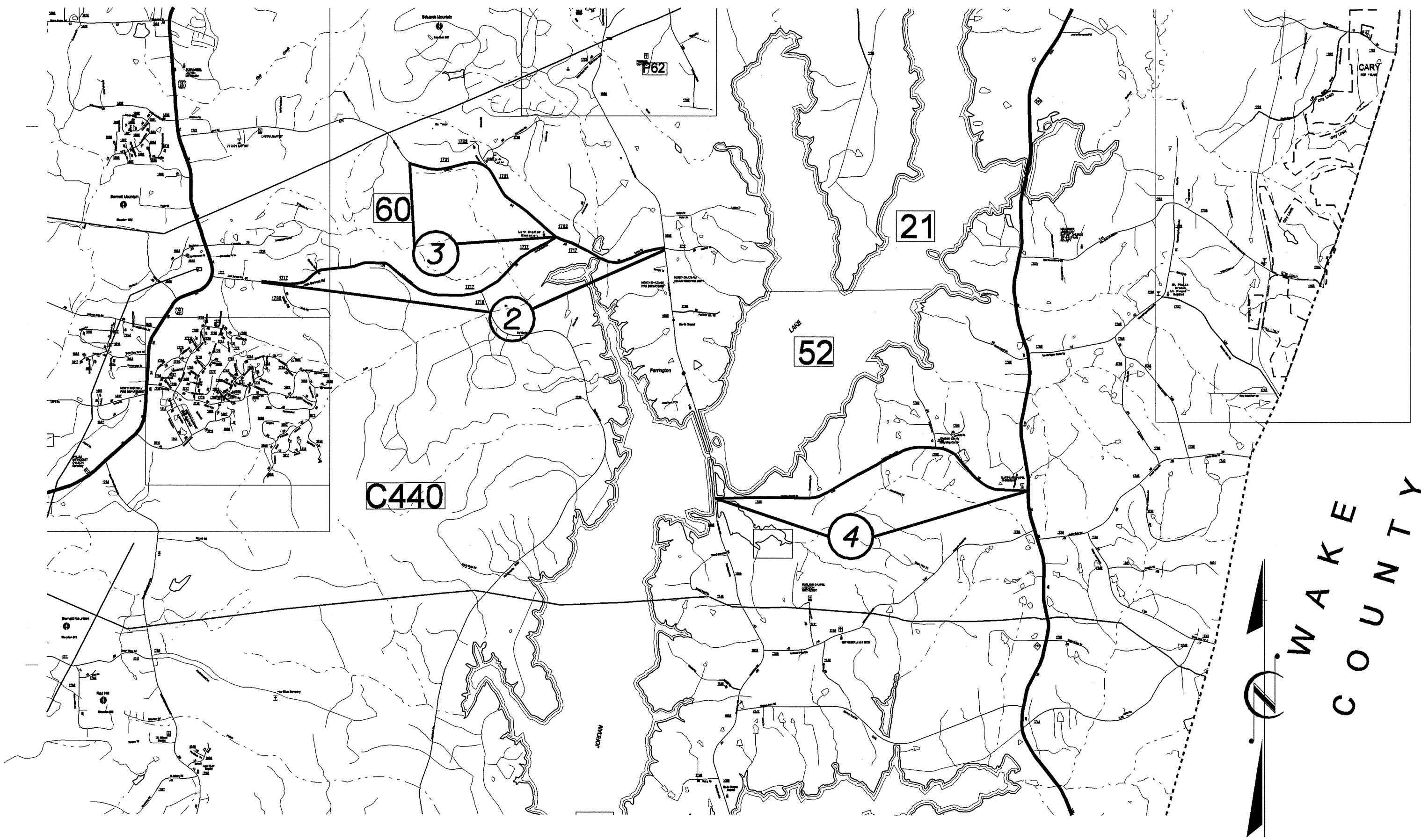


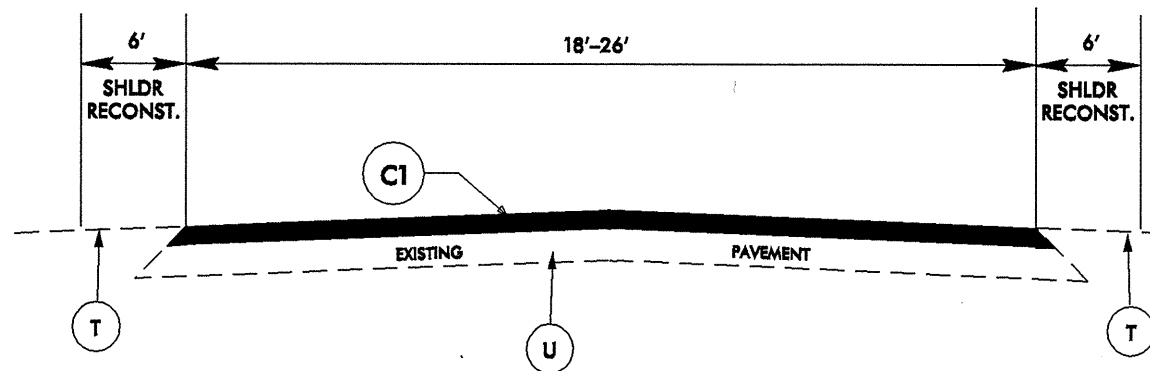
040397

27-NOV-2006 08:33  
C:\projects\division\_8\8cr-20191.6\chatham-submittal\revised\chath.dgn

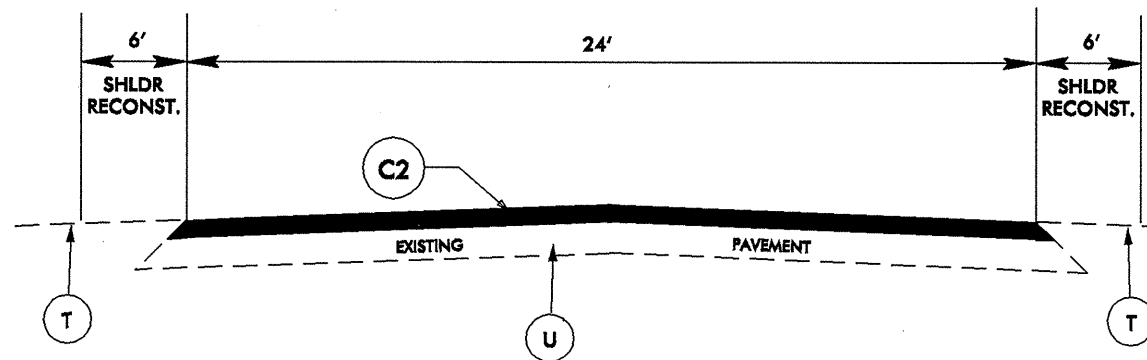
# CHATHAM CO.

WBS ELEMENT	SHEET NO.
8CR.20191.6	2

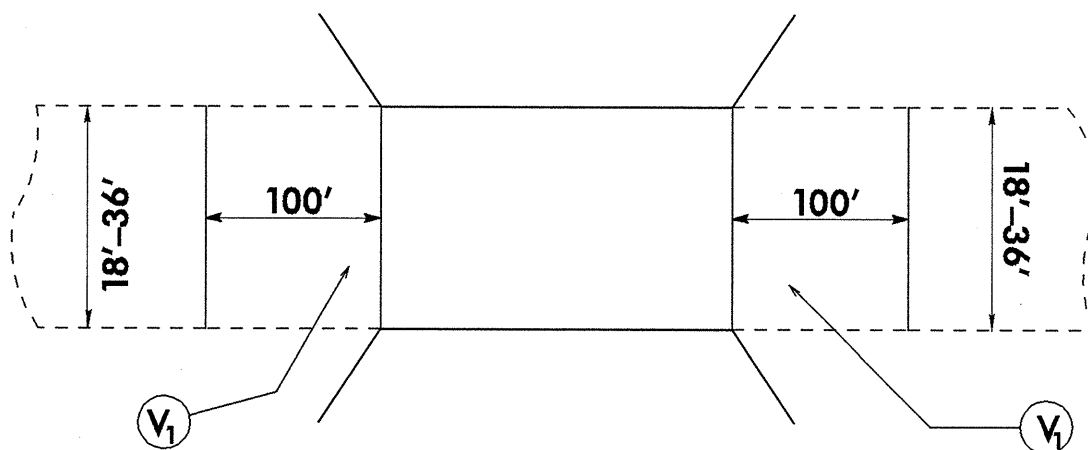




**TYPICAL SECTION NO.1**



**TYPICAL SECTION NO.2**



**BRIDGE TYPICAL SECTION**

PAVEMENT SCHEDULE	
C1	PROP. APPROX. 1.5" ASPHALT CONC. SURFACE COURSE, TYPE S9.5B, AT AN AVERAGE RATE OF 168 LBS. PER SQ. YD.
C2	PROP. APPROX. 3.0" ASPHALT CONC. SURFACE COURSE, TYPE S9.5C, AT AN AVERAGE RATE OF 168 LBS. PER SQ. YD. IN EACH OF 2 LAYERS.
T	EARTH MATERIAL
U	EXISTING PAVEMENT
VI	MILLING ASPHALT PAVEMENT ON BRIDGE TO AN ELEV. 1.5" BELOW CONCRETE BRIDGEDECK, TAPERING IN 100' TO PAVEMENT SURFACE

048397  
 14-NOV-2006 15:33  
 rsurfacing p2.dwg  
 8\8cr-20191.6\chatham-submittal\chat\_twp.dgn

PROJECT NO.	SHEET NO.	TOTAL NO.
8CR.20191.6	4	5

## SUMMARY OF QUANTITIES

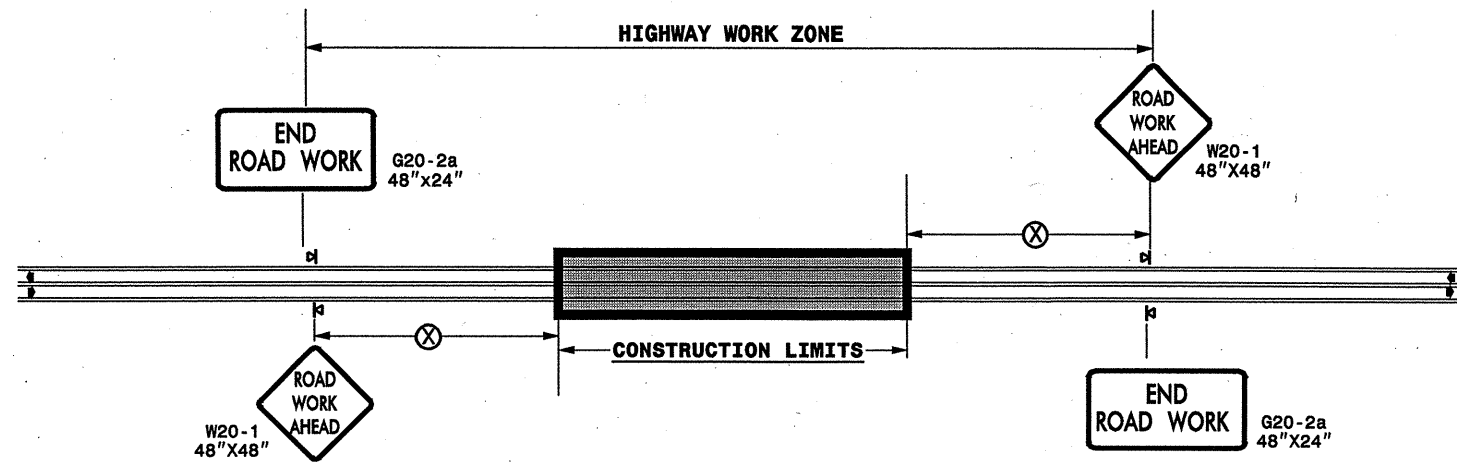
PROJECT NO	COUNTY	MAP NO	ROUTE	DESCRIPTION	TYP NO	LENGTH MI	WIDTH FT	INCIDENTAL STONE BASE TONS	SHOULDER RECONSTRUCTION SMI	INCIDENTAL MILLING SY	SURFACE COURSE, S9.5B TONS	SURFACE COURSE, S9.5C TONS	PG 64-22 PLANT MIX TONS	PG 70-22 PLANT MIX TONS	PATCHING EXISTING PAVEMENT TONS	METER OR VALVE BOX EA	SEED & MULCHING AC
8CR.20191.6	Chatham	1	SR 1916	FROM SR 1924 TO SR 1011	2	2.73	24	50	5.46	120		6855		411	50		5.46
		2	SR 1717	FROM NEW PVMT WEST OF SR 1720 TO SR 1008	1	3.87	20-25	75	7.74	445	4300		258		140		5.81
		3	SR 1721	FROM JOINT 1500 FEET EAST OF US 15-501 TO SR 1717	1	3.3	22	50	6.6	100	3600		216		100	3	4.95
		4	SR 1752	FROM SR 1008 TO NC 751	1	2.8	20	40	5.6	100	2920		175		150		4.20
<b>TOTAL FOR PROJ NO. 8CR.20191.6</b>						<b>12.7</b>		<b>215</b>	<b>25.4</b>	<b>765</b>	<b>10820</b>	<b>6855</b>	<b>649</b>	<b>411</b>	<b>440</b>	<b>3</b>	<b>20.42</b>
<b>GRAND TOTAL</b>						<b>12.7</b>		<b>215</b>	<b>25.4</b>	<b>765</b>	<b>10820</b>	<b>6855</b>	<b>649</b>	<b>411</b>	<b>440</b>	<b>3</b>	<b>20.42</b>

PROJECT NO.	SHEET NO.	TOTAL NO.
8CR.20191.6	5	5

## THERMOPLASTIC AND PAINT QUANTITIES

PROJECT NO	COUNTY	MAP NO	ROUTE	DESCRIPTION	4685000000-E	4686000000-E	4705000000-E	4710000000-E	4721000000-E		4725000000-E		4810000000-E		4900000000-N
					4" X 90 M WHITE THERMO LF	4" X 120 M YELLOW THERMO LF	16" X 120 M WHITE THERMO LF	24" X 120 M WHITE THERMO LF	THERMO RXR 120 M EA	THERMO MSG SCHOOL 120 M EA	THERMO LT ARROW 90 M EA	THERMO STR & RT ARROW 90 M EA	4" WHITE PAINT LF	4" YELLOW PAINT LF	YELLOW & YELLOW MARKERS EA
8CR.20191.6	Chatham	1	SR 1916	FROM SR 1924 TO SR 1011	29,375	18,018	200	100	8						180
		2	SR 1717	FROM NEW PVMT WEST OF SR 1720 TO SR 1008	41,641	25,542					4	2			255
		3	SR 1721	FROM JOINT 1500 FEET EAST OF US 15-501 TO SR 1717	35,508	21,780		100		12	6				218
		4	SR 1752	FROM SR 1008 TO NC 751									30,128	18,480	185
<b>TOTAL FOR PROJ NO. 8CR.20191.6</b>					<b>106,524</b>	<b>65,340</b>	<b>200</b>	<b>200</b>	<b>8</b>	<b>12</b>	<b>10</b>	<b>2</b>	<b>30,128</b>	<b>18,480</b>	<b>838</b>
									<b>20</b>		<b>12</b>		<b>48,608</b>		
<b>GRAND TOTAL</b>					<b>106,524</b>	<b>65,340</b>	<b>200</b>	<b>200</b>	<b>8</b>	<b>12</b>	<b>10</b>	<b>2</b>	<b>30,128</b>	<b>18,480</b>	<b>838</b>
									<b>20</b>		<b>12</b>		<b>48,608</b>		

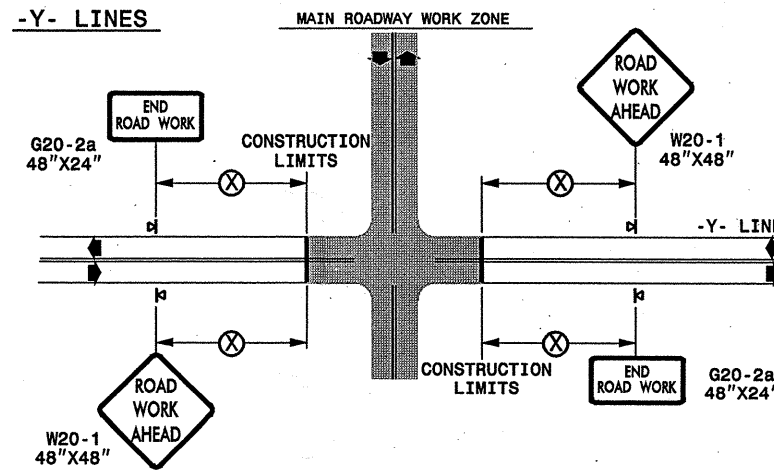
**TWO-WAY UNDIVIDED \*\* (L-LINES)**



POSTED SPEED LIMIT (M.P.H.)	RECOMMENDED MINIMUM SIGN SPACING
≤ 50	500'
≥ 55	1000'

STATE OF NORTH CAROLINA  
DEPT. OF TRANSPORTATION  
DIVISION OF HIGHWAYS  
RALEIGH, N.C.

**ROADWAYS INTERSECTING ALONG 2 WAY UNDIVIDED WORK ZONE (Y-LINES)**



**GENERAL NOTES**

- USE FLUORESCENT ORANGE SHEETING (TYPE VII OR HIGHER) ON ALL ADVANCED WORK ZONE SIGNS.
- DO NOT INSTALL ADVANCE WARNING SIGNS MORE THAN 3 DAYS PRIOR TO BEGINNING OF WORK.
- ALL SIGN SPACING DIMENSIONS ARE APPROXIMATE, FIELD ADJUST AS NECESSARY OR AS DIRECTED.
- USE PORTABLE WORK ZONE SIGNS ONLY WITH PORTABLE WORK ZONE SIGN STANDS SPECIFICALLY DESIGNED FOR ONE ANOTHER. PORTABLE WORK ZONE SIGNS MAY BE ROLL UP OR APPROVED COMPOSITE.
- PROVIDE PORTABLE WORK ZONE SIGN STANDS, PORTABLE SIGNS AND SIGN SHEETING WHICH ARE LISTED ON THE NORTH CAROLINA DEPARTMENT OF TRANSPORTATION'S APPROVED PRODUCT LIST OR ACCEPTED AS TRAFFIC QUALIFIED BY THE TRAFFIC CONTROL UNIT.
- \*\* TWO-WAY UNDIVIDED ADVANCE WARNING SIGN CONFIGURATION MAY BE USED ON URBAN MULTI-LANE FACILITIES WHERE CONDITIONS LIMIT THE USE OF DUAL MOUNTED SIGNS AS DETERMINED BY THE ENGINEER.

LEGEND	
	PORTABLE SIGN
	DIRECTION OF TRAFFIC FLOW

DETAIL DRAWING  
FOR TWO-WAY UNDIVIDED  
WORK ZONE WARNING SIGNS

SHEET 1 OF 1

APPROVED: _____ DATE: _____	DETAIL DRAWING FOR TWO-WAY UNDIVIDED ADVANCED WORK ZONE WARNING SIGNS	
SEAL		
SCALE: NONE		REVISIONS
DATE:		7-98 10/01
DWG. BY:		10-98 03/04
DESIGN BY:		01/01 11/04
REVIEWED BY:		CADD FILE

22-NOV-2006 15:29  
 \\DOT\OFFSHOOTING\GROUPS-WZ\TCCC.designgroup\resurfacing\resurfacing2006\div08\8cr201916chatham\8cr2019162wayundivurbfrwysjuly2006.dgn  
 psey/more AT WZTC206421