

**TIP PROJECT: B-4188**

STATE OF NORTH CAROLINA  
 DIVISION OF HIGHWAYS  
 PLAN FOR PROPOSED  
 HIGHWAY EROSION CONTROL  
**MARTIN COUNTY**

**LOCATION: BRIDGE NO. 36 OVER SMITHWICK CREEK ON SR 1523**

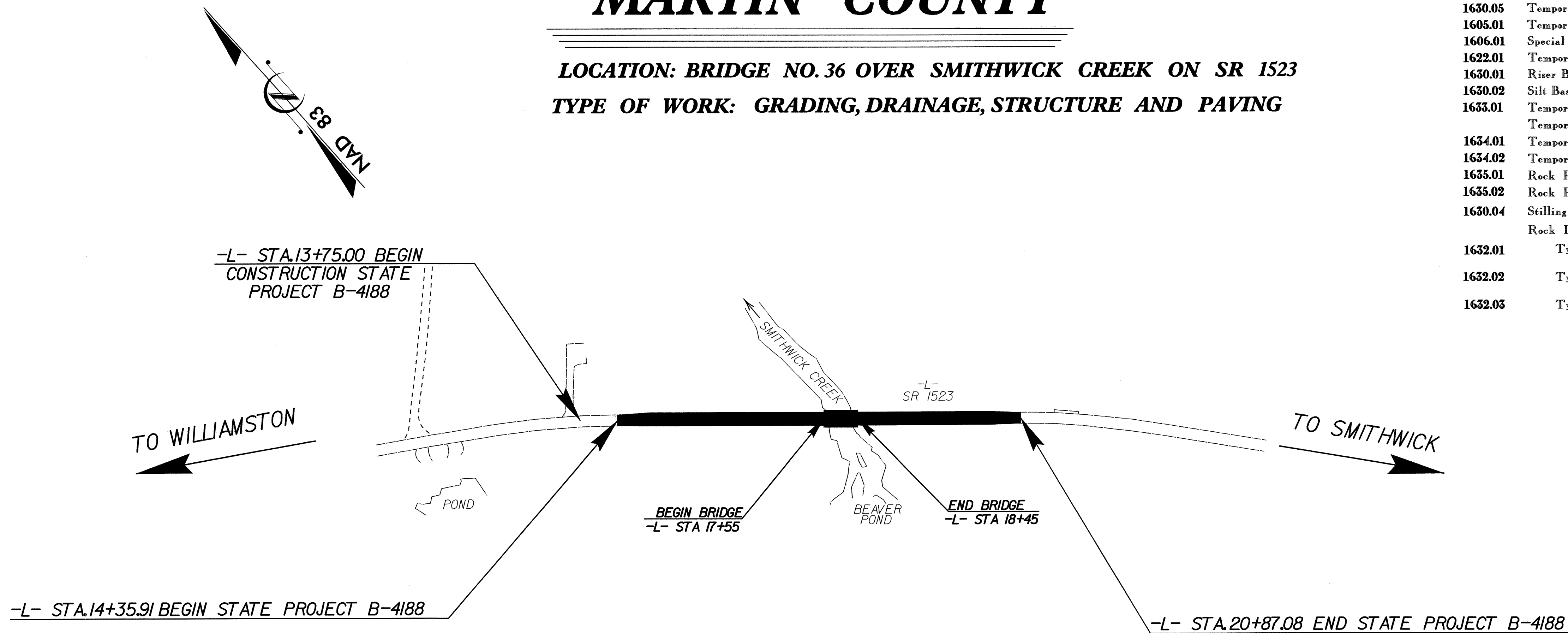
**TYPE OF WORK: GRADING, DRAINAGE, STRUCTURE AND PAVING**

STATE	STATE PROJECT REFERENCE NO.	SHEET NO.	TOTAL SHEETS
N.C.	B-4188	EC-1	
STATE PROJ. NO.	F.A. PROJ. NO.	DESCRIPTION	

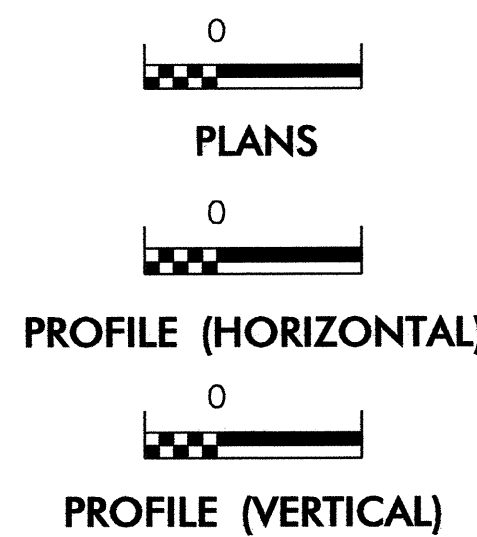
**EROSION AND SEDIMENT CONTROL MEASURES**

Std. #	Description	Symbol
	Streambank Reforestation	
1630.03	Temporary Silt Ditch	
1630.05	Temporary Diversion	
1605.01	Temporary Silt Fence	
1606.01	Special Sediment Control Fence	
1622.01	Temporary Berms and Slope Drains	
1630.01	Riser Basin	
1630.02	Silt Basin Type B	
1635.01	Temporary Rock Silt Check Type-A	
	Temporary Rock Silt Check Type-B	
1634.01	Temporary Rock Sediment Dam Type-A	
1634.02	Temporary Rock Sediment Dam Type-B	
1635.01	Rock Pipe Inlet Sediment Trap Type-A	
1635.02	Rock Pipe Inlet Sediment Trap Type-B	
1630.04	Stilling Basin	
	Rock Inlet Sediment Trap:	
1632.01	Type A	
1632.02	Type B	
1632.03	Type C	

**THIS PROJECT CONTAINS  
 EROSION CONTROL PLANS  
 FOR CLEARING AND  
 GRUBBING PHASE OF  
 CONSTRUCTION.**



**GRAPHIC SCALE**



ROADSIDE ENVIRONMENTAL UNIT  
 DIVISION OF HIGHWAYS  
 STATE OF NORTH CAROLINA

Prepared In the Office of:  
**ROADSIDE ENVIRONMENTAL UNIT**  
 1 South Wilmington St.  
 Raleigh, NC 27611  
**2006 STANDARD SPECIFICATIONS**

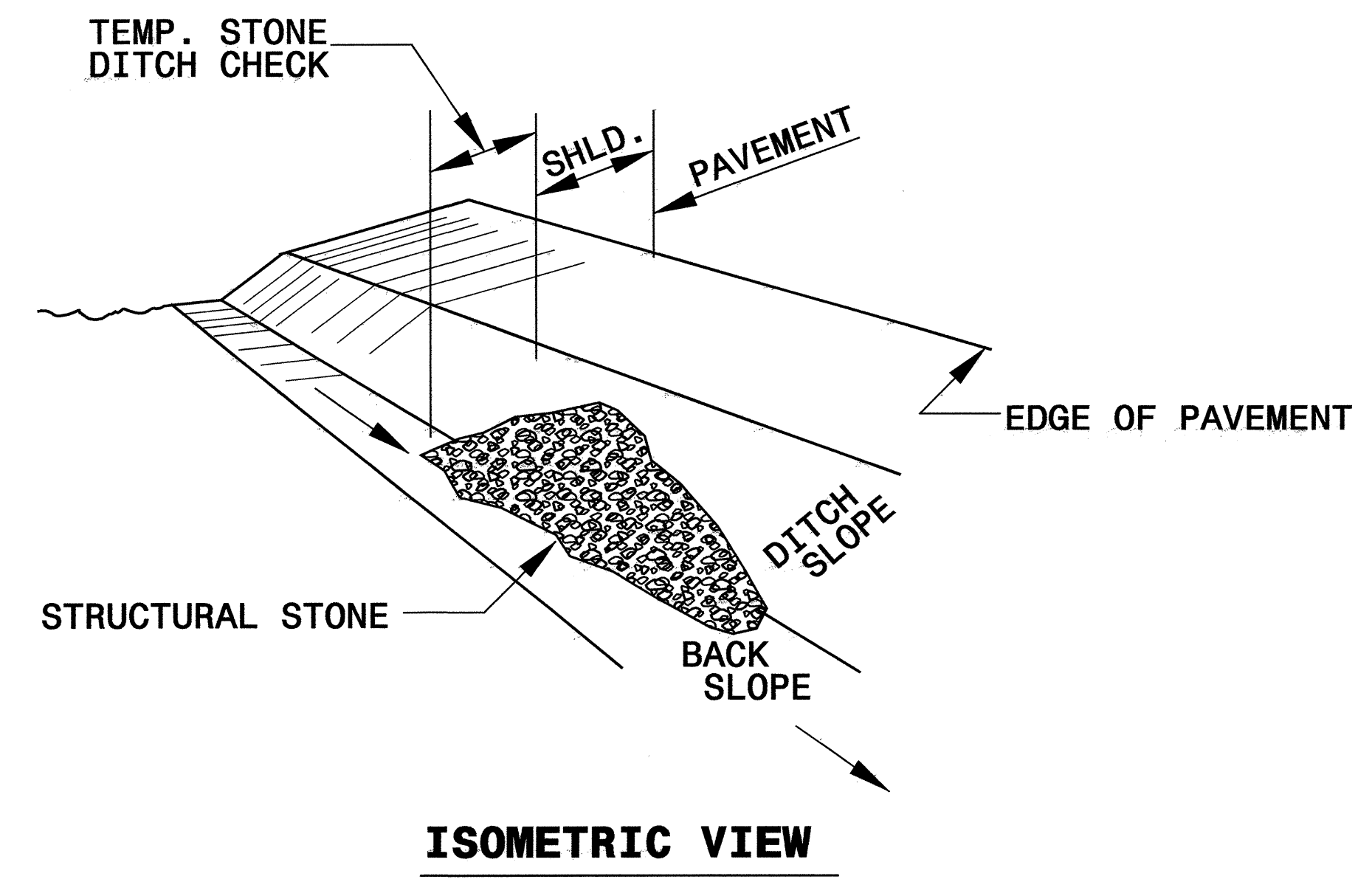
**Roadway Standard Drawings**

The following roadway english standards as appear in "Roadway Standard Drawings"- Roadway Design Unit - N. C. Department of Transportation - Raleigh, N. C., dated July 18, 2006 and the latest revision thereto are applicable to this project and by reference hereby are considered a part of these plans.

- |  |  |
|--|--|
| 1605.01 Temporary Silt Fence             | 1632.03 Rock Inlet Sediment Trap Type C    |
| 1607.01 Gravel Construction Entrance     | 1633.01 Temporary Rock Silt Check Type A   |
| 1622.01 Temporary Berms and Slope Drains | 1634.02 Temporary Rock Sediment Dam Type B |
| 1630.05 Temporary Diversion              |  |

PROJECT REFERENCE NO. <i>B-4188</i>	SHEET NO. <i>EC-2</i>
RW SHEET NO.	
ROADWAY DESIGN ENGINEER	HYDRAULICS ENGINEER

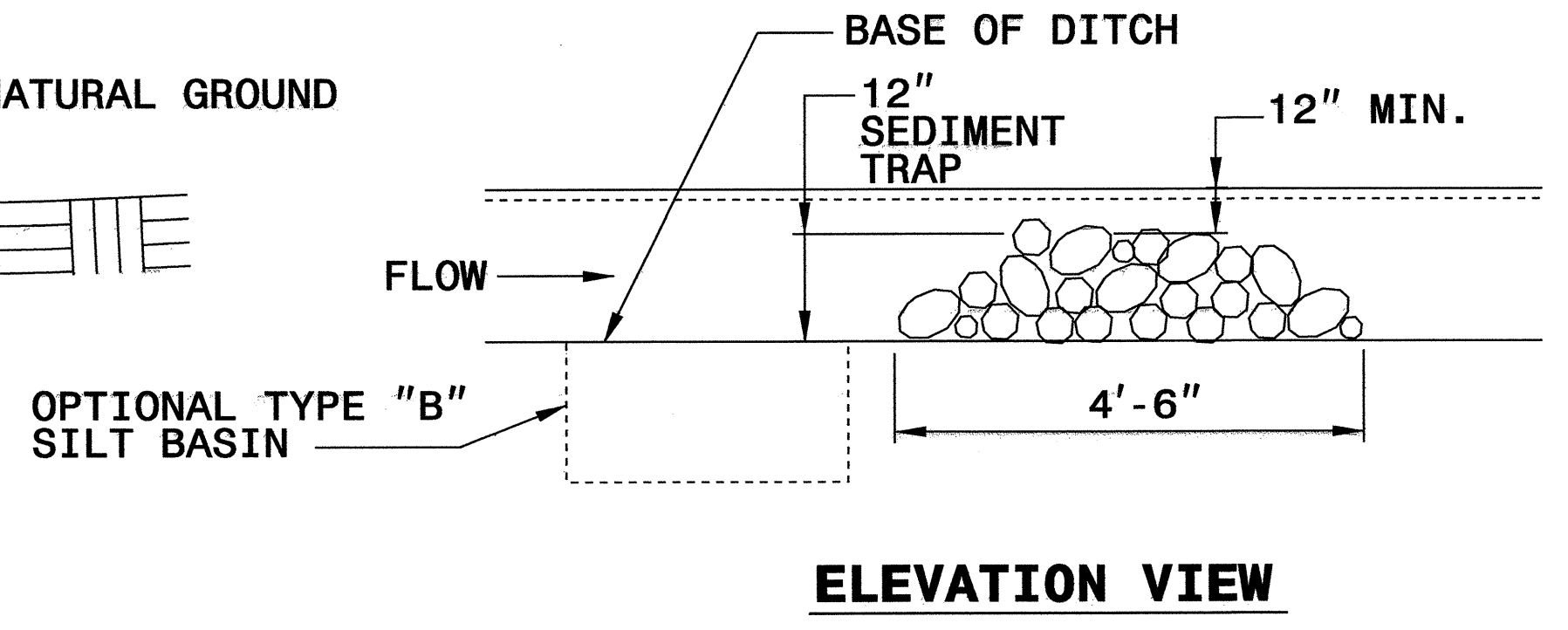
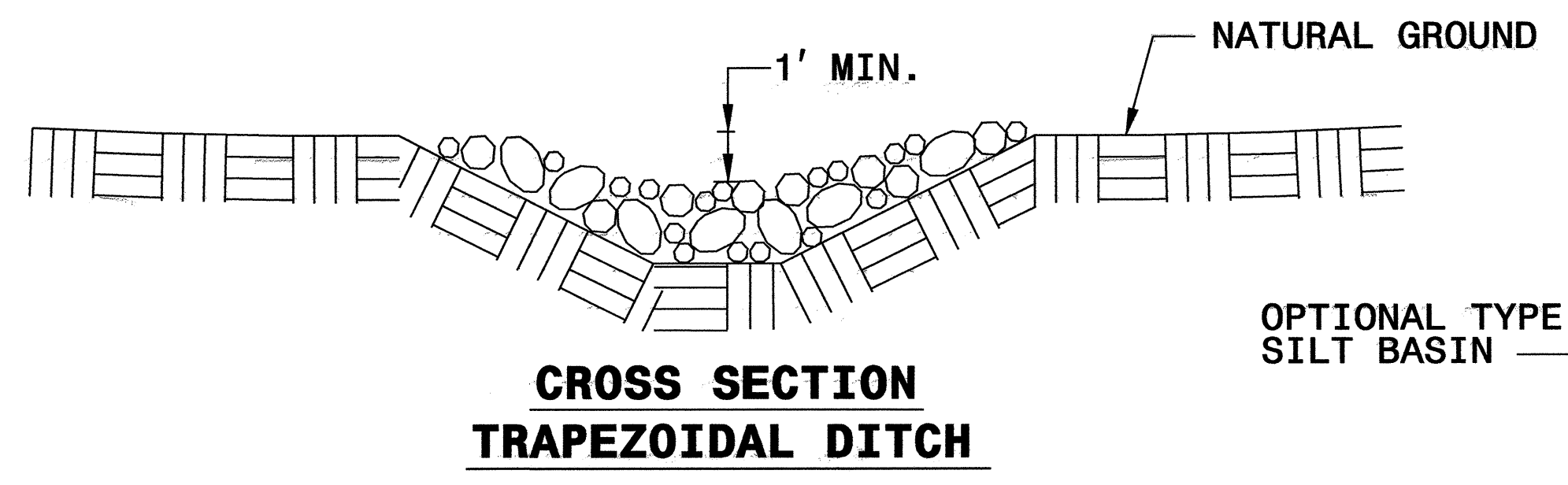
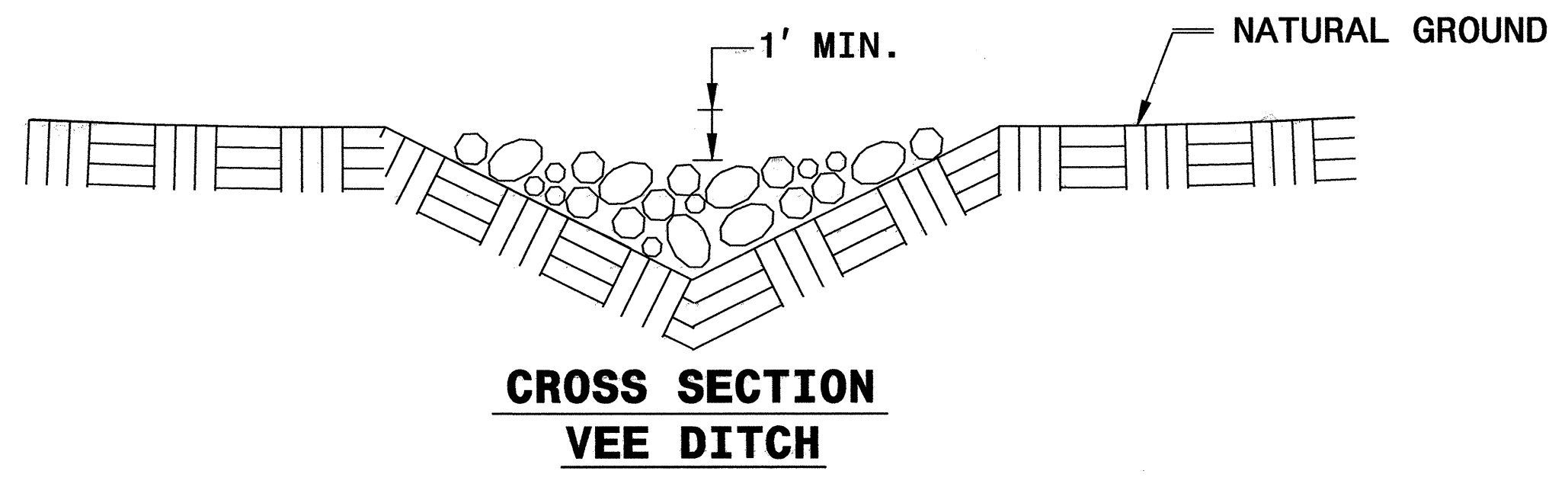
# TEMPORARY ROCK SILT CHECK TYPE 'B' DETAIL



NOTES:

USE CLASS 'B' EROSION CONTROL STONE FOR STRUCTURAL STONE.

THE ENGINEER MAY DIRECT THE OPTION OF CLASS "A" STONE FOR SITES HAVING LESS THAN ONE (1) ACRE DRAINAGE AREA AND A DITCH GRADE LESS THAN 3%.





**CLEARING AND GRUBBING  
EROSION CONTROL FOR  
CONSTRUCTION SHEET 4**

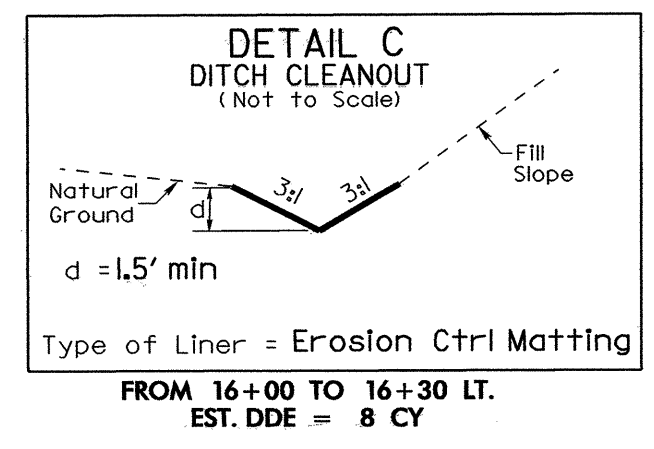
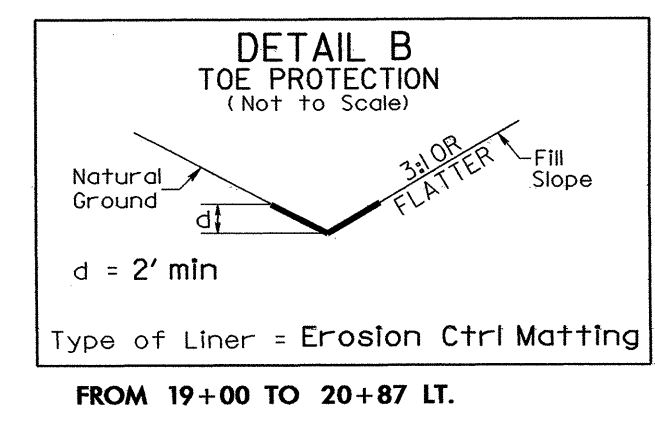
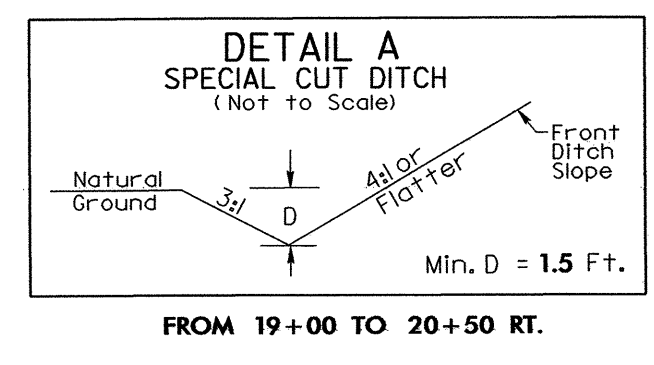
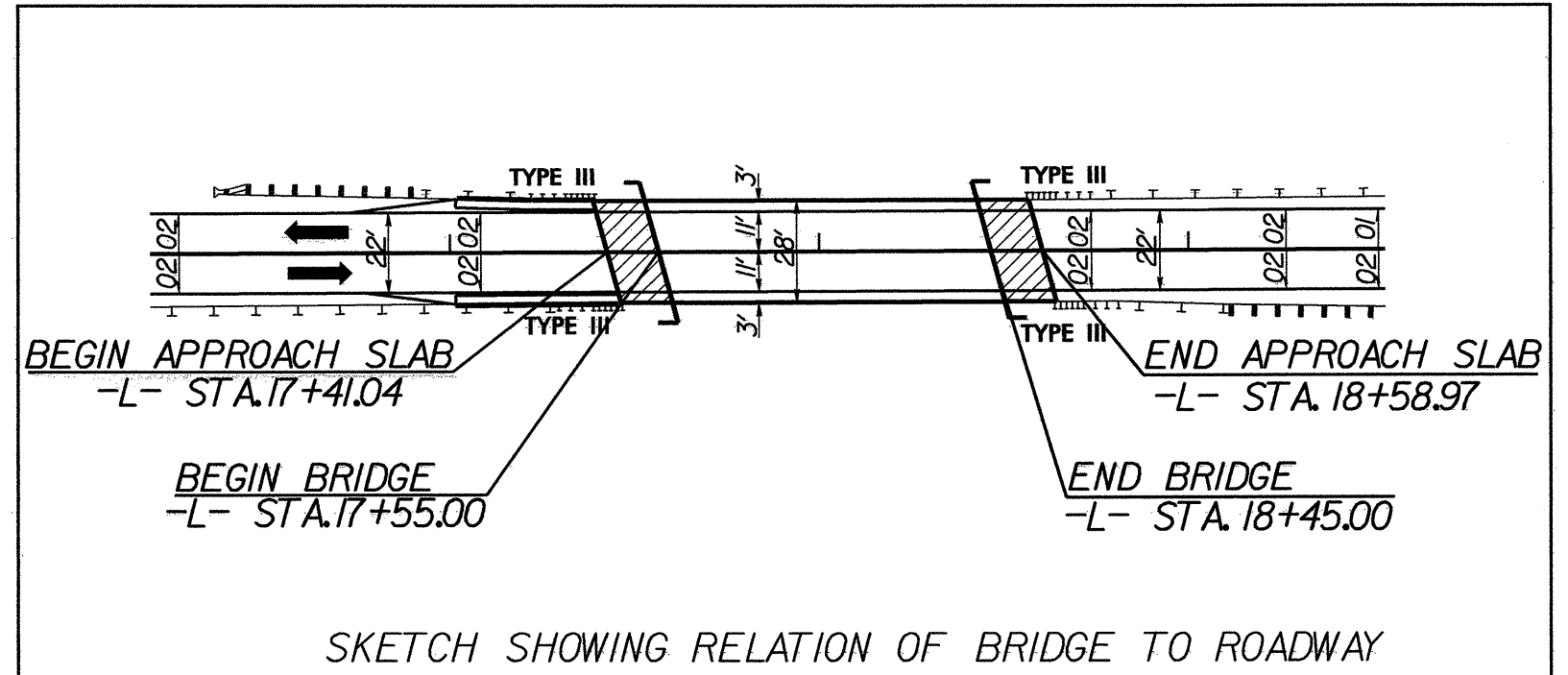
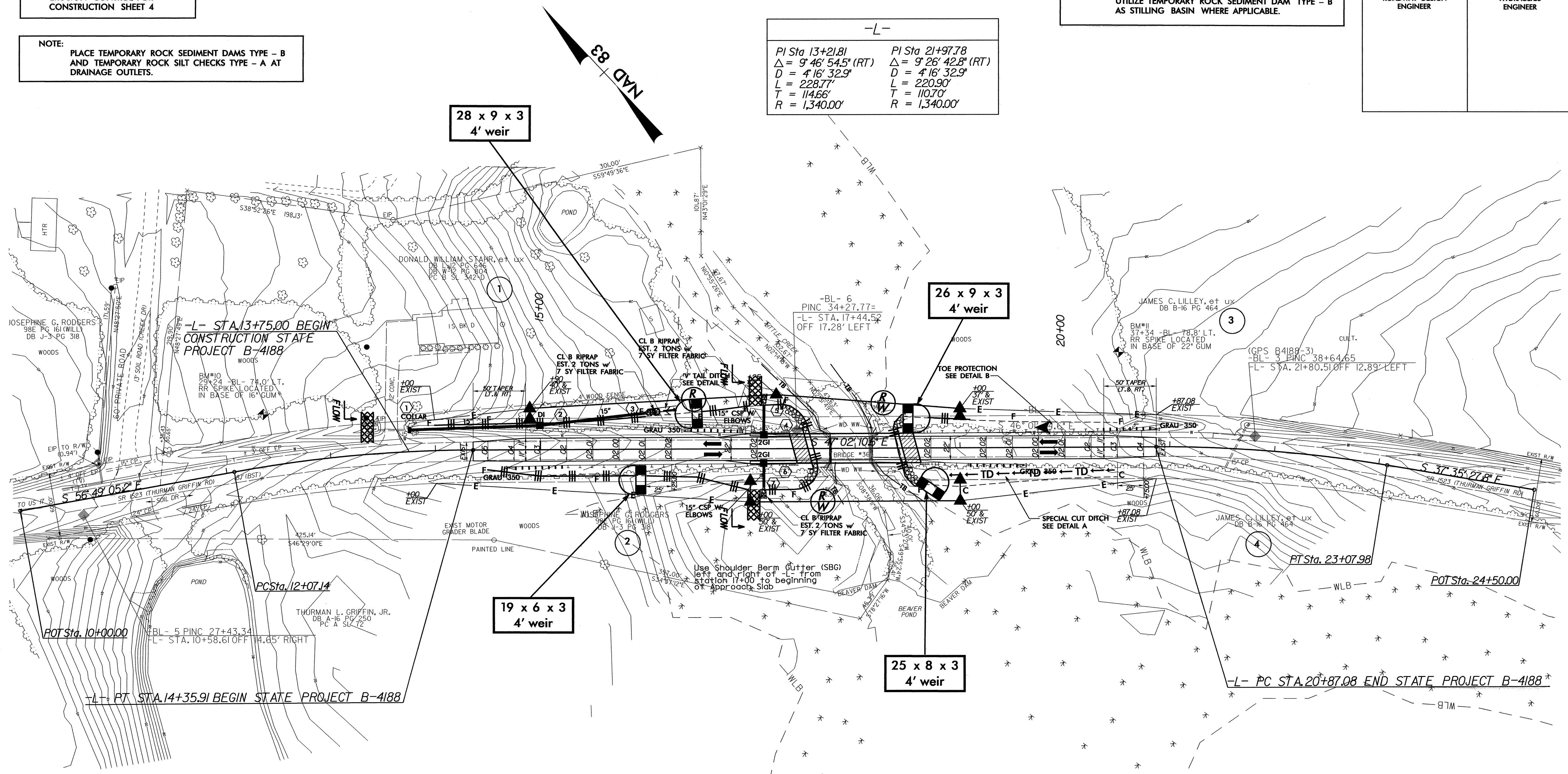
**NOTE:**  
PLACE TEMPORARY ROCK SEDIMENT DAMS TYPE - B  
AND TEMPORARY ROCK SILT CHECKS TYPE - A AT  
DRAINAGE OUTLETS.

**NOTE:**  
UTILIZE TEMPORARY ROCK SEDIMENT DAM TYPE - B  
AS STILLING BASIN WHERE APPLICABLE.

PROJECT REFERENCE NO. <i>B-4188</i>	SHEET NO. EC-4/CONST.4
RW SHEET NO.	
ROADWAY DESIGN ENGINEER	HYDRAULICS ENGINEER

-L-

PI Sta 13+21.81 Δ = 9° 46' 54.5" (RT) D = 4' 16' 32.9" L = 228.77' T = 114.66' R = 1,340.00'	PI Sta 21+97.78 Δ = 9° 26' 42.8" (RT) D = 4' 16' 32.9" L = 220.90' T = 110.70' R = 1,340.00'
---	---



PROJECT REFERENCE NO. <b>B-4188</b>	SHEET NO. <b>EC-5/CONST.4</b>
RW SHEET NO.	
ROADWAY DESIGN ENGINEER	HYDRAULICS ENGINEER

NOTE:  
UTILIZE TEMPORARY ROCK SEDIMENT DAM TYPE - B AS STILLING BASIN WHERE APPLICABLE.

-L-	
PI Sta 13+21.81	PI Sta 21+97.78
$\Delta = 9^{\circ} 46' 54.5" (RT)$	$\Delta = 9^{\circ} 26' 42.8" (RT)$
$D = 4' 16' 32.9"$	$D = 4' 16' 32.9"$
$L = 228.77'$	$L = 220.90'$
$T = 114.66'$	$T = 110.70'$
$R = 1,340.00'$	$R = 1,340.00'$

